

# LANDSCAPE & URBAN DESIGN

71

Jan/Feb 2025

Price £4<sup>95</sup>

landud.co.uk



## Fifteen new gardens join RHS Partner Garden Programme for 2025

The new gardens span the UK, France and Italy including this early 19th Century three walled Abbotsford Garden in Scotland



## Reconstruction of Urban Memory

Renovating the Beijing-Hangzhou Grand Canal



## Award winning Garden Company

Celebrating the prestigious principle design excellence award



A red and white Kress RTK robot mower is shown from a low angle, moving across a lush green lawn. The mower has a white top with the Kress logo and a red base with a scalloped edge. In the background, there are dense green trees and a large, multi-story stone building with many windows, suggesting a golf course or a large estate.

# RTK<sup>n</sup>

Real-time kinematic to the  
power of network

## The future of unmanned mowing is now.

The Kress RTK<sup>n</sup> robot mowers extend unmanned mowing to larger areas. They efficiently operate in parallel lines and autonomously move from one area to another, as if driven by humans. There is no need for boundary wires or on-site aerials.

The Kress RTK<sup>n</sup> robot mowers maintain areas of up to 36,000 m<sup>2</sup> each.

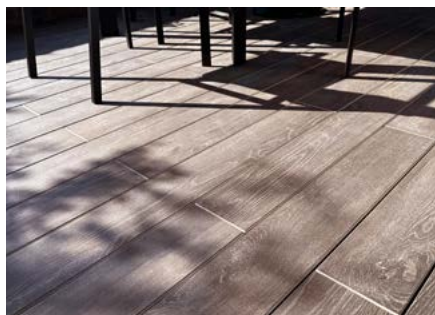
Ask for Kress at your local garden machinery dealership,  
or learn more at [kress.com](http://kress.com)

**Kress**<sup>®</sup> 



# CONTENTS ISSUE 71

## THIS ISSUES MAIN FEATURES



Decking | 23 - 33



Landscaping Services | 54 - 65



Sport & Play | 66 - 78

### Garden Design

4 - Fifteen new gardens join RHS Partner Garden Programme for 2025.

10 - Hartley Botanic's annual greenhouse trend predictions.

16 - Preserving nature's beauty for future generations.

20 - Why landscape design is crucial for a luxury home and here is why

### Decking

24 - Why ceramic decking is increasingly popular in residential projects?

28 - Moso Bamboo Decking from Gripsure UK showcases their ultimate sustainable solution for outdoor spaces.

32 - What to include in your dream garden in 2025.

### Lighting

36 - Light your way with Corten Steel.

### Concrete & Stonework

40 - Save time & money repointing unbound 'flexible' paving with GftK vdw 850+50.

### Green & Blue Infrastructure

42 - Reconstruction of Urban Memory, In 2023, Liangxi District of Wuxi City launched the construction of the waterfront space in the Beitang Street section.

46 - GreenBlue Urban's SuDS Solutions Transform Wood Street.

### Street Furniture

52 - Creating inspiring street scenes.

### Landscaping Services

54 - Pictorial Meadows transforming grasslands for biodiversity and beauty.

56 - Landscape design is Green-tech helps grandmother Janet Willoner. edge closer to her goal of growing 5,000 Trees!

58 - Rooted In quality, cell-grown and 100% peat-free rymer trees and hedging.

60 - Preparing ponds and lakes for autumn: the importance of aeration.

64 - Reesink and Toro combined for the quick winter win.

### Sports & Play

66 - Wicksteed - Enriching communities through play for over a Century.

70 - PlaySmart UK revolutionising landscaping with hybrid grass.

72 - Reimagining the MUGA - The route to better teenage play provision.

### Tools, Plant & Equipment

80 - Get control with smart resource scheduling

Accredited  
Members  
of BALI



### Publishing Director

Martin Holmes  
martin@mhmagazine.co.uk

### Sales Director

Lee Martin  
lee@landud.co.uk

### Digital Manager

Jamie Bullock  
jamie@mhmagazine.co.uk

### Editor-in-Chief

Antony Holter  
editor@mmhmagazine.co.uk

### Editor

Lorna Davidson  
lorna@landud.co.uk

### Business Manager

Josh Holmes  
josh@mhmagazine.co.uk

### Studio Designer

Leila Schmitz  
leila@mhmagazine.co.uk

Marketing Enquiries - 01227 936974

Editorial Enquiries - 01304 806039

Other Enquiries - 01304 806039

### Publishers

MH Media Global Ltd.  
18/20 Newington Road,  
Ramsgate Kent CT12 6EE

Cover images courtesy of: Left: RHS Partner Garden Programme | Top Right: Jin Xiaohui | Bottom Right: The Garden Company

Every effort is made to ensure the accuracy and reliability of material published in Landscape & Urban Design however, the publishers accept no responsibility for the claims or opinions made by advertisers, manufacturers or contributors. No part of this publication may be reproduced or transmitted in any form or by any means, mechanical, electronic (including photocopying) or stored in any information retrieval system without the prior consent of the publisher.





Abbotsford Gardens, Scotland

# FIFTEEN NEW GARDENS JOIN RHS PARTNER GARDEN PROGRAMME FOR 2025

## THE NEW GARDENS SPAN THE UK, FRANCE AND ITALY

Two walled gardens dating back to the 1700s, a collection of Chelsea-inspired celebrity gardens in a shopping centre and a landscape that inspired Jane Austen are among the 15 beautiful and unique gardens which will become Royal Horticultural Society (RHS) Partner Gardens in 2025.

RHS members can now visit over 230 spectacular gardens across the globe, along with the five iconic RHS Gardens in the UK.

RHS Partner Gardens Partner Gardens & Affiliated Societies Manager, Prunella Murray, says, "We are hugely proud of our Partner Gardens which are all brilliantly unique and provide RHS Members with 231 opportunities to absorb themselves in stunning gardens free of charge. The new gardens enhance the variety and quality of gardens in the scheme and include some unusual locations that one might not normally visit."

The RHS membership scheme provides unlimited entry into RHS Gardens throughout the year, and the opportunity to visit Partner Gardens for free at selected times of the year. Partner Gardens are spread across the British Isles and overseas, including Barbados, France, Japan and South Africa.

**The newest RHS Partner Gardens are:**

**Holkham Walled Garden, Norfolk**



Holkham Estate is an enchanting Walled Garden dating back to the late 1700s which contains a spectacular stand of Georgian and Victorian greenhouses and vinerias, a formal ornamental garden, an established vineyard, a working kitchen garden, an exotic garden with a large lawn and a spectacular cutting garden with a beautiful array of blooms.

### **Springfields Festival Gardens, Lincolnshire**

Springfields Outlet Shopping is stylish blend of retail and leisure set in 25 acres with award-winning gardens. The Gardens, which were established in 1966, are home to a Stephen Newby stainless steel sculpture collection including a water pyramid fountain, pillow planters and a specially commissioned 15' 'Kaleidoscope Wheel' situated in the canal.

### **Moors Meadow, Hertfordshire**

Moors Meadow is an intriguing and eclectic garden set in a seven-acre organic hillside site with views over the beautiful Kyre Valley. It is rich with unusual and exotic plants displayed in herbaceous borders, a grass garden, a rhododendron glade, a fernery, a cottage-style garden, herb garden and a highly productive kitchen garden. Assorted paths wind through the garden to add a sense of surprise and secrecy.

### **Ashridge House Gardens, Hertfordshire**

Designed by Humphry Repton in



Eyrignac Jardins, France

1813, Ashridge House, once a royal residence for Henry VIII, boasts 190 acres of Grade II gardens with breathtaking views. The naturalised spring bulbs among impressive trees provide a place to wander and unwind in spring, and there is a cosy, dog-friendly café.

### **Himalayan Garden and Sculpture Park, North Yorkshire**

An award-winning garden set in 45 acres in the heart of the North Yorkshire countryside, the Himalayan Garden offers the north's largest collection of rhododendrons, as well as azaleas, magnolias, 90 striking contemporary sculptures, a woodland playground and garden tearoom serving freshly prepared food.

### **Chawton House, Hampshire**

An enchanting and tranquil

garden, and the setting for the 'Great House' referred to in Jane Austen's letters, which comprises a wilderness, walled garden, terraces and sweeping views. Carpets of snowdrops and daffodils, spring blossom, summer florals, autumn colours and festive lights give this garden, which also celebrates and promotes women's writing, year-round interest, which is particularly poignant in 2025 - the 250th anniversary of Jane Austen's birth.

### **Staunton Country Park, Hampshire**

Created by Sir George Staunton in the early 1800s, this 222-acre listed regency landscape boasts follies, an ornamental lake, Chinese planting, Champion trees and the National Plant Collection of Lardizabalaceae, all surrounded by beautiful woodland and meadows.

### **West Green House Gardens, Hampshire**

A sylvan landscape encircles four walled gardens with a collection of follies, topiaries, a nymphaeum and a lake. In its ten acres, it highlights naturalised fritillaries, 10,000 tulips every year, a potager and massed dahlias.

### **Doddington Place, Kent**

With historic importance and recognition as an Area of Outstanding Natural Beauty (AONB), Doddington Place comprises a woodland garden, sunken garden, large rock garden, clipped cloud yew hedges, specimen trees and herbaceous borders surrounded by wooded countryside.



West Green House Gardens, Hampshire





Plas Cadnant Hidden Gardens, Wales

**Luton Hoo Walled Garden, Bedfordshire**

A unique Capability Brown-designed Walled Garden, surrounded by its original 18th-century octagonal wall and supported by a selection of rare service buildings. The garden is the focus of a dynamic volunteer project and continues to be revived, repaired and re-imagined for the enjoyment of everyone.

**Canonteign Falls, Devon**

This historic, privately owned estate in the heart of Devon offers 90 acres of parkland with beautiful waterfalls nestled in ancient woodland. Rocky cliffs give way to idyllic meadows and tranquil lakes, each offering a unique habitat for flora and fauna. The Victorian Fern Garden was awarded Plant Heritage National Plant Collection status in 2022, and the paved labyrinth adds further interest to any visit.

**Plas Cadnant Hidden Gardens, Wales**

Alongside the Menai Strait, on the Isle of Anglesey, lies Plas Cadnant Hidden Garden, a spot which has been meticulously developed since 1996 and is fast becoming a plant paradise featuring many unusual plants and a huge variety of hydrangeas.

**Abbotsford Gardens, Scotland**

In the early 19th century Sir Walter Scott created the three walled gardens, set within a naturalistic wooded landscape beside the River Tweed. For the past 200 years, vegetables, herbs and fruit have been grown here, and are now complemented by herbaceous borders, spring-flowering shrubs and a profusion of beautiful roses.

Outside the UK, RHS Members have two new gardens to visit on trips to France or Italy.

**Eyrygnac Jardins, France**

Situated high in the Dordogne and close to Sarlat, these magnificent

French-style gardens feature three hundred sculpted plants superbly hand-clipped by gardeners in the tradition of times gone by. These are situated alongside fountains, reflective waters and flower beds.

**Villa della Pergola, Italy**

An Anglo-Mediterranean park on the Riviera, Villa della Pergola was created in 1875 and owned by British families (McMurdo, Hamilton-Dalrymple and Hanbury). It was saved from building speculators in 2006 and restored by Paolo Pejrone, and now houses thousands of species, rare plants and renowned Wisteria and Agapanthus collections. It was awarded The Most Beautiful Park in Italy in 2022.

Details of all RHS Partner Gardens can be found at [www.rhs.org.uk/partner-gardens](http://www.rhs.org.uk/partner-gardens). Garden lovers can become RHS members at [www.rhs.org.uk/join](http://www.rhs.org.uk/join)



**STIHL**



## GET IT DONE WITH BATTERY.



Experience unprecedented performance with STIHL's extensive range of professional grade battery-powered tools for commercial users.

IPX4 certification lets you continue working with confidence in the rain. Long-lasting smart batteries deliver consistent power throughout the whole battery charge. And fast chargers deliver quick recharge times so you and your tools are always ready for the job.



BGA 300 LEAF BLOWER

FIND OUT MORE AT [STIHL.CO.UK](https://www.stihl.co.uk)

**APIII**  
SYSTEM





# J.A. JONES & SONS GROWING TO RAISE STANDARDS

Established in 1900, J. A. Jones & Sons has a long heritage of growing in Southport. From humble beginnings, the company has matured into one of the UK's leading wholesale nurseries with an enviable international reputation.

As a certified 'Plant Healthy' nursery, our 105 acres of field grown trees and 8,000 peat-free air pot and container grown trees can be transported throughout the UK. This includes all our OPM-free Oak trees, ranging in size from 8-10cm to 16-18cm girth.

In addition to our tree stock, we also grow over 25 acres of shrubs and perennials to ensure we're able to offer a complete 'one stop' shop.

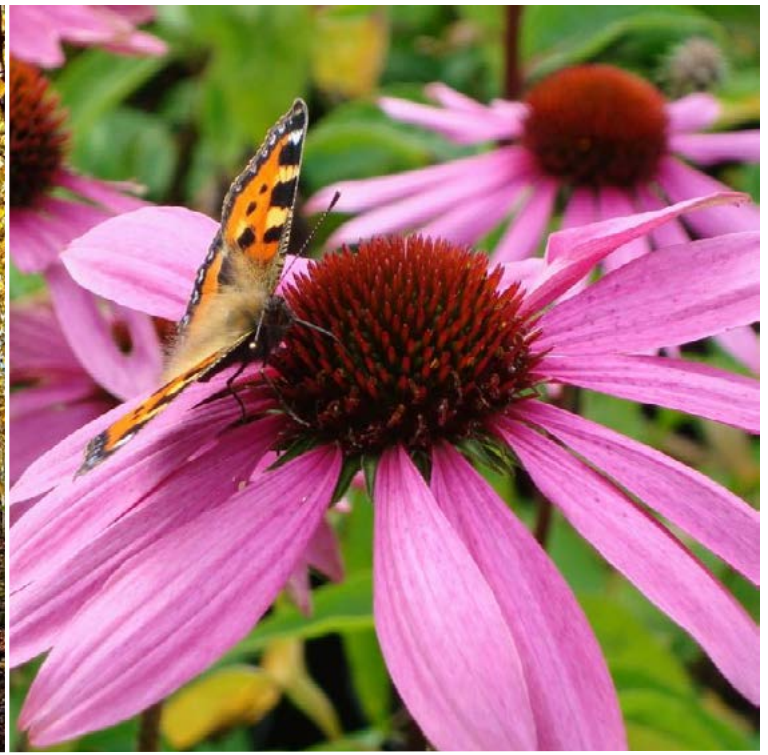
With the increasing difficulty of international trade and rigorous plant health inspections, why not alleviate any concerns by buying British, safe in the knowledge that J. A. Jones & Sons is 'Growing to raise Standards'

---

**For enquiries, please contact**  
[sales@jajones.co.uk](mailto:sales@jajones.co.uk) or 01704 228235  
[www.jajones.co.uk](http://www.jajones.co.uk)







A leading wholesale nursery based in Southport since 1900 supplying trees and shrubs up to semi-mature in size. With a Cash & Carry to view, we look forward to welcoming you to the North West's largest wholesale nursery.

Tel: 01704 228235 Email: [sales@jajones.co.uk](mailto:sales@jajones.co.uk) Web: [www.jajones.co.uk](http://www.jajones.co.uk)



# *J. A. Jones & Sons Ltd*

*'Growing to raise Standards'*



**Perennial  
Partner**







A Hartley Botanic Victorian Manor at the 2024 RHS Chelsea Flower Show in London, showcasing how partitions can organise a Greenhouse

# HARTLEY BOTANIC'S ANNUAL GREENHOUSE TREND PREDICTIONS THE GREENHOUSE IN 2025

## Greenhouse Partitions

The use of partitions in Greenhouses is becoming increasingly popular as gardeners look for more precise control over their growing environment and formally divide structures for additional lifestyle uses.

By dividing Greenhouses into distinct zones, partitions allow for tailored microclimates that cater to the specific needs of different plants optimising conditions such as temperature, humidity, and light exposure. This not only improves plant health, it also enhances resource efficiency, allowing for more specific heating, ventilation,

and watering. Additionally, as a physical barrier, partitions can reduce the spread of pests and diseases and the need for environmentally-friendly controls.

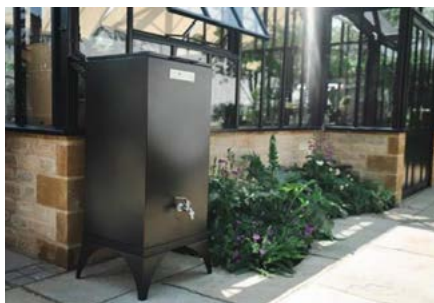
At the 2024 RHS Chelsea Flower Show, Hartley Botanic showcased its stunning Victorian Manor Glasshouse, with a partitioned-off work/ lifestyle room. Increasingly, Hartley Botanic customers are now using partitions to create separate spaces for dining, garden working or tranquil morning and evening relaxation. Greenhouses, even though single-glazed, offer a sheltered environment that allow customers to enjoy their

gardens regardless of the weather, and the use of partitions adds an additional element of flexibility and personalisation. Greenhouse owners are using them to add a garden "room" separate to their horticultural needs, enjoying the space in a multifaceted way while surrounded by their plants.

## Environmentally Conscious Water Conservation and Pest Control

With a growing concern for sustainability, rainwater harvesting and biological pest control will become increasingly popular amongst Greenhouse owners. These methods not only help address





A Hartley Botanic aluminium Water Butt

environmental concerns, they can often mean more cost-effective solutions.

**Rainwater harvesting**

Water Butts are the simplest way for Greenhouse owners to collect rainwater and, this year, in response to customer demand, Hartley Botanic launched its own range. Rainwater may swing from being sporadic to torrential as a result of climate change, it is also better for plants, as it often has a lower pH. The minerals that are sometimes found in mains water, especially in hard water areas can raise the pH of your root zone, which can affect nutrient availability. Rainwater is vital for the healthy growth

of Ericaceous plants such as azaleas, camellias and rhododendrons

Hartley Botanic's new Water Butts provide a useful rainwater storage solution (up to 167 litres) at the same time as offering customers a stylish design which can be powder coated to match their Greenhouse.

**Natural pest control**

Natural, often called 'Biological,' pest control tackles invasive Greenhouse insect species using predators found in nature, rather than any harmful chemicals. The predatory wasp *Encarsia formosa* can be used to combat whitefly, predatory mites *Phytoseiulus persimilis* and *Amblyseius*, a predatory midge *Feltiella acarsuga* and a rove beetle *Atheta coriaria* can help get rid of red spider mites. You can also control mealybug, with the ladybird *Cryptolaemus montrouzieri*. Many biological pest controls can be bought online. Greenhouse owners should check their plants regularly for signs of an infestation, as it is easier to control smaller occurrences than an epidemic. To help estimate how extensive a whitefly problem you have, simply install a few yellow

sticky traps inside your Greenhouse and observe how many you catch.

**Successional Growing (year-long harvesting)**

Greenhouses provide a controlled environment that can extend the growing season and protect plants from undesirable weather. For those who grow their own food, this means edible plants year-round, it also means enjoying the benefits of bulbs flowering early.

'Successional sowing' allows for growing and harvesting 'cut and come again' edibles at all stages of growth. This can range from microgreen seedlings to juvenile and mature plants and will result in an interesting array of eating textures - from soft to crisp.

For flowering bulbs in pots, keep them outdoors or in a cold frame at 1.5 to 10C for ten weeks in autumn and early winter. Bring them into the Greenhouse for an early burst of spring. If you have the facilities, put them under growing lamps once they start sprouting, or on a heat mat, enough to encourage growth but not to make stems long and leggy through lack of light.

Keep this in mind when buying bulbs in autumn for planting from September to November for next spring. Traditionally, people 'force' hyacinths and narcissus but there can be so much more variety than that and it is time for a revisiting of this technique. Other bulbs to consider include; crocus, daffodils of all kinds including miniatures, 'Lily of the Valley,' hyacinths, *Iris reticulata*, *Scilla* and Lilies.



Spreadlighting Technique - Charleston Cobra A Hartley Botanic Tradition 8 Glass to Ground Greenhouse, Cheltenham, UK Spreadlight





### 2025's In Demand Greenhouse Accessories

From their extensive range, the Greenhouse accessories set to be most popular in 2025 are blinds, staging and shelving, with Hartley Botanic's Victorian roller blinds anticipated to be the most in demand

Blinds help regulate the temperature and light levels inside a Greenhouse and prevent plants being burnt by intense sunlight or affected by harmful UV rays. They can also act as a form of insulation in colder months. A growing necessity for blinds in Greenhouses, may reflect our changing climate, a recent Met Office report confirmed the country is getting wetter but also warmer and sunnier. There are many accessories that can help you make the best use of your Greenhouse and using a mix of shelving and staging is highly effective. As Greenhouses increasingly evolve into multi-use growing and lifestyle spaces,

attractive ways to organise them are becoming more popular boosting the interest in staging and shelving. Hartley Botanic offers aluminium shelving and staging options (including ornate designs) that can be powder-coated in a colour to match or contrast their Greenhouses, providing elegant coherence. Hartley Botanic offers high and low level staging, with high level allowing for the display of low-hanging plants.

**All Hartley Botanic's Glasshouses and Greenhouses are handmade, bespoke, and made to order. Customers interested in purchasing a Hartley Botanic Greenhouse should visit [hartley-botanic.co.uk](http://hartley-botanic.co.uk) or call 01457 819 155 for more information.**







### Why Hartley?

In many respects what we say about our Glasshouses and Greenhouses is immaterial. It's what you say that matters. It's your inspiration that guides us. The conversations, the compliments, our collaboration that together create the world's greatest Glasshouses and Greenhouses - Hartley Botanic:

### Structurally Superior

Every Hartley Botanic Glasshouse and Greenhouse is handmade in England - each a labour of love.

A time-honoured celebration of expert craftsmanship, the very finest materials and matchless attention to detail, that together create the ultimate in durability, safety and beauty.

Structurally superior work that will leave you as confident in your new Hartley as we are in giving every one of them a 30-year Lifetime Guarantee.

### Astonishingly Beautiful

When only the most refined, sublime, most heart-stoppingly

beautiful design will do - we've got just the Glasshouse or Greenhouse for you.

Some gardeners dream of our classic Victorian styles, others our Heritage, or maybe our Modern collection. Perhaps you dream of your own bespoke design.

Distinctive, unique and unfailingly gorgeous, whatever you dream of most, your dream Glasshouse or Greenhouse is here.

### Knowledge Beyond Compare

There's so much more to a Hartley than will ever meet the eye.

You won't see the years of hard-won knowledge passed from generation to generation. The customer conversations. The incomparable care. The consideration. The decades of continual refinements, finessing and fine-tuning.

When you buy a Hartley Glasshouse or Greenhouse you won't see any of that. But you will feel it all.

### A Reputation Second to None

85 years designing the finest

Glasshouses and Greenhouses that money can buy, a unique and prestigious Royal Horticultural Society endorsement, with thousands of beautiful installations for thousands of delighted customers the world over. Our plaudits don't make our reputation - they reflect it.

A reputation built on a devotion to the very highest standards, vast experience, peerless craftsmanship and customer service that's literally second to none.



[www.hartley-botanic.co.uk](http://www.hartley-botanic.co.uk)



# PROTECTING AND ENHANCING ARCHITECTURAL LANDSCAPE FEATURES WITH POWDERTECH FINISHES



Powdertech Evolution - 'Sahara'



Powdertech Evolution - 'Diamond mine'

With sustainability and recyclability high on the agenda, metal is becoming a popular choice for decorative outdoor features in residential and commercial landscapes. Combining metal with the latest in powder coated finishes offers an exciting range of colours and textures to designers and landscape architects.

## Lightweighting in landscape architecture

Using metal in the design of landscaping features has many advantages. Abundant and recyclable aluminium is a ductile metal that can easily be shaped into complex forms without risk of breaking. It is lightweight, compared to stone, terracotta and wood, and offers advantages for energy saving in handling and transport. Items such as planters, screening, sheds, water features and outdoor furniture, traditionally made

in heavier materials, can all be designed in metal and coated with Powdertech finishes to faithfully represent the natural materials. Powder coatings themselves have low environmental impact. Unlike wet paint they contain no volatile organic compounds, halogens or heavy metals. They are easy to maintain and clean - all that is needed is a wash down with water every 6-12 months, depending on the location.



Powdertech Evolution - Copper mine'

## The appeal of weathered metal

The appearance of weathered metal works particularly well in outdoor urban environments, presenting an attractive and resilient appearance. Powdertech has been at the forefront of this trend with our 'Evolution' range, reflecting the beautiful patination effects which occur naturally on metals if left exposed - except in this case the metal is not exposed, but protected by the powder coating. Powdertech 'Rust' finishes are frequently chosen by clients as a preferred alternative to Corten steel since they offer the valuable benefits of high performance corrosion resistance, reaction to fire rating A2-s1,d0 and excellent colour stability without any water run-off staining onto groundworks or water features. The images accompanying this article are all Powdertech 'Evolution' finishes.

For more information on Powdertech finishes please visit [www.powdertechcorby.co.uk](http://www.powdertechcorby.co.uk)  
Richard.b@powdertechcorby.co.uk  
+44 (0) 1536 400890



**Powdertech Evolution Finishes**

*Protect and enhance your metal for  
landscape architecture*



**Order FREE sample swatches**  
[www.powdertechcorby.co.uk](http://www.powdertechcorby.co.uk)

**Rust effect finishes with no run-off after rain**

**Textured effects**

**High performance corrosion protection**

**Excellent outdoor durability**

**Minimal maintenance**





# TREE RELOCATION: PRESERVING NATURE'S BEAUTY FOR FUTURE GENERATIONS



Since 1963, Civic Trees have been at the forefront of tree relocation throughout the UK, from importing the very first Vermeer tree spade into Europe, to designing and constructing the Newman Frame which is now used worldwide.

Civic Trees are always looking to pioneer new techniques that aid the relocation of trees.

Tree relocation is a concept that involves uprooting trees from one location and transplanting them to another. With current events surrounding environmental issues, relocating trees is even more important now than ever before. By relocating trees instead of cutting them down, we can preserve nature's beauty while also promoting sustainability.

We are proud of our reputation for efficient, cost effective and reliable tree relocation throughout the UK. You can be confident that through our exemplary commitment to staff



training and development, our work meets the highest technical and safety standards.

We believe that a tree is only as good as the way it is handled, planted and maintained. Ground preparation and aftercare are crucial to the successful establishment of the tree.

Before we start the tree move process we arrange a site visit with our client and assess the tree's health, size, and root system. We also create a site specific risk assessment to ensure the whole operation is carried out safely.

Our team of experts use specialised equipment to excavate the tree with minimal damage to its root structure. The tree is then carefully transported to its new location,

where it is replanted and nurtured to ensure its successful adaptation.

Our experienced team will know and understand the benefits and methods of loading and unloading a tree using the correct lifting techniques in order not to stress the tree or root ball. This is imperative for the longevity of the tree's life.

In conclusion, tree relocation is an environmentally friendly method that allows us to preserve nature's beauty while supporting urban growth. By carefully uprooting and relocating trees, we can maintain the valuable benefits they provide to our communities.

Civic Trees prides itself in paying great attention to the health and well being of our clients most prized asset "THE TREE".





# Supply. Plant. Relocate.



Visit: [www.civictrees.co.uk](http://www.civictrees.co.uk)  
Email: [info@civictrees.co.uk](mailto:info@civictrees.co.uk)  
Tel: 0208 950 4491







The Garden Company has a strong track record of winning BALI Awards over the last 30-plus years. To find out more, you can visit [www.thegardenco.co.uk](http://www.thegardenco.co.uk) follow on Instagram @thegarden\_company or call 01442 832666.

# THE GARDEN COMPANY LTD CELEBRATES PRINCIPAL AWARD FOR DESIGN EXCELLENCE

Members of The Garden Company team, led by James Scott (FSGD MBALI), took part in a wonderful day of celebrations at the JW Marriott Grosvenor House hotel on Park Lane in London on Friday 6 December. James and his team were delighted to receive a prestigious Principal Award for Design Excellence from the British Association of Landscape Industries (BALI). The award recognizes the exceptional quality of a residential design-and-build project in Hertfordshire. A modern, new-build property's rear garden was re-imagined into a stylish outdoor space, balancing family-friendly functionality with elegance

and sophistication for entertaining guests.

James Scott commented, "A huge thank you to everyone who has supported us with this project. The recognition means the world to us! It is a wonderful acknowledgment of our commitment to creating bespoke spaces where people truly enjoy spending their time. Our goal was to create a harmonious flow between the house, garden studio and garden, reflecting the clients' desire for a cohesive, stylish environment. We extend special thanks to our fantastic suppliers – London Stone, Stark and Greensmith, Island Stone

and Nederhoff Plants – and also our contractors Landesigns Ltd. Thanks also to the judging panel of course!

The BALI judging panel described the garden as 'an exemplar scheme in design excellence', summarising it as 'an excellent scheme that demonstrates the designer's skill in creating a tranquil garden that transitions from a quiet space for relaxation to one that can accommodate large groups for entertaining seamlessly. The garden was a pleasure to be in regardless of where you were and sensitively maximises the differing experiences for the client'.



## TRANSFORM THE OUTDOORS IN AN INSTANT WITH READYHEDGE

Give your garden project an instant uplift with ready to plant hedges. Suitable for all garden types, both commercial and domestic.

### At Readyhedge you can choose from:

- Metre long lengths
- Various heights - from 30cm tall to 200cm tall

- Available in Readyhedge bags or Readyhedge troughs

Our hedging expertise spans 20 years+, producing over 50,000 metres of instant hedging per year in over 35 varieties. This includes individual plants, low and high panels and even screens.

### Wide variety of hedges

Discover the large selection of evergreen, deciduous and mixed native hedging available. There are quick growing hedges, semi evergreen, formal hedges, and even low maintenance hedges to choose from!

### Expertly Grown

Readyhedge ready to plant hedges are grown to be fully mature, under the watchful eye of our hedging experts. This ensures every touch of hedging is identical and already knitted together to provide stunning hedging, instantly.

Our aim is to fulfil orders in 48 hours, we offer secure and punctual delivery to any location within the country.

For more information contact Readyhedge on 01386 750585 or visit [www.readyhedge.co.uk](http://www.readyhedge.co.uk)

### Follow us on Social Media:

Facebook @Readyhedge  
Twitter @Readyhedge  
Instagram @readyhedge



THE ORIGINAL  
HEDGE IN A BAG  
FROM THE HOME OF  
INSTANT HEDGING



# READYHEDGE

Readyhedge hedging plants, like the mixed native hedging shown here, are container-grown in the UK and fully acclimatised to UK conditions. With over 20 years' experience, Readyhedge delivers hedging to rely on, wherever you are.

01386 750 585

[info@readyhedge.com](mailto:info@readyhedge.com)

[readyhedge.com](http://readyhedge.com)



# LANDSCAPE DESIGN IS CRUCIAL FOR A LUXURY HOME AND HERE IS WHY

BY JETHRO HUIE, PRINCIPAL DESIGNER AND FOUNDER OF HUIE DESIGNS



When you picture a luxury home, you probably think of sleek interiors, state-of-the-art tech, and exquisite details. But one of the most defining aspects of true luxury isn't inside at all, it's the landscape design. A well-crafted outdoor space doesn't just complement the home; it turns it into a tranquil retreat where elegance, nature, and personal taste come together seamlessly.

It is true that the exterior is the first impression of any home, but I think it's the landscape which truly sets the tone. Imagine lush gardens, sculpted hedges, serene water features, and winding pathways; these elements instantly communicate sophistication and care. The landscape becomes an invitation, a promise of the beauty and luxury to be found inside.

But a great landscape isn't just about looks, it also portrays how

you live in your home. Well-designed outdoor spaces like patios, fire pits, garden lounges, and poolside retreats become natural extensions of your living area, offering places to relax, entertain, or simply enjoy being outdoors. We love blending the outdoors with the indoors too, incorporating greenery and natural textures into interior spaces to create a seamless flow that feels connected to nature. This approach enhances not only the aesthetic but also the experience of living in the home.

Thoughtful landscape design also adds both financial and emotional value. It boosts property value, a key factor in real estate, but beyond that, it provides those priceless moments. A private nook for reflection, a lively space for gatherings, or just a daily reminder of the natural beauty around us. After all, reconnecting to the nature around us, is what brings us clarity and peace.

For us, landscape design is more than just planting trees and flowers - it's a form of art, a way to express individuality. Exotic plants, custom lighting, sculptural features, and innovative designs can transform a property into a true reflection of the owner's personality and vision. Sustainability is also a key part of this, with an emphasis on native plants, water conservation, and eco-friendly choices.

Luxury is not just about the home itself; it's about the experience it creates. Landscape design bridges the gap between the house and its surroundings, enhancing every moment you spend there. Whether it's enjoying an inviting outdoor space or bringing nature into your home, landscape design is what transforms a house into an elegant, functional, and tranquil masterpiece.

---

[www.huiedesigns.com](http://www.huiedesigns.com)



## FOUR OAKS CASH & CARRY



Ensure that your customers garden stays bustling and brimming with blooms during the spring and summer months with our selection of flowering plants. From firm British favourites to more exotic species, our summer flowering plants category casts a wide net, providing the best varieties with the greatest growing characteristics.

Four Oaks Cash & Carry Trade Plant Nursery has been a family-owned business for over 50 years, serving the country with high-quality plants and garden supplies from all over the world. Our passion for gardening has been passed down through generations, and we are proud to continue providing exceptional service to our

customers. Four Oaks continue to provide fresh and interesting seasonal, value added range of pots and baskets made onsite on throughout the year.

Now offering over 1500 lines of trees and shrubs, which will be on display from starter plants to specimen sizes. We have a special range of plants from Italy and Spain, including masterpiece bonsai trees and sculpture plants for that finishing touch on a garden project. We have a wide range of sundries also available, including garden furniture, compost, pots and planters of all sizes, gardening tools and many more.

Offering all year-round shrub and specimen nursery stock for commercial and amenity landscaping along with garden centre sales, with one of the widest ranges in the Northwest. Come and visit the largest horticultural "one stop shop" in the UK, located just 5 miles from junction 18 of the M6 motorway, or visit our website below for further information.

Tel: +44 (0) 477 571 797  
[marlon@fouroaks-nurseries.co.uk](mailto:marlon@fouroaks-nurseries.co.uk)  
[www.fouroaks-nurseries.com](http://www.fouroaks-nurseries.com)



Four Oaks  
Cash & Carry

Longshoot Road, Lower Withington, Macclesfield, Cheshire SK11 9DX



The largest horticultural "One Stop Shop" in the UK

Specimens trees - compost - pots and sundries

[www.fouroaks-nurseries.com](http://www.fouroaks-nurseries.com) / [marlon@fouroaks-nurseries.co.uk](mailto:marlon@fouroaks-nurseries.co.uk) / Tel: +44 (0) 1477 571 797



## DURAPOST® IS A STANDOUT FENCING SOLUTION



DuraPost® is a standout fencing solution in landscape and urban design, offering durability, sustainability, and style.

The galvanised steel fence posts, aluminium and composite panels resist the elements and require low maintenance, suitable for residential and commercial use.

Its eco-friendly production aligns with sustainable design trends, and its modern look enhances various architectural styles. For strength and aesthetics, DuraPost® is the top choice.

**DuraPost®**  
BY BIRKDALE

Learn more at [durapost.co.uk](http://durapost.co.uk)

## SPRING REACH NURSERY



For all your Autumn planting projects and beyond why not give Spring Reach Nursery a try. Based in Surrey with over 25 years growing experience supplying leading garden designers and domestic landscapers you can expect a top quality service from initial enquiry through to delivery to site or collection. We have a superb choice of hardy nursery stock including some varieties that are not freely available.

- Always holding good stocks of those ever popular lines for immediate impact from large evergreen screening trees pleached panelled trees and multi-stems and specimen shrubs for immediate impact
- Thousands of Herbaceous perennials, Roses and Grasses for giving your design the wow factor in Summer and Autumn
- Conveniently situated just 10 Minutes from Junction 10 of the M25
- Deliveries made using own transport up to 150 miles or further a field by the pallet network.

Contact 01483 284769 | email [info@springreachnursery.co.uk](mailto:info@springreachnursery.co.uk)  
Long Reach Ockham Surrey GU23 6PG

[www.springreachnursery.co.uk](http://www.springreachnursery.co.uk)



## Looking for a sustainable mulch for your next garden project?

Apsley Farms' soil improving mulch is packed with essential NPK nutrients. Acts as effective insulation to protect soil from frost and heat, suppresses weeds and repels slugs and snails whilst improving soil structure and health. Free from peat and waste. Creates added visual appeal to borders and beds. A 100% sustainable by-product of green energy at Apsley Farms.



Delivered in 730L bags or loose loads

5.0 ★★★★★ (205 reviews)



**01264 554433**  
Nationwide delivery  
[www.apsleyfarms.com](http://www.apsleyfarms.com)



## RECOGNISING EXCELLENCE THROUGH ACCREDITATION

Have you ever wondered if there are quality standards around timber decking and cladding products or services? Do you need technical advice or simply design inspiration? Look no further than the Timber Decking and Cladding Association (TDCA). We're here to raise the bar on all things decking and cladding. Whether you're a landscaper, architect, specifier, contractor or DIY enthusiast, we can help. We have industry experience, a library of free resources and a growing member supplier list with independent third-party verification.

To get a job done right first time, using fit-for-purpose materials with correct standards of installation is essential. But whatever the market, it's often difficult for a buyer to distinguish good from bad quality, whether it be a specialised deck fixing or a reputable cladding installer - especially when searching online. Price point isn't always an indicator of reliability.

Step in DeckMark and CladMark. TDCA accreditation schemes which recognise manufacturers, suppliers and installers who work to the highest standards in their fields. From wood coating manufacturers to deck design engineers, simply search our database to pinpoint specific suppliers. Or get in touch - TDCA offers a sourcing service, just give us your project details and we'll find the right supplier for you.

TDCA is a not-for-profit company and the money generated from membership fees and inspection services goes towards its work to raise awareness of fit-for-purpose materials and installation good practice.

Visit [www.tdca.org.uk](http://www.tdca.org.uk) to learn more or call 01977 558147.



The Decking and Cladding Handbooks are produced in partnership with Timber Development UK and are free to download from our website.



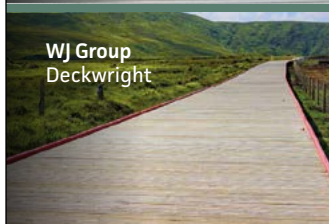
Sourcing for your next decking project?

## Look for the Mark



**Find third-party verified and fit-for-purpose products and installers**

From deck components and design engineers to wood coating solutions and specialised fixings.



DeckMark schemes require a full business audit and assessment followed by annual surveillance audits by TDCA.

The Timber Decking & Cladding Association is an independent, not-for-profit technical and advisory trade body. Recognised as the authoritative source of expert opinion in the UK.

**Get in touch and find a supplier today**

[info@tdca.org.uk](mailto:info@tdca.org.uk) | 01977 558147

[www.tdca.org.uk](http://www.tdca.org.uk)



# WHY IS CERAMIC DECKING INCREASINGLY POPULAR IN RESIDENTIAL PROJECTS?



Exadeck Antico installed in residential garden

If you've been looking for decking solutions, you might have come across ceramic decking. It is one of the newest and most superior options in the decking market, with unrivalled properties. So why is it becoming so popular? Three main reasons: durability, low maintenance, and fire resistance. With increasing awareness of fire safety, homeowners are turning to ceramic decking to help limit fire spread.

Let's look at what ceramic decking is. Exadeck is the flagship ceramic

decking solution from Fire Deck. The decking boards are much thicker than traditional porcelain tiles, with a 26mm depth. They're extruded to create holes through the centre, which reduces the weight while boosting strength by evenly distributing loads. Circles are one of the strongest shapes in architectural design. At a glance, ceramic decking resembles real timber, with printed designs on the surface. The overall structure will appear familiar - it looks like composite decking, but better. Ceramic is heavier than aluminium, which is something

to consider depending on your installation area. In your average garden, this doesn't present an issue. The weight makes it robust and prevents wind uplift when used with our clips.

If you're thinking more about the lifecycle of the products you buy, you're not alone. It's important to consider how decking is made and ensure that it's as sustainable as possible. Exadeck contains at least 41% recycled material, and we recycle residual water, meeting the ISO 14001 standards



to minimise our impact on the environment and reduce our carbon footprint. Designed to disassemble, boards can be recycled or reused. Archiproducts awarded Exadeck the winner of 2022 for sustainability. The expected lifespan of ceramic, which is essentially porcelain, is over 100 years, making it a great choice for a durable, long-lasting outdoor space in your garden.

**Snap, Crack and Rot:** I'm not talking about your breakfast cereal. These are real issues that you might face from composite or real timber decking. Wood, including its composite forms, can splinter and warp. As moisture is absorbed, the form expands, warping and moving the decking structure, creating unsightly (and potentially unsafe) gaps. Ceramic is vitrified with a water absorption rate of <math><0.5\%</math>, therefore has minimal movement. The vitrification also makes it frostproof and weatherproof.

These properties make the decking low maintenance and durable.

Water, especially salt water, is corrosive so the more resistance, the better. If you live by the sea, and you regularly replace your decking, ceramic decking will put paid to that. There is no requirement to seal the boards at all. The vitrification process hardens the boards so much that it's also scratch proof. You'll replace boards far less often than any alternative decks, saving time and money. Ceramic is one of the lowest maintenance materials for outdoor spaces.

**Fun fact:** the print finish is topped with a matt glaze that is UV resistant. The colour doesn't fade and the print is embedded, so there's no need for treatments or colour restorers; you can also forget about woodworm treatments. For the best-looking deck, look for designs with a high number of variations to avoid repeating patterns. Exadeck has 17 variations of each colour. The Exadeck finishes are HD premium timber designs impregnated into the board.

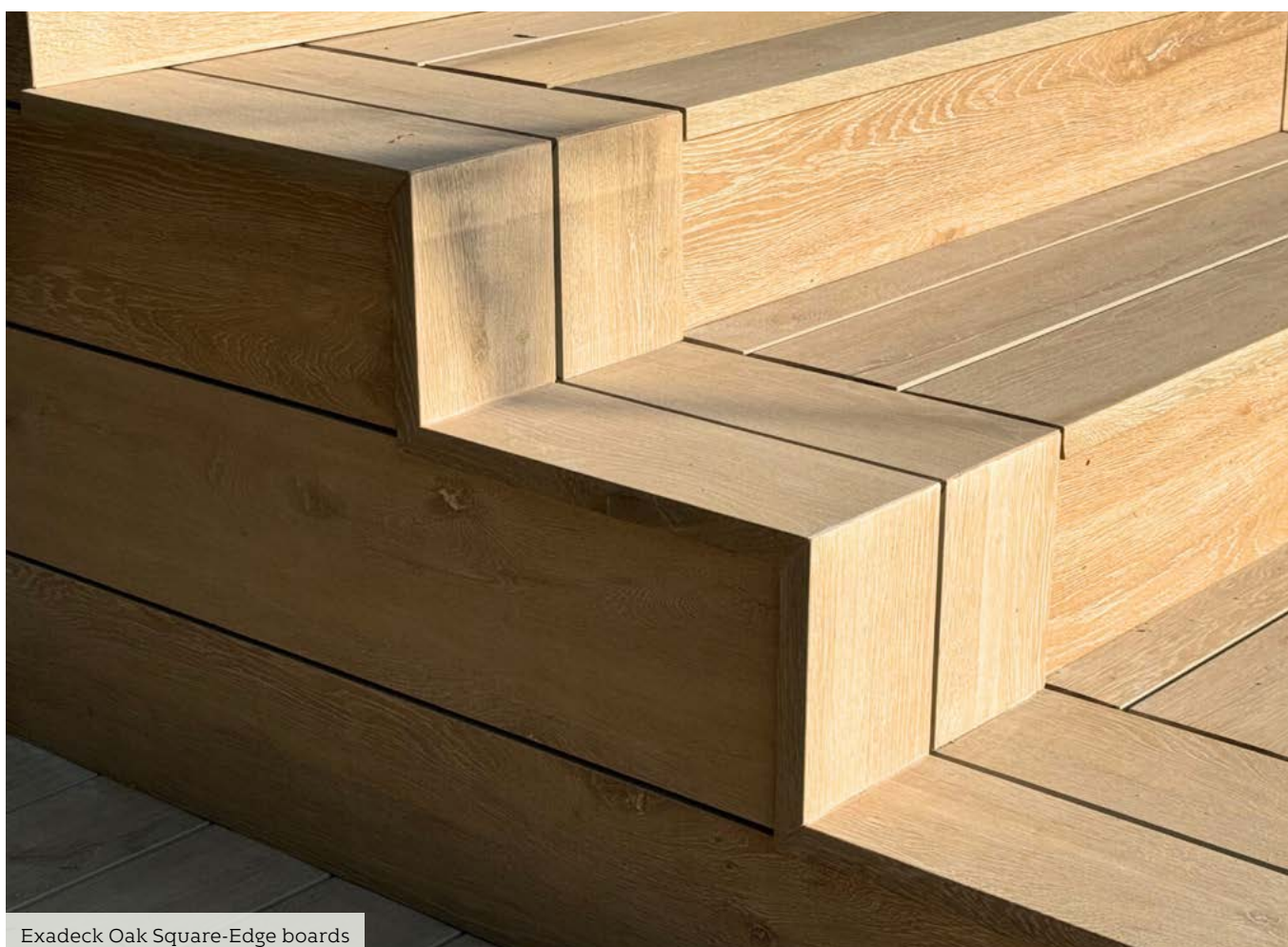
### HOW TO INSTALL

Start by measuring your space. For uneven terrain, you will need to decide whether to pour a concrete platform or use adjustable pedestals with aluminium or timber rails to create a level platform. Substructure centres should be 405mm-600mm apart. Boards can be arranged in linear and staggered layouts. Simply slide W clips through the channels and secure them using a T15 Torx drill bit to screw the clip into your rail. Starter clips hold the boards in place for each row.

Using a wet diamond blade, you can cut the boards to fit your space. Due to its strength, you cannot bend Exadeck to create a curved board. Instead, you can inset the boards into an area, cutting the boards to fit into circular and curved patterns, using aggregate or edging to conceal the exposed edge. Square-edges are available for exposed edge designs.

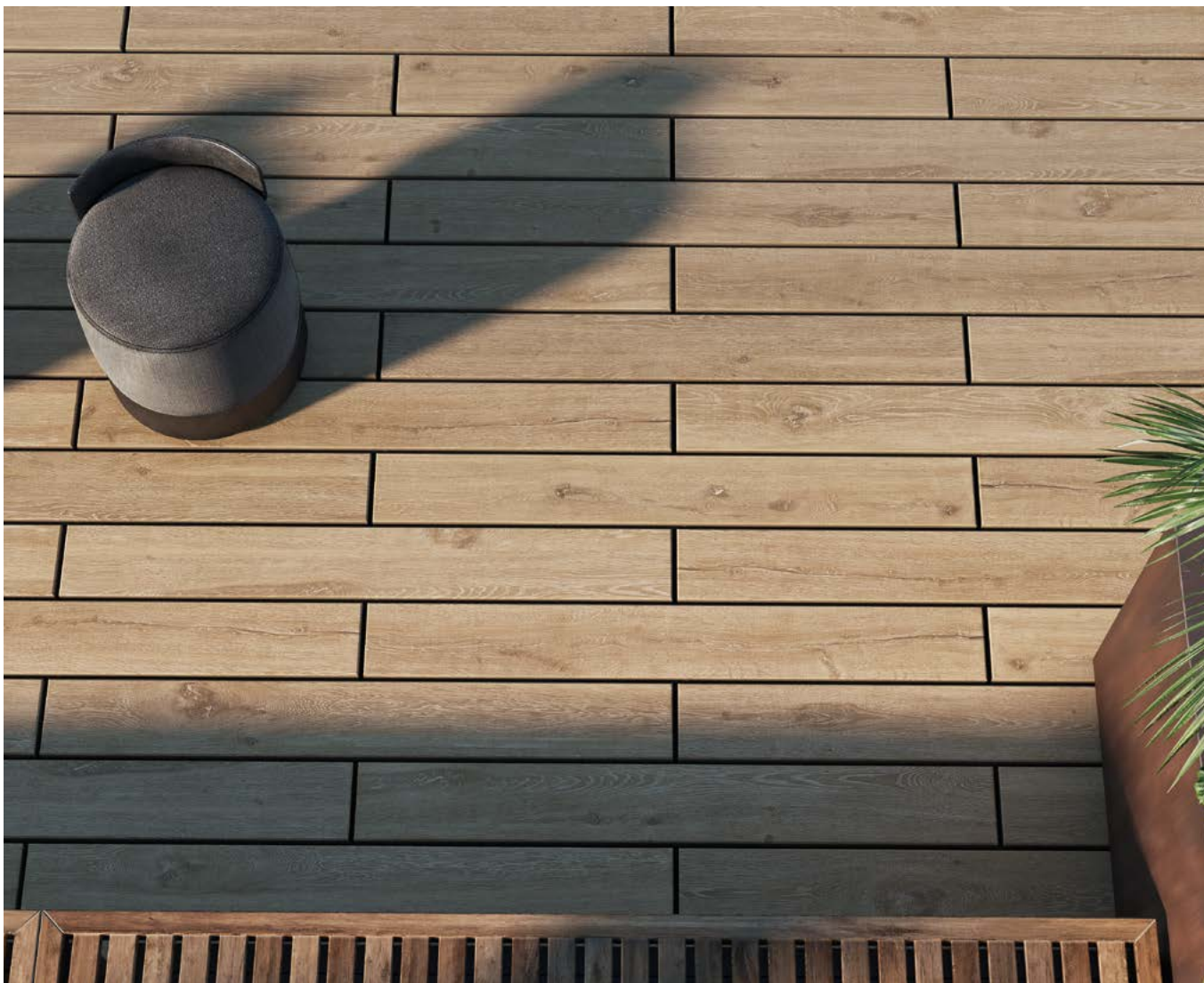
### SAFETY FIRST

One of the biggest reasons to choose ceramic is the fire rating.



Exadeck Oak Square-Edge boards





Exadeck has the highest possible rating, Class A1, making it the safest choice. House fires are absolutely devastating. We understand how critical it is to keep your family safe, which is why SAFETY FIRST is our motto. Ceramic decking minimises fire spread. You can have peace of mind when barbequing and using fire pits in your garden.

Slip resistance is another safety concern when it comes to decking. All types of decking undergo a slip resistance PTV test. When reading these test reports, check the barefoot and shoe pendulum rating. The higher the number, the higher the slip resistance. Look for a good slip rating of R11 or above, the equivalent to a PTV test result between 34-51. Materials like ceramic, that are dense and non-porous, with minimal water absorption, are more slip resistant. The slip rating for Exadeck is R12, at PTV 66.



Exadeck Oak fixed to Wallbarn aluminium rails

Weighing over the vast range of benefits that ceramic decking offers over aluminium, composite and timber decking, it's easy to see why homeowners are making the switch.

For more information, visit  
[www.firedeck.uk](http://www.firedeck.uk) or call  
01264 311 113.





**EXADECK**  
CERAMIC DECKING

Designed to impress.  
Built to last.

**FIRE DECK**

+44 1264 311 113

[www.firedeck.uk](http://www.firedeck.uk)



# MOSO BAMBOO DECKING

## FROM GRIPSURE UK: THE ULTIMATE SUSTAINABLE SOLUTION FOR OUTDOOR SPACES



In the evolving world of outdoor design, consumers and professionals alike are seeking innovative, sustainable, and high-performing materials. Moso Bamboo Decking from Gripsure UK has emerged as a superior choice, outperforming traditional hardwood and composite decking in numerous ways. Its combination of eco-friendliness, durability, and aesthetics makes it a game-changer in the decking industry. Here, we explore the many benefits of choosing Moso Bamboo Decking over hardwood and composite alternatives.

### Unparalleled Sustainability

One of the most significant advantages of Moso Bamboo Decking is its sustainability. Unlike hardwood, which can take decades or even centuries to grow, bamboo is one of the fastest-growing plants on Earth. Bamboo reaches maturity in just five years, making it a rapidly renewable resource.

Traditional hardwood decking often relies on tropical trees harvested from rainforests, leading to deforestation and loss of biodiversity. Moso bamboo,

however, is grown in managed plantations, ensuring minimal environmental impact. Additionally, Moso Bamboo Decking is certified by leading sustainability organizations such as FSC (Forest Stewardship Council) and meets stringent environmental standards, making it an ideal choice for eco-conscious homeowners and builders.

### Strength and Durability That Lasts

When it comes to durability, Moso Bamboo Decking rivals and even surpasses many hardwood options.



Through a specialized process called “Thermo-Density®,” the bamboo fibres are compressed and heat-treated, resulting in a product that is exceptionally hard and resistant to wear and tear. This process gives bamboo decking a higher density than most tropical hardwoods, ensuring it can withstand heavy foot traffic and challenging weather conditions.

Compared to composite decking, which often struggles with issues like warping and fading over time, Moso Bamboo Decking offers superior dimensional stability. Its resistance to moisture, mould, and insects makes it a low-maintenance option that retains its beauty and structural integrity for years to come. Homeowners can rest assured that their investment in Moso Bamboo Decking will pay off in long-term performance.

### Aesthetic Appeal with Natural Beauty

For those who value the timeless elegance of natural wood, Moso Bamboo Decking delivers unparalleled aesthetic appeal. Its warm tones, fine grain, and smooth finish create a sophisticated look that enhances any outdoor space. While composite decking often tries to mimic the appearance of wood, it falls short in replicating the authentic charm that bamboo provides.

Moso Bamboo Decking is available in a variety of profiles and styles, allowing for customization to suit different design preferences. Whether you’re creating a sleek modern terrace or a rustic garden retreat, bamboo decking offers versatility and visual impact that few materials can match.

### Eco-Friendly Manufacturing

The production process for Moso Bamboo Decking is designed to minimize waste and reduce carbon emissions. Bamboo absorbs significantly more CO<sub>2</sub> during its growth phase than is emitted during the manufacturing process, making it a carbon-neutral or even carbon-negative material. In contrast, the production of composite decking often involves petroleum-based plastics and high energy consumption, contributing to a larger carbon footprint.

Furthermore, Moso Bamboo Decking’s end-of-life benefits are noteworthy. Unlike composite materials, which are challenging to recycle due to their mixed composition, Moso Bamboo Decking is biodegradable and can be repurposed or composted, further reducing its environmental impact.





## DECKING

### Cost-Effectiveness

While hardwood decking can come with a hefty price tag due to the costs associated with sourcing and transporting rare tropical wood, Moso Bamboo Decking offers a more affordable alternative without compromising on quality or aesthetics. Its long lifespan and minimal maintenance requirements translate to lower long-term costs compared to both hardwood and composite decking.

Composite decking, while initially more affordable in some cases, often incurs additional expenses for repairs, cleaning, and eventual replacement. Moso Bamboo Decking's robust performance eliminates these concerns, providing exceptional value over its lifetime.

### Ease of Installation

Moso Bamboo Decking is engineered for convenience and efficiency during installation. Its consistent dimensions and pre-machined profiles make it easy to work with, reducing labour time and costs. Professionals and DIY

enthusiasts alike will appreciate the straightforward installation process, which ensures a flawless finish with minimal effort.

### Safety Features

Safety is a crucial consideration for outdoor spaces, and Moso Bamboo Decking excels in this area. Its non-slip surface ensures secure footing even in wet conditions, making it an excellent choice for poolside decking or areas prone to rain. Additionally, its splinter-free surface provides added safety for children and pets.

### A Material for the Future

As the demand for sustainable and high-performance materials continues to rise, Moso Bamboo Decking stands out as a forward-thinking solution. Its ability to combine environmental responsibility with superior functionality and stunning aesthetics positions it as a leader in the decking market.

For architects, builders, and homeowners looking to make a

positive impact on the environment without compromising on quality or style, Moso Bamboo Decking is the ultimate choice. By choosing bamboo over traditional hardwood or composite materials, you're investing in a product that aligns with modern values and meets the highest standards of performance and beauty.

### About Gripsure UK

Gripsure UK is the UK's leader in bamboo products, dedicated to promoting sustainable alternatives to traditional materials. With over 20 years of experience, Gripsure and Moso bamboo combines innovation, quality, and environmental stewardship to deliver products that

---

For more information about Moso Bamboo Decking, visit [www.gripsure.co.uk](http://www.gripsure.co.uk) or contact our team at [info@gripsure.co.uk](mailto:info@gripsure.co.uk)





# Bamboo: Beauty with a conscience.

Step into a world where  
style meets responsibility.

Known for its strength, resilience, and timeless elegance, our bamboo decking and cladding collections are crafted from one of the world's most rapidly renewable resources, transforming outdoor spaces into a harmonious blend of luxury and environmental consciousness. Redefine the art of outdoor living without compromise.

- ✓ Fire rated
- ✓ Co2 neutral
- ✓ Hard & durable
- ✓ Beautiful appearance
- ✓ Easy installation
- ✓ High stability
- ✓ Endless resource
- ✓ Maintenance free

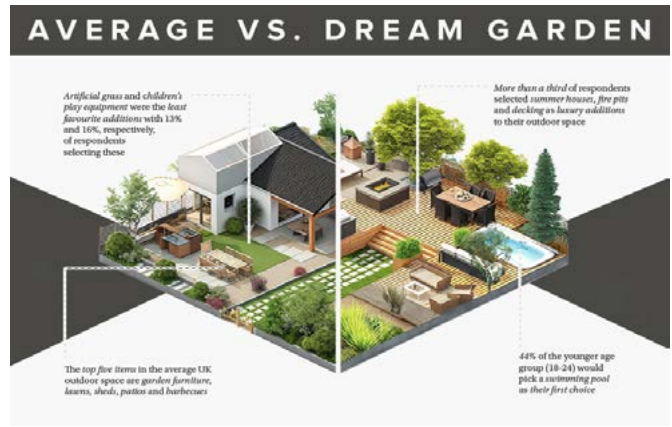
© Reily Imagery

Discover the beauty of bamboo and order your  
**free decking and cladding sample** today.

[www.gripsure.co.uk](http://www.gripsure.co.uk) [info@gripsure.co.uk](mailto:info@gripsure.co.uk) 01726 844616

 **GRIPSURE**<sup>®</sup>  
keeps you on your feet





# WHAT TO INCLUDE IN YOUR DREAM GARDEN IN 2025

As the year draws to a close, spending your days lazing in the garden might seem a distant memory. But soon attention will shift to garden plans for next summer, so here's what most Brits would want to put in theirs.

Research has shown that whilst the average British garden contains outdoor furniture, a patio and barbecue, the UK's dream of their outdoor space including a summer house, decking and a fire pit, with more than a third of UK homeowners choosing these aspirational items if they were creating the gardens of their dreams.

According to new research, 36% of people said they would feature a luxurious summer house in their dream garden, while 34% said a fire pit and 33% chose decking to complete their aspirational space.

The outdoor living trends survey, which was carried out by Trex, the world's number one decking brand, reveals how important people consider their outdoor spaces and reflects how much money they would be willing to spend if budgets were limitless.

While a summer house would cost approximately £5,000 to install

in a UK garden, a swimming pool, arguably the most expensive of dream additions, costs, on average, £20,000 - £50,000.

The inclusion of such aspirational garden features on Brits' wishlists can be attributed to the shift to outdoor living that began during the pandemic. The latest research shows people continue to place a high value on their gardens, seeing them as an extension of their homes.

Social media has also played a role in inspiring peoples' gardens - and, potentially, increased appetites for luxury additions - with the same survey revealing over two-thirds of under-35s use social media platforms for garden inspiration.

Bethany Perez, brand manager for Trex, said: "We're delighted that decking features so high up the list of dream garden additions - but not surprised.

"Decking instantly transforms an outdoor space, it is the perfect base for entertaining, relaxing and alfresco dining and really helps homeowners make the most of their gardens."

## The survey also found:

- Other popular aspirational items included hot tubs (31%) pizza ovens (27%) and a swimming pool (19%)
- 44% of respondents aged 18-24 would pick a swimming pool as their first choice their ideal garden, while 48% of the over 55s went for garden furniture
- Artificial grass and children's play equipment were the least favourite additions with 13% and 16%, respectively, of respondents selecting these
- The top five most common items in the average UK outdoor space are garden furniture, lawns, sheds, patios and barbecues.







Up to  
**25 year  
warranty**

# Introducing Endura:

Your Ultimate Decking & Cladding Solution

Crafted from natural timber and 100% recyclable, enjoy peace of mind with up to 25 year warranty. Splinter-free, slip-resistant, and incredibly durable, it's the perfect choice for both domestic commercial projects.

**Explore the range today!**

**TREKKER**  
LUXURY DECKING & CLADDING

T. +44(0)1483 310800  
[www.trekkerglobal.com](http://www.trekkerglobal.com)





USSPA



Concept Spa

## SPATEX 2025 OFFERS AN EXCITING NEW TAKE ON WATER LEISURE

Kickstart 2025 by taking a deep dive into the exciting world of water leisure at SPATEX 2025. Discover the latest trends, materials and technologies specific to designing water features and building in a water leisure environment.

Whatever the project, SPATEX is the place for architects, builders, pavers, tilers, developers, specifiers to meet over a thousand people from the water leisure industry in one day, and it's free to attend.

Held at the Coventry Building Society Arena, Tuesday 4th to Thursday 6th February, the UK's annual exhibition is your starting point for spas, wellness suites, swimming pools, steam rooms, saunas, enclosures and all the ancillary equipment. With over a hundred exhibiting companies, including all the leading manufacturers and suppliers from around the world, SPATEX 2025 gathers under one roof the industry's key decision-makers. This is where all the conversations that will shape the water leisure market over the next 12 months will take place.

### Innovations

View and compare a host of new innovations, both for the commercial and domestic markets. See, touch and discuss the latest products and take advantage of exclusive show offers. A New Product Zone (sponsored by Swimming Pool News) highlights the products that look set to make the headlines.

The British Swimming Pool Federation (BSPF) will be holding its awards ceremony on the Tuesday evening of SPATEX. Photographs of the winning projects, representing the best examples of design, construction, and installation, will be showcased on stand A1.

### Free learning

With a free double seminar programme in two arenas offering over 40 talks by industry leaders, SPATEX answers the challenge of staying up to date on safety standards and compliance as well as the technicalities of constructing water leisure facilities. For example:

Tuesday 4th Feb 13.50 - 14.10 How to Install A One Piece Pool - Arena 1 - Technical Director at Evi Pools, Alex Kemsley, will be discussing the various methods of one piece pool installation and the important pitfalls to avoid.

Wednesday 5th Feb 12:45-13.15 Planning, Design & Layout of Plant Rooms - Arena 1 - Michael Burnham of Pool Logic discusses how the design of a plant room plays a vital role in the success of any pool project. Discover practical strategies for creating plant rooms that are efficient, functional and a pleasure to work in.

### Sustainability

Discover new technologies and practices, such as eco-friendly construction materials, which can be integrated into green building designs. Saving energy is high on the

seminar agenda and in the products displayed on exhibitors' stands, where you can expect to see the latest heat retention covers, LED lighting, air source heat pumps and super insulated one-piece pools.

### Invest in yourself

Catch over 20 CPD-accredited interactive workshops in Arena 1 curated by the Institute of Swimming Pool Engineers (ISPE). Just one of many industry associations that SPATEX is fortunate to have the support of.

**Expert advice** - Gain the most up-to-date information from over a thousand industry professionals. Some things can only be done in person - bring your plans with you - there's no better place to seek impartial advice from a variety of specialists, and all for free.

Please visit the SPATEX Help Desk at the entrance to the exhibition hall if you need pointing in the right direction.

**Register now [www.spatex.co.uk](http://www.spatex.co.uk)  
SPATEX 2025 - Tuesday 4th to  
Thursday 6th February.**

**The Coventry Building Society  
Arena, Coventry CV6 6GE with  
2,000 free car parking spaces is  
within two-hour drive time of 75  
per cent of the population.**

**For more info: [helen@spatex.co.uk](mailto:helen@spatex.co.uk)  
Tel: +44 (0) 1264 358558**



# SPATEX

THE POOL, SPA & WELLNESS SHOW

TUESDAY 4 – THURSDAY 6 FEBRUARY 2025

FOR MORE INFORMATION AND  
TO REGISTER FOR FREE VISIT:

WWW.SPATEX.CO.UK OR  
CALL +44 (0)1264 358558

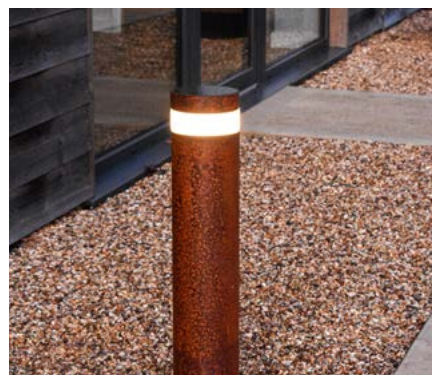


*All sectors of the water leisure industry from pools, spas, saunas, hydrotherapy, steam rooms and play equipment, in the domestic and commercial arenas, are represented at SPATEX.*

**COVENTRY BUILDING SOCIETY ARENA • COVENTRY • UK**



# LIGHT YOUR WAY WITH CORTEN STEEL



Corten Steel has become a very favoured material for a lot of contemporary architects and landscapers. It is currently one of the most popular types of steel widely used in gardens, public places, and private properties. Corten, also known as weathering steel, refers to a range of steels with a chemical composition that creates a stable layer of rust that shields it from further corrosion when exposed to the influence of outdoor weather conditions. This layer of rust is called a patina.

Although the history of Corten Steel is vast, its research started in the 1910s, when steel alloyed with different amounts of copper was exposed to the elements; the research continued into the early 1920s, and around 1926 it was discovered that phosphorus content also helped with the corrosion resistance. In 1933 the United States Steel Corporation decided to use the research they conducted and as a result developed the patented

Cor-Ten®, deriving its name from Cor-rosion resistance and Ten-sile strength.

Initially, this weathering steel was used predominantly in the construction of large public or industrial structures only. Over time, professional designers and architects have started appreciating the unique aesthetic and practicality of Corten Steel and have progressively begun to introduce this into more projects. Corten Steel works great with wood, concrete, glass, or various compositions and greenery, making it a perfect choice for a more contemporary aesthetic, from public buildings to private homes, soaring towers, and even schools. Corten Steel is extremely versatile and has become a preferred material in the industry.

With this in mind, we are delighted to announce the introduction of our new Pro Solar Litecharga 800mm Bollard Light in Corten Steel! This bollard light has various features

and benefits. It is solar-powered with up to 24 hours of illumination time, has a 2-meter spread of light, and it has an IP65 rating making it completely protective against dust and resistant against low-pressure jets of water. The Litecharga Corten Steel is perfect for lighting up both residential and commercial areas as this design will fit with both aesthetics.

This bollard will be one of our first solar-powered bollards to be equipped with a Colour temperature switch, also known as a CCT. This switch will allow the user to switch the bollard between daylight white and warm white accordingly during installation.

**Visit our showroom and see the Litecharga Corten in person. Head over to our website for more information. For enquiries, please contact [sales@lumenalights.com](mailto:sales@lumenalights.com) or call us today at 01327 871161.**





**LUMENA**<sup>®</sup>  
OUTDOOR & GARDEN LIGHTING  
QUALITY THAT IS GUARANTEED



**TRIMINA - 3 Way Directional Light**



**EYELITE - Eyelid Step Light**



**SLATLITE - Louvred Step Light**



**QUADMARKA - 4 Way Marker Light**




**DUOMARKA - 2 Way Marker Light**




**DECIMAX - 316 Stainless Steel Recessed Light**

We have a wide selection of recessed lights and surface mounted step lights perfect for use with decking and more.

Lumena Lights offer a variety of outdoor lighting designs; mains bollards, professional solar lighting and garden lighting for all designs and considerations. For more information on how we can assist with your project please contact us.

 [www.lumenalights.com](http://www.lumenalights.com)

 [sales@lumenalights.com](mailto:sales@lumenalights.com)

 01327 871161

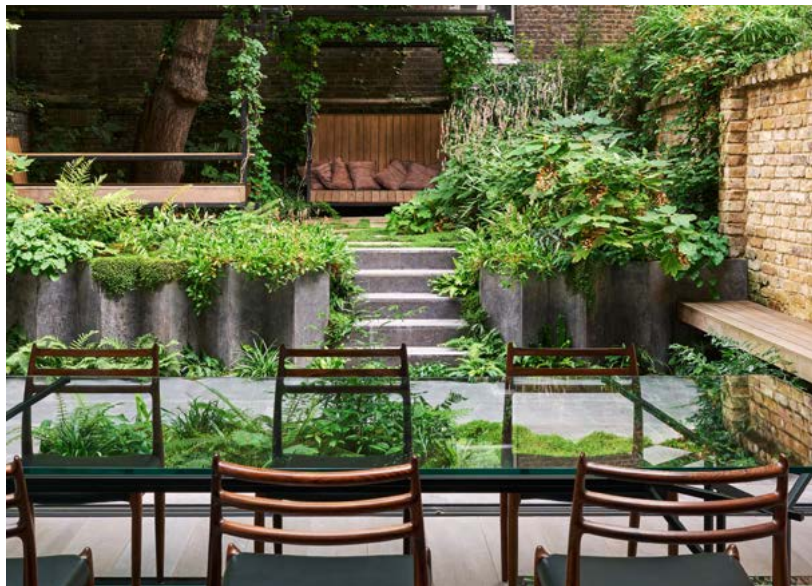


**SCAN QR CODE TO  
DOWNLOAD OUR FULL  
CATALOGUE OR REQUEST  
YOUR FREE HARD COPY**





## OFFERING UNPARALLELED EXPERTISE IN NATURAL STONE AND MASONRY



Stoneworld customers benefit from our ability to bring complex visions to life with unmatched accuracy. Our commitment to integrating modern technology with traditional craftsmanship ensures that each project not only meets but exceeds client expectations. Whether it's crafting bespoke curved stone steps or seamlessly integrating stone pieces into stainless steel structures, our capabilities redefine possibilities in contemporary stone design.

Our collaborative approach and dedication to excellence make us an ideal choice for those looking to elevate their projects with high-quality, custom stone masonry. Talk to our team of experts today to find out how we can help bring your project to life in the highest quality natural stone.

[www.stoneworld.co.uk](http://www.stoneworld.co.uk)

At Stoneworld Oxfordshire, we offer unparalleled expertise in natural stone and porcelain masonry, making us an invaluable partner. Equipped with cutting-edge technology, including a 7-axis robotic stone carver and digital templating tools, we ensure precision and innovation in every project. Our state-of-the-art masonry workshop allows us to create bespoke stone features, from intricately designed ecclesiastical sculptures to custom staircases and landscaping elements.

A photograph of a large industrial robotic arm in a workshop. The arm is white and grey, and is positioned in front of a corrugated metal wall. The word 'STONeworld' is overlaid in a dark green oval. A QR code is in the top left corner with the text 'SCAN ME' below it. At the bottom, there is a dark green banner with white text: 'BESPOKE MASONRY SERVICES', 'STEPS | COPINGS | PIER CAPS | SCULPTURE | PAVING | WALLING | ROCKERY', and contact information: 'www.stoneworld.co.uk (01844) 279 274 sales@stoneworld.co.uk'.





# 'Best in Class'

## Unique & Unrivalled Paving Jointing

# GftK vdw 850+



- Keep jointing in cold (> 3°C)
  - Keep jointing in wet weather
  - No delays - No waiting to joint
  - No concerns over water in joints
  - No waiting to clean off
  - No washboy required
  - No haze & No efflorescence
- +
- Easy wet-slurry application
  - Very high flow & self-compacting
  - No tooling or finishing required
  - Fast curing & hardening
- +
- No shrinkage cracks
  - Highest joint performance
  - Optimum strengths & flexibility
  - Fully resistant to traffic, de-icing salts, and jet-washing

### The only truly wet weather jointing

**NCC** Streetscape

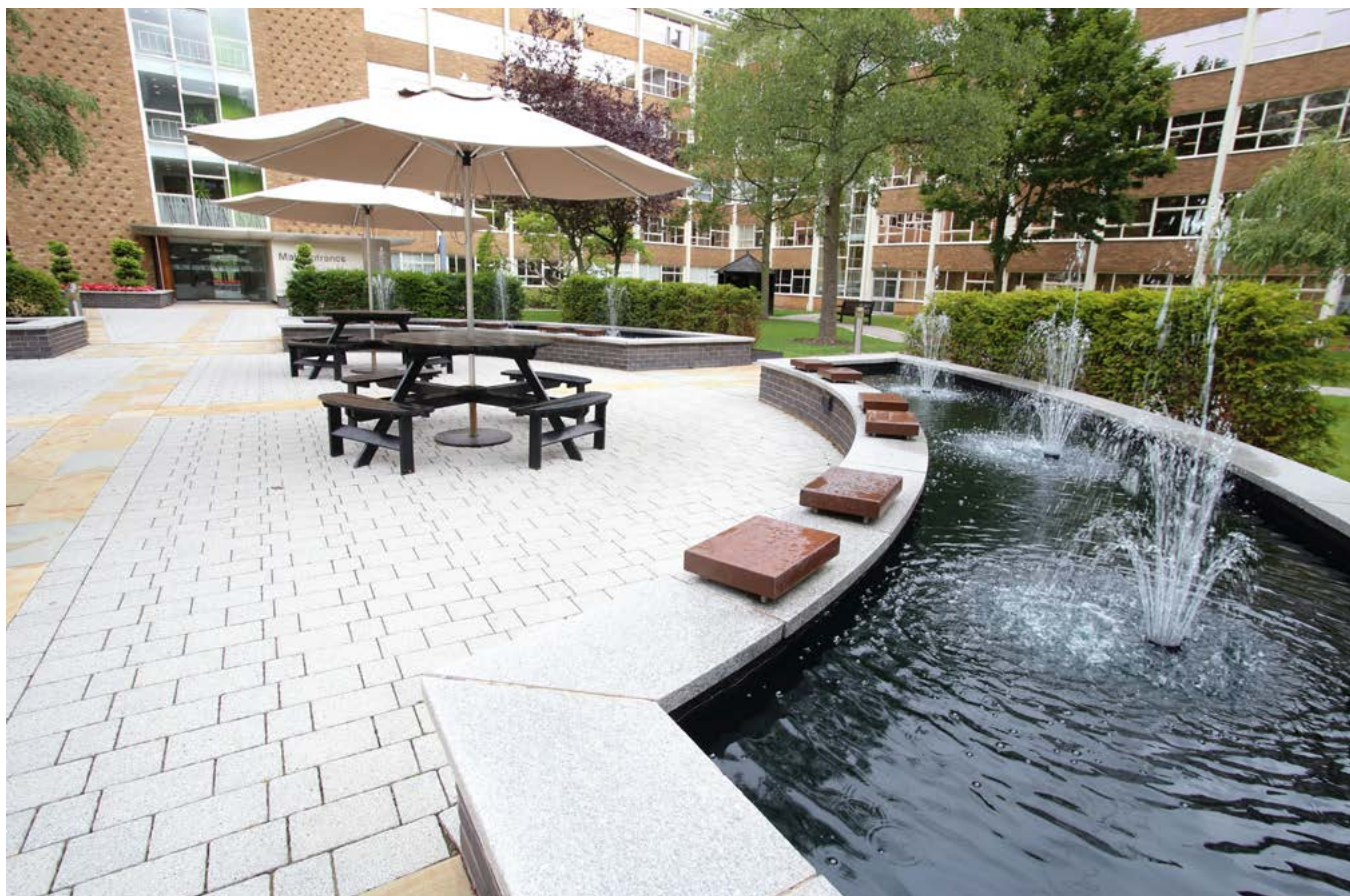
Visit: [www.NCCStreetscape.co.uk](http://www.NCCStreetscape.co.uk)  
 Email: [sales@NCCinAction.co.uk](mailto:sales@NCCinAction.co.uk)  
 Call: 01257 266696



# REPOINTING UNBOUND

## ‘FLEXIBLE’ PAVING

### SAVE TIME & MONEY - GFTK VDW 850+



Birchwood Business Park is owned by Warrington Borough Council, and it is one of the largest business parks in the Northwest, with many nationally important companies on the site. The park layout uses an interconnected network of paved pathways and pedestrian areas, linking communal seating areas with planting zones and water features. These are predominantly paved with butt-jointed, reconstituted granite stone blocks, together with some highlight areas of natural sandstone slabs.

The paving was originally laid as unbonded, flexible paving, meaning the granite blocks and sandstone slabs, were laid, butt-jointed, in sharp sand over compacted sub-base (e.g. MOT type-1), and the narrow joints (~ 5mm), were filled

with ‘jointing sand’. However, over longer periods of time, this is not particularly durable, as the sand can be washed out, and unsightly weed growth starts from seeds that are wind-blown and from bird droppings, germinating in the joints. After a few years at Birchwood Park, this weed growth needed to be removed, toxic weedkiller applied, and the joints refilled with sand, at least once or more every year, to keep the areas looking their best, and this was obviously increasingly expensive. Additionally, people working at Birchwood Park were not happy when their access and relaxation areas became unsightly, plus the necessary restrictions on their access and use of the areas whilst these noisy and dirty works were carried out, was very disruptive, generally in the Spring

and Summer months when use of the paved areas was most popular. They were also not happy with the repeated use of the toxic chemicals in their environment.

These cleaning and refurbishment works were becoming more extensive, disruptive and the costs were increasing significantly every year, for the owners and their Facilities Maintenance Contractors, J.M. & M. Scanlon from Warrington. Therefore, back in 2017 they decided to see if they could find an alternative, less disruptive and non-toxic solution, to prevent plant growth in the joints, and to eliminate or reduce the need for such disruptive and expensive annual refurbishment works.



Several solutions were proposed and trialled, to find the most effective, durable, and cost-efficient solution, including one from NCC Streetscape, the paving jointing specialists, who J.M. & M. Scanlon had found online at the very informative NCC Streetscape website ([www.nccstreetscape.co.uk](http://www.nccstreetscape.co.uk)). The NCC recommendations, were to thoroughly clean the surfaces, completely remove any residual sand, dirt, and weed growth from the joints, by using high-pressure jet-washing, then to permanently fill the joints by repointing them using wet-slurry techniques with the unique, GftK vdw 850+ paving jointing mortar.

GftK vdw 850plus is unique and the 'state-of-the-art' in paving jointing. This is a very high-performance, 2nd-generation, 2-part, epoxy resin-based paving joint mortar, which is easily wet-slurry applied across the pre-wetted, clean paved surfaces, where it very effectively self-compacts into the joints, with no additional tooling or finishing required. After allowing 24 hours to harden, the areas can be reopened to the residents - Job done - permanently!

Within the first year after the trials that were carried out in 2017 by specialist paving contractors, CR Services, it was already very clear to everyone involved that this alternative solution, was also by far the best option, which provided the owners and their facility managers with the ideal long-term

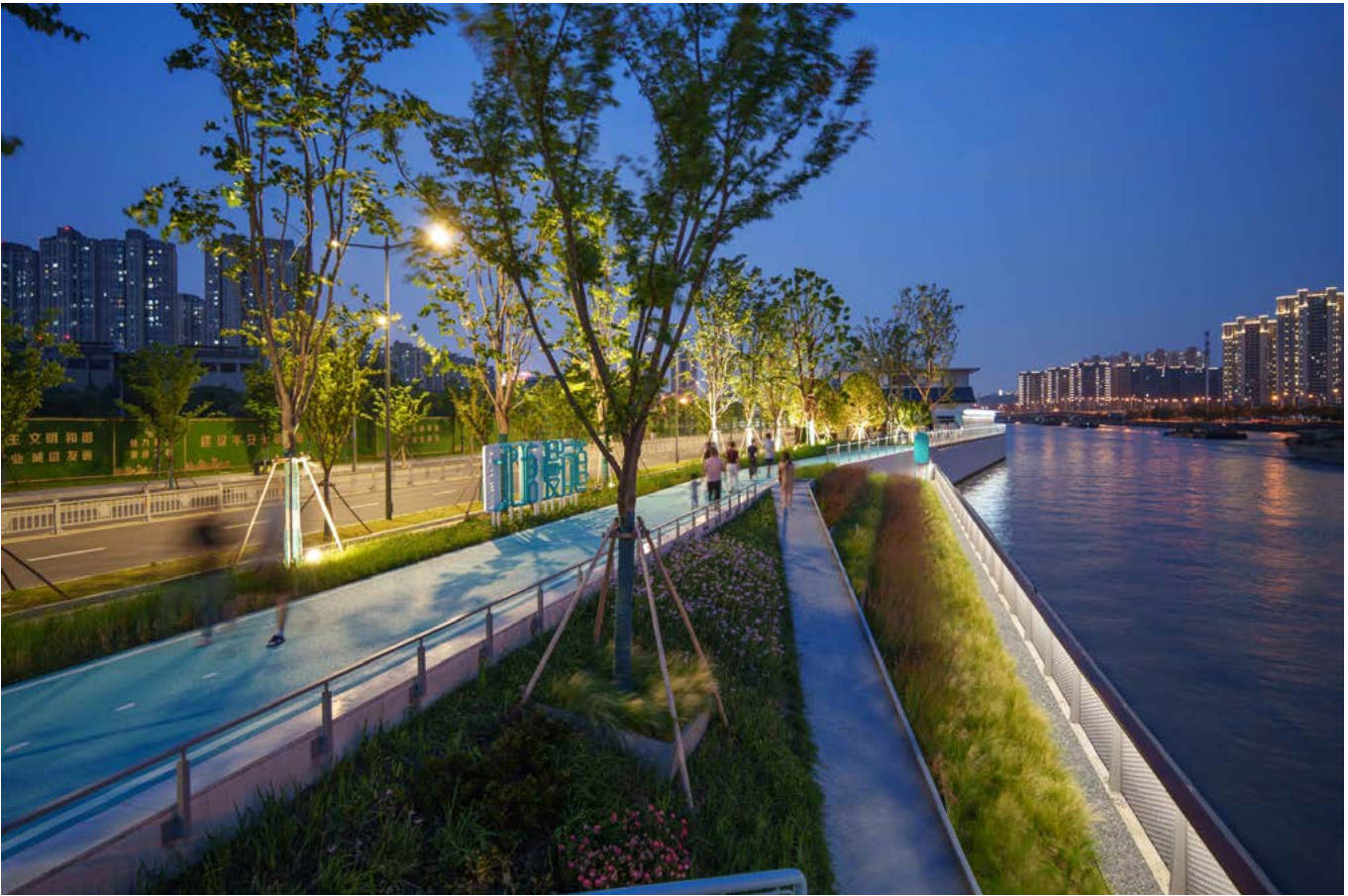
solution. Since 2018, C.R. Services have continued to work with J.M. & M. Scanlon to undertake the refurbishment and repointing of the paving in this way, and now, some seven years later, in 2024, the team have completed the refurbishment and repointing of the more than 8,000 m2 of this natural stone block paving, which was carried out in six annual phases.

As a result, the Birchwood Business Park owners and their tenants are already benefitting from less disruption, and significant cost savings, as the progressively completed areas of paving have required none of the previously essential annual weed growth removal, weedkiller application, joint cleaning and waste disposal, then resanding, as required in their previous routine maintenance treatments, for the past 6, 5, 4, 3 and 2 years respectively now. Also, very importantly, these savings will continue to grow, as the joints in this paving will not now need any further treatment for many more years; the paved surfaces will just require normal paved surface cleaning as and when required. Incidentally, this GftK jointing solution also makes future surface cleaning much faster and easier, as the materials are fully resistant to jet-washing, even to the use of mechanical street cleaners. The Project Leader from Scanlon recently commented: "The first phase of the GftK jointing that we installed as a trial back in 2018, actually still looks good as new."



Visit our Repointing Unbound 'Flexible' Block Paving page: <https://nccstreetscape.co.uk/paving-jointing/flexible-jointing-unbonded-block-paving.html>  
 Also, visit our specialist paving repointing pages: <https://nccstreetscape.co.uk/type-of-area/paving-repointing.html>  
 Contact details:  
 Website: [www.NCCStreetscape.co.uk](http://www.NCCStreetscape.co.uk)  
 Email: [sales@nccstreetscape.co.uk](mailto:sales@nccstreetscape.co.uk)  
 Tel: 01257 266696





# RECONSTRUCTION OF URBAN MEMORY

In May 2022, the renovation and upgrading plan for the Beijing-Hangzhou Grand Canal (Wuxi section) was completed, proposing a design strategy of gradual implementation of “renovation, revegetation, connection, revitalization, and empowerment”. In 2023, Liangxi District of Wuxi City launched the construction of

the waterfront space in the Beitang Street section. The entire project is about 3.6 kilometers long. The starting point is at Jieguan Pavilion Alley on Beitang Street, and the end point is the planned and under-construction Beijian Park. It is a waterfront green corridor connecting Beijian Park and the park belt along the ancient city moat.

be used for improvement. The different construction statuses of the two sections pose different requirements for the design. At the same time, the current space of the entire section is relatively narrow. Except for a few enlarged spaces, it is basically a linear waterfront space 10 meters wide, which poses a great challenge to realizing a continuous, comfortable, and convenient slow traffic system.



Renovation and new construction. In the northern section (Shanbei Bridge - Fengxiang Bridge) within the 3.6-kilometer section, except for a small amount of remaining dock facilities, there is basically no construction content and can be regarded as new construction. In the southern section (Fengxiang Bridge - Jiangjian Bridge), there are already many landscape facilities and greenery, and only a local renovation strategy can

Culture and vitality. Although there are many “scenic spots” in the current situation, the spaces and functions are relatively single and cannot meet the broader demands of citizens for riverside activities and are also lacking in attractiveness to surrounding community residents. Therefore, changing the current situation of “only cultural scenic spots and no vitality facilities” is an important task of this project. Urban





and Memory. How to take advantage of the opportunity of the slow traffic lane connection and flood prevention compliance project, combine the existing cultural scenic spots and water conservancy remains, recreate a new IP for the canal waterfront space, and reshape the new urban memory of the Grand Canal is the beautiful vision that this project hopes to show.

**Strategy of being close to and seeing the water**

Being close to the water , Thinking about the setting of the comprehensive slow traffic lane Limited by the original revetment situation, the current footpath is not completely set close to the water. In this update, the comprehensive slow traffic lane is preferably set close to the water’s edge to enhance the feeling of being close to the water as much as possible. Seeing the water, Thinking about the flood prevention wall : According to the requirements of flood prevention compliance, some revetments need to be heightened

or newly added. In order to better be close to and see the water, the compliant revetment uses the strategies of “retreating” and “being transparent”. Combined with the current situation, the view of seeing the water is opened up as much as possible to reduce the negative landscape impact of the solid flood prevention wall.

Look into the distance, enjoy the scenery from a high place : People all like to look into the distance. In order to meet the expectation of looking at the distant scenery, multiple small places or structures for “climbing up and looking into the distance” are intentionally provided in the design, which unexpectedly are liked by the participants. No breakpoints, Connection within limited space: At the nodes of municipal water conservancy buildings, the effective passage width close to the water is only 1.1 meters. The design lifts the footpath to the top of the flood prevention wall. By using the 0.5-meter thickness of the flood prevention

wall itself, the passable width is expanded to ensure the comfort of the waterfront walking space.

**Reconstruction of urban memory**

Dock stories. Wuxi is a “dock city” that prospers because of the canal. The docks once spread all over the banks of the canal became a beautiful landscape and also formed a characteristic dock culture. With the changes of times, most docks have withdrawn from the historical stage, leaving only abandoned crane pile caps to witness this period of history. Water conservancy hub. The Jiangjian Water Conservancy Hub is one of the eight control buildings of the large enclosure on the east side of the canal in Wuxi City. In the plane design of the entire hub, the space above the water surface of the inlet and outlet canals of the pumping station on the right bank is used for greening and landscaping, integrating with the landscape belt on the right bank. The original plane shape is designed in the shape of a “fish”. A cylindrical building is arranged on the left bank and named “Granary of the World”, continuing the history of the “rice market” culture. In addition to meeting the connection of the comprehensive slow traffic lane in the design, all spaces are opened up as much as possible and corresponding cultural landscape functions are implanted.

Understory museum. In the open understory space in the south of the hub, an accessible leisure square is formed, and the enclosure of the transformer box is created into a display wall for the construction of water conservancy facilities, forming an open miniature museum.







Waterfront promenade. The native vegetation on the north side of the water conservancy hub is relatively good. The update mainly focuses on the connection of the slow traffic lane. At the same time, the original water platform is also considered together to form a new blue waterfront promenade on the side of the water conservancy hub. At the platform, one can see the canal up close and view Huishan Mountain from afar, becoming a new check-in point.

### Cultural allusions

Renovation of service facilities. In this project, several traditional scenic spot facilities are retained. Two design strategies are reflected in the design: First, the newly added flood prevention facilities do not affect the original experience of being close to and seeing the water; second, leisure service functions are added according to local conditions.

Cultural identity display. Along the Grand Canal in Wuxi in the Qing Dynasty, "eight sections of rice markets" were formed, becoming the top of the four major rice markets in China and also the largest rice market in the canal. Most of the rice shops are distributed in Sanliqiao and Beitang areas, and it has always been the most prosperous area for Wuxi's grain business. Therefore, the element of "rice" runs through the entire project. At the same time, the Grand Canal is loaded with rich historical and cultural connotations and has created a number of historical celebrities who shine through the ages. Digging and sorting out materials such as poems, historical events, cultural relics, local customs, and administrative systems along the canal are used as important humanistic display contents. This project is explained and displayed through diversified signs.

### Construction of a city-friendly environment

Age-friendly. Carry out space design and function layout from an age-friendly perspective, accurately grasp the daily needs and space usage status of all age groups, so that all people who come to the base can enjoy a friendly, healthy, and diverse waterfront environment and services. According to the current conditions, this project has set up four children's and fitness venues.

Dock paradise. At a small existing alongshore loading and unloading dock about 100 meters long, using the dock floor, retreating the flood prevention wall, and expanding the activity field, it is transformed into a dock paradise integrating multiple functions such as parent-child activities, fitness, and rest. Waterfront fitness square and children's playground. In the relatively narrow linear space in the





middle section, small fitness and children’s spaces are retained and newly set up as much as possible. Rice Treasure Paradise. Between the original big trees on the south side of the understory museum, a children’s theme park is inserted. Still combining the cultural concepts of the original water conservancy facilities “land of fish and rice” and “rice market”, with the concept of “three grains of rice”, various amusement facilities are organized to form an extremely attractive children’s world. Barrier-free design. Barrier-free design is not only about function and specification, but also about respect, understanding, and care for users. Fully considering the feelings and needs of users makes the design more interesting, more friendly, and warmer.

**Conclusion**

In history, the rerouting of the canal has brought new development

opportunities to the city and also created a new urban texture. The project is located at the junction of the ancient canal in Beitang section of Wuxi and the current Grand Canal, witnessing this transformation and change of time and space. The design targets the long and narrow strip of urban roads and river revetments, integrates with water conservancy infrastructure, connects historical remains and green spaces to the urban slow traffic system, realizes dialogue with surrounding communities, and boosts the attractiveness of the waterfront space with an amiable and friendly attitude, reestablishing the memory and emotional connection between the Grand Canal and the people.



**Architects:** Da landscape Landscape  
**Architects:** Zebai Landscape  
**Year:** 2024  
**Photographs:** Jin Xiaohui  
**Lead Architects:** Yang Xiaoqing



# GREENBLUE URBAN'S SUDS SOLUTIONS TRANSFORM WOOD STREET



GreenBlue Urban is delighted to showcase our collaboration on the transformative Wood Street project in Cardiff, executed in partnership with Arup, Cardiff Council, and Knights Brown. This initiative significantly enhanced the local community by addressing urban challenges through innovative green and blue infrastructure.

The project removed 6,800m<sup>2</sup> of impermeable surface from the combined sewer system, ensuring resilience against 1 in 100-year rainfall events. Road space was reallocated to create wider pavements, integrated seating areas, enhanced cycling infrastructure, and new green spaces. This transformation from a grey, urban street to a vibrant green space improved air quality with 25 semi-mature trees, six large biodiverse rain gardens, and three sedum-roofed bus stops.

## Commitment to Quality

Despite the potential for value engineering to reduce green infrastructure, all stakeholders remained committed to nature-based solutions. Multidisciplinary coordination meetings and designer-contractor workshops ensured that the trees and planting were installed as designed, even when site limitations necessitated minor adjustments.

As a gateway to the city, Wood Street now improves accessibility from adjacent southwest wards, enhancing visibility and safety. The tree-lined street connects more people to green spaces, particularly benefiting commuters and workers in Central Square.

## Overcoming Challenges

The project team creatively navigated numerous utilities and flat

site conditions to ensure adequate soil volumes for tree health and effective water flow into SuDS features. Engagement with various stakeholders throughout the design and delivery phases was crucial to resolving potential conflicts.

Utilising the GreenBlue Urban ArborFlow SuDs solution, with RootSpace soil support cells, Root Management and Irrigation products, and the specially designed soil, ArborSoil HydroMax. This manufactured soil is designed to be used in tree pits and rain gardens to maximise the pollutant removal, encourage healthy tree and plant growth and deal with large volumes of water in extreme rain events. The SuDS features treat highway runoff, reducing contaminants. The diverse planting, including native species, attracts pollinators and enhances local biodiversity.

## Testimonial's

Ian Titherington of the Welsh Government praises the project as "an exceptional example of what can be achieved with SuDS in a heavily developed city centre."

Dan De'Ath, Cabinet Member for Strategic Planning and Transport, lauds the transformation for its visual improvement and flood mitigation benefits.

The multi-award winning scheme, was recently crowned the winner at the 2024 SuDSdrain awards for Regeneration and retrofit - small scale.

The project exemplifies the successful collaboration between Arup, Cardiff Council, Knights Brown, and GreenBlue Urban, showcasing our shared dedication to creating sustainable, healthy urban environments through innovative SuDS solutions.

---

**Contact us today to learn more  
about our ArborSystem suite of  
products and how we can assist you  
in your next project.  
E. [Hello@GreenBlue.com](mailto:Hello@GreenBlue.com)  
[Greenblue.com](https://www.Greenblue.com)**



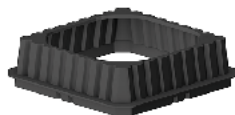
# GreenBlue Urban for all your tree planting needs

IN STOCK.  
AVAILABLE  
NEXT DAY



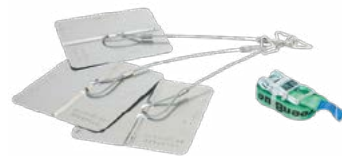
## RootSpace

Suspended pavement support system for urban tree planting.



## Root Management

Protect below ground utilities and above ground infrastructure.



## Underground Guying

Discrete, secure guying options for securing rootballed trees.



## Tree Guards & Grilles

Protect new and existing trees from damage and vandalism.

T: +44 (0)1580 830 800  
E: [enquiries@greenblue.com](mailto:enquiries@greenblue.com)  
W: [greenblue.com](http://greenblue.com)





# PORADA EVEN GREENER: 8,000 NEW PLANTS IN ITS FORESTS IN BURGUNDY, FRANCE



Porada's commitment to environmental sustainability continues, particularly in relation to the company-owned forests located in Burgundy, France.

Since 2011, Porada has pursued a strategy of investment in the French land to guarantee a sustainable and certified supply of ash wood for the production of its furniture. This ensures supervision of the wood management and procurement phases, while reducing the environmental impact of purchasing raw materials from external suppliers.

Over the years, the forest's surface area has increased to 260 hectares located in several municipalities of

Burgundy: Vitry Lache, St-Aubin des Chaumes, Devay, Thaix and Remille, in the Nièvre department.

For Porada, the forest is not only an area destined for timber production, but also an ecosystem to be preserved in compliance with the laws and regulations set by the French government, which include biodiversity monitoring (the forests do not only contain ash trees, but also oak and cherry trees, to name just a few), soil protection, and water conservation. All these regulations aim to protect the national environmental heritage.

The year 2024 marks an important date for Porada's care of its forests, thanks to a significant replanting

of a 10-hectare area with a total of 8,000 plants. The new shrubs will be closely monitored during their development, and only about 600 trees per hectare are expected to reach full maturity to ensure proper growth and high wood quality in the long term.

This first replanting phase will be followed by new ones over the next few years with the aim of constantly supporting the well-being of the Porada Forest.

"Neither I nor the next Porada generation will ever see the full maturity of these new plants," says Tiziano Allievi, Managing Director of Porada. "It is our legacy to future generations, who will thus know





that our thoughts today are also with them," he adds.

Responsible forest management, combined with replanting with a targeted selection of shrubs, is a tangible corporate commitment that contributes to ensuring the well-being of the Porada Forest, a sustainable source of supply for future generations.

### **PORADA**

An Italian family-run company, which has now transitioned into its third generation, Porada is a Made in Italy excellence that has been exporting home furniture all over the world since 1948. Drawing on the know-how derived from over 70 years of experience in woodworking, Porada develops products that are the balanced result of craftsmanship, innovation, design, elegance and enduring quality.

The collaboration with Italian and international designers and the network of agents and customers all over the world allows Porada to be well present and available on all distribution chains worldwide.



[www.porada.it](http://www.porada.it)



# NICHOLAS PEARSON ASSOCIATES



ICE South West Award winner 2024: Prior Park, Bath

We are an award-winning independent consultancy known for our excellence in providing Environmental Design services within the UK's planning and development sectors. Our track record showcases a proven ability to deliver successful, sustainable projects in environmentally and historically sensitive locations.

At the core of our success is a dedicated team of skilled Landscape Architects, Ecologists and Visualisers committed to bringing our clients' projects to life. We specialise in designing and implementing solutions that consider sustainability from the outset and integrate seamlessly with the natural and built environment.

We excel in collaborating closely with design teams, clients, and co-consultants to design, restore and deliver green and blue infrastructure projects, including parks and open spaces, Sustainable Drainage Systems (SuDs), lakes, treatment works, watercourses and coastlines.

We have a proven track record of delivering climate-resilient infrastructure solutions and prioritise shaping environments that can adapt to and address the challenges of climate change. Through a comprehensive approach, encompassing Landscape and Ecological Design, Masterplanning, and green solutions, we empower our clients to future-proof their projects and align with climate-conscious goals.



Land at North Stevenage - Visualisation of proposed SuDS basin

Central to our philosophy is a commitment to working in harmony with the landscape and with nature, fostering a sustainable future regardless of project scale. Our team of landscape architects use Landscape and Visual Impact Assessments to understand a site's context, and the factors that

contribute to or detract from its sense of place. That understanding provides a powerful foundation for developing landscape designs that both complement and enhance a site, enrich lives, and deliver true Biodiversity Net Gain.

With a keen understanding of the interplay between the built environment and human experience, our team can help you create landscapes that inspire, rejuvenate and foster well-being. Whether it's working with nature, promoting community interaction, or integrating sustainable systems, our designs are about more than simple aesthetics, enhancing the quality of life of those who inhabit and interact with our thoughtfully curated spaces.



Contact us at Nicholas Pearson Associates to start a conversation on how we can work with you to bring your project to fruition. Let us use our expertise to help you realise your aspirations while championing a more sustainable future.

Tel: +44 (0)1225 876990  
Web: [www.npaconsult.co.uk](http://www.npaconsult.co.uk)



# NICHOLAS PEARSON ASSOCIATES

Designing a better environment for our shared future



We are an independent, award-winning, multidisciplinary consultancy.

We provide complementary expertise in:

**Environmental Design, Landscape Architecture, Ecology** and **Visualisation**

For over 40 years we have brought a collaborative approach to delivering high quality, environmentally and socially responsible projects. We support a cross-section of clients at all stages of the planning, design, construction, and management process.

## Our Complementary Specialisms

Environmental Design



Landscape Architecture



Ecology



Visualisation



## Get in touch

The Farm House,  
Church Farm Business Park,  
Corston, Bath,  
BA2 9AP

Tel: 01225 876990

info@npaconsult.co.uk

## Follow Us



[www.npaconsult.co.uk](http://www.npaconsult.co.uk)

[www.npavisuals.co.uk](http://www.npavisuals.co.uk)



Find us online





Sustainable street planters, benches, and bins to create environmentally friendly spaces.

For more information on Amberol's products call 01773 830 930 email sales@amberol.co.uk

[www.amberol.co.uk](http://www.amberol.co.uk)

/AmberolUK

@amberolUK

Planter Enhancement range



**+50** MAKING A VISIBLE DIFFERENCE FOR OVER 50 YEARS



**Creating inspiring street scenes**

Bespoke Seats - Safety Railings - Giant Bollards - Security Products



CIS Street Furniture have the 'measure' of your next project

Why not call our sales team to assist?

**T: 01483 203388**

[www.cis-streetfurniture.co.uk](http://www.cis-streetfurniture.co.uk)

[E: sales@cis-streetfurniture.co.uk](mailto:sales@cis-streetfurniture.co.uk)





## SUPERCHARGE YOUR STRATEGY FOR CLEANER, TIDIER STREETS TODAY

At Smartstreets we specialize in helping towns, cities and campuses turn the tide on cigarette and gum litter. We have created a unique, award-winning cigarette bin system which installs onto existing sign posts and lamp posts to create networks of disposal points that are always within reach. Simple, seamlessly integrated and very effective.

**smartstreets™**  
better by design



Cigarette and gum Smartbins  
Minibin pocket ashtrays  
Transformational Cycleparks  
Smartstreets-Gumboards

Contact us today  
**0800 328 9390**  
Email: [sales@smartstreets.co.uk](mailto:sales@smartstreets.co.uk)  
[www.smartstreets.co.uk](http://www.smartstreets.co.uk)



# PICTORIAL MEADOWS TRANSFORMING GRASSLANDS FOR BIODIVERSITY AND BEAUTY



The Mega Flora project, a pioneering collaboration between North Lanarkshire Council and the innovative planting experts at Pictorial Meadows, is redefining urban green spaces in Motherwell and Strathclyde Country Park. From residential areas to a repurposed red ash football pitch, this ambitious initiative is transforming landscapes into vibrant, flower-rich meadows while addressing biodiversity loss, climate challenges, and budget constraints.

At its heart, Mega Flora combines ecological enhancement with practical benefits. Pictorial Meadows' specialist Landscape Team has sown over 53 million perennial seeds across 70,000 square meters in 130 plots, creating stunning meadows that attract wildlife and delight local residents. Additionally, more than 900 tall herb plants, representing over 100 species,

have been planted. Using bespoke seed mixes designed specifically for urban spaces, these areas now bloom with seasonal colour and life. Local schools and volunteers have been actively involved, fostering a sense of community ownership and environmental stewardship.

Beyond aesthetics, the project delivers measurable benefits. Maintenance regimes have shifted to one annual cut, compared to the previous 16, leading to significant environmental and financial savings. Reduced machinery use cuts emissions, lowers costs, and creates quieter, safer green spaces for people and wildlife alike.

Supported by Greenspace Scotland and funding from the Levelling Up Parks Programme, Mega Flora exemplifies national efforts to restore urban nature. The project builds on Pictorial

Meadows' earlier successes, such as Rotherham's "River of Flowers," which revolutionized grassland maintenance while drastically cutting council costs.

The community's response has been overwhelmingly positive. Visitors liken the meadows to a painting, with one park ranger humorously telling an admirer, "We painted it yesterday; the paint's still wet." The anecdote captures the spirit of Mega Flora—transforming ordinary spaces into living works of art.

By blending innovative planting strategies with reduced maintenance schedules, Pictorial Meadows and North Lanarkshire Council are demonstrating a sustainable model for urban green space management. Mega Flora proves that transforming urban landscapes can be cost-effective, community-driven, and visually stunning—a beacon of how urban areas can thrive with thoughtful, nature-focused design.

Pictorial Meadows, is part of The Green Estate Community Interest Company and offers a range of designer meadow seed mixes and turf, alongside a professional meadow creation, management and consultation service.



[www.pictorialmeadows.co.uk](http://www.pictorialmeadows.co.uk)



# Pictorial Meadows

## Unique and Resilient Annual Meadows

Annual mixes expertly designed to deliver beauty and biodiversity

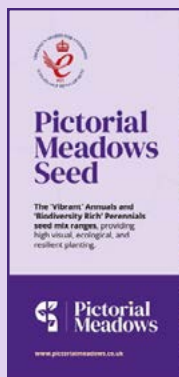
Classic



Sundance



Aqua



### Explore our Seed Brochure

For detailed information about each seed mix, including:

- Plant lists
- Flowering details
- Recommended usage
- Shade/sun tolerance
- Installation and maintenance tips



the green estate

COMMUNITY INTEREST COMPANY

pictorialmeadows.co.uk  
0114 267 7635



# LANDSCAPE DESIGN IS GREEN-TECH HELPS GRANDMOTHER JANET WILLONER EDGE CLOSER TO HER GOAL OF GROWING 5,000 TREES!



Green-tech is proud to share an inspiring update on Janet Willoner's progress. Back in 2019, motivated by her grandchildren's passion for combating climate change, Janet embarked on an ambitious mission to grow 5,000 trees from seed by the time she turns 85 - a remarkable achievement that Green-tech is delighted to support.

As 2024 draws to a close, Janet has grown an additional 800 saplings, bringing her total to an incredible 3,500 trees raised since she began this journey. Many of these saplings have been planted at Skipbridge and Bank Woods in Summerbridge, part of the beautiful Nidderdale area. These new trees will enhance the local landscape, support biodiversity, and contribute to the Northern Forest project.

Janet continues to prepare for the coming year with her characteristic determination. She has already collected and stratified seeds, ensuring they will germinate successfully when spring arrives. With the finish line in sight, she remains optimistic about achieving her target of 5,000 trees.

Janet expressed her gratitude, saying, "I'm thrilled to see the progress we've made this year. Knowing these trees will stand for generations to help combat climate change and increase biodiversity is immensely rewarding. I couldn't have done it without Green-tech's support. Their sponsorship has provided me with the compost, grit, and fertiliser I need to grow healthy saplings without worrying about funding. I'm thankful they agreed to sponsor me

again for another productive year." Green-tech's Marketing Director Kate Humes expressed her admiration for Janet's ongoing efforts: "Janet is an inspiration. Her dedication and hard work remind us of the power of individual action to help mitigate climate change. We're delighted to help and look forward to supporting her as she works towards her 5,000-tree goal."

Looking ahead to 2025, Green-tech is proud to support initiatives like Janet's that align with its mission of promoting sustainability and creating a greener future for all. It will continue its commitment to Janet's project, ensuring she has the necessary resources to nurture her next batch of saplings.

[www.green-tech.co.uk](http://www.green-tech.co.uk)



## SMALL WASTE WATER AND SEWAGE LIFTING STATIONS FOR ADDITIONAL BUILDINGS

Additional buildings, such as garden rooms, home offices or extra accommodation, generally need the essentials including electricity and water for them to be of use and value. Without gravity drainage for sinks, showers or toilet waste a reliable pumping system will be required.

This is where the independent pump experts at Pump Technology Ltd can really help, by advising exactly what is best for a particular site and application.

For example, the Jung Pumpen Compli waste water and sewage lifting station (the choice of specification by leading public health consultants) represents the industry's benchmark, automatic pumping choice, in this sector.

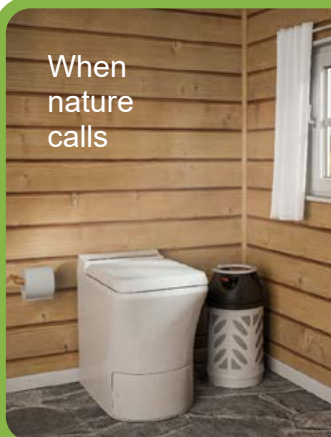
The Compli uses a PE collecting tank with a Jung Pumpen pump mounted on it via a steel interface plate. The system features numerous benefits, such as a ridged float arm, free flow impellers, mechanical seals and a rugged non-return valve.

This lifting station can either be floor mount or installed in a sump. It will also operate submerged in areas prone to flooding.



**Pump Technology Ltd**  
 0118 9821 555  
[www.pumptechnology.co.uk](http://www.pumptechnology.co.uk)  
[www.jung-pumps.co.uk](http://www.jung-pumps.co.uk)

When nature calls



**Cinderella®**  
 Incineration Toilets

0118 9821 555

- Ideal for static sites such as: - Garden rooms, huts or 'glamping'.
- And mobile situations such as: - Canal and house boats, vehicles or mobile containers. LPG gas (Propane) or electric versions available.

[www.cinderellauk.com](http://www.cinderellauk.com)



## Growing Skills in the Land-based & Environment Sector

**Lantra is an independent, awarding and accreditation body which exists to help the land-based and environment industries meet their skills needs.**

We develop and certify specialist training and qualifications for a range of industries, including landscaping and horticulture.

Ensure that your business has the skills it needs for today, tomorrow, and into the future now by visiting our website and see what training and qualifications we have on offer.



[www.lantra.co.uk](http://www.lantra.co.uk)



Lantra, Lantra House, Stoneleigh Park, Coventry, CV8 2LG  
 T 02476 696996 E [awards@lantra.co.uk](mailto:awards@lantra.co.uk)



# ROOTED IN QUALITY, CELL-GROWN AND 100% PEAT-FREE RYMER TREES AND HEDGING



Established in 2021, Rymer Trees and Hedging has distinguished itself as an innovative tree nursery focusing on cell-grown, peat-free sustainable tree cultivation. Specialising in one- and two-year-old UK native hedging and woodland species, the nursery supplies to multiple sectors - from large grant-aided schemes to smaller scale landscape design projects.

Led by a dynamic board of directors boasting extensive experience across arboriculture, farming, landscape design and horticulture, Rymer Trees and Hedging is backed by a passionate and dedicated on-site team led by Director and Nursery Manager Harry Hoblyn - 2023 alumni of the renowned Pro Landscaper 30 under 30 award.

“Our emphasis is to build innovation within the peat-free sector” says Harry. “We are dedicated to producing high quality trees from seed, with excellent establishment rates whilst minimising our

environmental footprint”. Reports from clients of 95% establishment rates confirm the teams long-held view that cell-grown offers a superior option when planting for our changing climate and somewhat unpredictable seasons. Their focus on minimising the nursery’s environmental footprint is reflected in every aspect of operations - from rainwater harvesting and maximising waste reduction efforts to biodegradable and recyclable products used for packaging.

Alongside their offering of high-quality, robust ready-to-plant whips, Rymer Trees and Hedging is pleased to be a premier UK stockist of Defender+ tree and shrub shelters. “Defender+ are our chosen shelter brand for a multitude of reasons” says Lizzie Smith - Sales and Marketing Manager. “Key features include inbuilt stake pockets - negating the need for plastic ties whilst aiding ease of installation and monitoring, a life span of 5-7 years, after which the shelter can be

recycled, and it’s flat pack design, allowing ease of transportation.” Defender+ ticks the boxes for the nursery’s environmental commitments - but the standout fact is the reduction in shipping volumes from the flat-pack design. When compared like for like, the volume of one pallet of Defender+ 1.2m shelters equates to a three-pallet delivery of round guards - resulting in a huge reduction in shipping and therefore carbon footprint.

As the nursery expands its offering into protection and planting accessories, the 2024-2025 harvest is well underway, with the team offering a comprehensive, personalised service to their valued clients - new and returning.



[www.rymertrees.co.uk](http://www.rymertrees.co.uk)



# Rymer Trees and Hedging

Cell-Grown & 100% Peat-Free

Extended planting window

100% Peat-Free

Excellent Establishment Rates

Reduced Transplant Shock

Plant Healthy Certified

UKISG Assured by The Woodland Trust

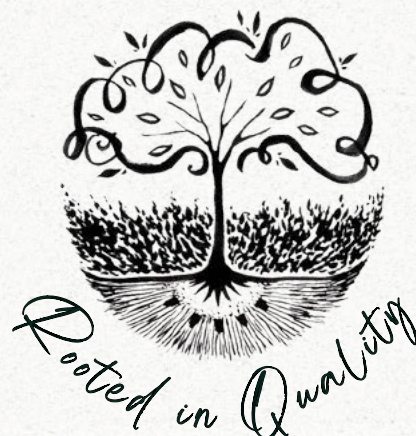
FRM Registered

Premier UK Defender+ Shelter Stockist

Grown From Seed - Fully Traceable Provenance



[www.rymertrees.co.uk](http://www.rymertrees.co.uk) - 07703 857 123  
[trees@rymertrees.co.uk](mailto:trees@rymertrees.co.uk)



Find Us on Social Media





# PREPARING PONDS AND LAKES FOR AUTUMN: THE IMPORTANCE OF AERATION



As the summer heat dissipates and autumn arrives, ponds and lakes go through subtle but quite significant changes. While natural and cyclical, these changes can profoundly impact your water and, if untreated, cause potential disturbances to its ecosystem.

For owners of lakes and ponds, now is the time to take proactive, preventative measures to maintain (or, indeed, improve) water quality.

The first thing you need to consider is thermal stratification - a natural process that occurs during warm weather. As the sun heats the surface of the water body, cooler water, which is more dense, settles and warm water rises, creating discrete layers.

As temperatures drop in autumn, the stratification effect weakens and layers mix again via a process called turnover.

When oxygen-depleted water mixes with oxygen-rich water, overall water oxygen levels can suddenly

fall, resulting in the death of fish and other aquatic organisms. In these conditions, phosphorus, ammonium, and some metals are also released from sediment, which will increase algae production.

Resulting algal blooms don't just reduce water clarity, they also absorb available oxygen and prevent plant life from growing, causing the death of wildlife and a more pressing biomass issue.

So, what steps can pond and lake owners take to prevent these problems? Aeration - the process of maintaining or increasing oxygen levels in water.

Aeration systems work by circulating water, breaking up thermal stratification, and ensuring oxygen is evenly distributed. This prevents sudden oxygen depletion, which keeps plants and aquatic life healthy, while also preventing other issues like sludge build-up and bad odours.

Oxygen, moreover, is used by ponds and lakes to remove excess nutrients

through aerobic bacteria, which consume the nitrogen, phosphorus, and nutrients that algae would otherwise thrive on.

If you need specialist guidance, lake and pond management experts Reesink Hydro-Scapes provide technical advice, symptoms check support, and, through its extensive dealer network, distribute Otterbine aerators.

For over 70 years, Otterbine have pioneered industry-leading aeration systems. Reliable and efficient, their technology promotes water circulation and oxygenation - both critical if you want to protect the health of your water bodies.

By investing in a new system, or upgrading your old one, you can enter the autumn season with confidence. To learn more about Otterbine and how aeration can improve the quality of your water, give Reesink Hydro-Scapes a call today on 01480 226948.

[www.otterbine.com](http://www.otterbine.com)





Effective water solutions  
for all landscapes

# BRING THE NIGHT TO LIFE WITH COLOUR



## Bring your fountain to life at night with Otterbine's Lighting Systems.

Introducing MIDI-RGBW Lights for Otterbine's Fountain Glo™. These 9-watt light sets offer a cost-effective way to add rich colour to your fountains. Pairs perfectly with Otterbine's 1-5hp aerating fountains to give lavish, vibrant light to accentuate any pattern with a variety of coloured displays and sequences. Takes your venue from day to night in style.



[reesink-hydroscares.co.uk](http://reesink-hydroscares.co.uk)



# GREEN-TECH'S CONTRIBUTES TO GRANTHAM RELIEF ROAD

Grantham Relief Road is a pivotal infrastructure project led by Lincolnshire County Council in collaboration with South Kesteven District Council, Homes England, and the Greater Lincolnshire LEP.

With aims to improve the town's infrastructure and boost its growth, Dobson's, a family-run landscape contractor is entrusted with working alongside the Main Contractor, Galliford Try, and Green-tech to deliver the substantial landscaping package which is due for completion in 2025.

The large-scale infrastructure scheme is a new 3km distribution road and is a crucial component for the development of the town of Grantham. The route provides direct access to an employment site on the A1 which is forecast to generate over 370 jobs in the area. Opening up additional employment land along the new route will further increase the ability of the area to attract new business investment, offering employment sites with good transport links and a growing population that can provide local labour for new and growing companies.

**The project aims and benefits are to:**

- Reduce congestion, disruption, and traffic delays.
- Create a safer, more attractive and accessible town centre.
- Provide opportunities for growth.
- Reduce carbon emissions and noise pollution.

Green-tech is a leading landscape supplier renowned for its

commitment to sustainability and innovation. With three decades of experience and a comprehensive range of products, Green-tech empowers contractors and developers to create environmentally responsible landscapes that thrive for generations to come. Renowned as the largest supplier in the UK of tree planting material and sundries, Green-tech's products are trusted by professionals across the UK for their quality, reliability, and biodegradable options.

The landscaping project includes 247,000m<sup>2</sup> hydroseeding, planting of 17,000 woodland and shrub mix, 26,000 Native Hedge mix, and the installation of 4500 Ornamental Plants. Dobson's is providing 24 months of aftercare maintenance which includes grass cutting, weed control, and replacement planting. Green-tech supplied all sundries including mulch mats, compost, mulch, and tree guards for this project which will aid plant survival, promote healthy growth and optimal soil health, along with enhanced moisture retention - all vital for the success of the landscaping project.

Lauren Dobson, Commercial Director at Dobson's, praised Green-tech's seamless collaboration and high-quality service, highlighting their pivotal role in upholding Dobson's reputation for flexibility and quality workmanship. "Our companies have a great history



together and these relationships have been nurtured and passed down through generations. Green-tech offers a service that is hard to beat. They work seamlessly with us on projects such as Grantham Relief Road where project delays occur. They help us offer our clients the flexibility and quality workmanship that our reputation has been built on."

The Grantham Relief Road landscaping project stands as a testament to the synergistic partnership between Dobson's and Green-tech. By harnessing innovative landscaping solutions and sustainable practices, they have transformed the town's infrastructure and paved the way for a greener, more prosperous future. Green-tech's unwavering commitment to excellence and sustainability continues to set the benchmark for landscape suppliers across the UK, reaffirming their position as industry leaders in sustainable landscaping solutions.

[www.green-tech.co.uk](http://www.green-tech.co.uk)



**Sustainable, Organic, Biodiversity Rich Services**  
**Creating, Maintaining, Landscaping Legacies**

**Proudly independent, we are proud to think outside the box - working in harmony with our clients and the environment**



**Landscape Maintenance**

**Urban Horticulture Specialists**

**Ecology, Biodiversity & BNG**

**Design & Installation**

**Arboricultural Management**

**Irrigation Management**

**T: 020 8777 8717**

**E: [info@qslimited.com](mailto:info@qslimited.com)**

**W: [www.qslimited.com](http://www.qslimited.com)**



# REESINK AND TORO COMBINED FOR THE QUICK WINTER WIN



Getting ready for winter means being prepared and Reesink and Toro make that easy when it comes to machinery maintenance

There aren't many quick wins in life, but Reesink and Toro certainly provide one when it comes to winter machinery maintenance.

Getting ready for winter means being prepared. The work is tougher and harder for machines, and that means parts are more likely to wear out, bend, crack or damage more easily and with more frequency. But there's no need to experience a delay to work or unnecessary downtime. Here's a genuine take on why.

Having the reliability of Reesink as a distributor means parts delivery within 24 hours to anywhere in the UK. That level of service reduces the amount of downtime incurred, as well as making life easier.

The reassurance of having a genuine service don't end there. It comes with a comprehensive stock reserve and local support. But significantly, customers can rely on the fact that they're getting the genuine Toro part - and that's a big distinction.

Going for the will-fit part means customers are not choosing the parts that are specifically built for the machine. Nor are they choosing the high-quality materials Toro is synonymous with to ensure maximum performance. Or indeed choosing parts that are rigorously tested to make sure they can withstand the daily stress that come with keeping a course or pitch in top condition.

Michael Hampton, Parts Manager at Reesink Turfcare says: "It's not possible to make winter machinery maintenance any easier than by choosing Reesink and Toro, so while the weather might be unpredictable something you can guarantee won't be is the quality you get from Toro and the service and support you receive from Reesink."

But the winter wins don't stop there. Getting ready is as simple as ordering MVP kits in advance to cover over 100 different maintenance issues such as rebuilding rollers, replacing

hydraulic hoses, filter kits or even overhauling cutting units. When packaged up in one handy box customers get all the required parts and save up to 20 percent on the cost of buying the parts individually. And importantly, they are on the shelf ready to use.

And finally, never underestimate the power of simply being organised by planning in winter servicing now. After all, routine checks and preventing rather than curing problems is considerably cheaper than ad-hoc repairs and thanks to Reesink peace of mind this winter is guaranteed with its ReeAssure servicing plans and the option of three types for every budget and requirement level.

---

To find a Reesink branch or local Toro dealer, visit [reesinkturfcare.co.uk](http://reesinkturfcare.co.uk) or call 01480 226800.





## We're At The Root Of Any Project

- The largest availability of hedging products
- Widest selection of species
- Trade specific discounted pricing
- Bespoke quotes for projects
- Complete plant project sourcing, any plants you need
- Dedicated, experienced trade team
- Fast, flexible delivery to suit you
- 12 month plant guarantee



01257 806101

[trade@hedgesdirect.co.uk](mailto:trade@hedgesdirect.co.uk)

[www.hedgesdirect.co.uk/trade](http://www.hedgesdirect.co.uk/trade)

 **HEDGES DIRECT**



# WICKSTEED – ENRICHING COMMUNITIES THROUGH PLAY FOR OVER A CENTURY



Creating spaces where children can explore, grow, and thrive is at the heart of what we do at Wicksteed. Since 1918, we've been designing and manufacturing outdoor playgrounds that inspire fun, encourage development, and bring communities together. Whether in a local park, school, housing development, or community hub, our play areas are more than just equipment—they're spaces where connections are made, skills are developed, and lasting memories are created.

Playgrounds offer more than an outlet for energy. They foster

creativity, build physical and social skills, and serve as cherished destinations where families and friends gather. At Wicksteed, we believe that every community deserves a space where people of all ages and abilities can connect.

### Why Choose Wicksteed?

As the UK's leading Outdoor Playground, Leisure, and Fitness Manufacturer, Wicksteed brings over 100 years of expertise to every project. We offer tailored solutions that cater to the unique needs of every client, from councils and housing developers to schools and community organisations.

Our partnership with leading international brands such as Berliner and Spielart allows us to provide a wide-ranging portfolio of innovative, high-quality outdoor play equipment. From off-the-shelf solutions to bespoke designs, our equipment combines creativity, durability, and inclusivity to ensure everyone can enjoy the joy of play.

### A UK Manufacturer with a Distinct Advantage

One of our key strengths is our UK base, which enables us to deliver exceptional maintenance and spares services. With our headquarters in Kettering, we stock a comprehensive





range of spares to ensure fast turnarounds, minimising downtime for play areas. This ensures that the joy of play remains uninterrupted.

### Safety at the Core of Everything We Do

Safety is a top priority at Wicksteed. Every product is rigorously tested to meet British and European Safety Standards. From design to installation and maintenance, our skilled teams are fully trained to deliver playgrounds that meet the highest safety standards while still sparking adventure and excitement.

### Creating Inclusive and Inspiring Play Spaces

We understand the importance of inclusivity in modern play area design. At Wicksteed, we create spaces where children of all abilities can actively participate and connect. From inclusive equipment to thoughtfully designed layouts, we ensure our play areas foster understanding, social integration, and accessibility.

Our **Multiplay units**, for example, cater to a wide range of ages and abilities. These dynamic structures encourage toddlers, children, and teenagers to engage, explore, and enjoy, making them a favourite in communities nationwide.

### Bespoke Play Areas Tailored to You

No two communities are alike, and neither are the play areas we create. Our bespoke design service ensures that every playground reflects the character, needs, and aspirations of its community. Whether you envision timber structures for a natural aesthetic, vibrant colours for a schoolyard, or imaginative themes, we'll bring your vision to life.

**From concept to completion, Wicksteed is with you every step of the way.**





# EXCITING NEWS: THE LAUNCH OF WICKSTEED'S 2025 PRODUCT BOOK

As we look to the future, we're thrilled to announce the launch of our brand-new product book in early 2025. This eagerly anticipated release will showcase our latest innovations, featuring new and exciting playground equipment as well as collaborations with fresh suppliers.

The product book highlights the breadth of what Wicksteed offers, from **toddler playgrounds**

and **inclusive play equipment** to **fantastic multiplay systems** that inspire imagination and adventure. It's a treasure trove of ideas for transforming outdoor spaces into vibrant destinations for play and connection.

Want to be among the first to explore our latest offerings? Register your interest today by contacting our sales team. Be inspired by the future of play with Wicksteed!



2025

## PRODUCT BROCHURE

SALES@WICKSTEED.CO.UK



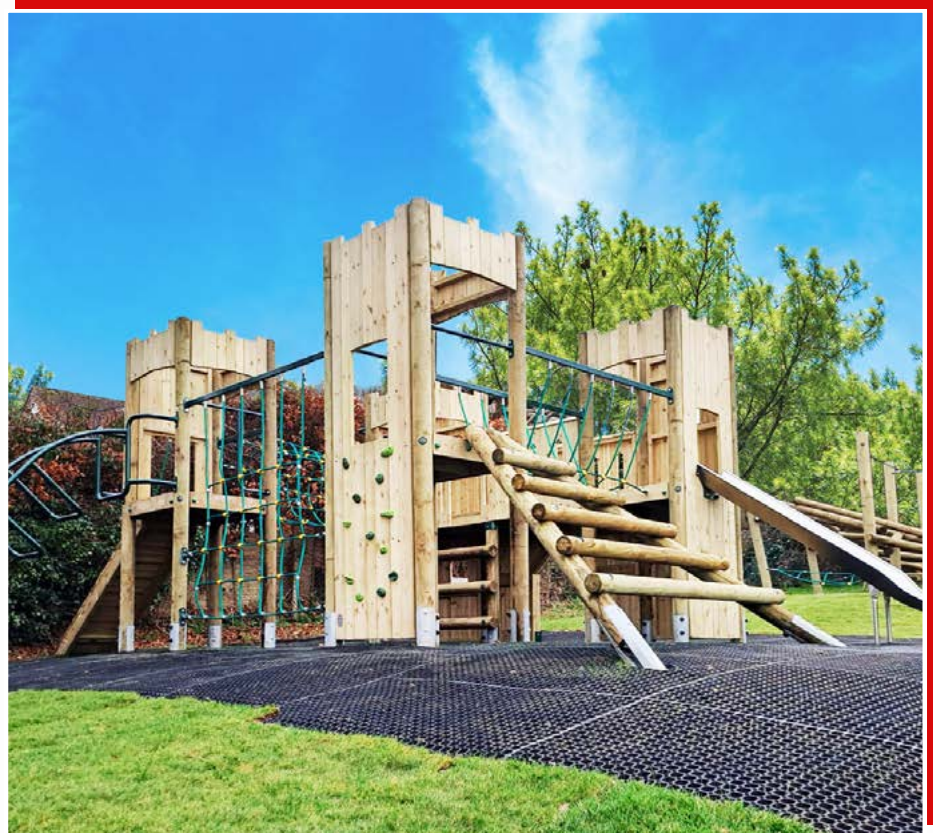
## READY TO TRANSFORM YOUR SPACE?

Don't miss the chance to create a playground that enriches your community and sparks endless joy. For a **FREE design consultation**, get in touch with our expert sales team:

01536 517028  
sales@wicksteed.co.uk  
Digby Street, Kettering,  
Northamptonshire, NN16 8YJ

Wicksteed.co.uk





## Our Services

- ◆ UK playground manufacturer since 1918
- ◆ Full maintenance & inspection service
- ◆ Free site visit & design
- ◆ Spares stocked at our UK factory
- ◆ Extensive guarantees
- ◆ Bespoke play structures

# WICKSTEED

• SINCE 1918 •

[Wicksteed.co.uk](http://Wicksteed.co.uk) 01536 517028  
[sales@wicksteed.co.uk](mailto:sales@wicksteed.co.uk)



We are the exclusive  
 UK partner to  
**Berliner  
 Seilfabrik**



We are the exclusive  
 UK partner to  
**Spielart  
 GmbH**

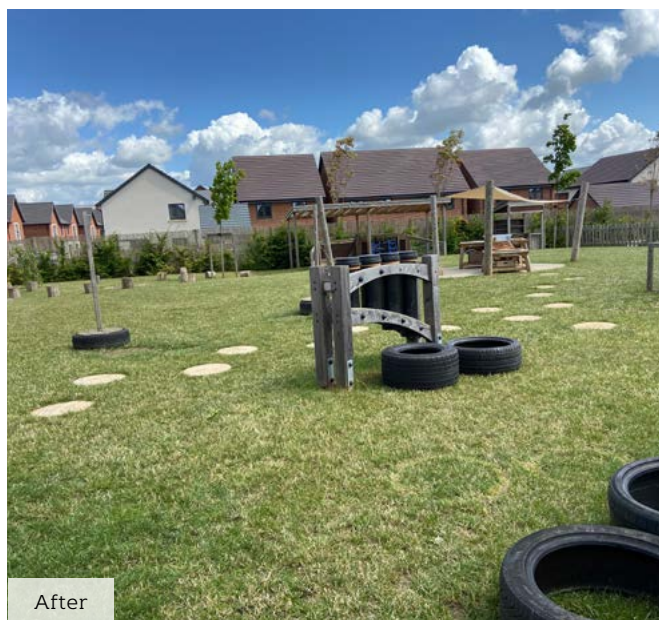




# PLAYSMART UK REVOLUTIONISING LANDSCAPING WITH HYBRID GRASS



Before



After

The quest for the perfect lawn has long been a balancing act between aesthetics, durability, sustainability, and maintenance. Traditional natural grass, while beautiful and soft underfoot, often requires significant upkeep and struggles to maintain its lush appearance under heavy use or adverse weather conditions. Artificial turf offers durability and low maintenance but can lack the natural charm and ecological benefits of real grass. Hybrid grass is a groundbreaking innovation that merges the best attributes of both natural and synthetic turf, offering a transformative solution for modern landscaping.

Our Hybrid grass system allows natural grass to grow through the synthetic fibers, creating a resilient and versatile lawn that meets the demands of contemporary landscapes. This innovative approach offers several compelling

advantages that make it an ideal choice for a variety of applications, from residential gardens to public parks and commercial spaces.

### 1. Enhanced durability

The synthetic fibers reinforce the natural grass, allowing the lawn to withstand heavy foot traffic and resist wear and tear. This makes hybrid grass particularly suitable for high-traffic areas where traditional grass might quickly become patchy and unsightly.

### 2. Visually appealing landscape

The combination of natural and synthetic elements ensures that the lawn remains green and vibrant throughout the year, regardless of weather conditions. This consistent appearance enhances the overall aesthetic of any landscape, creating inviting and attractive outdoor spaces.

### 3. Sustainability

By reducing the need for chemical treatments and excessive watering, it minimises the ecological footprint associated with traditional lawn care. No groundworks are required during the installation ensuring the existing ecosystem, remains intact, promoting biodiversity and contributes to a healthier ecosystem. Hybrid grass represents a significant advancement in landscaping technology. By combining the resilience of synthetic fibres with the natural beauty and ecological benefits of real grass, it offers a superior solution for creating durable, and visually stunning landscapes. As more homeowners, businesses, and municipalities adopt this innovative approach, the future of landscaping looks greener and more sustainable than ever.





PlaySmart UK

# FAMILIAR SITE?



PlaySmart UK



Tired of seeing your high-traffic areas turn into unsightly patches of dirt and mud? Turn problematic eyesores to lush, green spaces with Hybrid Grass – the ultimate solution for durability in high wear areas.



Hybrid grass combines the best of both worlds: the natural beauty of real grass and the resilience of synthetic fibres. This innovative blend ensures that your natural grass areas remain vibrant and robust, even under the most demanding conditions.

## WHY CHOOSE HYBRID GRASS?



### Unmatched Durability

Designed to withstand heavy foot traffic, making it perfect for play areas, golf tees, public parks, slopes and banks



### Year-Round Greenery:

Keep your landscape looking lush and green throughout the year, regardless of weather conditions.



### Eco-Friendly:

Reduce water usage and chemical treatments, contributing to a more sustainable environment. The existing Ecosystem remains intact enabling wildlife to interact with the grass and soil.



### Quick installation

No intrusive groundworks, reducing costs and retaining the existing ecosystem

## PERFECT FOR VARIOUS APPLICATIONS:



### Public Parks

Enhance the aesthetic appeal and usability of community spaces.



### Commercial Landscapes:

Impress clients and visitors with pristine, professional grounds.

Available as supply only or supply & install Contact us now on 01564 742811 or email [info@playsmartuk.co.uk](mailto:info@playsmartuk.co.uk) quoting HYBRID22 for a 10% discount on all orders place before 31st January 2025. Samples are also available



PlaySmart UK



[www.PlaySmartuk.co.uk](http://www.PlaySmartuk.co.uk)



PlaySmart UK



# REIMAGINING THE MUGA – THE ROUTE TO BETTER TEENAGE PLAY PROVISION



Public spaces have long been the backbone of community interaction. But recent studies revealed that 90% of teenage play areas are dominated by boys, leaving girls feeling unwelcome and unsafe (Parkwatch Report, 2023). With traditional facilities such as skateparks, shelters, and multi-use games areas (MUGAs) catering only to specific interests, a considerable portion of the population seems to be forgotten. Something new is needed to bridge the gap, provide a more inclusive space, and to give local authorities the tools to ensure

that community needs are met. One proposed solution is a new style of MUGA, one that aims to reimagine public spaces as vibrant hubs of inclusivity, empowerment, and community engagement. Jupiter Play and Leisure have developed a framework for this new type of MUGA, that they call KORE.

### How it works

KORE's approach lies in its adaptability and user-centered design. As a modular system, KORE grants the ability to reimagine a space over time and easily integrates

into existing environments. The cornerstone of this innovation is the KORE KONNEX consultation process, which puts the power of design into the hands of the end users.

The KORE KONNEX consultation begins with an interactive and engaging activity. Participants are given a series of tiles, each representing a different play kit or feature, alongside a blank grid. These tiles showcase a diverse range of options, including:



- **Social spaces:** park benches, chillout zones, and climbing frames to encourage relaxation and connection
- **Gaming:** cutting-edge equipment like Lappset's Fono DJ booth, Sutu ball wall, Sona dance arch, and MEMO interactive play pillars
- **Fitness:** outdoor gym setups catering to all ages and fitness levels
- **Lifestyle:** activities such as parkour and table tennis to provide variety and challenge
- **Ball games** basketball, football, hockey, and similar activities to promote physical activity and teamwork

Participants are invited to select and arrange their ideal combination of kits on the grid to design their dream play space. This hands-on approach not only empowers individuals to express their preferences but also facilitates an inclusive dialogue

about the needs and desires of the broader community. Every choice made by participants is recorded, offering valuable insights into the popularity of the different options. The result is a space for the community, designed by the community.

A key feature of this consultation process is its inclusivity. By involving a wide range of demographics—from teenage girls and boys to parents and older generations—the consultation ensures that all voices are heard. A recent session saw a group of teenage girls create a conceptual space with multiple hangout zones, an outdoor gym, and a Fono DJ booth. Their design prioritized safety, social interaction, and opportunities for self-expression, displaying how KORE can bridge the gaps of current teenage play provisions.

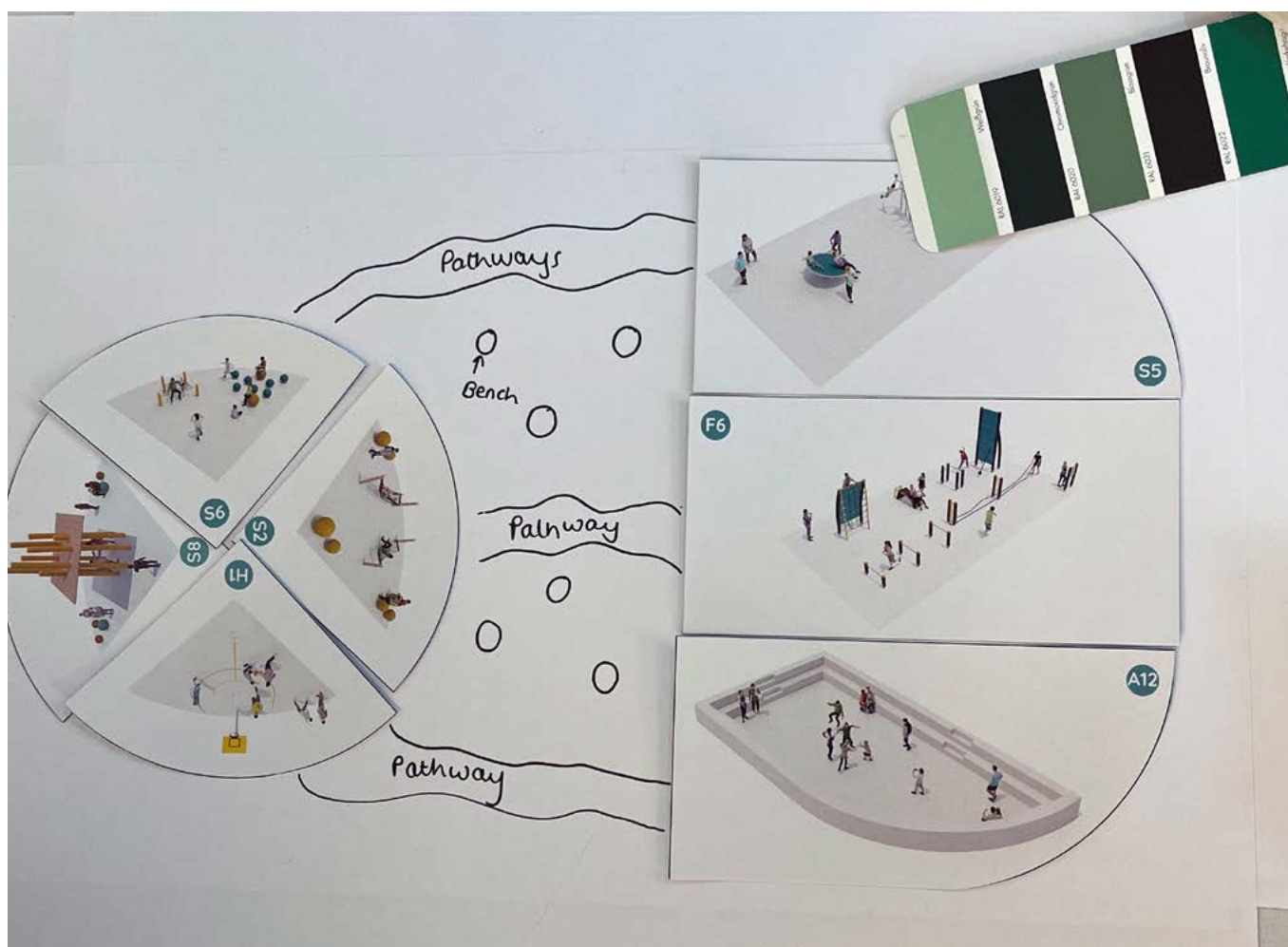
Once the consultation phase concludes, the data is collated to identify patterns and preferences. This allows the local authorities to

make informed decisions about the final design, ensuring that the space truly reflects the community's wants and needs. The modular nature of KORE further enables clients to adapt and evolve the space over time, responding to changing preferences and trends or spreading the cost over multiple years.

### Why it matters

The significance of KORE extends far beyond play equipment. By engaging local communities from the outset, KORE addresses long-standing inequalities in public space design. Traditional approaches often result in spaces that feel exclusive or unwelcoming to certain groups. KORE flips the script, ensuring that every demographic has a say in shaping their environment.

This approach has a ripple effect on community well-being. Inclusive spaces promote active lifestyles, support mental health, and strengthen community ties. When people feel a sense of ownership over their public spaces, they are







more likely to use and care for them, fostering a sense of belonging and shared responsibility.

Moreover, KORE's adaptability means that spaces can grow and change with the communities they serve. Whether it's adding new features, refreshing existing ones, or reconfiguring layouts, KORE provides a dynamic solution that evolves alongside its users.

Public spaces are more than just physical locations—they are platforms for connection, creativity, and growth. By prioritizing inclusivity and engagement, KORE is redefining what these spaces can achieve. It's not just about building playgrounds; it's about activating spaces to bring people together, empower communities, and inspire the next generation.

Discover more about how KORE is activating spaces for the better today.  
[jupiterplay.co.uk/kore/](http://jupiterplay.co.uk/kore/)





# Designing with communities: **KORE**

**KORE**, developed exclusively by Jupiter Play & Leisure, is reimagining traditional multi-use games areas and reactivating community spaces for everyone.

Involving local communities through consultation is essential to truly understanding and meeting their needs. That's why we're designing with the community, using the KORE KONNEX consultation tool.

Run a consultation today: [jupiterplay.co.uk/kore](https://jupiterplay.co.uk/kore)

-  Interactive
-  Equipped
-  Inclusive
-  Data-driven
-  Activated

# KORE





# GET IN THE ZONE TO IMPROVE PLAYGROUND DESIGN

BY ANDREW WOOD, MANAGING DIRECTOR AT  
ESP PLAY

Modern playground design is a world away from the traditions of the past - and anyone redeveloping playgrounds should be engaging with designers who understand the play needs of children.

Playgrounds in schools and housing have undergone significant transformations over the years, evolving from simple recreational areas to versatile spaces that accommodate a range of activities.

Modern school playgrounds now need to encompass various zones that enhance learning, physical development, social interaction and imaginative play.

#### **Climbing zone**

Climbing zones enhance gross motor skills, build strength and coordination and improve all-around fitness. There is also the positive impact of overcoming the challenges posed by climbing equipment. Successfully meeting a

challenge can benefit a child's self-esteem and resilience, while helping them develop their risk-taking and problem-solving skills.

Today, there is a wide variety of climbing equipment available, including climbing frames, rope courses, trim trail obstacle courses, traversing walls and play towers. Safety surfacing, such as impact-absorbing wetpour or artificial grass, can help reduce the chance of injury when laid under climbing equipment.



### Imaginative play zone

It is important to encourage creativity from a very young age and one of the best ways to do this in the playground is to create a zone for imaginative play. This zone can include playhouses, pirate ships, wooden trains, tunnels, 'castle' play towers and much more. These are ideal for stimulating role play and firing the imagination.

### Messy play zone

A highly popular element of many nurseries and infant school playgrounds, messy play areas are designed to stimulate children's creativity and sensory exploration while offering endless hours of fun. They are also great for getting children to play together.

These zones can include sand pits, water play tables, mud kitchens and art stations. Surfaces like resin bound gravel or wetpour provide a forgiving base for these activities, making it easy to clean up afterwards.

### Outdoor classroom zone

Taking learning beyond its traditional setting, an outdoor classroom provides a dynamic environment for hands-on education. This can be created by installing features like class-sized octagonal shelters, seating areas, outdoor desks and whiteboards.

Today, there is a growing range of curriculum-focused equipment for outdoor classroom use, including a large selection of interchangeable learning boards. Subject-specific items are available for maths, English, science, geography, history, art, design and technology, music, drama, dance and languages. There are also resources for cross-curricular activities.

### Quiet nature zone

A tranquil and natural environment offers a calming retreat for students. They are ideal places for small groups to sit and chat together and can be a safe haven for children with SEND. These areas can incorporate elements such as gardens, flower beds, trees and seating areas, or in schools with no natural space, they can be created using artificial grass, fences, planters and trellises.

In addition, these spaces can also be used for teaching science. Installing butterfly boxes, bug houses and bird feeders encourages wildlife into the spaces, while there is a variety of science equipment that can be installed, including exploration tables, discovery planters and growing boards, to learn about plant growth and soil life.

### Sports zone

A dedicated sports zone encourages physical activity and fosters teamwork among pupils. With active



participation, this can be beneficial to both the physical and mental health of pupils. A well-equipped sports zone can also double up as both a play area and an outdoor resource for teaching PE.

Sports courts and pitches can be affordably created through the installation of playground markings, and these can be embellished with basketball hoops, football goals and various other equipment. When it comes to surfacing, artificial grass or recycled rubber wetpour surfacing are ideal as they provide a safe and durable surface for running, jumping and playing sports.

Modern school playgrounds have transformed into multi-purpose spaces that go beyond traditional play areas. By designing and incorporating different zones, schools can provide pupils with opportunities for physical activity, imaginative play, nature exploration and interactive learning.

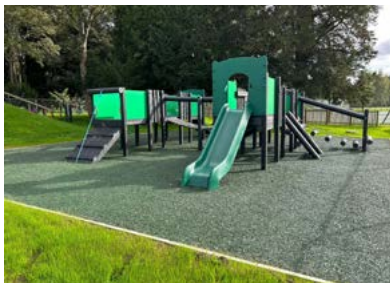
For information on the design, build and equipment you need for a playground see [www.esplaygrounds.co.uk](http://www.esplaygrounds.co.uk) or [www.esplay.co.uk](http://www.esplay.co.uk)





**MARKET LEADERS IN RECYCLED PLASTIC PLAY EQUIPMENT**

At PlayQuest, we recognise that the choices we make regarding the materials we use in our play equipment will have an impact on everyday life.



We use Recycled Plastic produced from the waste collected by domestic recycling schemes - which includes plastic bottles and food containers.

As well as being better for the environment, the Recycled Plastic material does not rot or splinter, will last for decades and is virtually maintenance free.

We can also replace individual old, rotten timbers with new Recycled Plastic posts, saving the cost of replacing old play equipment with brand new play equipment.

Our Recycled Plastic play equipment comes with a 30-YEAR guarantee, with a life-expectancy of 50 years + in the ground!

For more information please visit: [playquestadventureplay.co.uk](http://playquestadventureplay.co.uk) or call our Head Office: 01745 561117.



Ask us about our extensive Pole Climber range!



Bespoke Design, Physical Play Equipment, Outdoor Learning, UK Manufactured



[playspaces.co.uk](http://playspaces.co.uk)

Find us on: T: 01622 844 238 E: [info@playspaces.co.uk](mailto:info@playspaces.co.uk)



**ECO RUBBER CHIPPINGS**

Colour Variations



**Safe, long lasting, trouble free, colourful ground cover. Ideal for play areas, landscaping & animal settings.**

**01977 529 570 | [info@eco-chippings.co.uk](mailto:info@eco-chippings.co.uk)**

**[eco-chippings.co.uk](http://eco-chippings.co.uk)**



# Revolutionise your business with our robotic solutions



**Time Saving**



**Professional Support**



**All Weather**



**Maintenance Service**



**Quality Cut**



**Trial Available**



**Quiet**



**App Managed**



**Sustainable**



# GET CONTROL WITH SMART RESOURCE SCHEDULING



Organising a team and putting them to work comes with challenges, especially related to compliance, asset maintenance, and ensuring everyone has what they need to get the job done.

For team members who are tech-averse, adopting digital software can feel like a leap. But the right intuitive software makes that leap effortless and worthwhile.

Hundreds of companies like Tony Benger, ATV, Shines Environmental, Tilhill Harvesting, and more have found Re-flow Field Management easy to use. Connecting office to site enables teams to log their time, capture equipment usage, provide photo evidence, and submit data instantly.

Smart resource scheduling not only simplifies workflows but transforms how you manage.

## Plan, Assign, Execute

- Every asset, from fencing to

chippers, vehicles, staff, and equipment, is recorded, has a last known location, and can be assigned a unique QR code.

- Reactive scheduling for real-time changes ensures that staff, tools, and equipment notify their location, report defects, and adjust schedules live through automation, keeping managers informed.

The magic of smart resource scheduling lies in its simple drag-and-drop interface, coupled with a live map view showing the location of your staff, their qualifications and skills, and which equipment is in service and available.

## Your Needs, Your Forms, Your Way

Re-flow is an intuitive, flexible, and powerful solution. Use existing forms popular with landscapers across the UK or configure them to your specific requirements. From daily work records, timesheets, herbicide use, risk assessments, and

inspections, Re-flow's smart forms adapt to your needs. One form can trigger multiple actions through automation, ensuring seamless communication and updates.

## The Re-flow App

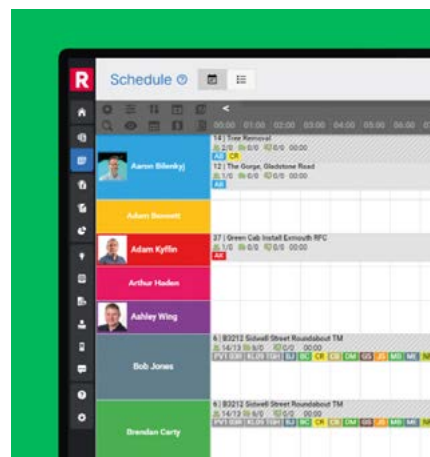
Empower your team to start the day knowing exactly what they need to do with an easy-to-use app containing:

- Job packs with start time, location, tasks, designs, attached documents, and forms
- A customisable information library with equipment manuals, general information, and company policies

## The Dashboard for Your Office Team

Gain complete operational oversight. Know where your team are, what they're doing, and what they've accomplished.

- Update the vehicle/equipment database, create jobs, and manage resources
- Send notifications and messages
- Review reports and forms



Find out more about Re-flow:  
[re-flow.co.uk/landscaping](http://re-flow.co.uk/landscaping)  
 and try it for free.



**DO YOU KNOW  
WHERE YOUR  
OPERATIVES  
ARE TODAY?**



**RE-FLOW DOES**

**Re-flow**<sup>®</sup>  
Field Management



Intuitive, flexible, powerful –  
the only field operations software  
you will ever need.

Call 01392 574002  
Visit [www.re-flow.co.uk](http://www.re-flow.co.uk)



LEARN MORE



# DISCOVER THE 'ASPEN DIFFERENCE' WITH A STOP BY STAND 423 AT BTME 2025



**With sustainability high on the agenda for many golf courses around the country, there has never been a better time to review all aspects of the greenkeeping operation - including the method of power. Aspen Fuel is an alkylate petrol, 99% cleaner than traditional pump unleaded and offers a viable alternative for serviceable petrol-engined hand tools and equipment. Visitors to BTME 2025 can find out more as Aspen make their debut on stand 423.**

Aspen Alkylate petrol offers numerous benefits to professional and commercial customers, making it a popular choice for those working in construction, landscaping and arboriculture, and already making a name for itself with golf courses around the world. Virtually free from sulphur, benzene and solvents, it reduces emissions and all-but eliminates odours - freeing operators from the headaches and other health implications this can cause.

Not only that, Aspen is also ethanol-free, protecting your machines during use and in storage, and extending engine life and reliability.

A growing list of UK courses have already made the switch to Aspen, including Newark Golf Club. After encountering availability issues with pump fuel during COVID, the team trialled Aspen 2 and Aspen 4 in their machinery and have not looked back since. "It's not until you incorporate it into the day to day operations that you really begin to appreciate the improvements Aspen delivers for both the operators and the equipment. The biggest benefit for me is its shelf-life, which has seen us get equipment out of the shed that has been dormant for a year and starts again with no trouble at all" explains Course Manager Alex Clarricoates.

"We use roughly 400 litres of the 4-stroke Aspen, and 200 litres of the 2-stroke each year, both delivered in 200 litre barrels and stored exactly

where we need it." He continues, "Another benefit we've found is the Aspen 2 being pre-mixed which has eliminated issues we've experienced in the past where incorrect fuel to oil ratios have resulted in faults with some of our 2-stroke engines."

Those wishing to trail Aspen alkylate petrol in their own businesses can now do so, risk-free, with Aspen's money-back guarantee. If you don't 'Experience the Difference' by the end of your trial period, Aspen will refund you the cost difference compared to what you would have spent on pump fuel. More details on this, and the full Aspen range, can be found by speaking to the technical team who will be available on stand 423 across the three-day show.



[www.aspenfuel.co.uk](http://www.aspenfuel.co.uk)



# LANDSCAPE & URBAN DESIGN



Providing the UK's major landscaping and urban design specifiers with a comprehensive look at the latest in landscape design and management, design innovations, garden design, the built and natural environment, public space, green space, open space and environmental sustainability.

## FREE DIGITAL MAGAZINE SUBSCRIPTION

### Subscription enquiries:

Call - 01304 806039  
info@mhmagazine.co.uk

### Advertising enquiries:

Lee Martin - 01227 936974  
lee@landud.co.uk

### Editorial submissions or enquiries:

Antony Holter - 01304 806039  
antony@mhmagazine.co.uk



**SUBSCRIBE TODAY!**





city road, islington

01254 685 185

sales@woodscape.co.uk

woodscape.co.uk

woodscapegroup

woodscapeco

woodscape\_street\_furniture

 **Woodscape.**  
Bespoke Street Furniture