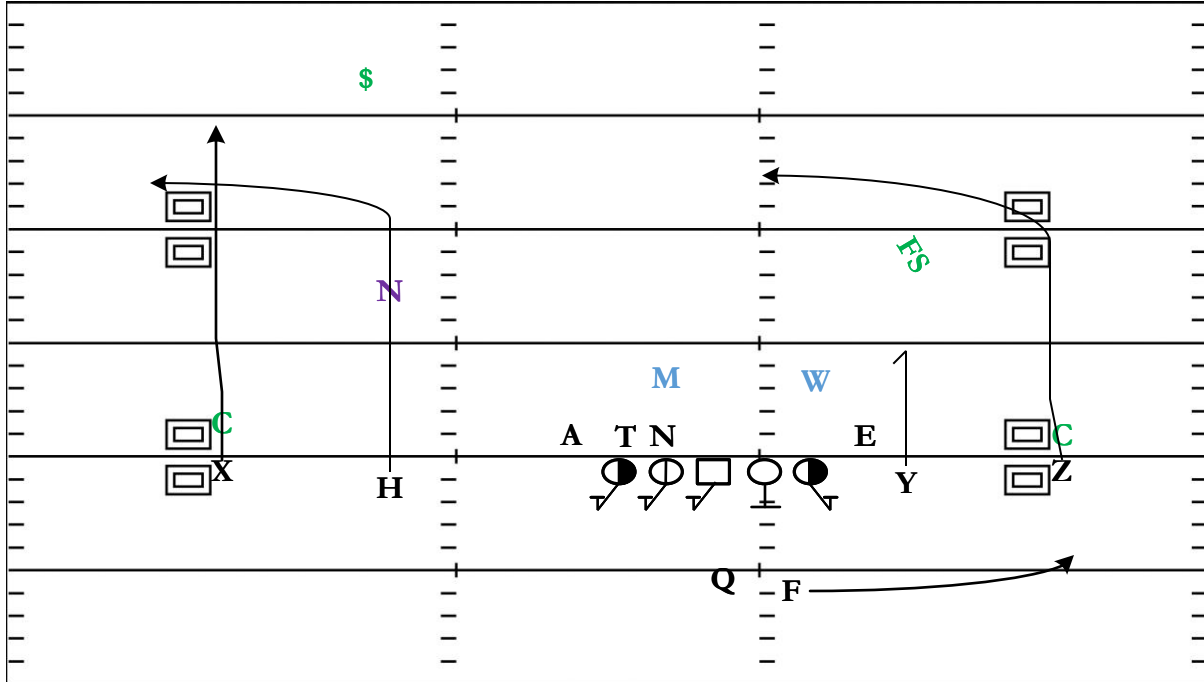


2x2 Open: Sail

QTR	TIME	D & D	YD LINE	HASH	SCORE
3rd	4:12	3 & 13	22	RM	27 - 21



STRATEGY: Air Raid Staple that gives the USC offense the ability to attack the field with a Deep Out (Sail) or work back to the Boundary w/ a High-Low Read.

QB READS & PROGRESSION: Deep Out – High/Low Glance Hitch - Swing

X	MOR Vertical	LT	Slide Protect C-Gap
H	Deep Out	LG	Slide Protect B-Gap
Y	Short Hitch	C	Slide Protect A-Gap
Z	Glance Break In @ 10-12 Yards	RG	Dual Set If Will Drops help the Slide
F	Swing	RT	Man Protect Defensive End