

Commercial | Domestic | Public Sector

REFURB & RESTORE

**WILLIS AND STONE:
KEY CONSIDERATIONS
FOR DESIGNING A
SOCIABLE KITCHEN**

**JANUARY FURNITURE SHOW 2025:
THE ESSENTIAL EVENT FOR
FURNITURE PROFESSIONALS**

**ST LEONARDS CHURCH
COMMUNITY CONNECTION.**



**FUTUREBUILD 2025: Driving
sustainability in housebuilding
and retrofit.**



WOODBURNING STOVES

Suppliers of top quality, cast iron & steel wood burning & multi fuel stoves for over 30 years.

All our Stoves comply with Eco Design 2022 emissions and efficiency requirements for clean burning (BS/EN13240)

BUCKINGHAM II 5.1KW

£299.00 exc.VAT £358.80 inc.VAT

A

VICTORIA II 5.1KW

£399.00 exc.VAT £478.80 inc.VAT

A

A+

£289.00 exc.VAT £346.80 inc.VAT

BARREL III 5kW

A

£269.00 exc.VAT £322.80 inc.VAT

CARLTON III 4.2kW

A

£589.00 exc.VAT £706.80 inc.VAT

REGAL IV 7.9kW

A

£429.00 exc.VAT £514.80 inc.VAT

BLAKENEY 5.5kW

A+

£599.00 exc.VAT £718.80 inc.VAT

DORCHESTER 4.9kW

STAINLESS STEEL 1200W ASH VACUUM CLEANER

£65.99 inc.VAT

- 12 Litre capacity
- Built in 1200W motor
- Compact and easy to use

A

£779.00 exc.VAT £934.80 inc.VAT

PEMBROKE II 11.9kW

A

£399.00 exc.VAT £478.80 inc.VAT

WENTWORTH II 5kW

A+

£469.00 exc.VAT £562.80 inc.VAT

GLOUCESTER 5kW

BIG CHOICE OF BRITISH MADE FLUES

LOG SPLITTERS FROM ONLY £298.80 INC VAT



SEE THE RANGE ONLINE OR IN OUR 64 STORES

IN-STORE
SUPERSTORES NATIONWIDE

TELESALES
0115 956 5555

ONLINE
machinemart.co.uk

Refurb & Restore

Our Team

Editor-in-Chief

Antony Holter
T: 01304 806039
E: editor@mhmagazine.co.uk

Editorial Manager

Claire Morgan
T: 01304 806039
E: claire@refurbandrestore.co.uk

Sales Director

Tom Hibbert
T: 01843307191
E: tom@refurbandrestore.co.uk

Studio Designer

Willow Goldfinch
T: 01304 806039
E: willow@mhmagazine.co.uk

Business Manager

Josh Holmes
T: 01304 806039
E: josh@mhmagazine.co.uk

Publishing Director

Martin Holmes
T: 01304 806039
E: martin@mhmagazine.co.uk

Accounts

Lauren Marchant
T: 01304 806039
E: lauren@mhmagazine.co.uk



MH Media Global Ltd
18/20 Newington Road
Ramsgate, Kent
CT12 6EE

Cover Image Courtesy of
Willis and Stone

Every effort is made to ensure the accuracy and reliability of material published in Refurbishment & Restore however, the publishers accept no responsibility for the claims or opinions made by advertisers, manufacturers or contributors. No part of this publication may be reproduced or transmitted in any form or by any means, mechanical, electronic (including photocopying) or stored in any information retrieval system without the prior consent of the publisher.

CONTENTS

Highlights

4-5 **Key considerations for designing a sociable kitchen**

Willis and Stone

14-15 **Bradford College**

Officially Opens STEM Building After
£6.9m Refurb

18-19 **Tilleusl house extension**

30-31 **St Leonards church community connection.**

John Puttick associates

34-35 **Maison Chevalier**

A Thoughtful Rehabilitation Embracing
Historical Essence

38 **Radiator Outlet: Your project's best-kept secret**

42-44 **Winter-Ready Homes**

A guide to selecting the best radiator for
any space.

50-51 **Gentleman Store**

By ORA

56-57 **Hyperion tiles new Guide**

How to transform your home with floor
tiles.

60-61 **January Furniture Show 2025**

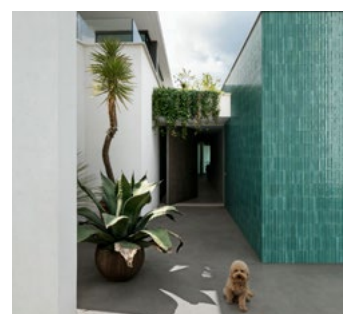
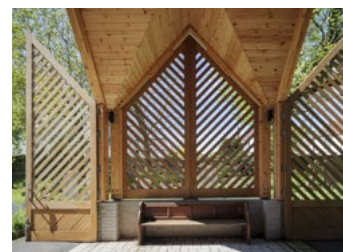
The Essential Event for Furniture
Professionals

70-71 **FUTUREBUILD 2025:**

Driving sustainability in housebuilding and
retrofit.

78-79 **Croggiolo Lume**

MARAZZI



KEY CONSIDERATIONS FOR DESIGNING A SOCIABLE KITCHEN:

Expert Insights from Willis & Stone



from cooking, appliance and conversations all spread easily across the space. A practical solution is to incorporate sound-absorbing materials like rugs, curtains and soft furnishings, which help reduce noise and create a more comfortable environment.

2. Island or Peninsula?

Whilst the kitchen island has gained status as the ultimate gathering spot and social anchor in many modern kitchens, don't forget to consider other options too. The humble peninsula can also offer ample seating along one side, allowing guests to interact with the cook while facing the kitchen. A peninsula can also be a good way to define work zones, making it easier to separate cooking activities from socialising while still being connected to guests.

The choice often depends on the available space, as islands require ample floor space and sufficient clearance on all sides to function effectively. If space does allow, islands offer great social benefits by allowing access from all sides, making it easier for people to gather and interact from different angles.

The kitchen is no longer just a place to cook, as the central hub of the home, it's where we gather, share and connect with family and friends. Whether it's for casual family meals or hosting over the festive season, creating a sociable kitchen requires thoughtful planning and design. Molly Chandler, kitchen designer at Willis & Stone shares the top factors to consider when crafting a kitchen that encourages connection and interaction.

1. Choosing the right Layout

When creating a sociable kitchen an open-plan layout is often the preferred choice. Open-plan spaces offer numerous advantages, making them ideal for households with a social lifestyle, where family

members can interact effortlessly across the kitchen, dining and living areas. This layout is also great for entertaining guests, as hosts can prepare food while still engaging with friends and family in the adjoining areas. An open plan arrangement creates a sense of spaciousness, allowing the natural light to flow throughout the entire area.

Whilst an open-plan layout is ideal for socialising, there are a few challenges to consider and plan for. For example, cooking odours will spread more easily in an open plan space so it's important to choose a high quality extractor fan to keep this from becoming an issue. Similarly, noise levels can also appear louder as noises

3. Comfort is Key: Think about Seating

To encourage relaxed conversations, it's important to incorporate comfortable seating options. From plush bar stools at the kitchen island to a cosy nook with soft cushions, creating areas where people can comfortably sit and talk enhances the kitchen's social atmosphere. It's also a good idea to arrange seating to face the kitchen so everyone can be included.

In an open-plan space, flexibility is key so you may wish to opt for seating that can be easily moved or re-arranged. This makes it easy to adapt to different activities, from casual gatherings to more formal dining settings.

4. Be Strategic with your Zones

Designing a sociable kitchen doesn't have to mean compromising on function and proper zoning can ensure that socialising doesn't interfere with cooking. Try to create dedicated spaces for food prep, cooking and cleaning that are separate from where guests or family members gather. This prevents overcrowding in the kitchen and keeps everything organised.

A key factor in creating a functional and sociable kitchen is the strategic positioning of appliances. For instance, placing the oven and hob away from high-traffic areas ensures the cook has enough space to work safely without frequent interruptions. The exception is when the hob is positioned on an island, in which case social seating is typically placed on the opposite side at a safe distance. Meanwhile, the refrigerator, often used by both the cook and other family members, should be located in a transitional zone. This allows easy access to drinks or snacks without disrupting the cooking area.

5. Don't underestimate the Importance of Lighting

Lighting plays a critical role in creating a warm, inviting atmosphere in a sociable kitchen. Lighting needs to be versatile enough for cooking tasks whilst also setting the right



atmosphere for socialising and dining. The best way to achieve this is with a layered lighting scheme, combining task, ambient and accent lighting to meet different needs. Dimmable lights can also be helpful in transitioning from bright, functional cooking light to softer, more ambient lighting when it's time to entertain.

6. Store & Order: Everything in its place

Storage is essential in designing a sociable kitchen because it ensures a clutter-free space and an inviting atmosphere where people will want to gather without feeling cramped or overwhelmed by mess. Adequate storage allows easy access to cooking tools, ingredients and appliances while keeping countertops clear for social interaction, ensuring the kitchen is an enjoyable space for both cooking and socialising.



Designing a sociable kitchen is about more than aesthetics, it's about creating a functional, inviting space where people naturally gather. With careful thought and planning, your kitchen can become the heart of your home, where memories are made from big family celebrations to simple everyday life

www.willisandstone.co.uk



GRAPHENSTONE'S AIR PURIFYING PAINTS

Are the perfect fit for restoration and repainting projects.

Graphenstone will show why its range of air purifying and Cradle to Cradle Certified® paints are perfect for restoration, repainting and construction projects at the Surface Design Show and at Futurebuild 2025.

With an expanding clientele in the heritage and refurbishment sector including prominent clients such as the Royal Opera and Ballet, the Ashmolean Museum in Oxford, Historic Royal Palaces, English Heritage, Grosvenor Estates, Church House Westminster (Grade-II listed), and the Mall Galleries (Grade-I listed), Graphenstone is fast-becoming the go-to brand for those seeking a best-in-class sustainable paint option with full traceability, and which meet rigorous Green Building standards.

Graphenstone's range of paints fuse traditional raw materials such as lime, calcium carbonates and natural materials with graphene, one of the planet's most robust inert carbon fibres. This combination results in a natural mineral-based coating with Class 1 durability.

This unique Graphene technology operates at a nanotech level, providing structural support and exceptional strength, resulting in a 20% increase in flexibility.

In addition to its anti-bacterial and odour-absorbing qualities, the Graphene element enhances elasticity, reducing cracking and snagging, preventing mould and fungus, ensuring superior washability, and increasing coverage levels. This makes it an ideal choice for refurbishment and restoration projects.



"With sustainability and responsible sourcing becoming increasingly vital for architects and designers, those in procurement must work diligently to ensure that everyone in the supply chain adheres to the same original intent."

The paints produced by Graphenstone boast outstanding photocatalytic capabilities, actively breaking down harmful emissions in the air. The company estimates that up to 5 kg of CO₂ can be absorbed from the surrounding environment per 15-litre pot during a 30-day curing process.

On a recent project covering a printable area of 10,000 m², where its paints were specified, Graphenstone's technical team calculated a CO₂(e) saving of over 4.4 tonnes when using two coats of its flagship formulation, Ambient Pro+.

Graphenstone's CEO, Patrick Folkes, also emphasizes the importance for specifiers to protect their specifications. These specifications provide critical technical assurances regarding quality and standards, especially important when dealing with older or listed buildings.

Visitors to both upcoming trade shows can also experience Graphenstone's revolutionary new 'Peel and Stick' colour samples for the first time. These 2D colour 'stickers' contain 30% recycled materials, are 100% recyclable, and use around 94% less paint than typical sample pots.



Walls in Cinnamon, panelling and shelf surround in Carnelian and interior shelves in Cinnabar.

****Plant a Tree with Every Swatch****

For every £1.50 colour sample sold, Graphenstone will plant a tree in collaboration with Switch2Zero.

Visit Graphenstone at Stand 241 from 4-6 February at the Business Design Centre in London and at Future Build on Stand G20a from 4-6 March at Excel, London.

www.graphenstone-ecopaints.store/peel-and-stick-samples/

raphenstone's complete range of paints and new Peel and Stick colour samples are now available through selected branches of Brewers Decorator Centres, including Abingdon, Barnstaple, Cambridge North, Cheltenham, Exeter, Leicester Freemans Common, Louth, Maidenhead, Putney, Trowbridge, Surbiton, and York.



Walls in Ardennes; Doors and Frame in Silver Moss.



GRAPHENSTONE

PURIFYING PAINTS

Peel & Stick Colour Samples

Eco-Friendly with 94% less paint and 98% lower CO2e than a sample pot



Order online at brewers.co.uk

Available now at Brewers Decorator Centres: Abingdon, Barnstaple, Cambridge North, Cheltenham, Exeter, Leicester Freemans Common, Louth, Maidenhead, Putney, Trowbridge, Surbiton, and York.

graphenstone.co.uk | info@graphenstone.co.uk | +44 (0) 1379 772 940





400 WOOD ROAD

BALANCE ARCHITECTS

Balance Architects embarked on the ambitious conversion of an outdated office and warehouse complex into a best-in-class, Class-A GMP/ advanced manufacturing and life science facility in Braintree, MA. In addition to the complete transformation of the building, significant infrastructure investments were made in both the power and water systems to meet the needs of future tenants. Today, the building is fully leased to two tenants: Integra LifeSciences, a leader in neurosurgery, and First Electronics Corporation, an advanced manufacturing company specializing in high-grade cabling.

The initial phase of the project involved stripping the building down to its core elements: the slab, steel columns, and roof. Prior to this intervention, the building, which housed a combination of office, lab and warehouse areas, was clad in dented and damaged metal panels, with outdated

architectural concrete masonry units (CMU) at the entrance. The overgrown landscape had obscured the building, and the limited fenestration allowed minimal natural light to penetrate the interior. The interior space functioned as a dismal labyrinth of cubicles and corridors, completely devoid of natural light.

With the primary goal of bringing light deep into the building, the Balance team designed large windows across the facade and created a fully glazed, double-height entry. On the warehouse side, typically associated with artificial lighting, we introduced a double-height curtain wall along the entire length of the loading

bay.

To create a highly energy-efficient envelope, the design team used a combination of insulated metal panels and a terra cotta rain-screen system, placing all insulation on the exterior. By carefully selecting the size and color of the terra cotta tiles, Balance created subtle shifts in color and movement along the expansive facade. Weston Architectural Supply oversaw the Herculean effort of unloading and installing the custom terracotta pieces, which were shipped out of order—the parking lot resembled a giant jigsaw puzzle for nearly a month.

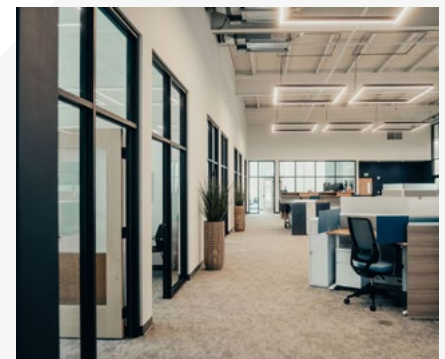
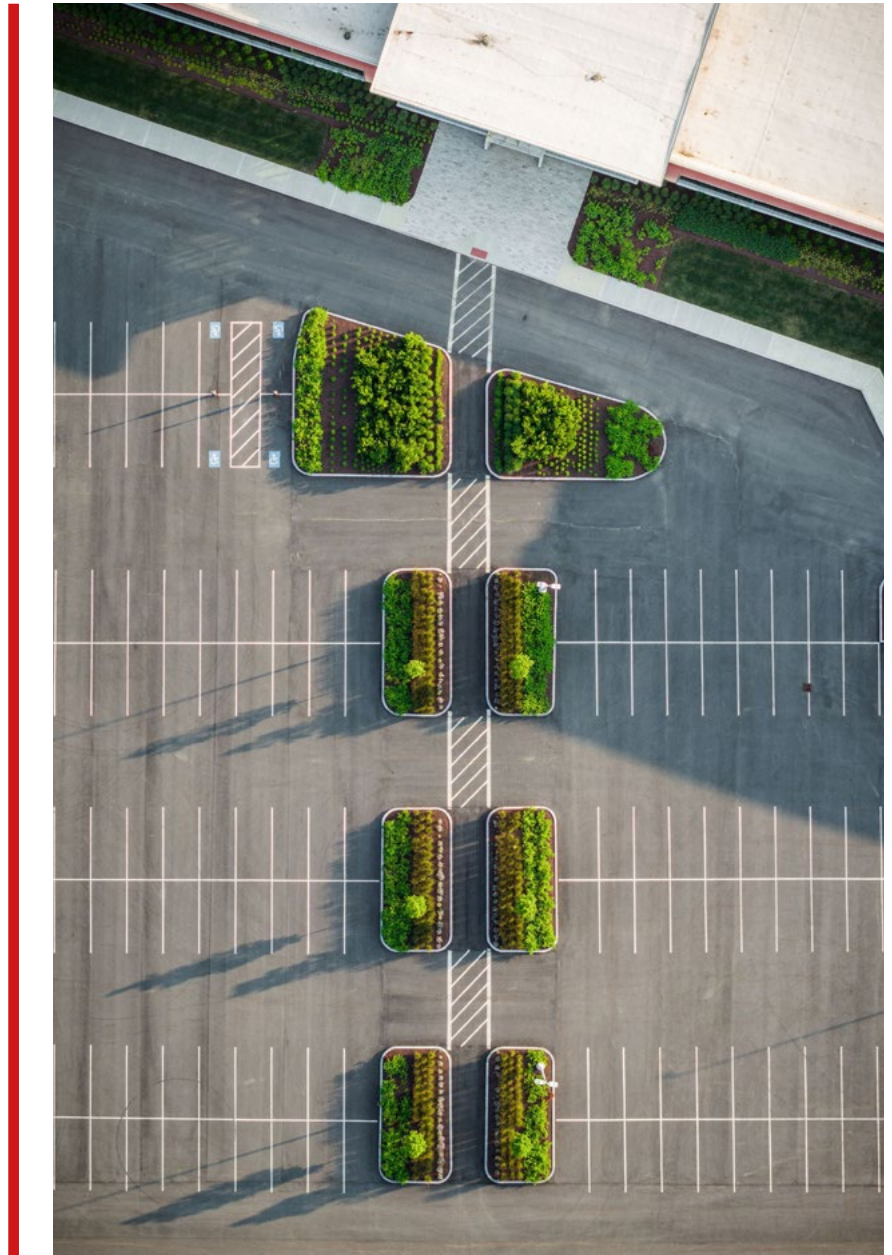




For the interior fit-out, Balance collaborated with The First Electronics Corporation (FEC), a manufacturing company specializing in high-grade cabling. The business needed a space that would not only accommodate its office and manufacturing needs, but also transform the way its team worked. With a legacy spanning over 60 years, Boston-based FEC crafts custom electrical assemblies for challenging environments.

For FEC, 400 Wood Road represented a unique opportunity to revolutionize the company's operations. The sprawling facility enabled a reimagining of manufacturing workflows and office layouts, enhancing collaboration and connectivity across departments. Through strategic spatial planning and the installation of a prominent interior curtain wall, the new design fosters visual connectivity among manufacturing, assembly, and engineering teams.

The revitalized lobby serves as a beacon of openness and innovation. Acting as a central gathering point for employees and visitors alike, the spacious lobby cultivates a sense of unity and pride among its workforce. A striking barrel vault spans the front section of the building, seamlessly linking various areas and departments. Natural light now floods every corner of the manufacturing floor, a dramatic improvement from the dim confines of FEC's former facilities. This abundance of daylight not only enhances the working environment, but also underscores the company's commitment to creating a modern, inspiring workplace for its employees.



ADD VIBRANCY TO YOUR INTERIOR PROJECTS WITH OSMO

Treat your interior wood surfaces to the care it deserves with Osmo Interior Wood Wax Finish Intensive.



At Osmo, we specialize in wood products, spanning over 140 years of expertise to develop our own natural wood finishes. We understand what truly matters when it comes to wood protection and finishes.

The Intensive Colours in our Wood Wax Finish range offer an opaque finish and ensures that interior wooden surfaces remain nourished and in peak condition. This product is perfect for finishing wall panelling, mouldings and furniture. It's also a favourite for children's toys!

Like all Osmo finishes, Wood Wax Finish is formulated with natural ingredients and remains breathable and microporous

once dry, which means the finish will allow the wood to naturally regulate its moisture content, minimizing swelling and shrinkage.

Osmo Oil finishes penetrate and nourish the wood, maintaining its health and flexibility, which makes the dried coating resistant to cracking, peeling, and flaking, and with timely maintenance, spot repairs or touch-ups can be done without the need for sanding.

The finish is extremely safe and once dry, present a surface that is safe for humans, animals, and plants.

When it comes to colour options, you're truly spoiled for choice, the Wood Wax Finish can be easily

mixed to almost any colour that takes your fancy using the Osmo Tinting System. Simply locate your nearest Osmo MIX IN STORE stockist via the Osmo UK website and have your product mixed in-store, in seconds!

With a coverage of up to 60m² per 2.5L the product really does go further. You can also mix smaller 125ml sample tins to test colours, ensuring you select the perfect shade for your needs.

Whether you're looking to start a new project or need a top up of your blended product, Osmo has you covered with the perfect wood care product no matter the project.

OSMO, GOOD FOR WOOD.

Find out more at www.osmouk.com

WOOD WAX FINISH



ENDLESS POSSIBILITIES OF
COLOUR FOR INTERIOR
WOOD SURFACES.



HIGHLY
REPELLENT



HIGH
COVERAGE



NATURAL
INGREDIENTS



BREATHABLE
FINISH

WWW.OSMOUK.COM

MORE
INFORMATION



CLIFTONVILLE HOUSE

Architects: Sonn - www.sonnstudio.co.uk

This project involves the extension of a Victorian terraced house in the Cliftonville area of Margate, located along the dramatic southeast coastline of the UK. The renovation entailed a comprehensive overhaul of the existing property, replacing the ground floor kitchen outrigger with a new, light-filled kitchen, and reconfiguring the first floor to create a master bathroom and utility room.

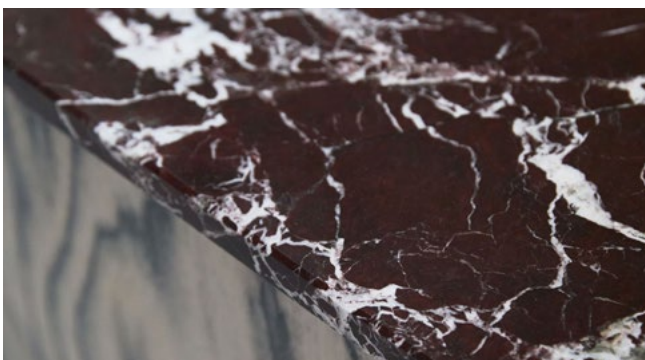
The design takes inspiration from the local landscape of limestone cliffs, eroded seashells, and primitive stone structures. A feature curved ceiling imitates the swells of the local waves and separates the new extension from the existing building. Simple yet bold forms define the external façade, with light grey polished concrete flooring seamlessly transitioning to end block stone flooring outside.

In the kitchen, a restrained material palette is punctuated by the bold ALPI Sottsass Veneer on the units, complemented by a Rosso Levanto marble worktop and splashback. The large kitchen island is clad in stainless steel, which subtly pairs with the polished concrete flooring. The kitchen is linked to the original house through two arched walkways, one of which serves as a pantry. A roof light above this area brings natural light into both the pantry and the adjoining snug, enhancing the airy, open feel of the space.



'The house is just a short walk from the beach, so we wanted to create a versatile space for a growing family. Every room, from the front to the rear of the property, has been opened up, but sheer curtains allow for flexible subdivision. The interiors are bathed in natural light, with a combination of warm yet durable materials that reflect the surrounding environment.' -Tim Robinson | Director

The ground floor toilet features soft, curved corners, finished in a high-gloss burgundy, with moody black and chrome fixtures. On the first floor the master bathroom centers around a zellige-tiled bath, set in the middle of the room, with a double shower positioned along the wall. Brass fixtures compliment the muted palette along with tumbled marble tiles which add a pop of texture to the space.



Area: 60 m² Year: 2024 Photographs: Philippa Langley Manufacturers: K Rend
Lead Architect: Tim Robinson Main contractor: Coast Projects

PREMIER
LOFT LADDERS

Counter-balanced operation for ease of use

Telescopic handrail & large treads for comfort and safety

Heavy duty ladder for strength & durability (load rating of 200 kg/tread)

The Elite retractable ladder offers strength, versatility & ease of use...
www.premierloftladders.co.uk/elite
 0345 9000 195 | sales@premierloftladders.co.uk

0800 7833 228 sales@fireretardantuk.com
fireretardantuk.com
 HR PROF is manufactured and approved to ISO 9001-2008

HR PROF THE ECO-FRIENDLY FIRE RETARDANT

- Water based - does not leach
- Allows wood to breathe naturally
- Internal / External application
- Colourless - Odourless
- EN 13501 – 1
- EN 16755 (EXT1) according to EN 927-6
- Euroclass B-s1-d0
- Non Toxic - No Solvents
- BS 476 part 6 & BS 476 part 7
- BM TRADA ISO 9001 Certificate
- Meets the **highest** EU standards

No HR Prof With HR Prof

Classification Reports & Certificates: Pine, Spruce, Scots Larch, Siberian Larch, Western Red Cedar, Oak, Thermowood, Birch, Birch Ply, and others, both Internal and External.

FSB
www.fireretardantuk.com
0800 7833 228 sales@fireretardantuk.com

STAINLESS STEEL
SINKS • WORKTOPS • CABINETS • SHELVING

GEC ANDERSON®
the stainless steel specialists
www.gecanderson.co.uk



BRADFORD COLLEGE

Officially Opens STEM Building After £6.9m Refurb

Guests from education, construction, and regional employers joined staff and students for the official opening of Bradford College's Garden Mills building.

A multimillion-pound renovation project has transformed the derelict mill on Thornton Road into a flexible digital, science, and allied health training facility for higher-level students.

The 1900s five-storey building opened after months of construction work supported by £5.8 million in funding from The Office for Students (OfS) Higher Education Capital Fund and a £1.1 million College contribution.

The site is now Bradford College's dedicated building for HNC, HND,



and degree programmes in STEM (science, technology, engineering, and mathematics), including digital and ophthalmic courses. The site supplements the extensive STEM facilities established across other

College campuses.

Contractors Tilbury Douglas led the Garden Mills project and installation of industry-standard equipment, including six digital

IT labs, an ophthalmic dispensing suite, a prep room, a clinical suite, a real-life work environment with consulting and testing booths, a collaboration area, and academic teaching spaces.

Bradford College Director of People Services, Sarah Cooper, addressed invited guests, which included employers from digital and ophthalmic industries such as Specsavers and the Association of British Dispensing Opticians, as well as representatives from Bradford Council and the West & North Yorkshire Chamber of Commerce.

After speeches, guests enjoyed a tour of the new cutting-edge Garden Mills facilities which concluded with a ribbon-cutting ceremony led by Bradford College CEO & Principal, Chris Webb.

Garden Mills is one of several current Bradford College capital developments. Over the last two years, Bradford College secured nearly £32 million in funding, which is being used to enhance, refurbish, and build aspirational new facilities in the heart of Bradford.

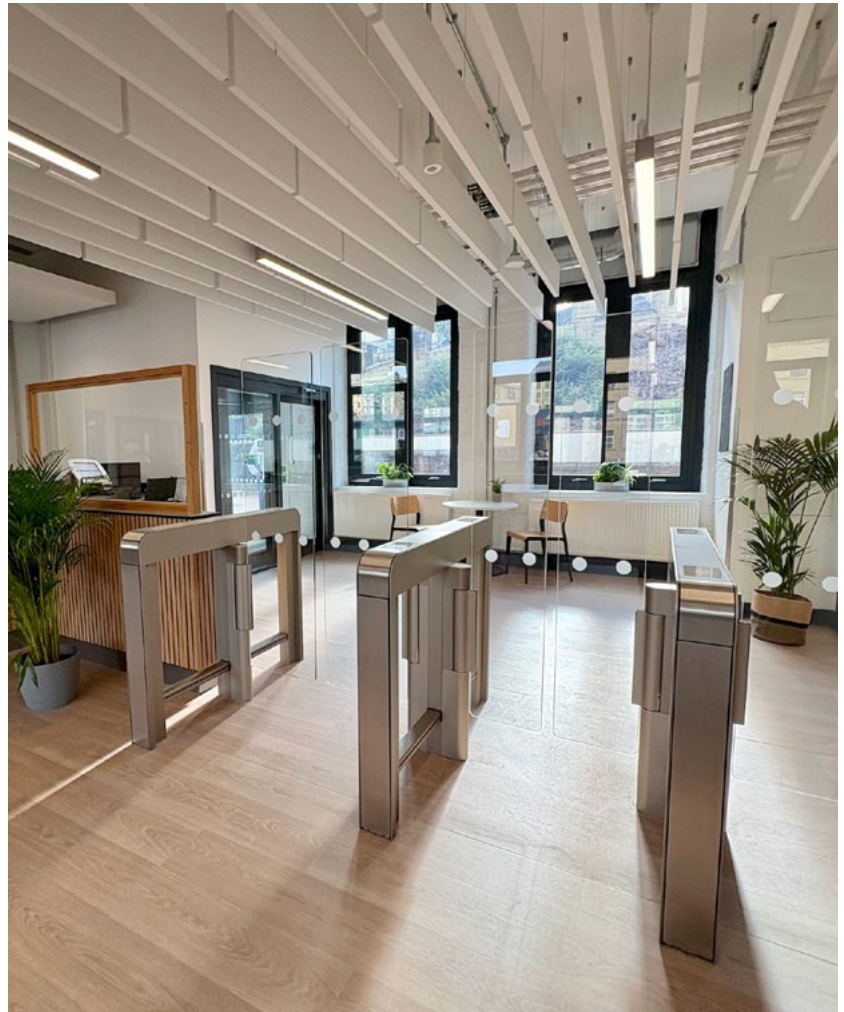
Other construction projects include newly completed vocational T Level facilities in the College's David Hockney Building, overseen by Sewell Construction and funded by £3.5 million from the Department for Education (T Level Capital Fund - Wave 5). New facilities include a commercial barbering salon, nail bar, collaborative lecture spaces, TV studio, media editing and recording studios, and a remodel of The Grove training restaurant.

Work on the College's purpose-built Future Technologies Centre is also well underway with Phase 2 of the scheme led by contractor Morgan Sindall. This new site will support the growth of technology and low-carbon skills capability within West Yorkshire and be the home of modern automotive and digital engineering curricula, such as electric/hybrid vehicles and advanced manufacturing.



"We are thrilled that this incredible new learning environment is now open to our staff and students, and I'm sure you'll agree it is a wonderful new addition to both Bradford College's estate and the resources available to the local community."

-Sarah Cooper



"We're delighted that Garden Mills is now ready for staff and students. It is an essential part of our estates strategy and perfectly demonstrates our ambition of opening up pioneering student careers that support regional growth."

The College's Automotive, Digital and Engineering Department will relocate to the new premises once completed in 2026. Students will use industry-relevant facilities to gain skills in new technologies for careers in a fast-moving sector. The project was made possible by a £15 million investment from the Department for Education's Further Education Capital Transformation Fund (FECTF), boosted by a £2m College contribution.

The Future Technologies Centre, Garden Mills, and T Level facilities all form part of Bradford College's ambitious estates strategy. The capital masterplan centres around building facilities that open up pioneering student careers and support regional economic growth.

Find out more about the Garden Mills project and other ongoing capital projects: www.bradfordcollege.ac.uk/capitalprojects

screwSHOP.co.uk

SCREWS FIXINGS FASTENERS BRACKETS FOAMS SEALANTS
ADHESIVES IRONMONGERY FURNITURE FIXINGS AND MORE



LOW PRICES UK NEXT DAY DELIVERY

THE EXPERTS CHOICE SINCE 1985

THE HOME OF



SCAN TO
VISIT US



TURBOOWIK
THE PRECISION MULTIPURPOSE
PREMIUM WOODSCREW



**RHINO
SCREWS**



EAZYMIX PLASTER ACCELERATORS & RETARDERS

CHANGE PLASTER SETTING TIMES
TO SUIT THE JOB



WWW.EAZYMIK.CO.UK

RESTORATION REIMAGINED

Transforming Spaces with Sustainable Cork Solutions by **Granorte UK**

Every restoration project tells a story—a journey to preserve the charm of the past while embracing the possibilities of the future. For interior designers, the challenge is finding materials that honour the heritage of the space without compromising on modern needs like sustainability, comfort, and durability. This is where cork floors and wall tiles come into play, offering a perfect blend of eco-friendliness and visual appeal. At the forefront of this transformation is Granorte UK, a leader in innovative cork solutions that reimagine restoration design.

Picture an elegant Victorian townhouse, its timeless character at odds with the wear and tear of years gone by. Designers tasked with its revival face a dilemma: how to preserve its vintage beauty while meeting today's sustainability standards. Enter cork, a material as versatile as it is practical. With Granorte UK's wide range of cork floors and tiles, available in patterns that mimic wood or stone, designers can seamlessly marry tradition with modern aesthetics. The result? A space that radiates warmth and character, with cork's natural texture enhancing its story.

The sustainability of cork makes it an ideal choice for restoration. Harvested from cork oak trees without damaging the tree, it's a renewable resource that regenerates naturally. Granorte UK elevates this eco-friendly material by incorporating recycled content into their products, reducing waste while delivering stunning design solutions. By choosing cork, restoration projects not only protect the environment but also create interiors that resonate with eco-conscious homeowners.

Cork's benefits extend beyond its beauty and sustainability. Think of an aging manor house, once drafty and cold, transformed into a cosy



Vita Classic Digitally Printed Cork Floor planks

retreat. Cork's natural thermal insulation helps maintain consistent indoor temperatures, making it an energy-efficient choice for older buildings. Add its acoustic insulation, which muffles noise and creates a serene environment, and it becomes clear why cork is a designer's dream material.

Health and comfort are equally vital in restoration. Cork's hypoallergenic properties and resistance to mould and mildew make it a safe and hygienic option for any interior.

To sum up, Granorte UK's innovative cork floors and wall tiles are the ideal choice for any restoration project. Whether you're breathing new life into a historic home or modernizing a commercial space, their solutions offer the perfect combination of sustainability, style, and functionality. By choosing Granorte UK cork, you're not just preserving the past—you're creating a future that celebrates both environmental responsibility and the comfort of everyday living.

GRANORTE®

www.granorte.co.uk

info@granorte.co.uk

TILLEULS HOUSE EXTENSION

Tilleuls project is a typical example of housing in residential areas. The plot was divided to generate profit, the house was too small, too much partitioned, not adapted anymore to the current lifestyle, and non-insulated. The project quickly heads toward a renovation of the existing building, energetically and spatially, completed by an extension.

The partition of the house has been redesigned. The side of the entrance is changed to face the street and create a filter between public and private. The ground floor's inner space has been entirely transformed. All the common spaces are placed in a unique volume, a large room fully open towards the garden. The connection to the existing house is resolved by the plan, two curves that link the extension with the existing house.

After passing through the entrance, with a high ceiling and is full of natural light, the visitor is guided by the curves to the central space, darker, and with a lower ceiling, containing all the servant functions, as well as the distribution to the first floor. This compressed space contrasts with the high ceiling and garden's perspective of the living space full of light. The sloping roof extends the movement dynamic from the entrance to the garden. The color on the two curves brings joy and softness to this white and bright space.

The extension is constructed in large insulating bricks and wooden framework, on a concrete elevated slab and micropiles. The underneath of the wooden beams are kept visible in reference to Japanese spaces. The walls and roof are both insulated respectively with 7,8 inches and 11,8 inches of wooden fibers



Photographs: Philippe Billard



to guarantee the best thermal comfort possible. A heating floor brings an optimal distribution of the heat. The path of the sun is made visible on the house's floor by the oculus drilled into the roof. At night we can observe the stars through it.

Seen from the garden, the extension envelops the existing house. The blue zinc dialogue with



the existing tiles. The integrated gutter allows to slim the edge of the roof making it more abstract. The overhanging roof protects the windows from rain and direct solar radiation in summer, completed by a thermal curtain. The large window is made of 8 panels that slide allowing different links between inside and outside. It is extended by the mirrors on both sides which makes the wall edge disappear. Geometry guides all the conception steps: in plan, in elevation, and the fixed furniture. Color reveals the spatial elements.

Architects: miogui architecture - www.mioguiarchitecture.fr



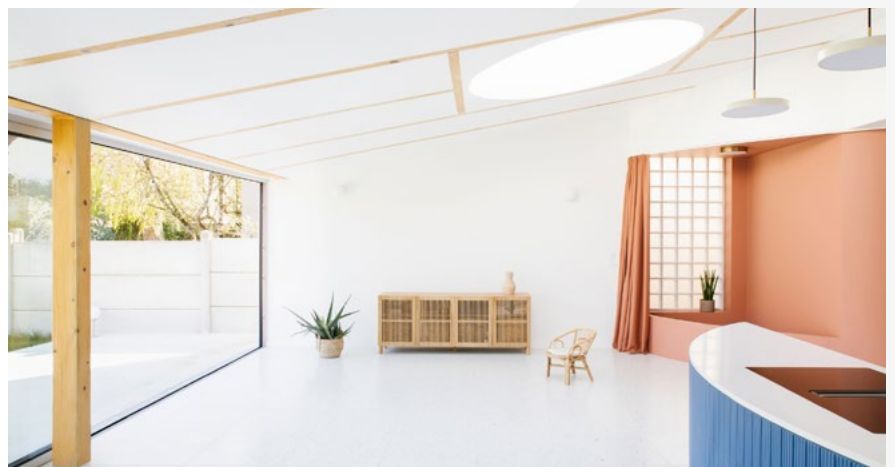
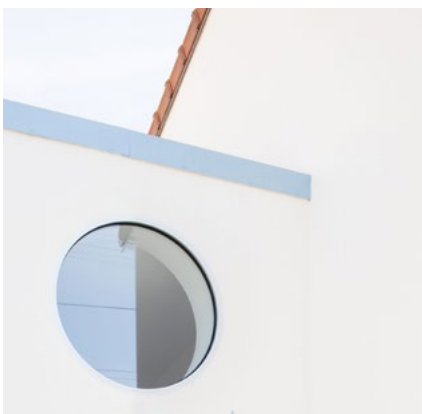
Photographs: Philippe Billard



Area: 140 m²

Year: 2024

Lead Architects: Sabine Fremiot, Léo Berastegui



Space V.R – Computer Generated Architectural Illustration

Space VR is a dynamic digital media company based in the Northeast of England, established by three professionals with extensive experience in interior design and visualization. Our primary focus is on providing high-quality computer-generated artist impressions, animations, virtual and augmented reality presentations, 360-degree panoramas, and a wide range of related services.

Our expertise lies in creating CG digital materials for both interior and exterior spaces, which are particularly beneficial for landlords and property developers looking to market their properties well before they are ready for traditional photography. The advantage of CG images over conventional photography is that they allow us to present properties in their most appealing form consistently. By using our extensive library of readymade assets, we can furnish



spaces with furniture, kitchens, and fittings, ensuring a polished and complete look while also saving time and reducing costs. Accurate and impressive CG images attached to planning applications also facilitate smoother approval processes.

Our sister company, Space I.D, specializes in residential design with

extensive experience in creating accommodation solutions. By leveraging the expertise of both Space I.D and Space VR, we offer a seamless, cost-effective process by keeping everything under one roof. This integrated approach ensures smooth collaboration and efficient project execution, delivering high-quality design and visualization services for the architectural sector. Together, we provide comprehensive solutions from initial design concepts to immersive visual presentations, catering to all your illustrative and marketing needs. We can create impressions to suit all budgets and deadlines, so you can have a set of multiple images for your entire portfolio, or just one image, depending on your needs.

Drop us a line, we'd be delighted to provide a quote for photorealistic, highly detailed and costs effective CG imagery for your architectural projects.

www.spacevr.co.uk

Computer Generated Impressions
Virtual Tours
Animations
Virtual Staging
Augmented Reality
and everything in between



SPACEVR
WWW.SPACEVR.CO.UK

TRANSFORM HOMES: THE BENEFITS OF PVC CLADDING ONLY HS PLUS

Freefoam

Freefoam Building Products are specialist manufacturers of PVC cladding. Colin St John, Commercial Director, shares his view on the benefits of PVC cladding for refurbishment and renovation projects/professionals.

The Landscape of home renovation is evolving, cladding stands out as a valuable asset, combining both versatility and functionality. Homeowners are increasingly drawn to modern solutions, and among them, PVC cladding has gained significant traction for its innovative applications and remarkable benefits.

PVC cladding serves as a dynamic option for those looking to revitalise homes, greatly enhancing the exterior appearance or even completely transforming it.. Renowned for its exceptional durability, PVC cladding resists the elements and retains its vibrant colour, ensuring that homes not only look great but also stand the test of time. This durability minimises the need for frequent maintenance, repairs and replacements, making it a financially prudent choice for homeowners.

Indeed one of the standout features of PVC cladding is its low maintenance needs. Unlike traditional materials that may require constant upkeep, PVC can be easily cleaned with just soap and water. This ease of maintenance is especially appealing to busy homeowners who want to spend less time worrying about upkeep and more time enjoying their beautifully transformed spaces.



Another compelling reason to consider PVC cladding is its aesthetic versatility. Available in a wide range of colours, textures, and finishes, PVC cladding can be tailored to suit any design preference, from sleek modern styles to more rustic looks. This adaptability allows homeowners to experiment creatively, transforming ordinary walls into stunning focal points with minimal effort.

Moreover, PVC cladding is an excellent insulator, contributing to improved energy efficiency in homes. By enhancing insulation, homeowners can reduce energy costs, maintaining comfortable indoor temperatures year-round. This eco-friendly aspect aligns with the growing demand for sustainable living solutions, making PVC cladding a responsible renovation choice.

In addition to its visual appeal and functional benefits, installing PVC cladding can significantly increase

property value. A house that looks modern and well-maintained captures the interest of potential buyers, making it a worthwhile investment for homeowners looking to sell in the future.

PVC cladding offers an impressive combination of durability, low maintenance, versatility, and aesthetic appeal. For builders, contractors and property developers this innovative material can profoundly transform exteriors, making it an ideal choice for the forward-thinking renovator. With PVC cladding, any home can achieve the perfect blend of style and function.

freefoam.com



Experts in natural stone

Natural stone is becoming an ever more popular choice of material for projects both inside and outside the home. With a wide range of materials, colours and styles to choose from, natural stone offers a timeless quality to any space. Here are three great ways to incorporate natural stone into your home.

Masonry

With advances in technology allowing for precise digital templating, 3D design and innovative fabrication methods, the opportunities to create unique and eye-catching stone pieces are endless. From statues, to columns, to one-of-a-kind hearths and worktops, Stoneworld offer a complete stone masonry service. Our experts can take your ideas and recreate them in premium natural stone at our Oxfordshire workshop. Image: Limestone Flooring



Stoneworld can help you develop a staircase to your specification, with bespoke cutting, edging, risers and more. With our full-service stone staircase options, our experts can guide you through every step of the process from design to installation and aftercare.



Interior Flooring

The natural beauty of stone has become increasingly sought after in renovation projects. As the desire for natural materials and longevity in projects has grown, so too have the options available to create the perfect interior. From traditional slate kitchen floors to luxurious limestone living rooms, natural stone allows you to create beautiful flowing spaces to your exact specification which will last a lifetime.

Whatever the project, our team is here to offer you the finest quality natural stone, fabricated with precision to your specification.



Visit us at www.stoneworld.co.uk or contact us at sales@stoneworld.co.uk



STONEWORLD

THE FINEST NATURAL STONE

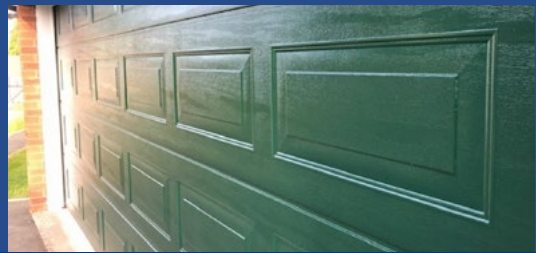
MASONRY | FLOORING | STAIRCASE | PAVING | BESPOKE

www.stoneworld.co.uk

(01844) 279274

Arridge Garage Doors

Since 1989



- Top Brands
- Discounted Supply to trade and retail
- Quality installation service available



REVIEWS

4.82 Rating

sales@arridgegaragedoors.co.uk

arridgegaragedoors.co.uk • 01691 670 394

Garador's Tried and Tested Carlton Proves Popular

With a classic design that suits so many different styles of property, Garador's Carlton up & over garage door is one of the most popular garage doors on the market.

The Carlton offers exceptional value for money with a tried and tested design that's both long-lasting and low maintenance, along with a competitive price point. Constructed from high grade galvanised steel, the crisp vertical swage complements modern architecture, but also sits well on traditional builds or alongside other garage doors where there are blocks of garages in a row. The door has a rivet free design meaning the surface of the door panel is smooth and a durable powder-coat paint finish protects the door from the elements.



Garador's Carlton comes in a choice of 20 standard colours, including the ever-popular Anthracite Grey (RAL 7016) plus is available in the full range of sizes up to 5500mm wide including standard, made-to-measure and double door sizes.

To find out more about the Carlton or any of the Garador range, call 01935 443722 or visit www.garador.co.uk

Briton Fire-Rated Door Closers

Improve Your Building's Safety,
Security & Compliance



- ✓ Compact
- ✓ Fixed strength
- ✓ Quick & easy to install
- ✓ 10-year performance guarantee



Briton 121CE overhead door closer



Briton 2003V overhead door closer

VISIT US AT ZEROPLUS.CO.UK OR CALL US ON: 01785 282910

TOUCH

IRONMONGERY LTD



www.atouhofbrass.co.uk

210 Fulham Road, Chelsea London SW10 9PJ

CELEBRATING 40 YEARS

One of London's leading Architectural Ironmongers

Originally called "A Touch of Brass", TOUCH changed their name in 2003 in reaction to advancing market changes in architectural Ironmongery to reflect the broader range of products and finishes that they sell.

In fact today Touch supply 20 different finishes including Brass, Satin Brass, Polished Chrome, Polished Nickel, Satin Nickel, Copper, BMA, Antique Brass, Black, Pewter, Ceramic, leather, Stainless Steel, Satin Stainless Steel, Gun Metal & 4 different shades of Bronze and the list keeps growing. Whatever finish you require, Touch can help you get the right look.

Touch occupy their recently refurbished showroom at 210 Fulham Road, Chelsea, where they stock and display a vast range of their 5,000 products. With a customer base including Architects, Interior Designers, Builders and private Individuals who are interested in the quality end of the Ironmongery market, the company also have a healthy export market to all corners of the world, namely the Middle East, Europe and the Americas.

Touch Ironmongery's owner and founder, Bill Benham, has 42 years' experience in the Ironmongery trade, as does his colleague Jim Haselup. Saleem Qureshi is the newest member of our team and has 21 years' experience, meaning their knowledge is unrivalled in this industry.

The range of products supplied by Touch date from circa 1640 French (Louise XIV) and cover all subsequent periods (Georgian, Edwardian & Victorian), Art Deco and contemporary pieces also make up the product ranges.

Touch showcases the very best of British manufacturing; the best ranges are still produced in the Midlands by craftsmen in factories dating back 200 years or more.

Touch Ironmongery have recently become suppliers for **Designer Doorware (Australia)** Who have beautiful products with a cutting edge design Metal, Wood and concrete. We also have the exclusive rights to sell the **Olaria (Barcelona)** range in the UK.

Olaria make all our bespoke products, they have incredible levels of workmanship.

Touch also sell European manufactured goods which are considered to be of a very good quality.

With trends continuously evolving new and innovative products are constantly under development.

Touch understand that keeping up with the fashion-shifts is imperative in order to provide every customer with the best solution for their requirements.

Ironmongery can be a difficult and complicated aspect of a building project, as a result Touch aim to take this awkward aspect and make it user friendly and clear to understand by offering an on-site service where they carry out a detailed door by door, window by window, room by room Ironmongery schedule, highlighting all requirements and identifying all requirements.

Restoration is a large part of the business Touch will undertake complete Ironmongery refurbishment projects, and can restore old paint covered door furniture to their former glory, looking as good as new again at a fraction of the cost to replace.

For more information about Touch Ironmongery or to arrange a showroom visit please call 0207 351 2255 or alternatively visit www.atouhofbrass.co.uk

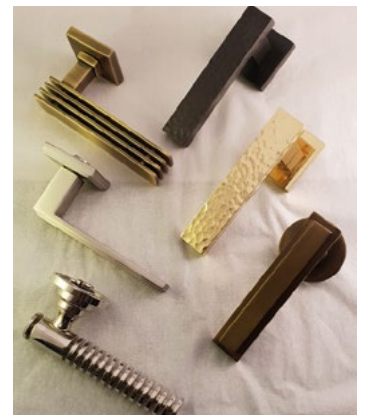


BRITISH & EUROPEAN MANUFACTURERS SUPPLYING THE FINEST QUALITY IRONMONGERY

Touch combine traditional skills with modern manufacturing techniques to produce the most beautiful, quality fittings, built to stand the test of time.

As well as specialist bespoke items, Touch supply over 1000 products, available in 23 different finishes to furnish high end residential and commercial properties, royal palaces, government houses, historic castles and stately homes.

Olaria, available from Touch Ironmongery
www.atochofbrass.co.uk
& www.olariabarcelona.com





The HES2-150. Because the Pursuit of Perfection is Never Finished

Bestseller. Flagship product. Award-winner. A revolution in its category. All of these and more are true of our HES concealed hinge range. And yet, from the way we keep tinkering with the design and adding new lines, you'd think we weren't satisfied.

What's certainly true is that we don't believe there's any such thing as the end of a design journey. No matter how groundbreaking, no matter how many awards we win, there's always *something* we can rethink, adjust, improve. There's no 'game over' in pursuit of perfection. When it comes to innovation and improvement, we hold our hands up. We're obsessed.

So yes, we've done it again. We've added *another* product to the HES range. The HES2-150 is just the latest chapter in a success story that now stretches back 30 years.



Striking Design Gold

Many businesses would have been more than content to rest on their laurels after striking design gold with the HES3D all those years ago. It's not often you reimagine an entire product concept. But by engineer-

ing a way for a traditional 'butterfly'-style hinge to tuck all parts neatly into recesses in the door and jamb when shut, we did just that. Without the need for a pivot arm, we created a concealed hinge suitable for interior doors as well as cabinets.

From that one moment of inspiration, we've spun out a whole product range. Nowadays, there's an HES hinge for practically every architectural application, from cabinets of all sizes to interior and partition doors. And still we keep going.

Simplicity and choice

The HES2 model is a relative newcomer to the range and already it's an award-winner. The tinkering we did this time was to simplify installation.

For all the aesthetic and functional benefits of the original HES design, it came at a cost. Door hanging is tricky at the best of times. With the original HES models, you had to mortise both the door and the frame or cabinet panel.

The HES2 halves the job. The door still has to be mortised to create the recess for the hinge parts to tuck into, so everything is hidden from sight when the door is shut. But the hinge separates into two parts. Once the door plates are installed, the other half of the HES2 is surface mounted on the jamb or cabinet interior.



We provide templates for pre-drilling the frame in the right place. The frame plate is clipped into the door plate before being screwed onto the frame. Once mounted, adjustment screws allow for vertical and depth alignment of up to 3mm for a perfect finish.

The surface mounting on the frame also means that the HES2 can also be fitted to slim framed or even frameless doors where there is not enough wood to mortise into.

The rationale for the new HES2-150 was to extend this to thinner doors as well. Our latest HES concealed hinge is designed for doors 35mm in thickness and upwards. A pair of hinges can support doors up to 40kg in weight, and three hinges can hold doors up to 50kg.

As well as surface mounting, hinge separation and 3D adjustment post installation, the HES2-150 is also non-handed, meaning it can be mounted for either left or right-hand opening doors.

Another HES product, another win for simplicity and choice. It's what gets us out of bed in the morning.

SUGATSUNE

Since 1930

Hinge
Innovation
Door
Evolution



Only Sugatsune



Japanese manufacturer of
LAMP and **ZweiL**
branded products

FURNITURE, ARCHITECTURAL,
MARINE AND INDUSTRIAL HARDWARE

Unit 635, Wharfedale Road, Winnersh
Triangle,
Wokingham, RG41 5TP
Tel: 01189 272 955
Email: sales@sugatsune.co.uk
www.sugatsune.co.uk

A personal service with engineering expertise

Beehive have been supplying, installing and servicing folding partitions for more than 30 years and offer advice, input and budgets to architects, contractors and end users to achieve workable solutions and specifications that balance practicality, aesthetics, timescales and cost. We would be happy to discuss your requirements on new build or retro fit schemes.

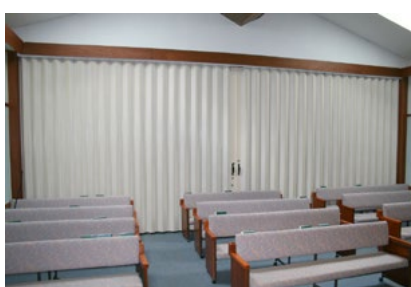
We pride ourselves on helping clients get the most out of their building's space and achieve the flexibility that is being looked for. We have installation all across the UK and Ireland and have supplied doors into Europe, Africa and the Middle East.

Our products include:

- Operable Walls, which are custom built top hung systems offering a wide range of layouts, stacking

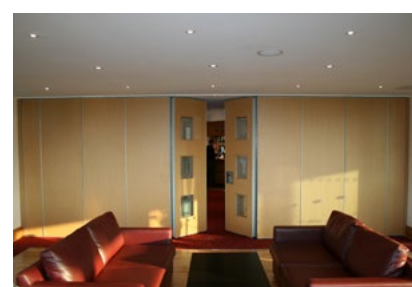
arrangements and finishes. Pass doors and glazing can be included as well as manual or semi-automatic operation of the sound seals. Sound ratings of up to Rw58dB are available with veneers, woodgrain and plain laminates and drywipe finishes and we regularly install these in schools, offices, hotels etc.

- Sliding Folding Partitions, these are generally floor supported with a slim floor track and avoiding the need for significant structural support at the head. Top hung



systems can be used where top support is available. Panels are hinged together and can be stacked at one end or be bi-parting. Pass doors are available and a wide range of finishes and glazing options.

- Concertina Partition systems are available in timber, vinyl and steel construction and are top hung systems used very often in schools, churches and village halls where ease of operation is particularly important



www.beehive-partitions.com



Beehive Folding Partitions Ltd

Specialists in Movable Sound & Fire Walls

Beehive Folding Partitions is a UK company dedicated to the custom supply and installation of high-quality sound-rated partitions, folding walls, concertina partitions and accordion automatic fire doors. The company also specializes in full partition turnkey projects as well as servicing, maintenance and repairs of all types of moving partitions.

We pride ourselves in giving a personal service with engineering expertise, whether it be on projects for a village/church hall, primary school, nursery, small business or for household names such as Rolls Royce, NatWest, Nissan, Scottish Water or Nottingham Forest FC, all of whom are using our systems.

- **Concertina folding partitions**
- **Flat panel moving walls**
- **Glass folding partitions**
- **Service & maintenance**



www.beehive-partitions.com | enquiries@beehive-partitions.com | +44 (0)1609 883 882

Rose
collection

THIS IS NOT TIMBER

(BUT YOU CAN'T TELL FROM LOOKING)

Meet Ultimate Rose

Ultimate Rose is a timber-alternative sash window that has all the elegance and charm of period sash windows, complemented by modern performance and energy efficiency.

Say goodbye to constant maintenance and repainting of your windows, instead say hello to a conservation-grade sash window that's hand crafted to achieve the finest detail, even up close.

Boasting 40 years of manufacturing experience built into every sash, Ultimate Rose is designed to keep your home warm in the winter, cool in the summer and secure and quiet all year round.

The most authentic uPVC sash window meticulously crafted by the UK's leading manufacturer.

**Classic style. Modern Performance.
Tradition redefined.**



Scan to find out more

sashwindowsuk.com/tellmemore

ST LEONARDS CHURCH COMMUNITY CONNECTION

Architects: John Puttick Associates

John Puttick Associates has completed the transformative refurbishment of St Leonard's Church in Hove, delivering an adaptable community resource marked by a striking new timber porch. The glulam-pitched roofed extension symbolizes a distinct, open welcome to the congregation and wider local community. Located on New Church Road in Hove, the Grade-II listed Anglican church was originally built in the 13th century, and the existing Victorian building features a textural facade of knapped flint across its double-nave form.

St Leonard's remained in operation with a dedicated yet dwindling congregation despite not having a resident vicar for four years, but faced closure in 2016. In contrast, the busy and bustling St Peter's Church in nearby Brighton with its large, youthful congregation was outgrowing the available facilities. A vision to reimagine St Leonard's as a versatile community asset led to a partnership between the church council, the Diocese of Chichester, and St Peter's. This partnership saw 30 of St Peter's community members join Vicar Ali Marshall in working alongside the smaller existing traditional congregation to revitalize St Leonard's. John Puttick Associates won an invited competition to realize the community's vision in 2020, and funding for the construction was secured from the Church of England in 2021.

The brief sought an adaptable and functional community space suited to a family-oriented, contemporary congregation. Key requirements included the need for a heating system and audiovisual integration to support the lively, musical weekend services, while still respecting the historic character and fabric of the listed building. A smaller, more traditional worship space was also needed. John Puttick Associates has reimaged entry to the church as a gesture of welcome to all in the local neighborhood. The architects have relocated the entrance from the south elevation where a gated porch was often



"The added flexibility to the church, and the dedicated work of Vicar Ali Marshall and his team has ensured that the building will be holistically used, for both worship and community growth, for many years to come. The new timber porch encapsulates the welcoming nature of the church with the slatted oak gates opening wide to receive all." -**Martin Aberson, Senior Architect**



perceived to be closed, to the west, a more traditional location for the church entrance that unlocked the interior arrangement. The new entrance takes the form of a 4.5-metre tall glulam porch topped by a standing seam zinc roof. The new entrance features two sets of timber slatted doors that open towards the street and rear of the site, enhancing a sense of permeability and inviting the community in. The interiors are renewed with a versatile floor plan designed for multi-use. St Leonard's features two distinct naves; one smaller wing to the south adjacent to the larger northern nave, delineated by original stone arches. John Puttick Associates integrated glass doors within the archways to offer flexible settings depending on the community's needs. The main nave is dedicated to contemporary

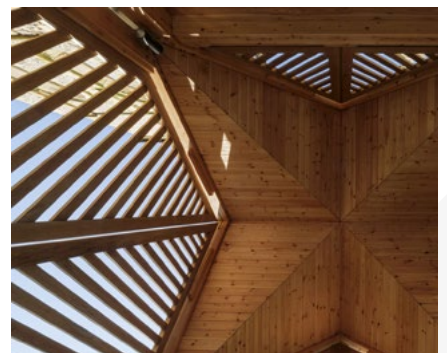
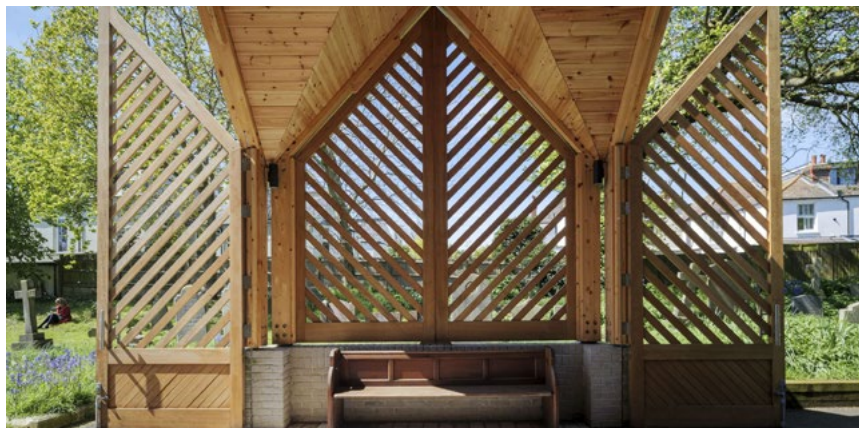
family services and live music, meanwhile, the traditional nave retains the original encaustic tiled floor, honoring the church's heritage.



Associates has advocated for the decarbonization of the church where possible, opting for a new air source heat pump to warm St Leonard's throughout the cooler months. A new underfloor heating system is installed on top of the existing original parquet floor throughout the church so as not to disturb the historic material. The system is covered to step the floor level up by 15 centimeters, whilst new ramps at both the new porch and supporting south entrance overcome level access issues. St Leonard's appeal is extended beyond solely church-goers with the addition of a café in the smaller nave. The counter is crafted from repurposed choir stalls and the continuation of original herringbone patterns found in the church's tiling in the new joinery reflects a wider commitment to continuing St Leonard's historic character. Herringbone timber cladding covers the new dividing screens, and a new toilet pod and is evident in the herringbone oak slats of the timber porch.

In addition to interior works, external landscaping improvements include the renewal of pathways, a new outdoor seating space, and the installation of new outdoor path lights for better accessibility and visibility. Festoon lights alongside the new porch brighten the neighborhood so effectively that St Leonard's Church is now colloquially known as the "bright and light church". John Puttick Associates' thoughtful and sensitive approach marks the most substantial intervention at the site for many years. The new enhancements revitalize St Leonard's Church for its shifting congregation, duly considered for the needs of a 21st-century demographic. These ecclesiastical improvements, rooted in context, ensure the church remains a vibrant heart of the local community.

■ www.johnputtickassociates.com



'Working with John and Martin at John Puttick Associates has been so fantastic from start to finish. It's been incredible to see the process through from concept to reality and how well it has translated throughout the refurbishment process. It looks stunning but also really works practically for our now bustling church and community events. Reactions from both people who knew the church before and also those coming in for the first time are of wonder and appreciation of the best of old and new elements of the building looking great together. The new porch is a wonderful new feature welcoming in the community new and old and providing a real external wow factor for the building as well.' -**Ali Marshall, Associate Vicar at St Leonard's Hove Church**



FLUSHING NON-FLUSHABLE ITEMS - THE IMPACT ON INFRASTRUCTURE

As architects, builders, and property developers, understanding the implications of flushing non-flushable items is crucial for sustainable design and construction. Flushing inappropriate products can lead to severe consequences for our sewer systems, wastewater treatment facilities, and septic systems, ultimately impacting the health of our environment and communities.

Increasing Strain on Sewer and Drainage Systems

Despite significant investments in infrastructure, our sewer and drainage systems are becoming increasingly strained. The growing population contributes to a rising volume of waste entering these systems. Research by the Marine Conservation Society reveals that between 1.5 billion and 2 billion sanitary items—including tampons, nappies, and wipes—are flushed each year. This alarming statistic highlights the urgent need for solutions that can alleviate pressure on our infrastructure.

Understanding the Challenge of Non-Flushable Items

Unlike toilet paper, which is designed to break down easily, non-flushable items are made to absorb moisture. When introduced into sewer systems, these products swell and become entangled with fats, oils, and grease (FOG), resulting in blockages that can compromise system efficiency. The consequences of this issue can be significant:



•Increased Maintenance Costs:

Frequent blockages lead to costly repairs and emergency clean-up efforts, placing a financial burden on municipalities and taxpayers.

•**Environmental Hazards:** Untreated sewage can spill into streets and waterways, causing environmental degradation and health risks for local communities.

•**Infrastructure Integrity:** The ongoing need for maintenance can result in long-term damage to sewer systems, necessitating more extensive and expensive repairs.

Introducing Enviro Eco Traps: A Solution for Sustainable Development

Having tested numerous designs during product development, Enviro Eco Traps offer innovative solutions to mitigate the negative impact of flushing non-flushable sanitary items. Enviro Eco Traps are designed to sit in the drain run and intercept non-flushable sanitary items. The trap holds these items within the box or tube so it can be emptied and the waste disposed of as and when required.

The Trap Box: Ideal for new builds, this device is installed within an inspection chamber in the drainage run. Its filtration captures non-flushable items while allowing natural waste and toilet paper to flow through smoothly, preventing blockages and reducing sewage spill risks. By incorporating these traps into your designs, you can enhance the sustainability and efficiency of your projects.



The Trap Tube: Designed for retrofitting in existing drainage systems, the Trap Tube fits easily into current inspection chambers. Its tapered design allows for effortless removal and replacement. Like the Trap Box, it filters drainage flow to ensure only biodegradable waste is able to pass through, making it a practical and effective solution.

Building a Sustainable Future

By integrating Enviro Eco Traps into your architectural and development projects, you can play a vital role in reducing environmental and infrastructural challenges associated with flushing inappropriate items. These traps not only safeguard sewer systems but also contribute to cleaner waterways and healthier communities. As professionals in the field, it's essential to promote awareness about proper flushing practices to ensure the longevity and efficiency of our sanitation systems, ultimately leading to a more sustainable future.

Sales@enviroecowallpanels.com

01227 286410

Flushing products other than toilet paper can have serious consequences for our sewers, wastewater treatment plants, and septic systems. These failures can lead to the discharge of raw and partially treated sewage into our coastal watersheds, resulting in the pollution of local waterways and posing a risk to public health.

ENVIRO ECO TRAPS CAN HELP STOP THIS DAMAGE



Enviro Eco Traps are designed to sit in the drain run and intercept non-flushable sanitary items. The trap holds these items within the box or tube so it can be emptied and the waste disposed of as and when required.

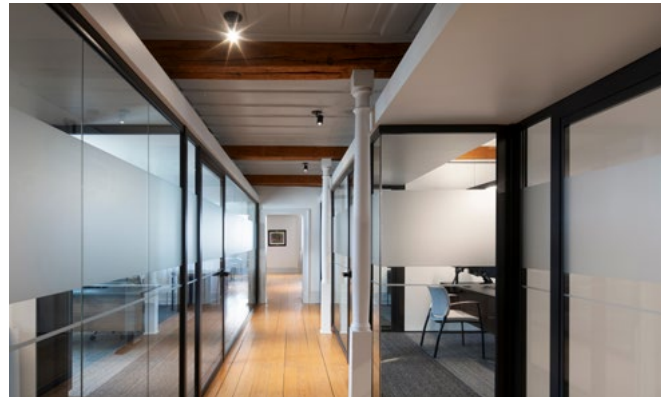
THE TRAP BOX

Designed with new-builds in mind, the Enviro Eco Trap box is installed inside an inspection chamber within the drain run. The filtering action of the trap intercepts and holds any items that should not have been flushed but allows natural waste and toilet paper to pass through as normal.



THE TRAP TUBE

Accessed via an existing inspection chamber, the trap tube is ideal for retro-fitting in drainage systems that are already live. The trap tube has a tapered shape so it is easily removed and replaced using the supplied cable or rod. As with the trap box, the trap tube filters the drainage flow, allowing only natural waste and toilet paper to pass through. Both the trap box and the trap tube are easy to empty.



MAISON CHEVALIER:

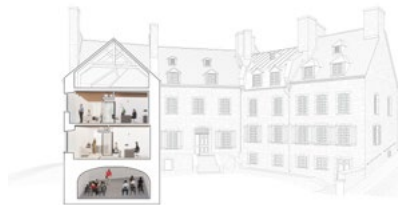
A Thoughtful Rehabilitation Embracing Historical Essence

Anne Carrier architecture

Since its construction in 1752, Maison Jean-Baptiste-Chevalier has been transformed many times over the ages. It was initially an important place of trade for New France due to its strategic location near the river. It was subsequently transformed into a renowned hotel during the 19th century, and in more recent years was used as a cultural space affiliated with the museum. In 1956, its restoration marked the start of the ambitious reconstitution project of Place-Royale, a fictive reconstitution with a stylistic and historic approach of the French regime in Quebec City.

In 2021, Maison Chevalier was acquired with the intent to ensure the perennity of the building and the site by establishing administrative offices on the top floors, while maintaining the vaults accessible to the public. This concern for preserving the historic building through its values and architecture immediately compelled the team of Anne Carrier architecture to work on the project with a minimalist architectural approach that relies on respect and highlights the different interior elements of interest.

The interior design strategy aims to preserve the authenticity, integrity, and richness of the historic elements. Thus, the decision to have an open floor plan allows for the elements of historic interest to be seen from every point of view



by both employees and visitors. The circulation along the exterior walls, with the desks judiciously positioned away from the walls, enables natural light to enter evenly in all the different spaces.

This rehabilitation project's concept is reversibility, which means the interior configuration can be easily changed to its original state with the help of movable interior walls. This allows for greater flexibility while preserving the existing construction system of the building. Long, floating bands were used to hide the mechanical elements and to facilitate the installation of the new interior walls, while obtaining a harmonious, esthetic, and respectful historic integration. These floating ceiling bands offer intimate working spaces with better acoustics, while expressing, with simplicity, the connection between the old and the new.

The outdated elements of Maison Chevalier that had no historic value were replaced with new elements chosen for their integration, functionality, durability, and design aesthetic. The building's exterior was



left untouched during the project, although future maintenance work is planned to maintain its existing appearance. The discreet and respectful rehabilitation approach offered new interior spaces adapted to today's needs, while preserving the spirit of this special place dating back to the early 17th century.

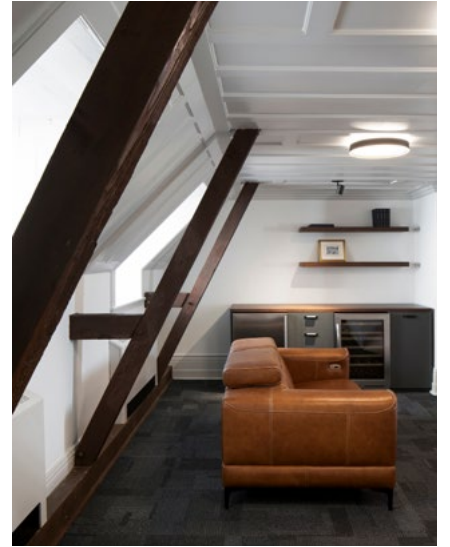




•Architecture team:
 Patricia Pronovost, architect; Mathieu St-Amant, architect; Martin L'Hébreux, architect; Anne Carrier, architect; Andrée-Ève Gaudreault, architect; Jean-Philippe Bélanger, Tech., B. Arch.

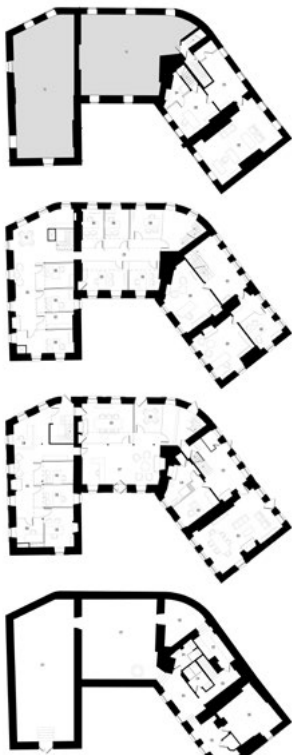
•General contractor:
 Construction Yannick Arbour

•Photographer: Adrien Williams



•Project: Maison Chevalier
 •Location: Québec, QC, Canada
 •Architects: Anne Carrier architecture (AC/a)

■ www.annecarrier.com



THE IMPORTANCE OF THERMALLY ISOLATING BUILDING ENVELOPES

In the UK, a staggering 45% of all carbon emissions stem from the building environment, with domestic buildings contributing 27% alone. In the pursuit of a more sustainable future, integrating energy efficient solutions into building structures is paramount.

There are a number of important areas within a building envelope where thermal bridges can occur, which are often overlooked in the initial design phase. These are significant culprits of energy loss, and often compromise the overall efficiency of a building. To combat this, innovative solutions like Armatherm's thermal breaks play a crucial role.

So, how do thermal breaks work?

These cutting-edge materials can be seamlessly integrated into various structural connections within a building, from foundations to roofs. Incorporating thermal breaks, particularly in balcony and column base applications, yields significant reductions in energy transfer, resulting

in a cost-effective and reliable solution.

What are the benefits?

By identifying and addressing potential thermal bridging points during the initial design phase, architects, specifiers and developers can make informed decisions that optimise energy efficiency. The reality is, however, they're often overlooked and not specified, which can render other costly energy-saving solutions redundant.

Failure to prioritise thermal breaks can hinder achieving desirable R values necessary for sustainable construction. Such oversight not only jeopardises compliance with regulations like the 2008 Climate Change Act, but also undermines broader sustainability goals.

Thermal breaks emerge as one of the most significant investments which can be made during a major construction project, contributing substantially to the creation of



sustainable, energy efficient structures that align with regulatory standards, and of future environmental targets.

For guidance on selecting the most suitable thermal break materials for your project, visit www.armatherm.co.uk.

Thermal Bridging Solutions



Armatherm™ is one of the leading suppliers of thermal break materials for the construction industry. Our goal is to provide architects, engineers, and contractors with the knowledge and materials to effectively address thermal bridging issues. Armatherm™ thermal break materials have low thermal conductivity, high strength, and have been designed and tested to carry the loads, and prevent thermal bridging.



www.armatherm.co.uk



WOODBURNING STOVES

Suppliers of top quality, cast iron & steel wood burning & multi fuel stoves for over 30 years.

All our Stoves comply with Eco Design 2022 emissions and efficiency requirements for clean burning (BS/EN13240)

BUCKINGHAM II 5.1KW

£299.00 exc.VAT £358.80 inc.VAT

A

VICTORIA II 5.1KW

£399.00 exc.VAT £478.80 inc.VAT

A

A+

£289.00 exc.VAT £346.80 inc.VAT

BARREL III 5kW

A

£269.00 exc.VAT £322.80 inc.VAT

CARLTON III 4.2kW

A

£589.00 exc.VAT £706.80 inc.VAT

REGAL IV 7.9kW

A

£429.00 exc.VAT £514.80 inc.VAT

BLAKENEY 5.5kW

A+

£599.00 exc.VAT £718.80 inc.VAT

DORCHESTER 4.9kW

STAINLESS STEEL 1200W ASH VACUUM CLEANER

£65.99 inc.VAT

- 12 Litre capacity
- Built in 1200W motor
- Compact and easy to use

A

£779.00 exc.VAT £934.80 inc.VAT

PEMBROKE II 11.9kW

A

£399.00 exc.VAT £478.80 inc.VAT

WENTWORTH II 5kW

A+

£469.00 exc.VAT £562.80 inc.VAT

GLOUCESTER 5kW

BIG CHOICE OF BRITISH MADE FLUES

LOG SPLITTERS FROM ONLY £298.80 INC VAT



SEE THE RANGE ONLINE OR IN OUR 64 STORES

IN-STORE
SUPERSTORES NATIONWIDE

TELESALES
0115 956 5555

ONLINE
machinemart.co.uk

RADIATOR OUTLET: YOUR PROJECT'S BEST-KEPT SECRET

AFFORDABLE RADIATORS, BATHROOMS AND UNDERFLOOR HEATING

Transforming spaces with warmth and style since 2015, Radiator Outlet brings you top-quality radiators without the premium price tag. Our journey began with a mission to provide top-notch radiators at prices that won't break the bank, and today, we're proud to expand our offerings to include stunning bathroom suites and efficient underfloor heating systems. With over 16,000 glowing 5-star reviews, our commitment to excellence is evident in every product we offer.

RADIATORS: COSY AND DURABLE

We believe in no compromises. Our radiators are manufactured to the highest standards, using premium materials to ensure durability, impressive heat output and sleek finishes. Even in the face of rising global costs, we've kept our promise of delivering quality products, providing you with reliable and stylish radiators.

Our direct manufacturing and warehousing capabilities mean you won't experience stocking issues, ensuring prompt delivery. Plus, our hassle-free 10-year warranty gives you peace of mind, knowing that any concerns will be addressed directly by us.

BATHROOMS: AN OASIS ON A BUDGET

We've taken our years of expertise in providing quality radiators and applied it to creating affordable, stylish bathrooms. From complete bathroom suites to individual pieces including freestanding bathtubs and elegant basins, we've got everything you need to transform your bathroom into a luxurious retreat.



Each product in our bathroom range is selected for its quality, style and affordability, ensuring you get the best value for your money. Whether you're renovating or building from scratch, Radiator Outlet's bathroom collection offers you the same high standards you've come to expect from our radiators.

UNDERFLOOR HEATING: COMFORT FROM THE GROUND UP

Experience the luxury of warm floors with Toasty Toes by Radiator Outlet. Our affordable underfloor heating kits include electric and water-based systems, designed to suit your space. Whether you need a low-wattage solution for a small area or a high-wattage system for larger spaces, you'll find the perfect fit to keep your feet toasty.

Our range also includes essential accessories including thermostats, insulation and valves, making installation and operation seamless.

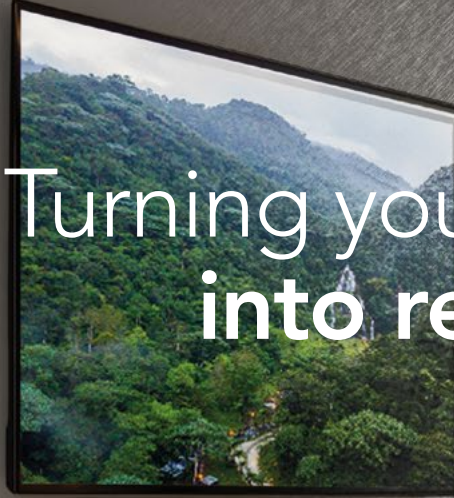
Transform your space with Radiator Outlet, where quality, style and affordability come together and discover why we're the trusted choice for all your home comfort needs.

Radiator Outlet - The home of affordable comfort.

www.radiatoroutlet.co.uk



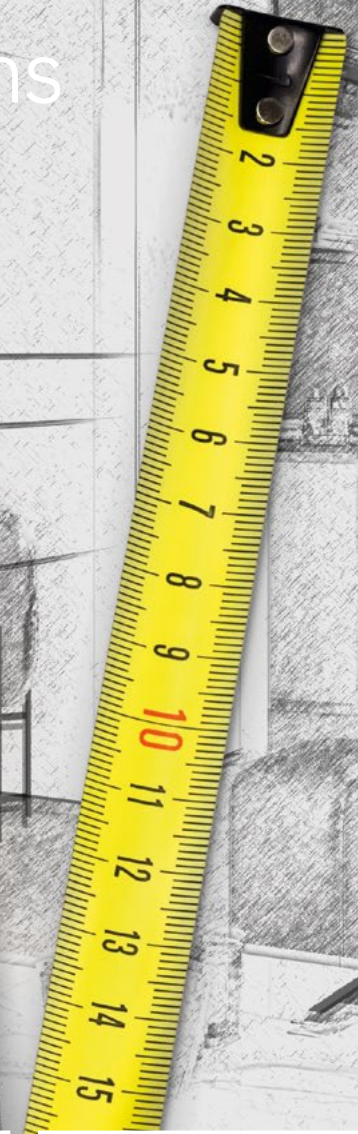
Turning your dreams into reality.



1800

400

(1800c Deep)



ELECTRIC



GAS



WOOD BURNING



MULTI-FUEL



Scan, click or call to find out more



✉ marketing@charltonandjenrick.co.uk

🌐 charltonandjenrick.co.uk

☎ 01952 200 444



AIR DIFFUSERS LTD

The UK's number one distributor of Ventmann Gypsum Air Diffusers.



GYPSUM DIFFUSERS "SQUARE"

SQUARE diffusers are so much more than just another air distributor. They are minimalist interior elements that will accentuate the precise lines and rigid angles of an interior design. Toss aside the ventilation grille. You will no longer have to think about where to hide it, because from now on, air distributors are an integral part of the interior design.



GYPSUM DIFFUSERS "PCIRCLE"

The most versatile and popular unit, the Performance Circle model, is a frameless diffuser suitable for virtually any room or interior design style. It was nominated with a prestigious Red Dot Design Award 2023. The product features a specific airflow that offers exceptional comfort, along with the sustainability, performance and aesthetic versatility that are hallmarks of every Ventmann product. The Circle Coanda's design solves a specific challenge where the physics of creating air diffusers that create a "Coanda Effect" were at odds with the aesthetic requirements of designers and architects.



"PCIRCLE"

OUR PURPOSE

Each of our products is so much more than just another vent diffuser. They are minimalist interior elements that can be integrated discreetly into any interior, or used to accentuate the precise lines and rigid angles of your design.

-They are innovative- our diffusers are the first on the market to be made from our special gypsum composite, so they can be frameless and fit any contemporary design. Our philosophy is that modern interiors need modern vents.

-They are sustainable- Gypsum is one of the most sustainable materials in use. Furthermore, we follow an environmentally-friendly production process and use ecological packaging.

-They are elegant- we want our diffusers to maintain the integrity of the interior design, completely blending in with wall and ceiling surfaces.



"SQUARE"

GYPSUM DIFFUSERS "PLINE"

The Ventmann PERFORMANCE LINE vent diffuser combines elegant and adaptable design features with a specially engineered airflow that uses the Coanda effect, making it ideal for air conditioning. This is a model that empowers you to craft distinctive interior features or seamlessly conceal the diffusers, while minimizing direct airflow onto users.



"PLINE"

www.airdiffusers.co.uk



Sustainability is the future of design, and at Air Diffusers, we're proud to be part of the movement. Our frameless gypsum diffusers not only deliver unmatched elegance but are also made with eco-conscious materials. Let's build a greener tomorrow, one elegant interior at a time. Join us in redefining heating ventilation and air conditioning design for the modern age.

Introducing, Air Diffusers Ltd. The UK's number one distributor of Ventmann Gypsum Air Diffusers. We are based in Northamptonshire and hold the entire range in stock ready to deliver to your premises or project site. Contact us for technical support, help with sizing and specifying, prices and discounts and lead times. Let us be your number one partner and help you elevate your project. Contact us at Sales@airdiffusers.co.uk

Unit 77
Enterprise Centre
Michael Way
Warth Parkway
Raunds
NN9 6GR



red dot winner 2023

01933 697471

www.airdiffusers.co.uk



The Radiator Centre, Tuba White

WINTER-READY HOMES:

A guide to selecting the best radiator for any space.

With more choice than ever before, Nick Duggan, MD of The Radiator Centre, talks us through some of the considerations when choosing how best to heat our homes

What types of radiators are available?

From designer styles and art radiators to traditional cast iron models and the very latest electric designs, the radiator market offers consumers a plethora of choice. Most designs now come in an extensive range of colours and finishes, so there will be something to complement every home.

To work out what size you need for your home start by calculating the heat output required for your room, which can be done by using an online heat calculator. The results will show an amount in either watts or BTUs (BTU stands for British Thermal Unit which is the standard heat measurement used in the UK).

All radiators will state an output in either watts, BTUs or both. By knowing how much heat each



The Radiator Centre, Dune

radiator will emit, you can now find the best one to efficiently heat each room based on your earlier heat calculation.

If you install a radiator that is too

small for the room, the energy required to heat the room will be greater than the radiator can produce, meaning the room will always be too cold. If your room is on the cold side of the house,



The Radiator Centre, DOTS

draughty and poorly insulated, a larger radiator will be required to heat it to the same standard as a similar sized room that is facing south, has efficiently insulated cavity walls and triple glazing. In larger rooms, you may even need more than one radiator. If you install a radiator that's too big for the room, you'll be producing too much heat, so constantly having to turn it down, which could mean you'll be wasting energy.

What are the features and benefits of plumbed vs electric radiators?

Choosing between plumbed and electric radiators depends on your specific needs, existing infrastructure and preferences for control and energy efficiency. Sometimes it is not possible to plumb in a radiator due to the cost of laying new pipe work or getting gas to a new boiler. Having electric radiators might prove to be a sensible alternative.

The key consideration when choosing an electric radiator should be its controllability, as this will ultimately be the thing that determines how efficient you can make it run. Having 24/7 timers allow you set precise on/off times so you have the heat just when you need it. Most electric radiators will come with an override button if you should then need to turn them on outside the usual schedule. Many will also come with apps that allow you to see what is working in real time.



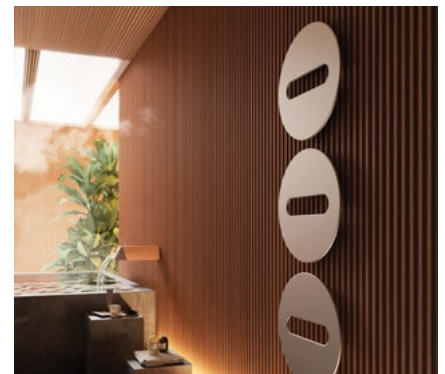
The Radiator Centre, Tonda

'Holiday' functions are also a bonus, allowing the heating to come on if the temperature drops too low, in order to protect water pipes, etc while you are away. This is more cost-effective than leaving the heating on full for the duration of a two week winter holiday.

Since 2018, all electric radiators should also have 'open window' sensors. These detect drafts from doors and windows and will shut the radiator down until the opening is closed. This means no more heat being lost out of a window in the middle of winter.

There is a definite growth in interest for electric radiators for a number of reasons and they are becoming a lot more controllable and energy efficient as a result. Many flats, especially in and around London, rely on old, large and inefficient storage heaters. These can now be swapped out for something smaller and more stylish. Likewise, properties which have tended to use oil in the past are switching to electric as the fluctuations in running costs can be less severe.

Plumbed radiators on the other hand, can be more energy-efficient, especially when connected to a modern, energy-efficient boiler or heat pump. They spread heat evenly and are well-suited to larger homes. Typically controlled via



The Radiator Centre, Sfere

a central thermostat, this allows for the regulation of temperature across multiple radiators in the home, which may also be done via an app with the correct set up. Although the initial installation may be higher, running costs can be lower, especially with a well-maintained boiler or heat pump, leading to savings over time. Many homeowners also prefer the look of plumbed radiators, especially in older homes where they match the traditional style.

What are the design options for your home's radiators?

Whether you favour traditional styles or more cutting edge designs, you will find some beautiful options available which will make a stylish addition to the home. Radiators are no longer just functional white boxes, many of today's designs come in a variety of shapes and sizes, not to mention every colour of the rainbow. Indeed, with some of the latest art radiators, you'd be forgiven for not realising it was a radiator at all.

■ www.theradiatorcentre.com

What are the sustainability considerations?

Sustainability is a huge factor for everyone and in the heating sector there are some great energy-efficient designs that are now on the market, with more being introduced all the time. One of the recent models, the Soho, features a remarkable water saving of approximately 80% less than a traditional tubular multi-column radiator. When you have less water in the system it means less energy is required to heat it up, saving on cost as well as energy consumption.

With the rise of consumers using heat pumps, we are now also seeing many more models coming through which are compatible with these low temperature systems. To truly maximise the efficiency of a heat pump system, it's vital that consumers choose the right complementary technology. Fan convectors are a good choice as they are specifically designed to work at between 30C and 45C, whilst still delivering the required heat output.



The Radiator Centre, Tessuto 03



The Radiator Centre, Milwaukee,



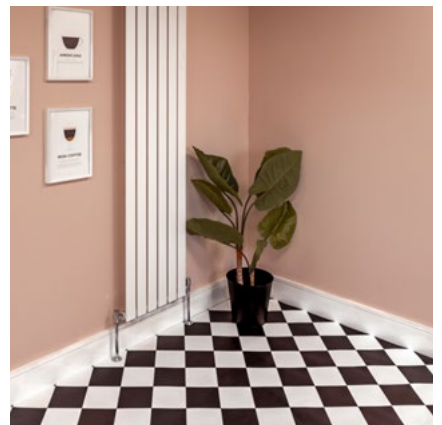
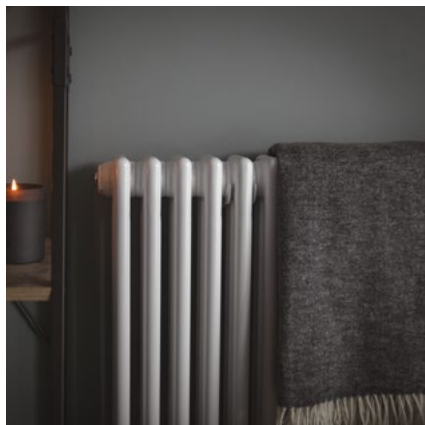
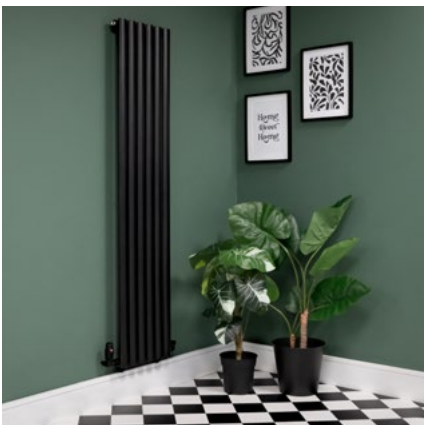
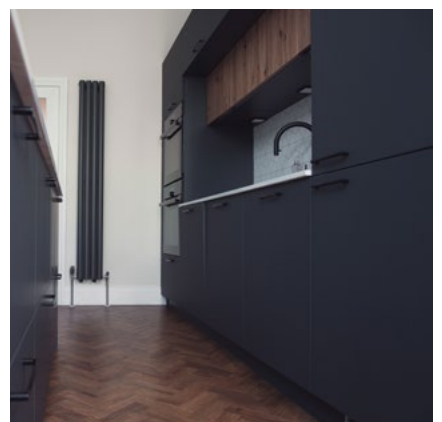
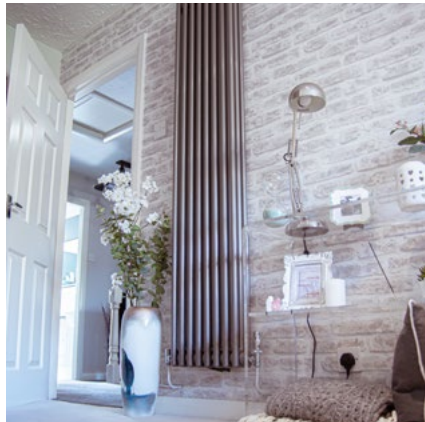
The Radiator Centre, Sofi,



The Radiator Centre, Oni Electric 01

radiatoroutlet

THE HOME OF AFFORDABLE RADIATORS



For more information, please contact us.



Phone: 0845 860 5908

Website: www.radiatoroutlet.co.uk

Email: hello@radiatoroutlet.co.uk

THE OLD TOWN HALL'S GROUND FLOOR INTERIOR

The new interior of the Old Town Hall's ground floor comprises distinctly contemporary elements that are strictly functional and, thanks to their toned-down visuals, do not compete with the historic architecture. The new elements are designed to age as little as possible, both technically and aesthetically.



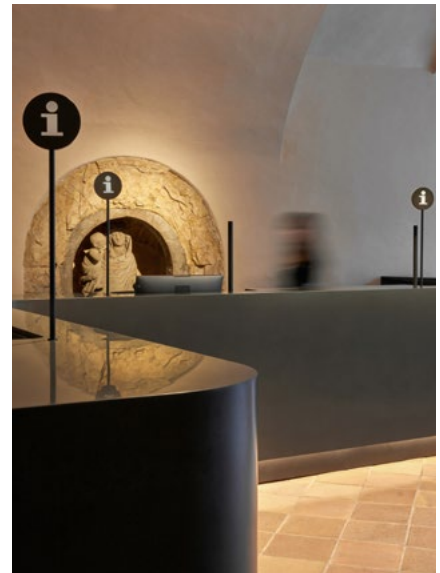
The City of Prague together with the Prague City Tourism opened a new tourist facility on the renovated ground floor of the Old Town Hall - a symbol of the overall cultivation of tourism in the Czech capital. In addition to tourist information services and guided tours, it also offers the first brick-and-mortar souvenir shop with cultivated souvenirs exclusively from local creators.

Studio Olgoj Chorchoj continued on the SGL's structural reconstruction project of the Old Town Hall's ground floor with the design of interior elements - built-in and freestanding furniture, lighting, and wayfinding elements.

The concept of interior design is essentially the materialization of simple function with a highly toned-down formal aspect. The newly designed elements are not intended to compete with historical architecture; they are purely meant to serve their purpose and are therefore very simple, constructed with an emphasis on durability and precisely executed details.



The interior design project of a part of the historic Old Town Hall ground floor includes the allocation of ticket sales, an information centre, a gift shop, and facilities for visitors and staff. The aim was to create a new unit for each of these functions that would meet the current visitors' needs and create a healthy and inspiring work environment. The layout and morphology of the new elements take into account the natural movement in space and do not disrupt the original architectural details of the Old Town Hall - the



walls breathe, the elements touch them only minimally, and do not cover anything.

The main aesthetic concept is the clear differentiation of the new elements, reflected in the choice of materials, colours, morphology, and placement within the historic environment. The appropriate choice of materials allows the elements to have rounded shapes without visible joints, with the motif of rounded corners permeating throughout the interior - on benches, pedestals, showcases, and counters, including their details.

The lighting system was designed to allow the Gothic vaults, workstations, and items displayed in the showcases to be illuminated without the need for any new interventions in the historic masonry. It also allows for variability in the future, when some elements may be relocated.



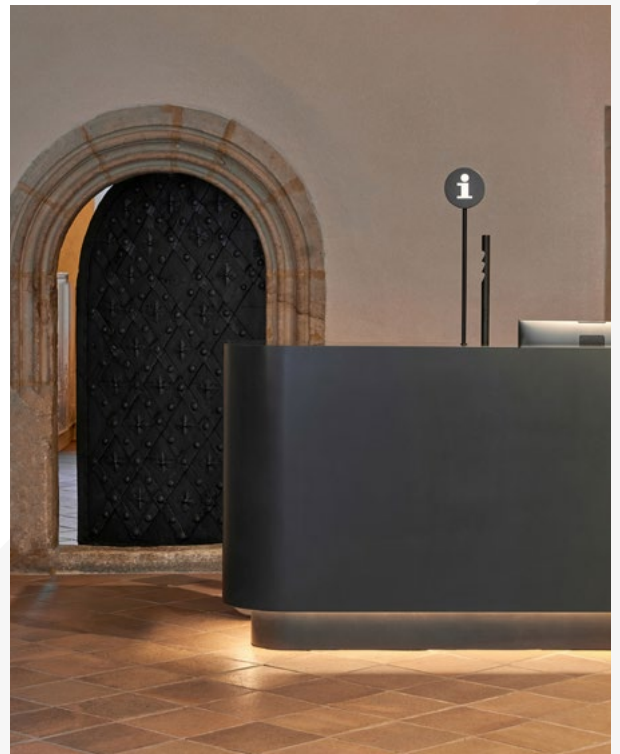
Studio Olgoj Chorchoj is located in Prague on Liben Island in a listed studio built in 1930 originally for sculptor Jan Lauda.

It was founded in 1990 by Michal Froněk and Jan Nemeček while they were still studying at the Academy of Fine Arts in Prague. The studio's scope of work ranges from glass, lighting, jewellery, industrial design, furniture, and urban furniture design to interior design, architecture, and urban planning. Over the years, it has been awarded numerous domestic and foreign accolades. Their works are represented in private collections and prominent museums such as the National Gallery, the Museum of Decorative Arts in Prague, the Moravian Gallery in Brno, the Metropolitan Museum of Art in New York, and the Corning Museum of Glass, among others. Their work is published in both regional and international professional journals and special publications.

In architecture, the studio primarily focuses on new buildings and reconstructions of family villas, revitalisation of historical buildings, and design of interiors and exhibitions. Over the years, the studio has collaborated with many architects such as Daniel Paterko, Ondřej Kopecný, Jan Rosický, Štěpán Abt, Juraj Smolen, Tereza Kenížová, Jan Šrámek, Katerina Hroncová, Martin Klanica, Jan Krejčí, Mariana Hanková, Lucie Englová, The Hong Nhung, and others.

Since 2000, Michal Froněk and Jan Nemeček have been leading the Product Design Studio at the Academy of Arts, Architecture and Design in Prague.

■ www.olgojchorchoj.cz



Photos: Honza Zima, www.honzazima.com

VICAIMA PRESENT ANOTHER DIMENSION FOR INTERIORS WITH DEKORDOR® 3D

Popular for over a decade, the Dekordor® 3D range from Vicaima has long been a first choice with specifiers of living and working spaces.

With its attractive textural and hard-wearing surface, ideal for contemporary surroundings as well as demanding locations; this competitively priced interior timber door or door kit has much to commend it for both modern private dwellings and social environments. Now, with innovation and inspiration firmly in mind, the range has been re-imagined for a new generation of specifiers, with no less than 15 tonal and textural options, making flexible design and performance, available to suit a wider range of project budgets.

While colours like the original horizontal Grey remain as popular today as it always was, a fresh palette has been introduced to satisfy modern trends and encompassing both vertical and horizontal textured faces. For those who seek the neutrality of crisp and light colours, Artic and Silver Oak blend perfectly with busy surroundings and make excellent use of light in small spaces. Conversely, where rich warm tones would be ideal and needed to emulate otherwise expensive alternatives, Chocolate, Urban and light Walnut provide the perfect solution. However, if the desire is to embrace a more monochrome look, new Carbon Black, Grey Oak or Cloud White could provide the answer.

Dekordor® 3D is not just about door appearance either. It can be provided in the full gambit of performance solutions from Vicaima. Manufactured with fire



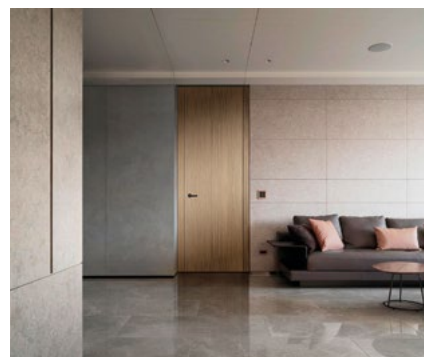
Dekordor® 3D is not just about door appearance either. It can be provided in the full gambit of performance solutions from Vicaima.



(whether FD30 or FD60), security (including dual scope and SBD accreditation) and acoustic certification (ranging from 34 to 45dB) the range can be supplied as part of a matching door assembly and with associated joinery such as skirting and wall panels. Furthermore, with flexible design options such as factory glazing, decorative grooves and inlays are also possible. In short tailored to your project needs, whatever they may be.

For more information about the Vicaima Dekordor® 3D Range take a closer look now by downloading the brochure or request a colour sample of your chosen finish by request to marketing@vicaima.com

■ www.vicaima.com



vicaima

MADEIRAS SGPS, S.A.

 Sustainable Door Solutions

Together we build the Future



vicaima.com

Scan to know more



GENTLEMAN STORE

By ORA

Building Refurbishment - triarchitekti

We have been working with the investor for a long time. From the generous intention of extending the apartment building, he finally decided to start with the implementation of extending the commercial space to the basement and the structural preparation for the future extension.

The main part of our work therefore remains invisible, hidden under neutral high-quality finishing materials. And that's the way it should be. We are all the more pleased that the commercial space was leased by

an enlightened client who had the store designed by ORA.

Our proposal consists primarily of transforming the original basement space into a commercial space. We are leaving the grand vaulted rooms unplastered. The darker surfaces of the brick vaults and stone walls are complemented by a new light-coloured floor



made of polished concrete, separated from the old walls by a distinctive joint. The ground floor undergoes only a facelift, with the most significant intervention being the new terrazzo staircase that connects the basement to the ground floor. We carefully searched for the location of the staircase and managed to choose a place that naturally connects to the entrance. We found a balance between an economical and comfortable solution and the least possible structural intervention.

The material palette of the spaces is moderated to be as versatile and timeless as possible.



Photography- BoysPlayNice- www.boysplaynice.com

Gentleman Store Interior Design - ORA

We were approached to design the interior of a boutique in a space that had just been very well refurbished. Therefore, there was no need to create an elaborate backdrop or to mask anything. We are not turning away from the existing architecture, on the contrary, we are stepping towards it. We are not overshadowing the space, but complementing it naturally. At the same time, the design deals with the issue of selling quality goods. It is not so empty that it resembles a gallery and over-fetishizes individual pieces, nor is it so crowded that the products merge into one mass. We are looking for a balance between these two positions.



'We want customers to enjoy exploring the interior as much as we enjoyed designing it. We let the geek in us show through. We're more interested in how a thing is constructed than how it looks at first glance. We want the interior to encourage exploration at a second glance.'



Craftsmanship

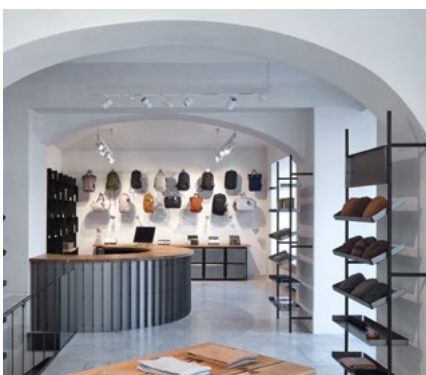
The store focuses on quality predominantly British men's fashion. The interior therefore avoids ostentation, instead aiming for asceticism. The designed furnishings are simple and transparent, but are perfectly crafted in detail and use only a few high-quality materials. All substitutes are avoided. We want the interior to be inviting to touch, to feel solid.

Furniture

Stable craftsman tables made from solid oak planks with defects. The tables reflect the craftsmanship. They are distinctive solitaires perched on the floor.

Lightweight hangers represent lightness of construction. Although they are subtle, they can carry a large amount of clothes. However, they are here not for decoration, but for utility. They are balanced by coarse stones that were removed from the house during the renovation. We discovered them in the backyard where the landlord kept them.

Folded pieces of sheet metal serve as shelves. Simple raw material, simple repetitive motif. We leave most of the shelves open, there's no need to hide the products.



■ [www. o-r-a.cz](http://www.o-r-a.cz)

■ [www. triarchitekti.cz](http://www.triarchitekti.cz)

A GREENER SOLUTION TO DOOR DROP

Make your campaigns truly memorable

Looking to elevate your public consultation game? Look no further than Letterbox. With over 36 years of experience under their belt, they're the go-to experts for public consultations, whether it's for massive construction projects or giving your swanky design hub a well-deserved spotlight.

In the world of effective public consultations, door drop and direct mail campaigns are the unsung heroes. They're not just informative tools; they're the bridges that connect you with your community.

Construction projects often intersect with communities, making the relationship with local residents vital. Door drop or direct mail campaigns can provide comprehensive project information to affected households and businesses. This proactive approach empowers residents with knowledge, setting the stage for informed discussions and decision-making.

Real-World Impact

Imagine a recent regeneration project. Through measured door drop campaigns, construction authorities shared project timelines, alternate routes, and contact details for inquiries. The result? An engaged and informed community leads to smoother construction operations, fewer complaints, and a more positive perception of the project.

Tangible Connection

Communicating with local residents and businesses at the planning stage through to the various phases of a build will go a long way in developing positive relationships in the community and avoiding potential delays.

Door drop campaigns are irreplaceable assets for



Letterbox has been at the forefront of introducing new technologies to the distribution industry like real-time tracking and accurate mapping.

public consultations during construction projects. Where community understanding and cooperation are essential, these campaigns shine. By effectively informing and engaging communities, sharing real-world success stories, and leveraging the tangible power of physical marketing materials, door drop campaigns can redefine how construction projects connect with the public.

Innovators

Letterbox has been at the forefront of introducing new technologies to the distribution industry like real-time tracking and accurate mapping. Graeme Davidson, Business Development Manager at Letterbox said, "We've been continually innovating with the latest technologies to ensure that every client has the highest level of impact throughout the community. We introduced real-

time tracking to this industry so that we could prove the benefits of door drop to our clients and it also means we don't miss a letterbox."

Letterbox can offer design, print, direct mail, door drop, static handouts, and installation of posters and display boards to ensure your public consultation engages stakeholders and the public. They can count Crest Nicholson, Talyor Wimpey, Berkeley Homes, HS2, and Skanska among their clients.

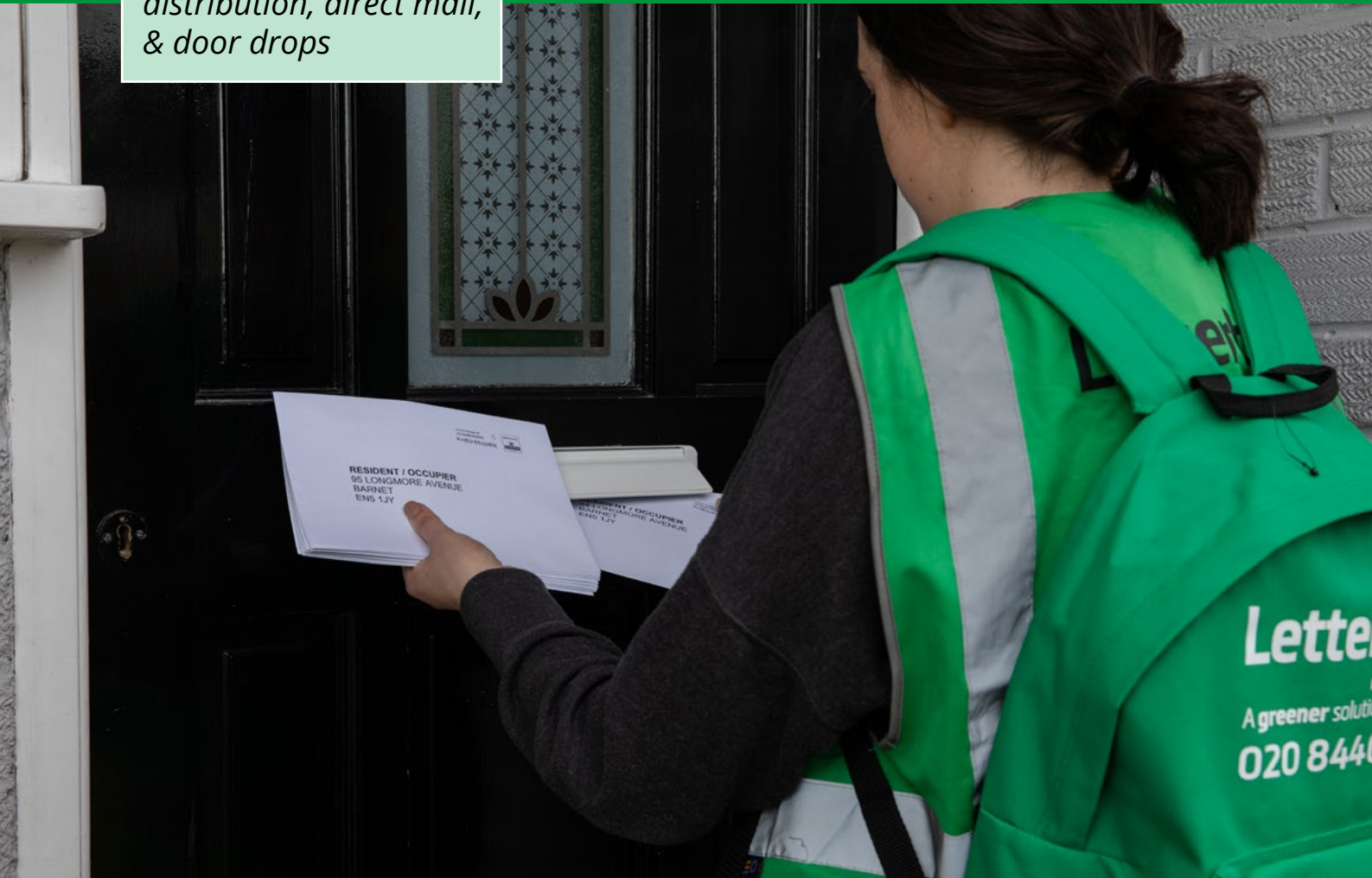
■ For more details on how Letterbox can help you connect with your key stakeholders, visit www.letterboxdistribution.com.

Letterbox
distribution.com

Letterbox

distribution.com

We specialise in leaflet distribution, direct mail, & door drops



ARE YOU A CONSIDERATE BUILDER...

Communicating with local residents and businesses both at the planning stage through to the various phases of a build will go a long way in developing positive relationships in the community and avoiding potential delays.

Letterbox offers design, print, direct mail, door drop, static handouts, and installation of posters and display boards to ensure your Public Consultation engages Stakeholders and the Public.

With 36 years' experience in delivering for Architects, Planners, Developers, Builders, Utilities, and the Construction Industry you know you are in safe hands with Letterbox.

For a no-obligation quote

Email graeme@letterboxdistribution.com

Or call us on 020 8440 0400

www.letterboxdistribution.com



Photo credit: Studio CRBN

THE EARNSCLIFFE HOUSE

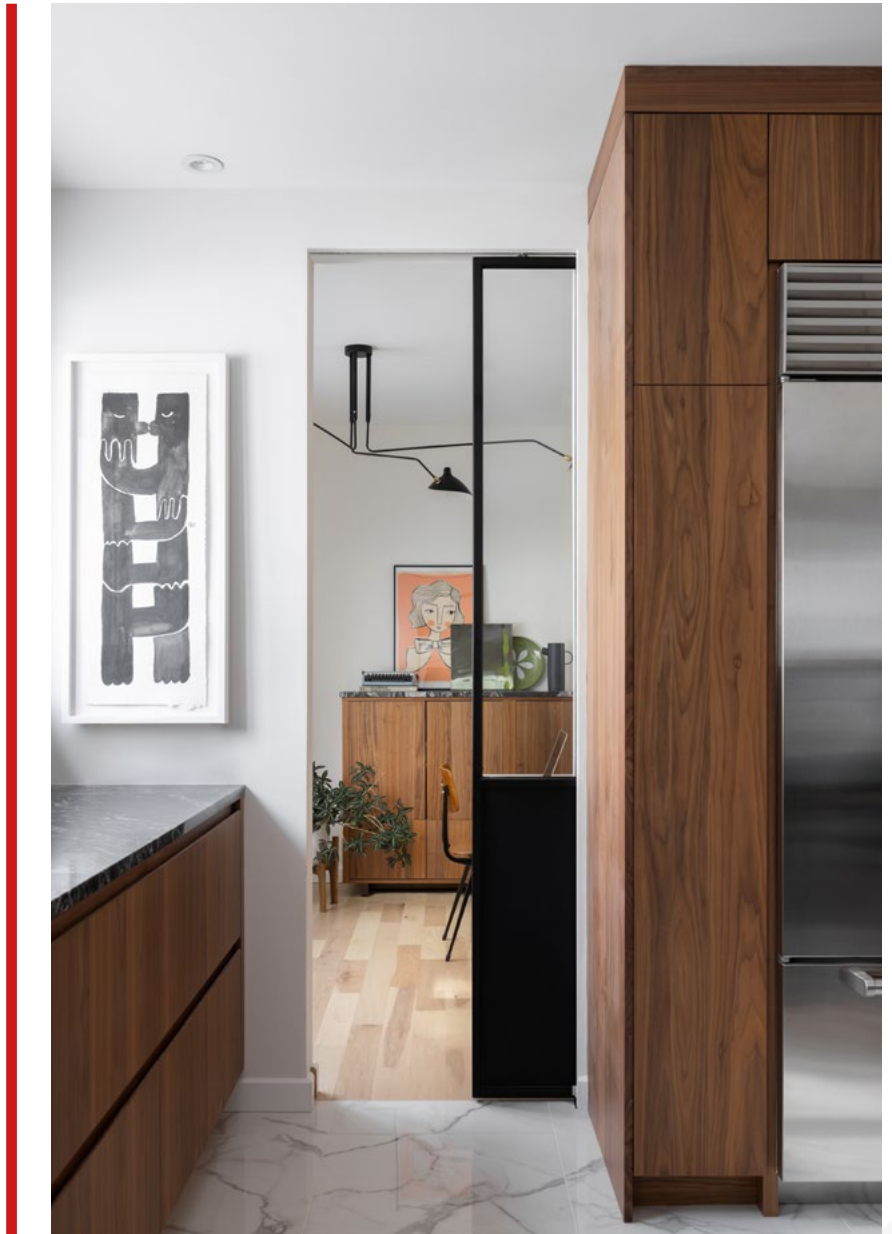
Complete renovation of a house.

Architects: Le Borgne Rizk Architecture

A delicate transformation of a duplex into a single-family home, by Le Borgne Rizk Architecture. It is a metamorphosis that transcends space, creating open places bathed in light, soothing retreats where beauty inspires familial harmonies. Intended to house an intergenerational family of two children and a grandparent, this dwelling celebrates the cohabitation of generations.

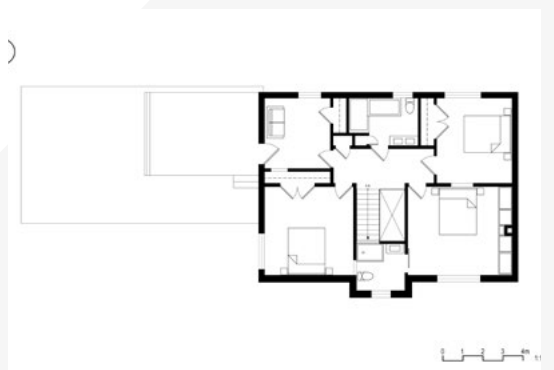
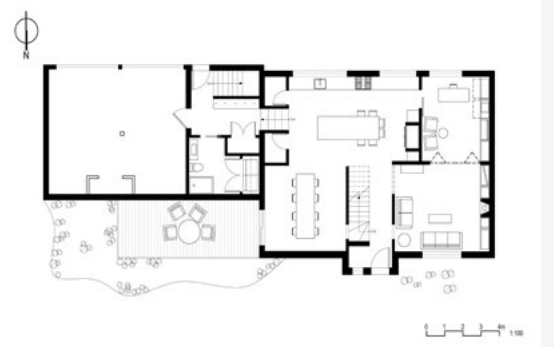
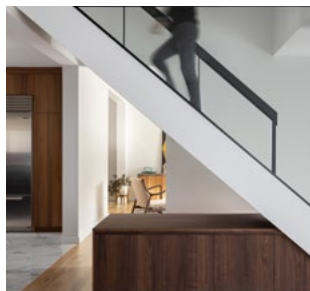
On the ground floor, communal spaces intertwine around a vast functional kitchen, gracefully opening to the dining room and family room. A dedicated workspace emerges, weaving a tapestry between professional and family life. Upstairs, two bathrooms surround the four bedrooms, each articulating around a double height in front of the staircase. This staircase, both robust and refined, becomes a junction between functionality and aesthetics, a living tableau.

Elegantly suspended on the wall, this wooden staircase reveals concealed drawers, integrating daily life into its organized movement. The chocolate-toned wooden steps offer subtle warmth to this open space, while the wall-mounted metal structure, discreetly concealed behind a triangular glass partition, welcomes the dance of natural light. The glass guardrail, crowned with wood, provides translucent security, illuminated by a soft glow under each step.



Every detail of this staircase, from the junctions of the risers to the borders of the entrance frame, reveals meticulous craftsmanship and careful harmony. Symbolizing articulation between the floors, it embodies daily movement, the interaction of inhabitants, and the fusion of intimate and public spaces. This same wooden articulation becomes the path through which life manifests and circulates.

To unify the two floors into a cohesive entity, a double height opens to a hall on the second floor, creating open spaces flooded with natural light. It is a spatial quality without equal, a symphony of light and space that gives this dwelling a singular aura.



HYPERION TILES

NEW GUIDE:

How to transform your home with floor tiles.

Award-winning tile and flooring specialist Hyperion Tiles has carefully curated a new guide, which helps homeowners, designers, architects and builders choose the right tiles for every project. Check out the blog on our website, which invites you to discover our newest launches and expert insight on how to choose floor tiles for every room in a home, from revamping a bathroom and renovating a kitchen to transforming a hallway or updating a bedroom.

Key highlights in this guide include:-

Why floor tiles make such a good choice: From durability and versatility to compatibility, find out why tiles are so beneficial underfoot

How to pick your tile material: Top tips on different materials and why they may work for you from ceramic and porcelain to natural stone, quartz and marble

Choosing your patterns and designs: Our expert advice on what to look for and how to make your choice

Finishes and textures: How to pick the right finish and why textures can play an important part in your design process

Maintenance: Follow our handy hints on how to care for your tiles to make them look good for longer

■ www.Hyperiontiles.co.uk



Above: Our new Abbey Fountains matt ceramic floor tiles, £3.25 per tile, 19.9 x 19.9 by 1cm, look super-stylish in a Victorian-inspired pattern. Made in ceramic, they provide a striking alternative to traditional encaustic versions and they can be used on floors and walls



Above: If you really want to make a statement in your house, one way to do this is with top quality floor tiles - our new Sculpture Grande Porcelain Ceppo tiles, £240 per box (2 tiles), could be perfect. If you're looking for on-trend, extra-large format tiles and a striking marble effect, these tick both boxes

“

“When you choose floor tiles, they are an investment, which must stand the test of time. On our blog, homeowners are given every option you need to consider from material, pattern and colour options to finish, size and maintenance tips. So, you can make informed decisions on what you want to buy to improve your lifestyle and enhance your design preferences.” - **Director Richard Skeoch**

With more than 15,000 bespoke floor and wall tiles in a variety of patterns, colours, shapes and sizes, our portfolio also includes luxury wall-coverings, distinctive bathroom pieces, from mesmerising mirrors to stylish storage, and paint. To check out our product portfolio and for more expert advice from our director Richard Skeoch, read our latest blog on floor tiles here and visit our website here.

Would you like to feature large lifestyle or cut-out images or receive more information on any of our products? Our director, Richard Skeoch, is also available for exclusive interviews on tiles trends, new products and more. Please email marketing@hyperiontiles.net

■ www.Hyperiontiles.co.uk

Wall beds - maximising and multi-purposing our precious living space ex stock in UK and around the globe

Wallbed Systems Ltd. offer an exclusive and versatile range of high-quality wall bed hardware designs. Designed for hotel rooms, micro-apartments, small bedrooms, a home office and student accommodation, our wall beds provide hybrid living, working, studying, sleeping and storage areas, fully maximising the space available.

Wall beds have never been easier to order, build and install and have a tiny footprint. All models include our robust bed counterbalance mechanism (SBLM) and are complete with contract level finishes and strength, all using our safe and reliable spring system, needing only finger-tip effort.

The NeXT Bed™, Alpha Bed™, Beta DIY Kit, and Studio Desk by Wallbed Systems Ltd. provide



huge scope for rethinking the way we live, work and sleep. The Alpha Bed™ utilises rolled section steel for strengthening the wallbed front panel and includes supports to ensure

maximum support whilst never compromising on balance nor comfort. Our Studio Desk™, compatible with the Alpha Bed™, functions as either a work surface and integrates directly into the wallbed. Desktop items remain undisturbed while the bed is up, or in use. The Beta DIY kit has been developed specially for cabinet makers, and other trade professionals who require an affordable, compact, safe, reliable, and easy to operate system to produce any size of professional wallbed.

A wide range of UK / EU / US sizes are in stock and available in any sized project volumes worldwide. Talk to us today about our range of wall bed mechanisms and associated products.

T +44 208 704 5796 | M +44 7780 661958 | jeremy.waller@wallbedsystems.co.uk | www.wallbedsystems.co.uk

Wallbeds were never this easy to order, build and install, so we created

next bed™

Instant solutions with or without cabinet, installed on day of arrival, and in stock now.

Tiny footprint, fingertip control. Safe spring support system. Available in most countries around the world – just add the creativity to make the space you need.

Free advice and ideas/designs



Wallbed Systems Ltd

T +44 208 704 5796 | M +44 7780 661958
jeremy.waller@wallbedsystems.co.uk | www.wallbedsystems.co.uk

WBS  **WALLBED SYSTEMS**
Let's build a Wallbed together

January Furniture Show

19 - 22 January 2025 • NEC Birmingham

Register
NOW



Crafted.
Curated.
Connected.



Hooker Furnishings

Building the future of furniture.
Together.

thefurnitureshows.com



JANUARY FURNITURE SHOW 2025:

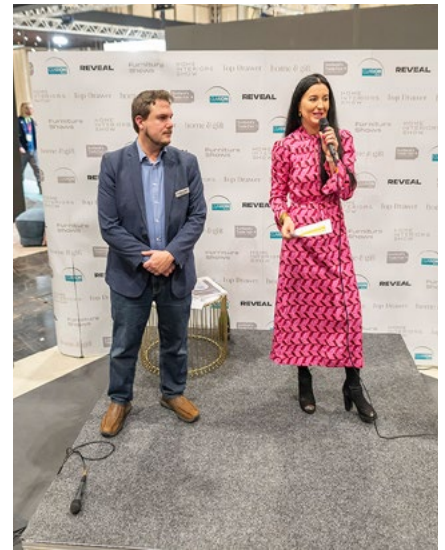
The Essential Event for Furniture Professionals

Get ready for the most anticipated event in the furniture calendar! The January Furniture Show (JFS) returns to the NEC Birmingham from 19-22 January 2025, offering a dynamic platform where business meets opportunity. As the first and only major global event taking place in January, JFS will once again solidify its position as the meeting place for the industry at the start of Q1. JFS provides a premier destination to discover top brands, new products, emerging trends, and, most importantly, the opportunity to make those invaluable face-to-face connections. With over 500 leading UK and international

brands set to exhibit, 35% of which are new to the show, JFS is designed to unite the entire furniture community under one roof for 4 days of sourcing, networking, and business growth.

Set across 4 sectors, Premium Design, Home & Lifestyle, Living, Dining & Cabinet, and Upholstery & Beds, JFS sets the benchmark for exceptional design and innovation. JFS is a must-attend for anyone in the business of furniture, homewares, interior accessories, and lifestyle products. With over 50,000+ products and collections showcased across the four day event, sourcing couldn't be easier.

Discover innovation and excellence from an impressive lineup of exhibitors, many of which are launching collections exclusively at JFS including the likes of Hooker Furnishings, Qualita, G-Plan, Baker Furniture, Fama, Maxfurn, Himolla, Scatter Box, La-Z-Boy, Buoyant Upholstery, Hill Interiors, Parker Knoll, Qualita, ACTONA GROUP, Skovby, Highgrove Beds, Ashley Manor Upholstery, Trampoline, Widdop & Co., Divan Sahab, Harmony Furnishings, Viva Sleep by Sitting Pretty, Grace & Favour Interiors and many more!



JFS attracts a global audience, with exhibitors and visitors from over 35 countries gathering in Birmingham for more than just product sourcing—networking opportunities are unparalleled. Connect with top retailers, brand owners, designers, and manufacturers at the show's various networking events. The Furniture Awards, in partnership with Furniture News and sponsored by WorldFirst, kicks off on Sunday at 5:30pm at the Social Studio in Hall 2, followed by the Show Party at the Champagne Bar and Happy Hour on Monday at 5:30pm. Additionally, the Women in Furniture Network will host their 'Celebrate Success' event, featuring an engaging panel discussion with Sarah Bianchi (CEO, Arighi Bianchi), Victoria Darnell (International Furniture Designer, Hooker Furnishings), Katy Hawes (Founder, Grace & Favour), and Gisela Lancaster (Head of Buying, Sofology). These events provide a unique space for professionals to connect, share insights, and inspire each other—don't miss out!

Kickstart your January at the first major furniture event of 2025 and find everything you need for a commercially successful year.

Register now - www.thefurnitureshows.com



UNWIND IN BESPOKE LUXURY

Inspired by our heritage, designed for the modern bedroom. The Iconic Collection features floating beds with unparalleled comfort and exclusive fabrics. Handmade in Sweden

Join the unwinding world of Swedish luxury beds by becoming a Carpe Diem Beds dealer.

Please get in touch with Oliver Bowen at oliver.bowen@carpediembeds.com

January Furniture Show, stand 1-D30.





CARPE DIEM BEDS
SWEDISH LUXURY

15 WIGMORE STREET | LONDON W1U 1P | MARYLEBONE@CARPEDIEMBEDS.CO.UK | +44 (0) 20 3982 3252 | CARPEDIEMBEDS.CO.UK
COPENHAGEN GOTHENBURG LONDON SEOUL STOCKHOLM ZURICH AND OTHER FINE LOCATIONS

VALSPAR TRADE

Transforms grade II listed properties bringing them into the modern day.

Situated off Castle Square in Lincoln, Bailgate consists of a series of narrow streets that connect the city's medieval Cathedral to the Roman-built Newport Arch, a local landmark. Given the storied history of the area, it's a very desirable tourist and living location, located just outside of Lincoln city centre.

It is this that drew Jam-Jar Developments to the opportunity of purchasing and renovating the three properties. Jared Newman, Owner at Jam-Jar Developments, said: "We originally booked to view only one of the homes on Bailgate. However, after seeing the three next to each other and how beautiful the area was, we knew that we had to buy all of them.

"We started with number 31, which features an amazing, exposed stone wall that we believe dates back to the 3rd century."

As part of their plans for the homes, 31 and 33 were to be used as holiday lets for visitors to the area, while 32 was to be put on the market for private sale. With two of the properties intended for private rental usage, able to accommodate up to eight guests each, it was important that the interior finishes were durable and easy to clean.

Jared explained further: "With this in mind, we chose to use Valspar Trade Contract Matt and Tough Matt throughout all three properties to provide a long-lasting finish that would be easy to maintain. Given the holiday let market, we knew there would be the potential for scuff marks to be left on the walls, meaning that we needed a paint that would both stand up to the test and allow for quick cleaning.



"Valspar Trade was the perfect fit. We've used it for years on our other properties and so knew how well it performs in terms of durability. We've always found the coverage to be fantastic and it adheres brilliantly in very few coats, ensuring each tin goes a long way."



When it came to the interior design element of the renovations, Jared looked to use a range of different colours: "When it comes to choosing the colours and tones, I tend to follow what is on-trend and what we feel best fits the individual space. In this case, we knew we wanted something warm, that didn't overpower the properties existing aesthetic and history. To this end, we had the

paint mixed to Shetland Sweater, Summer Grey and Navy Bean for throughout all three homes. While they are all grey hues, the touch of stone helps to reflect light throughout the spaces, while also not looking too clinical."

For some of the more complex substrates on the exterior of the house, Jared needed a specialist solution, saying: "We also used



Valspar Trade's Direct to Wood & Metal and Masonry Smooth emulsions. The exterior paint range was ideal for some of the wooden finishes on the backs of the houses, where we used Valspar Trade combined Knot Block Wood Primer & Undercoat underneath to ensure a consistent finish. Then, for some of the tougher exterior finishes of the homes, like the windows, we used Masonry Smooth which we had colour matched to another shade we liked.

"This product is great, being tough and able to withstand any adverse weather without cracking or peeling. It's not often that you find a supplier that produces an exterior eggshell product, but Valspar Trade's is brilliant and worked well across the outside of each of the homes, so we knew we'd get a quality finish."

Renovation works began in October 2023, with 33 Bailgate completed in July 2024. All three properties have been well received, with 32 Bailgate already sold and the other two homes receiving positive reviews from guests.



For a refurbishment of three Grade II listed properties in Lincoln's historic Bailgate area to a series of modern new homes, Valspar Trade's Contract Matt and Direct to Wood & Metal paint were used, amongst others, by property developers, Jam-Jar Developments.

Find out more about Valspar Trade, here:
www.valspartrade.co.uk

THE PREPARATION GROUP

Heritage Projects

When it comes to heritage restoration, every detail matters. Preserving the authenticity of an historical building requires not only skilled craftsmanship but also the right equipment. At The Preparation Group, we understand that the tools we use are just as important as the expertise of our team. Whether it's a delicate removal of old materials or ensuring that new ones integrate seamlessly, selecting the right equipment is crucial for maintaining the integrity of the structure and its original design.

Restoring a heritage site often involves working with materials that are no longer in common use. Using specialized equipment ensures that these materials are handled carefully, preventing any damage or degradation to the building. Our advanced tools allow for precise work that respects both the history of the site and the need for modern safety standards.

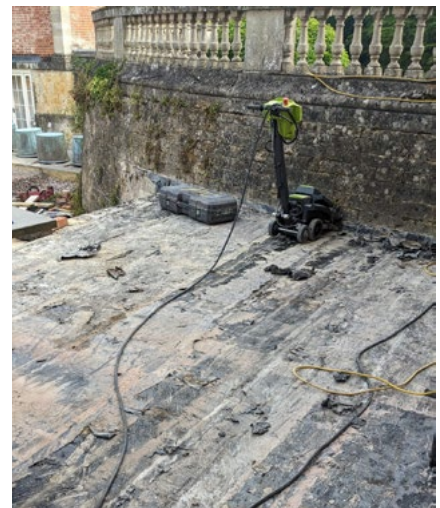
Efficiency is also key in heritage restoration. With the right tools, we can streamline the process, reducing both time and labour costs while achieving high-quality results. For instance, when we were tasked with restoring a porch area that had suffered water damage from a failed waterproofing system, our team employed a range of electric-powered surface preparation tools to remove the old materials safely and efficiently. Initially the waterproof system was uplifted using a self-propelled walk behind multistripper which left behind residue of the system on the substrate. The next step in the process was the use of the PPC250 Grinder, paired with the PPCM450 Longopac Industrial Vacuum. This step ensured the surface was clean and smooth, ready for a new waterproof membrane, while

hand grinders provided the perfect finish for edge details.

Above all, our focus is on sustainability and safety. We work with equipment designed to reduce waste, minimize environmental impact, and ensure a safe working environment. Heritage restoration is about more than just repairs—it's about honouring the past while ensuring that these treasures stand the test of time.



At The Preparation Group contracting team, we combine the right tools, expert knowledge, and a dedication to quality to make sure every restoration project is carried out to the highest standard. Whether we're working on large-scale projects or delicate repairs, we're committed to preserving the beauty and history of every site we touch.



We provide personal guidance and professional technical advice for your project borne from over 32 years of contracting services, on the clean, safe removal and preparation of horizontal surfaces.

Get in touch now for advice on your next project

contracting@ppcgroup.co.uk .

the
preparation
group

Preserving history with precision and trusted equipment for heritage projects.

Preparing
architectural
history to stand
the test of time
takes precision
and care - **that's
where we come in.**



At The Preparation Group, we provide the industry-leading tools and expertise to ensure that heritage restoration projects are carried out with care, efficiency, and respect.

From removing delicate materials to preparing surfaces for restoration, our machines are designed to deliver exceptional results while minimising risk to fragile structures. Whether for hire or purchase, our **Wolff Turbo Stripper**, **PPC 250 Grinder** and **PPC M450 Longopac Industrial Vacuum** are a timeless choice for heritage projects of all sizes.

Ready to hire or buy today. Simply call Lesley today on our sales line: **+44 (0)1522 561 460**

Or discover the full fleet of PPC machines and dust control solutions at www.thepreparationgroup.com



Your pet can travel too

Runs on self-supporting rails

Choose a **real lift...** not a stairlift

Over 25,000 Homelifts Installed

Reconnect with your home

Continue to live safely and independently in the home you love, with a Stiltz Homelift. Cost-effective, straightforward installation into a room which suits your lifestyle, carried out by our own expert engineers for added peace of mind.

- Fits into any home
- Quick and easy install
- Economic to use
- Safety as standard
- Quiet as a whisper
- We handle everything

Plugs into a standard socket

Size of a small armchair

Trustpilot **UK-based homelift team today.**

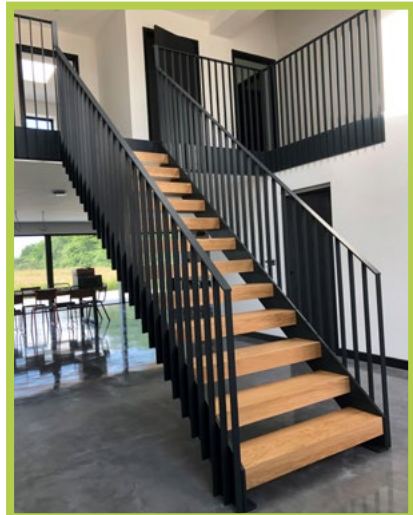
Call: **0808 258 0960**
Visit: **stiltz.co.uk**

Stiltz
Homelifts

PREMIER
LOFT LADDERS

The difference is in the detail

Learn about what makes our products different...
www.premierloftladders.co.uk/difference
0345 9000 195 | sales@premierloftladders.co.uk



EXCEPTIONAL CONTEMPORARY STAIRS

Here at Edge Bespoke, we design, manufacture and site install the highest quality, contemporary staircases for the self build and renovation market. Our staircases are the centre-piece of your forever home, and bring the utmost wow-factor when you open the front door.

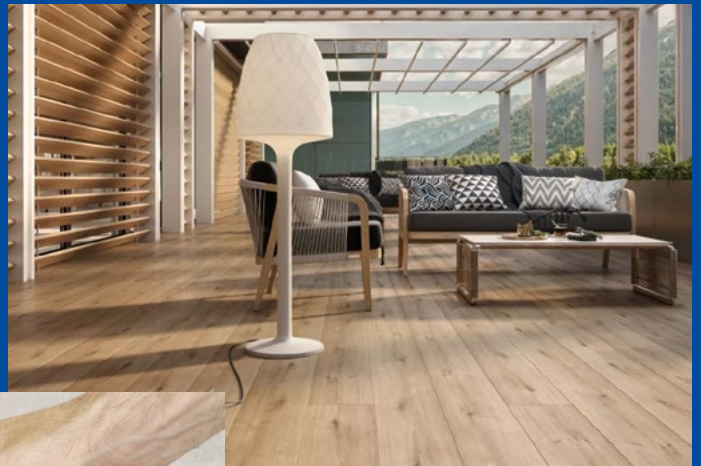
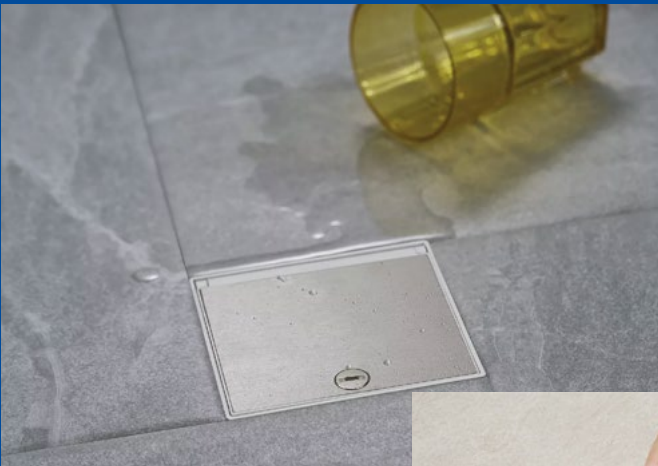
All of our stairs are CAD drawn and designed with the clients involvement, getting away from the traditional look of a timber stairs and bringing steel, wood and glass together. We are a small family run business with over 25yrs of experience and knowledge in the stair manufacturing market.

www.edgebespoke.co.uk | info@edgebespoke.co.uk | 01480 583200

EDGE

Gromtec
europe Ltd.

Available from your
electrical wholesaler



Web: www.simonbox.co.uk
Tel: 0203 2867949

FUTUREBUILD 2025:

Driving sustainability in housebuilding and retrofit

As the construction sector accelerates efforts to meet net-zero goals, Futurebuild 2025, held from 4th to 6th March at Excel London, emerges as the go-to event for professionals tackling challenges in housebuilding and retrofitting. With its focus on sustainability, innovation, and actionable strategies, Futurebuild offers housebuilders and retrofit specialists a unique platform to explore emerging technologies, network with industry leaders, and drive meaningful change in the built environment.

Spotlight on Retrofitting

Central to this year's event is the National Retrofit Conference, a must-attend for those committed to transforming existing housing stock to meet climate commitments. Sponsored by Sustainable Building Services, the three-day conference is split into two segments: expert content curated by the Retrofit Academy CIC on the first two days and sessions led by the National Retrofit Hub on the final day. Key themes include: Scaling Ambitions for Retrofitting, Delivering on Retrofit Promises and Revitalising

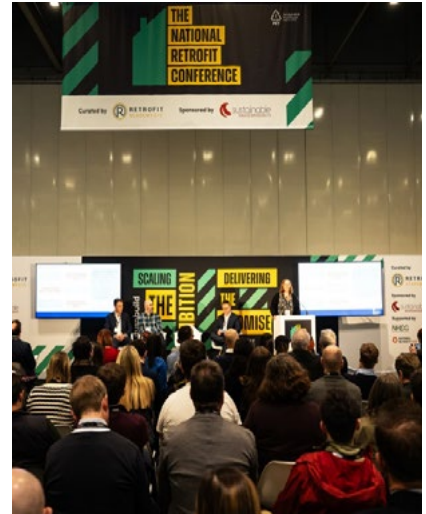
Cities and Regions.

Brand new for 2025, the National Retrofit Expo showcases cutting-edge solutions from top innovators like Parity Projects, E.ON, and Corksol.

The Big Retrofit Challenge

One of the Conference highlights is the Big Retrofit Challenge, hosted in partnership with NHDG and Innovate UK. This live competition showcases six finalists presenting groundbreaking tools, materials, and strategies for overcoming retrofitting barriers.

"Futurebuild 2025 is more than just an exhibition - it's a movement to empower industry professionals. From dynamic discussions in the Futurebuild Arena to the hands-on National Retrofit Expo, we're equipping attendees with the tools to drive positive change." - Event Director Martin Hurn



IMPACT STAGES

Futurebuild 2025 also features five dedicated Impact Stages, each focusing on a critical aspect of sustainability in housebuilding and retrofit:

1. Buildings Impact Stage - Sponsored by HG Matthews

Explore how to bring older homes in line with Passivhaus standards and improve energy efficiency while meeting modern safety and performance standards. Featuring panels from partners such as Passivhaus Trust, BRE, and UKGBC.

2. Materials Impact Stage - Sponsored by Aggregate Industries

Learn how circular economy principles can apply to retrofits, emphasising material passports, supply chain transparency, and waste minimisation. Sessions from organisations like the Sustainable Supply Chain School demonstrate how to achieve material reuse

without compromising on durability.

3. Energy Impact Stage - Sponsored by Kensa

Delve into renewable energy integration, air-source heat pumps, and other technologies essential for decarbonising housing stock. Partners such as the Energy Saving Trust and CIBSE provide insights into managing energy transitions effectively.

4. Placemaking Impact Stage

Go beyond individual buildings to explore how retrofitted homes can contribute to sustainable urban planning. Featuring partners such as Urban Design Group, Landscape Institute and RSPB.

5. FutureX Digital Disruptors Impact Stage - Sponsored by Once Click LCA

Discover the latest construction technologies, such as AI-driven tools and smart energy management

systems, designed to revolutionise both retrofitting and new builds.

THE INNOVATION TRAIL

For housebuilders seeking cutting-edge solutions, the Innovation Trail offers a curated experience of exhibitors pushing the boundaries of sustainable construction. Industry leaders such as AICO and Glen Dimplex Heating & Ventilation will present innovations that address key challenges, from reducing embodied carbon to improving energy efficiency.

Register now and be part of the movement shaping the future of housing and retrofit.:

■ <https://register.visitcloud.com/survey/>

making a

POSITIVE

IMPACT

on the built environment

Introducing Impact - the theme driving Futurebuild 2025.

Impact reflects our shared commitment to positive change in the built environment, with a focus on sustainability and innovation. By visiting Futurebuild 2025, you'll not only experience this transformation but also take part in it.

Discover cutting-edge solutions, connect with industry leaders, and gain the tools and insights to make a meaningful impact in your work and beyond.

Register today



IMPACT NOW

www.futurebuild.co.uk

UNIFOLD® GUTTER LINING SYSTEM

Over 400 metres of Ampteam's Unifold® Gutter lining system was installed on The Royal Albert Hall

Over 400 metres of the Unifold® Gutter lining system was installed on London's iconic venue, The Royal Albert Hall, throughout the summer of 2023.

The Unifold® Gutter Lining System was chosen for its versatility, unfailing ability to replicate existing systems and its long life.

Following a survey by Ampteam personnel, along with Saper Glass Industries Limited, a design solution was provided for the gutters and samples were sent to test fit the Unifold® gutter lining within the gutter cavity, as the throat dimension varied considerably across the profiles.

All runs of the gutter were manufactured to suit the curved nature of the dome which roofs the Hall, and to fit within the minimal throat dimension between the glazing and glazing bars, meaning that bespoke faceted and cranked joint plates were provided so that the new Unifold® lining could follow the profile of the existing gutter.

Full site information was provided including laying sequences, special details and instructions with each delivery of the system.

Ampteam were partnered by Approved Installer, Saper Glass Industries Limited and Faithorn Farrell Timms as contract administrator, and their input and expertise, along with comprehensive discussions throughout, enabled a successful installation of the Unifold® system.

Following installation of the Unifold® every Unifold® gutter run was water tested by flooding the gutter from the top of the run(s) via hose, with additional assistance from the poor weather, and no leaks were detected in any of the installed gutter runs.

Ampteam developed the Unifold® gutter lining system some 20 years ago to provide custom designed solutions to leaking gutter problems.

Unifold® utilises an EPDM membrane at the wet surface for longevity without fear of corrosion, it employs a double sealed joint which can be guaranteed not to leak and the system is engineered to maximise the potential of each and every installation whether it be in conjunction with roof replacement or over sheeting or just to re-line the existing gutter.

It is very often a practical and cost effective solution to consider lining an existing gutter and Unifold® offers exceptional life expectancy and corresponding joint integrity, often far better than the original gutter and following design consideration can often actually increase existing gutter capacity, enlarge outlet orifices and introduce additional outlets with relative ease.

Whenever possible gutters are surveyed by Ampteam personnel. The company actively encourages contractors to use its survey services and this is available throughout the UK and each Unifold solution is designed to provide the client, the building



occupier, with the best possible solution and on occasions this will result in an improvement in performance to the original gutter.

Unifold® is provided with full technical support from advice at the inception of an enquiry through to installation and beyond. Our countywide network of fully trained approved contractors are available to install and provide maintenance inspections and cleaning when required.

Unifold® is installed by approved contractors whose installation teams have been fully trained by Ampteam personnel in house at our training facility and following installation, by an approved contractor, the gutter lining is guaranteed for a period of 30 years.

www.gutterliners.com

Saving for a rainy day...

UNI-DAM, a rainwater management system designed to prevent heavy storm rainfall from overwhelming gutter systems and flooding into buildings.

The system is fixed to the roof and once installed slows and controls the flow of rainfall into the gutter.

For more information or quote please contact our office on 01384 252777.



AMPTeam

Unrivalled excellence in gutter lining technology.
www.gutterliners.com

Imitation is always flattery...

But none can match the excellence of a system that is truly complete

THE UNIFOLD GUTTER LINING SYSTEM.

Having faced and solved every problem experienced in its long life with consummate ease **UNIFOLD** remains THE **GOLD STANDARD** to which others aspire!

UNIFOLD – Unrivalled excellence in Gutter Lining Technology.



AMPTeam

UNIFOLD® Unrivalled excellence in gutter lining technology.
www.gutterliners.com



Vibrant colours and increased comfort

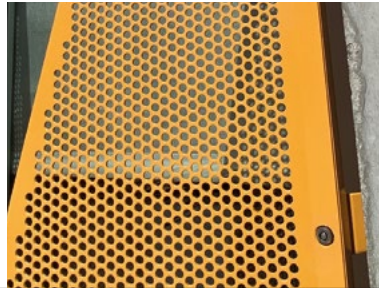
The Lillholm Elementary School outside Stockholm, Sweden, brings more life to a grey industrial area with its premium perforated sunscreens in vibrant colours. In addition, the distinctive sunscreens improve the indoor climate and increase the well-being of both teachers and students.

Close teamwork with architects and contractors has ensured an innovative, perforated solution with respect for aesthetics, the surroundings, and the building's users.

01925 839610 • info.uk@rmig.com • rmigsolutions.com



See case studies
city-emotion.com



Technical characteristics
Size of the project: 450 m²
Material: Aluminium
Pattern: Round holes
Thickness: 3.0 mm
Surface treatment: Powder Coating
Finishing operation: Bending



SINCE 2002,
MANUFACTURERS OF
SILICONES • SEALANTS
PU FOAMS • ADHESIVES
BUILDING CHEMICALS
TILE ADHESIVES & GROUTS
SURFACE TREATMENTS
PLUMBING SOLUTIONS
BITUMENS

Sole distributor of Geo-Fix®
in the UK and Ireland



DOWNLOAD
OUR APP

Head Office: Unit G16,
River Bank Way,
Lowfields Business Park, Elland,
West Yorkshire HX5 9DN
Tel: +44(0)1422 315300



Email: salesuk@bonditgroup.com
www.bonditgroup.com

Need quality weatherproofing materials, available on demand?

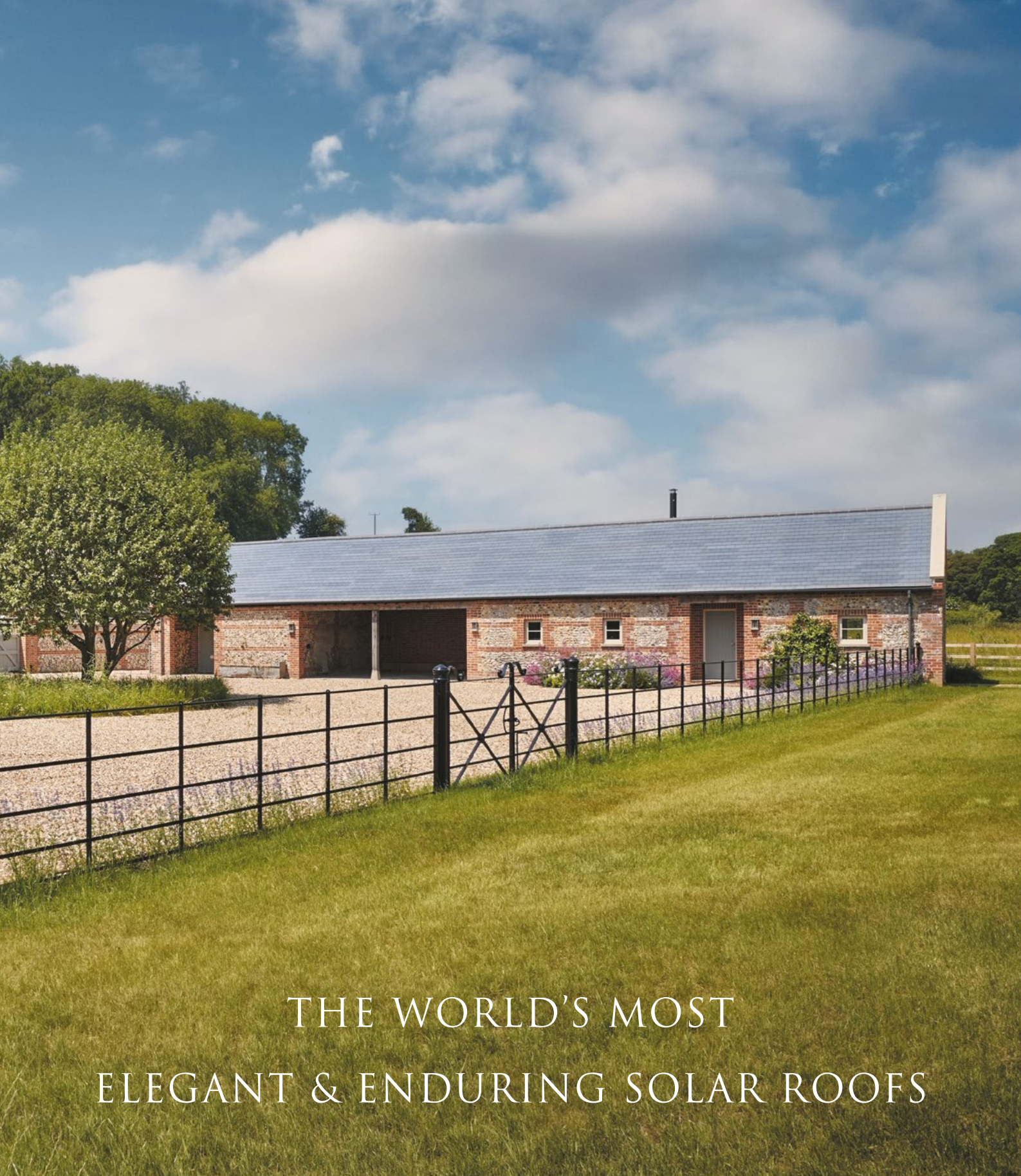
OK, YOU'RE COVERED!

At Bond It we manufacture almost everything we offer, here in the UK. So when you need it we have it in stock and ready to deliver to you. Visit www.bonditgroup.com.



seal it
ONE COAT ROOF SEAL
100% WATERPROOF BARRIER
the flexible cool roof

Hybrid Roof Membrane, waterproof for 25 years
Affected by standing water, more durable than silicone
Thermal properties: reflects heat in summer
Rainsafe in just 15 minutes, no primer required
Can be applied to damp surfaces



THE WORLD'S MOST ELEGANT & ENDURING SOLAR ROOFS

PV Slate by GB-Sol – the integration of tradition and solar innovation with exceptional power generation capacity.

With its discreet, traditional slate appearance, PV Slate is made using only the finest materials ensuring optimal performance and durability.

Blending seamlessly into your new or existing tile roof, PV Slate has huge solar power output and a comprehensive **25 year warranty** on solar performance and waterproofing.

Experience PV Slate - the future of solar power aesthetics, fully installed by GB-Sol.

PV SLATE

by GB-Sol



Discover more at
www.gb-sol.co.uk/products/pvslates
or scan the QR code.

TINMAN STEELS LIMITED

SUPPLIERS OF STEEL ROOFING AND CLADDING SHEETS

SUPPLYING THE UK WITH QUALITY METAL ROOFING AND CLADDING

- FACADE PANELS
- BOX PROFILE
- CORRUGATED PROFILE
- INSULATED PANELS
- CURVED SHEETING
- Z-PURLINS
- C-SECTION
- FIBRE CEMENT SHEETING
- FLASHINGS
- FIXINGS

From supplying our 32/1000 crimp curved Box profile to a bespoke in house designed Facade panel, here at Tinman Steels we always strive to meet all of our customers requirements.



We can supply full packages including bespoke flashings, fixings and sealants to suit your requirements



No job is to big or to small!!

WHY CHOOSE TINMAN STEELS LTD?

- Tinman Steels' attention to service and detail has made us an industry leader within the steel community.
- Domestic, commercial or agricultural projects, we can cater to your needs.
- Most importantly, we can offer cost effective options for all budgets.



01827 286340 | sales@tinmansteelsltd.co.uk | www.tinmansteelsltd.co.uk



BUILDING TRUST



SikaWall®-580 Monorex GM UK

A BBA Certified, through coloured, **Monocouche Render** providing high **weather resistance** and a **breathable finish**.

- Low maintenance
- Durable and long lasting
- Strong, consistent finish
- Made in the UK



For more
information
visit
sika.co.uk
or call
0808 1410 709

Natural Roofing Slate
priced to help YOU win projects

RoofingSlateDirect.com High Quality Slate at Low Prices!

Quick & Easy
Website Ordering

UK Wide Delivery &
UK Technical Support

BS EN 12326-1:2014
to A1, S1, W1 & T1

Good match for
Welsh Slate or Ballachulish Slate
at a much lower price

Try us on your next
slate roof project and
find out what you've been missing!

www.RoofingSlateDirect.com

T : 0333 323 1768

Bring the indoors, outdoors CROCODILE STYLE



Request a
FREE Survey



Call
08000 11 22 34
crocodile.co.uk

Free Fitting*

A Glass Veranda offers a unique extension to your living space, Choose between a solid, open structure with a glass roof, or a Winter Garden with fully glazed sliding doors. All are constructed using powder coated aluminium and are maintenance free. So find out how a bespoke Crocodile Veranda will add style and elegance to your home.

*Subject to terms and conditions.



4.9 Trustscore



Made in the UK


Crocodile
PRODUCTS



CROGIOLO LUME

MARAZZI

Marazzi's most recent research into industrial craftsmanship has led to a rediscovery of the beauty of authentic, colourful, decorated ceramics in collections with a handmade look, created by combining craftsmanship with industrial technology. Crogiolo presents a unique level of quality and aesthetics, reflecting Marazzi's unceasing research and technological innovation, combined with a return to what it is to be human, and the care and attention typical of craftsmanship. These materials lend vibrancy

and a warm, welcoming mood to a space, beyond passing fashions and time. The name Crogiolo is central to the history of Marazzi, since it is the name of the industrial building

where Marazzi was first established in the 1930s, between the railway tracks and the Modena canal, and the place where, in the 1980s, "Il Crogiolo", Marazzi's research and experimentation hub, was founded. It was there that architects, designers, artists and photographers were invited to

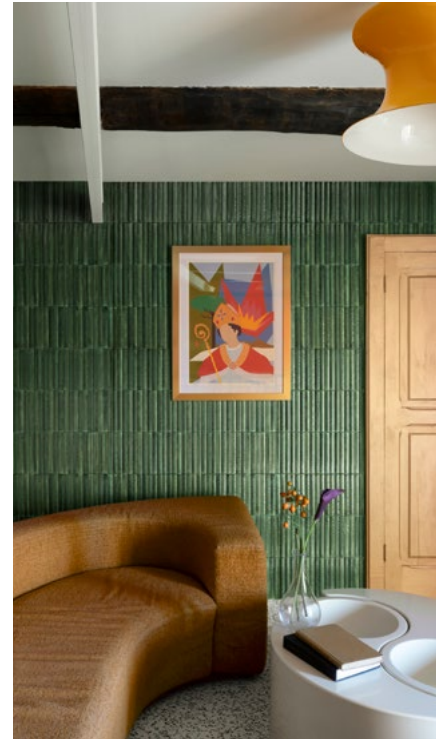
interpret the artistic potential of ceramics with complete freedom, leading to a fertile season of pure research resulting in the Marazzi "Sperimentazioni" series, designer tiles by Roger Capron, Amleto Dalla Costa,

Original Designers, Saruka Nagasawa and Robert Gligorov, with photographs by Luigi Ghirri, Cuchi White and Charles Traub.

■ www.MarazziGroup.com

The "Il Crogiolo" series of booklets documents the brand's history and 112 projects involving new applications and decorative techniques, with illustrations, original sketches, photographs and comments by their designers and ceramicists which are still a source of inspiration for the company's product development today.

This spirit is the inspiration for the new Crogiolo collections, a perfect combination of the love for craftsmanship and authentic ceramics and the continuous research and innovation that have distinguished Marazzi for over eighty years.



LUME

The Lume collection, which reinterprets the beauty of handmade majolica brick tiles in stoneware, has been expanded with four new colours: Bone, Caramel, Emerald and Ocean. These colours combine with the innovative design of the two new 3D structures, Rake and Swing, inspired by the fashion for tiles with a ribbed surface. Available both in these new colours and the six colours already in the range - White, Blue, Green, Greige, Off White and Turquoise - these structures add depth and dynamism to their densely glazed surfaces, extremely glossy and intentionally imperfect, designed to be experienced not only visually, but also by touch. Rake, characterized by a 3D surface that recalls the grooves of grosgrain patterning, features Lume's characteristic dense, imperfect graphics in the relief sections, surrounded by a lighter tone that creates a refined contrast and strongly three-dimensional effect. Swing is a softer variant of the grosgrain pattern, in which the wavy, harmonious structure recreates the effect of bamboo. Each element of the collection has chromatic tones of different intensities, made even more vibrant by the surface irregularities. The 6x24 size, with its straight edges that enable almost seamless installation, gives the project a decidedly contemporary character.





PROFESSIONALS IN FIRE PROTECTION

from local shops to multi-nationals

extinguishers | alarms & lighting | risk assessment | training

For friendly expert advice
call us today on **01536 484846**
or email sales@smithsfire.com



www.smithsfire.com

0151 424 5346



Advanced's EvacGo System Safeguards Retirement Complex Residents



Princess Court, a high-rise independent living complex in Manchester, has enhanced safety with Advanced's EvacGo evacuation alert system. Managed by Your Housing Group, the building supports residents aged 55 and over.

Installed by JFN Integrated Solutions Ltd, the BS 8629-compliant system complements the existing MxPro 5 fire panel, delivering reliable and user-friendly evacuation capabilities. This upgrade aligns with broader fire safety improvements, including cladding replacement and a move to a "stay put" strategy.

The system provides peace of mind and ensures controlled evacuations if needed. Advanced's tailored solutions empower fire services to manage emergencies effectively, exceeding safety standards.

For further information on Advanced: Tel: 0345 894 7000 or visit: www.advancedco.com and for JFN, Tel 01772 709959 or visit info@jfnintegratedsolutions.co.uk

GLOBAL

Fire Technical Services

THE AWARD WINNING FIRE ENGINEERING SOLUTION

Fire Scrutineer

The Fire Scrutineer concentrates on the 3 gateways of a construction project:



Design



Construction



Pre-Occupation

At each gateway, Global provide a mixture of desktop analysis and site visits to ensure that all design and actual build details are compliant, installed correctly and of good workmanship. The Fire Scrutineer records and assesses all aspects of the fire safety of the project to show due diligence and provide evidential, auditable records for the O&M manuals, in line with Regulation 38.

0115 721 2930

info@globaltechnicalservices.co.uk

globaltechnicalservices.co.uk





PURE VISTA
Glass Railing Specialists



FIRE RATED
Glass Balcony Systems



POSglaze

Adjustable & Lightweight
Tested to 0.74Kn
Up to 1300mm Glass Height



POSlone

One-side-fit
Tested to 0.74Kn
Up to 1200mm Glass Height



WE DON'T CALCULATE: WE TEST

- ✔ Fire rated to A2, S1, D0, EN13501-1
- ✔ Accredited 0.74Kn to BS 6180:2011



Call our sales team for quotes, samples & orders

www.pure-vista.com

Phone: +44 (0)1208 261040, E-mail: sales@pure-vista.com

Opening times: 8am - 5pm Monday to Friday

WE DON'T CALCULATE: WE TEST

At Pure Vista, we prioritise making the best and safest product for our customers, even if that means higher investment in research, development and testing.

Where some competitors in the market use calculations to decide whether the internal components meet fire regulations, we don't. We have tested the whole system.

Our testing had gone above and beyond the necessary requirements to improve safety for homeowners. Before our products undergo official testing, we subject them to rigorous in-house testing to ensure that every element of the system exceeds official testing and strict government regulations.

In response to the tragic Grenfell Tower fire, regulations have changed. Residential buildings now over 11 metres must comply with fire safety regulations. All materials used on the external wall system, including balustrades, must be non-combustible and classified as A1 or, DO EN13501-01 under the European classification system.

Emphasising the need to prioritise products with the highest fire safety standards is crucial as further reforms are underway for the construction industry.

Partnering with Pyroguard, we tested the channel alongside all the internal components with Pyroguard 23mm glass for a complete system test. POSIglaze and POSIone have successfully passed the fire testing installations on projects over 11 metre high and achieved A2, S1, DO, EN13501-1 status, reaching the line load of 0.74kN.



POSIone FR

POSIone is a fully adjustable system with one side fit. The system benefits from patented slider technology. Installed and adjusted on the safe side of the glass, meaning any glass replacements can be easily carried out. Enabling safer installation on projects with glass balustrade, including those over 11 metres high.

ACCREDITED TO 0.74kN TO BS 6180:2011

Both POSIglaze and POSIone are accredited and approved by multiple organisations to verify that they meet national and international building regulations for use as edge protection, where up to 0.74kN force loading is required.

► **Our fire-rating test reports and ratings are available on our website.**

www.pure-vista.com

For fire-rated products, contact our technical and sales team for assistance with design and quotes.



Fire testing before and after

ABOUT OUR FIRE RATED SYSTEMS

POSIglaze FR

POSIglaze is the first fully adjustable balustrade system to enter the balustrade market. The system benefits from patented screw clamp technology, allowing easy adjustment to the glass. Our most popular and original frameless glass balustrade system is now available as a fully fire-rated system.



CASE STUDY

Class 1 Magply boards withstand real life fire test on Surrey home



A potentially catastrophic blaze, which consumed the garage containing a parked vehicle adjoining a £1M house in rural Surrey, was stopped in its tracks thanks to the use of 12mm A1 non combustibile Magply being chosen as the render substrate board on the contract , the property was constructed using a Structurally Insulated Panel system construction (SIP) with A1 non-combustibile Magply being used on the exterior of the building as the substrate panel for the proprietary render system.

Magply is a multi-use A1 non-combustibile board with an impressive library of testing for fire applications , in the offsite and timber frame sector the board is designed and specified to contain fire and support the emergency service with added crucial time!

Although the emergency services were quick to attend the fire, which happened in August, it had taken sufficient hold that the large timber framed garage was totally destroyed with just some sections of the frame still standing. However, the gable end to the house which features a relatively thin, weatherproof finish of the silica-based K-Rend suffered only surface damage. Remarkably, although areas of the render had spalled off, the 12mm Magply boards underneath had not even charred while they had fully protected the SIPs structure beneath: a fact borne out by the system supplier, Glosford SIPs, which took core samples to confirm the continued integrity of the insulated sandwich panels which are faced by OSB.

Application

- > Fire test

Contractor

- > Fullers Plastering

Location

- > Surrey

COLOUR MATCHING



ENDLESS POSSIBILITIES OF
COLOUR FOR INTERIOR
& EXTERIOR WOOD.



HIGHLY
REPELLENT



HIGH
COVERAGE



NATURAL
INGREDIENTS



BREATHABLE
FINISH

WWW.OSMOUK.COM

MORE
INFORMATION

