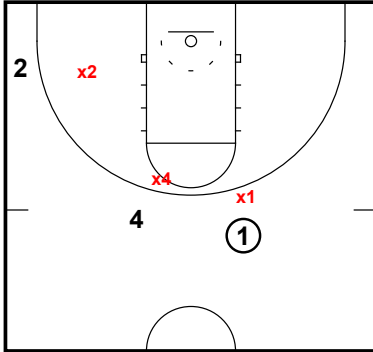


Off Ball- Pin and Post

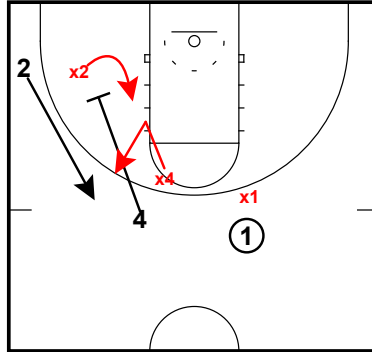
General

Attacking the Switch- Pin and Post Concepts



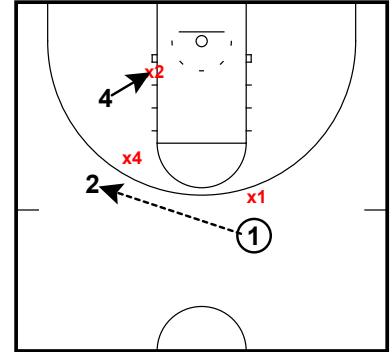
One way of attacking the switch is to run **off-ball pin down into a post-up**.

Attacking the Switch- Pin and Post Concepts



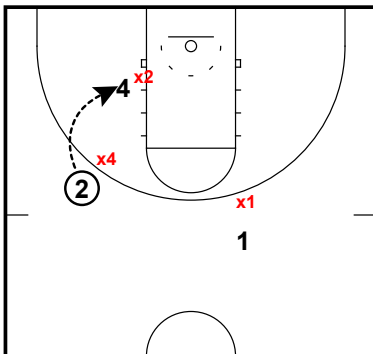
When 4 screens down for 2 and forces the switch, he will then have a smaller defender on him.

Attacking the Switch- Pin and Post Concepts



4 will take advantage of his size by sliding down into the post.

Attacking the Switch- Pin and Post Concepts

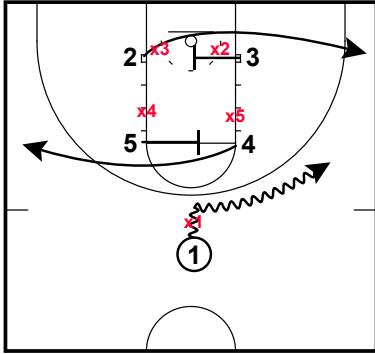


On the post up, 4 must keep his move simple as the more dribbles and further out he posts, the more defenders he brings to the ball. He should use his size and post as deep as possible so that they are able to just catch and score over the smaller defender.

Off Ball- Pin and Post

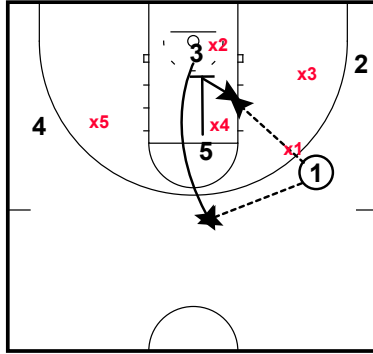
Wichita State Shockers

Box Smash
Half Court Man Offense- Sets



1 dribbles to the wing. 5 flares for 4. 3 cross screens for 2.

Box Smash
Half Court Man Offense- Sets



5 pins for 3. 3 pops high.

Box Smash
Half Court Man Offense- Sets

