



ARCHETECH

Turning Dreams into Reality

Issue 74 £4.99



SLEEK ADVANCE HOOD

HIDDEN POWER FOR ALL-DAY CLEAN AIR

Those who have a great power do not need to show it, they prefer to keep it concealed. Just like Sleek Advance: a hi-tech hood that automatically eliminates cooking odours, clearing the room from unpleasant smells and harmful agents all day long. Hidden in your kitchen cabinets, this built-in hood will be discreet, blending in with your décor and your unique style. Unleash your creative power, start cooking.



AIRMATIC



TOTAL
INTEGRATION



ADAPTIVE
LIGHTING

Discover the full range at elica.co.uk

 elica

ARCHETECH

Turning Dreams into Reality

Main Features

- Editor's Choice 8-33
- Bathrooms & Kitchens 38-41
- Coatings, Sealants & Paints 45-49
- Doors, Windows & Fittings 50-57
- Fire Safety & Security 61-67
- Floors & Flooring 68-75
- Heating, Ventilation & Insulation 79-81
- Interiors & Interior Design 84-87
- Landscaping & External Works 88-95
- Lifts, Stairs & Balustrades 98-101
- Lighting & Electrical 102-107
- Roofing, Cladding & Facades 108-119
- Swimming Pools & Leisure 122-130



Case Studies

THE LEARNING CENTRE - 6-7

The learning center has been designed as a collection of free-flowing volumes that provide a feeling of space and visual connectivity

ČEŠČA VAS POOL COMPLEX - 14-16

The new Češča vas pool complex is located in a space dominated by the existing, recently renovated velodrome

HARUDOT - 22-24

Harudot is a stand-alone café in Chonburi, a famous beachside town in Thailand

SAFRA CCK CLUBHOUSE- 34-37

DP Architects' SAFRA CCK Clubhouse Wins Sustainable Sports & Recreation Building at Architizer A+Awards 2024

STERLING GARDENS - 42-44

Nissen Richards Studio completes largest building project to date for Nelson Land

NEW ERA - 58-60

b720 Turns Simon's Old Factory to SWITCH, the Company's New Headquarters

NUAIRE - 66

Nuairé Releases CPD on High Temperature Axial Fans & VSDs

FRONTIER - 82-83

Award-Winning Wayfinding for new RPBW Courthouse

A DYNAMIC PROJECT FOR PRESCHOOLERS - 89-91

Cocoon, Pre-primary extension, Bloomingdale International School

SAINT PAUL'S LITTLE MOD - 96-97

Architizer A+ Award Winner Architecture +Models & Rendering Category

LIGHT24 - 102-103

The UK's only dedicated exhibition for lighting specification



FIRMAN GLASS PROJECTS

Firman Glass bring an innovated approach to the structural-design industry, specialising in project design, manufacturing and installation.

From bespoke one-off items through to larger commercial installations, they work hand-in-hand with clients, architects, engineers and builders to develop aesthetically pleasing solutions to their initial design concepts.

Established over 45 years ago, Firman have cemented their position as an industry leader, pioneering architectural glass technology and creating glass structures that were once unthinkable.

Let their highly experienced creative team assist you in realizing your concepts and designs, delivering a finished product that will stand apart from their competitors.

From standard mirrors and commercial glazing through to walk-on-glass floors, glass staircases, structural glass boxes and extensions, fire and non-fire rated screens, glass doors, architectural frames and glazing. Firman Glass deliver their projects on-time and to an extremely high standard, always aiming to exceed your expectations.

In the project pictured, starting from an architect's hand-drawn sketch. Firman were responsible for developing the design using a full turn-key approach. This includes the full structural and fabrication design drawings, manufacturing all the glass and metalwork components in-house and the installation using highly experienced operatives.

The project consisted of a three-story, all-glass staircase, utilizing a structural glass stringer and core, glass stair treads and a fully concealed structural steelwork package.



FIRMAN

WWW.FIRMANGLASSPROJECTS.COM

CONTRACTS@FIRMANGLASS.COM | TEL: 01708302303

Editor in Chief

Antony Holter - 0203 911 4067
antony@archetech-media.co.uk

Editor

Isabelle Hart - 0203 911 4067
isabelle@archetechmag.co.uk

Sales Director

Steve Hawkins - 0203 907 9165
steve@archetech-media.co.uk

Digital Manager

Jamie Bullock - 01227 936971
jamie@archetech-media.co.uk

Editorial Assistant

Meg Parker - 0203 907 9161
meg@archetech-media.co.uk

Business Manager

Josh Holmes - 0203 911 4067
josh@archetech-media.co.uk

Publishing Director

Martin Holmes - 0203 911 4067
martin@archetechmag.co.uk

Accounts

Lauren Davis - 0203 911 4067
lauren@archetechmag.co.uk

Studio Designer

Richard Bland
richard@archetech-media.co.uk

ARCHETECH

Turning Dreams into Reality

The Archetech magazine is an insightful information source for Architects, Architectural Technologists and Interior Designers. We feature lead stories on current projects, industry news and case studies so that our readers have the opportunity to keep up to date in the ever changing world of architecture and design.

Archetech offers architectural and design services to all those who are initiating, planning and implementing projects. Whether you're an interior designer, architect, technologist, developer or builder who is searching for inspiration for the next project, Archetech hosts the latest products, case studies and services to meet those needs.

With sharp editorial content, a cutting-edge design approach and informative written style, our advertisers and readers alike can take confidence in our experience and ability in matching your product to the needs of the marketplace.

Archetech Media Ltd

Tel: 020 3911 4067
www.archetech.org.uk
info@archetechmag.co.uk

Every effort is made to ensure the accuracy and reliability of material published in Archetech Magazine, however, the publishers accept no responsibility for the claims or opinions made by contributors, manufacturers or advertisers. No part of the publication may be reproduced or transmitted in any form or by any means, mechanical, electronic (including printing), recording or stored in any information retrieval system without the express prior written consent of the publisher.

SUBSCRIBE NOW

Digital Edition

SUBSCRIBE TO OUR ONLINE ISSUES FREE OF CHARGE

- Accessible anytime and anywhere on most electronic devices
- Receive the magazine by email as soon as each issue is released
- All issues are stored in an archive, so you can look back across every edition
- Now available on 3 major digital platforms: ISSUU, Joomag and Readly

Printed Edition

- Free of charge for qualifying trade professionals
- Paid subscriptions are available, for non qualifying trade professionals



HAVE YOU GOT A PROJECT YOU ARE PROUD OF?

If you've recently finished a project, conversion or renovation, why not submit it to our Editor in Chief for a chance to be featured in our next issue! Email antony@archetech-media.co.uk with details of your latest project.

Visit: www.archetech.org.uk/subscribe



THE LEARNING CENTRE

KSM ARCHITECTURE

The learning center at Quest is located on a 540 sq.m piece of land, about 300m from the seafront in Besant Nagar, Chennai, India. It is a learning center intended for children aged 8 to 16 years old. The center acts as a learning and interaction space for largely home-schooled children, or those with the 'unschooling' pattern of education, which involves teaching children based on their interests, rather than a set curriculum.

The learning center has been designed as a collection of free-flowing volumes that provide a feeling of space and visual connectivity. One gains access to the building through a tree-lined front court that has a set of steps and a ramp.

One enters the rectangular building footprint in the center into an atrium-like volume that opens up to



“

The learning center has been designed as a collection of free-flowing volumes that provide a feeling of space and visual connectivity.

the full height of the building, with an amphitheater rising to the right and a gallery space towards the left.

In section, the building opens up towards the south, which is the ambient wind direction in Chennai. The southern side of the site is raised in the form of a garden in order to harness the south breeze, while also taking advantage of a wind channel caused by the extended road beyond the site. The amphitheater connects the arrival space to the library above as a seamless volume overlooking the raised garden on the south.

The garden can be accessed by a slide that begins at the library. Five classrooms are stacked on either side of the central atrium. Inside this atrium, a metal staircase winds its way up, connecting all the levels. At the fourth level, the staircase comes out of the building and faces the dorm of a spiral stair that leads up to a rooftop cafeteria, which in turn opens out into a landscaped terrace on the south.

From a climate sensitivity standpoint, the eastern and the western walls of the buildings have been designed as insulated cavity walls with minimum opening, while the southern and northern walls have full-length operable windows that allow the ambient south breeze in, and are shaded by vertical aluminum aerofoil shaped louvers.



The eastern and western walls are composite 400mm wide, made up of a 300mm wide cavity wall with a 50 mm thick XPS infill as the inner layer, with a bamboo shuttered GFRC facade panel as a self-shading skin with a 25mm air cavity. This insulation system virtually cuts

off all the heat that falls on these walls.

There is a sense of openness, with no clear demarcation of space or volume - every space seamlessly blending with each other and the gardens beyond. The warm glow of glare-free natural light creates a cheerful ambiance, and the sense of fun is accentuated by the use of color, with a natural breeze wafting through the various levels- all of this provides, in our opinion, an ideal platform for learning.

www.ksmindia.com



EDITOR'S CHOICE

NE FASTENERS CELEBRATING 40 YEARS 1985-2024

NE Fasteners Limited, a family owned company is coming up to celebrating their 40th year of business.



We primarily specialise in screws fixings & fasteners for the DIY, hardware, building, joinery and furniture manufacturing sectors. NE Fasteners prides itself with offering expertise, competitive prices from local and internationally sourced standard and bespoke products.

Our warehouse is situated in a 7,000sqft warehouse in Cradley Heath in the West Midlands, we are able to provide a wide range of finishes, including zinc, electro brass, black chrome, satin chrome, bronze and nickel, and packaging options, ensuring that many buyers consider us to be a key and valued supplier.

Screwshop evolved from its established sister company NE Fasteners and has also proven a huge success with its online shop. After nearly 9 years in operation, we have grown year on year.

We have a great portfolio of products now on line at www.screwshop.co.uk, our best own brand sellers are competitively priced, saving you lots of money.



VISUALIZING ARCHITECTURE WITH PRECISION AND ARTISTRY

Since 2011, ArchiCGI has led the way in architectural rendering, transforming conceptual designs into captivating photorealistic visuals. Partnering with us gives you access to a team of over 460 skilled 3D artists passionate about making your projects shine. Whether you are an architect or interior designer, we help you showcase the beauty and functionality of your work in ways that inspire and captivate your audience.

With our versatile solutions, ranging from static images to immersive animations and VR experiences, you receive the tools to bring your presentations and marketing campaigns to new heights. Our professional project managers, custom CRM, and vast 3D library with 100,000 CG assets ensure smooth workflows. On top of that, our regular clients can expect attractive discounts..

Elevate your project presentations with us!
archicgi.com | sales@archicgi.com

screwSHOP.co.uk

SCREWS FIXINGS FASTENERS BRACKETS
FOAMS SEALANTS ADHESIVES AND MORE

LOW PRICES UK NEXT DAY DELIVERY
THE EXPERTS CHOICE SINCE 1985

THE HOME OF

TURBOOWIK
THE PRECISION MULTIPURPOSE
PREMIUM WOODSCREW

**RHINO
SCREWS**



INCLUSIVE DESIGN & ERGONOMICS

IDEAS' Mobile Information Unit provides an easily recognisable, inclusive, physical touchpoint for people to meet staff and seek assistance and information. It's suitable for rail stations, transport hubs, airports, stadia, shopping centres, leisure and hospitality, and other public spaces or events.

It has been designed to provide better inclusive and accessible customer facing facilities for everyone. It features a 3-tier counter, recharging point, hearing loop, and can be mobile or fixed. It's fabricated from steel and aluminium and with solid core laminate counter tops. Branding according to the customer's requirements.

For more information visit www.ideas.ltd.uk or call 01844 355 474.





GRAPHENSTONE

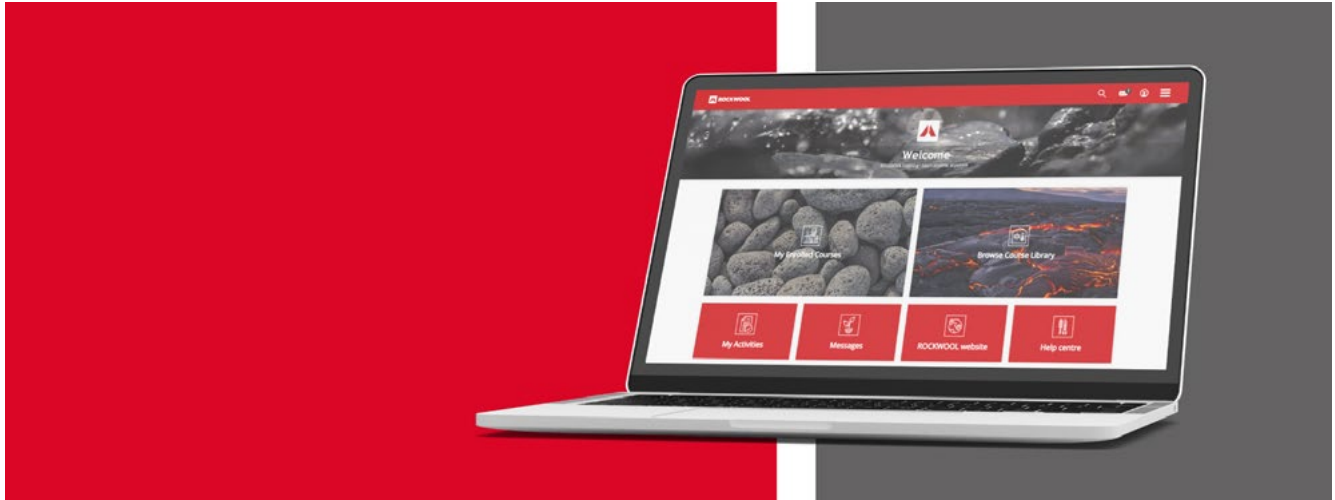
— PURIFYING PAINTS —

Purifying paints for
enhanced indoor wellness.

Purifying the paints industry
with sustainability.

graphenstone.co.uk | info@graphenstone.co.uk | +44 (0) 1379 772 940





ROCKWOOL® SUPPORTS CONSTRUCTION PROFESSIONALS WITH E-LEARNING PLATFORM

ROCKWOOL LEARNING SIMPLIFIES CPD ACCESS AND TRACKS PERSONAL PROGRESSION

Stone wool insulation manufacturer, ROCKWOOL has expanded its technical and specification support with ROCKWOOL Learning, an e-learning platform that makes it easier for construction professionals to access learning resources and track personal development.

Designed for self-guided learning, the platform allows registered users to access experience-appropriate content and complete self-selected modules at their own pace. Learning progress is automatically tracked through the platform, giving users an accurate CPD record and removing the need to manually record the completion of eligible activities.

ROCKWOOL Learning brings together the company's suite of learning and development resources into one place, making these readily accessible any time of day. While initial launch provides access to instructional and informational content for architects and contractors, ROCKWOOL has a clear roadmap to expand its offering over the coming months to accommodate other construction stakeholders including housebuilders, self-builders, and fire or HVAC specialists.

"Best practices and legislation in the construction industry are always evolving, so it's essential for specifiers and contractors to have access to up-to-date

“

Best practices and legislation in the construction industry are always evolving, so it's essential for specifiers and contractors to have access to up-to-date development and training opportunities.

development and training opportunities. ROCKWOOL Learning is our latest investment to help enhance the skills and knowledge of those in the industry," said Paul Barrett, Head of Product Management at ROCKWOOL.

"We want to empower industry professionals with the knowledge they need to make informed decisions when it comes to selecting insulation solutions. In the coming months, we will develop the platform with additional courses and training to assist with personal development across an even wider variety of building topics."

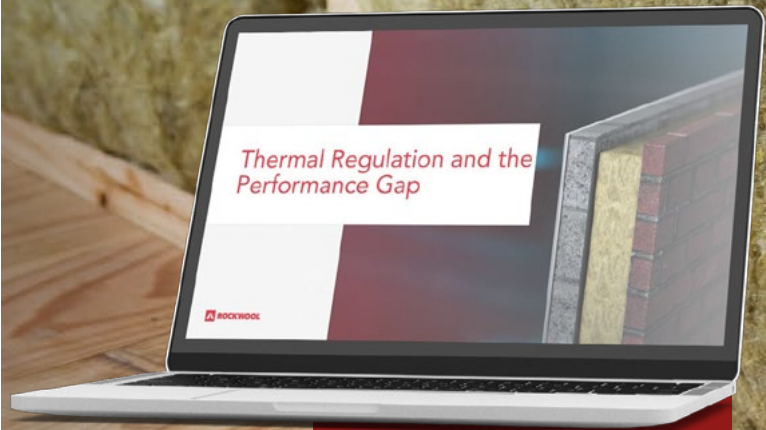
To get started with ROCKWOOL Learning, visit the website today: www.rockwool.link/rwl-arch

CPD: The Performance Gap

Ensure your buildings achieve specified thermal performance by sharpening your knowledge on regulations, standards and closing the performance gap.

Learning outcomes:

- Understand the journey to today's thermal regulations
- Understand common installation issues that can impact thermal performance
- Reflect on Passivhaus principles and their importance
- Discover the benefits and application of stone wool insulation



Register today:



rockwool.com/uk/pg-cpd



rockwool.com/uk

JUWO EVOLVED SMARTWALL

BUILDING SYSTEM – THIN JOINT MASONRY FOR THE FUTURE

The design of the blocks is such that they require no mortar or adhesive on the interlocking vertical joints. The fired, aerated clay blocks are manufactured to a tolerance of 1mm in height and come as a complete system that includes lintels, corner and shaped blocks, insulated mortar, adhesive and applicators.

These structural blocks have been used for many years across Europe and are suitable for load bearing and non-load bearing walls, for external & internal applications. They have full approval and comply to BS EN 771-1 and carry both a UK CA & CE mark with an A1 fire rating, making them the ideal building system for low and high rise developments as well as for the self-builder.

Juwo SmartWall™ Benefits.

- Excellent Thermal Performance.
- Meets & Exceeds Building Regulation requirements.
- Quick Construction Time.
- Single solid wall construction.
- Modern Method of Construction
- Thin bed mortar technology
- Complete Building System.
- >85% less moisture in construction.
- Completely Vapour permeable.
- External Insulation to give that 'tea cosy' effect.

Clay is possibly one of the most sustainable materials used in construction. It is a natural material that is easy to work with and provides a comfortable living environment.

Juwo SmartWall™ explained.

The SmartWall system delivers a much faster build time. The thin joint adhesive allows you to continually work without being restricted to the number of lifts in a day, on average, up to 40 sqm can be achieved per person per day.

Juwo SmartWall™, being a monolithic building system, means that you have just one skin for your building structure, no cavity, therefore minimising areas for complicated detailing and areas for insulation to be missed.



With standard masonry systems, drying out can be problematic in the UK climate. The adhesive layer helps to reduce moisture in the building by over 85%, this, coupled with the faster build time, means that your building can be roofed and weathertight in a much shorter period of time.

Efficiencies & Performance.

The Juwo SmartWall™ building system has a superior thermal performance compared to other similar products, making it easy to achieve Building Regulation or better requirements without the need for additional wall insulation or increase in foundation size.

The thermal performance of Juwo SmartWall™, together with the density of the blocks, provide excellent thermal mass. Too many modern homes face the risk of summer overheating. The Juwo SmartWall™ system provides warmth in Winter and comfort in Summer. The clay will also regulate humidity levels within the home and it is recommended that a mineral plaster finish is applied directly to the blocks to maximise this performance as well as achieving Air Tightness.

Air tightness is achieved by applying a Juwo SmartWall 'parging' coat to the inner face of the blocks where Plasterboard is being used internally. This is a standard method of achieving good air tightness and recommended by the Passivhaus Institute.

By applying a vapour open render finish to the external surface of the blocks, coupled with the mineral plaster inner finish, Juwo SmartWall™ provides a complete vapour open system. Thermal modelling shows that interstitial condensation will not form within the construction. If a Brick outer facing is required this can be achieved using any standard brick and our Uni-Perfo range of wall ties designed to match the coursing of a UK brick with the Juwo SmartWall system.

The Juwo SmartWall™ system provides a thermal bridge free method of construction without the need for complicated detailing.

The Juwo SmartWall™ System has been developed for anyone to use and we can provide 'on-site' training, if requested.

**For more information, call 0808-254-0500
or visit the website www.Juwo-SmartWall.co.uk**

JUWO EVOLVED SMARTWALL™

THE CLAY BLOCK BUILDING SYSTEM OF THE FUTURE

JUWO Evolved SmartWall™ is a Monolithic clay block building system for External Wall Construction that's easy to build with, reduces construction time, has excellent thermal insulation qualities and requires no cavities, no additional insulation and no wall ties, to meet current and new Future Home standards.

The system offers a full array of block types and sizes to meet any thermal requirement from 0.28 U Value through to 0.11 U value, all in a single block.



Thin bed mortar technology

Single solid wall construction. Wide range of block sizes.

Breathing wall construction. Completely vapour permeable

Easily cut to size

No cavities, no wall ties, no additional insulation needed




The JUWO Evolved SmartWall™ system comes with all the necessary ancillary items such as Insulated Steel Box lintels, fixings and finishing plasters, renders and brick slips options.


Full 'on site' training can be provided if required.



JUWO Evolved SmartWall™

 www.juwo-smartwall.co.uk

 0808 2540 500

 mail@juwo-smartwall.co.uk



Discover the benefits of building with JUWO Evolved Smartwall here:





ČEŠČA VAS POOL COMPLEX

ENOTA

The new Češča vas pool complex is located in a space dominated by the existing, recently renovated velodrome. Enota's preference was to not drastically alter the spatial relationships with the erection of the new swimming pool facility, as it would introduce disorder that the space could do without, and further saturate it. The new pool facility thus takes advantage of the topographic properties of the inclined terrain. It is sited as low as possible and does not constitute a new dominant in the space.

The complex comprises two interior pools and their infrastructure; in the 2nd phase of the project, an exterior Olympic-size pool is to be added. The spatial design employs partially dug-in levels to



“

The building's subdued appearance in the space is achieved by the low floating roof, under which the surrounding landscape is allowed to flow across the pool.

separate the individual new amphiteatral ambients by way of elevation. The entrance hall is thus disconnected from the traffic surfaces, while the lowest-lying pool area corresponds to the elevation of the surroundings at the westernmost edge of the area. The banks of the cut terrain are transformed into grandstands for the visitors. In this manner, the design reduces the structure's facade envelope surface, thereby increasing its energy efficiency and reducing the investment cost. The possible risk due to increased terrain excavation is thus efficiently balanced.

The building's subdued appearance in the space is achieved by the low floating roof, under which the surrounding landscape is allowed to flow across the pool. At the same time, the roof of the structure is the volume housing all the program, which does not require direct contact with the water surfaces. The program arrangement ensures a taller ceiling height above the pool space, and a lower ceiling height at the reception desk and changing rooms. The structural design of the roof, featuring a grillage based on wall beams concealed in the program's partition walls, allows for large spans and requires few vertical supports. The light appearing along the entire perimeter creates an impression of the roof volume hovering above the pool surface, while wide views of the surrounding nature open from





the interior. The cantilever roof on the building's entrance side acts as a canopy, which, together with the dug-in amphitheatre surface, forms the exterior entrance platform.

The materiality of the pool complex is very simple and restrained. The facade envelope of the floating roof is covered in natural, unvarnished timber boards, which will in time age and thereby further blend the building with the materiality of the surrounding forest. Together with the tilted geometry, the roof appears in the space as a paraphrase of the local rural development. The design of the amphitheatral spaces, i.e. the program platforms on the various levels, is homogenous and executed in local concrete with different surface finishes. The only material accent is found in the building's interior. The bottom side of the floating pool roof volume is uniformly coloured in an intense, warm hue. The ceiling is thus rendered sufficiently present so as to act as a pleasant shelter for users, despite the pool space's lack of filled perimeter walls. At the same time, the interior being accented in this way acts as a discreet invitation for the users of the surrounding exterior space.

www.enota.si/



INDUSTRY-LEADING ANTI-SLIP FLOORING & GRP SOLUTIONS

Full Design-Build-Install Service

We take care of everything from site survey to completed installation

Design-Build Service

We provide you fully or part fabricated modules for your teams to install

Materials Supply

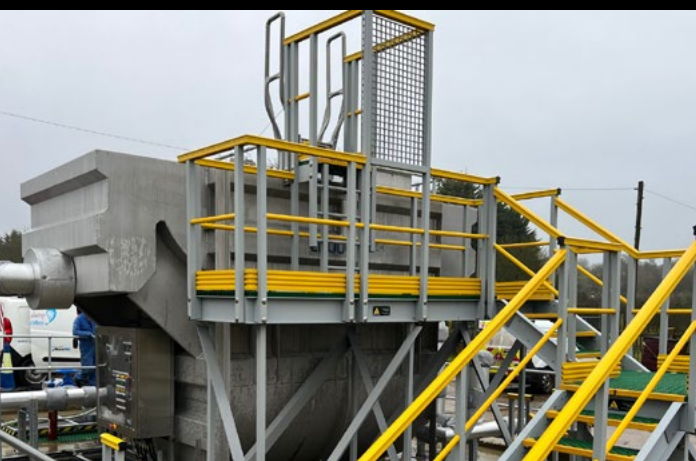
We're happy to supply the materials and fixings needed for your own projects

Advise/Supervise

For specialist environments we can simply be on site to support your teams

Training

We provide specialist GRP training courses to enable your teams to understand its unique properties



TALK TO US TODAY

(04) 1206 396 446

sales@steponsafety.co.uk

steponsafety.co.uk

WE ARE MORE THAN JUST A COMPANY - WE ARE A TEAM OF EXPERTS DEDICATED TO MAKING THE WORLD A SAFER PLACE!

SCHÖCK PROVES MORE THAN EQUAL TO PASSIVHAUS CHALLENGES

CUSTOM HOUSE

Custom House is a major regeneration scheme in Newham, East London. A project which Schöck has been heavily involved in from the outset; initially providing full design support and installation training. The project is designed to Passivhaus standard, so the need to effectively eliminate any risk of thermal bridging at various points of the design detailing was crucial. As Europe's leading supplier of innovative load-bearing insulation products, this is where Schöck really came into its own - with high performance solutions for the columns, balconies and parapets. Known as the Custom House kickstart project and designed by Adam Khan Architects and Haworth Tompkins (for which they received a Housing Design Award) it is part of a wider masterplan by Adam Khan Architects. The main delivery partner is The Hill Group and the scheme overall consists of three mansion blocks, ranging in height from four to eight storeys. This first stage though will deliver 95 affordable homes, along with commercial space, community growing space, communal gardens and a high-quality accessible public realm.

The columns presented a special challenge

It is estimated that around 40% of all structural thermal bridges in buildings are caused by walls and columns; and these are calculated to be responsible for at least 10% of the heating energy loss. The recently introduced Schöck Sconnex range is a unique solution to this problem, allowing walls and columns to be directly and permanently insulated. There are three product

variations, the type W, type P and type M. Specifically, the Sconnex type P is the product used at Custom House. It consists of a thermal insulation element and a reinforcement element, both of which are required to withstand the bearing load. The thermal insulation element has a pressure-resistant support structure, made of light-weight concrete and polypropylene fibres, all in a 100mm thick insulation layer. Its performance significantly reduces heat flow, but importantly, also eliminates the need for the traditional solution of using cumbersome flanking insulation. On this occasion though, quite apart from effectively isolating the rectangular columns from the rest of the building, there were challengingly high load requirements. To meet these demanding loads, it was necessary to incorporate multiple Sconnex type P units at the head of each column - the first time this particular design solution has been used in a UK project.

Parapets are as prone to thermal bridging problems as balconies

Preventing thermal bridging at the Custom House parapets was also a critical consideration for such a high performance development, because as with balconies, parapets can allow conductive materials to transfer energy through the thermal barrier. Conventionally, in the majority of cases, the method of insulating parapets and parapet walls is to wrap the perimeter of the wall with an insulation barrier. However, the Schöck Isokorb XT type A used here offers a solution



Custom House Image courtesy of Adam Khan Architects



To meet these demanding loads, it was necessary to incorporate multiple Sconnex type P units at the head of each column - the first time this particular design solution has been used in a UK project.

“

Preventing thermal bridging at the Custom House parapets was also a critical consideration for such a high performance development.



Graphic of the XT type A in position

that is both more cost-effective and more thermally efficient than conventional wrapped parapets. Its 120mm insulation thickness results in low psi-values and therefore significantly reduces heat loss - and there is no wrapping required. An added benefit being there is no risk of any additional thermal bridging through balustrade fixings. Other key factors are durability - and significantly water impermeability - so there is no risk of expensive maintenance or restoration due to waterproofing problems.

High performance solution for the concrete balconies

For the concrete balconies at Custom House the tried-and-tested Schöck Isokorb XT Type K has been incorporated to meet Passivhaus standards. The XT type K with compression module HTE-Compact and 120 mm insulation thickness, is a load bearing thermal break element for free cantilevered balconies. It is the company's most efficient thermal break ever, offering 30% more thermal performance than the standard Schöck Isokorb T type K.

The widest range in Europe

All of the Schöck products used at Custom House (the Sconnex type P, the XT type A and the XT type K) are certified by the Passive House Institute in Germany. With the Sconnex type P being the only column connection certified by the Institute. The fully compliant Schöck Isokorb range, whether for Passivhaus or standard solutions, offers the widest selection of



Above, graphic of the XT type K in position. Below, graphic of a conventional Sconnex type P unit in position



structural thermal break solutions from any European supplier. In the UK, the range enables projects to meet full compliance with the necessary Building Regulations (and the impending Future Homes Standard criteria where relevant). There is also the security of independent BBA Certification, which provides NHBC approval.

Contact Schöck on 01865 290 890; or for full details of the entire product range visit the solutions page on the website at www.schoeck.com/en-gb/solutions-uk

THE RISE OF THE PERGOLA

ADDING A NEW ROOM TO THE GARDEN

*By Shaun Cartwright - National Sales Manager
Domestic & Residential Systems*

Outdoor living areas have experienced significant growth following the pandemic, as the trend of staying at home, unwinding and hosting gatherings in the convenience of our own outdoor space has become increasingly popular.

As the typical average UK garden spans 188 square metres, which is in fact the same size as a regulation tennis court, our outdoor spaces are proving to be one of our most prized possessions. Given the abundance of additional living area this offers, it is hardly surprising that our gardens are evolving into more inviting spaces, mirroring the comfort of indoor living. Advancements in materials have opened up a world of possibilities when it comes to sustainable outdoor textiles, rugs, lounge sets, and lighting that can be just as stylish outdoors as they are indoors. However, it is important to be prepared for the unpredictable Great British weather. Awnings not only provide shade on sunny days but also create a new outdoor room ambiance. Integrated lighting and heating options allow you to enjoy your outdoor space even in the evening.

A more substantial outdoor canopy is another great option. With the choice of a louvered, retractable or flat solid roof, a canopy can be freestanding or fixed against existing walls and will remain relatively weathertight when closed. Fixed roofs offer simplicity, with the bonus of being able to offer shelter in all but the most inclement weather, whereas louvered and retractable designs allow control over how much light and openness you want on sunnier days. These options also work well when attached to your house, allowing you to open the roof at the press of a button to draw more light back into your interior space



and offer a seamless transition between inside and outside.

These freestanding structures are known as 'pergolas' and have a long history. Originating in Ancient Egypt as ornamental features providing shade from the sun, nowadays, they serve similar functions while also providing opportunities to expand living areas. Garden pergolas can be placed in various locations in the garden to capture the best aspect or midday sun.

Aluminium is an excellent material of choice for a freestanding pergola, or lean-to canopies. With its high resistance to corrosion and availability in a wide range of finishes and colours, a structure can be designed to blend in perfectly with any garden. Aluminium also provides excellent structural capabilities negating the need for any further supporting structural materials. Today's pergola is an incredibly versatile solution for covering small or expansive areas. It serves as a stylish addition that seamlessly aligns with many contemporary or traditional construction trends.

The pergola is not only beneficial for single-family homes as part of terrace or garden enhancements, but also for commercial structures. It serves as a modern and functional roofing element for outdoor spaces in such places as cafes, restaurants and office complexes. With the option of additional side screens and sliding glass panels, the pergola can be adapted to be used all year round, regardless of the weather conditions.

*Shaun Cartwright
Residential Sales
Manager of
Aluprof UK*



“

The pergola is not only beneficial for single-family homes as part of terrace or garden enhancements, but also for commercial structures.

Aluprof provide two pergola systems, the premium MB-OpenSky 140 and the MB-OpenSky 120.

The concept design of both 'MB-OpenSky Pergola' system allows for the installation of Aluprof's 'SkyRoll' side screens or 'MB-OpenSlide' sliding glass panels, offering the opportunity to create a unique outdoor space. Additionally, the pergola can be customised with LED lighting that won't interfere with the roof slats and optional infrared heating units. The lighting design includes an LED strip on the roof slats, a spotlight, and extra lighting around the upper edge of the structure.

The roof structure consists of rotating adjustable slats and a mechanism to change their angle from 0° to 135°. The slats have custom seals to protect against rain and the posts contain a concealed drainage system to efficiently direct water to a rainwater drain or soak away. Tests confirm that for structures measuring 6 metres in length, 4 metres in width and 3 metres in height, the maximum permissible snow load is 200 kg/m², equivalent to approximately 1m height of snow and a simultaneous wind load of around 59 mph.

There are two system versions to select from, a free-standing arrangement and a wall-mounted design. The wall-mounted version is supplied with custom-designed brackets for wall installation depending on the substrate being fixed to. Both freestanding and wall mounted systems allow for maximum dimensions of 7 metres in length, 5 metres in width, and 3 metres in height per section to be achieved. Several sections can be combined to cover large areas of outdoor space in commercial situations.

The concept of outdoor living is rapidly gaining recognition in the UK as the climate changes and offers significant opportunities from home improvement companies to widen their product portfolio for homeowners wishing to explore options for their outdoor living spaces.

Further information about the wide range of systems on offer and specification support is available through the company's website at aluprof.co.uk or contact Aluprof's UK & Ireland's head office in Altrincham by phoning +44 (0) 161 941 4005.

www.a2n.co.uk

ALUPROF
ALUMINIUM SYSTEMS



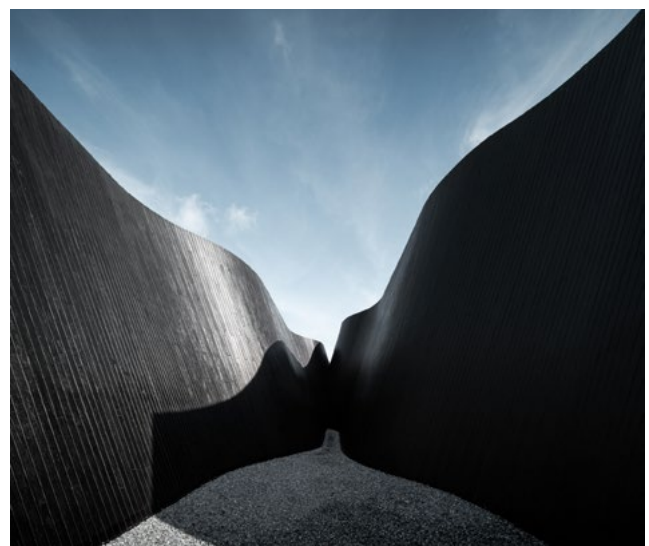


HARUDOT

IDIN ARCHITECTS

Harudot is a stand-alone café in Chonburi, a famous beachside town in Thailand. This cafe is a result of a collaboration between the Nana Coffee Roasters brand owner and the landlord who has a particular interest in plants with unique forms.

The name “Haru” translates to “Spring” in Japanese, referring to a “new beginning” and “growth” while “Dot” symbolizes a “starting point”. The two main requirements for this cafe are to, firstly, design a “destination” with an interesting experience that is able to attract visitors and, secondly, to include the landlord’s identity in the design in order to signify this unique collaboration. The architect chose to focus on the concept of new beginnings and growth by including trees in the heart of the design. A bottle tree (baobab) has been placed in an inner court, where the gable form



“

The cafe brand's identity is strongly inspired by Japanese culture, hence the architect interprets this as humble simplicity but with attention to detail.

of the architecture is pulled apart to allow for its growth towards the sky, thus making it appear as if the seed of the baobab was planted long before and has grown out through the architecture as time passes.

The cafe brand's identity is strongly inspired by Japanese culture, hence the architect interprets this as humble simplicity but with attention to detail. This is represented through the exterior, using three simple gable forms in black color for a subtle look that contrasts with the natural warm pine wood walls of the interior space. As visitors enter the cafe through the gable, the space morphs and bends with curves as it leads guests further into the cafe, where the space becomes more dynamic and memorable.

The building is separated into smaller masses to make it more human-scale, which establishes different zones such as the bar, coffee drinking zone, a lounge, a meeting room, and the restrooms. The giant gable roof form of each mass is pulled apart at certain parts, allowing the tree to penetrate through a void to the sky, creating a semi-outdoor space underneath. These voids also resulted in an interesting curved form which added movement and dynamism to the architecture. The voids allow for rainfall and sunlight to enter into the semi-outdoor court, maintaining a connection with nature despite the enclosed walls. These opening features continue into the interior space, where instead of actual voids, they are enclosed with Barrisol stretch ceilings





that help diffuse the lighting inside, creating a warm, softly lit space. The Barrisol ceiling also echoes with the actual open voids in the courtyard, visually and conceptually connecting both spaces into one entirety.

The seating arrangement is designed to be continuous like a ribbon, wrapping around the interior space to create continuity, whereas the height of the counters differ to suit the different functions and uses. The outdoor seating is made from resin, mixed with coffee grounds, rice, and leaves to tie into the coffee theme.

The attention to detail extends to the graphic elements, with custom-designed fonts and signage which have been inspired by circular dots and the spring season. The floor is terrazzo, and the separation in the material is necessary, therefore the architect specifically designed the floor separations to be circular, with insertions of embedded quotes and words that lead to different functions in the cafe. Another playful element includes the flower petals pattern in the terrazzo floor, radiating outward as if they have fallen from the actual trees. The architect formed a playful connection through this interplay between the different dimensions, resulting in another hidden gem for the customers to unveil.

www.idin-architects.com



KENOTEQ[®]

Building a sustainable world K-BRIQ[®] by K-BRIQ[®]



The newly launched K-BRIQ[®] and K-SLIP[™] are revolutionary UK-manufactured low carbon, circular building materials for interior or exterior use, targeting the critical issues of net zero, mandated embodied carbon targets, legislation-led waste reduction and the shortage in construction materials supply.

- Made from >90% recycled construction & demolition waste
- Unfired • 100% recyclable • Multiple applications
- <5% carbon footprint of traditional bricks - 1.004 kg CO2e per square metre (excluding mortar)
- F2 A2 facing products with competitive technical specification
- Wide colour palette - coloured with recycled pigments
- Standard K-Briqs: solid and perforated formats
- Bespoke options • Local supply chains

www.kenoteq.com

Design without compromise



/kenoteq



/kenoteq



/kenoteq

STAINLESS STEEL

SINKS • WORKTOPS • CABINETS • SHELVING



GEC ANDERSON[®]

the stainless steel specialists

www.gecanderson.co.uk

Latest Schöck BBA Certification raises the bar.

Thermal break technology you can trust.



No need to compromise on performance, quality or service. Schöck products meet full compliance with relevant UK building regulations, are approved by the BBA, NHBC accepted and classified as fire resistance class REI 120.

www.schoeck.com

4 EXPERT TIPS FOR BUILDING A WATER-RESISTANT DECK

TREX RAIN ESCAPE

It is common knowledge among professional builders that water is the enemy of timber and the leading cause of deterioration for decks. It can lead to mould, mildew, rot and premature deck failure. To prevent moisture from undermining your next installation, keep these four tips in mind:



1. Survey the slope.

Water must drain away from a deck structure. Set the deck framing at a pitch of 1% to 2% to slope away from the building site. If you plan to install an under-deck drainage system, decide where the water will discharge. Consider adding a French drain (a.k.a. an engineered trench), reservoir or other means to redirect the water or collect it for use in watering a garden or planting area.

2. Protect the substructure.

The lumber used in deck building is pressure-treated to be water-resistant - not waterproof. To protect a deck's structural elements from moisture and rot, it's critical to apply flashing tape, such as Trex® Protect, over all the joinery and blocking. Designed specifically for decking applications, and available in sizes for use on joists, bearers and rims, these self-adhesive butyl tapes also seal deck fasteners and help screws to hold longer and stronger by preventing moisture penetration and defending against splitting that can result from seasonal freezing and thawing.



3. Use low-maintenance decking.

Timber decks can be beautiful but any timber, whether pressure-treated lumber, cedar or exotic hardwood, must be cleaned regularly and coated every few years to keep it looking good and prevent water damage. That's why composite and PVC boards, which are practically impervious to water, continue to gain popularity. They require little upkeep and last for decades.



4. Divert water with a deck drainage system.

For more comprehensive waterproofing of your substructure, consider adding a deck drainage system. Designed for use on elevated decks, these systems capture and divert water away from a deck. This not only protects the foundation from moisture penetration but also keeps the space beneath the deck dry and usable for storage or as an additional outdoor living area. Offering maximum protection, the Trex® RainEscape® system installs above the joists of a deck to shield the entire foundation. It also allows homeowners to discreetly run gas and electrical lines beneath the drainage system and a soffit ceiling to power lights, ceiling fans, appliances and electronic components.

For more waterproofing tips, visit www.TrexProtect.com.

Emerald Ward



Manufactured, Tested, Specified, Certified

Sunray is the specifiers choice for **Timber Fire Doors and passive Fire Protection**. Our comprehensive Timber Door Range provides Fire Integrity from **FD30 to FD120** and Security Rating of **SR1 & SR2** with Fire Secure.

All Doors are bespoke enabling specialist hardware, vision panels, overpanels and of course colours and finishes.

We operate in numerous sectors and provide performance specifications to meet project requirement.

We are the specifier's choice for:



COMMERCIAL



HOTEL / LEISURE



SOCIAL HOUSING



HEALTHCARE

For more details, call our specialised team to discuss your particular project on

01233 639039

sales@sunraytimberdoordivision.co.uk | www.sunraytimberdoors.co.uk



SPATEX IS THE ARCHITECT OF WATER LEISURE!

FIVE REASONS TO ATTEND SPATEX 2025

Tapping into the magic of water leisure, SPATEX 2025 is Informative, interesting and unmissable. The UK's annual exhibition returns to the Coventry Building Society Arena, Tuesday 4th to Thursday 6th February. Whether commercial or domestic, it offers an opportunity to take a deep dive into the world of spas, wellness suites, swimming pools, steam rooms, saunas, water features, enclosures and all the ancillary equipment.

1. Unique - Free to attend, the UK's only dedicated water leisure exhibition is a go-to event for all those involved in the design and construction of wellness leisure facilities. Network with over a hundred exhibiting companies, including all the leading manufacturers and suppliers from around the world. SPATEX 2025 provides an opportunity to view and compare a host of new innovations. See, touch and discuss the latest products and take advantage of exclusive show offers. Meet the decision-makers - this is where all the conversations that will shape this market over the next 12 months will take place. Ensure your business is part of the conversation.

2. Gain valuable insights - Saving energy and sustainability will, once again, be top of the agenda. See the latest models and innovations, from heat retention covers and LED lighting to air source heat pumps and super insulated one-piece pools, there is plenty to catch the eye. Minimising energy usage is a consideration that needs to be factored in at the design stage which is why this show is of vital importance for builders, architects and designers.



Overflow, Niveko



Designworks Tiles, Stobo Castle

3. Free intelligence - Energy saving will also feature in SPATEX's double seminar programme - the industry's largest, free-to-attend learning opportunity. Catch over 20 CPD-accredited technical workshops, curated by ISPE (Institute of Swimming Pool Engineers) in Arena 1. Arena 2 offers an equally varied programme with industry leaders giving their insights on topics such as future trends, social media and marketing, and best practice.

4. Expert advice - Gain the most up-to-date information from over a thousand industry professionals. Some things can only be done in person - bring your plans with you - there's no better place to seek impartial advice from a variety of specialists, and all for free. Visit the SPATEX Help Desk at the entrance to the Arena to be pointed in the right direction.

5. Design inspiration: View and discuss how adding water leisure to an installation can totally transform its aesthetic. The BSPF (the British Swimming Pool Federation) will showcase on stand A1, on Wednesday and Thursday of the show, the 2025 British Pool & Hot Tub Award-winners, featuring the best examples of design, construction and installation.

SAVE THE DATE: SPATEX 2025 - Tuesday 4th to Thursday 6th February. The Coventry Building Society Arena, Coventry CV6 6GE. Register your interest now and sign up for monthly newlines www.spatex.co.uk
For more info: helen@spatex.co.uk
Tel: +44 (0) 1264 358558

SPATEX

THE POOL, SPA & WELLNESS SHOW

TUESDAY 4 – THURSDAY 6 FEBRUARY 2025

SPATEX represents all sectors of the water leisure industry from pools, spas, saunas to hydrotherapy, steam rooms and play equipment, in both the domestic and commercial arena.

**FOR MORE INFORMATION AND
TO REGISTER FOR FREE VISIT:
WWW.SPATEX.CO.UK OR
CALL +44 (0)1264 358558**



IMAGE COURTESY OF NIVEKO POOLS.UK – WWW.NIVEKO-POOLS.CO.UK

COVENTRY BUILDING SOCIETY ARENA • COVENTRY • UK

BUILDING A BRIGHTER FUTURE WITH VICAIMA

THE IMPORTANCE OF MAINTAINING STANDARDS

As we stand on the brink of potentially a major re-focus for the construction sector and a new emphasis upon delivering living, learning, leisure and workspace fit for future generations and designed to meet ever-changing aspirations, we must not lose sight of the need for maintaining quality, regulatory and environmental standards.

In the realm of fire safety, Vicaima has established itself as a leading manufacturer of timber doors and door kits, setting a benchmark in the industry with comprehensive certification and third-party accreditation. With a commitment to design quality and performance, Vicaima has consistently demonstrated its ability to produce doors that not only meet the needs of current living, but forever look to the future. With an unwavering attention to sustainability goals, Vicaima products integrate seamlessly with the needs of the built environment.

Lasting good looks

A perfect example of how Vicaima combine tough products with real room appeal is in the use of the recently expanded Dekordor HD Colours range. In a world where skills and labour shortages on site are a constant concern, the argument for using factory assembled door kits and pre-finished products is self-evident. HD Colours presents a high resistance, durable continuous pressure laminate that affords long lasting good looks, with a choice of 14 on-trend colour options. Already extensively used for student accommodation, education and commercial environments, HD Colours has a proven track record, making it a worthy alternative to the ever-present and widely used white door and frame. Fresh for Summer 2024 has been the introduction of four new finishes, including Twilight Blue, Granite Grey, Green Mist and Light Grey. These neutral colours add an ideal subtle touch for rooms. Designed for a brighter future in living and workspaces.

Sustainability / ESG

The Vicaima Group is committed, within the framework of the ESG (Environment, Social and Corporate Governance) criteria, to making its contribution towards achieving the Sustainable Development Goals (SDGs) defined by the United Nations.

Vicaima acts with the responsibility of providing the market with solutions that have a reduced impact on the environment, are accessible to all and ensure

people's safety and well-being and contributing to a more inclusive way of living.

Being sustainable in today's timber doors market, is not just about having all your products covered under FSC certification. While that is the case with Vicaima, their aims and aspirations go well beyond ticking obligatory boxes. As the saying goes, actions speak louder than words and so it is a measure of the importance Vicaima sets in its ESG obligations that it has laid out the Facts and Figures of its path through sustainable.

Most recently, Vicaima announced that Sustainable Production and Consumption was one of its major areas of action, working actively to extend the life cycle of its solutions, by optimising the entire value chain and minimising waste.

The Vicaima Group's approach to this issue has produced concrete and measurable results. In 2023, a total of 4,139 tonnes of waste was generated, representing a 15% decrease compared to the previous year. From this volume, of which wood waste represents a significant part, 96% was valorised through reuse in new products, recycling or the production of thermal energy.

During all operations, the different waste circuits are continuously monitored and categorised, making it possible to optimise the separation and forwarding of waste for recovery via the various duly accredited waste partners or operators, with the aim of being reused and reintroduced into the value chain, thereby avoiding the final destination to be landfill.

In this context, priority is given to progressively include in Vicaima's manufactured products or those that it integrates throughout the supply chain, renewable materials, high percentage recycled materials or wood-based products made from fast-growing natural fibres, rather than virgin raw materials.

As we look to the future, Vicaima continues not only to lead the way in product performance, but also to ensure this goes hand in hand with design and innovation, for a safe and sustainable environment.

To find out more visit www.vicaima.com or email technical@vicaima.com

vicaima

GROUP

 Sustainable Door Solutions

Together we build the Future



Scan to know more



vicaima.com

Project services from bott

bott

CONSULT | DESIGN | MANUFACTURE | DELIVER | INSTALL



Download our projects brochure by scanning the QR code

www.bottltd.co.uk | info@bottltd.co.uk | 01288 357788

.work .smart .bott

Introducing the new

HRV COOL PLUS™


The **smart choice** for thermal comfort **all year round**

Overheating indoors can present several dangers, such as heat-related stress, dehydration, and heightened health issues. The new Titon HRV Cool Plus™ offers a solution designed to deliver cooling and filtered air for user comfort in warmer weather conditions via a compact efficient MVHR and cooling module.



- Up to 3.3kW total cooling (subject to volume flow and relative humidity)
- Available for wall mounting or floor mounting
- Minimal maintenance of fully sealed refrigerant heat pump with coil & fin heat exchangers
- No need for run around ducting. Keeps complexity low
- CIBSE accredited CPD course available on Part O



 01206 713801 | marketing@titon.co.uk | titon.com/cooler

Titon
ventilation systems



Modest Garden Studios to Spacious Homes

Ecospace Studios, a London-based architectural firm, has created breath-taking modular buildings for multiple uses including garden offices, homes and educational buildings over 20 years ago. The vibrant and multicultural team works from their central London office. The studios' approach was to create a high-quality sustainable building at a fixed cost and short delivery period by combining design and off-site construction in-house. They provide a flexible modular building that can be simply tailored, reconfigured or extended and applied to a diverse range of uses.

Ecospace buildings are made mainly from sustainable wood from renewable, certified sources. The off-site production improves quality control, efficiency and eliminates waste through recycling. The structures are designed to maximise energy efficiency with high insulation values through substantially thick multi-layered floors, walls and roofs.

Use an Ecospace building as a home office and the commute to your garden will drastically reduce your carbon footprint. They can even integrate renewable energy options including photovoltaic solar panels, ground & air source heat pumps, wind turbines, biomass boilers and log burning stoves.



Ecospace Base - Priceless design for everyone

Ecospace Studios has introduced Ecospace BASE to their range of buildings that is more compact in size and price but has all the professional design, quality and sustainability as their original studios.



SAFRA CHOA CHU KANG (CCK)

DP ARCHITECTS' SAFRA CCK CLUBHOUSE WINS SUSTAINABLE SPORTS & RECREATION BUILDING AT ARCHITIZER A+AWARDS 2024

SAFRA Choa Chu Kang (CCK) is a recreational clubhouse in Singapore designed by DP Architects, in collaboration with its specialist arms DP Engineers (Structure), DP Green, and DP Sustainable Design.

SAFRA Choa Chu Kang Clubhouse offers a suite of health and wellness activities for National Servicemen and their families. It is the first such facility to be sited within a public park, which formed the impetus - Nature, Fitness, and Community - for how the design team conceptualized the clubhouse as a 'Fitness Oasis' that prioritizes the health and wellbeing of both its end-users and the environment.

The design reflects and responds to its park surroundings. Innovative design features were applied to work around the natural elements so as to deliver a sustainable development that also elevates the primary vision of promoting fitness and supporting community wellbeing.

This is first articulated in the building's massing, which is oriented to the park's axis and anchored by a green courtyard. This central green spine maximizes



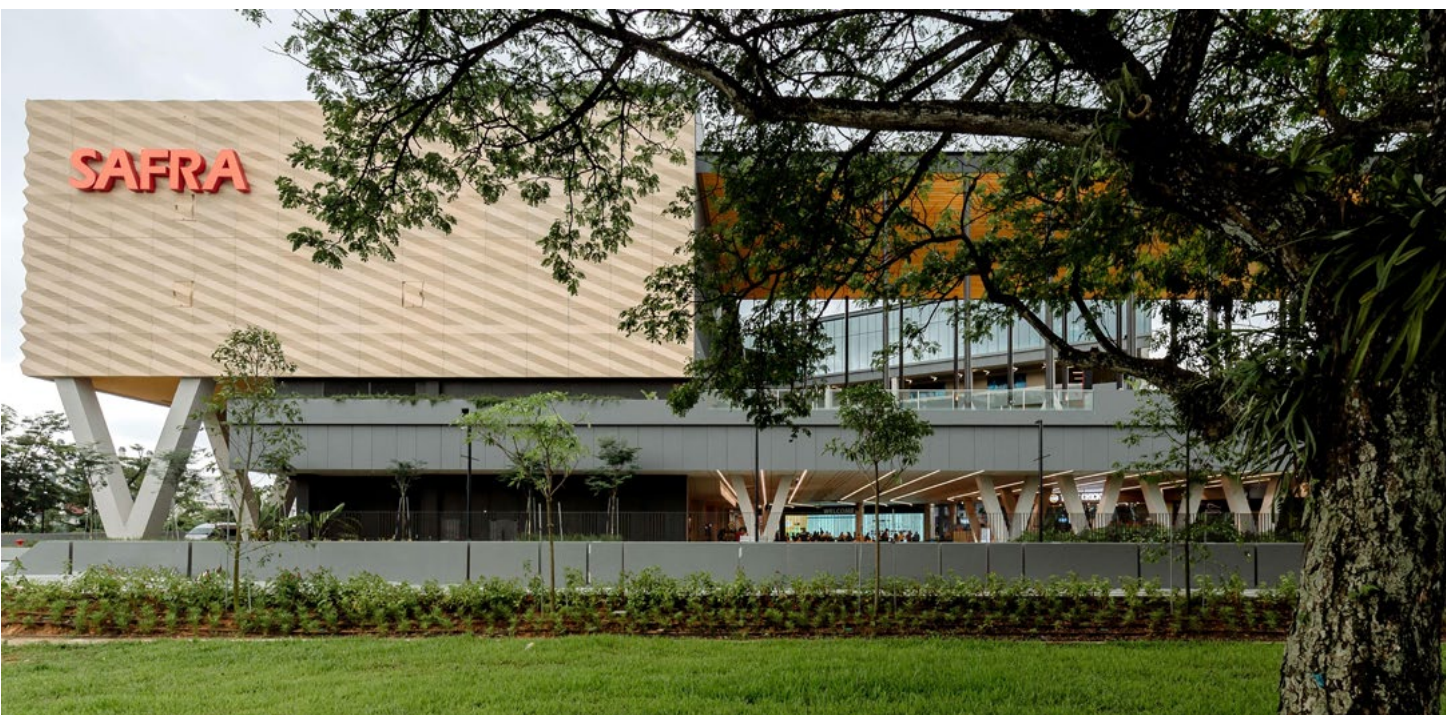
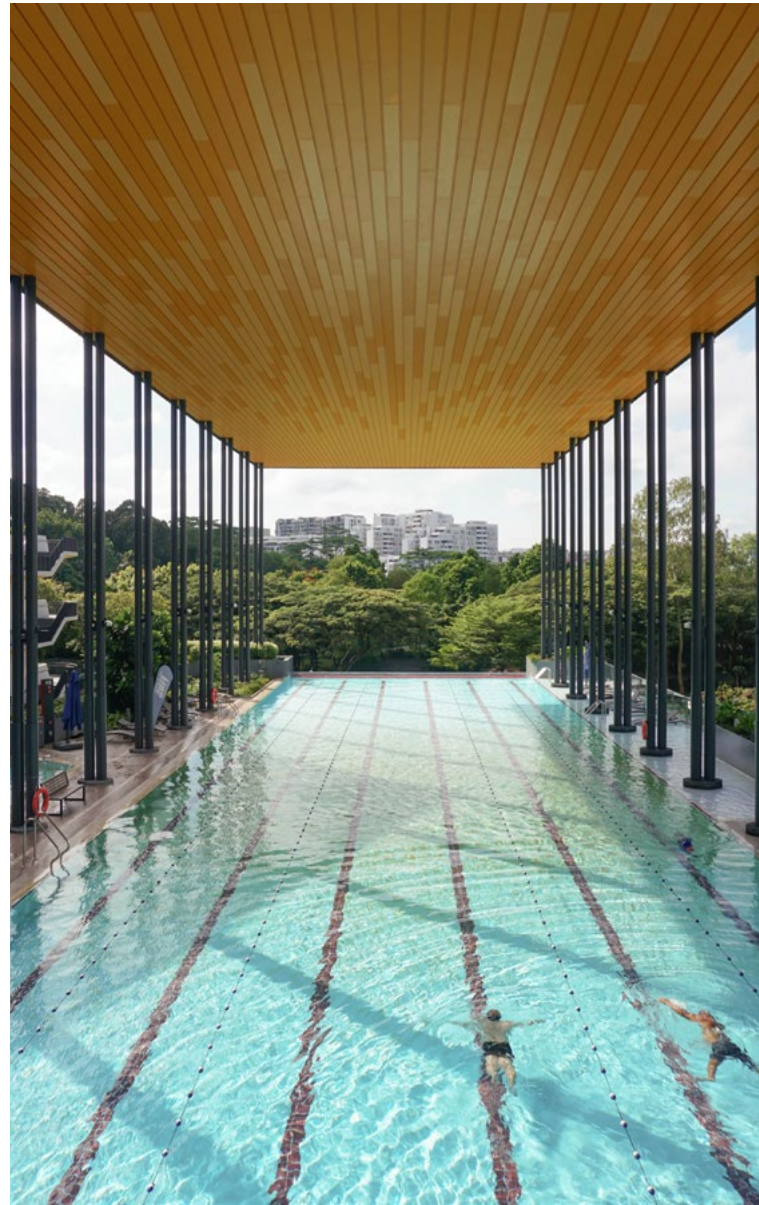
“

Innovative design features were applied to work around the natural elements so as to deliver a sustainable development that also elevates the primary vision of promoting fitness and supporting community wellbeing.



the natural light and ventilation filtering into the clubhouse, reducing the use of artificial lighting and mechanical cooling. It also seamlessly integrates the clubhouse with the park.

Secondly, planters strategically located along the building perimeter, derived through computational fluid dynamics, simultaneously mitigate wind-driven rain along the weather-exposed pathways and harness rainwater for irrigation to minimize water consumption. The incorporation of greenery also alleviates the urban heat island effect.



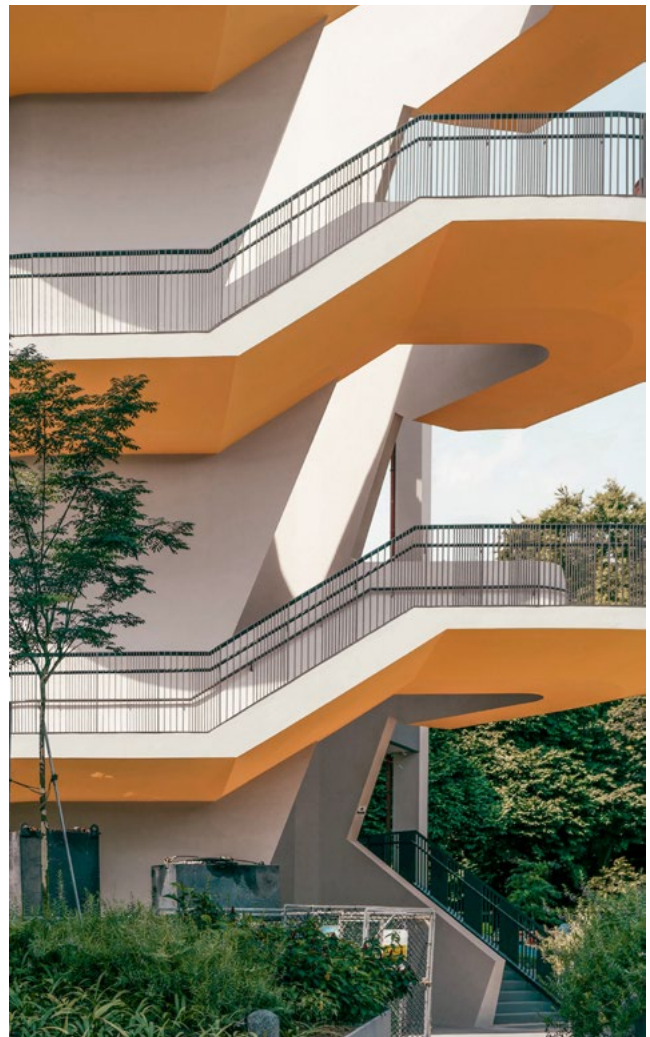


“

SAFRA Choa Chu Kang was constructed using green concrete and recycled steel, which reduced embodied carbon emissions per gross floor area by 23%.

The rich biophilia found throughout SAFRA Choa Chu Kang created proximity to nature that is not often found in urban settings. Creatively interwoven with the clubhouse’s comprehensive suite of amenities, recreational spaces, and communal gardens, they work in synergy to bring people together and foster a strong sense of community, while promoting physical and mental wellbeing. This confluence of nature, community, and lifestyle is further elevated through the integration of biophilia and pedestrianized networks throughout the development.

To further tackle operational carbon, active design strategies were employed. These include the use of energy-efficient LED lighting design, such as automatic zonal dimmers; a heat recovery system that reuses hot water from chiller plants, reducing the energy used for electrical heating; and photovoltaic panels. Employed in combination, SAFRA Choa Chu Kang Clubhouse is able to generate renewable energy and maximize energy efficiency, enabling 42% in energy savings.





Underscoring this is a full-scope, whole life carbon assessment conducted at the early design stage. This was crucial in informing the embodied carbon emissions of the project and ascertaining the use of sustainable materials. SAFRA Choa Chu Kang was constructed using green concrete and recycled steel, which reduced embodied carbon emissions per gross floor area by 23%.

“In understanding the vision that SAFRA had for its Choa Chu Kang clubhouse, we developed an architecture that not only serves its primary purpose as a sports and recreation destination for National Servicemen,” shared Ar. Ng San Son, Director at DP Architects and Design Lead for the project. “We sought to challenge the parameters of this typology and, through strategies for porosity and seamless integration with nature, realized meaningful architecture that achieved authentic sustainable outcomes while promoting community togetherness and wellbeing.”

The clubhouse is also a recipient of the Singapore Building Construction and Authority Green Mark Platinum - Super Low Energy certification, with sustainability badges for outstanding performance in the two areas of Whole Life Carbon and Health & Wellbeing.

Architizer A+ Awards is a prestigious international awards program, and the largest such program celebrating the best of architecture on an annual basis.

www.dpa.com.sg



MINIMAL APPEARANCE, MAXIMUM PERFORMANCE

EXTRAORDINARY COOKING

Built-in extractor hoods deliver the clean uncluttered look and the efficient use of space that homeowners are increasingly looking for. They provide an understated and powerful answer to extraction requirements and, being elegantly concealed within the kitchen cabinetry are the choice for open plan living or kitchens with a minimalist style.

Elica offers a range of high-performance built-in models with extraction rates of more than 600 m³/h, whilst maintaining low noise levels. Many models are very slim, making them ideal for UK specification cabinets and offer super easy installation. Models are available with either duct-out or re-circulating filter options, and in stainless steel, soft black and white glass finishes.



New to the Elica range is SLEEK 2.0 ADVANCE, which features Airmatic with smart sensors that can monitor and react to air quality to set the most suitable power level even when you are no longer cooking. This provides the optimum balance between usage, energy efficiency and low noise levels. Available in 60cm and 80cm widths, it is rated as Energy Efficiency Class A with a boosted maximum airflow of 690 m³/h and comes with strip LED lighting. The LED lighting comes with a dimmer and has Elica's "Tune White" feature so homeowners can adapt the intensity and the warmth of the light to create the desired atmosphere and to match other nearby lighting.

The Elica BOXIN range is ideally suited to "continental" style cabinets without cut-outs. The units disappear completely, effectively replacing the bottom of the wall unit. Within the BOXIN range are four models.



“

Elica offers a range of high-performance built-in models with extraction rates of more than 600 m³/h, whilst maintaining low noise levels.

All available in 60, 90 and 120cm sizes. BOXIN LUX is a powerful and competitive entry level model. BOXIN HE has a very high performance and perimeter aspiration. Where condensation is a problem there is BOXIN DRY, a solution created to resolve and prevent the problem of condensation droplets, and BOXIN Advance has the highest performance and AIRMATIC function.



And for customers on more modest budgets Elica offers the FOLD and ERA ranges of extractors both of which come in multiple versions with different powers and a range of finishes including stainless steel and soft black.

www.elica.co.uk

SANIFLO SANICOMPACT

HELPING AN INSTALLER OVERCOME IMPOSSIBLE TOILET INSTALLATION

Some installers shy away from a challenge, but others just embrace finding solutions to seemingly impossible situations.

Lee Hammond is one such installer. He runs his own business, Hammond & Holmes Kitchens & Bathrooms in Ecclestone.

His customer in Wigan was looking to create a downstairs cloakroom in a hallway cupboard adjacent to the stairs as part of wider renovations to the property.



Lee Hammond

Two contractors had already viewed the job and declared it impossible. Step forward Lee, with his problem-solving skills and he soon realised that all he was needed was a Saniflo. A macerator pump would be able to pump the waste up into the ceiling above, along the kitchen ceiling and into the central internal soil stack. Whilst plumbing in the small-bore pipework to take the waste away from the WC, Lee plumbed pipes for hot and cold water to go back the other way, along with heating pipes to plumb in a towel rail.

Looking at the variety of options in the Saniflo range with his customer, it was agreed that the perfect unit for the converted space was a Sanicompact. This compact, cistern-less WC from Saniflo has an integrated macerator and also takes the waste from a basin; the perfect cloakroom solution. The small footprint of the unit, along with its modern looks and exceptionally efficient and quiet operation ensures it is practical, yet unobtrusive.

"The Sanicompact was the ideal solution for this small space. It has no cistern, and just requires a water outlet and electricity to operate. I was even able to fit a concealed drawer and storage unit under the adjacent stairs as, without the cistern, I had the space to do it. The Sanicompact offered a clean, uncluttered look in a compact spot and since installation a few months ago it has worked perfectly. The customer is over the moon with it."



Even more amazingly, this was Lee's first ever Saniflo installation and he found it so simple to install that he's since recommended Saniflo solutions to other customers that want to turn unused space into cloakrooms and en-suites;

"Since installing the Sanicompact I have been called out to fix three more Saniflo units. They seem to last forever and only require attention when something inappropriate for a macerator has been put down the loo. They are so useful for projects that require a solution when gravity drainage is not available; as in the case of my Sanicompact customer. I do see myself doing a lot more projects using them."

For further information visit www.saniflo.co.uk

BEKO'S LATEST ENERGY-SAVING TECHNOLOGY INSPIRES SUSTAINABLE LIVING

BEKO'S ENERGYSPIN TECHNOLOGY SAVES UP TO 35% ENERGY* ON ALL EVERYDAY WASH PROGRAMMES



Beko Appliance Partners, the dedicated contract specification division of the UK's number 1 best-selling large home appliance brand, have introduced a new selection of A-rated energy-saving washing machines to their contract supply range featuring Beko's new EnergySpin technology.

The technology has been designed to reduce energy consumption by up to 35%* across the machine's most frequently used programs compared to traditional machines, without compromising on performance. This innovative product allows architects to specify a stylish yet unique solution that provides energy saving not only on the machine's 'Eco' settings but also for other daily programs, promoting a more sustainable, efficient and cost-effective lifestyle for homeowners and renters.

The technology, available within a number of the popular brand's 8kg, 9kg and 10kg machines, uses faster-than-usual drum movements to enable detergent to dissolve more quickly than ever before, meaning less heat is required to achieve the same quality clean. From a competitively-priced entry-level 8kg 1400rpm model through to higher specification versions which include additional key functionality such as Beko's AquaTech®, Ironfast and Steam Therapy technologies to further save both time and money, EnergySpin models are available at a range of price points.

Beko's EnergySpin technology is available within the brand's unique RecycledTub® range, where each tub is made of up to 60 recycled plastic bottles transformed

into high-performance materials, further enhancing the sustainability credentials of the product.

To ensure their products are built to withstand the challenges of modern living, Beko appliances are stress-tested to the extreme by simulating real-life scenarios. Washing machine doors are opened and closed 20,000 times to ensure products are durable and robust enough to provide years of dependable service.

In addition to Beko's optional extended 5-year labour warranty, EnergySpin washing machines further benefit from the brand's generous 10-year parts guarantee, reflecting Beko's confidence in the durability and quality of its appliances. In recognition of the quality of the brand's products, Beko was recently named 'Best Value Appliance Brand of the Year' at the Which? Awards 2024.

Beko's award-winning appliances are available to architects and providers of new homes through the company's contract supply division, Beko Appliance Partners, whose experienced and dedicated team specify bespoke solutions tailored to individual project and budget requirements.

Find out more: appliance-partners.bekopl.com

**The energy consumption of Beko EnergySpin programmes are up to 35% less compared to the Beko WTBI041R4A washing machine, without compromising washing performance.*

beko

Stress tested for modern living

door durability test

opened & closed
300,000
times

door durability test

opened & closed
20,000
times

lower basket durability test

tested over
100,000
cycles



**Elevate your clients' new homes with appliances
designed to perform and built to last.**

FREE
10
YEAR
Beko Parts
& 2 Year Labour
Guarantee*
*Terms and conditions apply



Specialist solutions for new homes projects
appliance-partners.bekopl.com

Beko | Your appliance
solution partner



STERLING GARDENS

NISSEN RICHARDS STUDIO COMPLETES LARGEST BUILDING PROJECT TO DATE FOR NELSON LAND

Sterling Gardens, developed by Nelson Land, is a new-build, multi-occupancy housing scheme in Newbury, Berkshire, comprised of 167 apartments, central landscaping and lower ground floor parking. Phase one of the scheme has now completed, encompassing 119 apartments in six of the eight residential blocks, featuring design development and implementation by architects Nissen Richards Studio. The scheme, which covers a 1-hectare site, also included s38 and s278 works to form a new link road and represents the practice's largest ever build project to date.

The homes were originally intended for private market sale only but will now be brought into affordable use following a grant secured from Homes England and



“

One of the biggest changes with the design evolutions to the scheme was an altered focus on materiality.

the local authority. Phase one's 119 homes will include 27 designated for social rent, 62 for affordable rent and 30 as shared ownership properties.

Site Background:

This large two-phase residential development in Newbury is located on a previously industrial site that had historic contamination issues, with close boundaries with both Network Rail and the Highway. In addition to these constraints, the pre-existing site had little drainage infrastructure or capacity and was part of an area review by Thames Water.

The site previously housed the Sterling Cables manufacturing plant and the Newbury Town Gas Company and was a pocket of commercial use within a predominantly residential neighbourhood. The proposed development for 167 apartments became a landmark scheme in Newbury on a gateway site alongside the railway line into the town.

Nelson Land purchased the site in 2006 and sought planning permission to allow a change of use to residential, whilst also committing to the long process of site decontamination. The change of use was permitted and the resultant planning permission also



included a stipulation by West Berkshire Council to create a new road through the site, leading to two new roundabouts in order to help alleviate local traffic stress. The successful incorporation of this road plan was a major factor in planning permission being given on the third application in 2015.

Appointment:

Nissen Richards Studio were appointed to the project in 2018, at which point the site decontamination process had begun. Whilst the massing from the original scheme had to stay in place, the client asked for more work to be done on the building layouts.



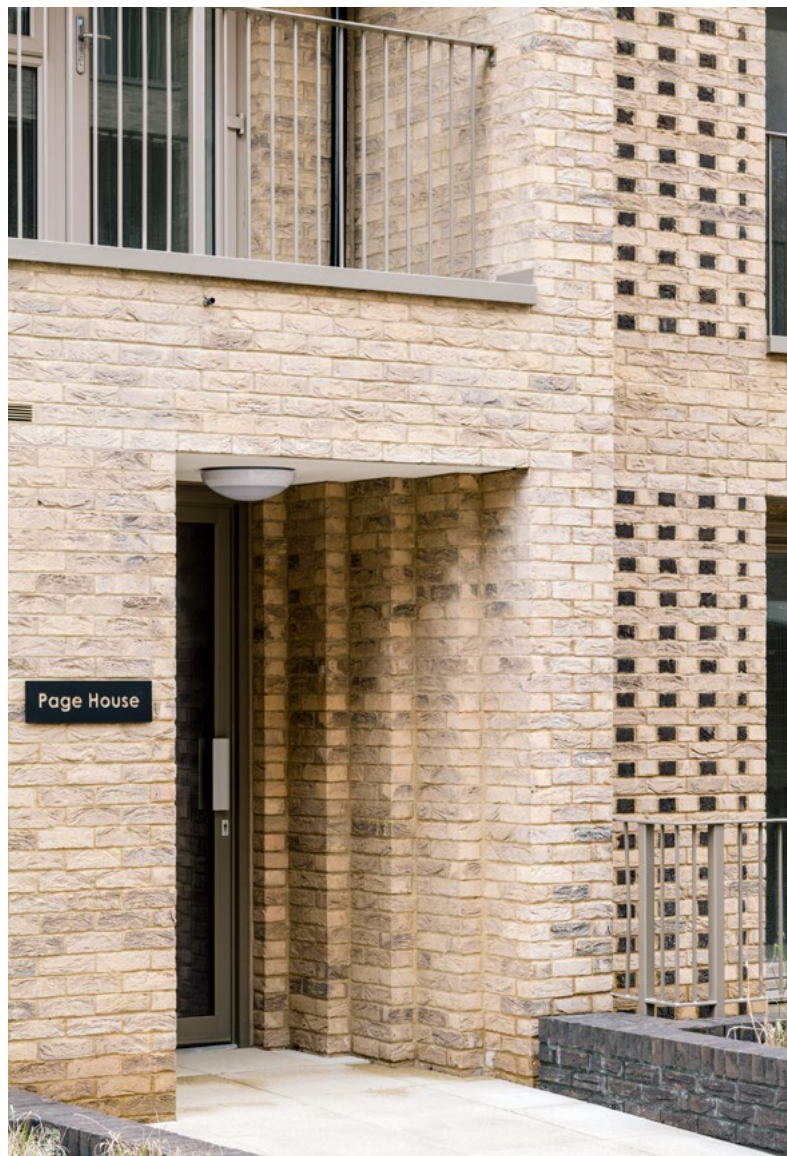
ARCHITECTURAL FOCUS

'As well as updating the elevational and internal layouts, we proposed changing the car park arrangement, replacing the proposed multiple entrances with a single entrance via a manned concierge station that also houses the building manager, and adding in a lift and external wheelchair access. Three venting structures set within the new landscaping arrangement bring light and air into the lower ground car parking area' Jim Richards, Director of Nissen Richards Studio explained.

The practice re-considered the outline of the proposed buildings, ensuring the general massing was similar, but with a series of rationalised changes, including deeper balconies and meaningful window and door reveals, as well as a change to the landscaping in the central gardens, creating more visually playful forms. For the internal layouts of the apartments, the gross internal area was kept the same, but the new formations ensured the net sales area was increased, creating larger living spaces and more efficient common areas.

Materiality

'One of the biggest changes with the design evolutions to the scheme was an altered focus on materiality' Jim Richards added. 'Our approach was to base the designs in a much more contextualised study of local materials, leading to a more textured and expressive exterior treatment, showing a dedication to quality that goes all the way through the scheme.'



Nissen Richards Studio's changes were covered by an initial Minor Material Amendment Application (S73) to the original planning.

Building Layout

The buildings were arranged to go up in two phases with the first covering 119 apartments in blocks C to G and the second the remaining 48 apartments in blocks A and B. The apartment typologies are predominantly 2-bed, with half as many 1-bed properties and a small number of 3-bed in blocks C to G. Blocks A and B contain a number of duplex family units.

The final scheme sees a number of apartment buildings set around courtyard gardens. The homes offer secure parking and a concierge service, rare in new schemes so far from the capital. They feature full-height windows, Amtico flooring, and individually-designed kitchens with stone worktops and Bosch appliances. All apartments overlook the scheme's centrepiece private gardens and have access to private terrace or balcony.

www.nissenrichardsstudio.com



WYKAMOL-TRITON SYSTEMS WATERPROOF CLASSIC CAR 'CAVERN'

An 18-month refurbishment and reconstruction project in Kent is set to create a cavernous basement showroom to house a private car collection in stunning and pristine conditions, where a selection of fully compatible products from the Wykamol-Triton range have been specified to completely waterproof the subterranean structure, being built into steeply rising ground.

The work on the house, in one of the most desirable districts of Royal Tunbridge Wells, is being carried out by London based Cosgrove Design and Build with Structural Waterproofing Contracts being the specialist contractor employing the Wykamol-Triton products including the Sureproof Ultra bentonite carpet, laid across the formation level sub-soil. Then all of the ready-mix concrete is being batched with TT waterproofing admixture, while TT Swell Mastic and TT Waterstop will protect the joints along with Hydrflex Tanking Slurry.

Finally, when the structure is complete, the manufacturer's renowned CM8 cavity drain membrane will line the walls to direct any seepage into floor level channels, before the walls are covered by Gyplyner metal trays, insulation, Duplex boards and a hard wall plaster finish.

Speaking in mid-June, the Construction Director for Cosgrove Design and Build, Dean Downs, commented: "As well as detailed refurbishment work, our company has undertaken a lot of waterproofing installations in-house in the past, but given the scale of this particular

project - constructing a 28 car garage with a 1.2 metre deep swimming pool over the top - we decided to employ a specialist sub-contractor so as to give us the added reassurance of a third-party guarantee. Wykamol Group's area manager provided us with a lot of technical advice and contacts for its approved applicators, who we then went out to tender with based on using the Triton materials. They were all within the price bracket, but we chose SWC, having got on well with their James Hay during initial discussions.

Work is progressing well with the 400 cubic metre slab having gone in last week and the formwork for the walls is currently being erected, ready to be poured in the first week of July, followed by the 'lid' at the end of the month. We are on track to finish on time next Easter with the basement also featuring an office, kitchenette, w.c. and gymnasium."

The BBA approved Wykamol-Triton CM8 and CM20 Waterproofing Membranes - manufactured from high density polyethylene - are routinely specified as an extra layer of protection for the walls and floors of cellars and basements, with their studded form allowing any water to be directed into perimeter channels and then a sump, which is automatically emptied by an electric pump.

The Wykamol Group is able to offer project specific guidance including site support where necessary, while its website 'www.wykamol.com' offers comprehensive technical information on the entire Wykamol-Triton range.

CHOOSING THE RIGHT SUSTAINABLE WOOD FINISH

ENVIRONMENTALLY FRIENDLY WOOD FINISHES

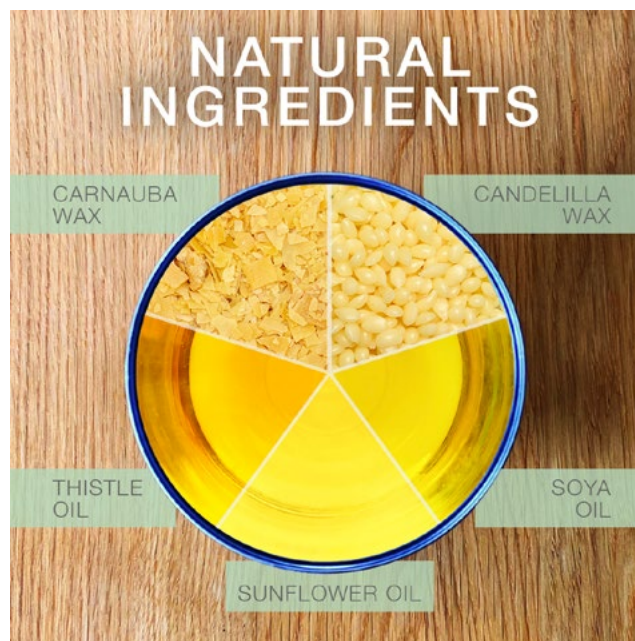
Consumers today are more conscious than ever about the sustainability credentials of the products they buy and use. There is a clear trend for switching to more sustainable and environmentally friendly products. That's why so many people turn to Osmo when looking for a wood finish, as it's not only high-quality, durable and easy to maintain, but it is also made from sustainable ingredients.

A Sustainable Solution

The foundation of Osmo wood finishes is based upon purified and refined natural resources which are carefully harvested into natural oils and hard waxes. Osmo products contain natural vegetable oils to help nourish the wood and retain flexibility. Depending on the product, they might include linseed oil, sunflower oil, soybean oil as well as thistle oil. The interior range of hard wax oil products also contains natural plant waxes carnauba wax and candelilla wax, offering wear resistance and repellency. Furthermore, our extensively cleaned pigments have been approved for use in the food industry.

Choosing the right finish

Osmo's mission is to preserve the natural beauty and durability of wood with only the highest quality and environmentally friendly products. Products made from wood; from flooring to furniture, are made from organic matter, so will continue to need nourishment to ensure the product stays in the best possible condition, both aesthetically and structurally. Our advice is to make use of a high-quality finish, full of natural ingredients to complement the woods properties. This will ensure that the wood continues



“

Osmo's mission is to preserve the natural beauty and durability of wood with only the highest quality and environmentally friendly products.

to breathe and respond well to environmental conditions, removing any possibility of cracking or and blistering.

FSC® Certification

Osmo supports sustainable forestry and works diligently to ensure that the origin of timbers used can be proven. To help improve, and with our natural resources in mind, Osmo has taken on the high standard of FSC®-certification for certain products. In choosing an Osmo product, you can be reassured that the product is not just good for wood, but good for the environment too.

For more information on Osmo and its range of environmentally friendly and sustainable products and finishes, call Osmo UK direct on 01296 481220 or alternatively visit www.osmouk.com

OSMO WOOD FINISHES.

ENDLESS POSSIBILITIES OF COLOUR

Opaque interior and exterior wood finishes can be mixed on demand and available the same day using the Osmo Tinting System in-store.



**FOR
INTERIOR:**



WOOD WAX FINISH

**FOR
EXTERIOR:**



COUNTRY SHADES



**Highly
Repellent**



**High
Coverage**



**Natural
Ingredients**



Breathable

www.osmouk.com

FIND
YOUR
LOCAL
STORE:



JOSEPH ASH GALVANIZING

SETTING THE STANDARD IN CORROSION PROTECTION

Joseph Ash Galvanizing stands out in the field of corrosion protection, offering a level of quality that is unmatched. Our services are tailored to meet the needs of a diverse clientele, which includes large construction companies, fabricators, housing developers, and architects.

Our UK steel finishing industry leadership is rooted in our exceptional customer service and a commitment to technical excellence. We offer a range of additional services, including:

- Collection and delivery
- On-site storage facilities
- Bundling, packing, and labelling of steelwork
- Powder coating for both aluminium and steel
- Comprehensive technical support

With varied bath sizes and lifting capacities across our nine plants, including one of Europe's widest galvanizing baths at our Telford facility, we can treat everything from structural sections to staircases, gates to railings, and flooring to access support steelwork.

Innovative Coating Solutions at Joseph Ash Medway

Our duplex coatings, a combination of hot dip galvanizing and powder coating, are ideal for all steel architectural projects. While each coating provides substantial individual protection, their combined use significantly enhances durability. The additional powder coat acts as an extra barrier, slowing the erosion of the galvanized zinc coating and thereby extending the steel's lifespan. This solution ensures your steel structures are protected for years to come.

Benefits of duplex coatings include:

- Enhanced durability
- Ease of repainting
- Cost-effectiveness
- Sustainability
- Environmental friendliness
- Up to 40 years of guaranteed protection (depending on the powder type used)



Environmental protection is not just a buzzword at Joseph Ash Galvanizing. It's a core value that we live and breathe.

Commitment to Sustainability

Environmental protection is not just a buzzword at Joseph Ash Galvanizing. It's a core value that we live and breathe. We are dedicated to a circular economy, striving to eliminate waste and repurpose resources. Galvanized steel structures and components exemplify circular materials, perfectly embodying the principles of make, use, reuse, remake, and recycle. When you choose us, you're choosing a coatings partner who shares your commitment to sustainability.

For more information about our company and services, and to discuss how we can meet your corrosion protection needs, please get in touch.

sales@josephash.co.uk
www.josephash.co.uk
0121 504 2573



STRATEGIC COLLABORATION

GRAPHENSTONE PAINTS PARTNERS UP WITH BREWERS DECORATOR CENTRES

Graphenstone Paints, one of the most certified sustainable brands in the industry, announces an exciting new distributor partnership with Brewers Decorator Centres, from the start of October. This strategic collaboration will significantly expand the company's reach and make its unique and sustainable products more accessible to a broader audience, marking a significant milestone in its growth.

Graphenstone will showcase its standard range of 96 'House' colours and 'The Treasured Collection', a range of 16 colours inspired by artefacts from the Ashmolean Museum, Oxford.

Brewers will be the first of Graphenstone's distributors to sell its revolutionary new 'peel-and-stick' paint patches. The colour patches are a convenient alternative to traditional sample pots, which can be costly and messy. The new patches are made using 30% recycled materials and, by using tiny suction cups rather than adhesive on the backs, they are also 100% recyclable.

Each patch features a unique QR code, which, when scanned, provides the trade professional or customer with a full-colour explanation, recommendations for finishes, and additional application advice. The new patches will retail at £1.50 each.

The patches will make it easy for anyone from trade decorators, designers and DIY enthusiasts to check what colour they want without having to buy expensive and messy sample pots. This initiative will vastly reduce the amount of paint and packaging that is wasted. They will be available across ten stores initially, including Putney, Barnstable, Maidenhead, Abingdon and Exeter with a larger branch-wide rollout planned.

With a fast-growing roster that includes names such as English Heritage, GAIL's Bakery, The Eden Project, Meta, Grosvenor Estates, and the Historical Royal Palaces, Graphenstone's exceptional range of 'Purifying Paints' is revolutionising the industry.

For architects and other industry professionals, Graphenstone's allure is that it is genuinely different from other paint brands. Its unique formulation means that its paints actively help sequester CO₂, purifying the ambient air as they cure (during the first 30 days following application). Its low-odour, mineral-rich paints combine ancient, non-toxic ingredients such as artisanal lime, and silicates with an innovative 21st-century material called graphene.



Combining these natural and sustainable raw materials with the ultimate in technology greatly enhances the performance of the mineral bases; to deliver a traditional mineral based paint with Class 1 durability.

Graphenstone's founder, Patrick Folkes says, "Whilst often overlooked, air-purifying paints could play a small but vital role in helping the design and building industries meet important ESG goals. It's often the case that it's hard for a smaller brand like ours to compete with the legacy paint giants, and sometimes, it is a challenge to get architects and contractors to try our products for the first time. So, in these cases, I like to remind them that 'normal paint rules apply; we are just the same as all the big-name brands in terms of cost and ease of application, however, we do stand out when it comes to helping them meet their net-zero targets."

Graphenstone prides itself on its low carbon impact, approach to circularity in manufacturing, and waste avoidance.

<https://graphenstone.co.uk>
[@graphenstonepaintsuk](https://twitter.com/graphenstonepaintsuk)

TOUCH

IRONMONGERY LTD



www.atouhofbrass.co.uk

210 Fulham Road, Chelsea London SW10 9PJ

CELEBRATING 40 YEARS

One of London's leading Architectural Ironmongers

Originally called "A Touch of Brass", TOUCH changed their name in 2003 in reaction to advancing market changes in architectural Ironmongery to reflect the broader range of products and finishes that they sell.

In fact today Touch supply 20 different finishes including Brass, Satin Brass, Polished Chrome, Polished Nickel, Satin Nickel, Copper, BMA, Antique Brass, Black, Pewter, Ceramic, leather, Stainless Steel, Satin Stainless Steel, Gun Metal & 4 different shades of Bronze and the list keeps growing. Whatever finish you require, Touch can help you get the right look.

Touch occupy their recently refurbished showroom at 210 Fulham Road, Chelsea, where they stock and display a vast range of their 5,000 products. With a customer base including Architects, Interior Designers, Builders and private Individuals who are interested in the quality end of the Ironmongery market, the company also have a healthy export market to all corners of the world, namely the Middle East, Europe and the Americas.

Touch Ironmongery's owner and founder, Bill Benham, has 42 years' experience in the Ironmongery trade, as does his colleague Jim Haselup. Saleem Qureshi is the newest member of our team and has 21 years' experience, meaning their knowledge is unrivalled in this industry.

The range of products supplied by Touch date from circa 1640 French (Louise XIV) and cover all subsequent periods (Georgian, Edwardian & Victorian), Art Deco and contemporary pieces also make up the product ranges.

Touch showcases the very best of British manufacturing; the best ranges are still produced in the Midlands by craftsmen in factories dating back 200 years or more.

Touch Ironmongery have recently become suppliers for **Designer Doorware (Australia)** Who have beautiful products with a cutting edge design Metal, Wood and concrete. We also have the exclusive rights to sell the **Olaria (Barcelona)** range in the UK.

Olaria make all our bespoke products, they have incredible levels of workmanship.

Touch also sell European manufactured goods which are considered to be of a very good quality.

With trends continuously evolving new and innovative products are constantly under development.

Touch understand that keeping up with the fashion-shifts is imperative in order to provide every customer with the best solution for their requirements.

Ironmongery can be a difficult and complicated aspect of a building project, as a result Touch aim to take this awkward aspect and make it user friendly and clear to understand by offering an on-site service where they carry out a detailed door by door, window by window, room by room Ironmongery schedule, highlighting all requirements and identifying all requirements.

Restoration is a large part of the business Touch will undertake complete Ironmongery refurbishment projects, and can restore old paint covered door furniture to their former glory, looking as good as new again at a fraction of the cost to replace.

For more information about Touch Ironmongery or to arrange a showroom visit please call 0207 351 2255 or alternatively visit www.atouhofbrass.co.uk



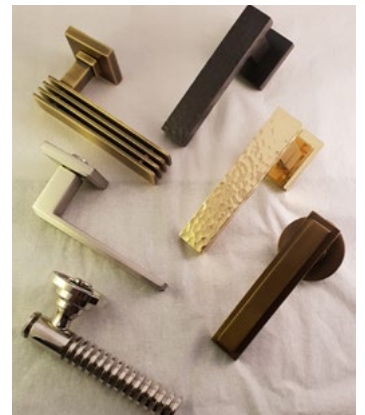
BRITISH & EUROPEAN MANUFACTURERS SUPPLYING THE FINEST QUALITY IRONMONGERY

Touch combine traditional skills with modern manufacturing techniques to produce the most beautiful, quality fittings, built to stand the test of time.

As well as specialist bespoke items, Touch supply over 1000 products, available in 23 different finishes to furnish high end residential and commercial properties, royal palaces, government houses, historic castles and stately homes.

Olaria, available from Touch Ironmongery

www.atochofbrass.co.uk
& www.olariabarcelona.com





HES2 Concealed Hinge. Innovation, Reinvented

At Sugatsune, product innovation is never the end of a journey. Every breakthrough is the start of a new one. For us, innovation is the drive to never settle for what you already have. It's a state of mind, the urge to push even further.

30 years have passed since we first launched one of our proudest innovations, the HES concealed hinge. A genuinely revolutionary concept, the original HES3D reimagined the very concept of a concealed hinge, based on a reengineered classic hinge design, and in the process opened the door to previously inaccessible use cases for concealed hinge technology.

The HES range has become one of our best sellers and a flagship product, winning multiple awards along the way. But we haven't sat on our laurels to admire our achievements. The innovations have kept on coming.

Nowadays, there's an HES hinge for practically every architectural application. And with the latest HES2 model, we've made installation simpler and more accessible than ever.



Pivot Away

The big breakthrough with the original HES design was the removal of the pivot arm that the previous generations of concealed hinges had relied on. The pivot arm meant concealed hinges could be installed directly to the inside panel of a cabinet, without the need for a frame. Inset door types could be accommodated.

But there was a downside. Concealed hinges worked for cabinets. But what about interior two-way doors? You couldn't 'conceal' a hinge in the same way by hiding it inside a cabinet. And often door frames were too narrow for the elongated arms anyway.

By reimagining the classic butt hinge so the central barrel tucks away in recesses within the footprint of the hinge itself, the HES design is compact enough to fit on a typical door frame, but folds away in on itself so it is totally out of sight when the door is closed.

What is more, with the removal of the pivot arm, the HES design is stronger and more robust. As well as being suitable for interior doors, it can handle heavyweight doors up to 125kg. There are now HES hinges available for everything from the smallest cabinets all the way up to the largest interior doors, making it the only concealed hinge range on the market suitable for all architectural applications.

Simplicity on the Surface

For all the aesthetic and functional benefits of the original HES design, it came at a cost. Door hanging is a tricky job at the best of times. With the original HES models, you had to mortise both the door and the frame/cabinet panel.

The big step forward with the HES2 version is surface mounting. You only have to mortise the door, halving the time and effort it takes to install. On the frame, it's just a case of screwing on a plate.

For simplicity and convenience, all HES hinges separate. Once the door is mortised and the door plates are installed, we provide templates for pre-drilling the frame to further support speed and accuracy. The frame plate is clipped into the door plate before being screwed



onto the frame. Once mounted, adjustment screws allow for vertical and depth alignment of up to 3mm for a perfect finish.

The surface mounting on the frame also means that the HES2 can also be fitted to slim framed or even frameless doors where there is not enough wood to mortise into. So even more door types can benefit from the flawless aesthetic of a concealed hinge.

The HES2 continues the tradition of pioneering concealed hinge concepts Sugatsune began 30 years ago. Our 3D-adjustable surface-mounted concealed hinges remain the only products of their type available on the market.

Not that the HES2 is alone. At the same time we launched this hinge, we also unveiled the HES1. Designed for frames as little as 8mm in width, the main selling point of this version is the incredibly snug fit between door and frame/wall. While not technically concealed - the mortising on the frame includes cutting out the front elevation so the mounting plate is visible in profile when the door is closed - the flush finish means it is easy to make the plate all but unnoticeable for a pristine effect.

One thing we can't hide at Sugatsune is our dedication to pushing the boundaries of functional and aesthetic design. 30 years on, the HES range is a dynamic concept that we keep evolving. It already provides simplicity and tasteful convenience to most types of cabinet and architectural doors. Where next?



Since 1930

Hinge Innovation Door Evolution



Only Sugatsune



Japanese manufacturer of
LAMP and **ZweiL**
branded products

FURNITURE, ARCHITECTURAL,
MARINE AND INDUSTRIAL HARDWARE

Unit 635, Wharfedale Road, Winnersh
Triangle,
Wokingham, RG41 5TP
Tel: 01189 272 955
Email: sales@sugatsune.co.uk
www.sugatsune.co.uk

GARADOR'S TRIED AND TESTED CARLTON PROVES POPULAR

With a classic design that suits so many different styles of property, Garador's Carlton up & over garage door is one of the most popular garage doors on the market.

The Carlton offers exceptional value for money with a tried and tested design that's both long-lasting and low maintenance, along with a competitive price point. Constructed from high grade galvanised steel, the crisp vertical swage complements modern architecture, but also sits well on traditional builds or alongside other garage doors where there are blocks of garages in a row. The door has a rivet free design meaning the surface of the door panel is smooth and a durable powder-coat paint finish protects the door from the elements.



Garador's Carlton comes in a choice of 20 standard colours, including the ever-popular Anthracite Grey (RAL 7016) plus is available in the full range of sizes up to 5500mm wide

including standard, made-to-measure and double door sizes.



To find out more about the Carlton or any of the Garador range, call 01935 443722 or visit www.garador.co.uk.

THE BROADWAY BENEFITS FROM INVISIBLE ACCESS AUTOMATION

The Broadway is a mixed-use development in Westminster, London. Contributing to the beautifully presented interior, TORMAX was contracted by Focchi Ltd to deliver invisible automation to over forty swing door entrances, concealing their advanced iMotion 1401 operator into the floor space below each door."



Where aesthetics is a high priority, such as at The Broadway, our invisible automation for swing doors helps maintain clean and contemporary lines within a room," said Simon Roberts, managing director for TORMAX UK Ltd. "In addition to our underfloor operator, we offer a door drive that can be concealed within the lintel above the door."

Focchi Group oversaw the entire façade package for the development and TORMAX, with over 60 years expertise in entrance system design, manufacture, installation and maintenance, was well placed to deliver the invisible door automation. The iMotion range of automatic door operators has been developed in-house, at the TORMAX HQ in Switzerland, and includes solutions for sliding, folding, revolving and swing doors.

sales@tormax.co.uk | www.tormax.co.uk

MORE CHOICE, MORE PACE

GEZE UK is delighted to announce several new products have been added to their range of pedestrian traffic control systems, PACE, to give even more choice when selecting solutions that offer safe and efficient control of pedestrians in and out of buildings. All products are supplied and installed in accordance to EN 17352:2022 - the standard for powered turnstiles and speed lanes that was harmonised in August 2023.

New to the range are the SL 550 and SL 900 speed gates with stylish folding high gates and a reliable, robust design that guarantees effective protection of the building making them ideal for banks and offices.

The popular SW 100 range has been extended to include two extra wide options. The SW 100 Wide and SW 100 High Glass Wide both offer a passage of 1200mm perfect for ease of carrying luggage and wheelchair access.



OX S, OX M and OX XL are a new series of aesthetically pleasing turnstiles with ergonomic design and efficient control - ideal for high traffic flow locations.

In the full height category, the HW G / NG with glass leaves and side panels perfectly combine modern aesthetics and functionality for even greater security with high visibility.

Said Andy Howland, Sales and Marketing Director for GEZE UK "These new products offer even

more choice, several of which are like nothing else in the market. Together with GEZE automatic doors and the PACE range of access control we offer specifiers a complete package to control the flow of people in and around a building ensuring safety and security at all times for those using the building".

To find out more on PACE or GEZE UK's comprehensive range of automatic and manual door closers visit www.geze.co.uk or for a PACE brochure email info.uk@geze.com.



CLEMENT[®]
creating light...beautifully™

STEEL WINDOWS | DOORS | SCREENS | ROOFLIGHTS

clementwindows.co.uk
01428 643393

GARADOR

The Garage Door People

Precision Engineered
and Fully Insulated
Sectional Garage Doors

Choose from the full range of garage doors.
Visit us online at www.garador.co.uk

**CALL
01935 443722
TO DISCUSS
YOUR PROJECT**




- 1** 42mm fully insulated door sections (U = 1.30 W/m²K).
- 2** Rubber seals on sides, floor and fascia of door.
- 3** Full drive-through width and height.



Furniture, Architectural and Industrial Hardware from SD Products

SD Products Ltd is a third generation family owned business with over 40 years of experience as a stockist distributor of specialist fasteners. The corner stones of our business are Quality Products at Competitive prices with Service and Supply requirements tailored to our customers' needs.



We are proud to hold an extensive range of premium precision engineered components, supplying the furniture, architectural, industrial and marine sectors. Professionals from across a wide range of industries – architects, builders, cabinet makers, interior designers and manufacturers trust in us to deliver the quality and reliability they expect.

Our product lines make extensive use of stainless steel, a material favoured by engineers and customers alike for combining strength and durability with an attractive polished finish. Simple, contemporary and effective, stainless steel is the perfect reliable, low maintenance choice for everything from straightforward decorative hardware to more complex mechanical components. We are increasingly rolling out distinct and eye-catching finishes, including the highly popular matt black.

www.sdproducts.co.uk

FLUSHED WITH SUCCESS

Doors are just simple entrances or exits to a room, right? As any architect will know they are a key part of the design process. They provide access and flow to a space if used in the right way or be a hindrance if not.

One way to maximise the space of a living area is with a sliding pocket door that fit snugly into the stud work. There are other options available though that can create a 'Wow' factor. With any design you want to make a statement and it is the clean finish of ultra-flush doors allow you to really enhance the look of room even if you can't see them.

Rocket Door Frames introduced its ULTRA flush doors a couple of years ago and are proving to be extremely popular. Wall murals, paint effects or wallpaper can continue uninterrupted. Alternatively, you might want to make the door stand out in an eye-catching and interesting way. Visually that is obviously going to appeal to designers and architects but there is more to the ultra-flush door product than that.

A key part of the ultra-flush appeal is the simplicity of installation. Rocket ULTRA's kit comes with only four screws to assemble the frame and is designed for use with the readily available 44mm flush panel doors.

Made of extruded aluminum the framework has 'hooked' edge profiles for plaster retention. Each single frame can be installed as push or pull, left or right opening thus offering structural as well as visual flexibility.

All Rocket ULTRA systems are supplied pre-routed with a magnetic lock and strike plate which can be specified as a latch, bathroom thumb turn or cylinder lock. Completely invisible 3-way adjustable hinges for perfect shut lines are also part of the package.

What's more, the ULTRA Flush doors are fully tested and approved for 30 minutes fire protection FD30. They come supplied with their own intumescent kit that fits into the frame and not the door saving time and money.



A key part of the ultra-flush appeal is the simplicity of installation.

Turnaround times are so important when planning a delivering for an eager client. Rocket Door Frames know this and is why we keep our full range of ultra-flush door systems in stock. This means they can be delivered to a UK location in 2-3 days, far quicker than other suppliers who may need to order them in.

Concealed door frames look fantastic in homes, offices, hotels, restaurants to create a sophisticated and polished look that really stands out. They can even enhance the flow of foot traffic within the space by eliminating visible obstacles like door frames.

Interior design can be very personal but it is also about making a statement. Whether it is in the home or a commercial setting, it needs to be both stylish and practical. A Rocket ULTRA Flush door allows you to achieve exactly that.

If you are an architect or an interior designer and you want to make the most of your design ideas consider including flush to wall doors as part of your scheme. Take a look at the Rocket Door Frames website or call 0330 9980617 to discuss all the options available.

www.rocketdoorframes.co.uk





FD30
APPROVED



ULTRA FLUSH DOORS

Is this the Door Design you
are looking for?

Flush to wall doors, push or pull, left or right
opening at a very affordable price.



DIRECT
SALES



LIFE TIME
WARRANTY



NEXT DAY
DELIVERY

 **Rocket Door Frames**

info@rocketdoorframes.co.uk
www.rocketdoorframes.co.uk
0330 9980 617



A NEW ERA

B720 TURNS SIMON'S OLD FACTORY TO SWITCH, THE COMPANY'S NEW HEADQUARTERS

The Spanish architecture studio b720 Fermín Vázquez Arquitectos leads the intricate and symbolic rehabilitation and conversion of Simon's old factory in Poble Nou to its new global corporate headquarters. Together with interior design studios Estudi Toni Arola, Estudi Jordi Tamayo, and Katty Schiebeck Studio, and lighting design studio MMAS Lighting, they helped the electric products company enter its new era after more than 100 years of history and legacy.

The rehabilitation of the old Simon factory to house the new Simon Corporate Headquarters arose from the need to unify the more than 350 employees of the two previous office locations in Barcelona under



“

The reconversion of the building contributes to the regeneration of the urban environment of this part of Poble Nou, now transformed into the new 22@ technological district.

the same roof. The project is based on the idea of preserving the essence of the existing construction, a concrete industrial building from the second half of the 20th century, but introducing elements that allow to identification of the new use, and to place the new Simon Corporate Headquarters in the center of the technological development of the city. The Headquarters is symbolically named SWITCH, the abbreviation for “Simon Worldwide Innovation Talent Community Hub”, and also a nod to the electrical switch, one of the trademark products of the company.

Regeneration of the urban environment

The reconversion of the building contributes to the regeneration of the urban environment of this part of Poble Nou, now transformed into the new 22@ technological district. The recovery of the old building thus becomes a valuable link between the preservation of the neighborhood’s industrial memory and its willingness to be transformed: What was once a building relatively closed off from the city becomes a hub of activity that opens to its





immediate surroundings. Thus, the first floors are open to public use, while the upper floors house the workspaces, which are open to the city through large glazed openings that are more than just windows; their abstract presence, depth, and play of reflections is complemented by the desire to serve as urban infrastructure, equipped for the installation of ephemeral assemblies, thus enhancing participation in city events such as the festival of illuminating arts "Llum BCN".

Quality of life & efficiency

SWITCH aims to be a benchmark for quality workspaces in Barcelona, as well as for the refurbishment of existing buildings and their adaptation to the highest quality standards, serving as an example for the future reconversion of many

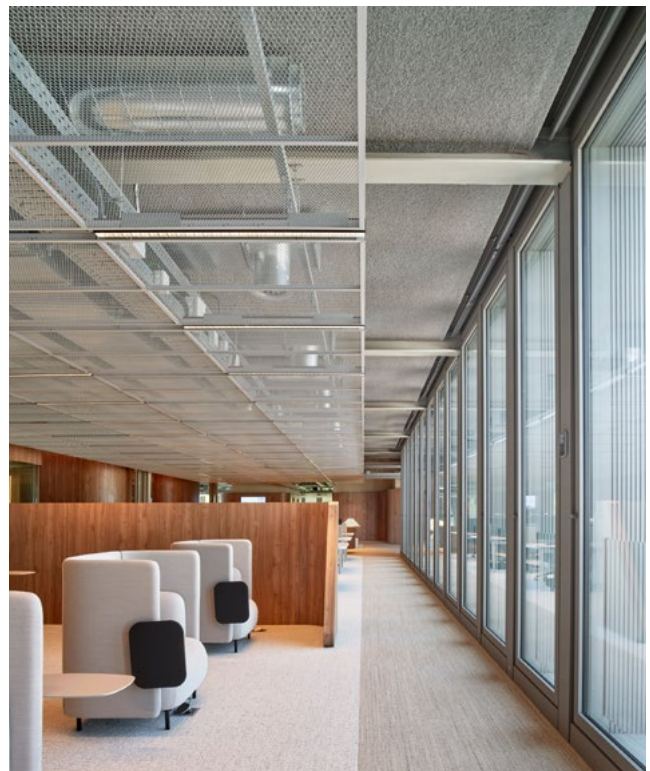
other industrial buildings. It takes advantage of the opportunities of the original construction, an open and bright space, complemented with a new configuration of routes and vertical cores, high-performance facilities, and equipment, and the use of the roof as a playful space for gardens and renewable energy collection. Intelligent management of the building optimizes its efficiency, incorporating digital tools for the shared use of workstations, meeting rooms, common spaces, or access to mobility.

Sustainability & inclusiveness

The rehabilitation of the old building revalues and prolongs the useful life of the peculiar reinforced concrete grid that constitutes its structure and façade. The old obsolete building thus becomes a building with maximum efficiency, a fact that is expressed in the façade, where the treatment of the openings combines the concrete framework, repaired in a careful but visible way, without hiding the signs of the passage of time, with complementary elements in the form of a technological "cassette" inserted within the grid. The contrast between these elements highlights the configuration and materiality of the structural system, while providing an optimal level of natural light, solar protection, and thermal insulation.

The result is a building with a low environmental impact due to the reduction in the carbon footprint of existing materials with a long-life cycle, the new energy efficiency, and its contribution to urban regeneration and improvement of the territory. The building is in the process of obtaining LEED Platinum and Lean2Cradle certification.

www.b720.com/projects/



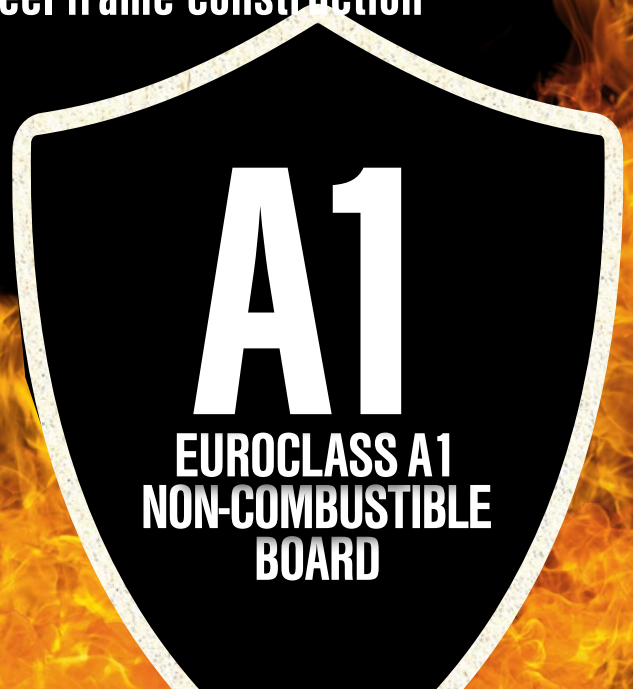
MANY – “AS BUILT FIRE TESTS”
ENABLES COMPLIANCE WITH B.S.A.

Magply

A1 NON-COMBUSTIBLE BOARD

TESTED AND CERTIFIED FOR

- ▶ Timber frame construction
- ▶ Spandrel panels
- ▶ Modular build
- ▶ Rainscreen cladding
- ▶ Render carrier board
- ▶ High performance dry lining
- ▶ Tilebacker
- ▶ Fire resistant floors and ceilings
- ▶ Passive fire protection
- ▶ Steel frame construction



magply.co.uk | 01621 776252 | sales@magply.co.uk

FIRE GLASS UK

YOUR TRUSTED PARTNER IN FIRE-RATED AND SPECIALIST GLASS SOLUTIONS

In the rapidly evolving world of architecture and construction, having the right partners is crucial to achieving excellence. At Fire Glass UK, we pride ourselves on being the market leader in specialist glass, offering unparalleled customer service and an extensive range of products designed to meet the diverse needs of architects, specifiers, and construction professionals.

Comprehensive Product Range with Nationwide Reach

Our comprehensive product range is tailored to the unique demands of the construction industry, ensuring you get the glass you need, when you want it. With our nationwide branch network, Fire Glass UK is equipped to supply your project with fire and safety glass solutions, all at competitive prices. Whether you require supply-only services or full installation, our team is ready to deliver.

Accreditations and Compliance: A Commitment to Safety and Quality

Safety is non-negotiable in construction, and at Fire Glass UK, we understand that there is no second chance to get it right. We hold multiple accreditations, including Certifire, FIRAS, CHAS, ConstructionLine Gold, and ISOs 14001, 9001, along with CPR for EN 1279 and 12150. Our in-house production and manufacture of IGUs are accredited to Attestation Level 1, providing our customers with confidence in our compliance, test evidence, and overall quality.

Supporting You with Technical Expertise

Understanding the critical role that glass plays in both the performance and aesthetic appeal of a building, we are committed to ensuring that our products not only meet but exceed industry standards. Our dedicated technical support team can assist you with any project-specific queries, ensuring that your specifications are



Safety is non-negotiable in construction, and at Fire Glass UK, we understand that there is no second chance to get it right.

detailed, technically accurate, and up-to-date. We work closely with you to find the right product that aligns with your design vision and performance requirements without compromising safety or budget.

Additional Resources and Support

To further support our customers, Fire Glass UK offers a range of interactive online resources, continuous professional development (CPD) training, and testing facilities. As a member of the Glass and Glazing Federation (GGF), we are committed to staying at the forefront of industry developments, providing you with the most current and innovative solutions.

Choose Fire Glass UK for Your Next Project

When you choose Fire Glass UK, you're choosing a partner dedicated to excellence in every aspect of fire-rated and specialist glass. From our comprehensive product range and technical support to our extensive accreditations and commitment to safety, we are here to help you achieve your project goals with confidence.

For more information or to discuss your specific requirements, reach out to our dedicated Technical Support team or visit one of our branches. Together, we can create your building fire strategy.

0121 667 9089
info@fireglassuk.com
www.fireglassuk.com



TECHNICAL FIRE SAFETY GROUP





BOOK YOUR CPD TODAY
fireglassuk.com/cpd-seminar/

Fire Glass

UK

TECHNICAL FIRE SAFETY GROUP

YOUR VISION IS OUR BUSINESS

BRINGING GLAZING FIRE & SAFETY GLAZING PLANS TO LIFE.



TRUSTED FOR USE AT:
CADBURY COLLEGE, BIRMINGHAM

NATIONWIDE SERVICE.



MIDLANDS

0121 667 9089



NORTH

0161 532 8371



SOUTH

01206 805 922



EAST

01773 712 920



WEST

01174 528 800



SCOTLAND

0131 526 4141



INSTALLATION

0121 667 9089



firas certifiire



#TRUSTTHEEXPERTS

0121 667 9089
WWW.FIREGLASSUK.COM



SCAN ME

AFFORDABLE HOMES FOR THE FUTURE

WE'VE SPENT TIME & MONEY TO SAVE YOU TIME & MONEY

Following several years of development and testing, EnviroEcoWall is excited to announce that they have achieved the prestigious KIWA BDA Agrément certification. Derek Ward, MD of EnviroEcoWall, commented, "This certification not only reaffirms our dedication to excellence but also highlights our mission to develop affordable housing options for young people and first-time buyers."

Addressing the Affordability Challenge

The housing market is currently facing many significant challenges, not least of which is affordability for young buyers. EnviroEcoWall are committed to tackling this issue through their Enviro Eco Buildings concept. This approach prioritizes innovative design while ensuring that housing remains economically accessible, enabling the next generation to realise their home ownership dreams.

Innovative Construction Techniques

Their fireproof and flood-resistant construction methodology is a game-changer in the industry. During product development, they constructed a two-storey house in just a few days. Once fully furnished, they intentionally started fires in the ground-floor living room and a first-floor bedroom. Remarkably, under controlled conditions, architects, engineers, and council officials could safely navigate the building during the tests, touching walls and doors, demonstrating the superior safety of the structure. The house was restored and ready for occupancy in just four hours—all without any lingering smell of smoke.

Build in days, not weeks or months

One of the most compelling aspects of EnviroEcoWall buildings is their speed of construction. A bungalow can be built in as little as four days, while a two-storey home can be completed in five to six days. This rapid turnaround not only reduces costs but also addresses the urgent need for housing solutions being provided in a timely manner.

Key Benefits of EnviroEcoWall

- **Enhanced Safety:** Working with Envirograf®, the buildings have been engineered to the highest safety standards and are completely fireproof, providing critical time for occupants to evacuate in emergencies.



- **Energy Efficiency:** Designed with energy conservation in mind, our structures lower heating and cooling costs, making them more affordable for homeowners.
- **Durability:** Built to withstand the test of time, our buildings are ideal for new constructions and retrofit projects alike.
- **Strict Quality Control:** The off-site fabrication process ensures precise dimensions, reduced build time, and minimises on-site waste.

A Vision for Collaborative Innovation

Mr Ward went on to say, "We have developed a diverse range of buildings—from bungalows and houses to blocks of flats and school classrooms but now, with the ongoing housing crisis and the pressing demand for affordable options, our latest designs are tailored to help young buyers and first-time homeowners. However, EnviroEcoWall's flexible design capabilities also empower architects to create customised affordable houses that can be completed both quickly and economically."

He continued, "EnviroEcoWall is eager to partner with architects, builders, and property developers to explore collaborative solutions that address the urgent need for affordable, energy-efficient housing. By focusing on innovative methodologies, we aim to pave the way for a brighter future for aspiring homeowners. Let's work together to make a difference in the housing landscape!"

For more details call 01227 286410 or email sales@enviroecowallpanels.com

ARE YOU LOOKING FOR A SOLUTION TO PROVIDE AFFORDABLE HOUSING THAT'S QUICK TO BUILD AND REALLY IS AFFORDABLE?



LOOK NO FURTHER!

If you have the land, we have the solution



- ◆ Built-in protection from fire & flood
- ◆ Excellent thermal and acoustic qualities
- ◆ Endless design flexibility
- ◆ Speedy construction
- ◆ Low waste construction
- ◆ Comprehensively tested and certified by KIWA



For more information, please contact

+44 (0)1227 286410

sales@enviroecowallpanels.com



NUAIRE RELEASES CPD ON HIGH TEMPERATURE AXIAL FANS & VSDS

Indoor air quality and ventilation manufacturing specialist Nuaire is pleased to announce its latest CPD, which addresses High Temperature Axial Fans & Variable Speed Drives (VSDs).

This new CPD has been introduced to clearly explain the standard 'BS EN 12101-3:2002 Smoke and heat control systems - Specification for powered smoke and heat exhaust ventilators', and advise on compliance.

Simon Plummer, Nuaire Axials Divisional Manager and one of the UK's leading fire safety experts, has written the CPD to provide clarification: "Frequency converters have been permitted for use during a fire event since 2015, enabling dual mode fans (those used for both day-to-day ventilation and high temperature smoke extraction) to be controlled by VSDs, even during fires. Prior to this, the VSD had to be bypassed during a fire event, with the fan running at 100%. However, there remains some confusion in the industry about how high temperature fans and VSDs can be certified and used for the various smoke

applications within buildings. Our new CPD directly addresses this, explaining the standard in detail and the flexibility it offers Consultant and Smoke Designers when it comes to designing solutions."

In addition to explaining the standard, the CPD covers the test conditions that high temperature axial fans and VSDs must undergo, before moving on to best practice in high temperature fan design. The importance of opting for a fan/VSD that has been tested as a package is stressed, along with an explanation of why a VSD "Fire Mode" (smoke clearance function) is needed.

As with all Nuaire CPDs, the High Temperature Axial Fans & VSDs CPD can be delivered free of charge at Nuaire's head office in Caerphilly, South Wales, online via Teams, or at a customer's premises. All those attending will gain full CPD credits and certificates.

To book the new CPD, go to www.nuaire.co.uk/support/continuing-professional-development/high-temperature-axials-and-vsds.

Top Selling Slimport Circular Vision Frames



Now Available in Convenient Kit Form

- Everything you need for the installation of your flush-fitting circular vision frame
- Complete tested kits
- For doors or partitions
- Includes circular vision frame, laminated safety glass & glazing tape
- Fire rated or non-fire rated packs
- Available in door cut-outs: 250mm, 350mm and 450mm



Ideal for restaurants, bars, cafes & other public buildings

VISIT US AT ZEROPLUS.CO.UK OR CALL US ON: 01785 282910



KEEP YOUR PROPERTY SAFE WITH MY FIRE DOOR!



We specialise in:

- Fire Door Surveys: Ensuring compliance and pinpointing vulnerabilities.
- Fire Door Repairs: Swift, reliable fixes for optimal safety.
- Fire Door Installations: Upgrade to the highest standards.

Protect your property, protect your peace of mind.

Contact us today!

01202 124060 | contact@myfiredoor.co.uk | www.myfiredoor.co.uk



Counter-balanced for **ease-of-use**

Highly insulated hatch to **keep in the warmth** (U value of 0.63 W/m²K)

High strength wooden ladder (load rating of 180 kg/tread)

6-point latching system for an **airtight seal** (class 4)



Explore our range of Passivhaus certified loft ladders...

www.premierloftladders.co.uk/passive

0345 9000 195 | sales@premierloftladders.co.uk

Certified Passive House Component



3 DAYS, 300+ BRANDS AND 30% BIGGER

WHY YOU NEED TO VISIT THE FLOORING SHOW THIS SEPTEMBER

Earlier this year The Flooring Show announced its expansion into Hall Q, a decision that sees the show grow by 30%. Such growth is testament to the strength of the flooring industry and cements the show as the UK's largest and market leading flooring trade event.

Open to retailers, contractors, fitters, architects, interior designers, specifiers, project managers, the list goes on... this is an unmissable event for anyone within the flooring industry. This year's dates are set for 15-17th September, at its much-loved home of the Harrogate Convention Centre, and with over 300 brands exhibiting, The Flooring Show 2024 is the ultimate destination for flooring professionals.



“

Open to retailers, contractors, fitters, architects, interior designers, specifiers, project managers, the list goes on... this is an unmissable event for anyone within the flooring industry.

Find out more about what the show has to offer:

2024 Exhibitor Line Up

The Flooring Show's exhibitors span the breadth of the flooring industry, attracting manufacturers and suppliers of carpet, laminate, LVT, wood, vinyl, cork, grass, SPC, as well as underlay, adhesives, software, machinery and tools. The names that visitors know and love will be returning to support the three-day show, bringing with them new ranges across all types of flooring for the contract and retail markets. Suppliers include Abingdon Flooring, Adam Carpets, Associated Weavers, Ball & Young, Bostik, Cavalier Carpets, Cormar, COREtec Flooring, Kellars, Furlong Flooring, F Ball & Co, Hugh Mackay, Interfloor, Lifestyle, Likewise, Penthouse Carpets, Tarkett, Westex, Victoria Carpets & Design Floors, to name just a few.

Alongside the big names returning to the show, there are plenty of new names joining us this year including Floormart, Bjelin, T-Build Floors, Evolve Flooring, Fablon Fine Carpets & Rugs, Juvern, Peri UK, Floor Master, Tuftco, Rinos, Alsa Flooring, to name just a handful.



THE FLOORING SHOW

Design Spotlight

For years, The Flooring Show has attracted premium flooring brands, with Harrogate ranked the most exclusive place to live in Yorkshire and ranked in the top 25% most expensive cities in the world. Located in the newly accessed Hall Q, the Design Spotlight has been launched in response to the demand from architects, interior designers, property developers, and specifiers in search of the most unique, design-oriented residential and contract flooring solutions on the market.

Event Director, Alex Butler, says "The Design Spotlight is a feature we've wanted to introduce for a couple of years now, and the expansion into Hall Q allows us to do just that. We want architects and interior designers to know that The Flooring Show caters to them as much as it does to our contractors and fitters."

Fitter of the Year

This year NICF's 'Fitter Of The Year Competition' returns with a focus on carpet and the competition will take place over the Sunday and Monday of the show. The winner will be announced at 4pm on Monday 16th and receives a cheque for £2000, a trophy and some great prizes including a selection of tools, and one year's free NICF Master Fitter membership.

Wool Trends Centre

The Wool Trends Centre returns this September. Located in Hall C, meet with brands that put wool



carpet at the forefront, including Westex Carpets, Adam Carpets, British Wool, Cavalier Carpets, Brintons, Axminster Carpets, Brockway Carpets, Penthouse Carpets, and Ulster Carpets.

Demo Zone

As always, the Demo Zone, run by the Flooring Industry Training Association (FITA) and supported by the Contract Flooring Association (CFA) and National Institute of Carpet & Floorlayers (NICF) is back in Hall B to impart more wisdom on the latest techniques and insights into working with the newest products on the market, via their live demonstrations across the three days of the show.

Registration

Registration for The Flooring Show is now open, meaning you can secure your COMPLIMENTARY passes by heading to www.theflooringshow.com and complete the short form. This pass will give you fast track access to the show and let you skip the queue on arrival.

Show Essentials:

Dates: Sunday 15 - Tuesday 17 September 2024

Opening hours: Sunday 9:30-17:30 | Monday 9:30-17:30 | Tuesday 9:30-15:00

Venue: Harrogate Convention Centre, King's Rd, Harrogate, HG1 5LA

Entry: The Flooring Show is a trade-only event and is free for industry professionals. Register via the show website theflooringshow.com



THEFLOORINGSHOW.COM

   @TheFlooringShow

Image courtesy of Associated Weavers



**REGISTER
FOR FREE
TODAY**



THE FLOORING SHOW
15-17 SEPTEMBER 2024
HCC, HARROGATE

BJELIN BRINGS TWO IMPORTANT PRODUCT INNOVATIONS TO THE FLOORING SHOW

STAND: Q86

Bjelin is showcasing two important product innovations within its revolutionary hardened wood flooring portfolio at this year's Flooring Show.



The first is the Contrast Collection, which enjoyed a highly positive debut at Clerkenwell Design Week. The Collection leverages the existing hues and tones of natural wood to create stunning contrasts, while also blending with the existing Woodura Planks 3.0. It is made from Spačva oak and is available in the XL size. This type of oak, which is sustainably sourced from Croatia with FSC® certification, is renowned for its stunning beauty and distinctive grain.

This vibrant new range was created through the fusion of technology and ageless craftsmanship and suits both residential and heavy-traffic commercial environments. Woodura surface technology makes Bjelin's hardened wood floors three times stronger than traditional engineered wood options, giving enhanced resistance to water and dents. When it is combined with the leakproof 5G Dry® floor locking system, the Contrast Collection ensures lasting durability and boasts a superior class 33 pro matt lacquer - Bjelin's toughest to date.

For further information visit www.uk.bjelin.com/en

CUSTOM CARPET COMPANY

A family run business with more than 40 years experience in producing custom made carpets and rugs for luxury homes, boutique hotels and superyachts.



With a diverse range of products within our portfolio, we can supply all types of custom made carpets and rugs in wool, silk, tencel, bamboo and blended yarns.

We have specialist knowledge in many methods of manufacturing including handtufting, woven, handknotted and passmachine constructions.

Our team offer a comprehensive service, meeting with designers and clients, advising on colour, pile fibre and manufacturing techniques to achieve the perfect design solution.

We are able to deliver and install world wide to ensure seamless project management throughout.

**Custom Carpet Company,
The Brickworks, Lynwick Street, Rudgwick, Horsham,
West Sussex, RH12 3DH**

**Tel +44 (0) 1737 830301 | info@customcarpetcompany.co.uk
www.customcarpetcompany.co.uk**

BJELIN INTRODUCES CPD PRESENTATION FOR THE SPECIFIER MARKET

'Woodura® Hardened Wood Flooring - Innovation and Specification' is a new CPD presentation from Bjelin, the market leading hardened wood flooring manufacturer.



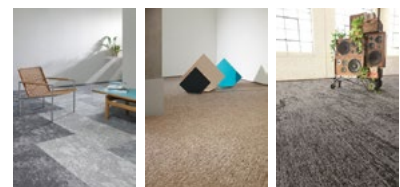
Designed to provide critical information for architects, specifiers and interior design professionals, the CPD covers all technical and aesthetic aspects of this fast-growing flooring solution. Available both as a PowerPoint presentation and also as a video hosted on Bjelin's website, the CPD introduces a professional audience to the following key areas:

- An introduction to hardened wood flooring and how it is different to engineered wood.
- Woodura Technology and 5G Dry®.
- The fire resistance of hardened wood flooring.
- The technical performance of hardened wood flooring.
- The different plank sizes, finishes and colours of Woodura hardened wood flooring.
- The sustainability and well-being aspects of hardened wood flooring.
- The installation, care and maintenance of hardened wood flooring.

For further information visit www.bjelin.com

MILLIKEN ANNOUNCES THREE POPULAR COLLECTIONS CONVERTING TO LOWEST CARBON FOOTPRINT YARN

Milliken Floors has announced the adoption of Universal Fiber's sustainable Thrive® matter yarn in three of its popular carpet tile collections starting July 2024.



Northward Bound *Sculptured Forms* *Major Frequency*

Thrive® matter is recognized as the lowest carbon footprint nylon yarn in the industry, offering a carbon reduction of 89% compared to some virgin nylon yarns. This eco-friendly yarn is made from 100% post-industrial recycled resin, resulting in 90% recycled content and is GreenCircle® Certified.

The collections incorporating this yarn are Major Frequency, Northward Bound, and Sculptured Forms, all known for their high performance and design excellence. Milliken's Director of Marketing and Design, Alison Kitchingman, highlighted the company's commitment to reducing the carbon footprint of its products without compromising quality. Universal Fibers' VP of Sales and Marketing, Anna Plumb, expressed enthusiasm for the partnership and its shared environmental goals.

Thrive® matter yarn, with a carbon footprint of just 1.2kg CO2e per kilogram, is verified by an ISO-compliant Life Cycle Assessment and is among the most sustainable options in the industry.

www.milliken.com/en-gb/businesses/floor-covering

Join Carpet Recycling UK to help make the UK carpet and textile flooring sector more sustainable!

In 2021 it was recorded that 485,915 tonnes of carpet and textile flooring waste was generated in the UK. Through our direct support, our members and the wider waste and recycling sector diverted 81% from landfills into various treatment, recycling and reuse options.

- C** Carpet Recycling UK is a not-for-profit membership association set up in 2007.
- A** We are an independent trade **association** with over 140 members covering the entire supply chain.
- R** We **respond** and advise on best practice for the reuse and recycling of all types of carpet and textile flooring waste.
- P** We **provide** support and advice throughout the supply chain to include flooring manufacturers, contractors, retailers etc.
- E** Members are **encouraged** to demonstrate their commitment to sustainability through case studies and entering our awards.
- T** **Textile flooring** includes broadloom carpet, carpet tiles, event carpet, rugs and underlay.
- W** We engage with the supply chain to identify and promote Circular Economy initiatives to the **wider** network.
- A** We **assess** your waste to find the most feasible, cost-effective recycling options.
- S** We demonstrate and promote **sustainability** through design for recycling initiatives.
- T** Surplus, offcut and used **textile flooring** can be reused or recycled, contact us!
- E** Talk to us at our **events** – save the date for our annual conference on 10th & 11th July 2024!

Contact Carpet Recycling UK

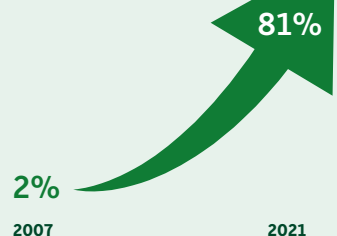
Carpet Recycling UK is a not for profit organisation working across the supply chain to develop more sustainable and environmentally friendly solutions for carpet and textile flooring waste. Our ability to network with our members and wider network helps to provide you with the most feasible solutions to send your waste up the waste hierarchy and prevent waste being sent to landfill. Please visit our website for more information.

www.carpetrecyclinguk.com

Thank you to our Core Members



MOVING CARPETS FROM WASTE TO RESOURCE





KARTA LAUNCHES 18 NEW RECYCLED LEATHER FLOORS

SUSTAINABLE WOOD FLOORING SPECIALIST KARTA HAS LAUNCHED A BRAND-NEW SERIES OF 18 SUSTAINABLE FLOORS WHICH ARE COMPLETELY NATURAL, TOXIN AND PLASTIC FREE

The new series, the Recycled Leather Series, adds to Karta's hyper-realistic wood collection, designed specifically for design professionals, developers, and contractors that want a perfect balance between sustainability, aesthetics and cost-effectiveness. Karta, owned by luxury wood flooring specialists Ted Todd, continues to set industry standards with this sustainable offering.

Karta's Recycled Leather series is made from leather offcuts sourced from the shoe industry, with a further four layers including biodegradable wood composed of 100% PEFC certified natural fibres and resins, a cork backing for improved comfort and durability, a wood fibre layer for stability and a digital print. Each board is coated with Karta's specially developed water-resistant barrier solution, resulting in an AC5 rated performance coat with a super matte finish.

Photo-realistic designs inspired by Ted Todd's decades of expertise within the hardwood flooring industry are printed with biodegradable ink onto the planks, replicating the appearance of real wood. This innovative design provides an accessible alternative to traditional wood flooring options. There are no design repeats in 20 boards, to purposefully allow for a more natural and authentic finish with reduced visible repeats.

The Recycled Leather Series is part of a click system installation process and comes in 18 serviceable colours including natural French oak, reclaimed oak

“

Karta aims to penetrate a new market by not only providing a budget-friendly alternative to traditional wood flooring, but also captivating customers interested in LVT flooring.

and old brown English oak, all available in a wide plank measuring 1850mm x 200mm x 9mm. With no underlay or adhesive required Karta's flooring is quick and easy to install, helping to reduce installation costs.

Founder Robert Walsh commented on the launch "We are incredibly excited about our new Recycled Leather Series which not only showcases Karta's commitment to sustainability but also introduces innovative design elements that offer unique, sustainable flooring solutions at an affordable price point. Karta aims to penetrate a new market by not only providing a budget-friendly alternative to traditional wood flooring, but also captivating customers interested in LVT flooring. Utilising waste materials to create new, long-lasting products really is the future of product manufacturing and we look forward to continuing exploring these methods at Karta."

www.kartafloors.com



Karta ^{TR}

RECYCLED LEATHER SERIES

Did you know that the global leather industry produces 4 billion pounds of waste every year? We save it from landfill to create 18 sustainable and stylish floors.

HELLO KARTA, GOODBYE PLASTIC

kartafloors.com | info@kartafloors.com | 0808 501 7321



AFFORDABLE MULTIFAMILY SENIOR LIVING

BUILT ON TRADITION, COMMUNITY, AND SUSTAINABILITY

Tradition, sustainability, and community were the design concepts and values embedded in AHL's design of Hale Makana O Mo'ili'ili, affordable rental housing for seniors in urban Honolulu.

The six-storey mid-rise wooden structure features 80 studio/one-bath units and 25 one-bedroom/one-bath units. Each apartment boasts modern finishes, kitchens with stone countertops, custom, locally made cabinets, and energy-efficient appliances. The urban residential units are tightly spaced together, utilizing wall materials with high acoustic values to minimize noise transfer. All 105 residential units are FHA and ADA adaptable, with several apartments fully ADA-compliant.

The community center serves as a social hub for facilitating gatherings, sharing cultural practices, and fostering nonprofit agency partnerships. This multi-use space is complemented by the outdoor lobby that provides a shaded, safe, and pleasant place to gather. The computer lab is equipped with modern technology, allowing the residents to stay connected and access online resources with ease. The shared laundry facility is equipped with modern appliances that can be operated by an app on a phone. Conveniently located near the lobby and community resource center, residents can relax while waiting for the app to send an alert when their laundry cycle is complete.

“

In a tight urban environment, every space is designed to have multiple functions.

In a tight urban environment, every space is designed to have multiple functions; for example, the administration office also doubles as a resource center for computer learning, and the elevator lobby doubles as an outdoor living room and lounge.

Carefully designed to blend into the Mo'ili'ili community, the project respects and enhances the residential scale of the neighborhood. The building materials used in the project resemble the construction of nearby single family homes. The materials were thoughtfully selected to reduce environmental impact, both in raw building materials and long-term maintenance. The use of renewable, wood composite cementitious siding increases fire resistance and minimizes the carbon footprint. Recycled materials are also used in the project, which reduces waste and promotes sustainability.

The design team collaborated with a well-known clothing brand, Manuheali'i. They created a lei pattern throughout the project that was inspired by the old baseball stadium that was part of the site's history. Visitors would be greeted by kupuna (elders) practicing their lei craft in shops lining the street.

Sustainability is at the core of this LEED Gold-certified project, with passive design strategies, energy-efficient fixtures, and solar-powered LED lighting. Naturally ventilated, accessible walkways and ADA-compliant features allow seniors to live independently and comfortably.



Olivier Koning Photography; Andy Stenz, The Image Group (TIG)



The project is one of the first of its kind in Hawai'i. Its concrete podium construction protects the building against tsunami surges, while supporting a five-story, fire-resistant, wood-framed, mid-rise building, making it one of the tallest wood buildings in Hawai'i! The building design features a visually appealing mix of vertical board and batten, smooth siding, and sloped hipped roofs with shingles. It was designed to maximize density and provide views, which required close collaboration with the structural engineer to ensure code compliance. The benefits of the new type of building included a significantly accelerated schedule, reduced construction costs, and early tenant occupancy.

The landscape design was thoughtfully curated with native, drought-resistant plants that require minimal irrigation and promote water conservation. The site is intentionally designed to maximize stormwater management with permeable pavement, which allows water to infiltrate into the ground, reducing runoff and erosion. The project was designed for solar electrical panel installation in order to further reduce energy consumption.

www.ahl.design

INTRODUCING THE NEW TITON HRV COOL PLUS™

DESIGNED TO FIGHT OVERHEATING AND ENHANCE INDOOR AIR QUALITY

Titon, a leading supplier of indoor air quality solutions, announces the launch of the HRV Cool Plus™, specifically designed to provide cooling in warmer weather conditions and tackle residential overheating.

Titon's HRV Cool Plus™ is engineered to seamlessly integrate into heat recovery ventilation (MVHR) systems, delivering cooling and filtered air to enhance user comfort. With its integrated cooling module, the cutting-edge unit pre-cools incoming fresh air during warmer months, ensuring a comfortable indoor environment.

Providing up to 3.3kW total cooling capacity (subject to volume flow and relative humidity), it ensures optimal performance even in demanding conditions, and with two mounting options available: either wall or floor mounting, it offers flexibility to suit any installation requirement.

The installation process is straightforward with minimal maintenance requirements with a fully sealed refrigerant heat pump with coil and fin heat exchangers akin to a fridge or freezer, ensuring proven reliability.

The remarkably compact size allows installation below the ceiling in utility rooms allowing enough space to accommodate other appliances underneath such as washing machines or tumble dryers.

The HRV Cool Plus™ was developed in response to increasing overheating issues where standard ventilation is not possible under the Approved Document O (ADO) guidelines. ADO advises mechanical cooling may only be used where it is not possible to remove sufficient heat from the indoor environment without it.

In addition, HRV Cool Plus™ is supported by a CIBSE-accredited Continuing Professional Development

“

The remarkably compact size allows installation below the ceiling in utility rooms allowing enough space to accommodate other appliances underneath such as washing machines or tumble dryers.

(CPD) course on Part O and overheating, providing knowledge and support addressing issues related to overheating.



“We are thrilled to introduce Titon's HRV Cool Plus™ and make good indoor air quality a priority. Overheating in homes can pose various risks, including heat stress, dehydration, and an increase of poor health conditions” said James Fisher, Commercial Director at Titon. “The Titon HRV Cool Plus™ not only enhances user comfort but also provides optimised temperatures especially within new build properties to combat overheating issues.”

Alarmingly it is estimated that over 4,500 people died* in the UK in 2022 due to high temperatures, the largest on record in recent years.

By incorporating designs equipped with a cooling module option, all potential scenarios can be accommodated, ensuring the prioritisation of people's thermal comfort and health.

For more information about HRV Cool Plus™ and other ventilation products and solutions, please visit www.titon.com/cooler

* <https://www.theguardian.com/world/2023/sep/22/heat-related-deaths-2022-hit-highest-level-record-england>

Beautiful Designer Ceiling Fans



Powerful - Reliable - Silent



THE HENLEY FAN COMPANY LTD

01256 636 509
www.henleyfan.com



Ventilation for the Built Environment



quietly **CONTROL** condensation
quietly **EXTRACT** pollutants
quietly tackle **MOULD**
quietly ensure **FRESH** air





Residential
Apartments
Hotels
Student Housing
Care Homes

Low Energy
Economical
MVHR - MEV - dMEV
Building Regulations
Compliant
New Build and
Refurbishment
SAP PCDB Listed

Vectaire Ltd. 01494 522333. sales@vectaire.co.uk. www.vectaire.co.uk

CONSORT CLAUDGEN LAUNCHES DF2E DOWNFLOW FAN HEATER

Consort Claudgen's new DF2E downflow fan heater has a 7-day timer and six temperature settings per day, allowing you to personalise your comfort. Features include open window detection, a digital lock, a large LCD screen, a digital variable thermostat, and a reliable battery backup to keep the clock running during power outages. The heater continues its heating programme after power is restored.



The heater offers quick warmth and allows you to choose between 1kW or 2kW heat output during the installation. As it approaches the desired temperature, it automatically reduces the heat output to 1kW to save energy. For safety, the DF2E has an automatic safety cut-out and will stop operating if the fan or temperature sensor malfunctions. The DF2E heater combines modern heating technology, energy efficiency, and safety, making it an excellent choice for bathrooms and kitchens.

01646 692172 | sales@consortep.com
www.consortep.com

CONSORT CLAUDGEN

DF2E DOWNFLOW FAN HEATER WITH 7-DAY TIMER

NEW





-  **Adjustable heat output (1kW or 2kW)**
-  **7-day programme, 6 temperature settings per day**
-  **Digital variable thermostat**
-  **Safety & lock features**
-  **Open window detection**



For more info on DF2E heater

NOW AVAILABLE

 01646 692172
  sales@consortep.com
  www.consortep.com

IMPROVED THERMAL PERFORMANCE



REFINEMENTS TO PRECISION MANUFACTURING PROCESSES DELIVER FURTHER LAMBDA IMPROVEMENTS FOR RAVATHERM XPS X INSULATION

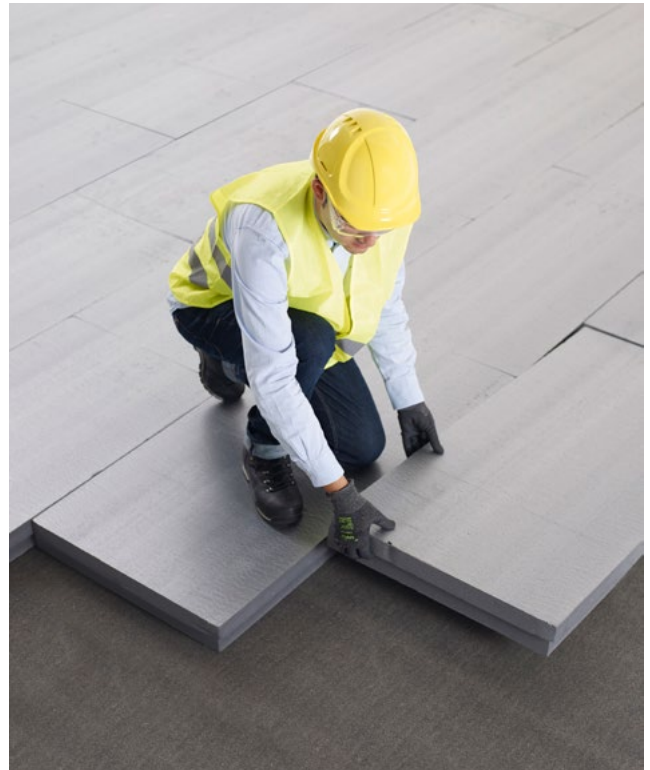
Ravago Building Solutions has announced improved thermal performance for many of its Ravatherm XPS X thermal insulation board products. Further optimisation of production processes at the company's flagship XPS manufacturing plant in King's Lynn, UK, has allowed Europe's largest manufacturer of XPS insulation to declare improved lambda values following stringent lab testing of production samples to ensure consistent levels of performance.

The products with changed lambda values are:

- Ravatherm XPS X 300 SB: All board thicknesses $\leq 120\text{mm}$ achieve 0.030 W/m.K
- Ravatherm XPS X 300 SL: All board thicknesses $\leq 120\text{mm}$ achieve 0.030 W/m.K
- Ravatherm XPS X 500 SL: All board thicknesses achieve 0.031 W/m.K
- Ravatherm XPS X 700 SL: All board thicknesses achieve 0.031 W/m.K

These improved lambda values mean target U-values can be achieved with a thinner insulation solution than previously, providing further reason for specifiers to choose Ravatherm XPS X over alternatives. Ultimately, this improved thermal performance potentially offers savings in embodied Carbon, transport costs, storage costs, installation costs, and energy savings for the end-user once installed.

For example, Ravago Building Solutions is supporting a $4,000\text{m}^2$ inverted roof project in South East England targeting the gold standard $0.12 \text{ W/m}^2\text{K}$ U-value. This project will now be able to use 40 m^3 less Ravatherm



XPS X 300 SL due to a 10mm reduction in the required thickness of the thermal insulation boards.

"We are continually looking to improve the performance of our already class-leading range of thermal insulation products," said Joan Ferrer, Commercial Director UK & Ireland, Ravago Building Solutions. "Our plant in King's Lynn, UK, has been manufacturing XPS boards for over 65 years, and our team is continually working to further refine our precision manufacturing processes to consistently produce insulation products that offer exceptional performance for all our customers."

Revised technical literature reflecting the improved lambda values has been published on the Ravago Building Solutions website (www.ravagobuildingsolutions.co.uk). There are also updated product listings on the NBS Source and Barbour Product Search platforms. Updated BBA certification for Ravatherm XPS X 300 SB and Ravatherm XPS X 300 SL will be available soon.

www.ravagobuildingsolutions.com





AWARD-WINNING WAYFINDING FOR NEW RPBW COURTHOUSE

Toronto studio, Frontier, has designed an award-winning wayfinding system for the new Ontario Court of Justice in Toronto, partnering with a diverse development team led by Ellis Don and Renzo Piano Building Workshop. The new courthouse is Renzo Piano's first building in Canada.

Signage regulations within courthouse buildings are strict and detailed. With that in mind, Frontier was mindful to align their ideation to those regulations, seeking out creative solutions within those constraints. The result is an intricate hierarchical system that integrates with the interior's custom wall panels and complements the minimalist architecture of the courthouse.





A complex graphical project, nicely done.

Working with simple tools like water jet-cut aluminum, laser-cut acrylic, and additive tactile printing, the system devises a straightforward aesthetic that begins with the building's frontage and continues through every room along one's journey.

The most narrative moment of the system is the atrium's History Wall, which showcases a curated selection of historic images from the surrounding neighbourhood, from pre-colonial Indigenous activity through to the many diverse populations that have called this site home.

"A complex graphical project, nicely done," said Piero Lissoni, Founder and Design Principal, Lissoni & Partners, and AZ Awards 2024 Juror.

Technical sheet

Official Project Name: Ontario Court of Justice

Location: Toronto, ON

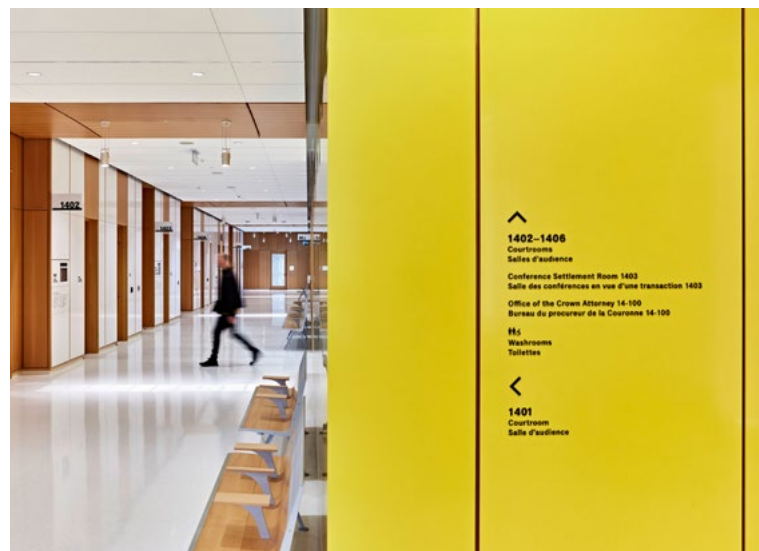
Client: Ellis Don

Architects: Renzo Piano Building Workshop

Project Team: Paddy Harrington-Creative Director, Jessica Leong-Design Team

Paul Kawai-Design Team, Phillip Novak-Signage Consultant

www.frontier.is





INTRODUCING DP-CRYSTAL SLIM

THE PERFECT BLEND OF TIMELESS GLASS DESIGN AND UNRIVALLED CRYSTAL STRENGTH

Decorative Panels Lamination has launched a new product, dp-Crystal Slim - a collection of over 16 REHAU designs from their Pure, Strong and Deep ranges, designed for vertical indoor use, perfect for splashbacks and wet wall applications. With an easy to clean, hygienic surface, dp-Crystal Slim is a suitable replacement for traditional bathroom and kitchen wall tiles. It is an ideal substitute for glass, tile or traditional stone and marble in all hospitality and retail environments.

dp-Crystal Slim boasts exceptional durability, resisting scratches, heat, and chemicals, making it an ideal choice for high-traffic areas. Its sleek and modern aesthetic will elevate any space, while its low maintenance requirements ensure a hassle-free experience. The crystal glass surface is non-porous, preventing the growth of bacteria and mould, making it a hygienic choice for kitchens, bathrooms, or even healthcare facilities.

The versatility of dp-Crystal Slim knows no bounds. It is suitable for kitchen walls under cupboards, shower walls, basin splash backs, kitchen splashbacks. dp-Crystal Slim is perfect as a centre panel for furniture or media units. Its acrylic surface is only 4mm thick, is 50% lighter than real glass and 10x less brittle. It is the perfect surface finish for hospitality and retail interiors. dp-Crystal Slim can be easily machined on site using conventional woodworking tools, no need for templating, off site working and revisiting to install at a later date. Suitable replacement for traditional bathroom or kitchen wall tiles.

“

The slim design adds a touch of sophistication to any setting, making it the perfect choice for those who appreciate the finer things in life.

It can be used to create stunning feature walls or elegant backsplashes. Its slim profile and lightweight design make it easy to handle and install, reducing labour costs and minimizing environmental impact.

dp-Crystal Slim is not just an ordinary surface finish. It is a masterpiece crafted with precision and care to deliver a product that is both visually stunning and incredibly durable. The slim design adds a touch of sophistication to any setting, making it the perfect choice for those who appreciate the finer things in life. But what truly sets dp-Crystal Slim apart is its unrivalled strength. Made with the highest quality materials, this product is built to last.

Whether you're working on a large-scale commercial project or a bespoke residential design, Decorative Panels are here to help you achieve your creative vision. dp-Crystal Slim is available in high-gloss and matt versions in quantities from as little as just one laminated, acrylic sheet.

www.decorativepanels.co.uk

dp-crystal slim

Timeless glass designs with the unrivalled strength of crystal

 dp-limitless

Designed for **vertical indoor use**, **dp-crystal slim** is perfect for **splashback** and **wet wall** applications. With its **easy to clean, hygienic surface**, **dp-crystal slim** is a suitable replacement for traditional bathroom and kitchen wall tiles. **dp-crystal slim** is the ideal glass, tile or traditional stone and marble substitute for all hospitality and retail environments.

Available to **order in quantities from as little as just one laminated acrylic sheet** with dimensions: **2800mm x 1300mm x 4mm.**

Visit www.decorativepanels.co.uk to explore the full **dp-crystal slim** range within our **dp-limitless portfolio**.



YOUR PERFECT PARTNER

Key benefits:



No commitment to purchasing in bulk



High scratch resistance



50% lighter than real glass



10x less brittle than real glass



Easily processed



4mm acrylic surfaces



THE PERFORMANCE FLOOR OF CHOICE

THE IMPORTANCE OF SPECIFYING THE CORRECT FLOOR FOR DANCE AND DANCE EDUCATION

Whether you are specifying a dance floor for the world's leading dance companies or for classes in schools, colleges or universities, the same fundamental criteria apply. Wherever a student chooses to study dance, it is important to make sure that the learning environment is equipped to professional standards with sprung floors, mirrors, and barres.

Choosing the correct dance floor is vital for dancers' health, safety, and artistic performance. Sprung floors, often referred to as floating floors are not all the same and understanding the differences between the various types of floors available is important.

Experts in biomechanics have established a clear link between the quality of a dance floor and the likelihood of injury, demonstrating that a floor with a consistent response and the correct degree of 'traction' is vital.

Dance creates impact energy. If the energy generated is returned to the body it can result in an array of joint problems, sprains, fractures and knee problems. Lower limb problems such as tendinitis, 'shin splints,' and ankle strain can all be attributed to incorrectly specified sprung floors and can take several weeks of physical therapy and recovery time to correct. A dance floor that is impact absorbent and provides lateral foot support is essential.

Ensure correct specification.

Harlequin has led the way in developing and evolving the modern dance floor and has been involved with extensive research into reducing dancer injury.



“

Harlequin has led the way in developing and evolving the modern dance floor and has been involved with extensive research into reducing dancer injury.

Innovation is at the heart of all product development which is why Harlequin has become the brand that dancers and performers depend on.

Harlequin offers a turnkey solution for all performance spaces, from initial design and build through to installation, offering advice and guidance every step of the way. All enquiries are handled on a one-to-one basis by our expert technical teams. With over four decades of experience working across a wide range of projects and venues across the world, the Harlequin in-house project management and installation teams can be relied upon to deliver on time and on budget.

All Harlequin sprung and vinyl floor products and ballet barres are easily found and specified through RIBA and NBS.

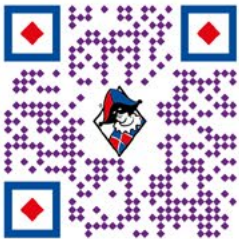
For further information about specifying the correct floor for dance and the performing arts, visit our website: www.harlequinfloors.com or talk to our team on 01892 514 888 or email: enquiries@harlequinfloors.com

A turnkey solution for performance spaces

Harlequin offers a turnkey solution for all performance spaces, from initial design to expert installation, offering advice and guidance every step of the way.

With an extensive range of sprung floors, vinyl floors, dance mirrors, ballet barres and dance studio equipment, Harlequin can provide everything a performance space requires.

For more information call our technical team today.



HARLEQUIN
www.harlequinfloors.com

enquiries@harlequinfloors.com +44 (0) 1892 514 888

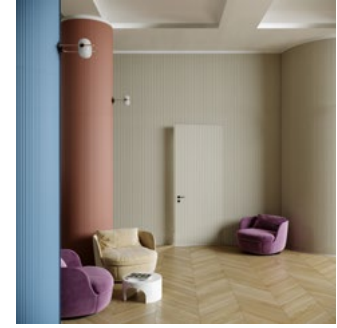
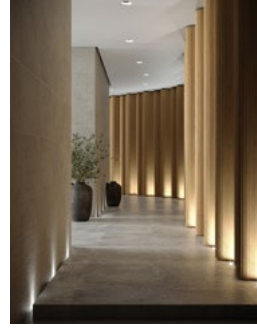
BEND THE RULES OF DESIGN: CURVED APPLICATION SOLUTIONS FROM HAVWOODS

Market-leading wood surface specialists, Havwoods, has developed and enhanced its collection to include new and innovative veneers that can be applied to curved surfaces - with the addition of the Elegante and PureVeneer ranges.

Offering versatility and flexibility, these groundbreaking collections offer architects, designers and homeowners the opportunity to create stunning designs, made from high-quality materials, which can be applied to curved surfaces such as walls, cabinetry and furniture.

The 3-dimensional Elegante veneers introduce beauty in intricate shapes that add texture to any space. Constructed using thin layers of Ayous and meticulously milled in the Italian countryside; the product is then bleached, stained and layered for a truly stunning and bespoke timber-based design solution.

The low-density structure means that the veneers are extremely lightweight compared to an alternative wood equivalent, resulting in a more amenable and



flexible product that can be fixed onto walls, furniture, cabinetry and subtly curved surfaces.

Part of the PurePanel collection, the PureVeneer sheets from Havwoods are pre-finished, flat sheet veneers that offer fantastic flexibility to create stylish and unique interiors for both residential and commercial spaces.

Versatile and ready to use, the sheets offer the same distinctive look and feel as solid wood but are a more affordable and time-saving option. Coloured to complement some of Havwoods' most popular flooring designs, the collection includes everything from the rich tones of Walnut and Vernon to the sandy hues of Artenay and Paron.

www.havwoods.com/uk

DIALLING DOWN NOISE AT SEVEN DIALS MARKET

Seven Dials Market in Covent Garden is a market and dining space occupying the 19th Century Thomas Neal's Warehouse. Designed by architects Stiff+Trevillion for client Kerb, the scheme comprises 23,680 square metres of food, drink and entertainment space.

Centred around a large open atrium under a large skylight, the two-floor market features a rich and diverse collection of 20 independent food and drink businesses offering cuisine from around the world.

Part of the Stiff+Trevillion's design was to draw on the building's history as a former banana storage warehouse and the resultant space is contemporary in style yet rooted in its heritage. The design of the building retains many original features carefully restored and refurbished including cast iron beams and brickwork arches on a flagstone floor. As with all large, open spaces covered with hard surfaces, controlling acoustics was essential in providing a comfortable space for staff and visitors. As a result, Trolldtekt wood wool acoustic panels in a black finish were specified for use around the central skylight to help acoustical performance.

This is an excellent example of how acoustic panels can be incorporated into a project allowing architects

to design modern, large spaces with hard surfaces but mitigating the problems stemming from long reverberation time and reflected sound.

Trolldtekt acoustic panels are available in a variety of different structures and colours, combining superior sound absorption with an award-winning design. The Trolldtekt range has a minimum expected life cycle of 50 years coupled with excellent resistance to humidity and tested to meet ball impact standards. The range is available in various sizes and structures, from extreme fine to fine. They can be supplied as natural wood or finished in almost any RAL or NCS colour.

Depending on the panel specified, reaction to fire is classed in accordance with EN 13501 as B-s1,d0 or A2-s1,d0 respectively. Cradle to Cradle Certified® at Gold level, Trolldtekt wood wool acoustic panels are manufactured using wood from certified forests (PEFC™ and FSC®C115450) and can contribute positively to a building's BREEAM, WELL or LEED points.

Samples, case studies and technical guidance are available from www.trolldtekt.co.uk or see our product listings on NBS (<https://bit.ly/3vxoTfq>) or Material Bank (www.materialbank.eu).



COCOON, PRE-PRIMARY EXTENSION, BLOOMINGDALE INTERNATIONAL SCHOOL

ANDBLACK DESIGN STUDIO REVEALS YET ANOTHER DYNAMIC PROJECT FOR PRESCHOOLERS

In a region where traditional education systems dominate the sector, Bloomingdale International School in Vijayawada highlights the transformative power of parametric architecture in pushing the boundaries of education and challenging conventional norms. It is a first-of-its-kind institute, and the only International School in the state of Andhra Pradesh, India, that has: in its core value a vision to provide education that is unconventional by standards; in its heart to go beyond what other pre-schools in the region provide; and in its brief to bring a paradigm shift in early education through thoughtful architectural design.

The pre-school occupies a 4,000 sq. ft. area within the campus, adjoining the existing school building.



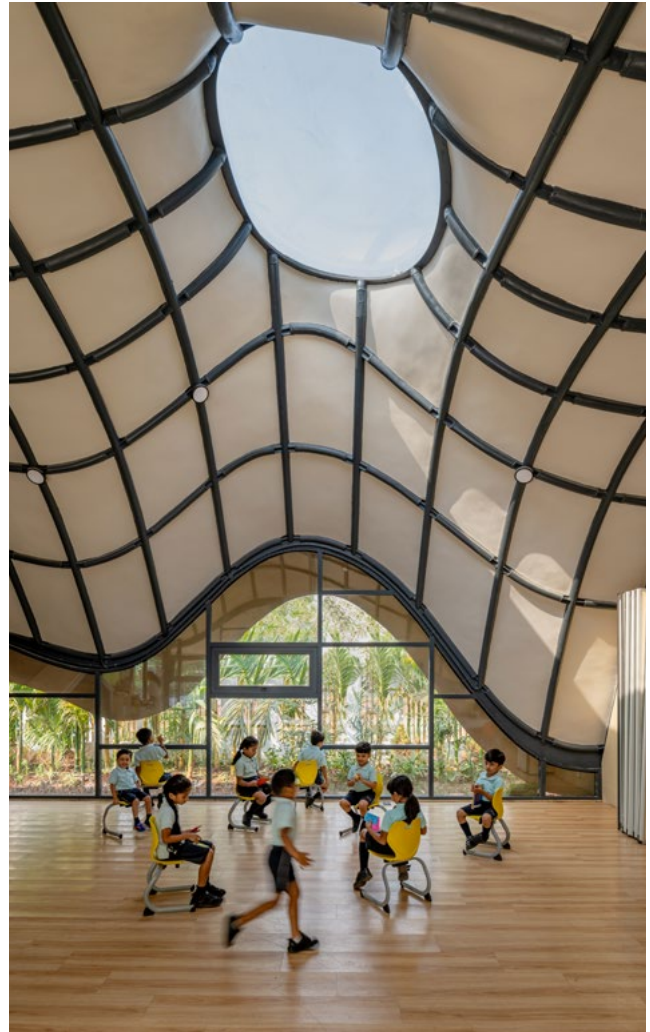


In line with its vision, the architecture of Bloomingdale International School breaks away from the typical school design norms.

Connecting the two buildings is a sunken courtyard, following the topography of the site and ascending towards the new extension as if climbing a hill. This site arrangement, along with the need to cater to about 100 pre-schoolers, offered the architects an opportunity to develop something unique to the school campus. The outcome is a design that challenges the notion of what a school should be. It does so by bringing the built form, landscape, and interiors together into a single entity, using non-conventional spatial organization, modern technology, and robust materials.

In line with its vision, the architecture of Bloomingdale International School breaks away from the typical school design norms. Instead of the usual box-like classrooms for an undulating 3,000-sq ft indoor space, the layout envisions classrooms as fluid, interconnected spaces that foster free movement and interactions.

The design seamlessly merges spaces for playing and learning, blurring the lines between the two. The courtyard adds to this effect by adapting itself as



Photography: Vinay Panjwani

a playground, a classroom, an amphitheater, or a puddle pool as the function demands. This unique spatial experience is further enhanced by the use of full-height glass panels in place of walls and skylights on the roof. By doing so, the design eliminates the understanding of what is inside and what is outside, thereby making the landscape an extension of the built space, and vice versa.

Another point of departure from conventional school architecture is the design's reliance on built form instead of bright colors to generate visual interest. Central to this idea lies the thought: "the building, instead of being a part of the landscape, should be a form of the landscape in itself. This is evident by the curved, undulating roof emulating a wave, or perhaps rolling hills. When one views the building from a distance, the viewer can immediately catch glimpses of the landscape beyond, making the building seem like a part of the scene itself. A closer look reveals the real ingenuity of the design: kids inhabiting the building as if protected within a cocoon.

The fluid form of the roof - covered in turf and resting on an unobstructed structural space devoid of any internal supports or partitions - has been conceptualized using computational tools. Its ingenuity lies in how the green surface outcasts the rest of the built form, making it a landmark in the area. Even more surprising is the fact that the structure itself has been realized within a limited budget by adopting an efficient construction process that considers readily available resources and technologies. Its reliance, especially on prefabricated materials, is another critical aspect of the design. The structural core of the roof has been erected on site using prefabricated elements and construction techniques that involved directing unique junction plates at each intersection of bent circular hollow sections along the X and Y axes. The required curvature has been attained by varying the heights of precisely fabricated and assembled junctions. Structural complexities in achieving the smooth external skin were resolved with a ferrocement shell integrated above the unique metal structure.



When this structure is viewed from the inside, the roof creates a captivating sense of both wonder and mystery at once. Exposed structural elements along the ceiling present a beautiful contrast to the exterior turfed surface, thereby allowing the true character of materials to shine. The visual effect of this austere material palette is heightened by natural light dissipating through the skylights, punctuating the seamless curvature and creating an anchor point in each classroom. The movement of light and shadow, diffusing in the classroom across the day, adds another playful element to the design.

The architecture of this school is unique in its structural expression, innovation in design, and resoluteness in its unconventional approach, where every part has been thoughtfully designed to reinvent the concept of educational spaces and leave an impression on its users. The use of full-height glass panels and turfed roof; fluid spatial organization of classrooms; reliance on prefabrication and computational technologies; and a parametric architectural form, deviate from 'typical box building', creating a distinct, non-conformist, and playful structure that could keep childlike curiosity alive. In doing so, Bloomingdale International School stands as a harbinger of the power of architecture in shaping the design of future educational spaces.

www.andblackstudio.com



FRAMING

THE VIEW

75 years is just the beginning... At HAGS, the emphasis on sustainability has guided our efforts over the last 75 years.

Even though the concept of "sustainability" might not have been as prevalent in the past, our genuine concern for both the environment and people has always been a driving force.

As a company, we hold the responsibility of ensuring that our operations remain sustainable from economic, social, and ecological standpoints.

We have teamed up with some of the most renowned Scandinavian designers to develop a range of park and Urban Furniture products encouraging the local community to socialise and enjoy spending time outdoors.



Boasting a timeless aesthetic and improved usability, our park and urban furniture range will cope with heavy use and age beautifully over the years. Suitable for all weather conditions and environments, it has added value to many outdoor recreational spaces across the world.

As a global pioneer in designing outdoor recreational equipment, we specialize in crafting innovative park furnishings that transform areas into vibrant outdoor havens.

Embark on a journey where innovation meets purpose, and every structure tells a story of community, fun, and fitness.

Whether you're on the lookout for the perfect accent for your project or require guidance to embark on a new initiative, explore our 'Crafting Outdoor Spaces' section for a roadmap into the world of HAGS equipment. From designing your own seating area HAGS have you covered. Discover more <https://hags.co.uk/en-gb/furniture>



OUTDOOR PARK AND
URBAN FURNITURE





BUILT TO LAST A LIFETIME

UNIQUE AND HANDCRAFTED POTS AND PLANTERS

Torc make everything by hand from their studio in the British Isles.

Working alongside a talented team of artisans this family run business really specializes in textures, scale, and especially bespoke design. The design side of the business proving to be very popular with landscape architects and garden designers alike realizing just how much expertise this company has to offer with a wealth of experience in design and problem solving to bring to the table. Torc welcome the opportunity to be involved at the design stage and are happy to contribute ideas when requested. Frequently being commissioned to provide planter designs, outdoor furniture and paving as a one-off template for both commercial and residential spaces.

Torc are constantly launching new products such as 3m wide waterbowls, log burners and ice tubs. Their green credentials are pretty impressive too.

www.torcplants.com

“

Torc welcome the opportunity to be involved at the design stage and are happy to contribute ideas when requested.



UK MANUFACTURERS OF
STREET FURNITURE



- POSTS - HINGED & TELESCOPIC
- BOLLARDS - STEEL & STAINLESS
- HOOPED BARRIERS
- CYCLE STANDS & RACKS
- CYCLE SHELTERS
- HEIGHT RESTRICTORS
- SWING GATES
- ARM BARRIERS
- SMOKING SHELTERS
- SEATING



01788 550556
info@autopa.co.uk
www.autopa.co.uk

AUTOPA Limited, Cottage Leap, Rugby, Warwickshire, CV21 3XP

AUTOPA

INTURF
People who know turf know INTURF



**Plastic Netting Free Turf
Nationwide Delivery
TerraCottem Distributor
SafeSupplier Verified**

**Top Turf
Every Time.**

<https://inturf.com/>
01759 321 000

**SUPER FAST DELIVERY
OF FEEDER PILLARS
AND BELISHA
BEACONS!**



We keep stock of both our mini pillar ranges SDMP and BD in a wide range of sizes to suit most applications. We also keep some larger Pillars from our FFP range meaning you can have your pillar within 24-48 hours of order and not have to wait for weeks. In addition, our bespoke and made to order sizes are available from just 2 weeks!

We also keep stocks of our standard AmberGLO8 and OlympiadIPB illuminated column pedestrian Beacon. We also have spares and extras like LED Crossing Spotlights and Courtesy Shields and also the LED beacons for retro fitting for both Belisha and Refuge Beacons

We have been manufacturing since 1982 and are ISO 9001:2015 Quality assurance certified. We supply high quality products for a wide variety of purposes from Highways & Streetlighting, EV Charging and Outdoor Power & Leisure to Sports Facilities, Car Parks, Markets and many other purposes. So you can be confident that the service and products you receive from us is top notch and that we work to a consistent high quality.

See www.fisherandcompany.co.uk to view our great range of galvanised, stainless and powder coat finish Feeder Pillars, GRP Enclosures, Belisha Beacons, Lighting & Sign Brackets and Digging Tools. To get a quote for your latest project please contact the Sales Team on 0333 666 2122 or email info@fisherandcompany.co.uk.

**FISHER
& COMPANY**
Est. 1982

FEEDER PILLARS

- Power Distribution
- Market stalls & events
- Sports & Leisure
- EV charging
- Hospital MRI
- Caravan parks



**Galvanised, Stainless Steel & GRP
Modern & Traditional design • Shell only or Pre-Wired**



**CALL OUR FRIENDLY SALES
TEAM NOW FOR A QUOTE:
0333 666 2122**

Or email: info@fisherandcompany.co.uk





SAINT PAUL'S LITTLE MOD

ARCHITIZER A+ AWARD WINNER ARCHITECTURE +MODELS
& RENDERING CATEGORY

Named "The Little Mod", this urban infill development brings a new take on density in the West 7th neighborhood of Saint Paul, Minnesota. The duplex boasts six co-living bedroom/bathroom suites per unit for a total of twelve suites.

The Nordic aesthetic, with two simple materials of wood and large format panels, is meant to complement its surroundings, not compete with them. The building faces south with large openings to bring in ample amounts of natural light and passive heating in the winter.

Faced with multiple challenges consisting of sixteen feet of grade changes in two directions, bedrock near the surface, and a small buildable lot, the design intent was to build a simple structure with minimal impact on the site.



“

We captured the essence of Little Mod across the changing Minnesota seasons, showcasing its potential as a smart and natural addition to the neighborhood for investors and officials alike.

The project is targeting a Zero Energy Building that pairs a high-performing building envelope with intelligent mechanical systems. Energy modeling will play a big role in the overall design of the building envelope, along with the quality of windows and doors of the project. The goal is to produce more energy than the home's annual energy use.

In early 2024, Double Jack needed to rely on the exterior renderings to get the project across the finish line— securing funding, winning grant proposals, and obtaining city approvals. Visualization studio NOMINN embraced this

creative challenge and produced a series of stunning renderings, each capable of standing alone as a piece of art.

“We captured the essence of Little Mod across the changing Minnesota seasons, showcasing its potential as a smart and natural addition to the neighborhood for investors and officials alike”, explains Jake Williams, NOMINN founder.

The project has since secured significant funds, including from Statewide Affordable Housing Aid, 2023 HRA Levy funding, and American Rescue Plan Act funding. Construction is planned to begin in late 2024.

NOMINN also submitted the renderings to the 12th Annual Architizer A+ Awards, earning the Jury Selected award in the Architecture +Models & Rendering Category.

www.nominn.com

www.doublejackdesign.com



ARIA JULIET BALCONY

SIMPLE INSTALLATIONS WITH EXCELLENT VALUE FOR MONEY

Named after the famous scene from Romeo and Juliet, the Juliet Balcony is placed in-front of a window or door. Allowing the window to open fully and transform into a balcony. You might have heard them called French Balconies or Faux Balcony. At Pure Vista, our system is called ARIA.

You can stand inside your home as if on a balcony, letting the fresh air in. Widely used throughout France and Italy, this style of balcony is increasing in popularity here in the UK.

Using two sides of channel which fix onto the wall around the window and a solid glass panel held between them.

Why we love Juliet Balconies

1. Improved Light

Juliet Balconies are a perfect way to increase light in your room. The use of a full-length glass door massively increases the sunlight pouring into the room, the glass balcony will not obstruct this.

2. Safety

The solid glass panel is installed close to the wall of the house. This significantly reduces the chance of small items falling through a gap. The system is also strong and secure, tested to 0.74kN loading making it suitable for domestic installation.

3. Increased Ventilation

With a Juliet Balcony installed, you are more likely to have the door open more often. The flow of fresh air into your home will work wonders!



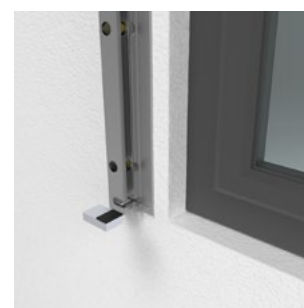
“ *Widely used throughout France and Italy, this style of balcony is increasing in popularity here in the UK.* ”

4. Subtle in appearance

The channel profiles used for a Juliet balcony are thin in comparison to traditional glass balustrade. They will not be seen from inside the room and are subtle enough to suit any property from the outside. They are available in a range of colours.

5. Cost

In comparison to traditional balconies, the Juliet Style is much more cost-effective for installers and homeowners. Supplied in one compact box and delivered to you, you can have a balcony without an extension.



www.pure-vista.co.uk
sales@pure-vista.com
01208 261040

ARIA

Juliet Balcony from Pure Vista.

Channel easy to install, tested to 0.74kN & available to order now!



Anodised 25µm

Tested to BSI regulations

Up to 3m wide glass

ARIA Juliet Balcony

The ARIA Juliet channel is tested to 0.74kN per metre fixing into concrete and steel.

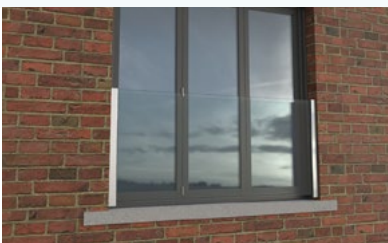
Suitable for glass thickness of 13.5mm, 17.5mm & 21.5mm.

The lightweight Aluminium channel is anodised to 25 microns, ensuring protection from the elements.

The glass is held securely in place with a solid Aluminium block within the channel.



We run monthly open CPD sessions, register on our website!



Test reports, technical support & installation guides available



Anodised in silver or black brushed to 25 microns



Contact us directly for samples, quotes & orders

DISABLED ACCESS:

VERTICAL PLATFORM LIFTS DESIGNED AND MANUFACTURED IN THE UK

Bespoke Sizes **Custom Finishes**
Fully DDA - Part M Compliant **Nationwide Coverage**
Screw & Nut Drive **High Quality & Reliable**

 **DESIGNED & MANUFACTURED IN THE UK** 

DISCUSS YOUR REQUIREMENTS & ARRANGE A SITE SURVEY:

CALL: 0116 291 6000

EMAIL: enquiries@dalby.co.uk



 **platform lifts**
www.dalbyplatformlifts.co.uk

THE NUMBER ONE CHOICE WHEN IT COMES TO LIFT SOLUTIONS

KEP Lifts offer expertise in creating residential, commercial and event solutions for all budgets with experience spanning over 30 years within the Lift Industry. As well as supply and installing a vast range of lifts and platforms we also explore economical and effective refurbishment solutions. We are proud to have worked in famous iconic landmarks and buildings across the country as well as many private residences and at some of the biggest sporting events.



that the end result meets all requirements and exceeds expectations for any budget.

Like most Industries there are constantly new styles evolving. We keep ourselves abreast of all the latest advances so that we can knowledgeably guide you on any new features that a lift solution could benefit from.

If you are already a lift owner we offer excellent service, maintenance and breakdown care to keep your lift travelling smoothly.

Contact us today for a consultation and no obligation quote; either email: info@keplifts.co.uk; or telephone 01843 610060.

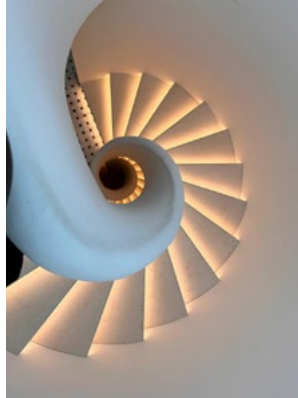


OVER 20 YEARS OF STONE INNOVATION

At Stoneworld we are experts in creating bespoke stone staircases in any space, from hotels and historic buildings to private homes. Utilizing state-of-the-art stone masonry technology and precision equipment, we can craft staircases to meet any project specification.



Whether it's a subtle curve or a lavish grand staircase, our tailor-made stone staircases are fabricated to your exact specification using 3D templating and design technology.



Stoneworld's expertise ensures that each staircase not only enhances the aesthetic appeal of a space but also matches the specific design requirements of the project. With over two decades of experience in natural stone, our experts can help you or your client design, fabricate and install beautiful and unique natural stone staircases and features in the highest quality natural stone.

Find out more about our masonry capabilities on our website at www.stoneworld.co.uk, or contact our team on **01844 279274**.

STONEWORLD
Experts In Natural Stone

BESPOKE MASONRY SERVICES

STEPS | COPINGS | PIER CAPS | SCULPTURE
PAVING | WALLING | ROCKERY | WATER FEATURES

01844 279274 | sales@stoneworld.co.uk | www.stoneworld.co.uk | Views Farm, Great Milton, OX44 7NW

**CHANCE TO
WIN £1000
Travel Vouchers
WE LOST COCO
@www.ikoniclifts.co.uk**

**SIMPLY FIND
COCO ON OUR
NEW WEBSITE
From 06/09/24**

**FOR YOUR
CHANCE TO WIN
FIND COCO & CLICK
HER TO BE IN IT TO
WIN IT!**

www.ikoniclifts.co.uk
Commences 06/09/24

IKONIC LIFTS

Entrances must be 18 or over. Launch competition starts from 06/09/24 to 20/11/24. The winner will be selected at random and notified via email. Please see website for full terms and conditions.

CRL POSIGLAZE IS PITCH PERFECT

Frameless and handrail free glass balustrades are on-trend look that creates a minimal, sleek finish on exterior projects large and small. Installation of such systems is now straightforward, and safe, with the innovative CRL Posiglaze system.



A fully adjustable glass balustrade system, CRL Posiglaze uses a unique clamping design and a quick and easy adjustable method to align glass panels when a handrail is not specified. These qualities made the system the natural choice for installers working on the refurbishment of the balcony area at St Helen's Golf Club in Liverpool.

Cleverly designed out of extruded aluminium, saving weight yet keeping strength, the system is lightweight yet extremely strong, making delivery, fitting and maintenance easier while ensuring end user safety. Posiglaze uses a simple adjustment system to allow horizontal alignment of each glass panel, making it fully adjustable and possible to install the glass even on an uneven surface. Installation is possible in just four easy steps; fit the base channel to the substructure, clip the glass side clamps to the bottom edge of the glass panel, position the glass in the channel and attached the cover strip and bead gasket.

For more information call CRL on 01706 863600, email crl@crlaurence.co.uk, or visit www.crlaurence.co.uk



WHERE LIGHTING AND DESIGN UNITE

LiGHT24

THE UK'S ONLY DEDICATED EXHIBITION FOR LIGHTING SPECIFICATION
20 & 21 NOVEMBER 2024

Held at the Business Design Centre in Islington, London, LiGHT 24 is the UK's only trade show dedicated to high-end lighting specification. Held annually, over two-days in November it attracts designers and specifiers from all areas of the industry looking to be inspired, educated, and grow their professional network.

Having attracted almost 5,000 visitors in 2023 - architects, interior designers, lighting designers, engineers, and specifiers head to LiGHT in their thousands to see the very latest product innovations and launches from 100s of exhibiting architectural and decorative lighting brands.



“

LiGHT also provides endless opportunities for visitors to make new connections.

Run by [d]arc media - the leading media company in lighting design - the show also features the highly regarded [d]arc thoughts talks programme. Moderated by editors from the leading lighting design magazines arc and darc, as well as guest moderators, the talks delve deeper into the latest topics and trends affecting lighting and design - whether that's looking at circular economy and sustainability, designing for wellness, or diversity in design.

LiGHT also provides endless opportunities for visitors to make new connections, whether that's through the late-night drinks party, networking brunch, or while working in the dedicated co-working space, or re-energising in the Associations Lounge.



The 2024 edition of the show will take place on 20 and 21 November and is completely free to attend. For more information, including an exhibitor list and talks programme schedule, head to: www.lightexpo.london



PRESERVING THE PAST, ILLUMINATING THE FUTURE

The Zumtobel Group lighting brands Thorn and Zumtobel and contractor Lytestream devised a comprehensive lighting solution for Darlington Library, blending heritage preservation with modern functionality.



The main lighting challenge was to provide a scheme that complemented the building's architectural appearance while offering functionality. The specified products included Zumtobel's TECTON, SLOTLIGHT, SLOTLIGHT round, and LITECOM, alongside Thorn's luminaires such as Cesar, Contrast RGBW, Piazza, Blade RGBW, Katona, Poppack, Aquaforce MWS, and IQ Wave suspended.

Suzu Hill, Library Manager, comments, "Zumtobel Group's lighting solution for Darlington Library balances heritage preservation with modernity, creating a vibrant and functional space for the community. The project exemplifies a commitment to preserving historical and cultural legacies while embracing progress and innovation."

Take a closer look at the finished refurbishment at <https://youtu.be/PmlhGm9JXhQ>, or read the full case study here: <https://z.lighting/en/zumtobel/inspirations/darlington-library-preserving-past-illuminating-future/>



The Elgar by Sammode Ideal for boardrooms, restaurants, front of building exteriors, and outdoor spaces

- LED wall lamp with directed flow ø70
- Angles slats reflect light back to the ground obscuring the light source
- 4 colour finishes
- Reversible grill
- Waterproof and highly resilient, ideal for indoor/outdoor spaces
- Stainless steel, IK10 composite basin



The Brueghel Direct/Indirect Perfect for business, work and recreational areas.

- 1 light which can create 3 atmospheres/ambiences
- With 2 sources and low luminance grid (UGR<19)
- 2 drivers allowing independent control of direct/indirect lighting
- Colour rendering index of over 90
- Dimmable lighting
- Wide choice of finishes



www.ecolightsystems.co.uk
simon@ecolightsystems.co.uk
 Mobile 07780 118029 | Office 0141 374 0432



Zeta Specialist Lighting Ltd,
Telford Road, Bicester,

+44 (0)1869 322 500
info@thezetagroup.com
zetaled.co.uk

SmartScape Solar Bollard



The SmartScape Solar Bollard from Zeta specialist lighting is a modern solar powered solution for exterior wayfinding illumination.

FEATURES

- Integrated PV
- Zero trenching and running costs
- 5m detection range
- Up to 10 day autonomy*
- Dark skies option

*depending on time of year





Control your Garden lighting, without the need for a Wi-Fi hub, with New Wise Direct Boxes



Simple set-up using app



Dusk till dawn Timer



Preset Time-lag function



No Wifi router required



No programming required



Instant feedback




info@wisecontrols.com
www.wisecontrols.com





DESIGN BROUGHT TO LIGHT



Download the Elstead 2024 Catalogues today

+44 (0)1420 82377 | enquiries@elsteadlighting.com | www.elsteadlighting.com

LUXURY TECHNOLOGY SOLUTIONS

HiiLIFE SECURES LATEST RENOVATION CONTRACT FOR OXYGEN ACTIVEPLAY READING

HiiLIFE, leading provider of luxury technology solutions in the construction and hospitality sectors, has secured the contract to deliver a full technology package at Oxygen Activeplay’s new site in Reading.

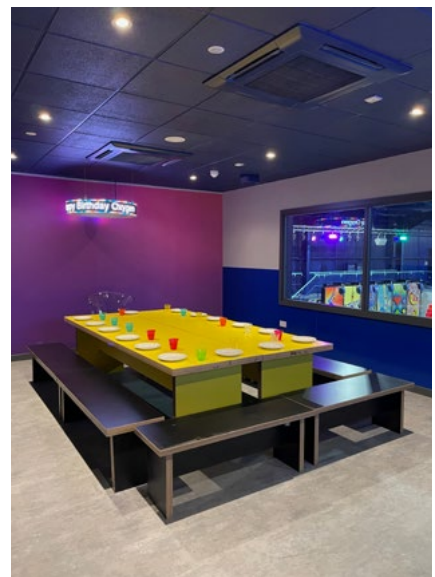
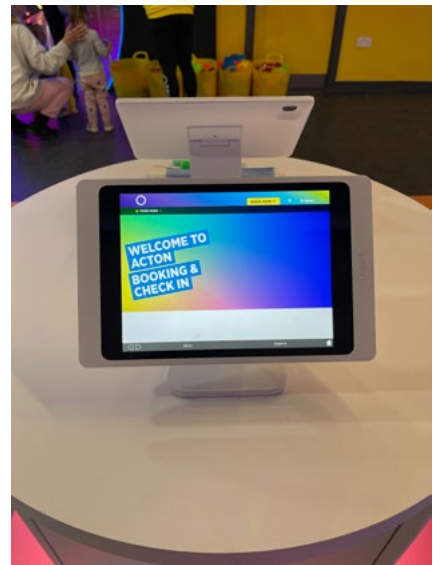
The UK’s premier indoor activity park chain recently acquired the space in Reading from another leisure provider. HiiLIFE will deliver bespoke technology solutions within a short timeframe over the summer, to ensure Oxygen can open the new venue for trading in October.

HiiLIFE’s technical response for Reading includes the installation of a bespoke LED party holding system, an immersive excite tunnel, digital menu

and marketing displays, and advanced audio-visual systems.

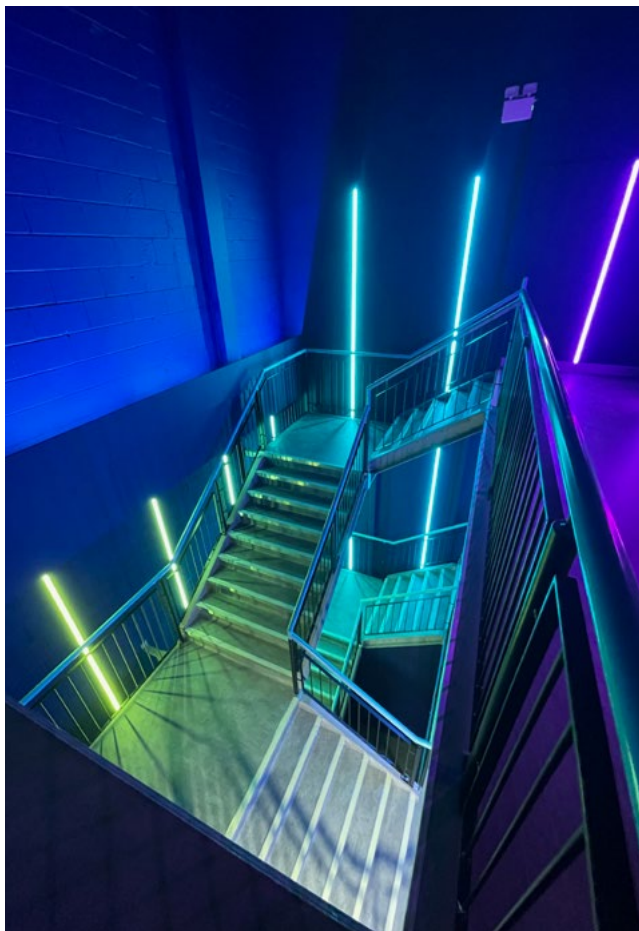
Tom Brittain, Managing Director at HiiLIFE said: “We are thrilled to further our scope of work with Oxygen Activeplay and contribute to its expansion across the UK. Our ability to deliver comprehensive, tailor-made solutions quickly and efficiently has been key to our successful projects with Oxygen, and we look forward to strengthening the relationship.”

The refurbishment marks the seventh collaboration between HiiLIFE and Oxygen since the successful relationship was established in 2022 when HiiLIFE worked on Oxygen’s Acton venue. Since then, HiiLIFE



“

HiiLIFE work closely with Oxygen and Zink Architecture to develop a vision for the Oxygen guest experience that would be rolled out across each site.



has played an integral role in delivering to Oxygen’s ambitious expansion plans.

HiiLIFE work closely with Oxygen and Zink Architecture to develop a vision for the Oxygen guest experience that would be rolled out across each site. The HiiLIFE team curated a versatile, bespoke technical solution that delivers an engaging, personalised experience for visitors and leverages cutting-edge technology to create a USP for Oxygen.

Bradley McNamara, IT Director at Oxygen Activeplay said: “HiiLIFE’s support and expertise has allowed us to bring our creative play concepts to life with remarkable speed and success. We find their versatility and comprehensive one-stop-shop service particularly useful. All of us at Oxygen are looking forward to continuing the relationship and seeing where our future projects take us.”

Find out more about HiiLIFE’s range of services at www.hiilife.com.



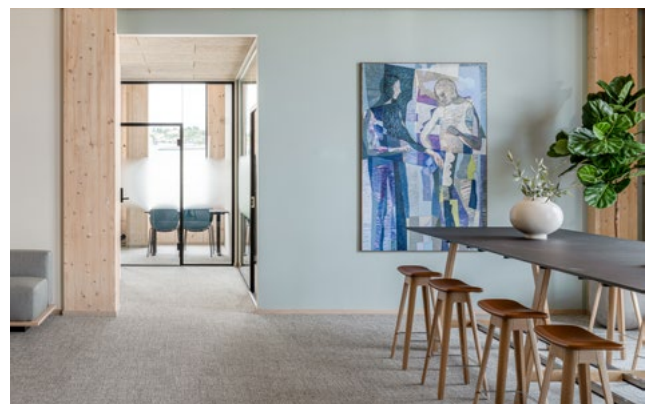


LUMBER 4 WINS THE AWARD FOR THE “BEST OFFICE BUILDING OF THE YEAR” IN THE MEDIUM-SIZED CATEGORY AT THE ARCHITIZER

OSLOTRE AS

LUMBER 4 Wins the Award for the “Best Office Building of the Year” in the Medium-Sized Category (5-15 floors) at the Architizer A+Awards

The office building in the town of Kristiansand is southern Norway’s first and largest commercial building made of mass timber. It has proven to be economically competitive against standard steel and concrete buildings. Designed by Oslo Architecture, and built in record time with a high degree of prefabrication and innovative solutions, the building achieved a 53% reduction in greenhouse gas emissions and is Taxonomy aligned.



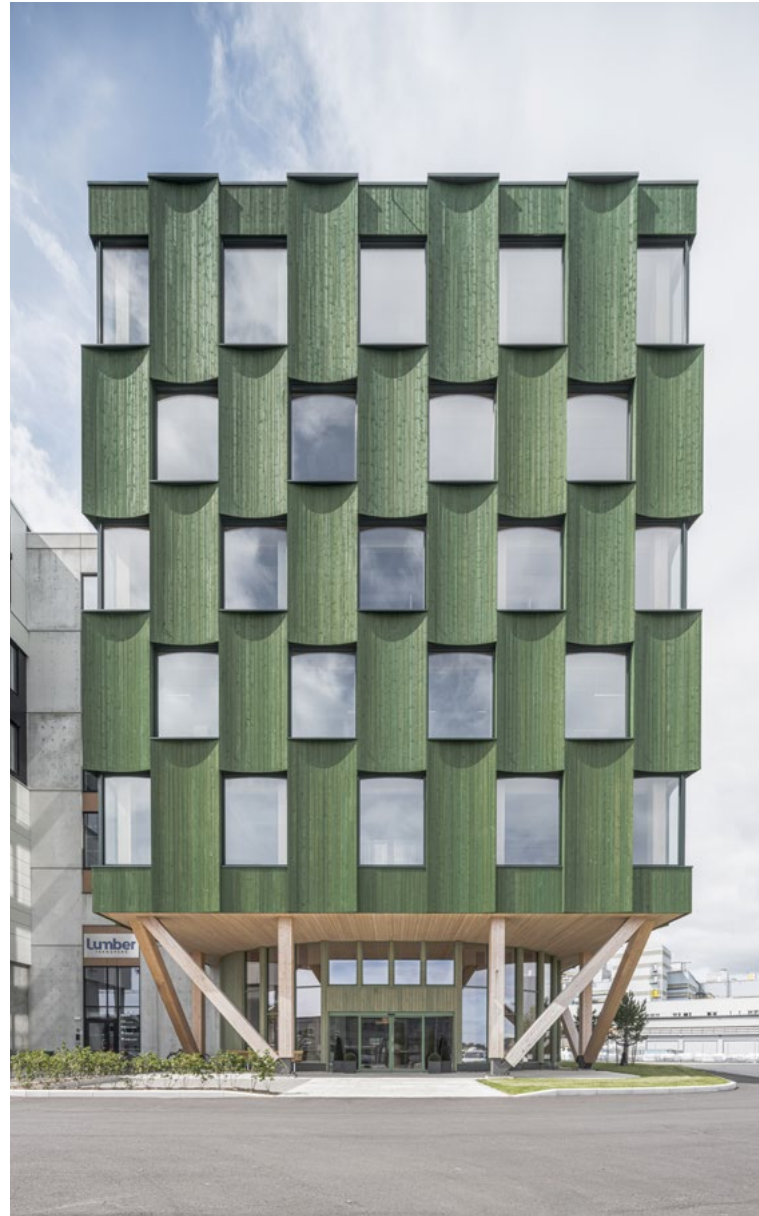
“

Winning this award for the world’s best mid-rise office building with our all-timber LUMBER 4 signifies a transformative shift in the construction industry.

The building is an all-timber building with wood as the constructive, insulating, and protective material. The innovative, green-painted, and curved wooden façade has gained international attention, making LUMBER 4 one of the most published buildings on social media globally in 2023. Today, LUMBER 4 serves as headquarters for Green Tech companies.

“Winning this award for the world’s best mid-rise office building with our all-timber LUMBER 4 signifies a transformative shift in the construction industry,” says a proud Jørgen Tycho, Creative Director at Oslo Architecture & Construction Technology. “We are advancing toward more sustainable, circular, and biologically-based architecture, a vision Oslo Architecture & Construction Technology has championed for nearly 15 years. It is immensely gratifying to see our efforts recognized.”

www.osloarchitecture.no





KENT CONSTRUCTION EXPO

THE BENCHMARK FOR SUCCESS AND INNOVATION

For over a decade, the Kent Construction EXPO has been the must-attend event for construction industry professionals in the South East. Recognised as the largest of its kind in the region, this annual event continues to set new benchmarks for success and innovation.

This year's event promises to be even bigger and better, with 175 exhibitors already booked (a sold out floorplan) and more than 20 individual sessions planned. These sessions will cover a wide array of topics within four key conference streams: Digital Construction, Sustainability, The Building Safety Act, and Procurement. Whether you're looking to enhance your knowledge, discover the latest industry trends, or connect with key decision-makers, the Kent Construction EXPO has something for everyone.





The impact of the EXPO is evident in its impressive statistics. The 2023 event saw a 15% increase in attendees compared to 2022.

One of the standout features of the EXPO is its unparalleled networking opportunities. From the exclusive Networking Breakfast to the prestigious Gala Dinner, the event is designed to facilitate meaningful connections among industry professionals. It's a true mecca for directors, owners, and key decision-makers, offering a unique platform to exchange ideas and address the most pressing challenges facing the sector.

The impact of the EXPO is evident in its impressive statistics. The 2023 event saw a 15% increase in attendees compared to 2022, continuing a trend of 10% annual growth since Revolution began staging the event in 2018. Remarkably, 97% of attendees reported that the event met their objectives, while 98% indicated they would consider doing business with an organization they met at the EXPO. Additionally, 98% expressed a desire to return to future events, underscoring the lasting value of the connections made at the EXPO.

It's no surprise that the Networking Breakfast places and Gala Dinner tables sell out each year. These events offer a relaxed, informal setting to forge valuable relationships and discuss potential collaborations. Whether you're a seasoned industry veteran or a rising star, the Kent Construction EXPO is the perfect event to expand your professional network and gain insights that can drive your business forward.

www.kentconstructionexpo.com





COUNTDOWN TO THE RCI SHOW 2024

INNOVATION, NETWORKING, AND INSIGHTS!

With just a month to go until the Roofing Cladding and Insulation (RCI) Show, at Stadium MK in Milton Keynes on the 24th October 2024, the time to register for your FREE ticket is NOW!

Brought to you by the RCI Magazine, we will be celebrating our eighth year as the UK's dedicated roofing, cladding and insulation show!

Over the years, the RCI Show has become a key date in the industry calendar for contractors, installers, surveyors and specifiers, and this year's vibrant one-day-only event is expected to attract significant visitor numbers coming to engage face-to-face with manufacturers, associations, suppliers and industry experts.

Whether you're looking to extend your network; get hands-on experience with the most up-to-date products and innovations; hear about the latest news, trends, and best practice guidance; or access thought-leadership content, then get down to the RCI Show and connect (or reconnect) with key experts across the entire roofing, cladding, or insulation supply chain.

That's not all! Our seminar programme will cover topics such as addressing ventilation in solar panel applications, AI in flat roofing, best approach to design in blue roofs, and a panel of industry experts discussing the new government's initiatives, focusing on planning reform, the 1.5 million homes targets and the establishment of Skills England.

Plan your day before you go to make sure you have time to bask in this industry knowledge and see the market-leading suppliers within the exhibition hall including this year's Headline Sponsor SIG Roofing.

2024 exhibitors include:

- 4 Cladding Services
- ACO Building Drainage
- Ascent™ - Safety Fabrications
- BeBa Energy UK
- Belfry Façade Systems
- Britmet Lightweight Roofing
- CCL FACADES
- CIDAN Machinery
- CTI
- Don & Low
- Filon
- Frénéhard
- Hambleside Danelaw
- James Hardie
- Juniper Training
- Knauf Insulation
- KoverTeK
- Kytun
- LRWA
- Mainline Products
- Marley
- New Guard Coatings
- Northstone
- Pentagon Specialist Products
- Permavent
- Rooflight Association
- Roytec
- Safety Fabrications
- Tapco Roofing Products
- Thermabead
- Welwyn Tool Group

Visit the website to find out more and secure your FREE ticket: www.rcishow.co.uk

HEADLINE SPONSOR



BROUGHT TO YOU BY

Mark Allen

rci show

ROOFING CLADDING & INSULATION

24 OCTOBER 2024

STADIUM MK, MILTON KEYNES

REGISTER FOR YOUR FREE TICKET TODAY!
WWW.RCISHOW.CO.UK

NEW ONE-DAY SHOW FORMAT!

2024 EXHIBITORS INCLUDE...



MEMBER OF THRACE GROUP



FOR MORE INFORMATION OR TO BOOK A STAND PLEASE CONTACT
TONY BROWN ☎ 07979 506896 ✉ tony.brown@markallengroup.com

FILON SUPASAFE

LONG-LASTING DURABILITY AND ENHANCE SAFETY

Preston North End FC recently embarked on a project to replace the ageing GRP translucent sheeting on The Town End Stand at the historic Deepdale Stadium. The main objectives of replacing the rooflight sheets were to improve the levels of natural daylight into the north facing stand; ensure long-lasting durability; and enhance safety.

INSTALLATION & RESULTS

The Filon Supasafe GRP rooflights, supplied through Ash & Lacy to match their 32/1000 metal profiled roof sheet, were installed during a break in fixtures by Manchester based roofing contractor, Environmental Roofing Services.

The new rooflights provide superior strength over standard GRP roof sheets, providing comparable impact resistance and load bearing capabilities to 0.7mm steel sheet; crucial for staff, visitor and maintenance team safety. Additionally, the improved level of natural daylight not only brightened the seating area it also created a more vibrant and inviting atmosphere.

IMPACT & BENEFITS

Filon Supasafe is a triple reinforced GRP sheet that incorporates a stitch-woven glass reinforcement layer to provide increased strength and impact resistance. When tested to ACR[M]001, it achieves a Class B non-fragility rating when new and for an expected period of 30 years.

The Supasafe rooflights were manufactured to achieve an SAA, Class 1 fire rating to BS 476 Parts 3 & 7 to provide compliant fire performance for this busy footballing venue.

With improvements in the stand's safety and ambiance, the enhanced natural lighting has reduced the need for



The new rooflights provide superior strength over standard GRP roof sheets.

artificial lighting during events, contributing to energy cost savings and reduced energy consumption. The durability of Filon Supasafe GRP will ensure a safe, well-lit venue for many years to come.

ENHANCED SAFETY

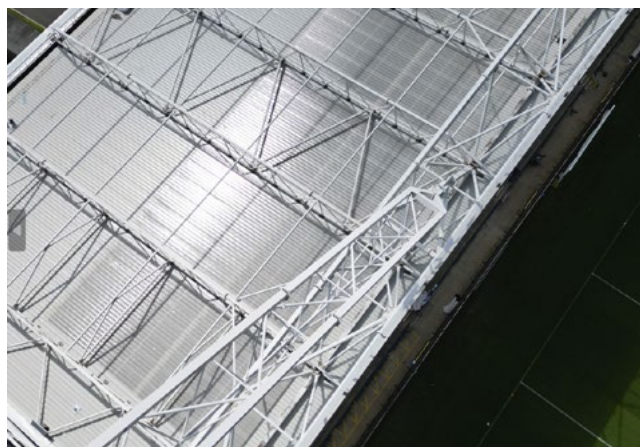
Filon GRP allows natural light into the north facing stand improving visibility and reducing accidents due to poor lighting. Supasafe GRP with Filon's unique light diffusing additives, which scatter light passing through, provide effective, evenly distributed, diffused daylighting without hotspots or excessive glare, reducing risk of trips or falls.

Supasafe triple reinforced GRP rooflight sheets have high levels of impact resistance and will withstand extreme weather conditions. The translucent roofing sheets are also highly durable and minimal maintenance is required to ensure long-term safety and functionality.

CONCLUSION

Thanks to the supply chain selecting Filon as the trusted manufacturer and specifying Supasafe GRP triple reinforced, translucent, rooflight sheets, Preston North End FC have a bright, naturally lit, Town End Stand that will provide a strong and safe roof for many years to come and hopefully see many glorious victories from the Lilywhites!

www.filon.co.uk



Profiled GRP rooflights & sheets **FILON HAS IT COVERED.**

Trusted solutions from the GRP construction products innovator: • Factory- and site-assembled rooflights • Opaque sheets • All current & discontinued profiles available • Standard & reinforced grades • Lightweight over-roofing • Chemical resistant grades • GRP barrel vault rooflights • Fixsafe safety fixing system • and more...



t: 01543 687300
e: sales@filon.co.uk



FILON[®]

Filon Products Ltd, Unit 3 Ring Road, Zone 2, Burntwood Business Park, Burntwood, Staffs WS7 3JQ

www.filon.co.uk

SHAPING THE FUTURE OF BUILDING WITH SWISSPEARL

WITH ITS PRODUCTS AND AMBITIONS, SWISSPEARL IS SUPPORTING MORE SUSTAINABLE BUILDING PRACTICES. HOW ARE THEY ACHIEVING THIS?

When it comes to sustainability, Swisspearl, a leading supplier in the building industry, takes responsibility for driving development in the right direction. The company creates high-quality fibre cement products that are durable and cost-efficient. These mineral composite solutions are designed for both exterior and interior applications, offering a range of benefits throughout their lifecycle.

Fibre cement, invented by Ludwig Hatschek in 1894 in Vöcklabruck, Austria, is at the core of Swisspearl's success. Today, these versatile products are manufactured across Europe, including facades, roofing, sub-construction, interior applications, and garden products. The high strength, non-combustibility, and long-term performance of fibre cement make it an ideal choice for sustainable buildings. Its multiple applications in lightweight construction deliver significant lifecycle benefits, including low maintenance costs and low cost of ownership.

Striving Toward Sustainable Production

On the production sites, it is crucial to minimise the use of raw materials. In 2023, Swisspearl achieved a 23% reduction in waste sent to landfill compared to 2022, with the goal of eliminating landfill waste by 2030. Swisspearl is dedicated to enhancing the recycling capabilities of fibre cement, contributing to a circular economy through innovative concrete recycling solutions.

These efforts exemplify Swisspearl's sustainability strategy, built on four pillars: Climate and Environment, Circularity, Social Responsibility,



and Governance. The company aims for carbon neutrality by 2040, zero landfill waste, and minimised wastewater by 2030. Swisspearl ensures employee safety, embraces diversity, and supports community welfare. Additionally, it explores recycling fibre cement waste and governs climate action through Science Based Targets.

Commitment to Certification and Continuous Improvement

Most Swisspearl products qualify for sustainable building design and construction certifications and are registered and approved in environmental databases. Swisspearl fibre cement products contribute to the various criteria evaluated when certifying buildings under a specific scheme, like DGNB, BREEAM, LEED, Nordic Swan label and Minergie-ECO. Swisspearl can support EPDs on a great variety of our products - and the list keeps expanding month by month.

Looking ahead, Swisspearl remains steadfast in its dedication to sustainability and innovation. The company continuously seeks to improve its products and processes, setting ambitious goals to enhance environmental performance. By investing in research and development, Swisspearl aims to pioneer new sustainable building materials and solutions, ensuring the company remains at the forefront of the building movement.

To find our more visit [swisspearl.com/en-uk](https://www.swisspearl.com/en-uk). Or if you're coming along to UK Construction Week, on 1-3 October, visit us at Stand B130



SWISSPEARL



swisspearl.com



Swisspearl Patina Original

Swisspearl Patina Original has created an authentic, dramatic facade for an award-winning development of modern Zero Carbon and energy efficient homes at Stables Yard in London.

The project won Best Use Of Fibre Cement Cladding and RCI Project of the Year at the 2023 Facade awards, and was shortlisted for 2023 Best Housing Project of the Year (Under £5 million) by the Architects Journal.

Swisspearl Patina Original facade patinates beautifully over time, adding unique and subtle variations to the surface so that these beautiful homes will look even better in future years. Our specialist facade team worked with Interco Contracts and award-winning architects Stolon Studio on this fantastic project.

To find out more or to order a sample, visit [swisspearl.com/en-uk](https://www.swisspearl.com/en-uk) or email us at info@gb.swisspearl.com

DORSET COUNTY HOSPITAL MSCP

MEETING THE CHALLENGE OF COMBINING AESTHETICS AND REGULATIONS

Dorset County Hospital is located just outside Dorchester town centre. This modern hospital provides a full range of district general services, including an accident and emergency department, and links with satellite units in five community hospitals. As the main provider of acute hospital services to a population of around 300,000, ample parking space is required at all times.

It was decided that a multi-storey car park (MSCP) should be built to keep pace with demand. Due to new and stricter public regulations combined with the desire for aesthetic freedom, the task presented several challenges.

Challenges and wins

The design and construction of multi-storey car parks are receiving a lot of attention in the UK. It gives status to develop aesthetic garages and prizes are awarded every year for the best MSCP architecture - RMIG Solutions has contributed to many significant projects within this field.

At the same time, the regulations and legislation for MSCPs are being tightened all the time in the UK. This applies to the guidelines for light and ventilation, and to a large extent to the rules for fire safety. RMIG Solutions joined the project at an early stage and their experience



The design and construction of multi-storey car parks are receiving a lot of attention in the UK.

and expertise within this field was a great advantage, enabling those involved to find the best possible solution.

After a public vote, three images from the beautiful Dorset countryside had been selected for illustration on the facade had to be processed so that they could meet the requirements for open areas for light and ventilation.

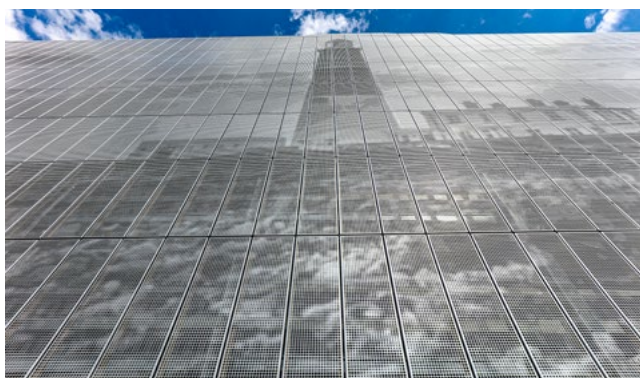
The images were successfully processed and the results were remarkable! Through a bit of wizardry, it was possible to change the photos from portrait format to landscape format which made it possible to merge the creative wishes of the architects with what was technically possible to allow light and air in for the users. It is always a compromise when it comes to MSCPs, but even though ventilation requirements reduce the contrast in the images, they still stand out and give residents a great impression of the Dorset landscapes.

Finally, numbers could be stamped directly on each element in the production line so there was never any doubt as to where and in what order they should be installed. This made the on-site mounting process much easier for the customer.

Technical characteristics

Size of the project: 3,400 m²
Material: Coated aluminium
Pattern: RMIG ImagePerf
Thickness: 3.0 mm
Finishing operation: Bending

rmigsolutions.com



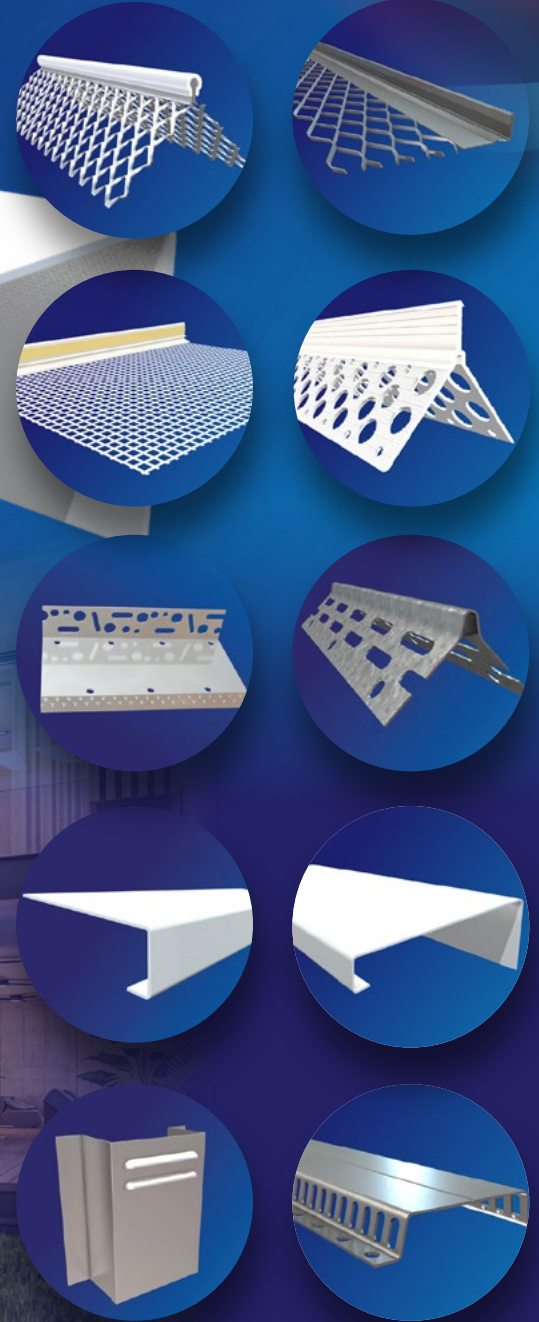
TRUeline

PRODUCTS

CELEBRATING 30 YEARS IN MANUFACTURING

30

YEARS
ANNIVERSARY



Trueline Products are a leading UK manufacturer specialising in Render Beads, Expanded Metal Products and Bespoke Fabrications for External Wall Insulation Render (EWI) and Facades. From design to development, we provide an innovative and efficient service for the construction industry.

- Specialists in EWI Beads, Trims & Accessories
- Bespoke Fabrications
- On-site Punch, Laser & Welding Facilities
- In-house Powder Coating Paint Lines
- Extensive Stock Capacity
- Short Lead Time
- On Site Survey & Design Team
- Full UK Coverage - Stock held in Kidderminster & Glasgow

TRUeline
LASER

TRUeline
FABRICATIONS

TRUeline
EWI BEADS & PROFILES

TRUeline
COPINGS

For more information

Call +44 (0)1562 823267

✉ enquiries@truelineproducts.co.uk

UK Head Office
01562 823 267

Scotland Office
01698 252942

www.truelineproducts.co.uk





THE PERFECT CHOICE

BUILDING SYSTEMS UK PRODUCTS USED FOR NEW KOHLER MIRA DISTRIBUTION CENTRE IN WORCESTER SIX BUSINESS PARK

Mira showers opened their new distribution centre at Worcester Six business park in the Spring of 2022 utilising a building envelope designed with the specifications of Building Systems UK site-assembled and insulated panel solutions for roof and wall cladding.

Building Systems UK's Trisobuild® site assembled roofing and cladding system was chosen with over

19,000 linear metres used for the roof and nearly 5,800 linear metres to form the walls. The Trisobuild® system can be tailored to meet the specific requirements of a project by offering design flexibility of internal and external profiles ranging from 19mm to 46mm deep. For this project, R32 and C32 profiles were chosen for most of the roof and wall profiles respectively and came with Colorcoat® prefinished steel in a range of colours.

By specifying wall and roof products from Building Systems UK with Colorcoat® products, Mira Showers were reassured by the supply of the 40-year Confidex® Guarantee covering the long-term performance of the finish. As the roof was going to be housing 1,560 solar panels, Trisobuild® with Colorcoat HPS200 Ultra® pre-finished steel was chosen. The Colorcoat HPS200 Ultra® pre-finished steel included a Galvalloy® metallic coating for the ultimate corrosion resistance and cutting edge performance and, as the Confidex® guarantee covered its use under a PV array, it was the perfect choice for the project.

Trisobuild® also comes with Loss Prevention Certification Board (LPCB) approval to LPS 1181 part 1 for fire performance, helps to lower insurance premiums.

+44 (0)1244 892199
technical.envelopeproducts@tatasteelurope.com



Saving for a rainy day...

UNI-DAM, a rainwater management system designed to prevent heavy storm rainfall from overwhelming gutter systems and flooding into buildings.

The system is fixed to the roof and once installed slows and controls the flow of rainfall into the gutter.

For more information or quote please contact our office on 01384 252777.



AMPTEAM

Unrivalled excellence in gutter lining technology.
www.gutterliners.com

Imitation is always flattery...

But none can match the excellence of a system that is truly complete

THE UNIFOLD GUTTER LINING SYSTEM.

Having faced and solved every problem experienced in its long life with consummate ease **UNIFOLD** remains THE **GOLD STANDARD** to which others aspire!

UNIFOLD – Unrivalled excellence in Gutter Lining Technology.



AMPTEAM

UNIFOLD® Unrivalled excellence in gutter lining technology.
www.gutterliners.com

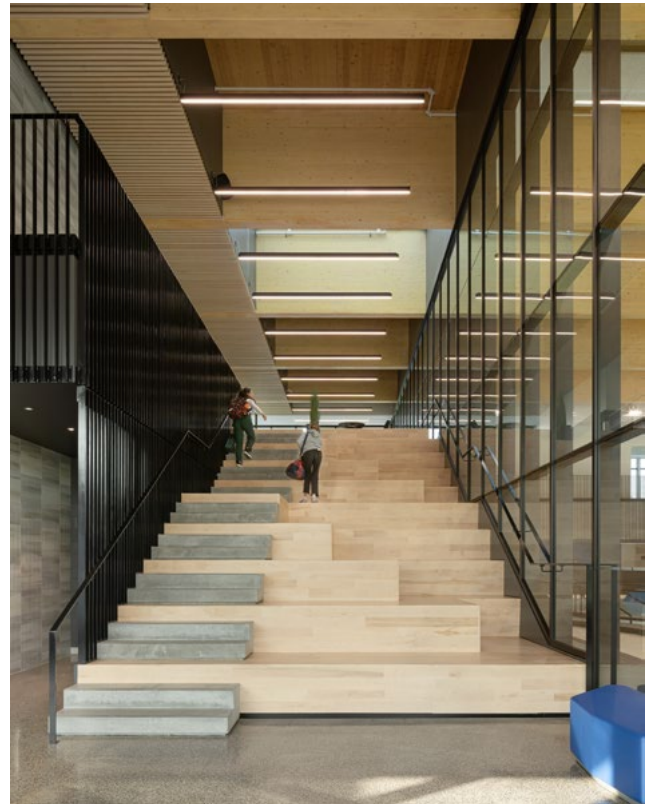
THE SAINT-GEORGES MULTISPORT COMPLEX: BRIGHT & WELCOMING

CONNECTED TO THE HIGH SCHOOL, THE NEW SPORTS COMPLEX EMPHASIZES WOOD AND LIGHT

Connected to the Saint-Georges High School, the new Saint-Georges Multisport Complex is the result of a joint effort by the Beauce-Etchemin School Service Center and the City of Saint-Georges to provide top-tier sports facilities for students and citizens. Designed by ABCP architecture, in consortium with Marie-Lise Leclerc architecte and Bilodeau Baril Leeming architects, the complex includes a double gymnasium, a recreational pool, a semi-Olympic pool with 10 lanes, as well as classrooms. It stands out for its wooden structures, large bay windows, perforated, diamond-patterned envelope, and energy performance. Inaugurated in the summer of 2023, it was quickly embraced by the community.

Integration into a 1974 building

The new structure extends lengthwise, parallel to the outdoor track, and connects to the high school at ground level. The sloping topography of the site was utilized to provide several ground-level entrances, accommodating all users, including those with reduced mobility. On the south side, visitors are invited to proceed to the main entrance along a curtain wall overlooking the pool, and sheltered by a marquee.





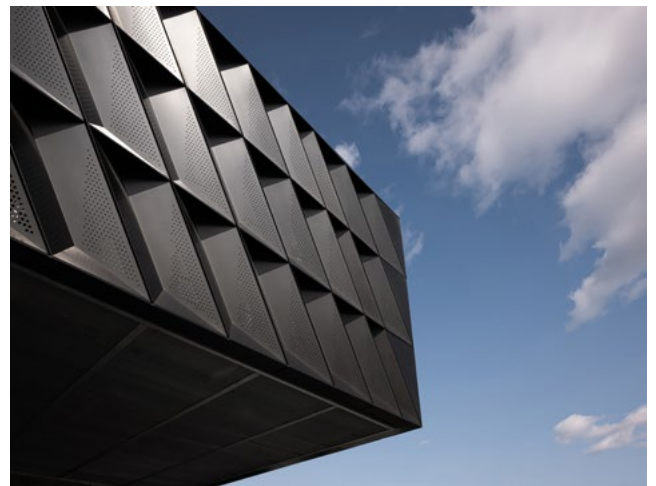
“

Particular attention has been paid to the acoustic ambiance of these large glass spaces to maintain reverberation times below 1.5 seconds.

In its architectural treatment, the expansion adopts and reinterprets the modern heritage codes of the high school, dating back to 1974. Inspired by the existing building, which features a base with concrete walls and buttresses topped with metal cladding, the new structure integrates by revisiting the stratification of levels. A fully glazed base aligns with the concrete sections, while a perforated aluminum cladding with a diamond effect evokes the angulation of the elevated buttresses.

Brightness in all directions

The horizontal and vertical circulations are designed to be simple and readable. The bright, two-story reception hall leads to the aquatic pools on one side and the gymnasium on the other. The swimming pool's changing rooms and lifeguard offices are centrally located, while the sports organizations' offices and gymnasium changing rooms are arranged along a glass agora overlooking the outdoor forecourt, aligned with the connection to the high school.





In the gymnasium, large openings generously allow natural light to enter from the north, while it is diffused by the perforations in the aluminum cladding on the south. The aquatic area, comprising a 10-lane, 25-meter sports pool with 1 and 3-meter diving boards, features an access ramp designed for people with reduced mobility, and a recreational pool with a beach entry and water games. The space is abundantly glazed, bathing it in natural light. On the south side, a curtain wall runs along the forecourt, and a canopy mitigates the direct sunlight into the pools.

At the heart of the complex, a wooden tiered staircase offering a direct view of the pools becomes a place for meeting and socializing. On the second level, there is a multifunctional room, four classrooms, bleachers, and the upper foyer. Continuing from the reception hall, and enjoying the view of the pools, this foyer provides another space for relaxation, meetings, and study, as well as access to the 250-seat bleachers in the pool area, and the 100-seat bleachers in the gymnasium section.

Throughout the complex, the immense bay windows and skylights maximize the influx of natural light. In the gymnasium, skylights nearly 20 meters long allow zenithal light to penetrate. To control brightness, the fenestration is clear and unobstructed on the north facade, while it is filtered by a second skin of perforated aluminum on the south facade.

Comfort, warmth, and energy efficiency

Particular attention has been paid to the acoustic ambiance of these large glass spaces to maintain reverberation times below 1.5 seconds. Serving as both interior finish and envelope support, perforated acoustic panels filled with insulating wool to minimize echo have been installed on the walls of the pool and gymnasium. Fabric-covered acoustic panels cover the hard surfaces in the upper parts of the gymnasium, while cement-



“

Bright and welcoming, the Saint-Georges Multisport Complex is open and connected to its environment.



bonded wood fiber tiles are used in the pool area. In the common areas, acoustic comfort relies on a suspended ceiling of high-performance acoustic tiles behind the wooden slat structure, while the wooden roof structure offers superior sound absorption compared to many materials.

The massive wooden roof structure is an innovative and distinctive element of the complex. The impressive beams in the pool area, 56 meters long and spaced every 5 meters, are topped with CLT (Cross-Laminated Timber) panels. With a free span of 28 meters in the gymnasium, and 34 meters above the sports pool, they are highlighted by natural light. In addition to its architectural quality, this wooden structure contributes to environmental efforts by sequestering more than 670 tons of CO₂.

The triple-glazed curtain walls, architectural concrete, and aluminum cladding that make up the envelope were chosen for their durability, and their energy performance surpasses the requirements of Quebec's new energy code. The mechanical systems consume less than 20% fossil fuel, while all other energy sources are renewable. The complex is equipped with a ventilation system that recovers energy during pool air dehumidification, prioritizing the heating of the two pools via water-cooled condensers, in addition to heating the pool enclosure, bleachers, and some peripheral rooms. The exhausted air is directed to a heat exchanger

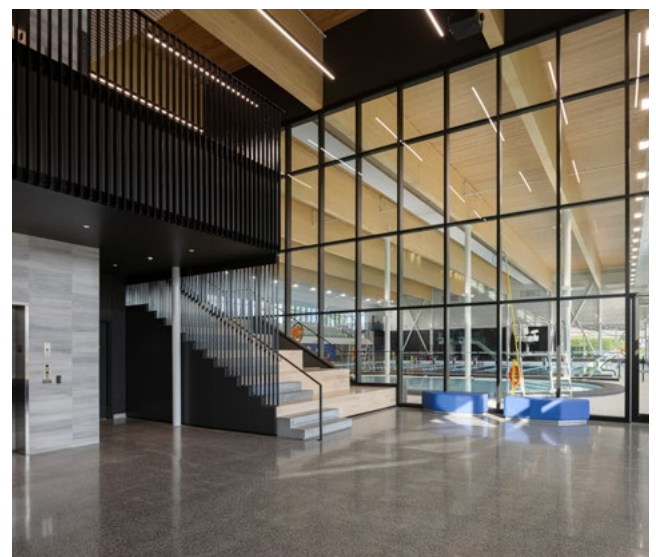
to preheat 90% of the fresh air admitted into the building. During unoccupied periods, or when there is a lack of humidity in the pool enclosure, the amount of fresh air admitted will be reduced.

The energy performance of the architectural and electromechanical systems exceeds that of the model building by 23%, resulting in a 20% reduction in annual energy costs, which is exemplary for a building of this type. The complex's GHG emissions are 44.8 tons of CO₂ eq/year lower compared to the Quebec Ministry of Education's model building.

Public Award

Bright and welcoming, the Saint-Georges Multisport Complex is open and connected to its environment. This achievement won the Public Award at the Ordre des architectes du Québec's Excellence Awards in April 2024, just one year after its opening. This recognition reflects the impact of quality architecture on a community and its strong appeal, much to the satisfaction of its initiators.

www.abcarchitecture.com



A LUXURIOUS ADDITION

DESIGNING AND BUILDING SWIMMING POOL, SPA, AND WELLNESS FACILITIES INTO YOUR PROJECTS

Incorporating a swimming pool, inground spa, and wellness suite into a residential or commercial project can provide luxurious and valuable additions. These facilities offer a dedicated space for exercise and improving health and wellbeing for domestic clients. For commercial clients, they create inviting social spaces. Designing and constructing these facilities requires careful planning and expertise to meet safety standards and ensure long-term durability.

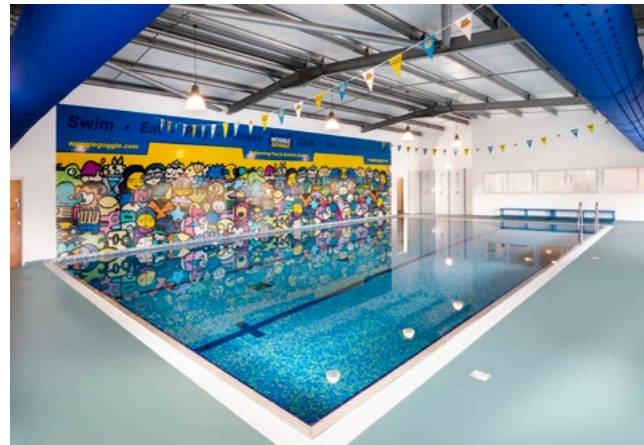
Clients often have specific ideas about their wet leisure project's appearance, features, and impact on their lifestyle or business. Numerous factors need to be considered. Specialist advice and assistance from a SPATA member can help bring these ideas to life practically and cost-effectively, ensuring the project meets timescales and budgets with a quality guarantee.

With over 60 years of experience, SPATA (the Swimming Pool and Allied Trades Association) works with companies that build and install swimming pools, spa pools, and wellness facilities. SPATA members adhere to the industry standards set by SPATA and follow a code of ethics, providing clients with peace of mind regarding the future ownership of their new pool, spa, and wellness suite.

SPATA offers resources for businesses incorporating wet leisure products into their building projects, including a nationwide list of members and a register of commercial contractors. SPATA also has an Allied Trades membership category for consultants, designers, engineers, architects, service organisations, and others involved in the pool industry.



www.centurionleisure.co.uk



www.whitewaters.co.uk

SPATA's sister company, BISHTA (British and Irish Spa and Hot Tub Association), sets the standards for hot tubs and swim spas, ensuring safety, enjoyment, and quality. BISHTA provides guidance on best practices, water hygiene management, and technical standards, with members nationwide who deliver exceptional products and services. For more information, visit www.bishta.co.uk.

Another excellent starting point is SPATEX, the UK's only dedicated international spa, pool, and wellness show. SPATEX is free to attend and will take place from 4 to 6 February 2025 at the Coventry Building Society Arena, Coventry. For more details, visit www.spatex.co.uk.

To learn more about SPATA, find design inspiration, and connect with one of our members, visit www.spata.co.uk.



www.buckinghampools.com



Building Relaxation, Health & Wellness into your projects...



...turning your client's dream into a reality



These stunning projects were built by SPATA members.

SPATA sets the standards for the Industry and registers companies into its membership that build and install swimming pools, plunge pools, in-ground spas, saunas, steam rooms, wellness and associated products and services, and agree to abide by the SPATA code of ethics.

For more about SPATA - the Swimming Pool and Allied Trades Association, and to find your local SPATA members, please visit; www.spata.co.uk





SUSTAINABLE TIMELESSNESS

AGROB BUCHTAL

The Tinnerbäcksbadet, realised by the architectural office 3XN around 200 kilometres southwest of Stockholm, presents itself as a spatial composition in earthy-warm colours. 18,000 m² of ceramic tiles from Agrob Buchtal play a key role here. The durable material made of natural raw materials not only contributes to the timelessly elegant room atmosphere, but also promises a long service life - one of the most important basic requirements of sustainable architecture.

Tinnerbäcksbadet, which opened in 1965 on a bathing lake in Linköping, was becoming outdated. Because its surroundings were also to be redensified, the city initiated an international architectural competition

for a new building with significantly expanded facilities. The sensitive integration of the new building into the urban planning situation was a key factor in the success of the competition by Danish office 3XN. The architects designed a building that presents itself as a clearly structured, compact volume on the new neighbourhood square, while its undulating floor plan at the rear of the building enables flowing transitions to the green space around the bathing lake.

The main entrance, all the changing rooms, and the training and therapy pools are located on the ground floor of the building section on the neighborhood square. The fitness and spa area with whirlpool, steam bath, saunas, and relaxation basin are located above.

“

The pleasant room atmosphere is primarily the result of the room-forming surfaces in warm earthy tones and natural building materials



The spatial program also includes a 25-metre pool and a 50-metre sport pool, a diving basin, and a family pool with water slides, children's- and wave -pool, spread over three structures facing the lake in the form of wave crests. Circumferential, diagonally-cut window strips and irregularly corrugated sheet metal panels form a unifying building envelope inspired by water as a natural, dynamic element.

Natural materials and colors

The pleasant room atmosphere is primarily the result of the room-forming surfaces in warm earthy tones and natural building materials, which have contributed to the Tinnerbäcksbadet achieving the Swedish Miljöbyggnad sustainability certificate in silver. In addition to ceiling acoustic panels made of

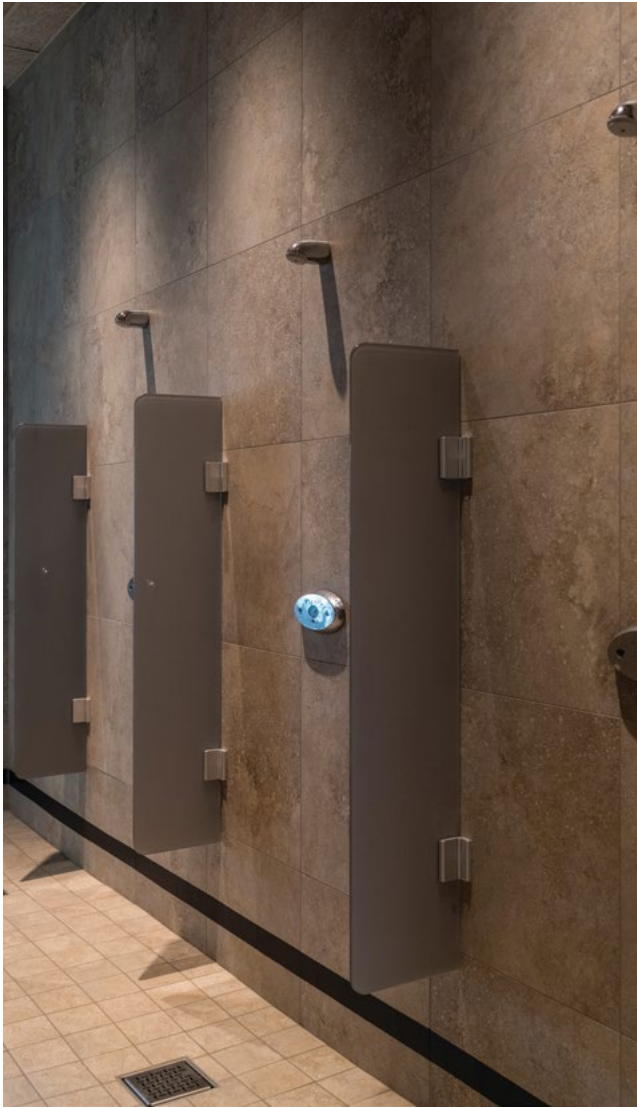
cement-bonded wood wool, and wall panelling made of filigree wooden slats, the lively structured floor catches the eye: beige porcelain stoneware tiles in 600 x 600 mm format from the Savona series by Agrob Buchtal.

The Savona tiles can also be found in all public areas on the ground floor: in the foyer and in the restaurant, but also on the path from the side entrance to the 1400-seat spectator stand at the 50-metre competition pool. The transition to the changing area is immediately recognisable to swimmers. Here - as in the adjoining bathing areas - the Chroma Pool series is used and characterises the flooring in sand grey.

Soft shapes, flowing transitions

Natural materials also characterise the bathing areas. Ceiling trusses and acoustic panels, as well as wooden wall panelling, harmonise here with the sand-grey Agrob Buchtal tiles of the pool surroundings and the bluish shimmering water basins. For seamless transitions, almost all of the pools are fitted with Chroma Pool in white-grey. The family pool area is an exception. Here, active white 25 x 25 mm mosaic tiles cover the elegantly curved pool walls and edges. Plural makes it possible to experience the various areas - from the counter-current system to the gently flowing beach of the wave pool - as a coherent, circular bathing landscape, both in plan and in cross-section. Another special feature are the custom-made channel stones of the Wiesbaden system from Agrob Buchtal. A recess on the side facing the water enables flush tiling up to just below the drain edge, so that the channel in this area is almost completely covered by the mosaic and is perceived as part of the pool wall. Similarly dynamic shapes, modelled from the same mosaic tiles (albeit in light sand grey), can be found in the spa area - where they are again combined with Savona.





Using the design potential of the tiles

Another characteristic feature of the pool landscape are the many handcrafted, customised detail solutions - such as the linear flat channels from Agrob Buchtal. They serve to ensure optimum surface drainage in the area of the pool surroundings, and also require only a few mitre cuts, making the pool surroundings appear as a single surface. In addition, they enable the floor tiles to be laid in a thin bed, saving both material and time. How the architects use the design potential of the Chroma Pool series naturally and routinely can also be seen in the starting block pedestals at the 50-metre competition pool, and in the edges along the glass façades, which are designed as benches. Both were clad with tiles in such a way that they appear to have merged with the floor.

Sustainability through design

There is a design logic behind the recognisable desire for a consistent appearance. The ceramic tiles not only fulfill all functional requirements - for example durability, slip resistance, cleaning, and hygiene - but they also ensure that the Tinnerbäcksbadet is intuitively understandable. As the entire swimming pool ultimately follows this logic, and also thanks to the timeless, colour-restrained design, the result is a building that will not wear out either physically or visually in the long term. The design by 3XN is therefore aimed at a long service life - probably the most important basic requirement for sustainable building concepts, even before the use of sustainable building materials.

www.agrob-buchtal.de



Photos: agrob-buchtal.de / Foto: ©Rasmus Hjortshøj

ARCHE TECH

Turning Dreams into Reality



FREE DIGITAL MAGAZINE SUBSCRIPTION

The Archetech magazine is an insightful information source for **Architects, Architectural Technologists** and **Interior Designers**. We feature lead stories on current projects, industry news and case studies so that our readers have the opportunity to keep up to date in the ever changing world of architecture and design.

Subscription enquiries:
Call 01304 806039
Email: info@archetech.co.uk

Advertising enquiries:
Steve Hawkins - 01227 936974
Email: steve@archetech.co.uk

Editorial submissions or enquiries:
Antony Holter - 01304 806039
Email: antony@archetech.co.uk

Ny and improved stone wool insulation

Specify the most thermally efficient stone wool insulation currently available in the UK & Ireland across two core solutions.†



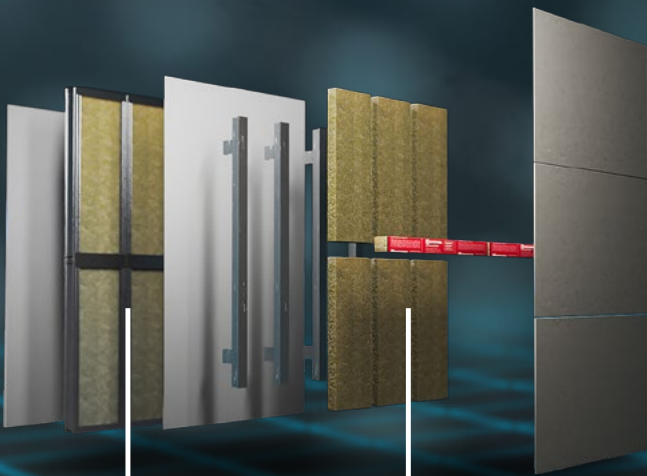
Low lambda value –
0.032 W/mK



Non-combustible,
Euroclass A1 rating



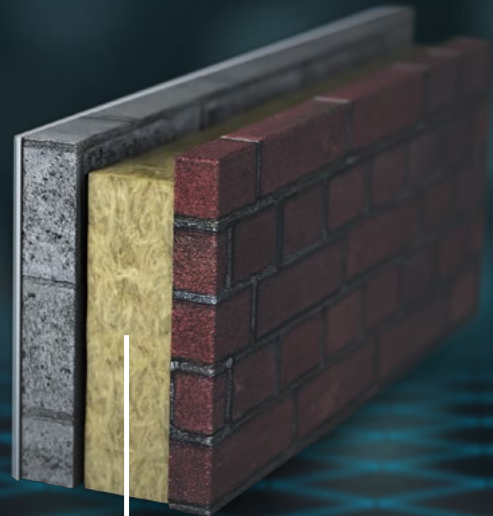
Proven to last throughout
a building's lifetime*



**NyRock
Frame Slab
032**

A combined solution for external
walls, rainscreen and façades.

**NyRock
Rainscreen
032**



**NyRock
Cavity
Slab 032**

Cavity insulation for full and
partial-fill applications.



Choose your
NyRock® solution

rockwool.com/uk/nyrock-solutions



† Correct at time of sending, based on publicly available performance data of comparable stone wool products

* FIW (German test and research institute), Durability Project Mineral Wool, 2016