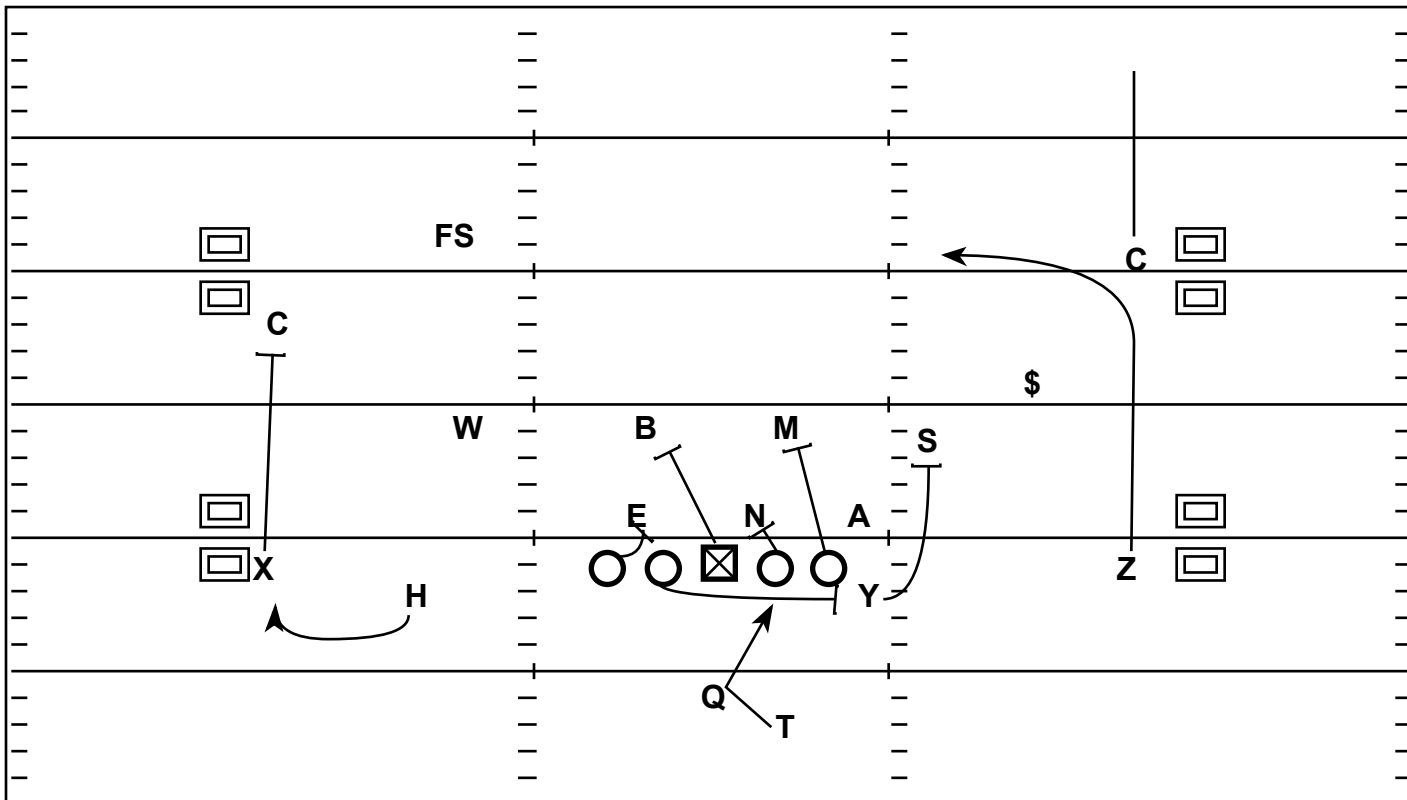


2x2 Wing: Counter FS Glance

LSU



Strategy: Keep the structure of the scheme the same while presenting a different look. Instead of base power they Arc and Counter

QB Progression/Read: Pre-Snap the Bubble (Numbers) Post-Snap Space RPO with the Glance

X - Block Corner

H - Bubble

Y - Arc to Sam Linebacker

Z - Glance

T - Counter Jab, Stay Tight to Wall

LT - Cut-Off Backside End

LG - Open Pull Wham C-Gap Defender

C - Track up to Buck Linebacker

RG - Down Block Nose

RT - Vertical Track to Mike Linebacker