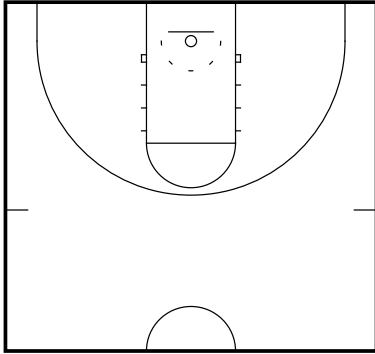


Pick and Roll Defense

"Soft Hedge" Coverage

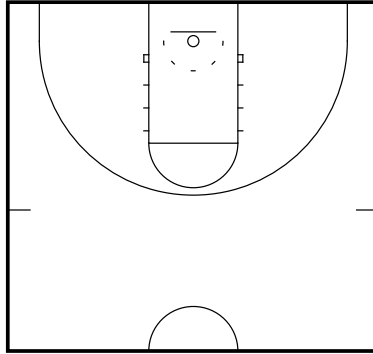
Pick and Roll Defense- "Soft Hedge"
Frame 1



"SOFT HEDGE"

The screener's defender will slide out to stop the ball handler from driving or coming directly off the screen.

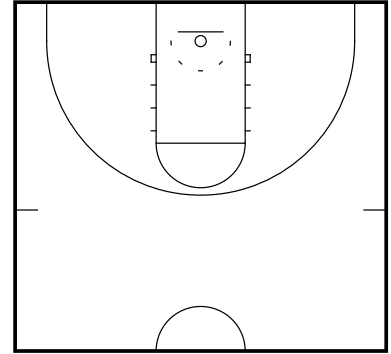
Pick and Roll Defense- "Soft Hedge"
Frame 2



Synonyms:

- "Soft Show"

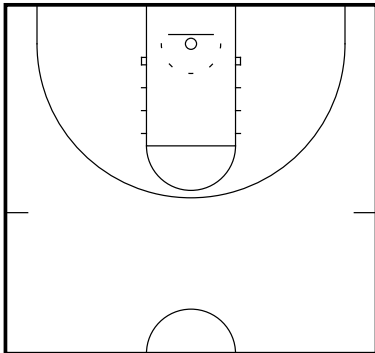
Pick and Roll Defense- "Soft Hedge"
Frame 3



Advantages:

- Eliminates opportunity for guard to turn the corner off the ball screen
- Forces ball handlers who are not good shooters off the dribble to take pull-ups
- Makes it easier to recover to pick and pop/roll man, prevent roll pass, and prevent the screener from slipping the screen

Pick and Roll Defense- "Soft Hedge"
Frame 4



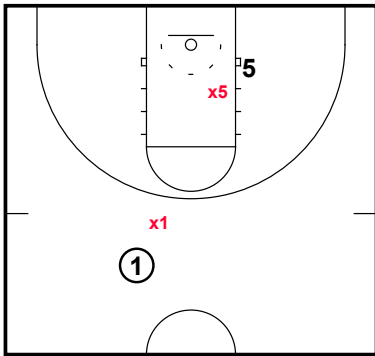
Disadvantages:

- Opportunities for ball handler an open jump shot after dribbling off the screen
- Foul pressure on defensive big
- Poor hedge could lead to attack off the ball screen
- Off ball defenders may require to help or rotate

Pick and Roll Defense

"Soft Hedge" Coverage

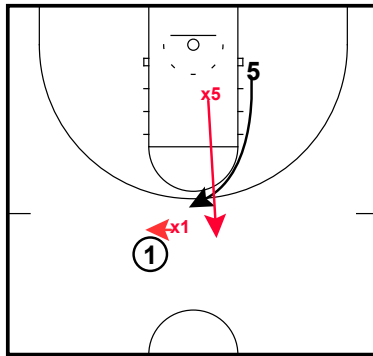
Pick and Roll Defense- Breakdown Middle
Ball Screen (Soft Hedge)
Frame 1



An adjustment to the "Hard Hedge" is to adjust how aggressive the defensive big hedges on the ball screen.

When guarding a skilled perimeter big or a ball handler that is not a perimeter shooting threat, the defense can adjust by utilizing a "**SOFT HEDGE**."

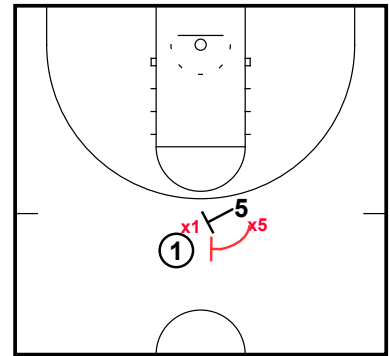
Pick and Roll Defense- Breakdown Middle
Ball Screen (Soft Hedge)
Frame 2



As soon as x5 recognizes that the offense is setting a ball screen, he immediately communicates with x1 by calling "screen [direction]".

When x1 hears x5 call out the screen, he immediately shifts his positioning to force the ball into the screen.

Pick and Roll Defense- Breakdown Middle
Ball Screen (Soft Hedge)
Frame 3



As 5 is going to set the screen, x5 steps up and positions himself early.

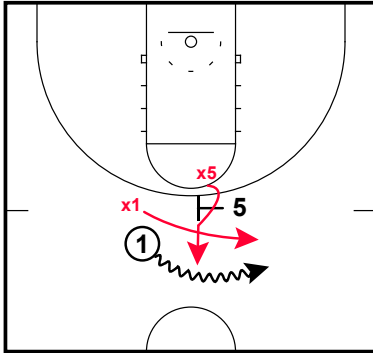
x5 positioning:

- chest parallel to the sideline
- low and wide stance
- "extension of the screen" --> inside hand on screener (5). Having a hand on the screener is key as it helps eliminate the chance of being split by the ball handler.
- high, wide arms/hands. This makes the show wider and eliminates the defender from picking up a cheap hand check foul.

Pick and Roll Defense

"Soft Hedge" Coverage

Pick and Roll Defense- Breakdown Middle
Ball Screen (Soft Hedge)
Frame 4



x1 forces the ball handler into the screen and the show man.

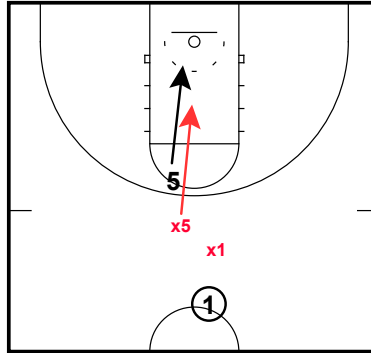
As the ball handler attacks, it is x5 job to drive the ball handler up the floor towards the half court line.

In a hard show, x5 will give 2 hard slides up the floor...but in a "soft hedge," x5 will NOT slide up the floor. Instead, he will be low, wide, and remain an extension of the screen. He will keep contact with the screener by having a hand on the screener. This allows x5 to maintain contact with the screener and at same time forces the ball-handler to alter his route.

x5 must be very careful as to not commit a blocking foul when hedging as the ball handler attacks. He must be in a stance with active feet, have arms out, and hands to the sky.

x1 goes over the screen and under x5 taking an angle to cut off the ball handler and square the ball up. x1 may also go under the screen if the ball handler is not a threat to make a perimeter jumper.

Pick and Roll Defense- Breakdown Middle
Ball Screen (Soft Hedge)
Frame 5



x1 will square up the ball and x5 will recover.

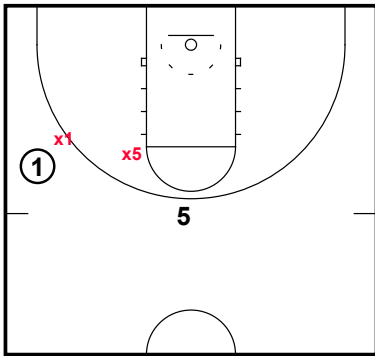
x5 recovery will be based on communication from other big- he may recover to own man or they may have "x-out" (switch).

x5 sprints with high hands in recovery.

Pick and Roll Defense

"Soft Hedge" Coverage

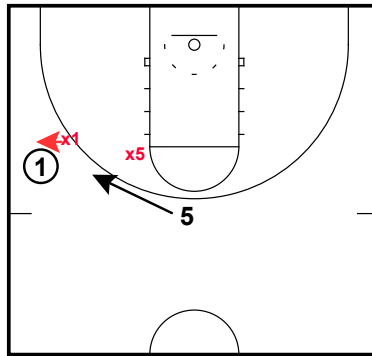
Pick and Roll Defense- Breakdown Wing
Ball Screen (Soft Hedge)
Frame 1



An adjustment to the "Hard Hedge" is to adjust how aggressive the defensive big hedges on the ball screen.

When guarding a skilled perimeter big or a ball handler that is not a perimeter shooting threat, the defense can adjust by utilizing a **"SOFT HEDGE."**

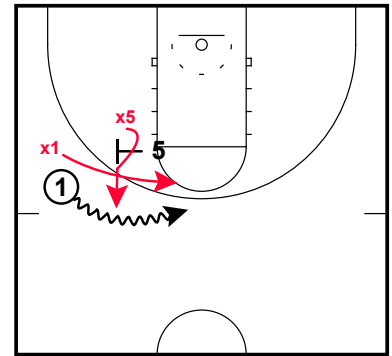
Pick and Roll Defense- Breakdown Wing
Ball Screen (Soft Hedge)
Frame 2



As soon as x5 recognizes that the offense is setting a ball screen, he immediately communicates with x1 by calling "screen [direction]".

When x1 hears x5 call out the screen, he immediately shifts his positioning to force the ball into the screen.

Pick and Roll Defense- Breakdown Wing
Ball Screen (Soft Hedge)
Frame 3



As 5 is going to set the screen, x5 steps up and positions himself early.

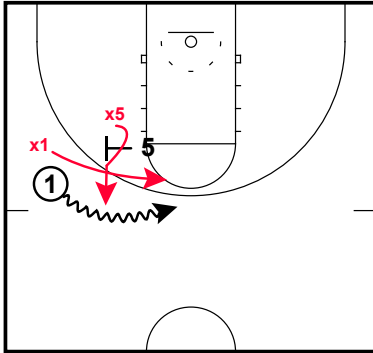
x5 positioning:

- chest parallel to the sideline
- low and wide stance
- "extension of the screen" --> inside hand on screener (5). Having a hand on the screener is key as it helps eliminate the chance of being split by the ball handler.
- high, wide arms/hands. This makes the show wider and eliminates the defender from picking up a cheap hand check foul.

Pick and Roll Defense

"Soft Hedge" Coverage

Pick and Roll Defense- Breakdown Wing
Ball Screen (Soft Hedge)
Frame 4



x1 forces the ball handler into the screen and the show man.

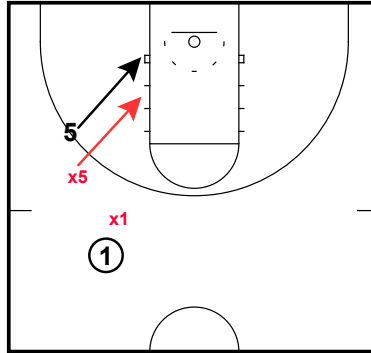
As the ball handler attacks, it is x5 job to drive the ball handler up the floor towards the half court line.

In a hard show, x5 will give 2 hard slides up the floor...but in a "soft hedge," x5 will NOT slide up the floor. Instead, he will be low, wide, and remain an extension of the screen. He will keep contact with the screener by having a hand on the screener. This allows x5 to maintain contact with the screener and at same time forces the ball-handler to alter his route.

x5 must be very careful as to not commit a blocking foul when hedging as the ball handler attacks. He must be in a stance with active feet, have arms out, and hands to the sky.

x1 goes over the screen and under x5 taking an angle to cut off the ball handler and square the ball up. x1 may also go under the screen if the ball handler is not a threat to make a perimeter jumper.

Pick and Roll Defense- Breakdown Wing
Ball Screen (Soft Hedge)
Frame 5



x1 will square up the ball and x5 will recover.

x5 recovery will be based on communication from other big- he may recover to own man or they may have "x-out" (switch).

x5 sprints with high hands in recovery.