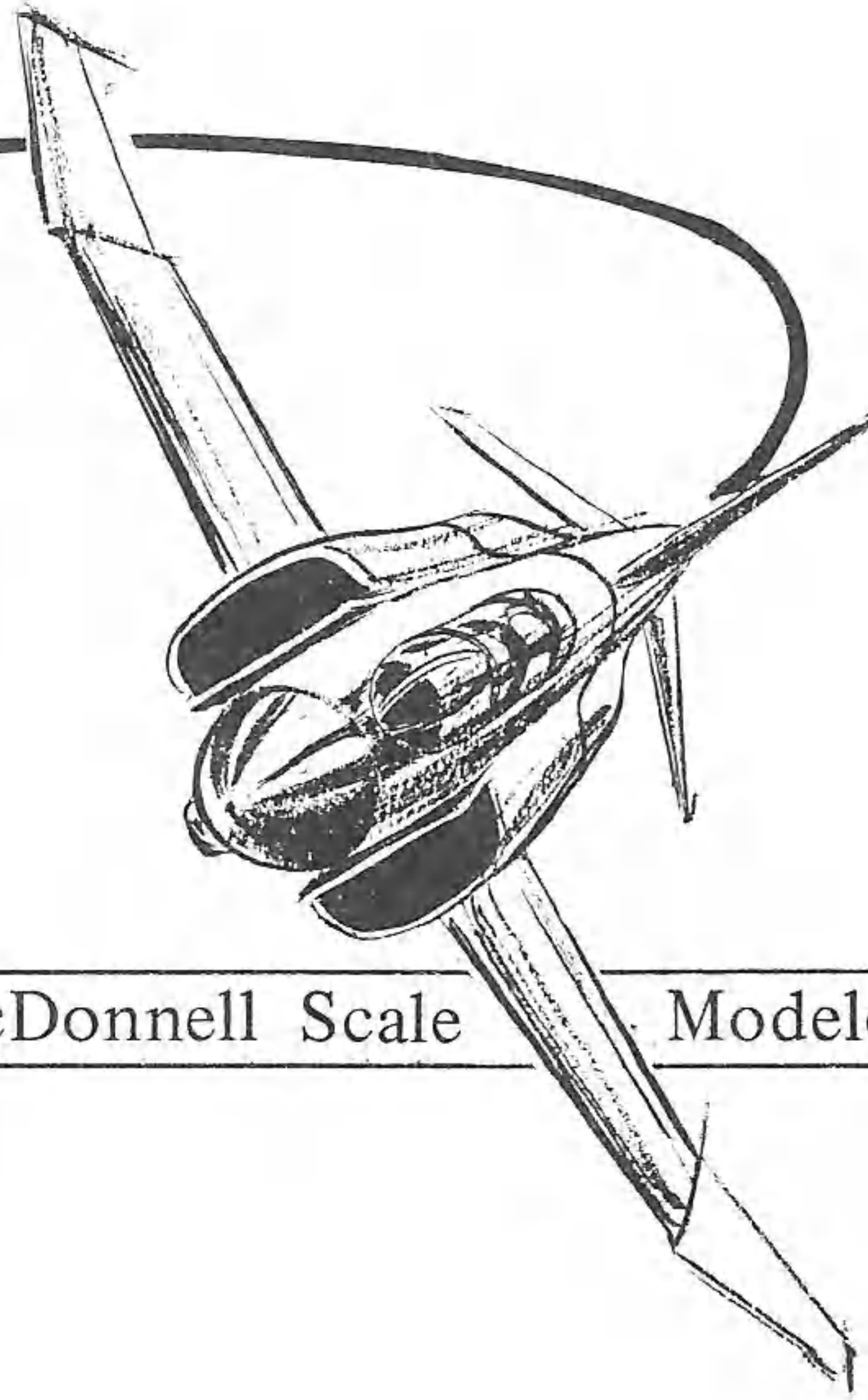


Phantom Flyer



McDonnell Scale

Modelers' Club

1980

Feature Fighters



May 1980

The cover photo to this special photo supplement brings back to mind the halcyon days of the 1950's and '60s when many aircraft covered the flight test ramp here at McDonnell. Rare indeed is the company and time when three different production aircraft are rolling off the lines simultaneously and even more rare is the right moment for the McDonnell photographer to capture a view of F3H's, F101's and F-4's posed for a historic shot.

Page 2 consists of two McDonnell photographs illustrating the company's first aircraft design carved in metal. The XP-67 was indeed an esthetically beautiful machine if not a successful one. We'll never know how good it might have been had normal development and de-bugging taken place. McDonnell photos.

A unique concept and experiment resulted in the XF-85 Goblin shown on Page 3 in port and starboard profile views. Abandoned after flight testing, it is the smallest jet fighter to fly. McDonnell photos.

Page 4 shows the firm's first numerically significant production aircraft, the FH-1 Phantom. It's similarity to the later Banshee is evident but any resemblance to its named offspring is totally lacking. McDonnell photos.

Page 5 Banshee's illustrate the first McDonnell aircraft to be built in multiple versions including fighter, all-weather fighter and recon. McDonnell photo (7) & USMC (8).

Page 6 presents two shots of the slow-starting F3H Demon in squadron markings. These shots are by Harry Gann. It was the natural progression of the missile fighter concept at McDonnell that led from the Demon to the Phantom II.

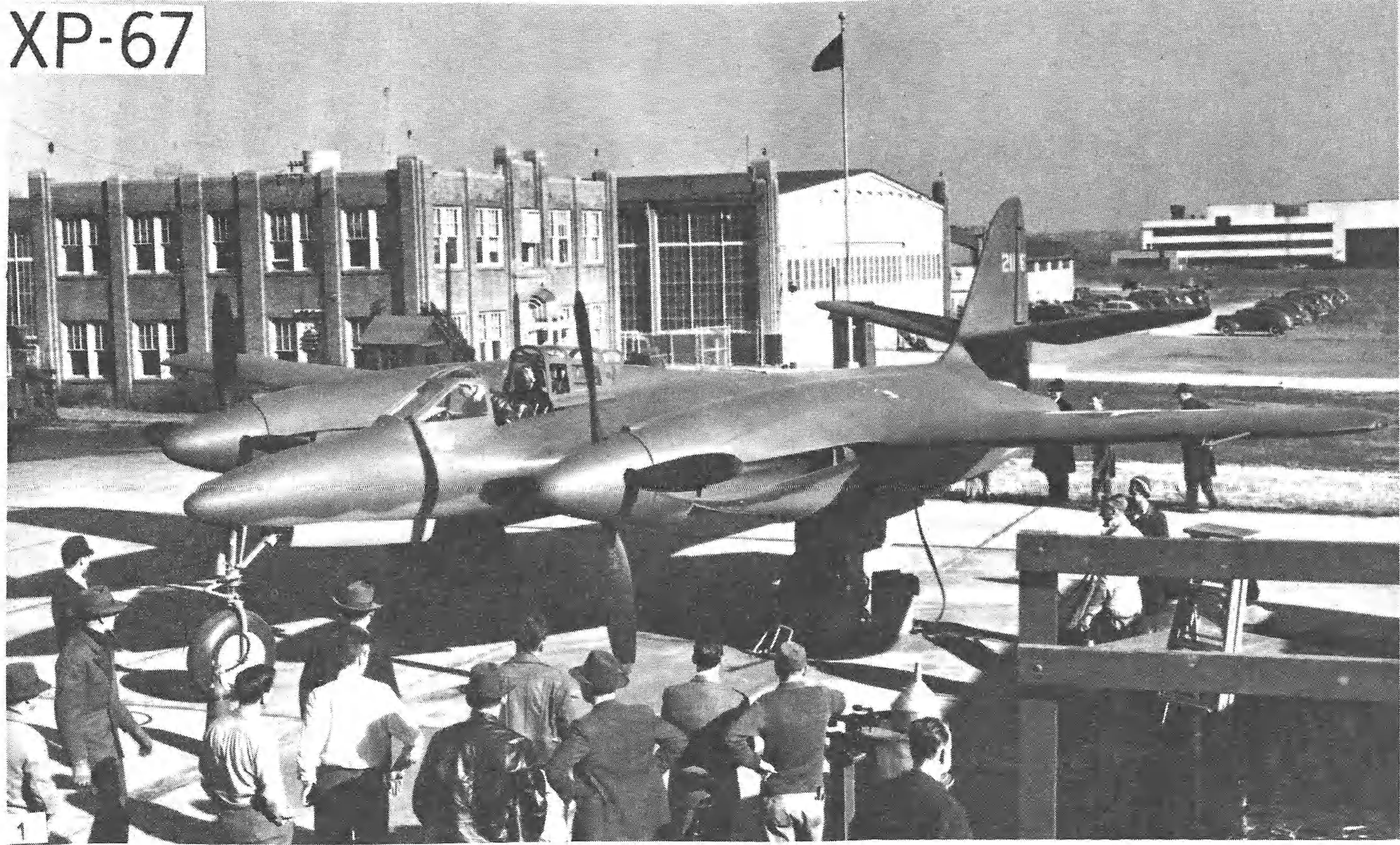
The VOODOO, in any setting, impresses one with its size and power. Conceived as a long range escort for SAC it evolved into an ADC interceptor and found glory as a reconnaissance aircraft in Vietnam. These F101 photos are by McDonnell & Fred Roos.

The F4 Phantom II. There probably exist more photos of the F4 than any other jet aircraft in the world. Rather than elaborate on its multi-national assignments we include only two examples for your enjoyment.

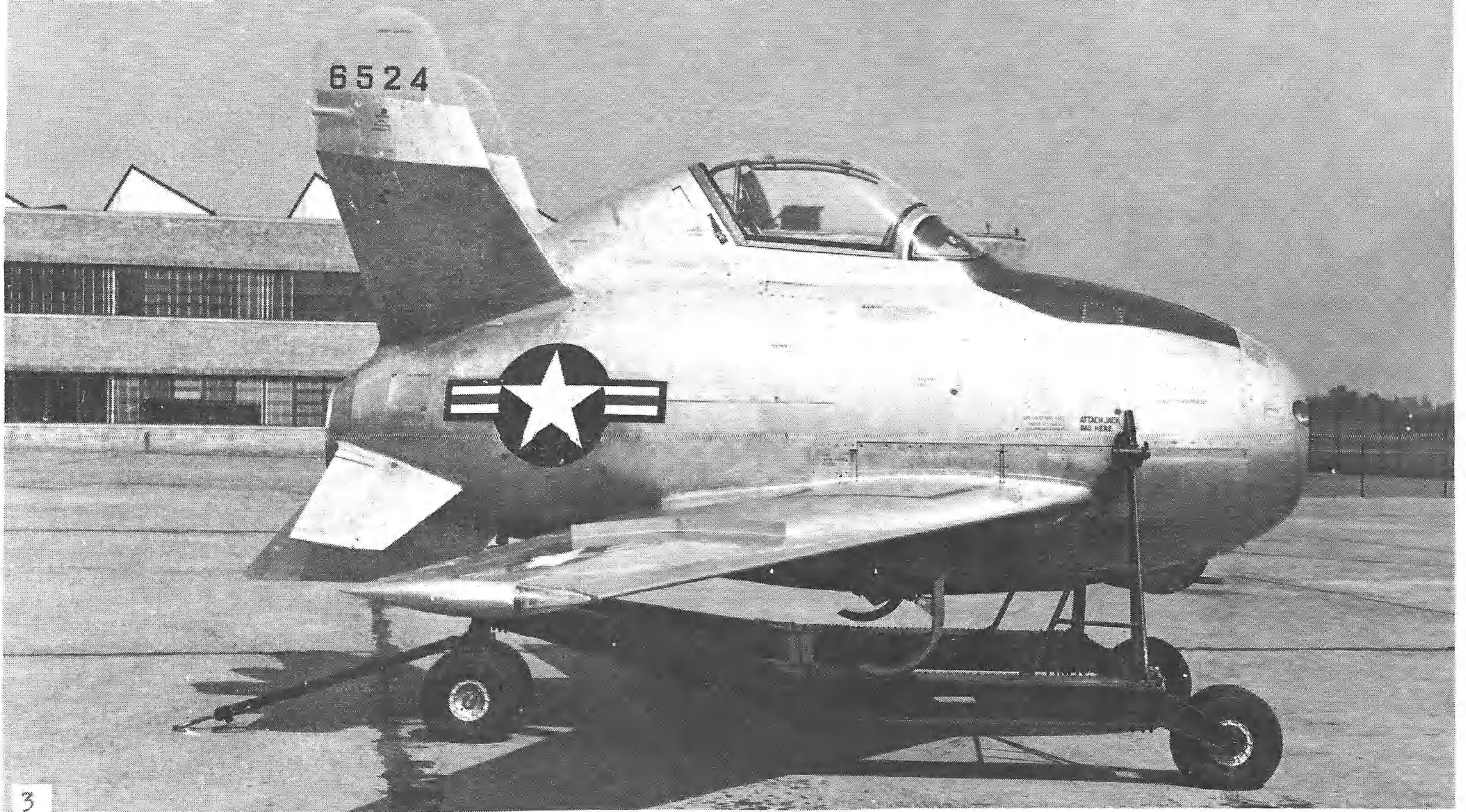
Page 9 provides two interesting views of the F-15 Eagle. The "Sharkmouth" is a test aircraft at Edwards AFB, photographed by Tom Brewer. The other is of a wing assigned F-15A by D. Fisher.

Our last page consists of shots (by McDonnell) of the new F-18A Eagle and AV-8 Harrier, the latest branches on the McDonnell family tree of military aircraft.

XP-67



XF-85



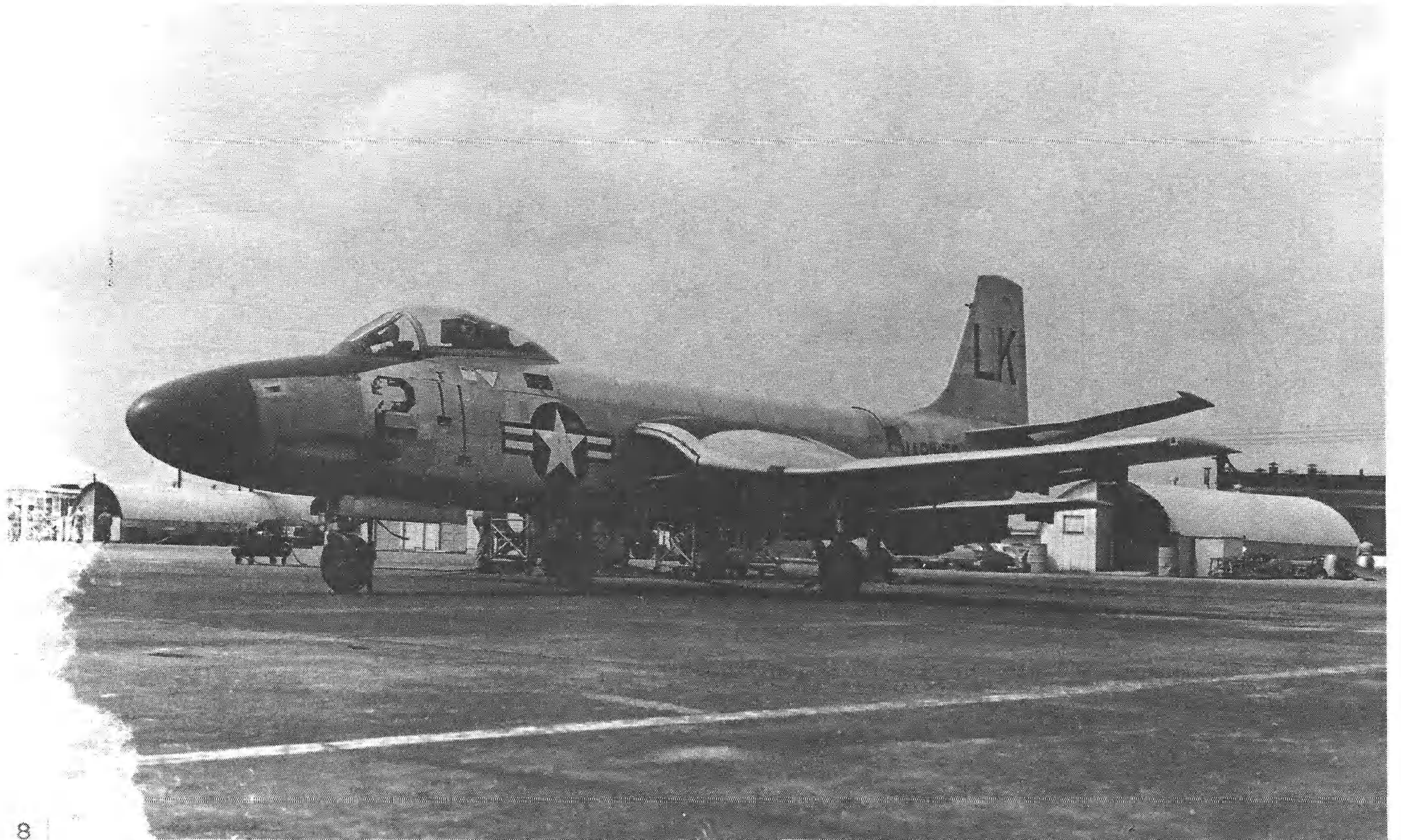
FH-1



F-2H



7

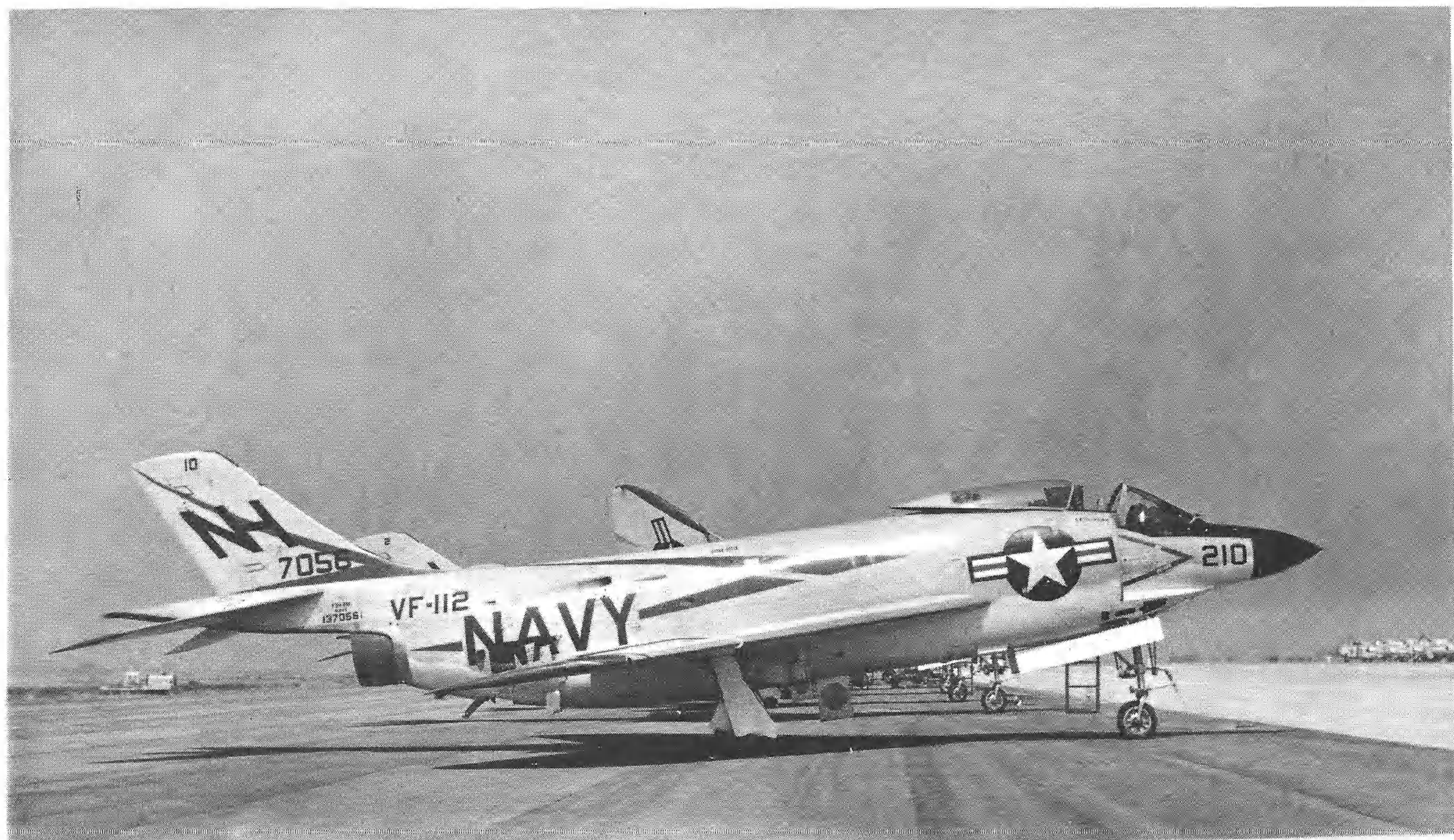


8

F-3H

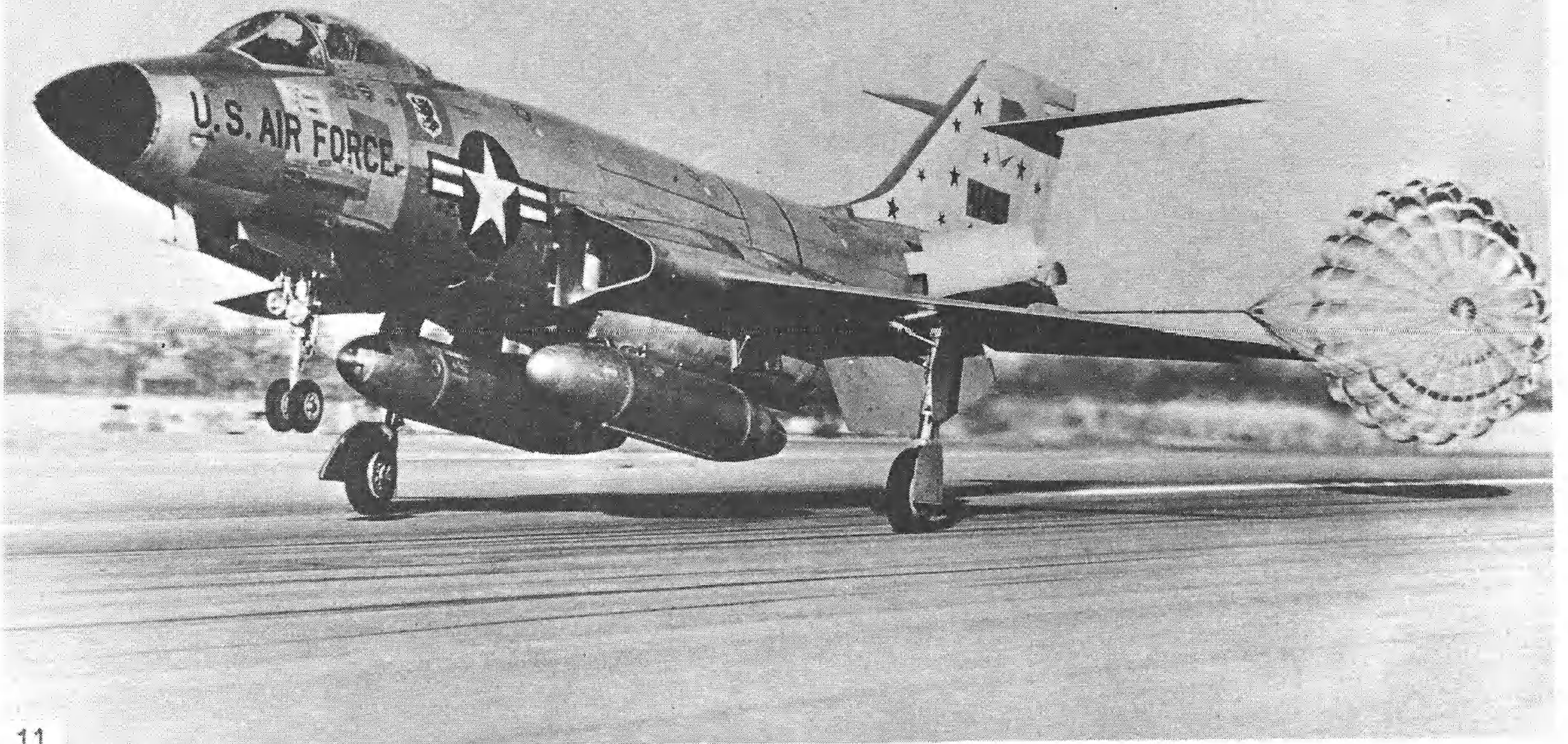


9

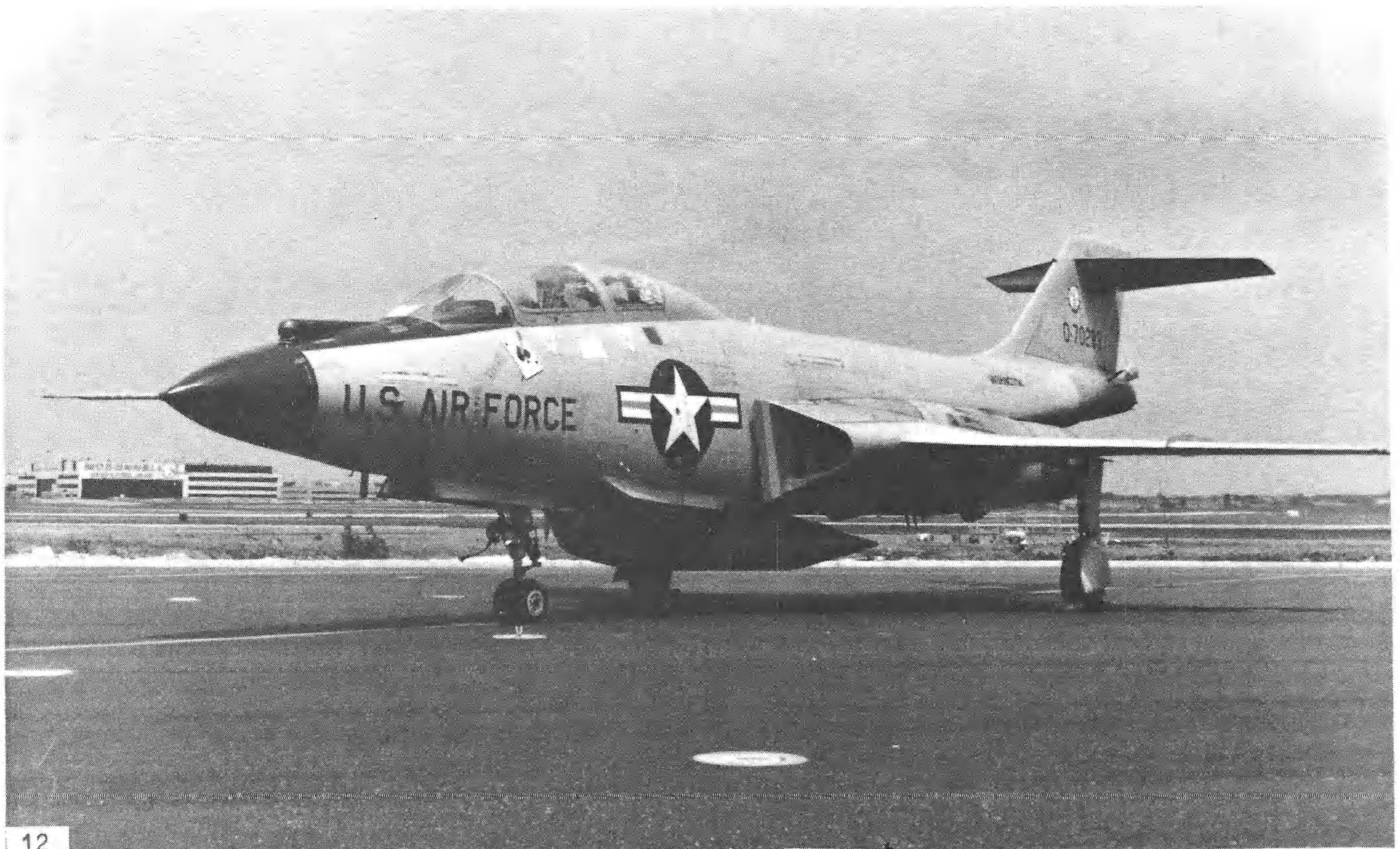


10

F-101



11



12

F-4

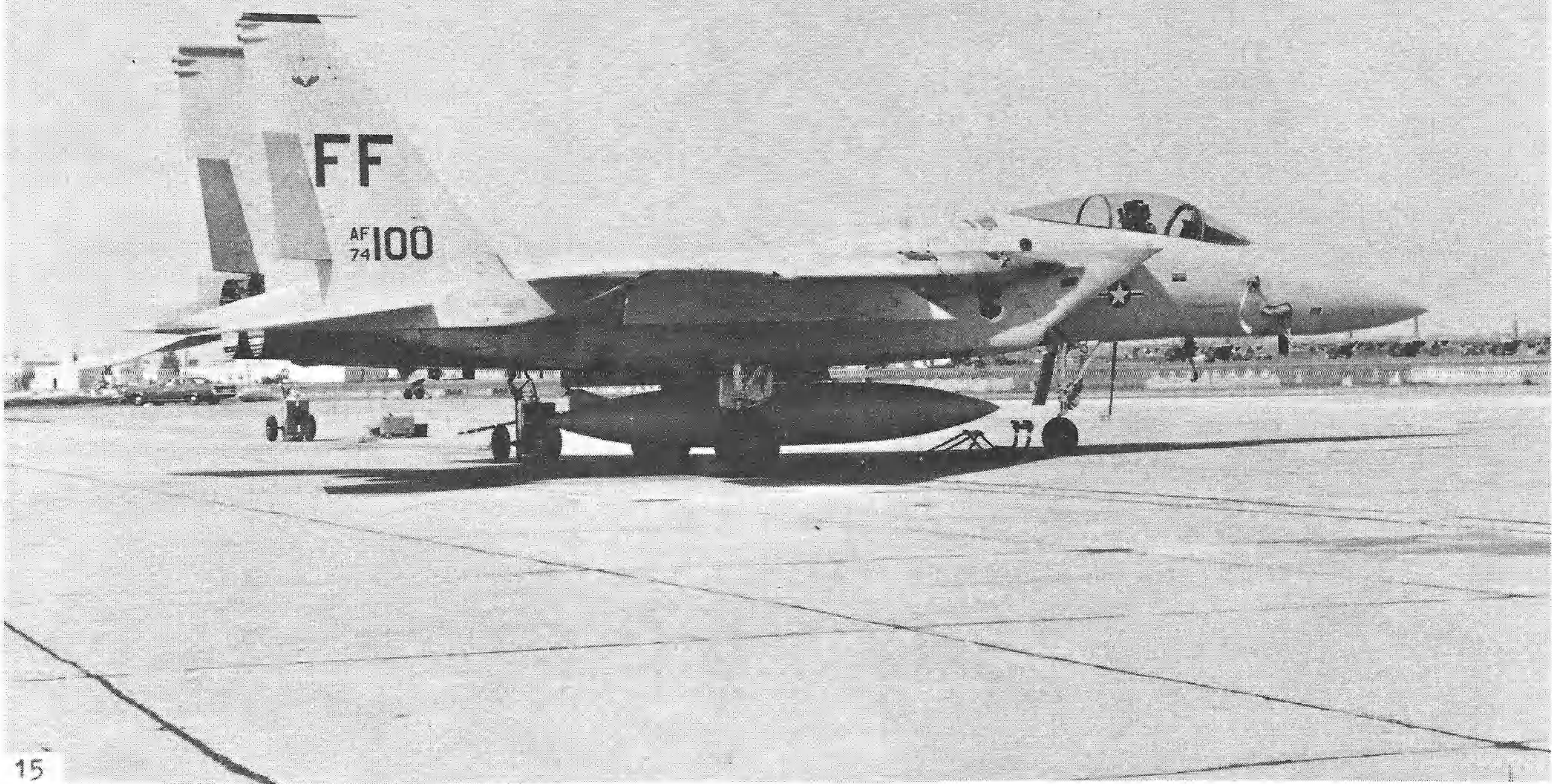


13



14

F-15

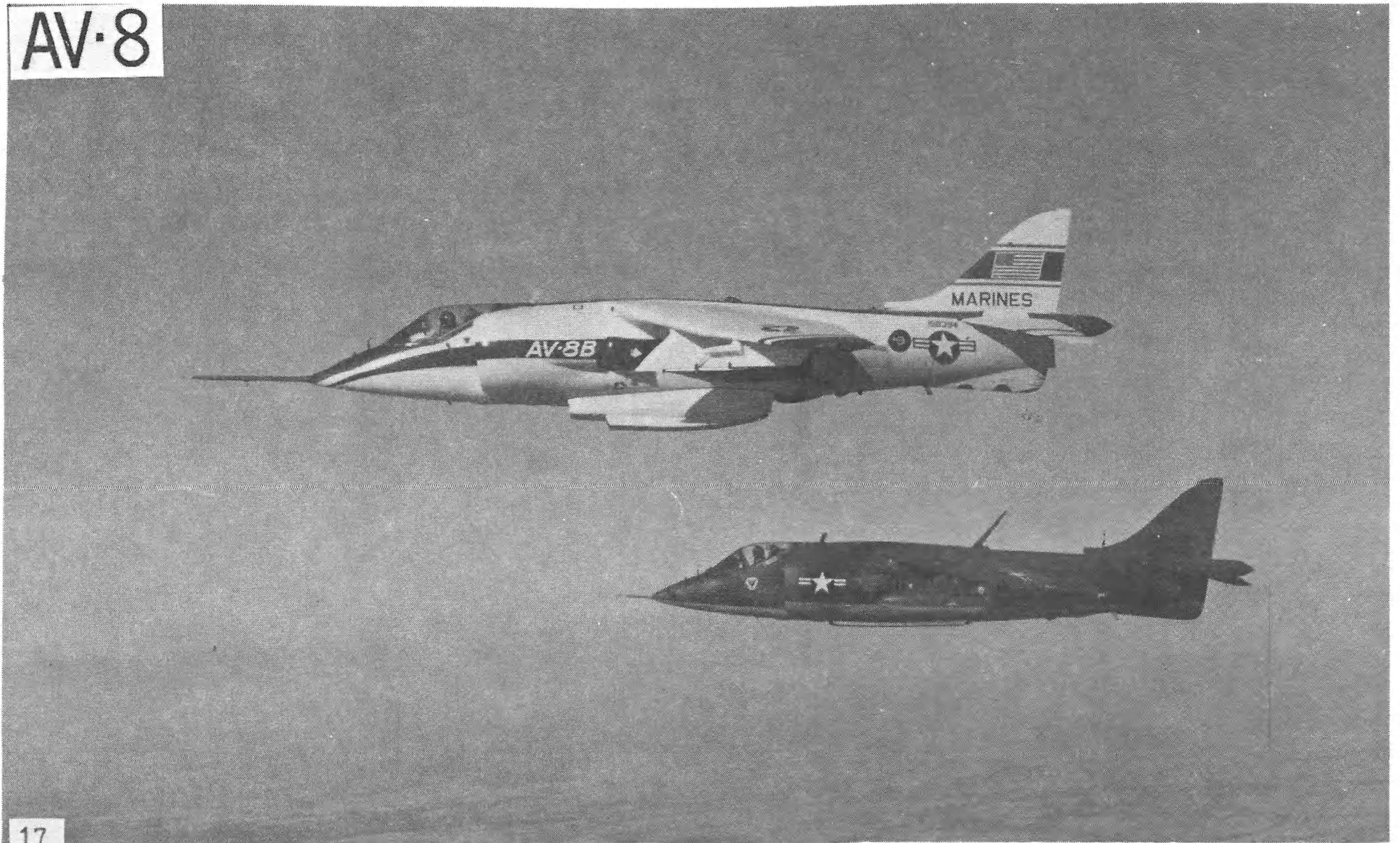


15



16

AV-8



F-18

