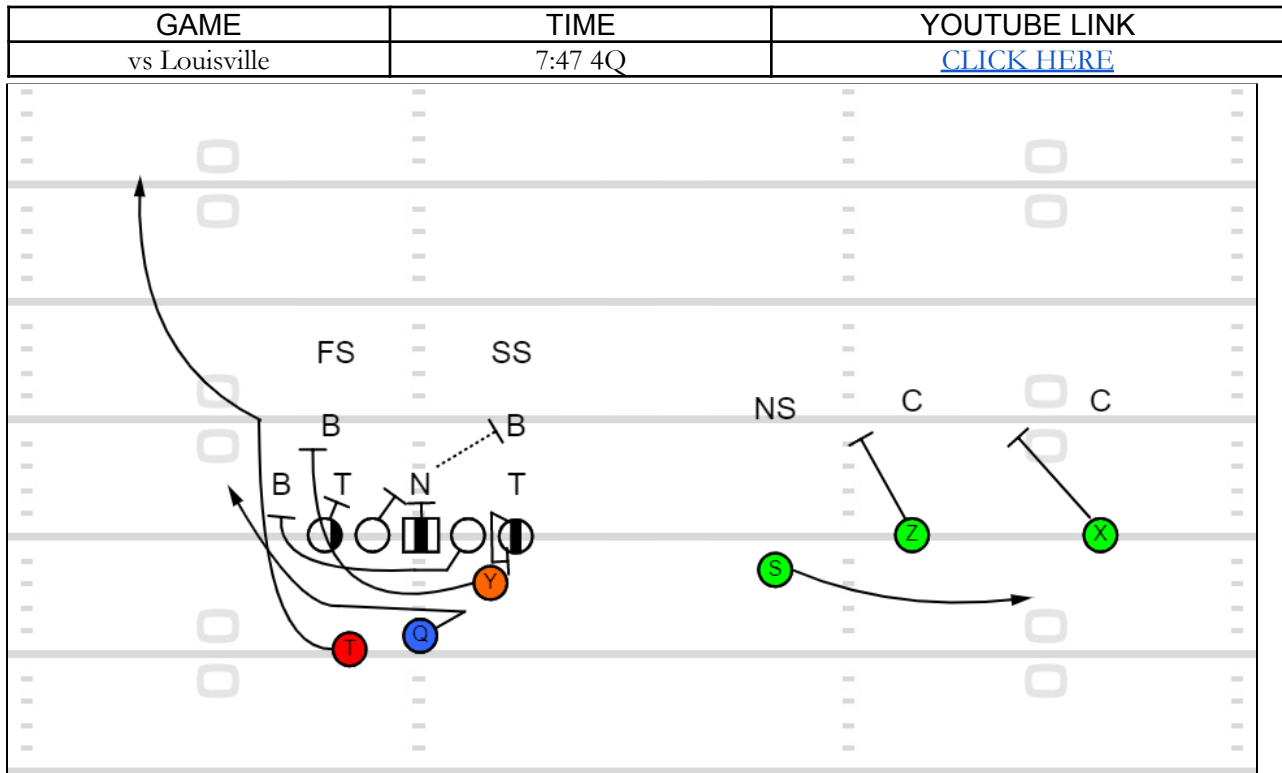


PLAY 6 – QUADS QB G-H COUNTER RB WHEEL

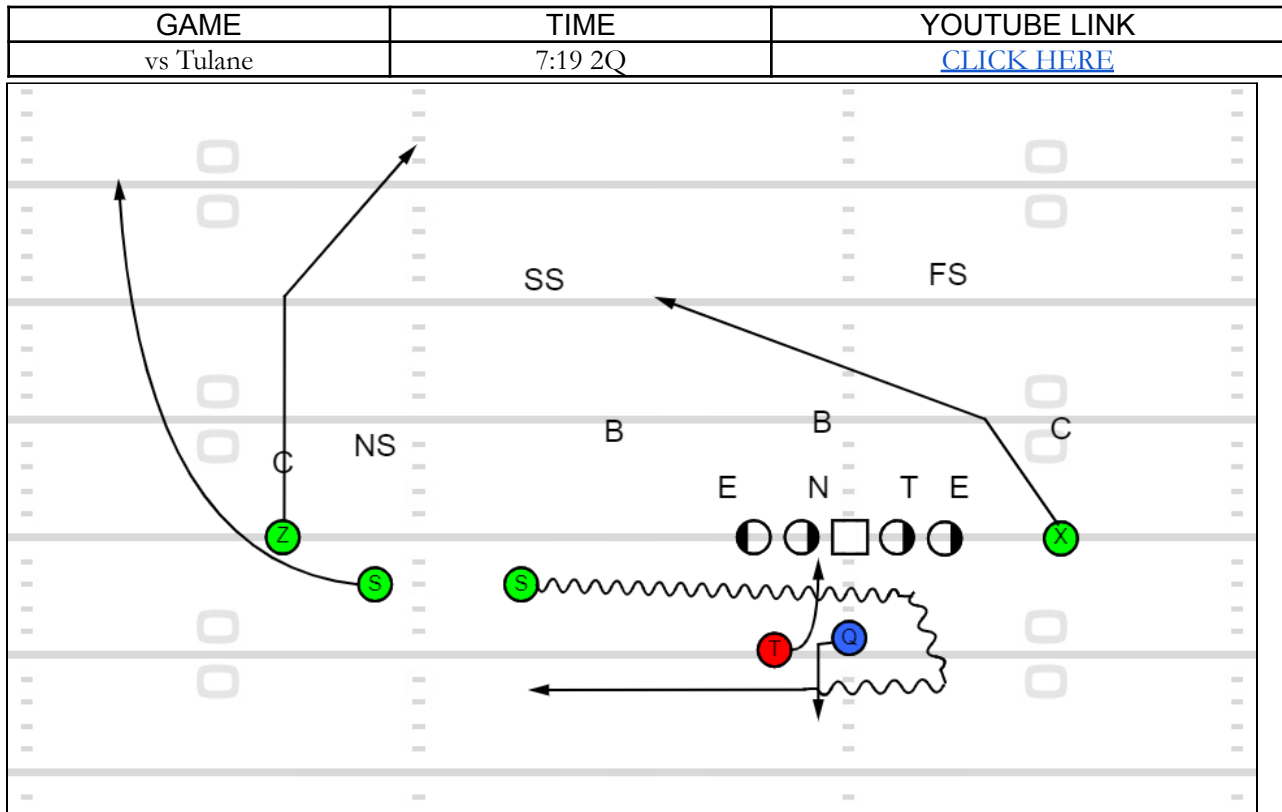


Ole Miss challenges Louisville here in terms of formation, getting into a quads set with the back aligned into the boundary. This is a great look at a well-designed QB counter play for Matt Corral. As the G and H-back pull, the RB takes off on a full-speed wheel route simply designed to pull 2nd and 3rd level players with him.

As they look to execute post-snap, the G logs the edge player, while the H ends up leading up to the 2nd and 3rd level looking for work. The wheel-action of the running back makes this play go, as both the Will LB and FS carry the back vertically. IF the back gets clear and behind the defenders right away, he's going to look for the ball on the throw, but on this play the Louisville defense does the smart thing and stays deep.

Corral does the rest, and picks up an easy 14-yard gain putting Ole Miss in position to put more points on the board.

PLAY 31 – TRIPS ORBIT RETURN MOTION SCREEN AND GO

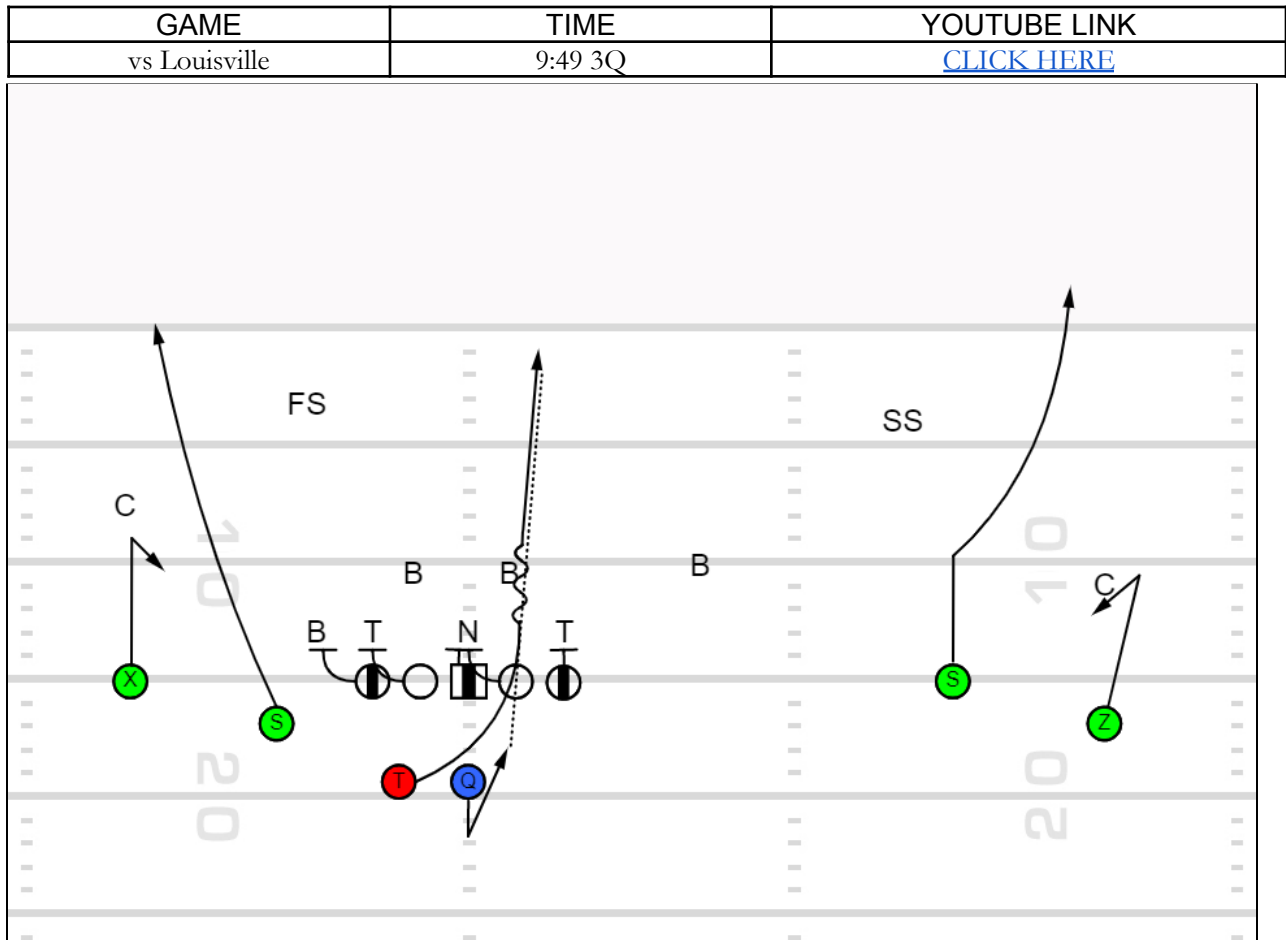


Out of a 3x1 Trips look, Ole Miss hits a shot play here with a nice screen and go design. This play shows up on tape in offenses all across the country, and is a great way to keep defenses honest as Ole Miss throws a large amount of swing screens throughout the season.

Using motion to dress it up, the #3 receiver orbit return motions as they sell the swing screen action to the field. The Z receiver takes off on a post, as the #2 receiver sells stalk block action before releasing up the sideline on a wheel route.

This becomes a true progression read for Corral, as he can move from his deep post route down to to his delayed wheel route, and RB in the flat. Corral has every reason to like his post route here as the Tulane strong safety is downhill towards screen action, and he throws a perfect deep ball in stride to his Z receiver for a score.

PLAY 71 – QB DRAW POP PASS



While this play was called back due to an illegal man downfield, it is a very effective design against the split safety look of the Louisville defense. Ole Miss calls a QB draw out of a 2x2 spread set, and utilizes a mirrored slot fade combination from their 4 wideouts to hold the split-safeties wide. As the RB leads up to LB level, he slips past the Mike LB vertically rather than blocking him, becoming available for a throw.

As Corral takes off to run, it is his job to read the Mike LB and run/throw depending on his movement. The RB is wide open, and he floats it to him for what would be a walk-in touchdown if it wasn't for the penalty. If executed correctly, this RPO scheme is a great way to take advantage of a 2-high safety look.