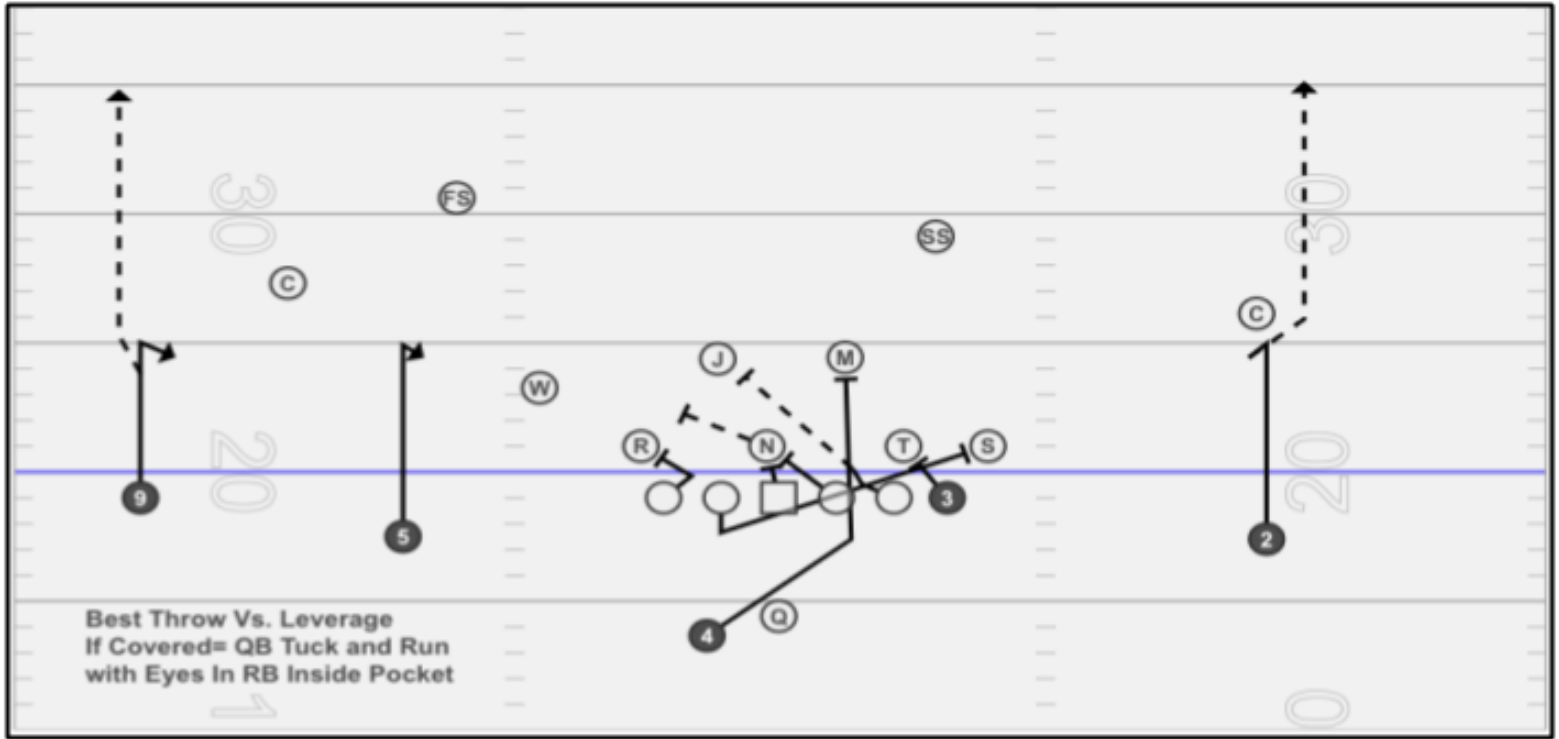


DEUCE *TX* COWBOY



C.P. Easiest Cleanest Throw (DON'T FORCE THE ISSUE)

QB: Easiest Cleanest Throw vs. Leverage (Look for uncovered)
QK Game footwork: If Throw is covered; Tuck and Trail RB.

(Pre-Snap):
WHO IS OPEN?

(Post-Snap):
IF STILL OPEN- THROW
IF COVERED - TUCK AND
RUN

4: Alignment: Steeler Align
Wrap to #1 LB in Box

3: Alignment: In line
Block Down to #2 LB in Box.

5: Alignment: (**Field**) Hash
Hitch (3 Big/ 2 Little)
Sell Fade & Slam the Head gear

2: Alignment: (**Field**) -#'s
Hitch/Fade Read
@5 yds (If even your leaving / If Capped, Snap it)

9: Alignment: (**Boundary**) Bottom of #'s
Hitch/Fade Read
@5 yds (If even your leaving / If Capped, Snap it)

Backside B gap

BST: Pick & Hinge

#1 LB in box

BSG: Square pull; Kick out EMOL

Backside A gap

C: Vs. Even- Down 1st DL Backside
Vs. Odd- "Ace" Combo call w/ PSG
Vs. Bear- Alert! "Down, Down" call

Playside A gap to #2 LB in box

PSG: Vs. Even- "Deuce" call w/ PST
Vs. Odd- "Ace" call w/ Center
Vs. Bear- Alert! "Down, Down" call

Playside B gap to #2 LB in box

PST: Vs. Even - "Deuce" call w/ PST