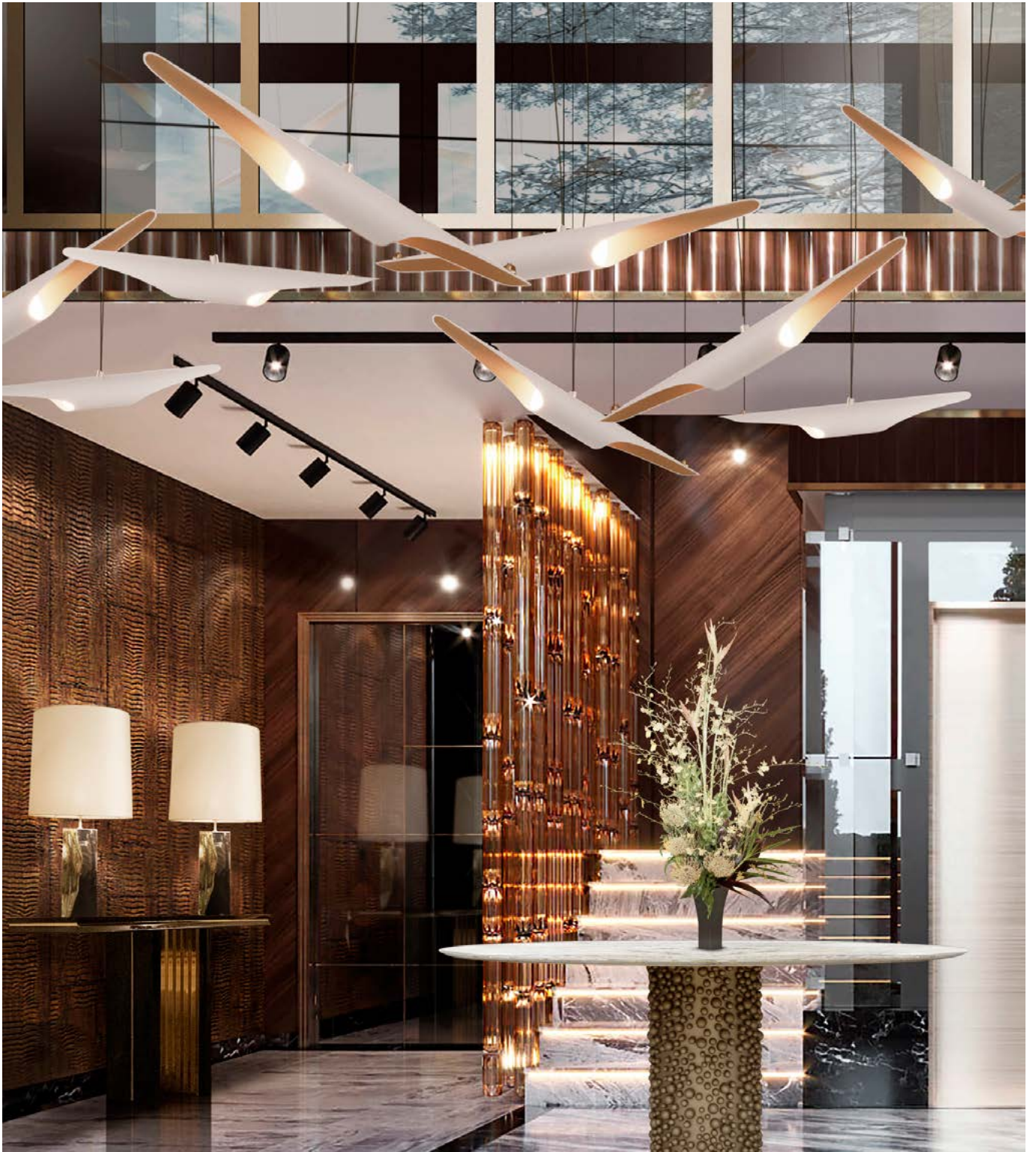


THE ART OF
DESIGN

LUXURY HOME INTERIORS

£4.95 • ISSUE 69



NEW HERITAGE WALLPAPERS /
WHAT TO EXPECT AT THE FLOORING SHOW /
THORP'S MIAMI BEACH MASTERPIECE



For explore more, lets meet at our **London Showroom!**

📍 584 Kings Road, London SW6 2DX

🌐 maxxmora.com 📷 [maxxmoraglobal](https://www.instagram.com/maxxmoraglobal)

Istanbul | London | Hamburg | Cannes

Every Outdoor Moment...



MAXXMORA
Outdoor Living Concept





CONTENTS

20

A FIVE-STAR RETREAT IN THE DESERT SOUTHWEST

Daniel Joseph Chenin crafts a cinematic residence, blending architecture and art, that serves as a family-centered hideaway on the outskirts of Las Vegas, Nevada.

32

TRANSFORMING SPACES: THORP'S MIAMI BEACH MASTERPIECE

Creating a beautiful space that encapsulates the essence of an American family's lifestyle and the breathtaking surroundings of Miami Beach.

44

THE LEAFY SELECTION

Beautiful bold colours and patterns with an added injection of greenery for a biophilic burst of summer.

52

THE FLOORING SHOW 2024

This year's dates are set for 15-17th September, at its much-loved home of the Harrogate Convention Centre.

Editor in Chief

Antony Holter
T: 01304 806039
E: editor@mhmagazine.co.uk

Sales Director

Courtney Yorke
T: 01227 936976
E: courtney@theartofdesignmagazine.com

Business Manager

Josh Holmes
T: 01304 806039
E: josh@mhmagazine.co.uk

Editor

Rebecca Keating
T: 01304 806039
E: rebecca@theartofdesignmagazine.com

Sales Manager

Harrison James
T: 0203 907 9166
E: harrison@mhmagazine.co.uk

Studio Designer

Sarah Johnson
E: sarah.johnson@mhmagazine.co.uk

Publishing Director

Martin Holmes
T: 01304 806039
E: martin@mhmagazine.co.uk

Digital Manager

Jamie Bullock
T: 01227 936971
E: jamie@mhmagazine.co.uk

Accounts Department

Alison Holmes
T: 01304 806039
E: accounts@mhmediaglobal.com



Cover Image Courtesy of:
Covet Collection - www.covetcollection.eu



The Art of Design
is proud partners with

MH Media Global Ltd, 18/20 Newington Road, Ramsgate, Kent CT12 6EE

Every effort is made to ensure the accuracy and reliability of material published in The Art Of Design however, the publishers accept no responsibility for the claims or opinions made by advertisers, manufacturers or contributors. No part of this publication may be reproduced or transmitted in any form or by any means, mechanical, electronic (including photocopying) or stored in any information retrieval system without the prior consent of the publisher.

A SUBURBAN VILLA PARADISE IN CALABASAS **A SHOWCASE OF LUXURY IN A NATURAL EMBRACE!**

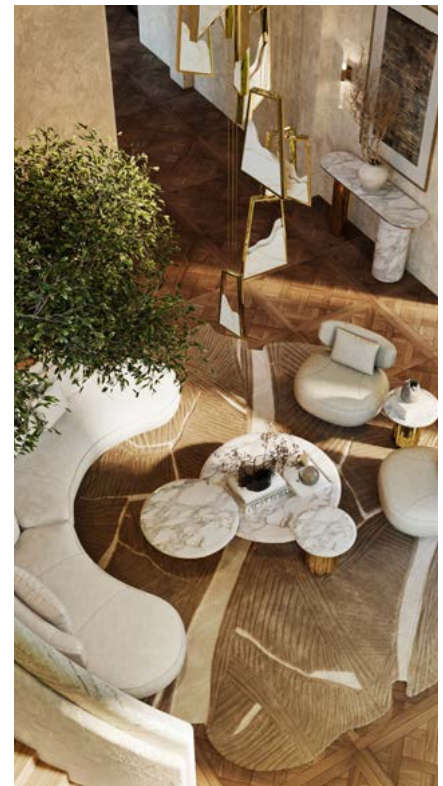
LUX XU has chosen Calabasas as the destination of its next luxury house.



pieces, complementing them with numerous high-end designs from other luxury brands.

AN ENTRYWAY WITH EXCLUSIVE DECOR STATEMENTS

The entryway presents unique features like arched doors and a stucco staircase that blend perfectly with the neutral glamour scheme. The Magna chandelier suspends over the ceiling, creating a poetic statement, and the Talie round sofa in Monet Pearl fabric introduces a mid-century feel with their curved silhouette.



This new project portrays the picturesque and suburban lifestyle of the region, going beyond expectations to showcase how luxury and nature can become one. The villa is well-appointed with a stunning landscape garden,

and it matches Calabasas' adobe architecture highlights, seamlessly blending with the mesmerizing mountain scenery. In this suburban paradise, the modern design and living brand displays some of its most emblematic



NATURAL LUXURY TRIUMPHS THE DINING ROOM

From wooden flooring to biophilic design, the ample dining explores natural luxury to its finest. The majestic high ceilings give room for creativity, and LUX XU puts the spotlight on the sublime Liberty Slim Snooker suspension. The Talie dining chairs and the Algerone Rectangular dining table make for a premium combination. Then, the Liberty Torch wall lamps and the Vertigo mirror set shine through their meticulous details. The Lapiaz sideboard and the Pixel bar cabinet by Boca do Lobo conclude the aesthetic, promoting contemporary design with an avant-garde feel.



SHOWCASING A DETAILED LIVING ROOM

The modern interior architecture conveys a sleek, sculptural, and artistic aura, leaving room for versatile decor. This room highlights a perfect mix of modern and contemporary details with exclusive pieces like the Senzu sofa and the Algerone II bar chairs by LUX XU or the Imperfectio armchairs and the Navarra center table by Boca do Lobo. In addition, the tray ceiling holds the magnificent Liberty Slim suspension that provides a soothing lighting effect through crystal glass bars.





ENTERTAINMENT REDEFINED

The entertainment room features various leisure spots. Throughout the room, one can see numerous custom-made pieces, including the Algerone Snooker and Poker tables. Overhead lighting is a must in these types of divisions, and here, the Waterfall suspensions become the centerpieces with their gold-plated brass details and delicate crystal glass tubes that cast a soothing glow. In the lounge, comfort is also of the essence with designs like the Algerone angular sofa or the Galea armchair.

A ROYAL MASTER SUITE

The master suite accentuates hotel-like amenities with a touch of nature, from undulating wooden walls to a stucco frame. LUXXU's Charla collection decorates the sleeping area with the Charla XL bed stealing the show with its massive beige upholstered headboard, matching the sleekness of the Waterfall small pendants. In the vanity corner, one can spot the iconic lines of the Charla dressing table with a custom twist and the Algerone stool.



In the ultra-modern bathroom, the Darian bathtub and cabinet by Maison Valentina add an imperial flair with marble, brass, and leather accents. The Shield mirror introduces an architectural character, and the Waterfall II big wall lamp by LUXXU builds on the drama and interest.

The generous walk-in closet with a mirrored ceiling features elegant solutions like the modular Waltz closet in cream tones. Furthermore, the Otto sofa and XL armchairs bring form and aesthetics together. These upholstery pieces styled in mid-century present an organic shape made of velvet and leather. Lastly, the Algerone center table adds timelessness and refined sophistication.



PLAYFUL ACCENTS THROUGHOUT THE KID'S BEDROOM

For the child's bedroom, LUX XU opted to showcase a custom-made Charla XL twin bed with whimsical details, adding a mint headboard and playful accents to the bottom of the beds. At the center, the Needle table lamp adds a layer of luxury, complemented by the suitcase-shaped Fantasy Air nightstand by CIRCU. The latter also lent several fun objects from its collection, including the Bubble Gum bench and gym, the Elephant stool, the Bunny floor mirror in green tones, and the Cloud suspension lamps. Finally, LUX XU added a custom-made Talie sofa with a more high-spirited structure.



RELAXING IN A WARM OUTDOOR SPACE

The outdoor area boosts the relaxed and sophisticated nature of the location, enhanced by distinguished outdoor furniture from MYSA. Designs like the Hampton Wood upholstery or the Algerone outdoor tables epitomize class and style through a layered form. In addition, awe-inspiring lighting pieces like the Magna floor lamps and the Spear I outdoor wall lamp introduce a contemporary dynamic perfect for the contextual environment.



MEET THE MASTERS IN THE ART OF **DESIGNING FOR SLEEP**

Curio Collection by Hilton is a global portfolio of remarkable hotels hand-picked to immerse guests in one-of-a-kind moments in the world's most sought-after destinations.

Each hotel in the Curio Collection evokes a bespoke story through distinctive architecture and design, world-class food and beverage and curated experiences.

Lindian Village Beach Resort Rhodes is a breath-taking addition to the growing Greek portfolio of Curio Collection by Hilton hotels. Set on a private beach overlooking the glistening Aegean Sea, this is the perfect secluded destination for curious travellers looking to relax, unwind and enjoy the best of what the Greek island has to offer.

Mr Anestis Daneos Michaloudis, General Manager, Lindian Village Beach Resort Rhodes said, "At Lindian Village, our philosophy revolves around providing an exceptional and holistic guest experience, where comfort and luxury are paramount. We have chosen to invest in premium Hypnos mattresses because we believe that a restful and rejuvenating night's sleep is the cornerstone of a memorable stay. Hypnos is renowned for its dedication to quality, craftsmanship, and sustainability, mirroring our commitment to excellence. By offering our guests the unparalleled comfort and support of Hypnos mattresses, we ensure they wake up refreshed and revitalized, ready to enjoy the serene beauty and hospitality of Lindian Village. This investment not only enhances our brand's value but also elevates the overall prestige of our resort, reaffirming our dedication to the highest standards of guest satisfaction."



The 188 spacious rooms and suites have an inviting minimal 'boho' design, exuding refined elegance. Earthy tones and natural textures create a harmonious flow between the stunning surrounding nature with views of the Aegean Sea, and the relaxed indoor atmosphere.

David Baldry, Group Managing Director at Hypnos said, "Sleep is integral to achieving a positive guest experience, and we work closely with hospitality brands all over the world to ensure their guests have the ultimate nights'

sleep. As a luxury British bedmaker, Hypnos has been handcrafting mattresses and beds for over 120 years, perfecting the art of sleep for the wellbeing of people and the planet.

For us, comfort and sustainability are intrinsically linked, having invested in trusted international licensees and supply chain networks to reduce our environmental impact and meet the global demand for Hypnos beds both effectively and sustainably."



www.hypnoscontractbeds.com



BY APPOINTMENT TO
HER MAJESTY THE QUEEN
BEDDING AND UPHOLSTERY
MANUFACTURERS
HYPNOS LIMITED ENGLAND

HYPNOS®


THE MOST COMFORTABLE BEDS IN THE WORLD



THE ART OF DESIGNING FOR SLEEP

— FOR 120 YEARS —

Carbon Neutral, 100% Sustainable and Recyclable

+44 (0) 1332 497111 | info@hypnoscontractbeds.com | hypnoscontractbeds.com |  @hotelhypnos

CELEBRATING CRAFTSMANSHIP IN THEIR LATEST RUG COLLECTION, **MARK KREBS - THE TILE, BOUCLÉ, AND STITCH COLLECTIONS**



Mark Krebs, a design studio with a focus on quality craftsmanship, announces the launch of their latest rug collections.

Handcrafted in Northern India, each rug is designed with the specific understanding of the looms and the skilled weavers of the region. Mark Krebs invites industry professionals and enthusiasts alike to explore their Tile, Bouclé, and Stitch Rug collections.



TILE COLLECTION

Welcome to the Tile Collection, where each rug showcases meticulous craftsmanship. Focusing on quality, the flat weave pile and 'double back' construction ensures durability and longevity, while the use of a monochromatic dip-dyed yarn adds rich colour depth to any room. With a delicate tile pattern carved into the weave, shadows create dimension, adding subtle variations of hue that change with the light of the day.



TILE COLLECTION

Colors:

- Sumac
- Fossil

Sizes:

- 2'3"x13' (69cm x 396cm)
- 6'x9' (183cm x 274cm)
- 8'x10' (244cm x 305cm)
- 9'x12' (274cm x 365cm)
- Custom sizing available

BOUCLÉ COLLECTION

Step onto the Bouclé rug, where the quiet mastery of yarn spinning is at its finest. Inspired by a deep appreciation for the hand feels and spinning quality of bouclé yarn by a specific Indian producer, Mark Krebs designed this collection to highlight its exceptional quality. Through a simple extra thick weaving technique, these rugs are the cosiest in the collection and offer a soft, durable, and chunky grace.



BOUCLÉ COLLECTION

Colors:

- Silver
- Gold

Sizes:

- 2'6"x4'6" (76cm x 137cm)
- 2'6"x13' (76cm x 396cm)
- 6'x9' (183cm x 274cm)
- 8'x10' (244cm x 305cm)
- 9'x12' (274cm x 365cm)
- Custom sizing available

STITCH RUG COLLECTION

Rediscover the Stitch Rug, inspired from old kilim rugs from various nomadic tribes throughout Persia and northern Africa, where looms needed to be compact enough to travel on horseback. Weavers then stitched multiple smaller strips together to form larger rugs. Recognizing the efficiency of a single weaver operating at the width of their body, this style of rug production has been revisited. Embracing the imperfections of handmade craftsmanship, Mark welcomes slight variations in strip lengths, adding a bit of improvised character to every rug.



STITCH RUG

Colors:

- Chalk
- Pebble

Sizes:

- 2'6"x9' (76cm x 274cm)
- 6'x9' (183cm x 274cm)
- 8'x10' (244cm x 305cm)
- 9'x12' (274cm x 365cm)
- Custom sizing available



AWARD WINNING INTERIOR DESIGN SPECIALISTS

Meet Joanne Mills, the visionary Director behind J.M.M. Design, based in the heart of Sevenoaks town.

At their core, J.M.M design are a boutique, family run Interior Design Company dedicated to delivering nothing short of excellence. With a focus on private clients and developers they offer an exclusive design service tailored to individual needs. Joanne herself has actually been in the industry for over 25 years and has developed a pretty unique team of individuals that work closely alongside her, developing the outstanding company portfolio of work, winning numerous awards along the way.

The extensive portfolio speaks volumes, showcasing the culmination of passion and expertise that the current team bring to every project, from captivating residences across the uk and Europe to serving the esteemed clientele in the Middle East.

J.M.M Design takes pride in transforming spaces into extraordinary realms of beauty and functionality! This multi award winning studio works all throughout London and the South East, offering highly personalised, bespoke services, placing great importance and commitment to building strong client relationships. They tailor their process to meet each client's needs, delivering a full interior architecture, furniture

design and turn-key styling service, from concept through to completion. You can find out more by visiting - www.jmmdesign.co.uk.

Note from Joanne, "Make your home a reflection of you and your everyday needs, Let the space be warm and welcoming, adding practicality and functionality that blends with you personally and your family in mind."



www.jmmdesign.co.uk



One of the UK's leading Interior Design houses

RECOGNISED IN THE WORLD'S TOP 30

Full Cad Design | Kitchen Design | Bathroom Design | Full Refurbishments
Building | Loft Conversions | Extensions | Full Turn Key Services | Property Staging
Show Homes | Interior Architecture | FF & E Design

UPPER EAST SIDE, NEW YORK APARTMENT **FROM STUDIO SHEPEL**

Type: Private residence
Area: 350 sqm

Studio Shepel reimagined this New York family home, with more than a century of historical and cultural heritage, to accommodate the life of its new owners - a sophisticated couple and creative duo of an international fashion brand.

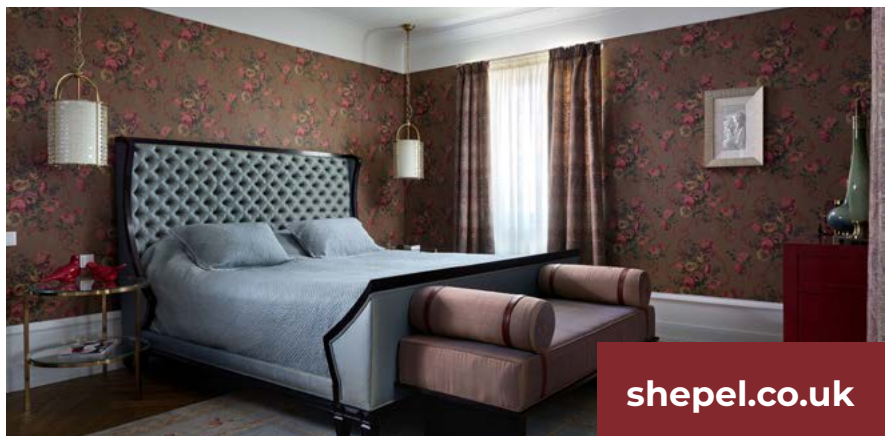
The design of this house was all about natural light paired with classic 1920s architecture. Studio Shepel worked within their go-to neutral palette balanced with textural details, patina and finishes such as plaster paint, antique mirror and marble. The home also features unexpected moments, like the bold wallcoverings in the bedrooms, particularly full of personality for their youngest children.

About Studio Shepel:

Studio Shepel is a global interior design studio that specialises in curating luxury homes and commercial spaces. An umbrella brand of SHEPEL', the design studio works for a global client base.

SHEPEL' is a family-owned and operated company, founded by interior design duo, Alexander and Helen Shepel. Over the last two decades, the couple has transformed their passion for exquisite interiors into a group of esteemed international brands, headquartered in London.

Today, their team of craftspeople - which has been carefully curated and nurtured over the years - is united by a shared commitment to design excellence. Collectively, they bring Alexander and Helen's visions to life, transforming raw materials into pieces of beautiful, functional art.



shepel.co.uk

*Long Eaton is renowned the world over
as the home of fine upholstery*





BOW, THE MODERN CRAFTMANSHIP OF TONELLI DESIGN **INTERPRETED BY MASSIMO CASTAGNA**



This table of Tonelli Design signed by Massimo Castagna features elegant and contemporary lines of the tops that merge with the geometric volume of the base in fused glass, creating a perfect and original balance of shapes. The contrast of the top and base finishes generates an authentic and

harmonic textural encounter. The attentive care for the connecting metallic elements of the base make them unique and refined details. A process of fusion at high temperature creates a material that shares the dialogue between craftsmanship and modern research. T-Squares and T-Stripes are

profoundly embossed textures of the glass slabs, that take on a dense and sinuous visual appearance.

www.tonellidesign.it



your home
my furniture

living · dining · bedroom · lighting · accessories · my-furniture.com

affordable exclusive british design



Daniel Joseph Chenin crafts a cinematic residence, blending architecture and art, that serves as a family-centered hideaway on the outskirts of Las Vegas, Nevada.

FAMILY CONNECTIONS: A FIVE-STAR RETREAT IN THE DESERT SOUTHWEST

When a prominent couple decided to leave their Hidden Hills home in Southern California to plant roots in Las Vegas, their focus was on family connections. Seeking a space where their large family, including several children and grandchildren, could be comfortably housed all at once, they commissioned Daniel Joseph Chenin for their integrated design approach inclusive of the architecture, interior design, exterior environments, furnishings, and accessories. The 20,000-sf build is evocative of a boutique hotel with an eclectic mix of furnishings and art that serves as a family-centered hideaway on the outskirts of Las Vegas, Nevada.



“We realized right away that we were discussing a multi-year project, and that made our relationship with the client essential from the outset,” says Daniel Joseph Chenin, lead architect and founder of the firm bearing his name. “As a firm, rather than advocating for a set style or aesthetic, we apply our collective expertise to the fulfillment of each client’s vision.”

Personal connections

That process began over lunch in 2018 when Chenin was introduced to the clients. Having commissioned multiple custom residences in California and Hawaii, the conversation touched on their aspirations for this home, which was to be their new primary residence. The couple’s vision intersected a niche that Chenin’s firm has increasingly addressed in recent years, where coastal clients are looking inland to the open and picturesque landscapes of the desert Southwest.

“Having commissioned designs for prior residences, we learned that chemistry and trust are the foundations upon which a project’s success is built,” explains the Client. “We researched and met with other architects and designers, but there was an immediate ease and connection with Daniel that allowed us to quickly establish a level of trust and to relinquish control for him to design something beyond what we could have conceived.”

Arriving at a pivotal point in their active lives, the clients wanted a house that could function as a fully-accommodating gathering space for the entire clan during holidays and seasonal visits, but which would also provide them with a retreat for themselves. That objective tapped into a cross-section of Daniel Joseph Chenin’s expertise, which applies his experience with notable project deliveries for five-star luxury brands including Four Seasons and Auberge Resorts to the design of unique, exclusive, and experiential signature residences.



“The concept struck a chord as being something that would exude the character of a five-star boutique hotel, but that would also be comfortable and liveable on a residential scale,” says Chenin. “They were seeking a harmonious balance of social engagement and blissful seclusion that could unfold simultaneously in a warm and well-appointed home.”

Landscape integration

Working from the outside in, the first challenge the firm addressed was space planning for the totality of the complex, ensuring maximum efficiency within the confines of the purchased land. The long, narrow lot borders an adjacent hill, and the decision was made to excavate in order to nestle the rear limits of the property into a cut in the hillside. As the property weaves its way down to the main level of the residence, the firm

incorporated elements of the excavated landscape back into its design, including a retaining wall, pillars, and a driveway comprised of stone, all transitioning towards a more distinct residential theme.

Upon arrival at the home, a long driveway declines towards a motor port that can accommodate multiple vehicles, complete with EV charging stations. Adjacent to the motor port, a large lantern serves as a beacon to identify the entrance to the home, while beginning the process of compressing the surroundings to a human scale. A landscaped path leads to a set of massive ornamental bronze doors, emblazoned with a pattern of rings radiating outward from the central handles. Beyond the doors, an inner courtyard flanked by fountains leads to a large black portal that shrouds the main entrance to the home.





A room with a view

Atop the entry portal, Chenin essentially created a glass box, referred to as the ‘crown’, to house a large entertainment lounge with a full-service bar, as well as a gym and spa along the periphery. The deep-set, tinted windows of the ribbed black structure were designed to block the harsh summer sunlight, while allowing temperate winter rays in for a peaceful coexistence with the desert climate.

Outside of the box, so to speak, the structure is flanked by landscaped decks that continue the curated gathering spaces outdoors, with views extending across the canyon towards the distant Las Vegas strip to the East, and raw, untouched

desert vistas to the West. The formal layout includes a myriad of terraced outdoor dining and entertainment spaces, with a short descent to a bacchii ball court and a pool area, where fire pits and sofa seating provide several structured, yet casual, settings to experience the landscape and view.

A timeless concept

The clients expressed their interest in an H-shaped layout for the interior of the house, allowing for opposing wings to provide a personal retreat on one side, and guest accommodations with a variety of configurational options on the other. The H-shape design also addresses an environmental option that allows for an entire side of the house to be shut

down from a mechanical standpoint when the couple is home alone.

“We were captivated by the very first design presentation,” says the Client. “The level of detail and the way the design renderings, sketches, and mood boards captured the quality of the proposed spaces was beyond anything that we had seen before.”

The clients also expressed their desire for the house to feature their large private collection of Hudson River School paintings, which marked a turning point in the conceptualization process of Daniel Joseph Chenin. From a theoretical standpoint, Chenin embraced the idea of curating the clients’ art collection as a core element of the design. Drawing inspiration from the art, whose beautiful frames contain the life within the paintings, the firm embarked on an architectural approach to create portals that frame the life within the spaces, capturing the shared experiences and memories created in the home.

“That was the impetus of how we started laying out the house, as a collection of portals, with each transporting one into a different container, or room, with a distinct function,” explains Chenin. “We codenamed the project Palladio, after Italian architect Andrea Palladio, who was famous for his 16th century villas that utilized cruciform circulation with a strong emphasis on symmetry, proportion, and balance.”





Guided by the concept 'discovery of the nuance', the spatial organization breaks down the scale of the home to create livable environments. Each container serves as a beautiful backdrop to life's daily activities as they unfold, thereby elevating the experience. Designed to be provocative in its own way, classical and modern references are deconstructed, reinterpreted, and combined to create a nuanced aesthetic vocabulary. Unique and experiential, the distinct design style is representative of the family, and exclusive to the home, infusing the property with an identity of its own.

Through the main entrance portal, a central corridor through the middle of the house, adorned with 10-foot wall coverings, an additional two feet of upholstered fabric walls, and a white millwork ceiling with trimming, contains a variety of gathering spaces. At each end of the



corridor, cast concrete archways prominently frame connections to the exterior. In between, portals to rooms along the circulation path are delineated by onyx insets in the marble flooring, inviting guests to move through the series of spaces.

At the very center of the interior, a perpendicular corridor connects the opposing wings, presenting a crossroads where Chenin designed four containers to house programmatic concepts. The contents of the containers include a music room, a formal living room, a dining room with a secondary portal leading into the kitchen, and a framed stairway leading up to the upper entertainment level.

"The corridors provide movement and visual connections with the exterior through the periphery of the house," notes Chenin. "And the bulk of the circulation is accessed through portals into the four main containers of the home, with the two paths crossing under a beautiful, custom-designed light fixture."

A portal to the living room leads into a vestibule flanked by powder rooms on either side, which

transitions into a communal space embraced by embroidered wall coverings and a double-sided fireplace featuring a 12-foot-tall orange onyx cladding. Framing the fireplace, calming blue millwork trimmed walls, adorned with artwork depicting aquatic themes, provide a contemporary twist to a classical room.

Directly across the hall from the framed stairway, a media room with a piano and a big screen TV provides a casual setting characterized by faux leather upholstered walls that provide it with an acoustical wrap. Above the 10-foot mark, fabric-wrapped panels with carefully aligned seams provide further acoustical containment, as well as an infusion of warmth.

“Organizationally, the house is a modern interpretation of a Palladian design,” adds Chenin. “Its true beauty lies in its blend of classic underpinnings, modern flares, and whimsical infusions.”

Situational comfort

Daniel Joseph Chenin, Ltd.’s furniture selections for Palladio are eclectic and situational, ranging from the richness of resort-style lounging, bedding, and dining, to more contemporary and playful pairings for leisure spaces. In alignment with the patterned entrance to the front courtyard doors, for instance, the main dining room chairs feature Chenin’s custom-designed, hand-embroidered fabric with radial patterns on the back, symbolizing the house as a central point from which activity radiates in all directions.

“This project granted us creative control over the entire property, including the external environments, the architecture, and the interiors,” he says. “That included sourcing custom-designed furniture pieces and lighting fixtures that align with the vision of each space, as well as artwork that was not part of the clients’ existing



collection. This allowed us to deliver a level of cohesion and singularity of vision for the entire estate.”

To respond to the clients’ desire for their new home to serve as a gathering place for family and dear friends, an expansive central gallery was designed to accommodate dining room overflow, with a large communal table capable of seating 60+ guests. Not long after taking possession of the home, the couple put that vision to the test.

“We hosted a large Thanksgiving celebration, and the different rooms supported varied connections, from intimate conversations in the living room to reminiscing over cocktails in the bar,” says the Client. “It was exactly as we imagined it would be - a home to create memories for a lifetime.”

All liveable rooms were proportionally designed to be fully daylit courtesy of the house’s solar orientation and expansive windows

that draw abundant natural light. Palladio is supplementally illuminated by layered decorative fixtures, including four Lobbmeyr chandeliers, originally designed for the Metropolitan Opera, and hand-forged creations from Charles Paris. Chenin selected the steel window framing system to echo the patina imperfections of other metal finishes including brass detailing, a flame-treated kitchen countertop, and subtle relief details seen in the millwork.

“There are a lot of subtle textures in the house where you can see that human hands either created the element or were integral in the process,” explains Chenin. “The window system is no different in that respect, and we chose a system forged and glazed by hand, rather than through assembly line.”

A suite of personal spaces

A vestibule at the end of each hallway denotes the entrance into two of the house’s five guest bedrooms, with an option to lock off and connect the two rooms. A secondary circulation corridor provides access to other guest bedroom portals, as well as supporting spaces.



“Daniel’s process is very linear and detailed, and he was able to extract, distill, and translate the essence of who we are and how we live into a design that beautifully supports our lifestyle,” notes the Client. “The vision was delivered verbatim, yet the reality of the finished home exceeded our already high expectations.”

Each of the guest bedrooms offers accommodations equal in size, with resort-quality touches including millwork walls with upholstered inserts, custom-embedded storage drawers in the beds to maximize space, a work desk, a big screen TV, and bathrooms featuring closed off water closets, marble double vanities, and expansive glassed-in showers with an integrated tub. Marble walls and floors, differing slightly in their patterns, contrast with rift-cut oak door frames and storage spaces. Each bedroom also provides guests with direct access to secluded garden seating areas, divided from one another by strategically placed planters.

“We approached the design of the rooms from an anticipatory standpoint, thinking ahead to what the clients’ family and guests might need,” says Chenin. “There are plenty of little details in terms of thinking it through, including both internal and external sightline considerations.”

At the opposite end of the corridor, the private wing was designed to be a self-contained haven of comfort and luxury, with additional access for the clients provided through a

private garage entry. Internally, the primary area is accessed through a study, which serves as a gateway to a short corridor of thickly-padded carpeting and walls that connect to the primary suite and quickly silence any ambient noise. His and her bathrooms and closets line opposite sides of the hallway, which leads to a sitting area connected to the primary bedroom chamber. Dark detailing defines a more masculine bathroom, highlighted by a glassed-in outdoor shower that opens like a solarium, with operable windows and a glass roof that connects to the outdoors. Lighter stone patterns and a stand-alone soaking tub characterize the feminine design on the opposite side, with closet doors wrapped in leather insets with stainless steel trim and custom hardware. In the bedroom, a hand-painted Fromental wallcovering and custom-designed wall-to-wall carpeting complete the suite’s luxurious embrace.

“Our projects are about creating unique responses to the needs and desires of our clients, and Palladio is no exception,” concludes Daniel Joseph Chenin. “Above all, the journey begins with building relationships with clients who entrust us with their most intimate spaces with the knowledge that we will translate their vision into a bespoke, artistic expression.”

AJI

ALEXANDER JAMES INTERIORS

Alexander James is one of the leading
Interior Design houses in the UK,
recognised in the World's Top 100

We serve private clients, property developers, and commercial partners who value a different approach. We believe the world deserves design without boundaries, welcoming everyone but not dictating to anyone.

That's why we work by your side and on your side.

For carefully considered creative design that's seamlessly seen through, we welcome you to share your vision and let us unlock limitless possibilities.



www.aji.co.uk • www.shopthelookbyaji.co.uk

Interior Architecture • Interior Design
Show Home • Full Turnkey



0203 362 4389 • enquires@aji.co.uk



ESSENTIAL MULTIFUNCTIONALITY

With the "AX" stool and the "Mule" bench, Zilio A&C launches a collaboration with Alessandro Stabile. This partnership, rooted in a profound aesthetic and functional affinity, is reflected in the distinctive and minimalist beauty of the two projects.

For the first time together, renowned Milanese designer, Alessandro Stabile, and the historic Friulian brand, Zilio A&C, present two projects: the AX stool and the Mule bench family.

The partnership combines Stabile's innovative vision with the craftsmanship of Zilio A&C, founded in 1951 in Manzano, in the heart of the Udine chair district.

"With Alessandro Stabile, there has been a deep harmony of aesthetic views. The iconic simplicity of his design made me feel completely at ease because it perfectly matches our pursuit of timeless forms,"

says Carlo Zilio, CEO of Zilio A&C. "Both projects are also interesting for their versatility. They are immediately recognizable, opening up to multiple uses."

AX: The crystallization of a gesture into a multifunctional stool

The AX stool evokes the moment when the wood log, struck by the woodsman's axe, splits in two. It is the temporal crystallization of a gesture translated into a clean and extremely marked form.

"I fully recognize myself in the sophisticated essentiality of Zilio A&C, and the high-quality craftsmanship of the company, which manages to scrutinize every small detail through ingenious and accurate workmanship, has been a great stimulus for me," says Alessandro Stabile. "For AX, I worked on a strong design concept, deliberately avoiding nuances of meaning so that it would be immediately understandable to the end user. A stackable stool that, with its almost graphic purity, transcends time and paradoxically lends itself to many different impromptu situations, from domestic spaces to contract settings."



The split that characterizes AX suggests its grip for moving and stacking. It is an ideal complement as an informal seat in restaurants and bars or exhibition spaces, and in contexts such as libraries and bookstores, to quickly set up a talk area, or even to be freely positioned in home interiors. Made of ash plywood, it is available in five customizable tones: alongside natural and black, blue, green, and red are primary and saturated colors



that add a pop touch. Meticulous details embellish the stool and increase its functionality, such as the split that continues into the seat and is perceived in the slight inclination of the wood, creating a refined chiaroscuro movement. There is also an internal construction system which, when stacking the stool, prevents it from sliding down, thus protecting the wood from excessive rubbing and wear to ensure its durability over time.

MULE:

Archetypal benches with zen vibrations

The Mule project is a family of ash benches whose milled solid wood sides enhance the sculptural linearity imagined by Alessandro Stabile.

“The skilled craftsmanship enhances the richness of the material and generates a noble object, composed of two suspended monoliths that support the seat,” the designer explains. “It’s a sort of small temple that, with its solid continuity, conveys a sense of calm and seems to slow down the perception of time in the observer, inviting them to sit for a break in the flow of daily life.”

Mule can also be interpreted in many different ways, from a temporary seat, perfect for contract use in a showroom or store, to a domestic surface to be moved as needed in the living room for a book or cellphone. In the bedroom, it can serve as a bedside table or valet stand, or in the bathroom as a storage space. The bench is available in two sizes – 60 and 120

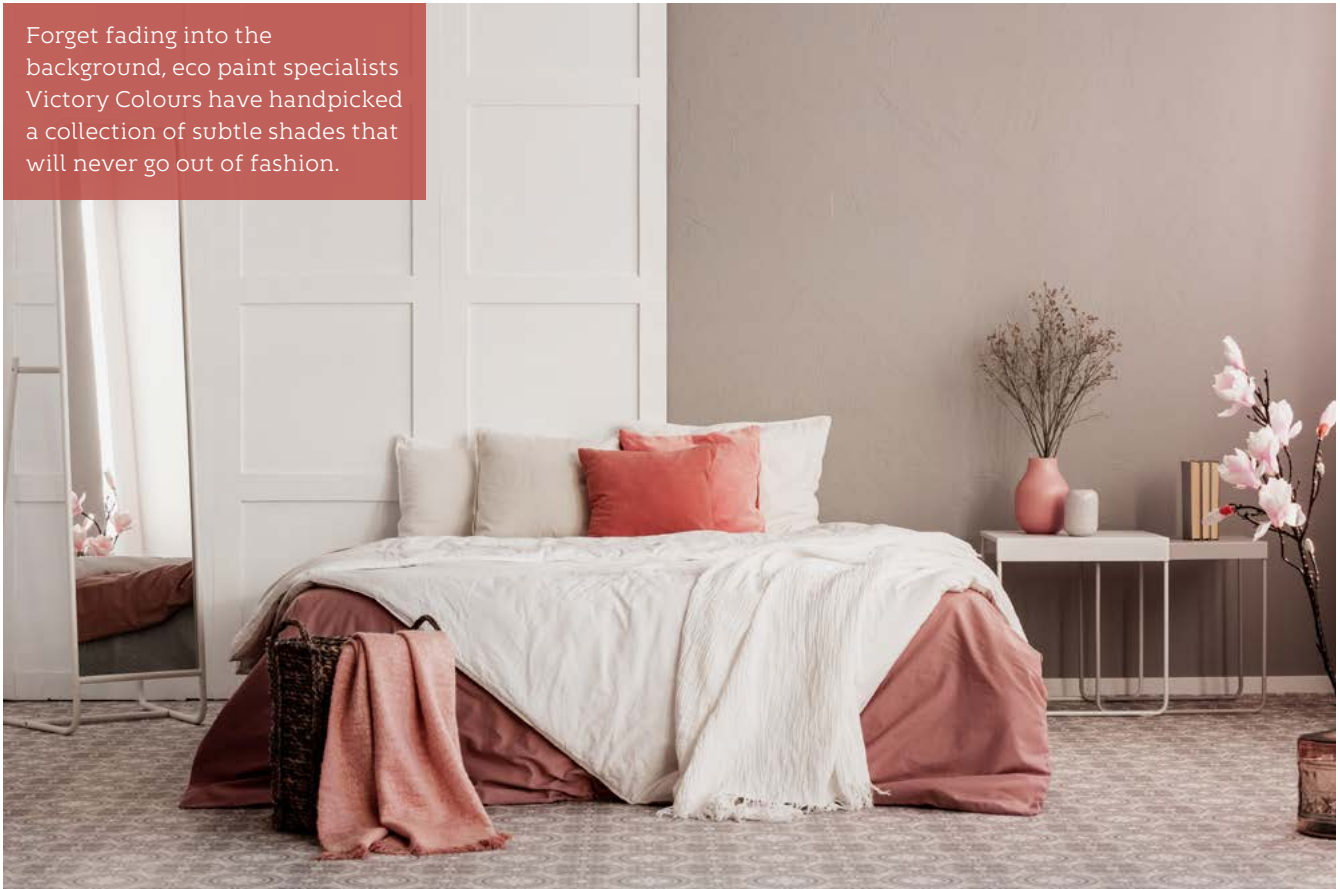
centimeters – in a refined organic and intense palette: olive green, smoke, and rust red, in addition to the classic black and natural ash.

AX AND MULE:

Beyond the common concept of seating, AX and Mule are two iconic projects that blend intuitive simplicity and craftsmanship rooted in the territory, delicately entering the domestic landscape and collective spaces with their timeless forms.

THE NEW NEUTRAL DISCOVER VICTORY COLOURS' RANGE OF TIMELESS CREAMS

Forget fading into the background, eco paint specialists Victory Colours have handpicked a collection of subtle shades that will never go out of fashion.



Classic Creams brings together five hues from Victory Colours' established collection of sustainable paints to show how even the most ethereal colours can make an impact when it comes to interior design.

Victoria Yardley, Managing Director of Victory Colours, said: "Unlike some colour trends that have been and gone, cream is a cornerstone of timeless design. It is incredibly versatile and can create a feeling of both light and space.

"And while it might not be the boldest shade, it has a really transformative effect which can be incredibly powerful."

Unlike white paint, cream injects a touch of warmth when used in interiors, aiding comfort and relaxation and creating an inviting space. What's more, it's the perfect backdrop around which to build the rest of your interior scheme, allowing accessories to shine.

Victory Colours' Classic Creams Collection features 1969 No.69, which offers a touch of pink, while Madge No. 8 is a deeper cream with earthy hints of taupe.

Tumbledown No.6 is a pale cream - the new go-to for interior designers - which complements metallic finishes. The pale yellow, with a very subtle hint of pink, of Cockleshell

No.3 envelopes interior spaces with warmth, while Pearl Catcher No.5 is a gorgeous off-white with real creamy tones.

Victoria added: "Whatever the property or interior scheme, cream is one of the few colours that will work in all settings. Homeowners who want a fresh new look for summer won't go wrong with one of these shades."

Victory Colours' Classic Creams Collection is available now from Victory Colours, priced at £44.95 for 2.5-litres of matt emulsion.

www.victorycolours.co.uk



GRAPHENSTONE®



Paint On Nature's Terms™



Trace VOC's only

Natural Minerals

CO2 Absorbing*

info@graphenstone.co.uk

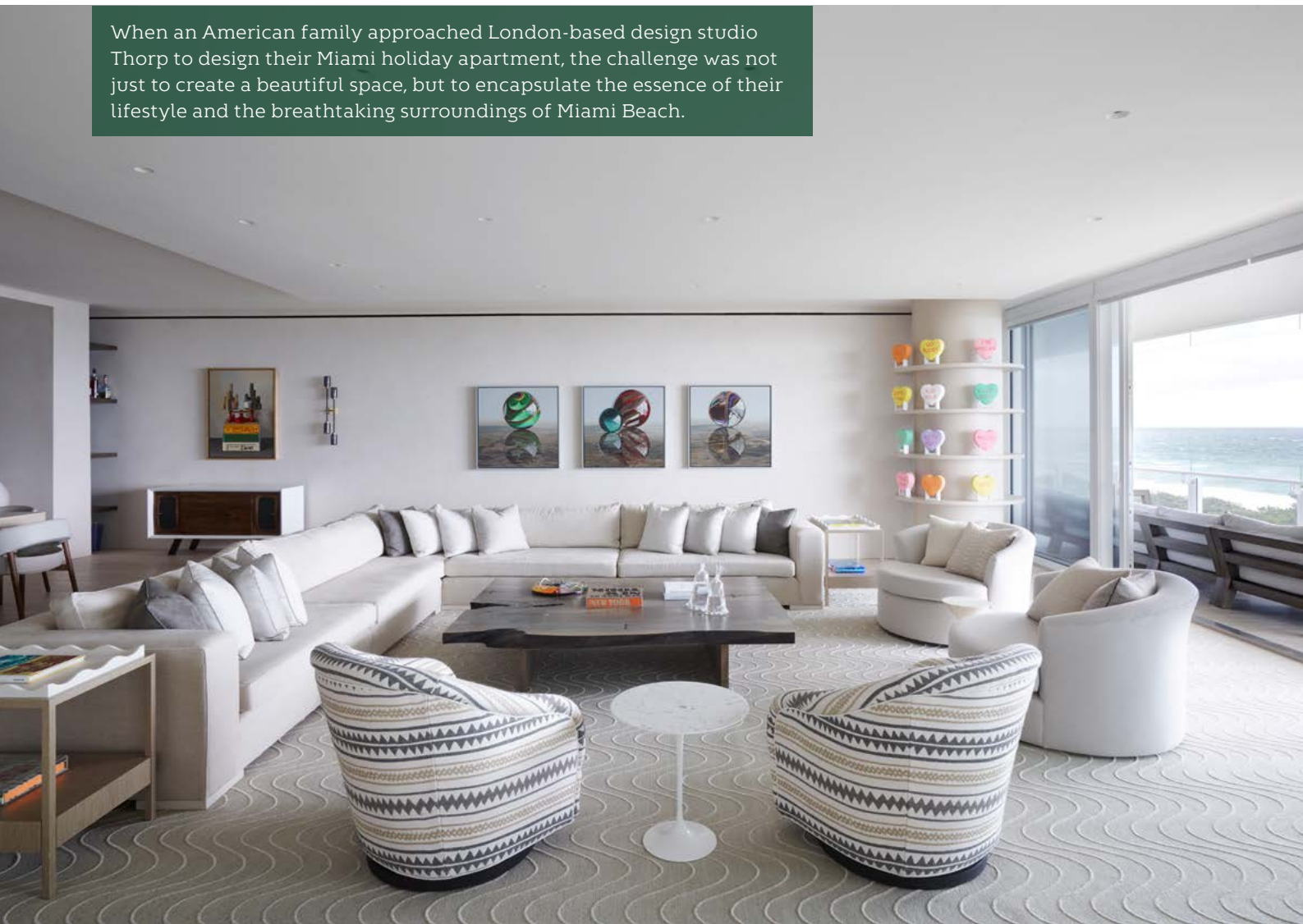
01379 772940

graphenstone.co.uk

** majority in first 30 days after application*

TRANSFORMING SPACES: THORP'S MIAMI BEACH MASTERPIECE

When an American family approached London-based design studio Thorp to design their Miami holiday apartment, the challenge was not just to create a beautiful space, but to encapsulate the essence of their lifestyle and the breathtaking surroundings of Miami Beach.



This close-knit family, who discovered Thorp's exceptional work during a stay at a property designed by the studio in the Bahamas, desired an open-plan, tranquil environment that would serve as a perfect retreat from their busy lives. They wanted their new home to be a sanctuary that reflected the stunning beach views and the vibrant yet calming essence of their favourite vacation spots.

THE OWNER'S VISION

The family, known for their love of entertaining and spending quality time together, provided a clear brief. They wanted an open-plan layout to ensure a sense of spaciousness and fluidity throughout the apartment. The master bedroom was to be reconfigured to enhance its

spaciousness and flow, making it a serene haven. The challenge was to fill the large, shell property they purchased from a developer with furnishings that would not only complement the expansive space but also provide comfort and style.

In addition to their Miami project, Thorp previously collaborated with the family on another home in the exclusive Yellowstone Club in Big Sky, Montana.



wave design inspired by the sea, reinforcing the apartment’s coastal location and adding to the thematic continuity throughout the space.

DESIGN ELEMENTS AND SPATIAL SOLUTIONS

One of the most striking features of the apartment is the media room, located at the back end of the sitting room. Despite being an enclosed space, it maintains an open feel through the use of a glass wall, ensuring visual continuity with the rest of the home. This design choice preserves the sense of openness that the family desired, even in a more intimate setting.

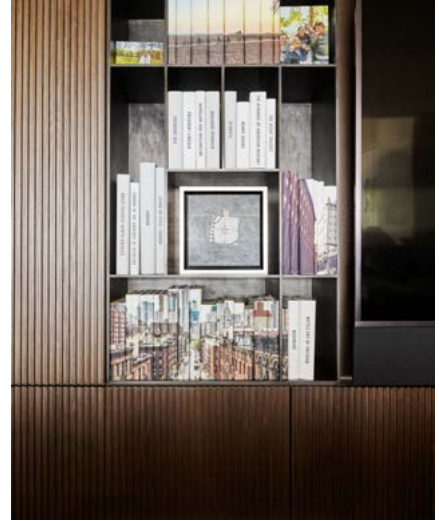
This retreat, characterised by its bright and tranquil aesthetic, served as an inspiration for the owners to create a beachside counterpart in Miami.

HARMONISING WITH NATURE

Given the apartment’s prime location right on the beach, reflecting the natural surroundings within the interior design was crucial. The design philosophy centred around simplicity and elegance, harmonising with the natural beauty just outside the windows. The breathtaking views served as a primary inspiration, guiding the interior scheme towards a look that resonated with the calm and serene beach environment.

To achieve this, Thorp employed a light and bright colour palette with neutral, earthy, and calming shades. These colours not only reflected the external environment but also created a seamless transition between the interior and exterior spaces. Natural textures, materials and motifs were chosen to enhance this connection further. For example, the living room rug features a





To address the modest ceiling height, Thorp strategically used linear patterns to visually elongate the space, creating a sense of verticality. Another ingenious solution was the raised area for the dining table in the living room, which not only provided separation from the sofa, but also offered unobstructed views, breaking up the large open-plan space without compromising on the cohesive aesthetic. This thoughtful design approach ensured that every corner of the expansive apartment was utilised effectively, creating functional yet beautiful spaces.



BESPOKE FURNISHINGS

The furnishings in the apartment were predominantly bespoke, tailored to suit the unique needs and preferences of the owners. Thorp collaborated with a local company to craft custom pieces such as headboards and joinery, ensuring that each element fit perfectly within the overall design scheme. Other items were sourced from England, adding distinctive character to the apartment's décor.

Key pieces included bespoke rugs that complemented the interior scheme, dining chairs from Klasic, and paper hanging lights from The New Craftsmen. The bubble pendant lights from Giopato and Coombes added a whimsical yet sophisticated touch to the spaces. Each piece was carefully selected or designed to enhance the tranquil and elegant ambiance of the apartment.

A SEAMLESS BLEND OF LUXURY AND TRANQUILLITY

Thorp's design for the Miami holiday apartment is a testament to studio's ability to create luxurious environments that reflect their clients' lifestyles and the natural beauty of their surroundings. By incorporating natural textures, a calming colour palette, and bespoke furnishings, they transformed a shell property into a serene sanctuary. This project not only showcases Thorp's design excellence but also their commitment to understanding and fulfilling their clients' visions, creating spaces that are both beautiful and meaningful.



WIN THE WAR ON THE FLOOR

Whatever type of flooring you have - wood, laminate etc. - it needs protecting. The fact is that when furniture and flooring meet, there is friction and can be damage. So, let's look at what you can do to cushion the blow.

PROTECTION IN 5 WAYS BEFORE PROBLEMS HAPPEN:

Most protection solutions protect you in 5 ways:

- 1: Protects flooring from the impact of furniture
- 2: Protects furniture joints from being fatally weakened
- 3: Protects ears from noise
- 4: Protects from back pain as furniture slides easier
- 5: Protects from customer complaints and insurance claims

WHAT PROTECTION DO I NEED?

For solid wood, laminates and hard tiled flooring: Use self-adhesive felt or glides such as QuickClick.

For carpet, rugs and vinyl flooring: use glides such as Furni-glides or QuickClick Glides.

SELF-ADHESIVE FELT

Why buy? It's the cheapest option. On a roll from Stroomount, for example, they can cost as little as 1p each.

It's a short-term solution: if you want a longer-term solution, choose glides such as QuickClick.



QUICKCLICK GLIDES

Why buy? This is an award-winning durable, longer-term 4-in-1 protective solution. The interchangeable glides make it easy if you want any furniture to be on a different floor type: just swap over to that type of glide to protect that flooring.

Flooring types: Quickclick works on all floor types. It has 1 screw-in base and 5 interchangeable easy-to-click in glides for 1) carpet, 2) wood floors, 3) laminate floors. 4) tiled floors. 5) anti-slip glide.

Fitting: You just screw in the base cup into the foot and then click in the type of glide you want. To swap over glides, just click out the old type and click in the new one.

Sizes: available from 17-50mm diameters.

Ideal type of furniture: tables, chairs, sofas, lounge chairs, beds. Ideal to cushion and quieten dining chairs that get frequently scraped back and forth: reducing noise by up to 75%.

Top Tip: fix two felt glides onto the back legs of a sofa and two anti-slip on the front. This keeps it in place and makes it easier to clean: you've no need to lift up the whole thing, just lift the front of the sofa and slide it forward.

Flooring type: Use on all solid wood, laminates, tiles and vinyl. Probably best on furniture that's not moved often.

Fit it in seconds: Just peel back the cover and stick on the furniture feet. Allow it to set firmly for 24 hours.

Sizes: Available in a variety of sizes and chapes from circles and oblongs to L-shapes up to 75mm

Ideal type of furniture: Coffee tables, lamp tables, bedside tables, dining tables, storage cabinets, desks, workstations, filing cabinets

Top tip 1: check for grit on the feet before you add the felt so it's not scratched along your floor.

Top tip 2: Beware of companies skimping on thickness. You need a minimum of 5mm thickness to cushion flooring from furniture.

Top tip 3: Beware of using self-adhesive felt with heated floors: the glue doesn't stick properly, so extra care needs to be taken. With metal leg furniture, self-adhesive felt may be the only protection option, so it's always best to let customers know that they need to keep an eye out for any movement. Advise them to replace them immediately if they become unstuck as it's cheaper to do this than replace the whole floor.



PROTECT AND CARE

Carpets • Hard Flooring • Luxury Vinyl Tiles

AWARD
WINNING
INTERCHANGEABLE
& GLIDE SYSTEM

Quickclick

Protect 4 types of flooring
with 1 interchangeable
glide system



Quickclick ensures that we protect our beautiful wooden and marble floors from irreparable damage and allow easy movement of furniture

Roch Castle & Penrhwi luxury guest accommodation
Pembrokeshire, Wales



Stroolmount

Exclusive to Stroolmount

Carpet, wood, laminate or tiles: Quickclick gives long-term protection for them all. So when moving any furniture to a room with different flooring, just click in a protection glide for that floor type.

Quickclick protects your flooring

Chairs scraped back and forth wear down even the most resilient flooring. Quickclick, keeps flooring looking its best for much longer.

Quickclick protects your furniture

It minimises wear and tear, plus reduces stress on your chair and table legs.

Quickclick protects your ears

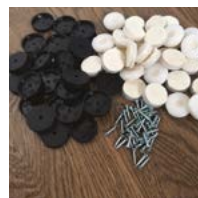
Noise is reduced up to 75%. So your dinner party needn't be interrupted by unbearable screeching – or at least by the chairs!

Step by Step

- 1 Screw in a Quickclick base under each furniture leg.
- 2 Click a glide into the base. You're now protected.
- 3 To swap a glide, click it out with a screwdriver and pop another one in.



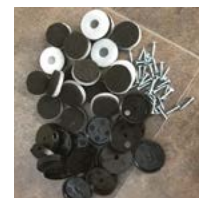
Available
IN PACK OR
IN BULK



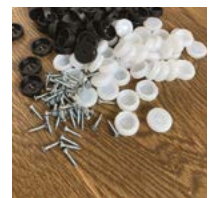
Wood



Carpet



Tiled



Anti-Slip



FLOORING & FURNITURE PROTECTION SOLUTIONS

View Products, POS, Videos & Become A Stockist

01942 271 271

sales@stroolmount.co.uk

www.stroolmount.co.uk



SEMPRE: CRAFTING AMBIANCE BEYOND DESIGN

SEMPRE'S VISION

Sempre's vision transcends traditional design. We are artisans of ambiance, crafting environments that resonate emotionally and leave lasting impressions. Our philosophy blends natural and organic elements with rigorous attention to detail, creating spaces that captivate and support the aspirations of our clients. This vision is also reflected in our collection of Blue Stone Top Tables. Indeed, our exquisite blue stone top tables transform spaces as each table is a masterpiece, crafted to harmonize natural beauty with meticulous attention to detail. Our tables are more than furniture; they are the centrepiece of ambiance. Above this, our blue stone tables have a unique history as they are

made from Authentic Belgian blue stone and handcrafted in Belgium by the finest artisans.

THE AUTHENTIC BELGIAN BLUE STONE

Our blue stone tables are crafted from authentic Belgian blue stone, known as "La Pierre Bleue du Hainaut". This natural and authentic material originates from the Belgian subsoil, dating back 350 million years to when a tropical sea covered the region. Belgian blue stone is characterised by many fossils, cemented in a micro-crystalline gangue containing very finely divided carbon, which gives the limestone its blue greyish colour.

The advantages of Belgian blue stone are unwavering:

1. Easy Maintenance: Simple to care for, ensuring lasting beauty.
2. Strength and Longevity: A solid, timeless material that improves with age.
3. Unalterable Charm: Maintains its properties and charm over time, offering exceptional longevity.





SUSTAINABILITY AT THE CORE

Our commitment to sustainability is unwavering. In combination with the blue stone table tops, we use reclaimed teak and oak, salvaged from old structures, to create eco-friendly furniture. Choosing Sempre means embracing a sustainable lifestyle, adding eco-conscious elegance and a sense of history to your home or project.

BESPOKE CREATIONS FOR THE EXTRAORDINARY

Sempre is synonymous with bespoke designs and luxury which obviously means that we offer tailor-made tables that reflect the unique personality of each client, home or project.

ENGAGE WITH SEMPRE

For those who dream of personalized havens that reflect their unique stories, Sempre invites you to reach out. Contact our sales department at info@sempre.be, referencing AOD69, to begin your journey. Embrace the art of design with Sempre, where every creation is a testament to crafted ambiance.



Visit Our Website: www.sempre.be
Follow Us on Instagram: www.instagram.com/sempre.be

BOLDSTONE SCULPTURE



such as corporate headquarters or sculptures for luxury residences we create drawings, samples and storyboards to help work with you to realise your idea.

If you are interested in a private viewing or presentation and wish to discuss a specific project or require more information please email us at info@boldstone.co.uk to start the conversation.

We have been privileged to work with many clients at all scales over the years and enjoy participating in creating artworks suitable for public and private spaces, gardens and interiors.

Our studios are based just outside Bath in Somerset.



Boldstone Sculpture designs and makes original art working with interior and garden designers, architects, property developers and private clients. We work on large and small scale projects including individually created commissions.

using differing mediums and materials expressed in sculpture with stone and metal effects. Not all our designs are available on our website for privacy and copyright reasons.

Boldstone's wall sculptures and artworks are adaptable to different settings, whether that be urban loft, offices, residential spaces, hotel lobby and spa or gardens.

Inspiration for our artworks comes from observation of pattern in nature and interpretation of pattern interacting with light, shadow, colour, line, form and texture. Themes are developed

We collaborate closely with clients to create bespoke wall sculptures tailored to specific spaces, themes or concepts. For signature pieces

www.boldstone.co.uk



Boldstone

art inspired by nature

A : Boldstone Sculpture, Court Essington, Midford, Bath, Somerset, BA2 7BX

E : info@boldstone.co.uk | W: www.boldstone.co.uk | M : +44 (0)7766763566



CERA - CERAMICHE REFIN

UNEXPECTED SOFTNESS

Ceramiche Refin proudly unveils Cera, an innovative proposal that generates new emotions and traces a timeless dimension.

As in synaesthesia, Cera's surface comes alive and becomes a multi-sensory narrative, arising from an evocative connection with organic matter. Archaic gestures are transformed and evolved through contemporary interpretations, suggesting endless possibilities for everyday environments.

An unexpected surface

The unexpected collection, never static to the eye, but perfectly smooth to the touch, conveys a complete feeling of lightness and naturalness. Ceramiche Refin recreated the plasticity of wax by elaborating a deep surface, where small cracks, cavities, and traces - derived from casting and following hardening - seem to dance lightly on a background that alternates light and dark areas. The overall effect tends to be homogeneous; as you approach it reveals the richness of the details and nuances, giving the material distinctiveness and movement.

Three original shades

There are three original dusty shades, which create a complete colour spectrum through their metaphorical names: Luce - light - is a luminous white, expressing feelings of purity; Fumo - smoke - is a refined grey, enhancing the depth of the graphic pattern; Incenso - Incense - is a warm shade, characterized by a strong personality. There are also three sizes: the 60×120 cm is flanked by the 120×120 cm, a contemporary size ideal for emphasizing the material's aesthetic qualities. These are joined by the new 6×24 cm wall tile size.



The dynamism of the Scaglie graphic

The Scaglie graphic, available in 60x120 and 120x120 sizes, and in both Cerasilk and Matt-Pro finishes, is perfect for both flooring and wall covering. Small fragments of wax in shades of Fumo, Incenso, or in the Multicolore variant spread across the Luce background, giving the product renewed three-dimensionality and a delicately rhythmic image.

The innovative Cerasilk finish

Through constant experimentation, Ceramiche Refin has developed a special finish for this collection:

Cerasilk offers a particularly soft and silky hand that conveys the fluidity of the wax also to the touch, enhancing the textural effect. The matt and, at the same time, slightly reflective surface allows for an unprecedented, elegant, and refined perceptive result.

A contemporary size

The new 6x24 cm size lends itself to multiple cladding solutions to enrich rooms with a dynamic and unconventional style.

The story behind Cera

Like alchemists, Ceramiche Refin manipulated the material and

transformed its essence into an original work: wax, a familiar yet ancestral substance, thus acquires an innovative character through this experimental interpretation. Ceramiche Refin has created a unique and precious product that creates an all-round experiential feeling, through an almost magical process.

Inside the Company's laboratory, the Tile Developers and the Tile Designers constantly work together to overcome the limits of porcelain stoneware production, trying to be not only experimenters, but also innovators, in order to come up with proposals that have truly unprecedented content.

This surprising collection starts with the exploration of the potential of a never-before-investigated element, tells of the creative capacity of Refin, and testifies to its ongoing commitment to pure research.



www.refin.it/cera



Bring spring into your home with these gorgeous leafy selections from independent wallpaper design house Ohpopsi.

BEYOND BE-LEAF OHPOPSI SHOWCASE LEAFY SELECTION

Bringing together Ohpopsi's statement beautiful bold colours and patterns with an added injection of greenery for a biophilic burst of summer.

The selection celebrates the rich flora and fauna of the natural world and transports it directly into the home.

Zoe Eaton, Creative Director of Ohpopsi, said: "Biophilia has been one of the big trends in interiors over recent years and it's easy to see why. It reduces stress levels, improves productivity and generally gives our moods a really good boost.

"This selection has been curated from our established designs to give

living spaces and bedrooms a huge dose of biophilic goodness. From the pattern to the colours, these designs have been handpicked to help homeowners connect to nature."

The Leafy Selection features Houseplant, a design that celebrates the beauty of houseplants.

Fortunately, these hanging houseplants require a lot less maintenance than the real thing.

Glasshouse was inspired by Glasgow's famous Botanical Gardens and features a playful take on tropical leaves.

The final addition to the collection is Hummingbird, which offers an explosion of foliage in striking shades of forest green.

Zoe added: "Our mission at Ohpopsi has always been to make homes feel joyous and positive and nothing sums up that ethos more than the Leafy Selection."

The Leafy Selection is available now, with prices starting at £47 per roll.

ohpopsi.com



BESPOKE TAILORED SOFT FURNISHINGS, CURTAINS, BLINDS AND UPHOLSTERY FROM CURTAINCRAFT LTD

Curtaincraft are specialists in all areas of bespoke soft furnishings as well as curtain and blind making for domestic and commercial environments. We supply and install poles, tracks and interior design accessories using the highest quality materials and expertise.

As an independent, Sussex-based team formed over 30 years ago we are able to assist and complete your vision from inception to installation, providing a professional, personal experience for all our clients. We pride ourselves on providing all clients with the highest standards throughout the process. From our expert guidance on site, in our showroom and at the point of installation, our dedicated team will always endeavour to fulfil your requirements.



We have an appointment-only showroom in Sussex so we can fully dedicate our time to each client. For our local area, an in-home visit can also be arranged to suit your needs. Our team are always happy to advise the best approach to assisting you with your specific requests.

We supply fabrics from a vast array of designers, whether your taste is simple elegance and classic design or a subtle combination of traditional luxury and contemporary living. Very few elements in interior design offer as much versatility and possibility as decorative textiles which can give a room its authenticity and personal stamp.

With our exceptional attention to detail, we are proud to play a vital role with our Architect & Design

Clients, many of which have won renowned global awards. From high-end profile clients to our commercial manufacturing of anti-blast/bomb blast systems for worldwide embassies, our specialist skills serve a wide range of clientele in the south east, Surrey and London areas.



For more information about our bespoke soft furnishings, fabrics and services, please call us on **01825 790766** or visit us at **www.curtaincraft.co.uk**

CURTAINCRAFT LTD

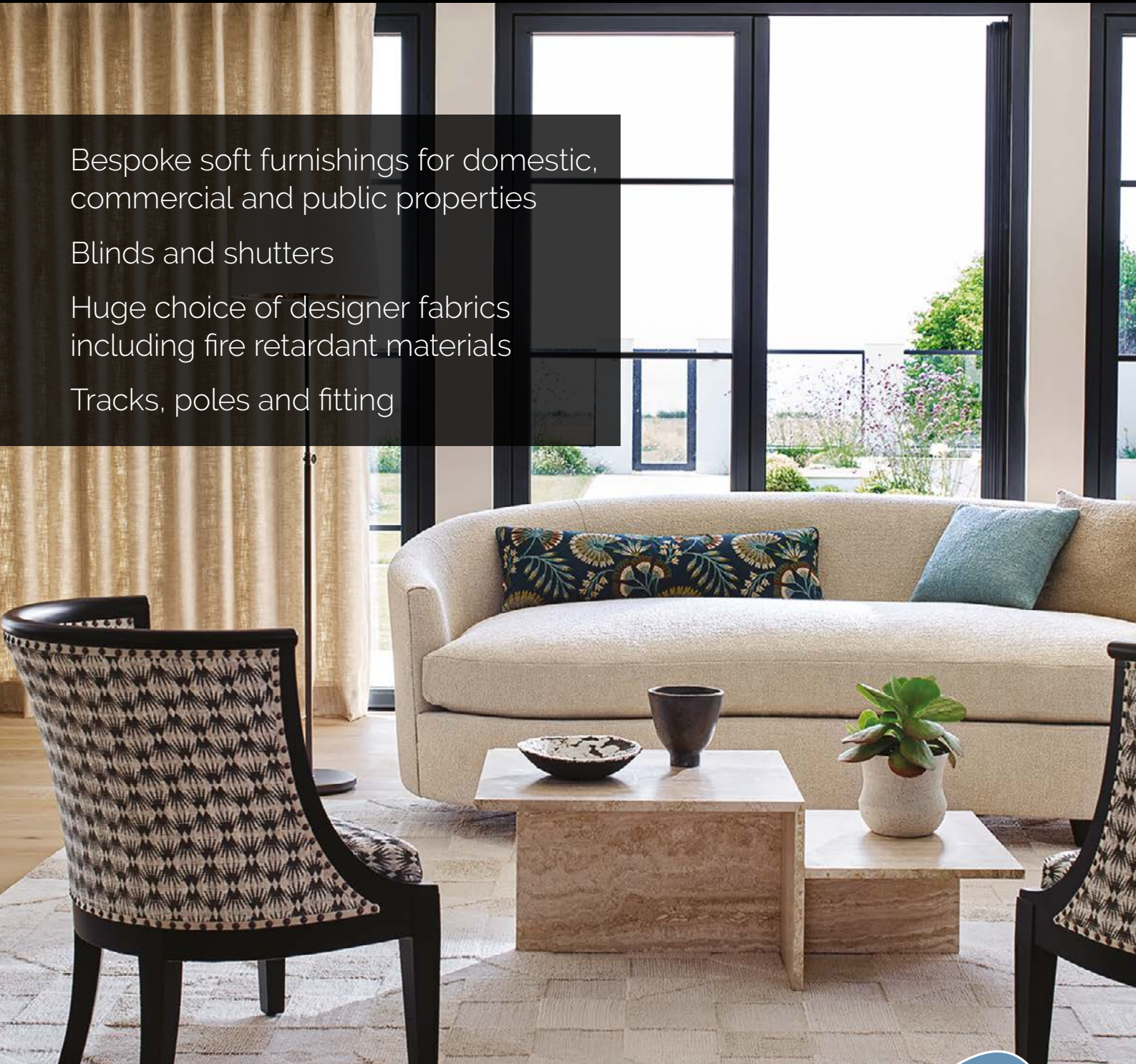
BESPOKE SOFT FURNISHINGS

Bespoke soft furnishings for domestic,
commercial and public properties

Blinds and shutters

Huge choice of designer fabrics
including fire retardant materials

Tracks, poles and fitting



Curtaincraft Ltd . Freshfield Lane . Danehill . RH17 7HE
01825 790766 . www.curtaincraft.co.uk

Please note – we are open by appointment only





STORIGRAPHIC LAUNCHES **NEW HERITAGE WALLPAPERS**

Storigraphic's distinctive collaboration with acclaimed British design heritage brand Hornsea® (Pottery) has launched a much anticipated, exciting new product line of wallpapers.

Featuring Hornsea's celebrated designs, Saffron and Geo in two new colourways, offering four wallcovering editions.

Storigraphic's new wallpapers showcase their attention to pattern, graphic and colour detail – adding to their existing wallpaper range to provide a growing collection of strong, design-led wallcoverings for décor at home, work or business.

Geo Blue Edition – Storigraphic x Hornsea®, 'Originals/Moderns' Collection – 10m Non-Woven Wallpaper



Geo Orange Edition – Storigraphic x Hornsea®, 'Originals/Moderns' Collection – 10m Non-Woven Wallpaper



Saffron Grey Edition – Storigraphic x Hornsea®, 'Originals/Moderns' Collection – 10m Non-Woven Wallpaper



Saffron Orange Edition – Storigraphic x Hornsea®, 'Originals/Moderns' Collection – 10m Non-Woven Wallpaper



The wallpaper range is available in non-woven 10m rolls, and produced in partnership with acclaimed UK heritage wallcovering manufacturer, Anstey Wallpapers.

See the full Storigraphic x Hornsea®, 'Originals/Moderns' Collection:
<https://storigraphic.com/collections/storigraphic-x-hornsea>

Storigraphic is an independent design studio, sustainable brand and store, creating award-winning paperware, accessories and homeware to transform the everyday. All products are recyclable (paper-based products) and sustainably made in the UK, with 5% of sales profit donated to charity, and a portion of each sale allocated to planting a young native tree across the world.

www.storigraphic.com



Artist Patricia Braune unveils her new Bay Lines Wallpaper and Textile Collection.

Patricia Braune's journey in Textile & Surface Design has produced ten distinctive collections in as many years.

A wanderer by nature, Patricia's designs are deeply influenced by her travels and explorations, drawing inspiration from the natural environments she encounters.

Brazilian by birth, Patricia experienced a transient childhood, living in Germany and South Africa. Currently, Patricia has made a home and studio in the picturesque coastal village of Nelson Bay, Australia.

With a background in design and advertising, Patricia discovered her passion for intricate hand illustration and interior textile and wallpaper design. Her keen eye for composition, globe-trotting ambitions and continuous seeking of new sources of inspiration fuels her design process.

Patricia begins her design process with pen on paper, meticulously capturing fine details that define her signature style.

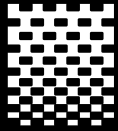
For her wallpapers, Patricia's designs are commercially printed on high-quality materials to ensure durability and vibrant colour retention.

INSPIRED BY THE SOOTHING RHYTHMS OF THE BAY



Inspired by the soothing rhythms of Nelson Bay, artist Patricia Braune unveils her new Bay Lines Wallpaper and Textile Collection.

patriciabraune.com

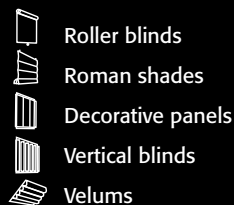


Life is not just Black and White

Fibreglass cored
fabrics for effective
solar protection
and glare control



Mermet technical fabrics are available in a wide range of double sided colours and all are fire resistant to BS 476 Pt 6 Class 0



T: 01989 750910 E: info@mermet.co.uk www.mermet.co.uk



WHAT TO EXPECT AT THE FLOORING SHOW **THIS SEPTEMBER**

Earlier this year The Flooring Show announced its expansion into Hall Q, a decision that sees the show grow by 30%. Such growth is testament to the strength of the flooring industry and cements the show as the UK's largest and market leading flooring trade event.

Open to retailers, contractors, fitters, architects, interior designers, specifiers, project managers, the list goes on... this is an unmissable event for anyone within the flooring industry. This year's dates are set for 15-17th September, at its much-loved home of the Harrogate Convention Centre, and with over 300 brands exhibiting, The Flooring Show 2024 is the ultimate destination for flooring professionals.



Find out more about what the show has to offer:

2024 EXHIBITOR LINE UP

The Flooring Show’s exhibitors span the breadth of the flooring industry, attracting manufacturers and suppliers of carpet, laminate, LVT, wood, vinyl, cork, grass, SPC, as well as underlay, adhesives, software, machinery and tools. The names that visitors know and love will be returning to support the three-day show, bringing with them new ranges across all types of flooring for the contract and retail markets. Suppliers include Abingdon Flooring, Adam Carpets, Associated Weavers, Ball & Young, Bostik, Cavalier Carpets, Cormar, COREtec Flooring, Kellars, Furlong Flooring, F Ball & Co, Hugh Mackay, Interfloor, Lifestyle, Likewise, Penthouse Carpets, Tarkett, Westex, Victoria Carpets & Design Floors, to name just a few.

Alongside the big names returning to the show, there are plenty of new names joining us this year including Floormart, Bjelin, T-Build Floors, Evolve Flooring, Fablon Fine Carpets & Rugs, Juvern, Peri UK, YB Fixings, Tuftco, Rinos, Alsa Flooring, to name just a handful.



DESIGN SPOTLIGHT

For years, The Flooring Show has attracted premium flooring brands, with Harrogate ranked the most exclusive place to live in Yorkshire and ranked in the top 25% most expensive cities in the world. Located in the newly accessed Hall Q, the Design Spotlight has been launched in response to the demand from architects, interior designers, property developers, and specifiers in search of the most unique, design-oriented residential and contract flooring solutions on the market.

Event Director, Alex Butler, says “The Design Spotlight is a feature

we’ve wanted to introduce for a couple of years now, and the expansion into Hall Q allows us to do just that. We want architects and interior designers to know that The Flooring Show caters to them as much as it does to our contractors and fitters.”

FITTER OF THE YEAR

This year NICF’s ‘Fitter Of The Year Competition’ returns with a focus on carpet and the competition will take place over the Sunday and Monday of the show. The winner will be announced at 4pm on Monday 16th and receives a cheque for £2000, a trophy and some great prizes including a selection of tools, and one year’s free NICF Master Fitter membership.



WOOL TRENDS CENTRE

The Wool Trends Centre returns this September. Located in Hall C, meet with brands that put wool carpet at the forefront, including Westex Carpets, Adam Carpets, British Wool, Cavalier Carpets, Brintons, Axminster Carpets, Brockway Carpets, Penthouse Carpets, and Ulster Carpets.



DEMO ZONE

As always, the Demo Zone, run by the Flooring Industry Training Association (FITA) and supported by the Contract Flooring Association (CFA) and National Institute of Carpet & Floorlayers (NICF) is back in Hall B to impart more wisdom on the latest techniques and insights into working with the newest products on the market, via their live demonstrations across the three days of the show.



REGISTRATION

Registration for The Flooring Show is now open, meaning you can secure your COMPLIMENTARY passes by heading to www.theflooringshow.com and complete the short form. This pass will give you fast track access to the show and let you skip the queue on arrival.

SHOW ESSENTIALS:

Dates: Sunday 15 - Tuesday 17
September 2024

Opening hours: Sunday 9:30-17:30
Monday 9:30-17:30
Tuesday 9:30-15:00

Venue: Harrogate Convention Centre, King's Rd, Harrogate, HG1 5LA

Entry: The Flooring Show is a trade-only event and is free for industry professionals. Register via the show website theflooringshow.com

THEFLOORINGSHOW.COM

   @TheFlooringShow

Image courtesy of Cormar Carpet Co.

REGISTER
FOR FREE
TODAY



THE FLOORING SHOW
15-17 SEPTEMBER 2024
HCC, HARROGATE

LIGHTING THE GREAT OUTDOORS

A living space outside of the home can reflect the same comforts and taste level as spaces within, so why not invest in making it the space you always wanted.

Whether it's a lounge area, dining space or the outdoor kitchen, our collection of outdoor lighting fixtures will enhance your curated space to the next level.

Pathway lighting

Be sure to light up your garden with pathway lighting to lead the way to a door or car in safety. Elstead Lighting has a great range of pedestals, bollards and lamp-posts to provide you with outdoor decorative lighting solutions, including fixtures suitable for saline coastal conditions.

Outdoor Ceiling fans and chandeliers

Over the last couple of years we have appreciated the luxury of having a garden more than ever, no matter how big or small, allows us to retreat in our own spaces and be surrounded by nature when the British weather allows. If you have a Pergola to provide a little shade, why not create a dining space with an outdoor chandelier or ceiling fan to hang from and make the most of a family gathering.



Portable outdoor lanterns with bluetooth speakers

Whilst enjoying a cosy meal or chilling out at the end of the garden where there is no electricity, light up one of our portable lanterns that have bluetooth connectivity so that you can enjoy your favourite music under a soft atmospheric lantern light.

Bringing your landscape to life

Elstead Lighting have a number of landscape lighting 12v products to bring your garden alive. Its never to late though to add landscape

lighting to a mature garden, so set yourself a challenge and create an underground map for your landscape lighting wires and see your garden in a whole new light.

Inspiration

For more inspirational ideas to light up your outdoor living spaces, visit the Elstead Lighting showroom in Alton, Hampshire where you will find more than 500 exterior lighting models on display. The variety of choice is unrivalled, and our staff are on hand Monday to Friday 9-5pm and Saturday 9-1pm.



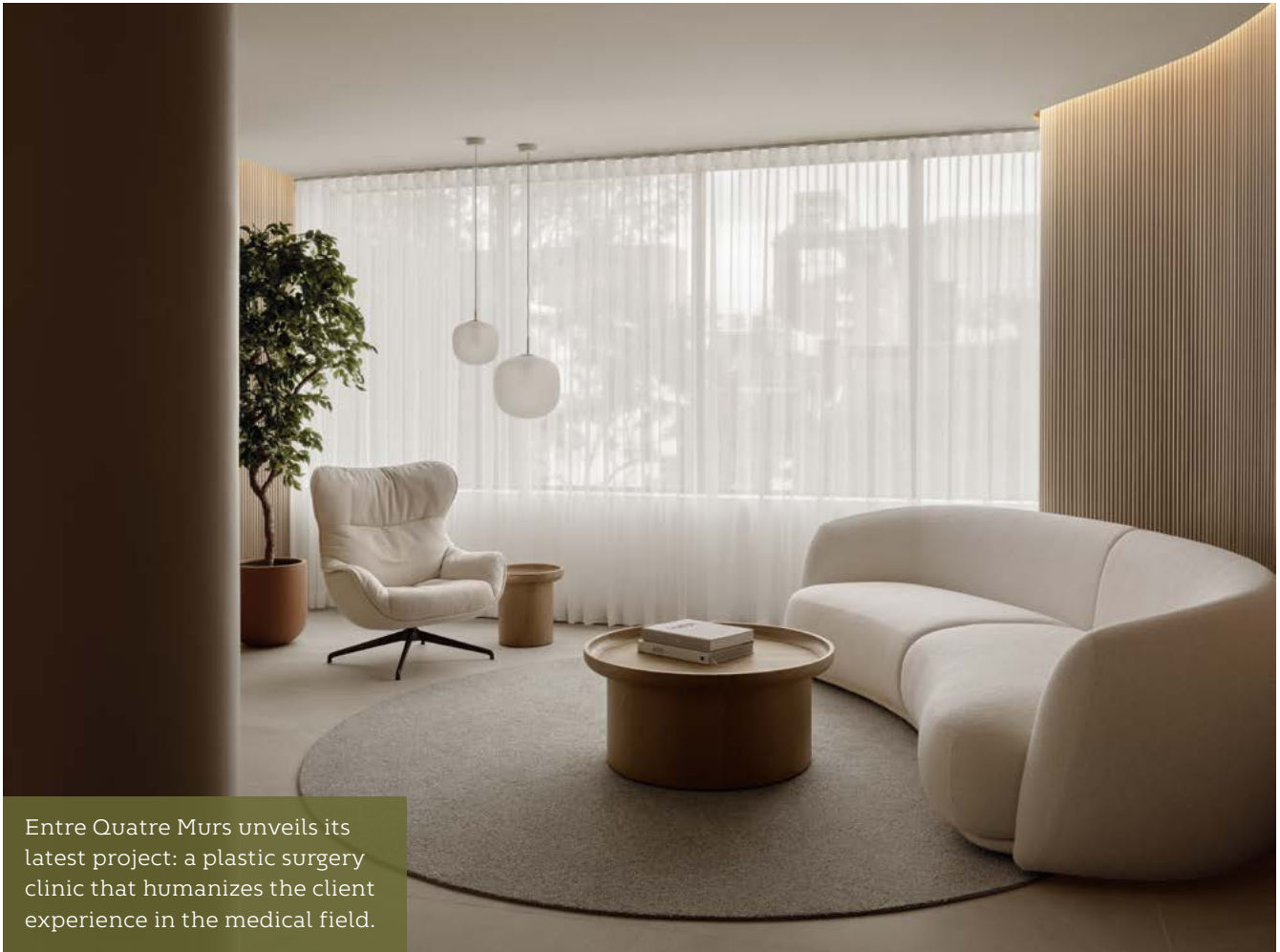
T: 01420 82377 | www.elsteadlighting.com

QN-ALFORD-PLACE-6P-MB
Quintesse Collection



LIPO MD

AN OASIS OF SERENITY



Entre Quatre Murs unveils its latest project: a plastic surgery clinic that humanizes the client experience in the medical field.

This mission was brilliantly accomplished by the designers, who developed this innovative concept imbued with organic inspiration. The result is a harmonious fusion of soft shapes, contrasting materials, and a soothing color palette.

AN EXTRAORDINARY SENSORY IMMERSION

Upon entering the space, visitors are welcomed by an interweaving of curved walls covered in ash slats, creating a warm and inviting atmosphere.



These curves, subtly reminiscent of the fluid lines of the human body, extend through the corridor leading to staff areas, conveying a sense of fluidity and movement that permeates the entire reception area where visitors wait.

A cube near the main entrance, clad entirely in bronze-colored metal panels, serves as a visually striking element in the space. Strategically placed to provide a striking contrast with the warmth of wood and delicate curves that surround it, this juxtaposition creates a unique visual balance, capturing visitors' attention upon entering the clinic, and guiding them toward the changing room, bathroom, and coffee area.

THE RIGHT BALANCE BETWEEN WELL-BEING AND REFINEMENT

"Our main goal was to create a calming and bright space that helps reduce the stress experienced by patients during their visit at the clinic," explains Pierrick Beaulieu-Wojtowicki, project designer at Entre Quatre Murs. "To achieve this, we made extensive use of natural light from the windows, and designed the spaces to optimize its distribution."



Soft tones and tactile textures were carefully integrated to establish an atmosphere of calm and well-being. The designers also aimed to transcend the traditional aspect of medical clinics by introducing furniture elements with organic shapes, evoking an atmosphere that is both comforting and refined.

"We aimed to design an environment that goes beyond the traditional medical aspect, creating an experience that soothes the senses and uplifts the spirit," adds Gatline Artis, the company's owner. "Every element, from curved walls to material choices, has been meticulously thought out to generate a unique synergy reflecting both the elegance of the space and the serenity it provides."

A UNIFORM AND CONSISTENT EXPERIENCE FOR ALL

With the well-being of all clinic users at heart, the team designed the medical zones and employee spaces to seamlessly harmonize with the overall project. The main objective was to create a cohesive experience for both patients and employees within the clinic. Even spaces traditionally perceived as sterile and unwelcoming, such as operating rooms, were designed with the intention of making the experience more humane. Administrative offices and the employee lounge also received equal attention to well-being and comfort, benefiting from generous natural light and integrating a palette of bright, soft, and warm materials.

This innovative project redefines standards in the medical field by offering a unique visual and sensory experience. Thus, this aesthetic medical clinic in downtown Montreal transforms into an oasis of serenity, transporting clients into a chic, elegant, and relaxing universe.

en.entrequatremurs.com

Photo credit: Alex Lesage

ILLUMINATE YOUR SPACE WITH HIGH END BRITISH MADE LUMINAIRES

At P&A Projects, we take pride in and dedication to the craftsmanship of our luminaires, which are all designed and manufactured here in the UK.

Over the last 20 years, we've supplied lighting for various projects, from residential to large scale commercial, and this dedication to providing high end British made luminaires remains unwavered to this day.

We understand that light is an essential element of life which influences architecture by defining volumes, visual appeal and textures. We want to go so much further by fostering sensations and emotions, so that lighting becomes a dialogue between people and whatever happens in the spaces they inhabit.

This is why we take pride in offering the ability to personalise all lighting products to your needs, whether this is in adjusting the lumen output, paint finish or optics, and all our products are meticulously manufactured to order.

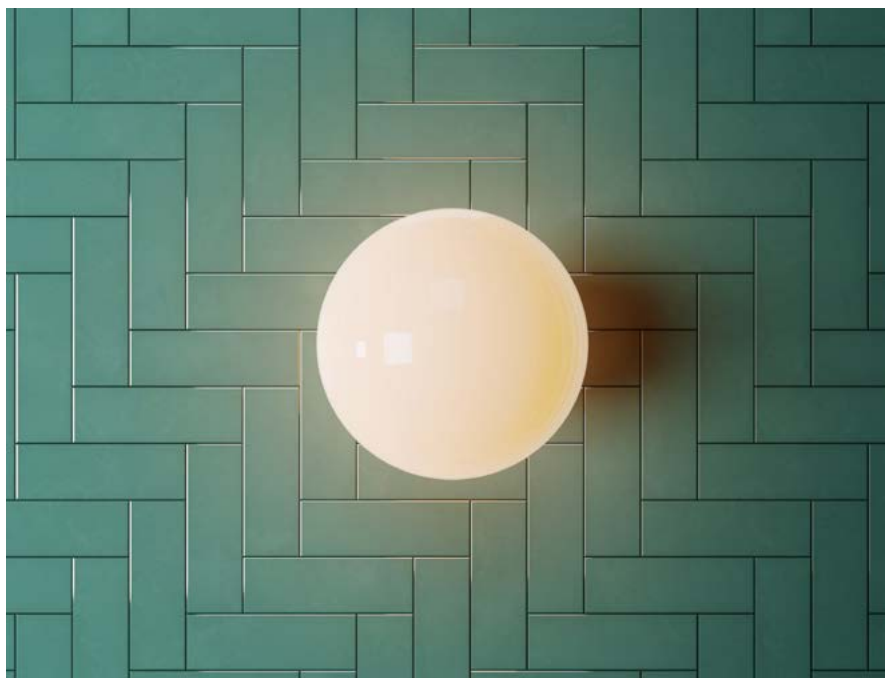
The TL by P&A is a collection of architectural slimline, tubular downlights, designed and manufactured in the UK by P&A. With their eye-catching minimalist design, the TL collection is perfect for illuminating your space. All fittings come with fine texture powder coated aluminium housing, available in a range of finishes. The collection is available in six sizes, and both ceiling and pendant varieties. The lighting technology in the collection is adapted for both home and public interiors.

The GL pendant and feature luminaire range, offers a timeless



design that complements both homes and offices. These versatile luminaires with their diffused round shade, made from polycarbonate shades and spun aluminium, give an ambient glow. Available in a wide range of sizes and finishes, its clean unobtrusive design makes them perfect for any space, adding a touch of sophistication without overwhelming the décor.

The HALO pendant is a contemporary architectural fitting, subtly suspended with adjustable suspension wires, that gives the illusion of the luminaire floating in mid-air. The luminaire is the perfect fitting to give your home a contemporary minimalist look, with its powder coated aluminium housing, available in a range of colours and finishes.



www.pandaprojects.co.uk

P&A



TL Collection.

A collection of stylish architectural
slimline, tubular downlights, designed
and manufactured in the UK by P&A.



www.pandaprojects.co.uk | sales@pandaprojects.co.uk



EAST MEETS WEST WITH NARA FOR A TRANQUIL, FUNCTIONAL BATHROOM EXPERIENCE



Achieve a bright and light Scandinavian aesthetic with opulent Oyster, chic Chrome or muted Brushed Nickel brassware to complement white sanitaryware and oak wood furniture. Or opt for Matt Black accents and walnut wood for a sultry, Japanese inspired vibe. Pair with a full range of wall-mounted accessories and complementary mirrors for the ultimate in pared back simplicity.

The Nara range also encompasses stone-effect floor and wall tiles, in four colours all with a luxurious matt finish. Crafted from porcelain, the tiles offer the perfect surface solution to turn even the busiest of bathrooms into a space of calm and relaxation.

Tap into the Japandi trend and create a restful bathroom environment with Nara, a beautiful new range from BAGNODESIGN.

Taking its inspiration from the interior design style that fuses Japanese and Scandinavian minimalist design, Nara is a complete bathroom collection with tranquillity at its core.

Influenced by the ancient city of Nara, Japan - where Edo architecture, enchanting temples and immaculate gardens merge tradition, nature, and spirituality - the range epitomises bathroom design at its most elegant and serene. Japanese simplicity and

appreciation for nature pairs with Scandinavian practicality, beauty and comfort for a relaxing and beautiful scheme.

Integrated with clever storage space, Nara offers a complete solution; from brassware and accessories to basins, BAGNOQUARTZ bathtubs, furniture, mirrors, tiles and lighting.

Clean lines provide the balance for a practical interior, while earthy tones and natural textures such as wood, bamboo and stone infuse a richness that could be extracted from nature itself, fulfilling the desire for organic elements to channel a spa-like setting. Iconic Japanese wood slat detailing appears on freestanding basins and furniture, and ultra-modern wall and pendant lights make a Scandi-style statement.



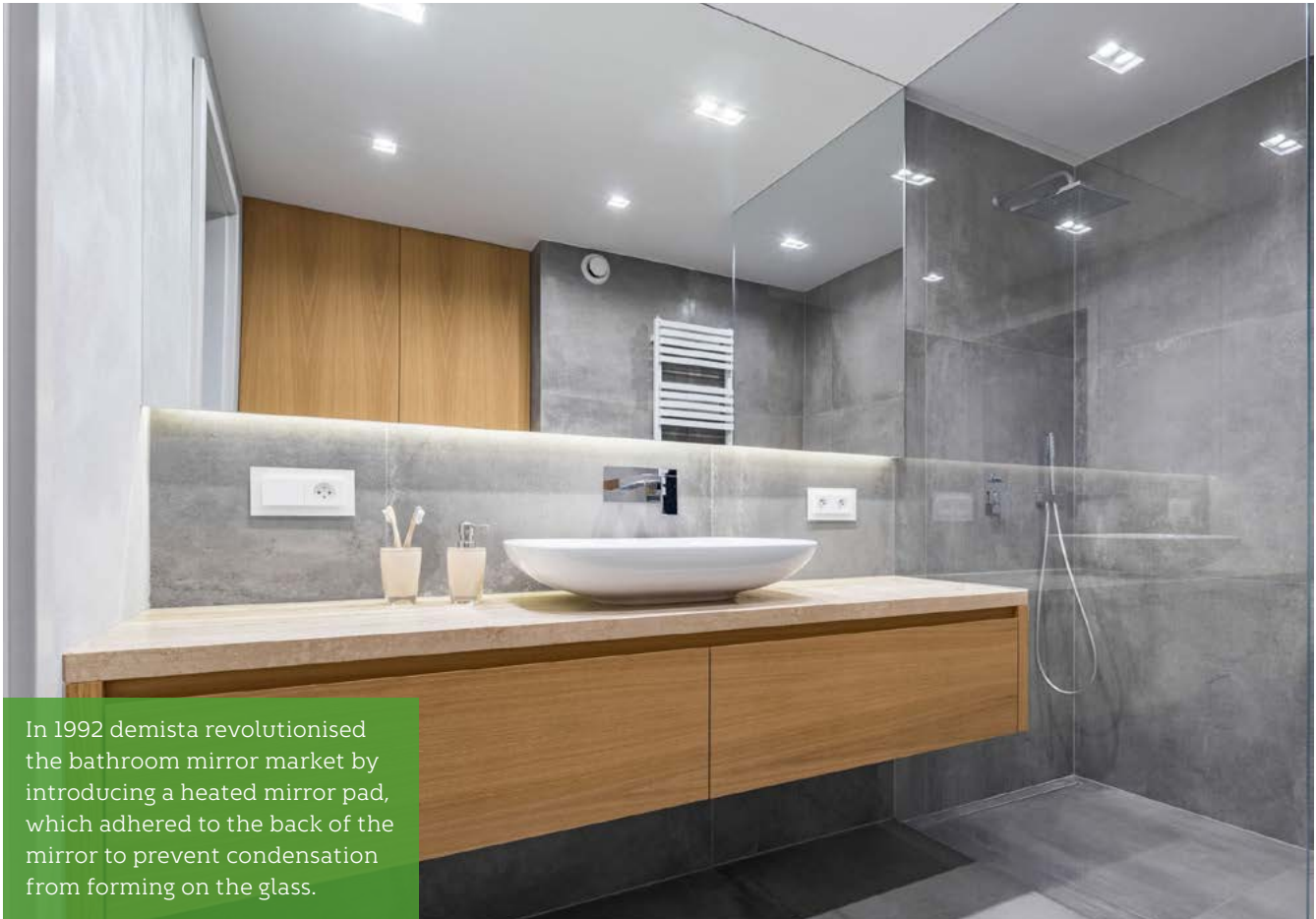
For more details, contact Sanipex Group on **01924 233977**
or visit www.sanipexgroup.com/uk

NARA COLLECTION



BAGNODESIGN

WWW.BAGNODESIGN.IT



In 1992 demista revolutionised the bathroom mirror market by introducing a heated mirror pad, which adhered to the back of the mirror to prevent condensation from forming on the glass.

REFLECTING HIGH STANDARDS IN BATHROOM DESIGN

The inconvenience and frustration of foggy mirrors was eliminated forever, giving a 'Clearly Perfect' steam free mirror, without the need for time consuming wiping or costly cleaning products.

demista has been proven and accepted nationally and internationally as the industry standard. Its unique reputation and unblemished track record has made it the number one choice for interior designers and specifiers of mirror defoggers for over 25 years. A product range that is available in a large range of standard sizes to suit almost any mirror and bespoke sizes can be supplied if required.

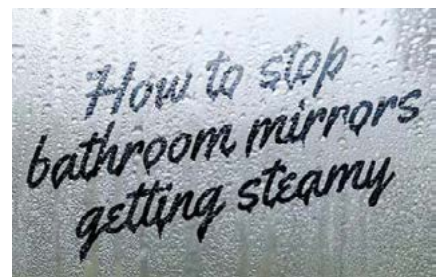
In addition to being a trusted name for heated mirror pads, demista also offers underfloor heating solutions,

which is Made in the UK, and offer clients a complete solution in bathroom design.

We've got everything covered!

demista products have been fitted in some of the world's most prestigious properties and hotel developments, including; The Burj Al Arab, The Royal Atlantis, Fairmont in Dubai, The Intercontinental O2 and other high value developments in London.

demista the original and trusted name for heated mirror pads and underfloor heating solutions throughout the world.



demista[®]
Clearly Perfect

To find out more please visit www.demista.co.uk



Telford Road
Glenrothes
Fife KY7 4NX

T: +44 (0)1932 866 600
F: +44 (0)1932 866 688
E: sales@demista.co.uk

demista.co.uk

DESIGN LEGENDS

EXCLUSIVE CURATED PIECES BY ICONIC INTERIOR MASTERS

Highly curated Capsule Collections carefully edited in partnership with worldwide leading designers and handcraft by skilled master artisans.



Patagon Round Dining Table



oasis for relaxation and leisure. In physical geography, a steppe is an ecoregion characterized by grassland plains without trees apart from those near rivers and lakes, another very familiar landscape in Patagonia, which served as the inspiration for the natural curves and shapes of this piece.

Dine in style with the Patagon Round Dining Table, a masterpiece of contemporary elegance. Its sleek lines and impeccable craftsmanship create a sense of refinement and sophistication, making it the perfect centerpiece for memorable gatherings and intimate dinners. The round dining table culminates the inspiration for the overall Patagonian collection. The interesting and unique foot of the table, with little globes representing each archipelago, glacier, landmass, and city in the Patagonian region. A circular Patagonia marble top is part of this homage, while the champagne lacquered foot represents the region's individuality and natural beauty.

Step into a world of timeless elegance and unparalleled craftsmanship with the unveiling of "Design Legends," featuring exclusive pieces, designed by iconic interior masters. Celebrating the rich legacy of design innovation, these pieces showcase exquisite works of art that embody sophistication, style, and uncompromising quality. Each item is a testament to the enduring legacy of its creator, offering discerning homeowners the opportunity to bring a touch of design history into their own spaces.

From Patagonia capsule collection, developed by Covet House, Steppe armchair is a comfortable and appealing seating piece, upholstered in a soft moss



Steppe armchair

green velvet and a subtle metal champagne foot. With its sculptural form and sumptuous upholstery, it offers a perfect balance of style and comfort, creating an inviting

Lange Dining Chair



Complete your dining ensemble with the Lange Dining Chair, conceived by Greg Natale. Atimeless classic that exudes sophistication and charm. With its graceful curves and impeccable detailing, it adds a touch of elegance to any dining room while providing unparalleled comfort for hours of dining pleasure. The curved armrests are both fashionable and comfortable and will complement any modern dining table. Lange features elegant materials such as luxurious cream velvet and polished brass details and positions itself as a staple in a dining room.

How much space an object or substance takes up many times defines its impact in an environment. Make a bold statement with the Volume Chair, designed by Masquespacio. Its sculptural silhouette and dynamic

Volume Chair



presence command attention, infusing any space with a sense of drama and flair that is sure to leave a lasting impression. The Volume chair, although with its huge and unreal mass, is the stand-out piece in any interior design that will catch your attention from far away.

Elevate your dining experience with the Anjelica Oval Dining Table, a vision of timeless beauty and elegance. It's part of our Modern Essentials collection from Greg Natale. With a sleek silhouette and exquisite craftsmanship, Anjelica creates a sense of grandeur and sophistication that transforms any dining room into a luxurious sanctuary. This piece features an ash wood structure with a matte varnish finish, a tabletop in White Vogue Estremoz marble, legs in Nero Marquina marble, and some elegant details in polished brass.

The Dovedale Stepping Stones are a beautiful feature in the Peak District and a declared National Nature Reserve of UK. Created by Ptang Studio, Dovedale Center Table is a stunning masterpiece that captures the essence of modern luxury. Crafted with precision and attention to detail, its geometric design and sleek silhouette make it a striking statement piece that elevates any space with its undeniable allure. With two different carved hardwood legs, this modern center table brings the ceramic stone with a tempered glass top, emerging a contemporary designed piece.

www.covetcollection.eu

Images: COVET COLLECTION

BEAUTIFUL POTS **AND PLANTERS**



Torc make everything from their studio in the British Isles creating beautiful pots and planters to enhance any outdoor (or indoor) space.

TORCPOTS

Working alongside a talented team of artisans this family run business really specializes in textures, scale and especially bespoke design. Their pots are shaped by hand until they take on their own unique form - no two pots are ever quite the same. When we are surrounded by so much that is mass produced Torc believe there is a real appreciation for hand-crafted objects.

The design side of their business is getting busier all the time with landscape architects and garden designers alike realizing just how much expertise this company has to offer with a wealth of experience in design and problem solving to bring to the table. Torc welcome the opportunity to be involved at the design stage and are happy to contribute ideas when requested. Frequently being commissioned to provide planter designs and outdoor furniture as a one-off

template for both commercial and residential spaces.

Launching their new contemporary shaped water bowl this month was a good example of how far they can go - the diameter of this piece can be offered up to 3m wide. Their green credentials are pretty impressive too.

www.torcpots.com

TORC:POTS



CHIC TEAK



www.chic-teak.co.uk

sales@chicteak.co.uk | 01256 398008

TIMELESS TEAK FURNITURE. TREASURED FOR GENERATIONS.



Crafted from the finest Indonesian heartwood teak, our collection is effortlessly stylish whilst being brilliantly practical and durable, to suit every outdoor space.

GRADE A HEARTWOOD TEAK

To ensure perfection, each teak component is hand selected. All of our teak is sourced from sustainable plantations owned and certified by the Indonesian Government.

DELIVERY

Most products can be delivered from stock within 2 weeks. All furniture is delivered fully assembled by our own team.

BESPOKE SERVICE

We can adapt most of our collection to your specifications. We can also work with you to create a truly bespoke piece of teak furniture.

25 YEARS EXPERIENCE IN TEAK

We are truly passionate about teak and the quality of our products. It's not just the wood, but the joints, the fixings and the finish too.

TRADE DISCOUNTS

Available over a rolling 12 month period.

FIRST CLASS CUSTOMER SERVICE

5* Feefo rating because we go the extra mile.

BOOK AN APPOINTMENT

Visit our Hampshire showroom and one of our expert team will show you around.



SHH HARMONIZES HISTORIC CHARM **WITH CONTEMPORARY LUXURY LIVING**



Historic Home, undergoes a transformative restoration which breathes new life into its notable past.

SHH has meticulously renovated a distinguished Grade II listed stucco-fronted house, by preserving all its original features while seamlessly blending historic charm with contemporary luxury. The residence boasts a prime location overlooking the Lords Cricket Grounds and is steeped in history, dating back to 1846 when it was associated with the political economist Thomas

Sharpe Smith. Later, it became the residence of Woodrow Wyatt, a notable Labour MP and journalist who hosted several dinners attended by Margaret Thatcher.

Katie Anson Senior Interior Designer says, "our aim was to merge historical elegance with modern comfort and to deliver a cohesive and inviting living space that accommodates both formal gatherings and the everyday activities of a bustling household.

Each room tells a unique story, curated to evoke a sense of timeless sophistication".

Upon stepping into the residence, a captivating pendant light graces the entrance hall, setting an elegant tone for the entire space. To the right, the formal reception room unfolds, showcasing a timeless layout with sofas, side tables, and a centrally positioned marble fireplace framed by exquisitely crafted bespoke cabinets from SHH. This area serves as an ideal backdrop for formal gatherings.

In contrast, the family living room on the left exudes a more relaxed ambiance. Here, carefully arranged accent chairs surround a bespoke circular sofa inspired

by Vladimir Kagan's Serpentine Sofa, complemented by Danish poofs that contribute to a social and visually engaging atmosphere. Adjacent to this laid-back setting is an elegant tall toy cabinet which stands alongside an oval Scallop-designed dining table by Charles Orchard.

The lower ground floor is thoughtfully designed to combine sophistication and warmth. On the left side of the hall, is the formal dining room where the walls adorned with tasteful wallpapered panels and complemented by decorative gold lights add an extra layer of elegance. The focal point of the room is a bespoke dark oak dining table with an inset Eglomise mirror top, impeccably crafted by Stuart Fox Studio. This centrepiece has been cleverly positioned to reflect the radiant chandelier above, infusing the space with light and a sense of warmth. Flanking the Carrara fireplace on either side are tall dark walnut cabinets, skilfully designed by SHH and enhanced with liquid metal panels from Anka Bespoke.

On the same level, the family kitchen/dining area forms the heart of the home. Vibrant red accents add warmth and energy while modern appliances are cleverly concealed to create a clean and inviting atmosphere. A central island serves both as a hub for food preparation and casual dining and the adjoining dining area creates an inviting setting for gatherings with family and friends.

The lower ground floor layout is meticulously designed to offer easy movement and connectivity between the formal dining room, the family kitchen/dining area, and a cosy study for quiet contemplation or focused work. This well-designed space includes a leather-topped desk, and bespoke timber joinery with open shelves with brass inlay, providing an elegant display area for a curated collection of literature and art.



Moving upstairs, the master bedroom boasts a large bay window and traditional glazed doors that open onto a balcony with views of the landscaped garden below. The headboard serves as a focal point, adorned with intricate porcelain flowers inspired by nature and handcrafted by Art Et Floritude, contributing to the overall aesthetic. A delicate central pendant light hangs from above, casting a soft glow that enhances the room's ambiance. Additionally, pendant lights positioned beside the bed contribute to the warm lighting in the room.



On the second floor, there are three children's bedrooms, each designed individually to suit the aesthetic and preferences of each child. The house also features a generous basement that houses two guest suites, a sensory playroom, a gym, and a swimming pool.

TOUCH

IRONMONGERY LTD



www.atouhofbrass.co.uk

210 Fulham Road, Chelsea London SW10 9PJ

CELEBRATING 40 YEARS

One of London's leading Architectural Ironmongers

Originally called "A Touch of Brass", TOUCH changed their name in 2003 in reaction to advancing market changes in architectural Ironmongery to reflect the broader range of products and finishes that they sell.

In fact today Touch supply 20 different finishes including Brass, Satin Brass, Polished Chrome, Polished Nickel, Satin Nickel, Copper, BMA, Antique Brass, Black, Pewter, Ceramic, leather, Stainless Steel, Satin Stainless Steel, Gun Metal & 4 different shades of Bronze and the list keeps growing. Whatever finish you require, Touch can help you get the right look.

Touch occupy their recently refurbished showroom at 210 Fulham Road, Chelsea, where they stock and display a vast range of their 5,000 products. With a customer base including Architects, Interior Designers, Builders and private Individuals who are interested in the quality end of the Ironmongery market, the company also have a healthy export market to all corners of the world, namely the Middle East, Europe and the Americas.

Touch Ironmongery's owner and founder, Bill Benham, has 42 years' experience in the Ironmongery trade, as does his colleague Jim Haselup. Saleem Qureshi is the newest member of our team and has 21 years' experience, meaning their knowledge is unrivalled in this industry.

The range of products supplied by Touch date from circa 1640 French (Louise XIV) and cover all subsequent periods (Georgian, Edwardian & Victorian), Art Deco and contemporary pieces also make up the product ranges.

Touch showcases the very best of British manufacturing; the best ranges are still produced in the Midlands by craftsmen in factories dating back 200 years or more.

Touch Ironmongery have recently become suppliers for **Designer Doorware (Australia)** Who have beautiful products with a cutting edge design Metal, Wood and concrete. We also have the exclusive rights to sell the **Olaria (Barcelona)** range in the UK.

Olaria make all our bespoke products, they have incredible levels of workmanship.

Touch also sell European manufactured goods which are considered to be of a very good quality.

With trends continuously evolving new and innovative products are constantly under development.

Touch understand that keeping up with the fashion-shifts is imperative in order to provide every customer with the best solution for their requirements.

Ironmongery can be a difficult and complicated aspect of a building project, as a result Touch aim to take this awkward aspect and make it user friendly and clear to understand by offering an on-site service where they carry out a detailed door by door, window by window, room by room Ironmongery schedule, highlighting all requirements and identifying all requirements.

Restoration is a large part of the business Touch will undertake complete Ironmongery refurbishment projects, and can restore old paint covered door furniture to their former glory, looking as good as new again at a fraction of the cost to replace.

For more information about Touch Ironmongery or to arrange a showroom visit please call 0207 351 2255 or alternatively visit www.atouhofbrass.co.uk



BRITISH & EUROPEAN MANUFACTURERS SUPPLYING THE FINEST QUALITY IRONMONGERY

Touch combine traditional skills with modern manufacturing techniques to produce the most beautiful, quality fittings, built to stand the test of time.

As well as specialist bespoke items, Touch supply over 1000 products, available in 23 different finishes to furnish high end residential and commercial properties, royal palaces, government houses, historic castles and stately homes.

Olaria, available from Touch Ironmongery

www.atochofbrass.co.uk
& www.olariabarcelona.com



INTRODUCING NEW COLLECTIONS FROM TILE OF SPAIN



Pioneering products crafted with meticulous attention to detail, Tile of Spain is delighted to share new tile collections from a selection of its ceramic tile manufacturers.

From contemporary brick tiles to rustic detailing, each of the new ranges shows a commitment to excellence and a passion for pushing design boundaries to offer incredible products for both walls and floors.



Varenna by Decocer - Specialists in small tile designs, Decocer's new Varenna range is the embodiment of Mediterranean style offering customers two sizes, 10cm x 40cm in a gloss finish and 5cm x 25cm in a matt finish, in two organic colourways: Natural and Cream. Authentically nature-inspired and pared-back, the collection is suitable for walls and floors.

Musa by Bestile - Exquisitely textured and rustic, the new Musa range by Bestile is a

collection of nine nature-inspired shades, ranging from neutral Blanco to Antracita grey. A classic brick tile in a 6.5cm x 20cm format, with a shiny, gloss finish and distressed aesthetic, the porcelain tiles can be used on both walls and floors.

FS Nouveau by Peronda - The charm of rustic décor combines with modern functionality in the form of the new patterned FS Nouveau collection from Peronda. Available in two captivating colours, Ruby and Sage, in a 45cm x 45cm size, the eclectic designs blend classic elegance with a nod to the beauty of Mediterranean design.



www.tileofspain.com

INTERIOR WOOD FINISHES

Sustainable, plant-based, natural, and Eco-friendly are some of the terms we use to describe our products. This is due to the 5 core natural ingredients within our products, that create our high-performance wood finishes.



Highly Repellent



High Coverage



Breathable



Natural Ingredients

www.osmouk.com

osmo



Sunflower Oil



Thistle Oil



Soya Oil



Candelilla Wax



Carnauba Wax



 BROWN ALSO AVAILABLE BLACK, GREY, BURGUNDY, CREAM £47.99 1970	 £23.99 2526	 £47.99 0069	 £44.99 8015L	 BROWN £67.99 1971	 GREY SLATE/MARBLE EFFECT ROUND & SQUARE £59.99 SLATE/MARBLE EFFECT
 CHESTERFIELD SOFA £225.00 Sale PRICE!	 £47.99 0007	 WHITE MARBLE WITH GOLD TRIM £66.00 MARBLE	 OUTDOOR CHAIR £47.99 FRENCH STYLE	 COMPLETE TABLE £64.99 SINGLE 3417	 COLOURS AVAILABLE BROWN, BLACK, GREY, BURGUNDY, CREAM £77.99 1933
 AVAILABLE IN WALNUT £67.99 0068	 BROWN £96.99 1938	 BROWN £54.99 1927	 TABLE TOP AND BASE £71.99 POSEUR	 DOUBLE TABLE & BASE SET £94.99 DOUBLE 3421	 £79.99 2838
 £78.99 1934	 BLACK MARBLE WITH GOLD TRIM £66.00 MARBLE	 £49.99 1898	 ORANGE £47.99 1970	 BLUE £47.99 1970	 £57.99 1914
 £57.99 1925	 £52.99 0042	 £49.99 2225	 STACKING CHAIR INCLUDING SEAT PAD £31.99 CHIAVARI	 YELLOW £47.99 1970	 £44.99 7874
 £39.99 7456	 £84.99 7699	 £219.99 6 SEATER TRIANGLE BENCH	 £249.99 ROUND PICNIC BENCH	 £129.99 6 SEATER BENCH £149.99 8 SEATER BENCH	NEXT DAY DELIVERY AVAILABLE
 SINGLE SQUARE BASE £68.99 BLACK MARBLE	 SINGLE SQUARE BRUSHED METAL BASE £88.99 WHITE MARBLE	 SINGLE ROUND BRUSHED METAL BASE £88.99 DARK LIGHT WALNUT	 DOUBLE RECTANGLE £114.99 BRUSHED METAL BASE WHITE MARBLE	 ROUND/ SQUARE BASE £69.99 INDOOR OR OUTDOOR GREY SLATE BISTRO	

www.RegentCHAIRS.co.uk

Open from 7.30am - 9pm 7 days a week

Open from 7.30am - 4pm Monday - Friday

Tel: 07946 757420

Tel: 01159 223300

Email: info@regentchairs.co.uk



BESPOKE TIMBER WINDOWS AND DOORS **IN HERTFORDSHIRE**

The Sash Window Workshop specialise in high quality, traditional timber windows and doors. They offer a supply only service nationwide, with installation in London and Southern England.

The company were contacted for a project in Hertfordshire. The customer wanted to complete the work over multiple stages.

The initial work involved installing new double-glazed sashes into existing window frames. The customer was happy and placed additional orders to replace the sashes in several windows and completely replace two sash windows, the front door, and a French doorset.

The new joinery was manufactured in the company's UK workshops to exact requirements. This was especially important for the sashes and the highly bespoke French doorset.

After the work was complete, the customer said they would recommend The Sash Window Workshop, noting the work was "first class service in all respects." They also commented that the French doorset "was a very difficult job both to measure and construct, and it all went perfectly."

The Sash Window Workshop have extensive experience working on a variety of period properties. They can also comply with Conservation Area and listed building regulations.



The company uses high quality materials that give the best possible performance, combining minimum maintenance with maximum lifespan. They use Accoya as standard, which is known for durability and stability, and comes with a 50-year anti-rot guarantee.

For a quotation, contact The Sash Window Workshop on **01344 868 668** or email **info@sashwindow.com**.
You can also visit their website: **www.sashwindow.com**.



Traditional Timber Windows and Doors

*High quality, energy efficient timber windows and doors.
Conservation Area specialists. Supply only, supply and install,
secondary glazing and draught proofing.*



01344 868 668 **www.sashwindow.com**



**THE SASH
WINDOW
WORKSHOP**

Beautiful Designer Ceiling Fans



Stylish - Reliable - Silent



THE HENLEY FAN COMPANY LTD



01256 636 509
www.henleyfan.com

UNIQUE, FLEXIBLE AND ADAPTABLE



balance the requirements of the organisation with a workforce that is looking for a range of work environments and settings, product and space use are no longer the key drivers, they are simply two factors that must be considered.

The essence of any interior design project is embracing the brief and fully understanding the parameters of any project to evolve a holistic solution that pushes all the boundaries, this is fundamental to the projects that Ci3 deliver.

Workspaces have to be unique, flexible and adaptable.

Ci3 offer a complete service for all aspects of commercial office interiors, from design to alterations and furnishing.

Ci3 believe there is No One Answer, the design of any workspace large or small, now more than ever must respond to many diverse and evolving needs. Workspaces must

We are happy to talk to you about any future requirements you have.



solutions@c-i-3.com
01795 905383 | www.c-i-3.com

STONeworld

Stoneworld is a family-owned business based in Great Milton, Oxfordshire with a state-of-the-art masonry workshop where our stone products are meticulously crafted using cutting edge technology. Here, our skilled team utilizes the latest technology to bring your dream design to life, whether its bespoke stone cutting or intricate designs using natural stone and porcelain, sourced both internally and externally.

Our commitment to technological advancement ensures precision and efficiency, meeting even the most ambitious architectural, sculptural, or landscaping needs.

Recently, we attained certification for ISO 9001 and 45001, international

standards for Quality Management and Health and Safety. This underscores our dedication to customer satisfaction, guaranteeing that every stone product and masonry service meets rigorous global standards, embodying reliability and excellence. For our team, we prioritize a safe and secure work environment, fostering responsibility and safety throughout the organization.

When you choose Stoneworld, you're not just selecting a supplier; you're partnering with experts who share your values of quality, safety, sustainability, and all-around excellence.



For further information visit www.stoneworld.co.uk

STONeworld

SCAN ME

BESPOKE MASONRY SERVICES

STEPS | COPINGS | PIER CAPS | SCULPTURE
PAVING | WALLING | FLOORING | STAIRCASE

www.stoneworld.co.uk (01844) 279 274 sales@stoneworld.co.uk



01

MILES BISHTON

Miles Bishton has been painting and drawing since his school days. When leaving comprehensive he started a job at a purpose made wood work company and completed his five year apprenticeship as a wood machinist. In later years he became a self taught furniture maker and most of his work was creating bedroom furniture. When getting back into painting he began to develop a style with women figures and tall buildings, and today carries on with that same theme.

If you would like to see his work please visit www.bishtonart.net.

02

CHELTENHAM INTERIORS

Isabel Jackson is a third generation designer and the founder of Cheltenham Interiors, a boutique interiors studio serving clients throughout the Washington, DC metro area. Isabel has an undergraduate degree in Art History from University College London, UK and a Masters in Interior Architecture from the George Washington University, the 9th highest-ranked national university offering interior architecture which is housed within the Corcoran Art Gallery in Washington DC.

Isabel worked with renowned DC designer Kelley Proxmire who is a sought-after practitioner. Kelley worked under Billy Baldwin, the renowned grandfather of Interior Design. Additionally Isabel worked at an international architectural firm in DC and is passionate about how great design changes lives since people who feel good in a space feel better about themselves as a result. Her multicultural exposure combined with her previous residencies in Italy and Dubai inspire diverse aesthetics, crafting personalized living spaces that evoke joy and unique narratives.

**www.cheltenham-interiors.com
email:
info@cheltenham-interiors.com
cell: 202.999.9910**

03

TINKERBELL & FAIRYDUST

For lovers of truly outstanding handcrafted sculpture bowls and bespoke homeware & wall art, make a beeline for Broxbourne based luxury homeware store, Tinkerbell & Fairydust; winner of The Prestige Award for 'Best Luxury Homeware Store' 24/25 for London and the Southeast. Specialising in handmade multi-purpose sculpture bowls, this exceptional brand is dedicated to adding a touch of magic to every home, offering products that each tell a story of craftsmanship and individuality. Using only the finest materials, each piece is meticulously crafted using UK manufactured epoxy craft resin, renowned for its quality and reliability, food-safe, heat-resistant and UV stable, ensuring longevity and durability. Whether looking for a statement piece for your home, or the perfect gift, Tinkerbell & Fairydust offers an unparalleled selection. With a focus on one-off designs, every bowl and wall art is a unique work of art designed and crafted by Tinkerbell & Fairydust's owner/artist, Maxine Padalino, bringing her unique & imaginative ideas to life, impossible to replicate. This commitment to exclusivity means you're investing in an item of true craftsmanship, tailored specifically to elevate your living space.

**07961 197 666
hello@tinkerbellaandfairydust.co.uk
www.tinkerbellaandfairydust.co.uk
Etsy shop: [tinkerbellaandfairydust](https://www.etsy.com/shop/tinkerbellaandfairydust)**

04

CUSTOM CARPET COMPANY

A family run business with more than 40 years experience in producing custom made carpets and rugs for luxury homes, boutique hotels and superyachts.

With a diverse range of products within our portfolio, we can supply all types of custom made carpets and rugs in wool, silk, tencel, bamboo and blended yarns.

We have specialist knowledge in many methods of manufacturing including handtufting, woven, handknotted and passmachine constructions.

Our team offer a comprehensive service, meeting with designers and clients, advising on colour, pile fibre and manufacturing techniques to achieve the perfect design solution.

We are able to deliver and install world wide to ensure seamless project management throughout.

**Custom Carpet Company,
The Brickworks, Lynwick Street,
Rudgwick, Horsham,
West Sussex, RH12 3DH**

**Tel +44 (0) 1737 830301
info@customcarpetcompany.co.uk
www.customcarpetcompany.co.uk**



05 SPACEMADE

Spacemade, the unique coworking operator, launches its first townhouse offering in Marylebone Village.

Spacemade, the B-Corp organisation ahead of the curve in designing and curating exceptional workspace offerings, has launched its brand-new and exclusive location, 'Elmtree', in the heart of Marylebone Village.

In partnership with The Howard de Walden Estate, Elmtree at 34 and 36 Queen Anne Street is a unique townhouse style office group aimed at small to medium sized businesses and those looking to elevate their coworking experience.

The striking Grade II listed Georgian property, features original artworks and murals and mixes timeless design with an eclectic twist.

Elmtree has been designed to revive the traditional coworking offering. Whether you're in need of a private office to create a collaborative environment for your growing team, or a flexible hot desk, they offer bespoke memberships for all.

To find out more about Elmtree, please visit the website: www.spacemade.co/locations/london/elmtree/

06 LOTS ROAD AUCTIONS

Since 1979, Lots Road Auctions has been a firm favourite for interior stylists and private collectors around the globe. The carefully curated mix of antiques and contemporary items; from fine works of art to mid-century furniture; modern designer pieces; designer handbags and luxury goods ensures that there is something for everyone to get excited about.

Now housed in the iconic Piper Building in Fulham, Lots Road Auctions is one of the largest single space auction houses in the country. Auctions are held every Sunday from 11am.

Consignments are invited for their forthcoming auctions and enquiries can be sent to valuations@lotsroad.com.

Details of viewings, deliveries and collections can be found on their website.

www.lotsroad.com
0207 376 6800



07 FENWICK & TILBROOK

Small, family-run paint company, Fenwick & Tilbrook create pigment-rich, premium paints in Norfolk. The brand centres itself on offering customers, interior designers and discerning trade professionals a beautiful range of colours, whilst not compromising on durability.

Made-to-order and delivered next working day to most parts of the UK, the extensive palette is available in six beautiful finishes including a highly breathable Claypaint for lime plaster.

Available in over 150 colours, the hero product is Pure Matt Plus - a flat matt emulsion (3% sheen) that achieves a class 1 scrub rating whilst containing minimal VOCs.

Website:
www.fenwickandtilbrook.com

Instagram:
[@fenwickandtilbrook](https://www.instagram.com/fenwickandtilbrook)

Tel: 01362 684 125

Email:
sales@fenwickandtilbrook.com

08 GEORGE JACKSON LIMITED, LONDON

In 1780, George Jackson revolutionised the UK market by introducing composition enrichments. Today, we are a leader in specialist plasterwork, offering a comprehensive suite of services encompassing design, manufacture and installation.

Our distinct expertise is concentrated in decorative ceilings, fibrous plaster, GRG, Composition and Sculptural artwork. We take pride in our rich heritage whilst remaining progressive by prioritising health and safety, utilising the latest available technologies and working efficiently within budgetary constraints.

Our unique collection of reverse-cut hardwood moulds is one of the largest in the world, totalling approximately 11,000 patterns, which architects and interior designers use as a source of inspiration when developing their design. We welcome visits to our London showroom and workshop, where our unparalleled history and craftsmanship can be demonstrated.

www.georgejackson.com
02086879740
enquiries@georgejackson.com
Instagram: [georgejacksonltd](https://www.instagram.com/georgejacksonltd)



UPTOWN GEORGIAN ASHLEY BOTTEN DESIGN REVIVES A HISTORIC TORONTO HOME

Ashley Botten Design presents an interior renovation that infuses heritage architecture with modern living.

Home to a family of six, the Georgian-style residence was recently expanded to extend the kitchen and a primary bedroom and ensuite bath on the second floor. The clients wanted to preserve some of the original details, including elegant crown molding, Cremona bolts, and French doors, while adding a new layer of contemporary expression. With four grown children and two dogs, they also required the house to be easy to live in and maintain.

The interior places much of its emphasis on the experience of space, and on an overall earthy scheme consisting of white and brown marble, grey limestone, raw copper, and the quiet softness of smoked white oak used on the floors and built-in cabinetry.

Abd paid close attention to blending its own custom furniture designs with new additions and the clients' existing pieces. In the dining area, the family's vintage Eero Saarinen tulip chairs are now surrounded by a complementary oval dining table by Yabu Pushelberg. In the living room, an abd-designed mantelpiece, made of limestone, echoes the geometry of the room's traditional door casings and moldings.

One of the boldest expressions of old meeting new is experienced in a deep entryway leading from the formal front rooms to the newly expanded kitchen and adjoining family room. The unique transitional space is now clad in live copper on all sides, with a slightly protruding edge providing a minimalist framework.

On the second floor, the warm palette continues within the primary bedroom, walk-in closet, bathroom, and office. The finishing details here are no less discrete, quietly woven into the visual rhythm of the house. Rather than matching hardware, door pulls, knobs, and hinges are a mix of shapes and warm metals, with abd's own T-bar in polished brass featured on one set of dresser drawers, and in contrast to the linear finger pulls chosen for another custom sideboard. The pure intention of these inconsistencies gives the home a timelessness ambiance that transcends trends. The aim is for every element of the house to be enjoyed in the here and now, and also last a lifetime.

www.ashleybottendesign.com

Photography: Patrick Biller

THE ART OF DESIGN

LUXURY HOME INTERIORS



Every Issue of The Art of Design magazine brings together a varied range of editorial and feature content that you will not see anywhere else, from Beautiful Homes, Boutiques, Hotel Design, & Luxury Lifestyle.

"Exceptional Designs for Exceptional Spaces"

FREE DIGITAL MAGAZINE SUBSCRIPTION

Subscription enquiries:

Call - 01304 806039
editor@mhmagazine.co.uk

Advertising enquiries:

Courtney Yorke - 01227 936976
courtney@theartofdesignmagazine.com

Editorial submissions or enquiries:

Antony Holter - 01304 806039
editor@mhmagazine.co.uk



SUBSCRIBE TODAY!

COACH HOUSE

www.coachhouse.com / [@coachhouseuk](https://www.instagram.com/coachhouseuk)

