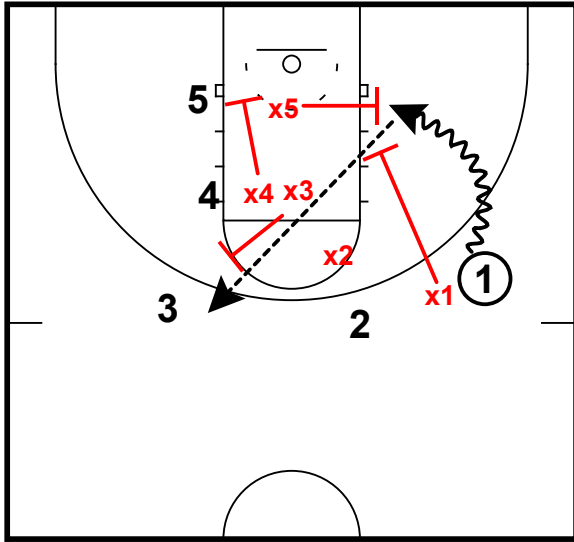


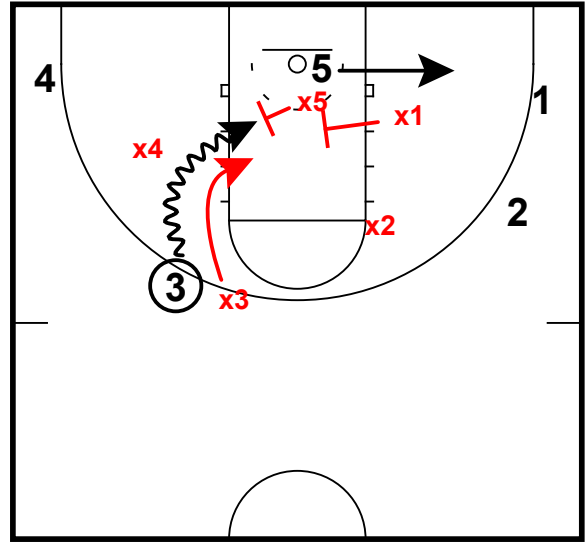
Texas Tech vs TCU

No Middle/Charge



- X5 rotates over to help on baseline drive
- X4 cracks down to cover 5
- 1 kicks out to 3 at top of key
- X3 closes out on shooter and forces the drive

No Middle/Charge



- X3 takes away middle drive and forces ball handler to the baseline
- X5 rotates over to take the charge
- x1 helps the helper