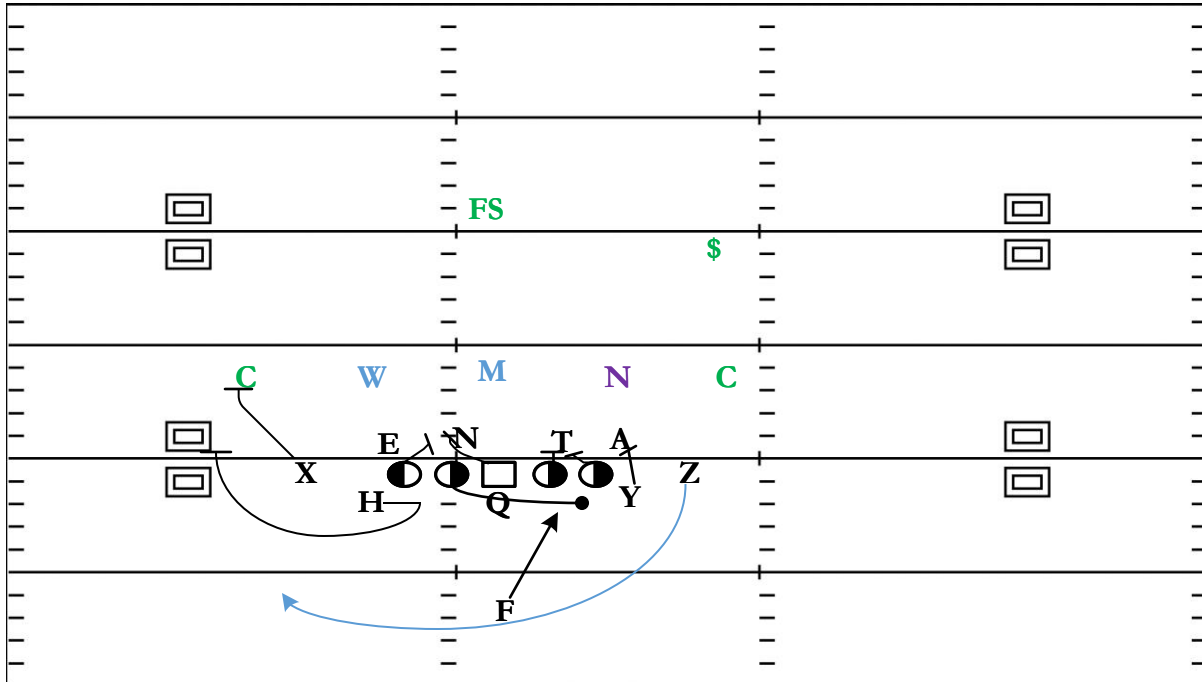


# 2x2 Ace Tite: End Around

QTR	TIME	D & D	YD LINE	HASH	SCORE
1st	10:23	1 & 10	16	LM	0 - 0



**STRATEGY:** Condense your formation to condense the defense before attacking their perimeter. This allows you to leverage and angles. Sell one of your bread n' butter concepts (GY Counter) only to hit the End Around off the Outside.

**QB READS & PROGRESSION:** Sell the Hand-Off to the RB – Toss the End Around to the Z Receiver

<b>X</b>	Block the Corner	<b>LT</b>	Secure the Down Defender (2i)
<b>H</b>	Sell Wrap then Turn Around Lead Up to MDM	<b>LG</b>	Distraction Pull
<b>Y</b>	Attack the Anchor Sell Frontside of GY	<b>C</b>	Back Block to Seal
<b>Z</b>	End Around Follow Lead	<b>RG</b>	Gap Combo to Seal
<b>F</b>	Sell Counter Track	<b>RT</b>	Gap Combo to Seal