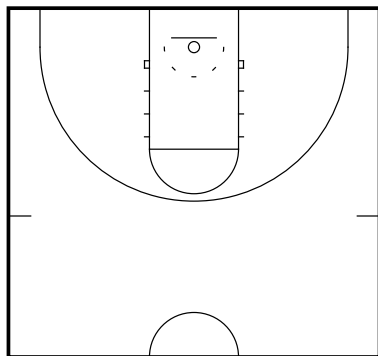


Pick and Roll Defense

"Hard Hedge" Coverage

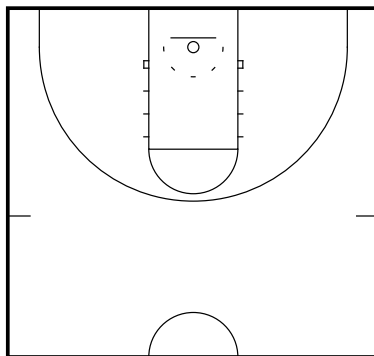
Pick and Roll Defense- "Hard Hedge"
Frame 1



"HARD HEDGE"

The screener's defender will slide out aggressively to stop the ball handler from driving or coming directly off the screen. He will force ball to go back up the floor and away from the basket.

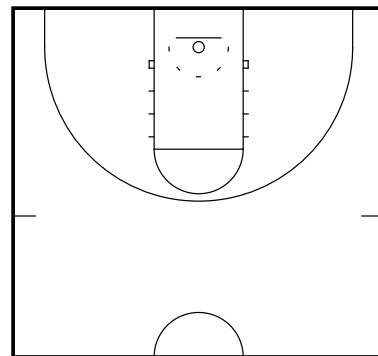
Pick and Roll Defense- "Hard Hedge"
Frame 2



Synonyms:

- "Hard Show"

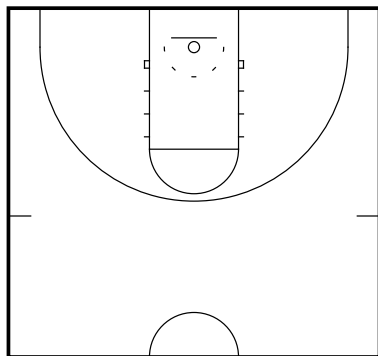
Pick and Roll Defense- "Hard Hedge"
Frame 3



Advantages:

- Forces ball away from basket and helps prevent scoring attack from ball handler
- Prevents ball handler from shooting a quick pull-up jump shot
- Makes passing to the roll man difficult

Pick and Roll Defense- "Hard Hedge"
Frame 4



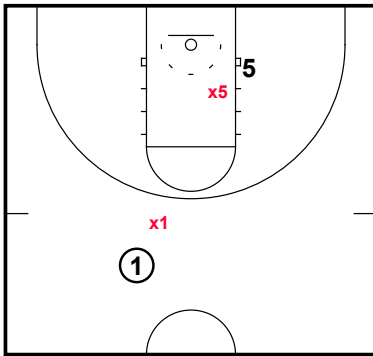
Disadvantages:

- Susceptible to being split and allowing a drive to the basket
- Pick and pop
- Forces help by off ball defenders on roll man
- Foul pressure on big man hedging

Pick and Roll Defense

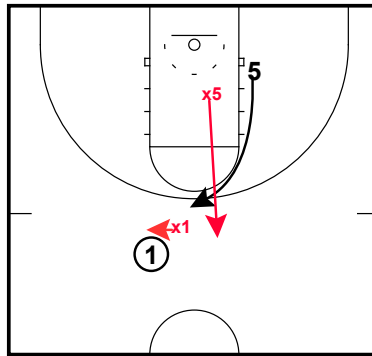
"Hard Hedge" Coverage

Pick and Roll Defense- Breakdown Middle
Ball Screen (Hard Hedge)
Frame 1



One of the most common ways of defending the ball screen is the "**HARD HEDGE**".

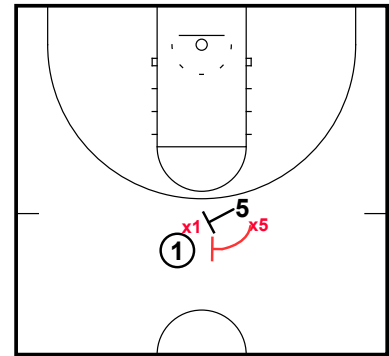
Pick and Roll Defense- Breakdown Middle
Ball Screen (Hard Hedge)
Frame 2



As soon as x5 recognizes that the offense is setting a ball screen, he immediately communicates with x1 by calling "screen [direction]".

When x1 hears x5 call out the screen, he immediately shifts his positioning to force the ball into the screen.

Pick and Roll Defense- Breakdown Middle
Ball Screen (Hard Hedge)
Frame 3



As 5 is going to set the screen, x5 steps up and positions himself early.

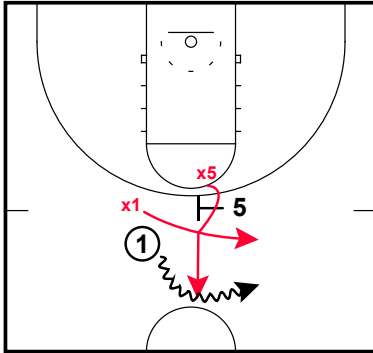
x5 positioning:

- chest parallel to the sideline
- low and wide stance
- "extension of the screen" --> inside hand on screener (5). Having a hand on the screener is key as it helps eliminate the chance of being split by the ball handler.
- high, wide arms/hands. This makes the show wider and eliminates the defender from picking up a cheap hand check foul.

Pick and Roll Defense

"Hard Hedge" Coverage

Pick and Roll Defense- Breakdown Middle
Ball Screen (Hard Hedge)
Frame 4



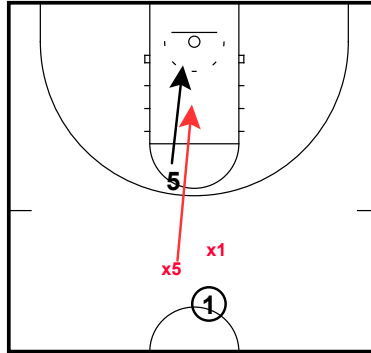
x1 forces the ball handler into the screen and the show man.

As the ball handler attacks, it is x5 job to drive the ball handler up the floor towards the half court line.

In a hard show, x5 will give at least 2 hard slides up the floor. He must be very careful as to not commit a blocking foul when sliding as the ball handler attacks. He must be in a stance with active feet, have arms out, and hands to the sky.

x1 goes over the screen and under x5 taking an angle to cut off the ball handler and square the ball up.

Pick and Roll Defense- Breakdown Middle
Ball Screen (Hard Hedge)
Frame 5



x1 will square up the ball and x5 will recover.

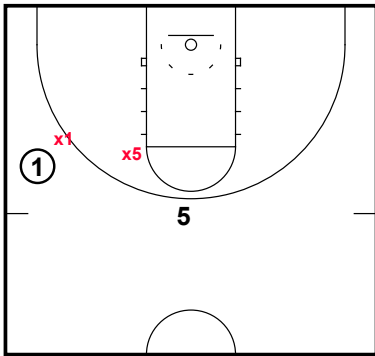
x5 recovery will be based on communication from other big- he may recover to own man or they may have "x-out" (switch).

x5 sprints with high hands in recovery.

Pick and Roll Defense

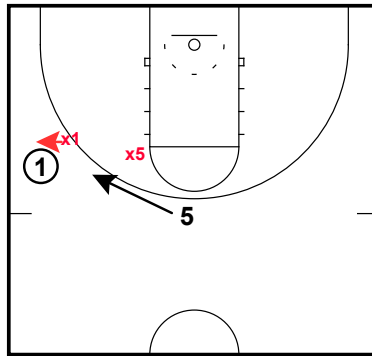
"Hard Hedge" Coverage

Pick and Roll Defense- Breakdown Wing
Ball Screen (Hard Hedge)
Frame 1



One of the most common ways of defending the ball screen is the "**HARD HEDGE**".

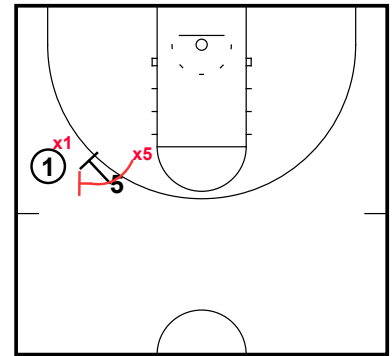
Pick and Roll Defense- Breakdown Wing
Ball Screen (Hard Hedge)
Frame 2



As soon as x5 recognizes that the offense is setting a ball screen, he immediately communicates with x1 by calling "screen [direction]".

When x1 hears x5 call out the screen, he immediately shifts his positioning to force the ball into the screen.

Pick and Roll Defense- Breakdown Wing
Ball Screen (Hard Hedge)
Frame 3



As 5 is going to set the screen, x5 steps up and positions himself early.

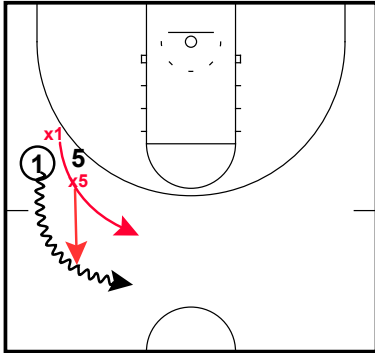
x5 positioning:

- chest parallel to the sideline
- low and wide stance
- "extension of the screen" --> inside hand on screener (5). Having a hand on the screener is key as it helps eliminate the chance of being split by the ball handler.
- high, wide arms/hands. This makes the show wider and eliminates the defender from picking up a cheap hand check foul.

Pick and Roll Defense

"Hard Hedge" Coverage

Pick and Roll Defense- Breakdown Wing
Ball Screen (Hard Hedge)
Frame 4



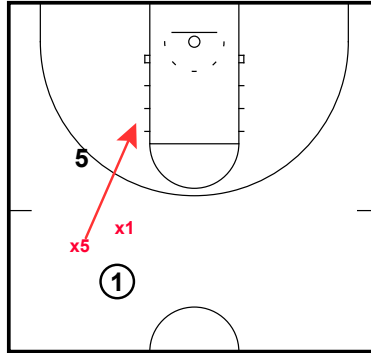
x1 forces the ball handler into the screen and the show man.

As the ball handler attacks, it is x5 job to drive the ball handler up the floor towards the half court line.

In a hard show, x5 will give at least 2 hard slides up the floor. He must be very careful as to not commit a blocking foul when sliding as the ball handler attacks. He must be in a stance with active feet, have arms out, and hands to the sky.

x1 goes over the screen and under x5 taking an angle to cut off the ball handler and square the ball up.

Pick and Roll Defense- Breakdown Wing
Ball Screen (Hard Hedge)
Frame 5



x1 will square up the ball and x5 will recover.

x5 recovery will be based on communication from other big- he may recover to own man or they may have "x-out" (switch).

x5 sprints with high hands in recovery.