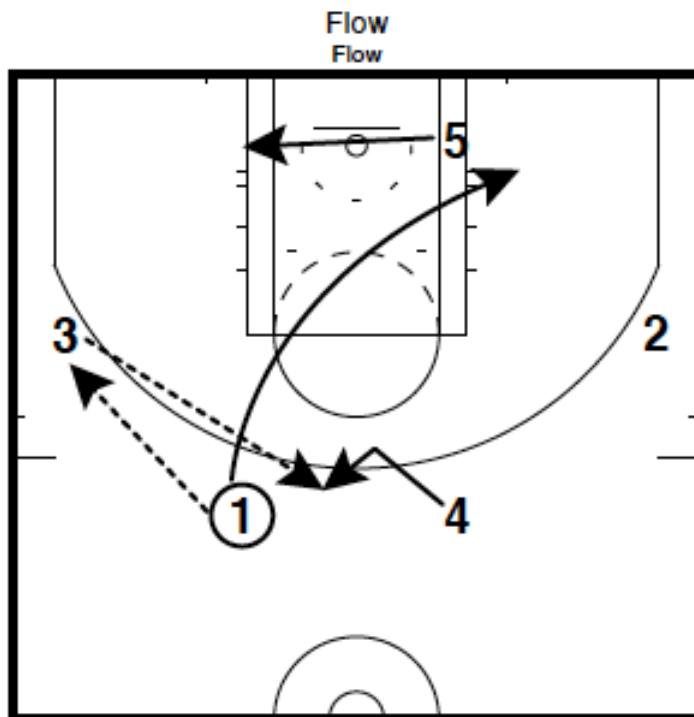
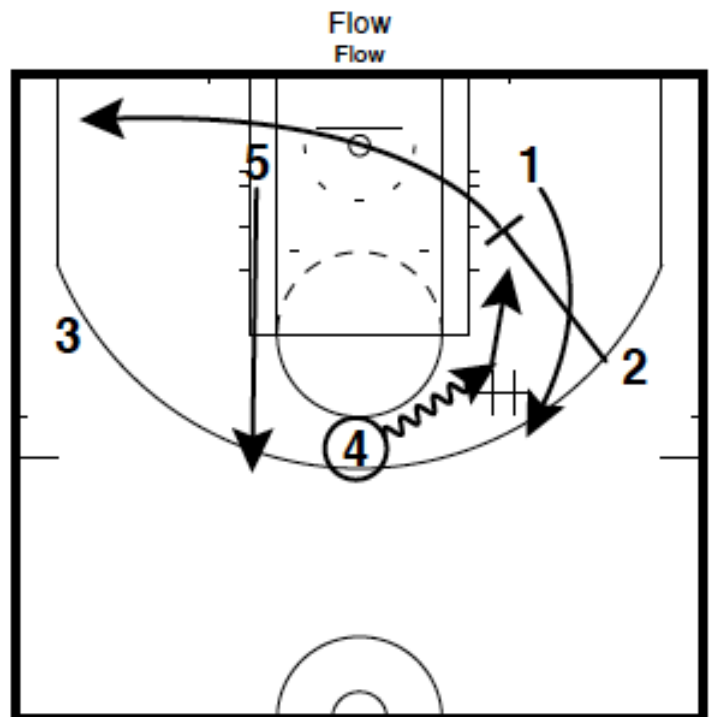


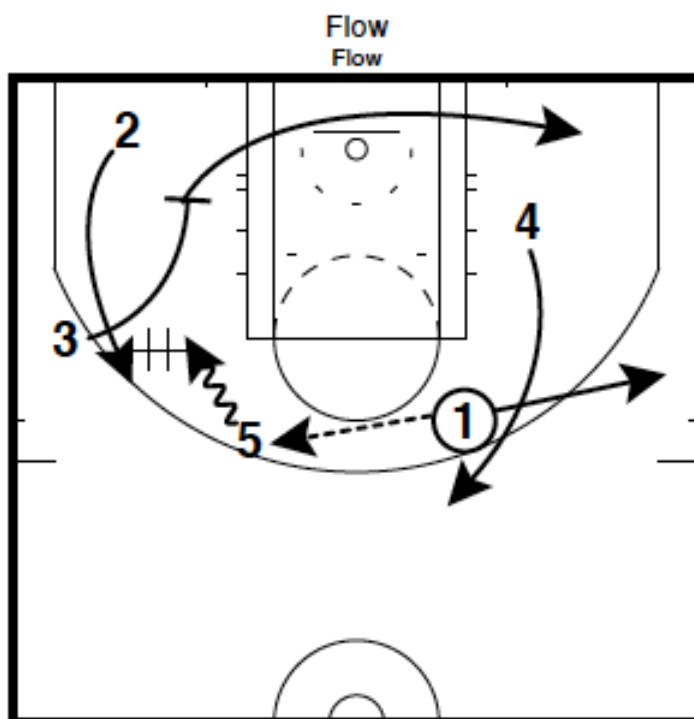
# Flow



1 hits 3 and cuts to opposite short corner  
4 gets open on top, 3 hits 4  
5 loops to the block



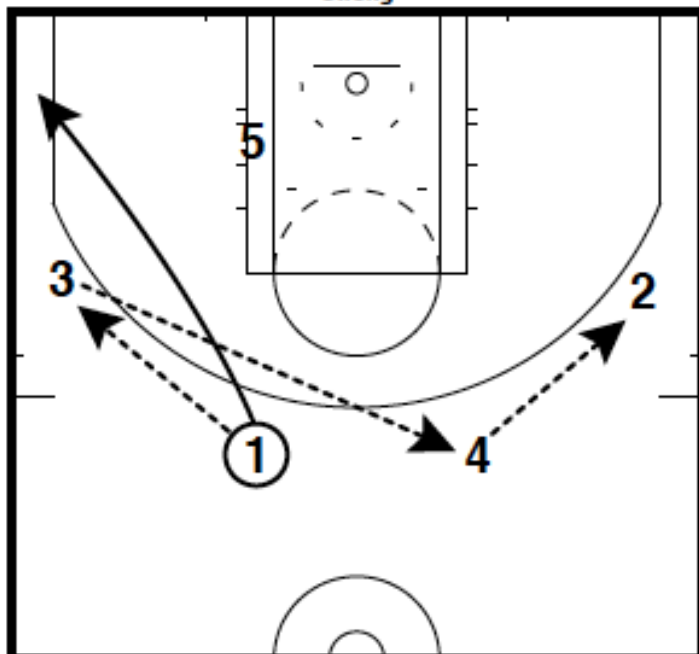
2 sets a pin down for 1 and clears  
4 follows to DHO for 1 and rolls  
5 needs to be in the slot during dribble over



1 hits 5 on top and spaces  
4 fills to top, 3 sets a pin down for 2 and clears  
5 follows to DHO with 2  
You can continue the continuity with this

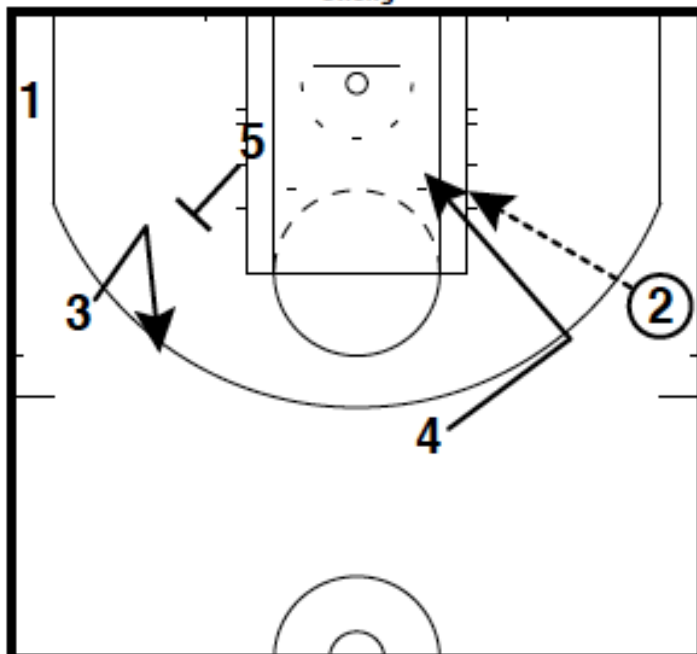
# Strong

Strong Quick  
Strong



1 hits 3 and cuts strong corner  
3 hits 4 on top, 4 swings to 2

Strong Quick  
Strong



5 sets a shuffle for 3, 3 denies  
4 runs to slip a BS with 2, 2 hits 4