



DBL POST

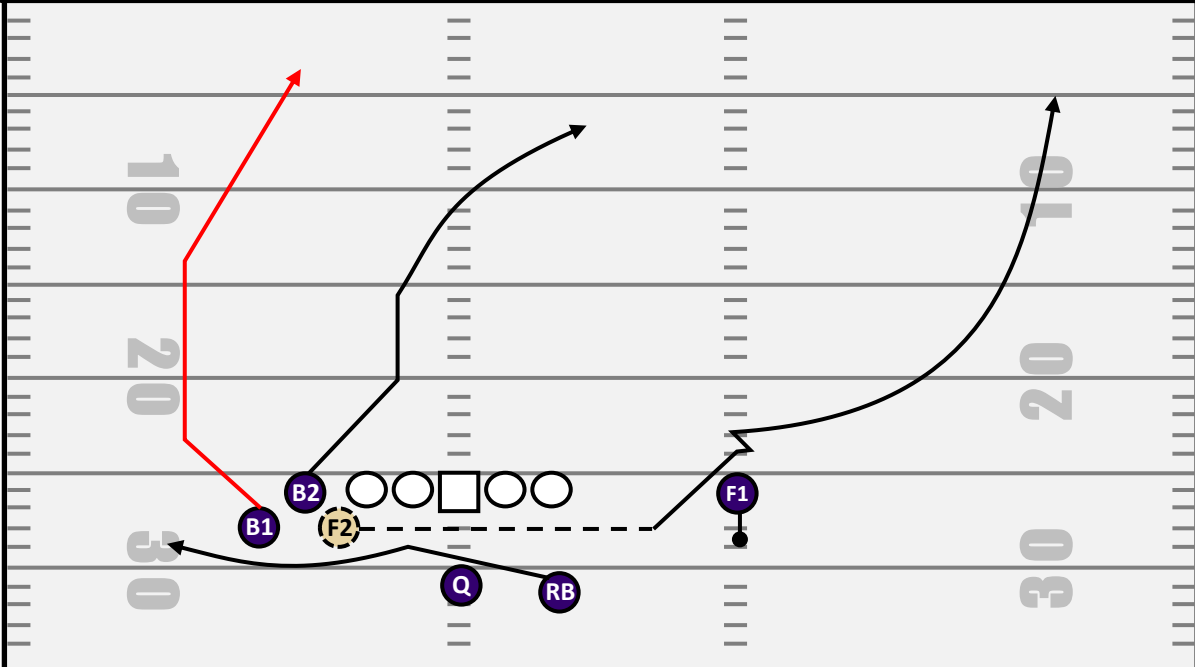
CORE CONCEPT: Y-CROSS
 SPECIFIC CONCEPT: BLOCK N GO WITH BACKSIDE Y-CROSS POST
 NOTE: F2 MOTIONS FROM THE BOUNDARY TO THE FIELD.

CONCEPT NOTES

PRINCIPLE
 F1 – SMOKE
 F2 – BNG WHEEL
 B1 – SPRAY POST
 B2 – STEM POST
 RB – CK SWING

FORMATION NOTES
 PRE-SNAP FIB 3X1
 TIGHT BUNCH.
 MOTION TO 2X2 YY.
 F1 BIG-CUT SPLIT.

OL
 5-MAN PRO



ROUTE	FS1	FS2	BS1	BS2	RB
	SMOKE	BNG WHEEL	POST	POST	CK SWING
DEPTH	-1 LOS	-	10 YARDS	9 YARDS	-5 LOS
NOTE	JAB UP SHUFFLE AWAY	MOTION STUTTER THEN GO	SPRAY TO TOP OF #'s	DIVE RELEASE +2 OFF OF HASH	BUILD VERTICAL ONCE AT #'s

NOTES

OREGON APPEARS TO BE IN PRESS-QUARTERS COVERAGE WITH AN ODD FRONT.

- FIELD CB IS DOWN AND PRESSING
- BND CB IS OFF AND SOFT DUE TO THE TIGHT BUNCH
- FIELD SAFETY PLAYS THE SCREEN HARD

THE INSIDE POST FROM B2 ATTRACTS THE BND-SAFETY AND OPENS UP SPACE BEHIND HIM.

THE TIGHT BUNCH FORCES THE BND-CB INTO OUTSIDE LEVERAGE, THE SPRAY RELEASE WIDENS HIM FURTHER AND ALLOWS FOR THE POST TO BREAK CLEAN AGAINST THE CB'S OUTSIDE LEVERAGE.

THE PLAY RESULTS IN A 26-YARD TOUCHDOWN.