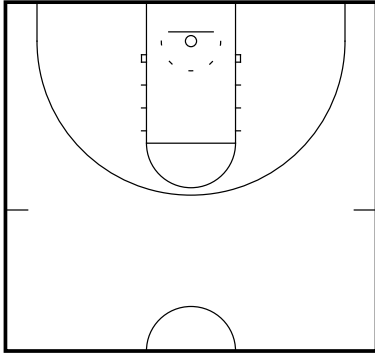


Offensive Glass

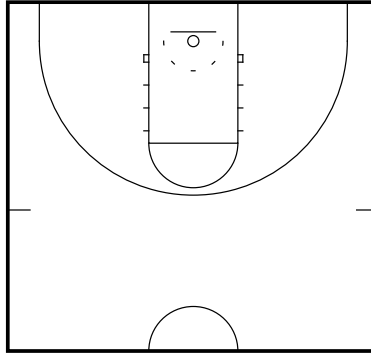
General

Attacking the Switch- Offensive Glass
Concepts



One of the most basic ways of punishing a defense that switches screens is to **dominate the offensive glass**.

Attacking the Switch- Offensive Glass
Concepts



Sometimes the best way to take advantage of a little switching onto a big is to get a shot up on the rim for the big to rebound. This can certainly be the case when a small is stuck fronting the post in an attempt to keep the ball out of the post. When the shot goes up, he will be pinned on the outside and in a bad rebounding position.