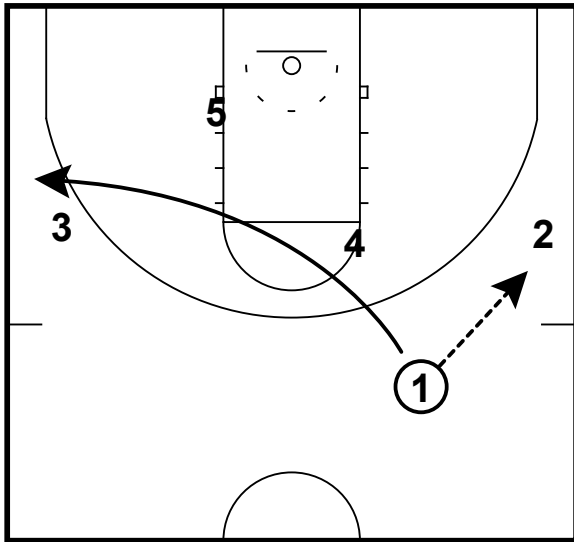


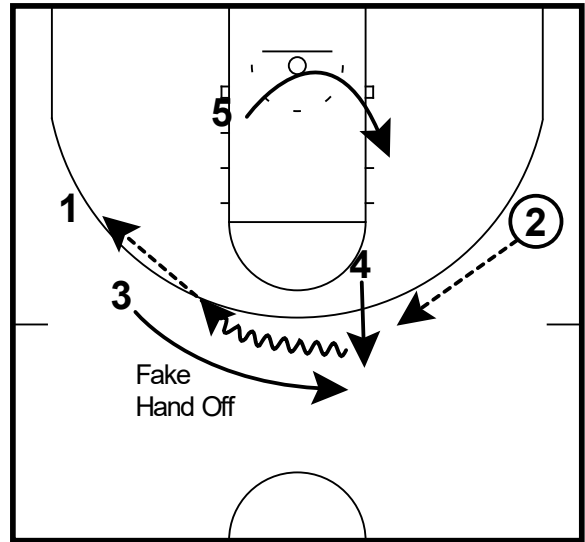
5 Out Offenses

Popular Actions

Thru Action



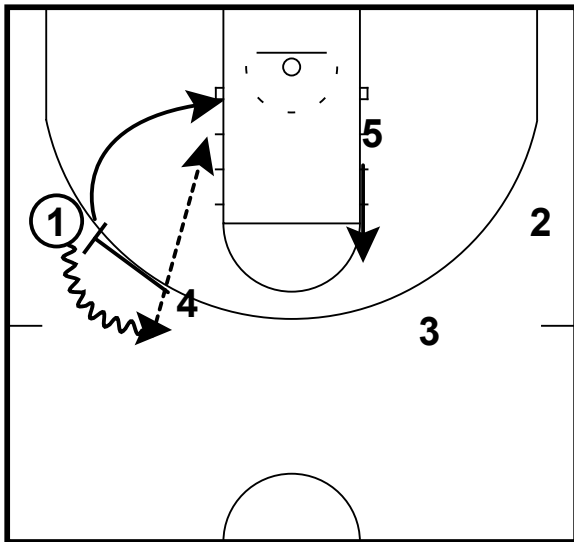
Thru Action



Thru action is 5 out spacing
 This action allows you to have 2 bigs playing at the same time
 You now have 2 screeners rather than 1 in pistol action

2 passes to 4 in the slot
 4 fakes hand off to 3 then passes to 1 at the wing
 5 fills slot vacated by 4

Thru Action

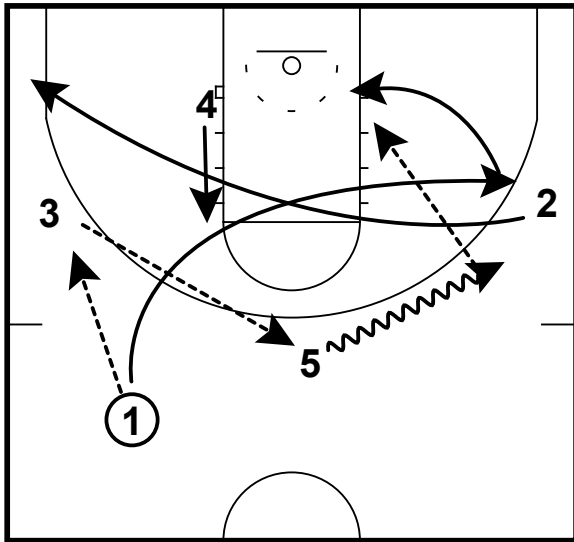


1 hits 4 on the roll

5 Out Offenses

Popular Actions

Thru Action Counter (Back Cut)

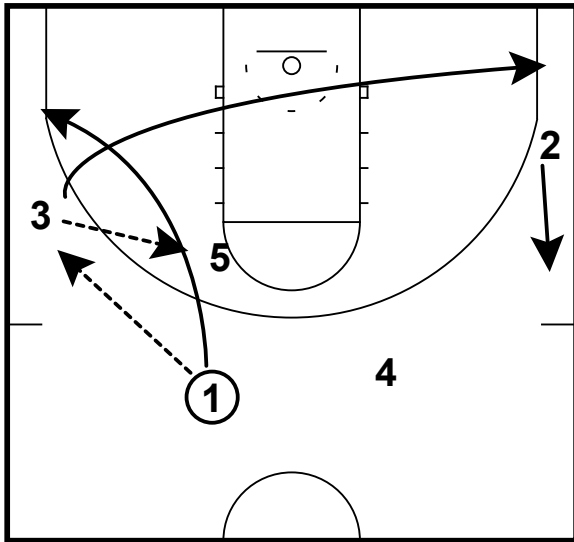


If the defense tries to deny wing entry pass
5 looks to hit 1 on the back cut

5 Out Offenses

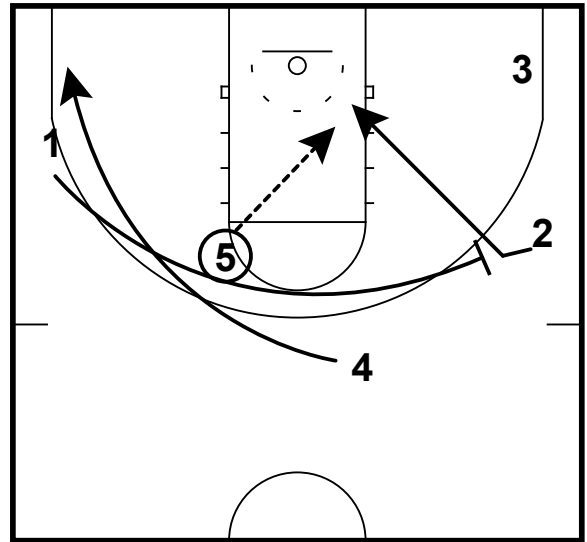
Popular Actions

Thru Action Counter (Split Action/Reject)



- 3 hits 5 at the elbow
- 2 lifts to wing
- 3 fills corner

Thru Action Counter (Split Action/Reject)

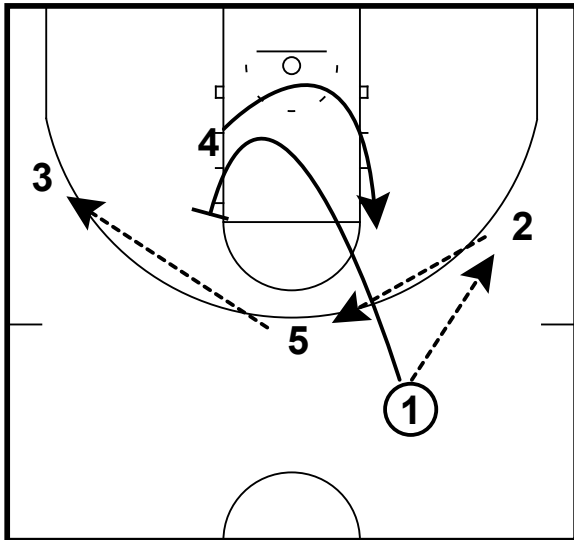


- 1 and 4 run split action
- 5 hits 2 rejecting screen set by 1

5 Out Offenses

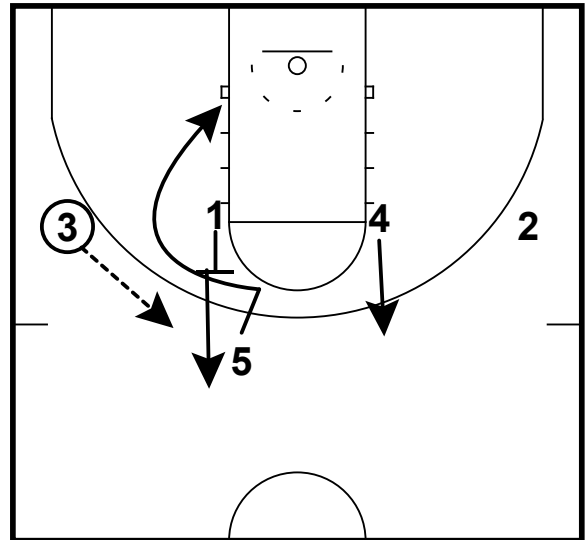
Popular Actions

Thru Action Counter (UCLA Screen/Middle BS)



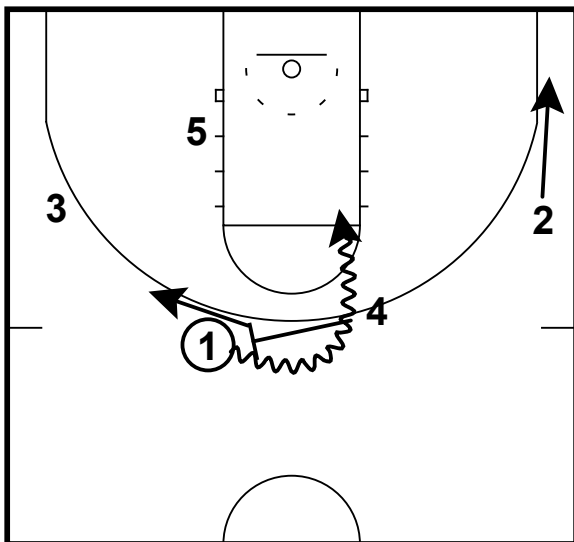
Play starts with normal thru action
Rather than filling to the wing
1 sets a UCLA screen for 5

Thru Action Counter (UCLA Screen/Middle BS)



3 looks for 5 on the cut and post up
1 pops to the top to receive pass from 3

Thru Action Counter (UCLA Screen/Middle BS)



4 pops after setting middle ball screen for 1