



FLOOD

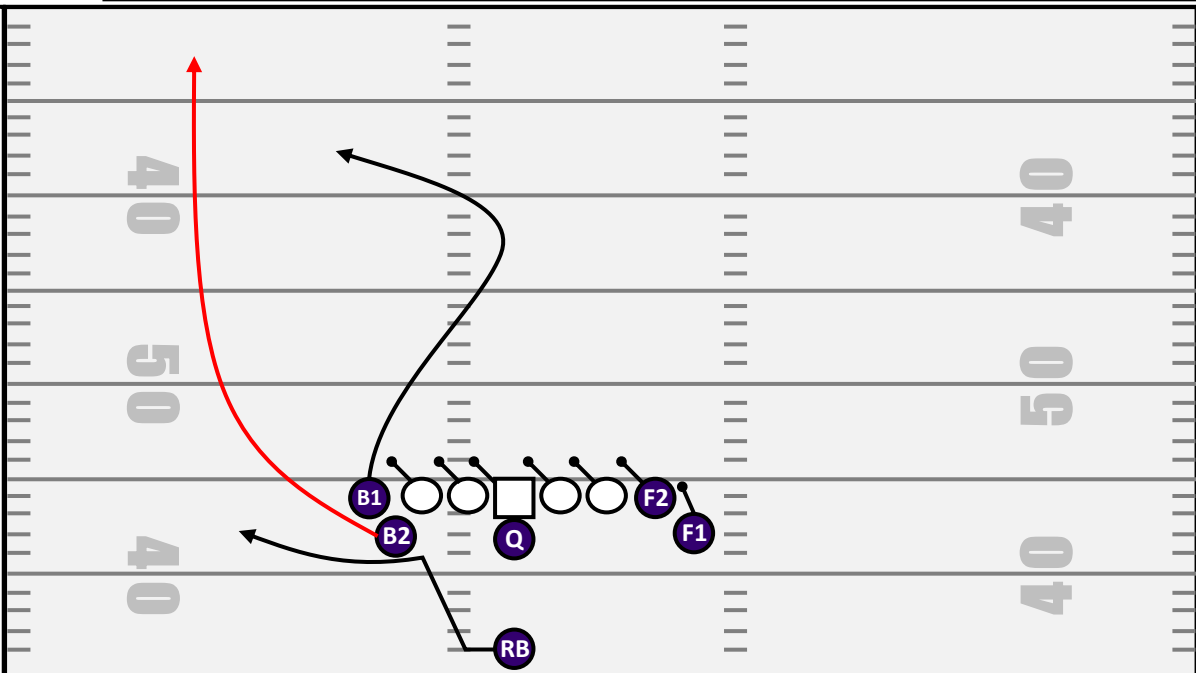
CORE CONCEPT: FLOOD
 SPECIFIC CONCEPT: SWITCH FLOOD WITH INTERIOR THUMB ROUTE
 NOTE: 7.5-MAN MAX PROTECTION OFF OF FULL SLIDE

CONCEPT NOTES

PRINCIPLE
 F1 – PROTECT
 F2 – PROTECT
 B1 – THUMB
 B2 – GO
 RB – CK FLAT

FORMATION NOTES
 DBL TIGHT.
 DBL WING.
 EXCHANGE ALIGN
 BETWEEN B1/B2.

OL
 GAP SLIDE



ROUTE	FS1	FS2	BS1	BS2	RB
	PROTECT	PROTECT	THUMB	GO	CK FLAT
DEPTH	-	-	12-YARDS	-	-3 LOS
NOTE	GAP SLIDE D-GAP	GAP SLIDE C-GAP	SELL CROSS ROLL OUT	WHEEL UP THE #'s	CK PROTECTION FLARE OUT

NOTES

WAZZU IS IN A LOADED 10-MAN BOX IN THIS 4TH AND SHORT SITUATION

- BND CB IS MUGGED ON THE LOS
- BND SAFETY IS SHADED BEHIND THE BND CB

THE BND CB FALLS ON THE SNAP AND THE BND SAFETY IS STUCK HAVING TO CARRY TWO VERTICAL WR'S.

THE SWITCH EXCHANGE ALLOWS FOR THE B2 TO RELEASE FREE ON HIS VERTICAL.

THE PLAY RESULTS IN A 40-YARD TOUCHDOWN.