

Design Buy Build

M A G A Z I N E

Issue 72 2025 £3.95

www.designbuybuild.co.uk

Self Builders



Property Developers



Architects



Interior Designers



The Georgeville Residence Project

A Sculptural Harmony with the Eastern Townships, Designed by 1628



The Des Lauriers House

Designed by Paul Bernier Architects, this Home Nestles into the Hillside



Alva Roy Architects

Double House: Balancing Seclusion, Privacy, and Light-Filled Interiors



PYRAN® S

For fire resistance and protection of people and property

Now available for UK manufacture

Multifunctionality in fire protection

PYRAN® S is a pre-stressed, monolithic borosilicate single pane safety glass in accordance with EN 13024-1.

As a component in fire-resistant glazing that meets the requirements of resistance classes E 30, E 60, E 90 and E 120, it has proven its outstanding optical and mechanical characteristics over the years in a wide variety of buildings.

Areas of application

PYRAN® has been internationally approved and ideally suited for:

- Facades
- Partition walls
- Skylights and rooflights
- Doors
- Roofs
- Smoke screens
- lift door glazing
- lift shaft glazing

Facts

- Higher ability to withstand temperature differentials: In comparison to soda-lime glass, tempered borosilicate glass can better withstand temperature differentials and can therefore be glazed with normal edge covers (20±2 mm).
- Higher softening temperature: Because the glass is self-supporting for more than 30 minutes, large panes and simple frame constructions are now possible.
- Higher viscosity: The glass flow rate is low due to the high viscosity and durability of borosilicate glass, so with more edge cover, greater fire resistance times in excess of 90 minutes can be achieved.
- NiS crystals do not form: Due to the chemical composition of borosilicate glass, nickel sulphide crystals cannot form. Spontaneous glass fracture due to embedded NiS crystals cannot happen with PYRAN®.

Further information is available from our sales and technical offices or visit www.firmanglass.com

Tel: 01708 374534 Email: Pyran@firmanglass.com

Firman Glass, 19 Bates Road, Harold Wood, Romford, Essex RM3 0JH



www.firmanglass.com

ISSUE HIGHLIGHTS

- 04-07 Georgeville Residence**
1628 Designs a Sculptural Residence in Harmony with the Eastern Townships.
- 20-21 House in a Meadow**
Nestled on 30 Wooded Acres in North East, NY, Featuring a Ridge and Meadow.
- 22-24 Transform Your Bathroom in 2025**
Bold Tiles, Deep Hues, and Nature-Inspired Designs.
- 32-34 Paul Bernier Architecte**
Des Lauriers House by Paul Bernier Architecte, Set in Bromont's Rural Hillside Near the Equestrian Park.
- 42-43 Priyam Residence**
1-Acre Luxury Bungalow Landscape Blends Nature and Architecture for Relaxation and Living.
- 50-51 Alva Roy**
Alva Roy's Double House Balances Seclusion, Privacy, and Light-Filled Interiors.
- 66-67 WDA's House of Light and Shadow**
Modern design meets Victorian charm within this California family home.
- 70-71 Coastal House Extension**
Architect Chooses Catnic Urban Roofing and Cladding.
- 76-77 House B**
A Bold Heritage Terrace Renovation with Translucent Glass Wall for Privacy and Light.
- 80-81 Forest House**
Family Home in Oostvoorne's Lush Forest Blends Seamlessly with Nature

PRODUCTS & SERVICES

- 08-19** Editor's Choice
22-32 Bathrooms & Kitchens
35-41 Doors, Windows & Fittings
44-46 Floors & Flooring
47-49 Heating, Ventilation & Insulation
52-65 Interiors & Interior Design
68-69 Lifts, Stairs & Balustrades
70-75 Roofing & Cladding
78-79 Safety, Security & Fire Protection
82-83 Waste Solutions

SHOW PREVIEW

- 12-13** Futurebuild
60-63 Surface Design Show
64-65 January Furniture Show

COVER PHOTO



70 Architect Uses 'Signature' Catnic Urban Roofing And Cladding For Coastal House Extension

Design Buy Build - www.designbuybuild.co.uk

Editor in Chief
Antony Holter
antony@designbuybuild.co.uk
01304 806039

Sales Director
Chris Nicholls
chris@designbuybuild.co.uk
0203 907 9161

Editor
Fiona Meadows
fiona@designbuybuild.co.uk

Editorial Assistant
Tom Moore
tom@designbuybuild.co.uk

Business Manager
Josh Holmes
josh@mhmagazine.co.uk

Subscription Manager
Lottie Miller
subscriptions@mhmagazine.co.uk

Digital Manager
Jamie Bullock
jamie@mhmagazine.co.uk
01227 936971

Publishing Director
Martin Holmes
martin@mhmagazine.co.uk



Published by:
MH Media Global Ltd
18/20 Newington Road
Ramsgate
Kent
CT12 6EE

Tel: 01304 806039

© MH Media Global



GEORGEVILLE RESIDENCE

A Sculptural Residence in Harmony with its Eastern Townships Environment,
Designed by the Architecture and Design Firm 1628

The Georgeville Residence project is located in the Eastern Townships region of Quebec. It is built on a large meadow dotted with clumps of mature trees. The site of great beauty opens to the west onto a wide, rolling panorama.

The owners, who have owned the property for several years, had called on the firm 1628 in 2004 for an initial renovation and expansion project of the residence built by previous owners during the 1980s. The entire exterior envelope had then been reviewed, including the replacement of windows and insulation, a modification of the roof, and

the addition of natural stone cladding. As part of this project, the house was also extended, and the 3-storey wing was built. The modifications also included a redevelopment and renovation of the interior spaces. The owners contacted 1628 again in 2021 for the addition of spaces dedicated to receiving guests and colleagues. This new project therefore includes a living room, a dining room, and a kitchenette. It also includes a triple garage, an office, a relaxation room, and storage spaces. It was important that the new wing integrate perfectly with the existing building, and that it be in its visual and functional continuity.

CONCEPT

In 2021, the site was occupied by the house previously renovated in 2004 and 2005. On each side of the residence, curved walls lined with glass blocks had been built to ensure the privacy of the backyard. This yard had also been developed with a swimming pool, sidewalks, and plantings. All of these elements, as far as possible, had to be preserved.

Knowing the property very well, the designers proposed an extension on the north side of the existing complex. The new wing is deliberately



designed away from the elements to be preserved: it goes around them. In doing so, it helps to close off the backyard to ensure greater privacy.

To organize the space, the new living spaces were placed on the north-south axis, in line with the sidewalk next to the pool, and on the edge of the outdoor spaces already developed. In this location, the new rooms benefit from a magnificent view of the garden and the landscape. The other rooms and spaces are arranged along the corridor joining the existing house. This corridor connects the existing house to a place where it was naturally easy to create a functional interior link.

THE SITE AND THE IMPORTANCE OF THE LANDSCAPE

The existing house was almost entirely oriented towards the landscape to the west. All the main rooms have at least one view of this side. The outdoor living spaces are also arranged there, grouped around the swimming pool. The owners wanted this logic to be respected for the extension. They wanted the new additions to enhance and strengthen the links with the landscape.

The designers respected this desire and pushed this concept further by multiplying and varying the points of view, in order to highlight other orientations and locations on the property. The extension is placed between the pool area and a grove of mature deciduous trees. In addition to opening the new living rooms to the main panorama and the pool, these rooms also benefit from very beautiful views of the woods. Thus, depending on the seasons, the views and atmospheres change, which allows you to rediscover certain areas of the property that were underestimated.



On the north side, the wooded area planted with imposing trees has been preserved near the extension. Only a strip of lawn and a steep slope separate them. The walker discovers a place that contrasts by its verticality with the other outdoor spaces that echo more with the horizontality of the wide panorama. The close contact with the trees embellishes the interior via generous windows.

The designers favored the creation of new intimate outdoor spaces between the different parts of the house. A space for a Japanese-inspired garden is set up in a courtyard enclosed on three sides, located between the existing house and the extension. This space is visible from the inside through windows placed to highlight it. The garden can be discovered from several different places and viewpoints as you wander around.

A contemplative mineral garden is also placed between the new access corridor to the extension and a wall of glass blocks. Several windows overlook this space in which the light is filtered by the glass blocks. Thus, depending on the time of day, the atmosphere is transformed and the colors change.

Another important element: the views of the exterior volumes of the building from the interior of the house have been multiplied to add to the complexity and to enrich the experience. These viewpoints are multiple and change depending on where you are.

Finally, the exterior lighting has been designed to enhance the volumes and highlight the landscape, depending on the seasons.



VOLUMETRY

The extension was designed on a single level. This makes it easier to move around and makes better use of the spaces. The whole was designed to accommodate people with reduced mobility if necessary. To prevent this extension from appearing too low and horizontal next to the existing house, which has 2 and 3 levels, the designers created new stepped volumes. The low point is located at the intersection where the existing house and the roofs are gradually raised to the highest point, which is the new chimney. The latter was oversized to give it more presence.

The exterior volumes are also cut out following the shape of the roofs. This division accentuates the verticality, breaks the monotony, and creates a dynamic volumetric play. The proportions of the new volumes also follow the proportions of the existing house in order to avoid any visual break.

The new link with the existing was placed towards the front of the existing house. It was designed as a promenade, like an ambulatory that guides the visitor to an isolated place, set back from the rest of the house. It goes around the preserved glass block wall in an arc, and at a good distance. The contemplative garden was created in this gap.

The new volumes take up the facings, finishes, and details of the existing house. The cut stone elements come from the same quarry as the original stones and were custom-cut to fit in. A copper-coloured aluminium tile facing was integrated in certain places to visually lighten the whole and add an additional degree of complexity. These interlocking aluminium sheets mostly take up the proportions of the stone elements. Other formats were planned to add texture or to cover by hugging the curved wall.

"We created an extension that coherently complements the original house, as if the whole thing had been built in one go," explains François Parenteau, architect and president of 1628. "The addition of copper-coloured aluminium tile cladding complements the stone of the façades. It adds a lightness and complexity to this ensemble that remains timeless. It respects the aesthetics of 2004, while evolving it."





INTERIOR SPACES

The extension is accessible from the entrance hall of the original house via the new access corridor. This corridor unfolds in an arc that goes around the existing one. It is fenestrated on each side in the first few meters, and benefits from views of the outside along its entire length. It acts as the backbone of the extension. In addition to being the main circulation, it serves as a secondary entrance hall and cloakroom area. At its end, it lowers and transforms into a vaulted passageway over several meters. This windowless passageway is narrower and is lit only by the ground. At its end, it opens onto the vast and bright living rooms. This contrast accentuates the size of the living room and highlights the openings onto the landscape.

Although on a single level, the rooms are endowed with a beautiful complexity. The play of volume and roofing observed outside is reflected in the height of the ceilings of the interior rooms and follows the same gradation. Although relatively high, the ceiling of the living room has been deliberately lowered in its center to increase privacy in front of the fireplace. This ceiling is raised towards the high windows in inverted slopes to literally bring the

landscape inside. The limits between the interior and the exterior thus become almost non-existent.

“This project highlights how important it is to listen to the desires and needs of clients in order to create architecture and design that respects the lifestyle of its occupants,” explains Annie Charest, designer and vice-president of 1628. “It is essential to work to create a setting in which people can flourish.”

To avoid any visual disruption, the finishing materials used inside are in line with the materials of the existing house. The walls and ceilings are in painted gypsum, while the doors and woodwork are in stained cherry. For the floors, the owners opted for concrete, stained pale brown, and with a polished finish. This material fits very well with the continuity of the slate tile floors of the existing house. In the living room, the imposing fireplace is clad in natural stone, such as the stone used on the facades. The kitchenette was designed as an element that is similar to the furniture, integrating it more into the general aesthetic of the place. In the bathrooms, the walls are covered in porcelain tiles with a Carrara marble effect.



TECHNICAL SHEET

Project Name: Georgeville Residence

Architecture, Interior Design and Garden Design:
1628 Inc.

Project Team: Annie Charest and François Parenteau

2004-2005 Project Area (2004-2005): 5200 sq. ft.

2021-2022 Project Area 2021-2022: 3450 sq. ft.

www.1628inc.com

Photo credit: Drew Hadley

WATER LEISURE – IT'S OUT WITH THE OLD, IN WITH THE NEW AT SPATEX 2025

Kickstart 2025 by taking a deep dive into the exciting world of water leisure at SPATEX 2025. Discover the latest trends, materials and technologies specific to designing water features and building in a water leisure environment. Whatever the project, SPATEX is the place for architects, builders, pavers, tilers, developers, specifiers to meet over a thousand people from the water leisure industry in one day, and it's free to attend.

Held at the Coventry Building Society Arena, Tuesday 4th to Thursday 6th February, the UK's annual exhibition is your starting point for spas, wellness suites, swimming pools, steam rooms, saunas, enclosures and all the ancillary equipment. With over a hundred exhibiting companies, including all the leading manufacturers and suppliers from around the world, SPATEX 2025 gathers under one roof the industry's key decision-makers. This is where all the conversations that will shape the water leisure market over the next 12 months will take place.

INNOVATIONS

View and compare a host of new innovations, both for the commercial and domestic markets. See, touch and discuss the latest products and take advantage of exclusive show offers. A New Product Zone (sponsored by Swimming Pool News) highlights the products that look set to make the headlines.

The British Swimming Pool Federation (BSPF) will be holding its awards ceremony on the Tuesday evening of SPATEX. Photographs of the winning projects, representing the best examples of design, construction, and installation, will be showcased on stand A1.

FREE LEARNING

With a free double seminar programme in two arenas offering over 40 talks by industry leaders, SPATEX answers the challenge of staying up to date on safety standards and compliance as well as the technicalities of constructing water leisure facilities. For example:

Wednesday 5th Feb 12:45-13.15 Planning, Design & Layout of Plant Rooms - Arena 1 -Michael Burnham of Pool Logic discusses how the design of a plant room plays a vital role in the success of any pool project. Discover practical strategies for creating plant rooms that are efficient, functional and a pleasure to work in.



Cranbourne Stone

SUSTAINABILITY

Discover new technologies and practices, such as eco-friendly construction materials, which can be integrated into green building designs. Saving energy is high on the seminar agenda and in the products displayed on exhibitors' stands, where you can expect to see the latest heat retention covers, LED lighting, air source heat pumps and super insulated one-piece pools.

INVEST IN YOURSELF

Catch over 20 CPD-accredited interactive workshops in Arena 1 curated by the Institute of Swimming Pool Engineers (ISPE). Just one of many industry associations that SPATEX is fortunate to have the support of.

EXPERT ADVICE

Gain the most up-to-date information from over a thousand industry professionals. Some things can only be done in person - bring your plans with you - there's no better place to seek impartial advice from a variety of specialists, and all for free.

Please visit the SPATEX Help Desk at the entrance to the exhibition hall if you need pointing in the right direction.

► **Register now** <https://forms.reg.buzz/spatex-2025/design-buy-build>

SPATEX 2025 - Tuesday 4th to Thursday 6th February. The Coventry Building Society Arena, Coventry CV6 6GE with 2,000 free car parking spaces is within two-hour drive time of 75 per cent of the population.

For more info: helen@spatex.co.uk
Tel: +44 (0) 1264 358558

SPATEX

THE POOL, SPA & WELLNESS SHOW

TUESDAY 4 - THURSDAY 6 FEBRUARY 2025

FOR MORE INFORMATION AND
TO REGISTER FOR FREE VISIT:

WWW.SPATEX.CO.UK OR
CALL +44 (0)1264 358558



All sectors of the water leisure industry from pools, spas, saunas, hydrotherapy, steam rooms and play equipment, in the domestic and commercial arenas, are represented at SPATEX.

COVENTRY BUILDING SOCIETY ARENA • COVENTRY • UK



THE ALUPROF AWARDS

By Wojciech Brożyna - MD Aluprof UK



Leading Aluminium Systems Company, Aluprof, recently held their fifth bi-annual Future Builders International Conference in Poland to great acclaim. Members of the Aluprof UK & Ireland team and their guests attended the event which took place on 16th October at the DoubleTree by Hilton Hotel in Warsaw.

The diverse panel assembled for the event featured not only distinguished architects but also prominent experts from the construction sector, including engineers, urban planners, specialists in sustainable building, and sociologists focused on spatial dynamics. Their discussions centred on the future trajectory of the Global Construction Industry and the necessary directions for its development. The event was designed to be inclusive, allowing a wide array of participants from the construction field to engage actively by posing questions or sharing their insights. To reach the widest audience, the event was streamed online, ensuring that those unable to attend in person could still partake in the proceedings.

The panel debated the future of architecture in the context of sustainable building. The discussions also embraced the challenges facing the sector and an analysis of trends in architecture, encompassing the direction of travel in the development of our cities and towns. Acclaimed figures among the panellists this year included José Pareja Gómez of the renowned Zaha Hadid Architects and Ian Bogle, the founder of the multiple award-winning architecture and design studio Bogle Architects, along with leading Polish Architects.

This year's Future Builders international conference featured three panel discussions that showcased prominent architects and various experts as panellists. The event also included a presentation of the winner of the 2022 Building of the Year Created with ALUPROF Systems competition, as well as a discussion on an innovative development utilising architectural aluminium systems by ALUPROF. The first panel, entitled "Sustainability in Architecture: A Genuine Necessity or Just a Trend?", was moderated by Paweł Gregorczyk, the brands communication manager at ALUPROF, alongside Wojciech S.

Wrocław, a trainer in business etiquette and public speaking. During this session, the panellists engaged in a comprehensive discussion on various subjects, focusing on how modern technologies can assist architects and designers in addressing climate change and striving for a sustainable future. They also exchanged insights from their respective countries, highlighting the systemic solutions being adopted within those contexts.

The second panel at the Future Builders conference, entitled *New or ReNEWed: Revitalising Buildings as the Future of Architecture*, focused on the increasingly relevant topic of building renovation, a trend that has gained traction in recent years, largely due to the European Union decarbonisation initiatives. Agnieszka Kalinowska-Sottys, in her presentation, highlighted that whether engaging in the renovation of existing buildings or the construction of new ones, an endeavour that remains essential is our efforts being rooted in sustainable development. The panellists collectively emphasised the critical importance of achieving a harmonious balance between new projects and renovated buildings, whilst also aiming to reduce the environmental footprint of the Construction Industry.

The third session of the conference showcased the esteemed architect Professor Ewa Kuryłowicz, affiliated with the prestigious Kuryłowicz & Associates studio. She delivered a presentation on the Faculty of Modern Languages and Institute of Applied Linguistics building at Warsaw University, which was awarded the Grand Prix in the fourth edition of the Building of the Year Created with Aluprof Systems competition in 2022. In her case study, she explored the innovative solutions implemented in this notable construction project, one of the most remarkable in Poland in recent years, whilst also discussing the various challenges her studio faced during the conceptual development of the building.

Following the third session a panel discussion entitled "Is a Decade in Architecture Long Enough?" took place offering the audience an opportunity to engage in the conversation. This debate was organised to commemorate the fifth anniversary of the Building of the Year Created with ALUPROF Systems competition and featured a panel of previous winners. The panellists unanimously expressed that the designs they had developed for their award-winning projects would remain unchanged today. Nonetheless, they acknowledged that the significant advancements in building technology over the last decade would enable them to incorporate even more sustainable solutions.

In what has now become a tradition, the Future Builders conference culminated in a gala where the winners of the international Building of the Year Created with Aluprof Systems competition were announced. This year marks the tenth anniversary

of the initiative, which was conceived for architectural practices and independent architects and designed to single out the most interesting buildings featuring aluminium solutions by Aluprof. The winners award went to Macków Pracownia Projektowa for Bernardynska 4, a residential and retail complex in Wrocław, Poland. In the global category, third place winner went to the Sheppard Robson Architects project, 68-86 Farringdon Road, London which was featuring Aluprof's MB-70HI, MB-77HS window door systems and MB-SR50N curtain walls that are fabricated by Alu-Fix Facades.

www.aluprof.co.uk



ALUPROF
ALUMINIUM SYSTEMS

Aluprof UK have been supporting specifiers in the UK and Ireland for over fifteen years with advanced systems that include, high performance windows doors and facade systems. Many UK and Ireland based fabricators and installers supply these systems and are on hand to offer surveys and cost analysis as to what improvements can be made with likely paybacks. Further information about systems and specification support is available through the company website at aluprof.co.uk or direct from their UK head office in Altrincham by phoning +44 (0) 161 941 4005.

FUTUREBUILD 2025: A MUST-ATTEND EVENT FOR ARCHITECTS AND SPECIFIERS

Celebrating 20 years of driving innovation and sustainability in construction, Futurebuild 2025 promises to be a landmark event for architects and specifiers. Taking place from March 4th-6th at Excel London, the event showcases cutting-edge technologies, thought leadership, and actionable solutions for the industry's challenges.



KEY HIGHLIGHTS

Futurebuild 2025 centres on its theme, Impact, inspiring change in sustainable construction and net-zero advancements. Visitors can explore the Futurebuild Arena, National Retrofit Conference & Expo, The Innovation Trail, and five specialised Impact Stages featuring expert sessions tailored to different sectors.

- Buildings Impact Stage:** Sponsored by HG Matthews, this stage explores net-zero design, modular construction, and Future Homes Standard with partners like Passivhaus Trust and BRE.
- Materials Impact Stage:** Sponsored by Aggregate Industries, discussions focus on sustainable materials, traceable supply chains, and waste minimisation. Partners include The Concrete Centre and Built By Nature.
- Placemaking Impact Stage:** Curated with Urban Design Group and RSPB, this stage delves into creating sustainable, connected communities.
- Energy Impact Stage:** Sponsored by Kensa, topics include integrating renewable energy and decarbonisation through technologies like heat pumps and thermal storage.
- FutureX Digital Disruptors Impact Stage:** Sponsored by One Click LCA, focusing on leveraging construction technology for societal and environmental benefits.

THE FUTUREBUILD ARENA

This arena emphasises the transition to a climate-resilient economy within planetary boundaries. It features sessions under three themes: Circularity and Reuse, Sustainability and Social Justice, and Making it Happen. Each explores short- and long-term pathways to achieving climate targets.

NATIONAL RETROFIT CONFERENCE & EXPO

The co-located National Retrofit Conference & Expo is a hub for professionals tackling retrofitting challenges. Sponsored by Sustainable Building Services, the Conference spans three days, with content curated from Retrofit Academy CIC on day one and two, and the National Retrofit Hub on day three. Key topics include scaling retrofitting efforts and city regeneration.

The Retrofit Expo, debuting in 2025, showcases innovative solutions for retrofitting, featuring exhibitors like Parity Projects, Corksol, and Trustmark. The event also includes the Big Retrofit Challenge, where innovators present groundbreaking ideas.

EXHIBITORS AND INNOVATION TRAIL

The Innovation Trail offers visitors a chance to connect with industry leaders like Heidelberg Materials UK and LKAB Minerals, exploring sustainable solutions to advance the built environment. Exhibitors highlight products and practices that support circular economy principles and smarter material usage.

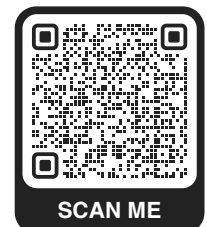
IMPACT 20X20: CALL FOR PAPERS

Futurebuild 2025 introduces Impact 20x20, inviting visionaries to present bold sustainability ideas through dynamic Pecha Kucha-style sessions. Submissions close on December 13, 2024.

WHY ATTEND?

Futurebuild 2025 is an essential event for architects and specifiers aiming to drive industry transformation. Combining practical insights with innovative solutions, the event equips attendees to make meaningful contributions to sustainability and the built environment's future.

[Join the movement and make your impact - Register here.](#)



making a

POSITIVE

IMPACT

on the built environment

Introducing Impact - the theme driving Futurebuild 2025.

Impact reflects our shared commitment to positive change in the built environment, with a focus on sustainability and innovation. By visiting Futurebuild 2025, you'll not only experience this transformation but also take part in it.

Discover cutting-edge solutions, connect with industry leaders, and gain the tools and insights to make a meaningful impact in your work and beyond.

Register today



IMPACT NOW

www.futurebuild.co.uk

BASEMENT SPECIALIST CRYSTAL KEEPS FAITH WITH WYKAMOL -TRITON RANGE INSIDE & OUT

Crystal Damp Proofing & Basements, based in Croydon, Surrey, is tackling a unique project involving damp issues in a 40-year-old property with basement areas beneath the house and rear. Using the reliable Wykamol-Triton range, including BBA-approved CM8 and CM20 studded waterproofing membranes, the team



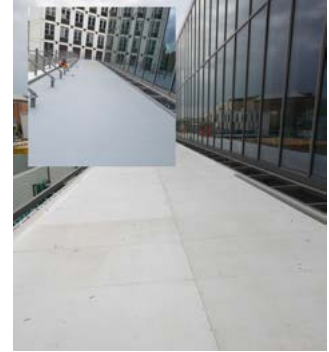
is addressing long-term damp by installing drainage membranes on walls and floors. Water is directed to perimeter Aquachannels connected to a sump with an Aqua Pump kit, ensuring effective water management.

Founder and Managing Director Lukasz Mikolajczyk, who launched the company in 2021, praised Wykamol's support and the durability of the Triton range. The project also involves laying floor screeds, constructing metal stud partitions, and applying 130 square metres of render finishes. XPS insulation and CM20 membranes will be added to the lightwell. Wykamol provides tailored project guidance and technical support, ensuring reliable solutions for basement waterproofing challenges.

www.wykamol.com

BELFAST TRANSPORT HUB FEATURES MAGPLY A1 FIRE RESISTANT ROOF BUILD-UP

One of Northern Ireland's major infrastructure projects is nearing completion, with Thornton Roofing installing a PVC system on an intermediate roof deck. Originally specified for marine-grade plywood, Thornton recommended A1-rated, non-combustible Magply boards from IPP Ltd. to meet fire regulations. This £340m Translink transport



interchange, built by Farrans Sacyr JV, includes eight railway platforms, 26 bus stands, and public facilities. Thornton, based in Antrim, specializes in large-scale private and public sector projects across Ireland and the UK, sourcing the 20mm Magply boards from distributor JP Corry.

Covering 850 square metres, the roof deck features screw-fixed Magply boards, chosen for their A1 fire rating and durability, over steel purlins. Contracts Manager Gareth Simpson highlighted Magply's ease of installation and suitability for high-performance applications. Backed by BBA certification, Magply offers a fire-safe, versatile alternative to plywood, ideal for waterproofing, cladding, and interior reinforcement where fire safety is critical.

www.magply.co.uk



Creative software for architecture



Award-winning photo editing, page layout, graphic design and illustration software for Mac, Windows and iPad.

- + Affordable and flexible licensing
- + Straightforward deployment
- + Priority customer and tech support
- + Site-wide and at-home access on all operating systems
- + All major file formats supported

affin.co/architects



THE ELEGANCE OF PARIS BALCONIES: A MODERN TOUCH FOR ANY HOME

In the quaint town of Marsden, Huddersfield, four Paris balconies from CRL were installed on to fully renovated houses earmarked for renting out. The choice of Anthracite Grey Reveal Mounted balconies was deliberate, aiming to create a sleek appearance.



The decision to opt for reveal mounting not only accentuated the clean lines of the structures but also ensured uniformity across all installations.

According to the installer, this method not only kept all panels matching and looking identical but also eliminated the need for mounting on to uneven surfaces, saving time and resources that would have been spent on packing with silicone.

The CRL Paris Balcony system is designed to be used with 13.52mm, 17.52mm & 21.52mm toughened laminated. The 1200mm long profiles can be face fixed or reveal fixed to brickwork, concrete or steel and a top cap rail is not required as the toughened laminated glass offers extra protection if one single pane fails.



For more details call CRL on
01706 863600, or visit
www.crlaurence.co.uk

STAINLESS STEEL SINKS • WORKTOPS • CABINETS • SHELVING



the stainless steel specialists
www.gecanderson.co.uk



DIY • Trade • Business

"Let us surprise you - Lowest Online Prices"

- Ironmongery & Builders Metalwork
- Silicones/ Sealants
- PPE
- Lowest Prices
- Next Day Delivery throughout the UK



Home of **TURBOQWIK** and **RHINO**
THE PRECISION MULTIPURPOSE WOODSCREW SCREWS

0121 559 8866 • sales@screwshop.co.uk



The
difference
is in the
detail

Learn about what makes our products different...
www.premierloftladders.co.uk/difference
0345 9000 195 | sales@premierloftladders.co.uk

ACHIEVING MAXIMUM BUILDING ENVELOPE EFFICIENCY WITH ARMATHERM™



Striving for net zero? Structural thermal breaks manufacturer, Armatherm™, can support architects, specifiers and designers to ensure buildings are constructed with maximum efficiency in mind.

Thermal bridging poses a significant challenge in construction projects, because it enables the passage of energy to escape and enter a building, resulting in compromised thermal efficiency - and with it, a whole host of other issues.

To prevent this, Armatherm™ offers a range of solutions which have low thermal conductivity and high strength, and are designed to prevent thermal bridging. These solutions minimise energy loss, providing a cost-effective and reliable solution.

The range from Armatherm™ includes Armatherm™ 500, a high strength, thermoset polyurethane manufactured in several densities.

Ideal for: foundations, parapets and more

The Armatherm™ Z girt is another innovative, thermally broken cladding support connection solution which prevents excessive heat flow and potential condensation problems otherwise associated with thermal bridging.

Ideal for: cladding and building façades

Armatherm™'s innovative FRR material provides a combination of low thermal conductivity and high compressive strength, and has been used in hundreds of structural steel framing connections transferring load in moment and shear conditions.

Ideal for: interior and exterior steelwork, concrete and roof penetrations



Armatherm™ also offers a design service, collaborating with architects, specifiers, and designers from the project's conception, ensuring that thermal breaks are integrated into the initial designs. By addressing potential thermal bridging points at the earlier stages, architects can make informed decisions that optimise energy efficiency, without compromising on functionality or aesthetics.

As well as recommending the best thermal break materials and identifying where they will be required to combat thermal bridging.

► **Explore the Full Range of Thermal Break Solutions**
<https://www.armatherm.co.uk/thermal-break-materials/>

Speak to Armatherm™'s Expert Team
<https://www.armatherm.co.uk/contact-us/>



Thermal Bridging Solutions



Armatherm™ is one of the leading suppliers of structural thermal break materials for the construction industry. Our goal is to provide architects, engineers and contractors with the knowledge and materials to effectively address thermal bridging issues. Armatherm™ thermal break materials have low thermal conductivity, high strength, and have been designed and tested to carry the loads, whilst reducing the cold bridge within a building envelope.



APPLICATIONS:

ARMATHERM™ MASONRY SHELF ANGLE

Material Type: **ARMATHERM™ FRR**

ARMATHERM™ COLUMN BASE

Material Type: **ARMATHERM™ 500**

ARMATHERM™ FOUNDATION WALL

Material Type: **ARMATHERM™ 500**

ARMATHERM™ BALCONY CANOPY

Material Type: **ARMATHERM™ FRR**

ARMATHERM™ PARAPET ROOF PENETRATION

Material Type: **ARMATHERM™ FRR**

ARMATHERM™ CLADDING

Material Type: **ARMATHERM™ Z GIRT**



Call **+44 (0) 1274 591115** for all enquiries

✉ info@armatherm.com

🌐 armatherm.co.uk

Call **+353 1 697 1509** for all enquiries

🌐 armatherm.com/ie

INNOVATIVE AND BEAUTIFUL STONE WORK SOLUTIONS



At Stoneworld, we our investments into the latest precision masonry technology mean we offer our clients innovative and beautiful solutions for interiors and exteriors in the finest natural stone available. Whether you're looking for classical or contemporary, we have the knowledge and technology to work with you from start to finish. Here's how:

Our 3D templating technology means we can visit your client site and take accurate and precise measurements of the space, alongside designs or drawings. Our experts can take this information and help you choose a design and material which will best achieve the desired result.

Next, our team of experts work with you to help make your vision a reality. We can advise on edging, material, finish and much more, with over two decades of experience with natural stone, your project is in good hands.

Our masonry team then create your staircase in premium natural stone. With state-of-the-art machinery, and our highly skilled team, we are able to take on large, complex projects with ease, from residential to commercial and public realm. Our stone is cut, edged and finished to your specification, taking into account technical requirements such as slip resistance and thickness, alongside bespoke features such as embedded lighting.

Finally, we also provide installation meaning you don't have to worry about a thing. Our team can take care of every step of the process; templating, designing, creating and installing your client's dream centrepiece with care and expertise from concept to creation and beyond.



Find out more about our masonry capabilities on our website at www.stoneworld.co.uk, or contact our team on 01844 279274.

SCAN ME

STONEWORLD

BESPOKE MASONRY SERVICES

STEPS | COPINGS | PIER CAPS | SCULPTURE | PAVING | WALLING | ROCKERY

www.stoneworld.co.uk (01844) 279 274 sales@stoneworld.co.uk



WOODBURNING & MULTI-FUEL STOVES

BUCKINGHAM II

£358.80

inc.VAT



17 GREAT STYLES
IN STOCK

**BUILT TO DEFRA STANDARDS
APPROVED FOR CLEAN AIR ZONES**

All Stoves are built to Defra Standards and comply with Eco Design 2022 emissions and efficiency requirements for clean burning (BS/EN13240)



A

7.9kW

REGAL IV
£658.80 inc.VAT



A

5.5kW

BLAKENEY
£478.80 inc.VAT



A

11.9kW

PEMBROKE II
£934.80 inc.VAT



A

5.5kW

BOXWOOD II
£682.80 inc.VAT



A+

4.9kW

DORCHESTER
£718.80 inc.VAT



A+

5kW

BARREL III
£334.80 inc.VAT

**STAINLESS STEEL 1200W ASH
VACUUM CLEANER**

- 12 Litre capacity
- Built in 1200W motor
- Compact and easy to use



£65.99
inc.VAT

**BIG CHOICE OF
BRITISH MADE FLUES**



**LOG SPLITTERS FROM ONLY
£294.00 INC VAT**



SEE THE RANGE ONLINE & IN OUR FRIENDLY STORES

VISIT
STORES NATIONWIDE

CALL
0115 956 5555

BROWSE
machinemart.co.uk



HOUSE IN A MEADOW

The home is situated on a 30-acre wooded parcel in the town of North East, New York. The site's defining features are a ridge at the property's highest elevation and a large meadow 15' below.



The meadow is ringed by trees and has long, westerly views out to the Catskill Mountains. The ridge to the east is dotted with wildflowers and rocky outcroppings. Access to the house is via a winding driveway that climbs the steep eastern edge of the site and terminates at the top of the ridge. In addition to the main home, the design brief also called for a guest house and pool.

At the outset of the project, the determination was made to locate the house at the lower meadow level and along the baseline of the ridge, eliminating the need to clear existing trees. This shielded the building from prevailing winds and views at the higher arrival elevation, providing a serene and secluded environment for the home. With the house positioned, a 20' wide x 100' long adjacent section of land was removed from the downslope side of the ridge. The excavated area was then retained by a cast-in-place concrete wall, creating a flat pad between the house and the ridge. This space functions as an intimate outdoor room and forecourt, offering a contrasting experience to the wide-open meadow setting to the building's west.

To foreground the colors and textures of the site, the home and guest house were developed as muted, black gable-shaped structures. This was achieved by taking a totalized approach to the exterior materials, cladding the buildings' facades and roof surfaces in the same black corrugated metal. The waves of corrugation give a subtle texture to the forms. Open eaves at the roof express black painted rafter tails, supplying another layer of detail and rhythm to the project. Large expanses of glass offer views through the house to the landscape beyond, adding visual interest and depth to the building's simple barn-like shape. Orientation-wise, the long exposures of the home run parallel to the ridge, maximizing opportunities for views out to the east and west. The entrance hall is centrally located in plan and creates a buffer between two primary bedrooms at the north end of the building and the communal spaces to the south. Two smaller bedrooms bookend the southern side of the house.

Floating in the communal spaces are four linear blocks of millwork wrapped in a warm Douglas fir veneer. The blocks establish boundaries between public and private zones and contain essential components of the house. Each has a slightly different character in terms of their height, proportion, and materiality. Their functions are: housing the attic stair, enclosing the living room fireplace, providing kitchen counter surfaces, and concealing the kitchen appliances. The kitchen counter and fireplace blocks incorporate cast-in-place concrete elements for their durability and fire-retardant properties. In addition to the wood-clad millwork, the interior palette is composed of white walls and ceilings, gray concrete floors, and dark bronze aluminum sliding door frames. To add variation to spaces within the home, the ceiling above the living, kitchen, and dining room has been given a gable-shaped vault, while the private rooms have more intimate ceiling heights. The vault's eaves and peak are softened into gentle curves, diffusing the light spilling onto its surfaces, giving it a cloud-like appearance. On either side of the common areas are two 16' wide banks of sliding glass doors, providing access and immersive views of the meadow to the west and the ridge to the east. The pool and guest house are located in the meadow, while an outdoor dining space is situated between the house and the ridge.

www.group-projects.net

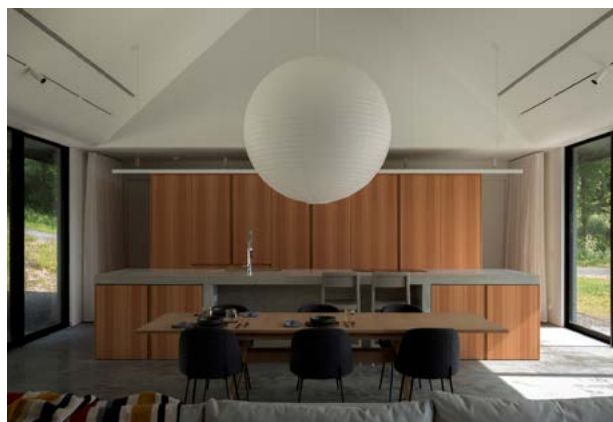
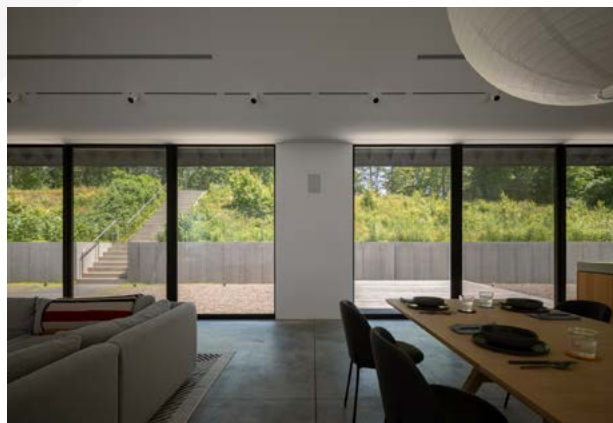
PROJECT DETAILS:

Architects: Group Projects Architecture

Area: 2800 ft²

Year: 2024

Photographs: Nicholas Venezia





TRANSFORM YOUR BATHROOM IN 2025: BOLD TILES, DEEP HUES, AND NATURE-INSPIRED DESIGNS

As we look ahead into 2025, bathroom design is poised for an exciting transformation, reflecting the changing desires of homeowners who seek both style and functionality in their personal spaces.

From the rise of bold, statement designs to the calming influence of serene hues and the integration of natural elements, Bekki Griffiths, Senior Marketing Communications Manager at Wetwall, delves into the trends set to dominate bathroom design in 2025:

STATEMENT DESIGNS

“Statement designs will take centre stage in 2025, driven by homeowners transforming everyday spaces into eye-catching retreats. Expect to see oversized, bold patterns and intricate mosaics that serve as the room’s main feature, rather than just background décor. Designs with striking textures, like 3D effects or glossy metallic finishes, will add a touch of luxury and personality to your bathroom.

“Customisation will also be a big trend, with homeowners choosing tiling that reflects their unique style. Thanks to tile effect bathroom wall panels offering a wide range of design possibilities, you can achieve the look without the hassle of grout, making them incredibly easy to clean. Wetwall’s Blue Scallop and Stella Rosa are the perfect designs to infuse personality into your bathroom.



SERENE HUES

“As we move into 2025, serene hues are set to continue their influence on bathroom design, with rich, deep colours like midnight blue, charcoal grey, and forest green at the forefront. This shift reflects a growing desire to transform bathrooms into tranquil retreats amidst our hectic lives. The depth of midnight blue evokes a sense of calm, making the space feel like a serene retreat. Charcoal grey, with its moody undertones, adds sophistication and a soothing atmosphere that envelops you in comfort. Meanwhile, forest green connects the indoors with the natural world, fostering a tranquil, grounding effect that brings the calming essence of nature into your home.

“Using these tones on walls, floors, and even fixtures introduces a striking contrast to traditional bathroom design, giving the space a modern yet timeless appeal.

“Accent lighting and metallic details will play a crucial role in adding a touch of glamour and warmth to spaces too. Expect to see clever use of dimmable lights and LED strips to highlight textures and create a soft, ambient glow. Combined with plush materials and matt black fixtures, darker shades such as Wetwall’s Greystone Marble, Tempesta and Fossil Stone will not only elevate the style of your bathroom but also make it a perfect retreat for relaxation and indulgence.



MIXED MATERIALS

“Expect to see inventive pairings, like marble vanities set against concrete walls or wooden accents combined with glossy finishes. Mixed materials will be used to create focal points and add dimension, making bathrooms feel more bespoke and thoughtfully designed. By incorporating a variety of textures, designers can create spaces that are both contemporary and inviting, ensuring your bathroom stands out with a unique and stylish flair. This effect is easily achieved with wall panels, which are available in a range of styles, are cost-effective, and perfectly complement the opulent, layered looks of modern bathroom renovations.

“Mixed materials will become a defining feature of bathroom design, where blending various textures will craft a rich, layered feel.

BIOPHILIC DESIGN

“The influence of biophilic design will continue to shape bathroom design in 2025, drawing inspiration from the natural world to create calming and restorative spaces. Elements such as earthy textures, irregular shapes, and natural colour palettes will bring the outdoors inside, fostering a sense of tranquillity that is increasingly important as people spend 90% of their time indoors, according to World Health Organisation statistics.

“To enhance this connection to nature features like stone-like tiles, wooden accents and integrated plant elements will be prominent. These elements

echo the soothing effects of natural environments, which have been shown to improve mental wellbeing and reduce stress.

“Wood-effect bathroom wall panels such as Wetwall’s Linear Oak is ideal for those who want to incorporate the warmth and texture of wood into their interior. Available in a variety of grains and shades, Wetwall’s panels offer a perfect alternative to traditional tiles. Requiring no grouting, which makes them easy to install and maintain, they are an effortless way to add natural charm to your space.



BACK TO THE PAST

“In 2025, we expect to see a nostalgic blend of the best of 70s and 90s home decor, creating spaces that are both retro and modern. This “Back to the Past” trend resonates with the current mood of the nation, which is steeped in nostalgia, as reflected in the resurgence of 90s-inspired fashion, celebrity comebacks, and retro aesthetics. The trend brings together the luxurious textures and bold colours of the 70s with the playful minimalism of the 90s, resulting in a harmonious and eclectic design aesthetic.

“Marble, with its timeless appeal, serves as the perfect backdrop for these lively colours. The natural veining and cool tones of the marble provide a sense of luxury and grounding, while

the unexpected bursts of colour add energy and personality to the space.

“Consider a marble vanity set against a backdrop of soft pink tiles such as Blush Tile. This trend celebrates the playful contrast between the refined and the bold, the old and the new, creating spaces that feel both familiar and refreshingly contemporary.

“Whether you’re incorporating Wetwall’s Linate Terrazzo or Industrial Concrete wall panels, the key is to mix and match, creating a cohesive look that feels distinctly your own.”

► **For more information or to view the full range of bathroom wall panels available from Wetwall, please visit: www.wetwall.co.uk www.bushboard.co.uk**

CLEARWATER®

Interiors

THE TRANSFORMATIVE



POWER
OF COLOUR

REARO: REDEFINING SPACES WITH EXCEPTIONAL SURFACES

Hailing from the spectacular Shetland Islands, Rearo is a family-run business dedicated to crafting exceptional surfaces. Since 1991, we've transformed spaces across the UK, leaving a legacy of quality and innovation.



CRAFTED IN GLASGOW, TRUSTED NATIONWIDE

At our state-of-the-art, 67,000-square-foot production facility in Glasgow, a dedicated team of skilled craftspeople brings our vision to life. Our product portfolio includes wall linings, toilet cubicles, vanity units, IPS systems, worktops, and solid surface products.

Innovation is at the heart of everything we do. Our design team leads the way, exploring new materials and trends to ensure our solutions meet the evolving demands of commercial spaces.

Wall Linings for Every Need: Rearo provides a wide range of wall lining solutions that enhance commercial spaces. Our systems are tailored to meet the specific needs of various sectors, prioritising hygiene, durability, and style.

Our flagship **Selkie Board** is a versatile solution for both residential and commercial spaces. Durable and easy to maintain, it's perfect for high-traffic areas like hotels, restaurants, and retail environments.

Rearo offers a variety of wall solutions, from our **Bioclad** antimicrobial wall lining system to the innovative **Magnetik** system which transforms walls into interactive surfaces. All are easy to install and maintain.

WASHROOM SOLUTIONS YOU CAN TRUST

Rearo offers a range of stylish and durable washroom cubicles to suit various commercial

settings. From healthcare facilities to hospitality venues, we have solutions for every need.

Our cubicles prioritise privacy and safety, with features like floor-to-ceiling designs, emergency release doors, and lift-off functionality. We offer made-to-measure options, including premium materials, to match any aesthetic.

Whether you need a quick, off-the-shelf solution or a fully bespoke design, our range has you covered. From the luxurious **Triumph** to the practical **RapidFit**, we have options for every project. Our **Nurture** range is specifically designed for nurseries, offering compact yet private solutions for high-traffic early years settings.

SUSTAINABILITY & LEGACY

We cater to projects of all sizes, prioritising sustainable practices through meticulous supplier selection. With over 30 years of experience, Rearo is more than a manufacturer - we're your partner in transforming spaces. Let us help you create a lasting legacy.

LET'S TRANSFORM YOUR SPACE

From site measurements to detailed specifications, our expert team is here to support your project every step of the way. Contact us today to discover how Rearo can simplify your specification process and bring your vision to life.

► commercial@rearo.co.uk
www.rearocommercial.co.uk
 Call us on 0141 440 0800



REARO[®]

WASHROOM COLLECTION

rearocommercial.co.uk



FOR THE **MOST**
SOPHISTICATED SPACES.

LAMINAM'S TOP FIVE BATHROOM TRENDS FOR 2025

And how to use the material of the moment, porcelain to create these key looks

Cladded vanity units, bold bookmatching and minimal luxury are top bathroom trends for 2025

Global leader in the design and production of large sized porcelain surfaces, Laminam offers a range of designs that are practical and beautiful, ideal for any upcoming bathroom project. Whether for a new family bathroom or luxurious en-suite, **Laminam's R&D Director, Claudio Corniola**, shares his predictions for the top five bathroom trends for 2025:

1. CLADDED BASINS AND VANITY UNITS

Inspired by five-star hotel luxury, cladded vanity units have become increasingly popular in recent years, especially in en-suite bathrooms. This trend is set to become even bigger in 2025, as homeowners look to recreate the spa-style sanctuary of a favourite holiday or luxury break at home. Twin basins also make a stunning statement within a bathroom scheme, especially when clad in a stone surface such as porcelain. Durable and hardwearing, it also creates a sleek and seamless look that flows effortlessly when paired with the same surface for countertops, splashbacks, showers, wall cladding and flooring. Porcelain is an ideal material for bathrooms, as it is non-porous so doesn't require sealing and as well as being water resistant, it is stain, scratch, moisture and humidity resistant. The stunning marble effect of seamless porcelain surfaces will also bring a luxe look to any bathroom or en-suite and for 2025, let the material take centre stage with fresh or warm whites with delicate veining or grounding earthy tones to bring a sense of the outside, in.



Laminam Surface - New Slate Series - Ankara



Laminam Surface - I Naturali Series - Calacatta Oro Venato

2. BOOKMATCHED SURFACES

Laminam's porcelain is perfect for making a statement in the bathroom. The large-format slabs can be laid horizontally or vertically for walls and floors and 2025 will see a rise in the use of bookmatched patterns for large areas such as behind a freestanding bath, as a basin splashback or in a large walk-in shower area. Bookmatching allows for seamless continuity with no visible joints, which has the added benefit of being impervious to germs and bacteria while also making cleaning easier thanks to fewer grout lines. The distinctive and eye-catching look is created by adjoining two or more slabs of stone cut from the same block, right next to each other for a striking mirror-image effect. Laminam has over 20 designs that can be bookmatched.

3. NATURE INSPIRED SPACES

With over 291,000 #biophilicdesign posts on Instagram, the trend for bringing the outside in looks set to stay for 2025. There are so many benefits to creating a natural and organic look and feel within the home - it helps to create a sense of calm and mindfulness, connecting us to nature and providing a welcome retreat from the hectic world outside. Adding plenty of potted and hanging plants also has the benefit of improving air purification, absorbing excess moisture and balancing humidity, particularly important for bathrooms and wet rooms.



Laminam Surface - IN-SIDE Series - Pietra Piasentina Taupe



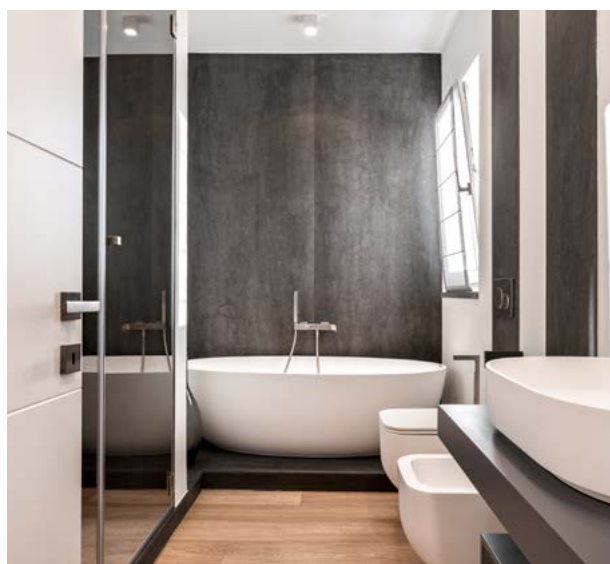
Laminam Surfaces - IN-SIDE Series - Terra di Matera {back wall and flooring} and Terra di Saturnia {bath and shower wall}

5. MINIMAL LUXURY

Creating a calming and spa-like experience at home, minimal luxury means paring back to the essentials but ensuring these essentials are of the highest quality. Think bathrooms with a freestanding sculptural shaped bath, concealed shower fixings, wall-mounted basin taps that leave the countertop clear and plenty of storage to hide everything from view. This style of bathroom also has the benefit of letting the surfaces sing, with porcelain's marble effects and authentic Italian look taking centre stage.

4. OPEN-PLAN BATHROOMS

One of the biggest trends for 2025 will be opening up the bathroom, removing shower doors and creating a seamless and open wet room either on its own or within a bathroom or en-suite, achieving a spacious and airy feel. Sleek and modern in aesthetics, the effect is also incredibly functional, especially when Laminam's porcelain slabs are used for both walls and flooring. With no visible joins, the room is easy to clean as well as ultra-hygienic, as there are no grout lines for germs and bacteria to hide in.



Laminam Surface - I Naturali Series - Pietra di Savoia

TAKING A QUANTUM LEAP INTO THE FUTURE OF TOILET FLUSH VALVES

Thomas Dudley has recently launched Quantum, a revolutionary push-button operated, leak-free syphonic action toilet flush valve. This cutting-edge product marks a significant advancement in toilet flushing technology, delivering unmatched efficiency, reliability, and water conservation.

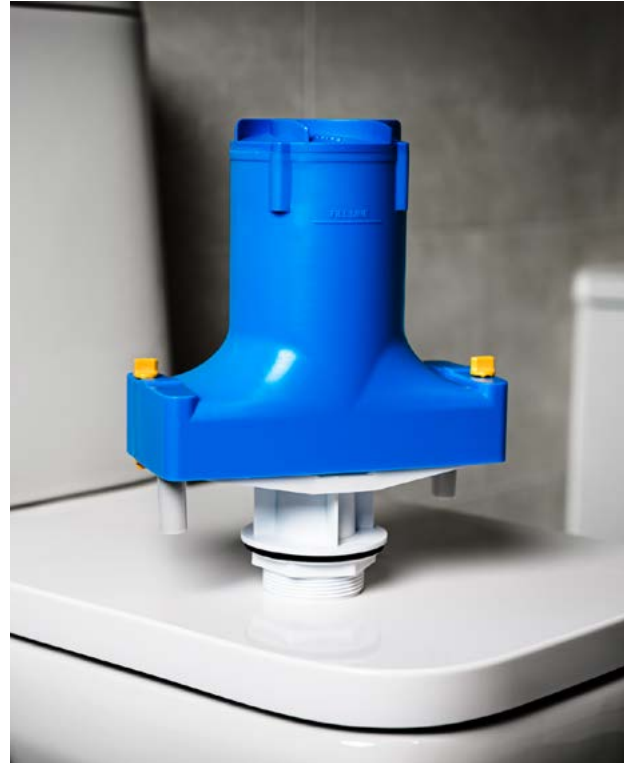
Key Features of Quantum:

Innovative Pushbutton Operation: Quantum is the first mechanically activated syphon with a user-friendly pushbutton mechanism, available in various styles. This modern design ensures a convenient and intuitive flushing experience, providing a reliable and consistent flush every time.

Leak-Free Syphonic Technology: Engineered in the UK, Quantum uses advanced syphonic technology to lift water without power assistance, eliminating leaks and minimizing water wastage. This leak-free design enhances valve durability and supports water conservation efforts.

Water Conservation Commitment: Quantum reflects our dedication to sustainability. In the UK, enough water leaks from toilets to fill 158 Olympic sized swimming pools EVERY DAY or to put it another way, enough water is leaking from toilets in the UK to fill over 4 MILLION baths EVERY SINGLE DAY. Quantum's syphon technology and pushbutton mechanism optimise water usage, helping users reduce their environmental footprint and lower water bills.

Easy Installation and Maintenance: Quantum is designed for hassle-free installation and minimal maintenance, making it ideal for both professionals and end-users. This ensures that everyone can benefit from this state-of-the-art technology with ease.



Durable Construction: Made from high-quality materials, Quantum is built to withstand daily use. Its robust construction guarantees longevity, making it a reliable and cost-effective choice for both residential and commercial applications.

CHRIS SLEZAKOWSKI, BUSINESS UNIT DIRECTOR, SAYS:

"We are thrilled to introduce Quantum, the first in a new line of Pushbutton Operated Leak-Free Syphonic Toilet Flush Valves. This product redefines the flushing experience and addresses key concerns related to water conservation and reliability. Quantum exemplifies our commitment to innovation and sustainability, providing solutions that make a positive impact."

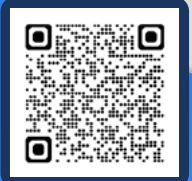
Quantum is not just a product; it's a leap towards a more efficient and sustainable future in toilet flushing technology.

► For more information visit www.thomasdudley.co.uk

Dudley

NEW QUANTUM

THE **WORLD'S FIRST** PUSH BUTTON SYPHON



Leak-Free Syphonic Technology



Optimises Water Usage



Easy Installation & Maintenance

 **MADE IN BRITAIN**®

PAUL BERNIER ARCHITECTE

The Des Lauriers House, designed by Paul Bernier Architecte, is set in a hilly, partially wooded rural setting adjacent to the Bromont Olympic Equestrian Park.



Adopting a configuration typical in this region, the house is composed of three gabled volumes, resting in an open field with views of the mountain and the equestrian park. The layout reflects a characteristic typology of rural building clusters and delimits protected outdoor spaces.

Two of these volumes - the main house and the garage/guest house - are built of brick and stone. The third pavilion is a small, cedar-clad barn. These simple traditional shapes, combined with natural materials and a contemporary reinterpretation, lend the house an impression of timelessness.

RELATIONSHIP TO THE SITE

The stone walls, which act as retaining walls and extend from the house's foundations out into the landscape, also help to anchor the house in its environment.

The house and garage volumes are connected by a fully glazed link, emphasizing the distinct nature of each building. This glass box serves as the main entrance. As you approach it, you can see the plain beyond the house.





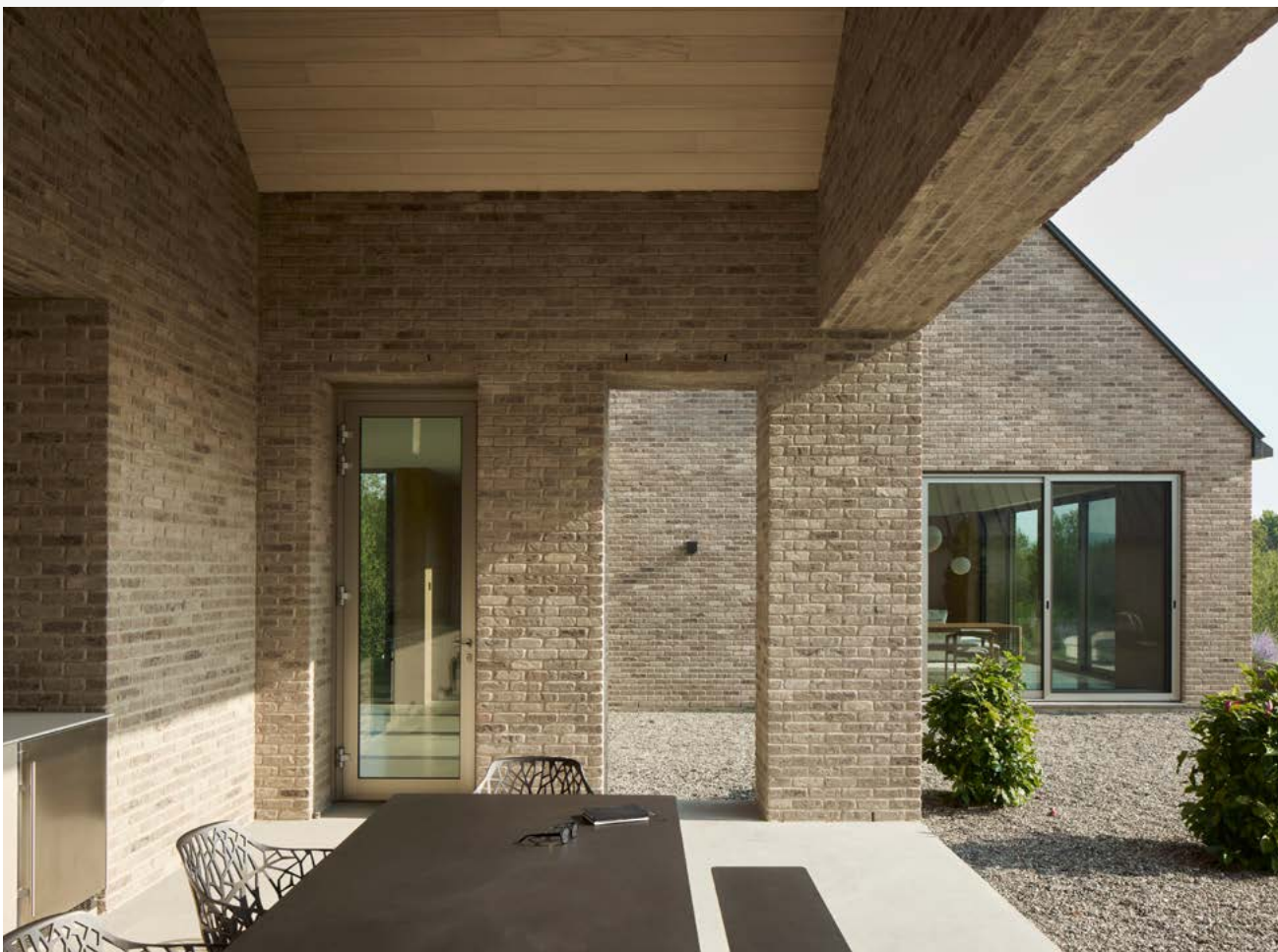
The west end of the garage pavilion opens onto the landscape, housing an outdoor kitchen and dining area - an alcove surrounded by massive brick walls and pillars, and sheltered by a high, cedar-clad cathedral ceiling. A large, west-facing opening offers views towards the mountain and the sunset. On the south side, a brick claustra filters natural light, while also providing privacy. A small slot, up high in the thick brick wall, allows heat to escape during summer.

FLOW

From the glazed entrance hall, the living area is accessed via a chicane created by a wooden volume that acts as a screen. One then discovers the heart of the house, a large space that extends upwards, taking advantage of the entire volume of the house's gabled structure. Horizontal openings frame views of the landscape and provide access to nearby outdoor areas. A band of white oak panels covers the perimeter walls, while integrating storage, windows, and a stone niche for the fireplace. Above, the vaulted ceiling is covered with lime plaster.



The kitchen, set back, yet open to the living room, is simple and minimalist. Its white oak cabinetry delimits the space where an island made of stone sits. From the kitchen island, while cooking, one can enjoy a wide view of the plain and the mountain. Another large window above the counter lets in the morning light and offers a view of the woods.



A passage leads from the living room to two bedrooms, including the master suite, secluded and quiet, facing an unobstructed view of the equestrian park.

From this hallway, a staircase connects the home's three levels. The stairwell is illuminated by a large dormer at the top. Floating wooden steps allow natural light to flow through each level all the way to the basement. Upstairs, there is an exercise room and an office overlooking the living room and the surrounding landscape. The basement, benefiting from the slope of the land, has west and north-facing windows for three bedrooms and a family room.

On the opposite end of the house, accessed through the entrance hall, are the outdoor kitchen and dining area, garage, and a guest suite above the garage.

MATERIALITY AND DURABILITY

The materials used inside - white oak, lime plaster, and stone - are timeless, but the clean lines and minimalist approach are contemporary. The exterior of the house is made of brick, stone, steel, and cedar. Both inside and out, the materials are natural and durable. The deep openings, the massive masonry pillars, as well as the stone walls and window frames, give the whole a feeling of stability and perennality.

"We aimed to imbue this house with a sense of calm, a peaceful and contemplative atmosphere, as this is what we felt upon discovering the site for the first time," says Paul Bernier.

➡ www.paulbernier.com



TECHNICAL SHEET

Project Name : Des Lauriers House
 Location : Bromont, Québec
 Area : 7320 pi2 (680 m2)
 Completion : 2024
 Design team : Paul Bernier, Patrice Lebel,
 Noémie Robitaille
 Structural engineer : Alain Mousseau
 (Calculatec)
 Contractor : Constructions Boivin
 Photographer : James Brittain

BRING THE INDOORS, OUTDOORS. WITH A CROCODILE WINTER GARDEN

A Glass Veranda along with our fully enclosed Wintergardens, offer a unique extension to your living space, every season of the year.

Day or night, rain or shine, a Crocodile Winter Garden is a simple-to-erect, fully enclosed, all-British structure that allows you to bring the outdoors, indoors and benefit from your garden whatever the weather.

Now you can get together with friends and family in contemporary surroundings. Transform your home into the perfect place to dine and drink. Choose custom designs and finishes. Fit optional awnings and blinds and get truly creative.

Dine in the garden, watch the kids play, share family moments or let Dad put his feet up.

See the birds, the grass and the trees. Enjoy the flowers and catch some regular morning sun. Connect to nature and feel part of the world.

When you choose a Crocodile Winter Garden you'll immediately receive a ten-year warranty that covers it for defective materials, labour and any work carried out by our engineers during the install. They have a range of options to defer and spread your payments.

Designed and manufactured in the UK, This means we control quality in production and we can give far better aftercare.

Crocodile products combine quality and robust parts with contemporary style and our trademark service. Fit the best and make your home more desirable, sociable and secure



So find out how a bespoke Crocodile glass Veranda or Winter garden will add style and elegance to your home. by calling 0800 011 2234 and they'll send a local Crocodile expert to you.

Arridge Garage Doors Since 1989



- Top Brands
- Discounted supply to trade and retail
- Quality installation service available

 **REVIEWS**
4.82 Rating

sales@arridgegaragedoors.co.uk
arridgegaragedoors.co.uk • 01691 670 394

TOUCH

IRONMONGERY LTD



www.atochofbrass.co.uk

210 Fulham Road, Chelsea London SW10 9PJ

CELEBRATING 40 YEARS

One of London's leading Architectural Ironmongers

Originally called "A Touch of Brass", TOUCH changed their name in 2003 in reaction to advancing market changes in architectural Ironmongery to reflect the broader range of products and finishes that they sell.

In fact today Touch supply 20 different finishes including Brass, Satin Brass, Polished Chrome, Polished Nickel, Satin Nickel, Copper, BMA, Antique Brass, Black, Pewter, Ceramic, leather, Stainless Steel, Satin Stainless Steel, Gun Metal & 4 different shades of Bronze and the list keeps growing. Whatever finish you require, Touch can help you get the right look.

Touch occupy their recently refurbished showroom at 210 Fulham Road, Chelsea, where they stock and display a vast range of their 5,000 products. With a customer base including Architects, Interior Designers, Builders and private Individuals who are interested in the quality end of the Ironmongery market, the company also have a healthy export market to all corners of the world, namely the Middle East, Europe and the Americas.

Touch Ironmongery's owner and founder, Bill Benham, has 42 years' experience in the Ironmongery trade, as does his colleague Jim Haselup. Saleem Qureshi is the newest member of our team and has 21 years' experience, meaning their knowledge is unrivalled in this industry.

The range of products supplied by Touch date from circa 1640 French (Louise XIV) and cover all subsequent periods (Georgian, Edwardian & Victorian), Art Deco and contemporary pieces also make up the product ranges.

Touch showcases the very best of British manufacturing; the best ranges are still produced in the Midlands by craftsmen in factories dating back 200 years or more.

Touch Ironmongery have recently become suppliers for **Designer Doorware (Australia)** Who have beautiful products with a cutting edge design Metal, Wood and concrete. We also have the exclusive rights to sell the **Olaria (Barcelona)** range in the UK.

Olaria make all our bespoke products, they have incredible levels of workmanship.

Touch also sell European manufactured goods which are considered to be of a very good quality.

With trends continuously evolving new and innovative products are constantly under development.

Touch understand that keeping up with the fashion-shifts is imperative in order to provide every customer with the best solution for their requirements.

Ironmongery can be a difficult and complicated aspect of a building project, as a result Touch aim to take this awkward aspect and make it user friendly and clear to understand by offering an on-site service where they carry out a detailed door by door, window by window, room by room Ironmongery schedule, highlighting all requirements and identifying all requirements.

Restoration is a large part of the business Touch will undertake complete Ironmongery refurbishment projects, and can restore old paint covered door furniture to their former glory, looking as good as new again at a fraction of the cost to replace.

For more information about Touch Ironmongery or to arrange a showroom visit please call 0207 351 2255 or alternatively visit www.atochofbrass.co.uk



BRITISH & EUROPEAN MANUFACTURERS SUPPLYING THE FINEST QUALITY IRONMONGERY

Touch combine traditional skills with modern manufacturing techniques to produce the most beautiful, quality fittings, built to stand the test of time.

As well as specialist bespoke items, Touch supply over 1000 products, available in 23 different finishes to furnish high end residential and commercial properties, royal palaces, government houses, historic castles and stately homes.

Olaria, available from Touch Ironmongery

www.atochofbrass.co.uk
& www.olariabarcelona.com





LAYER UP YOUR SPACE WITH FOLDING DOORS

With modern folding door applications, homeowners no longer need to choose between open plan living and high energy bills, says David Knollman of Brio UK.



The winter months bring with them a period of cosy family nights, sprawling holiday parties and fun festive gatherings. During this time, folding door applications can play an important role in homes by enhancing the style of living environments and creating open-plan communal spaces that remain prepared for any occasion.

However, as the festive guests arrive, so too does the cold weather. The extended UK winter can often see a drop in temperature from December to February and sees homes fighting a rise in energy bills in the process. During the cold snap, homeowners can become increasingly conscious of heating their homes, which can be inflated further when needing to heat large, open plan spaces. Where folding door systems facilitate the use of these spaces, choosing the right door system may also offer a host of thermal efficiency benefits, allowing homes to become less reliant on heating during the wintertime.

BE OPEN TO CLOSING SPACE

Thermal insulation is essential to any building project and refers to the products, materials or



techniques that help to minimise the transfer of heat between two spaces. When the cold hits, buildings become reliant on these design features to stabilise internal temperature - usually by limiting the flow of heat and therefore reducing the energy needed to heat multiple rooms.

Characteristically, doors are recognised as the natural walkway between spaces, with external doors providing access to outside environments and internal doors enhancing movement from room to room. At the risk of heat loss in these areas, it's important to consider the thermal efficiency of doorset systems and their materials. Folding doors for example, can support large door set ups around the home, offering unbroken sight lines, greater natural light and unrivalled room flexibility, which is especially useful in guest-filled homes. Equally, they can also create cosy and comfortable environments by sectioning living spaces, whereby rooms and entire areas of a home are effectively closed off when not in use.

In doing so, bi-fold doors can outperform their traditional counterparts in thermal efficiency. When specified correctly, folding doorsets will call upon reliable mechanisms, airtight seals and glazing - each of which can further help installations to retain heat between rooms. Quality hardware systems will ensure a folding door can close to completion and when closed, the sealing mechanisms will produce an airtight seal which can minimise cold air infiltration and reduce heat loss as a result. When paired with low-emission glazed panels that increase solar heat gain, folding door systems can minimise heat transfer between the interior and exterior of homes, lowering energy consumption and helping homeowners to reduce their energy bills during the winter.



INSULATION IN STYLE

The distinctive design of folding door profiles is often a deciding factor for many that choose to embrace these modern doorsets in their home. Yet, just as aesthetics and functionality can improve property value, so too can thermal performance.

Whereas the unique design of sliding doors usually leaves fewer gaps as a way of retaining heat, the energy efficiency of bi-fold doors is more effectively linked to the door system's materials and installation. As such, adopters are encouraged to use trained professionals when installing the doorset, ensuring each element is fitted correctly first time. Similarly, end users are also reminded to review their folding doorsets at regular intervals post-installation. Closer inspections can reveal drafts as a result of damaged seals and weather stripping and whether a door's mechanisms are operating as intended and therefore closing to completion.

In any situation, the combination of poor quality systems and inaccurate installation can leave homeowners paying out more in the long term. The insulation properties of quality folding door applications on the other hand, can help homeowners to enjoy the best of both worlds during the winter - keeping homes heated in style until the sun decides to show itself again.

▶ For more information, visit: www.briouk.com



KISO

EPDM Door & Window Seals

Extremely durable, KISO EPDM climate seals create an effective gap-filling solution for doors and windows.

- Improve energy efficiency
- Available in various profiles
- Prevents air leakage & water infiltration
- Coil lengths from 70 to 225 metres
- Easy to install & customisable

Order today at zeroplus.co.uk
Or call us on **01785 282910**



P SEAL



L SEAL



05 SEAL



141 SEAL



ZEROplus



D SEAL

Barrier Components Ltd

Vistafold Elite

The new **Vistafold Elite** bi-folding hardware offers the joiner multiple improvements over the previous Vistafold system including new finishes and improved adjustability

Features include

- Inline top hung or bottom rolling bi-fold system
- IQ Multipoint lock that is upgradable for smart connectivity
- Upgraded magnetic catch
- Brand new Vista Breakpoint lock available
- Marine grade finishes
- 4 Colour options as standard
- RAL colours available upon request
- Cost effective



www.barrier-components.co.uk
01708 891 515



INTRODUCING



A range of elegant aluminium framed glass screens and doors.

Create stunning light open spaces with hinged, pivot & sliding door options.

Manufactured at our facilities in Hampshire.

We'll create the perfect made to measure solution for your project.



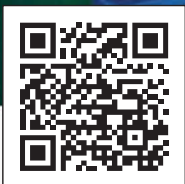
01252 336614 | www.internadoors.com

 Sustainable Door Solutions

Together we build the Future



Scan to know more





PRIYAM RESIDENCE

This 1-acre landscape project for a luxury bungalow was designed to seamlessly integrate nature and architecture, offering residents an inviting outdoor experience for relaxation, entertainment, and everyday living.

The client's primary brief was to create a serene environment that is both functional and aesthetically pleasing. This resulted in a design that balances multiple outdoor zones with a cohesive flow, utilizing an earthy material palette to enhance the connection between the built spaces and nature. At the heart of the design is the goal of blending modern living with natural tranquility. Key concepts focus on crafting distinct spaces that serve multiple purposes while maintaining visual harmony across the landscape. The entrance features a striking feature wall with a sculptural element, designed to set a welcoming tone and serve as a focal point for visitors. This bold statement piece anchors the design.

One of the primary challenges of the project was addressing the natural elevation changes across the site. The sunken seating area, a central feature in the lawn, required careful grading to ensure it is integrated smoothly into the landscape. This space, with a multipurpose table at its core, serves as a flexible area for residents—functioning as a workspace during the day or as a dining area for social gatherings such as barbecues. This thoughtful attention to functional design allows the sunken seating area to spill into the surrounding lawn, creating a seamless transition between the intimate seating zone and the more open lawn space. Adjacent to the bungalow, the design extends to a poolside deck that offers a tranquil lounging





space. The clean lines and warm textures of the deck create a tactile contrast to the reflective surface of the pool, providing a calming visual rhythm. The materiality of the deck connects with the surrounding greenery, offering an understated elegance that enhances the user's experience of the space.

A key feature of the project is the shaded seating area located next to the sunken seating. Above this shaded zone is a viewing deck that creates a visual interplay with the broader landscape. This elevated platform provides a panoramic perspective of the garden, allowing users to experience the landscape from different vantage points. The cascading water feature adjacent to the pergola adds an immersive sensory layer, combining the auditory experience of water. It transforms the space, offering a meditative connection to the surrounding environment. The landscape is designed to cater to a variety of activities, each zone thoughtfully integrated to promote interaction between the residents and the environment.

The spaces work together to guide movement and invite exploration, creating areas that evoke a sense of discovery. Ultimately, this project successfully balances the demands of modern living with the tranquility of nature. The design creates a versatile outdoor experience that transcends simple utility, fostering a deep connection between the residents and their natural surroundings. This landscape becomes more than an extension of the home—it becomes a place of retreat, reflection, and engagement with the environment on a sensory and emotional level.

PROJECT DETAILS:

Architects: Kiasma, a01 Architects

Area: 1115 m²

Year: 2024

Photographs: Vivek Eadara



WOODPECKER FLOORING SHARES FIVE FLOORING TRENDS FOR 2025

Flooring is one of the heavy lifters of interior design. Not only does it set the tone for the entire space, but it has to be practical, functional and stand up to everything that is, quite literally, thrown at it.

And for those homeowners considering an upgrade as we head towards the new year, wood floor specialists Woodpecker Flooring share their insight into what will be big in 2025.

Here Woodpecker Flooring Managing Director Darwyn Ker picked his top five trends to look out for as we head into 2025:

STYLE: WIDE PLANK FLOORING



Wide planks, showcasing the natural grain of wood, will be - quite literally - huge in 2025.

Darwyn said: "Wide planks create an organic, unbroken flow that makes rooms appear more expansive and connected to nature. This style has become a popular choice for open-plan living spaces, which continue to be popular as we enter 2025."

DARWYN RECOMMENDS:

Chepstow Washed Oak Engineered Wood Flooring (240mm) - £155 per m2

COLOUR: WARM, EARTHY TONES

Homes are a sanctuary, and warm flooring sets the tone perfectly. As we head into 2025, homeowners are looking to richer shades to bring a sense of tranquillity to their space.

Darwyn said: "There's been a strong consumer shift towards natural, calming interiors that bring depth and comfort to the home.

"Wooden flooring in earthy tones, such as rich walnuts, honeyed browns, and soft oak shades, embodies this movement, adding a sense of serenity and grounding that consumers seek for a balanced home environment."

DARWYN RECOMMENDS:

Berkeley Burnt Oak Engineered Wood Flooring - £123 per m2





PATTERN: HERRINGBONE AND CHEVRON

In 2025 classic herringbone and chevron patterns provide a sense of structured elegance, making smaller spaces feel curated and luxurious.

Darwyn said: "Patterns like herringbone and chevron add visual interest without overwhelming a space.

"Plus, homes are working harder with multifunctional spaces more commonplace than ever before. Combine pattern with straight boards to zone rooms subtly."

DARWYN RECOMMENDS:

Highclere Feather Oak Engineered Wood Flooring - £118 per m2

FINISH: NATURAL AND MATTE

High-gloss finishes are giving way to natural, matte finishes that feel closer to raw wood and reduce light reflection, creating a softer and more organic look.

Darwyn said: "Our love affair with biophilia shows no sign of abating and homeowners are looking for authenticity."

DARWYN RECOMMENDS:

Chepstow Washed Oak Engineered Wood Flooring - £134 per m2

And Finally: Sustainable Wood Choices

With sustainability a top priority for consumers, sustainably-sourced wood is more than just a design choice; it's a lifestyle commitment.

Darwyn said: "At Woodpecker, all our wood is sourced from responsibly managed forests and is fully certified. But so important is the legacy we leave for future generations, we have created our own Woodpecker Forest of Tomorrow where we have planted 50,000 oak saplings over 200 acres of beautiful countryside."

All ranges available from Woodpecker Flooring.

www.woodpeckerflooring.co.uk

WOOD WAX FINISH



HIGHLY REPELLENT



HIGH COVERAGE



BREATHABLE FINISH



NATURAL INGREDIENTS



ENDLESS POSSIBILITIES OF COLOUR FOR INTERIOR WOOD SURFACES

WWW.OSMOUK.COM



Contact Us

- 0208 616 0575
- sales@woodcraftflooring.co.uk
- www.woodcraftflooring.co.uk
- @woodcraftflooring
- Unit 17, Stirling Industrial Estate, Stirling Way, Hertfordshire, WD6 2BT

About Us

A family business based in the heart of Borehamwood Hertfordshire since 2005. When we say that we offer 'bespoke wood flooring' we really do mean that it's possible to have something unique for your home or business. Every floor we install is made to order. We do not have stock; our workshop is full of flooring that are going through different stages of treatment to become a 'one-off' floor, finished the exact way the client wants it.



PROGAS

HEATING SERVICES LTD



Installation, service and maintenance of boilers, heating systems, air source heat pumps air conditioning, and more covering the South and South East London.



Contact us for more information:

www.progash heating.co.uk | 0208 676 0101

Beautiful Designer Ceiling Fans



Powerful - Reliable - Silent



01256 636 509
www.henleyfan.com



- Quality factory reject Celotex insulation boards
- Thickness from 12mm to 250mm
- Standard size 1.2m x 2.4m
- Other sizes are also available
- Discount available for large orders
- Nationwide delivery subject to agreeing on delivery cost



Collection from

Unit W, Stafford Park, Listion
Sudbury, Suffolk, CO10 7HX

Culford Sawmill, Brandon Road
Culford, Suffolk, IP28 6UE

Office: 01787 370 295 | Mobile: 07963 695 226 | sales@economicinsulation.com

www.economicinsulation.com

RADIATOR OUTLET: YOUR PROJECT'S BEST-KEPT SECRET

AFFORDABLE RADIATORS, BATHROOMS AND UNDERFLOOR HEATING

Transforming spaces with warmth and style since 2015, Radiator Outlet brings you top-quality radiators without the premium price tag. Our journey began with a mission to provide top-notch radiators at prices that won't break the bank, and today, we're proud to expand our offerings to include stunning bathroom suites and efficient underfloor heating systems. With over 16,000 glowing 5-star reviews, our commitment to excellence is evident in every product we offer.

RADIATORS: COSY AND DURABLE

We believe in no compromises. Our radiators are manufactured to the highest standards, using premium materials to ensure durability, impressive heat output and sleek finishes. Even in the face of rising global costs, we've kept our promise of delivering quality products, providing you with reliable and stylish radiators.

Our direct manufacturing and warehousing capabilities mean you won't experience stocking issues, ensuring prompt delivery. Plus, our hassle-free 10-year warranty gives you peace of mind, knowing that any concerns will be addressed directly by us.

BATHROOMS: AN OASIS ON A BUDGET

We've taken our years of expertise in providing quality radiators and applied it to creating affordable, stylish bathrooms. From complete bathroom suites to individual pieces including freestanding bathtubs and elegant basins, we've got everything you need to transform your bathroom into a luxurious retreat.



Each product in our bathroom range is selected for its quality, style and affordability, ensuring you get the best value for your money. Whether you're renovating or building from scratch, Radiator Outlet's bathroom collection offers you the same high standards you've come to expect from our radiators.

UNDERFLOOR HEATING: COMFORT FROM THE GROUND UP

Experience the luxury of warm floors with Toasty Toes by Radiator Outlet. Our affordable underfloor heating kits include electric and water-based systems, designed to suit your space. Whether you need a low-wattage solution for a small area or a high-wattage system for larger spaces, you'll find the perfect fit to keep your feet toasty.

Our range also includes essential accessories including thermostats, insulation and valves, making installation and operation seamless.

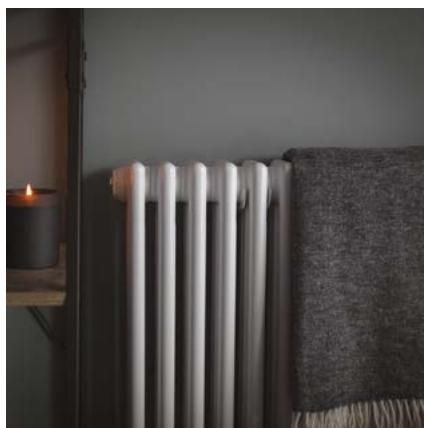
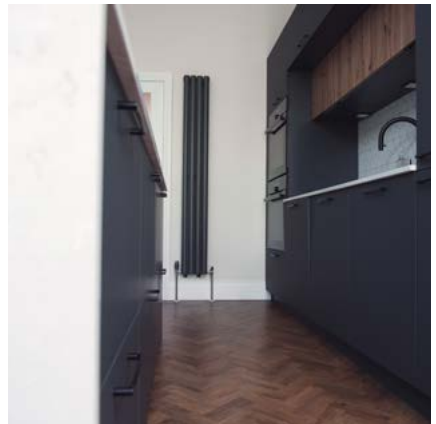
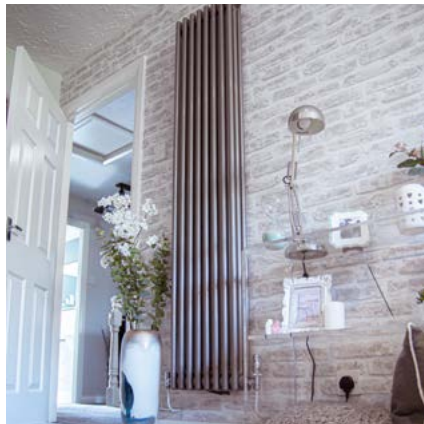
Transform your space with Radiator Outlet, where quality, style and affordability come together and discover why we're the trusted choice for all your home comfort needs.

Radiator Outlet - The home of affordable comfort.

www.radiatoroutlet.co.uk

radiatoroutlet

THE HOME OF AFFORDABLE RADIATORS



For more information, please contact us.



Phone: 0845 860 5908

Website: www.radiatoroutlet.co.uk

Email: hello@radiatoroutlet.co.uk



ALVA ROY

Designed by Alva Roy, Double House gracefully fulfills the clients' wish for seclusion and privacy while maintaining ample access to light and various interior levels.

Finishes in polished handmade reflective black bricks, white panels that reflect the changing moods of the sky, and in combination with Japanese Shou Sugi Ban wood cladding style and Corten steel, exude a subtle assurance.

The design strategically combines materials and textures to highlight the distinct volumes of the home. Predominantly wrapped in black bricks and floor-to-ceiling glazing, the main and second levels step back on three sides, forming a base that sustains a projecting second storey. The latter is adorned with white panels, exhibiting varying hues as sunlight changes throughout the day. This black handmade brick extends from the front facade into the interior spaces at two different levels, framing the sizable, recessed living room window on the ground floor, and the private suite at the intermediate floor, ensuring both continuity and contrast at ground level.

The clients, a young couple, desired a modestly sized home for a family of four that would ultimately prioritize comfort, separation of sleeping rooms at different levels, and the display of contemporary artworks. The interiors are defined by singular and expansive volumes that both reveal and conceal. The double-story voids effectively dedicate designated walls lit by a series of skylights from the roof above, placed on the north side and perfect for absorbing northern light during the day. This house



TECHNICAL SHEET

Residential Project - Single Family House
 Total Area: 300m²
 Architect: Alva Roy
 Builder: ArA
 Photo credit: Tom Arban



is well-crafted in nine separate levels, each perfectly addressing client needs in a very smooth circulation. Despite nine levels, the stairs are not noticeable throughout the house, carving the interior space into different zones of visual and programmatic experience, while simultaneously gesturing at what lies beyond.

Floor-to-ceiling glazing at the rear of the living, dining, and family rooms, complemented by indirect illumination throughout the day, frames immersive views of the backyard, blurring the line between the resplendent landscape and a living area that one can contemplate and inhabit by sliding back the patio doors.

The principal bedroom and two kids' bedrooms on the top floor are separated by three steps and white laminated glass to provide privacy for the parent and the children. At the intermediate floor, an office space and spare bedroom are placed with semi-separate access from the main and top floors. The areas are carefully leveled to impart a sense of privacy, warmth, and serenity with a view to the north adjacent to a sheltered terrace and a narrow void to the sky above, splitting the white panels into a separate single entity and creating a sense of doubling the house with well-crafted Shou Sugi Ban wood siding.

ABOUT ALVA ROY ARCHITECTS

Alva Roy Architects is an award-winning architectural firm based in Toronto. Since its formation in 2003, the firm has pushed the boundaries of architecture and interior design through its innovative use of building through HONEST material and design techniques.

www.alvaroy.ca



USE GRAPHENSTONE'S AIR PURIFYING PAINTS TO IMPROVE INDOOR AIR QUALITY.

Graphenstone joins the Surface Design Show for the 2025 edition to demonstrate how its air purifying paint technology can help save carbon on architectural builds and improve indoor air when used in interior design schemes.

Already known as one of the paint industry's most certified sustainable paint brands, Graphenstone Cradle to Cradle Certified® paints fuse traditional raw materials such as lime, calcium carbonates, and natural minerals with Graphene, one of the planet's most robust inert carbon fibres. This combination produces a natural mineral-based coating with Class 1 durability—the ultimate material innovation.

These unique paints actively help to 'purify' the air by absorbing CO₂ as they cure (the majority absorbed within the first 30 days following application). Graphenstone's paints can be a cost-effective material technology that can help mitigate some of the effects of greenhouse gasses (CO₂e) at the construction stage and help to improve the air quality inside buildings. When comparing EPD and carbon footprint data to industry standard paint figures, using Graphenstone paints present significant CO₂e savings, amounting to several tonnes when used in projects of scale.

For the Surface Design Show 2025, Graphenstone will also present three new colour stories that align with the season ahead. The three stories, 'Smoked Green and Gold', 'Sophisticated Rouge' and 'Nostalgic Nod', each showcase a key hero colour paired with two additional directional accent colours.

Graphenstone's CEO Patrick Folkes says, "Whilst we now have over 120 colours in our collection, I also want to compel those looking for paints to look 'Beyond Colour', a phrase we have now trademarked, to help encourage awareness in respect on ecology from a paint production aspect, the impact on health in homes and workplaces and how it can be affected by toxicity.

I always encourage specifiers to check ingredient listings as many brands often claim to be ecological but won't have the relevant EPD certificate to back these claims. Not only is Graphenstone independently certified, but our paints have one of the lowest embedded carbon footprints in the paint marketplace today. We also encourage people buying our products to ask for the EPD on the product to help 'protect their specifications' ensuring that the outcome matches the original design intent."



Visitors to the show can also try Graphenstone's revolutionary 'Peel and Stick' sustainable colour samples. These 2D colour 'stickers' use 30% recycled materials, are 100% recyclable and use around 94% less paint than the average sample pot. Featuring tiny suction cups that provide a practical low-tack solution, designers and material librarians can show clients and colleagues their perfect colour combinations quickly on-site without having to lug around heavy and messy sample pots.

You can also now discover Graphenstone's full range of paints and Peel and Stick colour samples in selected branches of Brewers Decorator Centres (Abingdon, Barnstaple, Cambridge North, Cheltenham, Exeter, Leicester Freemans Common, Louth, Maidenhead, Putney, Trowbridge, Surbiton, and York).

PLANT A TREE WITH EVERY SWATCH

For every £1.50 colour sample sold, Graphenstone will plant a tree in collaboration with Switch2Zero, supporting Brewers' commitment to sustainability.

► Visit Graphenstone at Stand 241, 4-6 Feb, Business Design Centre, London, and Future Build on Stand G20a, 4-6 Mar, Excel, London.

<https://graphenstone-ecopaints.store/peel-and-stick-samples>





GRAPHENSTONE

PURIFYING PAINTS

Peel & Stick Colour Samples

Eco-Friendly with 94% less paint and 98% lower CO2e than a sample pot



Order online at brewers.co.uk

Available now at Brewers Decorator Centres: Abingdon, Barnstaple, Cambridge North, Cheltenham, Exeter, Leicester Freemans Common, Louth, Maidenhead, Putney, Trowbridge, Surbiton, and York.

graphenstone.co.uk | info@graphenstone.co.uk | +44 (0) 1379 772 940



S-P-01050 EPD
environdec.com



SPRINGLOCK SECURITY PICTURE FIXINGS



Photo credit - www.robertmillsphotography.co.uk and www.buylovevintage.com

The Springlock concealed security fixing was developed by a company with many years of experience installing pictures in hotels, pubs, clubs & restaurants. Frustrated by the shortcomings of existing hanging devices, the Directors decided it was time for picture installation to evolve & they began engineering an entirely new concept. This was designed & created by brothers John & Roger Hough, formally of Ovolo Designs Ltd, based in Barnet, North London. They patented the idea and worked tirelessly on business development immediately afterwards. It took extensive effort to develop the Springlock branding without the power of the internet. No webpages to explain how it worked, no email to connect with potential customers and no social media to spread awareness of the product.

Convincing picture framers that Springlock was a more sophisticated fixing was a feat of endurance to say the least. Nobody had even heard of it, let alone sampled it's working. But since then, Springlock has rapidly grown by it's own merit. It has become a market leader in picture fixings used throughout the United Kingdom with many wholesalers showcasing it within their online brochures and throughout physical stores with their over the counter sales.

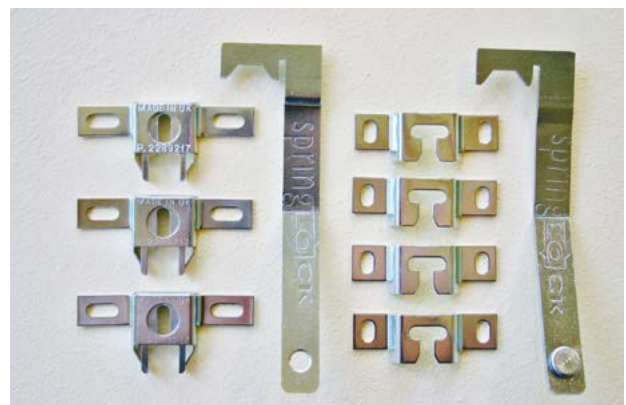
Springlock's reputation as a security fixing has led to it's use in most high end Hotels, Restaurants, Galleries & museums including The Langham and St Pancras Renaissance Hotel, the National Gallery & the Victoria & Albert museum. It appears in capital airports including Heathrow & sales have expanded on a global scale reaching as far as the Oceanic. They are also being specified as compulsory on many cruise liners.

From embryonic design to today's market, Springlock Ltd is still a successful family run business. We pride ourselves on it's UK manufacture and work only with the best tools makers and shipping distribution services.

Having gained experience in the industry working on picture frames and their installation for Ovolo Designs many moons ago, Kate Heath, daughter of Roger Hough took the reins in 2017.

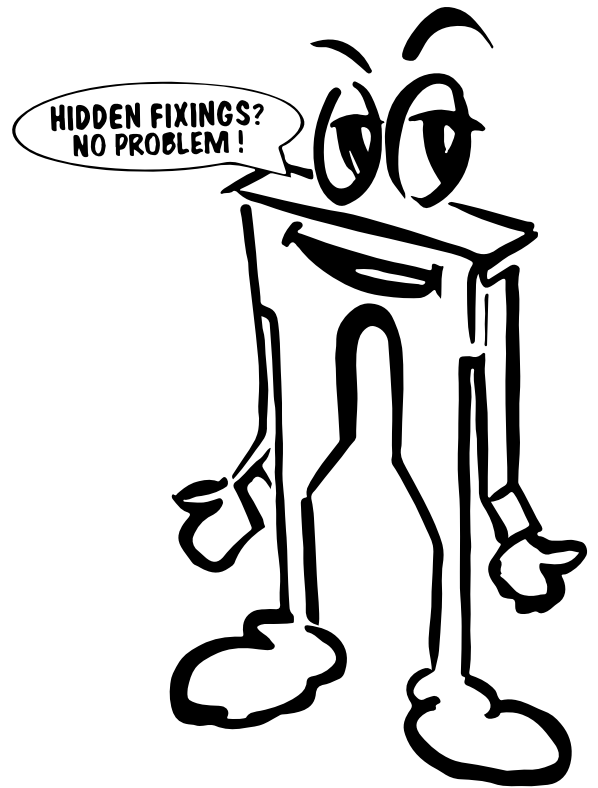
Kate is happy to share her Springlock knowledge and experience should you have any queries. We are based in Hertford, Hertfordshire where collection is possible.

► **Please explore our website for further details on how to order & find a 'how to use' video along with downloadable instruction leaflets - www.springlock.co.uk. Alternatively, if you prefer human interaction rather than the www. then just call us on 01992 475353.**



SpringLOCK Security Picture Fixings

Springlock Security Picture Fixings offer, the professional and amateur, a simple and effective method of hanging pictures, artwork, canvases and mirrors to all types of wall. Designed and produced by a contract picture supplier to the corporate and leisure industry, frustrated by the shortcomings of fixings available on the market, Springlock offers many advantages.



Quick and easy to install.

- Pictures can be fitted faster than by using any other security fixing offered on the market today saving £££'s in labour costs.
- Any type of conventional screw can be used.
- Springlock's design allows for a slight tolerance of inaccuracy when drilling and plugging a wall.
- Springlock is very easy to level accurately.
- Use of a simple 'push in' locking mechanism.



Please find our how to use instruction guide within our website:

www.springlock.co.uk

BRITISH DESIGNED LUXURY FURNITURE AT AFFORDABLE PRICES



My Furniture have perfected the neutral trend this season. Their organic, curved silhouettes inspired by nature will add flow, movement and balance to any interior. Create a calm, cosy and relaxing atmosphere by embracing a neutral palette of ivories, chinks and taupes.

With an extensive knowledge of interiors and a forward-thinking approach, My Furniture are constantly creating fresh and original designs. An increasing number of design professionals are favouring this dependable and affordable furniture provider; including architects, interior designers and property developers.

Early 2020 saw My Furniture substantially extend their warehouse and showroom, resulting in increased stock availability and further streamlining the ordering process for the customer. With over 12,000 Trust Pilot reviews and consistent 5-star ratings, customers can buy in confidence.

Designing in-house in the UK enables this luxury interiors brand to do what they do best - offer unique luxury pieces at affordable prices. Equipped with an in-house upholstery team, it allows them the flexibility to provide bespoke fabric options to suit their customers' specific needs.

My Furniture regularly add new collections to their portfolio.

Whether your preference is hotel luxe or simple elegance, you will undoubtedly find the perfect piece that can be in your home in as little as a couple of days.

New to their collection this season, is the Pax lounge chair. A beautiful opulent accent chair inspired by luxurious hotel interiors. Also joining the Pax is a selection of new seating, artworks, rugs and unique accessories.

Also available from their showroom in Nottingham and online are a wide range of products, from bedroom and dining furniture to elegant lighting and accessories. Alternatively, all products can be viewed via a video call facility with a member of the sales team.

My Furniture are passionate about providing excellent customer service and offering luxury items at affordable prices. Authentic, reliable and honest with FAST AND FREE DELIVERY TO UK MAINLAND. Delivery available throughout Europe.



➡ Discover luxury furniture and a wealth of home décor inspiration, visit: my-furniture.com or call freephone 0800 092 1636.

my furniture



your home
my furniture

living · dining · bedroom · lighting · accessories

my-furniture.com

DP-SLIM: THE LATEST INNOVATION IN SURFACE DESIGN FOR KITCHENS AND BATHROOMS



Decorative Panels Lamination is proud to unveil dp-slim—a revolutionary acrylic surface solution that combines cutting-edge technology with elegant design. Newly launched, dp-slim offers a versatile and durable option for manufacturers creating bespoke kitchens, bathrooms, and other modern interior spaces.

At just 4mm thick, dp-slim redefines possibilities with its lightweight yet robust composition, delivering a sleek, seamless finish that's perfect for high-demand environments. Part of the **dp-slim Crystal Collection**, this innovative product includes over 16 stunning designs from REHAU Rauvisio Pure, Strong, and Deep portfolios. The collection has been further enhanced with the exciting addition of **REHAU Crystal Mirror**, offering a reflective, sophisticated touch ideal for contemporary designs.

DESIGNED FOR KITCHENS AND BATHROOMS

dp-slim is purpose-built to meet the specific needs of kitchen and bathroom manufacturers. Its exceptional durability, easy maintenance, and aesthetic appeal make it the perfect surface solution for:

- **Backsplashes:** A modern, grout-free alternative that's both practical and visually striking.
- **Shower Walls:** Adds durability and style to wet areas with a seamless, luxurious finish.
- **Wall Panels:** A sleek and contemporary option for feature walls in bathrooms and kitchens.

Whether designing for high-end residential kitchens, elegant hotel bathrooms, or multi-unit developments, dp-slim delivers a combination of style and performance that you can rely on.

KEY BENEFITS

Engineered for ease of fabrication, durability, and outstanding results, offering several key benefits:

- **Lightweight and Durable:** At 50% less weight than standard glass and 10 times more resistant to breakage, dp-slim ensures easier handling and reduced damage during production and installation.
- **Scratch-Resistant UV Coating:** Guarantees long-lasting beauty and protection in high-use areas.
- **Hardcoat Finish:** Delivers enhanced resistance to chemicals and abrasions, ideal for kitchen and bathroom applications.
- **Hygienic and Easy to Clean:** A dirt-resistant coating simplifies maintenance, offering end-users a low-maintenance solution.
- **Flexible Processing:** Fabrication is simple with standard woodworking tools, enabling precise cuts and customisation without the risk of shattering.

WHY CHOOSE DP-SLIM FOR KITCHENS AND BATHROOMS?

As a groundbreaking innovation in surface design, dp-slim offers a contemporary alternative to traditional tiles. Its lightweight construction and exceptional durability address the challenges of creating stylish, low-maintenance interiors, making it ideal for both large-scale manufacturing and bespoke projects.

dp-slim eliminates the need for grout lines, providing a seamless, hygienic surface that is easy to clean and maintain. Perfect for modern kitchens and bathrooms, its applications include sleek backsplashes, sophisticated shower walls, and durable wall panels. By combining aesthetics with practicality, dp-slim enables manufacturers and designers to meet the rising demand for functional yet visually stunning interior solutions.

ORDER AND CUSTOMISE

dp-slim is available in laminated acrylic sheets with dimensions of 2800 x 1300 x 4mm, making it ideal for a variety of production scales. With minimum orders starting at just one sheet, dp-slim offers flexibility and accessibility for manufacturers of all sizes.

BE AT THE FOREFRONT OF INNOVATION

dp-slim is the latest advancement in acrylic surface design, crafted to empower manufacturers with a product that's as versatile as it is beautiful. Discover the new dp-slim Crystal Collection today and revolutionise your kitchen and bathroom designs with style, durability, and ease.

www.decorativepanels.co.uk



Designed for **vertical indoor use**, **dp-slim Crystal** is perfect for **splashback** and **wet wall** applications. With its **easy to clean**, **hygienic surface**, **dp-slim Crystal** is a suitable replacement for traditional bathroom and kitchen wall tiles. **dp-slim Crystal** is the ideal glass, tile or traditional stone and marble substitute for all hospitality and retail environments.

Available to order in quantities from as little as just one laminated acrylic sheet with dimensions: 2800mm x 1300mm x 4mm.

Visit www.decorativepanels.co.uk to explore the full **dp-slim** collection within our **dp-limitless** portfolio.

 **dp-limitless**

dp-slim crystal

Timeless glass designs with the unrivalled strength of crystal



No commitment to purchasing in bulk



High scratch resistance



50% lighter than real glass



10x less brittle than real glass



Easily processed



4mm acrylic surfaces





For Everyday Life

REGISTRATION FOR SDS25 IS OFFICIALLY LIVE!

Surface Design Show (SDS) 2025 is fast approaching and with less than 3 months to go, registration is now live.

The Business Design Center in Islington, London, will once again play host to the very best in surface material and product innovation welcoming over 180 exhibitors this year. Returning favorites include; Amron Architectural, Phillip Jeffries, Rehau, Tile of Spain and the Stone Federation. SDS's new exhibitors include Eco Lattice, Stonepros, Digital Ceramic Systems and Decormax.

Amongst some of the exhibits at the show will be new and innovative product launches from the likes of Hybrid & Icon, Ketley Brick, Margraf and For Everyday Life.

Italian wall and flooring manufacturers **Hybrid & Icon** will be launching four collections for the UK market at the 2025 show; Raw Earth offers handcrafted eco-friendly coatings, Artistic Surfaces delivers artistic finishes inspired by natural elements, Design Collection includes customisable furniture and design pieces, and the Art Collection showcases artworks created by artists using a patented composite which utilises natural components such as volcanic sand, earth, metal fusion making all their products unique.

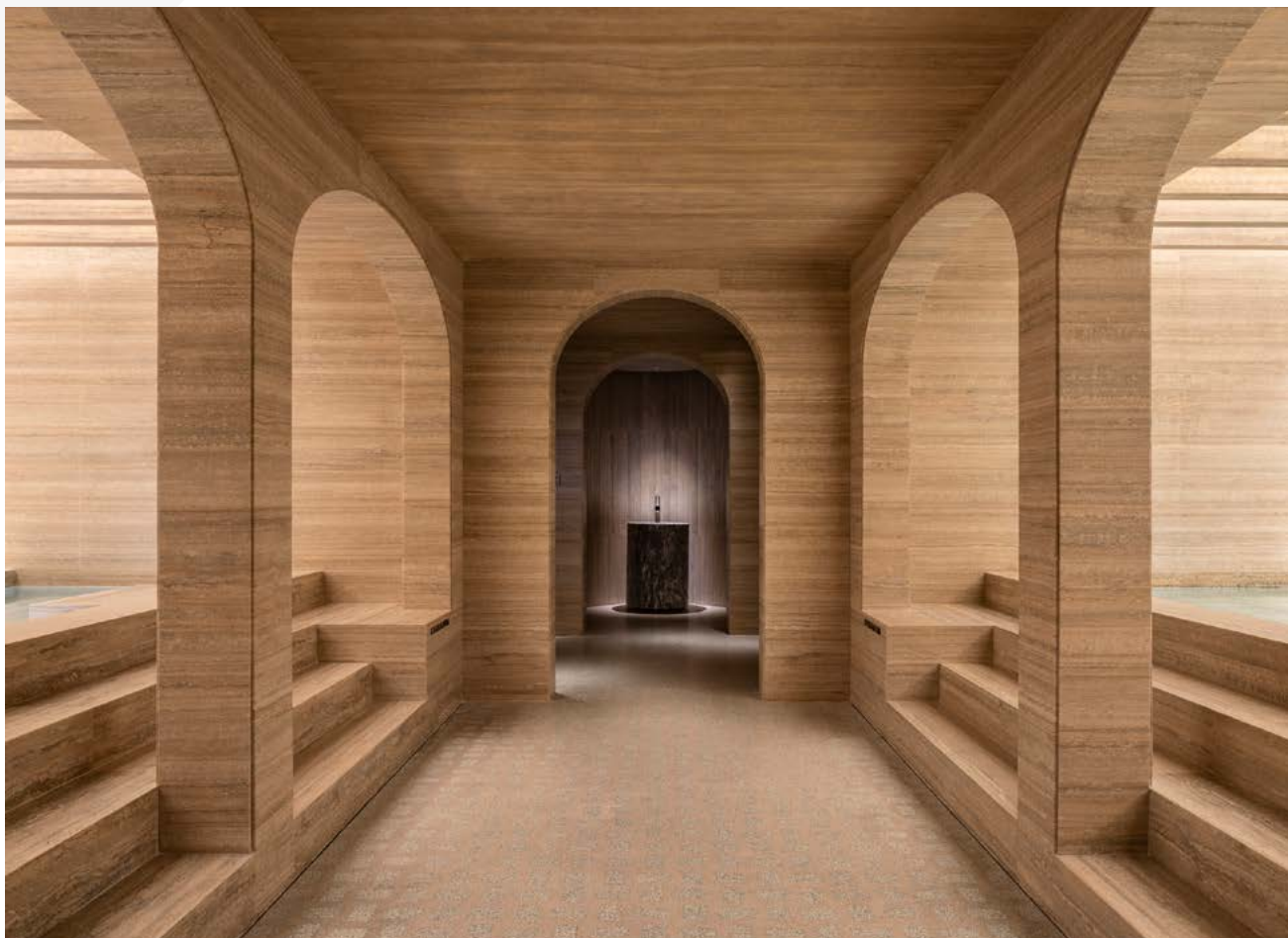


Ketley Brick

Ketley Brick will be showcasing its innovative approach to creating inspirational brickwork facades through its Vision Bricks. Using the latest in digital technologies, Ketley can create relief patterns on the surface of clay bricks, brick slips, pavers and quarry tiles enabling the creation of bold and adventurous wall and floor designs as well as bespoke landscaping features.

Italian marble specialists **Magraf** will be introducing their new product Ipogeo alongside an exclusive range of beautiful marble and natural stone. Ipogeo is a collection designed to awaken the senses and evokes the deepest and most hidden origins of the material, emphasising the close connection between earth and nature. This unique finish creates a totally customised harmonious fusion between polished and opaque, fully representing their technological and artisanal know-how.

For Everyday Life (FE.L) will be presenting their award-winning design; 'Housing Salinas'. One of the winners of the Initiative 99, a global architecture competition for affordable housing, 'Housing Salinas' is more than just architecture. Designed in response to community displacement in Puerto Rico as a result of Hurricane Maria, it is the creation of a long-term solution that strives towards a future where residents can live, work, and flourish in an environment that embodies the highest standards of social and environmental responsibility.



Magraf

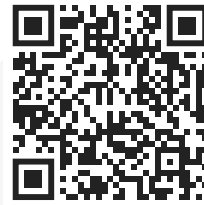
The theme for 2025 is 'Creative Conscience', which highlights the future of materials for the built environment, focusing on sustainability, technology advancement, and the humans experience. Harnessing creativity while encouraging meaningful connections to the world around us, designers can offer more sophisticated, adaptable, and user-centric solutions. The theme not only enhances functionality and aesthetics but also promotes a deeper connection to sustainable living.

Last year SDS played host to 56 speakers throughout the 3-day event, providing a variety of discussions, panels and insights into the most recent design advancements. Returning discussions for 2025 will be the Opening Night Debate which will be looking at artificial intelligence's role within the design community A True Companion: The Power of AI in AD. Other confirmed talks include the Legends Live Series and Emily Wheeler from SDS's Charity Partner, Furnishing Futures.

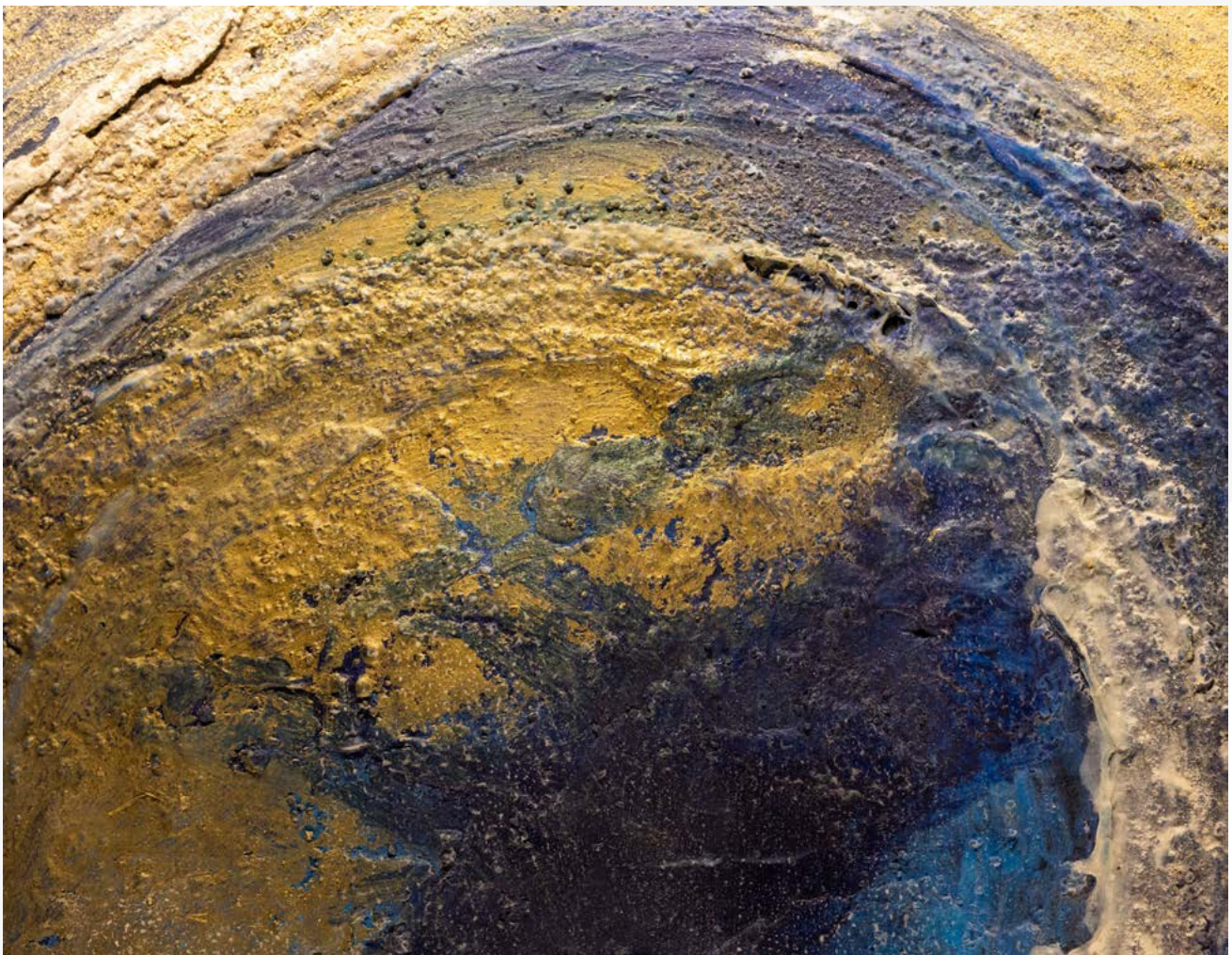
- ▶ **Surface Design Show 2025 Registration**
www surfacedesignshow.com
[www.twitter.com/surfacethinking](https://twitter.com/surfacethinking)
[www.facebook.com/SurfaceThinking](https://facebook.com/SurfaceThinking)
[www.pinterest.co.uk/surfacethinking](https://pinterest.co.uk/surfacethinking)
[www.instagram.com/surfacethinking](https://instagram.com/surfacethinking)
#SDS25 #SDAwards

ABOUT SURFACE DESIGN SHOW

SDS (Surface Design Show) is the event of choice for architects and designers, the exhibition is the place where the entire design community immerses themselves in the latest and most inspiring materials for the built environment. Held annually (4-6 February 2025) at The Business Design Centre in Islington, London, SDS 2025 will focus on Creative Conscience, a commitment to sustainable, ethical and innovative design. SDS invites visitors to discover innovative materials, gain new insights and network with likeminded designers, architects and suppliers.



REGISTER NOW



Hybrid & Icon

SURFACE DESIGN SHOW

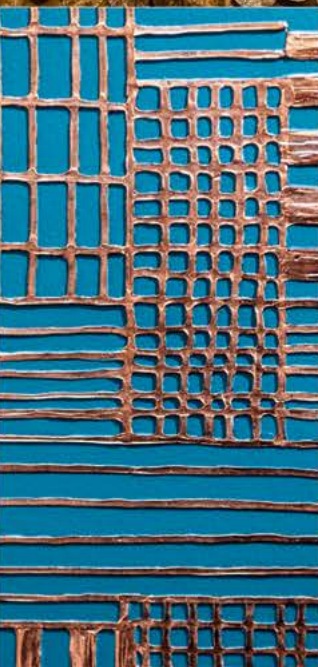
BUSINESS DESIGN CENTRE
LONDON 4-6 FEB 2025

surfacedesignshow.com

JOIN THOUSANDS OF
PROFESSIONALS
FROM ACROSS THE
A&D SECTOR & BE
INSPIRED BY 180
EXHIBITORS AT SDS25.



Secure your free
pass to attend



1895 MONTGOMERY GROUP
DESIGN & BUILD

     @surfacethinking | #SDS25 #CreativeConscience

JANUARY FURNITURE SHOW 2025: THE ESSENTIAL EVENT FOR FURNITURE PROFESSIONALS

Get ready for the most anticipated event in the furniture calendar! The January Furniture Show (JFS) returns to the NEC Birmingham from 19-22 January 2025, offering a dynamic platform where business meets opportunity.

As the first and only major global event taking place in January, JFS will once again solidify its position as the meeting place for the industry at the start of Q1. JFS provides a premier destination to discover top brands, new products, emerging trends, and, most importantly, the opportunity to make those invaluable face-to-face connections. With over 500 leading UK and international brands set to exhibit, 35% of which are new to the show, JFS is designed to unite the entire furniture community under one roof for 4 days of sourcing, networking, and business growth.



Set across 4 sectors, Premium Design, Home & Lifestyle, Living, Dining & Cabinet, and Upholstery & Beds, JFS sets the benchmark for exceptional design and innovation. JFS is a must-attend for anyone in the business of furniture, homewares, interior accessories, and lifestyle products. With over 50,000+ products and collections showcased across the four day event, sourcing couldn't be easier.



Discover innovation and excellence from an impressive lineup of exhibitors, many of which are launching collections exclusively at JFS including the likes of Hooker Furnishings, Qualita, G-Plan, Baker Furniture, Fama, Maxfurn, Himolla, Scatter Box, La-Z-Boy, Buoyant Upholstery, Hill Interiors, Parker Knoll, Qualita, ACTONA GROUP, Skovby, Highgrove Beds, Ashley Manor Upholstery, Trampoline, Widdop & Co., Divan Sahab, Harmony Furnishings, Viva Sleep by Sitting Pretty, Grace & Favour Interiors and many more!

JFS attracts a global audience, with exhibitors and visitors from over 35 countries gathering in Birmingham for more than just product sourcing—networking opportunities are unparalleled. Connect with top retailers, brand owners, designers, and manufacturers at the show's various networking events. The Furniture Awards, in partnership with Furniture News and sponsored by WorldFirst, kicks off on Sunday at 5:30pm at the Social Studio in Hall 2, followed by the Show Party at the Champagne Bar and Happy Hour on Monday at 5:30pm. Additionally, the Women in Furniture Network will host their 'Celebrate Success' event, featuring an engaging panel discussion with Sarah Bianchi (CEO, Arighi Bianchi), Victoria Darnell (International Furniture Designer, Hooker Furnishings), Katy Hawes (Founder, Grace & Favour), and Gisela Lancaster (Head of Buying, Sofology). These events provide a unique space for professionals to connect, share insights, and inspire each other—don't miss out!

Kickstart your January at the first major furniture event of 2025 and find everything you need for a commercially successful year.

[Register now - thefurnitureshows.com](https://thefurnitureshows.com)

January Furniture Show

19 - 22 January 2025 • NEC Birmingham

Register
NOW



Crafted.
Curated.
Connected.



Hooker Furnishings

Building the future of furniture.
Together.

thefurnitureshows.com

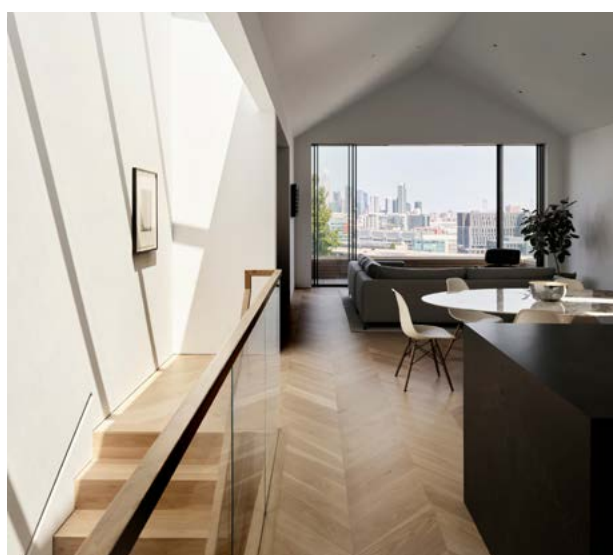


WDA'S HOUSE OF LIGHT AND SHADOW DEFINES CONTEMPORARY URBAN LIVING

Modern design meets Victorian charm within this California family home

William Duff Architects (WDA)—whose versatile design approach is sought after by private clients for city dwellings and country estates alike—unveils a new project nestled in the center of the city. The stunning design pays homage to San Francisco's storied Victorian past, retaining the structure's original façade, while completely transforming the interiors and rear elevation into a statement-making contemporary home.

The three-story front façade features architectural elements that appear to combine characteristics from various Victorian styles. These include Folk, a reference to the middle-class of the Victorian era, Queen Anne, and Italianate. Details of these styles include a flat-roofed, asymmetric elevation with horizontal wood siding, and a double stack of sashed bay windows encased in trim and carving. The entry stairs are flanked by finial-topped newel posts



leading to the glass-paneled entry door beneath a window and a narrow balcony. The modern aesthetic employed by the design team was led by WDA residential practice leader Jim Westover, AIA, LEED AP, who sought to enhance the façade with a crisp palette of bright white, with hints of blue-gray and black.

"This design approach turns the façade from appealingly decorative to strikingly graphic," says Westover.

The firm's distinctive, yet subtle design choice also sets the tone for the design conversation between the front and rear of the residence. Notably, the rear façade opens up to showcase WDA's modern and exuberant take on the Victorian-style façade — resulting in a design composition clad in custom Western Red Cedar that is punctuated by oversized glazed units topped with a peaked roof. Westover observes that while visually juxtaposed, the front and rear façades are architecturally referential.

Throughout the 3,758-square foot interior, the design features a riff on the inverted, or reverse level, floor plan, with programming spread across three levels. The ground floor includes a utilities room, kitchenette, full-bath, and exercise area that also provides access to the landscaped backyard. The main floor features the primary suite with walk-in closet, children's bedrooms, and Jack-and-Jill bath. The vaulted-ceilinged upper floor contains a guest bedroom/den with ensuite bath, powder room, office, kitchen, dining area, and living room that opens onto a deck with city views.

"Victorians are beautiful and important markers of San Francisco's architectural history, but heritage architecture isn't always suited for contemporary living, particularly in cities where space is at a premium," notes Westover. "We believe that with our thoughtful design interventions and interpretations of the past in this design, we are contributing to moving history into the present."

► www.wdarch.com

Photo credit: **Matthew Millman with Lucy Bamman (stylist)**

KEP LIFTS LTD



KEP Lifts offer first-rate expertise in creating residential, commercial and event solutions for all budgets with extensive experience in the Lift Industry. As well as supplying and installing a vast range of lifts and platforms we also explore economical and effective refurbishment solutions. We are proud to have worked in famous iconic landmarks and buildings across the country as well as many private residences and at some of the biggest sporting events.

Our team work with designers, architects, builders, event companies and directly with the end-user building an impressive portfolio of solutions. Through our wide-ranging and varied projects we have built a reputation to bring our ever-increasing product knowledge along with our creativity to every project. For our customer this means there are no limitations to what we can achieve together. We have worked with all building types including modern city offices; hotels, restaurants and cafes, temporary structures for sporting events, landmark buildings and historic homes amongst many others. Our solutions can cater for lifts with any requirements whether they be new or refurbishment, standard or bespoke. We also provide lifts with heavy load capacity up to 2000Kg meaning they can support special floor finishes as well as all barrier and balustrades types.

Working with the most renowned names in the Industry our team of experts will guide you through the whole of your lift project from concept and design, through installation to a continuing relationship providing aftercare. Our team of experts will ensure that the end result meets all



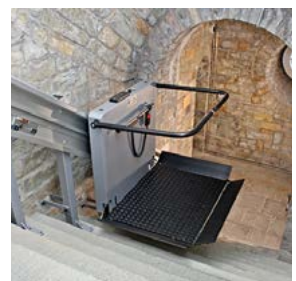
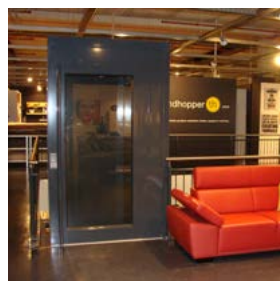
requirements and exceeds expectations for any budget, providing options for our customers to ultimately choose their perfect solution.

Similar to most Industries there are constantly new styles evolving and new technology available. We keep ourselves abreast of all the latest advances so that we can knowledgably guide you on any new features that a lift solution could benefit from. We aim to combine new trends and styles with a client's key requirements to guarantee a platform lift design that is personal to them.

If you are already a lift owner we offer excellent service, maintenance and breakdown care. Our Customer Service team are here to support you in whatever way you need. From regular service and maintenance packages to breakdown assistance we aim to keep your lift travelling smoothly.

Whatever your lift requirement our team can assist you in achieving the best possible solution.

► Contact us today for a consultation and no obligation quote; either email info@keplifts.co.uk or telephone 01843 610060.





KEP Lifts

RAISING THE LEVEL



KEP Lifts Ltd is a well-established company supplying, installing and servicing a vast range of lifts and platforms



With over 30 years of experience in the Lift Industry we come with extensive knowledge of many brands of lifts. For new projects we offer expertise in creating residential and commercial solutions for all budgets with superior project management.

Our passion for creating bespoke lift solutions that are personal and sympathetic to their surroundings means that we deliver a lift that fits beautifully within its environment, marrying practicality and style.

Whatever your lift requirement contact us for a consultation or a no obligation quote:



**01843 610060 or info@keplifts.co.uk
www.keplifts.co.uk**





ARCHITECT USES ‘SIGNATURE’ CATNIC URBAN ROOFING AND CLADDING FOR COASTAL HOUSE EXTENSION

A mid-1960s detached house that sits on the scenic Gower coastline has undergone a major renovation.

The transformation features the architect’s signature style with Catnic Urban steel standing seam roofing and cladding on the cantilevered two-storey extension, bringing the property up-to-date and enhancing its modern curb appeal.

“It was the view we fell in love with,” explains the homeowners Jake and Elfina, “the house itself needed a lot of work but we saw the potential to create a wonderful contemporary, family home. A key priority for us was ensuring durability and low maintenance - being on the coast exterior materials really take a battering.”

When the couple purchased the original three-bedroom property just after lockdown, the brick-render home included tired painted timber cladding, stonework typical of its era and a failing, flat roof side extension. Their objective was to extend, make the best use of the available space and give it a fresh, new identity.

Raum Architects, based in Mumbles, was commissioned by the couple to re-imagine the house. To give the property its own, distinct style in the same way the original 1960s house was architecturally of its time.

Architects Dan and Helen Belton explain: “Extending an already substantial property with a significant addition is always challenging. Through experience, the way we achieve this successfully, especially at two storeys, is to give the new structure its own unique character, and then visually link it to the original house. There was already a single-storey form there, albeit a slightly different shape. We created a new first floor, adding about 45 sqm to the floor area.”

Purposefully contrasting, the now two-storey structure combines Catnic Urban standing seam metal roofing and cladding with Cotswold Limestone stone, Marziale brick and Western Red Cedar timber cladding.

CATNIC URBAN TIES IN WITH ORIGINAL ROOF FINISH

They continue: “With the exterior finishes, it was key that whilst we weren’t replicating those applied originally, we were taking the essence of the materials used and adding a modern spin in terms of texture and colour. Taking the roof as an example, the original house featured slate tiles. Whilst we used slate on the main part of the house, we specified Catnic Urban roofing in a warm grey for the extension. The standing seam finish ties in and at the same time provides that contemporary element.”

The husband and wife architectural team is no stranger to Catnic Urban roofing and cladding and tends to incorporate it into many of their projects. On this project, the standing seam profile works especially well as an outer shell. It’s an exceptionally exposed location and the Catnic Urban, which is BBA & UKCA certified, provides that protective envelope, a shield against the harsh elements.

Pitched in proportion to the original house, which was raised, largely to incorporate an additional storey of bedroom accommodation, the extension roof, internally, creates a 3.5m high vaulted ceiling and provides the first-floor master bedroom with a breathtaking sea view.



SELECTING THE RIGHT ROOF COLOUR

Available in the most popular RAL and BS colours for a seamless finish with metal window frames or doors, as well as a wide range of colour-matched accessories. The architects explain how they arrived at the particular colour for this project: “We’ve worked with Catnic Urban before and it’s great to be able to select the colour for each project with samples readily available. In this instance, we chose quite a warm grey called Merlin, which we find reflects the sky really well. It actually looks a lot lighter when it’s up.”

Originally on the extension’s exterior walls, Raum Architects specified Western Red Cedar cladding on the main house, but the clients decided to use standing seam cladding instead, as Jake explains: “We did our research and found the quality and colour of the Catnic Urban for the budget was perfect. Plus, durability was particularly important. As we’re in a coastal location, we wanted something that would weather the extreme coastal conditions we experience here. It’s provided a superb finish and real value for money, we’re very pleased.”

ARCHITECTS DAN AND HELEN REINFORCE THIS SENTIMENT:

“We didn’t consider any other standing seam option. We use Catnic Urban on almost every project. It’s such a versatile material and has always worked out as a straightforward solution. Often, we find contractors are reticent to deviate from their preferred material which, around here, tends to be slate or concrete tiles. However, once they are fully trained by Catnic and try it, they are converted and happy with the outcome.”





FIRST-CLASS INSTALLER TRAINING AND SUPPORT

The main contractor, Swansea-based HJO Developments worked closely with Raum Architects during the construction to achieve an award-winning level of finish.

The directors of HJO Developments (Simon Orr and Christopher Jenkins) have an accumulated military service of over 51 years, so they were well-equipped to tackle the challenge of learning new skills and working with a new material. Chris is in charge of running all of HJO Developments building sites; he explains: "I enjoy the prospect of working with different materials so when the architects Dan and Helen specified Catnic Urban, I promptly booked myself on to a training course at Catnic's training facility along with our carpenters, Luke Howard and Alan Rees.

"We'd definitely recommend doing the course. It was hugely beneficial. The content and delivery are first class as is the follow-up support. You learn what equipment is required and the skills to install the roof, all critical to the final result and a successful installation. It also provided us with useful contacts within Catnic to discuss any issues that might arise.

"The ordering system was easy to use with support from Catnic, allowing us to specify our requirements and order everything within a week. As part of

the initial design and ordering process, all of the connecting detail between the different materials was discussed at length and a solution agreed upon with the Catnic team before ordering."

In a two to three-week timescale, the HJO Developments team installed 137 sqm of the 514mm profile, which is better suited to the harsh weather conditions experienced within the Gower area. The design was a large 42-degree duo-pitched roof with two walls clad to match the roof, tying into a large overhanging balcony area finished in Western Red Cedar.

"The Catnic Urban is a nice product and once you know what you're doing with it, creates a very contemporary finish. We all very much enjoyed working with the product," concludes Chris.

With a 25-year Confidex® Home Guarantee, Catnic Urban (previously known as Colorcoat Urban) is a light-weight, versatile standing seam roof and wall cladding system. Made in the UK from pre-finished steel, it is rated A+ under BRE certification, meaning it has the lowest overall environmental impact.

It is also available with Catnic SolarSeam, a bonded solar panel integration or supplied with clips for traditional crystalline solar panels.

► [Find out more about Catnic Urban visit www.catnic.com](https://www.catnic.com)

★ Trustpilot



Lunawood Collection Exterior Cladding



RUSSWOOD
selected sustainable timber
FLOORING • CLADDING • DECKING

Russwood Ltd, Station Sawmill, Newtonmore, PH20 1AR

T: 01540 673648 E: mail@russwood.co.uk

www.russwood.co.uk



UNRIVALLED EXCELLENCE IN GUTTER LINING TECHNOLOGY



Over 400 metres of the Unifold® Gutter lining system was installed on London's iconic venue, The Royal Albert Hall, throughout the summer of 2023.

The Unifold® Gutter Lining System was chosen for its versatility, unfailing ability to replicate existing systems and its long life.

Following a survey by Ampteam personnel, along with Saper Glass Industries Limited, a design solution was provided for the gutters and samples were sent to test fit the Unifold® gutter lining within the gutter cavity, as the throat dimension varied considerably across the profiles.

All runs of the gutter were manufactured to suit the curved nature of the dome which roofs the Hall, and to fit within the minimal throat dimension between the glazing and glazing bars, meaning that bespoke faceted and cranked joint plates were provided so that the new Unifold® lining could follow the profile of the existing gutter.

Full site information was provided including laying sequences, special details and instructions with each delivery of the system.

Ampteam were partnered by Approved Installer, Saper Glass Industries Limited and Faithorn Farrell Timms as contract administrator, and their

input and expertise, along with comprehensive discussions throughout, enabled a successful installation of the Unifold® system.

Following installation of the Unifold® every Unifold® gutter run was water tested by flooding the gutter from the top of the run(s) via hose, with additional assistance from the poor weather, and no leaks were detected in any of the installed gutter runs.

Ampteam developed the Unifold® gutter lining system some 20 years ago to provide custom designed solutions to leaking gutter problems.

Unifold® utilises an EPDM membrane at the wet surface for longevity without fear of corrosion, it employs a double sealed joint which can be guaranteed not to leak and the system is engineered to maximise the potential of each and every installation whether it be in conjunction with roof replacement or over sheeting or just to re-line the existing gutter.

It is very often a practical and cost effective solution to consider lining an existing gutter and Unifold® offers exceptional life expectancy and corresponding joint integrity, often far better than the original gutter and following design consideration can often actually increase existing gutter capacity, enlarge outlet orifices and introduce additional outlets with relative ease.

Whenever possible gutters are surveyed by Ampteam personnel. The company actively encourages contractors to use its survey services and this is available throughout the UK and each Unifold solution is designed to provide the client, the building occupier, with the best possible solution and on occasions this will result in an improvement in performance to the original gutter.

Unifold® is provided with full technical support from advice at the inception of an enquiry through to installation and beyond. Our countywide network of fully trained approved contractors are available to install and provide maintenance inspections and cleaning when required.

Unifold® is installed by approved contractors whose installation teams have been fully trained by Ampteam personnel in house at our training facility and following installation, by an approved contractor, the gutter lining is guaranteed for a period of 30 years.

► **For further information about our Unifold gutter lining system, samples or prices, please call 01384 252777 or email unifold@ampteam.co.uk.**

Saving for a rainy day...

UNI-DAM, a rainwater management system designed to prevent heavy storm rainfall from overwhelming gutter systems and flooding into buildings.

The system is fixed to the roof and once installed slows and controls the flow of rainfall into the gutter.

For more information or quote please contact our office on 01384 252777.



AMPTeam

Unrivalled excellence in gutter lining technology.
www.gutterliners.com

Imitation is always flattery...

But none can match the excellence of a system that is truly complete

THE UNIFOLD GUTTER LINING SYSTEM.

Having faced and solved every problem experienced in its long life with consummate ease **UNIFOLD** remains THE **GOLD** STANDARD to which others aspire!

UNIFOLD – Unrivalled excellence in Gutter Lining Technology.



AMPTeam

UNIFOLD® Unrivalled excellence in gutter lining technology.
www.gutterliners.com

HOUSE B

House B is a renovation designed for a young family. A bold extension to a heritage terrace is defined by a translucent glass wall that lights the new living spaces, registering the blurry movements behind it while maintaining security and privacy from the street.

Trapped and shaded by a mess of lean extensions accumulated over 60 years by its previous owners, the project sought to open up and bring light into a typical skinny terrace, taking advantage of a prominent corner site.

Respectful of its heritage context and allowing the original terrace to maintain its prominence, the new extension dips down over the living spaces before rising at the back of the block, preventing the overshadowing of neighbors and a new internal courtyard throughout the day. The side of the extension is defined by a translucent glass wall which brings light into the new living spaces, registering the blurry movements behind it, while maintaining security and privacy from the street.





PROJECT DETAILS:

House B is built on the land of the Wurundjeri people.

Architects: Kart Projects | Architecture
Area: 152 m²
Year: 2024

Rather than an expansive extension, the strategy to minimize the footprint and create multifunctional and related spaces allowed the budget to be 'concentrated' on a smaller area and allowed for higher detailing and resolution across the low-cost project. Bedrooms and wet areas are split between the front heritage terrace for children and visitors and new parents retreat elevated over the garage at the back of the block.

The line where the renovated terrace meets its extension is strongly delineated through form and material externally and internally, with a full-width opening supported by an expressed steel frame in the back wall to clearly mark this transition. Materials and finishes are applied in blocks of color or texture to define different elements of the house. The existing house has been renovated to emphasize its original detail and ornament, contrasting with brighter and stripped-back new spaces that combine steel framing and glazing and plywood joinery.

Construction systems prioritized those that the owners could carry out themselves to minimize contracting out works or the need for specialist trades. Many materials were either repurposed - for example, the original bricks from the demolished section of the old house were cleaned on-site and relaid - or others sourced to adapt leftovers or offcuts into the final product and save on building costs and waste.

www.kartprojects.co



ADVANCED'S EVACGO SYSTEM SAFEGUARDS RETIREMENT COMPLEX RESIDENTS



Princess Court, a high-rise independent living complex in Manchester, has enhanced safety with Advanced's EvacGo evacuation alert system. Managed by Your Housing Group, the building supports residents aged 55 and over.

Installed by JFN Integrated Solutions Ltd, the BS 8629-compliant system complements the existing MxPro 5 fire panel, delivering reliable and user-friendly evacuation capabilities. This upgrade aligns with broader fire safety improvements, including cladding replacement and a move to a "stay put" strategy.

The system provides peace of mind and ensures controlled evacuations if needed. Advanced's tailored solutions empower fire services to manage emergencies effectively, exceeding safety standards.

For further information on Advanced: Tel: 0345 894 7000 or visit: www.advancedco.com and for JFN, Tel 01772 709959 or visit info@jfnintegratedsolutions.co.uk

T: +44 (0) 1825 764 737
F +44 (0) 1825 768 330
E: info@appeng.co.uk
www.appeng.co.uk



FIRE SPRINKLER VALVE SET 1" TO 2"



THE AWARD WINNING FIRE ENGINEERING SOLUTION

Fire Scrutineer

The Fire Scrutineer concentrates on the 3 gateways of a construction project:



Design



Construction



Pre-Occupation

At each gateway, Global provide a mixture of desktop analysis and site visits to ensure that all design and actual build details are compliant, installed correctly and of good workmanship. The Fire Scrutineer records and assesses all aspects of the fire safety of the project to show due diligence and provide evidential, auditable records for the O&M manuals, in line with Regulation 38.

 0115 721 2930

 info@globaltechnicalservices.co.uk

 globaltechnicalservices.co.uk



MANY –“AS BUILT FIRE TESTS”
ENABLES COMPLIANCE WITH B.S.A.

Magply

A1 NON-COMBUSTIBLE BOARD

TESTED AND CERTIFIED FOR

- ▶ Timber frame construction
- ▶ Spandrel panels
- ▶ Modular build
- ▶ Rainscreen cladding
- ▶ Render carrier board
- ▶ High performance dry lining
- ▶ Tilebacker
- ▶ Fire resistant floors and ceilings
- ▶ Passive fire protection
- ▶ Steel frame construction



magply.co.uk | 01621 776252 | sales@magply.co.uk



FOREST HOUSE

Located in the lush forest of Oostvoorne, this family home is designed to blend seamlessly with nature.

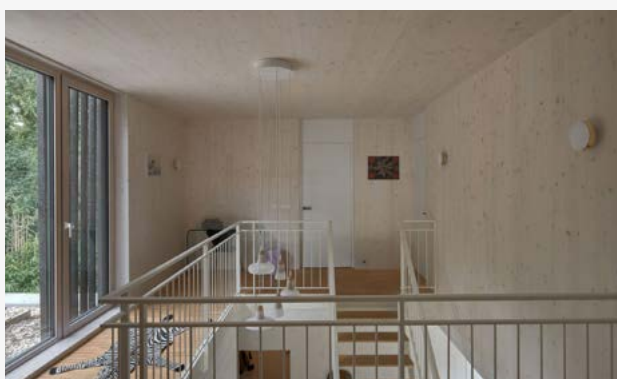
The three volumes on the ground floor are slightly recessed into the ground, offering views from each wing to different sections of the meticulously landscaped garden.

The house is constructed from CLT (Cross Laminated Timber), showcasing the robustness and intrinsic beauty of natural wood. The three wings converge in a central hall, where strategically placed glass frames the garden like a painting. On top of the ground floor sits a fourth volume that appears to float over the sunny terrace, supported by strong, solid wooden side walls.

To harmonise with the green surroundings, the facade is made of charred Accoya wood and green aluminium accents. The clean rhythm of planks and beams plays with the horizontal lines that emphasise the CLT volumes. In some areas, the beams are more closely spaced, creating a curtain-like effect in front of the windows and providing fall protection. The natural texture of the charred wood is alternated with smooth aluminium surfaces, which also cover the exterior of the wooden frames, ensuring long-lasting durability.

Large glass openings are set between the CLT panels, literally bringing the outdoors inside. Inside, the





PROJECT DETAILS:

Architects: Kumiki

Area: 365 m²

Year: 2024

Photographs: MWA Hart Nibbrig

home feels light and warm. The natural wood visible throughout, combined with loam walls and wood fibre insulation, promotes a pleasant moisture balance and a healthy indoor climate.

The home is built with a strong focus on sustainability: nearly everything is made from biobased materials, creating a positive impact on the environment. Furthermore, the house generates more energy than it consumes through the use of a geothermal heat pump, energy roof, heat recovery ventilation (HRV), and a rainwater reuse system via green roofs.

www.kumiki.nl



FLUSHING NON-FLUSHABLE ITEMS

THE IMPACT ON INFRASTRUCTURE

As architects, builders, and property developers, understanding the implications of flushing non-flushable items is crucial for sustainable design and construction. Flushing inappropriate products can lead to severe consequences for our sewer systems, wastewater treatment facilities, and septic systems, ultimately impacting the health of our environment and communities.

INCREASING STRAIN ON SEWER AND DRAINAGE SYSTEMS

Despite significant investments in infrastructure, our sewer and drainage systems are becoming increasingly strained. The growing population contributes to a rising volume of waste entering these systems. Research by the Marine Conservation Society reveals that between 1.5 billion and 2 billion sanitary items—including tampons, nappies, and wipes—are flushed each year. This alarming statistic highlights the urgent need for solutions that can alleviate pressure on our infrastructure.

"Despite significant investments in infrastructure, our sewer and drainage systems are becoming increasingly strained."

UNDERSTANDING THE CHALLENGE OF NON-FLUSHABLE ITEMS

Unlike toilet paper, which is designed to break down easily, non-flushable items are made to absorb moisture. When introduced into sewer systems, these products swell and become entangled with fats, oils, and grease (FOG), resulting in blockages that can compromise system efficiency. The consequences of this issue can be significant:

- **Increased Maintenance Costs:** Frequent blockages lead to costly repairs and emergency clean-up efforts, placing a financial burden on municipalities and taxpayers.
- **Environmental Hazards:** Untreated sewage can spill into streets and waterways, causing environmental degradation and health risks for local communities.
- **Infrastructure Integrity:** The ongoing need for maintenance can result in long-term damage to sewer systems, necessitating more extensive and expensive repairs.



INTRODUCING ENVIRO ECO TRAPS: A SOLUTION FOR SUSTAINABLE DEVELOPMENT

Having tested numerous designs during product development, Enviro Eco Traps offer innovative solutions to mitigate the negative impact of flushing non-flushable sanitary items. Enviro Eco Traps are designed to sit in the drain run and intercept non-flushable sanitary items. The trap holds these items within the box or tube so it can be emptied and the waste disposed of as and when required.

THE TRAP BOX: Ideal for new builds, this device is installed within an inspection chamber in the drainage run. Its filtration captures non-flushable items while allowing natural waste and toilet paper to flow through smoothly, preventing blockages and reducing sewage spill risks. By incorporating these traps into your designs, you can enhance the sustainability and efficiency of your projects.

THE TRAP TUBE: Designed for retrofitting in existing drainage systems, the Trap Tube fits easily into current inspection chambers. Its tapered design allows for effortless removal and replacement. Like the Trap Box, it filters drainage flow to ensure only biodegradable waste is able to pass through, making it a practical and effective solution.

BUILDING A SUSTAINABLE FUTURE

By integrating Enviro Eco Traps into your architectural and development projects, you can play a vital role in reducing environmental and infrastructural challenges associated with flushing inappropriate items. These traps not only safeguard sewer systems but also contribute to cleaner waterways and healthier communities. As professionals in the field, it's essential to promote awareness about proper flushing practices to ensure the longevity and efficiency of our sanitation systems, ultimately leading to a more sustainable future.

www.enviroecowallpanels.com

Flushing products other than toilet paper can have serious consequences for our sewers, wastewater treatment plants, and septic systems. These failures can lead to the discharge of raw and partially treated sewage into our coastal watersheds, resulting in the pollution of local waterways and posing a risk to public health.

ENVIRO ECO TRAPS CAN HELP STOP THIS DAMAGE



Enviro Eco Traps are designed to sit in the drain run and intercept non-flushable sanitary items. The trap holds these items within the box or tube so it can be emptied and the waste disposed of as and when required.

THE TRAP BOX

Designed with new-builds in mind, the Enviro Eco Trap box is installed inside an inspection chamber within the drain run. The filtering action of the trap intercepts and holds any items that should not have been flushed but allows natural waste and toilet paper to pass through as normal.

We also produce a slimmer “above ground” trap box which can easily be incorporated into the individual soil pipe runs from each property in apartment buildings.



THE TRAP TUBE

Accessed via an existing inspection chamber, the trap tube is ideal for retro-fitting in drainage systems that are already live. The trap tube has a tapered shape so it is easily removed and replaced using the supplied cable or rod. As with the trap box, the trap tube filters the drainage flow, allowing only natural waste and toilet paper to pass through. Both the trap box and the trap tube are easy to empty.

ECLISSE Syntesis Flush - Concealed Frame Collection



The simple beauty of a flush finish without the distraction of architrave

Minimalist and elegant, the ECLISSE Syntesis Flush Collection of pocket door systems, concealed door frames and flush skirting are used worldwide in residential projects and multi-million pound developments.

Our innovative range of fully engineered products have a specially designed edge profile for a beautiful, crisp plaster finish.



Contact our ECLISSE UK product experts on:
0333 5770828
info@eclisse.co.uk
www.eclisse.co.uk

Creating innovative door systems for more than 35 years

ARCHITRAVE FREE POCKET DOORS | CONCEALED FRAME HINGED DOORS | FLUSH SKIRTING



CALL **0333 5770828** TO REQUEST A COPY OF OUR LATEST BROCHURES