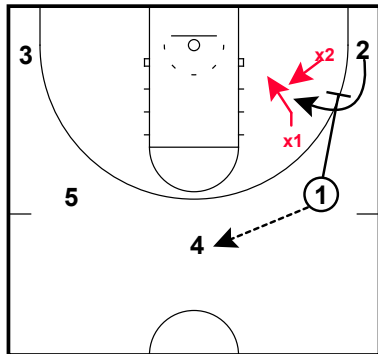


# Off Ball- Curl into Screen

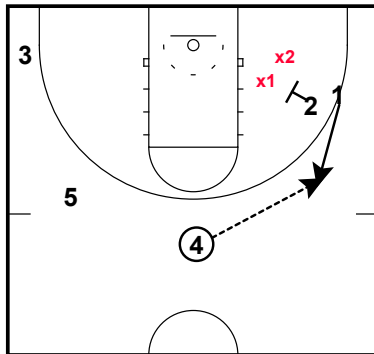
## Golden State Warriors

Kings Downscreen DHO- Curl (Switch)  
Half Court Man Offense- Sets



5 out set. 1 hits trail man. 1 pins down for 2. 2 curls the screen.

Kings Downscreen DHO- Curl (Switch)  
Half Court Man Offense- Sets



2 curls his screen right into a pin for 1. 1 pops behind screen.

The man that 2 screens could vary based on how the defense is positioned. He may end up screening his own man. It is most likely that he will screen whoever the highest defender is.