



tracesofme

B2B

# PANARCHY

FALL WINTER 2025



# Fall Winter 25 - Panarchy



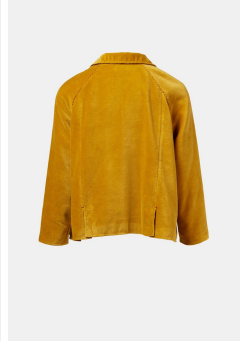
## Coat Audrey Jammu

Color Coffee Bean

Composition 50% Silk | 50% Viscose

SKU: 948255001

WSP € 257.00



## Coat Garconette Amber

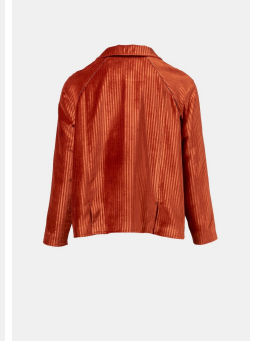
Color Amber

Composition 50% Cotton | 50% Silk

Measurements 1 - Central back length: 58cm 2 - Chest half: 59cm 3 - Bottom half: 67cm 4 - Sleeve length from neck: 67cm

SKU: 948255004

WSP € 171.00



## Coat Garconette Burnt Sienna

Color Burnt Sienna

Composition 50% Cotton | 50% Silk

Measurements 1 - Central back length: 58cm 2 - Chest half: 59cm 3 - Bottom half: 67cm 4 - Sleeve length from neck: 67cm

SKU: 948255005

WSP € 171.00



## Dress Resort Cherry Blossom

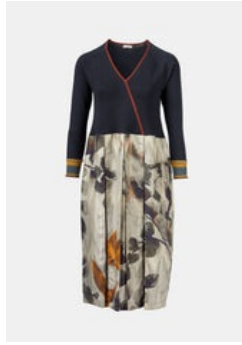
Color Multicolor

Composition 100% Silk

Measurements 1 - Central back length: 110cm 2 - Chest half: 55cm 3 - Bottom half: 101, 5cm 4 - Sleeve length from neck: 74, 5cm

SKU: 908255002

WSP € 257.00



## Dress Poppy Abyss Savannah

Color Multicolor

Composition TOP - 55% Cashmere | 45% Silk

BOTTOM - 100% Silk

Measurements 1 - Central back length - 112cm 2 - Chest half - 40cm 3 - Bottom half - 84cm 4 - Sleeve length - 63cm

SKU: 492255002

WSP € 234.00



## Dress Resort Strelitia

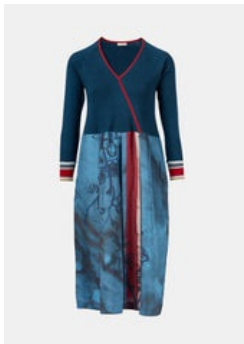
Color Multicolor

Composition 100% Silk

Measurements 1 - Central back length: 110cm 2 - Chest half: 55cm 3 - Bottom half: 101, 5cm 4 - Sleeve length from neck: 74, 5cm

SKU: 908255001

WSP € 257.00



## Dress Poppy Abyss Cherry Blossom

Color Multicolor

Composition TOP - 55% Cashmere | 45% Silk

BOTTOM - 100% Silk

Measurements 1 - Central back length - 112cm 2 - Chest half - 40cm 3 - Bottom half - 84cm 4 - Sleeve length - 63cm

SKU: 492255001

WSP € 234.00



## Dress Poppy Cancan Shiraz

Color Green | Shiraz

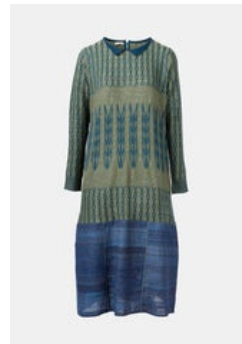
Composition TOP - 50% Wool | 50% Silk

BOTTOM - 100% Silk

Measurements 1 - Central back length - 119cm 2 - Chest half - 50cm 3 - Bottom half - 80cm 4 - Sleeve length - 61cm

SKU: 492255004

WSP € 202.00



## Dress Poppy Cancan Dark Night

Color Sage Green | Navy

Composition TOP - 50% Wool | 50% Silk

BOTTOM - 100% Silk

Measurements 1 - Central back length - 119cm 2 - Chest half - 50cm 3 - Bottom half - 80cm 4 - Sleeve length - 61cm

SKU: 492255005

WSP € 202.00

# Fall Winter 25 - Panarchy



## Dress Poppy Cancan Ink Stripes

**Color** Natural Yak | Dark Night

**Composition** TOP - 50% Wool | 50% Silk BOTTOM - 100% Silk

**Measurements** 1 - Central back length - 119cm 2 - Chest half - 50cm 3 - Bottom half - 80cm 4 - Sleeve length - 61cm

**SKU: 492255003**

**WSP € 202.00**



## Tunic Chopin Taj Flowers

**Color** Duck Green

**Composition** 100% Silk

**Measurements** 1 - Central back length: 109cm 2 - Chest half: 58cm 3 - Bottom half: 93cm 4 - Sleeve length from neck: 69, 5cm

**SKU: 908255010**

**WSP € 243.00**



## Tunic Chopin Taj Flowers

**Color** Cumin

**Composition** 100% Silk

**Measurements** 1 - Central back length: 109cm 2 - Chest half: 58cm 3 - Bottom half: 93cm 4 - Sleeve length from neck: 69, 5cm

**SKU: 908255011**

**WSP € 243.00**



## Tunic Chopin Taj Flowers

**Color** Snokel Blue

**Composition** 100% Silk

**Measurements** 1 - Central back length: 109cm 2 - Chest half: 58cm 3 - Bottom half: 93cm 4 - Sleeve length from neck: 69, 5cm

**SKU: 908255012**

**WSP € 243.00**



## Shirt Botanic Collar Watercolour Checks

**Color** Indigo | Stone

**Composition** 100% Silk

**Measurements** 1 - Central back length: 60cm 2 - Chest half: 61cm 3 - Bottom half: 59cm 4 - Sleeve length from neck: 61cm

**SKU: 908255003**

**WSP € 144.00**



## Shirt Botanic Collar Watercolour Checks

**Color** Green | Cheery

**Composition** 100% Silk

**Measurements** 1 - Central back length: 60cm 2 - Chest half: 61cm 3 - Bottom half: 59cm 4 - Sleeve length from neck: 61cm

**SKU: 908255004**

**WSP € 144.00**



## Shirt Botanic Collar Watercolour Checks

**Color** Amber | Stone

**Composition** 100% Silk

**Measurements** 1 - Central back length: 60cm 2 - Chest half: 61cm 3 - Bottom half: 59cm 4 - Sleeve length from neck: 61cm

**SKU: 908255005**

**WSP € 144.00**



## Shirt Anna Long Sleeves Magnolia

**Color** Forever Blue

**Composition** 30% Silk | 70% Cotton

**Measurements** 1 - Central back length: 60cm 2 - Chest half: 58cm 3 - Bottom half: 62cm 4 - Sleeve length from neck: 72cm

**SKU: 908255006**

**WSP € 76.00**



## Shirt Anna Long Sleeves Magnolia

**Color** Bok Joy

**Composition** 30% Silk | 70% Cotton

**Measurements** 1 - Central back length: 60cm 2 - Chest half: 58cm 3 - Bottom half: 62cm 4 - Sleeve length from neck: 72cm

**SKU: 908255007**

**WSP € 76.00**



# Fall Winter 25 - Panarchy



## Shirt Anna Long Sleeves Magnolia

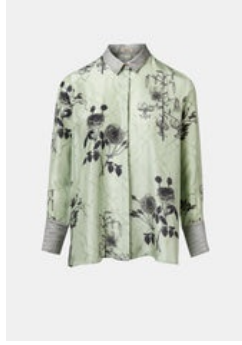
**Color** Silver Green

**Composition** 30% Silk | 70% Cotton

**Measurements** 1 - Central back length: 60cm 2 - Chest half: 58cm 3 - Bottom half: 62cm 4 - Sleeve length from neck: 72cm

**SKU: 908255008**

**WSP € 76.00**



## Shirt Simple Taj Flowers

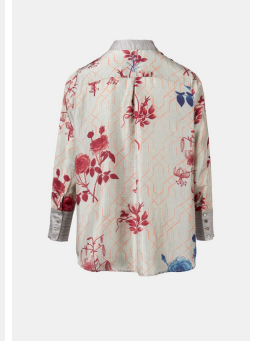
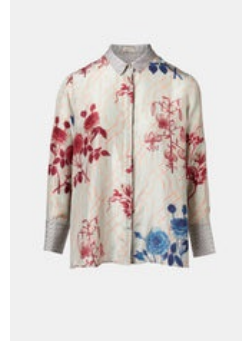
**Color** Silver Green

**Composition** 95% Silk | 5% Cotton

**Measurements** 1 - Central back length: 69cm 2 - Chest half: 60cm 3 - Bottom half: 63cm 4 - Sleeve length from neck: 69cm

**SKU: 948255015**

**WSP € 150.00**



## Shirt Simple Taj Flowers

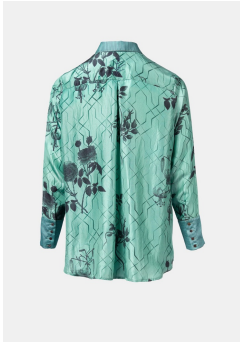
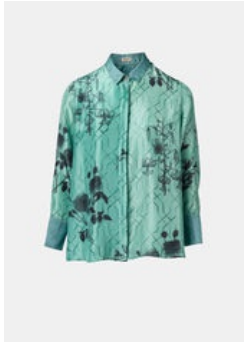
**Color** Multicolor

**Composition** 95% Silk | 5% Cotton

**Measurements** 1 - Central back length: 69cm 2 - Chest half: 60cm 3 - Bottom half: 63cm 4 - Sleeve length from neck: 69cm

**SKU: 948255016**

**WSP € 150.00**



## Shirt Simple Taj Flowers

**Color** Malachite Green

**Composition** 95% Silk | 5% Cotton

**Measurements** 1 - Central back length: 69cm 2 - Chest half: 60cm 3 - Bottom half: 63cm 4 - Sleeve length from neck: 69cm

**SKU: 948255017**

**WSP € 150.00**



## Shirt Simple Taj Flowers

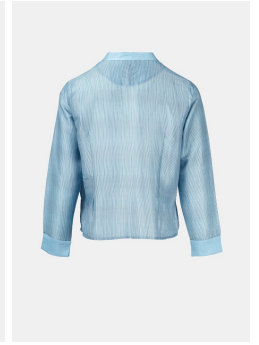
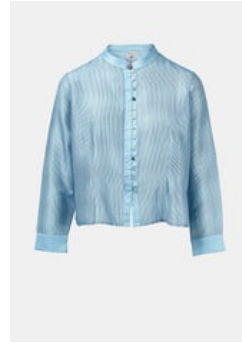
**Color** Dark Night

**Composition** 95% Silk | 5% Cotton

**Measurements** 1 - Central back length: 69cm 2 - Chest half: 60cm 3 - Bottom half: 63cm 4 - Sleeve length from neck: 69cm

**SKU: 948255018**

**WSP € 150.00**



## Shirt Geisha Stripes

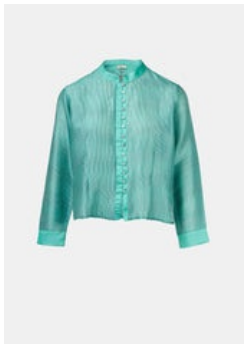
**Color** Forever Blue

**Composition** 15% Silk | 85% Cotton

**Measurements** 1 - Central back length 52cm 2 - Chest half 52cm 3 - Bottom half 50cm 4 - Sleeve length from neck 66cm

**SKU: 948255019**

**WSP € 121.00**



## Shirt Geisha Stripes

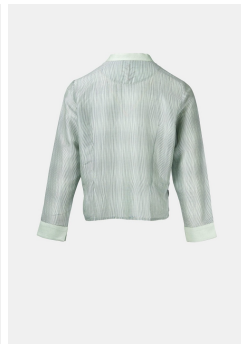
**Color** Malachite Green

**Composition** 15% Silk | 85% Cotton

**Measurements** 1 - Central back length 52cm 2 - Chest half 52cm 3 - Bottom half 50cm 4 - Sleeve length from neck 66cm

**SKU: 948255020**

**WSP € 121.00**



## Shirt Geisha Stripes

**Color** Silver Green

**Composition** 15% Silk | 85% Cotton

**Measurements** 1 - Central back length 52cm 2 - Chest half 52cm 3 - Bottom half 50cm 4 - Sleeve length from neck 66cm

**SKU: 948255021**

**WSP € 121.00**



## Trousers Kate Velvet Mood

**Size** 1 & 2

**Color** Dark Night

**Composition** 95% Cotton | 5% Viscose

**Measurements** 1. Waist Half relaxed: 42cm 2. Waist Half Stretched: 49cm 3. Hip Half relaxed: 60cm 4. Out Seam: 96cm 5. In Seam: 67cm 6. Botom: 24cm

**SKU: 948255022**

**WSP € 120.00**



# Fall Winter 25 - Panarchy



## Trousers Kate Velvet Mood

Size 1 & 2

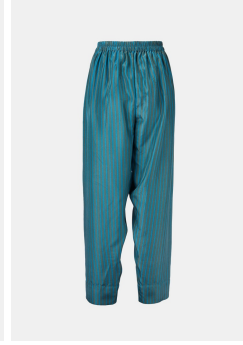
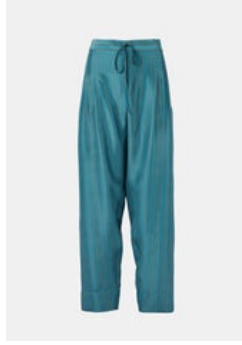
**Color** Tealpool

**Composition** 95% Cotton | 5% Viscose

**Measurements** 1. Waist Half relaxed 42cm 2. Waist Half Stretched 49cm 3. Hip Half relaxed 60cm 4. Out Seam 96cm 5. In Seam 67cm 6. Botom 24cm

**SKU: 948255023**

**WSP € 120.00**



## Trousers Peter Stripes

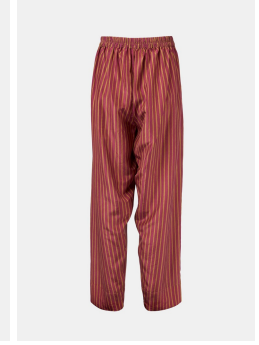
**Color** Duck Green | Snorkel Blue

**Composition** 100% Silk

**Measurements** 1. Waist Half relaxed: 43cm 2. Waist Half Stretched: 52cm 3. Hip Half relaxed: 54cm 4. Out Seam: 100cm 5. In Seam: 76cm 6. Botom: 19cm

**SKU: 948255026**

**WSP € 162.00**



## Trousers Peter Stripes

**Color** Prune | Cumin

**Composition** 100% Silk

**Measurements** 1. Waist Half relaxed: 43cm 2. Waist Half Stretched: 52cm 3. Hip Half relaxed: 54cm 4. Out Seam: 100cm 5. In Seam: 76cm 6. Botom: 19cm

**SKU: 948255027**

**WSP € 162.00**



## Trousers Peter Stripes

**Color** Duck Green | Cherry

**Composition** 100% Silk

**Measurements** 1. Waist Half relaxed: 43cm 2. Waist Half Stretched: 52cm 3. Hip Half relaxed: 54cm 4. Out Seam: 100cm 5. In Seam: 76cm 6. Botom: 19cm

**SKU: 948255028**

**WSP € 162.00**



## Skirt Vera Checks

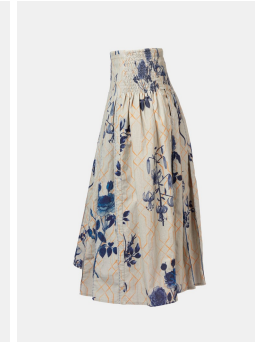
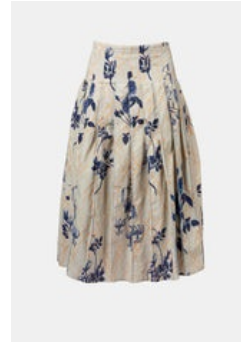
**Color** Multicolor

**Composition** 100% Cotton

**Measurements** 1. Waist half relaxed: 41cm 2. Waist half stretched: 45cm 3. Bottom Half: 115 4. Central Back length: 81cm

**SKU: 948255029**

**WSP € 120.00**



## Skirt Vera Taj Flowers

**Color** Multicolor

**Composition** 100% Cotton

**Measurements** 1. Waist half relaxed: 41cm 2. Waist half stretched: 45cm 3. Bottom Half: 115 4. Central Back length: 81cm

**SKU: 948255030**

**WSP € 134.00**



## Skirt Bulb Velvet Mood

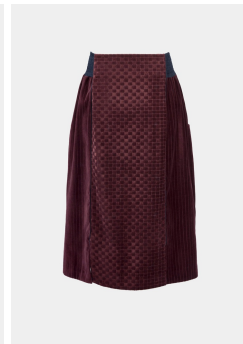
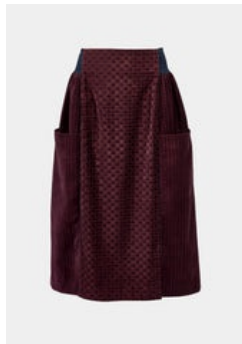
**Color** Walnut

**Composition** 100% Cotton

**Measurements** 1. Waist half relaxed 37cm 2. Waist half stretched 45cm 3. Bottom Half 64 4. Central Back length 75cm

**SKU: 948255031**

**WSP € 142.00**



## Skirt Bulb Checks and Stripes

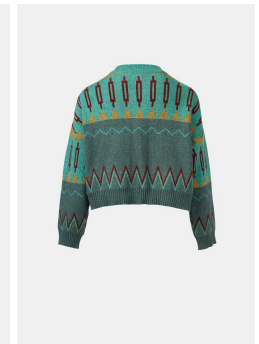
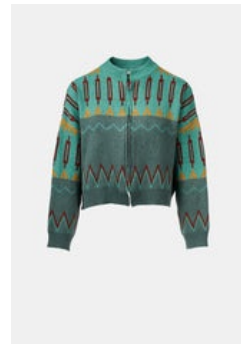
**Color** Tealpool

**Composition** 95% Cotton | 5% Viscose

**Measurements** 1. Waist Half relaxed 42cm 2. Waist Half Stretched 49cm 3. Hip Half relaxed 60cm 4. Out Seam 96cm 5. In Seam 67cm 6. Botom 24cm

**SKU: 948255034**

**WSP € 142.00**



## Bolero Moss Zip Malachite Green

**Color** Malachite Green | Yak Turquoise

**Composition** 40% Yak | 60% Wool

**Measurements** 1 - Central back length 49, 5cm 2 - Chest half 58cm 3 - Bottom half 50cm 4 - Sleeve length from neck 66cm

**SKU: 975255001**

**WSP € 161.00**



# Fall Winter 25 - Panarchy



## Bolero Moss Zip Dark Night

**Color** Dark Night | Dried Herbs

**Composition** 40% Yak | 60% Wool

**Measurements** 1 - Central back length 49, 5cm 2 - Chest half 58cm 3 - Bottom half 50cm 4 - Sleeve length from neck 66cm

**SKU: 975255002**

**WSP € 161.00**



## Bolero Moss Zip Cherry

**Color** Cherry | Navy

**Composition** 40% Yak | 60% Wool

**Measurements** 1 - Central back length 49, 5cm 2 - Chest half 58cm 3 - Bottom half 50cm 4 - Sleeve length from neck 66cm

**SKU: 975255003**

**WSP € 161.00**



## Cardigan Long Jacquard Cables

**Color** Amber | Navy

**Composition** 27% Cashmere | 66% wool | 7% silk

**Measurements** 1 - Central back length 70cm 2 - Chest half 59cm 3 - Bottom half 50cm 4 - Sleeve length from neck 65cm

**SKU: 975255004**

**WSP € 189.00**



## Cardigan Chaabee Twin

**Color** Amber | Dark Night

**Composition** 50% Wool | 50% Silk

**Measurements** 1 - Central back length: 66cm 2 - Chest half: 53cm 3 - Bottom half: 65cm 4 - Sleeve length from neck: 60cm

**SKU: 975255005**

**WSP € 130.00**



## Cardigan Chaabee Twin

**Color** Sage Green | Prune

**Composition** 50% Wool | 50% Silk

**Measurements** 1 - Central back length: 66cm 2 - Chest half: 53cm 3 - Bottom half: 65cm 4 - Sleeve length from neck: 60cm

**SKU: 975255006**

**WSP € 130.00**



## Coat Blazer Lapel

**Color** Multicolor

**Composition** 40% Yak | 60% Wool

**Measurements** 1 - Central back length 69cm 2 - Chest half 58cm 3 - Bottom half 56cm 4 - Sleeve length from neck 63cm

**SKU: 975255008**

**WSP € 157.00**



## Coat Loose Zip

**Color** Yak Natural | Dark Night

**Composition** 40% Yak | 60% Wool

**Measurements** 1 - Central back length 69cm 2 - Chest half 58cm 3 - Bottom half 56cm 4 - Sleeve length from neck 63cm

**SKU: 975255009**

**WSP € 193.00**



## Coat Loose Zip

**Color** Prune | Dried Herb

**Composition** 40% Yak | 60% Wool

**Measurements** 1 - Central back length 69cm 2 - Chest half 58cm 3 - Bottom half 56cm 4 - Sleeve length from neck 63cm

**SKU: 975255010**

**WSP € 193.00**



## Top Key Polo Collar

**Color** Amber | Dark Night

**Composition** 50% Wool | 50% Silk

**Measurements** 1 - Central back length: 64cm 2 - Chest half: 52cm 3 - Bottom half: 66cm 4 - Sleeve length: 61cm

**SKU: 975255021**

**WSP € 114.00**



# Fall Winter 25 - Panarchy



## Top Key Polo Collar

**Color** Sage Green | Prune

**Composition** 50% Wool | 50% Silk

**Measurements** 1 - Central back length: 64cm 2 - Chest half: 52cm 3 - Bottom half: 66cm 4 - Sleeve length: 61cm

**SKU: 975255023**

**WSP € 114.00**



## Top Key Round Neck

**Color** Navy

**Composition** 55% Cashmere | 45% Silk

**Measurements** 1 - Central back length: 65cm 2 - Chest half: 52cm 3 - Bottom half: 66cm 4 - Sleeve length: 60cm

**SKU: 975255024**

**WSP € 110.00**



## Top Key Round Neck

**Color** Sage Green

**Composition** 55% Cashmere | 45% Silk

**Measurements** 1 - Central back length: 65cm 2 - Chest half: 52cm 3 - Bottom half: 66cm 4 - Sleeve length: 60cm

**SKU: 975255025**

**WSP € 110.00**



## Top Key Round Neck Polo

**Color** Dark Night | Quartz Grey

**Composition** 55% Cashmere | 45% Silk

**Measurements** 1 - Central back length: 65cm 2 - Chest half: 52cm 3 - Bottom half: 70cm 4 - Sleeve length: 60cm

**SKU: 975255026**

**WSP € 110.00**



## Top Key Round Neck Polo

**Color** Duck Green | Quartz Grey

**Composition** 55% Cashmere | 45% Silk

**Measurements** 1 - Central back length 65cm 2 - Chest half 52cm 3 - Bottom half 70cm 4 - Sleeve length 60cm

**SKU: 975255027**

**WSP € 110.00**



## Top Key Turtle Neck

**Color** Cumin

**Composition** 55% Cashmere | 45% Silk

**Measurements** 1 - Central back length: 63cm 2 - Chest half: 52cm 3 - Bottom half: 65cm 4 - Sleeve length: 63cm

**SKU: 975255028**

**WSP € 124.00**



## Top Key Turtle Neck

**Color** Cherry

**Composition** 55% Cashmere | 45% Silk

**Measurements** 1 - Central back length: 63cm 2 - Chest half: 52cm 3 - Bottom half: 65cm 4 - Sleeve length: 63cm

**SKU: 975255029**

**WSP € 124.00**



## Top Key Turtle Neck

**Color** Forever Blue

**Composition** 55% Cashmere | 45% Silk

**Measurements** 1 - Central back length: 63cm 2 - Chest half: 52cm 3 - Bottom half: 65cm 4 - Sleeve length: 63cm

**SKU: 975255030**

**WSP € 124.00**



## Top Key Turtle Neck

**Color** Dark Night

**Composition** 55% Cashmere | 45% Silk

**Measurements** 1 - Central back length: 63cm 2 - Chest half: 52cm 3 - Bottom half: 65cm 4 - Sleeve length: 63cm

**SKU: 975255031**

**WSP € 124.00**



# Fall Winter 25 - Panarchy



## Top Key Turtle Neck

**Color** Malachite Green

**Composition** 55% Cashmere | 45% Silk

**Measurements** 1 - Central back length: 63cm 2 - Chest half: 52cm 3 - Bottom half: 65cm 4 - Sleeve length: 63cm

**SKU: 975255032**

**WSP € 124.00**



## Vest Tender Jacquard Cable

**Color** Cherry | Navy

**Composition** 27% cashmere | 66% wool | 7% silk

**Measurements** 1 - Central back length 58cm 2 - Chest half 48cm 3 - Bottom half 45cm

**SKU: 975255058**

**WSP € 121.00**



## Vest Tender Jacquard Cable

**Color** Amber | Navy

**Composition** 27% cashmere | 66% wool | 7% silk

**Measurements** 1 - Central back length 58cm 2 - Chest half 48cm 3 - Bottom half 45cm

**SKU: 975255059**

**WSP € 121.00**



## Dress Cosmos Bayadere

**Color** Cumin

**Composition** 55% Cashmere | 45% Silk

**Measurements** 1 - Central back length: 123cm 2 - Chest half: 39, 5cm 3 - Bottom half: 73cm

**SKU: 975255039**

**WSP € 203.00**



## Dress Cosmos Bayadere

**Color** Cherry

**Composition** 55% Cashmere | 45% Silk

**Measurements** 1 - Central back length: 123cm 2 - Chest half: 39, 5cm 3 - Bottom half: 73cm

**SKU: 975255038**

**WSP € 203.00**



## Trousers Oriental Hemp Stripes

**Color** Natural Yak

**Composition** 40% Yak | 58% Wool 2% Hemp

**Measurements** 1. Waist Half relaxed 36cm 2. Waist Half Stretched 50cm 3. Hip Half relaxed 50cm 4. Out Seam 95cm 5. In Seam 61, 5cm 6. Botom 19cm

**SKU: 975255044**

**WSP € 177.00**



## Trousers Oriental Hemp Stripes

**Color** Cherry

**Composition** 40% Yak | 58% Wool 2% Hemp

**Measurements** 1. Waist Half relaxed 36cm 2. Waist Half Stretched 50cm 3. Hip Half relaxed 50cm 4. Out Seam 95cm 5. In Seam 61, 5cm 6. Botom 19cm

**SKU: 975255045**

**WSP € 177.00**



## Trousers Oriental Hemp Stripes

**Color** Peacock

**Composition** 40% Yak | 58% Wool 2% Hemp

**Measurements** 1. Waist Half relaxed 36cm 2. Waist Half Stretched 50cm 3. Hip Half relaxed 50cm 4. Out Seam 95cm 5. In Seam 61, 5cm 6. Botom 19cm

**SKU: 975255046**

**WSP € 177.00**



## Trousers Oriental Hemp Stripes

**Color** Dark Night

**Composition** 40% Yak | 58% Wool 2% Hemp

**Measurements** 1. Waist Half relaxed 36cm 2. Waist Half Stretched 50cm 3. Hip Half relaxed 50cm 4. Out Seam 95cm 5. In Seam 61, 5cm 6. Botom 19cm

**SKU: 975255047**

**WSP € 177.00**



# Fall Winter 25 - Panarchy



## Coat Shy Balloon

**Color** Dried Herb

**Composition** 100% Wool

**Measurements** 1 - Central back length 108cm 2 - Chest half 72cm 3 - Bottom half 94cm 4 - Sleeve length from neck 73cm

**SKU: 975255048**

**WSP € 234.00**



## Coat Shy Balloon

**Color** Malachite Green

**Composition** 100% Wool

**Measurements** 2 - Central back length 108cm 2 - Chest half 72cm 3 - Bottom half 94cm 4 - Sleeve length from neck 73cm

**SKU: 975255049**

**WSP € 234.00**



## Coat Ailko Hemp Checks

**Color** Natural Yak

**Composition** 40% Yak | 55% Wool 4% Hemp | 1% Silk

**Measurements** 1 - Central back length 61cm 2 - Chest half 75cm 3 - Bottom half 75cm 4 - Sleeve length from neck 70, 5cm

**SKU: 975255050**

**WSP € 219.00**



## Coat Ailko Hemp Checks

**Color** Amber

**Composition** 40% Yak | 55% Wool 4% Hemp | 1% Silk

**Measurements** 1 - Central back length 61cm 2 - Chest half 75cm 3 - Bottom half 75cm 4 - Sleeve length from neck 70, 5cm

**SKU: 975255051**

**WSP € 219.00**



## Coat Ailko Hemp Checks

**Color** Fuschia

**Composition** 40% Yak | 55% Wool 4% Hemp | 1% Silk

**Measurements** 1 - Central back length 61cm 2 - Chest half 75cm 3 - Bottom half 75cm 4 - Sleeve length from neck 70, 5cm

**SKU: 975255052**

**WSP € 219.00**



## Coat Ailko Hemp Checks

**Color** Navy

**Composition** 40% Yak | 55% Wool 4% Hemp | 1% Silk

**Measurements** 1 - Central back length 61cm 2 - Chest half 75cm 3 - Bottom half 75cm 4 - Sleeve length from neck 70, 5cm

**SKU: 975255053**

**WSP € 219.00**



## Coat Lall Hemp Stripes

**Color** Natural Yak

**Composition** 40% Yak | 58% Wool 2% Hemp

**Measurements** 1 - Central back length 110cm 2 - Chest half 70cm 3 - Bottom half 102cm 4 - Sleeve length from neck 65cm

**SKU: 975255054**

**WSP € 261.00**



## Coat Lall Hemp Stripes

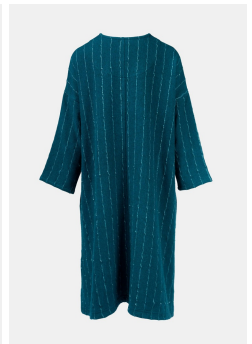
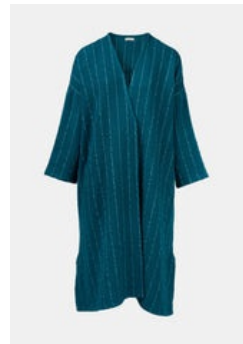
**Color** Dark Night

**Composition** 40% Yak | 58% Wool 2% Hemp

**Measurements** 1 - Central back length 110cm 2 - Chest half 70cm 3 - Bottom half 102cm 4 - Sleeve length from neck 65cm

**SKU: 975255055**

**WSP € 261.00**



## Coat Lall Hemp Stripes

**Color** Peacock

**Composition** 40% Yak | 58% Wool 2% Hemp

**Measurements** 1 - Central back length 110cm 2 - Chest half 70cm 3 - Bottom half 102cm 4 - Sleeve length from neck 65cm

**SKU: 975255056**

**WSP € 261.00**

# Fall Winter 25 - Panarchy



## Coat Lall Hemp Stripes

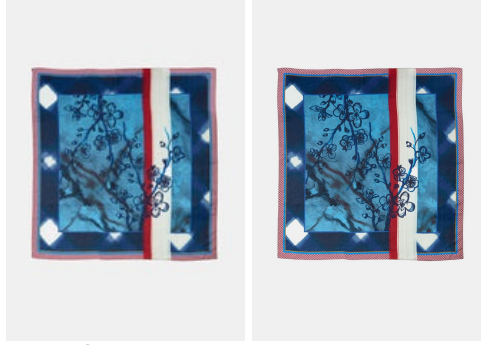
Color Cherry

Composition 40% Yak | 58% Wool 2% Hemp

Measurements 1 - Central back length 110cm 2 - Chest half 70cm 3 - Bottom half 102cm 4 - Sleeve length from neck 65cm

SKU: 975255057

WSP € 261.00



## Scarf Square Cherry Blossom

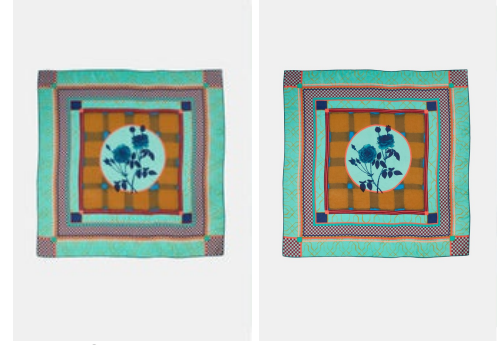
Color Multicolor

Composition 100% Silk (40g)

Measurements 110x110 cm

SKU: 908257001

WSP € 95.00



## Scarf Square Blue Roses

Color Multicolor

Composition 100% Silk (40g)

Measurements 110x110 cm

SKU: 908257003

WSP € 95.00



## Scarf Square Taj Flowers

Color Multicolor

Composition 100% Silk (taby 30g)

Measurements 55x55 cm

SKU: 908257005

WSP € 44.00



## Scarf Square Blue Roses

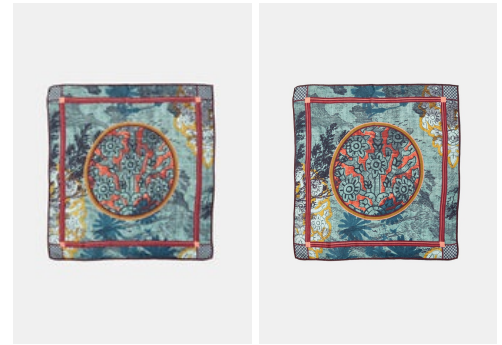
Color Multicolor

Composition 100% Silk (taby 30g)

Measurements 55x55 cm

SKU: 908257006

WSP € 44.00



## Scarf Square Indian Block

Color Multicolor

Composition 100% Silk (taby 30g)

Measurements 55x55 cm

SKU: 908257007

WSP € 44.00



## Scarf Square Bird Song

Color Multicolor

Composition 100% Silk (taby 30g)

Measurements 55x55 cm

SKU: 908257008

WSP € 44.00



## Stole rectangular Taj Flowers and Stripes

Color Multicolor

Composition 100% Silk (taby 30g)

Measurements 55x220 cm

SKU: 908257009

WSP € 84.00



## Stole rectangular Rose Dot

Color Multicolor

Composition 100% Silk (taby 30g)

Measurements 55x220 cm

SKU: 908257010

WSP € 84.00



CLIENT NAME .....  
 ADDRESS .....  
 MAIL .....  
 ORDER DATE .....

VAT NR: .....  
 CONTACT .....

**TRACES OF ME - Fall Winter 2025 - PANARCHY**

01/03/2024

IMAGE	REF.	FAMILY	MODEL	NAME	COLOR	COMPOSITION	SIZE	Professional price €	*Retail Price reco \$	QTY PCS	MIN ORDER
<b>Coats</b>											
	*948255001*	Coat	Audrey	Jammu	Coffee Bean	50% Cotton   50% Viscose	One size	257 €	630 €		2
	*948255004*	Coat	Garçonette	Amber	Amber	50% Cotton   50% Silk	One size	171 €	420 €		2
	*948255005*	Coat	Garçonette	Burt Siena	Burnt Sienna	50% Cotton   50% Silk	One size	171 €	420 €		2
<b>Dresses</b>											
	*908255001*	Dress	Resort	Strelitia	Multicolour	100% Silk	One size	257 €	630 €		2
	*908255002*	Dress	Resort	Cherry Blossom	Multicolour	100% Silk	One size	257 €	630 €		2
<b>Dress POPPY</b>											
	*492255001*	Dress Poppy	Abyss	Cherry Blossom	Multicolour	TOP 55% Cashmere   45% Silk BOTTOM-100% Silk	One size	234 €	575 €		2
	*492255002*	Dress Poppy	Abyss	Savanah	Multicolour	TOP 55% Cashmere   45% Silk BOTTOM-100% Silk	One size	234 €	575 €		2
	*492255004*	Dress Poppy	Cancan	Prune	Prune	TOP-50% Wool   50% Silk BOTTOM - 100% Silk	One size	202 €	495 €		2
	*492255005*	Dress Poppy	Cancan	Dark Night	Dark Night	TOP-50% Wool   50% Silk BOTTOM - 100% Silk	One size	202 €	495 €		2
	*492255003*	Dress Poppy	Cancan	Ink Stripes	Dark Night   Vanilla	TOP-50% Wool   50% Silk BOTTOM - 100% Silk	One size	202 €	495 €		2
<b>Tunics</b>											
	*908255010*	Tunic	Chopin	Taj Flowers	Duck Green	100% Silk	One size	243 €	597 €		2
	*908255011*	Tunic	Chopin	Taj Flowers	Cumin	100% Silk	One size	243 €	597 €		2
	*908255012*	Tunic	Chopin	Taj Flowers	Snokel Blue	100% Silk	One size	243 €	597 €		2
<b>Shirts</b>											
	*908255003*	Shirt	Botanic Collar	Watercolor Checks	Indigo   Stone	100% Silk	One size	144 €	355 €		2
	*908255004*	Shirt	Botanic Collar	Watercolor Checks	Malachite Green   Cheery	100% Silk	One size	144 €	355 €		2
	*908255005*	Shirt	Botanic Collar	Watercolor Checks	Amber   Stone	100% Silk	One size	144 €	355 €		2
	*908255006*	Shirt	Anna Long Sleeves	Magnolia	Forever Blue	30% Silk   70% Cotton	One size	76 €	187 €		2
	*908255007*	Shirt	Anna Long Sleeves	Magnolia	Bok Joy	30% Silk   70% Cotton	One size	76 €	187 €		2
	*908255008*	Shirt	Anna Long Sleeves	Magnolia	Silver Green	30% Silk   70% Cotton	One size	76 €	187 €		2
	*948255015*	Shirt	Simple	Taj Flowers	Silver Green	95% Silk   5% Cotton	One size	150 €	368 €		2

CLIENT NAME .....  
 ADDRESS .....  
 MAIL .....  
 ORDER DATE .....

VAT NR: .....  
 CONTACT .....

**TRACES OF ME - Fall Winter 2025 - PANARCHY**

01/03/2024

IMAGE	REF.	FAMILY	MODEL	NAME	COLOR	COMPOSITION	SIZE	Professional price €	*Retail Price reco \$	QTY PCS	MIN ORDER
	*948255016*	Shirt	Simple	Taj Flowers	Multicolour	95% Silk   5% Cotton	One size	150 €	368 €		2
	*948255017*	Shirt	Simple	Taj Flowers	Malachite Green	95% Silk   5% Cotton	One size	150 €	368 €		2
	*948255018*	Shirt	Simple	Taj Flowers	Dark Night	95% Silk   5% Cotton	One size	150 €	368 €		2
	*948255019*	Shirt	Geisha	Stripes	Forever Blue	15% Silk   85% Cotton	One size	121 €	297 €		2
	*948255020*	Shirt	Geisha	Stripes	Malachite Green	15% Silk   85% Cotton	One size	121 €	297 €		2
	*948255021*	Shirt	Geisha	Stripes	Silver Green	15% Silk   85% Cotton	One size	121 €	297 €		2
<b>Trousers</b>											
	*948255022*	Trousers	Kate	Velvet mood	Dark Night	95% Cotton   5% Viscose	Size 1	120 €	294 €		1
	*948256022*	Trousers	Kate	Velvet mood	Dark Night	95% Cotton   5% Viscose	Size 2	120 €	294 €		1
	*948255023*	Trousers	Kate	Velvet mood	Tealpool	95% Cotton   5% Viscose	Size 1	120 €	294 €		1
	*948256023*	Trousers	Kate	Velvet mood	Tealpool	95% Cotton   5% Viscose	Size 2	120 €	294 €		1
	*948255026*	Trousers	Peter	Stripes	Duck Green   Snorkel Blue	100% Silk	One size	162 €	397 €		2
	*948255027*	Trousers	Peter	Stripes	Prune   Cumin	100% Silk	One size	162 €	397 €		2
	*948255028*	Trousers	Peter	Stripes	Duck Green   Cherry	100% Silk	One size	162 €	397 €		2
<b>Dress Skirts</b>											
	*948255029*	Skirt	Vera	Checks	Multicolour	100% Cotton	One size	120 €	295 €		2
	*948255030*	Skirt	Vera	Taj Flowers	Stone   Indigo	100% Cotton	One size	134 €	335 €		2
	*948255031*	Skirt	Bulb	Velvet mood	Walnut	100% Cotton	One size	142 €	350 €		2
	*948255034*	Skirt	Bulb Checks & Stripes	Velvet mood	Plum	100% Cotton	One size	142 €	350 €		2
<b>KNITWEAR</b>											
<b>Boleros &amp; Coats &amp; Cardigans</b>											
	*975255001*	Bolero	Moss	Zip	Malachite Green   Yak Turquoise	40%Yak   60%Wool	One size	161 €	398 €		2
	*975255002*	Bolero	Moss	Zip	Royal   Dried Herbs	40%Yak   60%Wool	One size	161 €	398 €		2
	*975255003*	Bolero	Moss	Zip	Cherry   Navy	40%Yak   60%Wool	One size	161 €	398 €		2



CLIENT NAME .....  
 ADDRESS .....  
 MAIL .....  
 ORDER DATE .....

VAT NR: .....  
 CONTACT .....

TRACES OF ME - Fall Winter 2025 - PANARCHY

01/03/2024

IMAGE	REF.	FAMILY	MODEL	NAME	COLOR	COMPOSITION	SIZE	Professional price €	*Retail Price reco \$	QTY PCS	MIN ORDER
	*975255004*	Cardigan	Long	Jacquard Cable	Amber I Navy	27% cashmere I 66% wool I 7% silk	One size	189 €	465 €		2
	*975255005*	Cardigan	Chaabee	Twin	Amber I Dark Night	50% Wool I 50% Silk	One size	130 €	325 €		2
	*975255006*	Cardigan	Chaabee	Twin	Sage Green I Prune	50% Wool I 50% Silk	One size	130 €	325 €		2
	*975255008*	Coat	Blazer	Lapel	Multicolor	40% Yak I 60% Wool	One size	157 €	385 €		2
	*975255009*	Coat	Loose	Zip	Yak Natural I Dark Night	40% Yak I 60% Wool	One size	193 €	475 €		2
	*975255010*	Coat	Loose	Zip	Prune I Dried Herb	40% Yak I 60% Wool	One size	193 €	475 €		2
<b>Tops</b>											
	*975255021*	Top	Key	Polo Collar	Amber I Dark Night	50% Wool I 50% Silk	One size	114 €	280 €		2
	*975255023*	Top	Key	Polo Collar	Sage Green I Prune	50% Wool I 50% Silk	One size	114 €	280 €		2
	*975255024*	Top	Key	Round Neck	Navy	55% Cashmere I 45% Silk	One size	110 €	275 €		2
	*975255025*	Top	Key	Round Neck	Sage Green	55% Cashmere I 45% Silk	One size	110 €	275 €		2
	*975255026*	Top	Key	Round Neck Polo	Dark Night I Quartz Grey	55% Cashmere I 45% Silk	One size	110 €	275 €		2
	*975255027*	Top	Key	Round Neck Polo	Duck Green I Quartz Grey	55% Cashmere I 45% Silk	One size	110 €	275 €		2
	*975255028*	Top	Key	Turtle Neck	Cumin	55% Cashmere I 45% Silk	One size	124 €	310 €		2
	*975255029*	Top	Key	Turtle Neck	Cherry	55% Cashmere I 45% Silk	One size	124 €	310 €		2
	*975255030*	Top	Key	Turtle Neck	Forever Blue	55% Cashmere I 45% Silk	One size	124 €	310 €		2
	*975255031*	Top	Key	Turtle Neck	Dark Night	55% Cashmere I 45% Silk	One size	124 €	310 €		2
	*975255032*	Top	Key	Turtle Neck	Malachite Green	55% Cashmere I 45% Silk	One size	124 €	310 €		2
<b>Vest</b>											
	*975255058*	Vest	Tender	Jacquard Cable	Cherry I Navy	27% cashmere I 66% wool I 7% silk	One size	121 €	298 €		2
	*975255059*	Vest	Tender	Jacquard Cable	Amber I Navy	27% cashmere I 66% wool I 7% silk	One size	121 €	298 €		2
<b>DRESS</b>											
	*975255038*	Dress	Cosmos	Bayadere	Cherry	55% Cashmere I 45% Silk	One size	203 €	498 €		2

CLIENT NAME .....  
 ADDRESS .....  
 MAIL .....  
 ORDER DATE .....

VAT NR: .....  
 CONTACT .....

**TRACES OF ME - Fall Winter 2025 - PANARCHY**

01/03/2024

IMAGE	REF.	FAMILY	MODEL	NAME	COLOR	COMPOSITION	SIZE	Professional price €	*Retail Price reco \$	QTY PCS	MIN ORDER
	*975255039*	Dress	Cosmos	Bayadere	Cumin	55% Cashmere I 45% Silk	One size	203 €	498 €		2
<b>HAND WOVEN</b>											
<b>Trousers</b>											
	*975255044*	Trousers	Oriental	Hemp Stripes	Natural Yak	40% Yak I 58% Wool 2% Hemp	One size	177 €	435 €		2
	*975255045*	Trousers	Oriental	Hemp Stripes	Cherry	40% Yak I 58% Wool 2% Hemp	One size	177 €	435 €		2
	*975255046*	Trousers	Oriental	Hemp Stripes	Peacock	40% Yak I 58% Wool 2% Hemp	One size	177 €	435 €		2
	*975255047*	Trousers	Oriental	Hemp Stripes	Dark Night	40% Yak I 58% Wool 2% Hemp	One size	177 €	435 €		2
<b>Coats</b>											
	*975255048*	Coat	Shy	Balloon	Dried Herb	100% Wool	One size	234 €	576 €		2
	*975255049*	Coat	Shy	Balloon	Malachite Green	100% Wool	One size	234 €	576 €		2
	*975255050*	Coat	Aiko	Hemp Checks	Natural Yak	40% Yak I 55% Wool 4% Hemp I 1% Silk	One size	219 €	538 €		2
	*975255051*	Coat	Aiko	Hemp Checks	Amber	40% Yak I 55% Wool 4% Hemp I 1% Silk	One size	219 €	538 €		2
	*975255052*	Coat	Aiko	Hemp Checks	Fuschia	40% Yak I 55% Wool 4% Hemp I 1% Silk	One size	219 €	538 €		2
	*975255053*	Coat	Aiko	Hemp Checks	Navy	40% Yak I 55% Wool 4% Hemp I 1% Silk	One size	219 €	538 €		2
	*975255054*	Coat	Lall	Hemp Stripes	Natural Yak	40% Yak I 58% Wool 2% Hemp	One size	261 €	642 €		2
	*975255055*	Coat	Lall	Hemp Stripes	Dark Night	40% Yak I 58% Wool 2% Hemp	One size	261 €	642 €		2
	*975255056*	Coat	Lall	Hemp Stripes	Peacock	40% Yak I 58% Wool 2% Hemp	One size	261 €	642 €		2
	*975255057*	Coat	Lall	Hemp Stripes	Cherry	40% Yak I 58% Wool 2% Hemp	One size	261 €	642 €		2
<b>Scarves &amp; Stoles</b>											
	*908257001*	Scarf	Square	Cherry Blossom	Multicolour	100% Silk (Hobotai 40g)	110X110cm	95 €	188 €		2
	*908257002*	Scarf	Square	Savanah	Multicolour	100% Silk (Hobotai 40g)	110X110cm	95 €	188 €		2
	*908257003*	Scarf	Square	Blue Roses	Multicolour	100% Silk (Hobotai 40g)	110X110cm	95 €	188 €		2
	*908257005*	Scarf	Square	Taj Flowers	Multicolour	100% Silk (taby 30g)	55X55cm	44 €	87 €		2
	*908257006*	Scarf	Square	Blue Roses	Multicolour	100% Silk (taby 30g)	55X55cm	44 €	87 €		2







CLIENT NAME .....  
 ADDRESS .....  
 MAIL .....  
 ORDER DATE .....

VAT NR: .....  
 CONTACT .....

**TRACES OF ME - Fall Winter 2025 - PANARCHY**

01/03/2024

IMAGE	REF.	FAMILY	MODEL	NAME	COLOR	COMPOSITION	SIZE	Professional price €	*Retail Price reco \$	QTY PCS	MIN ORDER
	*908257007*	Scarf	Square	Indian Block	Multicolour	100% Silk (taby 30g)	55X55cm	<b>44 €</b>	<b>87 €</b>		2
	*908257008*	Scarf	Square	Birdsong	Multicolour	100% Silk (taby 30g)	55X55cm	<b>44 €</b>	<b>87 €</b>		2
	*908257009*	Stole	Rectangular	Taf Flowers and	Multicolour	100% Silk (taby 30g)	55X220cm	<b>84 €</b>	<b>164 €</b>		2
	*908257010*	Stole	Rectangular	Rose Dot	Multicolour	100% Silk (taby 30g)	55X220cm	<b>84 €</b>	<b>164 €</b>		2

**ACCESSORIES**

Collares & Belts Sales Upon Request

Professionals Sales Price List mars 2024 Traces of Me

\*RETAIL PRICE : Recommande public price for authorized distributors

**Email: sales@tracesofmetm.com**

## GENERAL TERMS AND CONDITIONS OF SALES- MARCH 2025

Traços de Mim Decorações Lda., a Portuguese company registered at Conservatória do Registo Comercial de Cascais under number 504036386, with head office in Largo de S. João, nº 3, 1º, Comporta, 7580-624, Portugal, with the joint stock of € 200.000,00, VAT number is PT 504036386, hereinafter Traces of Me.

These are the terms and conditions governing Traces of Me Home and Fashion collection orders, sales and deliveries to professional Clients. By placing an order with us you are consenting to be bound by to these Terms.

### COMMERCIAL AND OPERATIONAL CLAUSES

#### I- COMMERCIAL TERMS:

1. Traces of Me Home and Fashion collection is exclusively in sale for Professional Clients.
2. All orders placed will be validated by Traces of Me within 3 days, in order to confirm stock availability of the items ordered and the respective delivery dates.
3. All the prices applied will added up legal VAT in force, except if:
  - a) The buyer is an economic operator for VAT purposes registered in the European Union (EU) for transnational transactions of goods and services - Taxpayer valid in VIES;
  - b) The buyer is an economic operator with a tax domicile outside the EU and the goods have the same destination – customs clearance as proof of export.

#### II- MINIMUM VALUE ORDER:

1. **HOME:** For the first order, the minimum value is **2.000 €** and for reorders orders is 300 €.
2. **FASHION:** **FALL WINTER 25** for the first order, the minimum value is **3.500 €**. For reorders, there is no minimum value. **SPRING SUMMER 25** for the first order, the minimum value is 3.500 €. For reorders, there is no minimum value.
3. On the first order from the Fashion collection, the buyer may exchange up to 10% of the purchased items, provided that the total value is equal to or exceeds the original order, subject to stock availability at the time. All costs associated with the exchange process are the buyer's responsibility.

#### III- DELIVERY DELAY:

1. **HOME:** 1 to 2 weeks depending on stocks availability, unless differently marked in the item.
2. **FASHION:** **SPRING SUMMER 2025:** delivery 15 March  
**FALL WINTER 25: Between September 15 and 30, 2025**
3. Delivery delays are approximate, so it will be updated by Traces of Me, if and when needed.



#### **IV-TRANSPORT:**

1. If and when the items ordered shall be shipped by Traces of Me to the buyer, all the risks to the items are borne by the buyer, from the moment the items are loaded on the means of transport.
2. Traces of Me shall not be liable for any delays, loss or damage of the items order during transit.

#### **V- SHIPPING AND CUSTOMS COSTS:**

1. Shipping costs are not included in orders price.
2. The buyer may choose to be responsible for transportation.
3. There is also the option for the buyer to collect the items ordered directly at Traces of Me's showroom.
4. The above referred options and, if it is the case, the shipping costs to be paid to Traces of Me by the buyer, are always determined in the purchase order.
5. For orders above € 5.800,00, the shipping costs will be fully borne by Traces of Me.
6. All the customs costs, namely those referring to the shipment of items to outside the European Union, are fully borne by the buyer

#### **VI- PAYMENT TERMS:**

1. Orders are confirmed upon advance payment of the total or partial order value within 14 days of receiving the proforma invoice. If the order is placed less than 14 days before the production closing date, the payment deadline will coincide with that date.
2. After that term, the order will be registered as "non valid" and Traces of Me cannot guarantee stock availability and / or delivery time.
3. Payments may be made in two alternative ways:

##### **(I) PRE-ORDER FALL WINTER 25**

- a) 100% with order placement, granting a 3% discount to the buyer;
  - b) 50% deposit with order placement and the remaining 50% paid 2 weeks before shipment.
4. Traces of Me reserves the right to cancel the order if the remaining 50% is not paid within 15 days after the notice of availability for shipment. In such cases, the order confirmation deposit will be retained and will not be refunded to the Buyer.
  5. For online orders, the buyer shall choose partial payment in the purchase order and will be contacted by email, from Traces of Me.

##### **(II) IMMEDIATE DELIVERY:** 100% with the order placement.

## **VII- PAYMENT OPTIONS:**

1. Payments will be made in Euros and by Bank Transfer, Credit Card or PayPal. (Bank cheques are not accepted):

Beneficiary name: **TRAÇOS DE MIM DECORAÇÕES LDA.**

Bank: Bankinter

**Account: 10500071756**

**IBAN: PT50 026901050020007175612**

BIC/SWIFT: BKBKPTPL

Bank address: Rua Sebastião Carvalho e Melo, 6 – 2750-483 Cascais, Portugal

**Payments made via Credit Card or Paypal, will incur an additional charge of 3,5% to cover the associated transaction fees.**

2. Buyer shall email to Traces of Me the bank transfer receipt, mentioning is Traces of Me number.

## **VIII- COMPLAINTS AND RETURNS:**

1. Buyer shall verify the condition of packaging upon delivery of the items ordered and in case of damages due to transport, shall take photos and participate the occurrence, when in presence of the carrier.

2. If and when the shipment is made by Traces of Me, the information referred in number one, above, must be transmitted immediately by the buyer, in writing, to Traces of Me.

3. Upon delivery, all items order must be carefully inspected and checked by the buyer.

4. Complaints will only be considered by Traces of Me within 7 days term, after the reception of the items order, and be communicated by email to [admin@tracesofmetm.com](mailto:admin@tracesofmetm.com).

5. Returned items must be packed in their original packaging and with the original labels.

6. When due, in case of reasoned returns, the replacement of items will be fully borne by Traces of Me.

7. Traces of Me reserves it right to refuse complaints and returns if, after verification, there is no objective grounds to the complaint, and if it is this case, the item will be returned at buyer expenses.



## **JURIDICAL CLAUSES**

### **IX- INTELLECTUAL AND INDUSTRIAL PROPERTY:**

1. Traces of Me is a registered trademark of Traços de Mim Decorações Lda.
2. Buyer acknowledges and agree that all copyright, trademarks and all other intellectual property rights in all material or content supplied shall remain at all times vested in Traces of Me, as licensors. You are permitted to use this material only as expressly authorized by us or our licensors.

### **X- EVENTS OUTSIDE TRACES OF ME CONTROL**

Traces of Me will not be liable or responsible for any failure to perform, or delay in performance of any of our obligations that is caused by events outside our reasonable control (“Force Majeure Event”).

### **XI- TRACES OF ME RIGHT TO VARY THESE TERMS AND CONDITIONS**

1. Traces of Me have the right to revise and amend these terms and conditions from time to time.
2. Buyer will be subject to the terms and conditions in force at the time the purchase order is placed, unless any change to these terms and conditions is required to be made by law or governmental authority (in which case it will apply to orders previously placed by the buyer).

### **XII- ENTIRE AGREEMENT:**

1. These terms and conditions constitute the entire agreement between Traces of Me and the buyer pertaining to the subject matter hereof and merges all prior negotiations and drafts of the parties with regard to the transactions contemplated herein.
2. Any and all other written or oral agreements existing between the parties hereto regarding such transactions are expressly canceled.

### **XIII- AMENDMET AND WAIVER**

1. Any term of these terms and conditions may be amended with the prior written consent of both parties.
2. Any amendment or waiver that would be effected in accordance with this Section shall be binding upon the parties and their respective successors and assigns.
3. Failure to enforce any provision of these terms and conditions by a party shall not constitute a waiver of any term hereof by such party.

### **XIV- LAW AND JURISDICTION**

1. These terms and conditions will be governed by Portuguese law.
2. Any dispute arising from or related to these terms and conditions shall be subjected exclusively to the jurisdiction of the Portuguese courts in Lisbon.