

# LANDSCAPE & URBAN DESIGN

69

Sep/Oct 2024

Price £4<sup>95</sup>

landud.co.uk



## The importance of landscape irrigation and efficient water use

Efficient water management is not just a necessity; it's a critical aspect of sustainable landscape design



## Revitalising a High Street

A harmonious blend of nature and design in Canterbury



## Kress RTKn Robotic Mowers

Emission-free turf care for greenkeepers



# HARDSCAPE

Inspire. Select. Supply.

## Commercial Stone & Paving Inspiring Urban Spaces for 30 years

[enq@hardscape.co.uk](mailto:enq@hardscape.co.uk)

01204 565 500

Cadence, King's Cross, London

# CONTENTS ISSUE 69

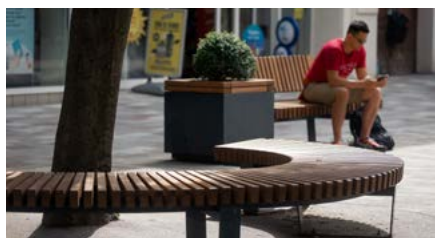
## THIS ISSUES MAIN FEATURES



**GroundsFest Show Preview | 40 - 51**



**Green & Blue Infrastructure | 52 - 67**



**Street Furniture | 74 - 83**



**Saltex Show Preview | 84 - 97**

### Garden Design

6 - The Importance of Landscape Irrigation and Efficient Water Use.

20 - Elevate your Outdoor Space with LifestyleGarden®.

30 - Turn neglected weedy patches into stylish, statement areas with UltraScape's brand new product range.

### Decking

34 - Composite to Transform the Future of Street Furniture.

36 - Luxury outdoor spaces with Trekker at Armathwaite Hall.

### Glee Show Preview

38 - Glee celebrates 50 years with exciting show features and seminar sessions.

### GroundsFest Show Preview

40 - GroundsFest 2024 promises an even more impressive lineup of exhibitors, new features, and experiences.

42 - Agrovista Amenity to make exciting debut at GroundsFest 2024.

48 - Sustainable seed guaranteed as DLF return to GroundsFest.

50 - Make Light of Large Lawns with New Greenworks 60v Battery-Powered Ride-on Lawnmowers.

### Green & Blue Infrastructure

52 - Transforming a Brown Field into Urban Nature.

56 - GreenBlue Urban showcases their collaboration on the transformative Wood Street project in Cardiff.

58 - Green-tech helps The Point at Polzeath meet planning regulations with a sustainable Green Roof Solution.

### Concrete & Stonework

68 - Add kerb appeal by enhancing aesthetics with concrete fencing.

72 - Marshalls launches new, easy-fit solution for patios and driveways.

### Street Furniture

76 - Enhancing Canterbury High Street: A Harmonious Blend of Nature and Design.

80 - Combining Coastal Defences with Bespoke Design: Woodscape's Role in the Southsea Coastal Scheme.

82 - Sycamore at Northgate Park Hospital sets a new standard for mental health facility design.

### Saltex Show Preview

84 - SALTEX 2024 is set to host the most extensive free educational event in the sector, Learning LIVE.

96 - INFINICUT® strengthen support in key counties with appointment of Wildwood Machinery.

### Landscaping Services

108 - An 'overgrown wasteland' has been transformed into a flourishing community learning environment.

Accredited  
Members  
of BALI



### Publishing Director

Martin Holmes  
martin@mhmagazine.co.uk

### Sales Director

Lee Martin  
lee@landud.co.uk

### Digital Manager

Jamie Bullock  
jamie@mhmagazine.co.uk

### Editor-in-Chief

Antony Holter  
editor@mmhmagazine.co.uk

### Editor

Lorna Davidson  
lorna@landud.co.uk

### Business Manager

Josh Holmes  
josh@mhmagazine.co.uk

### Studio Designer

Sarah Johnson  
sarah.johnson@mhmagazine.co.uk

Marketing Enquiries - 01227 936974  
Editorial Enquiries - 01304 806039  
Other Enquiries - 01304 806039

### Publishers

MH Media Global Ltd.  
18/20 Newington Road,  
Ramsgate Kent CT12 6EE

Cover images courtesy of: Left: Waterscapes Ltd / Paul Upward Photography | Top Right: Furnitubes | Bottom Right: Kress

Every effort is made to ensure the accuracy and reliability of material published in Landscape & Urban Design however, the publishers accept no responsibility for the claims or opinions made by advertisers, manufacturers or contributors. No part of this publication may be reproduced or transmitted in any form or by any means, mechanical, electronic (including photocopying) or stored in any information retrieval system without the prior consent of the publisher.



# STRAIGHTCURVE® HELPS SUSTAINABLE GARDEN SECURE SILVER GILT MEDAL AT HAMPTON COURT FLOWER SHOW

A sustainability focused garden sponsored by F.H.Brundle and Straightcurve has been awarded a prestigious Silver Gilt medal at the Hampton Court Flower Show.

Designed by Australian gardener Melanie Hick and built by Kamil Rybak of London HardLandscapes, the garden captured the hearts of judges and visitors alike with its innovative approach to sustainable beauty.

The Climate-Forward Garden reimagines the traditional front garden for a changing world.

It draws inspiration from Australian garden design, a style that has



Taking centre-stage in the garden is F.H.Brundle's Straightcurve edging and raised beds.

Made from high-quality weathering steel, Straightcurve products are built to last, reducing waste and the need for replacements.

The modular design and pre-drilled components allow for quick and easy installation with minimal tools, minimising environmental impact.

Straightcurve's Flex and Rigid options provide both clean lines and flowing curves, catering to a variety of design needs.

They played a central role in the finished garden, as Melanie explains: "We've loved working with Straightcurve throughout the garden to make the warm embrace of a conversation pit.

adapted to harsh climate realities like droughts and heavy rain.

By showcasing techniques for reduced water use, increased use of reclaimed materials, and the creation of vital habitats, the Climate-Forward Garden demonstrates how even small spaces can become beautiful, sustainable retreats.

Steel groundscrews replace concrete for a more eco-friendly approach to securing the boundary fence.

Recycled gravel gardens create natural soakaways for heavy rainfall, while drought-tolerant plants and gravel mulch further minimise water needs.

"All the landscapers love working with Straightcurve - it gives a really neat edge and we can bend it super easily to make these undulating curves, which let us create circles and waves."

Another highlight of the show was the anticipated RHS Peat-Free Garden, created by renowned landscape firm Beaufort & Rampton in collaboration with celebrity garden designer Arit Anderson, a familiar face from Gardener's World.

This showstopper featured over 20 metres of Straightcurve Flex Garden Edging in weathered steel finish to create beautiful curved pathways, adding a touch of elegance.

F.H.Brundle Managing Director Michael Brundle comments: "Straightcurve's innovative design and sustainable ethos were a perfect fit for these two fantastic gardens.

"Both had a huge impact on the day. Congratulations to Arit and Melanie for their hard work and achievement."



**For more information, call on 01708 398048, or visit [www.fhbrundle.co.uk](http://www.fhbrundle.co.uk)**



# THE IMPORTANCE OF LANDSCAPE IRRIGATION AND EFFICIENT WATER USE

In today's increasingly unpredictable climate, efficient water management is not just a necessity; it's a critical aspect of sustainable landscape design. For businesses and public spaces, effective irrigation systems are vital in maintaining healthy, vibrant landscapes without compromising water resources. This is where the expertise of Waterscapes Ltd becomes invaluable.

Efficient irrigation is central to sustaining both aesthetics and the environment. Properly designed systems ensure that water reaches the plants' roots without wastage, fostering robust growth and reducing the need for excessive watering. By integrating advanced technology and sustainable practices, irrigation systems can be tailored to specific landscapes, accounting for factors such as soil type, plant species, and local weather conditions.

Waterscapes Ltd has been at the forefront of this approach, offering a blend of innovative and practical solutions. From the initial design phase through to installation and ongoing maintenance, Waterscapes ensures that every system is optimised for efficiency. This not only conserves water but also reduces costs associated with water usage and landscape maintenance.

In the commercial and public sectors, where large-scale landscapes are common, the role of a well-planned irrigation system cannot be overstated. Such systems must be adaptable, able to respond to changing environmental conditions, and scalable to meet future demands. Waterscapes Limited's experience in handling complex projects across diverse settings makes them a trusted partner in achieving these goals.

Moreover, with growing concerns over water scarcity, businesses and public organisations are under increasing pressure to adopt sustainable practices. Efficient irrigation systems play a pivotal role in this shift, ensuring that landscapes remain lush and inviting, even as water resources become more precious. Waterscapes Limited's commitment to sustainability is reflected in their approach, which prioritises long-term water conservation while enhancing landscape beauty.

In conclusion, the importance of landscape irrigation and efficient water use extends beyond aesthetics; it's a crucial element in the responsible stewardship of our natural resources. With expert guidance from companies like Waterscapes, businesses can achieve the perfect balance between maintaining beautiful landscapes and practising sustainable water management.



---

**Waterscapes Ltd can be contacted at:**  
[info@waterscapes.co.uk](mailto:info@waterscapes.co.uk)  
[@waterscapesltd](https://www.instagram.com/waterscapesltd)  
[waterscapes.co.uk](http://waterscapes.co.uk)  
01963 824166

**Pictures by Paul Upward Photography**



# waterscapes<sup>ltd</sup>

## **Award winning, reliable irrigation professionals**



**With over 40 years combined  
experience, producing & installing  
projects across the UK**

- Irrigation design & installation
- Full maintenance services
- Construction, local authority and private client sectors
- Display water features & fountains
- Excellent customer service & project management support

**T:** 01963 824166

**E:** [info@waterscapes.co.uk](mailto:info@waterscapes.co.uk)

**[waterscapes.co.uk](http://waterscapes.co.uk)**



**@waterscapesltd**



# TIPS FOR CREATING A LUXURIOUS GARDEN

Creating a luxurious garden not only enhances your overall property value but also offers a tranquil and secluded oasis for relaxation and enjoyment.

By carefully planning and selecting the appropriate design elements, such as luxury outdoor furniture, elegant lighting, and the right plants that complement the overall look, one can easily enhance their outdoor space.

**Here are some top tips for building the most luxurious garden.**

## Planning Your Luxurious Garden

Firstly, it is important to assess and identify any potential challenges or limitations that may arise. The layout of the garden is an essential factor to consider. The goal should be to continually enhance and build upon the garden's existing features to create a truly captivating space.

It is recommended to first map out the garden's layout, including pathways, seating areas, and focal points, as these are key spots for integrating luxury garden furniture and features. Selecting a garden theme that exudes sophistication and luxury, such as Mediterranean, contemporary, Scandinavian, or tropical, can further elevate the space.

## Key Elements of Garden Design

### Pathways and Patios

Using natural stone, marble, or premium-quality pavers not only creates beautiful pathways and patios but also ensures durability. These materials are perfect for crafting intricate winding paths that lead to key areas of your garden.

### Water Features

A water feature can add sophistication and luxury effortlessly to a garden and is

considered a must-have feature. The gentle sound of a trickling water fountain creates a tranquil atmosphere in the backyard, enhancing the garden's sensory experience with sound and movement. Whether it's a pond, fountain, or water sculpture, the luxury of a water feature can be enhanced by surrounding it with a beautiful floral bed, encapsulating the charm of the English countryside.

### Lighting

Elegant outdoor lighting is one of the simplest ways to transform a garden into a magical space. As night approaches, well-placed garden lighting can make the area both more beautiful and practical. Illuminating a Crown Pavilion luxury gazebo or garden shelter with warm, twinkling lights creates a welcoming, fun, and dreamy atmosphere. It is important to consider which areas of the garden should be highlighted





- enhancing the beauty of key features with elegant lighting and ensuring that seating areas are well-lit to enjoy them in the evening's darkest moments.

#### **Luxurious Outdoor Furniture**

To bring a touch of luxury to a garden, premium outdoor furniture made from materials like teak, wrought iron, or rattan ensures both longevity and timelessness. Adding plush cushions, cosy throws, and stylish rugs creates an inviting outdoor environment. These thoughtful touches transform the outdoor space into a chic and welcoming retreat, ideal for relaxation and entertaining.

#### **Luxury Garden Room**

The crowning jewel of any luxurious garden is a Crown Pavilions luxury garden room. This magnificent outdoor space elevates any gathering into a sophisticated affair, offering state-of-the-art amenities crafted by experts.

Enjoy al-fresco dining while admiring the stunning water features, beautifully illuminated by elegant lighting that casts a warm, inviting glow, making every meal a picturesque and memorable

occasion. Alternatively, transform the garden room into a secluded sanctuary for rest and relaxation, creating the ultimate retreat within the comfort of your home.

#### **Plant Choices for a Sophisticated Garden**

A luxurious garden starts with selecting the right plants. Exotic and rare plants, such as birds of paradise or plumeria flowers, add sophistication and charm. Incorporating a mix of seasonal flowers and aromatic plants like lavender and jasmine, alongside the glossy texture of snake plants, creates a garden that is both visually striking and sensory-rich.

#### **Complementing Your Garden Theme**

For a stylish garden, choose plants that align with your theme. Mediterranean gardens benefit from bay trees, lavender, and rosemary, whilst modern, minimalist gardens are complemented by bamboo and succulents. For a sustainable approach, native British plants like daisies, bluebells, and lilies of the valley require minimal maintenance and keep the garden lush.

#### **Trees and Shrubs**

Incorporate trees and sculpted topiaries for elegance and privacy. Evergreens like holly and pine maintain lushness, while flowering shrubs such as hydrangeas and camellias add seasonal colour. This combination ensures the garden remains opulent throughout the year.

#### **Maintaining Your Garden's Elegance**

To preserve your garden's beauty, regular upkeep is essential. Routine watering, weeding, and fertilising, along with following seasonal care guides, will help maintain its allure. For specialised tasks, professional gardeners or landscapers can ensure the garden remains in top condition, providing a luxurious retreat for years to come.



# UNLOCK THE NATURAL BEAUTY OF WOOD

Our love for wood dates back centuries when our ancestors used the material to create not only tools but also sophisticated wooden structures. This passion for wood has never gone away as we still see it being used all around us daily in everything from decking, garden furniture and garden buildings.

Osmo are wood product specialists and with over 140 years of expertise and knowledge we have developed our own natural wood finishes. Osmo knows what it comes down to in terms of wood products and finishes.

New Osmo Garden Furniture Oil is made up of a combination of sunflower oil, thistle oil, soya oil and hard waxes. These natural ingredients work in harmony with the wood bringing out the full character and emphasising its grain and colour. The product provides a satin finish which enhances the woods natural beauty.

With its clear oil-based finish it is suitable for all wood in outdoor areas. The finish is extremely water-repellent, weatherproof and UV stable. The dry finish is also safe to humans, animals, and plants.

As well as enhancing the natural look of exterior wood the Osmo Garden Furniture Oil also has many other benefits:

**High Coverage** - With just one tin of Osmo, you can achieve near to double the square meter coverage of an ordinary finishing system, saving you time and money.

**Natural Ingredients** - The foundation of Osmo wood finishes has been based upon purified and refined natural resources which are carefully harvested natural oils and hard waxes.

**No Sanding** - Forget about time consuming, tiring sanding. Osmo

natural wood finishes can easily be renovated at any time without the need for sanding.

**Microporous** - The wood remains microporous and continues to absorb and release water without damage. This means that the finish will not peel, crack, or flake unlike other traditional finishes.

With Osmo you can be confident that your exterior wood will be looking great while being fully protected. Whether you're looking to start a new project renovate old and tired surfaces, Osmo has you covered with the perfect wood care product no matter the project.

Find out more at [www.osmouk.com](http://www.osmouk.com)

Osmo, Good for Wood.

# GARDEN FURNITURE OIL

osmo<sup>®</sup>

Unlock the natural colour and beauty of exterior wood



- Improves and maintains the appearance of wood
- Suitable for both hardwoods and softwoods
- Exceptionally high coverage
- Highly water and dirt resistant
- Microporous, penetrating finish, designed not to crack, peel or flake



Highly  
Repellent



High  
Coverage



Natural  
Ingredients



Breathable

[www.osmouk.com](http://www.osmouk.com)



# CRITICAL MISTAKES FOR LANDSCAPERS & GARDENERS TO AVOID DURING PEAK SUMMER SEASON

As landscaping and gardening businesses work through their most crucial phase of the year, business experts have issued a warning of common revenue-risking mistakes to avoid.

In the last month alone in the UK, searches for landscaping and gardening services have surged by 55%, with more homeowners seeking to beautify their outdoor spaces.

Due to the seasonal nature of these businesses, it's essential for SMEs and workers in the sector to maximise profits during this time, as well as minimising any financial losses, to help cover the less profitable months of the year.

To help, the experts at money.co.uk business bank accounts have revealed some of the most common mistakes for this industry in its peak season and offered tips on how to avoid them.

## 1. Inaccurate cost estimation

Miscalculating costs can lead to significant financial losses and mean you effectively work for free or even lose money on jobs - this is particularly detrimental to seasonal businesses, where each payment is even more important.

Make sure you accurately estimate the job's duration and factor in all relevant costs, including manpower, equipment, and fuel use, as well as the removal of soil, branches, or anything else required.

It's wise to review previous jobs to help with these estimations and keep a close on your company finances with a dedicated business bank account, including budgeting for any necessary materials and equipment.

## 2. Skipping property assessments

Skipping property assessments is a significant oversight that can result in inaccurate cost estimates, a shortage of resources, missed deadlines, and potential client and revenue losses.

By having an in-depth knowledge of the property, you can understand the logistics involved with completing a job and get a clearer idea of client expectations. This will give you a better chance of satisfying and retaining the client, as well as securing more business through positive reviews.

## 3. Neglecting equipment maintenance

Due to the nature of their role, landscapers and gardeners often rely on equipment like excavators and chainsaws on a daily basis. Not maintaining these vital pieces of equipment properly can result in booking losses and, therefore, revenue.

Monitor equipment closely and complete regular maintenance to minimise the risk of tools breaking,

needing to be replaced, causing injury, or disrupting your schedule of work.

## 4. Ignoring safety protocols

Workers in this sector often wield equipment that can cause serious harm, so adhering to strict safety protocols is vital to ensuring the safety of both themselves and those around them.

Failing to do so can lead to injuries and time off work, resulting in lost jobs and revenue and perhaps even a costly legal proceeding for any liability claims related to injuries.

Ensure that all staff have adequate safety training and equipment, including helmets, gloves, and boots, and that passersby are protected with barriers and warning signs to avoid potential accidents.

## 5. Underestimating the weather

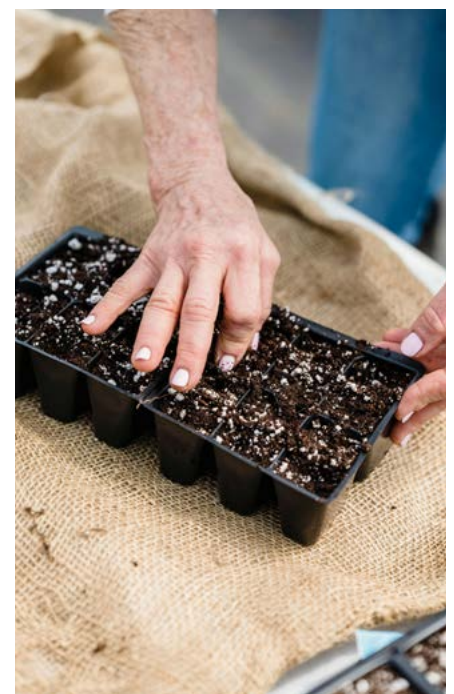
While the weather forecast is never 100% accurate, actively tracking it enables you to effectively plan your workload to avoid any periods when extreme weather will make getting the job done impossible.

It's also wise to allow slightly more time than needed for each job in case the weather delays completion. This will avoid having a knock-on effect on other jobs and causing disgruntled customers or lost sales.

Kyle Eaton, money.co.uk business bank accounts expert, comments: "Navigating a busy period as a business owner can be overwhelming at times. To capitalise on these busy spells and avoid missing out on revenue or damaging customer relations, you must proactively plan to meet the increased demand. A busier work schedule, alongside more invoices and expenses, can be hard to keep track of and opens up the risk of making a critical error which could impact your profits.

"Accurate money management and budgeting are key, to afford the additional expenses associated with a peak season for your respective industry, such as higher stock and staffing costs. You can do this by regularly reviewing your business bank account ahead of and throughout these busier months, including your cash reserves and expenses.

"By taking these tips into consideration and being proactive on the financial side of things, you can propel your business forward through this lucrative period. Even if mistakes are made, by being proactive, you can handle them effectively and learn from them to be even more successful going forward - a key part of scaling a small business."



# TREE RELOCATION: PRESERVING NATURE'S BEAUTY FOR FUTURE GENERATIONS



Since 1963, Civic Trees have been at the forefront of tree relocation throughout the UK, from importing the very first Vermeer tree spade into Europe, to designing and constructing the Newman Frame which is now used worldwide.

Civic Trees are always looking to pioneer new techniques that aid the relocation of trees.

Tree relocation is a concept that involves uprooting trees from one location and transplanting them to another. With current events surrounding environmental issues, relocating trees is even more important now than ever before. By relocating trees instead of cutting them down, we can preserve nature's beauty while also promoting sustainability.

We are proud of our reputation for efficient, cost effective and reliable tree relocation throughout the UK. You can be confident that through our exemplary commitment to staff



training and development, our work meets the highest technical and safety standards.

We believe that a tree is only as good as the way it is handled, planted and maintained. Ground preparation and aftercare are crucial to the successful establishment of the tree.

Before we start the tree move process we arrange a site visit with our client and assess the tree's health, size, and root system. We also create a site specific risk assessment to ensure the whole operation is carried out safely.

Our team of experts use specialised equipment to excavate the tree with minimal damage to its root structure. The tree is then carefully transported to its new location,

where it is replanted and nurtured to ensure its successful adaptation.

Our experienced team will know and understand the benefits and methods of loading and unloading a tree using the correct lifting techniques in order not to stress the tree or root ball. This is imperative for the longevity of the tree's life.

In conclusion, tree relocation is an environmentally friendly method that allows us to preserve nature's beauty while supporting urban growth. By carefully uprooting and relocating trees, we can maintain the valuable benefits they provide to our communities.

Civic Trees prides itself in paying great attention to the health and well being of our clients most prized asset "THE TREE".



# Supply. Plant. Relocate.



Visit: [www.civictrees.co.uk](http://www.civictrees.co.uk)  
Email: [info@civictrees.co.uk](mailto:info@civictrees.co.uk)  
Tel: 0208 950 4491





# INSTANT HEDGES & LARGE TREES ONLINE

Practicality Brown has always been an innovative company, they were the first to develop pre-grown instant hedge in the late 1990s, and have since gone on to develop the award-winning Practical Instant Hedge™. They also specialise in evergreen screening trees, bringing privacy to every garden.

They are pleased to announce two new online developments: a Hedge Shop and a full Tree Availability List.

## Hedge Shop

This is an easy way to select and buy Practical Instant Hedge™ from the Instant Hedge Specialist. Available direct at <https://shop.pracbrown.co.uk/> the Hedge Shop is also fully integrated with the existing website.



## How to Shop

Simply select the species, add to the cart and the delivery details and the price will be calculated. Delivery is a minimum of 3 metres of hedge, and usually takes two working days from receipt of order, but delivery can be later too.

As well as a delivery only option, an installation service is available, contact the Horticultural Team to ask for details.

## Tree Availability List

After completing a stock take of the trees in the Iver nursery in Buckinghamshire, there is a comprehensive list of the 800+ trees that are available to purchase right now.

## Special Offer

A 20% discount will be applied to ex VAT orders of trees worth a total of £3000 or more. The discount applies to the tree stock value of the order only, not to delivery and planting etc.

## Visit

Viewing the trees and hedges prior to purchase is recommended, simply book a nursery visit.

## Contact Us

Call the team on 01753 652022 or email [hedge@pracbrown.co.uk](mailto:hedge@pracbrown.co.uk) or [trees@pracbrown.co.uk](mailto:trees@pracbrown.co.uk) to arrange a visit, available Monday to Friday 9.00am - 3.00pm.

[Pracbrown.co.uk](http://Pracbrown.co.uk)

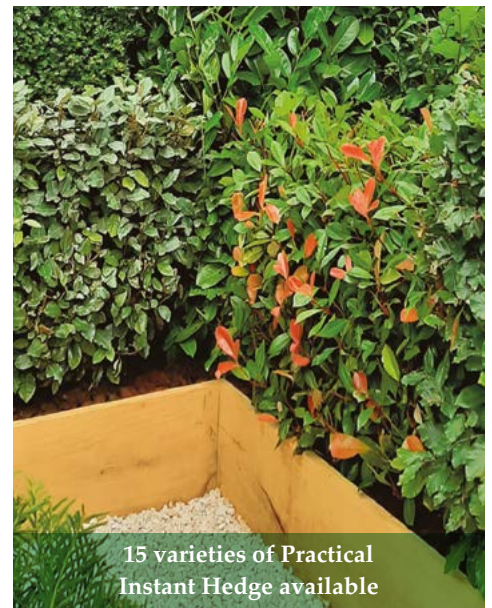




Native Mix: 1.8-2m Instant Hedge



Ligustrum japonicum (pleached)



15 varieties of Practical Instant Hedge available

# WHEN SHOULD YOU PLANT HEDGES OR TREES IN YOUR GARDEN?



Magnolia grandiflora



Photinia Red Robin



Purple Beech: Grown in 1m long pieces in hedge bags'

Traditionally, the best time to plant semi-mature stock is during the autumn/winter, whether its evergreen or deciduous. However, our hedges and trees have been carefully curated and maintained to be planted anytime of the year, even during the growing months.

Our Practical Instant Hedge™ has been produced to ensure that it is easy to handle and plant all year round, with no transplant shock. We have designed this instant hedging range to give you plenty of choice, depending on your garden style, local soil, and weather conditions. It's also ideal for use as a partition or screening to divide your garden into sections.

All of this means, any time of year is the perfect time to plant Practical Instant Hedge™.

We also specialise in screening trees, and

we currently have over 800 in stock at our nursery in Iver, Bucks. We have such trees available with a clear stem up to fence panel height of around 1.8-2m with a full bushy canopy, or pleached (trained to a narrow canopy) or fully feathered trees. These trees are containerised, meaning that they are currently growing in large pots, and are ready to plant and thrive in your garden.

Choosing a product from Practicality Brown means that you save time! We have grown and produced these large hedges and tree, so you can appreciate the mature effect from the moment its planted.

*All our hedges and trees are listed on our website. We can help you choose too, simply email us [hedge@pracbrown.co.uk](mailto:hedge@pracbrown.co.uk)*

*Book a visit or chat to our Horticultural team to find out more.*



Screening Trees



Instant Hedge



[www.pracbrown.co.uk](http://www.pracbrown.co.uk)

Contact us for details  
email [hedge@pracbrown.co.uk](mailto:hedge@pracbrown.co.uk)  
or call 01753 652022 for more information



# Innovative Hedging Solutions

*From The Suffolk Countryside*



The Elveden Estate in Suffolk has been growing edible and ornamental crops for over two hundred years. This family run organisation is renowned for its wildlife conservation practices and has a loyal following of customers for its Christmas tree enterprise, its farm shop and its instant hedging.

Elveden Instant Hedging was developed during the 1990's to satisfy the demand for pre-grown hedging in the construction and landscaping industries. Growing and harvesting methods are constantly being refined as the company nears its target of becoming carbon neutral.

Elveden Hedging has seen a massive upsurge in interest over recent years as householders demand their landscapers deliver instantly useable gardens. Garden designers are, quite rightly, guiding their clients towards biodiverse and carbon-friendly gardens. Which means specifying products such as instant hedging which satisfy the client's need for speedy establishment with excellent environmental credentials.

Natural hedges play a large part in supporting biodiversity and with Elveden's instant hedge, designers, clients and landscapers can have the best of all worlds. Speedy installation at any time of year, immediate visual appeal, effective privacy screening from day one and truly amazing wildlife appeal are just some of the benefits of this innovative product.

**The Elveden Instant Hedge is a fully knitted, mature hedging product with a distinct difference. Unlike other hedging, the Elveden Instant Hedge has a uniquely developed root system allowing hedges to be lifted, transported and transplanted at any time of the year without the risk of root shock.**

Garden designers and landscapers can choose between seventeen single species of hedgerow and one mixed, each of which differs in benefits, seasonal interest and suitability for sites, situations and soil types. Additionally, the team at Elveden offers a contract growing service for customers with specific needs in terms of species, size, shape, or order volume.

## It's Not Just The Hedging That Matters At Elveden

Kevin Harden, Commercial Manager at Elveden Hedging is fully aware that discerning buyers require more than just beautiful products. Along with environmental awareness, service lies at the heart of Elveden's success. "Each and every member of the team here at Elveden is dedicated to delivering an exceptional user experience." Says Kevin.

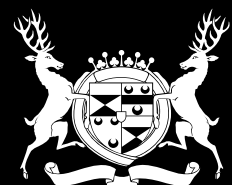
"From the nursery technicians who plant and nurture the hedges to our incredible transport team, everyone understands that each customer deserves a top class product and a fully responsive service."

"We understand that the decision making process involves a lot of research and that the end user may need to take their time when specifying such an important part of their garden. At Elveden we welcome visitors by appointment and are always happy to show designers, landscapers and householders around the nursery so that they can see for themselves that Elveden Hedges exceed expectations."

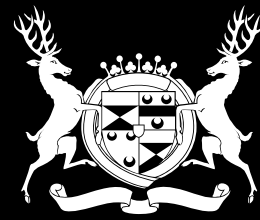
Kevin and the team at Elveden welcome enquiries for commercial and domestic hedging projects. To discuss your requirements call: 01842 890423 or email: [hedges@elveden.com](mailto:hedges@elveden.com)



[www.elvedenhedges.com](http://www.elvedenhedges.com)

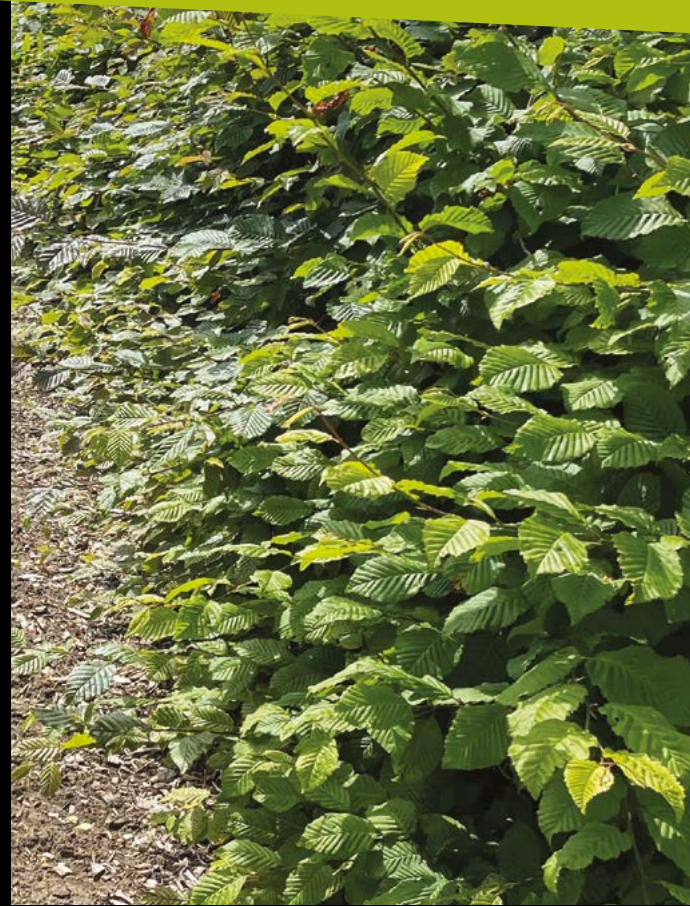


**ELVEDEN**  
INSTANT HEDGE



**ELVEDEN**  
INSTANT HEDGE

*A unique fully formed hedge,  
sold by the linear metre*



*17 varieties and mixes*  
**Contract growing service available**

*<< Request our 2024 brochure today  
to find out how Elveden is supplying  
landscapers around the UK – not only  
with a wide range of hedging solutions,  
but also invaluable guidance & advice.*

Telephone: 01842 890423  
Email: [hedges@elveden.com](mailto:hedges@elveden.com)



[www.elvedenhedges.com](http://www.elvedenhedges.com)





# ARE YOU SITTING COMFORTABLY?

## ELEVATE YOUR OUTDOOR SPACE WITH LIFESTYLEGARDEN®

A dedicated space for alfresco dining, working and relaxing, which seamlessly merges with the indoor living environment is the lifestyle of choice for contemporary consumers and traditionalists alike. Arbiters of the ultimate aspirational lifestyle agree about the value of bringing the comfort of your living room into the great outdoors, where the right choice of furniture is just as crucial as it is inside the home when it comes to achieving the desired look.

This is where the outdoor furniture specialists at LifestyleGarden come into their own, with a series of breathtaking collections which run the gamut from chic bistro sets that are worthy of a Parisian tête-à-tête, indulgent poolside loungers that evoke Mediterranean villas and elegant dining tables that will

elevate your English country garden into a staycation paradise.

Pictured above is the beautiful Bahamas Corner Set, whose warm tones and smooth lines blend luxury with simplicity and the practical requirements of outdoor living with the ultimate in comfort and elegance. Created from LifestyleGarden's specially formulated, durable Petan® wicker with an FSC™ teak base and Olefin® premium fabric.

*Bahamas Chaise Lounge set RRP: £1479*

### Creating the best environment

Thanks to its joyful colour palette and impeccable environmental credentials, Nassau is one of the most accessible collections in the LifestyleGarden portfolio is also one

of the most coveted, as evidenced by its prime position in both the restaurant and shopping areas of the Eden Project in Cornwall. Created from recycled ocean plastics (DuraOcean®) and Social Plastic® materials, Nassau is the furniture of choice for socially conscious consumers and taste-makers alike.

This flagship collection includes chairs, dining tables, coffee tables, bistro and dining sets in a delightful array of colours from seaweed, sage and mint green through to honey yellow, peony pink and coral sand white. 100% FSC certified eucalyptus pieces and robust but lightweight aluminium complete the Nassau aesthetic that is as durable as it is stylish.

*Set of two Nassau chairs: RRP £199*



### Tête-à-tête bistro sets

If you love nothing more than an intimate meal on the balcony with your spouse, friend or lover, these charming Onyx chairs offer the perfect seating for food in good

company, surely one of life's great pleasures! This fresh take on the classic bistro chair - also created from recycled Social Plastic® - combines minimalist design with pleasingly fluid lines.

### LifestyleGarden® has it covered

When it comes to outdoor living in the UK, where we are the mercy of the weather for 12 months of the year, pergolas offer much needed protection against the elements and will help form the basis of comfortable garden rooms. These stylish structures also offer the perfect framework for decorative accessories such as fairy lights, hanging lanterns, bunting and drapes.

For lovers of plants, the shelter afforded by a pergola will come in handy, protecting more delicate blooms from the worst of the elements and providing both a trellis structure for climbing plants and a backdrop for trailing foliage and hanging baskets. See your pergola as the framework for the living work of art that will become your garden room and let your creative spirit soar. The same protective shelter means you can array the zone beneath with fabric hangings, soft furnishings and even shelves with books for a bohemian outdoor chillout zone and entertaining space. *See the LifestyleGarden® collection of pergolas*



For more information and to order online visit: [lifestylegarden.co.uk](https://lifestylegarden.co.uk)

**THE TERRACOTTA POT COMPANY**

The Terracotta Pot Company are recognised experts in the importation and sales of the finest hand-thrown Cretan terracotta pots. For over 20 years we have been working with the same family of potters in Crete and probably have the largest selection and stock available in the UK. Each pot, however big, is hand-thrown by Greek master craftsmen and not mass produced in a factory ensuring the best quality.

We offer styles and sizes to suit all tastes, applications and price ranges - all supplied with our 50-year frost proof guarantee down to a temperature of minus 20°C - therefore ensuring the long life of these future antiques.



Email us on [sales@theterracottapotcompany.co.uk](mailto:sales@theterracottapotcompany.co.uk) for our latest Trade Prices.



**SPRING REACH NURSERY**



For all your Autumn planting projects and beyond why not give Spring Reach Nursery a try. Based in Surrey with over 25 years growing experience supplying leading garden designers and domestic landscapers you can expect a top quality service from initial enquiry through to delivery to site or collection. We have a superb choice of hardy nursery stock including some varieties that are not freely available.

- Always holding good stocks of those ever popular lines for immediate impact from large evergreen screening trees pleached panelled trees and multi-stems and specimen shrubs for immediate impact
- Thousands of Herbaceous perennials, Roses and Grasses for giving your design the wow factor in Summer and Autumn
- Conveniently situated just 10 Minutes from Junction 10 of the M25
- Deliveries made using own transport up to 150 miles or further a field by the pallet network.

Contact 01483 284769 | email [info@springreachnursery.co.uk](mailto:info@springreachnursery.co.uk)  
Long Reach Ockham Surrey GU23 6PG

[www.springreachnursery.co.uk](http://www.springreachnursery.co.uk)



Rockways provide the ideal solution for your garden water feature needs as well as 3D backgrounds for aquariums and vivariums



**New for 2024**

- Stainless/Corten Steel and polished concrete modern square water features. Bespoke facility available.
- Lightweight Artificial Rocks
- Resin and Concrete pond cascades



[www.rockwayswaterfeatures.co.uk](http://www.rockwayswaterfeatures.co.uk)  
Email: [info@rockways.co.uk](mailto:info@rockways.co.uk) | Tel: 01376 514345



**Wholesale - Bareroot - Growers**

Quality Grown Plants, Shrubs and Trees Grown For Trade

- Roses • Ornamental Trees • Malus
- Fruit Trees • Landscaping Trees • Birch
- Soft Fruit • Acers - Maple • Salix • Hedging
- Crataegus • Sorbus • Conifers
- Cotoneaster • Prunus



**Bareroot Wholesale Nursery  
Stock British Grown in Norfolk**

Tel: 01945 465547  
Email: [poplarnurseries@tiscali.co.uk](mailto:poplarnurseries@tiscali.co.uk)  
[www.poplarnurseriesltd.co.uk](http://www.poplarnurseriesltd.co.uk)

## DELIVERING RELIABLE HEDGING



Fully mature, ready to plant hedges, perfectly knitted together to give your garden an instant transformation. There are so many types to choose from including individual plants, low and high panels and even screens.

Ordering from Readyhedge is as easy as...

1. Choose your hedge variety
2. Select the height you desire
3. Measure the required distance in metres



You need 1 bag or trough for every metre measured, it really is that simple!

Create the perfect frame for any garden with our choice of over 35 varieties of hedges. You can find a hedge to accommodate any UK climate and soil type. If you're .

Our aim is to fulfil orders in 48 hours, we offer secure and punctual delivery to any location within the country.

**For more information contact Readyhedge on 01386 750585 or visit [www.readyhedge.co.uk](http://www.readyhedge.co.uk)**

**Follow us on Social Media:**

**Facebook @Readyhedge**  
**Twitter @Readyhedge**  
**Instagram @readyhedge**



**GROWN IN THE  
 UK SINCE 2003**  
 FROM THE HOME OF  
 INSTANT HEDGING



# READYHEDGE

Readyhedge hedging plants, like the mixed native hedging shown here, are container-grown in the UK and fully acclimatised to UK conditions. With over 20 years' experience, Readyhedge delivers hedging to rely on, wherever you are.

**01386 750 585**

**[info@readyhedge.com](mailto:info@readyhedge.com)**

**[readyhedge.com](http://readyhedge.com)**

# POWDERLUX<sup>®</sup>

## INSTANTLY DELIVERS THE APPEARANCE OF WEATHER-BURNISHED METAL



PowderLUX Pastel on balcony

Powdertech Corby, leading architectural powder coater, specialises in offering finishes that are very different to run-of-the-mill RAL colours and are applied in a manner particular to Powdertech, creating unique patterns and textures. Following the ongoing success of Powdertech's 'Evolution/ Aged Metal' range the company has followed up with its latest range - PowderLUX<sup>®</sup>

### Transforming landscape architecture

PowderLUX<sup>®</sup> celebrates the beauty of aged-metal with a glorious silk-smooth matt finish. Unique to Powdertech, the finishes deliver outdoor super-durability, replicating patinas ranging from aged copper, rust, blued steel, tarnished bronze to glazed terracotta.

PowderLUX<sup>®</sup> is highly suitable for all landscape architecture including

balconies, street furniture, signage, metal sculptures and planters. Corrosion and UV resistance meet high performance standards and the finish does not leach on to surrounding material after rainfall.

### Restoring an antique feature

A recent PowderLUX application was for the renovation of an original balcony on an Edwardian property.



PowderLUX Autumn Rust

The balcony was constructed from cast iron but the balcony top rail and the base were remade in steel. These new components needed to be joined to the original infill pieces, and given an homogeneous aged appearance across the entire structure. The product's flexibility and application technique ensure that the different metal substrates, such as cast iron and steel, will be indistinguishable once the finish is applied.

Powdertech removed the old paint on the cast iron sections and used a primer to provide a smooth finish and reduce the porosity of the old metal. This would ensure that the PowderLUX finish applied on the years'-old cast iron would look the same as that applied to the brand-new steel. The shade selected was PowderLUX<sup>®</sup> 'Pastel' echoing the pale verdigris and pink shades of weathered copper. Powdertech created a 'PowderLUX Pastel' to meet their client's vision.

Through imaginative specification and use of Powdertech coatings such as PowderLUX, a reduction in consumption of copper, lead, zinc, brass and bronze can be made, without compromise in appearance. In many cases reduction in cost will occur and certainly sustainability is improved. through use of highly abundant and recyclable aluminium and steel. The finishes are easy to clean and at 'end of life', powder coating does not affect the recyclability of metals.

+44 1536 400890

[www.powdertechcorby.co.uk](http://www.powdertechcorby.co.uk)  
Richard.b@powdertechcorby.co.uk



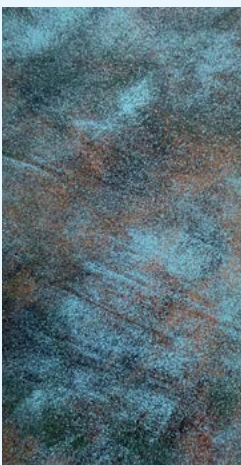
# PowderLUX<sup>®</sup> patina

*Ageing without the waiting*



Unique to Powdertech, PowderLux<sup>®</sup> celebrates the beauty of aged-metal with a glorious silk-smooth matt finish.

**Discover PowderLUX<sup>®</sup>**  
Contact: Richard Besant,  
Richard.b@powdertechcorby.co.uk



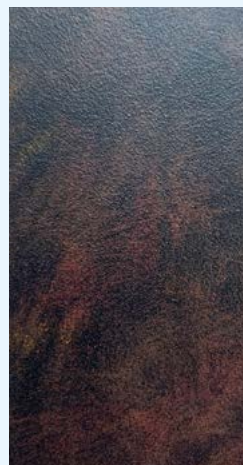
Sea Foam



Tarnished Bronze



Urban Steel



Autumn Rust



Pastel

# ENJOY THE SUMMER EVENINGS FOR LONGER THIS YEAR WITH OUR RANGE OF FIRE LANTERNS AND GARDEN FURNITURE!



Here at Ruma we have a range of products ready to help you enjoy your garden into the evenings. From table top Fire Lanterns and Fire Pits, to gorgeous Bistro and Dining Sets and heated cushions!

Our Cosi Fire Lanterns are perfect for enjoying the evenings outside with friends, super stylish and easy to use.

If your in need of more heat, our Fire Pits and Fire Pit Tables will be the talking point of social gatherings. Available in many styles and colours.

Check out our range of Seating and Bistro Sets for relaxing and dining.

All of our Fire Lanterns, Pits and Tables can be used well into the Autumn/Winter season and are easy to store and cover until next year!



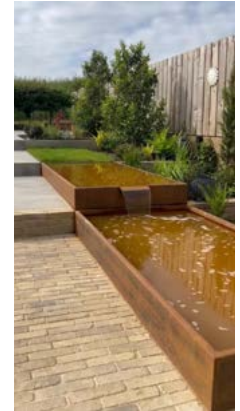
## EXCEPTIONAL PRODUCTS | EXCEPTIONAL SERVICE | BESPOKE FABRICATION

Lux Unique design and manufacture bespoke high quality steel garden products in the UK.

The team behind Lux Unique are family and fabricate all their own products in Cheshire. They have a wealth of state-of-the-art machinery and expertise at their disposal and are very experienced in all aspects of steel fabrication and design. Over the last few years, the company has grown to support many garden designers and clients in creating bespoke pieces for their outside spaces which are beautifully designed and will stand the test of time.

The popularity of Cor-ten steel known for its exceptional strength, longevity and zero maintenance has seen this material become the product of choice for so many landscapers and garden designers. Lux Unique offer a minimum thickness of 3mm on all Cor-ten products because to offer a thinner material would simply compromise on the quality and strength of the product, something many of their competitors do.

The company also offers steels products in powder coated and galvanised finishes.



The in-house design team, technical engineers and fabricators mean that Lux Unique have total control over the design and manufacturing process from inception to completion and can work with clients to create truly bespoke, high quality crafted pieces.

The team has created many bespoke pieces for clients including planters, raised beds, water features, ponds, steps, and garden edging, working with designers on all the technical aspects of

their ideas to come up with solutions to suit the space and budget.

Its commitment to high standards has placed Lux Unique at the forefront of bespoke fabrication for the garden industry, bringing superior quality UK made products to the market and offering a personal one-to-one service for all its clients.

**T: 03333 66 11 30**

**Email: [hello@luxunique.co.uk](mailto:hello@luxunique.co.uk)**

**W: [www.luxunique.co.uk](http://www.luxunique.co.uk)**

# LUX UNIQUE

Bespoke Steel Garden Products

[www.luxunique.co.uk](http://www.luxunique.co.uk)  
[hello@luxunique.co.uk](mailto:hello@luxunique.co.uk)  
 (t) 033 33 66 11 30

**Planters | Ponds | Edging | Raised Beds**



# BIRKDALE LAUNCHES NEW LIGHT GREY URBAN SLATTED PANEL

Birkdale, the UK's leading fencing and gate accessories manufacturer, has added a new colour to its DuraPost® URBAN Slatted Composite Panel range. Developed in response to customer demand - the new Light Grey Panel offers a contemporary fencing solution that mimics the appearance of timber without any of the maintenance requirements.

Already available in Natural, Charcoal and Brown, the new Light Grey DuraPost® URBAN Slatted Panel consists of six composite boards and two horizontal u-shaped rails at the top and base of the panel. The boards are manufactured using 60 to 70% recycled materials including a combination of HDPE (high-density polyethylene) and rice husks - a natural bi-product

from the rice industry. This stable material will not warp or degrade over time, unlike timber, and it does not need to be painted or treated.

Furthermore, the panels have been tested to EN 1794-1-2018 and, to maximise longevity, the rails are made from galvanised steel - a strong, light and highly durable material - which is then nano-coated and powder coated for ultimate weather protection. As a result, Birkdale can guarantee its DuraPost® URBAN Slatted Panels for up to 15 years.

What's more, the versatile panels can be used either horizontally or vertically. When paired with DuraPost® steel fence posts, a striking and contemporary solution can be achieved that will continue

to look good long after traditional timber and concrete fencing systems have degraded.

John Abernethie, CEO at Birkdale, commented: "We are delighted to expand our stylish DuraPost® URBAN Slatted Panel range to provide even greater design flexibility. We highly value customer feedback and are always looking to improve and evolve our fencing range to ensure that we offer everything required to build a long-lasting and aesthetically pleasing fencing solution."

---

**To learn more about the URBAN Slatted Panel and the wider DuraPost® range, please visit: [www.birkdalesales.com](http://www.birkdalesales.com)**

# INTRODUCING AMBEROL'S NEW LIVING WALL – THE AMBERWALL

Amberol has recently launched their new Amberwall range, a stylish yet low maintenance living wall designed to create vibrant ecosystems where space is a premium.



Amberwall connects people with nature, which can in turn improve air quality and encourage passersby to linger in their surrounds.

### Transforming public spaces

Amberwall is an ideal backdrop for places with a high footfall - think shopping centres, hotels, museums, or universities. For brands looking to strengthen their trending, Amberwall can be built as a living 'selfie wall', incorporating an eye-catching floral display with a hashtag, logo, or slogan.

Designed and manufactured in the UK, the Amberwall can be made from up to 100% recycled\* materials and is available in a range of standard colours. Amberol also has the facility to match\* colours precisely to reinforce a brand's image.

### How does the self-watering system work?

Amberwall incorporates Amberol's unique Aquafeed™ Self-Watering System. Each interlocking reservoir comes with an easily accessible top

filling water port and linked units. Once the top unit is full, the water will cascade down into the lower units, filling as it goes.

The effect of this feature is that users only need to water the units once or twice a week for plants to stay healthy - saving time, money, and water in the long run.

### Want to see Amberwall in person?

**Amberol will be exhibiting at the following events in 2024:**

**Four Oaks Trade Show | 3rd - 4th September | Stand E161**

**Groundsfest | 10th - 11th September | Stand L36**

**Britain in Bloom Award Ceremonies | Various; check website for full details.**

**Public Spaces Expo | 15th - 18th October | Stand P42**

**For more information, call 01773 830 930 or email [sales@amberol.co.uk](mailto:sales@amberol.co.uk)**

*\*Subject to availability and MOQs*



Sustainable street planters, benches, and bins to create environmentally friendly spaces.

For more information on Amberol's products call 01773 830 930 email [sales@amberol.co.uk](mailto:sales@amberol.co.uk)

[www.amberol.co.uk](http://www.amberol.co.uk)

/AmberolUK

@amberolUK

Planter Enhancement range



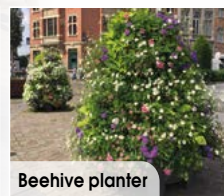
Amberwall range



Giant precinct planter



Olympic dual bin



Beehive planter



Moulded back bench



Penguin bin



Stone trough



# REINVENT YOUR OUTDOOR SPACE

**Turn neglected weedy patches into stylish, statement areas with UltraScape's brand new product range. Comprising of bedding, priming and jointing, this range of products are set to revolutionise all future domestic landscaping works.**

Ever since the pandemic, there has been a huge upturn in homeowners investing in their gardens. Even with lockdown firmly in the rear-view mirror, we have continued to take pride in our outdoor spaces turning them into beautiful areas to host friends and family.

You can't build a great building on a weak foundation and the same is true about laying new paving. Create a solid foundation so future generations can enjoy your hard work by using UltraScape prebedded mortar and prem-prime slurry primer on your next project.

Designed for bases commonly found in domestic gardens, prebedded mortar and prem-prime slurry primer are incredibly easy to mix and apply and require minimal tools to install.

With the paving laid, choosing the perfect finish is fundamental for the style and integrity of your paving installation. With three jointing solutions available, there is a grout perfectly suited to all types of stone, tastes and aesthetics. UltraScape prejoint is an all-weather brush-in sand available in four stunning colours to match popular stone options. Porcelain paving continues to dominate popular landscaping trends. Leave homeowners in awe of your work by choosing UltraScape porcelpoint flowable grout for your next porcelain job. Completing the range is flowpoint fine - a flowable grout that has been transforming

landscapes for over 25 years. With just a neoprene squeegee or broom needed to install prejoint, porcelpoint and flowpoint fine, UltraScape's jointing solutions make light work of grouting pavers but are guaranteed to result in a dramatic transformation.

So, if you're working on improvements to a garden, UltraScape's new product range is the perfect way to do it. With a wide range of different styles and applications at your disposal, the world's your oyster when it comes to outdoor spaces.

---

**To find out more please visit [ultrascape.co.uk](https://ultrascape.co.uk). For pricing enquiries, stockist information, or to place an order, please contact UltraScape's team of paving experts by emailing [ultrascape@instarmac.co.uk](mailto:ultrascape@instarmac.co.uk) or calling +44 (0) 1827 254402**



# Coming to a garden near you

Turn neglected weedy patches into stylish, statement areas with UltraScape's brand new product range. With a wide range of different styles and applications at your disposal, the world's your oyster when it comes to outdoor spaces.

## NEW TO THE RANGE

### PorcelPoint

Pointing perfection for porcelain



SET TIME:  
15 MINUTES



OPEN TO FOOT  
TRAFFIC: 1 HOUR



JOINT WIDTHS:  
2-50MM



AVAILABLE IN  
STONE GREY &  
LIMESTONE



### PremBed Mortar

Fibre modified bedding mortar



EASY TO  
USE



LIGHT FOOT  
TRAFFIC: 12 HOURS



DEPTH:  
30-100MM



SUITABLE FOR  
PORCELAIN AND  
NATURAL STONE

## REVOLUTIONISING LIGHTING MANAGEMENT

Introducing the UK's leading wirelessly controlled box, the New Wise Direct Box, which revolutionises lighting management with a range of advanced features designed for ultimate convenience and control. This cutting-edge innovation builds on its existing wireless switching capabilities by integrating seamlessly with the Wise Direct app, allowing users to effortlessly program and regulate their lighting from anywhere. Through the app, you can directly control your Wise Box using your smartphone, offering real-time monitoring of your lights' status and providing a user-friendly interface for setting customised time delays, timers, and even configurations for dusk and dawn settings. This means you can ensure your garden lighting is perfectly timed and responsive to natural light changes, enhancing both functionality and ambiance. The New Wise Box empowers you to optimise your lighting with unprecedented ease, offering a sophisticated solution that adapts to your lifestyle and preferences.

Embrace the future of smart lighting with the New Wise Direct Box and enjoy unparalleled convenience, efficiency, and control over your garden's illumination.

[www.wisecontrols.com](http://www.wisecontrols.com)  
[info@wisecontrols.com](mailto:info@wisecontrols.com)  
 020 8874 2234



**Control your Garden lighting, without the need for a Wi-Fi hub, with New Wise Direct Boxes**



Simple set-up using app



Dusk till dawn Timer



Preset Time-lag function



No Wifi router required



No programming required



Instant feedback



[info@wisecontrols.com](mailto:info@wisecontrols.com)  
[www.wisecontrols.com](http://www.wisecontrols.com)



## Looking for a sustainable mulch for your next garden project?

Apsley Farms' soil improving mulch is packed with essential NPK nutrients. Acts as effective insulation to protect soil from frost and heat, suppresses weeds and repels slugs and snails whilst improving soil structure and health. Free from peat and waste. Creates added visual appeal to borders and beds. A 100% sustainable by-product of green energy at Apsley Farms.



Delivered in 730L bags or loose loads



**01264 554433**  
 Nationwide delivery  
[www.apsleyfarms.com](http://www.apsleyfarms.com)



## RECOGNISING EXCELLENCE THROUGH ACCREDITATION

Have you ever wondered if there are quality standards around timber decking and cladding products or services? Do you need technical advice or simply design inspiration? Look no further than the Timber Decking and Cladding Association (TDCA). We're here to raise the bar on all things decking and cladding. Whether you're a landscaper, architect, specifier, contractor or DIY enthusiast, we can help. We have industry experience, a library of free resources and a growing member supplier list with independent third-party verification.

To get a job done right first time, using fit-for-purpose materials with correct standards of installation is essential. But whatever the market, it's often difficult for a buyer to distinguish good from bad quality, whether it be a specialised deck fixing or a reputable cladding installer - especially when searching online. Price point isn't always an indicator of reliability.

Step in DeckMark and CladMark. TDCA accreditation schemes which recognise manufacturers, suppliers and installers who work to the highest standards in their fields. From wood coating manufacturers to deck design engineers, simply search our database to pinpoint specific suppliers. Or get in touch - TDCA offers a sourcing service, just give us your project details and we'll find the right supplier for you.

TDCA is a not-for-profit company and the money generated from membership fees and inspection services goes towards its work to raise awareness of fit-for-purpose materials and installation good practice.

Visit [www.tdca.org.uk](http://www.tdca.org.uk) to learn more or call 01977 558147.



The Decking and Cladding Handbooks are produced in partnership with Timber Development UK and are free to download from our website.



Sourcing for your next decking project?

## Look for the Mark



**Find third-party verified and fit-for-purpose products and installers**

From deck components and design engineers to wood coating solutions and specialised fixings.



DeckMark schemes require a full business audit and assessment followed by annual surveillance audits by TDCA.

The Timber Decking & Cladding Association is an independent, not-for-profit technical and advisory trade body. Recognised as the authoritative source of expert opinion in the UK.

**Get in touch and find a supplier today**

[info@tdca.org.uk](mailto:info@tdca.org.uk) | 01977 558147

[www.tdca.org.uk](http://www.tdca.org.uk)



# COMPOSITE TO TRANSFORM THE FUTURE OF STREET FURNITURE

The use of wood polymer composite (WPC) in the creation of street furniture is gaining traction, as more companies become aware of the many benefits this multifunctional material can offer. From longevity and low maintenance to strength and style, WPC is proving the perfect alternative to traditional timber and plastic.

Phil Marris, Managing Director of Ecodek, a UK-based manufacturer of wood composite solutions, further explores the role of WPC and how it is transforming the future of street furniture:

“Wood Polymer Composite is a combination of materials. Here at Ecodek, our composite boards are made from sustainably-sourced wood fibres and recycled plastics.

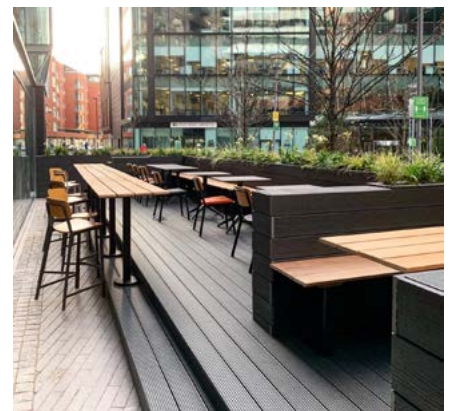
These materials are heated together with bonding agents, formed into boards, and then cooled. Historically used for decking boards, balustrades, and subframes, WPC is now being utilised with great success in street furniture.

“From benches and tables to bins and planters, wherever wood or plastic has been traditionally used, WPC is beginning to take its place.”

### Wood Polymer Composite Advantages

“Composite is specifically designed to be long lasting. Its durability and longevity, which is usually supported by lengthy warranties, make it a sound financial investment, particularly compared to timber alternatives, which often have a shorter lifespan.

“Composite requires minimal maintenance. Unlike wood, which needs regular treatments to protect it from the elements and keep it safe for users, composite only needs an occasional clean with water to keep it looking like new. It’s also splinter and split resistant, which makes it extremely user-friendly.





"However, a key USP of WPC is its sustainability credentials. Whilst timber may appear to be the most environmentally friendly choice, it takes a long time to replenish stocks. Meanwhile, many street furniture manufacturers continue to rely on virgin plastics as their primary raw material, which is also not the most sustainable option.

"Conversely, WPC is both recycled and recyclable. At Ecodek, approximately 60% of our material is sustainably-sourced and PEFC certified wood fibre and 35% is

recycled HDPE polymer (recycled plastic milk bottles). We also offer a waste buy-back scheme where installers can be paid to return their off-cuts that we then grind down and put it back into our manufacturing process.

"Combined, these qualities offer a cost-effective street furniture solution, whilst providing the public with sustainable, safe, high-quality facilities."

### Customer-Centric Innovations

"At Ecodek, we're increasingly partnering with manufacturers who use our WPC profiles to construct street furniture. Our customers utilise both our standard 'off-the-shelf' profiles, originally designed for deck boards and sub-frames, and our custom-made profiles to produce specific shapes. Our WPC lumber has been used to manufacture products including bus shelter benches, outdoor restaurant tables, and wayfinding signage, to name a few.

"We work closely with our customers to ensure we deliver the best OEM solution for them. We discuss their needs, what material they are currently using, and then determine



if a current profile will fit, or if a new profile is required. If the latter is the case, we guide our customers through the entire process, from conception through to finished product."

### Made in Britain

"As the only UK manufacturer of wood polymer composite, we have the benefit of offering our customers a unique service. They have access to our dedicated technical and production teams throughout the design and manufacturing processes, who provide ongoing support to ensure the finished product meets every criterion. In addition, our lead times are significantly reduced, enabling us to deliver on time, every time. Being a UK manufacturer also supports our environmental commitments, as our products have less distance to travel, reducing our reliance on international transportation and lowering our carbon footprint.

"We believe the popularity of WPC will continue to grow as more companies recognise the many benefits it can offer. Its environmental credentials, ease of maintenance, durability, and stylish looks will increase its popularity as the go-to choice for many customers."

### Case study

#### Bus shelter seating by Shelter Solutions

**Product:** Supastiff Support Beams

**Client:** Shelter Solutions

**Location:** Ellesmere Port

Shelter Solutions, renowned for its expertise in shelters and canopies, was commissioned to design and supply several bus shelters in Ellesmere Port. Among the project's requirements was durable bench seating.

Having previously worked with Ecodek on several projects, Shelter Solutions knew that the company was well placed to support this latest scheme.

Together they agreed that Ecodek's Supastiff Support Beams would make the ideal material choice for the benches - being environmentally-friendly, solid, low maintenance, and extremely durable.

Working alongside Shelter Solutions, Ecodek created the perfect profile for the shelter seating.

"As expected, due to our previous experience with Ecodek, our product was delivered efficiently and in perfect condition. We would like to thank Ecodek and their staff for helping us deliver a quality product which has only received positive feedback from our client and the public. We look forward to working with Ecodek again in the future!" Robert Leghorn, Project Manager at Shelter Solutions



**For further information about Ecodek and its street furniture offering, call 01978 667 840 or visit [ecodek.co.uk/commercial-decking/composite-wood-lumber/](https://www.ecodek.co.uk/commercial-decking/composite-wood-lumber/)**



# CASE STUDY: LUXURY OUTDOOR SPACES WITH TREKKER AT ARMATHWAITE HALL

Nestled in the stunning Lake District, a stone's throw from the calming waters of Bassenthwaite Lake and overlooked by the dramatic Skiddaw Mountain, Armathwaite Hall Hotel is the perfect location for a luxurious getaway.

With outstanding views of the countryside and set within 400 acres of deer park, this stunning hotel was looking to create a luxurious and relaxing space for its guests to take in the surroundings.

In May 2023, the multi-award winning Armathwaite Hall Hotel & Spa unveiled the completion of its £1.5

million investment into its luxury offering and Trekker was delighted to have its decking products specified as part of the project for the balconies and terrace areas.

Set in close proximity to the main house and boasting a substantial floor footage spanning an impressive 40-50sqm, the new Spa Garden Suites offer seamless access to the hotel's award-winning spa facilities. Guests can immerse themselves in an oasis of tranquillity as each suite integrates with the lush, verdant landscape just beyond its doors and accessible via a private patio.

With luxury and tranquillity at the heart of this regeneration project, it was important that this was reflected in the decking areas. The client decided that the Trekker Anthracite Woodgrain Composite Decking would be the perfect fit for the luxurious yet traditional feel of the rooms. With an area of 214m<sup>2</sup> to cover, this product provides not only a dramatic visual uplift but is easier to maintain than timber alternatives and is more hard wearing in a potentially highly trafficked area.

This decision wasn't just based on style, the practicality of the products used was equally important. With anti-slip properties, the Anthracite Woodgrain is an ideal choice for hotels and hospitality where the safety of guests is paramount - meaning the area can now be enjoyed all year round.

The design of the Spa Garden Suites takes inspiration from the hotel's natural environment and the Trekker woodgrain decking fits perfectly with its raw, natural, timber-inspired look and feel.



To find out more about how Trekker can enhance your next project, visit [www.trekkerglobal.com](http://www.trekkerglobal.com) 01483 310 800 [info@trekkerglobal.com](mailto:info@trekkerglobal.com)



Up to  
**25 year  
warranty**

# Introducing Endura:

Your Ultimate Decking & Cladding Solution

Crafted from natural timber and 100% recyclable, enjoy peace of mind with up to 25 year warranty. Splinter-free, slip-resistant, and incredibly durable, it's the perfect choice for both domestic commercial projects.

**Explore the range today!**

**TREKKER**  
LUXURY DECKING & CLADDING

T. +44(0)1483 310800

[www.trekkerglobal.com](http://www.trekkerglobal.com)



# GLEE CELEBRATES 50 YEARS WITH EXCITING SHOW FEATURES AND SEMINAR SESSIONS

Glee 2024 is set to open its doors from 10th - 12th September at the NEC in Birmingham, marking a significant milestone as we celebrate its 50th anniversary. With over 400 exhibitors showcasing the latest products in garden retail, this year's show is packed with activities to provide you with an unforgettable experience.

The event begins on Tuesday, 10th September, with celebrations including the Talent Store Awards for emerging retailers in visual merchandising, the New Product Awards, recognising top products in sustainability and innovation.

New this year is the Glee Hero Award, honouring those who shaped the industry over the past five decades.

The first day ends with the Glee Anniversary Party, sponsored by Shark Ninja, where attendees can network, enjoy cooking demos, and celebrate Glee's 50th anniversary with live music and refreshments outside Hall 10.

On Wednesday 10th and Thursday 11th September, the Glee Stage will host a variety of live seminar sessions, covering topics such as online marketing for

garden retailers, effective plant merchandising, and the integration of technology in gardening. This year's speaker line-up includes experts from eBay, Swanky, HTA, and many more.

With a full schedule of events and features, Glee's anniversary event offers an excellent opportunity for garden retail professionals to discover new products, gain valuable industry insights, and nurture relationships.

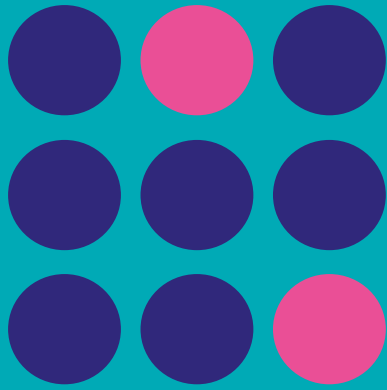
---

Secure your place now at:  
[www.gleebirmingham.com/landud](http://www.gleebirmingham.com/landud)

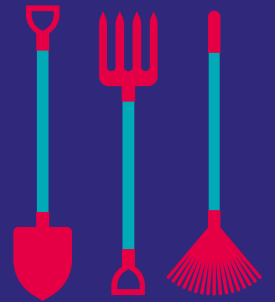
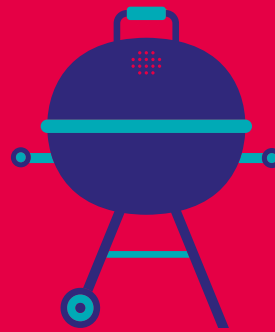
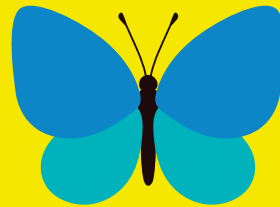
Save the date

# glee 2024

10-12 SEPTEMBER  
NEC BIRMINGHAM



FIFTY YEAR  
ANNIVERSARY



Discover the garden retail event that's innovating the industry.

Scan to register



In partnership with: **LANDSCAPE &  
URBAN DESIGN**



# GROUNDSFEST 2024: THE MUST-ATTEND EVENT

Get ready for the most anticipated event in the landscape, grounds care, and amenity industries.

GroundsFest 2024, taking place at Stoneleigh Park, Warwickshire, on September 10 and 11, is set to return, promising an even more impressive lineup of exhibitors, new features, and experiences.

Last year, the first-ever GroundsFest took the industry by storm, heralding a new era for trade shows. Now in its second year, GroundsFest has rapidly become the largest event of its kind in the UK, boasting the most space, exhibitors, and products on display. It's also the only event in the industry where visitors can see machinery in action and can truly get hands-on with the equipment.

### Why You Can't Miss GroundsFest 2024

**Outdoor Demos:** GroundsFest gives you the opportunity to test a wide range of machinery. Experience machinery in the actual conditions they will be used, ensuring you get a true feel for their performance and capabilities.





### **NEW! Machinery Nation LIVE:**

Watch top brands compete in the ultimate machinery face-off and participate in exciting equipment challenges for a chance to win amazing prizes.

**Free Educational Seminars:** Gain insights and solutions to the industry's biggest issues. From management to apprentices, there's something for everyone. With a great action-packed seminar programme, keep an eye out for seminars on topics such as the use of glyphosate, building a successful landscaping business, how to choose the correct grass seed, integrated weed management, water management, Official Controls Regulation (OCR), pollinators, and many more.

**The Landscape Zone:** Discover the latest in outdoor environment technologies and innovations. This is a must-attend for landscape architects, garden designers, contractors, and more.

**Free Practical Training:** Enhance your skills with hands-on training sessions on a variety of grounds care

topics, delivered by Lantra-approved instructors.

**Live Music Festival and Happy Hour:** Unwind with live music, street food, and fun activities. Enjoy performances from great DJs and bands, including the returning Queen tribute band, and explore the revamped festival area with exciting new features like bumper cars. There will also be a Happy Hour from 5pm - 6pm during the festival on the first day where you can enjoy a wide range of discounted drinks.



### **New Product Launches:**

GroundsFest will feature over 500 brands and over 60 new product launches. Be the first to see these new innovations!

### **Exciting Registration Prize from Toro**

Every person who registers will have a chance to win a Toro ProStripe 560 pedestrian mower. Designed to provide a precise cut and clean striped finish, the Toro ProStripe leaves your turf looking its best. Sports fields and fine turf applications are no match for this high-quality, versatile machine.



### **Accessibility and Community Focus**

GroundsFest has quickly become known as the show that welcomes everyone in the grounds management sector. Not only does it attract industry leaders and elite brands, but it also opens its doors to a much wider range of exhibitors and visitors, making it the most inclusive event in the industry. For visitors, GroundsFest goes the extra mile in terms of accessibility. With free parking, the event ensures that more people can attend without worrying about additional costs, making the event more accessible to everyone.

The event also features a dedicated camping area with full facilities. Whether you're an industry leader or a small business, a seasoned professional or new to the industry, GroundsFest is the event where you'll feel at home.

### **Don't Miss Out**

Don't miss out on the must-attend event of the year. Secure your spot now and join thousands of industry professionals for an unforgettable experience. Register for free on the GroundsFest website and bring your email confirmation to the registration desk on the day of the event.

Profits from the event are reinvested back into the industry through the Education Fund, supporting the next generation of grounds care professionals.



For more information, please visit [www.groundsfest.com](http://www.groundsfest.com)  
You can also follow GroundsFest on Twitter, Facebook, and Instagram @GroundsFest for much more news, reviews, and insightful views



# AGROVISTA AMENITY TO MAKE EXCITING DEBUT AT GROUNDSFEST 2024

Agrovista Amenity has announced that it will be exhibiting at GroundsFest 2024. Following the resounding success of the event's debut last year, the company is eager to showcase its innovative and sustainable products to a broader audience.

Agrovista Amenity offers a wide range of products designed to meet the needs of professionals across the industry.

Visitors to GroundsFest can find Agrovista Amenity at stand L151 in the Landscape Zone. This dedicated area highlights the latest outdoor environment technologies and innovations, making it a must-visit for landscape architects, garden designers, contractors, and other professionals in the industry.

At GroundsFest, Agrovista Amenity will focus on showcasing several key products, including:

**Tree and hedge planting range:** As exclusive distributors of Tree Hugger and WhiptecBio guards, Agrovista is committed to providing affordable and sustainable tree, hedge, shrub, and vine guards that are completely plastic-free, eliminating the need for collection and disposal.

**Planting sundries:** Essential tools and materials for successful planting projects.

**Nutrition:** Solutions to support healthy plant growth and development.

**Grass and wildflower seed:** High-quality seeds for creating beautiful and sustainable landscapes.

**Hard and soft landscaping supplies:** Including reinforcement mesh and rubber grass mats.

**Equipment and workwear:** Durable and reliable products designed for the demands of landscaping professionals.

Agrovista Amenity is excited to be part of this dynamic event and looks forward to engaging with industry professionals, sharing their expertise, and demonstrating their cutting-edge products. Be sure to visit stand L151 in the Landscape Zone to discover how Agrovista Amenity can help you achieve your landscaping goals with sustainable and effective solutions.

---

For more information about Agrovista UK, visit [www.agrovista.co.uk/amenity](http://www.agrovista.co.uk/amenity)

Stoneleigh Park  
Warwickshire



REGISTER  
NOW

# GROUNDS *Fest*

- ✓ Free to attend
- ✓ Free parking

10-11  
SEPT  
2024

## Bringing the industry together.

[www.groundsfest.co.uk](http://www.groundsfest.co.uk)

### Why you need to attend...

- ✓ Outdoor Demos
- ✓ Free Practical Training
- ✓ Indoor & Outdoor Zones
- ✓ Landscaping Zone
- ✓ Retail Area
- ✓ On-site Camping
- ✓ Central location
- ✓ Evening entertainment including a fully licensed on-site bar, Live DJs and bands.

Test before  
you invest!



Network, relax and listen  
to some great music



# MOWING MADE EASY

## THE ETESIA HYDRO 80 AT REPTON SCHOOL

Maintaining the expansive grounds of Repton School requires precision, efficiency, and innovation.

For Andrew Butler, Head of Grounds and Gardens, and his team, the introduction of the Etesia Hydro 80 ride-on mower has not only streamlined operations but also revolutionised the way they manage the school's green spaces.

Repton School, nestled in the serene surroundings of Derbyshire, boasts extensive grounds that demand meticulous care. From ornamental gardens to sprawling lawns surrounding boarding houses, every corner of the campus requires attention. However, with limited time and resources, the grounds and gardens team found themselves struggling to keep up with the demands of manual mowing using pedestrian mowers.

Andrew explains, "There is a lot of mowing carried out around the boarding house where the team were previously using pedestrian mowers. I felt it was just taking too long, and then other jobs were getting neglected because of it. It just felt like the gardening team were out mowing all the time, and less time was being spent on the actual gardening."

Introducing the Etesia Hydro 80, a compact yet powerful ride-on mower designed to tackle both long and short grass with ease. Featuring a hydrostatic drive and a robust 15hp twin-cylinder Kawasaki engine, the Hydro 80 offers unparalleled efficiency and output. Its specially contoured deck ensures clippings are collected without clogging, even in wet conditions, while anti-scalp rollers maintain a pristine finish on uneven terrain.

Andrew recounts the transformation brought about by the Hydro 80, stating, "Now instead of spending all week mowing, it literally takes



just a couple of days. This means that we can concentrate on the gardens instead such as getting more colour into various areas. The time management is significantly better."

One of the Hydro 80's most impressive features is its ability to navigate tight spaces with ease. Andrew notes, "The reason we were using pedestrian mowers is because there was always the problem of getting a ride-on mower in and out of gates, so we thought about taking various gates out to make the job easier, but then we came across the Etesia Hydro 80. It allows us to get into areas where previously we had to use pedestrian mowers. These areas, which previously would have taken an hour or two, are now taking just 15-20 minutes.

"Its ability to cut and collect in the rain is amazing," continues Andrew. "Even in the heavy rain the Hydro 80 is going out and cutting, so again it improves our efficiency."

Beyond its efficiency, the Hydro 80's durability and manoeuvrability

have earned high praise from Andrew and his team. "I like the durability of it, how quick it is, how easy it is to manoeuvre it, and how it can get through longer grass with no problem at all," Andrew remarks.

As Repton School continues to uphold its reputation for excellence, the Etesia Hydro 80 stands as a testament to the power of innovation in grounds management, ensuring that the campus remains a source of pride and inspiration for all who visit.

---

**For further information, please contact Etesia UK on 01295 680120 or visit [www.etesia.co.uk](http://www.etesia.co.uk).**

**For more news, reviews and insightful views, you can follow Etesia UK on Twitter @EtesiaUK and like the company's Facebook page - [www.facebook.com/EtesiaUK](http://www.facebook.com/EtesiaUK). You can also view the latest Etesia videos by visiting [www.youtube.com/EtesiaUK](http://www.youtube.com/EtesiaUK).**

# Unrivalled Cut and Collect in any weather.



**2 Year Commercial  
Warranty as standard**

## The best cut and collect ride-on mowers on the market.

The Etesia range  
of ride-on rotary  
mowers sets the  
industry standard.



**Hydro 124**  
124cm cutting width  
Electric or hydraulic lift options  
2WD or 4WD models



**Buffalo 124**  
Briggs & Stratton 23hp  
124cm cutting width  
2WD or 4WD models



**Buffalo 100**  
Briggs & Stratton petrol  
or Perkins diesel  
100cm cutting width  
2WD or 4WD models



**Hydro 100 III**  
Kawasaki - Twin Cylinder  
100cm cutting width



**Hydro 80**  
Kawasaki 16hp  
80cm cutting width  
Optional differential lock



**Bahia**  
Kawasaki, Honda or  
Briggs & Stratton  
80cm cutting width  
Electric version also  
available

Full product details at [www.etesia.co.uk](http://www.etesia.co.uk)  
Contact us to arrange a free onsite demonstration  
on **01295 680 120** or [sales@etesia.co.uk](mailto:sales@etesia.co.uk)

Etesia UK @EtesiaUK EtesiaUK @EtesiaUK

# ETESIA

THE ETESIA RANGE OF RIDE-ON MOWERS



# AVANT POWER BATTERY FACTORY IN FULL SWING 500 ELECTRIC LOADER BATTERIES IN UNDER 6 MONTHS

Battery developer and manufacturer Avant Power, the new subsidiary of loader manufacturer Avant Tecno Oy, has exceeded its strict targets. Double the number of batteries has been manufactured compared to the original plans.

YLÖJÄRVI, FINLAND - Battery manufacturer Avant Power has just completed its five-hundredth high-power battery for an electric loader.

“Our battery production started in February this year, so we have made 500 batteries in about five and a half months,” says Mikko Piepponen, COO of Avant Power. The battery plant’s manufacturing capacity is even increasing, as a second production line is currently being built next to the first line.

Located next to Avant Tecno’s loader factory, Avant Power has operated at record speed since the very beginning of the subsidiary. The battery manufacturer has developed a completely new product and production simultaneously in only

about two years.

The Avant Group decided to start battery manufacturing because there were no batteries perfectly optimized for Avant loaders in the world, and the company had enough creative expertise to conquer this new territory.

### Double the pace with dedicated collaboration

Avant Power’s rapid product development and production can be explained by three factors. They are the company’s own top team, excellent subcontractors, and the trust, support, and shoulders of the Avant Group.

“Seamless cooperation with professional, flexible, and responsive subcontractors has made the whole thing possible. We have developed manufacturing methods together with our subcontractors, and they have thrown themselves fully into it, even though they did not know in advance how everything would work out. That spirit of doing things is exactly what we had been looking for. In the end,

we managed to manufacture double the number of batteries compared to the original plan,” Piepponen says.

The battery factory’s cooperation with the Avant loader factory has been important. “The spirit of Avant is that everyone pulls together. Loader design has played a major role, as has the prototype workshop, marketing and sales, and the entire factory. We have all done this together,” Piepponen says.

The COO describes the battery factory’s own team as unique. “This would not be possible without good team spirit. Even a small team can be very strong when it is competent, flexible and dedicated. Now it’s time for this group to go on well-deserved summer holidays. After that, we will start a second production line, and new products are constantly being developed. We will tell you more about them later,” Piepponen promises.

For more information, please visit [www.avant.co.uk](http://www.avant.co.uk)

**AVANT**<sup>®</sup>

# Work smart not hard.



Discover unparalleled versatility and strength with Avant Loaders. From lifting heavy loads to maneuvering with precision, our machines excel in landscaping tasks. Explore our diverse range of over 200 attachments and unleash the full potential of Avant on your business.

- ✓ Optidrive™ drive circuit gives more power for the drive and hydraulic attachments.
- ✓ Greater reach with Avant's signature telescopic boom

Learn more at [avant.co.uk](http://avant.co.uk)



# SUSTAINABLE SEED GUARANTEED AS DLF RETURN TO GROUNDSFEST – STAND 30

Sustainable seed solutions for lawns and landscapes are set to be showcased as the world's largest grass seed breeders, DLF, return to GroundsFest. Stand 30 will be the platform for visitors to find out more about mixtures across the Masterline, MM and Johnsons Sports Seed brands, alongside the very best the industry has to offer in both native and non-native wild flowers.

In many aspects of modern life, we are encouraged to be mindful of our impact on the environment - and this is certainly the case for turf managers across the sporting and amenity spectrum. Those looking to reduce inputs, without detriment to turf quality and performance can improve credentials through careful seed selection, such as opting for mixtures containing Microclover®. Visitors to GroundsFest can find out more about DLF's Ecosward mixtures - specifically blended to

reduce input costs and be kind to the environment by eliminating the need for excessive fertiliser, water and herbicide.

Incorporating 5% Microclover®, both PM26 Ecosward and PM27 Ecosward Plus from the Masterline range offer low-maintenance yet tolerant and visually attractive swards, ideal for landscape applications.

For those maintaining sports turf, thoughts are turning to autumn renovations, where speed of establishment is key. The larger seed and improved genetic vigour of DLF's 4turf® tetraploid variety ensure fast germination and establishment in cooler temperatures, together with demonstrating increased tolerance to stresses such as cold, drought and a range of common turf diseases. 4turf® is incorporated into a number of popular autumn

mixtures for sports turf, including J 4Turf 50 and J 4Turf 100 from the Johnsons Sports Seed collection.

The DLF technical team will be on hand to discuss the vast array of popular sports and landscape mixtures, together with the popular Pro Flora and ColourBoost wildflower ranges. DLF have significantly increased in-house production facilities during 2024 to meet the growing demand for conservation mixtures and promising greater capacity to support biodiversity projects. With over 25 mixtures available across the two collections, there's something to suit all facilities and environments - whether the objective is native origin colour and interest, or high impact dazzling displays!

[www.dlf.co.uk](http://www.dlf.co.uk)



## DSV TO UNVEIL EUROBEAT AT GROUNDSFEST 2024



DSV is set to make a significant impact at this year's GroundsFest, introducing their latest innovation in grass seed, EUROBEAT, on stand 29. The event will take place on September 10 and 11 at Stoneleigh Park, Warwickshire, offering attendees a chance to discover

this high-performing addition to DSV's renowned range of grass seed.

### Introducing EUROBEAT

EUROBEAT is a top-tier ryegrass specifically bred for sports applications.

Its performance in the Sports Turf Research Institute (STRI) test series has been outstanding, earning a TOP 10 rank and demonstrating the superior capabilities of DSV's turfgrass breeding department. EUROBEAT boasts exceptional summer and winter appearance scores, setting it apart as a top performer in traffic tolerance, crucial for sports pitches.

### Key Benefits of EUROBEAT:

**Optimised for Sports Pitches:** EUROBEAT's design caters specifically to the rigorous demands of sports environments.

**Superior Wear Resistance:** With a 20% improvement over standard ryegrass, EUROBEAT excels in durability.

**Year-Round Performance:** High aspect scores in both summer and winter ensure a consistently attractive and resilient turf.

**Ideal for Overseeding:** EUROBEAT's characteristics make it perfect for enhancing older pitches and supporting autumn sowing for winter appearance boosts.

EUROBEAT's versatility makes it an excellent choice for renovation mixtures, providing an upgrade in both performance and quality for existing sports fields.

[www.dsv-uk.co.uk](http://www.dsv-uk.co.uk)

## HARROWDEN – A KEY PART OF YOUR BNG TOOLKIT

Harrowden began as four independent turf businesses but is now a national horticultural grower specialising in amenity lawn turf, wildflower turf, sedum, topsoil, plug plants, grass and wildflower seed. It also supplies an extended range of trade-rated horticultural products and tools to enable professional



contractors to deliver outstanding results on new landscaping projects or as part of the ongoing maintenance of green spaces.

In an era where environmental conservation is at the forefront of global discussions, the concept of Bio-Diversity Net Gain (BNG) has gained significant traction. BNG focuses on enhancing and preserving biodiversity within and around development projects.

Why not adopt some of the BNG principles in your everyday horticulture / landscaping / gardening?

Harrowden is well placed to support the achievement of BNG targets through a combination of flat and pitched roof green roof kits, extensive green roof sedum matting, Meadowmat wildflower turf and two types of insect habitat.

[www.harrowdenturf.co.uk](http://www.harrowdenturf.co.uk)

## YOUR BIODIVERSITY NET GAIN TOOLKIT



Looking for BNG inspiration? From Meadowmat wildflower turf, seeds, plants, and Enviromat sedum mat, we have a range of BNG solutions. See us at GroundsFest stand L64.

 **Harrowden**  
[WWW.HARROWDENTURF.CO.UK](http://WWW.HARROWDENTURF.CO.UK)



# MAKE LIGHT OF LARGE LAWNS WITH NEW GREENWORKS 60V BATTERY- POWERED RIDE-ON LAWNMOWERS

New from Greenworks, one of the UK's leading brands of cordless gardening and power tools, is the battery-powered Crossover range of ride-on lawnmowers, which offer a powerful, efficient and environmentally friendly solution to mowing larger lawns.

Featuring 24hp equivalent brushless motor technology and powered by lightweight 60V batteries which can be charged in as little as 90 minutes, the new Crossover ride-on lawnmowers can cut up to 8,000m<sup>2</sup> on a single charge or equivalent to 2 acres. The batteries are also interchangeable with other 60V tools from Greenworks, such as hedge trimmers and leaf blowers.

There are two models to select from: Crossover T with steering wheel control, and Crossover Z adjustable

lap bars which have the added benefit of individually powered rear wheels for a true zero-radius turning circle, making it ideal for mowing around trees, bushes and other obstacles.

Greenworks Crossover ride-on lawnmowers are equipped with two dual-action steel blades that have a wide cutting width of 106cm (42") and seven adjustable cutting heights of 38mm-105mm. Grass cuttings are conveniently discharged to the side or mulched. For added convenience, they have a rear carry tray and tow-hitch for a garden trailer.

Ergonomically designed, the Greenworks Crossover lawnmowers include a high-back padded seat with back support and foldable armrests for comfort and safety. Safety is further enhanced with the

addition of high-intensity LED lights for extra visibility whilst mowing in low light conditions. A robust steel chassis makes for a durable, long-lasting lawnmower that can be across a range of lawn terrains.

Mark Moseley, Sales & Marketing Director, said: "Greenworks Crossover lawnmowers are not only good for your lawn and for your comfort, but also the environment due to them being emissions-free and much quieter than a regular petrol-powered ride-on lawnmower. Plus, they're competitively priced!"

---

**To discover more on Greenworks 60V Crossover ride-on lawnmowers, and to become a Greenworks Stockist, visit [www.handys.co.uk](http://www.handys.co.uk) or email [sales@handys.co.uk](mailto:sales@handys.co.uk)**



Nothing but **HEAVY DUTY**.™

**ZERO**  
EMISSIONS IN USE

# LEADING THE CHARGE



**DECIBEL (DB)  
REDUCTIONS**

**NO PETROL  
EMISSIONS**

**SAVE ON  
MAINTENANCE & REPAIR**



**PETROL EQUIVALENT  
PERFORMANCE**



**LOW  
NOISE**



**NO PETROL  
OR LOCAL EMISSIONS**



**LESS  
DOWNTIME**



**ENHANCED  
JOB SITE SAFETY**



**INCREASED  
PRODUCTIVITY**

## WHAT ARE MILWAUKEE® DOING?

**ENSURING OUR USERS CAN  
WORK SAFELY, SUSTAINABLY,  
AND PRODUCTIVELY.**

**NO LOSS OF POWER. NO LOSS OF  
PRODUCTIVITY. BETTER FOR YOUR  
PEOPLE. BETTER FOR OUR PLANET.**

## COMMITTING TO ZERO NET GAINS

Decisions over the next decade will play a critical role in determining the pathway to 2050.

Total CO2 emissions would need to fall by around 45% from 2010 levels by 2030\*.

## WHAT WILL THAT MEAN FOR YOU?

EU Member States will need to develop long-term strategies to reduce greenhouse gas emissions and meet commitments. Projects are at risk of being shut down if they do not meet emissions standards.



# TRANSFORMING A BROWN FIELD INTO URBAN NATURE

## 1. Project Statement

In the busy center of Bangkok, Thailand, with a low budget and limited period of 18 months, a former tobacco factory site has been transformed into a low maintenance green lung that regulates stormwater, cleanses contaminated water, provides habitats for wildlife, and has created the largest public space for the dense population living downtown and beyond. The project has become a new cultural icon for the capital city and showcases a replicable modular approach to earthworks practice that transforms and recycles the lifeless concrete ground into a resilient living ecosystem that provides a full range of ecosystem services.

## 2. Site and challenges

Located in the Chao Phraya River delta, Bangkok is a densely populated capital city with a population of over 10.5 million. The flat, low-lying urban area has an average elevation of 1.5 metres (4 ft. 11 in.), or lower than sea level. Most of the area was originally swampland, which was gradually drained and irrigated for agriculture through the construction of canals. The region falls under the influence of a monsoon climate, with an average precipitation of 1500 mm (59 in) of rain per year. Subsidence has been a major problem, caused by extensive groundwater pumping, which together with global warming has resulted in increased flood risk due to its low elevation and

inadequate drainage infrastructure. Heavy downpours often resulted in urban runoff that overwhelmed drainage systems and caused severe flooding affecting much of the city.

Measuring 102 acres in size, this project is located in central Bangkok, in Khonti District. The former tobacco factory is densely occupied with single floor warehouse buildings, scattered in between with a number of canopy trees. The site is surrounded by Phaisingto Canal to the north, which was contaminated with urban runoffs and sewage. To the west, the Duang Phithak Urban Expressway cut the site from the adjacent community. There is also an artificial lake to the east, a rehabilitation hospital,

a hotel, and the Queen Sirikit National Convention Centre to the south. Besides the challenging site, the budget for this project was eventually limited to just 20 US dollars per square meter, and it was expected to be finished in a very short timeline of 18 months. The project was overseen by the army, with very little experience and skills in landscape projects.

In addition to the high risk of urban flooding, the canal at the north border is heavily contaminated. Except for a small tobacco factory museum and a sports center, there are no required programs for the site. The design was the result of an international competition.

**3. Design objectives and strategies**

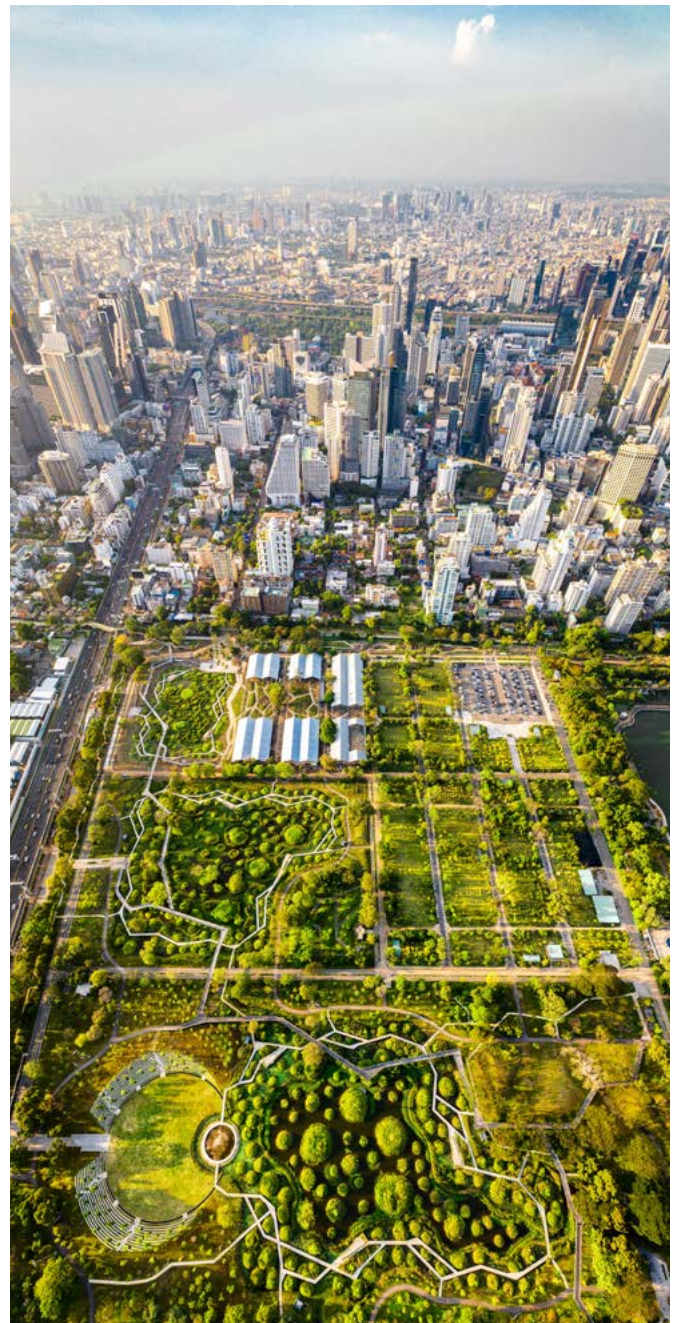
In addressing the multiple challenges of the site and the city, the project was intended to be designed as a central park that can provide holistic ecosystem services to the city, including stormwater regulation to adapt to the changing monsoon climate. It was also intended to demonstrate a nature-based solution to cleansing ubiquitously polluted urban water, life supporting for native species, and also as a public space badly needed for daily recreational activities and other cultural services. For these objectives, three strategies were applied:

**3.1 Recycle and reuse**

All existing trees on the site have been preserved and integrated. To keep the budget low, all main roads of the existing grid are also being preserved. Both the sports center and museum are designed using the existing factory buildings, which will be fully integrated into the landscape. The demolished concrete materials will be recycled for the earthwork foundation and paving.

**3.2 Creating porosity and wetlands**

Firstly, cut-and-fill is used to create wetlands dotted with islets. Without importing or exporting earthwork, three constructed wetlands scattered with hundreds of mini-





islands are created by simple cut and fill to transform the concrete-paved ground into a spongy and porous landscape, which is expected to retain stormwater from the surrounding area during the monsoon season (up to 200,000M<sup>3</sup>). This tilled landscape also turns the otherwise hard clay surface

soil into a wet and spongy habitat allowing a rich native community to be established, with minimum irrigation or maintenance needed during the dry season. This modular landscape can be easily executed by one singular digger and minimizes its dependence on labor skill and makes the army operation feasible.

The foundation and foot of each islet are consolidated using recycled concrete materials. While pre-existing trees are to remain at the center of individual islands, young seedlings of the canopy trees are planted on each of the newly constructed mounds at minimum cost. The wetlands are designed at two elevations, with a deeper core area and the terraced shallow shoreline. The latter is connected to the linear water remediating wetland built along the north and west border of the park that filtrates the contaminated water from the canal, and cleanses 8152m<sup>3</sup> of water from the poorest V grade to III grade each day. The amount of cleansed water is enough to keep the wetlands nourished during the dry season and turn the shallow shoreline into a life supporting ecotone that allows a lush vegetation community to be established.

Secondly, while the major roads are preserved and reused, a leaner cut is made in the middle of the pavement

to create a permeable bio-swale and flower bed that separates bicycle lanes and pedestrian paths, bringing the wide truck road to a human scale.

Thirdly, for the sports center and museum that make use of the existing buildings, the principle of porosity is also applied to transform the factory building by daylighting portions of the roofs and allowing the living landscape to penetrate through the extensive concrete cove.

### 3.3 Initiating a low maintenance "Messy Nature"

The modulated landform with a diverse micro-environment initiates the evolution of a semi-natural plant community starting with seed sowing and tree seedlings, which results in a low maintenance vegetation that will be continually and spontaneously enriched by native species. A symbiotic



ecological interrelationship is expected to develop between fauna and flora. The messiness of the constructed wetland thus creates a new aesthetic of dynamism and diversity in contrast with the typical urban landscape.

### 3.4 Creating immersive people places

Multiple boardwalks are designed along the shallow wetland at the edge that provide visitors with an immersive experience of urban nature. A sky walk runs through the preserved canopy trees and connects the park, previously separated by major roads, to create a unique immersive experience through the tropical foliage.

## 4. Performance

Benjakitti Forest Park, though built in short period of time, has demonstrated a great success. In the last summer, most of Bangkok city was flooded but not this park and its vicinity. The water remediating wetland performs well and produces enough water to keep the wetland survive the dry season. A rich variety of birds and other wildlife have taken home in this park, in total 91 species of birds were seen in this rewilded urban nature. The most striking achievement is that this green lung has truly become the largest central park for the densely populated central Bangkok and attracts tens of thousands of visitors daily who uses it for all kinds recreational activities, such as jogging and cycling, family gathering, commencement, picnic, dating, wedding photographing. It was celebrated as the new icon for the capital city as one can read through the social media.

**Dimensions:** approximately 102 acres in central Bangkok's Khonti District

**Materials:** The project emphasizes the reuse and recycling of materials to maintain a low budget. Existing concrete materials from demolished structures were recycled for the earthwork foundation and paving. Recycled concrete materials were also used in consolidating the foundation and foot of each individual islet within the wetlands.

**Fabrication Techniques:** Reuse and Recycle: Existing trees on site were preserved and integrated into the park design, while existing main roads were preserved to minimize costs. Repurposed factory buildings house the sports center and museum, with daylighting techniques applied to portions of the roofs to allow natural light into the structures. Creating Porosity and Wetlands: Cut-and-fill techniques were employed to create wetlands dotted with islets without the need for importing or exporting earthen fill. A simple cut and fill process, executed with a single excavator, was used to transform the impermeable, concrete-paved ground into a spongy and porous landscape. Each major wetland is

designed with terraced shorelines and deeper core areas, with recycled concrete materials used for consolidation. Fostering a Low-Maintenance "Messy Nature": The landform was modulated to create diverse micro-environments, sown 3 of 104 of 10 with seeds and planted with tree seedlings to establish a semi-natural plant community. This approach promotes a low maintenance mosaic of vegetation that continually evolves with native species. Creating Immersive Places for People: Boardwalks along the shallow wetlands and a skywalk through the tree canopies provide immersive experiences amidst the urban nature.

### Manufacturing/Building Process:

The project was completed within a compressed timeframe of just 18 months, employing efficient techniques such as cut-and-fill procedures executed with minimal labor and the reuse of existing structures. The modular approach to landscape design facilitated the creation of a resilient ecosystem capable of providing various ecosystem services while minimizing construction complexities.

# GREENBLUE URBAN'S SUDS SOLUTIONS TRANSFORM WOOD STREET



GreenBlue Urban is delighted to showcase our collaboration on the transformative Wood Street project in Cardiff, executed in partnership with Arup, Cardiff Council, and Knights Brown. This initiative significantly enhanced the local community by addressing urban challenges through innovative green and blue infrastructure.

The project removed 6,800m<sup>2</sup> of impermeable surface from the combined sewer system, ensuring resilience against 1 in 100-year rainfall events. Road space was reallocated to create wider pavements, integrated seating areas, enhanced cycling infrastructure, and new green spaces. This transformation from a grey, urban street to a vibrant green space improved air quality with 25 semi-mature trees, six large biodiverse rain gardens, and three sedum-roofed bus stops.

## Commitment to Quality

Despite the potential for value engineering to reduce green infrastructure, all stakeholders remained committed to nature-based solutions. Multidisciplinary coordination meetings and designer-



contractor workshops ensured that the trees and planting were installed as designed, even when site limitations necessitated minor adjustments.

As a gateway to the city, Wood Street now improves accessibility from adjacent southwest wards, enhancing visibility and safety. The tree-lined street connects more people to green spaces, particularly benefiting commuters and workers in Central Square.

## Overcoming Challenges

The project team creatively navigated numerous utilities and flat site conditions to ensure adequate soil volumes for tree health and effective water flow into SuDS features. Engagement with various stakeholders throughout the design

and delivery phases was crucial to resolving potential conflicts.

Utilising the GreenBlue Urban ArborFlow SuDS solution, with RootSpace soil support cells, Root Management and Irrigation products, and the specially designed soil, ArborSoil HydroMax. This manufactured soil is designed to be used in tree pits and rain gardens to maximise the pollutant removal, encourage healthy tree and plant growth and deal with large volumes of water in extreme rain events. The SuDS features treat highway runoff, reducing contaminants. The diverse planting, including native species, attracts pollinators and enhances local biodiversity.

## Testimonials

Ian Titherington of the Welsh Government praises the project as “an exceptional example of what can be achieved with SuDS in a heavily developed city centre.”

Dan De'Ath, Cabinet Member for Strategic Planning and Transport, lauds the transformation for its visual improvement and flood mitigation benefits.

The multi-award winning scheme, was recently crowned the winner at the 2024 SuDSdrain awards for Regeneration and retrofit - small scale.

The project exemplifies the successful collaboration between Arup, Cardiff Council, Knights Brown, and GreenBlue Urban, showcasing our shared dedication to creating sustainable, healthy urban environments through innovative SuDS solutions.

[greenblue.com](https://www.greenblue.com)  
Photo credit: Arup



Discover more  
visit [greenblue.com](http://greenblue.com)

Enabling

Award Winning

Public Spaces



**Green**

**Blue**

**Smart  
Space**

GreenBlue Urban's unique suite of products act as the interface between nature and the built environment.



**RootSpace**

Suspended pavement support system



**SuDSPod**

On Plot Attenuation



**HydroPlanter**

Modular 'Plug & Play' Rain Garden



**Street Furniture**

Unique street furniture designs

T: +44 (0)1580 830 800  
E: [enquiries@greenblue.com](mailto:enquiries@greenblue.com)  
W: [greenblue.com](http://greenblue.com)

 **MADE IN  
BRITAIN**<sup>®</sup>

**GreenBlue**<sup>®</sup>  
URBAN   
Creating healthier urban spaces in harmony with nature



# **GREEN-TECH HELPS THE POINT AT POLZEATH MEET PLANNING REGULATIONS WITH A SUSTAINABLE GREEN ROOF SOLUTION**



The Point is a collection of self-catering holiday homes in the heart of picturesque Cornwall. The family-run business includes The Point at Polzeath, where several timber-built cabins have been created which required green roofs to be installed to comply with planning regulations.

Wheelbarrow Landscapes provides professional landscaping and garden maintenance services throughout Cornwall. The company is renowned for excellence in landscaping and garden maintenance and was chosen to fulfill this challenging project. A long-term customer of Green-tech, they turned to their sales advisor George Barton for advice and expertise in supplying green roof materials.

The primary challenge of this project was to source a solution that managed the weight limitations on the cabin roofs. Initially, the project envisioned using topsoil with wildflowers, but this was rendered unfeasible due to weight constraints.

After exploring available solutions, Wheelbarrow Landscapes opted for Green-tech's proven roof garden solutions, which included Gt RoofDrain for drainage. This

is lightweight drainage layer that enables the collection and storage of water whilst providing a continuous drainage layer across the roof structure. The core acts as a water reservoir for plant roots to access in dry periods.

Green-tree roof garden substrate was chosen for the planting scheme. It is a blend of lightweight aggregate and award-winning Green-tree topsoil, which is ideal for green roof construction projects, due to its weight, excellent water-holding capacity, optimum drainage properties and good levels of aeration.

Instead of wildflowers or a planting scheme Green Roof Sedum matting was suggested and chosen. This is a lightweight and drought-tolerant green roof vegetation option, ideal for green roofs, especially those with a shallow substrate layer, as in this case. A Sedum Matting roof is a low-maintenance option that provides biodiversity, insulation, improves air quality in urban landscapes, and increases habitat creation. The plants offer a variety of leaf types and flowers which creates a blend of beautiful colours and textures when planted together.

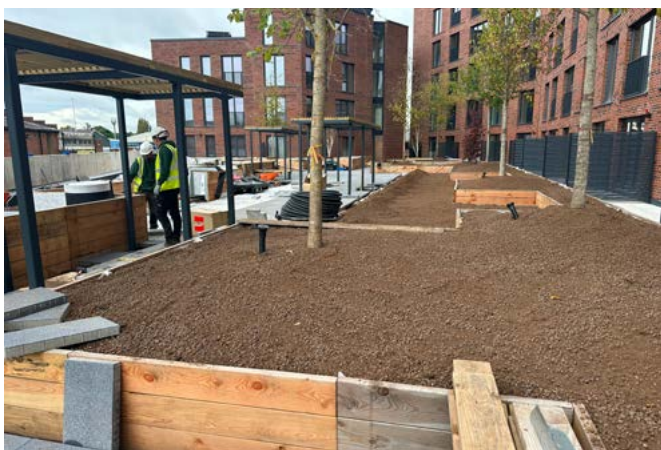
Finally, Edge Guard was supplied to retain the lightweight substrate, which was especially important in areas that were lacking upstands.

James Ricks, Director at Wheelbarrow Landscapes comments, "We use Green-tech for all of our soft landscaping sundries and they always supply all the products we require, as and when we need them. They are knowledgeable and a pleasure to deal with. Green-tech was able to supply all the products we required for us to install the green roofs and also supplied the Edge Guard powder coated in black to match the black timber cladding. Our client was delighted with the finished product and plans to use it throughout the site on the remaining cabin roofs once they are all built."

The installation at The Point at Polzeath is testimony to the synergy between sustainable design and innovative environmental solutions. Green-tech's products addressed challenges such as weight limitations and maintenance concerns and played an essential role in enhancing the aesthetic appeal and ecological sustainability of the project.



# GREEN-TREE SUBSTRATE SUPPLIED FOR CITY CENTRE DEVELOPMENT DESIGNED FOR AN 'INSIDE-OUTSIDE LIVING EXPERIENCE'



Springwell Gardens is a prestigious 31-million-pound project in Leeds. It comprises 16 storeys and 223 one, two and three-bedroom apartments.

Funded by Leeds-based developer Citylife, Springwell Gardens will create a new relationship of building to skyline, increasing residential capacity in the city.

Located just a 10-minute walk from Leeds train station, this progressive development encourages inside-outside living experiences to foster inclusive communities and aims to provide the best of city living for the people of Leeds. The new building includes private roof terraces with skyline views, private courtyards, and communal gardens for residents to enjoy community leisure space.

Palmer Landscapes was awarded the landscaping contract, which included the creation of extensive rooftop gardens and communal gardens. They turned to Green-tech to supply over 100m<sup>3</sup> of Green-tree Intensive Roof Garden Substrate and 28m<sup>3</sup> of lightweight subsoil.

Green-tree Intensive Roof Garden Substrate is a blend of lightweight aggregate and award-winning Green-tree topsoil. It is ideal for green roof construction projects and particularly containerised planting. Intensive roofs are heavier and deeper green roofs and their growing media ranges in thickness from 200mm to 1000mm. This deeper soil allows intensive roofs to accommodate large plants and plant groupings. The excellent water-holding capacities of Green-tree Intensive Roof Garden Substrate ensure healthy plants and trees in a roof garden environment.

Green-tree's lightweight Roof Garden Subsoil is a specially designed blend to complement and work in conjunction with our Intensive and Podium Deck Roof Garden substrates. The product is a blend of lightweight aggregate and specially selected washed silica sand. The sand has been sourced to give the substrate optimum drainage properties and offer good levels of aeration.

Senior Key Account Manager Mark Browne explains, "Green-tech has a long-term and established relationship with Palmer Landscapes. Coupled with our ability to supply materials with a quick turnaround made us their first choice. This was a city centre project, so we needed to work around strict site times and restrictions. We supplied the Green-tree intensive substrate loose on demand, so we needed consistent and clear communication between Palmers, the sales team and our operations team to ensure the product was delivered as and when required whilst adhering to the city restrictions."

Ryan Horsman, Head Estimator at Palmers adds, "Green-tech were one of our main suppliers for the Springwell Gardens Project. We pride ourselves on high-quality work and the Green-tree intensive soil was just what was needed for a professional finish. We will definitely be using the soil on future projects. Having Green-tech as a supplier was so helpful as the material was readily available."

Ask us for a quote today



# Sustainable soils, growing media and turf

**NEW**  
Bio-retention soil mixes now available!

## **British Standard Topsoil**

Light in texture with good water holding capacity. Ideal for environmentally conscious landscaping and construction projects.

## **British Standard Subsoil**

A high quality, clean and consistent soil with full traceability. Ideal for general infill, raising levels and creating landscape contours.

## **Roof Garden Substrate**

Intensive and Extensive options ensuring healthy plant establishment for rooftop or containerised planting projects.

## **Amenity Tree Soil**

Load bearing, fertile planting medium. Enables tree root infrastructure to develop under hard urban landscapes.

## **Bespoke Mixes**

Rootzones, low fertility soils, subsoil, sports soils and structural soils. New to the range are two Bio Retention soils, suitable for rain garden applications.

## **Turfs**


A comprehensive range including Wildflower Turf, which provides an instant wildflower meadow.



**T: 01423 332 100**

**E: [sales@green-tree.co.uk](mailto:sales@green-tree.co.uk)**

**[www.green-tree.co.uk](http://www.green-tree.co.uk)**

 Green-tree is a trading style of Green-tech Ltd

Proud to be a  
Supplier Member of:





# ST JAMES QUARTER, EDINBURGH

**St James Quarter, a sprawling 1.7 million square feet lifestyle district in the heart of Edinburgh, represents one of the UK's most significant city centre transformations. Officially opened by Her Royal Highness, The Princess Royal, the project is set to redefine urban retail and leisure experiences, marking a new era for the city's landscape.**

The primary aim of the tree planting initiative at St James Quarter was to enhance the urban environment, providing aesthetic, environmental, and social benefits.

This initiative aligns with Edinburgh City Council's broader goal of planting 250,000 trees over the next decade in collaboration with the Edinburgh and Lothians Greenspace Trust and Woodland Trust.

## Key Stakeholders:

**BDP:** Design Engineers - masterplanning, architecture.  
**City of Edinburgh Council:** Project oversight and strategic alignment with environmental goals.  
**OPEN, Optimised Environments - Tree Pit Design**  
**Laing O'Rourke:** Construction management and implementation.  
**MacColl and Stokes:** Landscaping: Execution of the tree planting and landscaping

The tree planting at St James Quarter involved landscaping products and careful planning to integrate green spaces into a bustling urban centre.

A significant design challenge was working around existing British Telecom (BT) services to ensure that the tree pits and telecoms

infrastructure coexisted without impeding each other.

**The GreenBlue Urban RootSpace Soil Cell** system successfully addressed this challenge, allowing for healthy tree growth while accommodating the necessary urban infrastructure.

Raised steps under the newly planted tree canopy provide a welcoming area for shoppers and workers to enjoy their lunch and fresh air, fostering a community atmosphere. The three trees contribute to the urban canopy, offering shade, improving air quality, and enhancing the overall aesthetic of St James Quarter.

## GreenBlue Urban Products installed:

- **RootSpace G2** - provides the

necessary soil volume for tree root growth in urban environments.

- **RootDirector 1000** - Guidance of roots for pavement protection
- **Re-Root Ribbed Barrier** - (600mm depth), additional protection for nearby utilities
- **ArborGuy** - Strapped anchor deadman guying system to ensure long-term security
- **RootSoil 20** - Subsoil and Mycorrhiza - tried and tested soil for long term-term tree health.
- **Arborvents** - This product ensures adequate aeration for tree roots,

which is crucial for tree health in compact urban soils.

- **Castle Tree Grilles** - Protects tree bases and integrates aesthetically with the surrounding pavement.

The tree planting consisted of a 'two cells deep' configuration, ensuring robust root support and growth. The linked tree pits facilitated a shared resource and stability amongst the trees, promoting healthy and resilient growth. Additionally, the grid system alignment ensured that the trees were precisely aligned with the seating wall, creating an aesthetically pleasing environment.

St James Quarter aims to set a precedent for future urban developments in Edinburgh and beyond.

Integrating green spaces within a bustling city centre addresses environmental goals while enhancing the quality of urban life. Integrating green spaces into a bustling city centre not only meets environmental goals but also enriches urban living. This project exemplifies how urban redevelopment can harmonise commercial, social, and ecological priorities.



The development stands as a testament to successful collaboration, showcasing how urban renewal can elevate city life by incorporating nature, prioritising sustainability, and encouraging community engagement. Catering to residents, visitors from across Scotland, the UK, and the many international tourists attracted to Edinburgh, St James Quarter is set to thrive for generations.

# NICHOLAS PEARSON ASSOCIATES



ICE South West Award winner 2024: Prior Park, Bath

We are an award-winning independent consultancy known for our excellence in providing Environmental Design services within the UK's planning and development sectors. Our track record showcases a proven ability to deliver successful, sustainable projects in environmentally and historically sensitive locations.

At the core of our success is a dedicated team of skilled Landscape Architects, Ecologists and Visualisers committed to bringing our clients' projects to life. We specialise in designing and implementing solutions that consider sustainability from the outset and integrate seamlessly with the natural and built environment.

We excel in collaborating closely with design teams, clients, and co-consultants to design, restore and deliver green and blue infrastructure projects, including parks and open spaces, Sustainable Drainage Systems (SuDs), lakes, treatment works, watercourses and coastlines.

We have a proven track record of delivering climate-resilient infrastructure solutions and prioritise shaping environments that can adapt to and address the challenges of climate change. Through a comprehensive approach, encompassing Landscape and Ecological Design, Masterplanning, and green solutions, we empower our clients to future-proof their projects and align with climate-conscious goals.



Land at North Stevenage - Visualisation of proposed SuDS basin

Central to our philosophy is a commitment to working in harmony with the landscape and with nature, fostering a sustainable future regardless of project scale. Our team of landscape architects use Landscape and Visual Impact Assessments to understand a site's context, and the factors that

contribute to or detract from its sense of place. That understanding provides a powerful foundation for developing landscape designs that both complement and enhance a site, enrich lives, and deliver true Biodiversity Net Gain.

With a keen understanding of the interplay between the built environment and human experience, our team can help you create landscapes that inspire, rejuvenate and foster well-being. Whether it's working with nature, promoting community interaction, or integrating sustainable systems, our designs are about more than simple aesthetics, enhancing the quality of life of those who inhabit and interact with our thoughtfully curated spaces.



Contact us at Nicholas Pearson Associates to start a conversation on how we can work with you to bring your project to fruition. Let us use our expertise to help you realise your aspirations while championing a more sustainable future.

Tel: +44 (0)1225 876990  
Web: [www.npaconsult.co.uk](http://www.npaconsult.co.uk)



# NICHOLAS PEARSON ASSOCIATES

Designing a better environment for our shared future



We are an independent, award-winning, multidisciplinary consultancy.

We provide complementary expertise in:

**Environmental Design, Landscape Architecture, Ecology** and **Visualisation**

For over 40 years we have brought a collaborative approach to delivering high quality, environmentally and socially responsible projects. We support a cross-section of clients at all stages of the planning, design, construction, and management process.

## Our Complementary Specialisms

Environmental Design



Landscape Architecture



Ecology



Visualisation



## Get in touch

The Farm House,  
Church Farm Business Park,  
Corston, Bath,  
BA2 9AP

Tel: 01225 876990

info@npaconsult.co.uk

## Follow Us



[www.npaconsult.co.uk](http://www.npaconsult.co.uk)

[www.npavisuals.co.uk](http://www.npavisuals.co.uk)



Find us online



Photo Credit: John Sturrock

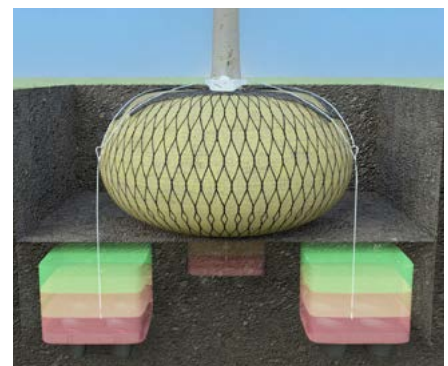
# PLATIPUS LANDSCAPE SOLUTIONS SUPPORT GREEN-BLUE INFRASTRUCTURE

In a period where urban landscapes are increasingly challenged by climate change and rapid development, Green-Blue Infrastructure (GBI) has emerged as a sign of hope. GBI integrates natural elements into our cities, creating a synergy between the built environment and nature. At the forefront of this green revolution are innovative landscape solutions from Platipus, particularly their tree anchoring systems and modular living wall, ideal for roof gardens and urban green spaces.

The Platipus tree anchoring system addresses a critical need in urban greening. As cities strive to increase their green canopy,

the challenge of establishing and maintaining healthy trees in urban environments becomes crucial. Traditional methods of tree support can be cumbersome and potentially harmful to tree growth. Platipus, with its innovative below-ground tree anchoring system, provides stability without compromising aesthetics or tree health. Their comprehensive range of in-ground and on-structure tree anchoring systems support the planting of more mature trees, which can immediately contribute to air quality improvement, urban heat island mitigation and reducing carbon dioxide in the atmosphere. By ensuring trees are securely anchored, Platipus systems reduce the risk

of failure during extreme weather events, a growing concern in our changing climate. This reliability is critical for urban planners and landscape architects who are integrating trees as key components of their GBI strategies.



One of the most exciting applications of Platipus technology is roof gardens, exemplified by the multi award-winning Battersea Power Station roof garden in London. Here, the unique Platipus D-MAN tree anchoring system played an essential role. Roof gardens present unique challenges - limited soil depth, weight restrictions and exposure to high winds - all of which the D-MAN tree anchoring system is designed to overcome.

The D-MAN system allows for the secure anchoring of trees in shallow substrates, typically found on roof gardens. By distributing the load and providing robust anchorage,

it enables the inclusion of larger, more mature trees in rooftop environments. This was especially important for the Battersea Power Station project, where creating a lush, well-established garden on top of a historic building required innovative solutions. The success of the Battersea roof garden demonstrates how the Platipus D-MAN system can transform underutilised rooftop spaces into flourishing green landscapes. These elevated gardens not only provide recreational spaces for urban dwellers but also contribute significantly to urban cooling, stormwater management and biodiversity. The ability to safely

incorporate trees into these spaces dramatically increases their environmental impact and aesthetic value.

Complementing the tree anchoring system is the Platipus G-WALL Modular Living Wall System, a versatile solution that transforms urban spaces. In dense urban environments where space is at a premium, living walls / vertical gardens offer a way to significantly increase the green footprint of a building or structure. The G-WALL system not only enhances bare boundaries and facades into vibrant colourful living walls but also provides numerous ecological benefits, acting as natural air filters and supporting urban biodiversity.

What sets the Platipus G-WALL system apart is its modular nature, allowing for easy installation, expansion and maintenance. This flexibility makes it an attractive option for retrofitting to existing structures or incorporating into new designs. The system's ability to support a diverse range of plant species ensures that it can be adapted to various climates and aesthetic preferences, making it a truly global solution for improving green infrastructure.

Together, these solutions address key challenges in implementing effective green-blue infrastructure - from street level to rooftops. They provide the means to create long-lasting green spaces that can withstand the demands of urban environments while delivering maximum ecological benefits. In embracing these technologies, city planners, developers, landscape architects and garden designers have powerful tools at their disposal to transform urban landscapes at all levels. The Platipus tree anchoring systems and G-WALL Modular Living Wall are products for change, helping to create the green, resilient cities we need for the future.



**For more information or to buy:**  
**Freephone: 0808 169 5060**  
**info@platipusdirect.co.uk**  
**www.platipusdirect.co.uk**



# ADD KERB APPEAL BY ENHANCING AESTHETICS WITH CONCRETE FENCING

We all know that kerb appeal helps not only to sell houses but also helps with look and feel of an area. Choosing a precast concrete fence system for your next project could be the ideal solution if you are looking to enhance the exterior of your scheme with a product that is durable, low maintenance and good-looking.

Paul Cartwright, Business Development Director at Elite Precast Concrete discusses how a fencing system can improve the aesthetics of your outside environment, while also increasing security and value.

## Beautiful looks

The intricate masonry impression of a Verti-Crete fence is more appealing than vinyl, wood or chain-link, with different finishes available, the remarkable beauty of hand-pressed work

With a finish on each side, the installed product looks great whichever side of the fence you are sitting. From brickwork

to cobblestone, Verti-Crete complements your development's architecture and landscaping, adding looks, security and value.

## Privacy

In a world of noise, the tall structure and solid panels can offer you peace and quiet, so you can finally hold a celebration without your local neighbourhood inviting themselves over.

## Durability

Unlike fragile materials such as wood and vinyl fencing that can suffer from denting, corrosion or fading from UV damage, a precast concrete wall will truly stand the test of time. The unbeatable durability of Verti-Crete walls is a long-term investment that saves you both time and costs.

## Easy installation

Hollow-core posts are placed on a concrete base with panels set to fit securely between the posts. After each section is squared up and levelled, the columns are filled with concrete to secure the connection.

This faster and lighter methods mean less costs are incurred for heavy equipment.

## Security

Keeping unwanted guests at bay, Verti-Crete walling and fencing secures your surroundings with tall decorative panels that detract unwanted visitors and help keep you safe.

## Exceptional value

Precast concrete is an affordable option to many construction materials, such as wood, vinyl or stone masonry and a Verti-Crete wall involves less labour, less equipment and ultimately, less cost.

Best of all, our fences and walls will not fade in the sun and can withstand hard weather conditions, so they'll look just as the day they were installed.

**For more information, please visit [www.eliteprecast.co.uk/concrete-fencing-products/verti-crete-walling-and-fencing/](http://www.eliteprecast.co.uk/concrete-fencing-products/verti-crete-walling-and-fencing/) or speak to Paul on 01952 588885**



# Verti-Crete Fencing & Walling System



Secure and Private



Effective Sound Barrier



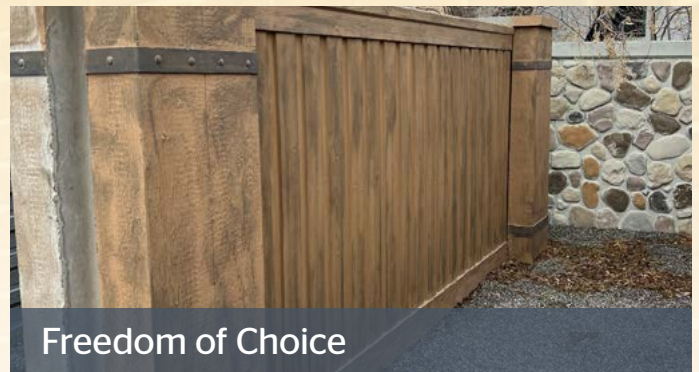
Fast to Install



Design Flexibility



Cost Effective



Freedom of Choice

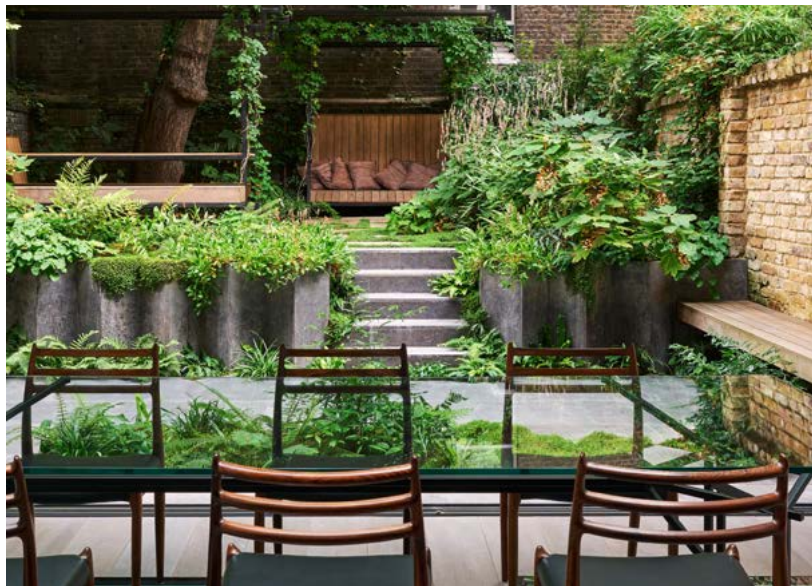


Creating safer spaces with  
fencing & walling solutions



For more information please call 01952 588 885  
email [sales@eliteprecast.co.uk](mailto:sales@eliteprecast.co.uk) or visit [www.eliteprecast.co.uk](http://www.eliteprecast.co.uk)

## OFFERING UNPARALLELED EXPERTISE IN NATURAL STONE AND MASONRY



Stoneworld customers benefit from our ability to bring complex visions to life with unmatched accuracy. Our commitment to integrating modern technology with traditional craftsmanship ensures that each project not only meets but exceeds client expectations. Whether it's crafting bespoke curved stone steps or seamlessly integrating stone pieces into stainless steel structures, our capabilities redefine possibilities in contemporary stone design.

Our collaborative approach and dedication to excellence make us an ideal choice for those looking to elevate their projects with high-quality, custom stone masonry. Talk to our team of experts today to find out how we can help bring your project to life in the highest quality natural stone.

[www.stoneworld.co.uk](http://www.stoneworld.co.uk)

At Stoneworld Oxfordshire, we offer unparalleled expertise in natural stone and porcelain masonry, making us an invaluable partner. Equipped with cutting-edge technology, including a 7-axis robotic stone carver and digital templating tools, we ensure precision and innovation in every project. Our state-of-the-art masonry workshop allows us to create bespoke stone features, from intricately designed ecclesiastical sculptures to custom staircases and landscaping elements.

A photograph of a large industrial robotic arm in a workshop setting. The arm is white and grey, with a long, articulated arm extending upwards. The background is a dark, industrial environment.

**STONeworld**

SCAN ME

**BESPOKE MASONRY SERVICES**

STEPS | COPINGS | PIER CAPS | SCULPTURE | PAVING | WALLING | ROCKERY

[www.stoneworld.co.uk](http://www.stoneworld.co.uk) (01844) 279 274 [sales@stoneworld.co.uk](mailto:sales@stoneworld.co.uk)

# LTP CELEBRATES 40TH ANNIVERSARY



This year, LTP is proudly celebrating its 40th anniversary. Since the company was founded by Anthony Robb in 1984 much has changed, not least the breadth of tile and surface care products now available and the company's own reach. Today, LTP supplies over 700 stockists throughout the UK and Ireland and has become one of the major suppliers of sealing, cleaning and maintenance products to the tile and stone market. It also exports to countries including Bulgaria, China, Czech Republic, Ireland, Romania, Spain and the UAE. Turnover, during the last three years, has increased by over 300% and much is planned for the future.

LTP's history dates back to the creation of Wellington Tile; a company founded by Anthony Robb to import terracotta from Portugal. Recognising the need for an ageing liquid to give terracotta an antique finish, Anthony mixed up a secret brew in his cement mixer, bottled it in one litre jerry cans and branded it LTP OLDTONE OIL. Why 'LTP'? Because the terracotta was sold as Lionheart Terracotta, so the sealer - and subsequent treatments - became known as Lionheart Terracotta Products, or LTP for short. A few weeks later, the cement mixer was in action again, this time concocting a clear finish sealer called LTP CLEARSTONE.

Today, production has moved to a specialist chemical packing company based in South West England -

and the range now includes over 32 products formulated to seal, clean and maintain every type of natural and engineered tile and stone. In 2016, LTP also launched its ECOPROTEC® brand - a range of products specially developed for the contract sector.

On the ground, the five strong sales team, which is forecast to grow, is headed by Emma Lock. Director, Mark Atkins - the first person responsible for LTP sales - now concentrates on research and development, marketing, export and expansion into other markets including white labelling and 'own branding' its formulas for other businesses.

"Over the past 40 years, the LTP range has been developed based on our first-hand experience of the tile trade and issues experienced by installers. And, despite our rapid expansion, close ties with our customers are key; we remain a business that's committed to offering a good after sales service and to developing products that customers need, rather than chemicals that we want to sell," commented Richard Osborne, LTP's Managing Director.

In terms of formulations, LTP water-based products are gaining considerable traction. Extensive research and development into

water-based formulations, coupled with increasing withdrawals of solvent based raw materials, has created a new breed of high-quality products that are equal to or superior to their spirit-based equivalents. LTP now offers a water-based equivalent alongside all its traditional sealers, with sales continuing to grow year-on-year.

"It's taken some time but we're now seeing an inexorable march away from spirit-based sealers," explained Mark Atkins. "Our own goal, over the next five years, is for 75% of our production to be of water-based, non-hydrocarbon formulations. The tile and stone industry still needs encouragement to support this strategy but the environmental benefits are irrefutable."

Alongside the switch to water-based formulations, other LTP environmental initiatives include the development of new PFA-free stone and tile sealers (free from microplastics), a reduction in waste disposal throughout its production and reusing of pallets; the sourcing of cardboard packaging from FSC accredited suppliers and the use of recyclable bottles made from recycled materials.

"What does the next decade hold beyond product development? We're dedicated to bringing along the next generation of LTP, through our apprenticeship scheme and recruitment. We'll also be growing our export network and manufacturing partnerships. It's been a fabulous journey to date and the future ahead, despite current economic challenges, looks very bright indeed," Richard concluded.



To find out more about LTP, please visit [www.ltp-online.co.uk](http://www.ltp-online.co.uk), call 01823 666213 or email [info@ltp-online.co.uk](mailto:info@ltp-online.co.uk)



# MARSHALLS LAUNCHES NEW, EASY-FIT SOLUTION FOR PATIOS AND DRIVEWAYS

Landscaping specialist Marshalls has launched Infinia, a new range that uses the latest in concrete printing technology to create a premium look with easy installation and the durability of traditional concrete.

Harnessing over a decade of innovation, Infinia is a stylish printed concrete paver for both patios and driveways. As it is made from concrete, Infinia can be cut without specialist blades and laid in the same way as ordinary concrete or block paving, according to application.

With its easy installation, Infinia offers important time and labour-saving benefits for landscapers, but it also brings big advantages for the homeowner, particularly in terms of maintenance.

Thanks to its printed surface-coated design, Infinia has a protective layer that shields the surface from stains,

fading from UV light, frost and abrasion. It also protects against the possible risk of efflorescence which is sometimes experienced on the surface of concrete products and provides a slip resistance to an R11 rating.

To give homeowners choice, the Infinia range includes a collection of nine curated designs which can be used independently or together. Each option has a minimum of 16 variations to prevent design repeats and provides a more authentic appearance. The range also benefits from excellent colour consistency between batches due to its innovative printing technology.

“Traditionally, concrete can be seen as an unattractive, budget option - especially for patios - but Infinia changes the game,” said Alice Turner, Head of Product and Campaign Marketing at Marshalls.

“With nine versatile designs the INIFINIA range offers homeowners a variety of styles to suit their project and taste. At the same time, professionals benefit from easy laying as it can be installed using everyday equipment. It’s truly a win-win for everyone.”

Marshalls is one of the first manufacturers in the UK market to adopt the specific concrete printing technology behind Infinia, which has undergone a decade of development to ensure reliability, quality, and durability. Infinia has also endured extensive testing, including controlled and in-situ applications, to assess ease of installation and maintenance.

**For more information about Infinia, please visit <https://www.marshalls.co.uk/infinia-paving>**





UK Design &  
Manufacture

## Effective root management

**Design root issues out of your project through diligent specification within landscape works - using CuTex to minimise maintenance.**

CuTex is a permeable geocomposite root barrier system, consisting of a specially formulated copper sheet encapsulated between two high-performance geotextiles. Developed and manufactured by GEOfabrics, a leading UK geosynthetics manufacturer, and tested by the University of Leeds.

- Permeable – maintains natural hydrology
- Safe & easy to install
- Enables biodiverse solutions
- Compatible with SUDs strategy
- Independently & scientifically assessed against numerous species

**Find out how you can safeguard infrastructure from tree root or invasive plant damage, whilst maintaining natural hydrology – contact our team on 0113 202 5678 or visit [www.geofabrics.com](http://www.geofabrics.com)**



**HILLS QUARRY PRODUCTS**

As a key part of The Hills Group, Hills Quarry Products has continued to build on its 124-year history with further expansion across the south of England - including the opening of new ready mixed concrete plants in Swindon in Wiltshire and Wilmington in Devon. Hills Quarry Products has also future-proofed aggregate supplies with planning approval for its largest gravel quarry to date at Down Ampney in Gloucestershire.

With eight concrete plants, seven quarries and a large fleet of tippers and mixers, including mini-mix, Hills is perfectly placed to fulfil orders of concrete, specialist concretes, floor screeds, stone, gravel, sand and unique, decorative aggregates. Muck-away and haulage services complete the offering, with several licensed waste disposal sites available. Hills Quarry Products is an active member of the Mineral Products Association.

Visit us: [hills-quarry.co.uk](http://hills-quarry.co.uk)  
 Contact us: [info@hills-group.co.uk](mailto:info@hills-group.co.uk)

**Hills Quarry Products**

Suppliers of aggregates and concrete for every need:

- ready-mixed concrete, including mini-mix delivery
- sand cement floor screed
- Cemfloor liquid screed
- decorative aggregate
- sand, gravel and stone

Telephone:  
**01793 714999**



[hills-quarry.co.uk](http://hills-quarry.co.uk)



**HEYN ENVIRONMENTAL**



Providing businesses across the UK with the very best in street furniture, traffic management and warehousing solutions

- Enhance outdoor spaces with sustainable, durable seating suitable for all environments
- Create secure areas with crowd control barriers, bollards and traffic calming solutions
- Improve employee and customer facilities with a wide range of smoking, storage and cycle shelters

For bulk order or single purchases call John Irwin on +44 (0)2890 350020 or Visit [heyn.co.uk/environmental](http://heyn.co.uk/environmental)



**UK MANUFACTURERS OF STREET FURNITURE**



- POSTS - HINGED & TELESCOPIC
- BOLLARDS - STEEL & STAINLESS
- HOOPED BARRIERS
- CYCLE STANDS & RACKS
- CYCLE SHELTERS
- HEIGHT RESTRICTORS
- SWING GATES
- ARM BARRIERS
- SMOKING SHELTERS
- SEATING



01788 550556  
[info@autopa.co.uk](mailto:info@autopa.co.uk)  
[www.autopa.co.uk](http://www.autopa.co.uk)

AUTOPA Limited, Cottage Leap, Rugby, Warwickshire, CV21 3XP

**AUTOPA**



## SUPERCHARGE YOUR STRATEGY FOR CLEANER, TIDIER STREETS TODAY

At Smartstreets we specialize in helping towns, cities and campuses turn the tide on cigarette and gum litter. We have created a unique, award-winning cigarette bin system which installs onto existing sign posts and lamp posts to create networks of disposal points that are always within reach. Simple, seamlessly integrated and very effective.

**smartstreets™**  
better by design



Cigarette and gum Smartbins  
Minibin pocket ashtrays  
Transformational Cycleparks  
Smartstreets-Gumboards

Contact us today  
**0800 328 9390**  
Email: [sales@smartstreets.co.uk](mailto:sales@smartstreets.co.uk)  
[www.smartstreets.co.uk](http://www.smartstreets.co.uk)



# ENHANCING CANTERBURY HIGH STREET: A HARMONIOUS BLEND OF NATURE AND DESIGN

## Project Overview

The revitalisation of Canterbury High Street marked a significant transformation in one of the city's most iconic thoroughfares. Tasked by Canterbury City Council, Furnitubes was engaged to breathe new life into a heavily pedestrianised area, creating a vibrant community hub that encourages residents and visitors alike to pause, relax, and enjoy their surroundings.

The project's primary goal was to enhance the High Street's functionality while preserving its natural charm. This meant carefully integrating public seating and landscaping around five mature trees, which were already providing

essential shade and contributing to the biodiversity of the area. The challenge lay in designing seating that not only respected the existing trees and their extensive root systems but also enhanced the aesthetic and usability of the space without increasing maintenance demands.

## Design Challenges and Solutions

Canterbury City Council had a clear vision: they wanted to create a seamless, organic flow of seating options that would invite people to linger, while ensuring that the trees remained central to the design. The council sought our expertise in establishing radius modules that could accommodate S-shaped and circular seating beneath the tree

canopies. It was crucial that the seating solutions did not disturb the long-established tree roots and that they required minimal upkeep.

Furnitubes responded to this challenge by working closely with the council to maximise seating potential while carefully considering the natural environment. Our design team suggested modular solutions that would not only respect the existing trees but also enhance the overall visual appeal of the High Street. The chosen design incorporated continuous, organic shapes that mirrored the natural flow of the space, creating a harmonious blend between the built environment and nature.

To address the need for more inclusive seating, we recommended the use of our Railroad range with a 700mm depth, which allows for seating on both sides of the bench. This design choice effectively doubled the seating capacity without increasing the physical footprint of the installation. Additionally, some benches were equipped with backrests and armrests, making them accessible to elderly individuals and those with mobility issues. This inclusivity ensured that the space could be enjoyed by everyone, regardless of physical ability.



### Outcome and Impact

The revitalised Canterbury High Street has quickly become a cherished part of the city's urban

landscape. The new seating provides much-needed rest spots beneath the shade of Canterbury's historic trees, allowing visitors to take a break

from shopping or simply enjoy a moment of calm in the bustling city centre. The design's success is evident in the way the space is now used—residents and visitors alike have embraced it as a place of pause and reflection.



Local feedback has been overwhelmingly positive. Shoppers, burdened with bags, appreciate the opportunity to rest outdoors: "It's our favourite part of the town centre regeneration," one shopper noted. "We like being able to take a break from shopping outside. The area is used so much more with the added seating. We often arrange to meet each other on one of the benches." Similarly, local workers have found a new favourite spot to unwind during their lunch breaks. One shop employee shared, "I like to come out here on my lunch break and watch the world go by," capturing a sentiment echoed by many in the community.

The Canterbury High Street project is a testament to the power of thoughtful, nature-respecting design. By prioritising the existing natural features and enhancing them with carefully considered seating solutions, Furnitubes has helped create a space that not only serves the community but also honours the beauty of its surroundings. This project stands as a model for how urban spaces can be revitalised in a way that fosters community engagement while preserving and celebrating the natural environment.

# FRAMING

## THE VIEW

75 years is just the beginning... At HAGS, the emphasis on sustainability has guided our efforts over the last 75 years.

Even though the concept of "sustainability" might not have been as prevalent in the past, our genuine concern for both the environment and people has always been a driving force.

As a company, we hold the responsibility of ensuring that our operations remain sustainable from economic, social, and ecological standpoints.

We have teamed up with some of the most renowned Scandinavian designers to develop a range of park and Urban Furniture products encouraging the local community to socialise and enjoy spending time outdoors.



Boasting a timeless aesthetic and improved usability, our park and urban furniture range will cope with heavy use and age beautifully over the years. Suitable for all weather conditions and environments, it has added value to many outdoor recreational spaces across the world.

As a global pioneer in designing outdoor recreational equipment, we specialize in crafting innovative park furnishings that transform areas into vibrant outdoor havens.

Embark on a journey where innovation meets purpose, and every structure tells a story of community, fun, and fitness.

Whether you're on the lookout for the perfect accent for your project or require guidance to embark on a new initiative, explore our 'Crafting Outdoor Spaces' section for a roadmap into the world of HAGS equipment. From designing your own seating area HAGS have you covered. Discover more <https://hags.co.uk/en-gb/furniture>

OUTDOOR PARK AND  
URBAN FURNITURE





# **COMBINING COASTAL DEFENCES WITH BESPOKE DESIGN: WOODSCAPE'S ROLE IN THE SOUTHSEA COASTAL SCHEME**

The Southsea Coastal Scheme is not just a large-scale infrastructure project but an initiative that melds heritage preservation with cutting-edge coastal defence. Spanning 4.5 kilometres along the Southsea seafront, from Old Portsmouth to Eastney, this £180 million project is the largest coastal defence effort led by a local authority in the UK. It aims to protect over 10,000 homes, 700 businesses, historical landmarks, and crucial access routes from the threat of flooding.

Launched in September 2020, the project replaces aging defences and rejuvenates the seafront, ensuring its resilience for future generations while retaining the area's distinctive character.

Woodscape, a leading name in bespoke street furniture, became joined the project stages two and three. The landscape architects at LDA Design, tasked with bringing both aesthetic and functional elements to the project, recognised

Woodscape's expertise and invited them to contribute. The collaboration centred on designing and supplying unique seating solutions that would reflect the nautical theme inherent to the Southsea area, inspired by the ferryboats that are a common sight in Portsmouth Harbour.

Given the challenging coastal environment, material selection was a critical aspect of the design process. Woodscape worked in





collaboration with The Environment Agency, to select Kebony®, a thermally modified softwood known for its remarkable durability and sustainability. Woodscape had previously utilised Kebony®, and its proven resilience made it an ideal choice for the Southsea seafront. This selection aligned seamlessly with the project’s emphasis on long-term environmental stewardship and durability.

Woodscape’s contributions to the Southsea Coastal Scheme went beyond standard seating solutions, providing a range of custom-designed street furniture that enhanced both the functionality and visual appeal of the promenade. Among these were double-sided seating options, featuring granite bases for stability and longevity. These seats were designed with comfort in mind, incorporating backrests and armrests that invite visitors to linger and enjoy the seafront views. The project also included the installation of both straight and curved timber-slatted wall-top seats, strategically placed to offer restful spots for visitors while withstanding the elements typical of coastal settings.

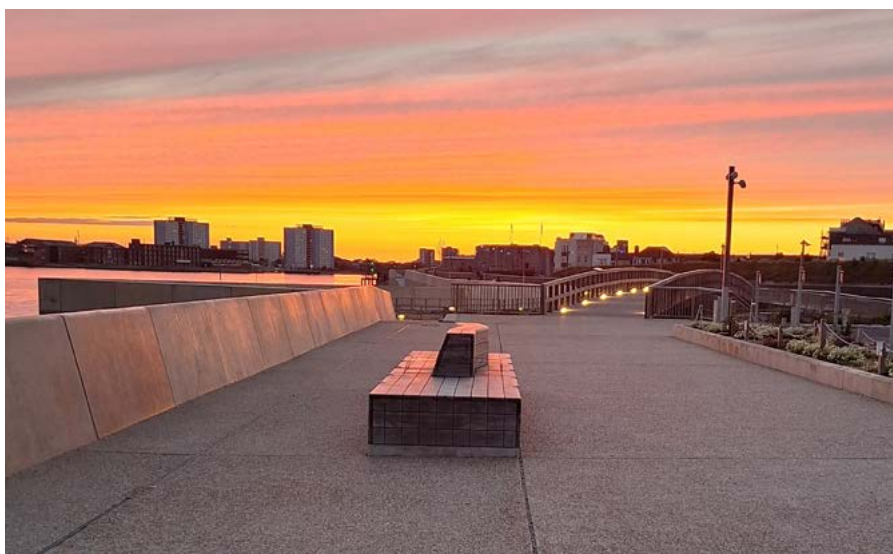
Woodscape’s contribution was the timber-framed swing seating. These swings, designed to evoke a sense of nostalgia and playfulness, have become a popular feature along the promenade. They offer visitors a unique way to experience the seafront, blending traditional charm with contemporary design elements. The swings have not only proven to be a hit for their recreational value but also enhance the promenade’s overall aesthetic, reinforcing the area’s blend of traditional and contemporary design.

Additionally, the project also saw the installation of fixed and removable hardwood bollards. These bollards were designed to provide enhanced security by controlling access to certain areas, while maintaining a cohesive visual style that complements the other elements of the seafront’s design. Like the seating, the bollards were engineered with both durability and style in mind, ensuring they contribute to both the scheme’s longevity and visual appeal.

Woodscape’s involvement in the Southsea Coastal Scheme

exemplifies their capability to deliver bespoke, high-quality street furniture that meets the stringent requirements of large-scale projects. Their expertise in material selection, structural integrity, and large-scale coordination has played a crucial role in transforming Southsea’s seafront into a resilient and vibrant public space that respects its historical roots. This project also underscores Woodscape’s commitment to creating sustainable and aesthetically pleasing designs that not only enhance public spaces but also meet the demanding standards of modern infrastructure projects.

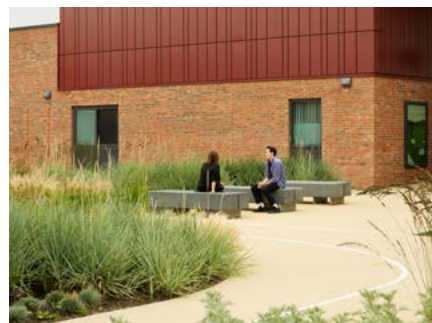
As the Southsea Coastal Scheme continues to develop, more of Woodscape’s bespoke street furniture will be installed, further enhancing this iconic seafront. Their ongoing contributions will ensure that the Southsea seafront remains a cherished and protected area for both residents and visitors, blending modern coastal defence with the timeless appeal of well-crafted public spaces.



**Project Team:**  
**Landscape Architect:** LDA Design  
**Contractor:** VolkerStevin  
**Client:** Portsmouth City Council, Environment Agency, Coastal Partners

**For inquiries about Woodscape’s street furniture solutions, contact them at:**

**Phone:** 01254 685 185  
**Email:** sales@woodscape.co.uk  
**Website:** www.woodscape.co.uk



# SYCAMORE AT NORTHGATE PARK HOSPITAL SETS A NEW STANDARD FOR MENTAL HEALTH FACILITY DESIGN

At the heart of the £60m redevelopment of Northgate Park Hospital in Morpeth (UK), Sycamore is a new medium-security hospital prioritising patient wellbeing. It offers a wide variety of welcoming indoor and outdoor settings for relaxation and activity, relieving boredom and addressing the risk of challenging behaviours and poor physical health. These settings are enriched with a high-quality palette of landscape materials, and site furnishings that play an essential role in creating a positive image and reducing the stigma surrounding mental health facilities.

Designed by Medical Architecture with landscape architecture by Newcastle-based practice Colour, Sycamore offers inpatient accommodation for 72 male patients with a spectrum of forensic mental health needs. Six patient wards are paired together and arranged

around a large recreation courtyard to form a secure boundary without the need for high fences and the imposing feeling they can create. In response to patient needs, the courtyard is divided into 'Passive' and 'Active' zones.

The 'Passive' zone provides refuge, with restful, semi-enclosed places to sit amongst plants and grasses. Streetlife's Drifter picnic sets offer opportunities for groups to casually congregate, while the linear Drifter benches that line the pathways offer plentiful seating options with views out to the wider recreation area, serving as a gentle enticement to the activities offered.

Drifter benches and Drifter top seats also provide diverse seating options along the edges of the sport courts in the 'Active' zone, which also includes a 200m jogging/walking loop, activity spaces, and a fitness

'Trim Trail' to promote physical activity and its associated wellbeing benefits.

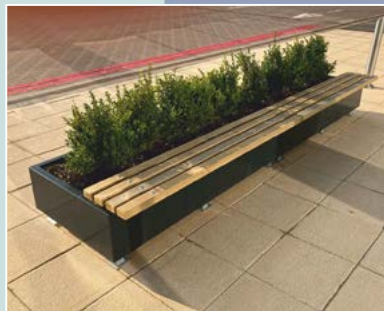
Colour selected Streetlife's furnishings here for their contemporary style and robustness. Furthermore, specified Drifter products are realized in Streetlife's material option of Lava Grey, a durable composite made entirely from recycled household plastic waste. The landscape architects note that the environmental aspect of using high-quality recyclables is also an important characteristic of these furnishings.

In summary, the innovative spatial concepts and high-quality design elements specified at Sycamore mark a progressive shift towards a new standard for mental health facility design.



# Street Design

UK BASED DESIGNERS & MANUFACTURERS OF STREET FURNITURE & LANDSCAPE PRODUCTS



## Planters with Seating

Planters with integral bench seating in a range of designs, shapes and materials

- Established in 1986
- UK based manufacturer
- Full range of Planters & Seating
- Manufactured to your specific sizes

- Choice of materials and finishes
- Low maintenance products
- ISO registered company
- FSC®-registered company

☎ 01509 815335

✉ [sdl@street-design.com](mailto:sdl@street-design.com)

🌐 [www.street-design.com](http://www.street-design.com)

ROOF GARDENS / RETAIL / RESIDENTIAL / EDUCATION / HEALTH CARE / HOTEL & LEISURE / COMMERCIAL / PUBLIC REALM



# SALTEX 2024

Join the Industry's Largest Free Learning Event at SALTEX 2024. SALTEX 2024 is set to host the most extensive free educational event in the sector, Learning LIVE. This programme features over 20 industry pioneers, technical specialists, and experts across three stages, offering an unmissable opportunity for attendees to gain insights from top professionals.

The first day will open with a panel discussion on Sustainable Solutions featuring industry giants such as Karl Standley from Wembley Stadium, Neil Stubble from All England Lawn Tennis Club, Jim Buttar from Twickenham Stadium, and Gary Barwell from Edgbaston Stadium. The day will continue with important discussions on how to attract young people to the industry,



followed by an insightful session on effective practices for maintaining 3G artificial turf, led by Professor Paul Fleming of Loughborough University.

The second day will focus on dealing with climate change challenges at top international football venues, with contributions from experts like Phil Sharples of Caspian Sport & Landscape, Vicente Alpuente of Villarreal, Iker Orue of Real Sociedad, and Dean Gilesby from Naturalgrass. The day will conclude with a session on advanced techniques for surface maintenance, offering valuable tips and methodologies.

The Spotlight Stage will feature 'Ask-the-Expert'-style forums, beginning with insights into controlling leatherjackets and chafer grubs by Dr. Christian Spring of STRI Group and Sean Loakes of Syngenta. Other essential discussions on this stage will include the future of artificial grass pitches and sustainable turf management, with presentations by leaders in the field. On the second day, the Spotlight Stage will host a Soil Health Clinic led by

experts such as Alex Vickers, a turf consultant, and Dr. John Dempsey, offering critical knowledge on soil health and management. Attendees will also have the chance to learn about the latest findings in independent turfgrass research and explore how climate effects influence turfgrass management.

The brand-new Community Sports Stage will place a strong emphasis on community and grassroots sports. The first day will cover funding opportunities for multi-sport facilities, planning for pitch improvement projects, and strategies for maintaining quality surfaces on a limited budget. The second day will start with an introduction to grass seed and fertiliser, followed by sessions on effective aeration and decompaction techniques, and will wrap up with advice on attracting and managing club volunteers.

---

**For more information and to see the full Learning LIVE schedule, visit [www.saltex.org.uk/learning-live](http://www.saltex.org.uk/learning-live). To register for SALTEX 2024, visit [www.saltex.org.uk](http://www.saltex.org.uk)**

# HEAR FROM 80+ INDUSTRY THOUGHT LEADERS

- ^ FREE CPD-accredited sessions led by industry experts.
- ^ Explore cutting-edge technologies and solutions.

- ^ Network with professionals and share best practices.
- ^ Tackle industry challenges head-on with expert guidance.



**LEE GUERRIERO**  
Stadium Operations  
and Pitch Expert  
UEFA



**MARK FERGUSON**  
Agronomist  
AELTC, the home of  
Wimbledon



**ANDREW BUTLER**  
Head of Grounds  
& Gardens  
Repton School



**MEG LAY**  
Groundsperson  
Lord's Cricket Ground



**DEBORAH COX**  
Founder  
Langan Valley Scientific



**DR JONATHAN KNOWLES**  
Head of Sport Turf Academy  
Leicester City FC

## BRAND NEW FOR 2024 **COMMUNITY SPORT STAGE**

Community Sport Zone ups the game with a dedicated stage! Expect industry talks, success stories, panel discussions, and live demos - all focused on empowering your community sports club. Learn, share, network, and get inspired!

**REGISTER NOW**



The new Z4-541, a 24hp/17.9kw addition to the range of petrol zero-turn mowers.

# KUBOTA UNVEILS NEW Z4-541, EXPANDING ZERO-TURN RANGE

**Expanding Kubota's existing zero-turn mower range and tailored for the pro-consumer market, the Z4-541 is a 54-inch petrol model which boasts a larger chassis, exceeding the dimensions of the current Z1 and Z2 models.**

## Operation and efficiency

The introduction of the Z4-541 broadens the existing zero-turn lineup, building upon a larger chassis while maintaining maneuverability comparable to smaller models.

The 360-degree turning capability enables effortless navigation around obstacles, while the machines' low centre of gravity and wide-profile drive wheels ensure exceptional stability and balance, making the machine suitable for tasks on uneven terrain.

The Z4-541's robust 54" steel fabricated deck comes as a 3-blade side discharge, with enhanced performance and cut quality, and featuring quick-dial height adjustment and K-lift deck operation for easy raising and lowering of the deck. Regardless of whether the machine is fitted with the side discharge or mulching kit, rest assured it will cover expansive areas, delivering a professional finish.

This specific model also features an optional OCDC (Operator Controlled Discharge Chute) kit, enabling operators to temporarily shut the side discharge, perfect for maintaining clean pathways and protecting parked vehicles from debris.

## Performance

The Z4-541 is equipped with a petrol Kawasaki V FS730-V engine producing

24hp/17.9kw. The design of V twin engines allows the machine to run quieter and smoother with fewer vibrations than most traditional single-cylinder engines. A rear "wrap around" bumper gives added protection and comes as standard, along with a rear towing hitch, ideal for small light trailers.

Tailored for expansive areas, the versatility of this machine makes it well-suited for tackling large residential gardens or demanding commercial landscapes and green spaces - excelling in diverse settings and guaranteeing maximum efficiency with every operation.

[www.kubota-eu.com](http://www.kubota-eu.com)  
[www.kubota.com](http://www.kubota.com)

**STIHL**



## GET IT DONE WITH BATTERY.



Experience unprecedented performance with STIHL's extensive range of professional grade battery-powered tools for commercial users.

IPX4 certification lets you continue working with confidence in the rain. Long-lasting smart batteries deliver consistent power throughout the whole battery charge. And fast chargers deliver quick recharge times so you and your tools are always ready for the job.



BGA 300 LEAF BLOWER

FIND OUT MORE AT [STIHL.CO.UK](https://www.stihl.co.uk)

**APIII**  
SYSTEM

# MIA'S BEANSTALK DREAM



In a heartwarming blend of creativity, innovation, and community spirit, Wicksteed Park recently unveiled its latest gem, The Beanstalk Dream.

At the heart of this project lies the remarkable journey of Mia Opoku Agyeman, an 11-year-old from Northampton. Mia's journey began with a spark of inspiration and a drive to turn her playground dreams into reality. Armed with nothing but determination and a knack for learning, Mia delved into the world of CAD to craft her vision of the ultimate play equipment, which led her to win Wicksteed Park's, Playground Design Competition in 2023.

Through numerous consultations with Mia and inviting her to our factory in Kettering, we worked hand in hand to refine and realise The Beanstalk Dream. Mia's personal touch and creative flair infused every aspect of the project.

The Beanstalk Dream was officially launched earlier this month, marking the finale of Wicksteed Park's ambitious @play project, supported by The National Lottery Heritage Fund. On the opening day, Mia had the honour of cutting the ceremonial ribbon herself and took the first exhilarating journey down The Beanstalk.

With its ingenious, whimsical features and boasting an impressive rota gen panel that emits the iconic "fee-fi-fo-fum" sound, it pays homage to the classic fairytale, Jack and the Beanstalk, and adds an extra layer of enchantment to the play experience.

As The Beanstalk Dream takes its rightful place among Wicksteed Park's iconic attractions, it stands as a testament to the enduring legacy of play and the boundless potential of collaboration. From Mia's inspired vision to the skilled craftsmanship of our incredible team, this project exemplifies the magic that happens when dreams take flight.

As we celebrate the success of The Beanstalk Dream, we're thrilled to announce the launch of our new Metroplex Range, inspired by Mia's incredible vision!

Designed for children aged 6 and up, the Metroplex Range is packed with exciting physical and sensory play opportunities that bring kids together and encourage them to play alongside their peers. Built for durability and endless fun, Metroplex offers something for everyone to enjoy.

Head over to our website for more information.



01536 517028  
 sales@wicksteed.co.uk  
 Digby Street, Kettering,  
 Northamptonshire, NN16 8YJ

Wicksteed.co.uk





Trusted by communities since 1918, Wicksteed Leisure works closely with our valued customers to bring their ideas to life, providing sustainable, long-lasting solutions which meet the needs of the community.

As of 2023 the Wicksteed Group of companies includes **Playtime by Fawns, Russell Play** and is the exclusive distributor of **Berliner** and **Spielart** in the UK, allowing us to offer a diverse range of distinctive outdoor play equipment, showcasing remarkable imagination and creativity within the market.



## Our Services

- ★ UK playground manufacturer since 1918
- ★ Full maintenance & inspection service
- ★ Free site visit & design
- ★ Extensive guarantees
- ★ Bespoke play structures



[WICKSTEED.CO.UK](https://www.wicksteed.co.uk)

01536 517028    [sales@wicksteed.co.uk](mailto:sales@wicksteed.co.uk)



# COVENTRY HEARSALL GOLF CLUB'S SUCCESS WITH SIERRABLEN PLUS



Coventry Hearsall Golf Club's success with Sierrablen Plus from ICL.

ICL Controlled release fertiliser technology has helped to transform the fairways at Coventry Hearsall Golf Club.

Chris Low, the Course Manager at Coventry Hearsall Golf Club, has witnessed outstanding results since introducing ICL's Sierrablen Plus Spring & Summer CalMag 23-0-5 + 7CaO + 2.5MgO controlled release fertiliser (CRF) into the club's fairway programme.

## Decision to choose Sierrablen Plus

After seeing numerous positive posts on social media and conducting thorough research, Chris decided to incorporate the fertiliser into his turf management programme to help boost turf density and health.

The availability of larger 500kg bags, which are both cost-effective and easy to apply with a tractor-mounted spreader, further influenced his decision.

## Benefits of Controlled Release Fertilisers

Controlled release fertilisers (CRFs) are engineered to release nutrients gradually, ensuring more precise and targeted nutrient delivery to turfgrass.

This is achieved through a coating process that regulates nutrient release, guaranteeing that the turf receives essential nutrients at the right time and in the right quantities.

This method not only maximises the efficiency of nutrient uptake but also minimises waste and environmental impact. Sierrablen Plus CalMag 23-0-5 + 7CaO + 2.5MgO can be applied from early in the growing season through to summer, providing over five months of sustained healthy plant growth.

The controlled release of nitrogen supports continuous development, while added magnesium enhances the turf's green colour and calcium increases cell strength.

## Member and Visitor Praise

Since adopting Sierrablen Plus Spring & Summer CalMag 23-0-5 + 7CaO + 2.5MgO, the improvements in turf density at Coventry Hearsall Golf Club have been nothing short of remarkable.

The fairways have drawn praise from both members and visitors alike. "Members and guests have commented that the fairways are like carpets and the best they have ever been," says Chris.

The benefits of Sierrablen Plus extend beyond just aesthetics and playability. The fertiliser's controlled release technology provides sustained nutrition for over 5 months, reducing the need for frequent applications and thereby saving time and resources.

Additionally, the environmental benefits of using a controlled release fertiliser, such as reduced leaching and runoff, align with the club's commitment to sustainable practices.

Sierrablen Plus Spring & Summer CalMag has proven to be a transformative addition to the turf management programme at Coventry Hearsall Golf Club.

"We've seen a noticeable improvement in the turf's resilience and overall health, making our maintenance efforts more effective and efficient," Chris notes.

**Please contact ICL on 01473 237100 or visit [www.icl-growingolutions.uk](http://www.icl-growingolutions.uk) and [www.icl-growingolutions.ie](http://www.icl-growingolutions.ie) if you are in Ireland.**

**For more news and insightful views, you can follow ICL on Twitter @ICL\_Turf**



## Growing Skills in the Land-based & Environment Sector

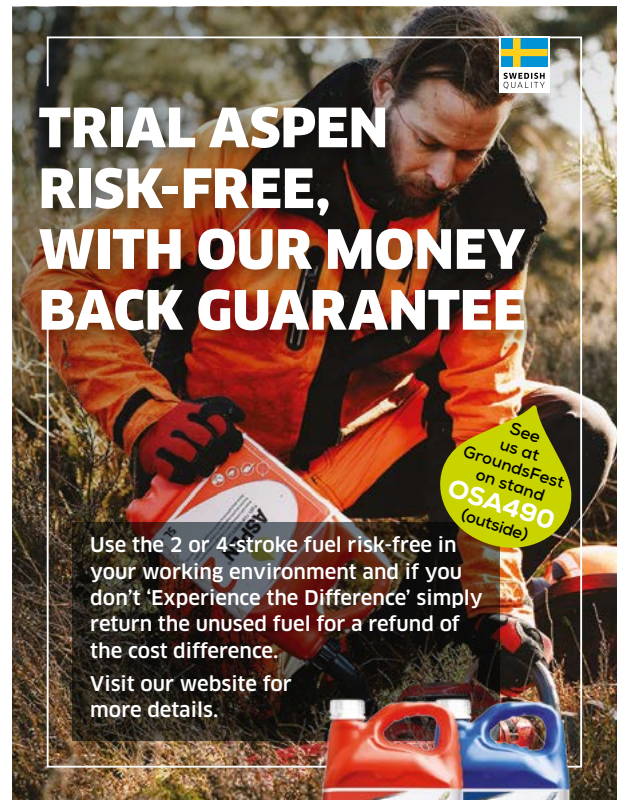
Lantra is an independent, awarding and accreditation body which exists to help the land-based and environment industries meet their skills needs. We develop and certify specialist training and qualifications for a range of industries, including landscaping and horticulture.



We will be at GroundsFest (stand 47 in Hall 1) and FutureScape (stand D77), so come and see us to have a chat about all things skills and training!

Lantra, Lantra House, Stoneleigh Park, Coventry, CV8 2LG  
T 02476 696996 E awards@lantra.co.uk

[www.lantra.co.uk](http://www.lantra.co.uk)



**ASPEN**<sup>®</sup>  
FUEL FOR PROFESSIONALS  
[www.aspenfuel.co.uk](http://www.aspenfuel.co.uk)



## PASSION FOR THE PROFESSION

Using our knowledge of contracting to supply professionals with the ultimate turf maintenance solutions.



FOR ALL TYPES OF SYNTHETIC SPORTS PITCH - WE HAVE A MACHINE TO SUIT YOUR NEEDS

[www.gkbmachines.com](http://www.gkbmachines.com) • [tom@gkbmachines.com](mailto:tom@gkbmachines.com) • 07495 883617





# JACOBSEN™ FULLY ELECTRIFIED FLEET TO PREPARE LE GOLF NATIONAL FOR INTERNATIONAL GAMES

Ransomes Jacobsen Ltd., a Textron Inc. company and the renowned manufacturer of Jacobsen™ high-quality turf maintenance equipment, is proud to announce its support of Le Golf National in Paris, the flagship facility of the French Golf Federation, as they work together to prepare this summer's world's stage for the biggest names in golf. This will be the first all-electric fleet of mowers to maintain an entire course in the world.

Jacobsen equipment has more than 100 years of experience producing the highest quality cut for golf, sports turf, and commercial use. To drive a more sustainable future for turf management initiatives, Jacobsen offers the same precision cut with powerful, long lithium battery life using its ELiTE series of equipment, activated by Samsung SDI technology. These fully electric units enable one to keep up with the needs of the course, and maintain a cleaner, fresher environment without hydraulics, to minimize the risk of spills or tailpipe emissions. This

results in a quieter course for golfers, without the addition of harmful chemicals to the land, air and water surrounding them.

"We could not be more excited to bring this groundbreaking technology to the world," said Simon Rainger, Vice President, Turf for Textron Specialized Vehicles. "This relationship aligns perfectly with our mission to provide superintendents and golfers with exceptional experiences, and we look forward to showcasing our commitment to creating low maintenance and greener solutions for participants and fans on the world stage."

Jacobsen, with the addition of Pace Technology, is the answer that the world has been waiting for when it comes to golf course maintenance. The Pace Technology systems in place allow Le Golf National to know when, where and exactly what needs to be tended to on the courses at a given moment through a centralized process. Pace Technology

can be accessed from any device and features real-time tracking and task management to maximize the effectiveness of your operation. Users can track and measure the power output per hole of the machines to maximize their performance and develop a bespoke picture of how they work on the course. While this is the first facility to go all electric, Ransomes Jacobsen is committed to fully electrifying golf and sports turf facilities across the globe in the years to come.



Follow along as we prepare for the summer games on Instagram, X and Facebook to stay up-to-date on the latest news, highlights and updates during the most anticipated sporting events of the year.

# TIDY BY NAME, TIDY BY NATURE WITH LATEST REDEXIM DELIVERY AT CRAIGIELAW GOLF CLUB

A Turf Tidy 3000 has become the latest addition to a rapidly expanding Redexim fleet at Craighelaw Golf Club. Delivered with both a flail and scarifier shaft in April 2024, the Turf Tidy is set to deliver effective fairway scarification and rough management at the East Lothian venue.

Described as 'a golfers paradise', the 18-hole Championship Links course is one of 22 which make up Scotland's Golf Coast. In charge of the maintenance alongside a team of six is Head Greenkeeper Paul Hay. "We had a machine for scarification and cutting the rough but that wasn't giving us the results we wanted so we got in touch with Henderson Grass Machinery who, along with Allen Whellans at Redexim, gave us a demonstration of the Turf Tidy" he explains. "From the off, it was impressive - the fully floating head handled cut and collection on our undulating rough areas really well. In addition, we could see how effective the unit would be for scarification of the fairways, leaving a tidy finish and bringing the surfaces back into play swiftly."

"Since its delivery, we've scarified a couple of areas on selected fairways to remove thatch and lateral growth with fantastic, clean results. Come the winter, we're already planning to use the Turf Tidy to cut back the roughs, taking out some of the density and removing the unwanted vegetation which will bring multiple benefits to both the course and the players alike" Paul adds.



The Turf Tidy joins a Redexim Multiseeder 1200 and Verti-Drain 7316 on Craighelaw's fleet, both also installed by Henderson's over recent years. "The Multiseeder was a fantastic purchase! We're into our third year with this machine which is used on the greens, tees, approaches and even some parts of the fairways. It's an incredibly versatile dimple seeder, which we can quickly and easily adjust to suit ground conditions or seed type. We're currently working to incorporate more fescue into our playing surfaces so are utilising the Multiseeder with a single roller which works perfectly for us."

"The delivery of the Verti-Drain® 7316 was incredibly timely, arriving ahead of the winter meaning we could get a pass in on the tees, greens and approaches before the worst of the weather arrived." Paul concludes, "We've got to know what to expect with the Redexim equipment. Everything we have is reliable, versatile and is backed up with brilliant support from both the dealer and Redexim directly. We will certainly be looking to add more machines in the future."

+44 (0)1428 661222  
[www.redexim.com](http://www.redexim.com)



# REVOLUTIONIZE YOUR LAWN CARE:

## MEET THE MAMMOTION LUBA 2 AWD SERIES AND YUKA SERIES PERIMETER WIRE-FREE ROBOT LAWN MOWERS

### LUBA 2 AWD Series Perimeter Wire Free Robot Lawn Mower - The Trusted Choice for Large or Steep Lawns

LUBA 2 AWD Series is the only perimeter wire-free residential robot lawn mower that can deliver long-term, stable, and flawless performance on large or complex lawns.

Through a one time setup via app or voice control, LUBA 2 AWD Series offers customized cutting heights, mowing patterns, and schedules for multi-zone lawns. It utilizes proprietary algorithms to calculate the optimal route and dual-cutting-disc ensuring mowing efficiency, also features auto-recharging, obstacle avoidance, smart anti-theft, and yard monitoring. It truly achieves labor-free, 24/7 lawn maintenance.

#### Key Features:

- Mow lawns up to 10,000m<sup>2</sup>
- All-Wheel-Drive for up to 80% (38°) slope. Easy conquer potholes and complex terrains
- 3D Vision & RTK Fusion-mapping system for precise navigation
- Easy and quick setup with no perimeter wire
- Multi-zone management for up to 60 zones & no-go-zone setting
- APP & Voice control with Alexa and Google Home
- Lawn printing technology provides rich mowing patterns and custom designs for your lawn

### YUKA Series 3D Vision Lawn Sweeping Mower - Designed for Exquisite Lawn

YUKA Series is the first and only robot lawn mower that can collect and dispose of fallen leaves and grass clippings automatically. With its advanced 3D Fusion Mapping System, YUKA Series doesn't require perimeter wires

and can be quickly started within 18 minutes. It offers customized mowing modes, patterns, and schedules through a user-friendly app or voice control, and dual-cutting-disc for efficient cutting. YUKA's intelligent algorithms plan optimal mowing and cleaning paths and provide features like automatic recharging, theft prevention, and yard monitoring.

#### Key Features:

- Self-emptying Tech for up to 100 Sweeping Zones
- No Perimeter Wire for Lawns up to 2000m<sup>2</sup>
- 3D Vision Navigation & Mow Under Trees
- Multi-zone Management for up to 20 Mowing Zones
- Dynamic Obstacle Avoidance for Recognizing 100+ Objects
- Efficient Carpet-Like Cutting
- Intelligent Security and GPS Tracking
- Lawn printing technology



# Smart Yards Start Here



## Contact Us :

**Become A Distributor:** [distributor@mammotion.com](mailto:distributor@mammotion.com)

**Marketing & PR:** [marketing@mammotion.com](mailto:marketing@mammotion.com)

**Customer Support:** [support@mammotion.com](mailto:support@mammotion.com)

**Explore Jobs Openings:** [career@mammotion.com](mailto:career@mammotion.com)

## Follow us on :



Website



Facebook



YouTube



LinkedIn

## About MAMMOTION :

MAMMOTION is dedicated to cultivating an intelligent and high-quality eco-friendly outdoor lifestyle through innovative robotic solutions. Our mission commences with revolutionizing robot lawn mowers for both professionals and consumers, paving the way for a more sustainable and efficient outdoor experience.



# INFINICUT® STRENGTHEN SUPPORT IN KEY COUNTIES WITH APPOINTMENT OF WILDWOOD MACHINERY

INFINICUT® are pleased to announce the appointment of Wildwood Machinery as a new authorised dealer for Hampshire, Sussex, Dorset, Berkshire, Surrey, London and the surrounding areas. Established in 2022, Wildwood Machinery have quickly established themselves as a leading provider for sales and servicing across southern England. Their extended portfolio will now include the full TMSYSTEM™ cassette range and INFINICUT® cylinder and rotary mowers, from 12th July 2024.

Under the management of James Bastian, Wildwood Machinery has grown rapidly since launching in 2022. James has over 30 years of sector experience, including many years as the managing director

of East Horton Golf Club, which he has utilised to understand the exacting needs and requirements of those working in the professional turfcare industry. From their depot in Winchester, James and the team offer sales, support and servicing for customers including local authorities, golf clubs, National Trust properties, schools and community clubs as well as Premiership football clubs and other elite sporting venues.

“INFINICUT® and TMSYSTEM™ are the choice of many top-flight professional sports clubs around the world, which fits perfectly with our aspiration to provide the very best in groundcare equipment,” says Wildwood Machinery managing director James Bastian. “They will

enhance our existing portfolio of machinery, giving our customers access to a high-quality range of products that can really take their surface standards to the next level.”

“In Wildwood Machinery I’m confident we’ve found a dealer partner who will offer a service to match INFINICUT’s quality of cut,” adds Mark Clifford-Kennedy, INFINICUT® Territory Sales Manager for the south of England. “We look forward to strengthening our network with this new machinery servicing, repairs and sales partnership across these key counties.”

+44 (0)114 2122 200  
[infinicut.com](http://infinicut.com)



# KIBWORTH GOLF CLUB THRIVES WITH DSV EUROGRASS SOLUTIONS



Martin Anderson became Course Manager at Kibworth Golf Club in 2019, aiming to improve the course in Leicestershire. With a strong connection to the club, Martin's journey from apprentice to leader shows his dedication to its success. One significant change he made was using DSV EuroGrass seed mixtures, which greatly improved various areas of the course.

Martin's connection with Kibworth runs deep, tracing back to his earliest memories. "I took my first ever steps here at a New Years Eve party," he reminisces. Little did he know then that Kibworth would become not just a backdrop to his life, but a stage for his growth and passion.

From those first toddler steps to his formative years as an apprentice, Martin's bond with Kibworth only strengthened. "My mum and dad were members, and I was a junior member before becoming an apprentice," he shares, illustrating the club's integral role in shaping

his journey. It was here that he honed his skills, learned the art of greenkeeping, and even found love, meeting his wife in the clubhouse where she worked as a waitress.

In 2019, Martin landed the position of Course Manager, a role that held both challenge and promise. Armed with a vision to elevate standards and restore Kibworth's reputation, Martin embarked on a journey of transformation. "Some areas of the course needed attention," he recalls, "but with a new committee and investments in equipment and products, we set out to make a difference."

Among the pivotal changes was the introduction of DSV EuroGrass seed mixtures, a decision born out of research and collaboration with trusted partners like Rhys Norville from ReGen Amenity. "Rhys put us in the direction of DSV," Martin explains, emphasising the importance of building relationships with reliable suppliers. The trial of DSV's Dual Use blend delivered promising results, paving the way for its integration into Kibworth's approach.

For the fairways and tees, Martin turned to DSV's 3-way rye mix, renowned for its quick establishment, vibrant colour, and disease resistance. The impact was profound. "The strike rate was really good," Martin reflects, "and it keeps coverage throughout the season, even going into winter." Remarkably, this season marked the first time in years that the tees remained disease-free—a testament to the efficacy of DSV's seed.



"We have not had to put a fungicide on the tees at all," adds Martin. "That is extremely remarkable when you consider that it has been so wet and warm - perfect conditions for disease to thrive."

With its proven track record of performance, reliability, and innovation, DSV's seed mixtures instil confidence with every application, ensuring that the areas it is applied at Kibworth remain vibrant and disease-free year-round. "I am confident every time we apply DSV seeds. I know it is going to come through and deliver good results," affirms Martin.

Backed by decades of research and expertise, DSV's seed mixtures continue to redefine standards of quality and performance, offering greenkeepers and course managers like Martin the tools they need to achieve remarkable results.

As Martin's journey at Kibworth Golf Club continues, the future looks brighter than ever. With products like DSV EuroGrass seed mixtures leading the charge, the club is poised for continued success and excellence in greenkeeping practices.

[www.dsv-uk.co.uk](http://www.dsv-uk.co.uk)

# PICTORIAL MEADOWS AND THE GREENING OF SHEFFIELD: A GREY TO GREEN SUDS SUCCESS STORY



Sheffield's Grey to Green scheme stands as the UK's largest retrofit Sustainable Urban Drainage System (SuDS) project and inner-city 'Green Street' - a testament to innovative urban renewal. This ambitious initiative, developed in partnership with Sheffield City Council, reimagined a 1.6km stretch of dual carriageway reduced from four lanes to two, following the construction of an outer ring road.

Simon Ogden, who was then Head of City Regeneration at Sheffield City Council, conceived the idea of a revolutionary landscape scheme as part of the city's response to the catastrophic 2007 floods. Seeking a revolutionary approach to landscape design, Ogden enlisted the expertise of Professor Nigel Dunnett from the University of Sheffield's Department of Landscape Architecture and founder of Pictorial Meadows.

## Mitigating Flood Risk

The Grey to Green initiative primarily focused on managing surface water by reducing runoff, treating water through rain gardens and bioswales, and mitigating flood risks near the River Don. However, its vision extended beyond these goals. The project increased urban biodiversity, protected pedestrians from air pollution, achieved urban cooling through tree planting, and addressed



water contamination. Additionally, green spaces within the project promoted health and wellbeing, offering residents beautiful areas for recreation. The transformation also spurred investment and economic benefits by revitalising the area and encouraging further development. Wider pavements and inspirational landscapes have significantly improved the pedestrian experience and community spaces.

## An Integrated Planting Solution

Pictorial Meadows has been involved with the project since its inception in 2014 to its ninth growing season in 2024. The original planting scheme was developed by Pictorial Meadows' founder, Professor Nigel Dunnett, with input from Landscape Architect Zac Tudor. The visually striking planting scheme included a mix of native and non-native species, designed to ensure colourful, resilient meadows with multi-layered ecological benefits. The installation of Phase 2 of the planting scheme was meticulously managed by Pictorial Meadows, coordinating closely with contractors and Sheffield City Council.

## Specialist Substrate

Core to the success of the project was the specification of the specialist substrate developed and supplied by Pictorial Meadows. The substrate was engineered to govern water

infiltration and retention to meet civil engineering specifications, whilst creating optimal conditions for a wide range of ornamental plants.

## Sustaining Success

Maintenance, often an overlooked aspect, has been vital to the project's sustainability. Pictorial Meadows' ongoing commitment to skilled and knowledgeable maintenance ensures the thriving long-term management of these ecosystems. Entering its ninth year, the project continues to improve Sheffield's resilience to heavy rainfall and flooding, displaying the transformative power of sustainable and biodiverse urban landscapes.

As part of The Green Estate Community Interest Company, Pictorial Meadows has been creating adaptive and resilient urban green spaces for over twenty years. Our mission has always been to create more sustainable, resilient and liveable cities by integrating nature into urban planning and design.



**Contact us to learn more about our integrated planting solution for SuDS schemes that encompasses the supply of substrates, plants, meadow turf and skilled labour.**

[pictorialmeadows.co.uk](http://pictorialmeadows.co.uk)  
Photos © Alastair Johnstone  
(Climate Visuals)

# Pictorial Meadows

## Unique & Resilient Perennial Meadows

Perennial mixes expertly designed to deliver beauty and biodiversity

Water's Edge



Moody Blues



Cottage Garden



### Explore our new Seed Brochure

For detailed information about each seed mix, including:

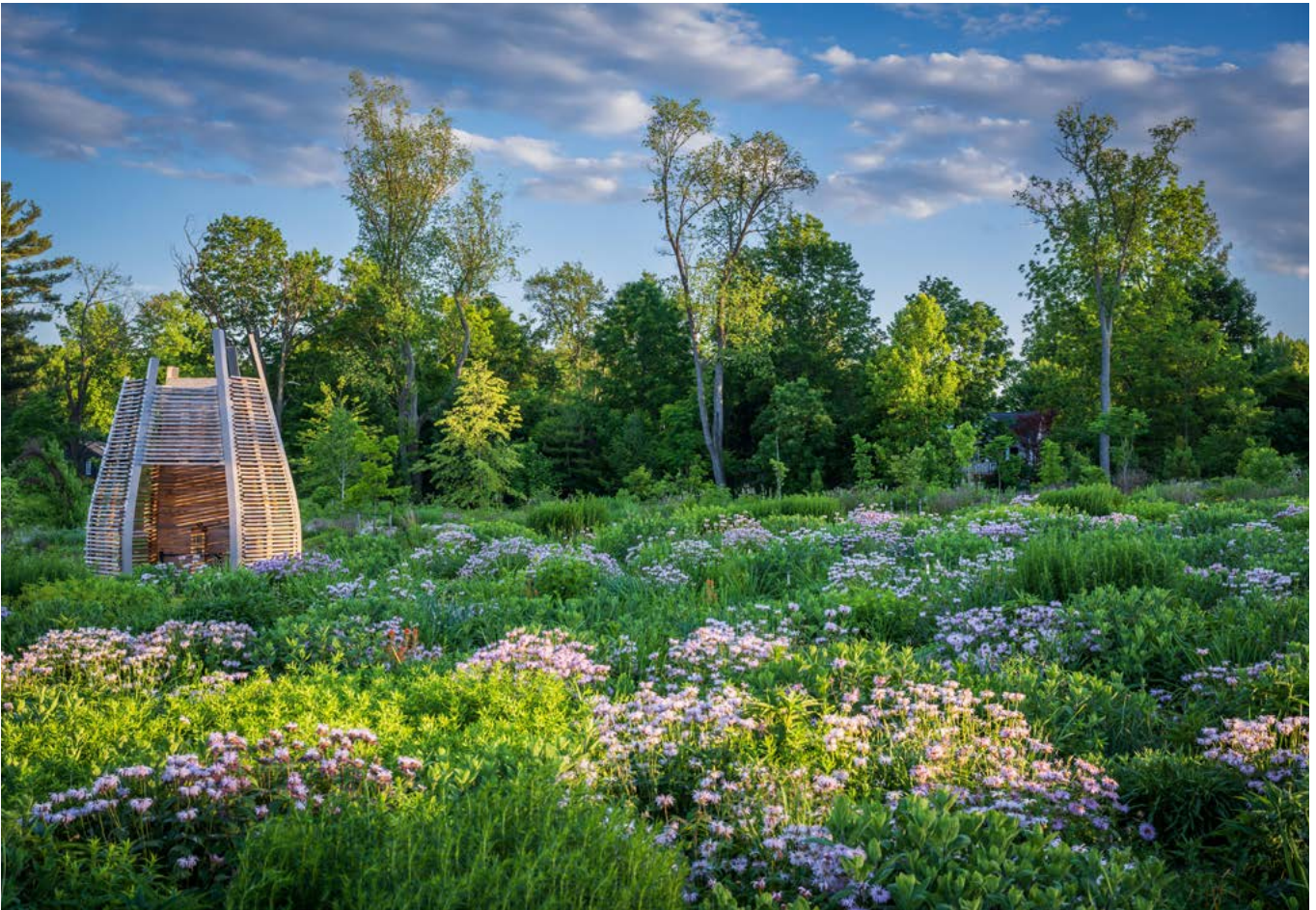
- Plant lists
- Flowering details
- Recommended usage
- Shade/sun tolerance
- Installation and maintenance tips



the  
green  
estate

COMMUNITY  
INTEREST  
COMPANY

pictorialmeadows.co.uk  
0114 267 7635



# POLLINATOR AND BIRD GARDEN, DESIGNED BY DIDIER DESIGN STUDIO, NAMED WINNER OF INTERNATIONAL SUSTAINABILITY AWARD

**Architizer recently announced the winners of the 2024 A+ Awards, the largest awards program focused on promoting and celebrating the year's best architecture.**

Didier Design Studio, a landscape architecture firm based in Fort Collins, Colorado, with expertise in all facets of design and planning,

from vision to completion, was selected as the 2024 Jury Winner in Architizer's Sustainable Landscape/Planning category for their project, "Where the Pollinators Are". This category awards projects that incorporate sustainable systems and materials, and which follow best practices pertaining to ethical design, construction, and operation.

The Jury-winning project is the Pollinator and Bird Garden, located at The Arboretum at Penn State in State College, Pennsylvania. The project is a direct extension of an ongoing research agenda to understand and explain the recent decreases in pollinator and bird populations across the world.

Harland Patch, director of pollinator programming at the Arboretum, and assistant research professor for the Penn State College of Agricultural Sciences, said, "The garden is unique in that it puts together habitat design and design that is accessible and beautiful to humans with a very diverse mix of plants, many of which you will not see in any other garden."

Understanding and reversing pollinator species disappearances around the world is critical to the

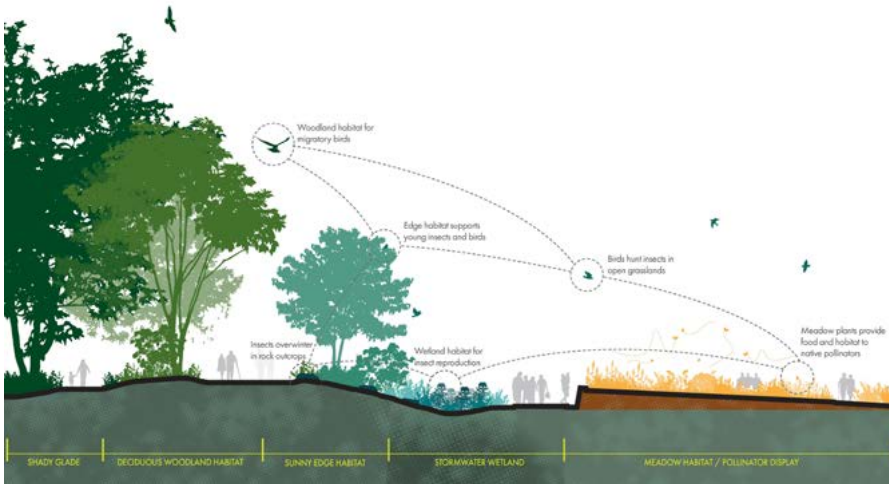
continuation of human existence. In the face of environmental and economic disaster, many are left with a sense of powerless inevitability. In response, creative director of Didier Design Studio and lead designer of the Garden, Emmanuel Didier said, "The Pollinator and Bird Garden connects people with the issue of pollinator decline in specific, tangible ways, placing science in the forefront in the context of climate change. There is hope in that action."

This agenda unfolds across the 3.5-acre garden and realizes three interrelated goals: to directly convey and interpret scientific research being conducted on site, to offer an engaging place for people to learn about pollinator and bird habitats, and to inspire visitors to implement urban habitats within their own private gardens. This latter goal has the potential to exponentially impact the spread of healthier ecological networks across already-developed landscapes.



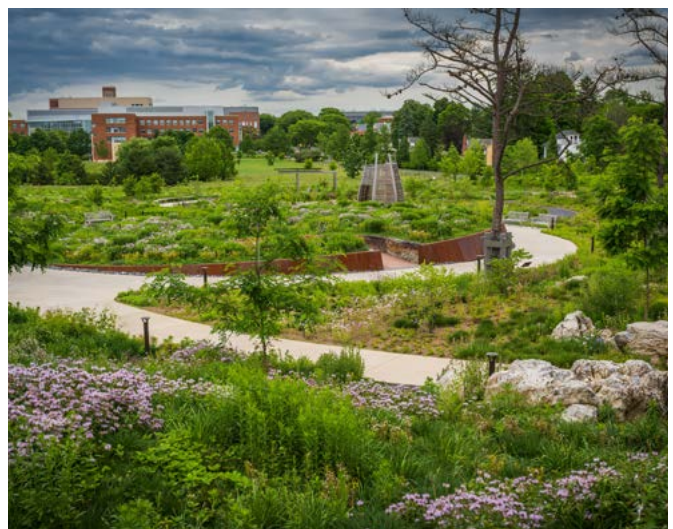
To realize these goals, Didier assembled a team of design experts and framed the project as a collaborative journey with research staff at The Center for Pollinator Research at Penn State.

Grounded in years of research, the design approach transformed a level pasture to create a diverse set of ecological conditions that could support the wide range of plant species necessary to entice birds and pollinators throughout the seasons. The ground plane was sculpted into an activated terrain, forming a mosaic of seven soil conditions and pollinator-attuned mulches



prescribed to create novel land typologies, from swales lined with clay, to loamy soils for wet meadows, and well-draining aggregate soils for dry conditions.

The sculpted terrain fosters a wide array of microclimates and conditions across the site, creating a diversity of ecotones and habitats through which pathways and trails are carefully choreographed to immerse visitors into the world of pollinators.



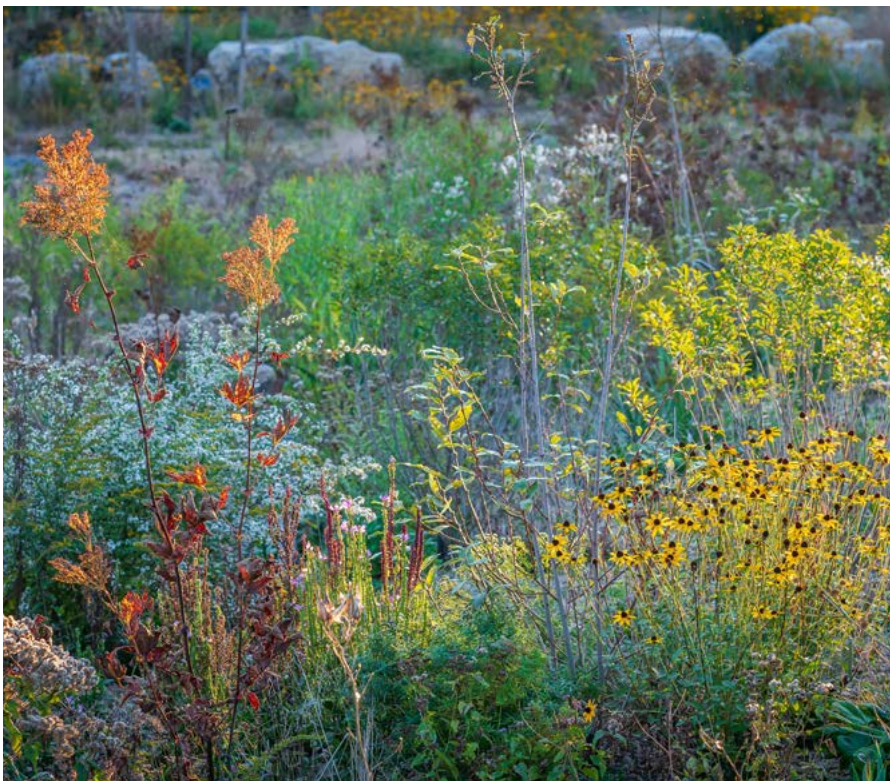


Of this curated experience, Didier said, “We often hear about the alarming amount of species of pollinators disappearing from OUR world today... but I think this garden offers a unique opportunity: to flip the experience, from pollinators in the world of people, to people in the world of pollinators. This garden is an agency in transforming this fundamental relationship: our position in the world today.”

In its first year, the Pollinator and Bird Garden showcased 340 hardy plant taxa, of which 78% were native species or selections thereof. Plants

were targeted toward species that would provide maximum life-cycle support for native insects - particularly pollinators - and the region’s resident and migratory birds. Today, the garden brims with life, inspiring care and action toward fostering habitat at individual and collective scales.

The Pollinator and Bird Garden was also a 2024 World Landscape Architecture Award Shortlist selection and, in 2022, won the American Society of Landscape Architecture - Colorado Honor Award.



**Technical sheet**

**Name:** Pollinator and Bird Garden

**Location:** State College, Pennsylvania

**Client:** The Arboretum at Penn State

**Landscape Architect:** Didier Design Studio, Lead Designer

**Collaborators:**

Planting Design: Phyto Studio  
Architect: Lake|Flato Architects

Research: The Arboretum at Penn State and the Center for Pollinator Research (Shari Edelson, Harland Patch, Casey Sclar, Kim Steiner)

Civil Engineer: Herbert, Rowland & Grubic, Inc. - HRG

Electrical Engineer: Barton Associates Inc.,

Builder: Leonard S. Fiore, Inc.

Irrigation: Hydro Designs

**Budget:** \$6.5 million

**Size:** 3.5 acres

**Project Completion Date:** 2021

**Photographer:** Rob Cardillo



**About Didier Design Studio**

Didier Design Studio is a landscape architecture firm with expertise in all facets of design and planning, from vision to completion.

The Studio shapes artful interventions that are purposeful and rooted in place. They practice design as a transformative process grounded in research and collaboration, and they measure success in terms of cultural relevance, ecological performance, and beauty.

[www.didierdesignstudio.com](http://www.didierdesignstudio.com)



# PREPARING PONDS AND LAKES FOR AUTUMN: THE IMPORTANCE OF AERATION

As the summer heat dissipates and autumn arrives, ponds and lakes go through subtle but quite significant changes. While natural and cyclical, these changes can profoundly impact your water and, if untreated, cause potential disturbances to its ecosystem.

For owners of lakes and ponds, now is the time to take proactive, preventative measures to maintain (or, indeed, improve) water quality.

The first thing you need to consider is thermal stratification - a natural process that occurs during warm weather. As the sun heats the surface of the water body, cooler water, which is more dense, settles and warm water rises, creating discrete layers.

As temperatures drop in autumn, the stratification effect weakens and layers mix again via a process called turnover.

When oxygen-depleted water mixes with oxygen-rich water, overall water oxygen levels can suddenly fall, resulting in the death of fish and

other aquatic organisms. In these conditions, phosphorus, ammonium, and some metals are also released from sediment, which will increase algae production.

Resulting algal blooms don't just reduce water clarity, they also absorb available oxygen and prevent plant life from growing, causing the death of wildlife and a more pressing biomass issue.

So, what steps can pond and lake owners take to prevent these problems? Aeration - the process of maintaining or increasing oxygen levels in water.

Aeration systems work by circulating water, breaking up thermal stratification, and ensuring oxygen is evenly distributed. This prevents sudden oxygen depletion, which keeps plants and aquatic life healthy, while also preventing other issues like sludge build-up and bad odours.

Oxygen, moreover, is used by ponds and lakes to remove excess nutrients through aerobic bacteria, which

consume the nitrogen, phosphorus, and nutrients that algae would otherwise thrive on.

If you need specialist guidance, lake and pond management experts Reesink Hydro-Scapes provide technical advice, symptoms check support, and, through its extensive dealer network, distribute Otterbine aerators.

For over 70 years, Otterbine have pioneered industry-leading aeration systems. Reliable and efficient, their technology promotes water circulation and oxygenation - both critical if you want to protect the health of your water bodies.

**By investing in a new system, or upgrading your old one, you can enter the autumn season with confidence.**

**To learn more about Otterbine and how aeration can improve the quality of your water, give Reesink Hydro-Scapes a call today on 01480 226948**



Effective water solutions  
for all landscapes

# BRING THE NIGHT TO LIFE WITH COLOUR



## Bring your fountain to life at night with Otterbine's Lighting Systems.

Introducing MIDI-RGBW Lights for Otterbine's Fountain Glo™. These 9-watt light sets offer a cost-effective way to add rich colour to your fountains. Pairs perfectly with Otterbine's 1-5hp aerating fountains to give lavish, vibrant light to accentuate any pattern with a variety of coloured displays and sequences. Takes your venue from day to night in style.



[reesink-hydrosapes.co.uk](http://reesink-hydrosapes.co.uk)

# ADVANCED KFS SPECIAL VEHICLES TIP & GO

## TIPPING DROPSIDE: THE DO-ALL FULLY ELECTRIC DROPSIDE VEHICLE



AKFS is a distinguished leader in commercial vehicle design and construction, consistently maintaining the number one position in the industry. Our well-earned reputation for excellence underscores our dedication to quality, innovation, and our “Built Without Compromise” ethos.

For many years, AKFS has set the benchmark in commercial vehicle innovation, design, and craftsmanship. As pioneers in our field, we have continually introduced

advanced solutions tailored to a variety of sectors and industries. A highlight of our remarkable lineup is the fully electric Tip & Go® Tipping Dropside vehicle - a prime example of AKFS’s commitment to both innovation and functionality. This groundbreaking vehicle is meticulously designed to meet the unique needs of urban and commercial users with unparalleled efficiency.

Based on the sturdy MAXUS eDELIVER 9 EV chassis, our Tip & Go®

conversion sets a new benchmark for reliability, performance, and efficiency. The Tip & Go® design emphasises overall functionality, making it ideal for urban landscaping and grounds maintenance tasks. It’s the perfect vehicle for maintaining outdoor spaces, ensuring they remain clean, tidy, and safe. The Tip & Go cargo area is especially spacious, and with the optional caged sides, it becomes an excellent choice for winter refuse collection.

Our focus extends beyond the vehicle’s innovative design to prioritise the well-being of its operators, incorporating numerous standard features to ensure their safety and comfort.

Customisation is integral to our approach at AKFS. The electric Tip & Go® Tipping Dropside vehicle can be fully tailored at the time of order, offering a bespoke build that meets the precise specifications and demands of the end user. Available options include advanced tool storage solutions, integrated winch systems, LED work lights, and a comprehensive visibility package that features 360-degree amber strobes, and LED lightbars. Additionally, we have developed a completely standalone auxiliary power pack that can be used within any of our electric commercial vehicle range.



**Contact our dedicated Commercial Vehicle Specialists today at 01246 250022 to learn more about our innovative range of Electric Vehicles and how they can transform your operations.**

# AKFS Ltd

## EV Tip & Go Tipping Dropside



Scan me



Quote LAUD69 to our Product Specialists and receive a free "Cab Comfort Pack" on all orders processed before C.o.B 30/11/2024



01246 250022  
[www.advanced-kfs.co.uk](http://www.advanced-kfs.co.uk)



### Built Without Compromise



The team who made the Nature School possible look on the new Nature School from the deck in Cleator Moor, Cumbria.

# AN ‘OVERGROWN WASTELAND’ HAS BEEN TRANSFORMED INTO A FLOURISHING COMMUNITY LEARNING ENVIRONMENT

Providing a space for members of the community to connect, Nature School, an outdoor learning environment, has opened in Cleator Moor, Cumbria, after a collaborative landscaping effort.

Where there were once weeds, litter, and abandoned bicycles, there is now an outdoor classroom, fruit trees, raised beds, a fire pit, and a wildlife pond. These make up the new Nature School, available for community groups to book and use all year round.

From children in local nurseries to engineering apprentices and knit and natter groups, Nature School is designed to be accessible to all, regardless of age and ability.

The initiative, run by and located at St Patrick’s Primary School and supported by the Sellafield Ltd Engineering Centre of Excellence, has been made possible thanks to Arborscape Environmental Services, Nexus, The Decommissioning Alliance (TDA), ADAPT, and Integrated Decommissioning Solutions (IDS).

Using horticultural and landscaping expertise from Arborscape, support from the supply chain and a shared vision with St Patrick’s Primary School where the land is based, the area has evolved into a purpose-built community space that can be enjoyed for years to come.

Claire O’Connor, Socio-Economic Lead at the Sellafield Engineering Centre of Excellence, said: “What started as a conversation about potential new summer projects, has evolved into something that all involved are incredibly proud of.

“Working alongside Rob Reid from St Patrick’s School, and seeing the generosity from the supply chain, has demonstrated the importance of, and passion for, community in this region.

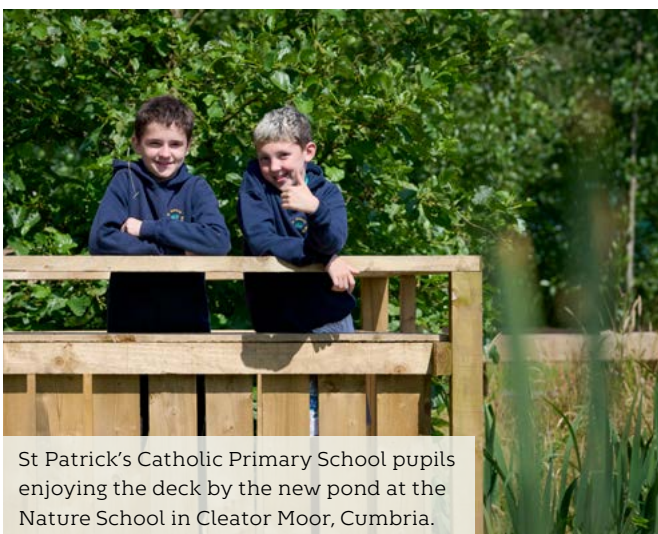
“There’s a big focus on STEM resources in the region, and while the community benefits from the incredible technology developed here, the positive effects of enjoying and embracing nature are endless. The Nature School is an investment in the best interests of our community, environment, and future.

“We couldn’t have achieved such an impressive result without the vision and expertise of Arborscape, who blew us all away with their extensive knowledge of the natural world. It is thanks to Sam Pagett (Business Owner at Arborscape) and his team that the space is home to native plants that are suited to the landscape, and the surrounding trees are healthy and free from diseases. Arborscape also created bird and insect boxes with the surplus wood which will be perfect for attracting wildlife.”

Rob Reid said: “The area where the Nature School now sits was an overgrown patch of wasteland, much of which was too boggy to use. As a school, we identified the need to provide usable outdoor learning space to enhance the curriculum and pupil well-being. We also wanted to provide a space that could be used by the wider community groups in the area. Working with the school, Arborscape, Sellafield, and the supply chain, we have delivered a truly one-of-a-kind resource for the school and local groups.



Students from St Patrick’s Primary School join in the landscaping in front of the new outdoor classroom at the Nature School in Cleator Moor.



St Patrick’s Catholic Primary School pupils enjoying the deck by the new pond at the Nature School in Cleator Moor, Cumbria.



St Patrick’s Primary School students get involved with gardening on the new Nature School site in Cleator Moor.



Beth Mahone from the team at the Engineering Centre of Excellence in Cleator Moor joins the St Patrick's Catholic Primary School students at the Nature School around the fire.



Staff from Sellafield Ltd, Arborspace, and St Patrick's Primary School at the entrance of the new Nature School in Cleator Moor.



Sam Pagett from Arborspace chats to one of the Engineers from the Sellafield Engineering Centre of Excellence in front of the new birdhouses at the Nature School in Cleator Moor, Cumbria.

Laurence Sutton, nine, in Year 4 from Cleator, said: "We have a Nature Club now at school and we came bug hunting. There were a lot hidden under things!

"It's a great improvement from what it was before connecting children and adults to nature. It's helping us learn about the environment around us. Using the learning centre more next year is going to be awesome."

Sam Pagett said: "We were delighted to have the opportunity to work with Sellafield and St Patrick's School to deliver the Nature School project. We have focused on maximising site benefits throughout, combining natural spaces, edible planting features, and purpose-built educational centres within one accessible site.

"It has only been made possible to achieve the outcome through the vision of Sellafield, who immediately identified the project as being one of value to the people of Cleator Moor.

"While the staff and children at St Patrick's have already been spending time in the Nature School, we can't wait to get groups from other schools and the wider community in and using the facilities on site, eating from the orchard, caring for the garden and generally spending time in nature."

Lois Hodgson, 11, a Year 6 leaver from Wath Brow said: "I'm gutted to be leaving school now! There were just loads of weeds and nettles here before. It looks amazing now.

"I really like the Nature School because it helps teach the younger children about nature and discover new things. We did an art lesson out here where we traced different parts of the Nature School, coloured it in and put it in our art books.

"I hope I get to come back here. Because it is for the whole community I think I will!"

"Working with St Patrick's has facilitated the development of a site specifically tailored towards educational requirements, and it will hopefully serve as a model for similar future projects. We look forward to seeing the planting established, and the site evolve as the community uses the space. A big thanks from all of us at Arborscape Environmental Services to everyone who helped bring the nature school to life!"

Kevin Rishworth, Engineering Lead at the Sellafield Engineering Centre of Excellence, said: "It's great to see the children from St Patrick's enjoy such an inspiring space. We are looking forward to our Sprint teams' using the space to inspire creative thinking and produce world-class engineering solutions that develop from having the opportunity to work in a space like the Nature School."



**The Nature School is available to book through St Patrick's Primary School, community groups can contact the school at [natureschool@st-patrick-cleatormoor.cumbria.sch.uk](mailto:natureschool@st-patrick-cleatormoor.cumbria.sch.uk), during school term times.**

**The space can also be booked by calling 01946 810513.**

# TRANSFORMING SPACES WITH UNRIVALLED EXPERTISE SINCE 1963



At Jack Moody Landscaping Ltd, we believe that exceptional landscapes don't just happen - they are the product of over six decades of unwavering dedication, planning and a commitment to excellence.

Established in 1963, Jack Moody Landscaping Ltd has grown into a cornerstone of the UK's landscaping industry. Our journey began with a profound mission that remains today: to provide expert commercial landscaping services to a close client base, growing and sourcing the best stock and offering sustainable solutions. Today, that mission continues to guide us as we collaborate as a trusted partner to create and deliver landscaping solutions that consistently exceed expectations.

Our longevity in the industry has allowed us to refine our craft, develop deep-rooted expertise and build an impressive portfolio of successful projects. Among our standout achievements is

the complete transformation of the exterior landscape for a £100 million specialist facility in Birmingham. With a blend of hard and soft landscaping, the result of this project not only enhanced the aesthetic appeal of the hospital but also created a serene and welcoming environment for patients, staff and visitors alike.

What sets us apart is not just our extensive experience, but our ability to integrate value engineering, expert installation and ongoing maintenance into every project we undertake. We don't just create landscapes; we craft environments that resonate with beauty, functionality and sustainability.

Central to our success is our horticultural expertise. Nestled within the grounds of Hollybush Farm in Staffordshire lies our thriving 10-acre JM nursery. Here, our team of specialist horticulturalists nurture and cultivate a diverse range of plants,

shrubs and trees using 100% peat-free production. This vast collection not only enhances the projects we work on but also offers our client and trade customers exclusive access to premium plant varieties that elevate their landscapes above the rest.

Our dedication to quality extends beyond our nursery. At our Hollybush Farm headquarters, we proudly host one of the UK's largest independent garden centres, offering a diverse selection of plants and landscaping essentials.

What truly defines Jack Moody Landscaping Ltd, is our approach to client relationships. We believe in fostering partnerships built on open communication, transparency and collaboration. Our clients are not just customers, they are partners in a shared vision, and we are dedicated to ensuring their landscaping projects are delivered on time, within budget ensuring outstanding results.

With multiple awards and endorsements from industry-leading developers, Jack Moody Landscaping Ltd stands as a testament to the power of experience, proficiency and commitment. We invite you to join us in crafting landscapes that stand the test of time, leaving a legacy of beauty and functionality for generations to come.



[www.jackmoodygroup.co.uk](http://www.jackmoodygroup.co.uk)





**Jack Moody**  
GROUP

**Top 70**  
*Landscape & Maintenance Contractors*  
PRO LANDSCAPER  
MAGAZINE  
AWARD WINNERS

 **British Association of Landscape Industries**  
ACCREDITED

**Concept to creation**

**Growth to perfection**

[www.jackmoodygroup.co.uk](http://www.jackmoodygroup.co.uk)

[sales@jackmoodygroup.co.uk](mailto:sales@jackmoodygroup.co.uk)

01922417648

# CREEPERS NURSERY: INSIGHTS FROM A SURVEY OF 50 GARDEN DESIGNERS



Creepers Nursery took advantage of the SGD Spring Conference to gather insights from the garden designers present about current trends. In the survey involving 50 garden designers, the emerging trends in garden design reflect a strong shift towards sustainability, nature-centric layouts, and resilience against climate challenges. The results highlight a collective move towards more environmentally conscious and low-maintenance gardens that not only cater to aesthetic values but also prioritise ecological benefits.

## Key Trends in Modern Garden Design:

### 1. Naturalistic and Sustainable

**Approaches:** A significant number of designers are adopting a naturalistic approach, focusing on creating spaces that blend seamlessly with nature rather than competing with it. This includes using native plants, promoting biodiversity, and employing sustainable practices like water retention and low irrigation schemes.

### 2. Drought Resilience and Low Maintenance:

With changing climate conditions, there is a noticeable pivot towards drought-tolerant planting. Gardeners are increasingly favouring plants that require less water and maintenance, ensuring that gardens are both beautiful and resilient. This trend is closely tied with the concept of xeriscaping and the use of dry gardens and gravel gardens.

### 3. Reclaimed and Local Materials:

In line with the circular economy, there is a growing preference for using reclaimed materials and sourcing plants locally. This not only reduces the carbon footprint associated with transporting materials but also supports local ecosystems and economies.

### 4. Focus on Soil Health and Biodiversity:

Soil health is a cornerstone of sustainable gardening, with many designers emphasising the importance of nurturing soil to support diverse

planting. This approach supports more robust plant growth and a healthier garden ecosystem overall.

### 5. Designs Tailored to Client Needs and Site Specifics:

While the trend is decidedly green and naturalistic, designers also stress the importance of customising gardens to fit the specific needs and preferences of clients. This includes integrating elements like outdoor kitchens, urban courtyards, and even spaces designed for wildlife.

### 6. Innovative Use of Space and Plants:

From edibles mixed into ornamental gardens to bold, structured plantings that feature a mix of shrubs and perennials, designers are getting creative with how they use both plants and garden spaces. There is also a noticeable trend towards creating rain gardens and incorporating elements that attract and support local wildlife.

### 7. Aesthetic and Functional Blends:

The survey revealed a blend of traditional and contemporary styles, with a push towards modern designs that do not forsake the classic beauty of garden landscapes. This includes integrating modern elements like crushed materials for pathways with traditional cottage-style planting or Mediterranean-inspired designs.

The survey clearly shows that today's garden designers are not just creating spaces that are visually appealing but are deeply invested in the environmental impact and sustainability of their designs. As we move forward, these trends are likely to shape not just individual gardens but the broader landscape of urban and suburban environments, promoting a greener, more sustainable approach to living with nature.

## A LUXURY, “DOMESTIC STYLE” TOILET ANYWHERE IS NO “FAIRY TALE! NO MATTER HOW FAR FROM THE SEWAGE SYSTEM

Nobody wants the romance of a Glamping break to be spoiled by challenging and basic toilet arrangements. Let’s be honest, the majority of the population won’t welcome having to cover their Poo in sawdust, or being reminded of the chemical toilets at Glastonbury!

By their nature, many of the best Glamping sites are located some distance from mains drainage, meaning that a pleasant toilet experience might be difficult to provide!

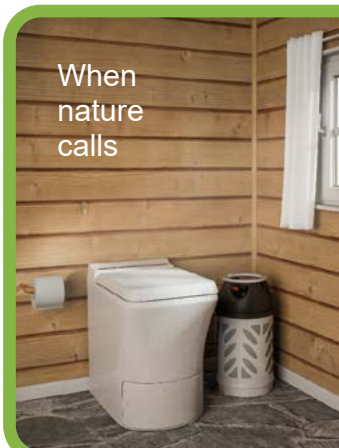
Thankfully, because there is now the Cinderella incineration toilet from Pump Technology Ltd, fairy tales can come true.

The Cinderella looks like a normal toilet, gives the user a clean, smell free experience and, critically, is extremely simple to operate. At the touch of a button all waste is removed from the toilet bowl leaving it clean and fresh for the next user.



The waste, which is collected via a consumable bowl liner, drops into the toilet’s incinerator where it is converted into a tiny amount of dry ash. This inert ash simply needs to be removed occasionally and disposed of in a normal waste bin, or simply scattered on the garden. The Cinderella can be powered either by a mains electric supply or bottle gas and requires no water for its operation. All this and not a magic wand in sight!

**Pump Technology Ltd**  
[www.cinderellauk.com](http://www.cinderellauk.com) | 0118 9821 555



**Cinderella®**  
 Incineration Toilets

0118 9821 555

- Ideal for static sites such as: - Garden rooms, huts or ‘glamping’.
- And mobile situations such as: - Canal and house boats, vehicles or mobile containers. LPG gas (Propane) or electric versions available.

[www.cinderellauk.com](http://www.cinderellauk.com)



## LANDSCAPING ASSET FINANCE CASE STUDY FEATURE

By Propel Finance

Propel equips leading Landscaping business to drive growth

Propel recently financed a cherry picker for a leading Landscaping business; supporting the customer to achieve their development ambitions. Following this purchase, Propel helped the customer secure twelve more deals towards a range of business critical assets.

### Feedback from the customer:

“We were initially referred to Propel as we required asset finance towards a cherry picker. We were impressed by the whole process, while the speed rate of securing the finance was very quick and efficient. The Propel team were outstanding; and the whole experience of dealing with them was excellent. We had so much confidence in Propel. It was a no brainer for us to return to them for further finance. They’ve since managed to help us purchase several other key assets such as woodchippers, cars, trucks and vans.”

### Maintain your advantage

To discuss how you could benefit from an asset finance solution designed around your business, call Propel’s specialist team on 01633 982922 or email [contact@propelfinance.co.uk](mailto:contact@propelfinance.co.uk).



## Cutting Edge Machinery and Vehicle Finance

for Groundskeeping & Landscaping Businesses

- Access the latest machinery and vehicles immediately
- No large upfront payment, preserving capital
- Boost your cash flow by spreading the costs over time
- Flexible finance solutions tailored to your seasonal cash flow requirements
- Fixed payments protect your business against inflation
- Fast decisions, so no delays to important new contracts

Propel is the fastest-growing asset finance company in the UK; and has a track record of over 25 years in supporting Groundskeeping businesses in achieving their growth ambitions.

Talk to Propel’s asset finance experts today for fast and flexible equipment and vehicle finance solutions designed to power your growth.

Finance is subject to status. Terms and Conditions Apply. Propel acts as a lender or a credit broker for business customers only.

[contact@propelfinance.co.uk](mailto:contact@propelfinance.co.uk)

01633 982 922

[www.propelfinance.co.uk](http://www.propelfinance.co.uk)



# 2024 NATIONAL LANDSCAPE AWARDS: GET YOUR TICKETS NOW!

The countdown has begun for the most prestigious event in the landscaping industry: the 2024 National Landscape Awards. Scheduled for 6 December 2024, this year's event promises to be a spectacular celebration of excellence, innovation, and achievement in the world of landscaping. Hosted at the elegant JW Marriott Grosvenor House in London, the event is set to attract the best the landscaping community has to offer, including designers, contractors, suppliers, and clients.

## Why Attend the National Landscape Awards?

The National Landscape Awards are renowned for recognising and rewarding the highest standards of landscape design, construction, and maintenance across the UK, as well as highlighting companies who supply and provide outstanding products to the industry and support their staff. Attending the event allows you to be part of this grand celebration, acknowledging the hard work and creativity that drives the industry forward.



Rub shoulders with industry leaders, innovators, and influencers. The Awards provide a unique platform for networking, offering you the chance to connect with potential clients, collaborators, and suppliers. Build relationships that could propel your business to new heights.

## How to Purchase Tickets

Tickets are now available for purchase through the Awards website at [baliawards.co.uk](http://baliawards.co.uk). Don't miss out on this opportunity to be part of the most anticipated event in the landscaping calendar. Secure your spot today by visiting [baliawards.co.uk/ceremony](http://baliawards.co.uk/ceremony) and follow the easy steps to book your tickets.

Join us on 6 December 2024, at the JW Marriott Grosvenor House

in London for an unforgettable celebration of the very best in landscaping. Whether you're attending to celebrate your own achievements, to network with the industry's elite, or simply to be inspired, the 2024 National Landscape Awards promise an experience like no other. Mark your calendars, purchase your tickets, and get ready to be part of landscaping excellence!

### Event Information:

**Date:** 6 December 2024

**Location:** JW Marriott Grosvenor House, Park Lane, London

#### Ticket Cost:

Individual Place - £227.00

Table of 10 - £2,120.00

Table of 12 - £2,544.00

#### Timings:

Reception: 11am

Luncheon and Awards: 12pm

Close: 4:30pm

Dress code: Business attire

[baliawards.co.uk](http://baliawards.co.uk)



**BALI**  
National  
Landscape  
Awards

✉ @BALI\_Landscape

📷 balilandscapeuk



Headline Sponsor

# TICKETS ON SALE NOW

Don't miss out - book your place

at [baliawards.co.uk](https://baliawards.co.uk)

Friday 6 December 2024  
11am - 4:30pm  
JW Marriott Grosvenor House,  
Park Lane, London

For general enquiries, contact **Emily Feeney**  
Telephone: **07936 944258**  
Email: [emily.feeney@bali.org.uk](mailto:emily.feeney@bali.org.uk)

For sponsorship opportunities,  
contact **Joanna Pieprzak**  
Telephone: **07842 436597**  
Email: [joanna.pieprzak@bali.org.uk](mailto:joanna.pieprzak@bali.org.uk)

HEADLINE SPONSOR



SPONSORED BY



## RYMER TREES AND HEDGING – ROOTED IN QUALITY, CELL-GROWN AND 100% PEAT-FREE

Rymer Trees and Hedging specialise in cell-grown, year-old tree and hedging whips grown from seed. We supply multiple sectors - from large, grant-aided schemes to small-scale landscape design projects.

Our innovative nursery is one of the first wholly peat-free tree nurseries in the UK, and our cell-grown approach, produces high quality plants with robust root systems. Using Rymer Trees and Hedging cell-grown whips gives a far extended planting window when compared with bare-root, and our clients report excellent establishment rates. Our production is lead by values rooted in sustainability alongside rigorous traceability from sowing through to dispatch. We are proud to be Plant Healthy, FRM registered and UKISG assured.

Contact us to explore what we can provide for your next planting project.

[trees@rymertrees.co.uk](mailto:trees@rymertrees.co.uk)  
 Harry - 07703 857123  
[rymertrees.co.uk](http://rymertrees.co.uk)



## MYCORRHIZAL FUNGI SUCCESS IN SOFT LANDSCAPING



- Improves nutrient usage
- Reduces plant mortality
- Superior water uptake
- Improves drought tolerance
- Overcomes replant problems



[rootgrow.co.uk](http://rootgrow.co.uk)  
[info@plantworksuk.co.uk](mailto:info@plantworksuk.co.uk)  
 01795 411527



Technology supporting regenerative farming

## IRRIGATION SPECIALISTS

Design  
 Install  
 Maintain

Commercial  
 Residential  
 Contractors

Watermatic

IRRIGATION | LIVING WALLS | GREEN ROOFS

01923 83 99 88  
[www.watermaticltd.co.uk](http://www.watermaticltd.co.uk)

# CARBON GOLD<sup>®</sup>





# HEDGING PLANT SPECIALISTS

Hedges Direct is the UK's leading supplier of hedging plants, despatching direct from our 16 acre nursery site in Lancashire, covering all of mainland UK - and with nearly 20 years horticulture experience, we make buying hedges easy.

As a Hedging plant specialist, we have plants for every project - from popular evergreens to UK grown native varieties, all available in a range of heights and root types, with year round options in over 100 species.

## Expert Advice

The Hedges Direct trade team are highly experienced and provide expert advice and a friendly, efficient and flexible service tailored to work for you. They're here to help you with all your planting requirements, whether we stock it or not. We work with growers and suppliers of all types of plants from across the UK

and Europe, meaning we can be your complete one-stop-shop for plants, saving you both time and money.

## No quibble, 12 Month plant guarantee

We never compromise on quality. Our teams work hard to hand-pick your plants to ensure that you will get the best quality plants for your project. The Hedges Direct 12 month guarantee is our promise that you can buy our plants with complete confidence - if any fail within the first 12 months after delivery, we will replace them.

## Delivered with care

We have been delivering plants since 2005, so we know our stuff. We offer trade customers a flexible delivery service so you can have your plants delivered on a date that works around you and your projects. We can deliver directly to you or to your customer, whatever suits best.

## Who Are Our Trade Customers?

Hedges Direct is the hedging specialist of choice for many companies in the public and private sector. We regularly work with Landscapers and Garden Maintenance companies, Garden Designers and Landscape Architects as well as Property Developers, Builders, Leisure Companies, Farmers and Land Managers on all land and design projects.

From the public sector we work hand in hand with local councils and educational establishments to help improve the local environment, plus promote health and wellbeing.

---

Explore more at [hedgesdirect.co.uk](https://hedgesdirect.co.uk)  
or call our trade team on  
**01257 806101**





Hedges Direct is the UK's leading supplier of hedging plants. We offer the largest range of hedging plants in the UK, from 10cm to 8m and over 100 hedging species.

Whether you are looking for decorative hedging, boundary hedges, screening and partitions - or perhaps need to create privacy, improve land drainage, or reduce noise and wind, we have hedging options and solutions to suit all situations and budgets.

Our dedicated trade team are here to help. They offer expert advice and bespoke trade pricing along with a completely flexible, fast and efficient delivery service, tailored to match you and your specific requirements.

We don't just stop at hedging either - with grower contacts from all over the UK and Europe, we can source all your planting requirements whether that's shrubs, trees, topiary or garden plants for a complete one-stop-shop service.

Contact us today to see how we can help you!



01257 806101

[trade@hedgesdirect.co.uk](mailto:trade@hedgesdirect.co.uk)

[www.hedgesdirect.co.uk](http://www.hedgesdirect.co.uk)

 **HEDGES DIRECT**

# EXPLORE THE WATER LEISURE LANDSCAPE AT SPATEX 2025

Tapping into the magic of water leisure, SPATEX 2025 is Informative, interesting and unmissable. The UK's annual exhibition returns to the Coventry Building Society Arena, Tuesday 4th to Thursday 6th February. Whether commercial or domestic, it offers an opportunity to take a deep dive into the world of spas, wellness suites, swimming pools, steam rooms, saunas, water features, enclosures and all the ancillary equipment.

## Here's five reasons to attend SPATEX 2025:

- 1. Unique** - Free to attend, the UK's only dedicated water leisure exhibition is a go-to event for all those involved in the design and construction of wellness leisure facilities. Network with over a hundred exhibiting companies, including all the leading manufacturers and suppliers from around the world. SPATEX 2025 provides an opportunity to view and compare a host of new innovations. See, touch and discuss the latest products and take advantage of exclusive show offers. Meet the decision-makers - this is where all the conversations that will shape this market over the next 12 months will take place. Ensure your business is part of the conversation.
- 2. Gain valuable insights** - Saving energy and sustainability will, once again, be top of the agenda. See the latest models and innovations, from heat retention covers and LED lighting to air source heat pumps and super insulated one-piece pools, there is plenty to catch the eye. Minimising energy usage is a consideration that needs to be factored in at the design stage which is why this show is of vital importance for architects and designers.



Photo credit: USSPA

- 3. Free intelligence** - Energy saving will also feature in SPATEX's double seminar programme - the industry's largest, free-to-attend learning opportunity. Catch over 20 CPD-accredited technical workshops, curated by ISPE (Institute of Swimming Pool Engineers) in Arena 1. Arena 2 offers an equally varied programme with industry leaders giving their insights on topics such as future trends, social media and marketing, and best practice.
- 4. Expert advice** - Gain the most up-to-date information from over a thousand industry professionals. Some things can only be done in person - bring your plans with you - there's no better place to seek impartial advice from a variety of specialists, and all for free. Visit the SPATEX Help Desk at the entrance to the Arena to be pointed in the right direction.
- 5. Design inspiration:** View and discuss how adding water leisure to an installation can totally

transform its aesthetic. The BSPF (the British Swimming Pool Federation) will showcase on stand A1, on Wednesday and Thursday of the show, the 2025 British Pool & Hot Tub Award-winners, featuring the best examples of design, construction and installation.



Photo credit: SPATEX 2025 Exhibitor - Niveko

**SAVE THE DATE: SPATEX 2025**  
- Tuesday 4th to Thursday 6th  
February. The Coventry Building  
Society Arena, Coventry CV6 6GE  
Register your interest now and sign  
up for monthly newlines  
[www.spatex.co.uk](http://www.spatex.co.uk)  
For more info: [helen@spatex.co.uk](mailto:helen@spatex.co.uk)  
Tel: +44 (0) 1264 358558

# SPATEX

THE POOL, SPA & WELLNESS SHOW

TUESDAY 4 – THURSDAY 6 FEBRUARY 2025

FOR MORE INFORMATION AND  
TO REGISTER FOR FREE VISIT:

WWW.SPATEX.CO.UK OR  
CALL +44 (0)1264 358558

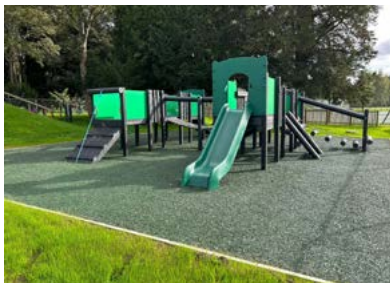


*All sectors of the water leisure industry from pools, spas, saunas, hydrotherapy, steam rooms and play equipment, in the domestic and commercial arenas, are represented at SPATEX.*

**COVENTRY BUILDING SOCIETY ARENA • COVENTRY • UK**

**MARKET LEADERS IN RECYCLED PLASTIC PLAY EQUIPMENT**

At PlayQuest, we recognise that the choices we make regarding the materials we use in our play equipment will have an impact on everyday life.



We use Recycled Plastic produced from the waste collected by domestic recycling schemes - which includes plastic bottles and food containers.

As well as being better for the environment, the Recycled Plastic material does not rot or splinter, will last for decades and is virtually maintenance free.

We can also replace individual old, rotten timbers with new Recycled Plastic posts, saving the cost of replacing old play equipment with brand new play equipment.

Our Recycled Plastic play equipment comes with a 30-YEAR guarantee, with a life-expectancy of 50 years + in the ground!

For more information please visit: [playquestadventureplay.co.uk](http://playquestadventureplay.co.uk) or call our Head Office: 01745 561117.



Ask us about our extensive Pole Climber range!



Bespoke Design, Physical Play Equipment, Outdoor Learning, UK Manufactured



[playspaces.co.uk](http://playspaces.co.uk)

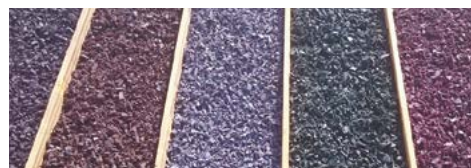
Find us on: T: 01622 844 238 E: [info@playspaces.co.uk](mailto:info@playspaces.co.uk)



**ECORUBBER CHIPPINGS**



Colour Variations



**Safe, long lasting, trouble free, colourful ground cover. Ideal for play areas, landscaping & animal settings.**

**01977 529 570 | [info@ecochippings.co.uk](mailto:info@ecochippings.co.uk)**

**[ecochippings.co.uk](http://ecochippings.co.uk)**



## Landscaping for the Future

Enhance your garden experience with cutting edge performance and perfection

East Midlands Husqvarna Approved Pro-Partner



We are here to help you find the perfect garden machine for you and your garden





Warsop: 01623 847 171 Timeswell: 01298 872 049 Fauld: 01283 521 522 Dodworth: 01226 730 707 Swineshead: 01205 600 900

# screwSHOP.co.uk

SCREWS FIXINGS FASTENERS BRACKETS  
FOAMS SEALANTS ADHESIVES AND MORE



LOW PRICES UK NEXT DAY DELIVERY  
**THE EXPERTS CHOICE SINCE 1985**

THE HOME OF

**TURBOQWIK**  
THE PRECISION MULTIPURPOSE PREMIUM WOODSCREW









**SCAG**  
POWER EQUIPMENT

Debris Clearance Equipment





Pedestrian and Stand-on mowers





Electric and Petrol ride-on plus Remote Control mowers

**Rapid RoboFlail®**

**APF 2024**  
**GROUNDS Fest**

**SALTEX**  
SPORTS AMENITIES LANDSCAPING TURF EXHIBITION

01789 488450  
info@st-mach.com  
www.st-mach.com



www.st-mach.com



# THE SUSTAINABLE SOLUTION: KRESS RTKN ROBOTIC MOWERS

## EMISSION-FREE TURF CARE FOR GREENKEEPERS

As sustainability becomes increasingly vital for golf courses and large turf areas, greenkeepers are seeking efficient, cost-effective ways to reduce their carbon footprints. Kress RTKn robotic mowers combine cutting-edge technology with zero-emissions to offer a comprehensive solution.

### Precision and Performance Redefined

Kress RTKn mowers are setting a new benchmark in turf care by delivering unparalleled precision and performance. These innovative machines operate quietly and without emissions, offering a greener alternative to traditional petrol-powered mowers. The impact of switching to Kress RTKn robotic mowers is substantial - an 18-hole golf course could reduce its carbon footprint by up to 10 tons annually, making a significant contribution to environmental sustainability.

### Addressing Common Turf Care Challenges

Maintaining a pristine golf course or

turf surface comes with its own set of challenges, especially under time constraints and changing weather conditions. Kress RTKn mowers are designed to tackle these issues head-on. Their ability to operate efficiently in wet weather ensures consistent cutting even when grass growth is at its peak.

### Silent and Safe Operation

One of the standout features of Kress RTKn mowers is their near-silent operation. This allows greenkeepers to schedule mowing at any time of day or night without disturbing nearby residents, hotel guests, or players. Additionally, the robotic mowers reduce safety risks, such as the potential for staff injuries from flying golf balls.

### Enhanced Turf Health and Longevity

Kress RTKn robotic mowers go beyond just cutting grass; they actively contribute to the health of the turf. By mowing early, even when dew is present, they reduce issues like soil compaction and

minimise the effects of worm casts and mole activity. The consistent and gentle cutting action also promotes healthier grass growth, leading to more vibrant and resilient turf.

### A Smart Investment for the Future

The long-term benefits of investing in Kress RTKn robotic mowers extend beyond just operational savings. Their advanced technology, reliability, and efficiency set a new standard in commercial turf care. For greenkeepers focused on both environmental impact and health benefits, these mowers represent a forward-thinking investment that helps with the evolving demands of sustainable landscaping.

For more information, visit the Kress website: [kress.com/en-gb/rtkn-without-boundary-wire](https://kress.com/en-gb/rtkn-without-boundary-wire)

# THE FUTURE OF UNMANNED MOWING IS NOW.

The Kress RTK<sup>n</sup> robot mowers extend unmanned mowing to larger areas. They efficiently operate in parallel lines and autonomously move from one area to another, as if driven by humans. There is no need for boundary wires or on-site aerials. The Kress RTK<sup>n</sup> robot mowers maintain areas of up to 36,000 m<sup>2</sup> each.

## RTK<sup>n</sup>

Real-time kinematic to the  
power of network



# Kress<sup>®</sup>

Speak to your local garden machinery dealer today to learn more.

[kress.com](https://www.kress.com)

# BETTER VISIBILITY, COMPLIANCE, AND EFFICIENCY: STREAMLINING LANDSCAPING WITH RE-FLOW



Know the location of your assets and the progress of your teams in real-time, ensure compliance, and streamline your business.

Multiple job locations, hassles around compliance, and managing the different elements that go into scheduling can be complicated.

This is especially the case for companies still operating without field management software, or companies using field management software not up to scratch.

When you choose a digital solution like Re-flow, honed alongside landscaping companies like The Lamorna Group, the benefits are numerous...

### Visibility

Workers check themselves in, register equipment as in use and more with location-stamped and time-stamped forms. Managers know exactly where their teams are, what the teams are working on, and what they've done.

With the software's ability to mandate tasks and to include photo evidence of completed works, managers get complete oversight of operations.

### Compliance

Sometimes the best operatives can neglect compliance processes. That's no use when it comes to building an audit trail, or making sure companies have all the information they need for their accreditation.

Re-flow's forms include autofill and are quick to complete, making workers feel more process driven and motivated to do their admin.

Method statement and risk assessment (RAMS) forms are completed quickly and easily with a few button presses. Each submitted form then saves into an audit-ready database.

### Efficiency

Juggling endless amounts of data, forms, plans, tasks on old spreadsheets or inferior software can lead to errors and plenty of slowdown for admin staff.



### Field management software designed for commercial landscaping businesses fixes that:

- When building jobs staff use presets. (Specific kit, specific number of operatives, specific qualifications, and so on.)
- Automations, autofill, and notifications make repetitive actions quick and error proof during scheduling and ensure workers can't be double booked or assigned work when on leave.

### Re-flow helps operatives through:

- App to dashboard communication simplifies workflows.
- Quick-fill digital forms give workers more time for the job at hand.
- In-app photo uploads evidence work and the reasons for delays, useful for client interactions.

Available online and offline, for short jobs to huge projects, Re-flow is a powerful levelling-up boost for landscaping companies.

Experience Re-flow today with a free trial - [www.re-flow.co.uk](http://www.re-flow.co.uk)



**DO YOU KNOW  
WHERE YOUR  
OPERATIVES  
ARE TODAY?**



**RE-FLOW DOES**

**Re-flow**<sup>®</sup>  
Field Management



Intuitive, flexible, powerful –  
the only field operations software  
you will ever need.

Call 01392 574002  
Visit [www.re-flow.co.uk](http://www.re-flow.co.uk)



LEARN MORE

GROUNDS  
*Fest*

Visit us at Hall 1, Stand 31

**MAKITA LAUNCHES ITS FIRST ROBOTIC MOWER**



The new RM350D Robotic Mower from Makita can cover lawns up to 3,500m<sup>2</sup> and slopes of up to 26°. It is designed to mow the lawn and once the battery has discharged, will automatically return to its dedicated charging station, then resume once charging is complete - making it a totally autonomous system.

The machine is not reliant on satellites for navigation control: Users set the boundary wires and guides and press go, with no need to download and sync up to an app. The starting and target height of the lawn can be adjusted and the cutting height can be adjusted from 20-60mm in 5mm increments.

The schedule settings feature allows users to programme the product to run on specific days and times of the week and its IPX5 rating means it can be cleaned with a hose - simply remove the top cover to wash the entire machine with water.

Find out more: [www.makitauk.com](http://www.makitauk.com).

**GROUNDSMAN**<sup>®</sup> *Leading by design*

<p><b>Turf / Sod Cutters</b></p> <ul style="list-style-type: none"> <li>• Exceptional Traction &amp; Cutting Ability</li> <li>• Low Operator Hand Arm Vibrations</li> <li>• 12 - 24 inch Sod Cutting Widths</li> </ul> 	<p><b>Turf Aerators</b></p> <ul style="list-style-type: none"> <li>• Solid or Hollow Coring Tines</li> <li>• Proven Reliability &amp; Performance</li> <li>• Consistent Depth to 5" Depth</li> </ul> 
<p><b>Soil / Core Collector</b></p> <ul style="list-style-type: none"> <li>• Hugs Contours for Clean Collection</li> <li>• For Groundsman Aerators, Turf Tractors and other aerators</li> </ul> 	<p><b>Tractor Aerators</b></p> <ul style="list-style-type: none"> <li>• Hollow &amp; Solid Tine to 6" Deep</li> <li>• Core &amp; Collect in One Pass</li> <li>• Proven Rugged &amp; Low Maintenance</li> </ul> 

**See Us At Groundfest Stand 28A**

<p><b>Versatile</b> <b>Reliable</b> <b>Performance...</b></p>	<p><b>Tel : +44(0) 28 2766 7049</b> <a href="mailto:enquiries@groundsmanindustries.com">enquiries@groundsmanindustries.com</a> <a href="http://www.groundsmanindustries.com">www.groundsmanindustries.com</a></p> 
---	---

**SPIN TURF MACHINERY DISTRIBUTOR FOR GRADEN<sup>®</sup> TURF MACHINES AND SPIN-RAKE**



The Dutch company SPIN Turf Machinery is the new importer of the Australian made Graden<sup>®</sup> turf machines for the UK, Ireland, and continental Europe.

The company also produces the Spin-Rake, a range of rake-machines, ideal for removing thatch and weeds.

The advantage of the Spin-Rake is that its tines rotate, so that they evenly disperse and mulch the debris, leaving a pristine turf surface without stripes.

As the removed thatch and weeds are easily processed by mower blades, there is no extra clean-up work.

The Spin-Rake ranges from small models behind bunkermachines for golf, till the 6m wide foldable models, ideal for large areas.

This summer, prestigious turf farmers supplied the turf for several UEFA footballfields in Germany, using the Spin-Rake for the grass blades to stand up before cutting.



The Spin-Rake can also be connected to the front of the tractor, with a mower or a sweeper at the rear, for realizing the perfect cut or collection. All in one single pass.

Now the Spin-Rake is being introduced in the British Isles.

Distributors are welcome to apply for all areas except Northern Ireland.

**Contact: SPIN Turf Machinery**  
[info@spinturfmachinery.com](mailto:info@spinturfmachinery.com)  
**+31-610752307**  
[www.spinturfmachinery.com](http://www.spinturfmachinery.com)

# LANDSCAPE & URBAN DESIGN



Providing the UK's major landscaping and urban design specifiers with a comprehensive look at the latest in landscape design and management, design innovations, garden design, the built and natural environment, public space, green space, open space and environmental sustainability.

## FREE DIGITAL MAGAZINE SUBSCRIPTION

### Subscription enquiries:

Call - 01304 806039  
info@mhmagazine.co.uk

### Advertising enquiries:

Lee Martin - 01227 936974  
lee@landud.co.uk

### Editorial submissions or enquiries:

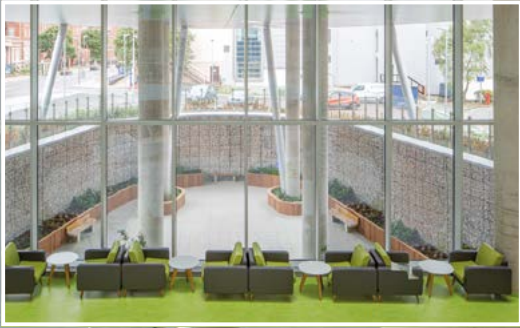
Antony Holter - 01304 806039  
antony@mhmagazine.co.uk



**SUBSCRIBE TODAY!**

#designthenation

clatterbridge hospital



01254 685 185

sales@woodscape.co.uk

woodscape.co.uk

woodscapegroup

woodscapeltd



Woodscape.

Bespoke Street Furniture