



# ARCHETECH

Turning Dreams into Reality

Issue 75 £4.99



# Ny and improved stone wool insulation

Specify the most thermally efficient stone wool insulation currently available in the UK & Ireland across two core solutions.†



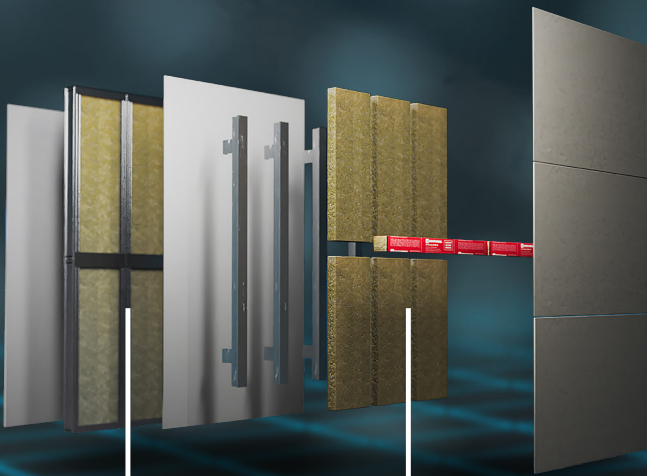
Low lambda value –  
0.032 W/mK



Non-combustible,  
Euroclass A1 rating



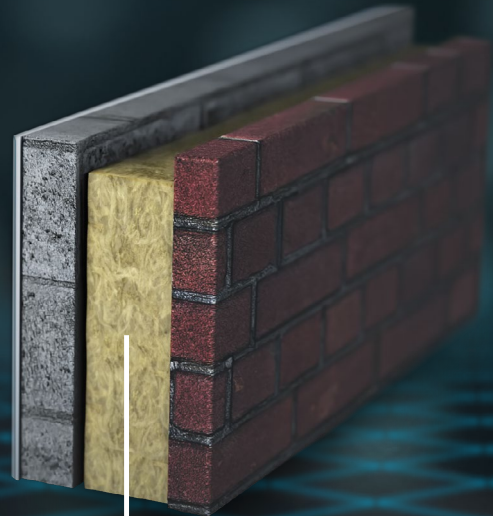
Proven to last throughout  
a building's lifetime\*



**NyRock  
Frame Slab  
032**

A combined solution for external  
walls, rainscreen and façades.

**NyRock  
Rainscreen  
032**



**NyRock  
Cavity  
Slab 032**

Cavity insulation for full and  
partial-fill applications.



Choose your  
**NyRock® solution**

[rockwool.com/uk/nyrock-solutions](https://rockwool.com/uk/nyrock-solutions)



† Correct at time of sending, based on publicly available performance data of comparable stone wool products

\* FIW (German test and research institute), Durability Project Mineral Wool, 2016

# ARCHE TECH

Turning Dreams into Reality

## Main Features

- Editor's Choice 9-21
- Bathrooms & Kitchens 25-27
- Doors, Windows & Fittings 33-41
- Drainage & Plumbing 42-43
- Fire Safety & Security 48-55
- Floors & Flooring 58-59
- Heating, Ventilation & Insulation 60-63
- Interiors & Interior Design 64-69
- Landscaping & External Works 72-75
- Lifts, Stairs & Balustrades 79
- Lighting & Electrical 80-83
- London Build Preview 84-87
- Roofing, Cladding & Facades 91-95



## Case Studies

### FOSTER & PARTNERS - 6-8

Bodegas Faustino Winery

part of the £700m Connect Programme have been unveiled

### VALOURAN - 12-14

Alex Michelin and Matthew Robertson launch new venture

### CONCRETE AMSTERDAM - 64-66

A Vibrant Fusion of Heritage and Modernity

### CIRCULAR CAMPUS AND COOKING CLUB - 22-24

A dining and cooking space for AIR in Singapore

### FOSTER & PARTNERS - 70-71

Battersea Roof Gardens and 50 Electric Boulevard

### SERIE ARCHITECTS + MULTIPLY ARCHITECTS - 30-32

The Sentosa Sensoryscape

### PIAZZA MATTEOTTI PUBLIC GARDENS - 72-73

a welcoming and vital space

### DESIGNING A STYLISH ENTRANCE WITH ALUMINIUM - 36-37

How aluminium entrance doors can be a bespoke solution if you want to create a truly unique front door

### SCHMIDT HAMMER LASSEN + PERKINS&WILL - 44-45

Beijing Performing Arts Centre

### ANTICIPATE LONDON - 46-47

Repositioning Facilities Show for the Future

### UNIVERSITY OF WARWICK LAUNCHES UNPRECEDENTED £700M CAPITAL INVESTMENT - 56-57

BDP's plans for The University of Warwick's STEM Connect Programme,



# Workplace storage equipment

**bott**



CONSULT | DESIGN | MANUFACTURE | DELIVER | INSTALL



- Your workplace storage partner
- Dedicated projects team
- Custom design service (virtual or on-site)
- Professional installations
- Made in the UK
- 10-year warranty



Download our projects brochure  
by scanning the QR code or visit  
[www.bottltd.co.uk](http://www.bottltd.co.uk)

[bottltd.co.uk](http://bottltd.co.uk) | [projects@bottltd.co.uk](mailto:projects@bottltd.co.uk) | 01288 357788



**Editor in Chief**

Antony Holter - 0203 911 4067  
antony@archetech-media.co.uk

**Editor**

Isabelle Hart - 0203 911 4067  
isabelle@archetechmag.co.uk

**Sales Director**

Steve Hawkins - 0203 907 9165  
steve@archetech-media.co.uk

**Digital Manager**

Jamie Bullock - 01227 936971  
jamie@archetech-media.co.uk

**Editorial Assistant**

Meg Parker - 0203 907 9161  
meg@archetech-media.co.uk

**Business Manager**

Josh Holmes - 0203 911 4067  
josh@archetech-media.co.uk

**Publishing Director**

Martin Holmes - 0203 911 4067  
martin@archetechmag.co.uk

**Accounts**

Lauren Davis - 0203 911 4067  
lauren@archetechmag.co.uk

**Studio Designer**

Richard Bland  
richard@archetech-media.co.uk

# ARCHETECH

Turning Dreams into Reality

The Archetech magazine is an insightful information source for Architects, Architectural Technologists and Interior Designers. We feature lead stories on current projects, industry news and case studies so that our readers have the opportunity to keep up to date in the ever changing world of architecture and design.

Archetech offers architectural and design services to all those who are initiating, planning and implementing projects. Whether you're an interior designer, architect, technologist, developer or builder who is searching for inspiration for the next project, Archetech hosts the latest products, case studies and services to meet those needs.

With sharp editorial content, a cutting-edge design approach and informative written style, our advertisers and readers alike can take confidence in our experience and ability in matching your product to the needs of the marketplace.

**Archetech Media Ltd**

Tel: 020 3911 4067  
www.archetech.org.uk  
info@archetechmag.co.uk

Every effort is made to ensure the accuracy and reliability of material published in Archetech Magazine, however, the publishers accept no responsibility for the claims or opinions made by contributors, manufacturers or advertisers. No part of the publication may be reproduced or transmitted in any form or by any means, mechanical, electronic (including printing), recording or stored in any information retrieval system without the express prior written consent of the publisher.

## SUBSCRIBE NOW

### Digital Edition

SUBSCRIBE TO OUR ONLINE ISSUES FREE OF CHARGE

- Accessible anytime and anywhere on most electronic devices
- Receive the magazine by email as soon as each issue is released
- All issues are stored in an archive, so you can look back across every edition
- Now available on 3 major digital platforms: ISSUU, Joomag and Readly

### Printed Edition

- Free of charge for qualifying trade professionals
- Paid subscriptions are available, for non qualifying trade professionals



### HAVE YOU GOT A PROJECT YOU ARE PROUD OF?

If you've recently finished a project, conversion or renovation, why not submit it to our Editor in Chief for a chance to be featured in our next issue! Email [antony@archetech-media.co.uk](mailto:antony@archetech-media.co.uk) with details of your latest project.

Visit: [www.archetech.org.uk/subscribe](http://www.archetech.org.uk/subscribe)



# BODEGAS FAUSTINO WINERY

FOSTER + PARTNERS

A major winery extension: Legacy of Bodegas Faustino opens - Celebrations marked the opening of a new extension to the Bodegas Faustino Winery in Oyón, Rioja Alavesa. Commissioned by the fourth generation of the Martínez Zabala Family, Foster + Partners has designed a major extension and refurbished the existing facilities at the winery. In line with the practice's unique vision and as one of Bodegas Faustino's organizational pillars, sustainability is integral to the project with a new visitor center that has been designed as a 'Planet 1.0' building.

Norman Foster, Founder and Executive Chairman, of Foster + Partners said: "Our valued relationship with the Martínez Zabala Family stretches back to the last two decades when we first worked together on their Bodegas Portia in 2010. The new project in Oyón knits



“

*The vaulted roof is inspired by the industrial heritage of the winery, reinterpreted as a lightweight structure made from timber arches.*

together the entire site with discreet, sustainable interventions to the existing buildings and landscape, and an entirely new visitor center that provides a new social focus and image for the winery with an immersive experience for all.”

Bodegas Faustino is located in the heart of Spain’s principal wine-making region where the family first started building their wine business. The design reinterprets the winery as a whole and creates a stronger connection between the existing cellars and the surrounding vineyard. The main entrance has been relocated to the north of the site to create a new visitor experience making the vineyard the first thing visitors encounter on their tour - a series of unique experiences in which wine, vineyard, nature, architecture, culture, and sustainability blend together. A gentle path leads to the new visitor center, the main protagonist of the project. It is designed as a vaulted and column-free hall to create a spacious and flexible volume. The vaulted roof is inspired by the industrial heritage of the winery, reinterpreted as a lightweight structure made from timber arches. The anti-funicular profile enhances structural performance with minimal materials, while its earthy color palette allows the building to blend seamlessly with the landscape. An asymmetrical core connects with the mezzanine above while creating two distinctive zones at the lower level, each with a different character. The upper level overlooks





the entire visitor center and the beautiful vineyard landscape beyond.

The new visitor center is designated as a 'Planet 1.0' building - as its carbon emissions can easily be absorbed by the Earth's green cover - making it a truly sustainable exemplar. The building also adopts an Energy Plus strategy led by the photovoltaic panels on the roof that produce more energy than required for building operations. The excess energy is diverted to the existing winery buildings. The building features large overhangs on all four sides to reduce heat gain from the sun while blurring the boundaries between inside and outside. A central skylight and carefully integrated glazed facades bring natural light into the interior spaces, reducing the need for artificial lighting. Natural building materials contribute to a biophilic environment and enhance the well-being of visitors and employees. The new landscape features

local species that enhance biodiversity and a discreet change in topography that is designed to protect the winery from the increasingly frequent heavy rainfall.

The new landscape also blends with the existing site's existing facilities which, in conjunction with the relocation of the loading bays and control station during harvest, has significantly improved operational efficiency. In addition, underutilized structures have been removed to provide flexibility for future growth in line with the client's desire to incorporate new technologies into the winemaking process. Greenery has been added to the facades of the existing buildings to provide natural protection from the summer sun, further reducing energy consumption across the site. The result is a quietly efficient and integrated design that reinforces the commitment of the fourth generation of the Martínez Zabala family to the future

[www.fosterandpartners.com](http://www.fosterandpartners.com)





Emerald Ward



**SUNRAY**  
TIMBER FIRE DOORS  
An ASSA ABLOY Group Company

# Manufactured, Tested, Specified, Certified

Sunray is the specifiers choice for **Timber Fire Doors and passive Fire Protection**. Our comprehensive Timber Door Range provides Fire Integrity from **FD30 to FD120** and Security Rating of **SR1 & SR2** with Fire Secure.

All Doors are bespoke enabling specialist hardware, vision panels, overpanels and of course colours and finishes.

We operate in numerous sectors and provide performance specifications to meet project requirement.

We are the  
specifier's choice for:



COMMERCIAL



HOTEL / LEISURE



SOCIAL HOUSING



HEALTHCARE

For more details, call our specialised team to discuss your particular project on

# 01233 639039

[sales@sunraytimberdoordivision.co.uk](mailto:sales@sunraytimberdoordivision.co.uk) | [www.sunraytimberdoors.co.uk](http://www.sunraytimberdoors.co.uk)



# ROCKWOOL® DEVELOPS CPD TO HELP CLOSE THE PERFORMANCE GAP

ROCKWOOL, the UK's leading stone wool insulation manufacturer, has launched a new CPD (Continuing Professional Development) module to help specifiers and installers understand the issue and the role insulation can play in avoiding the performance gap; a discrepancy in modelled energy use at the design stage, compared to the as-built stage.

The Thermal Regulation and the Performance Gap CPD aims to improve understanding of the role insulation plays in reducing the energy consumption, and therefore the rate of carbon emissions, of buildings. ROCKWOOL has also published a technical bulletin demonstrating how samples independently measured at the University of Salford provided data relating to the thermal performance between abutted stone wool slabs.

"The CPD explains the impact of the performance gap on building thermal efficiency. It also looks at the current regulations and standards and how stone wool can help address the performance gap," comments James Francis, Product Manager at ROCKWOOL.

During the CPD participants will learn about the importance of specifying the right insulation for each project, based on detailed calculations and how this, combined with installing it correctly, is the first step to narrowing, or even avoiding, the performance gap. Some of the most common mistakes during installation that can have long-term effects on the energy performance of the building, will also be addressed.



“  
*The CPD explains the impact of the performance gap on building thermal efficiency*

Finally, the CPD outlines ROCKWOOL's range of non-combustible stone wool insulation products and how thermal tests conducted by the University of Salford Thermal Measurement Laboratory show that, when considering five product types over the density range of 27 to 152 kg/m<sup>3</sup>, there is no loss in thermal performance between a stone wool slab and two tightly jointed pieces.

The new module is available through the manufacturer's bespoke learning platform, ROCKWOOL Learning, or as a traditional in-person course. To learn more about the CPD, and to register for a place, visit: <https://rockwool.link/pg-cpd>



# ROCKWOOL Fire Barrier EN

A new, EN-tested solution designed to inhibit the spread of fire and smoke through concealed spaces.

ROCKWOOL Fire Barrier EN is tested for common constructions and penetrations.

- Tested to BS EN 1364-1:2015
- Single 50mm thickness
- Single or double-sided black foil facing
- Up to 2 hours fire resistance – integrity and insulation\*

Fire Barrier EN replaces ROCKWOOL Fire Barrier as of 15th May 2024.



Find out more:



[rockwool.com/uk/  
FireBarrierEN](https://rockwool.com/uk/FireBarrierEN)



[rockwool.com/uk](https://rockwool.com/uk)



# VALOURAN

---

## ALEX MICHELIN AND MATTHEW ROBERTSON LAUNCH NEW VENTURE

Alex Michelin, co-founder of Finchatton, and Matthew Robertson, former CFO, have taken their collective 40 years of experience to mastermind Valouran, a global, pioneering property developer and placemaker with an unrivalled knowledge of the residential market.

With a reputation for reshaping some of the capital's most iconic landmark sites, Valouran has launched with an unprecedented head start.

“Driven by a relentless pursuit for excellence, we generate value by delivering not only assets, but buildings of timeless elegance. Our vision is to craft exceptional residential-led schemes that blend world-class design with a laser focus on generating superior



“

*With a name derived from the word ‘Valour’, meaning ‘strength of mind and spirit; courage’ the team embodies resilience.*

returns for our investors and partners. We create beautiful homes that people will want to live in for a lifetime and hand down to the next generation” comments Alex Michelin, Valouran Founder & CEO.

Based in the heart of the West End, Valouran builds sustainable residential developments in the most desirable locations. Comprising 12 of the industry’s finest talents, collectively they have bought, financed, built, and sold over 120 projects, extending over 2 million sq. ft., with a combined value in excess of £2.7 billion.

With a name derived from the word ‘Valour’, meaning ‘strength of mind and spirit; courage’ the team embodies resilience. As an evolution of Finchatton, the most prolific prime property developer of the last two decades, Valouran continues this trajectory and will deliver best-in-class residential-led developments that push the boundaries of innovation and enhance the surrounding natural environment.





As the principal investor with an impeccable track record, Alex Michelin has secured agreements with large institutional funding partners to acquire landmark assets globally - in London and beyond. Valouran has a pipeline of several prime London schemes, in excess of £400 million, which will cater to a discerning clientele.

Exceptional architecture and design will be at the core of every project, with world-leading architects and interior practices involved in each scheme. Whether reimagining a heritage site or creating a contemporary masterpiece, the team strive to design modern icons and listed buildings of the future.

Matthew Robertson, Founder & CFO comments "Our knowledge of the sector is unmatched, which makes us a secure and reliable choice. There has been a real flight to quality from UHNW real estate investors in recent years - the wealthy are looking for secure opportunities that support the lifestyle they are seeking. Our deep financial expertise and commitment to excellence make our new venture the key partner for institutional investors aiming to maximise the value of their residential schemes."

[www.valouran.com](http://www.valouran.com)



## We work in four key industries

**Rail, Construction, Utility and Marine** but not limited to who we can assist.

GRP Access Walkways

GRP Maintenance Platforms

GRP Embankment Staircases

GRP Risers

GRP Access Stairs

GRP Drivers Access Platform

GRP Roof Walkways

GRP Handrails



## TALK TO US TODAY

+44 1206 396 446

[sales@steponsafety.co.uk](mailto:sales@steponsafety.co.uk)

[steponsafety.co.uk](http://steponsafety.co.uk)

**WE ARE MORE THAN JUST A COMPANY - WE ARE A TEAM OF EXPERTS DEDICATED TO MAKING THE WORLD A SAFER PLACE!**

## NE FASTENERS CELEBRATING 40 YEARS 1985-2024

NE Fasteners Limited, a family owned company is coming up to celebrating their 40th year of business.

We primarily specialise in screws fixings & fasteners for the DIY, hardware, building, joinery and furniture manufacturing sectors. NE Fasteners prides itself with offering expertise, competitive prices from local and internationally sourced standard and bespoke products.



Our warehouse is situated in a 7,000sqft warehouse in Cradley Heath in the West Midlands, we are able to provide a wide range of finishes, including zinc, electro brass, black chrome, satin chrome, bronze and nickel, and packaging options, ensuring that many buyers consider us to be a key and valued supplier.

Screwshop evolved from its established sister company NE Fasteners and has also proven a huge success with its online shop. After nearly 9 years in operation, we have grown year on year.

We have a great portfolio of products now on line at [www.screwshop.co.uk](http://www.screwshop.co.uk), our best own brand sellers are competitively priced, saving you lots of money.

## NEW APPOINTMENT STRENGTHENS PALACE CHEMICALS' POSITION IN THE SPECIFICATION SECTOR

Palace Chemicals is delighted to announce that Nick Bratt has recently joined the company as National Technical Sales Manager. This is the latest in a number of initiatives designed to strengthen Palace's position in the fast-growing commercial and specification sector. It is an area where the company already has a significant presence, but it believes that, due to the strength of the Palace product range and current market trends, there is a big opportunity to grow the business.

Nick joins Palace, following a career of 30 years in the tiling industry, 17 of which were at Norcros Adhesives in a technical sales role, working closely with specification customers. Prior to Norcros Adhesives, Nick was at BAL for ten years and Marlborough Tiles and Stone & Ceramic before that. This wealth of experience and the depth of his contacts within the tiling industry are second to none.

Nick says: "It is great to be joining the Palace team at this stage of the company's growth in this sector, and to have the chance to assist with the development of the specification department here at Palace Chemicals - I am very excited by the challenge."

Alongside Nick's appointment, the company, which is a member of NBS, is taking a number of other initiatives such as working with Glenigan, and it has also recently completed a RIBA-certified CPD.

For further information visit [www.palacechemicals.co.uk](http://www.palacechemicals.co.uk)

**screwSHOP.co.uk**

SCREWS FIXINGS FASTENERS BRACKETS  
FOAMS SEALANTS ADHESIVES AND MORE

LOW PRICES UK NEXT DAY DELIVERY  
**THE EXPERTS CHOICE SINCE 1985**

THE HOME OF

**TURBOOWIK**  
THE PRECISION MULTIPURPOSE  
PREMIUM WOODSCREW

**RHINO**  
SCREWS

Products shown include: Turboowik screws, Rhino screws, a metal bracket, a metal plate, a metal wire, a roll of tape, a tube of mcb Hard Surface adhesive, a tube of mcb Multi Purpose Specialist adhesive, a tube of SOUDAL Multi-Purpose SILICONE adhesive, and a tube of mcb The Snag List Eliminator.

## PALACE INTRODUCES RIBA-APPROVED CPD PRESENTATION FOR THE SPECIFIER MARKET

Palace Chemicals has introduced a new CPD presentation entitled 'Successful Specification of Wall and Floor Tiling and how to avoid Common Failures'. Developed for architects, specifiers and large contractors, the new presentation provides important information in these key sectors where there is often a lack of information readily available and answers questions frequently asked by architects when contacting Palace's technical department. Its also a great way to keep CPD qualifications up to date.

The main topics covered are as follows:

- Considerations when specifying tiling for floors.
  - o Tiling over timber-based substrates.
  - o Tiling over different screed types.
  - o Best practice floor tiling installation.
- Considerations when specifying tiling for walls.
  - o Weight loading limits of substrates.
  - o Correct preparation.
  - o Best practice wall tiling installation.
- Environmentally friendly adhesives.

The contents are RIBA-approved, so anybody viewing the presentation can be confident that the information is accurate, up-to-date and not commercially biased. Anyone interested in booking a seminar should contact Nick Bratt, National Technical Sales Manager, at [nick.bratt@palacechemicals.co.uk](mailto:nick.bratt@palacechemicals.co.uk).



**ELEMENTS®**  
INSPIRED BY NATURE

osmo®



**ORDER YOUR FREE COLOUR CARD**

[www.osmouk.com](http://www.osmouk.com)

AIR 401-430   EARTH 431-435   FIRE 436-438   WATER 439-440

0800 7833 228 sales@fireretardantuk.com

**fireretardantuk.com**

HR PROF is manufactured and approved to ISO 9001-2008

**HR PROF THE ECO-FRIENDLY FIRE RETARDANT**

- Water based - does not leach
- Allows wood to breathe naturally
- Internal / External application
- Colourless - Odourless
- EN 13501 – 1
- EN 16755 (EXT1) according to EN 927-6
- Euroclass B-s1-d0
- Non Toxic - No Solvents
- BS 476 part 6 & BS 476 part 7
- BM TRADA ISO 9001 Certificate
- Meets the **highest** EU standards



**Classification Reports & Certificates: Pine, Spruce, Scots Larch, Siberian Larch, Western Red Cedar, Oak, Thermowood, Birch, Birch Ply, and others, both Internal and External.**



[www.fireretardantuk.com](http://www.fireretardantuk.com)  
0800 7833 228 sales@fireretardantuk.com



**Latest Schöck BBA Certification raises the bar.**

Thermal break technology you can trust.

**SCHÖCK**  
Dependable by design



**BBA** APPROVAL INSPECTION TESTING CERTIFICATION  
CERTIFICATE 06/4877  
CERTIFICATE 10/4801

**REI 120**

No need to compromise on performance, quality or service. Schöck products meet full compliance with relevant UK building regulations, are approved by the BBA, NHBC accepted and classified as fire resistance class REI 120.

[www.schoeck.com](http://www.schoeck.com)

# CHOOSING THE LOW-CARBON ALUMINIUM OPTION FROM ALUPROF

BY WOJCIECH BROŻYNA - MD ALUPROF UK

Climate change, exacerbated by greenhouse gas emissions, presents a profound threat to ecosystems and communities globally. The aluminium production process is particularly intensive in emissions, contributing about 2% to the total global greenhouse gas emissions. Direct emissions are mainly produced from the energy required for alumina refining and aluminium smelting, whilst indirect emissions are generated along the value chain, including the extraction of raw materials, their transportation and the manufacturing processes involved.



Aluminium is a fundamental component of modern life, used in various applications ranging from infrastructure to transportation and packaging. It is therefore essential to ensure that its production is managed responsibly. Unchecked emissions from aluminium production will significantly contribute to climate change, resulting in increased temperatures, altered weather patterns and a rise in extreme weather events. These changes threaten biodiversity, strain natural resources like water, diminish agricultural yields, and elevate risks to infrastructure, human health, and livelihoods. It is crucial for the aluminium industry to engage in urgent climate action to reduce emissions in accordance with the Paris Agreement goal of limiting global warming to 1.5°C, thereby averting the most severe impacts of climate change.

A great deal of work has already been done in primary aluminium production, where carbon embodiment has been significantly reduced. According to a 2020 White Paper, 'Low-carbon Aluminium, Solution for Sustainable Construction & Renovation', primary aluminium from China, which has been as high as 20 CO<sub>2</sub>e/t (carbon dioxide emissions equivalent per tonne of aluminium), drops to an average global production output of primary aluminium of 16.7 CO<sub>2</sub>e/t. 'Low-carbon' primary aluminium in 2020 on average was reported as releasing 6.67 CO<sub>2</sub>e/ per tonne of aluminium.

Today, while 'low carbon' primary aluminium is not formally defined, a carbon footprint of less than 4 CO<sub>2</sub>e/t is a common reference, representing the very lowest achievable with currently available technologies. This carbon footprint is often referred to as 'Cradle to Gate'. The global aluminium industry has achieved this figure through the use of renewable energy sources such as hydro power and other renewable technologies. Further reductions will soon be possible as the industry begins to adopt emerging green hydrogen technology during the production cycle.

The amount of recycled aluminium utilised worldwide, often termed secondary production, has shown little variation, maintaining a range of 31-33% since 2000, with a notable peak of 34% in 2019. Given aluminium's high market value, collection rates tend to be robust; in 2019, collection rates for new scrap (pre-consumer) surpassed 95%, whilst those for old scrap (post-consumer) were just over 70%. It is vital to continue to improve the collection of post-consumer scrap, as recycling this material is significantly more energy-efficient, requiring only 5% of the energy needed for primary aluminium production. It is also important to note that aluminium can be recycled many times over without loss of quality.

According to a statement made by the Aluminium Stewardship Initiative (ASI) in February 2022, "Under a 1.5 degree scenario, the aluminium sector must reduce its GHG (Green House Gas) emissions from



Recycled billet

“

*A great deal of work has already been done in primary aluminium production, where carbon embodiment has been significantly reduced.*



*Aluprof's flagship MB-79N Window and Door System*

over a billion tonnes of CO<sub>2</sub>e to around fifty million tonnes by 2050. This is less than one-twentieth of current emissions.”

LowCarbonKety, a subsidiary of Grupa Kety, Aluprof's parent company, offers aluminium billet with an impressively low carbon footprint of 2.9 kg of CO<sub>2</sub> for every kilogram of aluminium produced. These low-carbon products are composed of up to 75% post-consumer scrap, around 10% pre-consumer scrap, and a minimal amount of primary aluminium, all manufactured using renewable energy sources.

It is important to consider that extended lead times may affect project timelines, potentially resulting in additional carbon costs. Conversely, selecting low-carbon products, including aluminium, may yield certain BREEAM credits for the project. These factors underscore the uniqueness of each project, necessitating a tailored approach. Engaging product suppliers during the early design phase is essential to explore viable options. Aluprof's experienced design team is available to assist in identifying the most suitable aluminium sources and systems for any project during your specification process.

Whilst it is crucial to reduce 'Embedded Carbon' in profile supply, here at Aluprof we take a holistic approach to carbon reduction by also reducing 'Operational Carbon'. Aluprof aluminium windows and doors play a crucial role in decreasing operational carbon emissions by improving the energy efficiency of buildings. The exceptional thermal insulation properties of our systems reduce the need for heating and cooling, thereby lowering energy consumption and the related carbon emissions.



*Grupa Kety re-smelting mill*

Additionally, the durability and minimal maintenance needs of aluminium contribute to the longevity of these systems, further reducing their environmental footprint. By opting for aluminium windows and doors, buildings can attain a more sustainable and reduced carbon footprint.

The Future Homes Standard is currently influencing construction practices in the UK by emphasising enhanced energy efficiency and reduced carbon emissions. With the implementation of updated building regulations, we are prepared to adapt to these more rigorous standards in collaboration with the industry. Furthermore, as a Patron Member of the Passivhaus Trust UK, we engage closely with specifiers and various organisations to minimise operational carbon in buildings. Our thermally efficient glazing systems and Passivhaus-certified products are specifically engineered to comply with these standards, providing exceptional insulation and airtightness to facilitate lower carbon emissions.

Our flagship MB-79N Window and Door System redefines industry standards. It delivers remarkable thermal insulation, integrating energy efficiency with a modern aesthetic. Additionally, it offers the flexibility to design larger openings with reduced sightlines. The system boasts a thermal performance rating of  $U_w$  from just 0.64 W/(mK) at 1700mm x 2700mm / Part L compliant system CEN size and Passive House level  $U_w$  values of 0.79W/m<sup>2</sup>K at CEN size.

Aluprof are proud to be one of Europe's largest aluminium systems companies. Specification support is available through the company's website at [aluprof.co.uk](http://aluprof.co.uk), directly from their UK head office in Altrincham or from their London office at the Building Design Centre by phoning +44 (0) 161 941 4005.

[www.aluprof.com](http://www.aluprof.com)

**ALUPROF**  
ALUMINIUM SYSTEMS

# DESIGNING WITH WATER? YOU NEED SPATEX 2025

**SPATEX**  
THE POOL, SPA & WELLNESS SHOW  
TUESDAY 4 - THURSDAY 6 FEBRUARY 2025  
COVENTRY BUILDING SOCIETY ARENA • COVENTRY • UK

SPATEX 2025 EXPLORES THE LATEST DESIGN TRENDS, MATERIALS AND TECHNOLOGIES SPECIFIC TO DESIGNING WATER FEATURES AND BUILDING IN A WATER LEISURE ENVIRONMENT

Held at the Coventry Building Society Arena, Tuesday 4th to Thursday 6th February, the UK's annual exhibition is your starting point to take a deep dive into the world of spas, wellness suites, swimming pools, steam rooms, saunas, enclosures and all the ancillary equipment.

Free to attend, with over a hundred exhibiting companies, including all the leading manufacturers and suppliers from around the world, SPATEX 2025 gathers under one roof the industry's key decision-makers. This is where all the conversations that will shape the water leisure market over the next 12 months will take place.

## Innovations

View and compare a host of new innovations., both for the commercial and domestic markets. See, touch and discuss the latest products and take advantage of exclusive show offers. A New Product Zone (sponsored by Swimming Pool News) highlights the products that look set to make the headlines.

## Get up to speed on regulatory requirements

With a free double seminar programme in two arenas offering over 40 talks by industry leaders, SPATEX answers the challenge of staying up to date on safety standards and compliance.

## Learn about sustainable and eco-friendly solutions

Promoting sustainability is a key priority. Discover eco-friendly technologies and practices, such as sustainable construction materials, which can be integrated into green building designs. Saving energy is high on the seminar agenda and in the products displayed on



*Designworks Tiles*



“

*SPATEX 2025 gathers under one roof the industry's key decision-makers.*

exhibitors' stands, where you can expect to see the latest heat retention covers, LED lighting, air source heat pumps and super insulated one-piece pools.

## Invest in yourself

Catch over 20 CPD-accredited interactive workshops in Arena 1 curated by the Institute of Swimming Pool Engineers (ISPE). Just one of many industry associations that SPATEX is fortunate to have the support of.

Expert advice - Gain the most up-to-date information from over a thousand industry professionals. Some things can only be done in person - bring your plans with you - there's no better place to seek impartial advice from a variety of specialists, and all for free.

Please visit the SPATEX Help Desk at the entrance to the exhibition hall if you need pointing in the right direction.

**Register now [www.spatex.co.uk](http://www.spatex.co.uk) SPATEX 2025 - Tuesday 4th to Thursday 6th February. The Coventry Building Society Arena, Coventry CV6 6GE with 2,000 free car parking spaces is within two-hour drive time of 75 per cent of the population. For more info: [helen@spatex.co.uk](mailto:helen@spatex.co.uk) Tel: +44 (0) 1264 358558**

# SPATEX

THE POOL, SPA & WELLNESS SHOW

**TUESDAY 4 – THURSDAY 6 FEBRUARY 2025**

*SPATEX represents all sectors of the water leisure industry from pools, spas, saunas to hydrotherapy, steam rooms and play equipment, in both the domestic and commercial arena.*

**FOR MORE INFORMATION AND  
TO REGISTER FOR FREE VISIT:  
[WWW.SPATEX.CO.UK](http://WWW.SPATEX.CO.UK) OR  
CALL +44 (0)1264 358558**



**COVENTRY BUILDING SOCIETY ARENA • COVENTRY • UK**

IMAGE COURTESY OF NIVEKO POOLS UK - [WWW.NIVEKO-POOLS.CO.UK](http://WWW.NIVEKO-POOLS.CO.UK)



# CIRCULAR CAMPUS AND COOKING CLUB

A DINING AND COOKING SPACE FOR AIR IN SINGAPORE

How do we transform fine dining from an exclusive, passive consumption experience into an active and shared journey? Can fine dining go beyond pleasure and inspire broader thinking about food and the environment, on topics such as responsible ingredient sourcing and food waste? OMA was tasked to design the dining and cooking space for AIR in Singapore - where these questions are addressed.

AIR is located on Dempsey Hill. Now a frequented art and lifestyle quarter, it was a nutmeg plantation in the mid-nineteenth century and a barrack complex between the 1860s and 1990s. The site of AIR is defined by its 4,000 sqm green space, and the modernist CSC Dempsey Clubhouse - built in the



“

*The visitors can also detour into the meandering paths of the garden – AIR’s farm where the visitors can learn about how food grows and taste the harvest.*

1970s for the sports and leisure activities of the civil servants. Here, nature is prominent and precious: all the trees with girths over one meter must be conserved according to the local authority. The CSC Dempsey Clubhouse - considered to have no specific historical value - can be freely reconfigured. This contrast prompted us to ask: Should we only preserve what is deemed significant and change everything else? Can architectural interventions articulate the cherished nature and the insignificant building into equally valuable elements? In the course, minimal changes can be made to the building to minimize construction waste.

In our design, the existing nature and the CSC Dempsey Clubhouse are the main components. A key architectural intervention is the 100-meter walkway - a new footpath between the clubhouse and one of Dempsey Hill’s main parking lots. This footpath replaces the originally narrow and hidden route that made the clubhouse inaccessible. Organic in form, it evokes the natural topography, while loosely defining the expansive green space into two zones: the garden on one side and the lawn on the other. From the walkway, the visitors can go directly into the clubhouse, which has now been transformed into the home of AIR. The visitors can also detour into the meandering paths of the garden - AIR’s farm where the visitors can learn about how food grows and taste





the harvest. Alternatively, they can wander into the lawn, where picnics and a variety of events take place. Along the walkway are patios that become sitting-out areas complementing the lawn.

The clubhouse is a modernist double-floor building defined by ribbon windows. On the first floor, the walkway extends into the interior to define the circulation space. The main dining space faces the lawn. Through an operable front façade, the originally enclosed first floor becomes a semi-outdoor dining

space with extended terraces connected to the lawn for meals in a casual atmosphere. At the rear is the open kitchen, where the process of making dishes is transparent to everyone. On the second level, glass replaces the original façade to create an indoor area overlooking the lawn. The visitors find here a more intimate dining area, and the research space for experimentations on ingredients - sometimes unsuspected. The cooking school at the rear of this level allows all the visitors to share cooking skills and knowledge of the ingredients from the garden.

Another intervention to the building is the cylinder. It consolidates the front-of-house and back-of-house programs, including the staircases for the guests and the staff, a bar, a kitchen, and a machine room. Positioned at the rear - away from the front façade - the newly installed cylinder indicates the coexistence of the old and the new.

AIR's fixtures and furniture have been designed by Andreu Carulla using recycled timber and plastic bottles (HDPE) sourced from a former art installation, as well as Styrofoam - commonly used in disposable food containers. These elements allude to the ethos of AIR to discover the potential and beauty in what is often perceived as waste.

With farming, picnic, wandering, cooking, learning, and dining simultaneously taking place at different locations, AIR is a campus where the conventional dining experience is challenged: rather than passive diners being served, the guests are active explorers of opportunities to eat well and have fun. A new and informal fine-dining culture is in the making in the creative platform.

[www.oma.com](http://www.oma.com)







# demista™

Clearly Perfect



## Reflecting high standards in bathroom design

In 1992 demista revolutionized the bathroom mirror market by introducing a heated mirror pad which adhered to the back of the mirror to prevent condensation from forming on the glass.

The inconvenience and frustration of these foggy mirrors was eliminated forever, giving you a clearly perfect steam free mirror without the need for time consuming wiping or costly cleaning products.

demista has been proven and accepted nationally and internationally and through its unique reputation and unblemished track record has been the number one choice for specifiers of mirror defoggers for over 26 years. A product range that is available in a large range of standard sizes to suit almost any mirror and bespoke sizes can be supplied if required.

In addition to being a trusted name for heated mirror pads, demista also offers electric underfloor heating solutions to offer clients a complete solution in bathroom design.




We've got everything covered!

demista products have been fitted in some of the worlds most prestigious properties and hotel developments, including The Burj Al Arab, The Royal Atlantis, Fairmont Dubai, The Intercontinental O2 and other high value developments in London

demista the original and trusted name for mirror heat pads and underfloor heating solutions throughout the world.

**To find out more please visit [www.demista.co.uk](http://www.demista.co.uk)**

 Telford Road  
Glenrothes  
Fife KY7 4NX

**T:** +44 (0)1932 866 600

**F:** +44 (0)1932 866 688

**E:** [sales@demista.co.uk](mailto:sales@demista.co.uk)

**Visit us online**  
[demista.co.uk](http://demista.co.uk)

## NEW SANIWALL PRO UP STYLE WITH STYLISH PANELS

Saniflo has expanded its Saniwall Pro Up range with a new model, Saniwall Pro Up Style, offering a choice of grey concrete or Carrera marble-patterned wall panels. These durable, lightweight panels are easy to install, requiring no preparation, and are 100% waterproof. They combine flexibility and strength from a polyethylene core and two aluminium layers. The panels provide convenient access for maintenance, with the bottom panel sliding out after WC removal and the top panel popping out when the flush button is removed.



The Saniwall Pro Up Style is ideal for bathrooms where traditional plumbing isn't feasible. Its concealed unit includes a macerator pump with a dual flush system, using Grohe cistern technology, and accommodates all wall-hung WCs. It can pump waste up to five meters vertically and 100 meters horizontally, supporting a complete shower room installation with four inlets. Adjustable feet allow for variable pan heights. The unit also comes with an extended warranty of up to five years.

For further information visit [www.saniflo.co.uk](http://www.saniflo.co.uk)

Inspiration,  
Made in the Kitchen.  
Creativity begins at home.

**SieMatic**  
CHICHESTER

team@siematic-chichester.com | Tel. +44 (0) 1243 532353  
[www.siematic-chichester.com](http://www.siematic-chichester.com)

**Purest WATER BY AQUATIERE**

### AQUATIERE PUREST WATER SYSTEM

Superb quality water from every tap in the home

- Compact & easy to install
- Five pre-engineered solutions for different configurations
- Three levels of core filtration with advanced options on request.
- Latest unique vortex technology.
- Effective scale control throughout the home.
- Removes Fluoride, Chlorine, Prescription medicines, and microplastics. Combats PFAS (forever chemicals)
- Better hydration
- Healthier skin and hair – improves skin conditions caused by hard water.
- Added magnesium and molecular hydrogen for well-being
- Can be combined with a water softener.
- Minimal Maintenance – Fit and forget for 12 months

[www.aquatiere.co.uk/shop/purest-water/](http://www.aquatiere.co.uk/shop/purest-water/)

## SCHLÜTER-LIPROTEC SHINES A LIGHT ON INTERIOR DESIGN

Schlüter-Systems has strengthened its portfolio of bathroom systems for the UK domestic market through the availability of advanced control light technology which enhances aesthetics



whilst also offering almost unlimited creative choice.

Encompassing the latest LED technology, Schlüter-LIPROTEC creates restful lighting for relaxing spaces, or bright, colourful lighting for a busy family bathroom or kitchen.

Schlüter-LIPROTEC has a broad range of applications, from direct or indirect lighting effects, enabling the interior designer, architect or property owner to illuminate feature walls, pictures, tiled areas such as shower enclosures or study spaces, kitchen countertops and stairways; in fact, anywhere the creative mind can conceive a plan for.

The collection offers the option of neutral white, warm white or RGB+W LEDs; the latter allowing for coloured and white LEDs on a single strip, to generate coloured light or temperature-controllable white light, which can be selected from 2500 K to 6500 K. The system can be programmed to deliver a choice of 16 million colours via a Bluetooth app and remote control.

For further information, call 01530 813396 or visit [www.schluter.co.uk](http://www.schluter.co.uk)

## TILE OF SPAIN

Small in size but big on impact, Kit Kat and mosaic tiles provide a unique, decorative appearance that allows designers to be creative and produce visually striking interior schemes. Tile of Spain's manufacturers offer a wide range of mosaic and Kit Kat tiles that, thanks to their small format, variety of colours, textures, and patterns, leave a big impression, delivering distinctive and transformative spaces.

Perfect for giving walls definition and texture, Kit Kat tiles are thin, finger-like tiles that are admired for their sleek, streamlined look.

Suited to a variety of interior design schemes, the thin tiles can be arranged vertically or horizontally to create unique and eye-catching focal points.

Mosaic tiling was an ancient art form practiced in many ancient cities of Spain and all over the world to create striking masterpieces.

Today, mosaic tiles are still a popular choice amongst designers and homeowners



because of their graphic visual appearance, adding contrast and depth to any space. Creating a balance between function and aesthetics, mosaic tiles may be used all throughout the home, including floors, showers, kitchens and outdoor spaces, instantly adding interest and texture.

Tile of Spain's manufacturers offer a wide variety of options allowing designers to spark their creative flare, ensuring there is no limit to the amount of customisation that can be incorporated into interiors.

[www.tileofspain.com](http://www.tileofspain.com)

## BRINGING TOGETHER THE BEST OF BOTH BRANDS

NYMAS Group, the specialist provider of design-led and accessible washroom accessories, sanitaryware and Doc M packs, is announcing its rebrand to Fitzroy of London, a popular bathroom brand which has previously been offered under the NYMAS Group umbrella.

Having been established over 20 years ago, NYMAS Group has decided to give the business a refresh, bringing together the best of what both brands have to offer and presenting a unified, stronger identity for its customers. Whilst the name and brand are changing, the company's dedication to providing high-quality products and exceptional service will remain the same.

Fitzroy of London's products have been crafted with the utmost integrity and designed to blend effortlessly into both classic and contemporary interiors. Having been developed by designers and specified into some of the most iconic venues in the world, Fitzroy of London blends distinctive design and exquisite craftsmanship with uncompromising inclusivity.

Whilst continuing to offer the same trusted products as before, as the company transitions to Fitzroy of London, three product ranges will be introduced to the market, PRO, STYLE and SIGNATURE, with various collections available within each range.

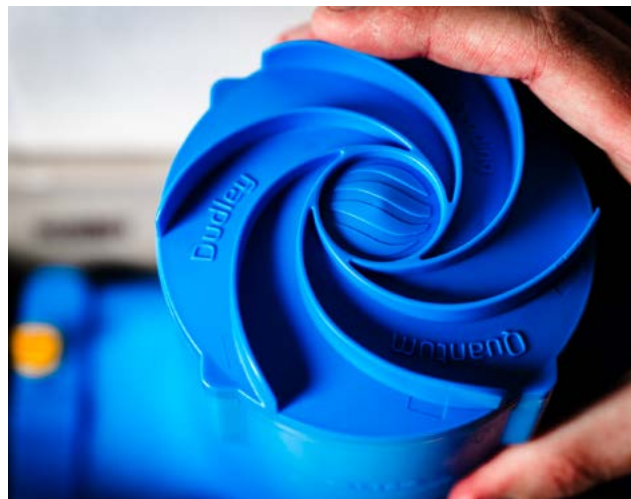


"Our mission, originally as NYMAS Group and now as the rebranded Fitzroy of London, has always been to make bathing safe, accessible and dignified for all. Our range of high-quality and stylish accessible bathrooms blend functionality with design, proving that inclusivity can be both beautiful and empowering, elevating comfort without compromising on aesthetic."

- Craig Anderson, MD, Fitzroy of London

[www.fitzroyoflondon.com](http://www.fitzroyoflondon.com)

# THOMAS DUDLEY SIGNALS THE END OF THE LEAKY TOILET VALVE



According to the recent Leaky Loo report around 4.1% of all toilets in the UK are leaking, that equates to around 1.5 million toilets!

That is enough water to fill 158 Olympic sized swimming pools or to put it another way, enough water is leaking from toilets in the UK to fill over 4 MILLION baths EVERY SINGLE DAY.

That is a huge amount of wasted water.

With over half of this wasted water leaking from faulty flush valves, Thomas Dudley has invested time & resources to develop a solution to the leaky flush valve.

Thomas Dudley the UK's leading innovator in plumbing solutions, proudly announces the launch of Quantum, its groundbreaking all new Pushbutton Operated Leak-Free Syphonic Toilet Flush Valve. This state-of-the-art product represents a significant leap forward in toilet flushing technology, offering unparalleled efficiency, reliability, and water conservation.

## Quantum's key Features:

**Innovative Pushbutton Operation:** Quantum is the first button operated mechanically activated syphon and comes equipped with a user-friendly pushbutton mechanism [available in various styles].

**Leak-Free Syphonic Technology:** Designed and engineered in the UK with precision, Quantum incorporates advanced syphonic technology that lifts water with no power assistance to eliminate leaks and minimise water wastage. The leak-free design enhances the durability of the valve and contributes to water conservation efforts.

**Water Conservation:** Thomas Dudley is committed to sustainability, and the new Quantum Leak-Free Syphonic Toilet Flush Valve reflects that commitment. By utilising the leak-free benefits of a syphon, coupled with the ease of the pushbutton mechanism of a flush valve, Quantum optimises water usage by eliminating leaks without compromising performance, Quantum helps to reduce environmental footprints and lower water bills.

**Durable Construction:** Crafted from high-quality materials, Quantum is built to withstand the rigors of daily use. Its robust construction ensures longevity, making it a reliable and cost-effective choice for residential, business, and commercial applications.

Chris Slezakowski Thomas Dudley Plumbing Products Business Unit Director said:

"We are thrilled to introduce Quantum, the first in a new line of Pushbutton Operated Leak-Free Syphonic Toilet Flush Valves, a testament to our commitment to innovation and sustainability. This product not only redefines the flushing experience but also addresses key concerns related to water conservation and reliability. At Thomas Dudley, we believe in providing solutions that make a positive impact, and Quantum is a prime example of our dedication to excellence."

Thomas Dudley has worked closely with Lecico Bathrooms to bring the Quantum Flush Valve to market.

**If you would like to find out more about Quantum then please email: [info@thomasdudley.co.uk](mailto:info@thomasdudley.co.uk)**

**Visit the Thomas Dudley website at [www.thomasdudley.co.uk](http://www.thomasdudley.co.uk)**

# Dudley

## **NEW** QUANTUM

THE **WORLD'S FIRST** PUSH BUTTON SYPHON



Leak-Free  
Syphonic  
Technology



Optimises  
Water Usage



Easy  
Installation &  
Maintenance

 **MADE IN BRITAIN**®



# THE SENTOSA SENSORYSCAPE

SERIE ARCHITECTS + MULTIPLY ARCHITECTS

The Sentosa Sensoryscape is a 350m sensory walk through Singapore's Sentosa Island. As the first phase of a decades-long masterplan to transform Sentosa and Pulau Brani into a major leisure and tourism destination, this multi-sensory walk will link Resorts World Sentosa (RWS) in the north to Sentosa's beaches in the south. Located on a steep and narrow ridgeline the project is designed as a step-free, universally accessible corridor that will allow visitors of different abilities to move comfortably from RWS to the beach.

Christopher Lee, Principal of Serie Architects describes the Sensoryscape as "...an ecological walk punctuated by six unique sensory gardens.



“

*Each sensory garden is designed to be accessible from the lower walkway - this created an unusual structural challenge.*



Acting as both a connector and attractor, the walk is composed of a two-tiered walkway. The upper walkway is supported by a series of ‘hammock’ structures that serve as seats and provide a playful rhythm to the scheme. The six sensory gardens are designed to reveal the site’s unique ecological qualities both day and night. This includes three woven basket-like structures that provide different sensations to the walk. The structure of each open pavilion has a distinct expression yet remains part of the collection.”

Each sensory garden is designed to be accessible from the lower walkway - this created an unusual structural challenge. The solution was to create a series of interwoven strands to form a basket with dilated openings. As the diagrid and its infill elements are self-similar but not identical, a parametric design was adopted.





The lightness and leanness of the diagrid structures allow nature, views, and light to permeate. At night the spaces are transformed into surreal ridge and reef-like environments, enabled by digital light art and augmented reality.

'Tactile Trellis' contains a large vessel structure formed of petal-like precast concrete elements. The material composition, with a delicate mix of textures and aggregates, complements the garden's variety of plant species. Seats of various sizes allow visitors to rest amongst the plants while the vessel's concrete surfaces serve as a canvas for projections and an interactive light display at night. 'Scented Sphere' features concentric 'stalks and buds' that suspend fragrant flowers. The vessel is a grid shell structure comprising four woven steel strips that form the stalk and bud. Species in this garden are selected for their unique scent and curated to ensure a year-round scent palette.

'Symphony Streams' features a polyphonic water fountain featuring over 200 acoustic water pails. Water cascades from pail to pail with differing pitch, creating the rhythmic sound of a waterfall. At the base of the structure, a circular ring-shaped pool allows visitors to interact with the flowing water. 'Glow Garden' is a plaza cradled by giant illuminated 'stalk' structures. At the tip of these stalks are 'buds' that at night create a promenade of light leading visitors from Sensoryscape to the beach beyond. From Beach Station, the stalks frame a dramatic entry plaza to the site.

[www.m-ply.com.sg](http://www.m-ply.com.sg) / [www.serie.co.uk](http://www.serie.co.uk)



## HIGH QUALITY TIMBER WINDOWS AND DOORS FOR YOUR PROJECT

The Sash Window Workshop specialise in high quality timber windows and doors for renovations, extensions, and new build projects. The company manufacture windows and doors in Bracknell, Berkshire. They offer a supply only service nationwide, with an installation service across London and Southern England.

In addition to sash windows, The Sash Window Workshop also manufacture casement windows, external doors, and secondary glazing. If the window frames are in a good condition, for supply and installation, they offer a service to replace the sashes into the existing window frames.

The Sash Window Workshop have over 30 years' experience collaborating with architects and contractors on a wide range of properties. They pride themselves on providing tailor made solutions to suit your requirements.



They pride themselves on providing beautiful, energy efficient timber windows and doors, along with excellent customer service.

The materials used enable The Sash Window Workshop to produce windows and doors to the highest specifications, giving the best possible performance and combining minimum maintenance with maximum lifespan. They use Accoya which is a sustainably sourced timber that is durable, stable, and comes with a 50-year anti-rot guarantee.

The Sash Window Workshop believe it is important to be an environmentally responsible business. They review their carbon emissions every year and believe they were the first window company in the UK to achieve Carbon Neutral Plus status.



The company are also FSC Certified, FENSA registered, and Safe Contractor approved.

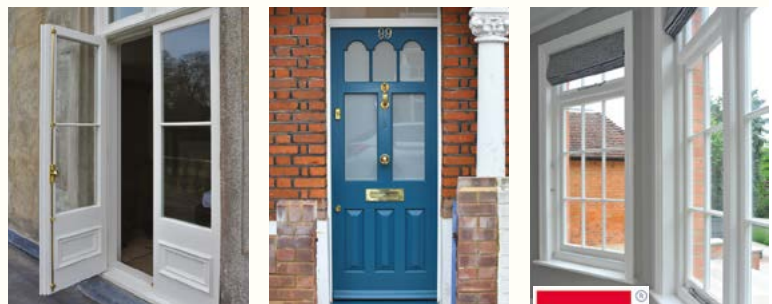
**To obtain a quotation for your project, contact The Sash Window Workshop today on 01344 868 668 or email [info@sashwindow.com](mailto:info@sashwindow.com). You can also visit their website: [www.sashwindow.com](http://www.sashwindow.com).**



## Beautiful Traditional Timber Windows and Doors

*Beautiful, Accoya windows and doors for new builds, extensions, and renovation projects.*

- Supply only or supply and install.
- 50 year anti-rot guarantee.
- Sustainably sourced timber.
- Conservation Area specialists.



**THE SASH WINDOW WORKSHOP**

**01344 868 668**

**[www.sashwindow.com](http://www.sashwindow.com)**



---

# TOUCH

## IRONMONGERY LTD



[www.atouchofbrass.co.uk](http://www.atouchofbrass.co.uk)

210 Fulham Road, Chelsea London SW10 9PJ

# CELEBRATING 40 YEARS

---

## One of London's leading Architectural Ironmongers

Originally called "A Touch of Brass", TOUCH changed their name in 2003 in reaction to advancing market changes in architectural Ironmongery to reflect the broader range of products and finishes that they sell.

In fact today Touch supply 20 different finishes including Brass, Satin Brass, Polished Chrome, Polished Nickel, Satin Nickel, Copper, BMA, Antique Brass, Black, Pewter, Ceramic, leather, Stainless Steel, Satin Stainless Steel, Gun Metal & 4 different shades of Bronze and the list keeps growing. Whatever finish you require, Touch can help you get the right look.

Touch occupy their recently refurbished showroom at 210 Fulham Road, Chelsea, where they stock and display a vast range of their 5,000 products. With a customer base including Architects, Interior Designers, Builders and private Individuals who are interested in the quality end of the Ironmongery market, the company also have a healthy export market to all corners of the world, namely the Middle East, Europe and the Americas.

Touch Ironmongery's owner and founder, Bill Benham, has 42 years' experience in the Ironmongery trade, as does his colleague Jim Haselup. Saleem Qureshi is the newest member of our team and has 21 years' experience, meaning their knowledge is unrivalled in this industry.

The range of products supplied by Touch date from circa 1640 French (Louise XIV) and cover all subsequent periods (Georgian, Edwardian & Victorian), Art Deco and contemporary pieces also make up the product ranges.

Touch showcases the very best of British manufacturing; the best ranges are still produced in the Midlands by craftsmen in factories dating back 200 years or more.

Touch Ironmongery have recently become suppliers for **Designer Doorware (Australia)** Who have beautiful products with a cutting edge design Metal, Wood and concrete. We also have the exclusive rights to sell the **Olaria (Barcelona)** range in the UK.

Olaria make all our bespoke products, they have incredible levels of workmanship.

Touch also sell European manufactured goods which are considered to be of a very good quality.

With trends continuously evolving new and innovative products are constantly under development.

Touch understand that keeping up with the fashion-shifts is imperative in order to provide every customer with the best solution for their requirements.

Ironmongery can be a difficult and complicated aspect of a building project, as a result Touch aim to take this awkward aspect and make it user friendly and clear to understand by offering an on-site service where they carry out a detailed door by door, window by window, room by room Ironmongery schedule, highlighting all requirements and identifying all requirements.

Restoration is a large part of the business Touch will undertake complete Ironmongery refurbishment projects, and can restore old paint covered door furniture to their former glory, looking as good as new again at a fraction of the cost to replace.

**For more information about Touch Ironmongery or to arrange a showroom visit please call 0207 351 2255 or alternatively visit [www.atouchofbrass.co.uk](http://www.atouchofbrass.co.uk)**



## BRITISH & EUROPEAN MANUFACTURERS SUPPLYING THE FINEST QUALITY IRONMONGERY

Touch combine traditional skills with modern manufacturing techniques to produce the most beautiful, quality fittings, built to stand the test of time.

As well as specialist bespoke items, Touch supply over 1000 products, available in 23 different finishes to furnish high end residential and commercial properties, royal palaces, government houses, historic castles and stately homes.

Olaria, available from Touch Ironmongery

[www.atochofbrass.co.uk](http://www.atochofbrass.co.uk)  
& [www.olariabarcelona.com](http://www.olariabarcelona.com)





# DESIGNING A STYLISH ENTRANCE WITH ALUMINIUM

MANAGING DIRECTOR AT WERU UK GRAHAM LINDSAY DISCUSSES HOW ALUMINIUM ENTRANCE DOORS CAN BE A BESPOKE SOLUTION IF YOU WANT TO CREATE A TRULY UNIQUE FRONT DOOR

## **A Premium Product**

No longer an afterthought, front doors are now becoming a key design choice. Many homeowners are now choosing a stylised aluminium door, with unique features such as auto locking, bespoke RAL colour tones and LED lighting. An aluminium entrance door is a high-value item, but the wrong choice could incur the need for replacement in less than 10 years. If you are willing to look at the higher end of the market, you will have an investment for life as well as the wow factor. At Weru UK, we are proud to offer a range of aluminium doors that bring stylish kerb appeal along with the unrivalled quality that comes with true German engineering, to make an entrance to be proud of.

## **Complete Design Freedom**

A front door forms the first impression of your home, and an aluminium entrance door will enable you to make yours stand out from the crowd.

Endless customisation options offer the opportunity to create a truly unique and entirely bespoke entrance, ranging from design to colour and finish. Side panels can be built in to incorporate feature glazing, there are hundreds of different types and sizes of handles to choose from and you can even select your style of door hinges with an aluminium door. At Weru UK, we also offer a huge variety of finishes to make your door individual to you - light or dark colours, stone, iron, slate, wood and more. Corten, which looks like weathered steel, is currently trending.

## **Strength of Aluminium**

Another major selling point of aluminium is that it is inherently strong, meaning it can support large glass panes, facilitating increased natural light while creating a modern aesthetic. You can even choose sandblasted glass with a Weru door, which offers privacy whilst not restricting light penetration into your home.

“

*An aluminium entrance door is a high-value item, but the wrong choice could incur the need for replacement in less than 10 years.*

An aluminium door is very much a door for life. Much thicker than a composite door, our aluminium models can measure up to 10cm thick, providing unmatched strength and robustness. This also allows for quadruple glazing, if you want to incorporate a decorative glass element into your design.

### Insulation Properties

A great choice for the energy-savvy, aluminium doors are among the best on the market for their insulation properties. With a strong design appeal and outperformance for durability and strength, Weru aluminium doors feature a high level of thermal efficiency with ThermoPlus insulation. If your door design features decorative glass, our quadruple glazing will still ensure excellent thermal performance.

**Security Features and State-of-the-Art Technology**  
With state-of-the-art technology and quadruple glazing as standard, aluminium entrance doors can have a wide range of security features, increasing your confidence in the safety of your home.

As well as a deadlock, AutoLock technology means that once your door has simply been pulled to, up to four latch bolts secure the door fully automatically proving highly effective against break-in attempts. Biometric entry with a finger scan on the door handle is popular with our customers, and with modern technology, it is now even possible to open your front door through a mobile app.



Our ATRIS-life traditional door models allow a property to maintain its traditional integrity, yet enhance the thermal properties and security features of a home. These models combine elegant, timeless shapes with decorative elements. Characteristic features are the glazed sections in the traditional style, as well as the hand-crafted glass art, facets or ornamental mouldings.

Weru UK is based at Amy Johnson Way, Squires Gate, Blackpool and was established more than 38 years ago. The business serves a UK-wide client base with its unrivalled approach to installation and customer service, from its national support centre and impressive 8000sq ft showroom.

**For more information about Weru UK, visit <https://www.weru.uk/> or call 01253 341444.**





# HES2 Concealed Hinge. Innovation, Reinvented

At Sugatsune, product innovation is never the end of a journey. Every breakthrough is the start of a new one. For us, innovation is the drive to never settle for what you already have. It's a state of mind, the urge to push even further.

30 years have passed since we first launched one of our proudest innovations, the HES concealed hinge. A genuinely revolutionary concept, the original HES3D reimagined the very concept of a concealed hinge, based on a reengineered classic hinge design, and in the process opened the door to previously inaccessible use cases for concealed hinge technology.

The HES range has become one of our best sellers and a flagship product, winning multiple awards along the way. But we haven't sat on our laurels to admire our achievements. The innovations have kept on coming.

Nowadays, there's an HES hinge for practically every architectural application. And with the latest HES2 model, we've made installation simpler and more accessible than ever.



## Pivot Away

The big breakthrough with the original HES design was the removal of the pivot arm that the previous generations of concealed hinges had relied on. The pivot arm meant concealed hinges could be installed directly to the inside panel of a cabinet, without the need for a frame. Overlay and inset door types could be accommodated.

But there was a downside. Concealed hinges worked for cabinets. But what about interior two-way doors? You couldn't 'conceal' a hinge in the same way by hiding it inside a cabinet. And often door frames were too narrow for the elongated arms anyway.

By reimagining the classic butt hinge so the central barrel tucks away in recesses within the footprint of the hinge itself, the HES design is compact enough to fit on a typical door frame, but folds away in on itself so it is totally out of sight when the door is closed.

What is more, with the removal of the pivot arm, the HES design is stronger and more robust. As well as being suitable for interior doors, it can handle heavyweight doors up to 125kg. There are now HES hinges available for everything from the smallest cabinets all the way up to the largest interior doors, making it the only concealed hinge range on the market suitable for all architectural applications.

## Simplicity on the Surface

For all the aesthetic and functional benefits of the original HES design, it came at a cost. Door hanging is a tricky job at the best of times. With the original HES models, you had to mortise both the door and the frame/cabinet panel.

The big step forward with the HES2 version is surface mounting. You only have to mortise the door, halving the time and effort it takes to install. On the frame, it's just a case of screwing on a plate.

For simplicity and convenience, all HES hinges separate. Once the door is mortised and the door plates are installed, we provide templates for pre-drilling the frame to further support speed and accuracy. The frame plate is clipped into the door plate before being screwed



onto the frame. Once mounted, adjustment screws allow for vertical and depth alignment of up to 3mm for a perfect finish.

The surface mounting on the frame also means that the HES2 can also be fitted to slim framed or even frameless doors where there is not enough wood to mortise into. So even more door types can benefit from the flawless aesthetic of a concealed hinge.

The HES2 continues the tradition of pioneering concealed hinge concepts Sugatsune began 30 years ago. Our 3D-adjustable surface-mounted concealed hinges remain the only products of their type available on the market.

Not that the HES2 is alone. At the same time we launched this hinge, we also unveiled the HES1. Designed for frames as little as 8mm in width, the main selling point of this version is the incredibly snug fit between door and frame/wall. While not technically concealed - the mortising on the frame includes cutting out the front elevation so the mounting plate is visible in profile when the door is closed - the flush finish means it is easy to make the plate all but unnoticeable for a pristine effect.

One thing we can't hide at Sugatsune is our dedication to pushing the boundaries of functional and aesthetic design. 30 years on, the HES range is a dynamic concept that we keep evolving. It already provides simplicity and tasteful convenience to most types of cabinet and architectural doors. Where next?

SUGATSUNE

Since 1930

# Hinge Innovation Door Evolution



Only Sugatsune



Japanese manufacturer of  
**LAMP** and **ZweiL**  
branded products

FURNITURE, ARCHITECTURAL,  
MARINE AND INDUSTRIAL HARDWARE

Unit 635, Wharfedale Road, Winnersh  
Triangle,

Wokingham, RG41 5TP

Tel: 01189 272 955

Email: [sales@sugatsune.co.uk](mailto:sales@sugatsune.co.uk)

[www.sugatsune.co.uk](http://www.sugatsune.co.uk)

# GARADOR

*The Garage Door People*

## Precision Engineered and Fully Insulated Sectional Garage Doors

Choose from the full range of garage doors.  
Visit us online at [www.garador.co.uk](http://www.garador.co.uk)

CALL  
01935 443722  
TO DISCUSS  
YOUR PROJECT



- 1** 42mm fully insulated door sections ( $U = 1.30 \text{ W/m}^2\text{K}$ ).
- 2** Rubber seals on sides, floor and fascia of door.
- 3** Full drive-through width and height.

**CLEMENT**<sup>®</sup>  
*creating light... beautifully*<sup>™</sup>

STEEL WINDOWS | DOORS | SCREENS | ROOFLIGHTS

[clementwindows.co.uk](http://clementwindows.co.uk)  
01428 643393



### Furniture, Architectural and Industrial Hardware from SD Products

SD Products Ltd is a third generation family owned business with over 40 years of experience as a stockist distributor of specialist fasteners. The corner stones of our business are Quality Products at Competitive prices with Service and Supply requirements tailored to our customers' needs.



We are proud to hold an extensive range of premium precision engineered components, supplying the furniture, architectural, industrial and marine sectors. Professionals from across a wide range of industries – architects, builders, cabinet makers, interior designers and manufacturers trust in us to deliver the quality and reliability they expect.

Our product lines make extensive use of stainless steel, a material favoured by engineers and customers alike for combining strength and durability with an attractive polished finish. Simple, contemporary and effective, stainless steel is the perfect reliable, low maintenance choice for everything from straightforward decorative hardware to more complex mechanical components. We are increasingly rolling out distinct and eye-catching finishes, including the highly popular matt black.

[www.sdproducts.co.uk](http://www.sdproducts.co.uk)



## AN EXCLUSIVE FIRST LOOK AT TWO NEW CROFT LAUNCHES

British luxury hardware brand, Croft, was delighted to exhibit for its fourth year at Decorex last month. Presenting its exquisite portfolio of hardware, a stunning collection of the company's signature products were on display, with the exciting introduction and first glimpse at two new launches.

Manufacturing the finest door, window, cabinet and interior fittings, a beautifully curated selection of Croft's portfolio was showcased, demonstrating the exceptional and extensive choice of designs available.

From the refined Legacy and Brooklands collections, inspired by the iconic racing cars of the 1950s to the classically timeless Elegance collection, Croft presented

some of its best traditional pieces for visitors to discover. Distinctive in both design and feel, the Icon collection was also showcased alongside more modern collections, including Avenue and the industrial-inspired Fusion. Classic knobs, roses and backplates as well as Window and Entrance Door products completed the stunning exhibition display.



Offering an exclusive first look to visitors, Croft also unveiled two new launches at Decorex. A Narrow Espagnolette and the new Textured Collections that include Bark, Shell and Stone.

As a proud British, family-run company, Croft has been a leading name in architectural hardware in the UK since 1868, designing and handcrafting a diverse portfolio in over 25 different finishes and patinas.

[www.croft.co.uk](http://www.croft.co.uk)

## PREVENTING FINGER-TRAPPING ACCIDENTS

Did you know 30,000 people trap and seriously crush their fingers in doors every year, according to RoSPA? And over 1,500 of these incidents, particularly involving children, will need surgery.

### Who's at Risk of Finger Trapping?

Although finger-trapping accidents are more common with children under five, older people and those with additional needs, a painful finger-crushing incident can happen to anyone. And every door presents a potential risk.

### How to Prevent Painful Finger-Trapping Accidents

Finger amputation and lasting damage to finger bones, joints and tendons can be avoided by assessing risk and making the hinge side of doors safe with Finprotect Plus finger protection guards. Quick and easy to install, once fitted, they'll keep fingers safe year after year.

### Finprotect Plus Finger Protection Guards

Our Finprotect Plus range has been successfully tested and assessed to BS EN 1634-1:2014, so can be installed on fire-rated doors and provides fire protection regardless of the fire exposure direction. To order visit [www.zeroplus.co.uk](http://www.zeroplus.co.uk) or call 01785 282 910 today.



## Prevent Painful Finger-Crushing Accidents

Did you know that 30,000 people trap & seriously crush their fingers in doors every year? And over 1,500 of these accidents will need surgery?

### Finprotect Plus Finger Protection Guards Hanging-Side Protection

- ✓ Stop fingers from entering the hinge-side of a door
- ✓ Suitable for fire & standard doors
- ✓ Fire tested to BS EN 1634-1:2014
- ✓ Concealed fixing
- ✓ Quick & easy to fit



[zeroplus.co.uk](http://zeroplus.co.uk)  
01785 282910

**ZEROplus**

# FLUSHING NON-FLUSHABLE ITEMS

## THE IMPACT ON INFRASTRUCTURE

As architects, builders, and property developers, understanding the implications of flushing non-flushable items is crucial for sustainable design and construction. Flushing inappropriate products can lead to severe consequences for our sewer systems, wastewater treatment facilities, and septic systems, ultimately impacting the health of our environment and communities.

### Increasing Strain on Sewer and Drainage Systems

Despite significant investments in infrastructure, our sewer and drainage systems are becoming increasingly strained. The growing population contributes to a rising volume of waste entering these systems. Research by the Marine Conservation Society reveals that between 1.5 billion and 2 billion sanitary items—including tampons, nappies, and wipes—are flushed each year. This alarming statistic highlights the urgent need for solutions that can alleviate pressure on our infrastructure.

### Understanding the Challenge of Non-Flushable Items

Unlike toilet paper, which is designed to break down easily, non-flushable items are made to absorb moisture. When introduced into sewer systems, these products swell and become entangled with fats, oils, and grease (FOG), resulting in blockages that can compromise system efficiency. The consequences of this issue can be significant:

- **Increased Maintenance Costs:** Frequent blockages lead to costly repairs and emergency clean-up efforts, placing a financial burden on municipalities and taxpayers.
- **Environmental Hazards:** Untreated sewage can spill into streets and waterways, causing environmental degradation and health risks for local communities.
- **Infrastructure Integrity:** The ongoing need for maintenance can result in long-term damage to sewer systems, necessitating more extensive and expensive repairs.



### Introducing Enviro Eco Traps: A Solution for Sustainable Development

Having tested numerous designs during product development, Enviro Eco Traps offer innovative solutions to mitigate the negative impact of flushing non-flushable sanitary items. Enviro Eco Traps are designed to sit in the drain run and intercept non-flushable sanitary items. The trap holds these items within the box or tube so it can be emptied and the waste disposed of as and when required.



“

*Despite significant investments in infrastructure, our sewer and drainage systems are becoming increasingly strained.*

**The Trap Box:** Ideal for new builds, this device is installed within an inspection chamber in the drainage run. Its filtration captures non-flushable items while allowing natural waste and toilet paper to flow through smoothly, preventing blockages and reducing sewage spill risks. By incorporating these traps into your designs, you can enhance the sustainability and efficiency of your projects.

**The Trap Tube:** Designed for retrofitting in existing drainage systems, the Trap Tube fits easily into current inspection chambers. Its tapered design allows for effortless removal and replacement. Like the Trap Box, it filters drainage flow to ensure only biodegradable waste is able to pass through, making it a practical and effective solution.

### Building a Sustainable Future

By integrating Enviro Eco Traps into your architectural and development projects, you can play a vital role in reducing environmental and infrastructural challenges associated with flushing inappropriate items. These traps not only safeguard sewer systems but also contribute to cleaner waterways and healthier communities. As professionals in the field, it's essential to promote awareness about proper flushing practices to ensure the longevity and efficiency of our sanitation systems, ultimately leading to a more sustainable future.

Flushing products other than toilet paper can have serious consequences for our sewers, wastewater treatment plants, and septic systems. These failures can lead to the discharge of raw and partially treated sewage into our coastal watersheds, resulting in the pollution of local waterways and posing a risk to public health.

## ENVIRO ECO TRAPS CAN HELP STOP THIS DAMAGE



Enviro Eco Traps are designed to sit in the drain run and intercept non-flushable sanitary items. The trap holds these items within the box or tube so it can be emptied and the waste disposed of as and when required.

### THE TRAP BOX

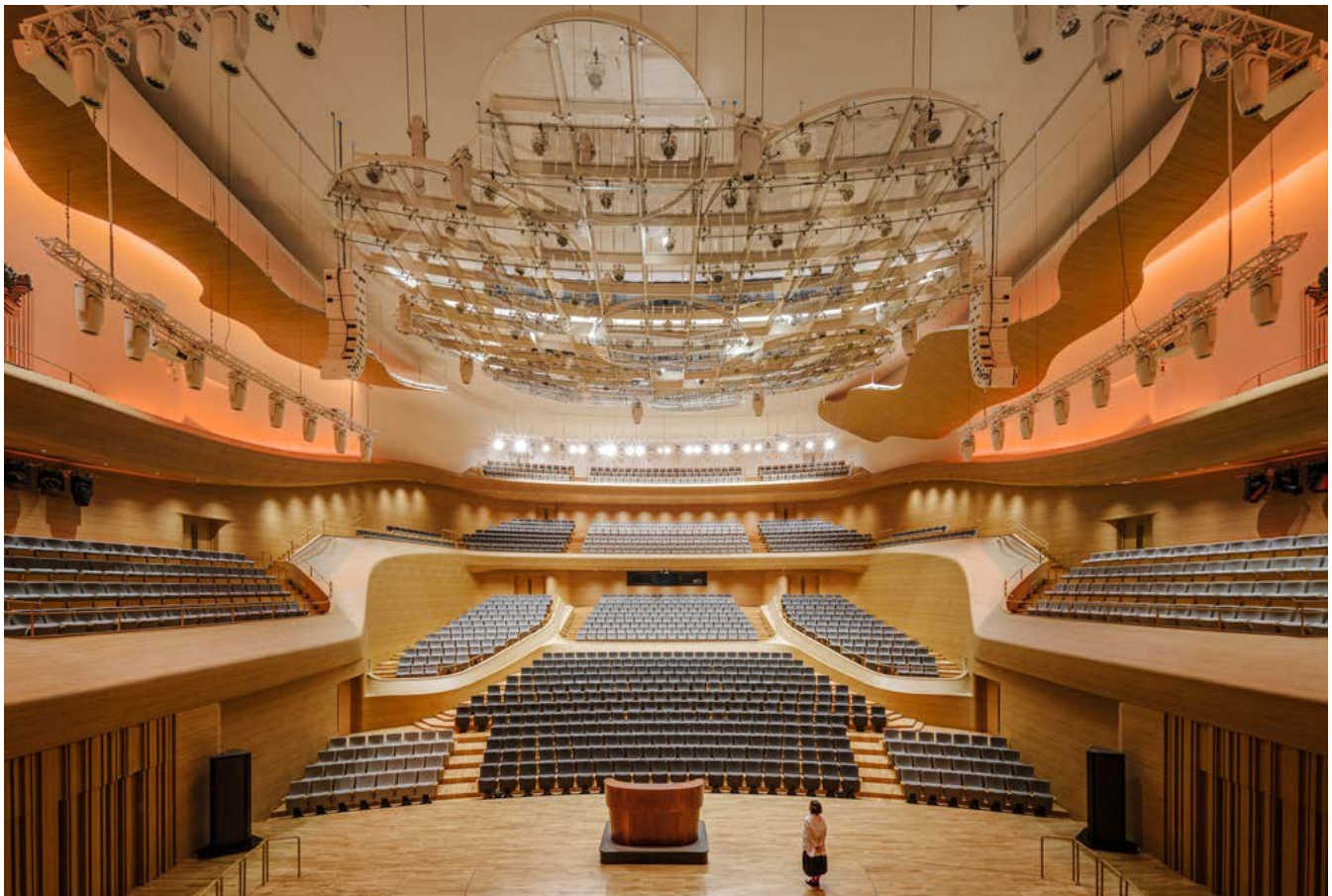
Designed with new-builds in mind, the Enviro Eco Trap box is installed inside an inspection chamber within the drain run. The filtering action of the trap intercepts and holds any items that should not have been flushed but allows natural waste and toilet paper to pass through as normal.

We also produce a slimmer “above ground” trap box which can easily be incorporated into the individual soil pipe runs from each property in apartment buildings.



### THE TRAP TUBE

Accessed via an existing inspection chamber, the trap tube is ideal for retro-fitting in drainage systems that are already live. The trap tube has a tapered shape so it is easily removed and replaced using the supplied cable or rod. As with the trap box, the trap tube filters the drainage flow, allowing only natural waste and toilet paper to pass through. Both the trap box and the trap tube are easy to empty.



# BEIJING PERFORMING ARTS CENTRE

SCHMIDT HAMMER LASSEN + PERKINS&WILL

China has opened a new performing arts complex in Tongzhou, a historic port on the Grand Canal and the eastern gateway to Beijing. Designed by Perkins&Will's and Schmidt Hammer Lassen's combined Shanghai studio with a landscape by SLA, the Beijing Performing Arts Centre anchors Tongzhou's recently designated cultural district, a collection of major civic projects that also includes a museum, a library, and extensive parklands. Consisting of three world-class venues—an opera house, a theater, and a concert hall—as well as a multipurpose hall and an outdoor stage, the Beijing Performing Arts Centre will host hundreds of performances each year—everything from traditional Chinese and Western operas to orchestral performances, stage dramas, and dances.

"We have always referred to this project as the containers for culture," says chief architect, Chris Hardie. "Inspired by the storehouses that once held materials and food for transport into Beijing, we now create storehouses for local and global culture, a focal point for Beijing's dedication to the arts." Designed to cultivate community while promoting the health and well-being of visitors and the



environment, the project embodies the site's storied history and its bright future in a subtle poetic expression. Conceived as lanterns for the performing arts, the buildings recall Tongzhou's importance as a commercial shipping and storage hub by referencing the rooflines of the storehouses that formerly lined the canal's banks and the sails of traditional canal boats.

“

*Although each building’s design serves a specific function, their forms are complementary.*

The forms simultaneously evoke a theater curtain parting at the beginning of a performance. A broad plinth, accessed from all directions by splayed steps and ramps, unifies the complex. This elevated platform extends the buildings’ lobbies into the surrounding forested park, setting up the relationship between the interiors, the landscape, and the Grand Canal.

“Although each building’s design serves a specific function, their forms are complementary,” says project director, Chao Chen, adding that the interior of the opera house, for instance, is shaped for optimal acoustics. “They work together to achieve this pleasing suggestion of lanterns at the water’s edge.”

Constructed in sections since the 5th century B.C., the 2,000-kilometer-long Grand Canal is a UNESCO World Heritage site. It connects Beijing to South China and has been vital to the nation’s culture and economy for millennia. The Tongzhou District of Beijing has long been an important point of trade along the canal; as goods arrived in Tongzhou from the south, they were sorted and stored in warehouses until needed in Beijing. In a regional reversal, the performing arts complex will now draw Beijing residents and visitors from the city to the canal.

The design team incorporated sustainable features throughout the project that promote human and ecosystem health, earning the project a China Three Star rating for environmental performance. The high-performance building envelope, which is shaded by a perforated aluminum screen, conserves 20% more energy than required by local code. The buildings plug into a district energy system that is primarily

powered by ground-source heat pumps, achieving a 60% renewable energy use rate. The HVAC system’s filtration system combined with carbon dioxide sensors in public areas ensures high indoor air quality. Low-flow fixtures conserve water throughout the buildings. Rainwater gardens and permeable pavements create a porous, sponge-like landscape that absorbs and retains stormwater on-site, reducing the chance of flooding. Landscape irrigation, road and garage cleaning, and toilet flushing all use 100% reclaimed municipal greywater, further reducing the consumption of water resources.

A dedicated metro station below the park, along with ramps and stairs at ground level, facilitates public access. The subterranean level also includes parking, retail, and a food and beverage complex interspersed with sunken gardens. The plinth is always open as part of the park, providing visitors with inspiring views of Tongzhou and the Grand Canal. “It’s gratifying to see the flow of people and the sharing of ideas and experiences in and around the Beijing Performing Arts Centre, all reflected in the historic waterway,” says James Lu, regional director, Perkins&Will. “This project is truly a testament to the city’s vision and commitment to arts and culture.”

[www.perkinswill.com](http://www.perkinswill.com) / [www.shl.dk](http://www.shl.dk)





# ANTICIPATE LONDON

## REPOSITIONING FACILITIES SHOW FOR THE FUTURE

In an ever-changing world, property and people leaders face constant challenges that demand proactive solutions.

From technological innovation to climate change, legislation, and unanticipated threats, today's professionals must minimise risk while embracing new innovations and opportunities.

Anticipate London stands at the forefront of this evolution, offering a platform dedicated to smarter properties, safer occupants, and integrated systems.

Emerging from the legacy of four renowned industry events—IFSEC, FIREX, Safety & Health Expo, and the Facilities Show—Anticipate London is not just a new name. It's a bold, unified event designed to meet the needs of today's leaders while preparing them for tomorrow's challenges.

### Facilities Show Reimagined

For years, each of the four co-located events—Facilities Show, Safety & Health Expo, FIREX, and IFSEC—has been a cornerstone for professionals in their respective fields.

Now, Anticipate London brings these established brands together into one dynamic event, maintaining their core focus while adding value through expanded

content and a more seamlessly integrated experience.

- **Facilities Show:** Still the premier event for FM and property managers, now covering ESG, workplace trends, and PropTech. The UK facility management market is projected to grow to \$71.46 billion by 2026, highlighting the sector's significant growth.

- **Safety & Health Expo:** Continues to address employee wellbeing, inclusive PPE, and workplace safety. With 693,000 non-fatal workplace injuries in 2022, according to the HSE, the demand for health and safety services remains critical.

- **FIREX:** Focusing on the Building Safety Act, the golden thread, and evolving fire safety regulations. Post-Grenfell reforms are expected to drive substantial fire safety investments, keeping FIREX at the forefront of industry change.

- **IFSEC:** Bringing together security professionals to explore cyber security, AI, and new threats. The global security market is forecast to grow from \$119.4 billion in 2022 to \$173.6 billion by 2027, reflecting increased demand for advanced security technologies.

- **Anticipate London:** Brings it all together, but with even more value than before. It attracts even more



*It's a bold, unified event designed to meet the needs of today's leaders while preparing them for tomorrow's challenges.*

forward-thinking leaders are focused on opportunities presented by building technologies and digitalisation, all while addressing the challenges of decarbonisation, global risks, and evolving government regulations.

**What's New at Anticipate London?**

Attendees can expect the most packed agenda of learning, networking, and industry celebration. Highlights include:

- **Five Content Stages:** Featuring 300 expert speakers covering the latest innovations and regulations, keeping attendees ahead of industry shifts.
- **High-Calibre Keynotes:** With speakers from MI6, BT, the Bank of England, the NHS, and more, attendees will gain critical insights from global industry leaders.
- **Exclusive Networking Areas:** VIP lounges, invite-only gatherings, and backstage experiences create a tailored, senior-level experience for strategic decision-makers.
- **Converged Solutions:** In recognition of the growing overlap between traditional property, H&S, fire safety, and security roles, Anticipate London unites these fields to deliver a holistic approach to managing risk.

- **Cutting-Edge Tech:** From energy monitoring to surveillance feeds, the Nerve Centre offers live demonstrations of state-of-the-art technologies.
- **Fringe Events:** The renowned EHS Congress, FM & Property Awards Party, and the Security & Fire Excellence Awards add extra value to attendees.

**The Audience for Tomorrow**

While Anticipate London may be a new name, the expertise behind it is long-established.

Anticipate London is set to take place from December 2-4, 2024, at ExCeL London. We invite you to join us and be part of an event that truly unites industries, addresses challenges, and sets new standards for the future.





# FD30 FIRE RATED DOOR SOLUTIONS

## ROCKET DOOR FRAMES

Rocket Door Frames' space saving pocket door kits have proved very successful in the UK over the last five years. The ease of installation of the 100% steel frame have made them attractive to architects, builders and keen DIYers alike. Rocket's ultra flush door product without the architrave is also popular particularly with interior designers looking to make a visual impact in home and commercial spaces. That's great but is it enough?

Fire safety has never been more important in the minds of customers when making a purchase. The fire resistance of these door systems is a question our team is increasingly asked about and is something we take very seriously. To illustrate this Rocket put its door products through rigorous independent fire safety testing to prove their suitability.

Tested by the UKAS-accredited Warringtonfire laboratory, the Rocket pocket door and ultra flush concealed door systems both obtained a full 30-minute rating, known as FD30. This means the kits can be safely used with any standard doors with the Rocket pocket frame, or doors supplied by Rocket for its concealed door product.

In the assessment, Rocket's pocket door system was fitted with a flaxboard core door, one of the most onerous of all the fire door cores. This was done for the customer's peace of mind; if the most basic door passed the test, they knew they had a product they could trust.

Following the FD30 test, Rocket actually achieved an impressive 48 minutes of protection. That is 60% more than the requirement for full approval.

### The Jamb Lining

A jamb is essentially a timber lining kit fitted after the door is installed to cover the top of the door and running mechanism. This lines the metal entrance verticals to the pocket for a clean and professional look.

Rocket's fire door jamb is made from a high density, slow burning European oak providing a strong and stable finish. Another advantage is that this jamb does not have flat architraves integrated into the system.

The quality of the Rocket jamb system easily passed the fire test without the need for architraves. This means you can specify the same architraves throughout a development and not be constrained by the jamb design.

### Availability and Delivery

When selecting a Rocket FD30 door system a full fire jamb set is included as well as all the intumescent strips you need to complete the job. All the main standard British sizes are stocked items and can be delivered in a matter of days to anywhere in the UK.

Our friendly customer service team are available by phone or email if you require any technical advice or assistance

03309980617 | [info@rocketdoorframes.co.uk](mailto:info@rocketdoorframes.co.uk)  
[www.rocketdoorframes.co.uk](http://www.rocketdoorframes.co.uk)

 **Rocket Door Frames**



## ULTRA FLUSH DOORS

# Make the Most of Your Living Space



Primed flush to wall doors with push or pull, left or right opening

Aluminium frame and choice of solid wood door sizes

Range of hinge and handle finishes plus magnetic lock option

Also Available

## POCKET DOORS

Maintenance free running gear  
Rust-free galvanised steel frame

Quick scan for Rocket website



FD30  
APPROVED



LIFE TIME  
WARRANTY



DIRECT  
SALES



NEXT DAY  
DELIVERY

 Rocket Door Frames

info@rocketdoorframes.co.uk  
www.rocketdoorframes.co.uk  
0330 9980617

# WE DON'T CALCULATE: WE TEST

AT PURE VISTA, WE PRIORITISE MAKING THE BEST AND SAFEST PRODUCT FOR OUR CUSTOMERS, EVEN IF THAT MEANS HIGHER INVESTMENT IN RESEARCH, DEVELOPMENT AND TESTING

Where some competitors in the market use calculations to decide whether the internal components meet fire regulations, we don't. We have tested the whole system.

Our testing had gone above and beyond the necessary requirements to improve safety for homeowners. Before our products undergo official testing, we subject them to rigorous in-house testing to ensure that every element of the system exceeds official testing and strict government regulations.

In response to the tragic Grenfell Tower fire, regulations have changed. Residential buildings now over 11 metres must comply with fire safety regulations. All materials used on the external wall system, including balustrades, must be non-combustible and classified as A1 or, D0 EN13501-01 under the European classification system.

Emphasising the need to prioritise products with the highest fire safety standards is crucial as further reforms are underway for the construction industry.

Partnering with Pyroguard, we tested the channel alongside all the internal components with Pyroguard 23mm glass for a complete system test. POSIglaze and POSIone have successfully passed the fire testing installations on projects over 11 metre high and achieved A2, S1, D0, EN13501-1 status, reaching the line load of 0.74kN.

## About our Fire Rated Systems

### POSIglaze FR

POSIglaze is the first fully adjustable balustrade system to enter the balustrade market. The system benefits from patented screw clamp technology, allowing easy adjustment to the glass. Our most popular and original frameless glass balustrade system is now available as a fully fire-rated system.



*Emphasising the need to prioritise products with the highest fire safety standards is crucial as further reforms are underway for the construction industry.*

### POSIone FR

POSIone is a fully adjustable system with one side fit. The system benefits from patented slider technology. Installed and adjusted on the safe side of the glass, meaning any glass replacements can be easily carried out. Enabling safer installation on projects with glass balustrade, including those over 11 metres high.

### ACCREDITED TO 0.74kN TO BS 6180:2011

Both POSIglaze and POSIone are accredited and approved by multiple organisations to verify that they meet national and international building regulations for use as edge protection, where up to 0.74kN force loading is required.

Our fire-rating test reports and ratings are available on our website.

[www.pure-vista.com](http://www.pure-vista.com)

For fire-rated products, contact our technical and sales team for assistance with design and quotes.



**PURE VISTA**  
Glass Railing Specialists



**FIRE RATED**  
Glass Balcony Systems



## POSglaze

Adjustable & Lightweight  
Tested to 0.74Kn  
Up to 1300mm Glass Height



## POSlone

One-side-fit  
Tested to 0.74Kn  
Up to 1200mm Glass Height



## WE DON'T CALCULATE: WE TEST

- ✔ Fire rated to A2, S1, D0, EN13501-1
- ✔ Accredited 0.74Kn to BS 6180:2011



**Call our sales team for quotes, samples & orders**

[www.pure-vista.com](http://www.pure-vista.com)

Phone: +44 (0)1208 261040, E-mail: [sales@pure-vista.com](mailto:sales@pure-vista.com)

Opening times: 8am-5pm Monday to Friday.

# CLASS 1 MAGPLY BOARDS WITHSTAND REAL LIFE FIRE TEST ON SURREY HOME

## FIRE-RESISTANT QUALITIES OF MAGPLY BOARDS SAVE THE DAY

A potentially catastrophic blaze, which consumed the garage adjoining a £1M house in rural Surrey, was stopped in its tracks thanks to the property's



Structurally Insulated Panel (SIP) construction being sheathed in Class 1 certified Magply boards as the substrate panel for the proprietary render system.

Although the emergency services were quick to attend the fire, which happened in September, it had taken sufficient hold that the timber framed double garage was almost completely destroyed with just some sections of the frame still standing. However, the gable end to the house which features a relatively thin, weatherproof finish of the silica-based K-Rend suffered only surface damage.

Remarkably, although areas of the render had spalled off, the 12mm Magply boards underneath had not even charred while they had fully protected the SIPs structure beneath: a fact borne out by the system supplier, Glosford SIPs, which took core samples to confirm the continued integrity of the insulated sandwich panels which are faced by OSB.

The Contracts Manager for Fullers Plastering, James Corlett, commented: "The fire-resistant qualities of the Magply boards saved the day. We had utilised Magply as a render-backer on a number of projects before being awarded the contract to apply K-Rend to the half dozen homes here, and have always been very pleased with the performance. It is an easy board to cut and fix, while we can now definitely confirm to clients that it fully complies with the fire requirements for domestic and commercial buildings."

The home's owner confirmed: "The Magply boards stood up extremely well: although the K-Rend which took the full brunt of the heat cannot be easily removed. So though the Magply base boards did an absolutely first-class job they are going to be replaced as a precaution before the gable end wall is re-

rendered and we hope the repairs will only take eight weeks to complete - mainly down to the lead time for a couple of replacement windows to be delivered."

Fullers Plastering is based in nearby Brighton and is an approved applicator for a variety of render systems, whose manufacturers correspondingly recognise Magply as being a suitable substrate or carrier. The K-Rend base coat is sprayed at a 4mm thickness and given a notched finish before the reinforcement mesh is set in. Then a second layer is applied and given a sponge finish before being left to cure for 14 days. This is then primed and given a TC 15, 1.5mm grain size K-Rend topcoat.

Despite offering good adhesion for the decorative render system, Magply boards are very moisture resistant thanks to their modified MOS formulation that also represents an environmentally friendly alternative to conventional plywood or OSB sheets. The production process keeps the chlorine content to just 0.01%, enhancing long term durability, while Magply boards carry a variety of internationally recognised accreditations. Accordingly, they are widely specified as part of the build-up for cladding systems on high rise properties, as well as patters boards to carry bathroom or kitchen fittings for the fit-out.

**TEL: 01621 776252**

**EMAIL: [john@magply.co.uk](mailto:john@magply.co.uk)**

**WEB: [www.magply.co.uk](http://www.magply.co.uk)**



MANY – “AS BUILT FIRE TESTS”  
ENABLES COMPLIANCE WITH B.S.A.

# Magply

## A1 NON-COMBUSTIBLE BOARD

TESTED AND CERTIFIED FOR

- ▶ Timber frame construction
- ▶ Spandrel panels
- ▶ Modular build
- ▶ Rainscreen cladding
- ▶ Render carrier board
- ▶ High performance dry lining
- ▶ Tilebacker
- ▶ Fire resistant floors and ceilings
- ▶ Passive fire protection
- ▶ Steel frame construction



magply.co.uk | 01621 776252 | sales@magply.co.uk

# FIRE GLASS UK

## YOUR TRUSTED PARTNER IN FIRE-RATED AND SPECIALIST GLASS SOLUTIONS

In the rapidly evolving world of architecture and construction, having the right partners is crucial to achieving excellence. At Fire Glass UK, we pride ourselves on being the market leader in specialist glass, offering unparalleled customer service and an extensive range of products designed to meet the diverse needs of architects, specifiers, and construction professionals.

### Comprehensive Product Range with Nationwide Reach

Our comprehensive product range is tailored to the unique demands of the construction industry, ensuring you get the glass you need, when you want it. With our nationwide branch network, Fire Glass UK is equipped to supply your project with fire and safety glass solutions, all at competitive prices. Whether you require supply-only services or full installation, our team is ready to deliver.

### Accreditations and Compliance: A Commitment to Safety and Quality

Safety is non-negotiable in construction, and at Fire Glass UK, we understand that there is no second chance to get it right. We hold multiple accreditations, including Certifire, FIRAS, CHAS, ConstructionLine Gold, and ISOs 14001, 9001, along with CPR for EN 1279 and 12150. Our in-house production and manufacture of IGUs are accredited to Attestation Level 1, providing our customers with confidence in our compliance, test evidence, and overall quality.

### Supporting You with Technical Expertise

Understanding the critical role that glass plays in both the performance and aesthetic appeal of a building, we are committed to ensuring that our products not only meet but exceed industry standards. Our dedicated technical support team can assist you with any project-specific queries, ensuring that your specifications are



*Safety is non-negotiable in construction, and at Fire Glass UK, we understand that there is no second chance to get it right.*

detailed, technically accurate, and up-to-date. We work closely with you to find the right product that aligns with your design vision and performance requirements without compromising safety or budget.

### Additional Resources and Support

To further support our customers, Fire Glass UK offers a range of interactive online resources, continuous professional development (CPD) training, and testing facilities. As a member of the Glass and Glazing Federation (GGF), we are committed to staying at the forefront of industry developments, providing you with the most current and innovative solutions.

### Choose Fire Glass UK for Your Next Project

When you choose Fire Glass UK, you're choosing a partner dedicated to excellence in every aspect of fire-rated and specialist glass. From our comprehensive product range and technical support to our extensive accreditations and commitment to safety, we are here to help you achieve your project goals with confidence.

For more information or to discuss your specific requirements, reach out to our dedicated Technical Support team or visit one of our branches. Together, we can create your building fire strategy.

0121 667 9089  
info@fireglassuk.com  
www.fireglassuk.com



TECHNICAL FIRE SAFETY GROUP



## TORMAX AUTOMATIC DOORS COMPLIANT WITH MARTYN'S LAW SECURITY REQUIREMENTS

In response to the forthcoming Martyn's Law (Terrorism Protection of Premises Bill), TORMAX confirms that its automatic entrance systems already meet the new security standards. Introduced after the 2017 Manchester Arena attack, Martyn's Law requires public venues, especially those with capacities over 100 people, to implement enhanced security measures against terrorist threats. The Automatic Door Suppliers Association (ADSA) supports the legislation, stressing the critical role of access control systems in public safety. ADSA highlights that powered pedestrian doors with emergency lockdown functions are essential for responding to potential threats swiftly. Martyn's Law recommends upgrading doors with smart control systems for immediate lockdown and threat detection, improving both security and efficiency.



"TORMAX has always prioritized safety and security in public spaces," says Simon Roberts, Managing Director of TORMAX. "Our systems are equipped with an emergency close function that maintains sensor operation, ensuring safe and secure closure during critical situations." As Martyn's Law moves toward full implementation, TORMAX is committed to helping venues comply, offering innovative solutions that exceed security standards and enhance public safety.

For more information, visit [www.tormax.co.uk](http://www.tormax.co.uk)



**KEEP YOUR PROPERTY SAFE WITH MY FIRE DOOR!**



We specialise in:

- Fire Door Surveys: Ensuring compliance and pinpointing vulnerabilities.
- Fire Door Repairs: Swift, reliable fixes for optimal safety.
- Fire Door Installations: Upgrade to the highest standards.

Protect your property, protect your peace of mind.

**Contact us today!**

01202 124060 | [contact@myfiredoor.co.uk](mailto:contact@myfiredoor.co.uk) | [www.myfiredoor.co.uk](http://www.myfiredoor.co.uk)

**PREMIER  
LOFT LADDERS**



Fire rated steel hatch box offering up to **60-minute protection**

Thermally insulated & airtight hatch to **keep in the warmth**  
(U value from 0.17 W/m<sup>2</sup>K)

Heavy-duty ladder for **strength & durability**  
(load rating of 250 kg/tread)



Explore our range of fire rated loft ladders & hatches...

[www.premierloftladders.co.uk/fire-rated-loft-hatch](http://www.premierloftladders.co.uk/fire-rated-loft-hatch)

0345 9000 195 | [sales@premierloftladders.co.uk](mailto:sales@premierloftladders.co.uk)



# UNIVERSITY OF WARWICK LAUNCHES UNPRECEDENTED £700M CAPITAL INVESTMENT

---

BDP'S PLANS FOR THE UNIVERSITY OF WARWICK'S STEM CONNECT PROGRAMME, PART OF THE £700M CONNECT PROGRAMME HAVE BEEN UNVEILED

Following a competitive design competition, the multidisciplinary consultancy won the project to design a significant investment in the University's teaching, learning and research capabilities for science and engineering subjects.

As the lead consultant and principal designer, BDP worked in partnership with the University to design a vision for sustainable campus facilities to enhance excellence in teaching, collaboration, research, and innovation for the benefit of students, staff and the regional economy.

The STEM Connect Programme will activate more cross disciplinary collaboration and enable industry partners to work more effectively with staff and students. It will help better engage the public and future collaborators across pioneering research, education, and innovation.

The new plans will revitalise the heart of the University campus, enhance connectivity and improve



collaboration between departments. Guided by the University's sustainability aspirations, the STEM Connect Programme will see the creation of new, low carbon campus buildings, including a new university green - a high-quality public amenity space. The new green will create opportunities for community engagement, events and enhance biodiversity.



“

*We will be creating an environment that will combine excellence with an interdisciplinary culture to create partnerships that will help address the world's pressing challenges.*

A newly built energy centre within the development boundary will ensure that all energy is generated on site and high performing façades, green roofs and innovative building services will help the project achieve Passivhaus, BREEAM Excellent and Well Platinum accreditations.

BDP's Architect Principal and Global Education Lead, Sue Emms, explains: "The STEM Connect Programme will transform the heart of The University of Warwick's campus. The design and the choice of materials demonstrates the University's commitment to high quality, longevity, and sustainability in the built environment while delivering world-class STEM facilities that unite researchers, staff, students, local communities, and industries.

"Not only will this project bring solutions that help the University decarbonise its estate, it will also work to

instil a sense of belonging, while providing a great user experience - not just for students but for everyone who comes here."

Professor Mark Williams, Academic Director for the STEM Connect Programme, said: "Through the STEM Connect Programme, we will firmly maintain The University of Warwick's position as a global powerhouse for STEM, that will pave the way for groundbreaking research and education programmes. The programme will also provide access to state-of-the-art facilities that will deliver both innovation and societal impact.

"We will be creating an environment that will combine excellence with an interdisciplinary culture to create partnerships that will help address the world's pressing challenges. This is a hugely ambitious project, and I am looking forward to working with our colleagues, students, business partners and wider community to deliver our vision."

BDP is delivering multiple design disciplines including architecture, civil and structural engineering, lighting, landscape architecture, acoustics, interior design and sustainability consultancy.

[www.bdp.com](http://www.bdp.com)



# IMPERVIA FLOORING

## FUNCTIONALITY, STYLE, AND PROTECTION

Impervia flooring is gaining recognition as one of the safest and most reliable flooring options for residential and commercial spaces. This high-quality flooring offers a blend of functionality, style, and protection, making it an ideal choice for those seeking durability, safety, and minimal maintenance. The key reasons why Impervia stands out as a safe flooring option include its very low slip risk, high durability, waterproof nature, and fire resistance. Let's explore these factors in more detail.

One of the most critical safety features of any flooring material is its slip resistance. Impervia excels in this area, making it a great choice for homes with children, elderly residents, or high-traffic commercial spaces. Its textured surface and innovative design significantly reduce the chances of slipping, even when wet.

Traditional flooring materials like tiles or hardwood can become hazardous when exposed to moisture. Impervia, on the other hand, is engineered to maintain its grip under various conditions. Whether it's in a kitchen, bathroom, or entryway exposed to rain, this flooring offers peace of mind. The low slip risk makes it perfect for places where safety is a priority, including hospitals, schools, and gyms, where spills and wet conditions are common.

Durability is another standout feature of Impervia flooring. It is designed to withstand heavy foot traffic, making it ideal for both residential and commercial settings. Unlike traditional flooring materials that may crack, warp, or show signs of wear over time, Impervia is highly resistant to scratches, dents, and other forms of damage.

This durability is thanks to its multi-layer construction. The top layer is designed to resist scratches and scuffs, while the core provides exceptional strength and stability. It can endure the everyday demands of busy households or commercial spaces without compromising its appearance or functionality. This resilience ensures that the flooring will look new for years, reducing the need for frequent repairs or replacements, which adds to the safety of the environment by preventing trip hazards caused by uneven or damaged floors.

One of the most remarkable attributes of Impervia flooring is that it is 100% waterproof. This feature makes it an excellent choice for areas prone to moisture, such as kitchens, bathrooms, basements, or laundry rooms. Water damage is a common concern for many types of flooring, especially in areas that experience spills or high humidity.



“

***Impervia flooring is an excellent option for anyone prioritising safety, durability, and long-lasting performance.***

In addition to being waterproof, Impervia flooring is also fire resistant, making it an exceptionally safe choice for homeowners and businesses alike. Flooring materials like wood, carpets, or certain types of vinyl can be flammable, posing a risk in the event of a fire. Impervia's fire resistance significantly reduces the spread of flames, giving occupants more time to evacuate and minimising damage.

This fire-resistant property adds an extra layer of safety to any environment, especially in areas where fire hazards may be a concern, such as kitchens or industrial spaces. The knowledge that your flooring is less likely to ignite in case of an accident provides peace of mind and enhances the overall safety of the building.

Impervia flooring is an excellent option for anyone prioritising safety, durability, and long-lasting performance. Its low slip risk ensures it's suitable for all age groups and environments, from homes to high-traffic commercial spaces. The fact that it is 100% waterproof makes it a standout choice for moisture-prone areas, while its fire-resistant nature adds an additional layer of security. With all these features combined, Impervia stands out as one of the safest and most reliable flooring solutions on the market. Its superior durability and low-maintenance design make it an investment that will last for years, ensuring both safety and style in any space.

[www.impervia.co.uk](http://www.impervia.co.uk)



# Transform Your Space with Impervia Flooring Luxury Without Compromise

Looking for flooring that combines elegance, safety, and durability?

Impervia Flooring is your ideal choice for both residential and commercial spaces.

## WHY CHOOSE IMPERVIA?

**100% Waterproof** – Ideal for kitchens, bathrooms, and any space prone to spills.

**Slip-Resistant Surface** – Designed to prevent slips and falls, ensuring a safer environment for your family, pets, and customers.

**Scratch & Stain Resistant** – Built to handle high-traffic areas without compromising on style.

**Fire-Resistant** – Provides an added layer of safety in case of emergencies.

**Non-Toxic & VOC Free** – Made from sustainable, eco-friendly materials free from harmful chemicals, creating a healthier indoor environment.

**Easy Installation** – Save time with our simple click-lock system.

## SAFETY FIRST, ALWAYS!

Impervia flooring meets strict safety standards to give you peace of mind. Ideal for homes with children, elderly family members, or commercial spaces with heavy foot traffic.

With a wide range of styles from natural wood finishes to modern tiles, Impervia has the perfect design for any space. Upgrade your floors with Impervia today and experience the ultimate blend of style, safety, and performance.



Call now at **01666504015** or visit **[www.impervia.co.uk](http://www.impervia.co.uk)** to request a free sample or browse our full collection.



# THE COMPLETE UNDERFLOOR HEATING PACKAGE

## GAIA CELEBRATE 35 YEARS DESIGNING, SUPPLYING AND INSTALLING UNDERFLOOR HEATING

Experts in underfloor heating, Gaia, are celebrating 35 years delivering underfloor heating across the UK and Ireland.

Established in 1989 and having enjoyed significant growth of both staff and premises since then, Gaia have become a recognisable name in the underfloor heating community.

“We’re proud to have become an established and well-recognised provider of underfloor heating. Trusted by architects, contractors, M&E consultants, builders and developers nationwide, clients come to us for our expertise, dependability and friendly approach - attributes which have gained us many valuable relationships over the last 35 years” says Steven Rooney, Director of Gaia.

The business has changed throughout the years, starting out as DEVI in 1989. It was acquired by global leader Danfoss in 2003 and Gaia Climate Solutions Ltd was formed in 2010 as part of a management buy-out.

Since then, the company has experienced consistent growth, expanding its workforce to over 50 employees. It has evolved from specialising solely in electric underfloor heating to offering both electric and wet underfloor heating solutions. Additionally, the company has launched an Operations Team and introduced on-site Contract Managers to oversee project execution.

Today, Gaia offers the complete underfloor heating package, from system design to supply and installation - as well as an exceptional after-sales service to ensure its clients are satisfied from project conception to completion.

“Here at Gaia, we are passionate about offering a personal service, from recommending the right system to answering any queries throughout the project and beyond. Whether it’s a commercial or residential development, a refurbishment or new-build, our capable team are always on hand to find the most suitable solution for the project” adds Steven.

“As we’ve reached this significant milestone, we’re also celebrating our loyal employees - many of whom have been with the business for over 20 years. Our success wouldn’t have been possible without them and I’m



“

*Here at Gaia, we are passionate about offering a personal service, from recommending the right system to answering any queries throughout the project and beyond.*

honoured to be part of the Gaia family. After 35 years, we are still delivering an exceptional service as a team and we’re all excited about the next 35!” adds Chris Alecock, fellow Director of Gaia.

The underfloor heating experts have completed a wide range of commercial projects as well as many large-scale residential developments over the last three and a half decades - from The Shard - One Hyde Park and Center Parcs to Canterbury Cathedral and the biggest electric project in 15 years at Eight Gardens, Watford.

Having worked with leading housing developers such as Taylor Wimpey and Telford Homes, Gaia have become the UK’s underfloor heating partner of choice.

“Whatever the scale of the project - residential or commercial - we have built a trusted reputation for designing, supplying and installing wet and electric underfloor heating. With 35 years’ experience - and demand for energy-efficient heating on the rise - we’re ideally placed to provide the solution architects and developers are looking for” concludes Steven.

**More details of Gaia can be found at [www.gaia.co.uk](http://www.gaia.co.uk)**

We've been the UK's  
**underfloor heating partner**  
of choice since 1989



Hydronic 'wet' systems



Electric 'dry' systems

For 35 years, our expert team have been  
✔ designing    ✔ supplying    ✔ installing



Contact us today to discover more

## Beautiful Designer Ceiling Fans



Powerful - Reliable - Silent



### THE HENLEY FAN COMPANY LTD



01256 636 509  
www.henleyfan.com

## INTRODUCING CONSORT CLAUDGEN'S NEW COMMERCIAL FAN HEATER

Consort Claudgen is proud to announce the launch of the new CFH3 Commercial Fan Heater, designed to deliver efficient and reliable heating for workshops, garages, and other commercial spaces. Rated at 3kW, this heater features three fan speeds and three heat settings, along with a fan-only mode for optimal air circulation. The HRXSL controller ensures precise temperature control, offering up to 6 daily programmes and 7-day scheduling for enhanced energy efficiency. Multiple heaters can be controlled in a single zone configuration, providing scalable solutions for larger spaces. The wall-mounted heater is equipped with multi-directional brackets for flexible installation, offering 180° horizontal and 45° vertical adjustment for targeted warmth.

Finished in sleek matt black, the CFH3 is not only functional but also stylish, making it the perfect addition to any commercial environment.

For more information, contact Sales at 01646 692172 or visit [www.consortepl.com](http://www.consortepl.com).



## CFH3 Commercial Fan Heater Wireless Controlled

Provides comfort heating while working in garages and workshops.

- 3kW rating.
- Supplied with HRXSL controller.
- Single phase only.
- Instant directional warmth.
- 3 fan speeds, 3 heat settings.
- Fan only setting for air circulation.
- One controller can operate multiple heaters in single zone configuration.
- Can be controlled by simpler SL controllers if required. This would, however, reduce the functionality.
- Finished in matt black.



01646 692172 sales@consortep.com

For more info, scan QR code

0114 327 0100  
01738 827 244  
www.imsheatpumps.co.uk



## Air Source & Ground Source Heat Pumps Future proof your home today!



If you're thinking of building a new home, undertaking significant renovations of an older property or looking at upgrading the energy efficiency of your home, it's the perfect time to consider installing a heat pump system.

Installing a ground, air or water source heat pump will not only provide 100% of your heating and hot water needs but will lower your carbon footprint, providing an energy efficient heating system that doesn't rely on fossil fuels.

We have been future proofing homes in Scotland, the North and the Midlands since 1997. We work with you, your architect or main contractor to specify the right heat pump system for your home.

With offices in Sheffield, and Perth there is significant financial support is available for most customers from the Scottish HES Loan & English BUS Scheme. Get in touch to find out how a heat pump could work for you!

Send your plans to [contact@imsheatpumps.co.uk](mailto:contact@imsheatpumps.co.uk)

## Ventilation for the Built Environment



quietly **CONTROL** condensation  
quietly **EXTRACT** pollutants  
quietly **tackle MOULD**  
quietly ensure **FRESH** air

**Houses**  
**Apartments**  
**Hotels**  
**Student Housing**  
**Care Homes**

**Low Energy**  
**Economical**  
**MVHR - MEV - dMEV**  
**Building Regulations**  
**Compliant**  
**New Build and**  
**Refurbishment**  
**SAP PCDB Listed**



*Vectaire Ltd. 01494 522333. sales@vectaire.co.uk. www.vectaire.co.uk*

## EXCITING TIMES AT BREATHING BUILDINGS AS COMPANY STRIDES AHEAD IN INDOOR AIR QUALITY

Breathing Buildings, a leading provider of controlled natural and hybrid ventilation systems, is striding ahead in indoor air quality (IAQ) with three exciting developments.



*Business Development Director, Matthew Cooper*

Firstly, the company is celebrating winning 'Commercial/ Industrial Ventilation Product of the Year' category at the prestigious HVR Awards 2024. The company won the award with its new NVHRe, Natural Ventilation with Heat Recycling and Heat Recovery (NVHRe), which is the latest addition to its award-winning range of Natural Ventilation with Heat Recycling (NVHR®) systems. Secondly, the company has invested in a new Business Development Director, Matthew Cooper to help grow the Breathing Buildings brand. Thirdly, Breathing Buildings is exhibiting for the first time in Ireland at the Education Buildings Ireland Exhibition on 6-7 November 2024, collaborating with Lindab on Stand 519 at RDS Dublin, Hall 2. Here the company is hoping to share the wealth of experience it has on how to improve IAQ in schools.



For further information visit [www.breathingbuildings.com](http://www.breathingbuildings.com) or call 01223 450 060.

Introducing the new

# HRV COOL PLUS™


The **smart choice** for thermal comfort **all year round**

Overheating indoors can present several dangers, such as heat-related stress, dehydration, and heightened health issues. The new Titon HRV Cool Plus™ offers a solution designed to deliver cooling and filtered air for user comfort in warmer weather conditions via a compact efficient MVHR and cooling module.



- Up to 3.3kW total cooling (subject to volume flow and relative humidity)
- Available for wall mounting or floor mounting
- Minimal maintenance of fully sealed refrigerant heat pump with coil & fin heat exchangers
- No need for run around ducting. Keeps complexity low
- CIBSE accredited CPD course available on Part O



 01206 713801 | [marketing@titon.co.uk](mailto:marketing@titon.co.uk) | [titon.com/cooler](http://titon.com/cooler)

 **Titon**  
ventilation systems



# A VIBRANT FUSION OF HERITAGE AND MODERNITY

## CONCRETE AMSTERDAM

Tripolis Park, an office campus in the business district of Amsterdam, The Netherlands, has been revitalized with a dynamic atrium design by Concrete, with architecture designed by MVRDV Architects for Flow Real Estate Development. The campus includes the monumental Tripolis complex - one of the late masterpieces of architect Aldo van Eyck - and a new massive landscaper by MVRDV that spans across the Van Eyck buildings.

Concrete designed the interior of the atrium and the main iconic lift landing, aiming to introduce a human scale to the seven-story-high space while playing with the contrasting symbiosis between the old and new, in which van Eyck's architectural language





“

*Alongside the vibrant terrain and its intimate seating arrangements, Concrete added four large trees on the landscape to further enhance the human scale and break the immense height of the atrium.*

remains preserved. The atrium features expansive glass facades and modular elements, creating an open atmosphere that invites natural light, while offering a functional environment for employees and guests. This design pays homage to the architectural elements of the original Tripolis complex, blending urban and natural aesthetics to create a unique and vibrant atmosphere.

#### **Atrium: the in-between space**

The atrium serves as an ‘in-between space,’ located between the angular, playful architecture of Aldo van Eyck and the seven-story-high glass façade of MVRDV’s newly constructed landscaper, which spans the van Eyck buildings and shields them from the A10 highway.

Concrete’s primary challenge was to reintroduce a human scale to this vast, towering space, which is dominated by the hard materials of the architecture. The program for the atrium is a public lobby space serving the offices located in the landscaper and the van Eyck buildings alike.

Concrete turned this challenge into advantage by designing a wooden landscape for the public lobby. Stretching along the full length of the façade, it



## ARCHITECTURAL FOCUS

offers places to dwell, work, wait, and meet. This large wooden landscape is shaped by its architectural surroundings. On one side, the landscape mirrors the playful geometry of van Eyck's buildings, creating a complementary offset. On the other side, the landscape aligns with the slope of the nearby highway, just outside the glass façade. This results in intriguing height variations within the wooden block, transforming it into a dynamic setting.

Concrete carefully carved a diversity of seating configurations out of the wooden block to serve the various needs of users. These range from more secluded seating in the lower part facing the glass façade, to benches around circular communal tables embedded in the block, and tribune seating on the highest part of the landscape, from which you can see and observe the full atrium.

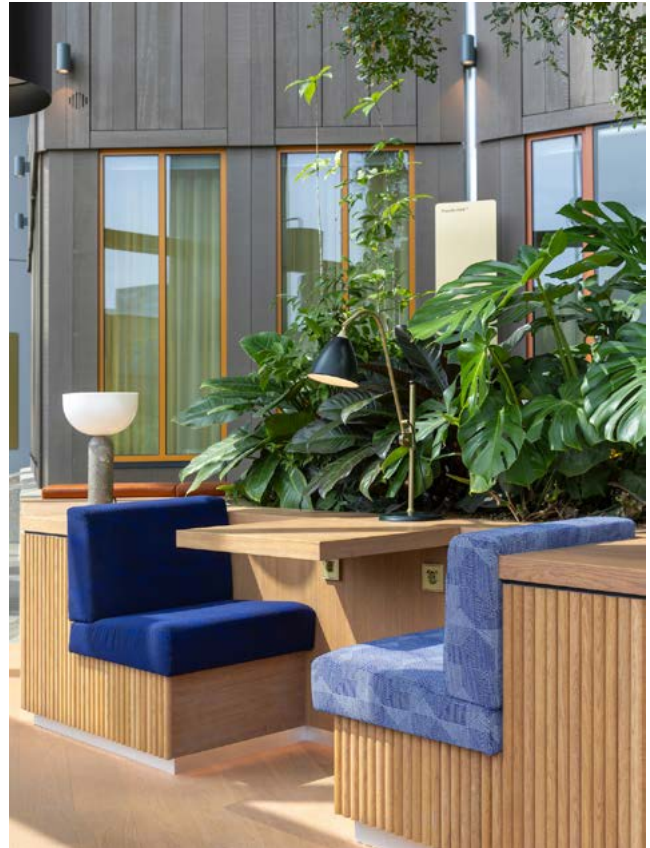
Alongside the vibrant terrain and its intimate seating arrangements, Concrete added four large trees on the landscape to further enhance the human scale and break the immense height of the atrium.

While the grand gesture of the wooden landscape is striking from a distance, the carefully designed details- such as the woodwork, stone inlays, and upholstery- unfold when you get up close to the landscape.

On the far ends of the atrium, Concrete used two hidden niches in the plinth of the landscape to create very secluded workspaces for those seeking privacy.

### **Mirrored elevation: stimulating analogue communication**

The angular shaped central lift lobby, designed by Concrete, is a contrast to the warm wooden landscape



and its organic shapes in the atrium. The lift lobby, though wide, has a relatively low ceiling. To counter this, Concrete lined the walls and ceiling with angled mirrors, creating the illusion of double height through reflected images. The angled mirrors on the walls are strategically placed to ensure that lift users can easily see and engage with one another, stimulating analogue communication.

[www.tripolis-park.com](http://www.tripolis-park.com)





**REHAU**

Designed for **vertical indoor use**, **dp-slim Crystal** is perfect for **splashback** and **wet wall** applications. With its **easy to clean, hygienic surface**, **dp-slim Crystal** is a suitable replacement for traditional bathroom and kitchen wall tiles. **dp-slim Crystal** is the ideal glass, tile or traditional stone and marble substitute for all hospitality and retail environments.

Available to order in quantities from as little as just one laminated acrylic sheet with dimensions: 2800mm x 1300mm x 4mm.

Visit [www.decorativepanels.co.uk](http://www.decorativepanels.co.uk) to explore the full **dp-slim** collection within our **dp-limitless** portfolio.

 **dp-limitless**

# dp-slim crystal

Timeless glass designs with the unrivalled strength of crystal



No commitment to purchasing in bulk



High scratch resistance



50% lighter than real glass



10x less brittle than real glass



Easily processed



4mm acrylic surfaces



# THE PERFORMANCE FLOOR OF CHOICE

## THE IMPORTANCE OF SPECIFYING THE CORRECT FLOOR FOR DANCE AND DANCE EDUCATION

Whether you are specifying a dance floor for the world's leading dance companies or for classes in schools, colleges or universities, the same fundamental criteria apply. Wherever a student chooses to study dance, it is important to make sure that the learning environment is equipped to professional standards with sprung floors, mirrors, and barres.

Choosing the correct dance floor is vital for dancers' health, safety, and artistic performance. Sprung floors, often referred to as floating floors are not all the same and understanding the differences between the various types of floors available is important.

Experts in biomechanics have established a clear link between the quality of a dance floor and the likelihood of injury, demonstrating that a floor with a consistent response and the correct degree of 'traction' is vital.

Dance creates impact energy. If the energy generated is returned to the body it can result in an array of joint problems, sprains, fractures and knee problems. Lower limb problems such as tendinitis, 'shin splints,' and ankle strain can all be attributed to incorrectly specified sprung floors and can take several weeks of physical therapy and recovery time to correct. A dance floor that is impact absorbent and provides lateral foot support is essential.

### **Ensure correct specification.**

Harlequin has led the way in developing and evolving the modern dance floor and has been involved with extensive research into reducing dancer injury.



“

*Harlequin has led the way in developing and evolving the modern dance floor and has been involved with extensive research into reducing dancer injury.*

Innovation is at the heart of all product development which is why Harlequin has become the brand that dancers and performers depend on.

Harlequin offers a turnkey solution for all performance spaces, from initial design and build through to installation, offering advice and guidance every step of the way. All enquiries are handled on a one-to-one basis by our expert technical teams. With over four decades of experience working across a wide range of projects and venues across the world, the Harlequin in-house project management and installation teams can be relied upon to deliver on time and on budget.

All Harlequin sprung and vinyl floor products and ballet barres are easily found and specified through RIBA and NBS.

**For further information about specifying the correct floor for dance and the performing arts, visit our website: [www.harlequinfloors.com](http://www.harlequinfloors.com) or talk to our team on 01892 514 888 or email: [enquiries@harlequinfloors.com](mailto:enquiries@harlequinfloors.com)**

## SAFEGUARD YOUR INTERIORS

Safeguard your interiors with Yeoman Shield's extensive range of wall and door protection solutions, expertly designed for both functionality and aesthetic appeal. Our product lineup includes robust wall protection systems, durable door protection, corner guards, and handrails, all tailored to shield your surfaces from the wear and tear of high-traffic environments. By preventing damage, our solutions help minimise maintenance costs and significantly extend the life of your building's interiors.



In addition to our core offerings, Yeoman Shield specialises in fire door services that ensure your premises meet essential safety standards. Our fire door protection solutions are engineered to maintain structural integrity while providing the durability needed for compliance with industry regulations. These products not only enhance safety but also add value to your property by ensuring it meets the highest safety benchmarks.

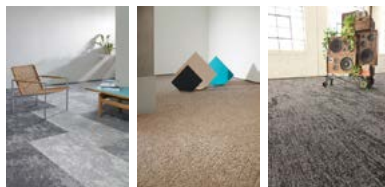
Our commitment to quality and innovation sets us apart in the industry, providing you with peace of mind that your spaces are well-protected. With a focus on user-friendly designs, our products seamlessly blend with any interior décor, enhancing both function and style.

Don't compromise on safety or aesthetics—choose Yeoman Shield for superior protection solutions. Visit our website today to explore our full range of products and services or request a free consultation to discuss your specific needs at [www.yeomanshield.com](http://www.yeomanshield.com). Protect your investment and create a safer environment with Yeoman Shield.



## MILLIKEN ANNOUNCES THREE POPULAR COLLECTIONS CONVERTING TO LOWEST CARBON FOOTPRINT YARN

Milliken Floors has announced the adoption of Universal Fiber's sustainable Thrive® matter yarn in three of its popular carpet tile collections starting July 2024. Thrive® matter is recognized as the lowest carbon footprint nylon yarn in the industry, offering a carbon reduction of 89% compared to some virgin nylon yarns. This eco-friendly yarn is made from 100% post-industrial recycled resin, resulting in 90% recycled content and is GreenCircle® Certified.



*Northward Bound*   *Sculptured Forms*   *Major Frequency*

The collections incorporating this yarn are Major Frequency, Northward Bound, and Sculptured Forms, all known for their high performance and design excellence. Milliken's Director of Marketing and Design, Alison Kitchingman, highlighted the company's commitment to reducing the carbon footprint of its products without compromising quality. Universal Fibers' VP of Sales and Marketing, Anna Plumb, expressed enthusiasm for the partnership and its shared environmental goals. Thrive® matter yarn, with a carbon footprint of just 1.2kg CO2e per kilogram, is verified by an ISO-compliant Life Cycle Assessment and is among the most sustainable options in the industry..

[www.milliken.com/en-gb/businesses/floor-covering](http://www.milliken.com/en-gb/businesses/floor-covering)

## SHELLSHOCK DESIGNS LTD

Shellshock Designs Ltd is a leading innovator in the luxury interiors market, specializing in high-end decorative surfaces and bespoke wall panelling crafted from mother of pearl, Capiz shells, and other exquisite natural materials.



*Self adhesive flexible mother of pearl laminates as cladding.*

Established in the UK, the company combines traditional craftsmanship with modern design principles to create stunning surfaces that elevate residential, commercial, and hospitality spaces worldwide. Shellshock Designs' commitment to quality and sustainability is evident in its sourcing of eco-friendly materials, which are ethically harvested to ensure minimal environmental impact. With a team of skilled artisans, Shellshock Designs offers both ready-to-install panels and fully customized solutions, allowing clients to transform their spaces with unparalleled elegance and sophistication. The company's projects have adorned hotels, luxury homes, retail spaces, and yachts, establishing Shellshock Designs as a trusted partner for architects, designers, and discerning clients seeking unique, high-quality interior solutions. .

[www.shellshockdesigns.com](http://www.shellshockdesigns.com)





# BATTERSEA ROOF GARDENS AND 50 ELECTRIC BOULEVARD

FOSTER & PARTNERS

Battersea Roof Gardens, a mixed-use building, and 50 Electric Boulevard, an adjacent office building with 200,000 square feet of new workspace, have both been completed. Part of the third phase of the Battersea Power Station masterplan, the two buildings sit on the western side of Electric Boulevard, a split-level high street that runs from the Zone 1 Battersea Power Station Underground station to the Grade II\* listed landmark. The new buildings and high street share a gently undulating form, which has been designed to maximize views of the power station. The meandering street offers a wide range of restaurants and shops, receding and expanding at the upper level to create unique vantage points and moments of pause for people as they walk along.



“

*Floor-to-ceiling windows and cantilevered balconies create a permeable and healthy working environment, while the use of greenery and natural materials throughout the space enhances well-being.*

Battersea Roof Gardens - Battersea Roof Gardens features 436 stylish apartments, the 164-room art'otel London Battersea Power Station, and is topped by one of the city's largest rooftop gardens. The rooftop garden is home to 23,000 plants and 55 trees, with grassy areas for social events - and soft ambient lighting that extends use into the evening hours. Curved wooden seating areas echo the form of the building and provide residents with a place to relax in nature and take in the panoramic views. Guests staying at the hotel have access to their own rooftop garden with a lounge bar and infinity pool that overlooks the power station's iconic chimneys. Residents also benefit from a unique Sky Lounge on the fourteenth and fifteenth floors, which features a sunset bar, workspaces, a cinema room, and areas for relaxation. Penthouse apartments have their own private terraces, with spectacular views of the wider development.

50 Electric Boulevard - Located on the south side of the neighbourhood, 50 Electric Boulevard forms

an integral part of the new high street. The building is a stone's throw from the power station, which is home to over 100 shops, bars, restaurants, and leisure venues, Battersea Park, and the River Thames. It is a vibrant and uplifting place to work, which prioritises sustainability through its design. The building's undulating form generates a varying floorplate, which provides maximum flexibility and will accommodate future tenant requirements. 50 Electric Boulevard's entrance lobby is situated on the ground floor and is marked by a prominent entranceway on the high street. The lobby connects with the upper ground floor and a double-height pavilion, known as the Light Box, via a striking spiral staircase. Positioned in the space between 50 Electric Boulevard and Battersea Roof Gardens, the pavilion is illuminated by a series of generous roof lights and full of lush greenery. It also features a coffee bar and bleacher seating for large-scale events.

Floor-to-ceiling windows and cantilevered balconies create a permeable and healthy working environment, while the use of greenery and natural materials throughout the space enhances well-being. The building is naturally ventilated and has its own roof terrace, for exercise classes and office events. A new entrance to the Battersea Power Station underground station, directly underneath the building, will open in spring 2025, allowing for faster travel to and from the office. 50 Electric Boulevard achieves BREEAM Outstanding and WELL Platinum ratings.

[www.fosterandpartners.com](http://www.fosterandpartners.com)





# PIAZZA MATTEOTTI PUBLIC GARDENS

---

## A WELCOMING AND VITAL SPACE

The proposal for the requalification of Piazza Matteotti's public gardens offered an opportunity to re-design a historic place from the early 1900s, which had been distorted by stratification of subsequent interventions, and to restore a new identity to the gateway to Castiglion Fiorentino's historic center (Arezzo -Tuscany), providing citizens with a welcoming and vital space in one of the most beautiful terraces on the Val di Chiana.

The design aims to simplify and hierarchize the elements that compose the space, emphasizing once again the vegetation that, with the new planimetric design, is back to being the protagonist.





“

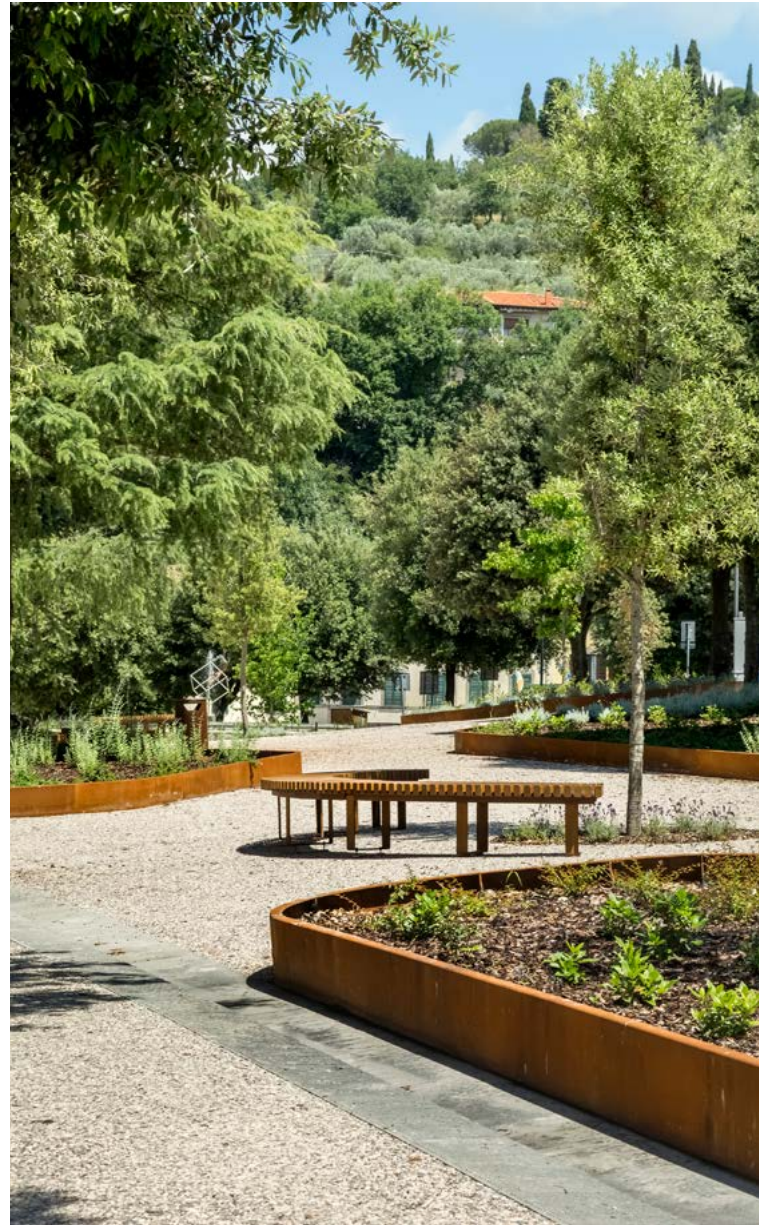
*The design scheme provides a contemporary reinterpretation of the garden design dating back to the 1930s.*



The perimeter “solids” represented by the shrubby flowerbeds are contrasted by the “voids” of the central squares in which to rest in the shade of the trees.

The new draining pavement allows for a more inclusive use while the architectural elements, thanks to the unified and careful selection of materials, are balanced between functionality and aesthetics.

The design scheme provides a contemporary reinterpretation of the garden design dating back to the 1930s, restoring clear hierarchies between paths, “little squares,” and resting spaces, and adapting these elements to contemporary usage needs.



Photographs: Alessandra Bello, Marco Frappi

Bring the indoors, outdoors  
**CROCODILE STYLE**

 Request a  
FREE Survey



 **Call**  
08000 11 22 34  
Free Fitting\* [crocodile.co.uk](http://crocodile.co.uk)

A Glass Veranda along with our fully enclosed Wintergardens, offer a unique extension to your living space, every season of the year. All are constructed using powder coated aluminium and are maintenance free. Find out how these bespoke, easy to install structures will add style and elegance to your home.

\*Subject to terms and conditions.

 4.9 Trustscore  Made in the UK

 **Crocodile**  
PRODUCTS

## SUPER FAST DELIVERY OF FEEDER PILLARS AND BELISHA BEACONS!



We keep stock of both our mini pillar ranges SDMP and BD in a wide range of sizes to suit most applications. We also keep some larger Pillars from our FFP range meaning you can have your pillar within 24-48 hours of order and not have to wait for weeks. In addition, our bespoke and made to order sizes are available from just 2 weeks!

We also keep stocks of our standard AmberGLO8 and OlympiadIPB illuminated column pedestrian Beacon. We also have spares and extras like LED Crossing Spotlights and Courtesy Shields and also the LED beacons for retro fitting for both Belisha and Refuge Beacons

We have been manufacturing since 1982 and are ISO 9001:2015 Quality assurance certified. We supply high quality products for a wide variety of purposes from Highways & Streetlighting, EV Charging and Outdoor Power & Leisure to Sports Facilities, Car Parks, Markets and many other purposes. So you can be confident that the service and products you receive from us is top notch and that we work to a consistent high quality.

See [www.fisherandcompany.co.uk](http://www.fisherandcompany.co.uk) to view our great range of galvanised, stainless and powder coat finish Feeder Pillars, GRP Enclosures, Belisha Beacons, Lighting & Sign Brackets and Digging Tools. To get a quote for your latest project please contact the Sales Team on 0333 666 2122 or email [info@fisherandcompany.co.uk](mailto:info@fisherandcompany.co.uk).

## TOP TURF EVERY TIME

Inturf have 40 years' experience and supply premium turf to customers nationwide for homeowners, landscapers, sports grounds, house builders and local authorities. With sites in York and Grantham, we prioritise quality and environmental responsibility offering 100% natural and plastic netting-free turf and becoming a SafeSupplier to show the quality in our service.



We have always prided ourselves in our Classic and Masters turf and now in 2024 we are adding RTF turf to the list. RTF offers unique advantages that result in a healthier, more vibrant turf. With its ability to quickly repair damaged areas and resist common issues like weed growth, RTF Turf stands out as a practical and effective solution for those seeking low-maintenance, high-quality grass.

As well as supplying turf we are an authorised TerraCottem distributor, a leading soil conditioner for turf, plants and shrubs and can supply Melcourt Premium Topsoil, fully compliant with British Standard and nutrient rich.

Visit our website for more information - <https://inturf.com/>



## FEEDER PILLARS

Power Distribution  
Market stalls & events  
Sports & Leisure

EV charging  
Hospital MRI  
Caravan parks



Galvanised, Stainless Steel & GRP  
Modern & Traditional design • Shell only or Pre-Wired



CALL OUR FRIENDLY SALES  
TEAM NOW FOR A QUOTE:  
0333 666 2122



Or email: [info@fisherandcompany.co.uk](mailto:info@fisherandcompany.co.uk)  
[www.fisherandcompany.co.uk](http://www.fisherandcompany.co.uk)



QUALITY THAT IS GUARANTEED

# BOLLARD LIGHTING 240V & SOLAR



**BOLEDA**  
LED BOLLARDS  
VENTUS

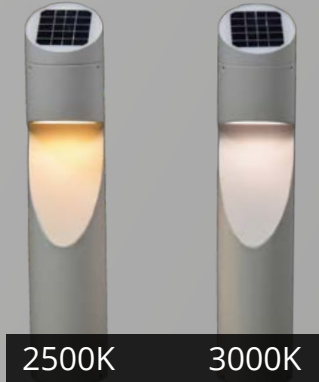


**5**  
YEAR  
WARRANTY

**NEW**

Available as  
**2500K** Ultra Warm White

A warmer toned **Eccentrica** is arriving this summer. The Pro Solar Bollard is becoming even more eco friendly, with an LED panel less disruptive to nocturnal wildlife. At 0.8m tall, all light is emitted down, without glare, making it suitable for dark sky areas.



Showroom Open Mon-Fri 9am - 5pm

Centre 33, Long March, Daventry, Northamptonshire, NN11 4NR

[sales@lumenalights.com](mailto:sales@lumenalights.com)

[lumenalights.com](http://lumenalights.com)



01327 871161



# THE MANIPAL ACADEMY OF HIGHER EDUCATION

## THE PURPLE INK STUDIO

Bangalore in Southern India is thriving with micro campuses from several universities. Among them is the Manipal Academy of Higher Education (MAHE), an 80-acre campus on the city's outskirts. The campus is planned for over 12000 students from varied technology, art & sciences fields. A legacy of more than 60 years, MAHE is synonymous with excellence in education. Nestled in the core of this campus, MARC (Auditorium & Food Court) emanates from its role as the central focal point of the bustling academic hub. The building caters to the diverse and growing campus needs and is designed to support multiple activities and thrive in its setting.

**The Design Framework**—The design program included two distinct facilities: a food court spanning two (lower) levels and a 1,200-seater Auditorium positioned above. A rectangular soft enclosure of a plaza was planned around the building, increasing the visual footprint. The outdoor plaza, with its optical conundrum, extended the interiors seamlessly. These plazas, featuring multiple use points, are planned as outdoor food courts and open congregation spaces for various casual and organized campus activities.

**People, Movement & Transitional Spaces** - The core philosophy of the structure was to create a dynamic

“

*The transitional spaces at the auditorium level with open lobbies and decks face the plaza and create an element of relief.*

and engaging experience, enhancing the sense of place and fostering social interaction. Integrating outdoor and indoor spaces ensured a cohesive connection between the primary activities. As one crosses through the plaza, the spatial threshold disappears. The floor levels are planned to ensure ease of movement. The food court levels are half-sunken to establish a direct connection with the outdoor food court. A diverging set of ramps, exposed on the outer edge, provides direct access to the user at the auditorium level, ensuring seamless accessibility and flow. The movement of the users is carefully choreographed, taking into consideration the specific needs of both the service-intensive and high-traffic area areas. The transitional spaces at the auditorium level with open lobbies and decks face the plaza and create an element of relief.

**Layers & Patterns** - Spatial interchange is explored through multiple layers converging around the central circular form of the Auditorium. The central core functions like a magnet, with open plazas around expanding its field. The Auditorium, with its impressive diameter of 52 meters, stands as a symbol of prominence within the design, anchoring the entire complex's spatial dynamics. Rendered in steel, the metal framework is anchored to the roof trusses that support the composite roof, ensuring structural integrity and stability.

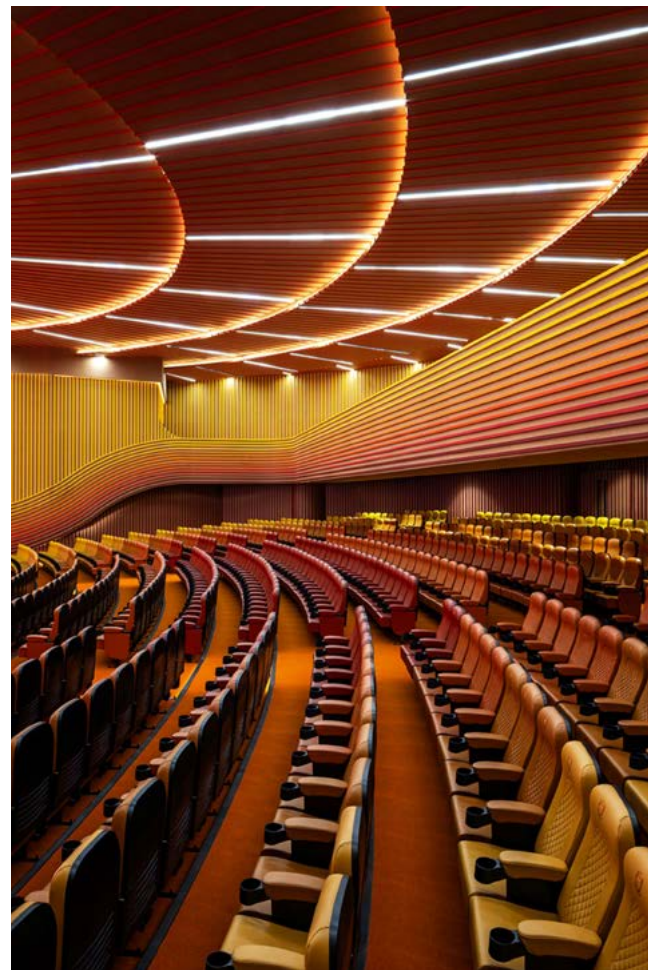




The contrast between the robust framework and enclosing form is accentuated by the concentric rings of hues of orange. This visual juxtaposition highlights the structure’s architectural prominence and reinforces its identity as a vibrant hub within the campus environment.

**Spatial Interiors** - Rather than reinforcing boundaries in architecture and Interiors, the design focuses on removing more than it adds. The Auditorium is planned to have outdoor spaces for the lobbies and decks, as well as a VIP Gallery for the events. The design language continues in the interiors with a strategic mix of materials. A sense of continuity is observed from the outside in. To heighten the sense of drama, a single shape is manipulated by creating different patterns in the interiors. The hues of the orange are organized as patterns in rafters, and the gradients of the chair vanish from the corners and make the form respond to its exteriors. Acoustical panels form the backdrop for the rafters, which cater to the sound insulation. The ceiling, with its concentric light detail, contributes to the overall character of the space. The design of the MARC exemplifies new-age thinking, enriching the user experience and creating a dynamic and inspiring environment that reflects the aspirations of a growing institute.

[www.thepurpleinkstudio.com](http://www.thepurpleinkstudio.com)



Photographs:Suryan//Dang



# Access all areas, with a Stiltz

A perfect time to create the 'now home' while planning for the 'forever home', is when building from the ground up or significantly remodelling an existing property.

A homelift from Stiltz provides the ideal future-proofing solution. Clients embarking on self-build projects or major renovations often request non-intrusive accessibility features. Older clients are keen to make sure their home is suitable for the coming years, and level entry plus an easy access to upstairs are top of the list of must-haves.

Stiltz Homelifts have a division dedicated to supporting professionals involved in newbuilds, renovations and extensions.

Speak to our specialist Sam Townend today on 0808 189 0815.

- Contemporary, elegant styling
- Freestanding for flexible positioning
- Plugs into a standard domestic socket
- Deal directly with the manufacturer
- Full consultation & installation service

*"The Stiltz Homelifts building and renovation division worked together with our architects to deliver the lift installation exactly to our specification. Impressive work".*

Mrs W. - Oxfordshire

Call today to discuss your project or request your free information pack on  
**0808 189 0815** or visit **www.stiltz.co.uk**

**Stiltz**  
Homelifts

## THE NUMBER ONE CHOICE WHEN IT COMES TO LIFT SOLUTIONS

KEP Lifts offer expertise in creating residential, commercial and event solutions for all budgets with experience spanning over 30 years within the Lift Industry. As well as supply and installing a vast range of lifts and platforms we also explore economical and effective refurbishment solutions. We are proud to have worked in famous iconic landmarks and buildings across the country as well as many private residences and at some of the biggest sporting events.

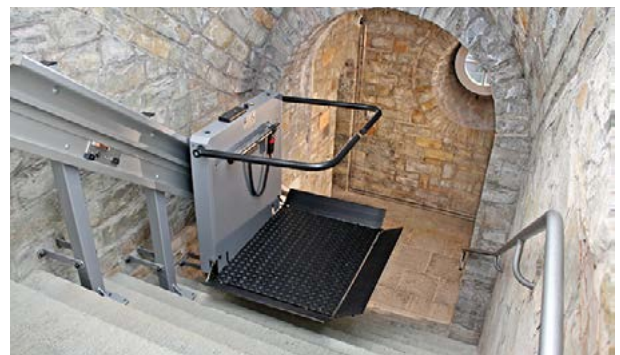


that the end result meets all requirements and exceeds expectations for any budget.

Like most Industries there are constantly new styles evolving. We keep ourselves abreast of all the latest advances so that we can knowledgeably guide you on any new features that a lift solution could benefit from.

If you are already a lift owner we offer excellent service, maintenance and breakdown care to keep your lift travelling smoothly.

**Contact us today for a consultation and no obligation quote; either email: [info@keplifts.co.uk](mailto:info@keplifts.co.uk); or telephone 01843 610060.**



Our team work with designers, architects, builders, event companies and home owners building an impressive portfolio of solutions. Through our wide-ranging and varied projects we have built a reputation to bring our ever-increasing product knowledge along with our creativity to every project. Working with the most renowned names in the Industry our team of experts will guide you through the whole of your project from concept and design, through installation to a continuing relationship providing aftercare. Our team will ensure

# LITE ADDS LIGEO™ TO BOLSTER LED LIGHTING SOLUTIONS PORTFOLIO

LEADING LED LIGHTING SOLUTIONS PROVIDER LITE HAS ADDED TO ITS EXPERT PORTFOLIO OF MARKET-LEADING TECHNOLOGIES WITH THE ADDITION OF LIGEO™.

This latest collaboration for LITE will allow their clients to specify the LIGEO™ LED Lighting System. This simple, patented plug-and-play system is a totally revolutionary approach, acting as a bridge between the built environment and light. The system is easy to install in a wide variety of internal applications from hospitality to retail, education, healthcare and entertainment venues.

When choosing LIGEO™, designers can access a system that goes beyond the standard 2-dimensional constraints of surface or suspended mounting lighting. LIGEO™ makes lighting possible in 3D, delivering exceptional results while being quick and easy to connect safely.

The LIGEO™ system is infinitely reconfigurable, making it adaptable, flexible and re-usable. When it comes to aesthetics, a variety of finishes allow it to suit any colour pallet and décor. The products offer a full range of White light and RGBW options. Sustainability is also embedded in the LIGEO™ manufacturing processes. Made from durable yet lightweight materials, the system components are recyclable for minimal environmental impact.

LITE's UK Specification Manager Lawrence Hayes said: "LIGEO™ is a very unique offering and we are delighted to have this innovative solution as part of our portfolio for our clients. The LIGEO™ system opens up a wealth of opportunities for bridging between lighting and the built environment, its engaging and "Buildable" capabilities mean it is suitable for a plethora of applications and only limited by your imagination".

Samuel Bedoian of LIGEO™ added: "Our plug-and-play system transforms how light interacts with spaces, giving designers the freedom to create innovative 3D configurations that are both visually captivating and sustainable. This collaboration with LITE enables us to reach a broader audience with our reconfigurable, easy-to-install solution, bringing the future of lighting design to life across diverse sectors." [www.ligeo.de](http://www.ligeo.de)

“

*The LIGEO™ system is infinitely reconfigurable, making it adaptable, flexible and re-usable. When it comes to aesthetics, a variety of finishes allow it to suit any colour pallet and décor.*



Lighting and Illumination Technology Experience Limited

For more information on LITE Ltd, visit [www.lite-ltd.co.uk](http://www.lite-ltd.co.uk).



David  
Village  
Lighting

# David Village Lighting

designer lighting. expert advice. lighting design

Contact our  
trade team:

trade@davidvillage  
lighting.co.uk  
0114 263 4266

Flos String Pendants, Vibia Set Wall Lights & Artemide A.24 Track

Image: Lighting Design by David Village

## Designer Lighting

Authorised partner of 100+ designer brands.

- Architectural lighting
- Decorative lighting
- Exterior lighting
- Trade accounts
- Lighting Design service
- Showroom
- Specification Support service

We have over 40 years experience working with architects and industry professionals on a wide range of residential and commercial lighting projects.



@davidvillagelighting

www.davidvillagelighting.co.uk

# ACHIEVE SUSTAINABLE DESIGN GOALS WITH THEBEN

Theben Automation, a leader in intelligent building solutions, provides a comprehensive range of advanced lighting control and automation products that help architects design sustainable, energy-efficient buildings with confidence. From DALI-2 lighting control solutions to dynamic shading controls, Theben's solutions are designed to integrate seamlessly into both new builds and refurbishments, supporting energy-efficient design without compromising on aesthetics.

## Advanced Sensors for Intelligent Spaces

At the heart of Theben's product range are their advanced presence sensors and motion detectors, which play a crucial role in reducing energy consumption. These sensors automatically adjust lighting based on movement and ambient light levels, ensuring that lights are only on when needed. Theben's presence detectors, such as the theRonda and LUXA series, are designed to blend seamlessly into modern interiors, offering reliable performance without disrupting the design aesthetic.

## Dynamic Shading Solutions

Beyond lighting, Theben's solutions extend to dynamic shading control, offering architects the tools needed to optimise natural light and reduce solar gain. The result is a reduction in HVAC loads and a more comfortable indoor environment, crucial for achieving BREEAM certification and other sustainability targets.

## Empowering Architects with Free CPD Sessions

Theben is committed to supporting architects with the expertise and solutions needed to meet today's design challenges. Their free CPD sessions not only provide valuable insights but also position architects as trusted advisors to their clients, helping them to meet the latest regulatory standards while creating innovative, energy-efficient spaces.



“

*Beyond lighting, Theben's solutions extend to dynamic shading control, offering architects the tools needed to optimise natural light and reduce solar gain.*

In addition to CPD training, Theben also offers a complimentary lighting control design and building automation consultation, providing architects with tailored solutions that align with their project goals. This hands-on support ensures that each design maximises the potential of smart controls, seamlessly blending energy efficiency with the desired aesthetic and functionality.

To explore how Theben's innovative solutions can elevate your next project, or to book a free CPD session or consultation, contact the UK team at [info@theben.co.uk](mailto:info@theben.co.uk).

[www.theben.co.uk](http://www.theben.co.uk)

## Intelligent Lighting Control since 1921

For over 100 years, Theben has been synonymous with innovation and quality in building automation and lighting control technology. We have consistently led with groundbreaking products - from the pioneering staircase time switch ELPA to the invention of the Presence Detector in 1992.

Today, as Theben strengthens its presence in the UK, we bring a rich legacy paired with an unwavering commitment to energy efficiency. Our DALI-2 solutions are celebrated for their superior detection capabilities, advanced functionality, and effortless setup and programming. These systems not only meet the current demands of modern lighting but also ensure that your projects are future-proof and adaptable to evolving technologies.

At Theben, we understand the critical role lighting plays in the overall building environment. That is why our solutions are designed to integrate seamlessly into broader building automation systems, providing a cohesive and flexible approach to lighting management that empowers both the aesthetic and functional requirements of any space.



# LONDON BUILD EXPO 2024

## A WIDE ARRAY OF FEATURES AND OPPORTUNITIES FOR PROFESSIONALS FROM ACROSS THE BUILT ENVIRONMENT

As London Build Expo 2024 approaches, the buzz around one of the UK's most anticipated construction events continues to grow. Taking place on November 20th and 21st at the Olympia London, this year's event promises to be bigger and better, with a wide array of features and opportunities for professionals from across the built environment. Whether you're a contractor, architect, engineer, builder, or developer, this is your chance to stay ahead of the curve and connect with industry leaders.

### Co-located with the Fire & Security Expo

London Build Expo is co-located with the London Build Fire & Security Expo, a significant highlight that ensures the event covers the full spectrum of the construction sector. Taking over both the Grand and National Halls of Olympia London, this year's expo will feature everything from networking opportunities to educational sessions, all while showcasing the latest innovations in construction, fire safety, and security.

### What to Expect

There's plenty to look forward to at London Build Expo 2024. Here's a glimpse of what attendees can expect:

#### A Stellar Line-up of 700+ Speakers

With over 700 speakers confirmed, London Build will host a comprehensive CPD-certified conference agenda, covering a wide range of topics relevant to today's construction professionals.

Across 12 conference stages, including the Sustainability, AI & Digital Construction, Skyscrapers & Tall Buildings, Fire Safety, and Diversity & Inclusion Stages, attendees will hear from key thought leaders driving innovation in the industry.

#### Festival of Construction

The event isn't just about learning; it's also a celebration of the construction industry. The Festival of Construction will feature celebrity guests, live music, entertainment, DJs, and the popular London Taste Trail, offering a chance to relax and network in a lively atmosphere.

#### Exclusive Networking Events

London Build is famous for its free-to-attend networking opportunities. This year, networking parties will be hosted by organisations like the CIOB, UKGBC, FIA, nima, CITB, Offsite Alliance, NAWIC, and



the Security Institute, among many others. These events are perfect for making valuable connections with peers and key decision-makers in the industry.

#### Meet the Buyers

One of the key features this year is "Meet the Buyers", which provides a platform for attendees to explore tender opportunities with leading companies such as Costain, BAM UK, Quinn London, John Sisk & Son, Laing O'Rourke, and Skanska. This is an excellent chance for suppliers and contractors to network directly with top-tier construction firms.

#### Architect's Hub

For those in architecture, the Architect's Hub will be a must-visit. Leading firms like Gensler, PLP Architecture, HOK, Hawkins\Brown, and Woods Bagot will be showcasing their latest architectural projects, providing inspiration and insights into the future of design and construction.

#### Limited Free Tickets Available

With limited no-cost tickets available, now is the time to register and secure your spot at London Build Expo 2024. Don't miss out on this unparalleled opportunity to engage with the construction industry's best, discover new trends, and be a part of shaping the future of the UK's built environment.

Get ready to explore a packed show floor, meet influential industry figures, and immerse yourself in the leading construction event of the year.

<https://www.londonbuildexpo.com/>

**OLYMPIA  
LONDON**  
NOV 20-21

**REGISTER**



**FREE TICKETS**



**AN UNMISSABLE 2 DAYS**

35,000+  
ATTENDEES

700+ TOP-LEVEL  
SPEAKERS

MEET THE  
BUYERS

200+  
CPD SESSIONS

450  
EXHIBITORS

WOMEN IN  
CONSTRUCTION  
NETWORKING

NETWORKING  
PARTIES

LIVE MUSIC &  
ENTERTAINMENT

**12 CPD**

**CONFERENCE  
STAGES**

**SKYSCRAPER &  
TALL BUILDINGS**  
STAGE

**AI & DIGITAL  
CONSTRUCTION**  
STAGE

**SUSTAINABILITY**  
STAGE

**DIVERSITY IN  
CONSTRUCTION**  
STAGE

**ARCHITECTURE**  
STAGE

**FIRE SAFETY**  
STAGE

**BUILDING  
SECURITY**  
STAGE

**HEAT, ENERGY  
AIR & WATER**  
STAGE

**DIGITAL  
CONSTRUCTION  
WORKSHOPS**

**MODERN METHODS  
OF CONSTRUCTION**  
STAGE

**FIRE SAFETY**  
WORKSHOPS

**SKILLS &  
MARKETING**  
HUB

**700+**

**STAR-STUDED  
SPEAKERS**

**SENIOR REPRESENTATIVES FROM** AECOM | ARUP | ARCADIS | GLA | BALFOUR BEATTY | KNIGHT FRANK | MORGAN SINDALL | LAING O'ROURKE | BDP | BAM | BRYDEN WOOD | PEABODY | HOK | TRANSPORT FOR LONDON | WATES | BOUYGUES | CUSHMAN & WAKEFIELD | FOSTER + PARTNERS | JACOBS | GENSLER | KIER | HOMES ENGLAND | LENDLEASE | JOHN SISK | MACE | MULTIPLEX | SCOTT BROWNRIGG | SIR ROBERT MCALPINE | SOM | WILLMOTT DIXON | WSP | TRANSPORT FOR LONDON | SKANSKA | MOTT MACDONALD | ZAHA HADID ARCHITECTS

**CO-LOCATED**



**LONDON BUILD  
FIRE & SECURITY**  
EXPO

20 - 21 NOVEMBER OLYMPIA LONDON

## OVER 20 YEARS OF STONE INNOVATION

At Stoneworld we are experts in creating bespoke stone staircases in any space, from hotels and historic buildings to private homes. Utilizing state-of-the-art stone masonry technology and precision equipment, we can craft staircases to meet any project specification.



Whether it's a subtle curve or a lavish grand staircase, our tailor-made stone staircases are fabricated to your exact specification using 3D templating and design technology.



Stoneworld's expertise ensures that each staircase not only enhances the aesthetic appeal of a space but also matches the specific design requirements of the project. With over two decades of experience in natural stone, our experts can help you or your client design, fabricate and install beautiful and unique natural stone staircases and features in the highest quality natural stone.

Find out more about our masonry capabilities on our website at [www.stoneworld.co.uk](http://www.stoneworld.co.uk), or contact our team on **01844 279274**. **Come and see us at London Build, stand F20.**

## ENERGY SAVING VENTILATION SOLUTIONS FROM NUAIRE & DOMUS VENTILATION AT LONDON BUILD 2024

### Stand C52

UK ventilation manufacturers Nuaire and Domus Ventilation will be exhibiting together once again at London Build (20-21st November at Olympia London) on stand C52.



At this year's London Build, Nuaire is proud to be showing its Hybrid Cooling System, designed to tackle residential overheating. Further products on show will be the Drimaster-Eco Positive Input Ventilation (PIV) system for eliminating condensation dampness; the Faith-Plus continuous running mixed flow axial fan for kitchens, bathrooms and other wet rooms; and Nuaire's metal air bricks range.

Sister company Domus Ventilation will be displaying its dMEV-NICO, a Decentralised Mechanical Extract Ventilation (dMEV) fan which provides continuous background extract ventilation for new build properties. It will be joining a wall mounted HRXE-HERA Mechanical Ventilation with Heat Recovery (MVHR) unit on the stand, alongside several award winning products, including Greenline ducting bends and non-combustible Solis Air Bricks.

[www.nuaire.co.uk](http://www.nuaire.co.uk)  
[www.domusventilation.co.uk](http://www.domusventilation.co.uk)

**STONEWORLD**  
Experts In Natural Stone

**BESPOKE MASONRY SERVICES**

STEPS | COPINGS | PIER CAPS | SCULPTURE  
PAVING | WALLING | ROCKERY | WATER FEATURES

01844 279274 | [sales@stoneworld.co.uk](mailto:sales@stoneworld.co.uk) | [www.stoneworld.co.uk](http://www.stoneworld.co.uk) | Views Farm, Great Milton, OX44 7NW

## MARMOX ANSWERS THE CALL AT LONDON BUILD 2024 WITH A1 RATED FIREBOARD

Marmox UK Ltd will showcase its A1-rated Fireboard at the London Build Fire & Security Expo (Nov 20-21, 2024). The Fireboard, made from Stone Wool with a honeycomb surface structure, is designed for internal and external wall insulation (IWI/EWI). It serves as a weatherproof render-backer externally and can be used on walls and ceilings internally, providing sound absorption and thermal insulation.



Available in 600 x 1200mm panels with thicknesses of 20mm, 50mm, and 100mm, the Fireboard features a polymer-modified mortar coating on both sides. Its compressive strength of 90kPa and thermal conductivity of 0.037 W/mK help reduce thermal bridging, surface condensation, and energy costs. The Stone Wool material is non-absorbent, ensuring durability in all weather conditions.

Marketing Manager Grant Terry emphasizes Fireboard's relevance in meeting building safety regulations and tackling fire hazards, sound, and thermal issues in various construction projects. Tested to meet multiple British safety standards, Fireboard is suitable for residential, commercial, and other sectors.

**For more information, contact Marmox UK Ltd at [sales@marmox.co.uk](mailto:sales@marmox.co.uk) or visit [www.marmox.co.uk](http://www.marmox.co.uk). Visit Marmox UK Ltd at London Build on stand number L42**

# DISCOVER ADVANCEDLIVE AT THIS YEAR'S LONDON BUILD

## CUTTING-EDGE SOLUTIONS

Advanced is thrilled to be showcasing its latest innovations in fire safety technology at this year's London Build Fire & Security Expo (November 20th-21st) - an event that brings together industry leaders and the latest advancements in construction, architecture, and safety solutions.

On display will be the next-generation MxPro 5, which now features an eight-times more powerful processor for faster response times and seamless integration with AdvancedLive, the secure, real-time fire system monitoring solution. The updated panel also includes enhanced configuration capabilities, and the versatility of supporting leading detector protocols, now including Apollo Core, for greater design freedom. With powerful false alarm management, extensive networking capacity, quicker, more intuitive programming and improved sustainability credentials, MxPro 5 continues to set the benchmark for fire panel performance, quality and ease of use.

The Advanced team will be holding regular demos of AdvancedLive, the secure, real-time fire system monitoring solution designed to offer peace of mind by enabling easy, remote management of fire systems from any internet-enabled device. The intuitive dashboard simplifies monitoring, allowing users to keep track of their fire safety systems with ease, while instant alerts ensure first responders can act quickly when incidents occur, minimising disruption and enhancing overall safety for building occupants. Service visits and call-outs can be better planned using live status checks via list or map view, backed by stringent security features that safeguard remote access. Currently available in the UK and Ireland, AdvancedLive is easy to set up with next-generation MxPro 5 panels, ensuring a seamless user experience right from the start.



*AdvancedLive real time fire panel monitoring system*



*EvacGo evacuation alert system*



*Next-generation MxPro 5 fire panel*

Advanced will also be showcasing EvacGo, an evacuation alert system built to support fire services in safely evacuating tall residential buildings in line with the BS 8629 code of practice. Designed with EN54-approved components from the MxPro 5 range, EvacGo is tailored to each building's evacuation alert zones and works with leading sounder protocols. The system's intuitive controls ensure a smooth and effective evacuation process, while the accompanying ServiceTool simplifies compliance reporting and maintenance.



**We're exhibiting**

**Come and see us at  
London Build 2024**

**We're on stand K30**

[www.advancedco.com](http://www.advancedco.com)

Members of the sales team will be on hand throughout the event to discuss how these cutting-edge solutions can be integrated into upcoming projects, so make sure to stop by stand K30 - we look forward to seeing you!

[www.advancedco.com](http://www.advancedco.com)



# LIFELONG LIVING FOUND

## BEYOND THE FAMILY KIN HOUSING

In the vibrant metropolis of Madrid stands a small architectural masterpiece that aims to be far more than just a house for age-appropriate living - it stands for the values and visions of a modern, multigenerational society. In every detail of its design principles, which are characterized by durability and flexibility, this intergenerational house embodies a concept for lifelong living. The choice of ceramic façade and tile design was not a random decision.

The story of this house begins with a vision: the vision of Ignacio G Galán and OF Architects, who were commissioned by an elderly couple to create a home that would last into the future and fulfil the needs of generations to come. The design for the “Beyond the

Family Kin Housing” will therefore be the opposite of a stand-alone family home that isolates itself. Through open and barrier-free spatial design, it encourages residents and their surroundings to create alternative forms of living in which community, retreat, individuality, and collective togetherness can claim their space equally and flexibly. In its urban design, adaptability, and free accessibility, the architecture takes into account the needs of both a long-lived aging population and future generations.

### **Ceramic façade and historic shed roof interpreted in a modern way**

The bold exterior of the building is characterized by its shed roof and the blue ceramic façade of the



“

*In its urban design, adaptability, and free accessibility, the architecture takes into account the needs of both a long-lived aging population and future generations.*

KeraTwin system from Agrob Buchtal, contrasted by the striking appearance of wavy steel panels. The façade is not only aesthetic. It combines several technological strategies in order to incorporate energy efficiency and environmental quality into the project. To ensure the sustainability of the building, the clients opted for a rear-ventilated ceramic façade on the recommendation of the architects. It is robust and durable, but can also be flexibly dismantled and converted. The construction and ceramic panels provide the resilient basic concept of the architecture by Ignacio G Galán and OF Architects with the best possible basis for creating a sustainable link between the present and the future. The movable windows in the shed roof are coupled with automatic blinds that control heat and lighting to create a well-ventilated and comfortable interior. Solar panels, supported by the distinctive green steel structure on the roof, support the operation of the underfloor heating throughout the house.





Photos: [agrob-buchta.de](http://agrob-buchta.de) / photo: ©Miguel de Guzmán Ceramic facade: KeraTwin, [agrob-buchta.de](http://agrob-buchta.de)

“

*The open design of the ground floor also encourages the neighbourhood community with a direct connection to the street.*

**Underfloor heating and tiles: An energy-efficient modern pairing**

With its focus on energy efficiency, barrier-free design, and aesthetic design, the building owners have opted for a combination of underfloor heating and thermally conductive tiles in large parts of the interior. This contributes 100% to the energy efficiency of the house because, compared to parquet or other flooring, tiles allow heat to be transferred into the room more quickly and efficiently. The duo is easy to install, sustainable to use, and unbeatably efficient in terms of durability. In summer, the tiles are nice and cool, and they are particularly welcome and often used in warm countries such as Spain. With the modern natural material tile, the architects have created a cozy and healthy room atmosphere for residents of all ages in their showcase project.

**Consistent room design with slip resistance**

Accessibility is a major theme in the Kin Family Housing, and a prerequisite for the architectural landscape of Ignacio G Galán and OF Architects, who want to promote inclusion and participation for all residents, both inside and out. While new buildings in the area tend to relegate the majority of social life to their rear-facing terraces, they encourage the formation of communities and social connections with an inner courtyard, among other things. The open design of the ground floor also encourages the neighbourhood community with a direct connection to the street. A short ramp leads from street level to the entrance. Inside the house follows a seamless sequence of spaces that cater to all needs, from toddlers to seniors, which can be explored and lived in comfortably and safely on each of its three floors in varying degrees of autonomy and community. A series of cascading gardens surround the house and offer outdoor seating alongside a small pool. A roof terrace offers additional space for gardening.

The conscious use of modern tile design has broken down architectural barriers and ensured unrestricted mobility in the home. The architects considered tiles here as an integral part of inclusive residential architecture, which is becoming increasingly important as a concept for the future. The open and flexible floor plans, and not least the ceramic façade, have created a house that can adapt flexibly to the changing needs and lifestyles of its residents today and in the future.

[facade.agrob-buchta.de](http://facade.agrob-buchta.de)



# TRUeline PRODUCTS

CELEBRATING 30 YEARS IN MANUFACTURING

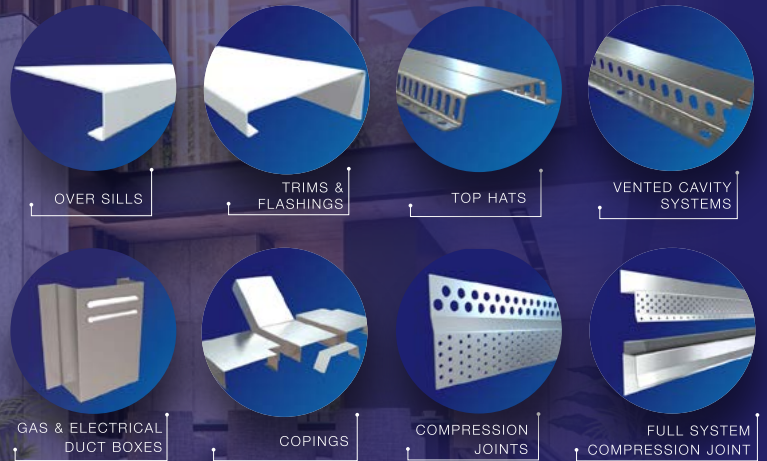
## “WE’VE GOT THE EDGE”



Trueline Products are a leading UK manufacturer specialising in Bespoke Fabrications, Expanded Metal Products and Render Beads & Profiles for External Wall Insulation Render (EWI) and Facades. From design to development, we provided an innovative and quality service for the construction industry.

- Bespoke Architectural Fabrications
- Beads & Profiles for Render, Roughcast & EWI Systems
- Pressed Aluminium Trims
- New In-House Powder Coating Paint Line
- On Site Survey & Design Team

### Bespoke Architectural Fabrications



**Call +44 (0)1562 823267**  
 ✉ [enquiries@truelineproducts.co.uk](mailto:enquiries@truelineproducts.co.uk)  
 www.truelineproducts.co.uk



Tested to EN 13823, our products achieve a fire rating of A2-S2,d0, meeting rigorous fire safety standards for building materials.



# FILON SUPASAFE

## LONG-LASTING DURABILITY AND ENHANCE SAFETY

Preston North End FC recently embarked on a project to replace the ageing GRP translucent sheeting on The Town End Stand at the historic Deepdale Stadium. The main objectives of replacing the rooflight sheets were to improve the levels of natural daylight into the north facing stand; ensure long-lasting durability; and enhance safety.

### INSTALLATION & RESULTS

The Filon Supasafe GRP rooflights, supplied through Ash & Lacy to match their 32/1000 metal profiled roof sheet, were installed during a break in fixtures by Manchester based roofing contractor, Environmental Roofing Services.

The new rooflights provide superior strength over standard GRP roof sheets, providing comparable impact resistance and load bearing capabilities to 0.7mm steel sheet; crucial for staff, visitor and maintenance team safety. Additionally, the improved level of natural daylight not only brightened the seating area it also created a more vibrant and inviting atmosphere.

### IMPACT & BENEFITS

Filon Supasafe is a triple reinforced GRP sheet that incorporates a stitch-woven glass reinforcement layer to provide increased strength and impact resistance. When tested to ACR[M]001, it achieves a Class B non-fragility rating when new and for an expected period of 30 years.

The Supasafe rooflights were manufactured to achieve an SAA, Class 1 fire rating to BS 476 Parts 3 & 7 to provide compliant fire performance for this busy footballing venue.

With improvements in the stand's safety and ambiance, the enhanced natural lighting has reduced the need for



*The new rooflights provide superior strength over standard GRP roof sheets.*

artificial lighting during events, contributing to energy cost savings and reduced energy consumption. The durability of Filon Supasafe GRP will ensure a safe, well-lit venue for many years to come.

### ENHANCED SAFETY

Filon GRP allows natural light into the north facing stand improving visibility and reducing accidents due to poor lighting. Supasafe GRP with Filon's unique light diffusing additives, which scatter light passing through, provide effective, evenly distributed, diffused daylighting without hotspots or excessive glare, reducing risk of trips or falls.

Supasafe triple reinforced GRP rooflight sheets have high levels of impact resistance and will withstand extreme weather conditions. The translucent roofing sheets are also highly durable and minimal maintenance is required to ensure long-term safety and functionality.

### CONCLUSION

Thanks to the supply chain selecting Filon as the trusted manufacturer and specifying Supasafe GRP triple reinforced, translucent, rooflight sheets, Preston North End FC have a bright, naturally lit, Town End Stand that will provide a strong and safe roof for many years to come and hopefully see many glorious victories from the Lilywhites!

[www.filon.co.uk](http://www.filon.co.uk)



# Profiled GRP rooflights & sheets **FILON HAS IT COVERED.**

**Trusted solutions from the GRP construction products innovator:** • Factory- and site-assembled rooflights • Opaque sheets • All current & discontinued profiles available • Standard & reinforced grades • Lightweight over-roofing • Chemical resistant grades • GRP barrel vault rooflights • Fixsafe safety fixing system • and more...



**t: 01543 687300**  
**e: sales@filon.co.uk**



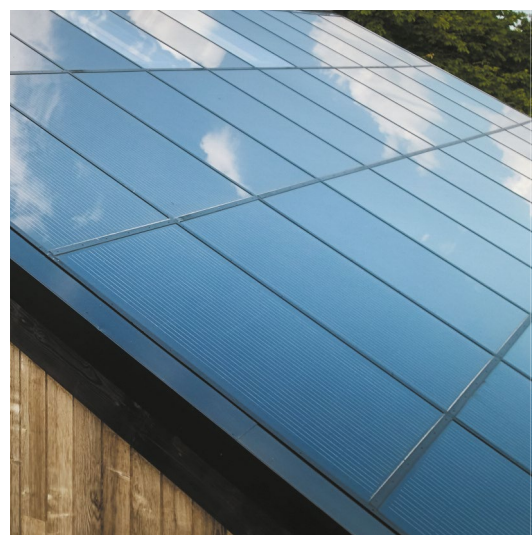
# **FILON**<sup>®</sup>

Filon Products Ltd, Unit 3 Ring Road, Zone 2, Burntwood Business Park, Burntwood, Staffs WS7 3JQ

**www.filon.co.uk**

Over **30 years experience** manufacturing  
& installing solar PV systems in Great Britain

**gbsol**<sup>®</sup>  
ARCHITECTURAL SOLAR POWER



**Infinity by GB-Sol** – the almost seamless glass roof with exceptional power generation capacity.

Custom-made solar panels mounted within a structural framing system, Infinity is finished with high-quality, welded aluminium flashings, powder coated for a perfect colour match.

The result is a sleek glass and aluminium roof covering from ridge to gutter and side to side, with huge solar power output and a comprehensive **25 year warranty** on solar performance and waterproofing.

Infinity is one of many solar PV options that can be delivered by our projects team, including solar slates, flat roof, ground and rail mounted systems. Our large and experienced technical sales team will be pleased to show you the options for your project.

Our installations can be provided with all of the additional components you require, including optimisers, batteries, remote monitoring, arc fault protection, bird proofing and firefighter isolators.



Discover more at  
[www.gb-sol.co.uk/products/infinity](http://www.gb-sol.co.uk/products/infinity)  
or scan the QR code.



## Vibrant colours and increased comfort

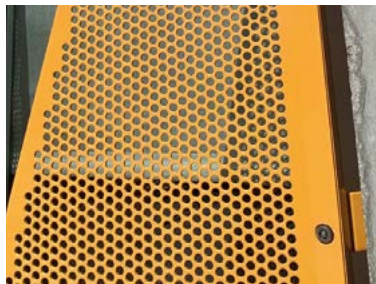
The Lillholm Elementary School outside Stockholm, Sweden, brings more life to a grey industrial area with its premium perforated sunscreens in vibrant colours. In addition, the distinctive sunscreens improve the indoor climate and increase the well-being of both teachers and students.

Close teamwork with architects and contractors has ensured an innovative, perforated solution with respect for aesthetics, the surroundings, and the building's users.

01925 839610 • info.uk@rmig.com • rmigsolutions.com



See case studies  
city-emotion.com



### Technical characteristics

Size of the project: 450 m<sup>2</sup>  
Material: Aluminium  
Pattern: Round holes  
Thickness: 3.0 mm  
Surface treatment: Powder Coating  
Finishing operation: Bending



## BRICK WORKS

For house insulation, renovation, decoration



TOPAAS LTD

Tel. +44(0)2085144010 | Mob. +44(0)7545966558

www.brick-panels.co.uk

## THE STRATUS ALUMINIUM LANTERN

Flat roof extensions and contemporary orangeries are a key focus for homeowners looking to add valuable extra living space to their homes. The technical features and stand out good looks of the Stratus Aluminium Lantern Roof - mean that

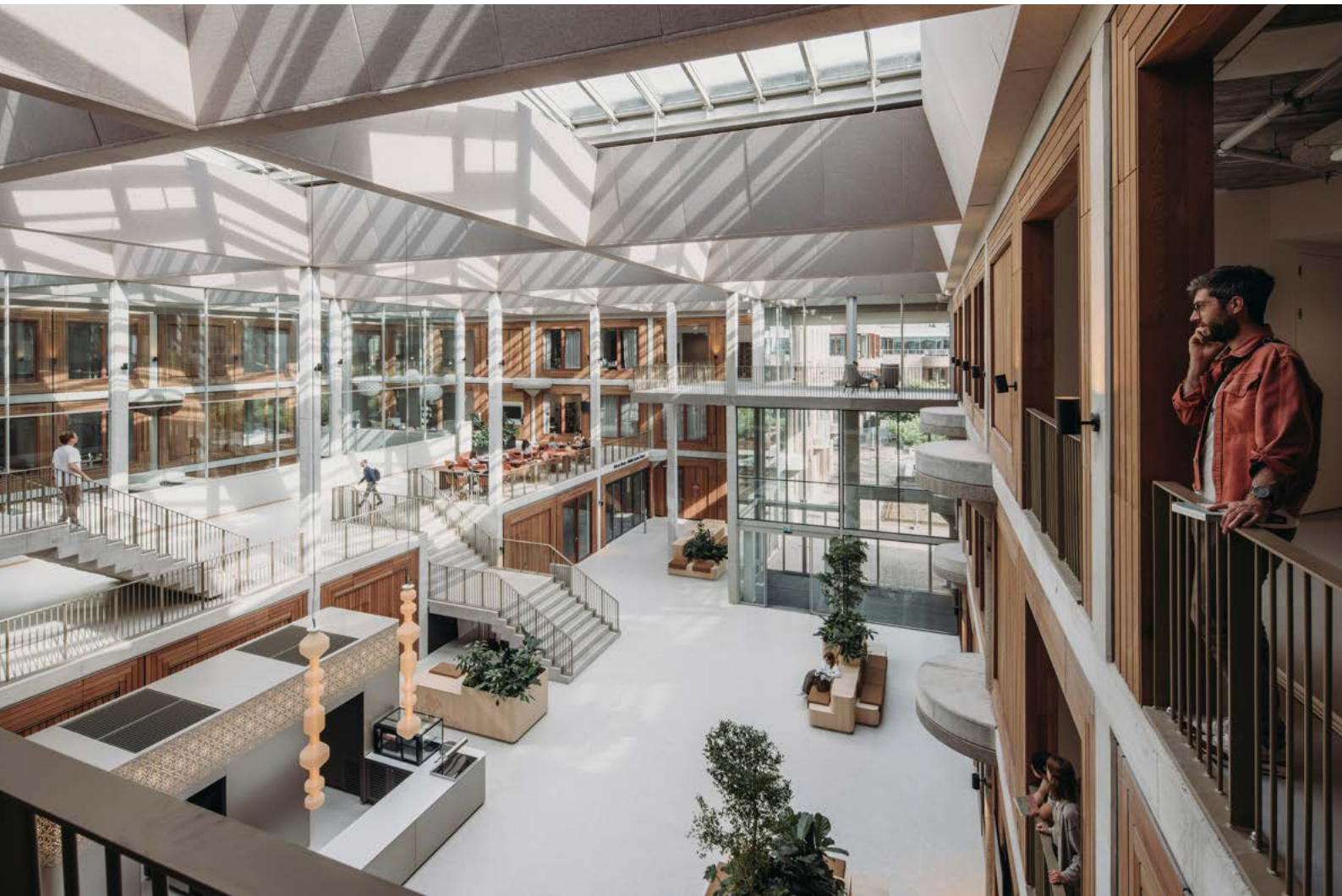


its customers are perfectly positioned to take advantage of this booming market with a premium product and superb support.

Stratus Aluminium Lantern at a glance:

- Up to 65% more thermally efficient than conventional aluminium roof systems.
- Fixed at 20° pitch, this allows the system to use the incredibly discreet purpose designed top caps and internal covers, without unsightly gaps to rafter ends.
- 66% smaller ridge than standard systems for beautiful aesthetics.
- Hard wearing aluminium exterior for a premium, architectural look.
- Quick and easy to install - less time on site means less disruption for homeowners.
- Available in any RAL colour, mix and match colours on the internal and externals.
- Available in a range of designs, including a four-way pyramid.

To find out more contact Marketing@stratus-lantern.co.uk or take a look at the website <https://bit.ly/3FQLvVc>, featuring lots of information.



# COMPLETION OF HERTA MOHR BUILDING LEIDEN UNIVERSITY

HERTA MOHR IS THE RESULT OF A SUSTAINABLE, CIRCULAR RENOVATION THAT RESPECTS AND ENHANCES THE ORIGINAL DESIGN

Commissioned by Leiden University, De Zwarte Hond has completed the circular renovation and extension of the former Cluster Zuid building of the Faculty of Humanities. Architect Joop van Stigt designed Cluster Zuid for the Faculty of Humanities of Leiden University in the late 1970s. This impressive example of structuralist architecture was re-inaugurated on 8 October as Herta Mohr. It now offers 11,400 m<sup>2</sup> of space, plus car parking, with more than 700 teaching spaces and self-study places, two lecture theatres, work and meeting rooms, and common rooms. The building also houses the libraries of Leiden's African Studies Centre and the Middle Eastern Studies program.





“

*The building also houses the libraries of Leiden's African Studies Centre and the Middle Eastern Studies program.*

### **Better orientation and light boost unity**

Cluster Zuid originally consisted of seven separate 'houses'. Orientation in the building was difficult: the two courtyards were very similar and the narrow alleyways made the interior spaces dark. In addition, the dark ceilings and small windows, some with wired glass, created a closed and gloomy atmosphere.

To improve this, the central house was demolished and replaced by a new large central heart with lots of daylight. This makes it easier for visitors to better orient themselves from the central space, and the bright atrium creates a cohesive whole. New diagonal sightlines have been created from the existing houses to the heart.

The second floor was completely renovated and an eighth house with an anodised aluminium façade was added on the Maliebaan side. Van Stigt's original design also included a house here, but it was never built.

Due to the protected cityscape, which means that Van Stigt's original structure is a listed building, the changes to the façade have been kept to a minimum. Particularly striking are the prefabricated concrete columns with conical tops, some with round balconies, which are left fully visible in the renovated building.





The welcoming building opens up to the city: the entrance connects the square outside with the square inside, creating interaction with the environment. There is more space for people to meet, both inside at the coffee corner, and outside around the seating elements in the square. The building is part of the Humanity Campus, which will be improved in the coming years to better connect with the city and the green canal park. This building is the first step in this process.

A renovation that prioritizes reuse and sustainability. During the development of this building, 72% more sustainable measures were implemented than were required by the building regulations. By selecting high-quality materials with low emissions of unhealthy substances throughout the building, Herta Mohr now has a BREEAM Excellent certification. Insulation, solar panels, and a heat/cold storage system were also added.

In addition, new, efficient installations were installed to meet the high sustainability requirements. However, the existing structure could not support these changes, so the second floor was removed and a completely new structure was built on top of the building. This intervention has combined the separate 'houses' into one whole, with the technical installations fully integrated.

### Reuse

The reuse of most of the original building and façade is a notable achievement. Concrete columns from the demolished central house were reused in the extension. Other materials were also given a new life. For example, the old Sequoia redwood ceiling panels were transformed into wall cladding in the atrium. These slats were carefully worked on, stripped of nails, and milled in collaboration with the social workshop BWRI. The specific pattern of the slats meant that everything could be prefabricated and installed, minimizing waste.

### Respect for the existing

The renovation of the Cluster Zuid building complements and reinforces the existing design. The refurbished building reflects the spirit of Joop van Stigt as well as that of the present. By opting for renovation and sustainability, Herta Mohr has gained a new place in the collective memory of Leiden.

The project was carried out in collaboration with Combinatie Cluster Zuid, consisting of Constructif and Koninklijke Kuijpers. The project also included excellent cooperation from Aronsohn, Buro Bouwfysica, BWRI, KCAP, C2N, Fokkema & Partners Architecten, Harryvan, Nelissen Ingenieursbureau, New Horizon, and Pieters Bouwtechniek.

[dezwartehond.nl](http://dezwartehond.nl)



# ARCHETECH

Turning Dreams into Reality



## FREE DIGITAL MAGAZINE SUBSCRIPTION

The Archetech magazine is an insightful information source for **Architects, Architectural Technologists** and **Interior Designers**. We feature lead stories on current projects, industry news and case studies so that our readers have the opportunity to keep up to date in the ever changing world of architecture and design.



Subscription enquiries:  
Call 01304 806039  
Email: [info@archetech.co.uk](mailto:info@archetech.co.uk)

Advertising enquiries:  
Steve Hawkins - 01227 936974  
Email: [steve@archetech.co.uk](mailto:steve@archetech.co.uk)

Editorial submissions or enquiries:  
Antony Holter - 01304 806039  
Email: [antony@archetech.co.uk](mailto:antony@archetech.co.uk)

# Closing the performance gap to meet thermal targets

Achieve specified thermal performance with stone wool insulation that helps to close the thermal performance gap – supported by independent testing.

The new ROCKWOOL Technical Bulletin details:

- The results of independent thermal testing
- How ROCKWOOL stone wool insulation knits together to form a continuous insulating layer
- How ROCKWOOL products can contribute to improved thermal performance



Download the Technical Bulletin:



[rockwool.com/uk/technical-bulletin](https://rockwool.com/uk/technical-bulletin)



[rockwool.com/uk](https://rockwool.com/uk)

