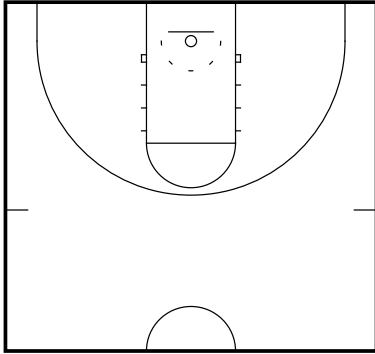


Pick and Roll Defense

"Switch" Coverage

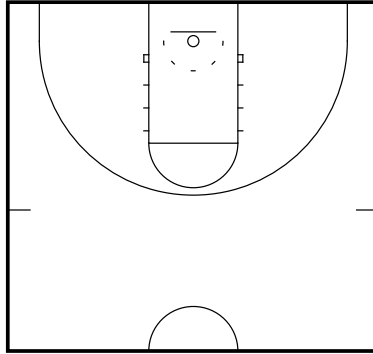
Pick and Roll Defense- "Switch"
Frame 1



"SWITCH"

Ball handler defender and screener defender switch their defensive assignments when a on-ball screen occurs.

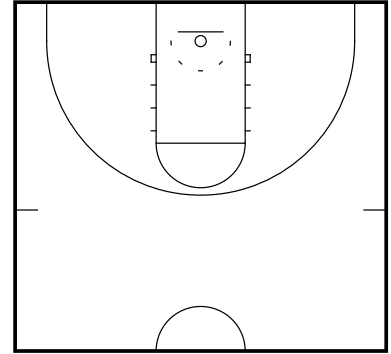
Pick and Roll Defense- "Switch"
Frame 2



Synonyms:

-"Jump Switch"

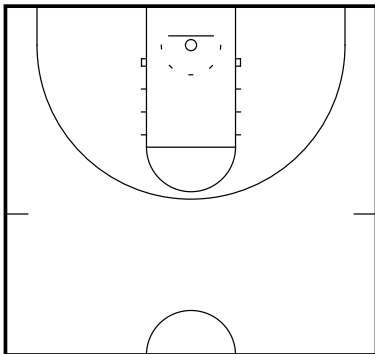
Pick and Roll Defense- "Switch"
Frame 3



Advantages:

- Takes away direct looks and scoring options
- Simple tactic if you have versatile personnel
- Does not require help or rotation from other defenders
- Can slow down pace and rhythm of offense

Pick and Roll Defense- "Switch"
Frame 4



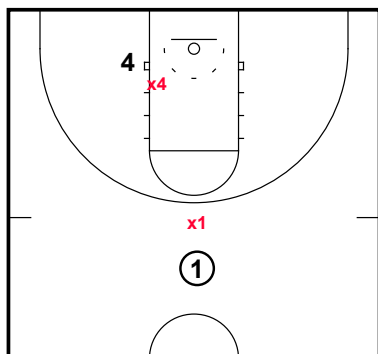
Disadvantages:

- Can create potential mismatch for ball handler and/or screener
- Slips can be difficult to guard and lead to opportunities for the offense
- Can create foul pressure on the defense

Pick and Roll Defense

"Switch" Coverage

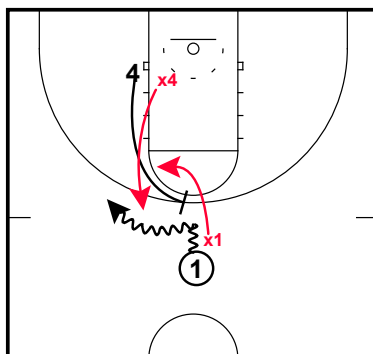
Pick and Roll Defense- Breakdown Middle
Ball Screen (Switch)
Frame 1



One of the most effective ways of defending the ball screen if you have versatile personnel is the **"SWITCH"**.

The switch is a great way to eliminate any pick and pop situation when facing a skilled big and it also eliminates a lot of the help responsibilities that puts stress on the defense in other pick and roll coverages.

Pick and Roll Defense- Breakdown Middle
Ball Screen (Switch)
Frame 2



As soon as x5 recognizes that the offense is setting a ball screen, he immediately communicates with x1 by calling "screen [direction]".

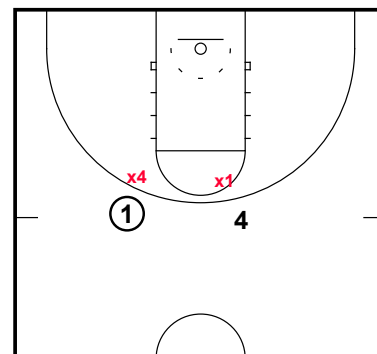
When x1 hears x4 call out the screen, he immediately shifts his positioning himself to force the ball into the screen.

As the ball approaches the screen, x4 actively jumps out and attacks the ball. He does not sit back below the level of the screen and allow the ball handler to turn the corner.

x1 gets to screen and then dives under the screener to not allow the free roll to the basket or the slip of the screen.

Note: A switch does not occur until the ball has broken the plane of the screener's shoulder. Both defenders need to have a high level of concentration and communication so there is no confusion.

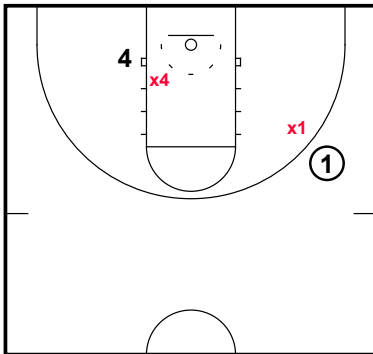
Pick and Roll Defense- Breakdown Middle
Ball Screen (Switch)
Frame 3



Pick and Roll Defense

"Switch" Coverage

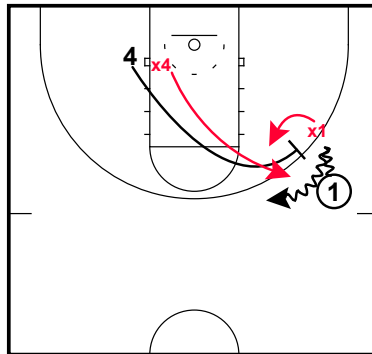
Pick and Roll Defense- Breakdown Wing
Ball Screen (Switch)
Frame 1



One of the most effective ways of defending the ball screen if you have versatile personnel is the **"SWITCH"**.

The switch is a great way to eliminate any pick and pop situation when facing a skilled big and it also eliminates a lot of the help responsibilities that puts stress on the defense in other pick and roll coverages.

Pick and Roll Defense- Breakdown Wing
Ball Screen (Switch)
Frame 2



As soon as x5 recognizes that the offense is setting a ball screen, he immediately communicates with x1 by calling "screen [direction]".

When x1 hears x4 call out the screen, he immediately shifts his positioning himself to force the ball into the screen.

As the ball approaches the screen, x4 actively jumps out and attacks the ball. He does not sit back below the level of the screen and allow the ball handler to turn the corner.

x1 gets to screen and then dives under the screener to not allow the free roll to the basket or the slip of the screen.

Note: A switch does not occur until the ball has broken the plane of the screener's shoulder. Both defenders need to have a high level of concentration and communication so there is no confusion.

Pick and Roll Defense- Breakdown Wing
Ball Screen (Switch)
Frame 3

