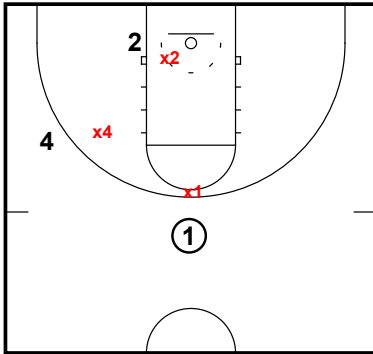


# Off Ball- Screen Own Man

## General

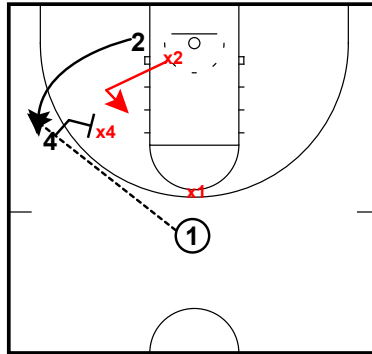
Attacking the Switch- Screen Own Man  
Concepts



One way of attacking the switch is to **screen your own man.**

Often times when teams are switching all screens, players will "area switch." This is where instead of coming together and creating a tight switch, they will switch without chasing their man as the offense players come together. While there are some benefits to this method of switching, it is often done with out of laziness and with poor communication.

Attacking the Switch- Screen Own Man  
Concepts

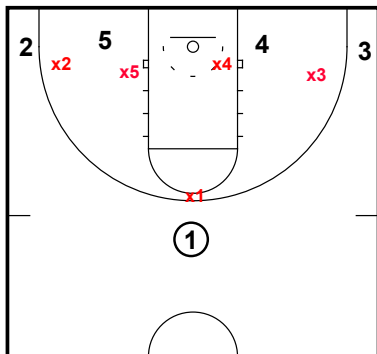


The offense can take advantage of this by reading the situation and having the screener screen his own man as he attempts to switch out on the man receiving the screen.

# Off Ball- Screen Own Man

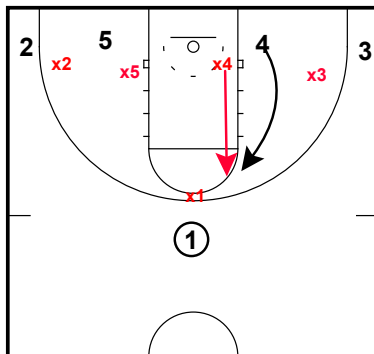
## General

Attacking the Switch- Screen Own Man  
(BS)  
Concepts

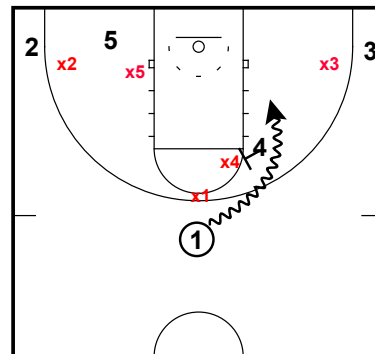


One way of attacking the switch is to **screen your own man.**

Attacking the Switch- Screen Own Man  
(BS)  
Concepts



Attacking the Switch- Screen Own Man  
(BS)  
Concepts



The offense can take advantage of this by reading the situation and having the screener screen his own man as he attempts to switch out on the man receiving the screen.