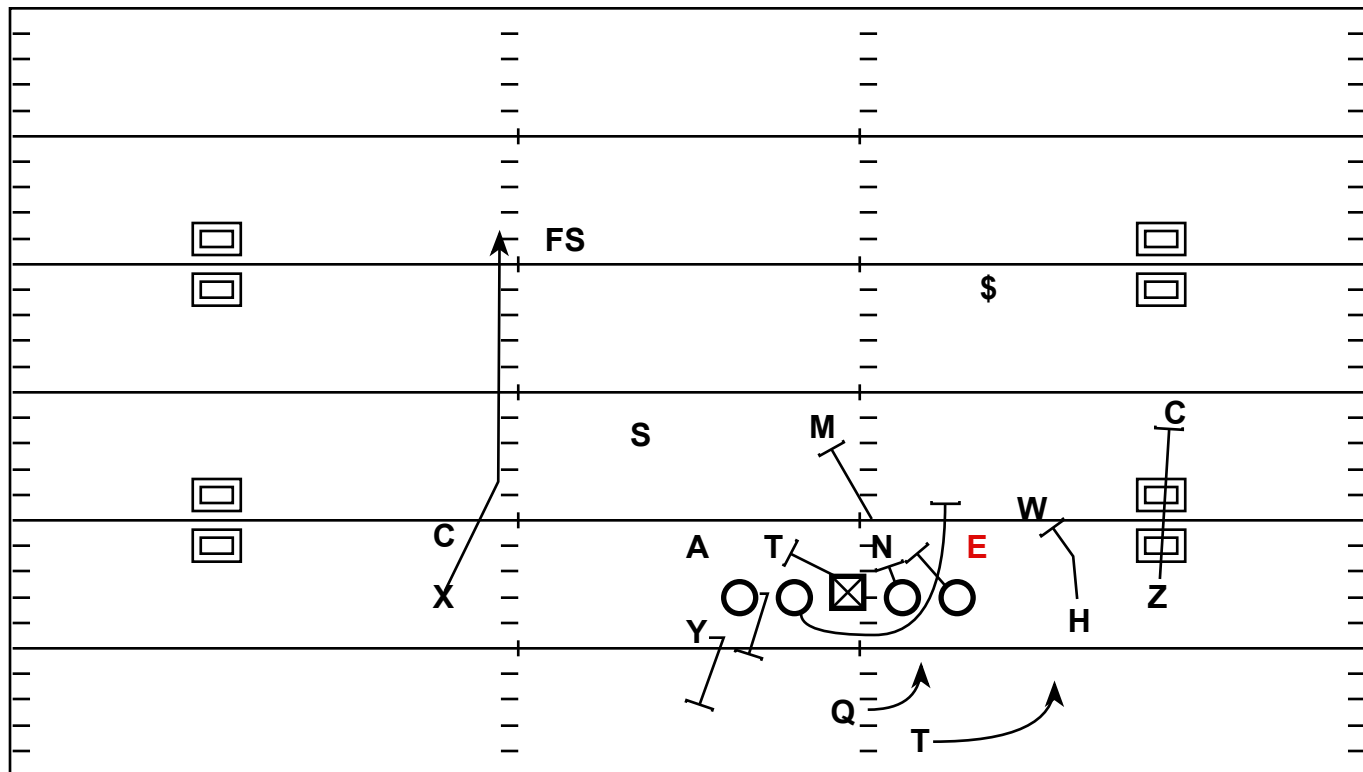


2x2 Wing: Power Read Toss

Quarter	Time	D & D	YD Line	Hash	Score
3rd	4:00	2 - 10	32	R	28 - 10



Strategy: Use QB Run Game with the Back-Up QB. Cancel out the Playside EMLOS

QB Progression/Read: Read the Playside EMLOS - If Keep Hug the Wall and Follow the Wrap

X - Distraction Inside Vertical

H - Block for the Toss

Y - C-Gap to Hinge

Z - Block Corner

T - Establish Toss Relationship
read block of #2

LT - B-Gap to Hinge

LG - Wrap Pull to Point (1st
Playside Linebacker)

C - Back Block

RG - Combo 2i to Backside
Linebacker

RT - Combo 2i To Backside
Linebacker