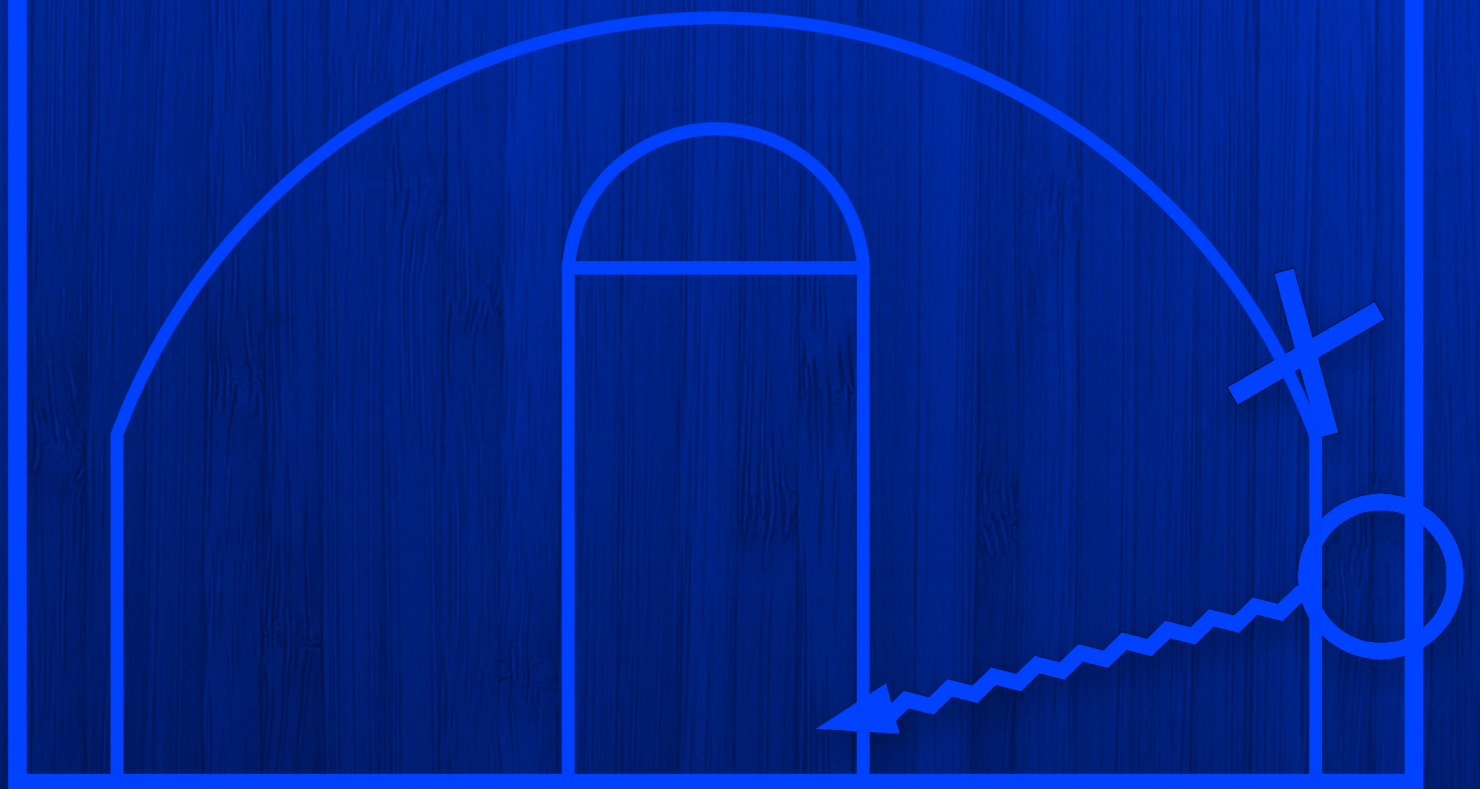


# BUTLER PLAYBOOK

ASSEMBLED BY: TIM BERGSTRASER



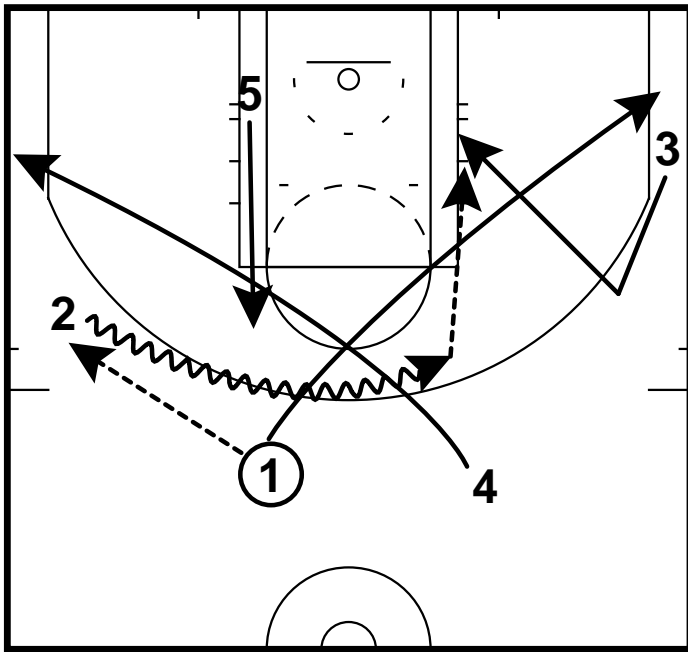
# Butler

## Table of Contents

1.	Chin	2
2.	Fist	10
3.	Ram	15
4.	Stack	22
5.	Ball Screen	25
6.	Top Catch	27
7.	Misc	29
8.	Hammer	30
9.	Weave	31
10.	BLOB	32
11.	SLOB	35

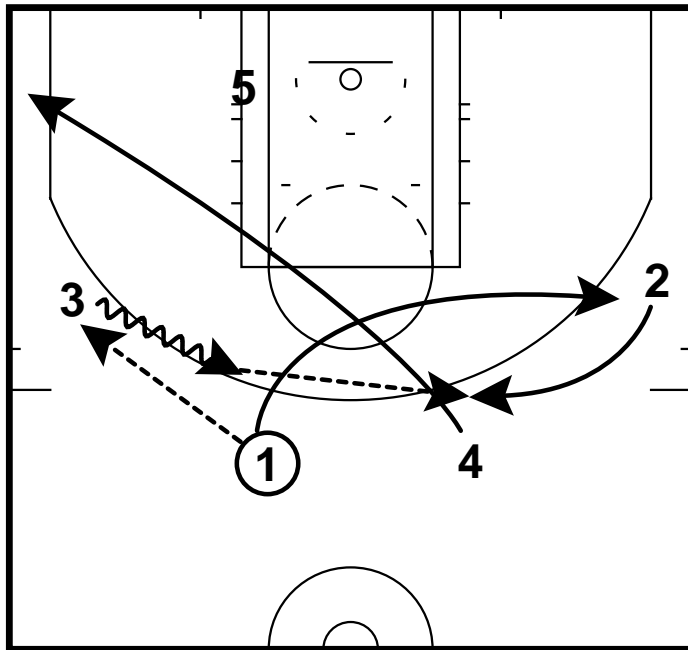
# Chin

Chin Backdoor  
Chin

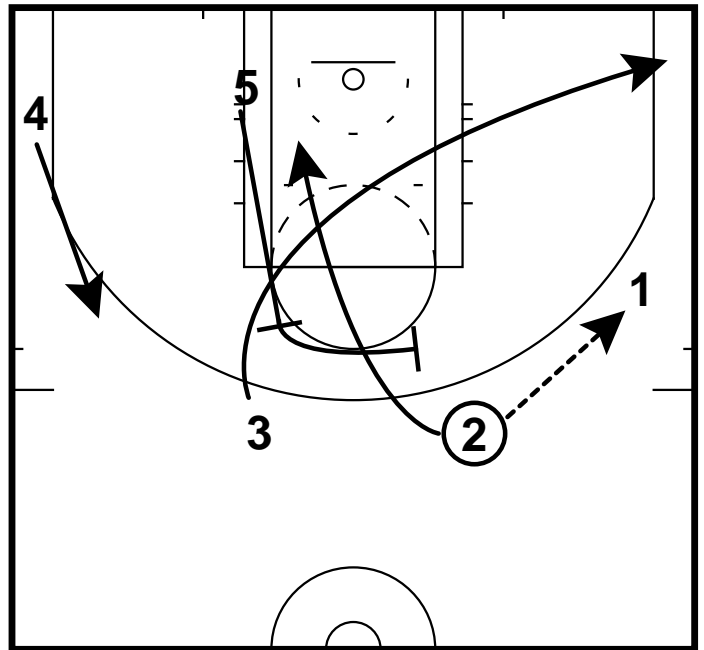


# Chin

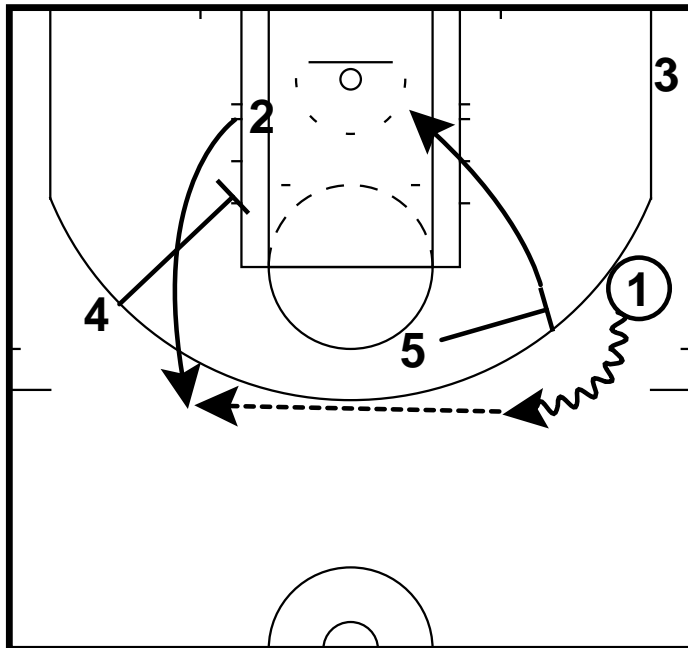
Chin Boomerang  
Chin



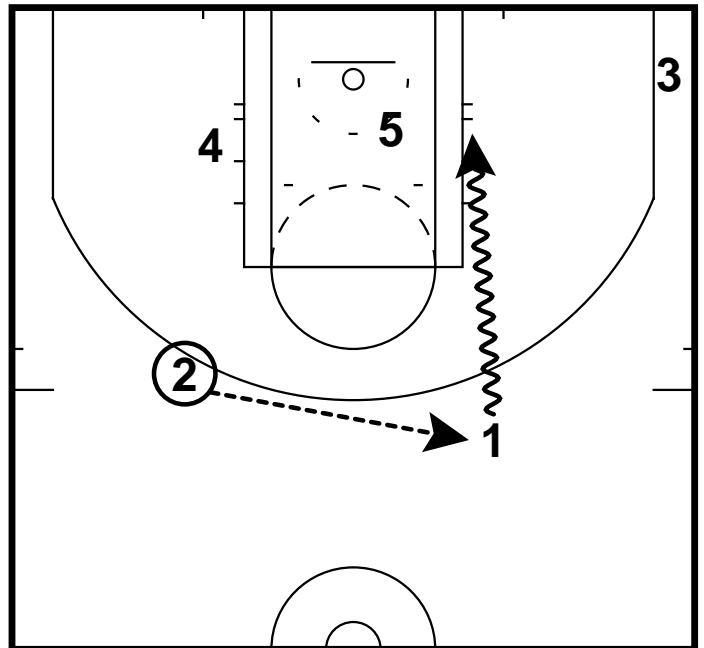
Chin Boomerang  
Chin



Chin Boomerang  
Chin

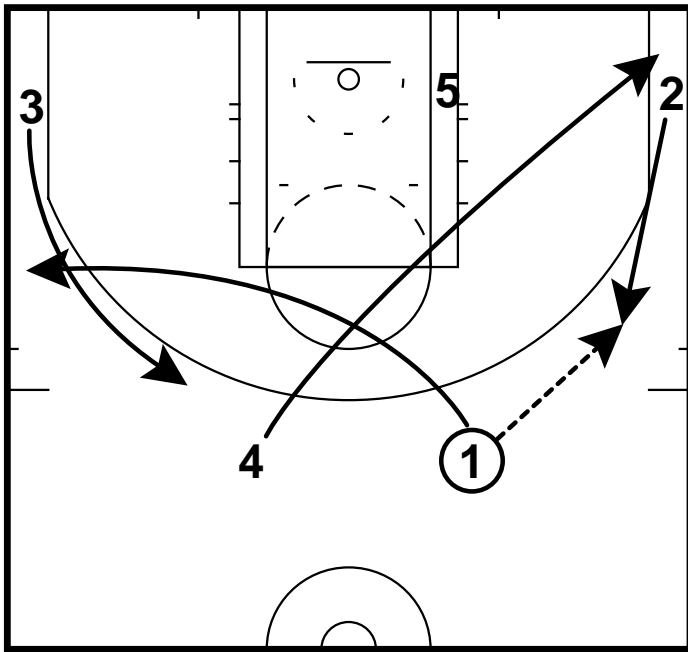


Chin Boomerang  
Chin

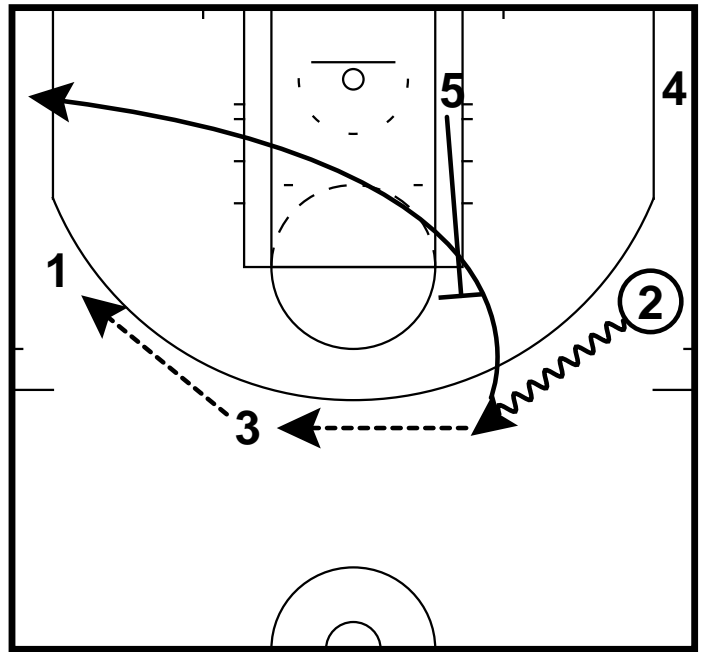


# Chin

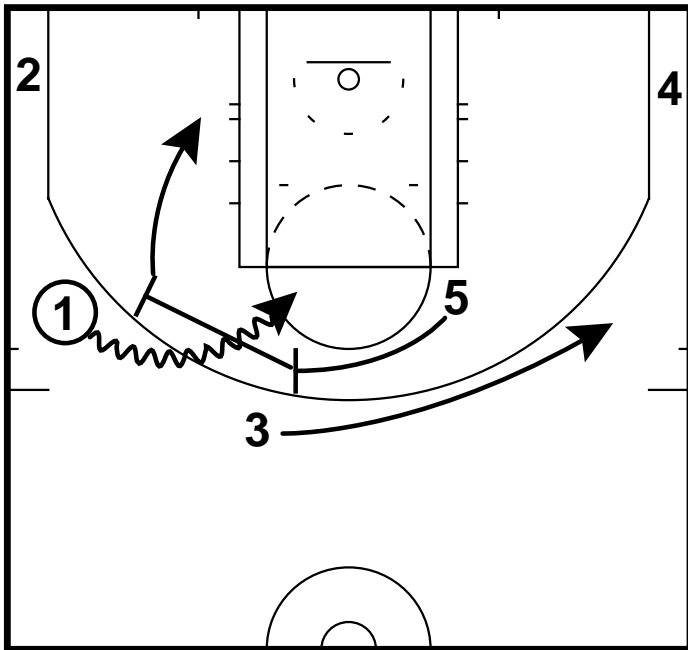
Chin BS  
Chin



Chin BS  
Chin

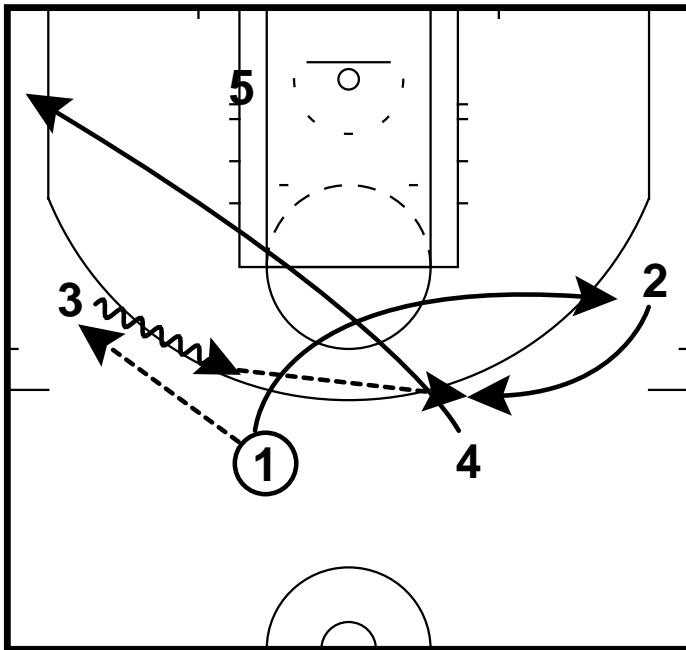


Chin BS  
Chin

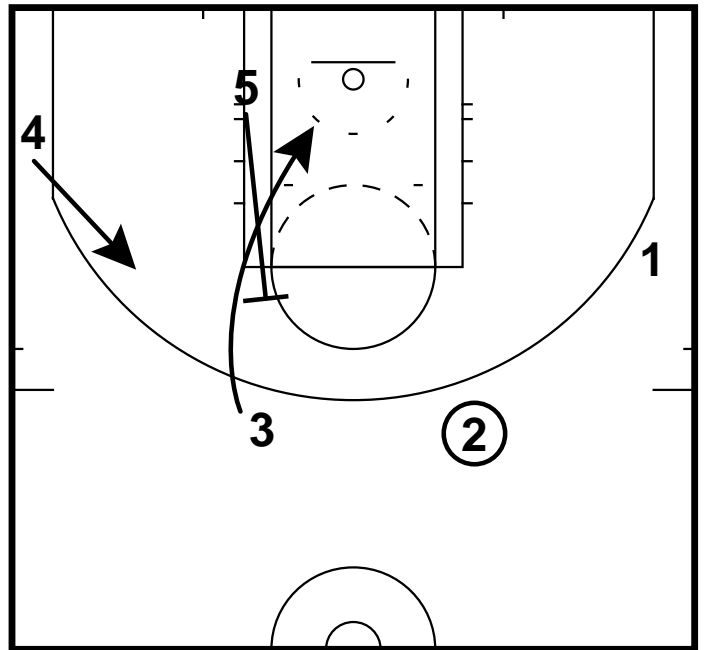


# Chin

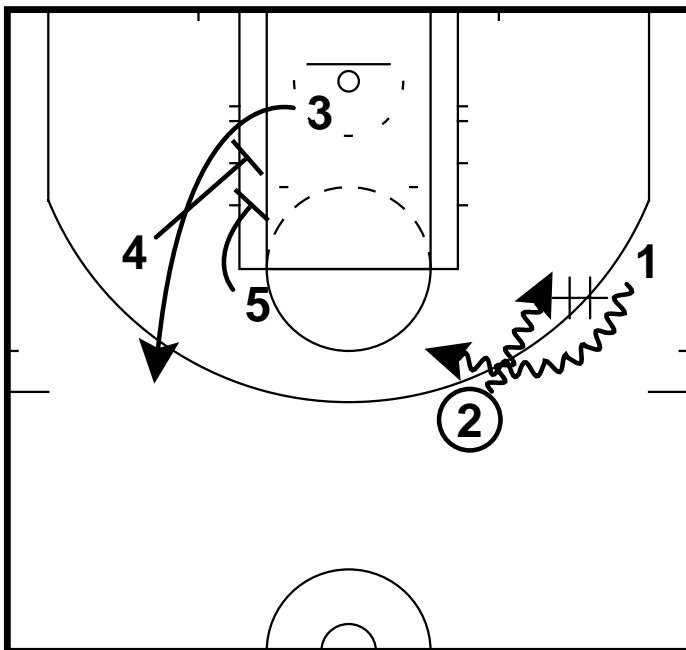
Chin Double  
Chin



Chin Double  
Chin

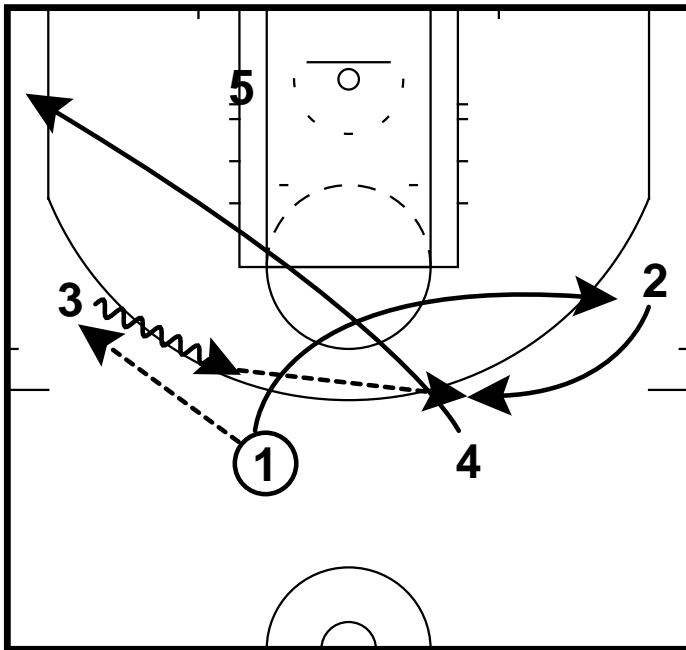


Chin Double  
Chin

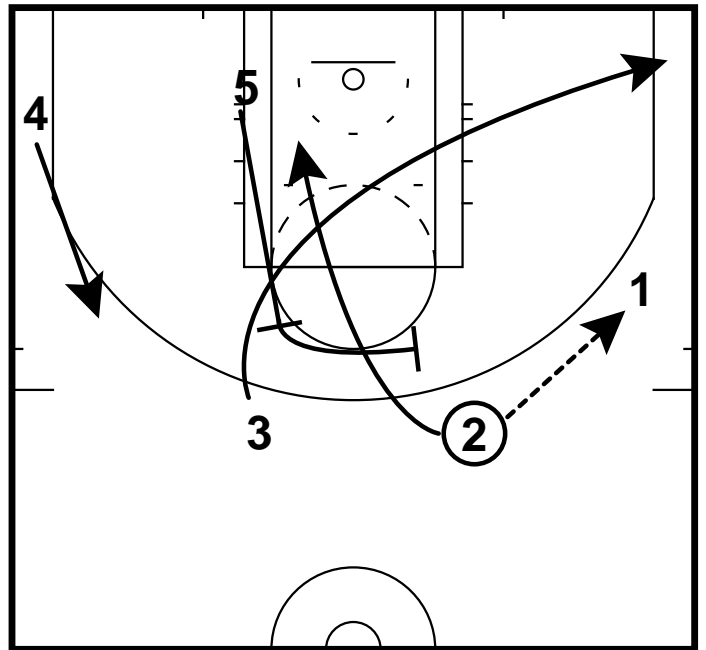


# Chin

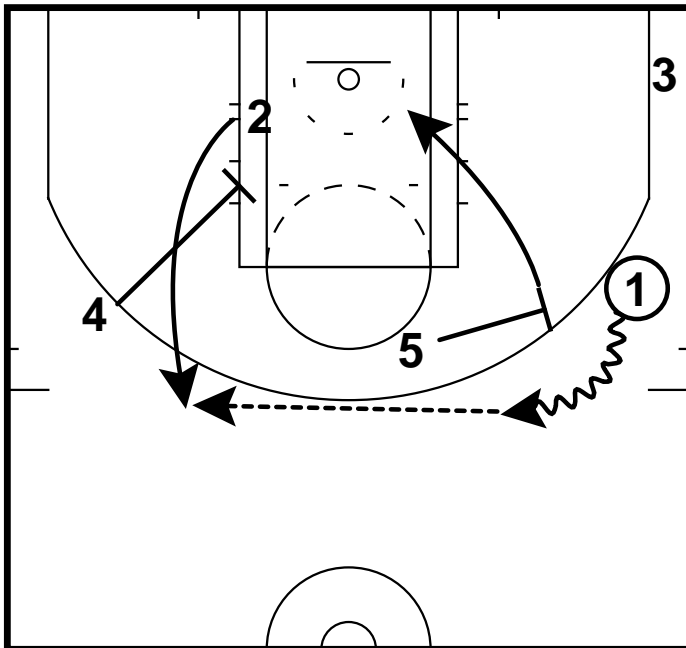
Chin Down  
Chin



Chin Down  
Chin

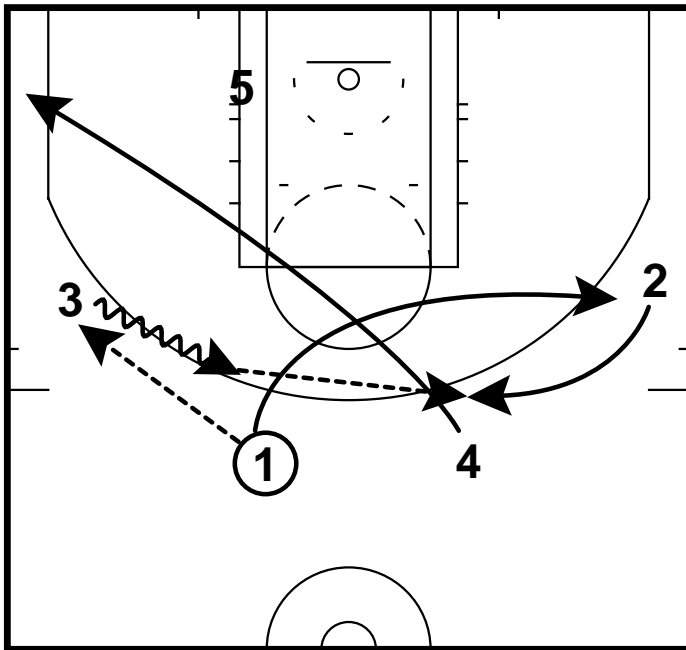


Chin Down  
Chin

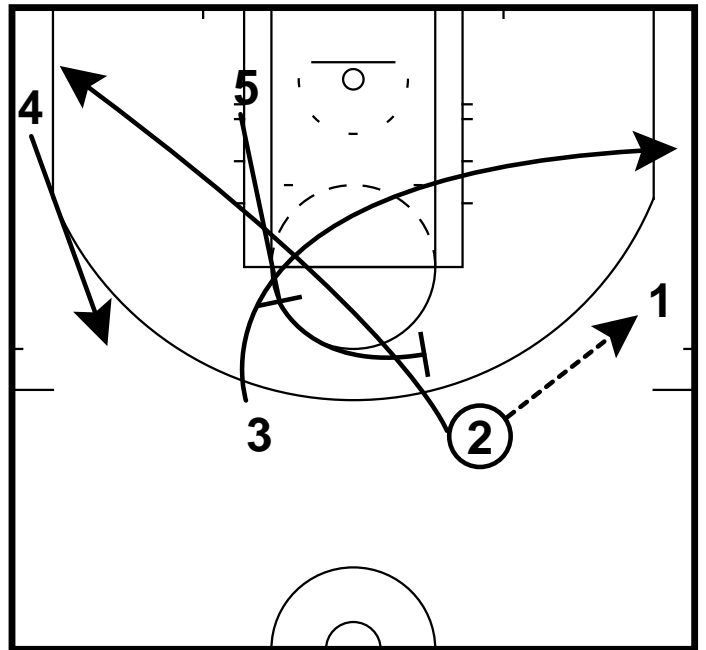


# Chin

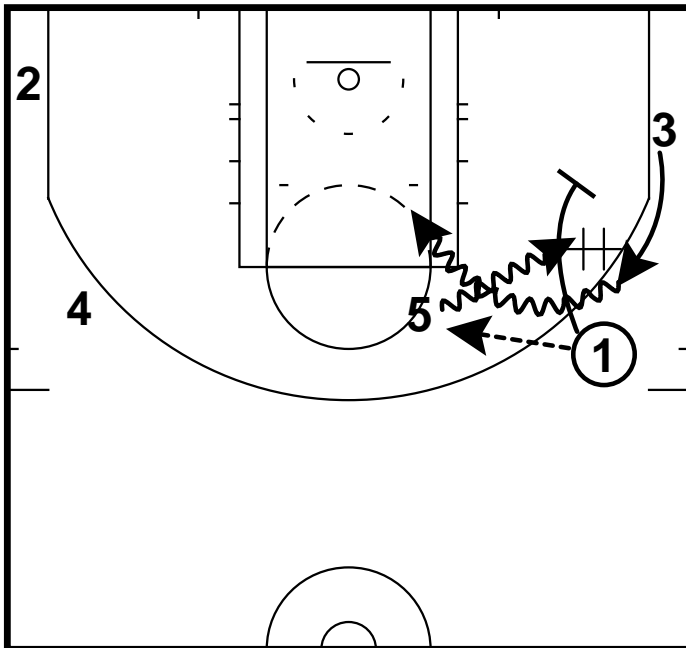
Chin Down Handoff  
Chin



Chin Down Handoff  
Chin



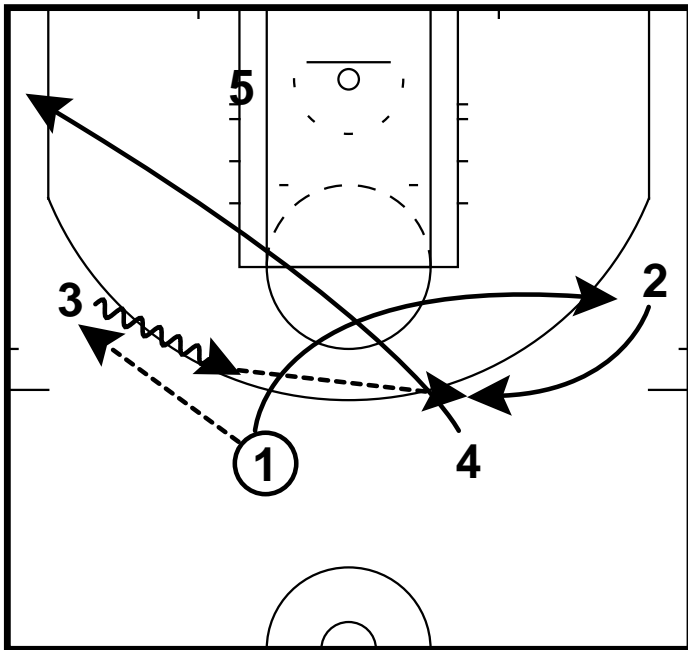
Chin Down Handoff  
Chin



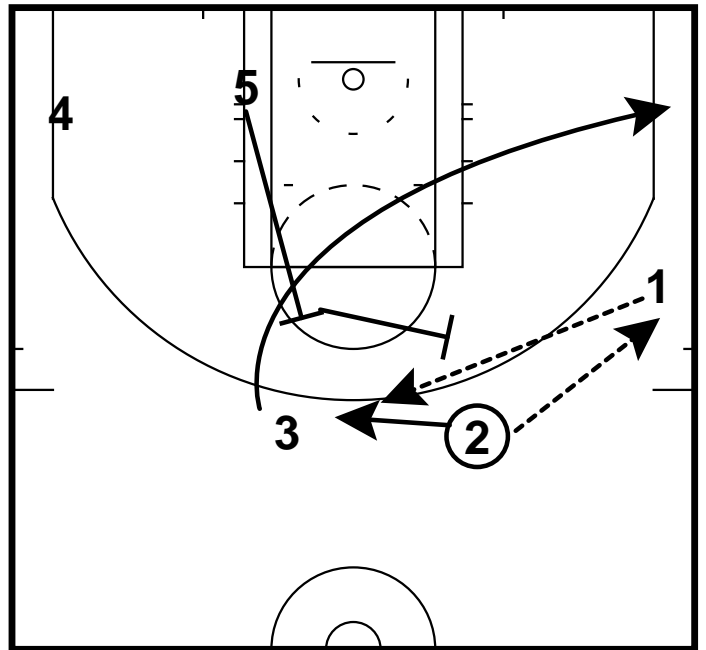


# Chin

Chin Flare  
Chin

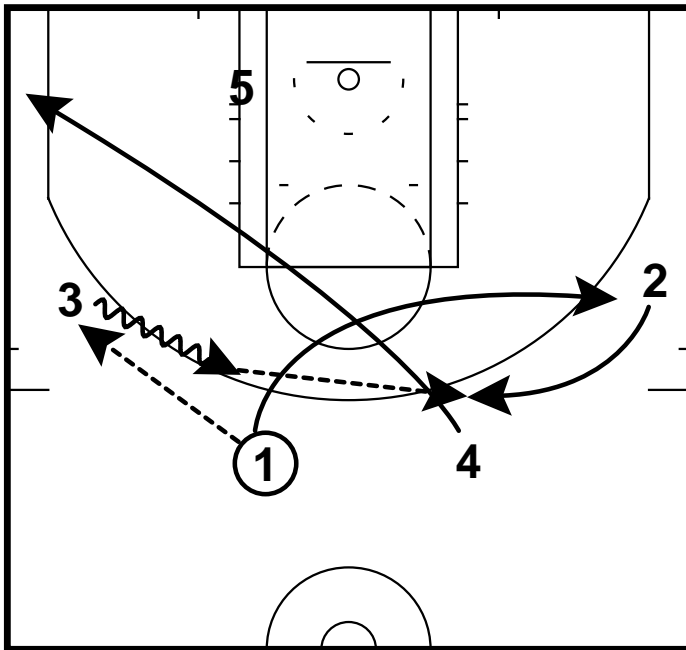


Chin Flare  
Chin

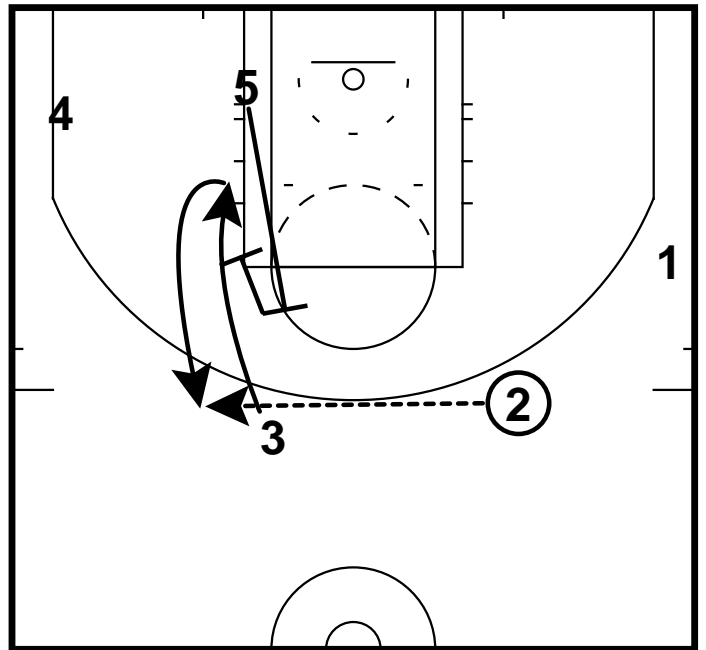


# Chin

Chin Rewind  
Chin

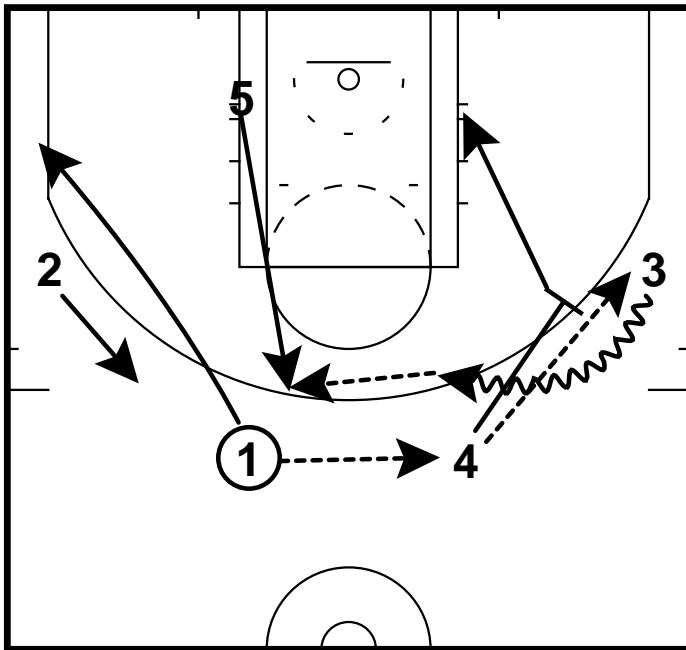


Chin Rewind  
Chin

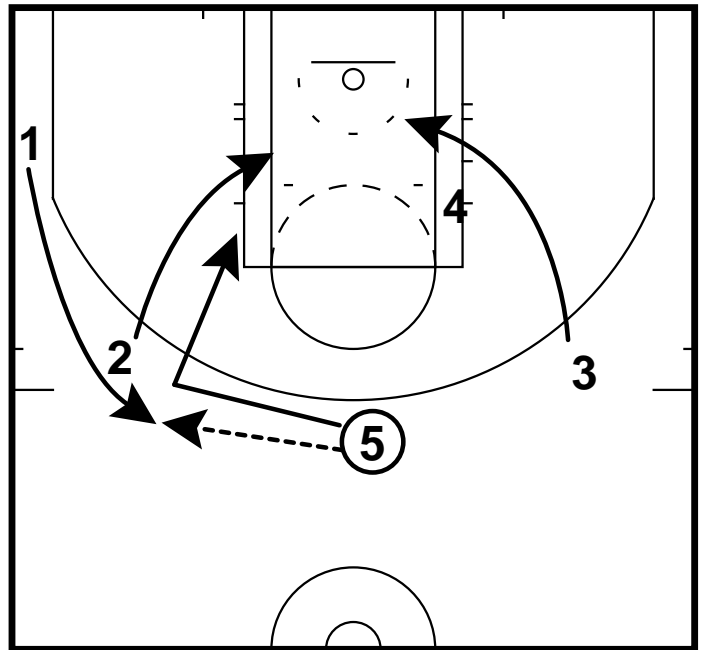


# Fist

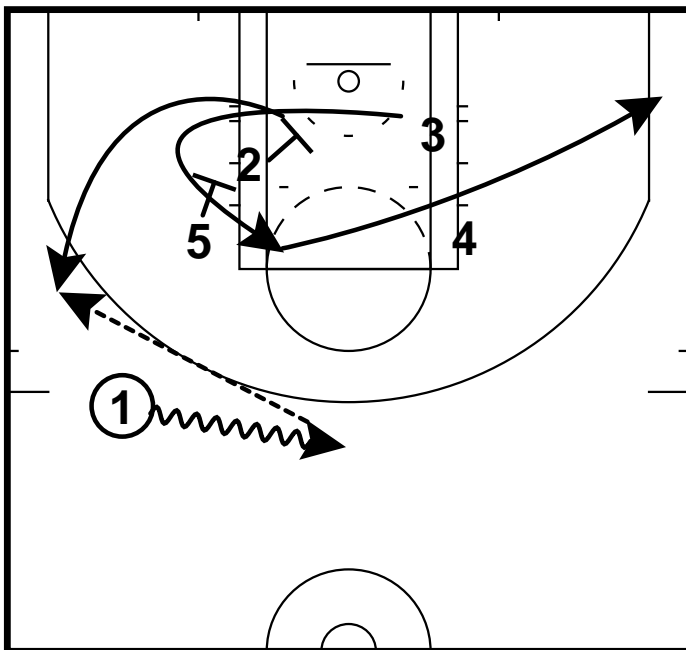
Fist Double Rewind  
Fist



Fist Double Rewind  
Fist

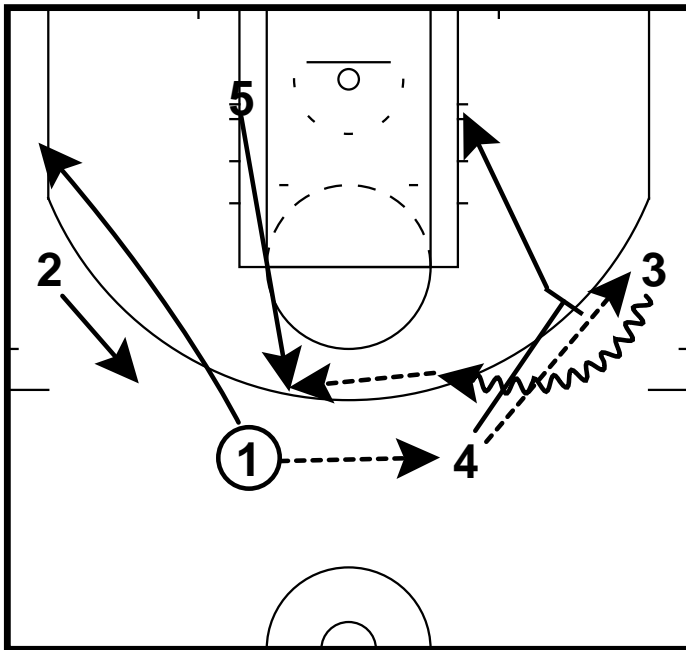


Fist Double Rewind  
Fist

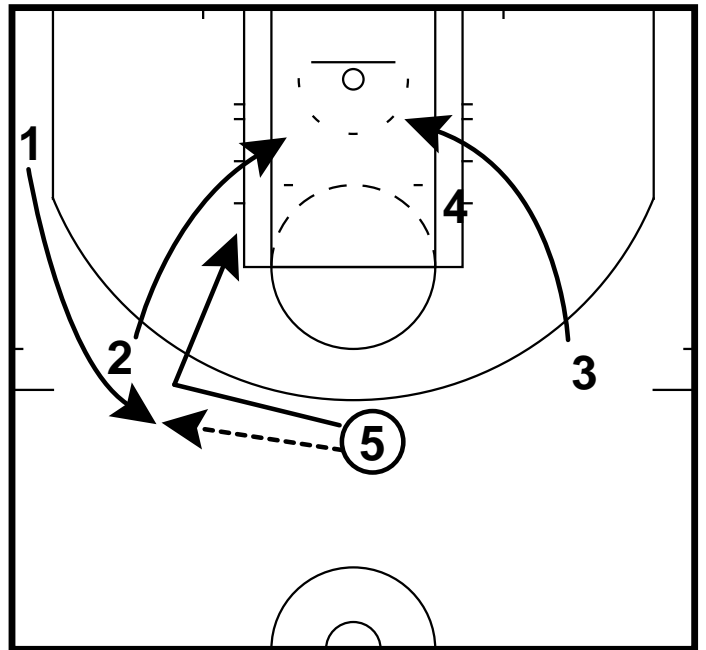


# Fist

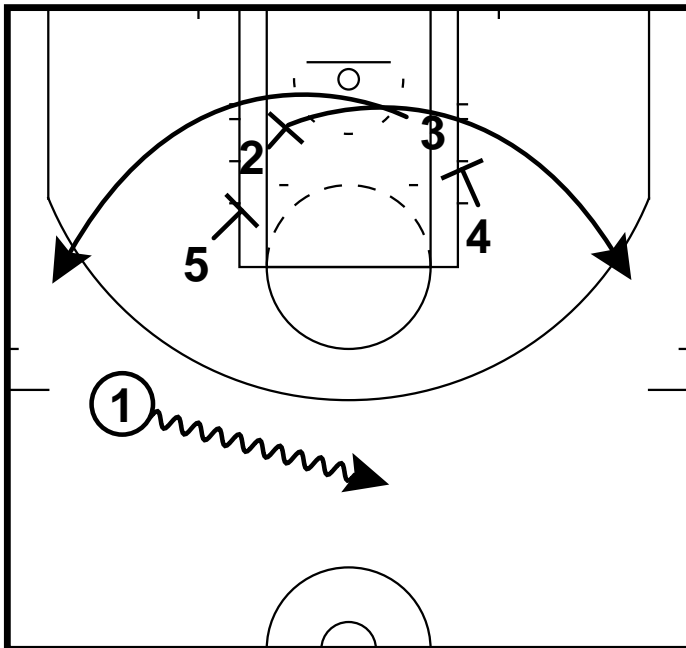
Fist Double Single  
Fist



Fist Double Single  
Fist

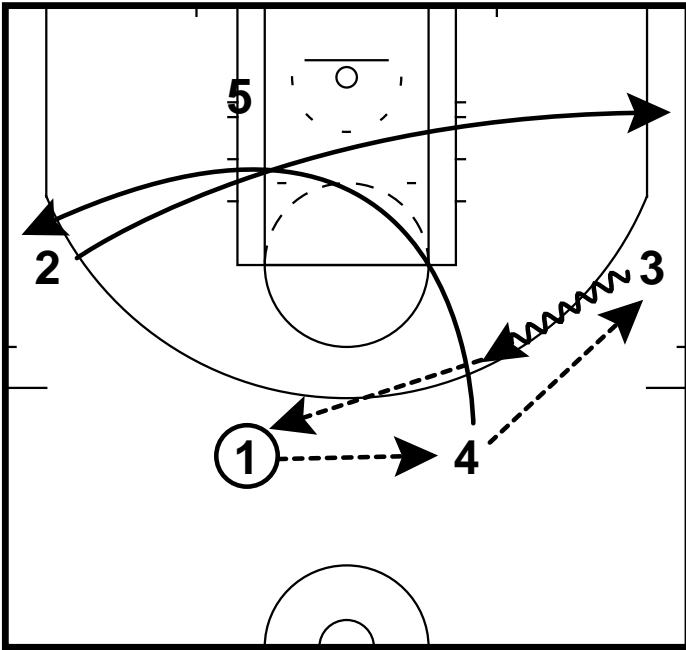


Fist Double Single  
Fist

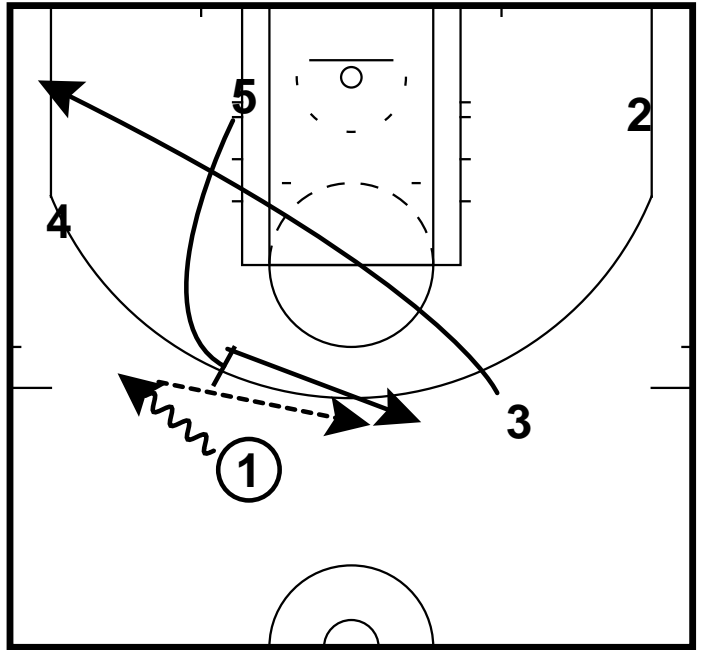


# Fist

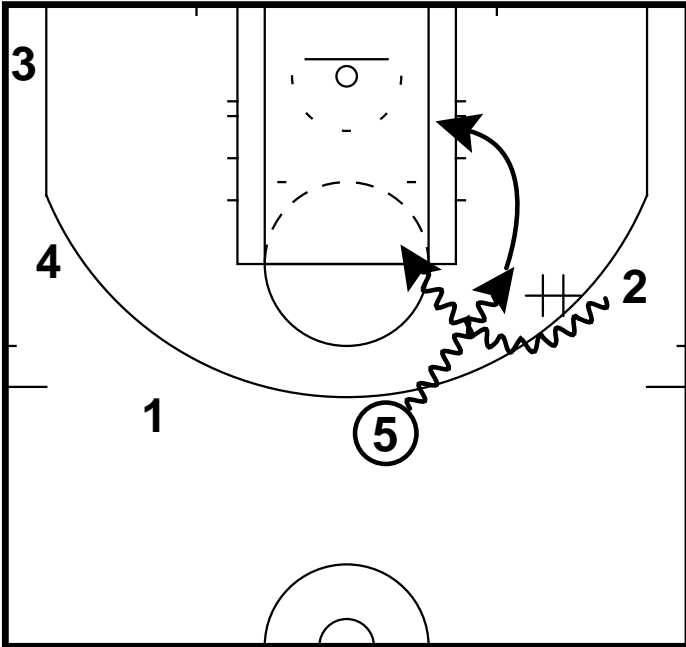
Fist P&P Rip  
Fist



Fist P&P Rip  
Fist

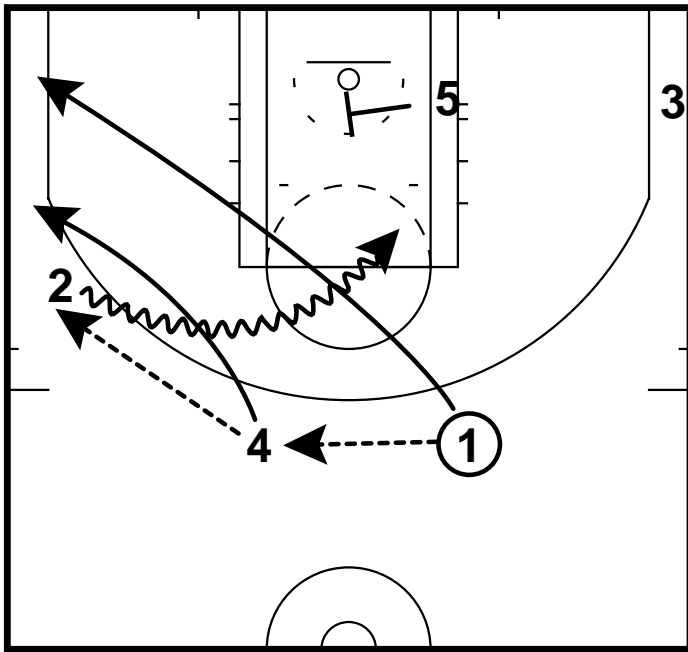


Fist P&P Rip  
Fist



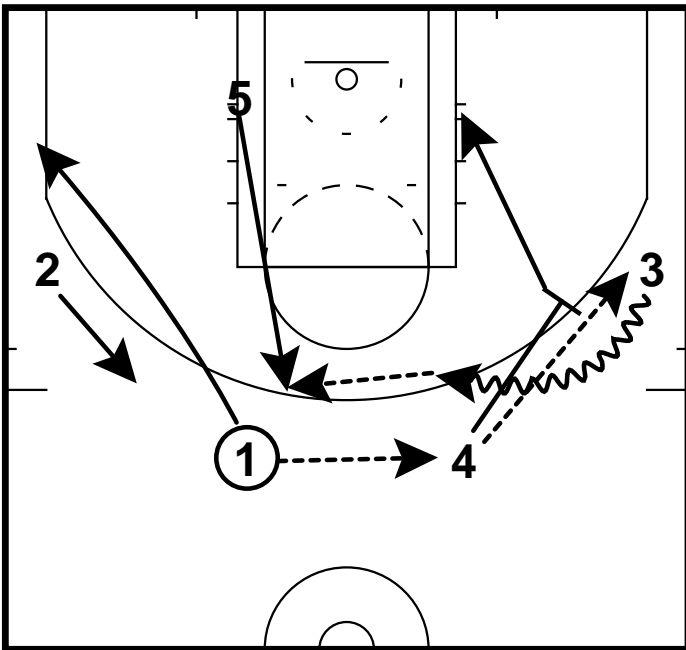
# Fist

Fist Slice  
Fist

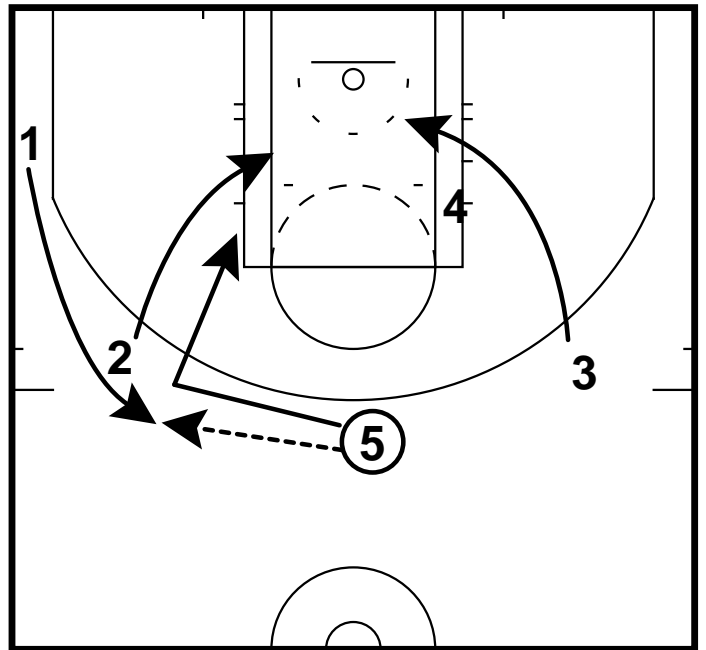


# Fist

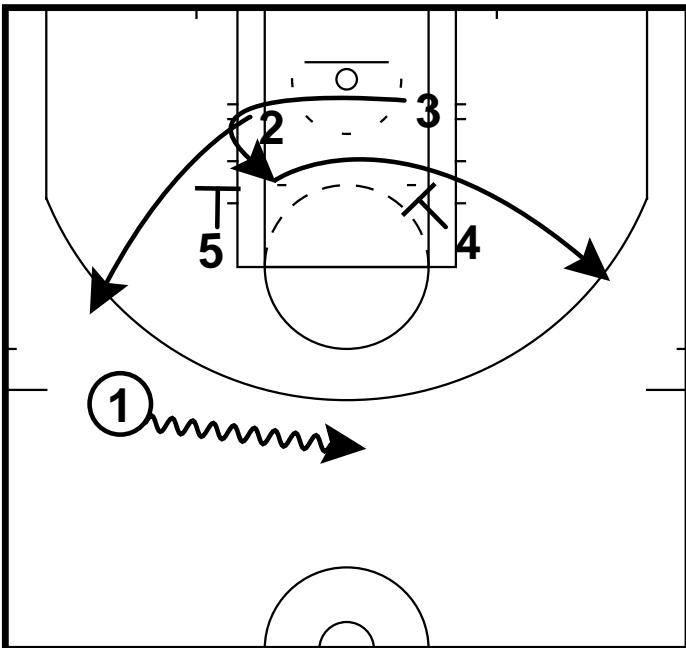
Fist Wrap Single  
Fist



Fist Wrap Single  
Fist

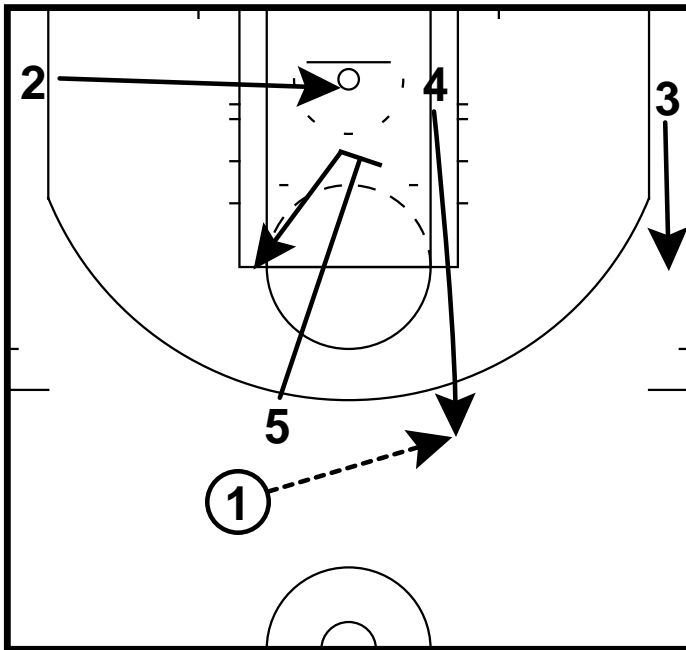


Fist Wrap Single  
Fist

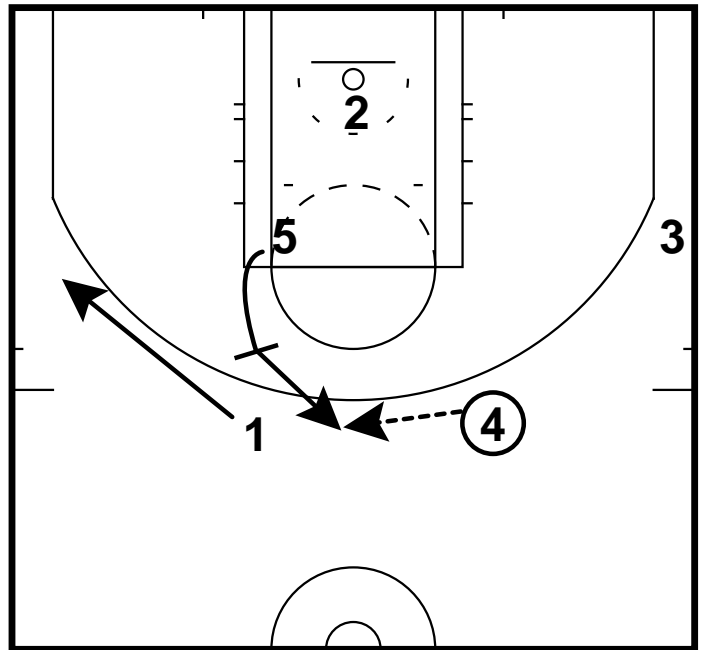


# Ram

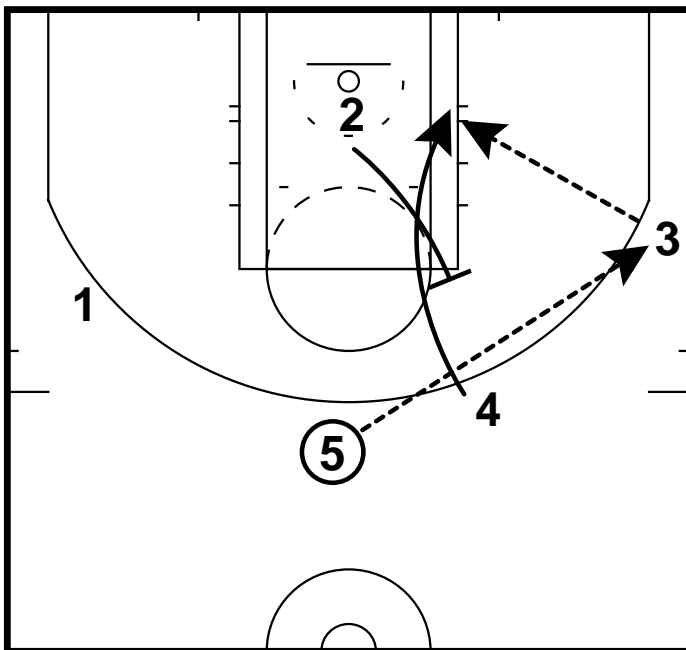
Ram Back Diagonal  
Ram



Ram Back Diagonal  
Ram



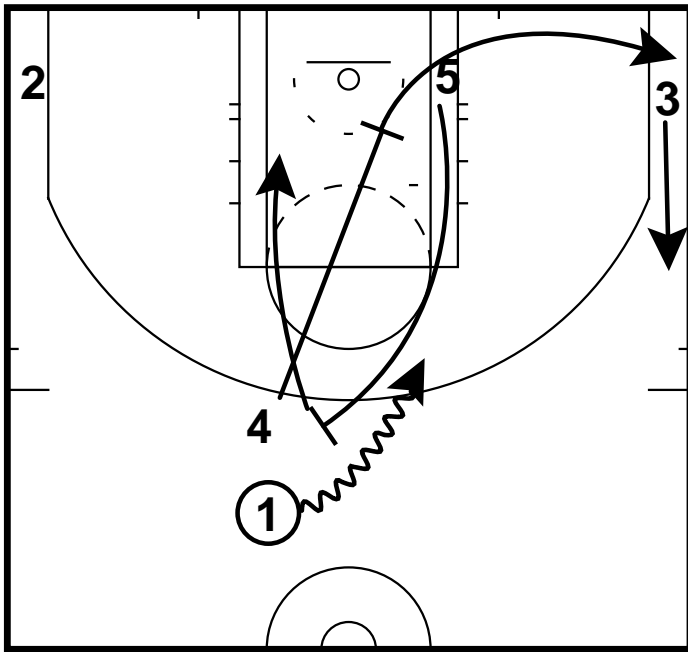
Ram Back Diagonal  
Ram





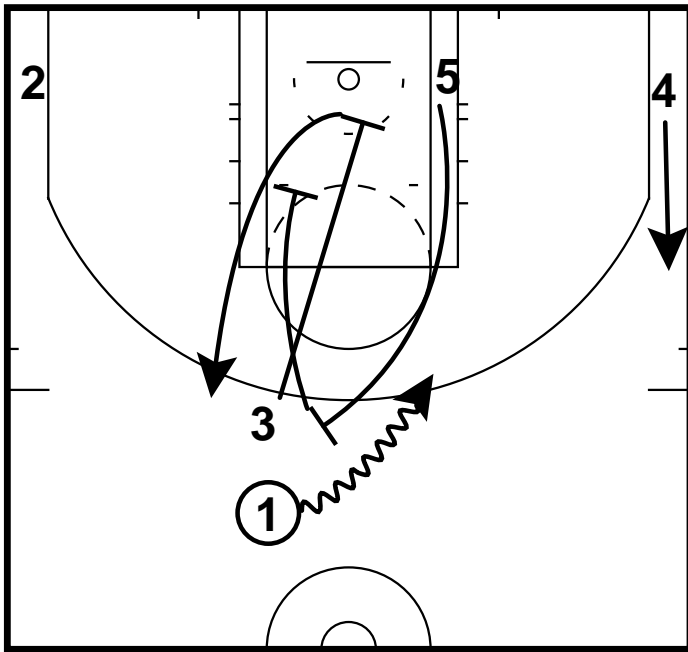
# Ram

Ram BS  
Ram



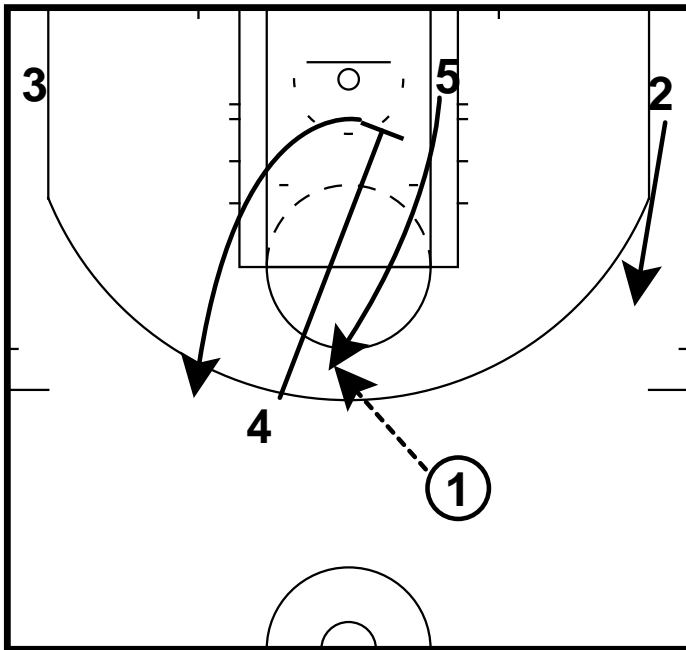
# Ram

Ram BS Down  
Ram

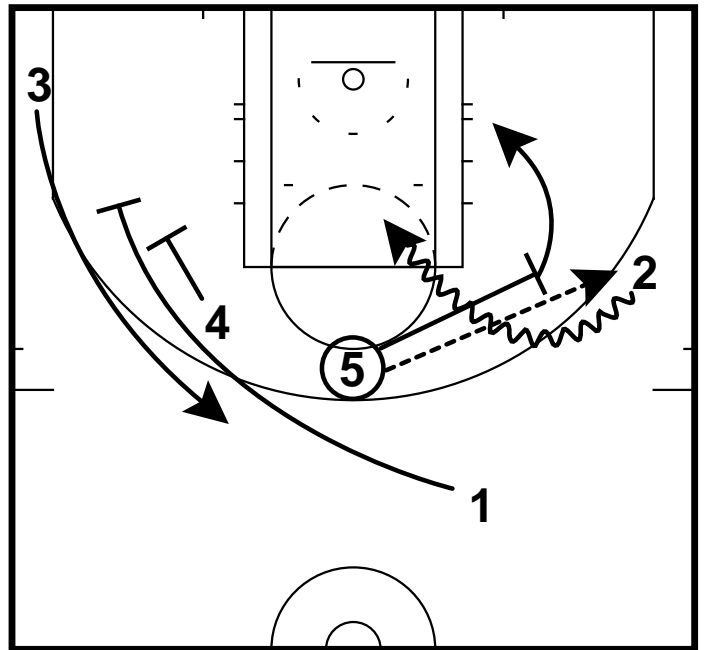


# Ram

Ram BS Stagger  
Ram

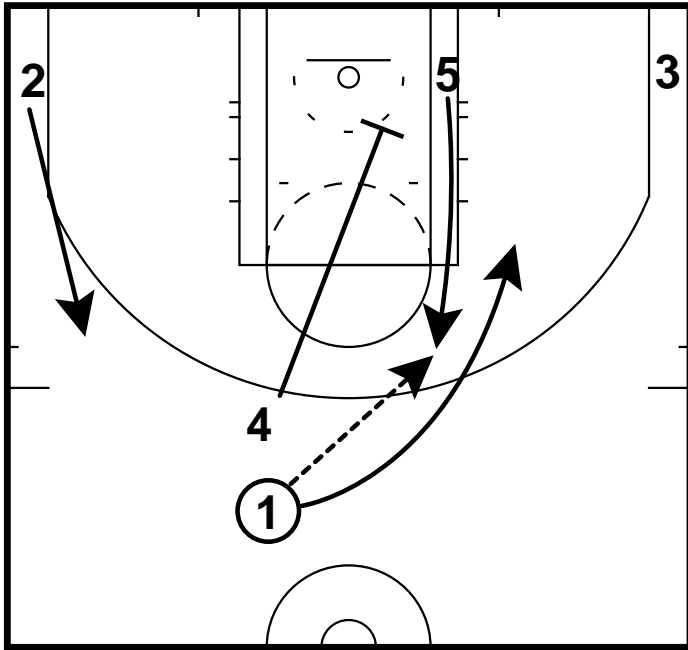


Ram BS Stagger  
Ram

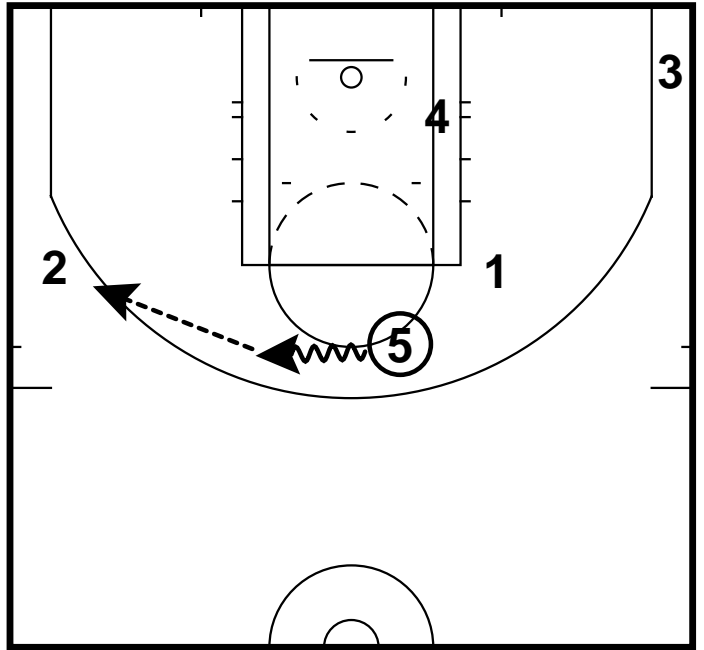


# Ram

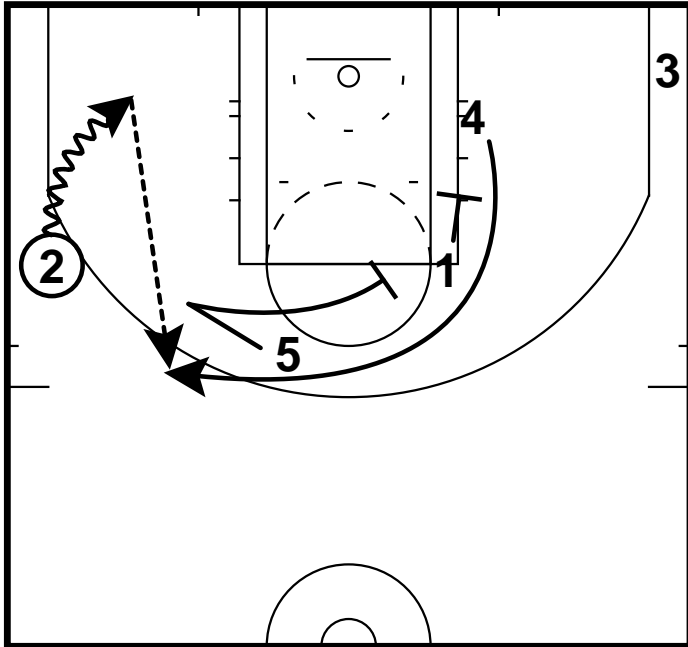
Ram Double Comeback  
Ram



Ram Double Comeback  
Ram

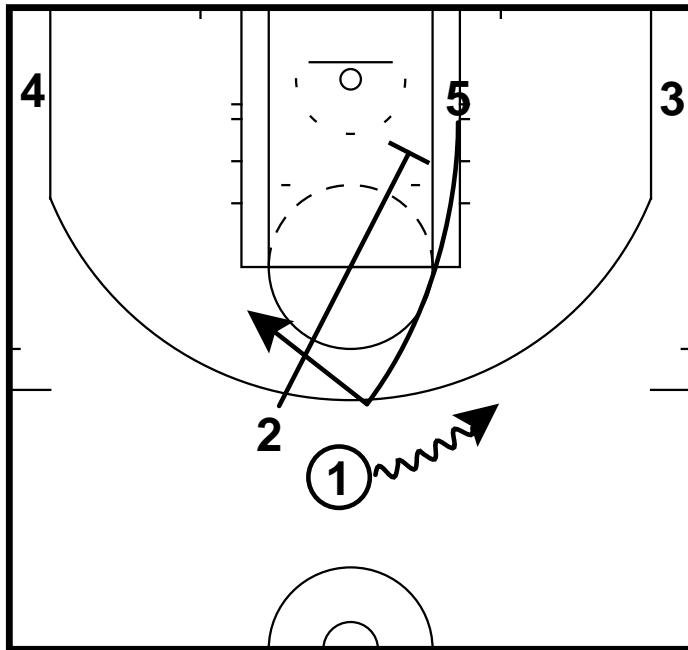


Ram Double Comeback  
Ram

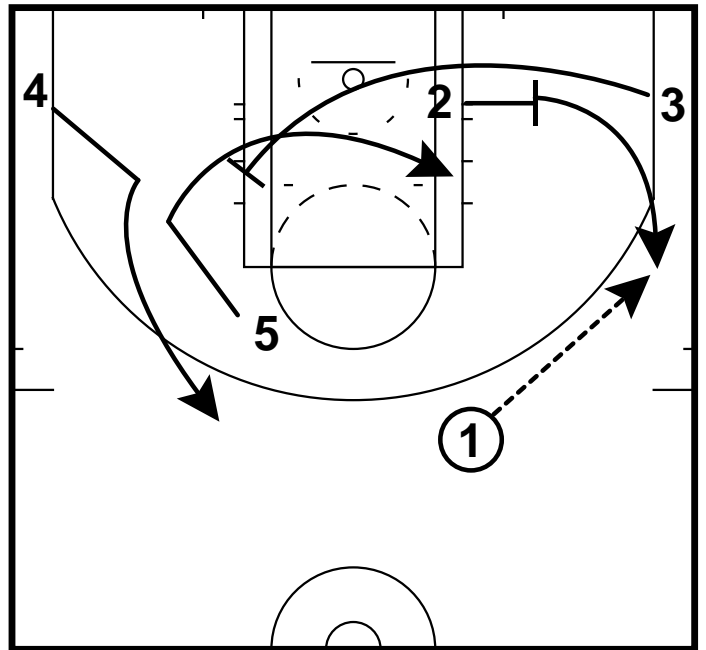


# Ram

Ram Down Diagonal  
Ram

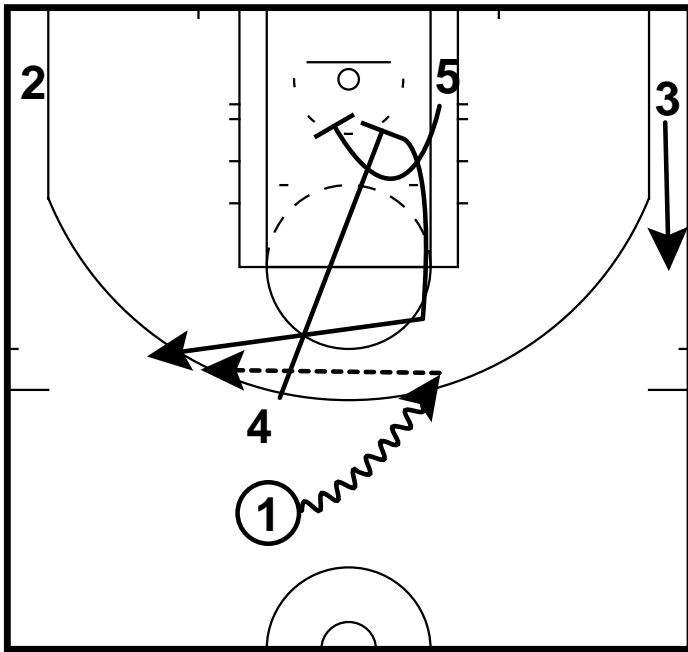


Ram Down Diagonal  
Ram

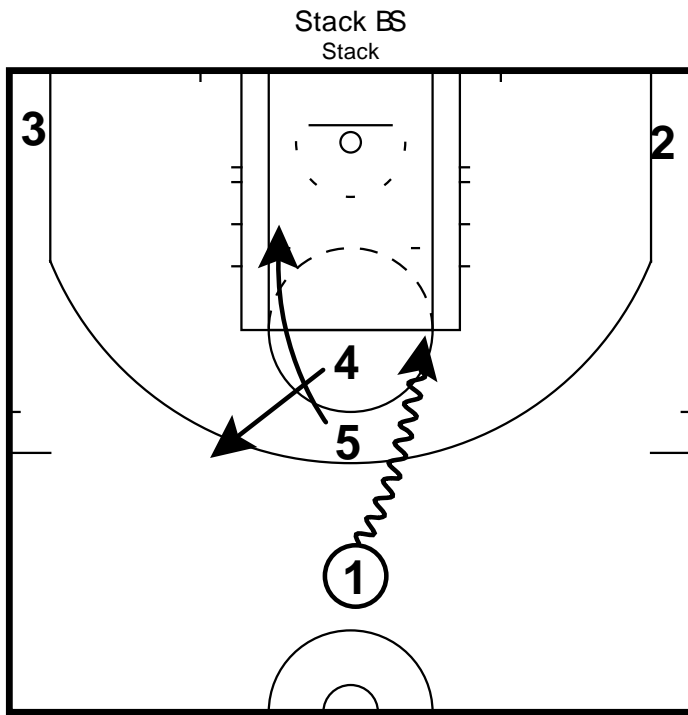


# Ram

Ram Wrap Slip  
Ram

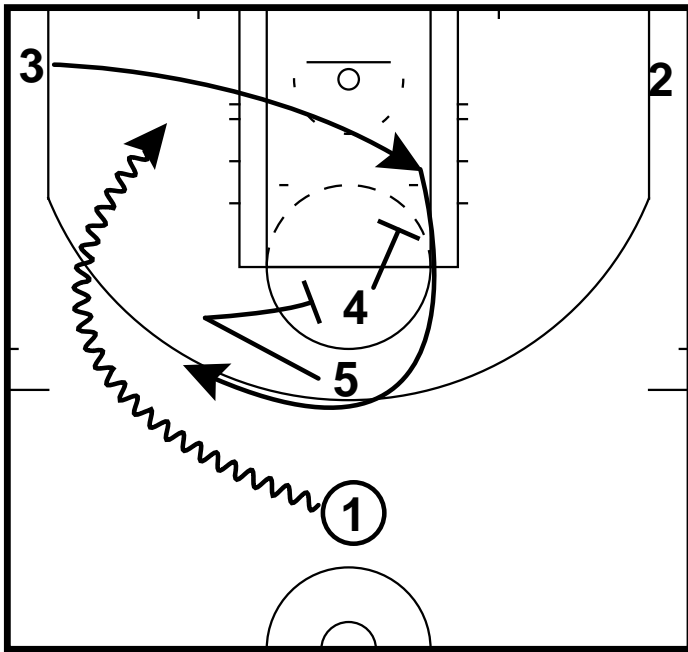


# Stack



# Stack

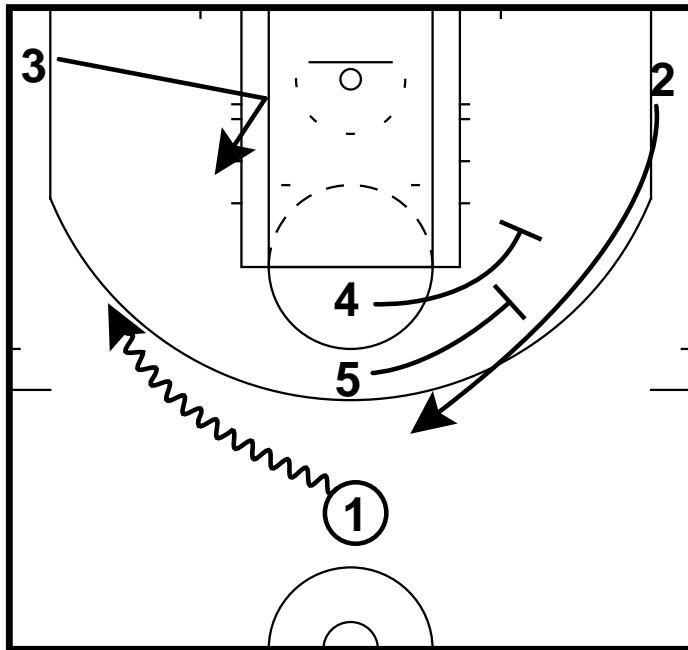
Stack Double Comeback  
Stack



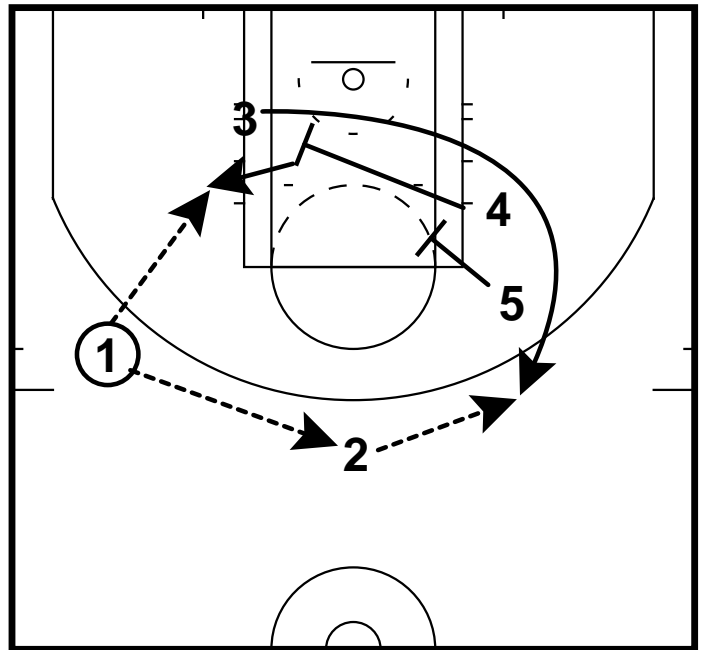


# Stack

Stack Double Double Post  
Stack

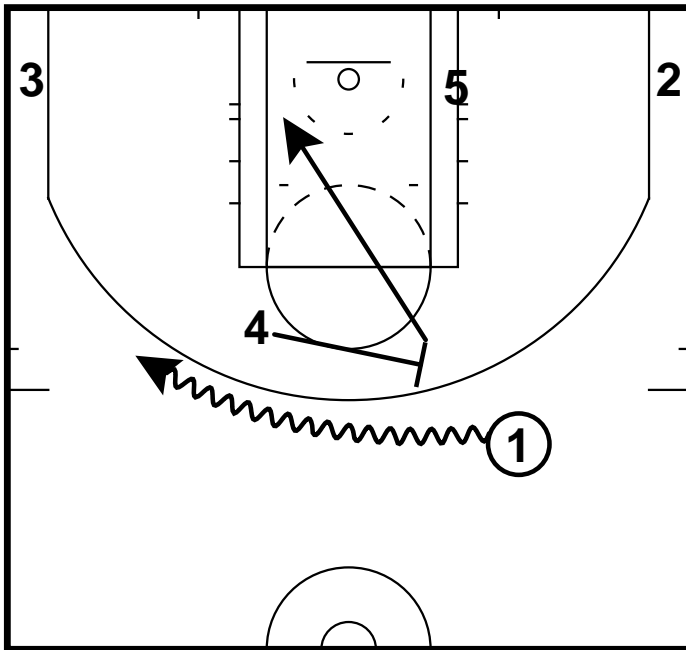


Stack Double Double Post  
Stack

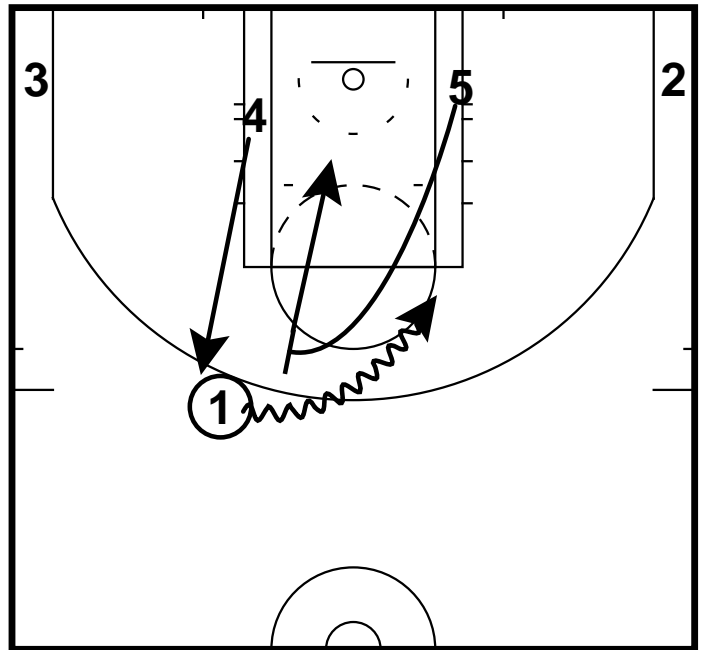


# Ball Screen

BS Rescreen  
Ball Screen

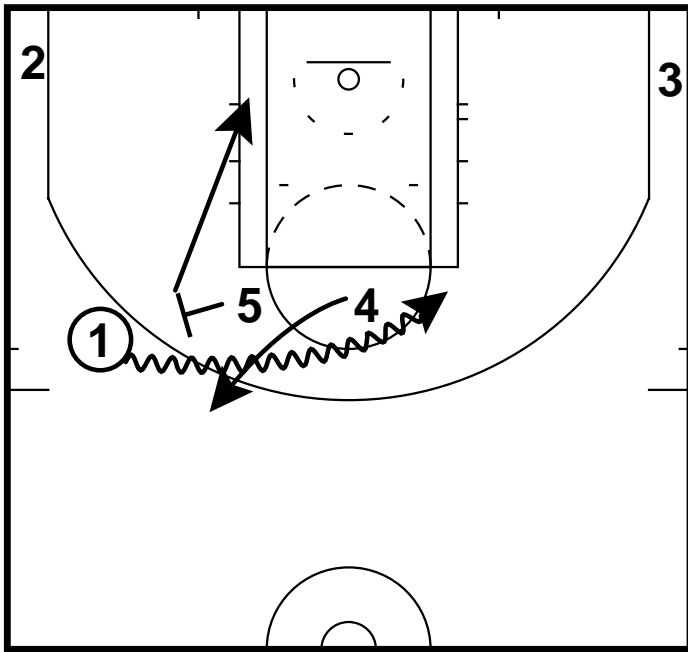


BS Rescreen  
Ball Screen



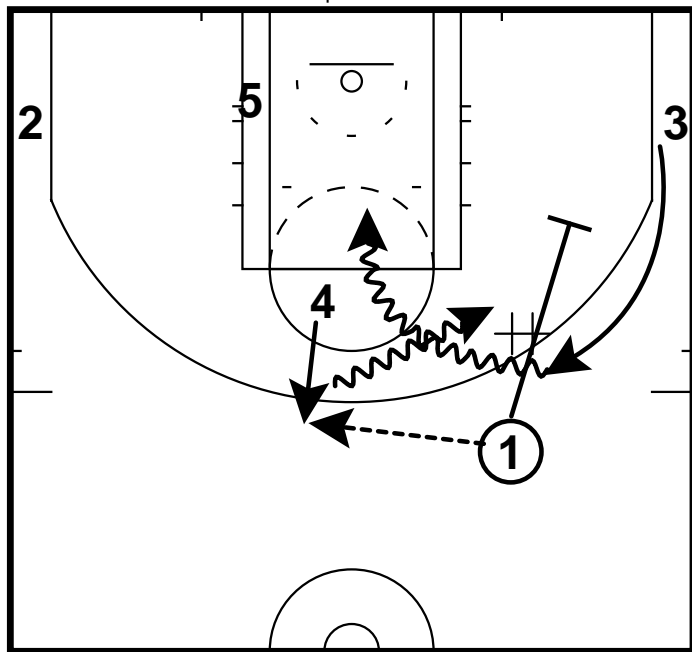
# Ball Screen

Double BS  
Ball Screen



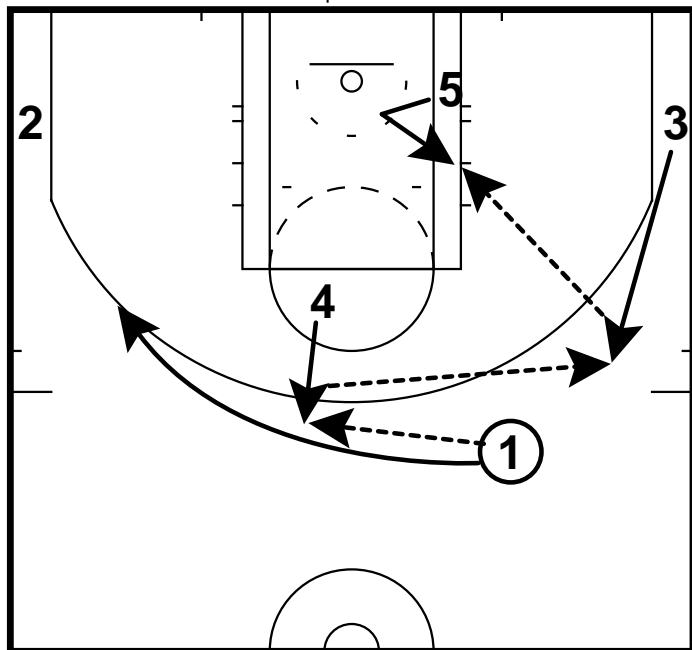
# Top Catch

Top Down Handoff  
Top Catch



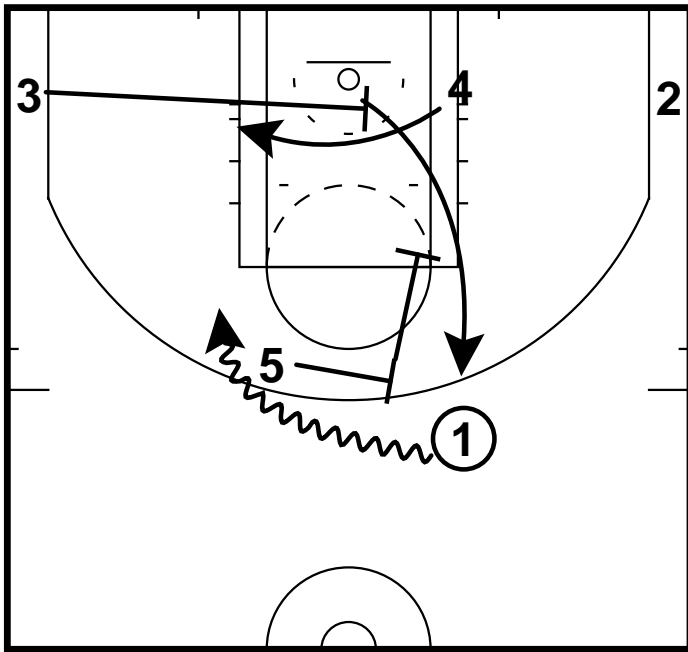
# Top Catch

Top Swing Post  
Top Catch



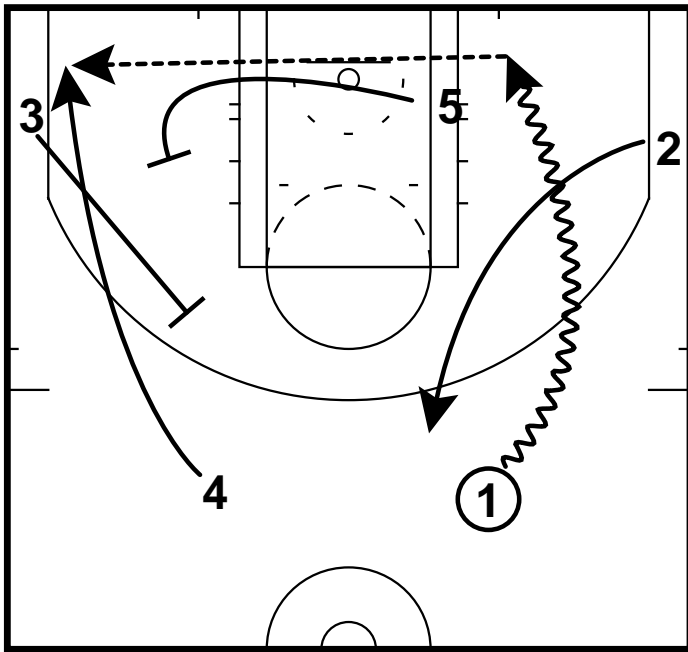
# Misc

Cross Down  
Misc



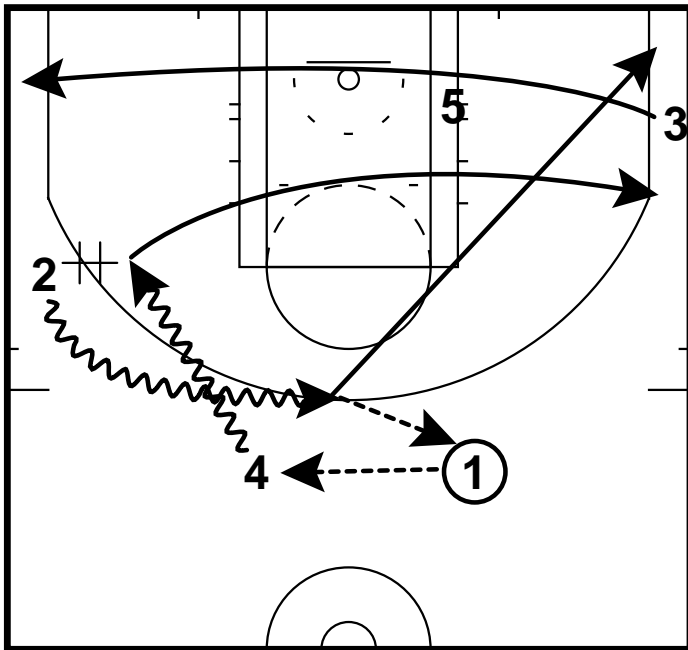
# Hammer

Hammer Double  
Hammer

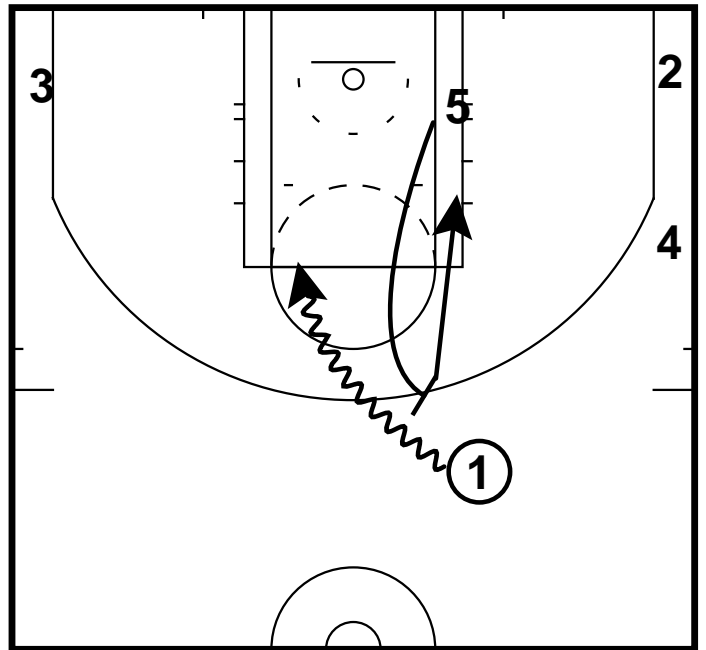


# Weave

Weave BS  
Weave



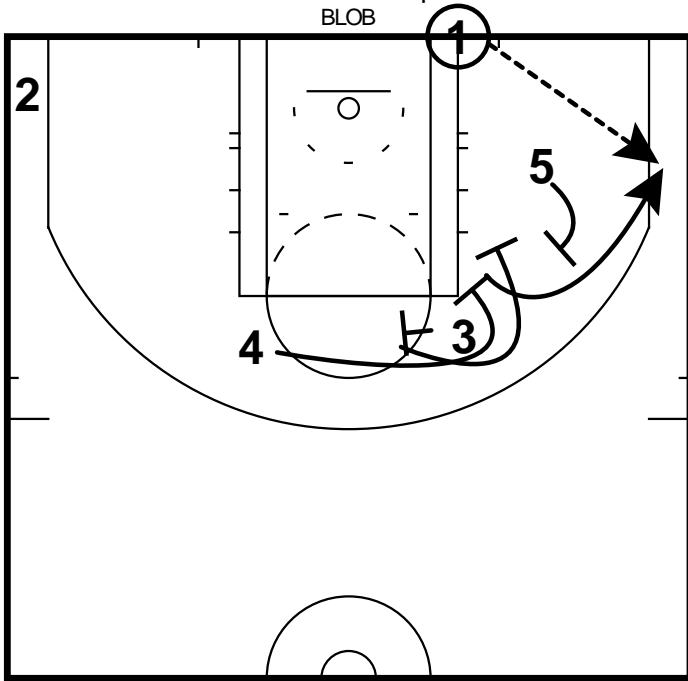
Weave BS  
Weave



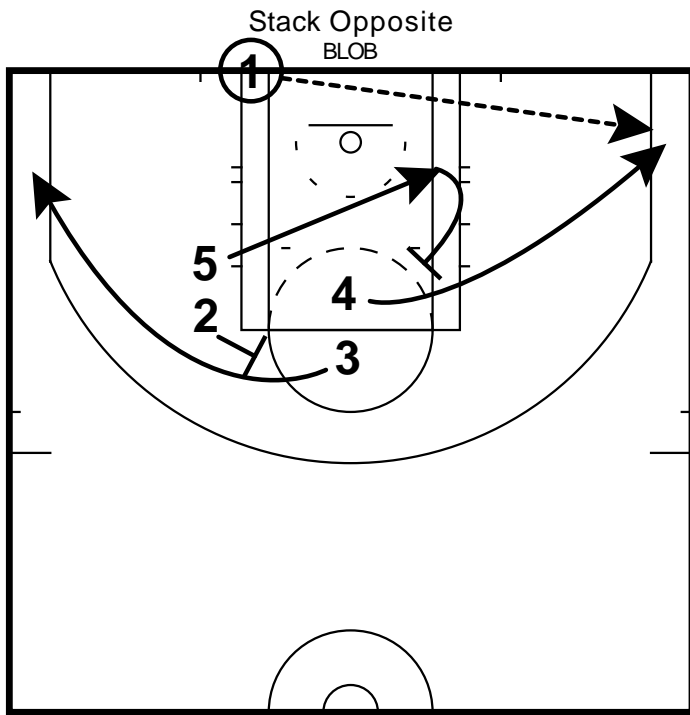


# BLOB

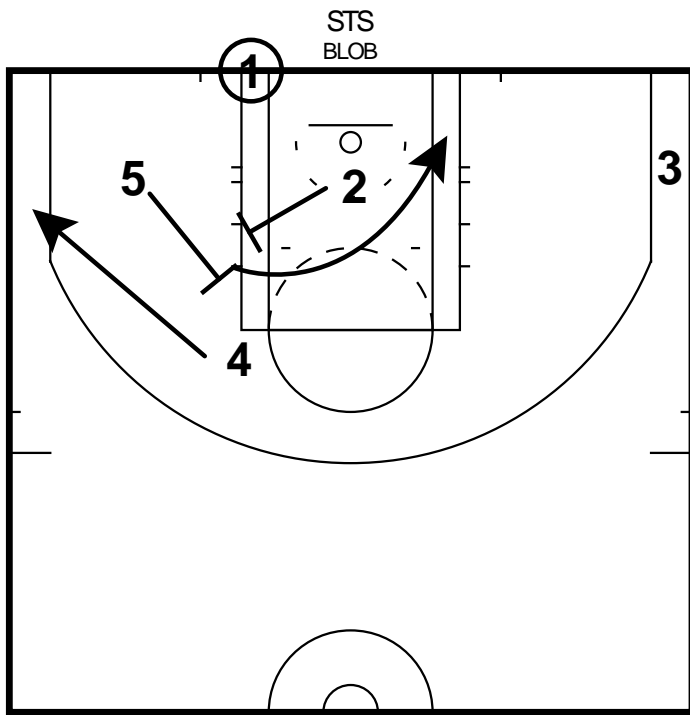
Double Wrap  
BLOB



# BLOB

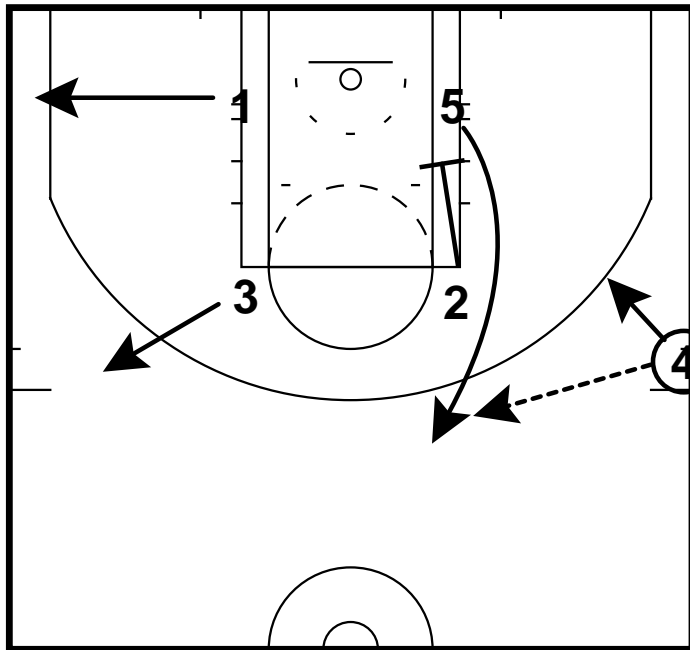


# BLOB

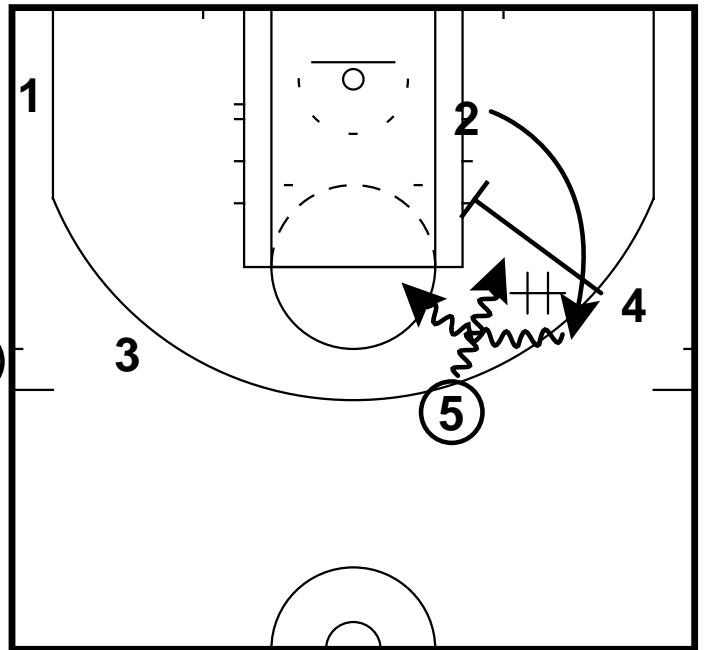


# SLOB

Down Handoff  
SLOB

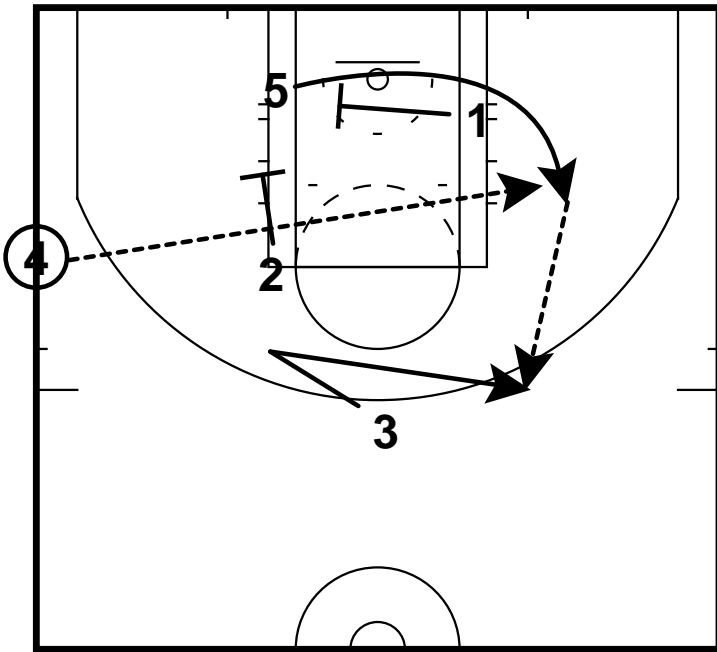


Down Handoff  
SLOB



# SLOB

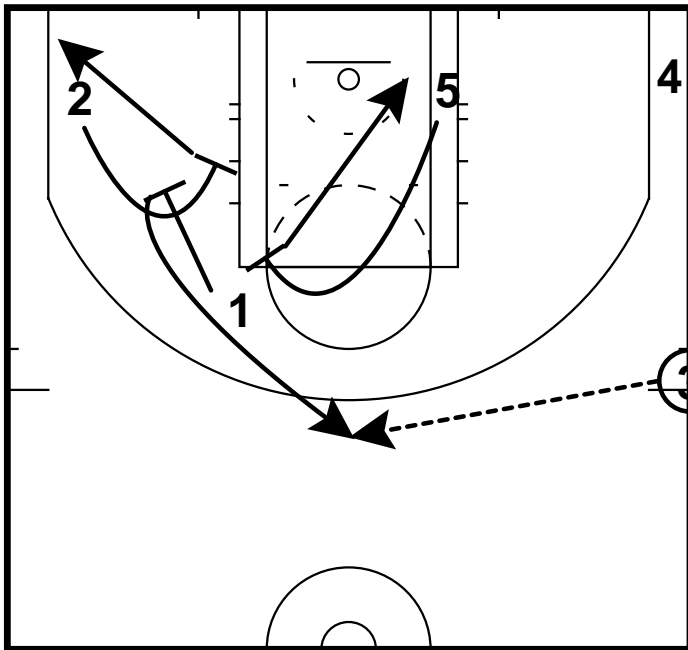
Lob 3  
SLOB





# SLOB

Slip BS  
SLOB



Slip BS  
SLOB

