

THE ART OF

DESIGN

LUXURY HOME INTERIORS

£4.95 • ISSUE 65



A ROYAL CENTRAL APARTMENT IN IRELAND /
2024 INTERIOR DESIGN TRENDS /
DESIGNING A LUXURY BATHROOM



For explore more, lets meet at our **London Showroom!**

📍 584 Kings Road, London SW6 2DX

🌐 maxxmora.com 📷 [maxxmoraglobal](https://www.instagram.com/maxxmoraglobal)

Istanbul | London | Hamburg | Cannes

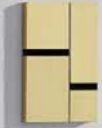
Every Outdoor Moment...



MAXXMORA
Outdoor Living Concept

basalte

design for your intelligent home



At the slightest touch the room dims to the right scene. Your favourite music starts playing, the temperature rises and the curtains open. The ultimate home feeling. Control everything with your design products in premium finishes like brushed brass and bronze, who complement each other and your interior design.

basalte.be

READY TO GO?
SCAN ME





CONTENTS

20

TRANSFORM YOUR SPACE WITH PREMIUM CANVAS ART

Art should not simply hang on your walls – it is an extension of your soul and offers an oasis of inspiration to your aesthetic.

32

MAGNIFICENT BEACHFRONT APARTMENT IN THE PHILIPPINES

This unique design shows the ultimate home project where comfort, simplicity, and elegance prevail.

68

2024 INTERIOR DESIGN TRENDS

The UK's leading experts in premium natural stone and porcelain tiles, share their 2024 key interior design trends.

78

CONTEMPORARY MEETS TRADITIONAL

A warm and welcoming home, this Victorian property located in South London underwent a major transformation.

Editor in Chief

Antony Holter
T: 01304 806039
E: editor@mhmagazine.co.uk

Sales Director

Courtney Yorke
T: 01227 936976
E: courtney@theartofdesignmagazine.com

Studio Designer

Sarah Johnson
E: sarah.johnson@mhmagazine.co.uk

Editor

Rebecca Keating
T: 01304 806039
E: rebecca@theartofdesignmagazine.com

Digital Manager

Jamie Bullock
T: 01227 936971
E: jamie@mhmagazine.co.uk

Accounts Department

Alison Holmes
T: 01304 806039
E: accounts@mhmediaglobal.com

Publishing Director

Martin Holmes
T: 01304 806039
E: martin@mhmagazine.co.uk

Business Manager

Josh Holmes
T: 01304 806039
E: josh@mhmagazine.co.uk

MH Media Global Ltd

18/20 Newington Road
Ramsgate
Kent CT12 6EE



Cover Image Courtesy of:
Delightfull - www.delightfull.eu



The Art of Design
is proud partners with



We designed this interior for a young couple. They wanted to have an apartment full of industrial elements and materials. It was also essential for them to have two workplaces and beautiful showcases for their memorabilia and collections.

LOFT-STYLE APARTMENT FOR A COUPLE WITH A CAT IN MOSCOW

We designed a contemporary interior with loft-style details so that even a kitchen set looks like an industrial object. The clients like to host the guests, so we left a kitchen and a living room united.

We applied not ordinary finish to the kitchen so it did not stand out from the brutalist interior. We made the facades of column cabinets and lower modules of MDF with metalized matte enamel. We finished the upper modules with American walnut veneer that has an active texture nicely contrasting with the metal. We did not extend the upper modules to the ceiling to visually lighten the kitchen; they form a narrow strip.





The supply ventilation air ducts remained visible because of this approach, and we chose black tin pipes. Such a ceiling significantly worsens sound insulation, but this apartment is located on the top floor, so there will be no noise from neighbors. We also pointed some lamps at the ceiling; they highlight its texture and illuminate the interior with reflected light.

Brass retro valves on cast iron radiators are one more element in the factory-like aesthetics.

We chose dark porcelain stoneware and decorative brick for the wall in the living room colored as the sofa upholstery and décor.

We placed a double-sided wardrobe instead of a partition that divided a living room and a corridor left by

The wall along which the tabletop is located became longer after the redevelopment. But thanks to the layout, only the monolithic wall of column cabinet is visible from the living room, and the large countertop is not noticeable.

We placed a wardrobe for rarely used items and an armchair with a coffee table on the balcony so that the homeowners could relax and enjoy the city view.

The ceiling most strongly references the industrial-like design: as the clients asked, we left the ceiling panel open and did not change its anthropogenic texture in any way.





a developer. Since this apartment doesn't have room for a separate walk-in closet, we designed several large closets.

To prevent the closet from looking like a blank wall from the side of the living room, we decorated its central modules with ribbed panels, and we made showcases with ribbed glass and built-in lighting on the left and right sides.

Behind the closet in the living room, there is a utility closet containing a washing machine and dryer. To the left, there is the door to the bathroom with a passage for the cat.

One can access the bedroom from the living room. The doors leading there are painted in the same color as the walls on one side, and completely mirrored on the other.

We organized two workspaces in the bedroom; the first is located at the entrance. There is a hanging table with drawers and cabinets for storing documents and clothes. We placed the table here so that

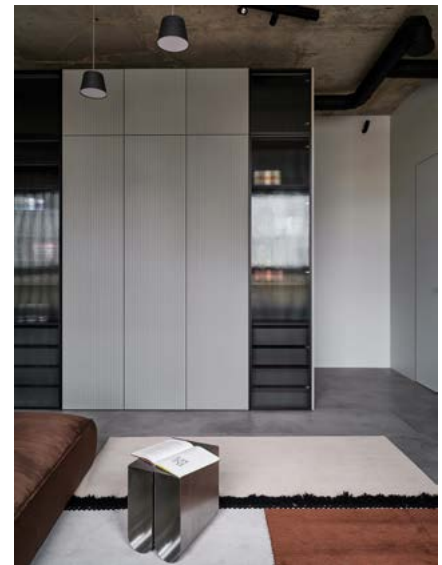
there is plenty of room next to it for movement in the VR helmet.

The second workplace is located at the corner window overlooking the city. Next to the table, there are open shelves and a showcase for the client's memorabilia.

We designed and manufactured a bed, which we placed in the center of the room; its frame is a single unit with cabinets and wall panels. We made the bed's base in black and deepened it with the sides veneered with American walnut. This way, the bed seems floating. We supplemented the wall panels above the headboard with wood strips and complemented them with lamps that rhythmically hang from the ceiling.

We installed a mirrored cabinet with sockets and a hanging cabinet with a sink, under which there will be a litter tray for the cat in the bathroom. We chose an unusual porcelain tile decorating the bathroom that imitates the texture of metal sheets and rust.

One can access the guest bathroom from the hallway. We enlarged the guest bathroom at the expense of the corridor. We were able to add a shower after the replanning; and now it's separated by a ribbed partition, which unusually refracts the illumination of the niche for gels and shampoos.





NEPTUNE

TRADE

Working with fellow professionals

Furniture Accessories Lighting Paint Kitchens Design services
neptune.com

BRITISH DESIGNED LUXURY FURNITURE AT AFFORDABLE PRICES

My Furniture have perfected the neutral trend this season. Their organic, curved silhouettes inspired by nature will add flow, movement and balance to any interior. With subtle metal accents providing the necessary glamour completing the look.

Embrace a neutral palette of ivories, chinks and taupe - think boucle and Borg textures to create a calm, cosy, relaxing atmosphere.

With an extensive knowledge of interiors and a forward-thinking approach, My Furniture are constantly creating fresh and original designs. An increasing number of design professionals are favouring this dependable and affordable furniture provider; including architects, interior designers and property developers.

Early 2020 saw My Furniture substantially extend their warehouse and showroom, resulting in increased stock availability and further streamlining the ordering process for the customer. With over 12,000 Trust Pilot reviews and consistent 5-star ratings, customers can buy in confidence.

Designing in-house in the UK enables this luxury interiors brand to do what they do best - offer unique luxury pieces at affordable prices. Equipped with an in-house upholstery team, it allows them the flexibility to provide bespoke fabric options to suit their customers' specific needs.



My Furniture regularly add new collections to their portfolio. Whether your preference is hotel luxe or simple elegance, you will undoubtedly find the perfect piece that can be in your home in as little as a couple of days.

New to their collection this season, is the Ozman lounge chair. A beautiful piece with both chalk and mink velvet making up this striking chair. Their popular Lexington range now has the addition of a sideboard to the collection - available in both black and pebble grey. A stunning piece of furniture with reeded detailing to the door fronts.

Also available from their showroom in Nottingham and online are a wide range of products, from bedroom and dining furniture to beautiful lighting and accessories. Alternatively, all products can be viewed via a video call facility with a member of the sales team.

My Furniture are passionate about providing excellent customer service and offering luxury items at affordable prices. Authentic, reliable and honest with FAST AND FREE DELIVERY TO UK MAINLAND. Delivery available throughout Europe.



Discover luxury furniture and a wealth of home décor inspiration, visit: [my-furniture.com](https://www.my-furniture.com) or call freephone **0800 092 1636**.



AFFORDABLE LUXURY

my-furniture.com

enquiries: 0800 092 1636

FROM HOMEMADE BASKETS TO TIMELESS FURNITURE

The Renoir Swing designed by Ankjær Andreasen in 1956 is still found in Sika-Designs collection.



In Sika-Designs collections you find furniture designed by some of the greatest architects of our time such as Arne Jacobsen, Nanna Ditzel and Franco Albini & Franca Helg.



It all began in 1942 with a production of smaller wicker products such as baskets.

Sika-Design was established in 1942 by Danish entrepreneur Ankjær Andreasen who, during the second world war, started a production of smaller wicker products made by home basket makers in Jutland, Denmark.

Today Sika-Design is one of the oldest manufacturers of rattan furniture in the world, and with 3rd generation in charge, the company is still run with the same family passion for wicker furniture.

In the 1950s, Sika-Design expanded the production to also include wicker furniture. Today you can still find some of the original designs in the product range such as the

Renoir hanging chair designed by Ankjær Andreasen in 1956. Up until 2003, Sika-Design solely manufactured rattan furniture but in 2003 the company introduced their very first outdoor wicker collection made in aluminum and the groundbreaking material ArtFibre.

Today, Sika-Design presents wicker furniture for both indoor and outdoor. These are designed across the 3 generations of the family as well as by some of the greatest designers and architects of our

time. In the collections you find iconic pieces such as the Hanging Egg chair by Nanna Ditzel, the Paris lounge chair by Arne Jacobsen, and the Belladonna sofa by the Italian duo Franco Albini & Franca Helg.

Sika-Designs furniture is still handcrafted using the same traditional craftsmanship, and can be seen at high-end cafés and restaurants, luxury hotels, and wellness resorts all over the world.

www.sika-design.co.uk

Wicker Furniture

FOR INDOOR & OUTDOOR

Sika-Design have spent the past 80 years to perfect the art of wicker. Our collections are designed to live long and are therefore made in beautiful timeless designs and manufactured in strong maintenance-free materials. For indoor we use the extremely durable natural material rattan, and for our outdoor collection we use aluminum and ArtFibre®.

At Sika-Design we cherish to work together with architects, interior designers, hotels, and restaurants. To give our customers the best options while planning a project, we have 3D models, datasheets and high-resolution images of our full assortment available for download. Use the QR-code to access our Downloadcenter. A login is not required.



Custom cushions with Liberty Fabrics | Photo credit: Chris Everard

Belladonna Exterior Sofa & Ottoman Exterior
Design by Franco Albini & Franca Helg

VIEW OUR FULL COLLECTION AT WWW.SIKA-DESIGN.CO.UK



Photo credit: Jérôme Galland

Rossini Dining Chair at Le Perchoir, Porte de Versailles, Paris



MONET CHAIR & FOOTSTOOL
Design by af Sika-Design



PARIS EXTERIOR LOUNGE CHAIR
Design by Arne Jacobsen



MADELEINE DINING CHAIR
Design by Sika-Design



HANGING EGG EXTERIOR CHAIR
Design by Nanna Ditzel

GET YOUR HOME AUTUMN READY

As we make this seasonal shift are you often wondering how to add that extra layer of comfort to your home?

Perhaps you don't have a fireplace and are desperately trying to add that warm charm. Our designers have put together 7 quick and easy tips for creating the ultimate autumnal ambience for any home.

1. UPDATE CUSHION COVERS

This can be an effective and simple way to switch up your interior without huge cost implications. Try layering tactile cushions in earthy autumnal tones with soft chunky throws for a really cosy living space.

2. ADD PLENTY OF TEXTURE

Tactile fabrics are great for warmth. Accessorise your living space with soft blankets and throws. Use a wicker basket to keep them in, when not in use, for a lovely cosy aesthetic.

3. SWITCH UP FRESH FLOWERS FOR DRIED FOLIAGE

Preserved eucalyptus smells amazing and dried arrangements are extremely low maintenance.

4. BURN YOUR CANDLES!

Earthy and aromatic scents create an inviting autumnal feel. Remember the first burn is important to ensure you get the most out of your candles.





5. UPDATE YOUR TABLE DRESSING

Soften your dining table with a lovely neutral tablecloth. Layer the table with natural materials and organic shapes such as woven placemats, subtle asymmetrical crockery, and a splash of autumnal colour like rust.

6. ADD MORE LIGHTING

Lighting can really transform a space and help set a mood. Having lots of light sources in a room, including accent lighting creates a welcoming space. Using dimmable lights means you can play with light levels for the perfect atmosphere too.

7. INVEST IN YOUR OUTDOOR SPACE

Add new lighting, a heating source such as a fire pit, and lots of cosy blankets. It's easy to neglect your outdoor spaces in the colder months, but they can be used all year round. Think toasted marshmallows and outdoor movies with a cup of hot chocolate!



UNIQUE HOME FURNISHING MAKE FINDING **STYLISH HOMEWARE AND FURNITURE EFFORTLESS**

Your home is as unique as you are and we at Unique Home Furnishing believe your home should tell your story. The online store is passionate about finding stylish furniture, Soft furnishings, and home decor accessories as individual as you are and the look you are creating for your home.

Our In-home design consultancy service will help give you the inspiration and advice you need to create the unique home of your dreams, all from the comfort of your home. No job is too small for seeking our advice.

ELEVATE YOUR LIVING SPACE WITH TIMELESS ELEGANCE

Are you seeking a modern living room that also exudes timeless elegance? Look no further! Our contemporary designer furniture and accessories will transform your space into a luxurious haven. With our 3D rendered visualization, envision yourself relaxing in style surrounded by the highest quality



materials. From sleek sofas to exquisite dining sets, we have everything you need to create the perfect ambiance for entertaining or simply unwinding after a long day. Don't miss out on this opportunity to elevate your living space.

ADD SOME FLAIR TO YOUR HOME WITH OUR UNIQUE HOME DECOR

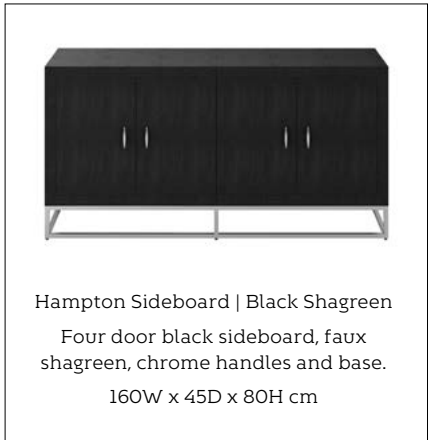
When it comes to decorating your home, you have plenty of choices available to you; you can go big or small, modern or retro. But the one thing that's often hard to come by is truly unique furniture and decorations; if you want something different from the rest of your neighbours and friends, how do you find it? Fortunately, we at Unique Home Furnishing have an answer for you with our selection of high-quality and beautifully designed unique designer modern and retro furniture and decor items including decorative lighting, mirrors and more.



Cream console table, faux shagreen tray top, walnut base with brass detailing, tray removable.
140W x 40D x 76H cm



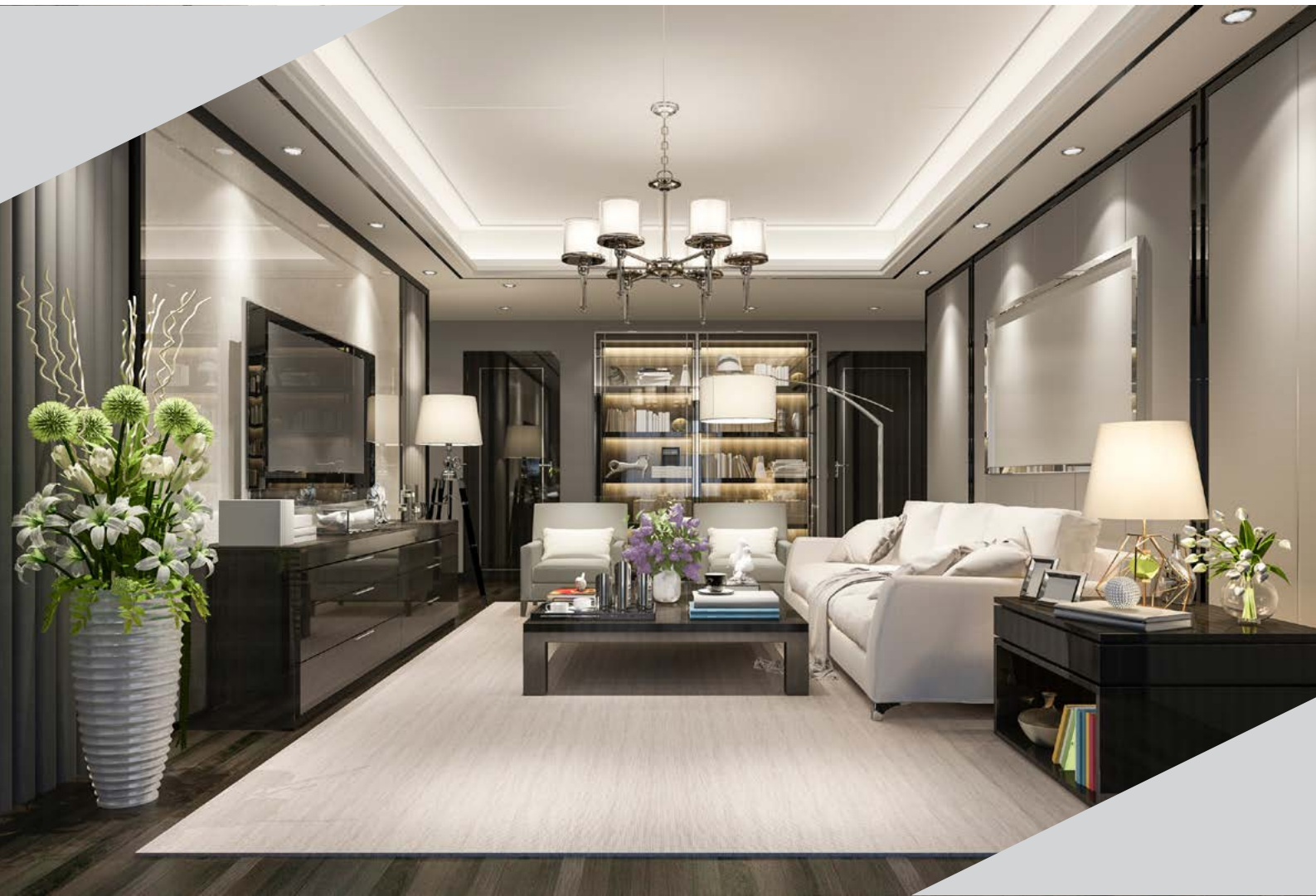
The Astor nightstand midnight oak is an exciting addition to one of our original collections.
Size 60 x 43 x 60cm high



Hampton Sideboard | Black Shagreen
Four door black sideboard, faux shagreen, chrome handles and base.
160W x 45D x 80H cm

UNIQUEHOMEFURNISHING

Elevate Your Space with Timeless Elegance!



Remember, when it comes to furnishing your home, settle for nothing less than uniQue.

Elevate your space with timeless elegance and create an environment that you'll love coming home to. uniQue Home Furnishing, where style meets sophistication.

www.uniquehomefurnishing.co.uk

Email: info@uniquehomefurnishing.co.uk

DELCOR - THE FINEST FURNITURE HAND CRAFTED IN NORTHUMBERLAND



Do you remember what you were doing in 1978?

Grease was the must-see film that year.

The Ford Cortina was the UK's best-selling car.

Kate Bush was in the charts with Wuthering Heights.

In Spring, 1978, Alison from Whitley Bay visited the Delcor showroom in Newcastle to buy her first sofa. She recalls "We were impressed by the design, the comfort and the fact the furniture was made for you"

Looking back this time, Alison said "My husband Andy and I had trawled round all the shops in Newcastle. Up until then we had made do with hand me downs and secondhand furniture. We didn't believe in buying cheap items - we saved up (as you did in those days) and then bought something we thought would last."



Here in Northumberland, Delcor has been creating handmade upholstered furniture - sofas of distinction - to our customers' individual specifications since 1967.

One of our early marketing lines described us as "the manufacturer who sells direct to the customer."

We soon became well known throughout the Northeast. Later, through other showrooms in the UK, Delcor solidified its reputation as a high-quality specialist manufacturer and retailer of the very best furniture.

Alison recalls choosing the sofa and a matching chair, and then waiting for them to be made whilst her lounge was decorated. She then had her first child in 1981 and moved to a larger home. She loved the sofa and chair she had but wanted to enlarge the set, so they returned to Delcor to purchase another chair.

We have always offered a refurbishment service for older Delcor furniture. People come back to us to have their well-loved Delcor furniture fully restored.

Alison reflected "The suite lasted very well, in 2020 my husband died, Covid came, and life stopped. At the beginning of this year, I decided to redecorate, I realized my wonderful Delcor settee was really looking like it needed renewing as the fabric was starting to show its age (mainly because my Grandchildren had been using it as a trampoline!)"

"I must admit I won't need my new sofa bed to last another 45 years but now I'll have a fantastic piece of furniture to leave to my children knowing it will give many years of good service."

"I was so well received during my visit. I felt like I'd come 'home'. I knew your products were excellent and really didn't need any persuasion to think about buying from you again.

Visit our showrooms in Seaton Delaval, Stamford, London, Altrincham or Witney.

Alison said "You made me feel I was an important and valued customer.

"Would I recommend Delcor? A resounding yes!"

Chris Hopkins, Delcor Brand Manager.



www.delcor.co.uk

Delcor

SINCE 1967

The finest upholstered furniture



Enquire about our special pricing for interior designers.

www.delcor.co.uk

MADE IN BRITAIN  **50** year guarantee | Find us on:    

Visit your local showroom, for more information about our products, and retail enquiries please contact sales@delcor.co.uk or call 0191 237 1303

* Ask in store for T's&C's



Art should not simply hang on your walls - it is an extension of your soul and offers an oasis of inspiration to your aesthetic.

TRANSFORM YOUR SPACE WITH PREMIUM CANVAS ART **BY AUREOUS.CO**

At Aureous.co, we've got the perfect collection to decorate the blank canvas called your home.

The Aureous Canvas Wall Art Collection is now available for those who want to adorn their walls with

something extra special.

Our popular cloud series looks even more delicious - we especially love our Contemplating square canvas print, which captures the tranquility and whimsy of Aureous.

co's best-selling design with the prestige of a canvas backdrop.

Set against a serene beige or sage background, our trademark fluffy, playful cloud gently floats towards the top of the frame.



This artwork is designed to inspire reflection and wonder, making it the perfect addition to any living space.

The best news is - there are lots of other irresistible designs to choose from. Whether you're a minimalist or crave something that makes your wall pop, our canvas collection is your next art obsession.



Each canvas in this collection features a 38mm stretched canvas within a traditional wooden picture frame, offering a level of quality and distinction that goes beyond typical print-on-demand canvases.

07930538887 | aureous.co

BESPOKE KITCHENS HANDMADE TO YOUR EXACT SPECIFICATION



Traditionally jointed solid wood kitchens at sensible prices. A proper kitchen, properly made and designed to fit your space and budget perfectly.

Free Design Service

We have a unique approach to our design service, in the same way that our furniture is hand made so are our designs.

Construction & Materials

Extensive use of Quebec yellow pine and the highest standard of selected kiln dried panels ensures product stability.

Finishes

You can order our hand made wooden kitchen, bedroom and other furniture in one of 5 finishes.

THE PRICE

As a rough guide, an average Fine Sanded Pineland kitchen costs £8,000 (delivered incl. VAT). Allow around £1,500 for worktops/taps/sink and tiles and this means you can effectively install a solid wood traditional farmhouse kitchen for less than £9,500. All our units are supplied fully assembled, checked for quality and identified, vastly reducing fitting time and costs.



Pineland Furniture is a family owned business and was established in 1987 by Edward Taylor and his son Richard.

We have two branches which are located fairly centrally in the UK. You'll find our main outlet in the picturesque market town of Cleobury Mortimer in Shropshire and our second branch in the old salt town of Northwich in Cheshire. Both of these premises are manufacturing centres with comprehensive showrooms.

WHAT WE DO

We mainly design and manufacture bespoke high quality kitchens however we also make freestanding and built in furniture for bedrooms, living rooms etc.

Kitchens

All our kitchens are bespoke and built to the exact size and shape to fit the shape of your room perfectly.



pineland.co.uk | enquiries@pineland.co.uk



Pineland

Elegance & beauty at a reasonable cost

- 100% solid wood kitchens – no MDF, chipboard or ply
- Dovetail jointed drawers – mortise and tenon joints for carcasses
- Free design service, individual hand drawn plans
- Non-standard sizes, at no extra cost, to suit your kitchen dimensions
- Fully assembled units; no annoying flat-pack assembly
- Straightforward, easy to understand costing – prices include VAT & delivery
- Primed, or primed and painted units can now be provided



www.pineland.co.uk

enquiries@pineland.co.uk

Cleobury Mortimer – Shropshire **01299 271143**

Northwich – Cheshire **01606 41292**



CHARLIE SMALLBONE INTRODUCES **THE STUNNING MALTA PENTHOUSE PROJECT**

Ledbury Studio has reached new heights with its latest project - all the way to the 15th floor, to be precise.

This stylish contemporary penthouse, located in Malta, boasts breath-taking views over the island thanks to floor-to-ceiling glazing that opens onto three expansive outdoor terraces with sitting and dining areas. There's even room for a swimming pool!

Creating a kitchen and bar area that would perfectly complement this luxurious setting was no small undertaking - but Charlie Smallbone rose to the challenge! Here, he tells us how the design as a whole came together.



What was the brief for this project?

“The couple who own the apartment have grown-up children with families of their own, so they wanted it to be a space where they could all gather. When they acquired the property, it was an empty shell, giving them the freedom to design a fully open-plan space. In the resulting layout, spaces flow effortlessly into each other - from a comfortable living room, to a kitchen and dining area, and finally to a bar with additional seating. My brief was to design furniture that would contribute to that feeling of openness by creating linked but distinct areas where the family could socialise and enjoy everything from dinners to casual snacks and drinks.”

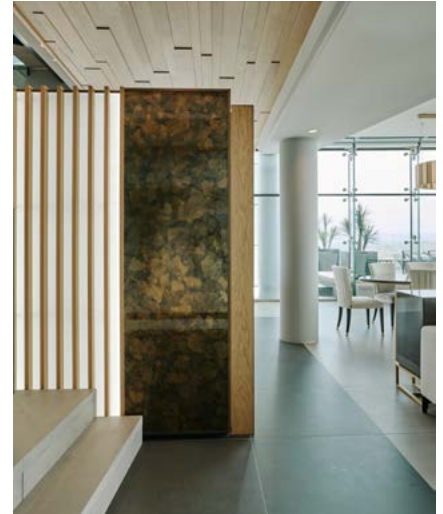
Were there any particular challenges with the kitchen?

“The kitchen comprises a generous island that serves as the centrepiece, backed by a single row of cupboards that provide space for storage, appliances and a breakfast cupboard. Our challenge was that the kitchen is located in



the middle of the space without any walls to work with. Therefore, all components had to be freestanding and are visible from every angle, including from above when walking up the stairs.

“To address this, we clad the backs in a mixture of beautiful materials that look good wherever you stand in the space. On the back of the breakfast cupboard is polished fluted stainless steel (above left). Meanwhile, the microwave section of the tall cupboard features a



screen made from wooden slats with backlit opaque glass slivers, and the fridge-freezer is backed in polished mica panels (above right).”

The island is a monumental piece, what was the thought process behind its design?

“Yes, the island is quite large - measuring almost 5 metres by 1.5 metres! But when you’re designing for a space of such huge proportions, with 10-metre-high ceilings, an average-sized island



would look all wrong. You have to work with the scale of the building to ensure the island is proportional. We then added to the drama with a waterfall worktop of Mont Blanc quartzite, which ‘flows’ over the end. On the front, we added eye-catching polished mica panels and a liquid metal kicker. All the materials on the island both look great and are easy to clean, making them practical choices that combine to create a truly show-stopping piece.”

How did you make this a functional as well as beautiful kitchen?

“The island’s size also means that we could accommodate many of the working elements of the kitchen

within it, as well as generous bar seating. It features a hob with integrated extraction, sink with Quooker boiling-water tap, plus a 900cm-wide built-under oven, a dishwasher and plenty of storage to keep the kitchen clutter free.

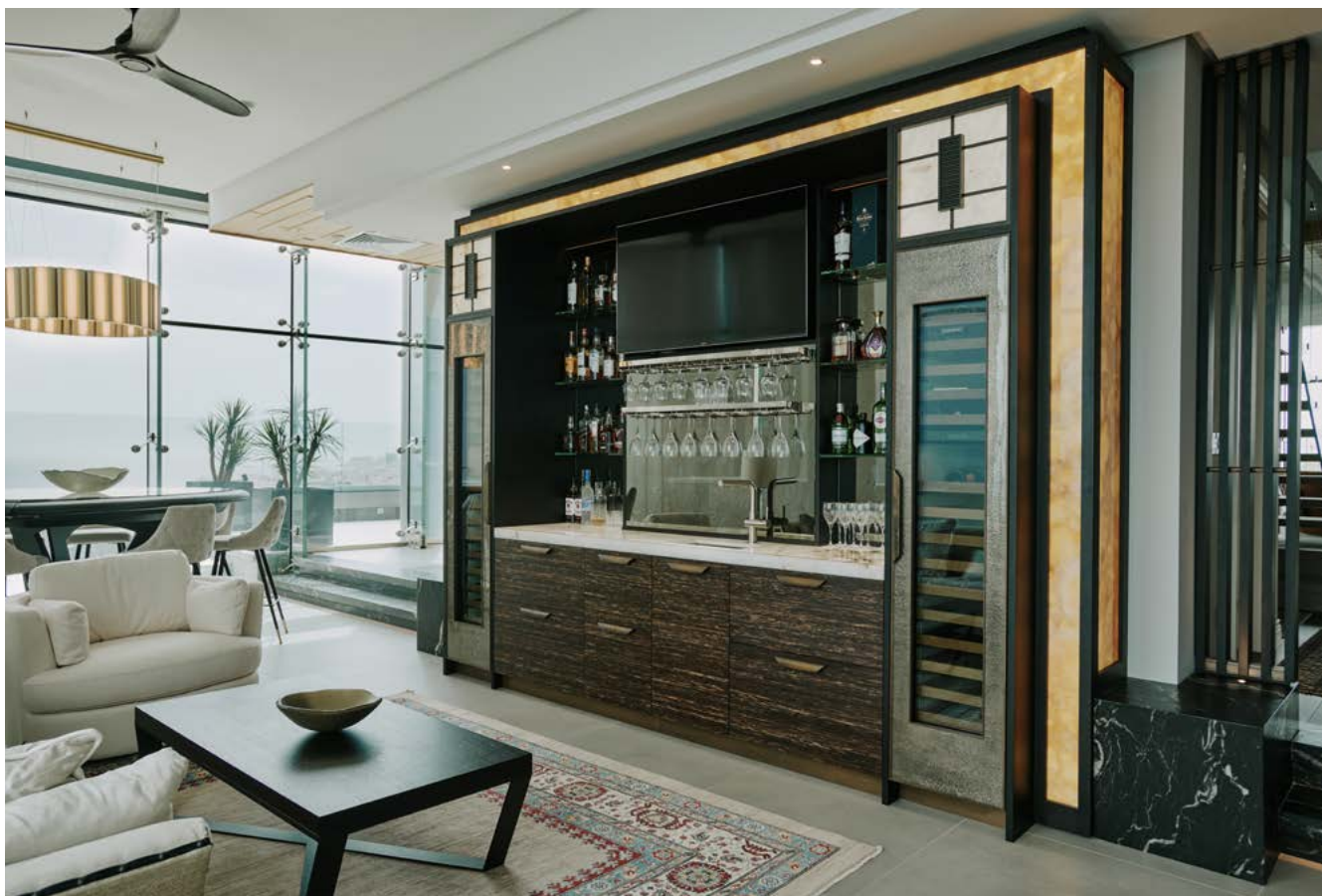
“The tall cupboard includes a large cabinet with pocket doors, which cleverly hide prep space, storage and additional sink all in one area, so any cooking detritus can be concealed as needed. There is further storage above and below the microwave oven and a fridge-freezer to the left. We grounded this large piece of furniture in the room with timeless black palm veneer for the fronts, with a stained oak frame

that is the same shade as the oak ceiling.”

The breakfast cupboard is a great addition, what can you tell us about it?

“The idea behind the breakfast cupboard was to create a standalone piece that was completely different from everything else in the kitchen. As such, it is made of stainless steel with liquid bronze pocket doors that slide back to offer full access. Inside, there are polished stainless steel and walnut drawers, as well as a countertop made of practical Mont Blanc quartzite, which adds to the modern elegance of the piece.”





Round the corner from the kitchen is the bar area - what was your concept for this?

"To tie the bar's design to that of the kitchen, we once again used black palm for the base cabinets and the same bronze handles. We then harnessed our signature use of metal to create hammered pewter fronts for the wine cabinets. To add a dash of theatre to the space, we chose crystal quartzite for the worktop and framing, both of which are lit from underneath to create a stunning effect at night!"

And your favourite part of the project as a whole?

"I have to say that I love the funky bar table! It's shaped like a shield with a centre section in onyx that is lit from underneath, with black

and white marble and a leather armrest around the outside. The blackened steel legs hide all the electric components of the design. Sitting at that table, having a drink from the bar, and enjoying those views, it doesn't get any better than that!"

Prices for a Ledbury Studio kitchen start from £70,000.



Ledbury Studio, 4b Ledbury Mews North, London W11 2AF

020 7566 6794 or **ledburystudio.com**

Find Ledbury Studio on **Instagram**, **Twitter** and **Facebook**

LIQUID METAL FINISHING

In the realm of design and craftsmanship, few things captivate the imagination like the artistry of liquid metal finishing.

It is a delicate dance between creativity and precision, where skilled artisans transform ordinary surfaces into extraordinary works of art. At Lignvm, we have honed this craft to perfection, specialising in bespoke coatings that push the boundaries of possibility. With a team of experienced artisans dedicated to turning your vision into reality, our liquid metal patina finishes have the power to transform your kitchen into a space of unparalleled beauty and uniqueness.

The kitchen is often considered the heart of the home, a place where culinary magic happens, and memories are made. Elevating the aesthetics of your kitchen with liquid metal patina finishes can take this essential space to new heights.

This November, step into a world of limitless possibilities at our brand-new kitchen showroom in Hungerford. Witness the fusion of artistry and innovation as our liquid metal surfaces redefine kitchen aesthetics. Each masterpiece exudes a seamless blend of form and function, transforming your space into a visual symphony of texture, depth, and style.

Here's how Lignvm can cover various surfaces in your kitchen with this exquisite technique:

Cabinetry: The kitchen cabinets are a canvas waiting to be transformed. Lignvm's liquid metal patina



finishes can be applied to cabinet doors, drawer fronts, and even cabinet hardware. Whether you desire a sleek, modern appearance or a weathered, vintage charm, our artisans can create the perfect finish to suit your style.

Countertops: Your kitchen countertops deserve the royal treatment. Our liquid metal patina finishes can be expertly applied to various countertop materials, including wood, concrete, and metal. Imagine a shimmering bronze or a rich copper patina gracing your kitchen's work surfaces, adding an air of sophistication to your culinary endeavours.

Backsplashes: The kitchen backsplash is an excellent place to make a bold statement. Lignvm's liquid metal patina finishes can be customised to create unique textures and patterns that not only

protect your walls but also serve as a stunning focal point. Whether you prefer a minimalist, monochromatic look or a vibrant, artistic design, our team can bring your vision to life.

Range Hoods: Transform your kitchen's range hood into a piece of functional art. Our artisans can apply liquid metal patina finishes to range hoods of various materials, making them stand out as a centrepiece in your kitchen. From sleek and modern stainless steel to the rustic elegance of aged bronze, the possibilities are endless.

Fixtures and Hardware: Every detail matters when it comes to kitchen design. LIGNVM can customise fixtures and hardware, such as faucets, handles, and knobs, with our liquid metal patina finishes. This attention to detail ensures a cohesive and harmonious look throughout your kitchen space.

So if you're ready to transform your kitchen, get in touch with Lignvm today on **01488 726888** or visit **www.lignvm.com**

LIGNVM

By Creative Metal Solutions LTD

BESPOKE LIQUID METAL DOOR COVERINGS

At Lignvm, we pride ourselves on our ability to create bespoke coatings that are truly limited only by your imagination. Our skilled artisans have years of experience in the art of metal finishing, and are dedicated to creating stunning and unique finishes that will make your project stand out.

Whether you are looking for a modern, sleek look or something more rustic and antique, we can work with you to create the perfect finish for your needs. From custom colours to unique textures and patterns, our team can bring your vision to life in a way that is truly one-of-a-kind.

If you would like to learn more about our liquid metal process, then please get in touch. We would be delighted to discuss your project and how we can work together.



www.lignvm.com • +44 (0)1488 726 888

MINIMAL APPEARANCE, MAXIMUM PERFORMANCE

Built-in extractor hoods deliver the clean uncluttered look and the efficient use of space that homeowners are increasingly looking for.

They provide an understated and powerful answer to cooking requirements and, being elegantly concealed within the kitchen are the choice for open plan living or kitchens with a minimalist style.

Elica offers a range of high-performance built-in models with extraction rates of more than 600 m³/h, whilst maintaining low noise levels. Many models are very slim, making them ideal for UK specification cabinets and offer super easy installation. Models are available with either duct-out or re-circulating filter options, and in stainless steel, soft black and white glass finishes.

New to the Elica range is SLEEK 2.0 ADVANCE, which features Airmatic with smart sensors that can monitor and react to air quality to set the most suitable power level even when you are no longer cooking. This provides the optimum balance between usage, energy efficiency and low noise levels. Available in 60cm and 80cm widths, it is rated as Energy Efficiency Class A with a boosted maximum airflow of 690 m³/h and comes with strip LED lighting. The LED lighting comes with a dimmer and has Elica's "Tune White" feature so homeowners can adapt the intensity and the warmth of the light to create the desired atmosphere and to match other nearby lighting.

The Elica BOXIN range is ideally suited to "continental" style cabinets without cut-outs. The units disappear completely, effectively replacing the bottom



of the wall unit. Within the BOXIN range are four models. All available in 60, 90 and 120cm sizes. BOXIN LUX is a powerful and competitive entry level model. BOXIN HE has a very high performance and perimeter aspiration. Where condensation is a problem there is BOXIN DRY and BOXIN Advance has the highest performance and AIRMATIC function.

And for customers on more modest budgets Elica offers the FOLD and ERA ranges of extractors both of which come in multiple versions with different powers and a range of finishes including stainless steel and soft black.

elica.co.uk



5
YEARS
WARRANTY



NIKOLATESLA UNPLUGGED NEVER SO EASY.

Enhance your kitchen with the new NikolaTesla Unplugged extractor hob - effortlessly controlled with its easy to use knobs, making even the most complex cooking simple. All in the unmistakable style of Elica.



reddot winner 2023

Design Fabrizio Crisà



elica.co.uk



MAGNIFICENT BEACHFRONT APARTMENT IN THE PHILIPPINES

NATURALISTIC, MODERN & ELEGANT

Considered as one of the most paradisiac places in the world, our new design projects created by the top Adefuin Design Studio, founded by Philippine design star Jigs Adefuin, show off the ultimate residential projects in town. Located in the Philippines, this unique design shows the ultimate home project where comfort, simplicity, and elegance prevail.

Every room features a unique environment composed of design excellency and naturalistic details so that the overall look can complement the beautiful beachfront views where nature is the star. Like any other space created by the renowned interior designer, nothing in this beachfront home design was accidental, everything was carefully thought until the tiniest detail to harmonize and engage the senses, and evoke positive emotions. Featuring a carefully chosen selection of high-quality materials and sophisticated

color tones, this incredible modern home project features 5 different experiences flowing throughout the minimalist design. Don't miss the tour of the most elegant modern house in the Philippines!

ABOUT THE DESIGNER

"An explosion of emotions—that's what I want you to feel when you enter a space I designed."
(Jigs Ranada Adefuin)



Considered as one of the most prominent interior designers, Jigs Adefuin has been revolutionizing the industry with his unique signature vision for over the past 20 years. His success started at the beginning of his journey since Jigs has the opportunity to start his professional training at Nardy Aquino Interior Design Studio and Ethan Allen for almost 11 years and earned his Masters's in Interior and Living Design from Domus Academy in Milan, in 2014.

Recognized as a "client's designer", Jigs can excel in crafting timeless spaces by instantly visualizing a cohesive, well-planned look for any space presented before him. All of his unique projects are centered on the client's needs to make sure that the final result consists of beautiful interiors that highlight their personality and individuality, that is why he doesn't limit his creativity to one single style.



His dedication to quality, keen attention to detail, and natural empathy for clients have garnered some important recognitions such as Manila's Elite Interior Designer by Philippine Tatler in 2015 and Best Interior Design for 32 Manila ORT, by International Property Awards in 2017. Despite all the recognition he has received over the years, he takes greater pride in having elevated the lifestyles of people who trusted his signature design vision of creating beautiful and meaningful interiors.

Jigs Adefuin aims to "design a better world, one space at a time" and this home project is another example of his design excellence. Don't miss the tour of the most elegant modern house in the Philippines!

LIVING ROOM

Simplicity and design excellence are combined in this sophisticated living room set. The minimalist background, almost like a refined art gallery, allows each unique piece to have its single "voice" in the design without overshadowing the rest of the look. Keeping up the all-white-inspired ambiance, the designer Jigs Adefuin decided to choose Studiopepe and Essential Home's Fitzgerald Sofa as the grand

focal point of the living room decor, complementing the look with the fabulous Jacobson side tables. A statement wall was created with white marble and wood, to highlight the gorgeous combination of Essential Home's Monocles sideboard and DelighttFULL's bespoke Matheny pendant lamps.

DINING ROOM

As we step inside the dining room design we can see that the renowned Philippine designer decided to keep the same gallery-like vision with a few extra details. The accent marble and wood walls were perfectly combined with a naturalistic design statement across the room, giving this unique space a soothing and relaxing vibe that connects nature. For the dining room set, Jigs Adefuin decided to choose as a centerpiece a custom version of the beautiful Alberto dining table by Carlo Donati and Essential Home, a later pared it up with the brand's best-selling dining chair called Collins, a piece that provides style and comfort at the same time. However, it is the beautiful Brubeck Round suspension fixtures by DelightFULL that make this contemporary dining set shine to its full potential.



MASTER BEDROOM

Comfort, exclusivity, and design excellence, three simple words that describe the inspiring look of this unique master bedroom designed by Jigs Adefuin. This unique space features bespoke marble walls and flooring to contrast with the beautiful Minelli bed and nightstand by Essential Home and the Botti lighting fixtures by DelightFULL. The space also features a small yet sleek office corner with the beautiful Lasdun desk, as well as a bespoke lounge space. This living room set shows the unseen luxury side

of mid-century through its unique high-end selection of pieces, such as DelightFULL's Brubeck floor and pendant lamps, and Essential Home's best seller Botti side table.





GUEST BEDROOM

Although the master bedroom is one of the best looks of this unique project by Jigs Adefuin, the guests of this beachfront apartment will also have a sublime design experience since the guest bedroom design was carefully created until the last detail. Neutrals tones and soft materials make the perfect background to Essential Home's designer pieces, such as the Kerr dining chair by Masquespacio or the Francis Scott Side tables by Studiopepe. It also enhances the brand's iconic Edith sideboard that is perfectly paired up with DelightFULL's opulent Galliano pendant lamps.

HOME OFFICE

Last but not least, the grand home office where Jigs Adefuin reinvented the traditional concept and decided to create a modern space perfect for the daily work routine and even host any professional meeting when needed. The interior design look follows the simple all-white lines that we had in the main living/ dining space, and was elevated with some bespoke details, like the custom storage space in the back. Instead of choosing a traditional library look, the top designer decided to recreate a bespoke meeting room as the office area, a room that we could find in any headquarters project. The centerpiece is the unique Ezra table by Studiopepe and Essential Home that is lighted with the bespoke Ike suspension lamp, one of DelightFULL's most iconic pieces from its Heritage collection. These unique spaces were carefully designed to match the outstanding views of the Philippines' natural environments.

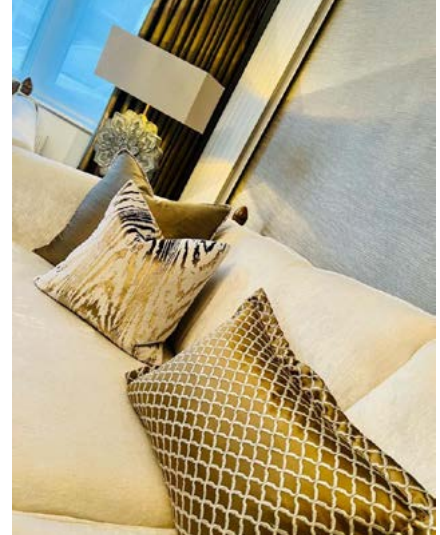


FOLLOW US: [@delightfull](https://www.instagram.com/delightfull)

Images: ©Adefuin Design Studio/DelightFULL

DISCOVER SELCOUTH INTERIORS: WHERE LUXURY MEETS FAMILY LEGACY

Welcome to Selcouth Interiors, where luxury furniture is thoughtfully curated by our family for yours. As a family-run business, we hold craftsmanship, heritage, and warmth close to our hearts, ensuring that each piece in our collection is a testament to artistry and dedication.



Our journey began over 20 years ago at Designer Fabric Store, led by our founder, Debbie. While specialising in custom-made curtains, blinds, and designer fabrics, we discovered that our customers were also seeking exquisite home furniture to complete their spaces.

With a proven track record of delivering top-tier quality and style to discerning clients, Debbie launched Selcouth Interiors to service our customers needs. Together, we offer a holistic interior design experience, fusing the worlds of textiles and furniture to create living spaces that are both aesthetically stunning and a true reflection of your individuality.



At Selcouth Interiors, we believe in transforming your living spaces into cherished havens of comfort and style. Our handpicked collection ranges from classic to contemporary, catering to your unique taste and vision.

Choosing Selcouth Interiors means joining our extended community across both companies.

Selcouth Interiors and Designer Fabric Store invite you to embark on this journey with us and discover how we can seamlessly align your home environments.

For exquisite furniture pieces to start this journey visit:

selcouthinteriors.com

For made-to-measure curtains, blinds, and a wide range of fabrics, visit

designerfabricstore.co.uk



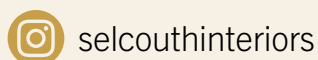
Unleashing the Beauty of Your Vision

Welcome to our exclusive interior design service, where we transform your living spaces into timeless havens of sophistication and comfort.

Debbie Glover, our expert designer is dedicated to helping you curate a bespoke environment that reflects your unique style and aspirations. Whether you're browsing our exquisite furnishings or seeking personalized design guidance, we're here to turn your vision into a reality. Explore the artistry of interiors with us and discover a world of luxury living.



FOLLOW US ON SOCIAL MEDIA



Valérie Barth

"We shape the setting for our lives with well-designed spaces; where significant and memorable moments take place. Celebrating these precious instants with friends, family, and loved ones"
Valérie Barth.



Valérie Barth is a distinguished architectural, interior design and decoration studio based in Cap d'Antibes on the French Riviera, Paris and London. With a rich history that extends back to 2004, the studio has flourished over the years. Winning the Europe Property Awards for Interior Design of Private Residence in France for the project luxury Californian Villa. And since its inception, Valérie Barth and her team have displayed remarkable talent and a keen eye for design and project management from conception to completion for elegant, aesthetically pleasing Turnkey projects.

Leaving an indelible and unique mark on the luxurious landscape of the French Riviera. The studio Valérie Barth's portfolio boasts a series of extraordinary creations that cater to a discerning clientele, each project seamlessly

blending with the breath-taking surroundings of this world-renowned coastal haven.

Beyond design and construction, the projects reflect their lasting commitment to strong human end eco-friendly values. Every architectural masterpiece, every thoughtfully designed interior, encapsulates a deep sense of grace, elegance, and a unique connection with the client's vision. One of the most extraordinary aspects of their work is that it goes beyond the completion of a project.

The captivating hue of Mediterranean colour, reminiscent of the picturesque shades of the French Riviera, is meticulously crafted to infuse any space with an aura of joy and tranquillity, whether it be indoors or outdoors. Its exceptional versatility makes it a splendid choice for a diverse

creative application whether provided from international brands or in-house Studio Valérie Barth design as a fabric, furniture object, a wallpaper or simply a curtain. This vibrant and subtly assertive colour can be harnessed to reinvigorate outdoor decor elements, breathe new life into time-worn furniture, and rejuvenate interiors.

At Valérie Barth's, our dynamic team is a fusion of multi-disciplinary talents, an ensemble of architects and interior designers who possess an innate ability to shape and customise your every requirement in perfect harmony with the unique essence of each project. We are the artisans of your vision, dedicated to crafting distinctive and tailor-made solutions that bring your perception to life.



www.valeriebarth.com | +33 699.167.573



✓alérie Barth

Architecture - Interior Design - Decoration

Antibes - Paris - London



A ROYAL CENTRAL APARTMENT - WHERE CLASSIC AND CONTEMPORARY MEET THROUGH BESPOKE PIECES



Interior Designer: Kris Turnbull Studios

Location: Dublin, Ireland

Style: Classic, Contemporary, Royal

Main Brands: Boca do Lobo

Client(s): Couple who owns different properties

Located in the dynamic city of Dublin, this fashionable one-bedroom apartment was completely rebuilt from scratch by Kris Turnbull Studios to meet the expectations of the couple who owns it.

With high ceilings and stunning views of the Grand Canal, the contemporary interior completely matches the Nature that surrounds it. The interior designers chose bespoke and refined furniture that creates a harmonious balance between traditional and modern. This one-of-a-kind aesthetic finds in layering one of the trends that inspired this composition, as the mix of fabrics and brass artwork enriches the home, making it a hidden gem in the Irish capital.

Entering this magnificent residence, a black and white marble corridor leads us to the central room





of this interior, the living room. Giving warmth and comfort, a classic fireplace contrasts with the contemporary lines of the curvy sofa, that perfectly match Boca do Lobo's Wave Center Table. This is an original and stylish coffee table for modern living rooms, which is developed by Portuguese jewelry artisans with hand-hammered

brass and a black mirror top. The living room look is completed by more extravagant pieces that add a little fun to the design, such as the suspension lamp and the side table.

Moving to more private areas, such as the master bedroom and the bathroom, a royal and eclectic style is more present and it is

visible in the curtains, for example, and in the bathroom aesthetic. The Master Bedroom crosses a classic and "princess" look with a modern design with simpler lines and sober colors. The bathroom is fully covered in marble and gold, elevating the space and taking it to a more luxurious level.



B Sir William



Bespoke & antique billiards. Chosen by design.



Bentley Billiards



www.billiards.co.uk | +44 (0) 1264 731 210





A CURATED HOME

TAofD: Can you tell us a little more about this project?

PD: We were presented with a dull basement property in the heart of London that lacked any character. Through a rigorous design process, we were able to convert this flat into a completely amazing oasis of light. Utilizing tactile materials such as linen, rattan, jute, live-edged wood and lime wash we achieved a 'trend-setter' apartment.

TAofD: Which interior design styles can you cater to?

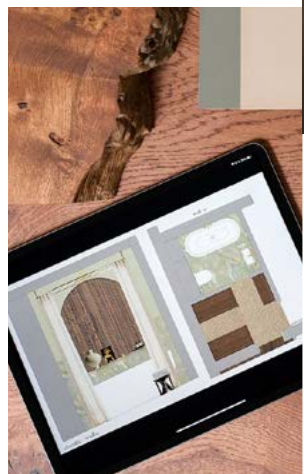
PD: We are not limited to a specific interior style because it's not about us, but what the customer's lifestyle, requirements and budget is.

TAofD: What are some of your favorite decor suppliers?

PD: We love sourcing from 1st Dibs, Eichholtz, Bauwerk, Nordic Knots, and Jim Lawrence amongst others. I also do a lot of bespoke furniture and lighting for my clients.

TAofD: What's your interior design process?

PD: Once on board, we present a comprehensive overview that includes moodboards, 2D CAD drawings, 3D visuals, sketches etc. This helps us create a detailed project plan with key dates and details, our clients love the transparency that it provides them with.



PEMBERLEY™ DESIGN LTD

Founded in 2019, we are a fast-growing interior design studio based in Surrey, UK. We offer a full interior design and project management service from concept to completion. With access to thousands of suppliers and a team of skilled craftsmen, we are ready to take on any project big or small.



NOW BOOKING FOR JANUARY 2024

We create bespoke homes tailored to each of our client's requirements, lifestyle and budget

Website : www.pemberleydesign.com Email : info@pemberleydesign.com Contact : (+44) 7774853533



instagram @pemberleydesign

WELCOME TO TRIPLE AWARD WINNING TAILORED CURTAINS

Corinne, CEO of Tailored Curtains, says:

"Intrigued by beautifully dressed windows from a young age, they are always the first thing I notice when I enter a room; they are very tactile and can change the feel and atmosphere of a space completely.

I made my first pair of self-taught curtains with traditional swags and tails at the age of 13. The pink satin drapes were such a big hit, Mum then commissioned me to dress all the windows in the house. This was when I realised my passion, so you could say I've made curtains my whole life.

With the huge demand for bespoke curtains, it's a great investment in finest top quality, not only are curtains functional helping to keep out the cold and cutting down on those energy bills in the winter months, you'll also have something beautiful that will last a lifetime."

A BESPOKE SERVICE TAILOR-MADE FOR YOUR HOME

Our hand stitched, made-to-measure products are made to the highest standards and completely bespoke with attention to detail being one of our top priorities.

With all the bespoke finishing touches your project requires along the way for all your Soft Furnishings needs whether it's Curtains, Blinds or Upholstery.

Initially, clients are booked in for a home consultation where we come along with fabric options, take accurate measurements, and

discuss your design and any ideas you may have.

We offer a full, personal, professional service from start to finish, which also includes the supply and installation of all window hardware.

Booking a consultation is quick, easy and hassle free.

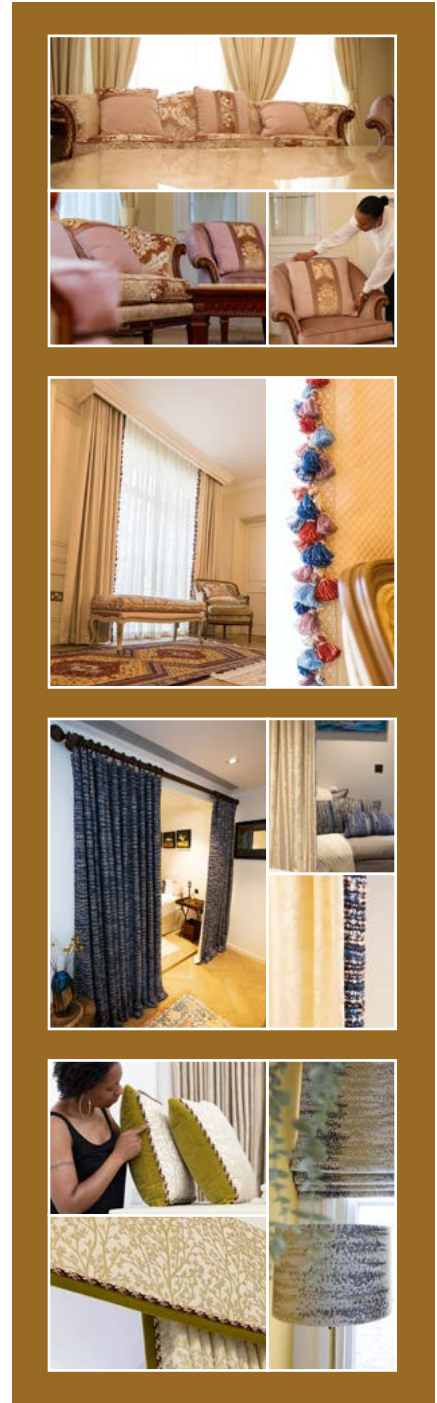
Check out our new Online Shop, bespoke handmade one off designs - Cushions, Lampshades/ Bedroom Sets.

FROM CELEBRITIES AND HIGH-PROFILE CLIENTS TO LONDON'S LOCAL COMMUNITIES...

We are proud to have worked with clients of every description from Celebrities, Interior Designers and Architects to Commercial/ Corporate and Domestic clients. No job too big or too small.

One of our current projects, Tailored Curtains has been commissioned to dress windows in a Grade I listed Jacobean Stately Home with over 100 windows which we're so excited to see the finish.

 **Tailored
Curtains**
Vision | Design | Bespoke



www.tailoredcurtains.co.uk



Award-winning curtain makers and soft furnishing suppliers

Bespoke, beautifully designed curtains, blinds and home interiors, handmade and fitted by people whose passion for quality is sewn into the very fabric of our business.



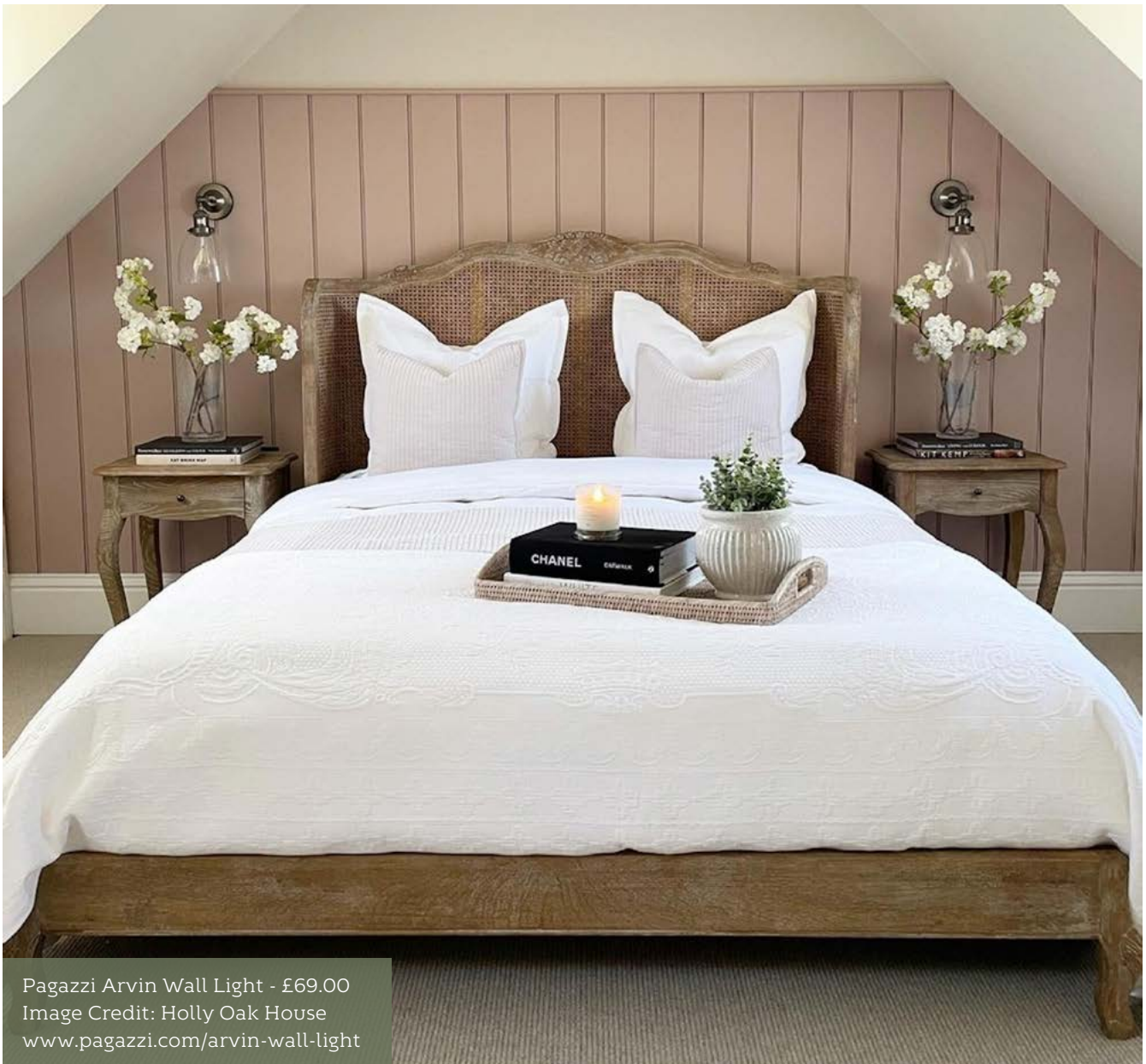
2022 Award Winner

Handcrafted Curtain Specialist
of the Year | United Kingdom

Tailored Curtains
Best Bespoke Handmade Curtain
Design Company - London



HOW TO PLAN LIGHTING



Pagazzi Arvin Wall Light - £69.00
 Image Credit: Holly Oak House
www.pagazzi.com/arvin-wall-light

REBECCA PAGAN | COMMERCIAL DIRECTOR AT PAGAZZI LIGHTING

How the right lighting can make or break a room

Lighting is such a key aspect of home decor yet can often be overlooked. The right lighting has the power to completely transform your interior aesthetic, providing a starting point for the décor scheme of your room, creating dramatic focus and engendering a warm

and inviting ambience, all whilst displaying your unique style and personality.

Clever use of lighting is a sure-fire way to open up a space - well-lit rooms invariably appear larger - as well as creating a welcoming atmosphere and providing optimum illumination for every activity carried out in that

space. Warm lights are ideal for relaxing spaces, whereas cooler, brighter lighting is generally more energising, making it better suited to kitchens and work areas. Take the natural light of the room and how it interacts with your artificial lighting into account when thinking about your lighting scheme. Light alters our perception of the volume



Pagazzi Sigma 9 Light Chrome Chandelier - £569.00
Image Credit: Life with Jen
www.pagazzi.com/sigma-9-light-chrome-chandelier



Pagazzi Otto Floor Lamp - £289.00
Image Credit: Yasi Fatollahy
www.pagazzi.com/otto-170cm-floor-lamp

and depth of a space, so the right lighting will make colours appear more vivid and rooms more spacious.

Layering of ambient, accent and task lighting

For most rooms in the home, it's preferable to include more than one light source - usually a main ceiling fitting for general lighting paired with extra layers of lighting from wall lights, floor lamps and table lamps. In a living area for example, you probably won't want the overhead light on when you settle down to relax in the evening.

Wall lights are a fabulous way of introducing an extra layer of lighting into a room when used in conjunction with the ceiling light. When used alone, they can provide subtle lighting in a hallway - wall lights placed at intervals along the wall of a staircase and situated to mirror the upwards slope of the stairs are an incredibly effective

way to open up this often cramped or narrow space - or ambient dinner party lighting in the dining room or kitchen.

Well situated picture lights are perfect for accent lighting and highlighting favourite wall art, casting just the right amount of light, drama and depth. For task lighting, switched wall lights make a fabulous alternative to reading lamps in the bedroom, ideal for freeing up space on bedside tables or next to a bathroom or dressing table mirror for shaving and applying make-up.

Floor and table lamps are another great option for ambient and task lighting. An aesthetically pleasing arc lamp curving over a favourite chair or sofa makes a beautiful focal point, perfect for adding ambient light to a dark corner or providing task lighting for reading or sewing. The relatively small base means it can work in a smaller room with limited floor space - the base

nestles behind whilst the overarching lamp projects out over the seating.

Basic room requirements

Everybody's taste is different so choosing lights is a very personal experience. It's important to opt for pieces that you love, but that will also work with the size, style and décor of your room. Oversized lights are always on trend but may make a tiny room with a low ceiling appear overcrowded. Equally, a discreet flush mounted fitting could look lost in a large space with a high ceiling.

Spare some time to work out your measurements - it's no good choosing a huge chandelier or long drop pendant as your centrepiece if you can't walk under it without bumping your head. Low hanging fittings can also sometimes make the ceiling appear lower and the room cramped and less spacious. Having said that, if you've fallen



Pagazzi Giant Black Arc Floor Lamp - £259.00
www.pagazzi.com/giant-black-arc-floor-lamp-98011bk

in love with a particular light, it's always worth experimenting with scale, no matter what size your room.

Statement ceiling lights

The ceiling light is usually the largest light in a room and therefore a focal point, so it's important that it not only provides great illumination, but also looks fabulous.

If you want to go big, opt for a fabulous show stopping chandelier, a glamorous crystal cluster pendant or an oversized sculptural piece that makes an artistic statement even when it's switched off. Situating a crystal fixture near to a window or mirror will lend extra shimmer resulting in a warm glow throughout your room.

Large styles generally work extremely well with high ceilings, so if you're lucky enough to have a double height stairwell or wraparound staircase, an elegant multi drop pendant looks particularly effective cascading down through the space.



Pagazzi Zelma LED Satin Brass Ceiling Pendant - £159.00
 Image Credit: Amy Elizabeth
www.pagazzi.com/zelma-led-satin-brass-ceiling-pendant



Pagazzi Karrie 3 Light Chrome & Crystal Ceiling Pendant - £199.00
 Image Credit: The Grey House Sparkles
www.pagazzi.com/karrie-3-light-polished-chrome-crystal-ceiling-pendant

There's nothing to stop you from opting for a statement ceiling light in a small room either. A contemporary multi-directional chandelier or futuristic sputnik piece makes for an impressive centrepiece and will enhance your space by casting light in every direction, making it appear bigger. A minimalist piece with an interesting design or unique shape can create just as much impact as an oversized and low-hanging chandelier.

Try suspending a ceiling light at a lower level than usual over a dining table or coffee table, guaranteed to make a statement and catch the eye. Thoughtfully situated low-level lighting will create an ambient cosy glow over a seating area and placing it over a table should reduce the risk of anyone bumping into it.

Theme / design style

Modern lighting comes in all shapes, styles and sizes from traditional to contemporary, crystal to candelabra, vintage inspired to industrial chic and wow-factor to quirky retro and downright glamorous. The function of lighting no longer rules the design, so have fun with elevating your interiors and dressing your room to impress.

The extensive and varied range of materials, colours and styles available gives so many options when it comes to home décor. It's easy to match your lights and lamps to your existing scheme for a seamless and cohesive vibe or make a stylish design statement by introducing a bold pop of colour with a vivid shade or unusual shaped piece.



Pagazzi Merton 3 Light Ceiling Light in Black - £199.00
 Image Credit: Sophie's Home Journey
www.pagazzi.com/merton-3-light-ceiling-light-black

LIVING ROOM LIGHTING

Layers of decorative lighting in your lounge can help with functionality as well as bring personality and style into your most versatile living space.

CREATE A CENTRAL FOCAL POINT

Whether it is a traditional period property or a modern minimalistic home, there are many decorative lights available to suit. Choose a light that has a metal finish that blends in with the architectural elements in the room such as brass, nickel or black door handles. Then if you have the space to create drama with a beautiful crystal chandelier or a modern LED sculptural light, this will help to bring a sparkling focus point into your room. You may have a low ceiling, so choose from a large collection of decorative flush or semi-flush fixtures for this situation. Consider installing dimmer switches in your lounge to enable you to create a relaxing ambience when settling down to relax or to watch a movie.

CREATING ADDITIONAL LAYERS

Wall lights offer a great opportunity to make them functional wall art, especially with dramatic oversized sconces. Consider accent picture lights to illuminate your favourite paintings or cabinet lighting to showcase your treasured possessions. The clever use of natural light from windows, reflected into the room from statement mirrors should help make the most of bright sunny days, along with beautiful soft candle light and fireplaces in the winter.



TABLE AND FLOOR LAMPS

A pair of table lamps on sofa side tables can add a final soft layer of light, as well as provide additional task lighting if they have flexible arms to pull out and direct light

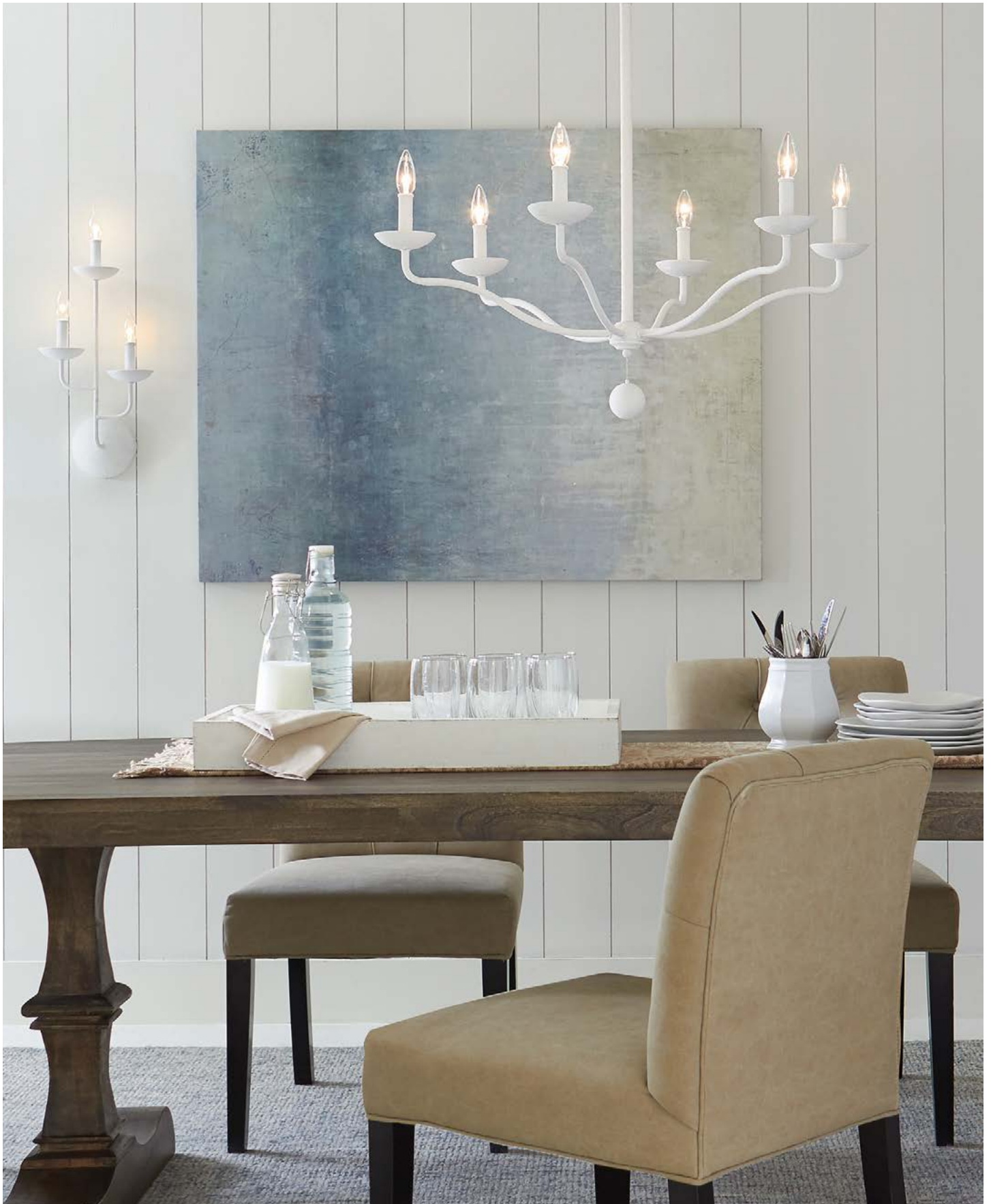


over your shoulder whilst reading or crafting. Table lamps are available in all shapes and can bring a pop of colour to your décor in the daytime, as well as provide a gentle light in the evening. Stylish floor lamps can help fill an otherwise dark corner when paired with an armchair to create a relaxing reading nook.

For more inspirational ideas to brighten up your living room, visit the Elstead Lighting showroom in Mill Lane, Alton, Hampshire where you will find more than 2,500 lighting models on display. The variety of choice is unrivalled, and our staff are on hand Monday to Friday 9-5pm and Saturday 9-1pm, to provide a friendly advisory service.



T: 01420 590510 | www.elsteadlighting.com



DESIGN BROUGHT TO LIGHT



Download the New Elstead 2024 Catalogues today

+44 (0)1420 82377 | enquiries@elsteadlighting.com | www.elsteadlighting.com

WHY ENIGMA?



Enigma lighting has established itself as one of the leading suppliers of light fittings in Europe.

Working with exceptional lighting designers, interior designers and architects we've been privileged to provide lighting solutions with great brands.

We understand every space is unique and requires a tailored lighting solution. We have a team of in-house designers who cater to your specific requirements and specifications.

Our exquisite lighting solutions tailored for hospitality, retail and residential spaces.

Elevate your surroundings with our stunning designs, crafted to perfection for a touch of elegance in every setting, whether you're

creating a welcoming atmosphere in a hotel lobby, enhancing the shopping experience in a retail store, or adding warmth to your home. Illuminate your world with Enigma Lighting.



SUSTAINABILITY

1. We aim to reuse and renew existing Enigma fittings to extend the life of the fitting even further. Typically we will strip down the fitting and replace the LED chip and driver alongside giving them all a full clean. This is typically around 50% the cost of a new fitting.
2. New products are frequently added to our 'high efficiency' list. Which in line with part L of the building regulations. This focuses on improving energy efficiency of lighting in both new and existing buildings where our products are installed. Our fittings will offer well over 95lm/w required to meet regulations (a massive set up from 60lm/w previously).
3. We repurpose all our cardboard by shredding it and then using it as packaging. This stops the need to use plastic packaging.
4. We are now partnered with Ecologi, and have so far offset the equivalent of 273.96 tonnes of CO₂, helping to reduce our carbon footprint.

enigma

www.enigmalighting.com

Hamilton[®]

Design & Innovation Since 1968



Market leaders in Decorative Electrical Accessories since **1968**.
Examples shown of our Flagship Dual Finish Linea Range.



LONDON | BRISTOL | BARCELONA

uksales@hamilton-litestat.com • +44 (0) 1747 860088 • www.hamilton-litestat.com



 **MADE IN
BRITAIN**

LIGHT 23 – NOT JUST FOR LIGHTING DESIGNERS



LiGHT 23 a one-stop-shop of inspiration for all designers.

LiGHT - the only trade show in the UK dedicated to lighting specification - will build on the success of its first year in 2022 by enhancing its offering to attract the wider design community.

A common misconception is that trade shows dedicated to lighting specification are just for lighting designers. This, put simply, just isn't the case...

Lighting is one of the first things that should be considered when working on a project - whether you're a client, developer, architect, interior designer, or lighting designer. The importance of working with the right tools and having the right knowledge to produce the best light - and in turn the best environment for the end user - is undeniable. So many times, lighting is an afterthought on a project, when it should be at the forefront of everybody's minds.

So, if you're NOT a lighting designer why should you attend LiGHT 23?

Well, ask yourself these questions...

1. Do you work on commercial and / or high-end residential projects?
2. Do the projects you work on feature lighting in some capacity?
3. Would you like to understand more about the

effects of good and bad lighting on design schemes and the end user?

4. Would you like to broaden your knowledge on the built environment?
5. Would you like to make new connections within the industry?

If you answered YES to even just one of these questions, then LiGHT 23 is the event for you and with FREE visitor registration, what's to lose?

LiGHT 23 will feature 100s of high-end lighting brands all under one roof - perfect for residential and commercial projects large and small. From sourcing IP-rated products that can bring a stunning bathroom or garden design scheme to life; to statement decorative pieces for a restaurant or bar project; or perhaps you're working on a big hotel project and need a company that can fulfil a large order... Maybe you need something more bespoke? With lighting brands from all over the world on show, we guarantee, there will be a product at LiGHT 23 that fits the brief.

Not only that, LiGHT 23 will once again host the highly regarded talks programme [d]arc thoughts, featuring experts from across the world of design, editors from speciality design magazines including arc, darc, ICON, and OnOffice, while covering topics that affect all areas of the industry, such as sustainability & circular design; designing for a global client; designing for healthy office spaces; and designing for small & large spaces, to name just a few...

Watch this space for a full talks programme announcement coming very soon!

The show's association partners will also support the talks programme with speakers from the likes of British Institute of Interior Design (BIID); Society of British & International Interior Design (SBID); NLA; Institution of Lighting Professionals (ILP); Society of Light and Lighting (SLL); and the International Association of Lighting Design (IALD).

The BIID and IALD will also be hosting members and potential new members in the Associations Lounge at the show, which will be a welcome chill out area for visiting designers throughout the two-day event. Why not join the IALD for a drinks reception as part of the late-night opening on 21 November, or the BIID for a designers' lunch on 22 November.

Also new for this year is darc space, a dedicated area for decorative lighting brands to shine. darc space will provide lighting and interior designers and specifiers looking for their next stunning light feature a one-stop-shop of decorative lighting brands to choose from.



For the most recent up-to-date exhibitor list and all visitor information head to www.lightexpo.london

STEP INTO THE...

LiGHT23

The UK's only dedicated lighting specification exhibition

REGISTER FOR FREE

HANDMADE BESPOKE LAMP SHADES



A Shade Above is the world-leading specialist in handmade bespoke lampshades. They are the go-to supplier for hundreds of hospitality clients, offering the ultimate in lampshade quality and service.

They work with designers, procurement teams and housekeeping teams direct. Whether hoteliers need a one-off replacement shade, or a large rollout redesign operation, A Shade Above's workmanship, experience, and service capability offers consistent excellence.

On complex projects, lampshades can be one of the last details considered. A Shade Above expert makers, project managers and technical advisers will help pull lampshade projects together and create dependable, fit-for-purpose and stunning products.

From intricate pleated sculptural lampshades to contemporary silk empires in quantity, A Shade Above meets all fabric lampshade demands.

They have worked on a range of incredible projects for client such as The Royal Opera House, The Dorchester, Claridge's, Soho Houses around the world, The Berkeley, and The Ritz London.



When it comes to lampshade production, no other workshop in the world compares to A Shade Above.

A SHADE ABOVE
BESPOKE • HANDMADE • LAMP SHADES

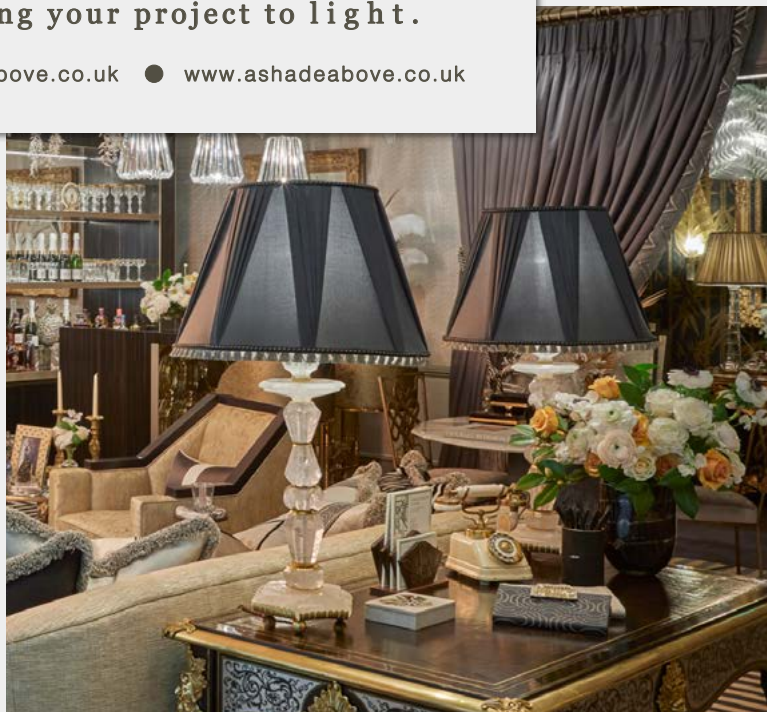
For more information, visit: [ashadeabove.co.uk](https://www.ashadeabove.co.uk)



A SHADE ABOVE

Bespoke lampshades to bring your project to light.

0044(0)1273 881130 ● design@ashadeabove.co.uk ● www.ashadeabove.co.uk



DESIGNING LIGHTING FOR THREE GENERATIONS

Franklite is celebrating a very prestigious milestone this year, its 50th year in the design, manufacture and distribution of high-quality decorative lighting. Over the years Franklite has manufactured exquisite products for the retail, commercial and hospitality markets including bespoke project designs.

The passion for lighting has been within the Lissauer family for three generations. Taking his father's passed down knowledge and many years of experience owning a number of lighting shops in various provinces of South Africa Frank Lissauer decided to relocate to the United Kingdom and establish Franklite in 1973.

Growing and developing the business over the years took dedication and countless hours of hard work by Frank Lissauer but these responsibilities were eventually shared when his son, Mark Lissauer joined the business in 1999.

The family owned business has achieved significant milestones over the 50 years which include moving to a much larger purpose built factory in 1990 after quickly outgrowing the previous premises, an in-house laboratory which holds



state-of-the-art lighting technology which very few other lighting manufacturers within the UK possess, an expansive warehouse and assembly area where products and parts undergo stringent quality control and finally an exquisite showroom.

Franklite's first ever catalogue included the Delft range as one of its first products. The traditional 'flemish' style design has made these fittings classic and timeless. 50 years later this popular range is still available in the current Catalogue 26. Many iterations have followed over the years, like the Halle and Mondrian which continue to follow the 'flemish' design style.

2021 was the year Franklite received recognition for winning two awards within the hospitality industry - Best in Tech and Best Retail Decorative Lighting Manufacturer.

Franklite has a story to tell. They are far more than just a lighting manufacturer; they are creators, visionaries and craftspeople who continue to pride themselves on their manufacturing and service excellence. At the heart of Franklite is a highly-skilled team who understand the importance of good product design that will stand the test of time, both technically and aesthetically.

Over the next 50 years the hope is that Franklite continues to grow and remain a renowned family business whilst maintaining the core principle which Franklite was founded - to offer products that balance optimal performance with beautiful aesthetics.



FRANKLITE WOLVERTON 1978

Franklite first built premises with a young Mark Lissauer - Wolverton 1978



Franklite Current Factory

www.franklite.co.uk

decorative lighting solutions | commercial | hospitality | project designs | residential | retail

Celebrating
50 years

of manufacturing
lighting



franklite

www.franklite.co.uk · hello@franklite.co.uk · +44 (0)1908 691 818 · [f](#) [@](#) [in](#)



DESIGNER LIGHTING HANDCRAFTED BY CONTEMPORARY BLACKSMITHS



For over 20 years this small team of artisan blacksmiths have been designing, developing and handcrafting beautiful lighting pieces using traditional metalworking skills.

As makers, it's important to Nigel Tyas Ironwork, that they design everything they make themselves. All designs draw inspiration from a fusion of traditional and contemporary styles. Across everything, they're committed to the principles of the Arts and Crafts movement which puts good design and true respect for their material at the heart of everything they make. Their work features in an array of properties including luxury hotels, private residencies, ski chalets and log cabins as well as several stately homes including Windsor Castle, Bolton Castle and Chatsworth House. Their work has also featured in film and television production both here and overseas.

Working with interior designers and architects is a regular part of the business as they help translate a client's vision into reality with bespoke lighting pieces or tailor

made items that fit the style of a home. The company's links with other local craftsmen for handblown glass or ceramics, along with British made lampshades and brass fittings, allows them to combine elements to make a truly incredible product range that stands out against a sea of familiar products and provides a true heritage that will last a lifetime. And, by managing the whole process in house, the team can ensure the highest quality throughout.

Today, lots more people value the provenance of an item and want to see higher standards of



sustainability and ethical business practices. As a small independent craft business, Nigel Tyas Ironwork openly share the story of their products - how they make them - via social media. And, they do all they can to control their carbon footprint, manage energy consumption as efficiently as possible, reduce waste and tackle unnecessary plastic usage. This is both their passion and their pride.

Nigel Tyas Ironwork encourages you to contact them to discuss your requirements for lighting pieces.

01226 766618 | sales@nigeltyas.co.uk
www.nigeltyas.co.uk | [@nigel_tyas_ironwork](https://www.instagram.com/nigel_tyas_ironwork)

 **MADE IN
BRITAIN**



nigeltyas.co.uk

QUALITY &
CRAFTSMANSHIP

 **NIGEL·TYAS**
IRONWORK

HOW TO DESIGN A LUXURY BATHROOM WITH LAMINAM'S **SUPERIOR NATURAL PORCELAIN SURFACES**

When it comes to designing a new or renovating an existing bathroom, small or large, creating a luxurious and indulgent space for rest and relaxation is often top of mind.

In order to create such an environment, it's important to select the right materials, colours and products that not only are visually pleasing, but are moisture resistant, too. Superior natural porcelain surfaces by one of the leading surface brands for architecture and design projects, Laminam will elevate even the simplest or smallest bathroom space into something opulent and spa-inspired, while offering peace of mind thanks to their extraordinary technical properties and excellent sustainability credentials.

Laminam's marble-look and stone-inspired superior natural porcelain surfaces are perfect for walls and floors, shower cladding, countertops and vanity units, creating an exclusive spa look and feel of natural marble or stone without the price tag and maintenance to match. Paired with chunky double vanity units with dual basins, calming and tranquil colour palettes in monochrome or earthy tones and a dash of nature by bringing the outside in with plants that thrive in humid environments, they can help to bring together even the most ambitious interior design. Laminam can also be used to create a statement wall behind a freestanding sculptural bath, a seamless flow between the



Laminam Surface - IN-SIDE Series - Pietra Piasentina Taupe



Laminam Surface - Ossido Series - Verderame

bedroom and ensuite or a luxurious walk-in wet room as an addition to a main family bathroom.

According to Trend Bible, "the importance of creating bath and shower spaces that promote positive wellness experiences for not only body but also mind and soul will increase, as householders will be actively seeking solutions that establish a balanced mood." It adds that a



Laminam Surfaces - IN-SIDE Series - Terra di Matera {back wall and flooring} and Terra di Saturnia {bath and shower wall}



Laminam Surface - I Naturali Series - Emperador Extra



Laminam Surface - I Naturali Series - Bianco Statuario Venato

desire for self-expression is also important, "which manifests in an increased willingness to explore and experiment with new eco-friendly materials, fresh colour combinations and statement structural pieces."

Porcelain surfaces are becoming an increasingly popular choice for the bathroom, as it's durable and hardwearing as well as water and stain resistant and very rarely scratches or marks. With Laminam surfaces, they can be used for everything from walls and floors to cladding and countertops. Its porcelain slabs can be used horizontally or vertically, as bookmatched patterns and are both stylish and practical with an authentic Italian look. It also allows for seamless continuity

with no visible joins, which is also ultra-hygienic, as there is nowhere for germs or bacteria to hide, also making cleaning between the minimal grout lines an easy task.

Laminam porcelain is incredibly sustainable, containing up to 60% recycled materials, while 100% of the water used is fed back into its production and 95% of its raw waste is recovered. Laminam also pursues sustainability in all assets of its business, along with undertaking various activities each year to stay true to its company values. The Italian manufacturer is in no short supply of certifications,

with an impressive collection that cements its promises and paves the way for its future vision. These certifications are third party proof of its unwavering commitment to sustainability, translating its objectives into real change. Its latest achievement being the extension of its EPD Certification* to all products. Moreover, Laminam has historically been involved in leading architectural projects around the world, which has now resulted in the company being a privileged partner for zero-impact projects.

www.laminam.com/gbr/en/

PISTORE MARMI

Italian Marble, Artisan Soul

Together with you, we have been
creating tailor-made luxury
projects since 1960



LIGHT AND DARK CONTRAST AS THE MAIN CHARACTER IN THIS LUXURY BATHROOM

Marble is an excellent aesthetic choice for spaces like bathrooms. Selecting the right marble can transform this area into oasis of comfort, luxury, and well-being.

The design of this suggestive and modern bathroom is based on the **contrast between light and dark, glossy and opaque surfaces.**

The contrast between the two colours enhances the balance created by the veins of both marbles. The shower has a strong impact and appears to be the visual fulcrum, thanks to the use of Grand Antique marble with the book-matched technique. The **Grand Antique** is a brecciated black marble from France, suitable for interior spaces, that gives a distinctive and unique touch to each surface. It stands out for the strong contrast of its black background interspersed with plays of white veins.

Inside the shower, there is a niche made with **Arabescato Corchia** marble, an element that creates balance and harmony with the entire space. Arabescato Corchia, is a fine-grained brecciated marble

extracted in the Monte Corchia basin, in Tuscany (Italy). It has ovule motifs with grey-blue veins that allow it to be described as a breccia with a white background with irregular veins. Its characteristics make it ideal for enriching any environment.

Every detail of this bathroom is a testimony to “**Made in Italy**” excellence. In this room, **Italian craftsmanship and marble** come together to create a truly unique environment. The book-matched surface is an ode to the harmony between human creativity and the beauty of nature.

Our vision and experience are at your service.

In **Pistore Marmi**, we merge artisan know-how with creativity and technological innovation, creating unique and exclusive design objects and tailor-made projects that enhance the properties and characteristics of natural and precious stones. Alongside the **artisanal approach**, we offer a **complete service for architects and interior designers**, ranging from consultancy with a problem-solving approach to support in design, selection of the most suitable marble, tailor-made creation of finished products, and assistance during the installation phase.



pistore marmi

● Projects ● Design ● Decor



Visit our website and Contact us to share your project!

www.pistoremarmi.com

info@pistoremarmi.com

Follow us on       @pistoremarmi

2024 INTERIOR DESIGN TRENDS FROM QUORN STONE

Quorn Stone, the UK's leading experts in premium natural stone and porcelain tiles, share their 2024 key interior design trends.

ZELLIGE STYLE TILES

Zellige is a style of tile that originated in Morocco, with the rich glaze and artisanal aesthetic more popular than ever. Quorn Stone's Zellige gloss metro tiles are perfect for bathrooms, shower rooms and kitchen wall tiles. The Zellige collection of gloss metro tiles offer a range of classic and contemporary shades from statement green to soft whites. These beautifully varied yet versatile Zellige tiles are taking over the interior space for 2024.

EARTHY HUES

For a calming and welcoming interior, earthy or nature-inspired tones are taking over for 2024. Hues such as tan, taupe, light pinks, and light greys are vital in interior schemes and these will continue to be big in 2024. Quorn Stone has an extensive collection of earthy toned tiles, including their Farini Mushroom Gloss Tiles and their Pastello Seashell Matt Metro Tiles, perfect for on-trend, stylish kitchens and bathrooms.





demista™

Clearly Perfect



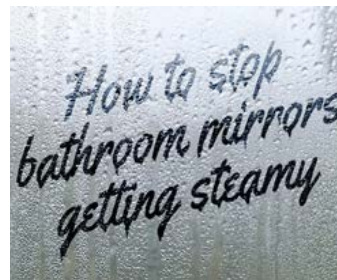
Reflecting high standards in bathroom design

In 1992 demista revolutionized the bathroom mirror market by introducing a heated mirror pad which adhered to the back of the mirror to prevent condensation from forming on the glass.

The inconvenience and frustration of these foggy mirrors was eliminated forever, giving you a clearly perfect steam free mirror without the need for time consuming wiping or costly cleaning products.

demista has been proven and accepted nationally and internationally and through its unique reputation and unblemished track record has been the number one choice for specifiers of mirror defoggers for over 26 years. A product range that is available in a large range of standard sizes to suit almost any mirror and bespoke sizes can be supplied if required.

In addition to being a trusted name for heated mirror pads, demista also offers electric underfloor heating solutions to offer clients a complete solution in bathroom design.



We've got everything covered!

demista products have been fitted in some of the worlds most prestigious properties and hotel developments, including The Burj Al Arab, The Royal Atlantis, Fairmont Dubai, The Intercontinental O2 and other high value developments in London

demista the original and trusted name for mirror heat pads and underfloor heating solutions throughout the world.

To find out more please visit www.demista.co.uk

📍 Telford Road
Glenrothes
Fife KY7 4NX

T: +44 (0)1932 866 600

F: +44 (0)1932 866 688

E: sales@demista.co.uk

Visit us online
demista.co.uk

HIGH-QUALITY CRAFTSMANSHIP FROM VOGUE UK

The Vogue UK electric range offers high-quality craftsmanship and a stylish design, making a great addition to any space that requires additional heating for towels or other purposes.

Eco Modular Bars from Vogue UK are a low-voltage, practical and stylish solution for heating towels and providing warmth in any space. The bars are available in two widths in either polished or brushed stainless steel and matt black to suit your preferences and decor.

One of the benefits of the Vogue UK Eco Modular Bars is that they are powered by SELV (Safety Extra Low Voltage) 12v connection, making them safe and energy-efficient. This also means that they can be installed in areas where it may not be practical to connect to a central heating system, such as a bathroom or a laundry room.

Vogue UK Eco Modular Bars can be installed as singular units or linked together to create multiple heated bars, providing more flexibility in terms of how much heat is required and how much space is available for installation. In addition to the Eco Modular Bars, Vogue UK offers a wide range of other products, including heated towel rails, designer radiators, and other heating solutions. The company's products are designed to meet the needs of every designer, with a range of finishes and styles to choose from.

Vogue UK is a leading manufacturer of heated towel rails, designer radiators, and accessories, with a commitment to quality craftsmanship and innovative design. Established in 1990 in the West Midlands, Vogue UK has been at the forefront of the industry,



offering a range of products that combine design with functionality.

If you require a unique design, Vogue UK's designers can create a bespoke product to your exact specifications. With over 30 years of experience in creating towel rails and designer radiators, Vogue UK has built an extensive portfolio of designs and can offer a bespoke service, ideal if you're looking to create an authentic period look or match an existing design.

Vogue UK is a reliable and trusted brand that offers high-quality,



stylish, and practical heating solutions for any space. Whether you're looking for a heated towel rail, designer radiator, or other heating product, Vogue UK is sure to have a product that meets your needs and exceeds your expectations.

 **VOGUE UK**
TOWEL WARMERS & RADIATORS

Vogue UK, Strawberry Lane, Willenhall,
West Midlands, United Kingdom, WV13 3RS

+44(0) 1902 387000 | sales@vogueuk.co.uk

Facebook - **Vogue (UK) Ltd**

Twitter - **@vogueukltd**

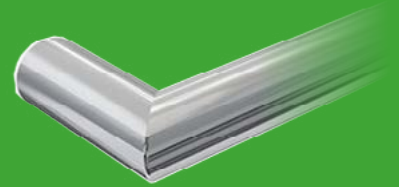
Instagram - **@vogue_uk_ltd**

LinkedIn - **Vogue UK**

Pinterest - **@vogueukltd**



Square bar with
mitred corner



Round bar with
mitred corner

Eco Modular Bars

Low Voltage Towel Warmer Bars

- Supplied with quick connections and 6m cable as standard
- Available in matt black and polished stainless steel
- Available in 500mm and 600mm
- Can be singular or linked to create multiple heated bars
- Energy efficient

Low Voltage 12V Connection
SELV (Safety Extra Low Voltage) technology

vogueuk.co.uk



VOGUE UK
TOWEL WARMERS & RADIATORS



Commanding elevated and breathtaking views of the idyllic St Ives harbour, the Tregenna Castle Hotel and Resort covers 72 acres and presents a go to location for tourists and families wishing to experience the delights of sea and countryside from within an attractive mix of traditional and contemporary settings.

Tregenna Castle Village Development

VICAIMA ADDS TO SPECTACULAR VIEWS AT PREMIER CORNISH RESORT

The hotel complex itself is renowned throughout the area and beyond UK shores, having been the location where US president Joe Biden stayed during the G7 summit in 2021. Now the resort looks to the future by expanding its portfolio with the help of Tregenna Homes, in the building of a group of select properties for private sale.

Castle Village, as the development is known, provides a selection of 2 and 3 bed homes built to the highest design and environmental standards. With an emphasis on natural affinity and sustainability, Vicaima were approached by leading merchant partners Jewson of Hayle, to provide doorsets that did justice to this ethos and embodied natural design excellence.

The Vicaima Easi-Fit door kit system was selected, which consisted of FD30 and third-party accredited fire performance options and included over height door dimensions in many areas. The kits included a striking door design with the use of Heritage Oak horizontal veneer, combining decorative grooves and contrasting black ironmongery. FSC certified



Aerial view of the Tregenna Castle Resort

Heritage Oak from Vicaima's Essential range presents figurative knots and distinctive woodgrain configurations that reflect all the much-loved characteristics and charm of natural wood veneers.

Taking full advantage of Vicaima's design flexibility, door faces were further enhanced by the inclusion of 4 horizontal 'V' shaped grooves in a tasteful light brown stain and contrasted by the specification of black ironmongery to complete the ensemble.



Heritage Oak finish with PG4H 'V' Groove in light brown.



Vicaima Easi-Fit Doorkit with Heritage Oak door.

Easi-Fit doorkits and the Heritage Oak finish are just two examples of fresh and imaginative design and performance options offered by Vicaima.

For more inspiration, download a copy of the Vicaima Interior Door Selector, Visit the Vicaima website www.vicaima.com, contact info@vicaima.com or Tel: **+44 (0) 1793 532333**

Now more than ever, we need to look to renewables sources for our heating. Self-sufficiency without the grid is the only way forward.



STYLE AND PERFORMANCE

With gas and electricity costs at an all-time high, it is vital that any consumer looks to be more ecological to avoid the economical increases we are facing! Let's avoid relying on an electricity source and look to our past and rely on a whole home heating solution fueled purely on locally sourced wood. Additionally, our Ecco Stoves emit less particulates than that of an electric generation currently!

Our wholly British made Ecco Stove is a ceramic wood burning stove that is able to heat a 4-bedroom house from as little as 7kg of locally sourced wood (model dependent). Made with largely from Silicon Carbide the stove, Ecco Stove is

unique in design and ability, one stove is able to heat as much as the whole home without the need for radiators and ducting. Current Eco Design Standards 2022 stoves are the cleanest in combustion ever. Our Ecco Stove range more satisfies these standards! Not only do you benefit from more ecological whole home heating, we have up to 5 models to choose from and a broad range of beautiful colour choices. We have an extensive range of optional extras to choose from to make your Ecco Stove fit your lifestyle and needs.

Don't rely on monopoly industry prices, an efficient wood burning stove can interface with existing

new technology heating systems whilst maintaining home comforts and indeed heat the whole home without the support of other technologies or reliance on the grid. We implore any consumer to challenge the norm of gas central heating and look for a renewable, self sufficient and more economical solution to heating their homes!

Don't take our word for it, get in touch today to learn more about how an Ecco Stove can change your home.

ECO STOVE

Find out more on our website: www.eccostove.com
Email sales@eccostove.com or call **01527 857814** to start
your journey to self-sufficiency.

ECO STOVE

Eco Design 2022
EMISSIONS READY





- 🔥 Heat distribution up to 280m² area around the stove (model dependent)
- 🔥 Self sufficiency for your home, lifestyle and comfort
- 🔥 Slow heat release for up to 12 hours after the fire has gone out
- 🔥 FREE heat plan estimate showing achievable temperatures throughout your home
- 🔥 Silicon Carbide construction
- 🔥 10 year guarantee

Ecco Stove Ltd ®

+44 (0) 1527 857814
sales@eccostove.com



 Ecco Stove

 Ecco Stove

 @eccostove

Like | Follow | Subscribe

If you would like to book a quotation, get further information, see a live demonstration model or order your Ecco Stove® please contact us!

THE CHRONICLES OF A FURNITURE INSTALLATION

WHEN FURNITURE INSTALLATION MET INNOVATION:
SPRING BOX'S SOLUTION TO THE 4TH-FLOOR CHALLENGE.



In Central London, furniture installer Spring Box recently encountered a unique challenge that showcased their commitment to ingenious solutions and impeccable service. The client's fourth-floor residence became a logistical puzzle when last-minute property maintenance left the staircase impassable for their oversized sofa. Undeterred, Spring Box booked a furniture hoist on the spot, swiftly attaching the sofa and lifting it to the fourth floor. This swift thinking and dedication to customer satisfaction highlights what sets Spring Box apart in the world of furniture installation. They turn challenges into opportunities, ensuring a seamless delivery and installation experience. Spring Box's adaptability and problem-solving make them a trusted choice for clients who demand top-notch service, even when it involves hoisting a sofa up four flights of stairs in Central London.



The founder of Spring Box has taken the industry by storm with his attention to detail on accountability and service.

He thinks these two core values are what sets them apart from their competition and explains below why it's so important to them.

"To me, it's a no-brainer when it comes to high-end interior design furniture installations, you cannot cut corners, you cannot take chances and our customer's reputation is always on the line. Stakes are always high and every job needs to be treated as though we are paying for this ourselves. Something changes when you pretend to handle goods as if they are your own. This is why we have such a close bond with our clients. As soon as "it's not our problem" that's when the wheels start to come off. Our team are trained to think differently to the status quo movers and humpers out there and we take pride in delivering a lasting impression after we have walked away."

"As a customer when we started using Trello it was an instant game changer for us. Coupled with Spring Box's expertise, we cannot go without it now." - Jennifer Wilson

Are you an interior designer or a furniture company? Are you sick of your current problems with installations? Book in a call with us.

SPRING BOX
The FF&E Installation Experts

0203 737 2571 | www.springbox.london

SPRING BOX

The FF&E Installation Experts



Your Go-To Partner for Flawless Interior Design Installations.

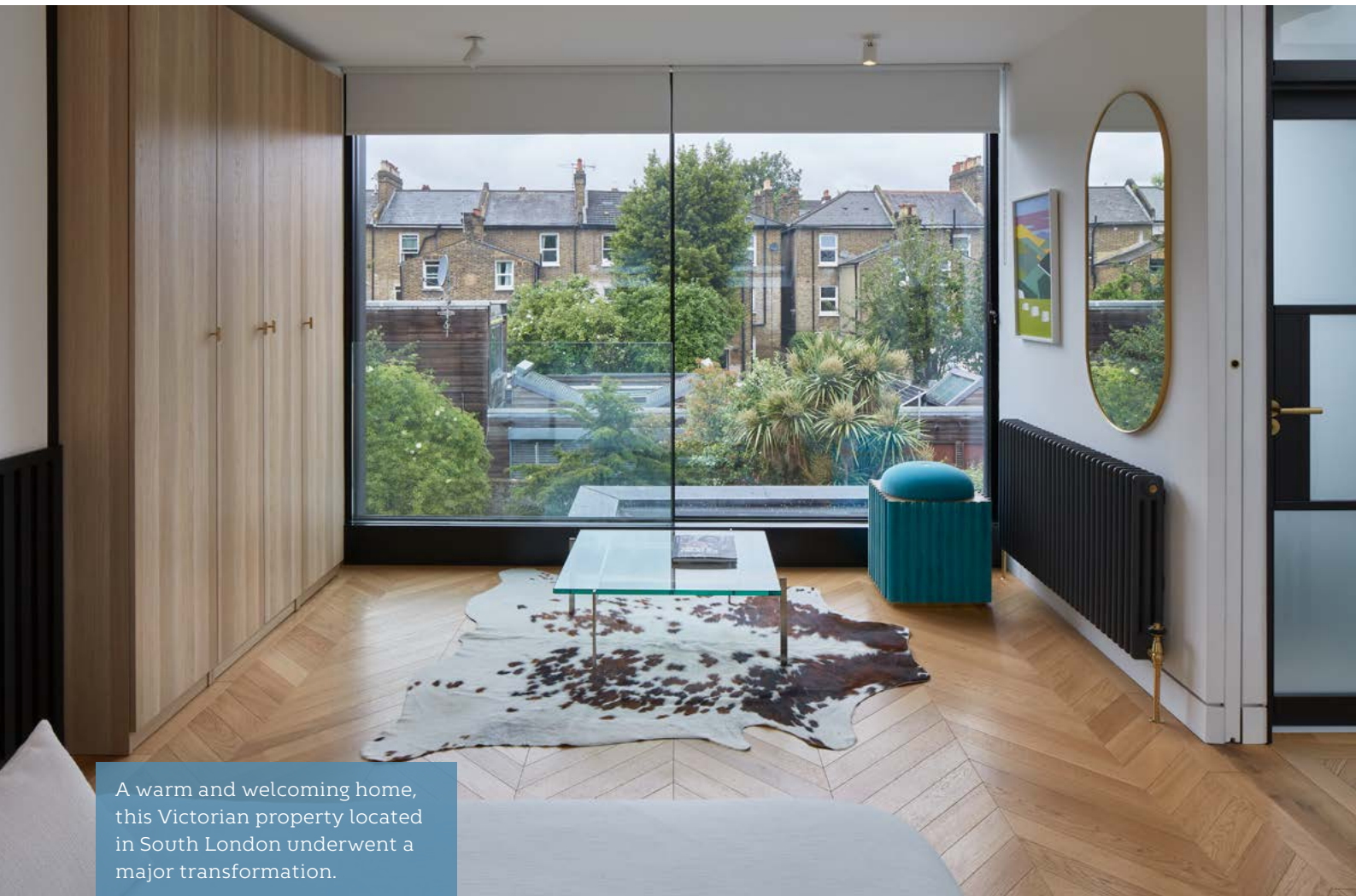
Our experienced professionals provide stress-free furniture, fixtures, and equipment installation, ensuring your project is in great hands. Trust us to bring your vision to life with unmatched excellence in the industry.

STORAGE | DELIVERIES | INSTALLATIONS | FF&E | PICTURE HANGING | QUALITY CHECKING

0203 737 2571 | INFO@SPRINGBOX.LONDON | WWW.SPRINGBOX.LONDON

UNIT 9, FALCON BUSINESS CENTRE, 14 WANDLE WAY, MITCHAM, LONDON CR4 4FG

CONTEMPORARY MEETS TRADITIONAL LONDON HOUSE CASE STUDY



A warm and welcoming home, this Victorian property located in South London underwent a major transformation.

The client chose a combination of beautiful wood flooring designs from Havwoods throughout the property to achieve a sleek yet eye-catching aesthetic. From the new ground floor extension to the contemporary colour palette that runs throughout, the result is a bright and spacious home that is perfect for modern living.

Two different Havwoods products were chosen for this project, the Pallido Prime Chevron and Pallido Select boards. These surfaces were

installed in the loft studio on the top floor of the property, including the bedroom and hallway.

The natural light in the property beautifully accentuates the varied tones and textures found across Havwoods' flooring, bringing the surface to life. In the living room, the homeowner continued the honey tones of the flooring with a bespoke herringbone design. This is further complemented with the bouclé cloud-like sofas and neutral toned accessories.

The warmth of the wood perfectly enhances the monochrome colour palette and minimalist décor, working in harmony with the abundance of texture in the form of black panelled walls, bouclé headboard and tactile throws and pillows. The Chevron boards, light grey walls and black detailing carry through into the hallway and onto the staircase, creating a cohesive flow between the rooms.



The homeowners were keen to incorporate a Chevron design, one that was eye-catching but timeless. They decided to use two different products to add further interest to the look, which fortunately we were able to match in the same finish



and appearance. The result was understated and timeless.

With an array of flooring to perfectly complement any home, Havwoods' varied collection combines the very best in style



and functionality, offering both traditional and contemporary designs in a range of colours and patterns. The dedicated team works closely with every customer to ensure every detail of their project is met.



www.havwoods.com/uk | info@havwoods.com | +44 (0)1524 737000

Photography Credits: Calvert Studios

NEW ALTRO ILLUSTRATION DRAWS INSPIRATION FROM THE NATURAL WORLD

Altro continues to innovate with the launch of Altro Illustra™ - a class-leading safety floor with stunning natural aesthetic designs and the option to go adhesive-free to save carbon, money and time.



The latest development from Altro draws inspiration from the natural world with a range that delivers visual texture and softness yet provides all the performance characteristics you'd expect from the long-established surfaces innovator and authority on safety flooring.

With sustainability ever-higher on the agenda, Altro Illustra is available in both adhesive-free and traditional adhered options, providing versatility and flexibility for various installation requirements.

Whichever option you choose, Altro Illustra is engineered to offer superior slip-resistance, minimising the risk of accidents. It comes with Altro's 'One in a Million' slip risk for life guarantee - proven sustained slip-resistance for the life of the floor. It provides excellent underfoot protection, even in wet and high-traffic areas, enhancing safety for everyone who walks on it, so with Altro Illustra, you can ensure the safety, visual appeal and sustainability of your large spaces.

Whether you're creating an inviting learning environment, a comfortable care facility, an attractive retail space or a welcoming hospitality venue, Altro Illustra is the perfect flooring solution to bring your vision to life. The floor is available in three distinct pattern groups with visual textures to bring depth to your designs: natural stones, modern textiles and muted minerals. These designs offer a harmonious blend of

style and functionality with nature-inspired textures and softness to help create and enhance feeling of wellbeing within spaces.

If you are looking for excellent sustainability credentials, opt for Altro Illustra adhesive-free for a diverse selection of modern and flexible designs, coupled with many more benefits. With Altro Illustra adhesive-free you can save up to 50% embodied carbon and up to 35% in cost, making it the perfect choice where sustainability and price matter most.

Where downtime is a concern, Altro Illustra adhesive-free saves up to 50% installation time compared to adhered safety floors. It is ideal for busy public spaces where disruption needs to be minimal, plus there are no associated adhesive odours. Using Altro's award-winning adhesive-free installation method, it can be welded and walked on the same day, and at the end of its life can be removed easily, allowing it to be reused or recycled.



In addition to its sustainability, style and safety features, Altro Illustra offers easy maintenance and durability, incorporating Altro Easyclean™ technology. The floor is designed to withstand heavy foot traffic and resist stains, making it suitable for busy environments. Its hygienic properties make it an excellent choice for care homes and healthcare facilities, where cleanliness is of utmost importance.

Altro Illustra is available in 13 colours, across 3 designs: natural stones, modern textiles and muted minerals. It provides superior slip resistance (PTV > 36, R10) for the life of the flooring and comes with a 10-year guarantee.

Altro Illustra adhesive-free is available in 18 colours across the 3 designs and provides sound reduction of 14dB as well as superior slip resistance (PTV > 36, R10) for the life of the flooring and comes with a 10-year guarantee.



To learn more about what Altro Illustra can offer or to order a sample, visit www.altro.com

LIBERTY[®]

FLOOR SOLUTIONS



XPRESSIONS 8/32 LAMINATE

URBAN 55 NEO LVT

ROCK 40 ACOUSTIC SPC

PUZZLE 70 & HD36+ VINYL

Experience the pinnacle of luxury and durability with the Liberty Floor Solutions brand. Whether you are looking for a Laminate, LVT or SPC product, the Liberty brand has a range sure to suit your needs. Upgrade your space with Liberty Floor Solutions 'Click Fit' Xpressions 8/32 Laminate, 'Dryback' Urban 55 Neo LVT, 'Uniclic' Rock 40 Acoustic SPC or 'Loose Lay Tile Lock' Puzzle 70 & HD36+ Vinyl and elevate your surroundings with style, comfort, and resilience.

Birch Distribution
www.birchdistribution.co.uk | 0114 243 1230

Provincial Floorcoverings
www.pfl.ie | 06 353 61 227100

STS Flooring
www.stsflooring.co.uk | 0345 899 1000

PRESENTING PULLCAST'S **NEWEST DUORUM HARDWARE FAMILY**

This year, PullCast has unveiled an assortment of new hardware designs to the public. These novelties exhibit the contemporary and detailed essence that the brand is best known for. While some are extensions to a few of PullCast's most beloved hardware families, others bring an original perspective to decorative hardware, including the awe-inspiring Duorum series.



LANDSCAPE-INSPIRED HARDWARE

The Duorum Hardware family sets itself apart due to its distinctive and bold form. Its inspiration is motivated by the remarkable Douro Valley landscape in Porto. To faithfully reinterpret the valley, PullCast's team of designers resorted to undulating features to symbolize the in-depth scenery of the landscape. It is a stand-out series with its own set of characteristics, thought out as a new way of decorating with sublime and meaningful details, seamlessly bringing together aesthetics and functionality.

THE INSPIRATION: THE DOURO VALLEY

The Douro Valley is one of the most outstanding landscapes in Portugal. Classified as a World Heritage Site, this picturesque region certainly does not go unnoticed. This location is best known for its fertile fields, rich history, and tradition, replete with enthralling spaces throughout, from terraced vineyards to charming villages. PullCast wanted to reproduce the cultural importance of this beautiful location into an exclusive hardware family, illustrating its flowy and curved nature and, above all, its striking visual effect.



A NEW MAJESTIC ADDITION TO THE EARTH COLLECTION

With all of its majestic and natural elements, Duorum had to be a part of PullCast's Earth collection. This series resulted from a constant pursuit to find the most distinguished forms, shapes, and textures in nature, and the Douro Valley goes hand-in-hand with the fundamentals of this collection. PullCast pays tribute to this cultural site through this daring hardware family. It will add intricate layers of detail to interiors, offering a more modern and whimsical decor spin.

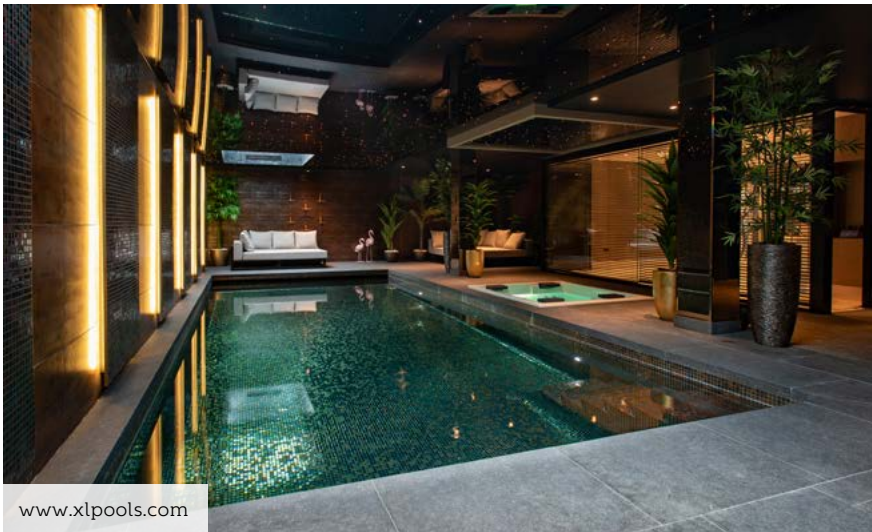
VARIOUS HARDWARE MODELS

The Duorum series comprises seven hardware designs: two door pulls, two cabinet handles, two door levers, and one drawer handle. All designs share a similar aesthetic but have a few distinctive features that set them apart, whether concerning size or a more clean-shaped structure in parts. One can easily match these different models in the same environment or home, and it will still flow masterfully decor-wise. Say, for example, use the door levers in between rooms and equip all furnishings with drawer and cabinet handles for a cohesive look.

These hardware pieces are brass made and come in an aged brass finish. Nevertheless, they are also available in polished and brushed brass options. All in all, these sculpted designs can act as an innovative complement to any division, from an entrance statement door pull to a unique bathroom furniture accessory.

www.pullcast.eu

DESIGNING AND BUILDING SWIMMING POOL, SPA, AND WELLNESS FACILITIES INTO YOUR PROJECTS



www.xlpools.com



www.cresta-leisure.co.uk

Another good starting point is **SPATEX**, the only dedicated international spa, pool and wellness show in the UK, which is free to attend and takes place on 6-8 February 2024 at the Coventry Building Society Arena, Coventry. www.spatex.co.uk

A swimming pool, inground spa, and wellness suite are luxurious wet leisure additions to any home or commercial project.

A space to exercise and improve health and wellbeing, for domestic clients, creating a social space and for commercial clients, it's a fantastic feature to set themselves apart from the competition and help drive increased revenue.

Your clients will have ideas about how their new wet leisure project should look, its features, and how it will improve their lifestyle or business; there are many things to consider. The specialist advice and assistance of a SPATA member in the design process can help support you and bring your client's ideas to life, practically and cost-effectively, and streamline the project to ensure that the timescales and budgets are met with the overall assurance of quality.



www.originpools.co.uk

With over 60 years of experience, SPATA works with companies involved in building and installing swimming pools, spa pools and wellness with members working to the industry standards set by SPATA. Plus, every member agrees to work according to the SPATA code of ethics, which adds peace of mind for your client's future ownership of their new pool, spa, and wellness suite for years to come.

SPATA provides resources for businesses incorporating wet leisure products into their building projects, with a list of members nationwide and a register of commercial contractors. SPATA also has an Allied Trades membership category specifically for consultants, designers, engineers, architects, service organisations, and others interested in the pool industry.

To learn more about SPATA, get design inspiration and connect with one of our members, visit www.syata.co.uk.



Relaxation, Health & Wellness.....



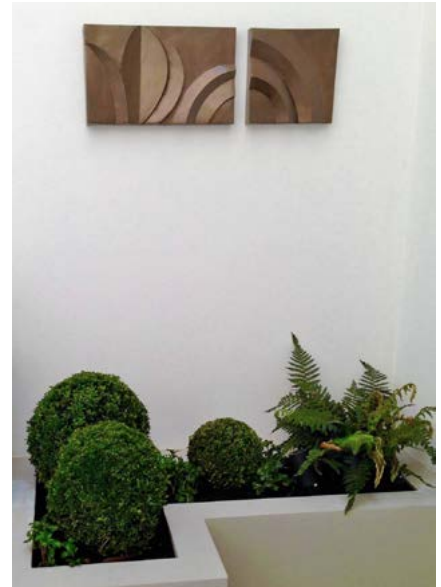
- > For over 60 years, SPATA has been the trade association for the swimming pool industry
 - > The association has an internationally respected reputation for quality
 - > Members work to industry standards and abide by a code of ethics
 - > SPATA works with other industry bodies to set standards
 - > Register of members - pool contractors and associated trades nationwide is available
 - > Expert technical advice for both members and customers
 - > Dispute resolution, including a stakeholder facility
 - > Membership categories for consultants, designers, engineers, architects, service organisations, and other businesses
 - > SPATA promotes SPATEX, the only UK pool, spa and wellness exhibition
- www.spatex.co.uk

To find out more about how SPATA can help you, or your company locate SPATA members, please visit;

www.spata.co.uk



BOLDSTONE SCULPTURE



Founded in 1998 Boldstone Sculpture has worked with local and international interior and garden designers, architects and property developers. We have worked on large scale projects as well as small individually created commissions for private clients.

Boldstone has created their own original range of designs primarily focusing on wall sculptures with the name of Boldstone Sculpture. We are now in the process of extending our range of art objects to include printmaking as well as photographic prints, high quality Giclee prints and paintings on canvas and board with bronzes in the pipeline!

Inspiration for our artworks comes from the observation of pattern in nature and the interpretation of pattern in the interaction of light and shadow, colour, line, form and texture. Themes are developed using differing mediums and materials expressed in sculpture, drawing and painting.

We like to think that every sculpture and artwork produced by Boldstone focuses on craftsmanship, attention to detail and experimentation with a combination of skill and artistic narrative.

Our artworks are handmade using different materials which allow for individual variation such as a polished sheen, rustic patina, pigments and metallic finishes.

Boldstone's wall sculptures and artworks are adaptable to a multitude of settings, whether that be a modern urban loft, a chic office space, a tranquil residential living room or a grand hotel lobby and spa. They have the ability to transform any environment, adding a touch of elegance and intrigue, leaving a lasting impression on those who encounter them.

Boldstone is committed to sustainability and wherever possible uses eco-friendly materials. We are dedicated to the responsible use of resources and aim to create art that not only enhances spaces but also respects the environment.

Boldstone thrives on bringing a client's unique vision to life. We collaborate closely with clients to create bespoke wall sculptures tailored to specific spaces, themes or concepts. Whether a signature piece for a corporate headquarters or a series of sculptures for a luxury residence we create drawings and storyboards to help work with you to realise your idea.

If you are interested in a private viewing or a presentation or discussing a specific project please email us to start the conversation.

We have been privileged to work with many clients at all scales over the years and enjoy participating in creating artworks suitable for public and private spaces, gardens and interiors.

Our studios are based just outside Bath in Somerset.

www.boldstone.co.uk



Boldstone

art inspired by nature

A : Boldstone Sculpture, Court Essington, Midford, Bath, Somerset, BA2 7BX

E : info@boldstone.co.uk | W: www.boldstone.co.uk | M : +44 (0)7766763566

In January this year the Mayor of Erewash opened the new Community Arts Centre: Ilkeston Contemporary Arts, better known as ILKON.

It is housed in a beautifully repaired, restored and repurposed 1936 Methodist Church. ILKON is managed by an artist-in-residence who engages with the local community to organise a series of events, exhibitions, performances and talks throughout the year.

ILKON is not a made-up word. It is Old English meaning “each one or everyone” and was used by Chaucer in his “Second Nun’s Tale” about the life of Saint Cecilia who coincidentally is depicted in one of the Church’s magnificent stained glass windows.

The craftsmanship and fabric of the Church has been respected and enhanced with additional insulation in the roofspace which combined with solar panels and a heat pump has reduced carbon emissions by 75% and a model for sensitive sustainability.

Ilkeston station is on the Nottingham to Sheffield/Leeds line connecting ILKON to a large catchment of university towns. ILKON has a programme designed for “each one or everyone”. ILKON’s first Short Film Festival was a great success. The winning entry by local filmmaker Jordan Leeming was an emotional story about male depression.

The best documentary by Callum Roome was a series of moving accounts entitled “Public Displays of Affection” in the LGBTQIA Community. School groups use the space as an extension of their classroom activities whilst music, theatre groups, flower arranging, poetry groups ensure the space is always active. The aim is to cater for all whilst demonstrating the importance of creative contemporary art.

A major exhibition in 2024 is on the subject of INDUSTRY. Ilkeston’s motto is Labor Omnia Vincit (Work Conquers All) but most of the traditional industries have gone. The exhibition includes evocative images of the coal mines, the steelworks, the Raleigh bike



HEART OF ILKESTON

Architect Chris Williamson has transformed a derelict church into a vibrant community arts centre in his home town in Derbyshire.



Above: St Cecilia, featured in one of the many beautiful stained glass windows. **Left:** Gallery interiors.

Right: ILKON’s exterior with its 2m diameter mirror ball suspended high in the bell tower acts as a Gatsby-esque green beacon throughout the town.

ILKON has formed strong links with local universities and is championing the amazing emerging talent in the East Midlands. The current artist-in-residence is a recent graduate of DeMontfort University and some of her work and those of her colleagues is on show at ILKON and will also be exhibited at the Manchester Art Fair in November.

Undergraduates on Fine Art Courses throughout the East Midlands use the gallery for curating and exhibiting and Architecture students are working with ILKON and the local Council, studying ways to improve the urban environment and are looking at the possibilities for a Sculpture Trail from the nearby station to the town.

factory and the laceworks, whilst looking forward to the new jobs which are replacing those now moved elsewhere or no longer viable. With the inevitable rise of AI (the subject of another later exhibition) ILKON demonstrates that we will need creativity and imagination to stay one step ahead of technology and other disrupters. The presence of an artist-in-residence allows the community to engage with creating and inventing.

ILKON has won a number of National and International Awards for Architecture, Renovation, Interior Design and Brand Identity but more importantly has received numerous compliments and repeat visits from an engaged community with many ideas and suggestions which will see the venture thrive as an important part of creativity in the East Midlands.

ilkonarts.com

instagram: @ilkestoncontemporaryarts



ILKON



ILKON
LIVING CONTEMPORARY

HEANOR ROAD, ILKESTON, DERBY
ILKESTONCONTEMPORARY.COM

SUPERDWELL UNVEILS 2024'S TOP INTERIOR DESIGN TRENDS - **ACCORDING TO AI**



Interior design moves fast, so keeping on top of the latest trends is always a challenge.

Superdwell, the AI interior design agency, has solved this problem in a smart way: they collated data from their bank of over fifty expert trained Artificial Intelligence interior designers and have now revealed the trends that AI believes will be influencing interior design in 2024.

Read on to find out more about the home decor trends that AI predicts for next year.

2024 AI INTERIOR DESIGN

TREND #1

SOFT FORMS

In a shift from the angular, boxy designs that dominated interiors for some time, 2024 heralds the rise of soft forms. This trend is about embracing the fluid, the curvilinear, and the organic. As we witness a renaissance of curves and arches in interior design, there's a palpable feel of returning to nature and simplicity.

One of the most evident illustrations of this trend is the resurgence of archways in modern homes. Traditionally rooted in Roman architecture, arches have a historical and timeless essence. Incorporating arches, whether in doorways or as a design element in wall décor, offers a soft transition between spaces. They effortlessly turn ordinary doorways into elegant passages.



Soft Forms

Furniture, too, embraces this change. Gone are the straight-backed chairs and sofas. In their stead, we see couches with rounded edges, oval coffee tables, and chairs that seem to hug the sitter. This return to softer forms doesn't just influence the visual aspect but also impacts functionality. Curved furniture often allows for better flow in a room, making movement more intuitive and spaces feel larger.

Decor items follow suit. Vases, mirrors, and even light fixtures have adopted rounded, fluid shapes,

echoing natural forms. Think of a pebble-shaped mirror or a pendant light that mimics the gentle droop of a flower bud.

These fluid shapes often evoke feelings of comfort, safety, and relaxation. They eliminate the harsh juxtapositions that sharper lines present, giving rooms a harmonious and unified feel. There's also a psychological element at play. Curves and soft forms are often perceived as more welcoming and nurturing, resonating with our innate love for nature and its organic, irregular patterns.

2024 AI INTERIOR DESIGN TREND #2
BIOPHILIC DESIGN

As urbanization continues to surge, the inherent human longing for nature is driving one of the most influential design trends of 2024: Biophilic Design. This isn't just a trend; it's a response to the increasing disconnect people feel from the natural world, emphasizing a symbiotic relationship between nature, design, and humanity.

Biophilic Design goes beyond merely adding a plant to a room. It dives deeper into the architectural and design processes, strategically integrating natural elements into built spaces to create harmonious and health-promoting environments. Natural light, for instance, plays a significant role. Large windows, skylights, and open spaces are designed to let sunlight flood interiors, syncing indoor environments with the external natural rhythms.

Use of natural materials is another cornerstone of this trend. Woods, stones, and other raw materials aren't just chosen for their aesthetic appeal but also for their tactile, sensory-rich experience. These materials not only ground the design in nature but also serve as a testament to sustainability. As concerns about the environment grow, the selection of ethically-sourced and sustainable materials in interior designs is paramount.

Moreover, the integration of indoor plants is intensified in biophilic interiors. Plants become central design elements, purifying air, and offering psychological benefits. Sustainability is intricately tied to Biophilic Design. As designers and homeowners alike become more ecologically conscious, there's a push towards creating interiors that are not just inspired by nature, but also kind to it.



Neo-Neutral Colors

2024 AI INTERIOR DESIGN

TREND #3

NEO-NEUTRAL COLORS

As the curtain rises on 2024, the realm of interior design is set to embrace a harmonious blend of colors that find their roots in both modern aesthetics and nature's embrace. The color palette is evolving, signaling a confluence of the timeless allure of neutral shades with the raw, organic touch of earthy tones.

Neutral colors, with their unmatched versatility, have always held a significant place in interior design. The color trend leans towards neo neutrals, which are fresh, grounding, and inherently calming but possess a contemporary edge. These colors are subtler, more sophisticated, and perfectly tuned to the modern homeowner's desires, infusing spaces with a sense of peace and elegance. Imagine soft grays, and gentle off-whites that provide the perfect canvas for various design elements.

Complementing the understated charm of neo neutrals are the rich and evocative earthy tones. Drawing inspiration from the biophilic design movement, colors such as terracotta, deep browns, and soothing beiges are

set to become the stars of many interiors. These hues, deeply rooted in the landscapes we love, bring tranquility to spaces. They weave a narrative of authenticity, warmth, and raw beauty, transforming homes into nurturing sanctuaries.

When combined, neo neutrals and earthy tones offer an exquisite balance, creating interiors that are both modern and comforting. The resulting spaces become serene sanctuaries, grounded in nature and tinged with contemporary elegance. It's a harmonious blend, celebrating the past's timeless charm while looking forward to the future's innovative spirit.

2024 AI INTERIOR DESIGN

TREND #4

RESPLENDENT ACCENT COLORS

In addition to the prevailing trend of neo neutrals, 2024 is set to embrace a luxurious color palette that promises to elevate interiors to new pinnacles of sophistication. These resplendent hues will take center stage, either as accent colors or intricate details, complementing and enhancing the muted backdrop of contemporary neutrals.

Classic blue, often referred to as a timeless hue, resonates deeply with a sense of calm and stability. It embodies the vast expanse of the

twilight sky and the deep waters of the ocean, bringing an element of tranquility and reflection into homes. When used in interiors, this shade instills a sense of trust and peacefulness, making it ideal for spaces meant for relaxation and introspection.

Complementing the cool tones of blue is the ever-enchanting palette of greens. Rooted in nature, green shades epitomize growth, renewal, and vigor. The year 2024 places a strong emphasis on these green hues, with a special nod to their ability to bridge the gap between the indoors and the lush world outside, cultivating spaces that breathe and rejuvenate.

The design sphere of 2024 also welcomes the dramatic allure of jewel tones. Think rich emeralds, deep sapphires, and mesmerizing amethysts. These shades are reminiscent of treasured gemstones, and when introduced into living spaces, they exude an aura of luxury, drama, and opulence.

Additionally, moody luxurious palettes are making waves, with sumptuous hues like rich burgundy, navy blue, and dark emerald taking center stage. These colors, intense and evocative, imbue interiors with a sense of depth, warmth, and sophistication. They transform ordinary spaces into plush sanctuaries that speak of elegance and affluence.

2024 AI INTERIOR DESIGN

TREND #5

OPEN PLAN EVOLUTION

The open-plan design, celebrated for its spaciousness and seamless flow, is set for a transformative phase in 2024. Born out of a desire to create expansive, integrated living spaces, the classic open-plan approach has been embraced by many modern homes. It epitomizes unobstructed spaces that encourage family interactions and uninterrupted lines of sight.

Resplendent Accent Colors



However, as lifestyles change and the lines between work, leisure, and relaxation blur, especially in our ever-increasing work-from-home era, the need for distinct spaces within the overarching open plan has emerged. It's not about reverting back to boxed rooms and closed doors but adapting to the multifaceted needs of today's inhabitants.

Future-forward interior designs will focus on infusing subtle demarcations within these spaces. This can be achieved by cleverly using decor elements, like statement-making area rugs or distinctive lighting fixtures, to signify different functional areas. Color gradients or tonal shifts can act as soft borders, guiding inhabitants from one 'zone' to another, without compromising the sense of openness.

Another game-changer is the use of multifunctional furniture. Movable partitions, foldable desks, or modular seating arrangements can be reconfigured based on the occasion, whether it's an intimate family dinner or a work-related video conference.

The evolution of the open-plan design is all about ensuring flexibility while enhancing functionality. This newfound dynamism in open-plan living ensures that spaces are adaptable, versatile, and perfectly aligned with the fluidity of contemporary lifestyles.

2024 AI INTERIOR DESIGN TREND #6 TECHNOLOGY INTEGRATION

In the 21st century, the seamless fusion of technology and interior design is not just a luxury but an essential component of modern living. As the boundaries between our digital and physical environments blur, the interior design landscape of 2024 is set to be revolutionized by advanced technology integration.



Soothing
Atmosphere



The realm of interior design is experiencing a paradigm shift, ushered in by the innovative integration of technology. This fusion is reshaping our living spaces, pushing boundaries, and elevating our daily experiences, emphasizing both aesthetics and functionality.

Central to this transformation is smart lighting. It transcends mere illumination. Advanced smart lighting systems, equipped with sensors and AI, can adjust according to the natural circadian rhythms of occupants, changing intensity and hue to mirror different times of the day. Whether it's the warm golden glow of a simulated sunset or the invigorating brightness that mimics a sunny day, lighting now responds to, and even anticipates, our needs.

Additionally, smart furniture is carving its niche. Consider the elegance of a dining table with built-in wireless charging or the convenience of voice-activated window blinds. These pieces exemplify how design and tech can coexist, maximizing comfort without cluttering space.

2024 AI INTERIOR DESIGN TREND #7 SOOTHING ATMOSPHERE

In the ever-accelerating tempo of the modern world, our homes are increasingly evolving into tranquil retreats from external commotion.

Central to this serene landscape are pastel colors. These hues, with their inherently soft and muted character, are taking precedence in home palettes. Pastels, ranging from gentle lavenders to subtle

mints, possess an innate ability to calm the mind and soothe the senses. They impart a dreamy quality, reminiscent of early morning skies or the tender petals of spring blooms. When integrated into interiors, these colors act as a balm, reducing stress and creating a haven for relaxation.

But it isn't solely about the color palettes. The very ethos of a 'soothing atmosphere' extends to the incorporation of wellness items in our living spaces. As mental and emotional well-being becomes a prime focus, items that foster these feelings find their rightful place in homes.

Aroma diffusers, for instance, are gaining prominence. With a few drops of essential oils like lavender or eucalyptus, they infuse spaces with therapeutic fragrances that can relax, invigorate, or heal, turning rooms into rejuvenating sanctuaries.

Moreover, dedicated spaces for mindfulness practices are emerging as a trend. Meditation corners, adorned with comfortable floor cushions, soft lighting, and perhaps a calming water feature, offer residents a dedicated spot to breathe, reflect, and disconnect. These niches, no matter how small, act as anchors, reminding individuals to pause and find moments of peace amidst their busy schedules.

Beautiful Designer Ceiling Fans



Stylish - Reliable - Silent



THE HENLEY FAN COMPANY LTD



01256 636 509
www.henleyfan.com

SNUG FIT

Individual style is in and creating a snug room is a great way to show it - says Crittall Windows.



Courtesy: Lightfoot Windows (Kent)

Planning a new look for your home? It seems anything goes these days - the trend is for individual style. With many of us spending more time at home, householders are increasingly design savvy in creating a personal style to reflect their lifestyles.

patterns and textures with cushions, rugs and throws and you've cracked it.

Creating a cosy snug room is a great way to show individuality and very in vogue. Think home comforts. Dimmable 'focus' lighting; natural shades, rugs, soft sofa, Smart TV, play area or a games section, maybe a book corner for you and the kids.

As is sharing natural light throughout your home.

While the nature of a snug is to make it comfy, clever use of glazing via Crittall's internal steel screens, doors and windows - made to order to your personal needs - ensure light is let in throughout the home and they look stylish, without compromising warmth and cosiness.

Add a striking colour scheme, plants, prints,

Visit www.crittall-windows.co.uk
t: 01376 530800 | e: hq@crittall-windows.co.uk



Design & Display Structures

RETAIL FIT OUT COLUMNS



- Elegant cloaking of your support structures
- Robust construction resisting people loads
 - Quick to install • Fire rated
- Available in a wide range of sizes, configurations and RAL/BS colours
- No follow on wet trades required as fully finished in the factory offering easy clean low maintenance surface

For more details contact Design & Display Structures

Allan Curtis 07718 320184 • design-and-display.co.uk

COMPLETE
FITTED FURNITURE
Richard Phillips



GET INSPIRED

BECAUSE ALL HOMES ARE BUILT ON LOVE

DISCOVER THE COMPLETE COLLECTION
COMPLETEFITTEDFURNITURE.COM

BERKHAMSTEAD | WATFORD | AMERSHAM
01442 777 111 | 01923 224 000 | 01494 434 363



RECLAIMED MATERIALS **FOR BESPOKE DESIGNS**

Bespoke staircase company Bisca is driven by an ethos centred around environmental sustainability, placing strong focus on sourcing materials responsibly, upcycling and creating strong partnerships with suppliers who share the same values. A recent project combined all the above in a unique staircase, designed and made from an



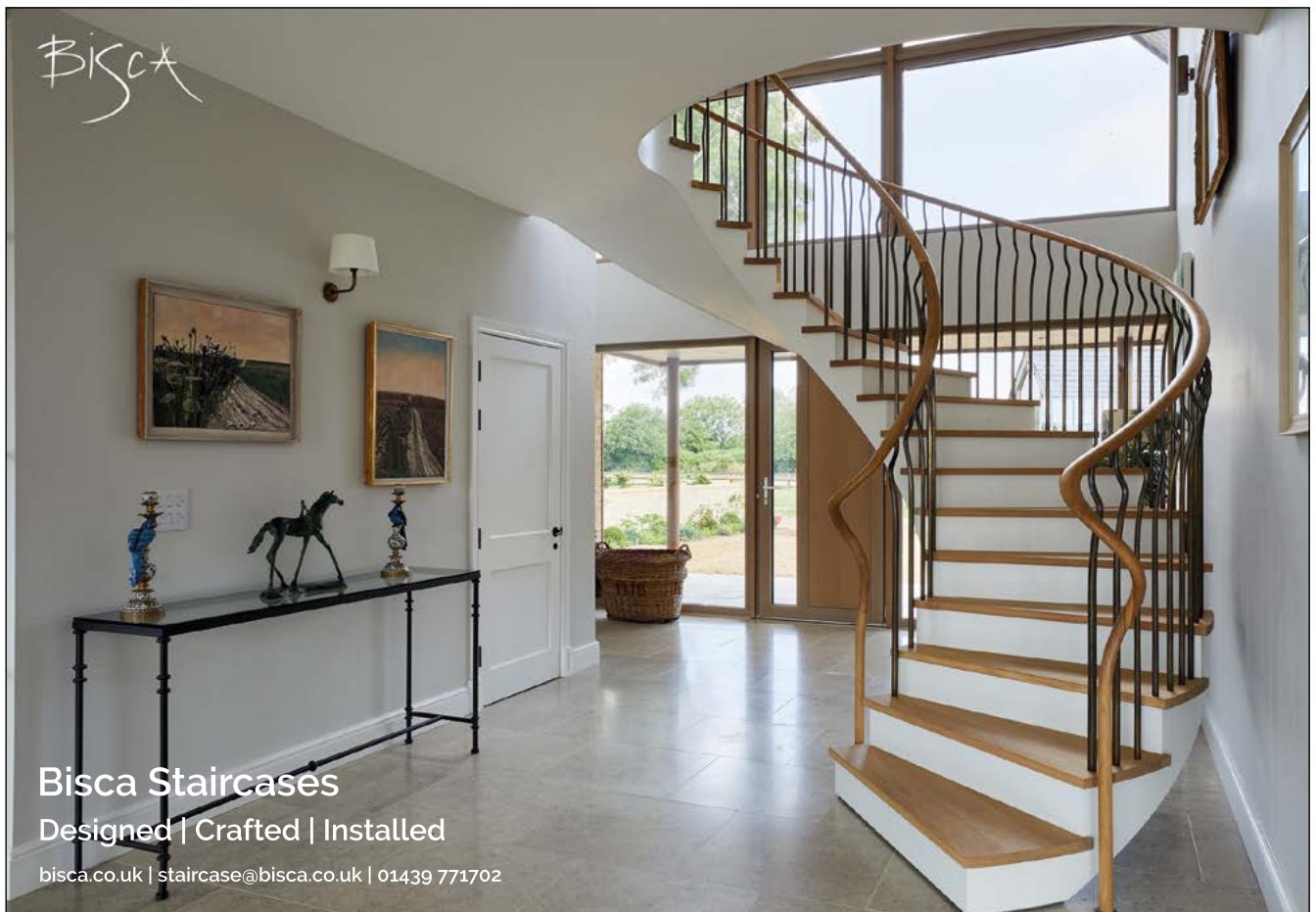
old lock gate. Crafted into treads for a helical staircase, the timber added a beautiful patina to the design, striking the perfect balance between elegant and rustic.

For several other projects, Bisca made use of old vodka barrels sourced from a distillery. The oak barrels are crafted into sleek-looking treads, giving the solid timber a new lease of life. Whether cantilevered or supported by stringers, an open tread design will suit a multitude of property styles and makes the most of natural light levels.

With a bespoke design, the choice of materials is wide and varied, and homeowners can personalise a design by adding materials they source themselves. A staircase for a refurbished farmhouse included a feature stone tread at the base made from stone that originally formed part of the Baltic Chamber Arch. Incorporating it into the design alongside treads made from old harbour props, provided a connection to the local area.



BISCA | 01439 771 702 | bisca.co.uk



Bisca Staircases
Designed | Crafted | Installed

bisca.co.uk | staircase@bisca.co.uk | 01439 771702

The new shape of the creative space design

INCO Company and Reflections Brand have formed a mutually beneficial partnership where the worlds of design and art seamlessly intertwine. Their collaboration thrives on shared perspectives and creative talents that enrich each other.

Reflections Brand possesses a unique and exceptional ability to craft and provide all the artistic elements that define a truly remarkable space. Their expertise in producing art pieces is instrumental in shaping the aesthetics of spaces. This talent harmoniously complements the work of INCO Company, resulting in the creation of remarkable environments.

Together, they synergize the realms of design and art, resulting in the development of extraordinary spaces that captivate those who experience them.

Our deep-seated passion revolves around the creation of spaces that seamlessly combine both visual appeal and practical utility. Our team, consisting of experienced designers and artists, is unwaveringly committed to discovering fresh and inventive solutions for a wide spectrum of interior design projects. Our specialization extends to a comprehensive array of interior design, landscape architecture, and branding design services.



This partnership beautifully illustrates how the combination of different creative disciplines can lead to a harmonious and visually stunning end product.



Our common mission is to shape spaces that transcend the ordinary and consistently go above and beyond our clients' expectations. With a diverse and extensive client base, we take immense pride in our ability to tackle a broad range of projects. If you're seeking top-tier design services, look no further. We are the ultimate destination for all your design needs.



CREATIVE INTERIOR DESIGN OFFICE SOUTHAMPTON



reflections
DESIGN LIFE GALLERY

07384 040530

☐ reflections.dsgn

☐ inco.dsgn

www.reflectionsdsgn.co.uk

www.incodsgn.co.uk

INCO
ARTHITECTURE

07709 081689

SMELLS LIKE SPELLS



Smells Like Spells production is a harmonized combination of natural fiber, ecology, and a drop of esoteric know how.

Each product is hand crafted, followed by original recipes, synchronized of both - traditional folk wisdom and experience, also modern perfumery, candle, and incense craft methodology. We discover the tender distance between daily usage of unique products and the touch of magic in our life. The magic fragrance recipes of our candles are based on old customs, traditions, and the belief that every plant or its aroma has its own magical purpose. The main notes supplement each other with aromatherapy properties and create a high-end fragrance pyramid where each scent has its place in harmony with other aromas.

INCANTATIONS

The Latin incantare, which means "to consecrate with spells, to charm, to bewitch, to ensorcel", forms the basis of the word "enchant", with deep linguistic roots going back to the Proto-Indo-European. An incantation is a magical formula intended to attract magic powers into our life. As almost all such texts' purpose is to restore the system of the world disturbed by misfortunes. Sometimes the logic of incantation texts may seem illogical. However here we encounter another logic, that is the logic of the magic world.

Having collected a large collection of incantation texts, Smells Like Spells entrusted their interpretation to probably the most famous Lithuanian silkscreen artist Mikalojus Povilas Vilutis. He is considered the pioneer of silkscreen printing in Lithuania.

"The hand must be a perfect instrument, automatically recreating an image that comes from the subconscious to the conscious mind. Only then creativity is a spiritual activity and not some handicraft." <...> "An artist is a slave to his own artistic nature, to his ability to accumulate images that come from somewhere. He is pregnant with these images." <...> "Should we try to explain incantations? No. Incantations are a mystery by itself." M. P. Vilutis

Every limited edition collection scented candle comes with the Certificate of Authenticity which certifies that the porcelain candle jar with cover (decal and gilded details on it) is an original artwork by the artist M.P. Vilutis.

www.smellslikespells.com



SMELLS LIKE
SPELLS

Do not try to explain the mystery

INCANTATIONS

SENSE IT



Mėsinių g. 7, Vilnius, LT-01133, Lithuania

+370 600 55 718 | hello@smellslikespells.com

WWW.SMELLSLIKESPELLS.COM

16

welcome home, adelante

The first look. The first moment at your doorstep. You know you have arrived at a remarkable place. **Adelante**, welcome home. The luxury door phone for your Basalte Home.

