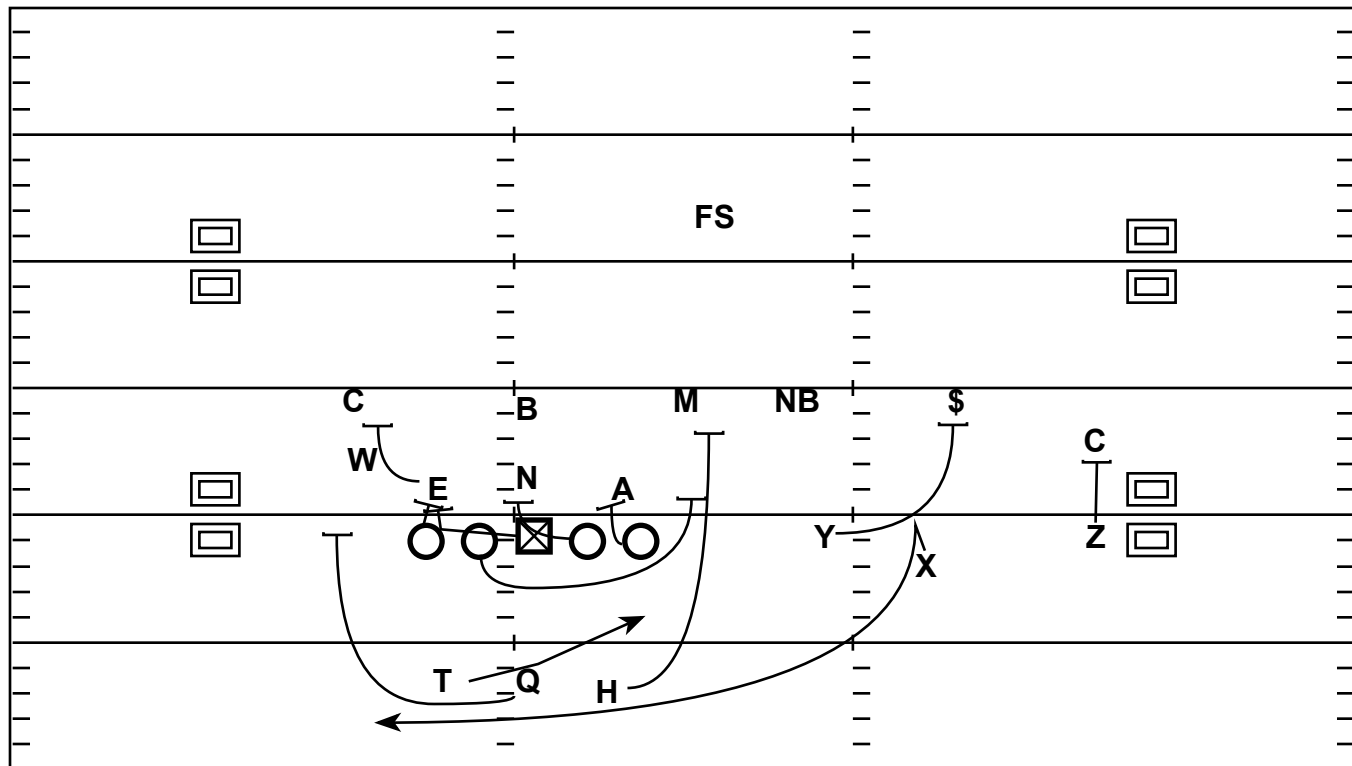


Split Backs Over: Reverse Off Power

Quarter	Time	D & D	YD Line	Hash	Score
2nd	2:14	2 - 10	21	L	24 - 0



Strategy: Take advantage of aggressive overflow with a well timed reverse.

QB Progression/Read: Hand-Off to RB then Lead up for Reverse

X - Upfield to Reverse

H - False Lead

Y - False Block \$

Z - False Block Corner

T - Sell Outside Path to Toss to Reverse

LT - Man Seal End, to Corner

LG - False Pull Away

C - Overtake End, Bump Tackle Off

RG - Sell Down Block to Seal Nose

RT - Sell Down Block to Seal Anchor