

GROUNDSKEEPING

JOURNAL

£2.95

VOL. 21 | JANUARY/FEBRUARY 2024

GKB MACHINES

DTA delivers robust reliability on hire and contracting fleet of Cleveland Land Services

INFINICUT

Trio of INFINICUT's deliver impressive cut quality and battery life for Hallamshire Golf Club

ORIGIN AMENITY

Pitch Perfect at Morecambe Football

REDEXIM

Get set for new synthetic standards with the Redexim Verti-Top™





Kubota

NEW SEASON NEW TRACTOR?



Invest in the best for 2024.

Whatever the task, you can
always depend on a Kubota.



Visit us at BTME
Stand No. 624

Kubota Care

Up to 5yrs warranty available.

*Available on selected models

BOOK A DEMO

Contact your dealer today



For Earth, For Life
Kubota



www.kubota.co.uk

In this issue

Welcome to *Groundskeeping Journal*, the UK's leading bi-monthly publication providing latest product innovations, industry news and opinions from key professionals within the industry. With focuses on Aeration, Irrigation & Drainage; Greenskeeping; Latest News; Machinery; Pitch & Line Marking; Specialist Mowers; Sports Ground Equipment; Sports Pitches; Top Dressing; Sprayers & Spraying and Turf Management.



32

Redexim

Grass Plant Ltd praise Redexim Verti-Drain® for high speed and versatility

10 Reesink UK

Record year with five Toro launches on Reesink UK stand

18 Otterbine

Bring your course to life at night with Otterbine's lighting systems

20 Iseki

ISEKI's partnership with Jimmy's Farm & Wildlife Park

21 Johnson's Sports Seeds

Prestwick GC futureproof their fairways with new sustainable mix from Johnsons

30 Billy Goat

The importance of aeration for your lawn

32 Redexim

Grass Plant Ltd praise Redexim Verti-Drain® for high speed and versatility

33 GKB Machines

DTA delivers robust reliability on hire and contracting fleet of Cleveland Land Services

40 Campey Turfcare

Koro RECYCLINGDRESSER® can be golfs sustainable topdressing method

44 Attraxor

Using Attraxor for growth regulation and Poa annua management



Get Pitch Perfect Lines

With our extensive range of line marking machines and consumables

We supply leading technology brands **TinyMobileRobots** and **iGo**, together with a comprehensive range of **Impact** ready-to-use and **Duraline** dilutable concentrate paints. So, whether you need the cutting-edge of a GPS technology robotic, the convenience of a spray marker machine, or the traditional transfer wheel marker, Origin Amenity Solutions has the product, expertise and support you need.



We're leading the way in innovative GPS line marking robots

- Choice of machines to suit your budget and requirements
- Over 50 pitch templates available
- Comprehensive training
- Full after-sales support from our experienced team
- A perfect partnership with ready-to-use Impact paint

To find out more, call our dedicated Line Marking Team on **0800 138 7222**



Request a
free demo
today

Contact Us

Enhancing Quality Sports Services

Hello and welcome to Groundskeeping Journal. Our publication has been created to showcase the very latest industry news and product information from the Groundskeeping sector.

In each edition we carry in depth articles from some of the industry leaders, the articles cover many aspects of Groundskeeping with some offering tips and advice on Sports Pitches, Turf Management, Greens Keeping and much, much more. Whether you are looking for tips and advice on creating the perfect green or looking to source



the right product for your synthetic surface GKJ has it all.

Our vision is to connect our readers with professionals and suppliers working within their sector and we hope that we have created a platform that will become a must have tool for anyone working within the industry.

Many thanks for taking the time to read our publication, we hope you enjoy the read and if you would like to keep up to date with all things GKJ then make sure you check out our subscribe page.



Follow us on our Social Media



@gkj_mag

Contact the Groundskeeping Journal team below:

Editor-In-Chief

Antony Holter
editor@mhmagazine.co.uk
01304 806039

Editor

Emma Page
emma@groundskeepingjournal.co.uk
01304 806039

Publishing Director

Martin Holmes
martin@mhmagazine.co.uk
01304 806039

Sales Director

Lee Martin
lee@groundskeepingjournal.co.uk
01227 936974

Business Manager

Josh Holmes
josh@mhmagazine.co.uk
01304 806039

Studio Designer

Richard Bland
richard@mhmagazine.co.uk

Digital Manager

Jamie Bullock
jamie@mhmagazine.co.uk
01227 936971

Accounts Department

Alison Holmes
accounts@mhmediaglobal.com
01227 936971

Every effort is made to ensure the accuracy and reliability of material published in Groundskeeping Journal however, the publishers accept no responsibility for the claims or opinions made by advertisers, manufacturers or contributors. No part of this publication may be reproduced or transmitted in any form or by any means, mechanical, electronic (including photocopying) or stored in any information retrieval system without the prior consent of the publisher.

Market leading turf maintenance machinery

Groundsman Industries Ltd welcome you to visit our stand 108 at the BTME exhibition in January at Harrogate to see our unique range of Aerators, Sod Cutters and Accessories.

On display the Turf Multi Cutter range offering excellent cutting ability and traction in all conditions with smooth operation and operator comfort.

The four wheel drive with rear blade cuts a consistent thickness even on rolling terrain as well as accommodating a wide range of blades and attachments. A Guillotine attachment is available to chop the sod into pre-set lengths. Groundsman Tractor Mounting and Pedestrian Aerators all use Groundsman's proven rugged Elliptical Plunge Action mechanism for aeration down to 15cm depth with minimal surface disruption. Quick-change tine-holders switch between Solid, Chisel, Hollow and Cluster Tines for aeration, thatch removal or over-seeding. The Flexblade Collector is available for many aerators to Core and Collect in one pass or for use independently for Follow-up Collection of Cores or Linear Aeration Soil.



Visit www.groundsmanindustries.com

GROUNDSMAN[®] *Leading by design*

Come see us at the BIGGA **23rd - 25th January 2024**
Turf Management
Exhibition, Harrogate
BTME, Harrogate
Stand 108

| | |
|---|--|
| <p>Turf / Sod Cutters</p> <ul style="list-style-type: none"> • Exceptional 4X4 Traction & Cutting • Low Operator Hand Arm Vibrations • 12 - 24 inch Sod Cutting Widths  | <p>Turf Aerators</p> <ul style="list-style-type: none"> • Solid or Hollow Coring Tines • Proven Reliability & Performance • Consistent Depth to 5" Depth  |
| <p>Soil / Core Collector</p> <ul style="list-style-type: none"> • Aerator & 3 Point Linkage Attachment • Cores and Linear Aeration Soil • Clean Collection Wet or Dry  | <p>Tractor Aerators</p> <ul style="list-style-type: none"> • Core and Collect in one Pass • Fast Coverage • Clean Collection with No Smearing  |

Versatile
Reliable
Performance...



Tel : +44(0) 28 2766 7049
enquiries@groundsmanindustries.com
www.groundsmanindustries.com

ALL YOUR SUPPLIES IN ONE PLACE FOR
TURFCARE & AMENITY
 FROM EAST RIDING HORTICULTURE

Turfcare
Seed
Nutrition
Controls
Wetting Agents
Equipment
Irrigation

sales@erh-ltd.co.uk
01904 608157
www.eastridinghorticulture.co.uk

With over 30 years' experience in the industry we pride ourselves on offering quality products with the knowledge of how to use them, ensuring you receive the right product at a competitive price.

Nationwide delivery from our on-site warehouses.

Solutions for the growing world.



East Riding Horticulture Ltd



BIGGA TURF MANAGEMENT EXHIBITION

SEE YOU AT #BTME2024

REGISTER NOW



HARROGATE
CONVENTION CENTRE
23-25 JANUARY 2024

Altrincham Grammar School for Boys Provides Sport for All with Duncan Ross Cricket and Drainage Project

Altrincham Grammar School for Boys (AGSB) has planned extensively to provide Sports for All. The latest development projects aimed at achieving this goal include cricket and drainage schemes, spanning 23000m², successfully installed by contractor, Duncan Ross Ltd.

Launched in April 2022, the campaign aims to allow pupils at every level to take advantage of facilities in the school and after-school clubs, while community grass-roots sports clubs from across Altrincham and Trafford will be able to use the facilities in the evenings.

Completed by the Duncan Ross team in June 2023, the five-lane synthetic cricket wicket installation, including surrounds, cage, nets and batting screens, has provided the opportunity for more pupils to participate in the school's most popular summer sport.





“

In the months since June, we've had a lot of rain, so we've already seen how the drainage work has improved the area no end.



To address the problem of waterlogged fields during the winter, a significant lateral and sand slit drainage project was undertaken simultaneously to ensure year-round play and allow Hamblin Trust Head Groundsman Neil Brown to raise the quality of the pitches.

With timings tight for the work to take place and the grow-in period, pre-planning was a crucial aspect of the project, and Neil puts the success down to the work done by Duncan Ross Ltd in the build-up.

“In the months since June, we've had a lot of rain, so we've already seen how the drainage work has improved the area no end,” Neil said. “We've had no holding water at all on the main field, and by the time we're into winter, the drains will have settled, and they will only be more effective, so we won't have to worry about cancelling fixtures, training sessions or lessons.

“We decided to start work during the summer term because of the

timings involved, which meant we needed a comprehensive plan, and that's what Managing Director Duncan Ross, gave us. He investigates the area properly and gives you an honest opinion on what should be done and won't do anything for the sake of it.

“He addressed all our issues, and now we can focus on improving the quality. Good drainage helps everything. The grass coverage will improve, we won't be taking tractors or mowers onto boggy ground, and we can confidently implement a programme that will see continuous improvement over the coming years.”

AGSB aims to take the school's tradition of sporting excellence to a new level, and a key part of that is consistency. With Phase 1 of drainage installation complete, Duncan Ross Ltd will return to mirror the work on the school's second field, ensuring quality across the entire site.

Duncan Ross on 01257 255321
www.duncanrossltd.co.uk

Record year with five Toro launches on Reesink UK stand

It will be a record-breaking year for Reesink Turfcare as five new equipment launches from Toro happen at BTME 2024, which seems fitting coinciding with a now 40-year strong partnership, too.

Never has there been so much come at once from Toro, the leading worldwide provider of turf maintenance equipment, and BTME couldn't be better placed to showcase it all to the industry.

Under wraps until showtime, Reesink will be announcing another mower that removes fuel from the equation and offers the solution to English Premier League guidance for noise generation. For a first glimpse of this brand-new innovation visitors should make their way to stand 622.

Two trusted vehicles for the fine turf market have had an electric makeover. Now Toro's patent-pending lithium-ion HyperCell batteries power the Workman MDX Lithium. With the same strength and durability that's always been relied on, this utility vehicle is now essentially maintenance-free.

There's good news for owners of the popular Toro ProCore 648 or 648s aerator, there's now an easy

It's unprecedented the new technology and electric updates we have coming from Toro this year, I'd go far as to say it makes the Reesink stand at BTME unmissable for those interested in new turfcare technologies.



transport option. The TransPro 648 is just what's needed for transporting these aerators around the course. No more long walks between holes this neat trailer has a unique design allowing for quick loading and unloading and easy securing and release of the aerator.

There's new technology in the form of Toro's Geolink precision spray system as spraying efficiency and precision coverage of the Toro Multi Pro sprayer reaches new heights thanks to the addition of autonomous functionality. Years in the making as Toro finetuned the technology to deliver the ultimate spraying solution and, according to Reesink, it's worth the wait.

Completing the line up with a new entry point to market, customers can even add passenger vehicles to their fleet with the arrival of Toro Vista. Now there's the option for members and guests to experience the smooth ride of a Toro. Available for four, six and eight passengers, this is a quality transport solution.

Jon Cole, turfcare divisional business manager at Reesink, says: "It's unprecedented the new technology and electric updates we have coming from Toro this

year, I'd go far as to say it makes the Reesink stand at BTME unmissable for those interested in new turfcare technologies. It's a wonderful way to mark 40 years of a successful working partnership."

Also, on stand 622 in hall 6 will be the effective Bio-Circle GT Maxi, to keep parts and machines clean the environmentally friendly way - with no chemicals. From Reesink Hydro-Scapes there will be a selection of irrigation and water aeration solutions from Toro Irrigation, Perrot and Otterbine.

Nearby on stand 636 will be the latest sustainable technology from Reesink e-Vehicles. Award-winning brand STAR EV will show two of its most popular electric Capella Work Machines and the electric, lightweight, optional self-balancing, wide-wheeled scooter from KAASPEED.

Whether you're heading to the exhibition for the newest golf course machinery or equipment for sports turf maintenance, sustainable technology solutions or advice, Reesink has it all on stands 622 and 636.

www.reesinkuk.co.uk

NEW TOOL for the golf course crew: KSAB SprinklerTrim

The Swedish company KSAB Golf Equipment* is now introducing a new irrigation head trimmer to the European market. The SprinklerTrim promises to get the job done quick and easy, using the electric screw driver most greenkeepers keep close at hand. No tweaking or kneeling necessary, just aim and press the button.



The tool was introduced to the Swedish market in May 2023 and soaked up immediately. Already about 20% of the Swedish golf courses has at least one, praising the simplicity. Starting off with 3 cutting blade sizes, on customer demand the range is now 7 sizes, fitting most of the common spreaders used on golf courses (Rain Bird, Hunter, Toro, Perrot)

-It might be ugly, but it's brilliant!

KSAB will be showing the SprinklerTrim at BTME2024 Harrogate, stand no 111.

www.ksab.com

Try SprinklerTrim at BTME

Stand 111
KSAB
www.ksab.com

PASSION FOR THE PROFESSION

Using our knowledge of contracting to supply professionals with the ultimate turf maintenance solutions.

SEE US AT
BTME 2024
ON STAND 644 -
HALL 6



FOR NATURAL, SYNTHETIC OR HYBRID PITCHES - WE HAVE A MACHINE TO SUIT YOUR NEEDS
www.gkbmachines.com • tom@gkbmachines.com • 07495 883617



Playgrounds and sports fields pose a unique challenge for those responsible for maintaining them

The grass on the field needs to be tough to handle a lot of wear and tear, look nice, and not cost too much to keep in good shape. People who take care of the field can use RootVita® to help with these jobs.

RootVita® is a natural product designed to nourish and strengthen plant root systems. This innovative All-In-One formula enhances tolerance to both biotic and abiotic stresses, facilitating improved nutrient uptake and ultimately leading to improve plant health. RootVita® is a unique blend of biofertilisers, mycorrhizae, plant growth-promoting rhizosphere microbes (PGPR microbes), nutrients and vitamins.

Effectiveness of RootVita®

RootVita® has significantly improved turfgrass performance, enhancing turf density and the quality of root and shoot systems. This results in



denser and healthier turf, improving aesthetics and sustainability, ultimately delivering a better playing surface or appearance.

RootVita® has made a significant impact when it comes to enhancing the overall health of the turf. It has not only helped in reducing

stress but also improved the uptake of nutrients and had a positive influence on both the shoot and root systems.

If you are interested in any of our products, then please get in touch. Learn more at www.bionema.com or email info@bionema.com.

Rootvita® SP
All in One - Biostimulant

RootVita®SP is a natural product that nourishes and imparts vigour to crop root systems. RootVita®SP comprises Biofertilisers, PGPR, Nutrients, Prebiotics and Vitamins.

Bionema
Founded on Research – Focused on Nature

Foley to reveal a new product at BTME 2024

And all products will be sporting the new contemporary grey livery

F

oley Company through its UK distributor ProSport UK Ltd, is looking forward to attending BTME 2024 with the

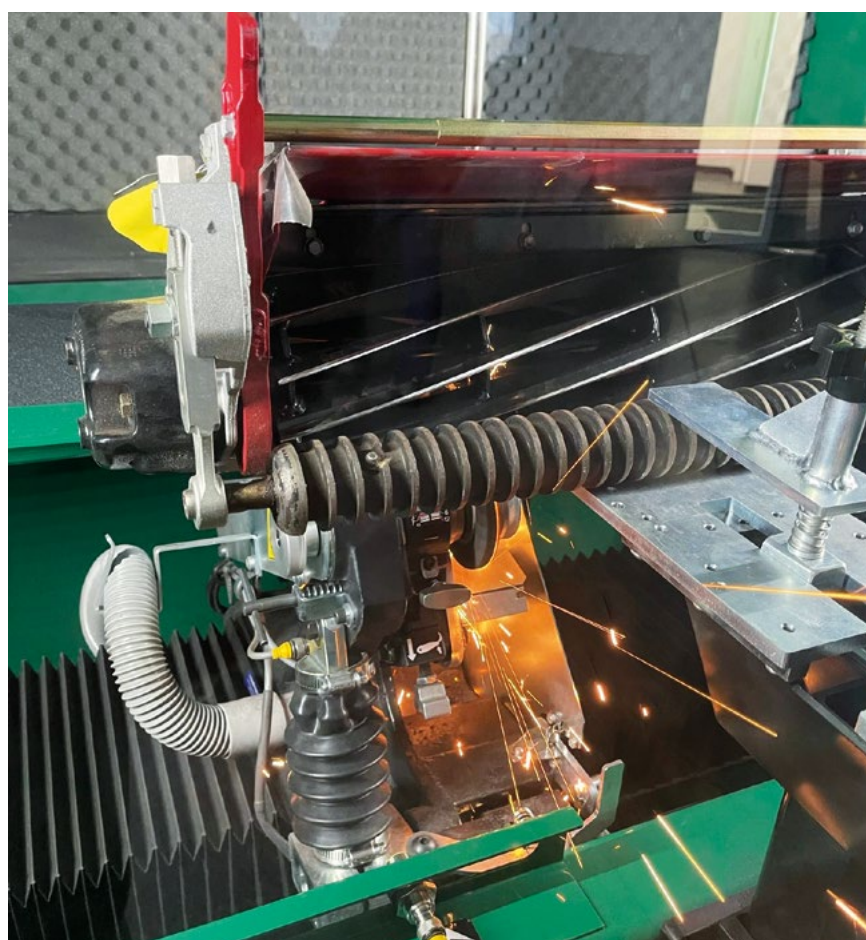
launch of a new product. As well as something completely new, you will have the opportunity to see some of the finest Foley professional grinders on show in the new grey livery. From a selection of the latest in grinding technology and technique, Foley will be showcasing the Accu-Pro 633 cylinder grinder and the Accu-Pro 672 bedknife grinder.

Whatever the size of your golf club, the quality you want to achieve for your members is the same. There is a Foley model for everyone at every professional level of play.

At BTME 2024, you will also have the chance to discuss any requirements with the UK and Ireland distributor ProSport UK Ltd, Ian Robson.

Foley Company is the leading manufacturer of professional grinders delivering quality, state-of-the-art spin, and relief grinders across the world. UK distributor ProSport UK continues to supply Foley professional grinders to the top golf courses in the UK impressing greenkeepers with the speed and versatility of the Foley range.

Many clubs across the whole spectrum, such as St Andrews, Carnoustie, the Buckinghamshire, Kingsbarns, Dumbarnie Links, and The Grove, to name but a few, have embraced the Foley method to achieve and retain the sharpest blades, longer. The recent Open at Royal Liverpool was supported by Foley Company throughout the



week pre-ceding the competition, to ensure the best surfaces were delivered right up to and throughout the Tournament.

And dealer outlets too, when looking to deliver an excellent reliable service to their customers, have chosen to go with Foley. The choice of spin or relief is no longer the question. Foley machines will do both and some models, such as the ACCU-Sharp, ACCU-Pro and ACCU-Master, have automatic grinding pre-sets and adjustment systems to decrease time and labour.

Ask the question; how do I get the most out of my workshop resources? Then choose the most effective method to sharpen your cutting units.

Using the advancements in technology to streamline grinding has been a significant positive with all the latest Foley grinders, so when it comes to grinding, the best got even better.

Foley delivers every time.

www.prosportukltd.com

Outstanding Service leads to an Outstanding Surface at Hove Prep School

After intensive in-house operations to relieve severe compaction failed to deliver the desired results, the decision was made to undertake a full renovation on one of the pitches at Hove Prep School in Sussex. Word of mouth led Grounds and Gardens Manager Adam Bedson to speak with AMS Contracting Ltd who he cites, from the outset, delivered outstanding customer service and confidence in their capability to fix the situation to the standards required - which they did, to the satisfaction of the school and pupils alike!

Hove Prep School is one of three sites belonging to Lancing College, with its own sports facilities supporting a packed programme of year-round play and coaching. "It became evident that years of overuse had contributed to severe compaction problems that became almost impossible to recover" explains Adam, who has been at the college since 2019. "Kit we hired failed to rectify the problem so we reached out to Ashley and Myles Strange at AMS who immediately put us at ease."

"Having not conducted a project of this scale for a good number of years the Bursar naturally had a lot of questions, which the AMS team answered in-depth and in a timely manner. The level of care and knowledge shown definitely helped to secure the funding we needed to get the project underway in the summer of 2023."

The full pitch renovation included surface removal, soil profile upgrade, laser-levelling, seeding and nutritional programme, conducted by a team of four operatives under the guidance of Ashley and Myles. "We felt in safe hands every step of the way. What really stood out for me was the hours the team were prepared to work - on site from sunrise and non-stop until the early evening.



They understood our need to get the work, which also included renovating our cricket square, complete in the window available in order to get the surfaces back into play as quickly as possible.”

The results, Adam says, speak for themselves. “Within seven days we went from a sandy field to seeing

the green hue of germination. Since then, we’ve nurtured the pitch to full strength and coverage and the pupils are now enjoying playing on it.” He continues, “This wet start to winter has also highlighted how incredibly well the pitch drains now. Within an hour of the rain stopping, the pitch is playable which was previously unheard of.”

“The sports staff are over the moon and everybody is really invested in protecting the asset we now have. The success of this project signals the start of a fantastic partnership between ourselves and AMS Contracting, and we’re already in touch with the team about what’s

www.amscontracting.co.uk



“

Within seven days we went from a sandy field to seeing the green hue of germination. Since then, we’ve nurtured the pitch to full strength and coverage and the pupils are now enjoying playing on it.

Midwinter Norfolk morning wins annual golf greenkeeping photographic competition

A

drone image showing the beautiful but harsh conditions faced by greenkeepers throughout

winter has been revealed as the overall winner of the British & International Golf Greenkeepers Association (BIGGA) Annual Photographic Competition 2023 sponsored by Syngenta.

Thetford first assistant greenkeeper and BIGGA member David Ball's image was chosen by competition judges as the overall winner, with the selection committee also taking into account the results of a public vote, held across BIGGA's social media accounts.

The image was taken by drone in January 2023 over Thetford's 5th hole at around 7.30am. It shows sunlight breaking through the clouds as a layer of mist rolls into shot. The fairways and surrounding trees are crisp with a layer of frost.

David said: "We greenkeepers are privileged to experience these times of day that most people don't get to see during their working hours. I was just lucky and in the right place at the right time on this beautiful morning. It is such an honour to win this award, so thank you to BIGGA and Syngenta."



David Ball's image of a winter sunrise over Thetford is the overall competition winner

BIGGA's annual photographic competition is a celebration of the wonderful golfing landscape and the role greenkeepers play in shaping it for golfers and the wider public to enjoy. Twelve images were selected in total for the annual BIGGA calendar, with winners also chosen in the separate categories of Greenkeeping, Landscape and Wildlife.

- Landscape: Alistair Morrison, head greenkeeper, Durness Golf Club
- Greenkeeping: Peter Meek, greenkeeper, Bath Golf Club
- Wildlife: Elliot Walters, greenkeeper, Robin Hood Golf Club

You can view all 12 images selected to form the BIGGA desktop calendar on the [BIGGA website](#). A downloadable version of the calendar for use on your desktop background is available [here](#).

BIGGA CEO Jim Croxton said: "BIGGA members work in some spectacular environments and each year the judges struggle to separate the entries, such is the quality of submissions. It's always fascinating to see how the public votes when we post the finalists on our social media channels.

"David Ball's entry stood out to us as it showcases the beautiful golf

course at Thetford at a time that golfers will rarely see it - deep in the depths of winter - yet there are greenkeepers present, putting in the hard work that makes golf possible when warmer weather returns.

“Congratulations to all the winners and thank you once again to our valued sponsors at Syngenta.”

As overall competition winner, David has won a DJI Mini 2 SE Drone and a framed print of his image to be presented at BTME 2024, the greenkeeping community’s annual gathering in January.

Each of the category winners receive a £150 Love2Shop voucher.

BIGGA’s Annual Photographic Competition sponsored by Syngenta will return next year, so greenkeepers are encouraged to get snapping now to be in with a chance of winning more great prizes.



Elliot Walters’ bee at Robin Hood Golf Club is the Wildlife category winner

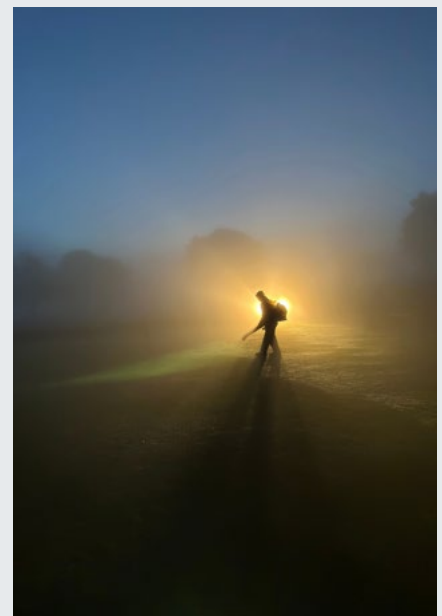


BIGGA members work in some spectacular environments and each year the judges struggle to separate the entries, such is the quality of submissions.

Registration for BTME 2024 and the associated Continue to Learn education programme is open. The event takes place from 21 to 25 January 2024 and you can find out more by heading to the BTME website, www.btme.org.uk



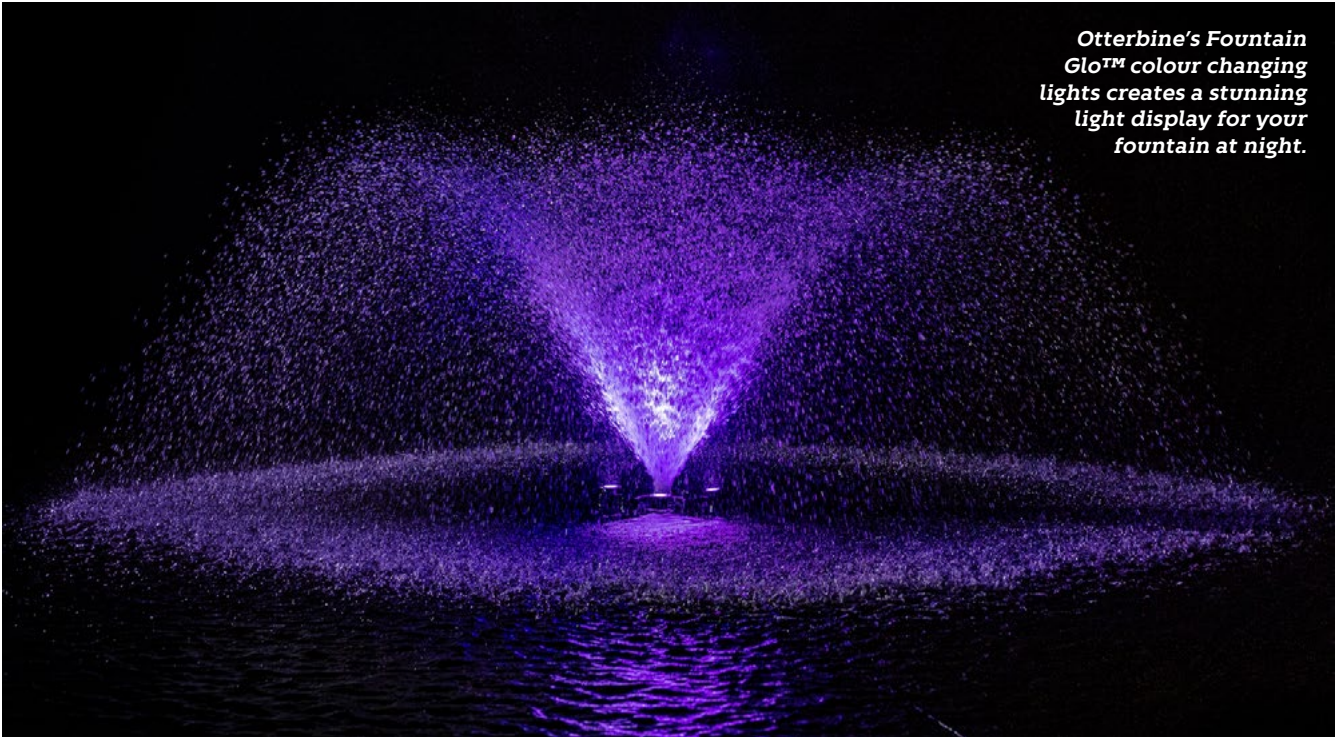
Alistair Morrison’s wintry scene at Durness GC is the Landscape category winner



Peter Meek’s misty morning at Bath Golf Club is the Greenkeeping category winner

Bring your course to life at night With Otterbine's lighting systems

Otterbine's Fountain Glo™ colour changing lights creates a stunning light display for your fountain at night.



W

ith Otterbine's Fountain Glo™ colour changing lights there is no need for the lights to go out when the sun goes down.

Otterbine fountains are renowned for being multifunctional tools, ensuring not only a centrepiece for your lake and pond during the day, but also, most importantly, for ensuring clean, clear water. Now, these sets bring even more value to your investment by ensuring your fountain commands attention at night too.

Designed to give rich vibrant light to accentuate any fountain pattern from 0.5 to 25hp with a variety of coloured displays and sequences, Otterbine's RGBW lights take your venue from day to night in style.

The perfect addition for resort-style golf clubs and those with hotels and a focus on events, this simple addition provides a stunning light display to create an enchanting evening atmosphere.

The quality of Otterbine is widely regarded to be market-leading and these lighting systems are no different. All are manufactured from corrosion resistant materials and feature energy-efficient LED lamps to deliver years of service without the need to change bulbs. All lights come complete with a two or three year warranty.

Available are a standard LED low voltage light system or a choice of colour changing and sequencing systems: the Mini and Midi sets come with a handheld remote to select pre-programmed sequences and the Maxi set has the ability to create custom sequences.

Simon Powell, Otterbine's business development manager at Reesink Turfcare, distributor of Otterbine, says: "It would be quite easy for those with an Otterbine fountain to think it's fantastic as it is - and it is! Healthy water attracting wildlife and bringing beauty to an otherwise still area of water. But that would be denying it its full capabilities; the fountain lighting enhancing displays bring your course to life in another way and creates an after-dark atmosphere like no other, which is an especially appealing proposition for weddings and events with colour co-ordinated themes."

To find out more about the Otterbine Fountain Glo™ colour changing lights, contact Reesink on 01480 226800, email info@reesinkturfcare.co.uk or visit www.reesinkturfcare.co.uk.

DON'T MISS - BY FAR THE LARGEST GROUND CARE, AGRICULTURE, CONSTRUCTION & VITICULTURE MACHINERY DEALER SHOW IN THE UK

THE 64th **DOE** ANNUAL SHOW

GROUND CARE



OVER 150 TRADE STANDS...

- Come and see the latest machinery and innovations available on the market
- Meet the manufacturers • Visit the extended Groundcare Zone
- Working demonstrations • Precision farming and technology
- Fruit and viticulture machinery • Clearance bargains
- Vintage tractors including Triple D • Special offers
- Parts and country store offers • NRoSO and BIGGA CPD points
- Clothing and footwear sale and much, much more...

#doeshow2024



6th, 7th, & 8th FEB 2024



ULTING, MALDON CM9 6QH



SCAN ME

Ulting, Maldon Essex CM9 6QH
Tel 01245 380311 | Email: sales@ernestdoe.com
www.ernestdoe.com

 **ernestDOE**

ISEKI's partnership with Jimmy's Farm & Wildlife Park

Iseki are thrilled to announce their collaboration with Jimmy's Farm & Wildlife Park, at Wherstead near Ipswich, owned by television presenter and farmer, Jimmy Doherty. Iseki UK & Ireland has provided an ISEKI TLE3410 HST Tractor for use in multiple roles around the Park.

This collaboration contributes to the 'Big Bear Rescue' initiative, their most ambitious project yet, involving the rescue of polar bear Ewa, who has recently arrived safely at Jimmy's Farm following the closure of the overseas zoo where she was previously living. Jimmy's Farm & Wildlife Park has now become the largest polar bear reserve in Europe. Additionally, a European brown bear named Diego will be moving to Jimmy's Farm in May of next year.

Jimmy's Farm is dedicated to promoting an understanding of the natural world and inspiring future generations to safeguard our planet. The need to conserve our planet, habitats, and both indigenous and exotic wildlife has never been greater. To tackle this, Jimmy's Farm has established an official charity called Space for the Wild.

Space for the Wild will make significant strides towards environmental protection. It plans to establish habitats, advocate for regenerative farming, and rescue and rehabilitate wildlife.



Space for the Wild will make significant strides towards environmental protection. It plans to establish habitats, advocate for regenerative farming, and rescue and rehabilitate wildlife.

The TLE3410 is a very capable 40hp, 4WD hydrostatic compact tractor. The spacious operator's platform ensures operator comfort and allows for excellent visibility whilst working. With a rear lift

capacity of 1000kg and a double acting auxiliary hydraulic service, the addition of an optional ISEKI-MX loader creates a versatile package ideally suited to work around smallholdings, farms, estates, stables, sportsgrounds and wildlife parks.

Stevie Sheppard, the Park Director, said, 'The TLE3410 is a great tractor and very useful to us in the day-to-day operation of our farm. Amongst other jobs, it assists us in feeding Ewa the polar bear and the arctic wolves. The operators like it and find it easy and comfortable to operate.'

www.iseki.co.uk



Prestwick GC futureproof their fairways with new sustainable mix from Johnsons

While only launched in the summer of 2023, the new hard fescue J Sustain-Fairway mixture from Johnsons Sports Seed is already making a strong first impression at the birthplace of The Open Championship. Delivering quick germination and coping with the challenges of the undulating links course, Prestwick Golf Club have commended the blend of top-rated cultivars and the role they'll play in futureproofing their fairways.

By name Dave Edmondson is Prestwick's Head Greenkeeper, supported in his role by a team of 10, but by nature he considers himself merely 'a guardian' of the venue - rich in prestigious golfing history. "I very much follow the Old Tom Morris approach to maintenance, working with nature and continuing the methodologies of my predecessors to run the course in a minimalist way" says Dave. "We

don't use any pesticides, fungicides, hardly any fertilisers and very limited water."

"My pursuit of traditional greenkeeping techniques led me to have a conversation with our golf course consultant about our fairways, and specifically any mixtures which could help to boost the hard fescue and sheep fescue populations which are proven to thrive in low-input and links conditions. That's where I discovered Johnsons J Sustain-Fairway."

J Sustain-Fairway, available from DLF, has been designed to suit golf clubs looking to significantly boost the population of resilient varieties, providing a foundation of quality and strength with an increased tolerance to a broad range of turf stresses. "A chat with my DLF Technical Manager Stuart Yarwood made it clear that this mix would tick a lot of boxes, so we opted for

this for our main annual fairway overseed."

Sown at a rate of 7g/m² in early September, germination was visible in just over two weeks, with the seedlings then under the stewardship of Dave to thrive and establish. "So far it's been so good! The natural undulations here at Prestwick have often seen certain species struggle, particularly with coverage on the tops of the hillocks, so we've sown some additional J Sustain-Fairway here to help and, to date, it's all working brilliantly."

"The hard and sheeps fescue like a nice, settled environment and that's exactly what we can give them." Dave adds, "If we can keep building those populations with top-rated cultivars, then we will be much better placed to withstand environmental challenges and safeguard the course for the future."

www.johnsonssportsseed.co.uk

Kinsey Premiere Services

Marking out their journey with TinyLineMarker GPS-guided robots



Based in Wiltshire, Kinsey Premiere Services Ltd is a family-run grounds maintenance company serving educational facilities, commercial properties, and private residencies in Wiltshire and beyond.

Gary Kinsey established the family business in 2010 and expanded to grounds maintenance just two years later in 2012.

The company provides line-marking services to schools, councils, and amateur football and rugby clubs. They initially relied on a Transfer Wheel marker but quickly upgraded to a Fleet Beam Rider for precise line marking. However, they found that the time-consuming nature of initial markings prompted the exploration of alternative solutions. Operations Manager, Elliot Kinsey explains, "I was impressed by Origin Amenity Solutions Simon

Hughes' demonstration of the TinyMobileRobot line marker and was drawn to the device due to its manageable size, lightweight construction, and remarkable versatility. Its ability to seamlessly adapt to various marking tasks, from precise line markings to intricate designs, made it an attractive and invaluable addition to our equipment arsenal."

TinyMobileRobots is marketed and distributed exclusively in the UK by Origin Amenity Solutions who have one of the largest dedicated line marking teams in the UK.

Kinsey Premiere Services currently has a TinyLineMarker (TLM) Sport and a TinyLineMarker (TLM) Pro in their fleet. Elliot continues, "Primarily, we purchased the robots to mark sports pitches quickly and efficiently to free up our employees and allow them to focus on other grounds maintenance obligations.

The TinyLineMarker's exceptional efficiency in paint utilisation significantly reduced our overall paint consumption which also led to substantial cost savings. This, coupled with the robot's ability to automate the marking process, dramatically minimised our labour costs and streamlined our operations, saving us valuable time and resources. The robots proved to be a game-changer for our business; enhancing our efficiency, reducing expenses, and enabling us to deliver exceptional line-marking services for our clients."

Packed with a range of innovative features, the GPS-guided robots are designed to make line-marking projects as reliable, streamlined, and effortless as possible. Their low weight enables them to be lifted easily by one person and the small size means they can fit into a regular-sized car and be transported from one location to another easily.



The TLM Sport is ideal for sports teams, clubs, and schools. It is robust, with front and side bumper strips and integral ultrasonic, intelligent sensors to avoid obstacles and protect from damage. Powered by a brushless electric motor, with low energy consumption and zero emissions, the TLM Sport is an eco-friendly choice, especially when used with IMPACT ready-to-use paint. Over and above this, the TLM Pro offers advanced robotic technologies for precision line marking and is ideal for councils, contractors, and larger universities. With its powerful performance, robust design, and large, high-traction wheels, the TLM Pro can tackle any size pitch, or multiple pitches, with ease.

“The intuitive user interface is effortless to use and easy to manage”, adds Elliot, “the ease of use, accuracy, and full autonomy, coupled with an extensive library of over 200 sports markings, make them an indispensable tool for our clients. The robots’ ability to create custom logos, shapes, words, and numbers further expands their versatility and caters to the diverse needs of our clientele.”

“With over a decade of experience, we pride ourselves on providing exceptional, personalised service; utilising the latest compliant equipment to transform wild outdoor areas into beautiful and manageable spaces. Health, safety, environmental compliance, and client satisfaction are always our



With over a decade of experience, we pride ourselves on providing exceptional, personalised service; utilising the latest compliant equipment to transform wild outdoor areas into beautiful and manageable spaces.

top priorities. Our clients’ needs differ so having two different robots to cater to these works well for us. The TLM Sport is well placed to manage our amateur sports clubs and schools whilst the TLM Pro is more suited to the larger-scale council projects. We often combine the versatility of our robots to expedite line marking, especially on large fields like American Football pitches, Rugby fields, and athletic tracks. This synergy proves invaluable when time is of the essence—and allows us to playfully showcase our robotic prowess!”

The Origin Amenity Solutions team provides onsite training, maintenance, and general advice. Elliot has found the “technical support package very helpful; we’ve received excellent support whenever we’ve needed it, ensuring we deliver our clients’ requirements on time and within budget.”

Origin Amenity Solutions has recently launched a new and improved model - the TLM Pro X, which boasts even more improvements, including general upgrades to the hardware and software, enhanced electronics, and the addition of buttons to activate the pump and nozzle, enabling users to manually prime, clean and test. Elliot concludes, “As and when necessary, we will look to expand our TinyMobileRobot fleet accordingly.

www.originamenity.com



After the Flood

The year 2022 was the hottest on record in the UK and experts are warning the unprecedented heat is a sign of things to come. With the ground dried out and continued heavy footfall, amenity areas, sports fields, golf courses, parks, other tree lined spaces and even domestic back gardens suffer heavy soil compaction. When the rains come, water is unable to penetrate the soil and sports grounds in particular turn into quagmires, stopping play and resulting for many in lost

revenue. Exceptionally heavy rainfall leading to flooding has a number of other knock-on effects for turf and trees. Flood waters are heavy enough to force the oxygen out of the soil structure, leading to dead or dying turf and trees showing signs of severe stress, leaf fall and rotting roots. No amount of normal aeration, spiking or decompaction of the topsoil is going to solve a problem that goes much deeper. That is where deep aeration specialists are called for and one company, Terrain Aeration, has been solving these problems for well over thirty years.

Take some typical examples. A bowling green in Wales that has seen over ninety years of play. Built on shale, like so many, even with regular Vertidrainning, the ground had become compacted at depth. The club treasurer remembers well the day in 2018.

“The green was filling with water before my very eyes,” he says, “and after the heavy showers it remained quite sodden and unplayable. It seemed no amount of work could get it back into shape.” This left fifty or so members without playing facilities until it dried out.

One contractor working with London councils has among the sites under their watchful eye many of the city's sports pitches, of which there are ninety-five football pitches, ten cricket squares, bowling greens and running tracks.

"A lot of the sites are on made up ground and experience major problems with drainage," says their parks officer. "We have carried out aeration down to 300mm, but it's not enough to get to the pans."

So what's the answer? Terrain Aeration has a range of machines with the ability to send a probe

to a depth of one metre. It penetrates the ground with the help of its built-in JCB road breaker, reaching the pan. Here it injects compressed air, working on a grid system and fragmenting the ground into fissures. These interlink to help restructure the soil and let in vital oxygen. Turf roots will grow stronger and uniquely the soil structure is kept open by Terrain Aeration's Terralift machine process, which has proven itself over the past 30 years. With the Terralift's probe reaching 1m depth, it's also the perfect way to help move excess water away from stagnating around tree roots.

Flood waters are heavy enough to force the oxygen out of the soil structure, leading to dead or dying turf and trees showing signs of severe stress, leaf fall and rotting roots.

By going deeper than the growing roots, excess water can percolate away and save the roots from rotting. Again, vital oxygen is injected into the soil along with other products to help with the root system in re-establishing itself. The results being a healthier and stronger root growth, a





Terrain Aeration has a range of machines with the ability to send a probe to a depth of one metre.

visibly stronger canopy and even more fruit on the trees. Diseases such as Phytophthora (water borne problems for Yew trees) can be stopped as opening the soil structure and injecting oxygen back into the soil is beneficial to the health of the tree. In the above examples, Terrain Aeration's system has come to the rescue after the flood for sports grounds, parks and even new-build gardens for major housebuilders' developments.

www.terrainaeration.co.uk



THE BEFORE AND AFTER OF ONE METRE DEEP AERATION

**COMPACTION AND WATERLOGGING STOP PLAY.
DOWNTIME COSTS MONEY.**



Terrain Aeration's long-term treatment reaches one metre deep where compressed air blasts the compaction.

The soil is opened up for good drainage and a healthy sward with minimum disruption.

We have been successfully deep aerating sports turf, bowling greens, golf courses, parks, racecourses, trees and gardens for over thirty years.

See us at work:

www.terrainaeration.co.uk

Call us for a quotation 01449 673 783



Only the best Groundwork, Drainage and Pipework products

Rouden Pipetek Ltd supplies and distributes Drainage and Pipework products from the UK's leading manufacturers. We predominantly distribute to groundwork, construction, civil engineering, and agricultural companies. We are committed to providing a first-class service and competitively priced products to all of our clients. Due to our longstanding presence within the industry (we commenced trading in May 2001), we have become reliable distributors to some of the smallest and largest businesses in the UK. Whether your requirement is for a length of pipe or a motorway drainage system, our sales team can provide a cost-effective solution to suit your needs.

To ensure our products reach you as quickly as possible, we have three Branches in the South of England. These are located in Horsham, West Sussex, Maidstone, Kent, and Petersfield, Hampshire. All of our large storage and distribution sites are fully stocked, and boast a vast and comprehensive range of pipework systems and associated products.

“

Whether your requirement is for a length of pipe or a motorway drainage system, our sales team can provide a cost-effective solution to suit your needs.

Rouden Pipetek offers a next day delivery service, with other delivery options available depending on customer requirements. Our fleet of specialist delivery vehicles and fully qualified drivers, get the products to our customers safely and efficiently.

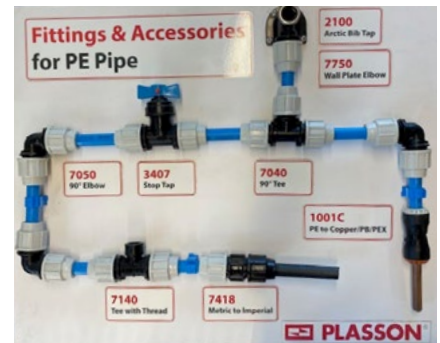
Rouden Pipetek is a one-stop facility for civil engineering, building and construction companies, whilst also supplying, sports ground contractors, utility and telecommunications contractors. We are also proud to supply specialist water feature and building services companies, as well as agricultural contractors.

Our product range includes, but is certainly not limited to the following;

Foul Water Drainage Systems (plastic & clay), Surface Water Drainage Systems, Twinwall Service Ducting, Street light and Traffic Signal Ducting, Land Drainage Pipework and Geothermal Heating Systems.

We also offer a Specialist Fabrication service, Barrier Pipe Systems, Sewage Treatment Plants, and Manhole Covers and Frames. Other lines include Linear Channel Drainage Systems, Grass Reinforcement, Geotextile Membranes, Attenuation Crates and PVCu and ABS Chemical Pipework Systems. For a comprehensive list of our products and further information, simply visit our Products page.

mail@rouden.co.uk
www.rouden.co.uk



ROUDEN PIPETEK

The largest independent pipework supplier in the south of England



Rouden Pipetek is a one-stop facility for civil engineering, building and construction companies, additionally supplying to sports ground contractors, utility and telecommunications contractors. We also supply to specialist water feature and building services companies, as well as agricultural contractors.

For a comprehensive list of our products and further information, simply visit our website.



Petersfield

New Barn,
Ham Barn Business Park
Farnham Road, Petersfield,
Hampshire GU33 6LG
01730 777 350

Pease Pottage

The Orchard, Brighton
Road, Pease Pottage,
Crawley, West Sussex,
RH11 9AB
01403 275 276

Maidstone

Detling Aerodrome Ind. Estate
Detling, Maidstone,
Kent ME14 3HU
01795 843 866

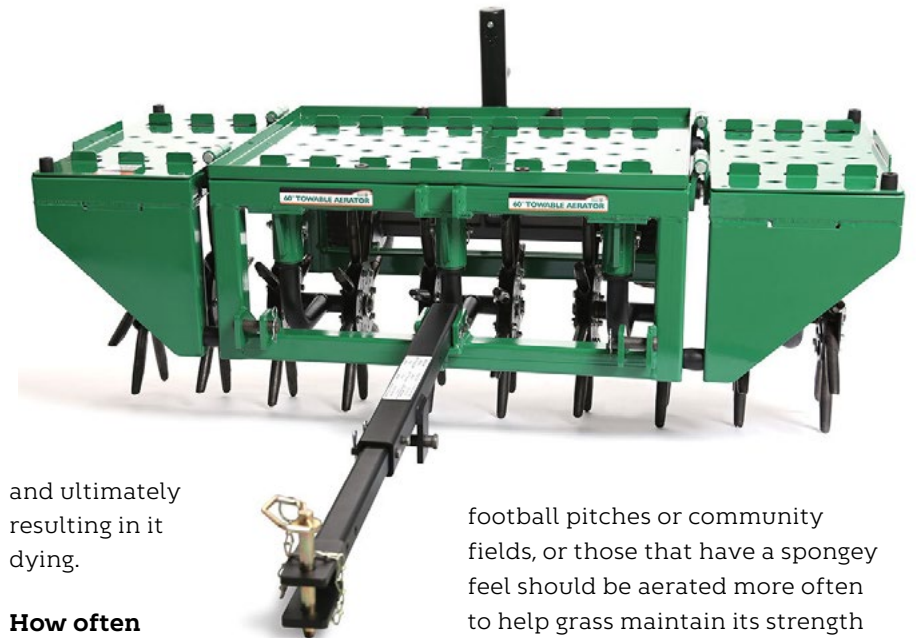


The importance of aeration for your lawn

Aeration is an important process in encouraging the growth of strong grass as it allows air, water and nutrients to penetrate the grass root, so it's a vital part of achieving thick, lush lawns.

What is aeration?

The process of aeration involves piercing the soil beneath the grass with small holes so allow air, water and nutrients can penetrate it. All of these elements are vital in helping grass roots to grow deeply whilst producing strong, vigorous and sprightly grass. Aeration should be undertaken to alleviate soil compaction as even slightly compressed soil can obstruct these important elements from reaching the grass roots. This means that grass will struggle to maintain its health during hotter weather and heavy rainfall, causing a risk of deteriorating quality,



and ultimately resulting in it dying.

How often should lawns be aerated?

Lawns and turf should be aerated at least once annually to maintain the penetration of water and fertilisers to the grass root. However, lawns that are regularly used, such as

football pitches or community fields, or those that have a spongy feel should be aerated more often to help grass maintain its strength and vibrant colour. Prime growing seasons, including early spring and autumn, are the optimum times to aerate a lawn. During this period, grass can recover more quickly and are strong enough to fight off the stress of the aeration process.

The best aerators for a flawless finish

Billy Goat supplies a powerful and robust range of tools for commercial, outdoor and property clean-up and its range of powerful aerators can help to maintain and encourage a strong, flourishing lawn.

For the ultimate experience, Billy Goat's Plugr 25 Hydro Drive Series aerator provides a superior performance and a combination of productivity, operator comfort, variable hole density and is remarkably low maintenance. With the best-in-class controls and in ground steering, the 25 Hydro Drive Series also offers exceptional manoeuvrability and ease in operating.

It also offers The Patent Pending EZ Drop™ tine system which comes complete with a one-step tine

engagement lever. This allows tines to quickly engage when the lever is depressed, but it is also able to rapidly disengage once the lever has been released, so it can pass over any obstacles during aeration making the process smooth and uninterrupted.

For smaller lawns, the Billy Goat 18 Series aerator offers a smaller design but supplies just as much power. The model comes equipped with reciprocating cam tines that propel the unit forward and drive cores up to 7cm deep, meaning water, air and nutrients will be able to travel a sufficient depth to the grass root. With this smaller design, it also offers a lightweight feel so it can be easily manoeuvred around lawns and can reach in smaller, more narrow spaces.

With the ability to cover up to

4 acres an hour, the Billy Goat Towable 60 Series aerator is ideal for maximising large lawn aerations - helping to save time whilst efficiently penetrating the grass root. With the addition of swivelling tine assemblies, this model operates with ease and is able to provide a quality aeration pattern of up to 4cm deep. The Towable 60 Series can also be mounted onto a standard tow bar or category 1, 3-point hitch and can run behind any type of tow vehicle, with the ability to run up to 8 km/h - offering a powerful and timely solution for aerating larger patches of lawn.

Billy Goat products are available nationwide through Henton & Chattell's dealer network. For more information and to see videos demonstrating their performance visit www.billygoat.co.uk.



“

For smaller lawns, the Billy Goat 18 Series aerator offers a smaller design but supplies just as much power. The model comes equipped with reciprocating cam tines that propel the unit forward and drive cores up to 7cm deep, meaning water, air and nutrients will be able to travel a sufficient depth to the grass root.

Grass Plant Ltd praise Redexim Verti-Drain® for high speed and versatility

A

fter 15 years of reliable service running a fleet of smaller Redexim Verti-Drain® models

Martin Guy, owner of Grass Plant Ltd, comments that the addition of a high-speed Verti-Drain® 2519 has brought new-found efficiency to both internal contracting operations and external hire projects... so much so, that plans are already in the pipeline to add more!

Martin leads a team of 25, undertaking construction and ongoing maintenance of all types of natural turf sports surface, working with venues across the Southeast. "Across the board, agronomic expectations are on the rise but due to play demands and climatic conditions, the time available to deliver these standards is getting ever smaller" he explains. "This meant increasing demand was placed our high-speed aerator, but the competitor model we were running was not delivering what we needed it to. As soon as the 2519 was introduced we were straight onto our local Redexim Partner Tuckwells, and we were one of the first to try it."

Offering a PTO speed of up to 540rpm, the Verti-Drain® 2519 can cover up to 8739sq.m per hour when spaced at 165mm making it the most productive aerator in its category. Its ability to accept a range of tine options and working to variable depths of up to 250mm mean the 2519 is well suited to an array of applications - something thoroughly tried and tested by the Grass Plant team.



"It's adaptable, which is critical for us considering the broad spectrum of places we work at" Martin explains. "On a golf course for example you can start on a tee, then use the same machine to aerate the fairways and the greens. There are very few machines that allow you to do that."

He continues, "You tend to find that the higher speed these machines operate at, the more there is that can go wrong, but the build quality of the Verti-Drain® is as solid as

ever and, since taking delivery of the 2519 close to three years ago, we've seen very little downtime." This reliability has found favour both internally and with self-drive hire customers. "We get a lot of repeat business on our hire fleet and we wouldn't get that if we were giving them machines that weren't fit for purpose or were falling apart in front of their eyes! Trouble is, everyone is so impressed with just how much the 2519 can do that now we need more of them!"

www.redexim.com

DTA delivers robust reliability on hire and contracting fleet of Cleveland Land Services

Tasked with delivering reliability and efficiency for both contracting and self-drive hire, a Deep Tine Aerator (DTA) from GKB Machines has so far ticked every box for Cleveland Land Services in Teesside. Purchased to replace another aerator in the summer of 2021, the robust versatility of the 2.1m DTA has seen it well used on a variety of projects and sports surfaces including football, racecourses and golf course fairways.

Cleveland Land Services have earned a reputation for industry-leading innovation and outstanding customer service across their three divisions - CLS Landscape & Earthworks, CLS Sports and CLS Selfdrive - providing a high-standard of completion on all projects, undertaken nationwide, for over 50 years. With an equipment bank spanning the group, it was the task of Andrew Willis, General Manager of the Selfdrive division, to find the replacement for a well-utilised aerator on their hire fleet.

We've been using it on our own contracting work, primarily football pitch maintenance, and when not used internally it's been on hire with a whole host of turf managers who all find the machine incredibly efficient and simple to operate.



He explains, "We had a good look at the alternatives and, following a demonstration of the DTA 210 from local dealers Russells, decided that the price, the build quality and the specification of the DTA was a great fit for us. With a range of operators and applications, we could tell this would be capable of delivering any and every task we put it on."

The DTA 210 combines a 2.1m working width and maximum working depth of up to 40cm (16") making it an excellent solution for large and/or heavy compacted applications. One of a range of deep tine aerators from GKB, the DTA features hydraulic height adjustment and a range of tine options for complete versatility - making it a popular choice with contractors.

"We've been using it on our own contracting work, primarily football pitch maintenance, and

when not used internally it's been on hire with a whole host of turf managers who all find the machine incredibly efficient and simple to operate." Andrew continues, "One thing we really noticed was how smooth the DTA runs. There isn't the typical 'bouncing' you get with some brands."

The DTA was the first GKB machine purchased by Cleveland Land Services, more recently joined by an SPM 400 topdresser. "This is another fantastic piece of kit - high capacity and high productivity which is just what we need to ensure jobs get completed on time, and to a high spec." He adds, "The support from GKB and Russells is also brilliant, quickly answering any questions we have and providing valuable advice to keep everything ticking along as it should."

www.gkbmachines.com



Revolutionizing Turf Care

The Eco Clipper Journey

Since 2002, Syb Leijenaar and his companies have transformed turf care, starting with the pioneering GC5. This electric mower, with a remarkable cutting width of 10 metres, emerged from our ambition to improve on traditional cylinder mowers in turf production. Our goal was simple but ambitious: to match the precision cutting of cylinder mowers while eliminating their high maintenance costs and sensitivity to challenging mowing conditions, such as wet grass and weeds.

Fast forward to today, and our flagship model, the Eco Clipper TM14, represents a significant leap forward. With a 14.11-meter cutting width, it offers 40% more efficiency than the GC5, yet remains compatible with the same

range of tractors (minimum 100 hp, ideally 130 hp on flat terrain). This compatibility underlines our commitment to practical innovation.

The Eco Clipper's impact on mowing economics is profound. By combining a wider cutting swath with increased mowing speed, we halve the mowing costs compared to traditional methods. This efficiency is a product of reduced labor and tractor hours. Moreover, the Eco Clipper's drive efficiency not only saves on fuel but also reduces consumption to an impressive 0.2 to 0.4 litres per acre.

Beyond cost savings, the Eco Clipper excels in capacity and cutting quality, making turf care not just economical but enjoyable. Our range isn't limited to large

models for turfgrass growers; we also cater to parks and sports grounds maintenance. Municipalities and contractors praise the Eco Clipper FM4 Sport for its 4.11-meter cutting width, cost-effectiveness, user-friendliness, and resilient cutting quality in various weather conditions and terrains.

An added advantage is the quiet operation of our electrically driven blades. This feature not only saves fuel and reduces maintenance needs but also minimises noise pollution for operators, bystanders, and local residents.

Discover the full potential of the Eco Clipper mowing systems and explore our diverse model range at www.ecoclipper.com, or ask our UK dealer Vanmac Ltd.

Cut Costs, Not Quality—Eco-Friendly Mowing Solutions

Discover how Eco Clipper FM4 Sport Reduces Expenses and Environmental Impact



- Mowing width 4,11m and high mowing speed possible
- Good dispersion of clippings
- Insensitive for weather conditions
- Economical and quiet electrically powered
- Excellent contour following:
- Front-mounted for enhanced visibility and comfort
- Low maintenance needs and easy to use

These features make the Eco Clipper FM4 Sport an ideal choice for groundsman, municipalities, and sports clubs looking for an efficient, economical, and professional lawn care solution.

Eco Clipper FM4 Sport for Sports Grounds

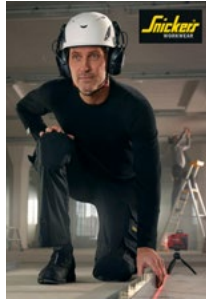
Visit our website www.ecoclipper.com

ECO CLIPPER®

The World's First Work Trousers With Built-in, Certified Kneepads

Snickers Workwear has been inventing and reinventing Work Trousers with Kneepads since 1975.

Renowned for continual innovation, the process continues with the launch of the world's first built-in, certified kneepads which are completely integrated into a pair of Snickers Workwear's premium stretch Work Trousers.



The unique AllroundWork, Stretch Trousers with Capsulized™ Kneepads and Holster Pockets deliver low-profile, comfortable impact protection. They're an innovative combination of cutting-edge sportswear technology coupled with Snickers Workwear's world-renowned comfort, functionality and sustainable fabric design technology.

For more info call the helpline on 01484 854788; check out www.snickersworkwear.co.uk; or you can email sales@hultaforsgroup.co.uk

John Deere 2030A GPS Precision Sprayer

Spray more efficiently and document spray jobs automatically - with the HD200 GPS PrecisionSpray. The factory assembled sprayer ensures a consistent finish for an exceptional customer experience.

Streamlined Spraying

Spray more efficiently with satellite guidance technology, and increase productivity and accuracy while reducing labour and material costs.

Proven Technology

Farmers all over the world use our proven Starfire6000 GPS Receiver and mobile RTK (real-time kinematic). Mobile RTK provides accuracy levels of 2.5cm to ensure the reliability of boundary maps and allow to create spray coverage maps. Thanks to sophisticated RTK signal correction, the exterior, interior and no-spray zones you map won't shift while you work!

MyOperationCenter

Accurate mapping helps you set spray zones and rates precisely. That's good for your budget - and good for the environment.



www.doublea.co.uk



GROUND CARE
Landscaping for the future



AUTHORISED
DEALER 2023



HUSQVARNA PRO RANGE BATTERY SERIES

Offers all the power, performance and intuitive design you expect from Husqvarna

For more information on The Husqvarna Professional Product Range, contact :

Nick Davis - 07500 971106
Lee Mitchell - 07500 787020

SCAG have introduced their first Electric ride-on – the EVZ

- Power is provided by the Vanguard 48V 5kWh Lithium-Ion commercial battery pack.
- 48V 5kWh*
- Estimated productivity of up to 5 acres per charge, though this depends entirely on cut height, terrain and conditions.
- The required Vanguard 1050W battery charger is included with each mower.
- Estimated charging time: 5 hours = full charge / 3 hours = 80% charge

Elsewhere, leaf and debris clearance is still high on the agenda this time of year, and the STM / SCAG range of equipment has proved as popular as ever - with impressive sales in 2022 for the SCAG Windstorm. And impressive is the right word to describe the specification of the machine as well: this is a stand-on unit, placing the operator on a stand at the back with a knee-pad in front, giving an excellent all-round view for the user. The format is based on the SCAG V-Ride mower but, as opposed to a cutting deck, it has a massive cyclone blower on the front, capable of 6000 cfm output. The power unit is a 37HP Briggs Vanguard engine and the operator drives the machine with twin hand levers to twin rear drive wheels to give zero-turn manoeuvrability. Adjustable nozzle direction for the

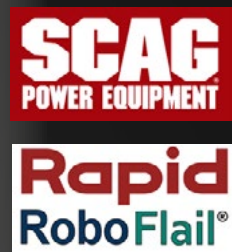


output completes the picture of a well-designed and highly effective leaf and debris clearance machine.

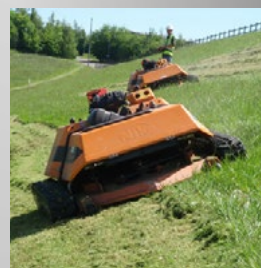
The machines are available through the STM dealership network. To find your nearest dealer ring 01789 488450, email info@st-mach.com or look at our website www.st-mach.com



Debris Clearance Equipment



Pedestrian and Stand-on mowers



Electric and Petrol ride-on plus Remote Control mowers

01789 488450
info@st-mach.com
www.st-mach.com



www.st-mach.com

GreenBest Ltd to Showcase Innovative Fertiliser Solutions at BTME 2024

GreenBest Ltd, a leading provider of cutting-edge fertiliser products, is thrilled to announce its participation in BTME 2024. You can find us at Stand 100, where we will be unveiling our latest advancements in the world of turf care and fertiliser solutions.

One of our company goals is to further expand our organic and biostimulant range and move to more sustainable sources. That's why over the last year we've expanded our Velvit range to include four new organic/organo-mineral products: Shea Spring/Summer, Shea Autumn, Fulvic Acid and Humic Acid.

Shea Spring/Summer & Shea Autumn are meticulously crafted from the byproducts of shea seed processing, often discarded as waste, to create a valuable and eco-friendly resource. Our Shea products demonstrate excellent levels of organic matter, promoting a healthy carbon-to-nitrogen ratio. Available in 1-2 mm and 2-3mm for use on fine turf or larger areas, ask our team for more details.

We have also been working hard to produce content, courses, and webinars for the GreenBest Academy; an educational provision brought to you by our FACTS-qualified team of experts.

Our commitment to sustainability, product quality, and custom solutions has made GreenBest a trusted partner for turf professionals. We invite everyone to visit our stand and discover how our offerings can enhance turf health and performance.



The GreenBest Academy will grow your knowledge in all areas of fertilisers, turf management, lawn nutrition and ornamental horticulture. Find out more about our latest courses in 'Designing fertiliser treatment plans for football/rugby pitches and bowling greens/croquet lawns'.

"We are thrilled to be part of BTME 2024 and look forward to engaging with the turf management community," said James Whittick, Sales & Marketing Director of GreenBest Ltd. "Our commitment to sustainability, product quality, and custom solutions has made GreenBest a trusted

partner for turf professionals. We invite everyone to visit our stand and discover how our offerings can enhance turf health and performance."

Visit the GreenBest team on stand 100 to pick up our latest Velvit product guide and for advice on how to find or become a Velvit distributor. You can also take away a FREE trial pack of our Purity Soil Conditioner, a sample tower of our Velvit Fertilisers and a FREE gift.

sales@greenbest.co.uk
www.greenbest.co.uk
+44(0)1963 364788



Build, Shop and Learn

You can craft your own success story with our bespoke fertiliser services, tailoring nutrition to perfection. Dive into the lush possibilities of our Velvit range, a premium selection curated for your turf's prosperity. Fuel your passion further with the GreenBest Academy, where knowledge blooms and learning comes to life.

Build your Bespoke Fertiliser today

- ✓ Liquid, granular & soluble products
- ✓ Product matching service
- ✓ Runs of any size
- ✓ Label design
- ✓ FACTS-qualified technical advice
- ✓ Own-brand packaging
- ✓ Precision mixing
- ✓ Independent lab analysis



Koro RECYCLINGDRESSER® can be golfs sustainable topdressing method



Now more than ever, golf clubs are battling the rising cost of materials, with sand being one of the highest, but by using the Koro RECYCLINGDRESSER® from Campey Turf Care Systems, clubs can reapprach topdressing.

Whilst the Imants-made machine has traditionally been used on football pitches and larger areas, The Worcestershire Golf Club Course Manager, Steve Lloyd, thinks the process of the RECYCLINGDRESSER® could save up to £2.5k across an 18-hole course.

The RECYCLINGDRESSER® aerates

the underlying soil vertically and horizontally, re-moving soil from the root zone and re-distributing it across the playing surface. Layering and compaction are eliminated, biological activity is increased, and existing fertilisers in the soil are better utilised. The RECYCLINGDRESSER® reduces the amount of new top-dressing required, therefore saving labour and material costs and promoting sustainable maintenance.

The waste of material during hollow tining got Steve thinking about the machine, and after seeing it work on his USGA specification practice green, he sees a place for it in golf.

“If the cost of the material goes up substantially, then you start to question how much of it I need or if there is an alternative way that is more cost-effective, sustainable, and fits both boxes,” Steve said.

“If you hollow tine a lot, probably 80% of what you’re bringing out is good material. Where does that go? Most of the time, it gets thrown away, which is a waste, so I thought about how other sports reuse material, and that brought me to the RECYCLINGDRESSER®.

“The demo on our golf green by Jason Moody Product Specialist for Campey, went really well.

It settled down within a week, and the recovery was really good. We followed up with our usual granular feed and a light top dress the following week to help restore surface levels, which is what we'd do on all the greens anyway."

For Steve, the pressures on sand use will only continue to grow. The cost of raw materials and haulage are already becoming issues, and the demand from other industries, such as construction, means golf is down the pecking order.

With the RECYCLINGDRESSER®, he believes there are two approaches clubs could use that would bring sustainability and financial benefits.

"For me, there are two ways to do it," Steve begins. "You can have half as much top dressing coming in because you'll still need some topdressing, but it'll mean instead of six loads a year, we might just have three, so we've ticked the

“

The RECYCLINGDRESSER® aerates the underlying soil vertically and horizontally, re-moving soil from the root zone and re-distributing it across the playing surface.

box there by getting some fresh material in, but we have reduced our costs while utilising the existing material.

"The other way of looking at it is to carry on with the same number of loads but use the RECYCLINGDRESSER® to get more out. Therefore, you might be able to spread that material over a wider area, and with worm control, the more sand you can get on a golf course, the less impact there is from worm casts.



"That's another element, so there are quite a few layers of this that can be seen as beneficial to golf clubs, especially inland golf courses."

www.campeyturfcare.com



Pitch Perfect at Morecambe Football Club with the OAS Grow-In Renovation Programme

E

FL League Two Club, Morecambe is celebrating the condition of their pitches after

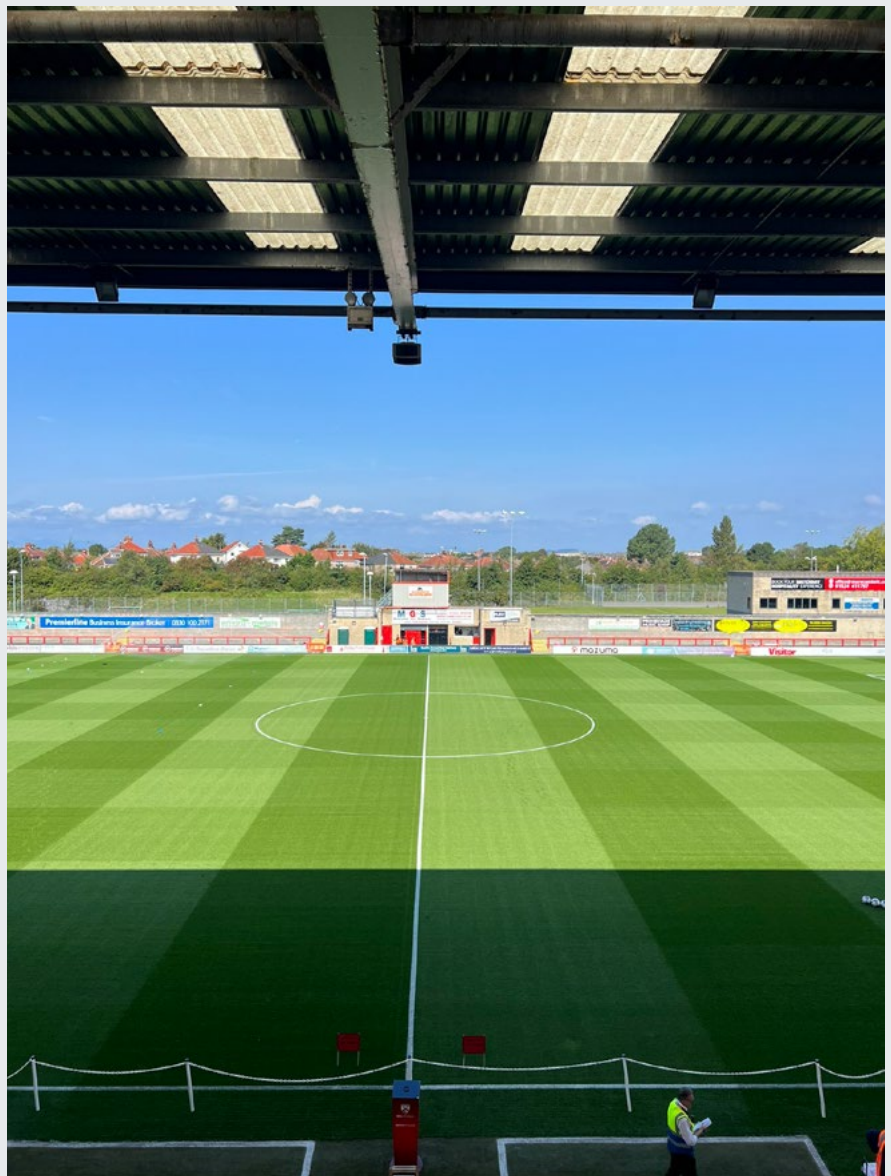
adopting the Grow-In Programme from Origin Amenity Solutions (OAS).

Head of Grounds Rob Davidson comments, "I am over the moon with this year's pitches. I am incredibly proud of the results."

Rob joined the club in 2021 following the renovation period and during the first year he struggled to keep coverage on the shaded area of the pitch.

During a visit to Origin Turf, Science and Technology Centre, Rob had the opportunity to review the research data comparing tetraploid and diploid grass seed mixes.

For his first renovation Rob selected R140 grass seed mix from the R range because of the tetraploid content. He remarks, "Since using R140 at the stadium we have seen improvements in coverage, density, colour and over all turf health, especially in the shaded areas of the pitch. The germination and establishment could not have been better this year."



“Visiting the OAS Turf, Science and Technology Centre has given me additional confidence in the products and the technical support offered by the Origin team has been excellent. With support from Origin, we have tailored the OAS Grow-In plan to suit the pitch requirements. Having a structured Grow-In programme has allowed us to get the best out of the products with a limited budget.”

It’s not just about the products through. Rob adds, “Working with OAS has allowed me to enhance my education and understanding of the products I use and how to get the best from everything I apply. Their events also provide networking opportunities and a chance to meet with peers and form relationships, which I believe is an important part of our industry.”

Rob has used the OAS Grow-In Programme for his second year at the club. The Grow-In programme is borne from extensive R&D at the OAS Turf, Science and Technology Centre. It is a two-step approach which comprises a mix of products to be applied at renovation and at emergence.

The mix for application at renovation stage includes an organic soil amendment - a composted cow manure and Humic Acid soil conditioner, Tricure AD™ Granular - a residual wetting agent, and Mycorrhizal Inoculant - a microbial inoculant.

At emergence, the programme uses an organo-mineral fertiliser and biostimulants that feature nitrate nitrogen and molasses providing early carbohydrates and instantly available nitrogen to promote growth and enhanced plant health.

Rob reports, “The addition of the liquid mix applied at emergence alongside the C-Complex 14.2.5 has



The addition of the liquid mix applied at emergence alongside the C-Complex 14.2.5 has given us a quick grow response.

given us a quick grow response. Cutting schedules have commenced earlier and cutting frequency has meant third leaf stage has been reached quickly to allow for Primo Maxx applications. The biostimulant applications and organo-mineral fertilisers, supported by Verti-drain aeration has promoted a healthy root system.”

Andy Merry, Key Account Manager from OAS said ‘it has been great

working with Rob over the last few years. His professionalism and communication with the club has established a trusting relationship, enabling the renovation work required to produce a surface that performs. Rob is enthusiastic and committed to providing pitches of the highest quality using modern techniques and technology. He has improved the standards across all pitches and produced surfaces that play well and look impeccable. It has been a joy to see the results.”

For further information or to discuss a future Grow-In programme for your club contact the OAS team on 0800 138 7222 or email sales@originamenity.com

www.originamenity.com



Using Attraxor for growth regulation and Poa annua management

After using Attraxor at a previous site, Golf Courses Manager Darren McLaughlan knew well the benefits it would bring - which is why he has been using it on the course at Trump Turnberry in Ayrshire, Scotland, for a full season.

Darren said: "I have been using Attraxor now for three years at a previous site, so I was keen to introduce it to the greens at Trump Turnberry. We have used it for growth regulation and to manage Poa annua seedheads, to improve ground smoothness and playability."

Trump Turnberry is a world-renowned bucket list golf destination. Home to the famous Ailsa course and host of four Open Championships, the resort consists of two 18-hole courses and one 9-hole course. The legendary 7,489-yard, par-71 Ailsa course is known for its tough



opening holes and picturesque views, near the southwest Scottish shores. The quality and standard of the golf green is vital to the site upkeep and reputation.

Darren said: "We recorded growth suppression of average 33 per cent as measured by clip rate, so it's clear that the use of Attraxor plus natural environmental factors have significantly reduced top growth.

The active prohexadione calcium shrinks the Poa seedhead leading to far more consistent ball roll, improved smoothness, and a slight increase in green speed!



We recorded growth suppression of average 33 per cent as measured by clip rate, so it's clear that the use of Attraxor plus natural environmental factors have significantly reduced top growth.

"Playability metrics such as green speed and bobble test rating increased dramatically after one application. Our members have also commented on the difference in the greens and the improvement in their play since we began using Attraxor."

Darren said that the use of Attraxor over time will also allow him to save money and labour

on the greens, with the reduction in clip rate meaning less fuel and manpower would be needed for consistent upkeep.

He said: "This product is a must for any course with even small amounts of the annual biotype of Poa in their sward. Seedheads are our biggest source of irritation when it comes to performance testing during the transition from winter to spring and more common these days even into summer.

Attraxor significantly improved the performance of our putting surfaces which resulted in a better product for our customers.

To find out more about Attraxor, visit www.pestcontrol.basf.co.uk/en/Products/Overview/Growth-Regulator/Attraxor.html#section-benefits

DOUBLE EDGE – Biostimulant

With more and more chemicals being withdrawn from the market, groundskeepers are turning to biostimulants to feed, strengthen, and protect against disease. The need to follow an IPM program is now more important than ever and being more environmentally conscious this isn't such a bad thing either. Using DOUBLE EDGE in a regular spray program will cut the need for conventional chemistry by strengthening the plant and allowing it to better withstand disease pressures.

David Gray, Golf Courses Manager, Fife Golf Trust said this about DOUBLE EDGE, "Having never used DOUBLE EDGE until this season, I was interested to see the results over our courses and monitor the potential benefits. I have been really impressed and the teams report plant health has been improved, with a good consistent colour. Being such a low



dose rate makes it affordable, but also makes it convenient to distribute to the 7 different sites that we manage, soil structure differing from sandy to clay. The tank mix compatibility is also something we like as this allows us to confidently incorporate

DOUBLE EDGE into our regular foliar applications. We apply DOUBLE EDGE predominantly to our Greens over all 7 courses but in the future, we may extend this out to Tees and Surrounds."

www.upl-ltd.com/uk

DOUBLE EDGE®
 POWERED BY GOACTIV TECHNOLOGY
 AND AMINO ACIDS TO BOOST PLANT HEALTH

B I O S T I M U L A N T

www.upl-ltd.com/uk

UPL Europe Ltd, Engine Rooms, 1st Floor, Birchwood Park, Warrington, Cheshire WA3 6YN
 T: +44 (0) 1925 819999 E: info.uk@upl-ltd.com

Use plant protection products safely. Always read the label and product information before use.
 Pay attention to risk indications and follow the safety precautions on the label. All names are trademarks of UPL. © UPL Europe Ltd 2024.



Cub Cadet®

ZERO-TURN

100% GREAT CUT

MAX MANOEUVRABILITY

MAX POWER

MAX COMFORT



**100%
INTERESTED?
BOOK YOUR
DEMO NOW**

WWW.CUBCADET.CO.UK/BOOK-A-DEMO

Trio of INFINICUT's deliver impressive cut quality and battery life for Hallamshire Golf Club



T

Three 22" INFINICUT® golf cutting units are described as delivering outstanding cut performance on the 18 greens of Hallamshire Golf Club. The trio of battery powered mowers are the latest step in the club's environmental strategy and

are giving Course Manager Ben Burrill and the team not just quality of cut, but enough run-time to mow all greens and return to the shed with as much as 60% charge remaining!

Nestled between Sheffield and the Peak District National Park, Hallamshire's heathland course boasts year-round condition, with their greens renowned in the region for speed and consistency. Proudly hand-cut, this has been executed with the new fleet of INFINICUT 22" mowers, since their delivery in May 2023 by local dealers Balmers GM. "Our previous pedestrian mowers were reaching the end of their working life and, with the club actively encouraging more sustainable alternatives, I had demonstrations of the different battery options available" explains Ben. "The price point of the INFINICUT was better and, compared to the other brands we tried, the battery life impressed us straight away."

"In practice, we can get as many as nine greens done with one mower which, with three in the shed, is above

and beyond what we need. Even working on a 25% reduction in battery life over the next five years, we'll still be able to cut all 18 greens relatively comfortably." He continues, "Charging them has just become part of the daily routine. They return to the shed with anywhere between 40-60% charge left, we plug them in, and they quickly get to full charge and sit ready for the next day."

Launched in early 2023, the INFINICUT 22" cutting unit promises even more refinement for turf management, incorporating many of the features synonymous with the INFINICUT range together with precise cut quality from the dynamically-balanced SMARTCut™ reel. "We opted for the 14-blade cutting reels which increases the clips per inch and works really well for us, delivering an outstanding quality of cut and finish."

"We were also able to specify 3mm groomer spacing to manage the lateral growth on our bent greens which other manufacturers would have been unlikely to be able to accommodate." Ben adds, "The team have been very impressed with the simplicity in functionality, things like the sensor in the floating head which automatically slows the mower down when lifted for easier end of line turning. They're well designed and will be critical to the delivery of our course, in a more environmentally-friendly way, for the years to come."

www.infinicut.com

Framlingham College achieve both flexibility and finish with their new TDR-X

Less than a month since its delivery, the Head Groundsman at Framlingham College claims the Progressive TDR-X contour mower has exceeded the expectations of him and his team. Jason Wright explains how the TDR-X is ticking the boxes of build quality, manoeuvrability and high standard of finish since taking charge of the cut and presentation of close to 80 acres of college grounds.

Once part of the castle estate, Framlingham College now comprises of two sites – the main college catering for students aged 13-18 and the Prep School, four miles down the road at Brandeston Hall, taking pupils from the age of three. Sport plays a big part in the student experience at both sites, with Jason and his team of three full-time grounds staff maintaining athletics, cricket and hockey surfaces in the summer, then switching to rugby during the winter months. After encountering some age-related faults with their previous mower, the time came for Jason to explore the alternatives. “We wanted something that would be quicker, easier and cheaper to maintain while still giving us a quality finish” he explains. “We demonstrated various makes and models but agreed that the Progressive was the most manoeuvrable and would be the most versatile to use on both our sports and wildlife areas. It also suited us weight-wise to work alongside our existing tractor and fleet of equipment.”

The Progressive TDR-X, exclusively available from Vanmac UK, features three independently floating decks which promise to closely follow undulations, delivering a total cutting width of 3.2m and easily adjustable cutting height range of between 10mm and 85mm. Along with other machines in the Progressive range, the TDR-X features Pro Lift-N-Turn™ technology, which enables the operator to temporarily lift the decks with the PTO still engaged, increasing overall productivity.

“Tomlinson Groundcare Ltd delivered our TDR-X at the end of June and after some very good training, we put it to work straight away. We’ve found already that set-up and changing the height of cut takes less than five minutes to do, where previously this would have taken half an hour. We’ve also used it in the wet with impressive results which wouldn’t have been feasible before.” Jason adds, “In addition, it gives us the ability to lift the height to maintain our rough areas which has been another plus – the versatility we have with this as an all-around machine versus our previous fine turf mower.”

“People have been commenting on how well presented the site is, which is a big compliment for the Progressive, given the rise in quality we’ve achieved since switching from a cylinder to a rotary cut!”

www.vanmac.co.uk





CEORA™

Breaking boundaries

H

USQVARNA, the pioneer in smart commercial grounds care and robotic mowing has been breaking boundaries

with the integration of its new low-cut deck for the golf market, enabling the newly introduced professional robotic mower, CEORA™ to effectively manage more areas of the golf course, cost-save and improve the playing experience.

With a capacity of up to 25,000m² per day, CEORA™ is equipped with a 43L cutting deck, capable of working day and night.



The cutting deck is not limited to mowing fairways. With an electric cutting height adjustment system, the same robotic mower can operate fairways, semi-rough and rough, as well as other golf areas, at cutting heights from 10 to 60mm.

The autonomous, battery-powered mower enables more frequent mowing, as well as being able to minimise noise pollution and reduce CO₂ emissions by as much as 83% during the machine's lifecycle compared to an equivalent diesel Husqvarna P 525DX ride-on mower.

Mowing can make up almost half of a golf course's budget and by automating the mowing with a Husqvarna robotic mower, course managers can free up time for staff to focus on more skilled jobs and also experience significant



CEORA™ can navigate with a precision of 2cm, thanks to the satellite navigation system EPOS™ which uses GPS coordinates to map out the mowing areas.

cost savings, while retaining and improving turf quality. It is estimated users could achieve cost savings of up to 30% through the use of CEORA™, compared to a conventional commercial mower*.

CEORA™ can navigate with a precision of 2cm, thanks to the satellite navigation system EPOS™ which uses GPS coordinates to map out the mowing areas. Virtual

boundaries offer a high level of consistency, flexibility and reliability, with the mower able to be scheduled to operate in specific areas at different height settings, either on demand or according to different schedules.

Husqvarna also offers other robotic mowers to complement CEORA™ on golf courses - Automower® 535 AWD is perfect for steep areas that can be hard to maintain, on semi-rough and other parts of the course, while Automower® 550 EPOS efficiently handles smaller complex areas on fairways and semi-rough, of up to 5,000m².

To get in touch with your local Authorised Husqvarna dealer and find out how CEORA™ could benefit your golf course, visit www.husqvarna.com/uk.



Kubota launch their latest generation of zero-turn mowers

Kubota fully supports the declaration of the world becoming a fully sustainable carbon neutral environment by 2050. In conjunction with world demand on zero emissions, Kubota has **K** to deliver and meet the customer's needs for a productive, efficient and durable machine. The Ze electric zero-turn models not only meet productivity requirements, but also with a higher level of operator comfort through reduced noise levels and less vibration during operation.

Together these mowers are specifically aimed at environmentally conscious customers such as municipalities, professional contractors and residential owners that want to maintain large lawn areas with reduced maintenance, simplified operation and higher levels of operator comfort.

The engineering development of the Ze range began back in 2017 where the key requirements always remained the same and that is a machine that can operate for a full working day providing excellent driver comfort and outstanding cutting quality. Testing has been carried out throughout Europe to ensure that the performance is consistent whether it is in wet tall grass or dry rigid grass.

Silent power

The "heart" of the Ze is a 48V / 10kW battery which is located at the rear of the machine, pretty much where an engine would sit. This battery has the capacity for over 15 000m² of mowing operation. The Ze has a unique

feature in that the battery pack can be quickly and easily removed and another fully charged battery fitted. A second battery and fitting trolley is available which will allow the operator to work continuously during the busy grass cutting season.

Recharging of the battery can be done from the charge connector on the Ze or independently away from the machine.





Testing has been carried out throughout Europe to ensure that the performance is consistent whether it is in wet tall grass or dry rigid grass.



A charger which is compatible with both European and UK domestic plugs is provided and a full battery recharge takes approximately 5 hours.

Electric drive

There are a total of three electric drive motors on the Ze. Two drive motors (one for each wheel) and one drive motor for the mower deck. The battery discharge can be optimised as the drive power to the cutting deck can be adapted to suit the working conditions. There is a choice of three working modes - ECO, Standard and Boost. The key difference is the blade speed and the mode can be set according to the work required.

High quality cutting performance whatever the conditions

Kubota know how and technology is incorporated into all areas of

these machines. A prime example is the K-sense. Forward speed to deck cutting speed is continuously monitored to provide optimum performance. Should the deck encounter a heavy load, the forward speed would compensate and slow down to ensure the best possible cutting quality. When the load reduces the travel speed automatically increases.

The Ze Series is available with 42" or 48" side discharge mower decks. Both deck options can be fitted with a mulching kit.

Simplicity and comfort incorporated

The deck lifting and lowering is a low effort foot pedal control. Quick-dial deck height setting adjustment ensures cutting height can be set quickly and easily. When the motion drive levers return to neutral the auto

parking brake is engaged for safe dismount.

A deluxe high back seat with position adjustment, armrests and additional lumbar support ensures ultimate comfort.

Right from the start of development, the engineers knew that meeting the environmental targets set could not be at the expense of productivity, performance and comfort. The end result is the Ze Series which incorporates the best of both.

These new products will be presented for the first time at Saltex in UK, Agritechnica in Germany and Paysalia in France. They will be available on the market from April 2024.

www.kubota-global.net

From the ground up: 65 years of supporting sport

S

pecialising in sports pitch construction, O'Brien Contractors Ltd, has supported the development of sports facilities

at all levels; from Premier League side Aston Villa Football Club and the Old Saltleians RFC, through to where sporting journeys begin at Northampton Boys College, and Solihull School St. Martin's campus. With the right combination of time, experience and touch, each project has helped support the development of the environment that shapes international sports stars and those in training alike, helping generations of sporting professionals.

In celebration of O'Brien Contractors 65th year, we look at some sporting highlights:

Aston Villa Football Club

O'Brien Contractors were instructed by one of the country's most prestigious Premier League football clubs, Aston Villa, to deliver a complete earthworks and ground remediation strategy. The team worked as the principal contractor to design and complete the side's £14m training ground.

With the site originally used as a sand and gravel quarry, there was an opportunity to use repurposed existing material throughout the works, bringing down costs and simultaneously minimising the overall carbon impact. Additionally, the site was surrounded by



Aston Villa FC

important biodiversity features, including protected lakes and pools for wildlife breeding and an ancient woodland. This required protection measures to be put in place to ensure that the natural surroundings were not adversely affected.

Best in class results require experience and knowledge. From taking measures to protect watercourses and planting nappies to prevent oil or fuel dripping into the ground, to only undertaking vegetation clearance outside of nesting season unless a certified ecologist was present, O'Brien Contractors' nature-conscious approach reflects its commitment to the natural environment right from the start.

Due to the success of this project, O'Brien Contractors was awarded a further design and build contract to deliver the complete Academy Club building, alongside additional

upgrades to the club's grounds. This included constructing a 1,000m² steel frame clad building, track facilities, pitch floodlighting and a player monitoring system, all in line with the top-level requirements of the Premier League side, resulting in a world-class facility.



Old Saltleians RFC

A Sports and Play Construction Association (SAPCA) winning project, O'Brien Contractors worked as principal contractor on the development of a new clubhouse and rugby ground, spanning a total 17 acres.

Combining its extensive experience in civil engineering and construction with sports pitch expertise, O'Brien Contractors provided the players with a state-of-the-art facility, including three senior pitches, three junior pitches and two dedicated mini-rugby pitches with floodlighting throughout. The project also included a clubhouse fitted with changing rooms, a gym, bar, office space and storage, as well as extensive car and coach parking, and hard and soft landscaping throughout.

Despite battling the 40°C heatwave of June 2022, the newly created and existing ponds were successfully used for rainwater irrigation that supported the hydration of freshly planted grass seeds, meaning that the pitches were ready for a winning home game that December.

Northampton Boys College

O'Brien Contractors was tasked to create a new sports facility that nurtured talent at the start of their sporting endeavours. Part of a £28 million new modular build campus for the school, the £2.1m project included the development of 40,000m² of natural turf pitches, a full size 3G synthetic surfaced football pitch with associated lighting and fencing, and a 62m x 36m "Leisuretex" surfaced multi-use



From premier league pitches to introducing students to the world of sport, O'Brien Contractors knows what it takes to impress.

games arena (MUGA) designed to facilitate sports such as tennis and netball.

O'Brien Contractors has worked with the client and the college over the course of two years, providing the right expertise to plan, design, and prepare a best-in-class facility. With the college possessing limited knowledge in project management and construction, the contractor drew on its team's extensive experience in total sports project solutions to bring the client's vision to life. To do this, the in-house team provided a bespoke design package, including earthworks modelling for natural pitches, along with extensive drainage design.

The facilities are due to be completed by September 2024, ready for the school's grand opening.

Solihull School

O'Brien Contractors won their fifth contract with Solihull School for

the delivery of a full refurbishment of sports facilities, including a groundsman building and additional onsite landscaping.

Working in a live school environment poses challenges, however, with morning and evening timed deliveries and effective banksmen control, O'Brien Contractors ensured that construction processes had no effect on the school or pupils.

The project provided the school with a 'Sports England Standard' approved pitch, complete with a Sustainable Drainage System (SuDS) that tackled a previous issue with standing water. The groundsman facility was designed in a natural shade of green to blend in with the surrounding environment, and included solar panels to support the school's sustainability goals.

From premier league pitches to introducing students to the world of sport, O'Brien Contractors knows what it takes to impress. By combining the right people with the right technology, the team has delivered a number of industry leading facilities that will continue to support and nurture some of the country's best sportspeople for decades to come.

www.obriencontractors.co.uk



Northampton Boys College



Solihull School



Get set for new synthetic standards with the Redexim Verti-Top™

The understanding of the health and environmental issues associated with artificial surfaces, in particular micro-plastics and polymeric infill, is driving the industry towards a different specification of surface - in turn changing the requirements when it comes to maintenance. In response, Redexim have updated a number of machines across their synthetic portfolio, including their popular Verti-Top, to ensure optimal performance on new pile heights and natural infills.

Lower pile height and a combination of sand and natural infill such as cork and pine is widely expected to become the industry standard over the next decade. Fields with this natural infill will need more attention than conventional SBR pitches due to their more mobile nature, and increased

Lower pile height and a combination of sand and natural infill such as cork and pine is widely expected to become the industry standard over the next decade.

susceptibility to bacterial and airborne contamination. For maintenance, this means that the conventional approach involving regular brushing will no longer be sufficient to maintain surface performance and player safety.

Cleaning equipment such as the Verti-Top™, previously considered a more 'specialist' tool, will therefore become a weekly usage item as grounds staff work more intensely to avoid the health risks associated with natural infill. The Redexim Verti-Top™ utilises a

powered rotary brush to sweep the carpet, lift the pile and extract the top 1-15mm of infill, along with any contaminants. The infill is passed over an oscillating sieve to separate any detritus while an integrated vacuum effectively removes smaller particulates such as dust and hair into a washable bag. The cleaned infill is then dropped and brushed back into the surface, leaving a clean, level and aesthetically pleasing finish.

Available in a 1.2m or 1.8m working width, the Verti-Top™ offers a complete cleaning system suitable for all types of synthetic carpet. It is also available in a dedicated Tow Behind format, utilising a 6.5hp engine, thereby increasing versatility and reducing weight by eliminating the requirement of a PTO.

www.redexim.com

+ WWW.MULTIMOVER.CO.UK

MULTI-MOVER
UK



ELECTRIC TOW TUGS



MOVE EQUIPMENT QUICKLY, SAFELY AND EASILY WITH A MULTI-MOVER ELECTRIC TOW TUG.

The range of Multi-Mover electric power tugs allow groundskeepers to push and pull lighting rigs and other wheeled equipment on turf. Our machines are specially adapted with grass safe tyres, ensuring no turf damage or signs of use. Easily operated, our movers do not require a driving licence, are silent, emission free and have more than a day's use from just one charge.

We understand that sometimes you may require a custom moving solution, at Multi-Mover UK we can do just that. From hitches to wheels, remote controls and more – We can build a machine to your exact needs.

FIND OUT ABOUT THE FULL RANGE OF MATERIAL HANDLING PRODUCTS:

WWW.MULTIMOVER.CO.UK | +44 (0)1952 771264 | SALES@MULTIMOVER.CO.UK



GROUNDSKEEPING

JOURNAL



The UK's latest bi-monthly publication providing latest product innovations, industry news and opinions from key professionals within the industry.

With focuses on Aeration, Irrigation & Drainage; Greenskeeping; Latest News; Machinery; Pitch & Line Marking; Specialist Mowers; Sports Ground Equipment; Sports Pitches; Top Dressing; Sprayers & Spraying and Turf Management.

FREE DIGITAL MAGAZINE SUBSCRIPTION

Subscription enquiries:

Call 01304 806039

Email: info@mhmagazine.co.uk

Advertising enquiries:

Lee Martin – 01227 936974

Email: lee@groundskeepingjournal.co.uk

Editorial submissions or enquiries:

Antony Holter – 01304 806039

Email: antony@mhmagazine.co.uk



SUBSCRIBE TODAY!