

GROUNDSKEEPING

JOURNAL

£2.95

VOL. 25 | SEPTEMBER/OCTOBER 2024



GROUNDSFEST

Where innovation meets inspiration

SALTEX

Join the industry's largest
free learning event

JCB GOLF AND COUNTRY CLUB

Adopting a sustainable approach
with the help of OAS

XDC

Fully autonomous combo
mower and line marking robot
launched in the UK

PLUS...



DENNIS MOWERS
Dennis Mowers partners
with Edgbaston Stadium



TRIMAX
Pushing the boundaries



JACOBSEN
Fully electrified fleet to
prepare Le Golf National
for international games



Kubota

UPGRADE
NOW!



Invest in the best.

Whatever the task, you can
always depend on a Kubota.

VISIT US AT:

SALTEX

30 & 31 OCTOBER 2024
STAND: C070



Kubota Care

Up to 5yrs warranty available.

*Available on selected models

BOOK A DEMO

Contact your dealer today



www.kubota.co.uk

For Earth, For Life
Kubota

Working in Partnership with



In this issue

Welcome to *Groundskeeping Journal*, the UK's leading bi-monthly publication providing latest product innovations, industry news and opinions from key professionals within the industry. With focuses on Aeration, Irrigation & Drainage; Greenskeeping; Latest News; Machinery; Pitch & Line Marking; Specialist Mowers; Sports Ground Equipment; Sports Pitches; Top Dressing; Sprayers & Spraying and Turf Management.



15 Vanmac

Nothing beats the ProFlex 120 for Mid Herts Golf Club!

18 SALTEX

Join the Industry's Largest Free Learning Event at SALTEX 2024

44 GMA

Uniting the industry, powering progress

46 ZLine

Labour saving bunkers at busy Duran

48 Origin Amenity

JCB Golf and Country Club adopts a Sustainable approach with the help of OAS

50 Groundsfest 2024

The Landscape Zone at GroundsFest 2024

86 INFINICUT

INFINICUT® mowers enter Home Park two by two

87 GKB Machines

GKB fleet tackles multi-use maintenance at Leigh Sports Village

88 SIS Pitches

Global sports pitches leader announces Saudi Arabia ambitions

90 Kubota

Kubota tractors prove to be the workhorses for Warwick Castle

Reimagining
turfcare, together.



First-rate cut,
zero emissions

**The all-electric Toro Groundsmaster e3200.
All-day power, all-day performance.**

For 50 years, you've relied on the Groundsmaster range for a first-rate cut. Now it's evolving. Powered by HyperCell® technology, our first battery-powered out-front rotary mower offers the performance and cut you know and love – but with zero operating emissions and a significantly quieter ride.



40 YEARS OF WORKING TOGETHER

reesinkturfcare.co.uk

Contact Us

Enhancing Quality Sports Services

Hello and welcome to Groundskeeping Journal. Our publication has been created to showcase the very latest industry news and product information from the Groundskeeping sector.

In each edition we carry in depth articles from some of the industry leaders, the articles cover many aspects of Groundskeeping with some offering tips and advice on Sports Pitches, Turf Management, Greens Keeping and much, much more. Whether you are looking for tips and advice on creating the perfect green or looking to source



the right product for your synthetic surface GKJ has it all.

Our vision is to connect our readers with professionals and suppliers working within their sector and we hope that we have created a platform that will become a must have tool for anyone working within the industry.

Many thanks for taking the time to read our publication, we hope you enjoy the read and if you would like to keep up to date with all things GKJ then make sure you check out our subscribe page.



Follow us on our Social Media



@gkj_mag

Contact the Groundskeeping Journal team below:

Editor-In-Chief

Antony Holter
editor@mhmagazine.co.uk
01304 806039

Editor

Emma Page
emma@groundskeepingjournal.co.uk
01304 806039

Publishing Director

Martin Holmes
martin@mhmagazine.co.uk
01304 806039

Sales Director

Lee Martin
lee@groundskeepingjournal.co.uk
01227 936974

Business Manager

Josh Holmes
josh@mhmagazine.co.uk
01304 806039

Studio Designer

Richard Bland
richard@mhmagazine.co.uk

Digital Manager

Jamie Bullock
jamie@mhmagazine.co.uk
01227 936971

Accounts Department

Alison Holmes
accounts@mhmediaglobal.com
01227 936971

Every effort is made to ensure the accuracy and reliability of material published in Groundskeeping Journal however, the publishers accept no responsibility for the claims or opinions made by advertisers, manufacturers or contributors. No part of this publication may be reproduced or transmitted in any form or by any means, mechanical, electronic (including photocopying) or stored in any information retrieval system without the prior consent of the publisher.

Overseeding

Overseeding is best carried out in the spring or autumn when weather conditions are conducive. Each grass has its own optimum temperature for germination so getting this right is essential.

Before starting, ensure that everything is in place for a successful overseeding.

Consider which seed is most suitable for your surface and what it's being used for. Grass breeders have developed some fantastic grass mixes as well as dwarf ryegrasses; some having leaves as fine as fescue, which is more disease resistant and can be happily mown down to 4mm.

The quality of your turf starts with choosing the right seed in the first place. As well as looking at cultivars it is important to pick a seed that has the highest purity so that you are not planting weed seeds, chaff or annual meadow grass.

Seed contains its own bank of nutrients and all it needs to germinate. Seeds do not need to be coated in fertiliser; this just means that you get less seed for your money. A pre-seed fertiliser can be used just before seeding to encourage strong growth once seed has germinated. Seedlings need a balanced NPK fertiliser to allow root and shoot growth. Avoid any applications of Sulphate of Iron as

The quality of your turf starts with choosing the right seed in the first place. As well as looking at cultivars it is important to pick a seed that has the highest purity so that you are not planting weed seeds, chaff or annual meadow grass

Guidance on germination temperature

| Grass | Minimum | Optimal |
|---------------|---------|---------|
| Perennial Rye | 5°C | 10-20°C |
| Fine Fescue | 10°C | 14-18°C |
| Bent | 12°C | 16-22°C |



this can dry out and desiccate the leaf.

For a seed to germinate and establish it needs to be planted in a rootzone, kept moist and have sufficiently warm temperatures. A new seed needs to grow in soil and is unlikely to germinate successfully in a compacted thatch layer. Before overseeding, prepare the ground by scarifying to remove as much thatch as you can. Ensure that the moisture levels are adequate and are maintained from sowing right through to full establishment.

Seed needs to be planted at the correct depth into the rootzone, if there is some thatch present then plant into the soil below the thatch layer. There is a variety of great seeders on the market, including disc, dimple or slot to suit every situation.

Recommended planting depths:

Bent - Soil contact

Fescue - 8mm to 12mm

Rye - 10mm to 15mm

Professional soil moisture meters are a great tool to check soil moisture levels before, during and after germination. An important thing to check is that soil isn't hydrophobic, if this is the case it will need a curative wetting agent such as Aquatrols Aqueduct liquid or Aqueduct Flex granules. Once the soil is moist it is good practice to maintain moisture levels with a quality wetting agent such as Prestige Super Replenish Plus, Aquatrols Zipline or ICL H2Pro TriSmart.

To further aid establishment, apply Primo Maxx II at half standard recommended rate five days before overseeding and again two weeks later. Primo Maxx II holds back the top growth and allows new seedlings more room to establish without competition for light and with no detrimental effects on seed germination.

For more information on overseeding or wetting agent options, contact a Collier Turf Care Area Sales representative or our office on 01328 700600 sales@collier-turf-care.co.uk



**COLLIER®
TURF CARE**

Marathon ALGAE **SPORT**

The solution for environmentally-friendly, healthy, resistant turf!



Suitable for
fairways and
tees

| Formulations |
|--|
| 7-13-9 + 3.6% MgO + 0.5% Fe + 0.3% Mn |
| 16-4-8 + 3.6% MgO + 0.5% Fe |
| 7-0-21 + 2.6% MgO + 0.5% Fe |
| 7-6-14 + 2.8% MgO + 0.5% Fe |
| 9-3-9 + 2.2% MgO + 0.6% Fe |

With formulations suitable for sports pitches, golf fairways, greens, tees and other fine turf applications the Marathon Algae range from Olmix has everything you need to cause Grass Envy.



Suitable for
greens and
tees

Scan for more information on
Olmix Marathon Algae Fertilisers



| Formulations |
|--|
| 7-13-9 + 3.2% MgO + 0.5% Fe + 0.3% Mn |
| 16-4-8 + 3.6% MgO + 0.5% Fe |
| 10-0-15 + 3.1% MgO + 0.5% Fe |
| 5-0-27 + 4.2% MgO + 0.5% Fe |

Original patented organo-mineral fertiliser range with sequential release

Marathon ALGAE **GOLF**

sales@collier-turf-care.co.uk
01328 700600 | collier-turf-care.co.uk

Olmix Plant Care

EXCLUSIVELY DISTRIBUTED BY

COLLIER
TURF CARE



Wiedenmann launches new reverse nozzle for Whisper Twister blower

A 'reverse' nozzle attachment for trailed versions of the Whisper Twister blower will soon be available to order from Wiedenmann UK dealers.

The new 'J' shaped nozzle specifically targets residue debris or leaves underneath the machine. Now the operator no longer needs to make a second trip to tidy up any 'mini' trail of debris left behind under the tractor.

By positioning the nozzle at the side of a verge or roadway and pointing below 'the body' of the blower, the directional nozzle ensures that the entire width of a path is cleared of leaves or debris in a single pass.

This new time-saving option can be fitted retrospectively and easily to existing Whisper Twister blowers.



The standard straight nozzle can be converted in just a few simple steps.

The Whisper Twister has an impressive 180° degrees of swivel and an enormous air output of 200 m³ /min at 50 m/sec. It takes its name from Wiedenmann's super-quiet patented whisper turbine

system allowing operation outside residential areas, school and hospital grounds without adding noise. It fits compact tractors 25 hp and above via standard three-point linkage (Cat. I) via PTO or hydraulics.

www.wiedenmann.co.uk
0141 814 3366 for local dealer

BERTHOUD

SPRAYING SPECIALISTS SINCE 1895

The most **reliable** and **comfortable** sprayers on the market

SALTEX
SPORTS TURF ASSOCIATED LANDSCAPERS
TRADE EXHIBITION
**STAND
F125**

VERMOREL

**JOINTS
VITON[®]
SEALS**
UTILISATION INTENSIVE
HAUTE RESISTANCE
INTENSIVE USE
HIGH RESISTANCE



POWERFUL • ERGONOMIC • PRECISE

PRODUITS NATURELS
ÉGALEMENT - ALSO
COMPATIBLE
NATURAL PRODUCTS



MADE IN FRANCE

GARANTIE
GUARANTEE
5 ANS
YEARS

SAV EN FRANCE
CUSTOMER SERVICE
IN FRANCE

10 ANS
YEARS
PIÈCES DÉTACHÉES
DISPONIBLES
SPARE PARTS
AVAILABLE

 Spindrift Sprayers

www.berthoud.fr/en/

For distributor enquiries for Berthoud products, please contact our UK wholesaler Spindrift Sprayers Ltd. Tel - 01995 600001 Email - sales@spindriftsprayers.co.uk



Designs for a
Cleaner,
Safer & More
Sustainable
Environment



Minimise Waste, Maximise Appeal:

Durable & Attractive Litter Bins: Upgrade existing bins or add new ones with our stylish, low-maintenance options that encourage responsible waste disposal.

Keep Grounds Safe this Winter:

Robust and Reliable Equipment: We offer storage bins for grit salt or ice melt and manual and towable spreading equipment to reduce the risk of accidents during the colder months.

Innovative Groundskeeping Solutions:

Promote Responsible Dog Ownership: Ensure green spaces are immaculately maintained with our dog waste bin range.



Choose Glasdon and:

Elevate your brand image: Showcase your commitment to sustainability and responsible waste management.

Enhance guest experience: Create a clean, safe, and comfortable environment that resonates with eco-conscious visitors.

Simplify operations: Benefit from durable, low-maintenance products designed for efficiency.

Email: enquiries@glasdon-uk.co.uk



www.glasdon.com

BOSS ORV at the shows 2024



B OSS Off-Road Vehicles will be showing their range of utility vehicles, ATV brands and accessories at GroundsFest and Saltex. BOSS is the sole UK distributor of the Corvus Off-Road Vehicles UTV range, Powerland electric ATVs, Paxster electric UTVs, Air-ROPS quad rollover protection, and Faunamaster compact seed drills, sprayers and flail mowers.

The Corvus Terrain range comprises the EX4 100% electric 4x4 utility vehicle and DX4 rugged diesel UTV. The Terrain is designed from the ground up for groundscape, agriculture, forestry, and construction work.

The Powerland Tachyon is a complete, fully electric (Li-ion) road-legal ATV with tractor homologation and offers the benefits of conventional off-road utility vehicles while ensuring no damage to the environment.

The Paxster eCompact, eStretch and eCompact Air are all-electric, compact, and agile utility vehicles.



They are suited to an exceptionally wide range of applications. Built for sustainability, they are available as new, and 2nd Drive last nut and bolt factory refurbished models. The Paxster can draw up to 3000 watts from onboard sockets for powering tools and machinery. Showing for the first time will be the eCompact Air.

The Air-ROPS AR-QUAD is an automatic rollover protection system for ATVs that expands when the rollover is irreversible, providing the highest level of protection and the most ergonomic solution on the market.

Faunamaster products include multifunctional and timesaving



compact seed drills, sprayers, and flail mowers designed for use with an ATV, UTV, or tractor. The Faunamaster seed drills sow seeds of virtually any size to a depth of up to 80mm. They are ideal for sowing into existing grass fields, wildflower meadows, tilled soil, paddocks, or any area where normal planter equipment is too big. The sprayer and flail mower will be shown for the first time at GroundsFest. BOSS ORV is on stand number OSA720 at GroundsFest.

For more information about the BOSS Off-Road Vehicles you can call 01785 561046 E-mail: sales@bossorv.co.uk

FROM:



Paxster eCompact Air

THE SILENT ALTERNATIVE UTILITY VEHICLE



PAXSTER

An electric, stylish alternative to traditional utility vehicles.

The Paxster eCompact Air is built in Norway to be rugged but with an eco-smart design.

A silent drive yet snappy performance while smooth for everyday driving. Comfortable with easy access and masses of storage space.

On-board 3kW power socket for powering tools on site.

Road legal and built to withstand rough use in all weather conditions.

Part of the Paxster range:

- eCompact
- eStretch
- eCompact Air
- Three-year commercial warranty
- Five-year battery warranty

THE FAUNAMASTER RANGE

BUILT FOR LIFE IN THE FIELD

Faunamaster



Faunamaster Spray 70

Innovative Danish design for use on quads and ATVs. The three-metre boom is height adjustable, folds for transportation and is designed to resist damage by sliding off obstacles. Built with high-quality components and precision spray nozzles from Lechler, Germany. 70 litre spray tank capacity. The Spray 70 operates on a power supply of 12V 6.0 amp and at a pressure of 120psi/8.3 BAR.



Faunamaster FM130 ATV Flail Mower

A professional flail mower for all types of terrain. Remote control height adjustment, choice of impactors Honda V-Twin GX 690, 22hp, and the mower has a working width of 130cm.



Faunamaster Compact Disc Seeder

Designed for use with an ATV, UTV or compact tractor Sows seeds of virtually any size to a depth of up to 80mm. Ideal for parks, gardens, sowing into existing grass fields, wildflower meadows, tilled soil, and paddocks.

For more information about BOSS ORV brands call or email:

Tel: 01785 561046 E-mail: sales@bossorv.co.uk



www.bossorv.co.uk

Snickers Workwear's energising new technical midlayers

Snickers Workwear's new range of lightweight Mid-layers are a Fusion of style and performance - built for active work in the Autumn.



Crafted for full flexibility on site and optimal comfort and built for active work, they're fully flexible and can be worn as an outer layer when it's warmer or a mid-layer when it's a bit cooler.

They're full of handy technical features and innovative fabrics to tame the wind, plus brand new energising colours to brighten your spring-time workday.

Choose from new street-smart styles such as the Windblocker Half-zip Hoodie or the Lightweight Flexiwork Mid-layer Jacket - creative workwear solutions designed to make your job easier.

Whatever Snickers Workwear Mid-layer you choose, you can be sure that they all have body-mapping designs for a great fit, outstanding functionality and long-lasting comfort - all day, every day.

www.snickersworkwear.co.uk

YOUR BIODIVERSITY NET GAIN TOOL KIT



Looking for BNG inspiration? From Meadowmat wildflower turf, seeds, plants, and Enviromat sedum mat, we have a range of BNG solutions. See us at Groundsfest stand L64.

Harrowden
WWW.HARROWDENTURF.CO.UK

Propel equips leading Landscaping business to drive growth



Propel recently financed a cherry picker for a leading Landscaping business;

supporting the customer to achieve their development ambitions. Following this purchase, Propel helped the customer secure twelve more deals towards a range of business critical assets.

Feedback from the customer:

"We were initially referred to Propel as we required asset finance towards a cherry picker. We were impressed by the whole process, while the speed rate of securing the finance was very quick and efficient. The Propel team were outstanding; and the whole experience of dealing with them was excellent. We had so much confidence in Propel. It was a no brainer for us to return to them for further finance. They've since managed to help us purchase several other key assets such as woodchippers, cars, trucks and vans."

To discuss how you could benefit from an asset finance solution designed around your business, call Propel's specialist team on 01633 982922 or email contact@propelfinance.co.uk.



Cutting Edge Machinery and Vehicle Finance

for Groundskeeping & Landscaping Businesses

- Access the latest machinery and vehicles immediately
- No large upfront payment, preserving capital
- Boost your cash flow by spreading the costs over time
- Flexible finance solutions tailored to your seasonal cash flow requirements
- Fixed payments protect your business against inflation
- Fast decisions, so no delays to important new contracts

Propel is the fastest-growing asset finance company in the UK; and has a track record of over 25 years in supporting Groundskeeping businesses in achieving their growth ambitions.

Talk to Propel's asset finance experts today for fast and flexible equipment and vehicle finance solutions designed to power your growth.

Finance is subject to status. Terms and Conditions Apply. Propel acts as a lender or a credit broker for business customers only.

contact@propelfinance.co.uk
01633 982 922
www.propelfinance.co.uk

Nothing beats the ProFlex 120 for Mid Herts Golf Club!

F

ollowing more than 12 years of reliable service, a ProFlex 120 at Mid Herts Golf Club has been joined by... well,

another ProFlex 120! Delivered by Vanmac's James Boyle in April 2024, the five floating rotary decks on the Progressive unit conform to the peaks and troughs of the terrain at the Hertfordshire club making the like for like purchase a straight forward one for Course Manager Jody Wilson.

One of the oldest golf clubs in the country, Mid Herts offers a classic heathland terrain with rippled fairways and quick greens, nestled within traditional grassy hollows. While the picturesque countryside undulations pose a challenge for players, they make no match for the contour following ability of the ProFlex! "12 years ago we tried and tested a range of rough mowers and found the ProFlex 120 was the best suited to our conditions. Fast forward to this year and we went through the same process again, only to find there's still nothing in the market better than this machine!"

The Progressive ProFlex 120 delivers a uniform cut on both flat and uneven ground, the five floating decks covering an area of 3.0m in a single pass and evenly dispersing clippings for an immaculate finish. The ability to quickly and easily adjust the HOC on each individual deck makes the mower incredibly versatile, and the ideal choice for stepped or transition cutting.

"The build quality has always been exceptional, and our new ProFlex is no different" Jody explains. "We've kept hold of our older machine for the weekly cutting of the practice



ground. It still cuts exceptionally well and, with a good jet-wash, would still clean up a treat. Besides the expected wear and tear, we've rarely had any downtime or costly repair bills, and with the sealed blade spindle bearings on the new ProFlex, the routine maintenance will be even easier."

The recent delivery complements a range of other equipment from Vanmac already in the Mid Herts

shed. "For the summer, we're now set for mowing the roughs and practice ground with our pair of ProFlex's, then in the winter we're big Trilo users - with two blowers and an S4 vacuum collector helping us to keep on top of playability and presentation." He added, "The service from Vanmac is always first-class. It's great product with great back-up."

www.vanmac.co.uk



Pushing the boundaries!

Trimax was founded in the early 80s to develop more effective and reliable commercial mowers. To achieve this, they had to think creatively, understand customer challenges, and be bold enough to try new things.

“Our view is that if we don’t stay at the forefront of what we are doing and push the boundaries of what a product is capable of achieving, then we are standing still.” Bob Sievwright, Trimax founder.

Over the last 40 years, Trimax has been the first to market a multitude of groundbreaking mowing solutions, the Trimax Snake, to name but one. However, not every innovation needs to be a huge leap forward. Trimax believes in practical and purposeful innovations. Improving this, tweaking that. Their focus has always been



The NexaBlades have been fantastic. I have been using them for a year and have found the cut quality is far superior compared to the LazerBladez.

on the operator, and how each enhancement will work for them.

Let’s look at some of their recent innovations ...

Trimax NexaBlade

This unique looking blade has been meticulously engineered for high-end, fine turf applications. Compared with the standard Lazerbladez it is proven to give operators a 70% improvement in clippings and spread, 51% reduction in grass clumping, and a 14% improvement in the cleanliness of cut. And if that

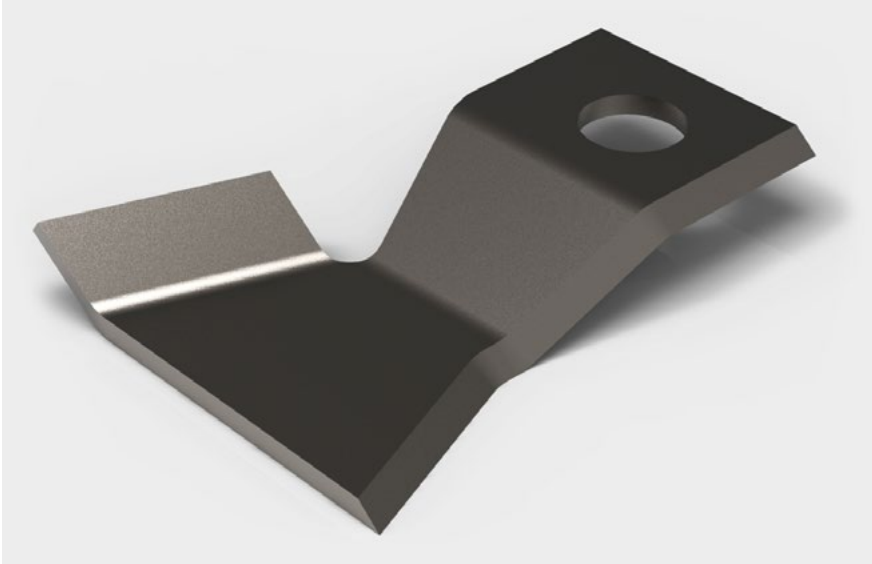
wasn’t enough it also has a 50% increased resistance to erosive wear, giving operators double the life of the blade.

Ashley Craggs, owner of Knotty Hill Golf Center, has been using the Nexablades on his Trimax X-WAM mowers to cut 45 fairways three times a week. He says:

“The NexaBlades have been fantastic. I have been using them for a year and have found the cut quality is far superior compared to the LazerBladez.

The NexaBlade’s curved shape helps glide through the grass, reducing debris build-up, which keeps the blades nice and clean. This produces finer grass clippings which evenly spread out the back of the machine, leaving behind a better playing surface.

In dewy and damp conditions, the NexaBlades don’t clump and leave



excess grass debris. This allows us to keep cutting whereas before our machines would be parked up.”

Trimax Titan Roller Bearing

The Titan Roller Bearing demonstrates Trimax’s commitment to producing mowing solutions which reduce the total cost of ownership. Yes, Trimax mowers are more expensive to purchase but they soon pay for themselves through improved productivity, less maintenance and the ultimate robustness for a longer life.

The Titan Roller Bearing is a maintenance free system which eliminates the need for regular greasing. Available on all the latest Trimax machines, the Titan Roller Bearing has been tested to withstand the most demanding commercial environments, whilst delivering maximum performance and durability.

The Trimax Single Roller (SR) Range

The Single Roller (SR) range was developed specifically for councils, racecourses and airfields, where they needed a

mower which could perform in long grass applications whilst also delivering a quality cut and spread.

Rather than reinventing the wheel, Trimax built on the success of their double roller (DR) machines and developed a single roller option that delivers all the benefits of the double roller range, whilst also performing in much longer grass.

Enter the ProCut SR, Stealth SR and Pegasus SR, where innovation meets practicality for long grass applications

Listening and Innovating Together

By continually listening to and partnering with their customers, Trimax is dedicated to releasing products that are both leading and sustainable. This commitment to improvement and innovation ensures that customers always receive the best mowing solutions tailored to their needs.

To find out more about Trimax’s product range and how it can benefit you, visit www.trimaxmowers.co.uk





Saltex 2024

Join the Industry's Largest Free Learning Event at SALTEX 2024. SALTEX 2024 is set to host the most extensive free educational event in the sector, Learning LIVE. This programme features over 20 industry pioneers, technical specialists, and experts across three stages, offering an unmissable opportunity for attendees to gain insights from top professionals.

The first day will open with a panel discussion on Sustainable Solutions featuring industry giants such as Karl Standley

from Wembley Stadium, Neil Stubley from All England Lawn Tennis Club, Jim Buttar from Twickenham Stadium, and Gary Barwell from Edgbaston Stadium. The day will continue with important discussions on how to attract young people to the industry, followed by an insightful session on effective practices for maintaining 3G artificial turf, led by Professor Paul Fleming of Loughborough University.

The second day will focus on dealing with climate change challenges at top international football venues, with contributions

from experts like Phil Sharples of Caspian Sport & Landscape, Vicente Alpuente of Villarreal, Iker Orue of Real Sociedad, and Dean Gilesby from Naturalgrass. The day will conclude with a session on advanced techniques for surface maintenance, offering valuable tips and methodologies.

The Spotlight Stage will feature 'Ask-the-Expert'-style forums, beginning with insights into controlling leatherjackets and chafer grubs by Dr. Christian Spring of STRI Group and Sean Loakes of Syngenta. Other essential discussions on this stage



will include the future of artificial grass pitches and sustainable turf management, with presentations by leaders in the field. On the second day, the Spotlight Stage will host a Soil Health Clinic led by experts such as Alex Vickers, a turf consultant, and Dr. John Dempsey, offering critical knowledge on soil health and management. Attendees will also have the chance to learn about

the latest findings in independent turfgrass research and explore how climate effects influence turfgrass management.

The brand-new Community Sports Stage will place a strong emphasis on community and grassroots sports. The first day will cover funding opportunities for multi-sport facilities, planning for pitch improvement projects,

“

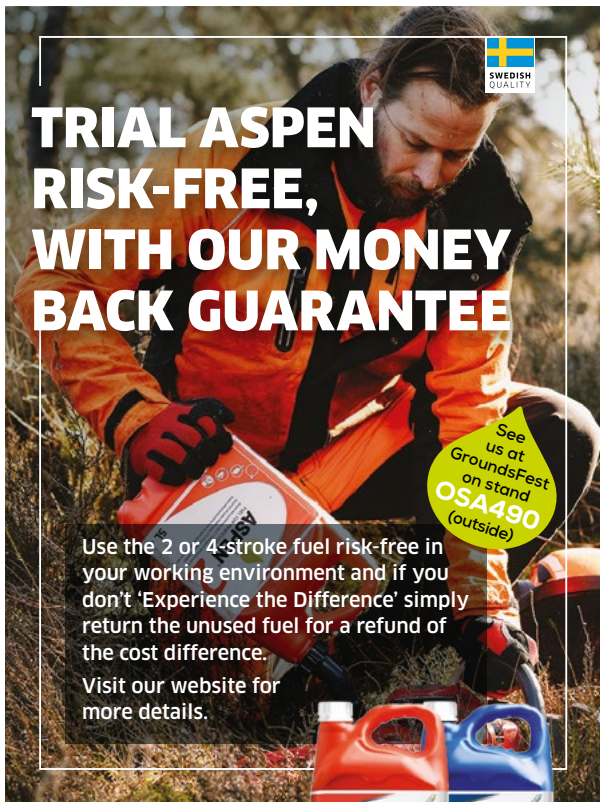
This programme features over 20 industry pioneers, technical specialists, and experts across three stages, offering an unmissable opportunity for attendees to gain insights from top professionals.

and strategies for maintaining quality surfaces on a limited budget. The second day will start with an introduction to grass seed and fertiliser, followed by sessions on effective aeration and decompaction techniques, and will wrap up with advice on attracting and managing club volunteers.

For more information and to see the full Learning LIVE schedule, visit <https://www.saltex.org.uk/learning-live>.

To register for SALTEX 2024, visit <https://www.saltex.org.uk/>.





TRIAL ASPEN RISK-FREE, WITH OUR MONEY BACK GUARANTEE

See us at
GroundsFest
on stand
OSA490
(outside)

Use the 2 or 4-stroke fuel risk-free in your working environment and if you don't 'Experience the Difference' simply return the unused fuel for a refund of the cost difference.

Visit our website for more details.



ASPEN[®]
FUEL FOR PROFESSIONALS
www.aspenfuel.co.uk



STUART CANVAS GROUP

British Manufacturer of Sports Ground
Equipment for over 50 years.



www.stuartcanvas.co.uk

☎ 01925 814525 ✉ sales@stuartcanvas.co.uk

PASSION FOR THE PROFESSION

Using our knowledge of contracting to supply professionals with the ultimate turf maintenance solutions.



SEE US AT
SALTEX
ON STAND
H053



FOR ALL TYPES OF SYNTHETIC SPORTS PITCH - WE HAVE A MACHINE TO SUIT YOUR NEEDS

www.gkbmachines.com • tom@gkbmachines.com • 07495 883617


GKB
BUILT WITH PASSION

HEAR FROM 80+ INDUSTRY THOUGHT LEADERS

^ FREE CPD-accredited sessions led by industry experts.

^ Explore cutting-edge technologies and solutions.

^ Network with professionals and share best practices.

^ Tackle industry challenges head-on with expert guidance.



LEE GUERRIERO
Stadium Operations
and Pitch Expert
UEFA



MARK FERGUSON
Agronomist
AELTC, the home of
Wimbledon



ANDREW BUTLER
Head of Grounds
& Gardens
Repton School



MEG LAY
Groundsperson
Lord's Cricket Ground



DEBORAH COX
Founder
Langan Valley Scientific



DR JONATHAN KNOWLES
Head of Sport Turf Academy
Leicester City FC

BRAND NEW FOR 2024

COMMUNITY SPORT STAGE

Community Sport Zone ups the game with a dedicated stage! Expect industry talks, success stories, panel discussions, and live demos - all focused on empowering your community sports club. Learn, share, network, and get inspired!

**REGISTER
NOW**

[SALTEX.ORG.UK](https://saltext.org.uk)

Kibworth Golf Club thrives with DSV EuroGrass Solutions

M

artin Anderson became Course Manager at Kibworth Golf Club in 2019, aiming to improve the course in

Leicestershire. With a strong connection to the club, Martin's journey from apprentice to leader shows his dedication to its success. One significant change he made was using DSV EuroGrass seed mixtures, which greatly improved various areas of the course.

Martin's connection with Kibworth runs deep, tracing back to his earliest memories. "I took my first ever steps here at a New Years Eve party," he reminisces. Little did he know then that Kibworth would become not just a backdrop to his life, but a stage for his growth and passion.

From those first toddler steps to his formative years as an apprentice, Martin's bond with Kibworth only strengthened. "My mum and dad were members, and I was a junior member before becoming an apprentice," he shares, illustrating the club's integral role in shaping his journey. It was here that he honed his skills, learned the art of greenkeeping, and even found love, meeting his wife in the clubhouse where she worked as a waitress.

In 2019, Martin landed the position of Course Manager, a role that held both challenge and promise. Armed with a vision to elevate standards and restore Kibworth's reputation, Martin embarked on a journey of



“

Remarkably, this season marked the first time in years that the tees remained disease-free—a testament to the efficacy of DSV's seed.

transformation. "Some areas of the course needed attention," he recalls, "but with a new committee and investments in equipment and products, we set out to make a difference."

Among the pivotal changes was the introduction of DSV EuroGrass seed mixtures, a decision born out of research and collaboration with trusted partners like Rhys Norville from ReGen Amenity. "Rhys put us in the direction of DSV," Martin explains, emphasising the importance of building relationships with reliable suppliers. The trial of DSV's Dual Use blend delivered promising results, paving the way for its integration into Kibworth's approach.

For the fairways and tees, Martin turned to DSV's 3-way rye mix, renowned for its quick establishment, vibrant colour, and disease resistance. The impact was profound. "The strike rate was really good," Martin reflects, "and it keeps coverage throughout the season, even going into winter." Remarkably, this season marked the first time in years that the tees remained disease-free—a testament to the efficacy of DSV's seed.

"We have not had to put a fungicide on the tees at all," adds Martin. "That is extremely

remarkable when you consider that it has been so wet and warm - perfect conditions for disease to thrive."

With its proven track record of performance, reliability, and innovation, DSV's seed mixtures instil confidence with every application, ensuring that the areas it is applied at Kibworth remain vibrant and disease-free year-round.

"I am confident every time we apply DSV seeds. I know it is going to come through and deliver good results," affirms Martin.

Backed by decades of research and expertise, DSV's seed mixtures continue to redefine standards of quality and performance, offering greenkeepers and course managers like Martin the tools they need to achieve remarkable results.

As Martin's journey at Kibworth Golf Club continues, the future looks brighter than ever. With products like DSV EuroGrass seed mixtures leading the charge, the club is poised for continued success and excellence in greenkeeping practices.

www.dsv-uk.co.uk



Coventry Hearsall Golf Club's success with Sierrablen Plus

I CL Controlled release fertiliser technology has helped to transform the fairways at Coventry Hearsall Golf Club.

Chris Low, the Course Manager at Coventry Hearsall Golf Club, has witnessed outstanding results since introducing ICL's Sierrablen Plus Spring & Summer CalMag 23-0-5 + 7CaO + 2.5MgO controlled release fertiliser (CRF) into the club's fairway programme.

Decision to choose Sierrablen Plus

After seeing numerous positive posts on social media and conducting thorough research, Chris decided to incorporate the fertiliser into his turf management programme to help boost turf density and health.

The availability of larger 500kg bags, which are both cost-effective and easy to apply with a tractor-mounted spreader, further influenced his decision.

Benefits of Controlled Release Fertilisers

Controlled release fertilisers (CRFs) are engineered to release nutrients gradually, ensuring more precise and targeted nutrient delivery to turfgrass.

This is achieved through a coating process that regulates nutrient release, guaranteeing that the turf receives essential nutrients at the right time and in the right quantities.

This method not only maximises the efficiency of nutrient uptake but also minimises waste and



environmental impact. Sierrablen Plus CalMag 23-0-5 + 7CaO + 2.5MgO can be applied from early in the growing season through to summer, providing over five months of sustained healthy plant growth.

The controlled release of nitrogen supports continuous development, while added magnesium enhances the turf's green colour and calcium increases cell strength.

Member and Visitor Praise

Since adopting Sierrablen Plus Spring & Summer CalMag 23-0-5 + 7CaO + 2.5MgO, the improvements in turf density at Coventry Hearsall Golf Club have been nothing short of remarkable.

The fairways have drawn praise from both members and visitors alike. "Members and guests have commented that the fairways are like carpets and the best they have ever been," says Chris.

The benefits of Sierrablen Plus extend beyond just aesthetics and playability. The fertiliser's controlled release technology provides sustained nutrition for

over 5 months, reducing the need for frequent applications and thereby saving time and resources.

Additionally, the environmental benefits of using a controlled release fertiliser, such as reduced leaching and runoff, align with the club's commitment to sustainable practices.

Sierrablen Plus Spring & Summer CalMag has proven to be a transformative addition to the turf management programme at Coventry Hearsall Golf Club.

"We've seen a noticeable improvement in the turf's resilience and overall health, making our maintenance efforts more effective and efficient," Chris notes.

Please contact ICL on 01473 237100 or visit www.icl-growingsolutions.uk and www.icl-growingsolutions.ie if you are in Ireland.

For more news and insightful views, you can follow ICL on Twitter @ICL_Turf

www.icl-growingsolutions.uk

Foamstream redefines weed control and business for DB Premier Solutions

F

oamstream by Weedingtech has been described as a 'gamechanger' in the world of weed control by contractors DB

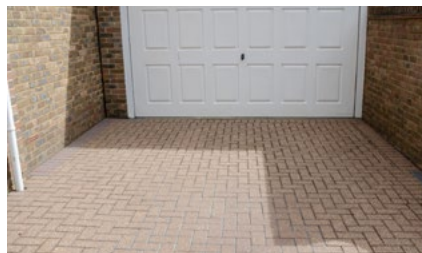
Premier Solutions. In fact, owner Darren Baldwin was so impressed with the versatility of the system, that his new venture revolves solely around his L12 unit - opening doors to customers in both the commercial and domestic markets.

With more than two decades of experience under his belt maintaining the world-leading sports surfaces at Tottenham Hotspur Football Club, Darren admits he seldom gets excited about new machinery - but that changed upon his discovery of Foamstream. "In the Premier League, sustainability is at the forefront of what we do. However, our pursuit of solutions that are more environmentally-friendly cannot be to the detriment of effectiveness or surface quality." Darren continues, "Foamstream first dropped onto my radar when I saw it in action at another Premier League Club. We then hired a unit at Tottenham and I was sold. I liked the versatility of it and could see it had real mileage - it's probably one of only a handful of innovations that have come along and really changed the market."

"In wanting to pursue something different, and take life a little gentler, I purchased an L12 from Campey Turfcare Systems in November 2023 and established DB Premier Solutions in the new year. It's proving itself day after day, gaining interest from new and retuning customers and now means I'm just as busy as ever!"



Above: Darren Baldwin of DB Premier Solutions (left) pictured with Weedingtech's Tom Hamilton. Below: A domestic driveway before and after treatment with Foamstream



As the world's leading herbicide-free weed control solution, Foamstream kills weeds, moss and algae using the precise application of hot water insulated by a specially-formulated, biodegradable and organic foam. Available in the UK via Campey Turfcare Systems, Foamstream targets unwanted vegetation as well as the surrounding spores, delivering control comparable to traditional chemical alternatives in a range of applications and environments.

"Its versatility means that one day I can be in a football club, treating weeds in areas that are environmentally sensitive that would have relied on labour-intensive hand-weeding as a previous method of control. The next, I might be in an equestrian facility working around stable blocks. Being safe to use around animals and pets makes Foamstream perfect for the domestic market, which has resulted in a wealth of new work with residential customers and council-owned facilities."

He adds, "Being able to use the L12 as a commercial cleaning unit is just another string to its bow, along with being effective on moss - within two hours you'll see a change in colour, making it easy then to brush out and remove. I'm genuinely excited for the coming months to just keep finding more and more things this system can do!"

**For more information visit:
www.weedingtech.com**

Dennis Mowers partners with Edgbaston Stadium

Dennis Mowers is proud to announce a groundbreaking partnership with Edgbaston Stadium and Warwickshire County Cricket Club. This collaboration is aimed at achieving two significant objectives: becoming the most sustainable cricket ground in the country by having a fully electric range of mowers and enhancing education and support for local grassroots cricket clubs.

A Sustainable Future for Edgbaston

Warwickshire County Cricket Club and Edgbaston Stadium, are committed to becoming fully sustainable by 2030. This ambitious goal includes transitioning to a completely electric fleet of mowers. The partnership with Dennis Mowers, part of the Howardson Group, is a crucial step toward this objective.

Gary Barwell, Head of Sports Turf at Edgbaston, explained the vision: "We have made a commitment that by 2030 we would like to have a fully electric fleet of mowers. We didn't want to do it as a half-baked project; we wanted it to be across the main ground and the training ground, making us the first club to be fully electric. It was a case of finding a manufacturer that could supply everything we needed."



DENNIS
Expert Surfaces

“Choosing to work with Dennis Mowers was an easy decision due to their high standards and their extensive experience supplying mowers to top-tier sporting teams. Bringing them in was a secure and confident move for both the club, the venue and myself. The quality and reliability of the mowers also ensure we maintain the high standards we have adhered to over the years.”

The Dennis E-Series range, including the ES-22 Ultra, ES-36, ES-760, and ES-34R, has been chosen for this transition. These battery-powered mowers offer exceptional performance, with features like adjustable speeds,



Dennis Mowers is proud to announce a groundbreaking partnership with Edgbaston Stadium and Warwickshire County Cricket Club.

interchangeable cassettes, and superior cutting quality, all while being environmentally friendly.

Gary highlighted the advantages of the mowers: “The performance levels have been so good, the grass is healthy, the cut is so strong and there has been no drop-off from switching from petrol to battery. In fact, I would argue that there has been an upturn. The balance and overall performance are being praised by all of the team members.”

Cascading Knowledge to Grassroots Clubs

In addition to sustainability, the partnership focuses on educating and supporting local grassroots cricket clubs. The aim is to help improve the skills of groundstaff, enhance pitch quality, and ultimately increase participation in the game.

Gary is enthusiastic about this educational aspect: “The partnership is incredibly exciting and is going to be very promising for the industry. I want to help people by demonstrating the work we are doing here at Edgbaston and extend this knowledge to other clubs. I am extremely passionate about turf and cricket, and the idea is to work together with Dennis to improve cricket pitches.”

Dennis plans to involve Gary in educational seminars and training sessions for cricket clubs, sharing best practices and demonstrating the capabilities of their equipment. This hands-on approach aims to create a lasting legacy by empowering local clubs with the knowledge and tools to maintain top-quality pitches.

A Partnership for the Future

Roger Moore, Head of Marketing at The Howardson Group, expressed his excitement about the partnership: “We are thrilled to partner with Warwickshire County Cricket Club and Gary Barwell. This collaboration

“

Dennis is a brand renowned around the world within elite sport venues for innovation and excellence, aligning with our values and our sustainability ambitions.

reinforces our commitment to sustainability and community support. We look forward to a fruitful partnership that will benefit cricket clubs at all levels.”

Ben Seifas, Head of Sales and Partnerships at Edgbaston, added: “We’re delighted to welcome the Howardson Group into our partnership family. Dennis is a brand renowned around the world within elite sport venues for innovation and excellence, aligning with our values and our sustainability ambitions. This is the first partnership of its kind for the Howardson Group, and we are delighted to be the venue of choice to showcase their high-quality products.”

As Warwickshire County Cricket Club moves forward with its sustainability initiatives and educational outreach, the partnership with Dennis Mowers stands as a testament to their shared vision for a greener, more knowledgeable future in cricket.

For further information or a no obligation demonstration, please contact Dennis 01332 824 777 or visit www.dennisuk.com

For more news, reviews and insightful views, you can follow Dennis on Twitter and Instagram @DennisMowers and like the company’s Facebook page - www.facebook.com/DennisMowersUK. You can also view the latest Dennis videos by visiting www.youtube.com/DennisMowers

INFINICUT® strengthen support in key counties with appointment of Wildwood Machinery

INFINICUT® are pleased to announce the appointment of Wildwood Machinery as a new authorised dealer for Hampshire, Sussex, Dorset, Berkshire, Surrey, London and the surrounding areas. Established in 2022, Wildwood Machinery have quickly established themselves as a leading provider for sales and servicing across southern England. Their extended portfolio will now include the full TMSYSTEM™ cassette range and INFINICUT® cylinder and rotary mowers, from 12th July 2024.

Under the management of James Bastian, Wildwood Machinery has grown rapidly since launching in 2022. James has over 30 years of sector experience, including many years as the managing director of East Horton Golf Club, which he has utilised to understand the exacting needs and requirements of those working in the professional turfcare industry. From their depot in Winchester, James and the team offer sales, support and servicing for customers including local authorities, golf clubs, National Trust properties, schools and community clubs as well as Premiership football clubs and other elite sporting venues.

"INFINICUT® and TMSYSTEM™ are the choice of many top-flight professional sports clubs around the world, which fits perfectly with our aspiration to provide the very best in groundcare equipment," says Wildwood Machinery managing



director James Bastian. "They will enhance our existing portfolio of machinery, giving our customers access to a high-quality range of products that can really take their surface standards to the next level."

"In Wildwood Machinery I'm confident we've found a dealer partner who will offer a service to match INFINICUT's quality of cut," adds Mark Clifford-Kennedy, INFINICUT® Territory Sales Manager for the south of England. "We look forward to strengthening our network with this new machinery servicing, repairs and sales partnership across these key counties."

www.infinicut.com

Groundsman aerators and sod cutters

Groundsman Industries Ltd

Since 1990, Groundsman Industries have been developing their unique range of grass maintenance machines and accessories for maximum performance and durability. The company specialises in Turf Aerators, Core Collectors and Turf /Sod Cutters.

Turf/Sod Cutters

Groundsman Two and Four-wheel Drive Sod Cutters deliver excellent traction in all conditions. Rear wheel blade position enable accurate fine turf cutting even on rolling terrain. Trench, Mole and De-compaction Blades cutting to 15cm deep and Sod Blades 30cm to 60cm wide 1cm to 7.5cm deep. Serrated Sod Blades for fibre reinforced grass, scrub or heather, Multi-strip Revetting Blades for sod walling or bunker building. Guillotine attachment to chop the sod into lengths.

Turf Aerators

Groundsman time proven robust elliptical plunge action aerators pedestrian and tractor mounting penetrate down to 15cm. Quick-change Solid, Needle, Chisel, and Hollow Tines are available as well as Micro Hollow and Needle Clusters for fast forward dense pattern aeration. The Flexblade Collector attachment enables Coring & Collection in one pass.

See us at Groundsfest 28A in Sept and SALTEX K103 in Oct

Visit www.groundsmanindustries.com



| | |
|---|--|
| <p>Turf / Sod Cutters</p> <ul style="list-style-type: none"> • Exceptional Traction & Cutting Ability • Low Operator Hand Arm Vibrations • 12 - 24 inch Sod Cutting Widths  | <p>Turf Aerators</p> <ul style="list-style-type: none"> • Solid or Hollow Coring Tines • Proven Reliability & Performance • Consistent Depth to 5" Depth  |
| <p>Soil / Core Collector</p> <ul style="list-style-type: none"> • Hugs Contours for Clean Collection • For Groundsman Aerators, Turf Tractors and other aerators  | <p>Tractor Aerators</p> <ul style="list-style-type: none"> • Hollow & Solid Tine to 6" Deep • Core & Collect in One Pass • Proven Rugged & Low Maintenance  |

See us at Groundsfest Stand 28A | See us at Saltex Stand K103

Versatile
Reliable
Performance...

Tel : +44(0) 28 2766 7049
enquiries@groundsmanindustries.com
www.groundsmanindustries.com



Tidy by name, tidy by nature with latest Redexim delivery at Craigiellaw Golf Club

A

Turf Tidy 3000 has become the latest addition to a rapidly expanding Redexim fleet at Craigiellaw Golf Club.

Delivered with both a flail and scarifier shaft in April 2024, the Turf Tidy is set to deliver effective fairway scarification and rough management at the East Lothian venue.

Described as 'a golfers paradise', the 18-hole Championship Links course is one of 22 which make up Scotland's Golf Coast. In charge of the maintenance alongside a team of six is Head Greenkeeper Paul Hay. "We had a machine for scarification and cutting the rough but that wasn't giving us the results we wanted so we got in touch with Henderson Grass Machinery who, along with Allen Whellans at Redexim, gave us a demonstration

of the Turf Tidy" he explains. "From the off, it was impressive - the fully floating head handled cut and collection on our undulating rough areas really well. In addition, we could see how effective the unit would be for scarification of the fairways, leaving a tidy finish and bringing the surfaces back into play swiftly."

"Since its delivery, we've scarified a couple of areas on selected fairways to remove thatch and lateral growth with fantastic, clean results. Come the winter, we're already planning to use the Turf Tidy to cut back the roughs, taking out some of the density and removing the unwanted vegetation which will bring multiple benefits to both the course and the players alike" Paul adds.

The Turf Tidy joins a Redexim Multiseeder 1200 and Verti-Drain

“

Everything we have is reliable, versatile and is backed up with brilliant support from both the dealer and Redexim directly.

7316 on Craigiellaw's fleet, both also installed by Henderson's over recent years. "The Multiseeder was a fantastic purchase! We're into our third year with this machine which is used on the greens, tees, approaches and even some parts of the fairways. It's an incredibly versatile dimple seeder, which we can quickly and easily adjust to suit ground conditions or seed type. We're currently working to incorporate more fescue into our playing surfaces so are utilising the Multiseeder with a single roller which works perfectly for us."

"The delivery of the Verti-Drain® 7316 was incredibly timely, arriving ahead of the winter meaning we could get a pass in on the tees, greens and approaches before the worst of the weather arrived."

Paul concludes, "We've got to know what to expect with the Redexim equipment. Everything we have is reliable, versatile and is backed up with brilliant support from both the dealer and Redexim directly. We will certainly be looking to add more machines in the future."

www.redexim.com



Iseki UK & Ireland to provide a comprehensive showcase at Saltext 2024

Iseki UK & Ireland will showcase its comprehensive range of compact tractors, mowers, and electric vehicles across three areas at Saltext 2024, as the company continues to provide the turf industry with tailored machinery for every application.

Iseki's Industry Leading Compact Machinery

Stand D050 will feature the Iseki range of ride-on mowers and compact tractors, including the new TM 4270 Cab and TM 4230 ROPS models. These models were first previewed at Saltext 2023 and have been highly popular across various industry sectors, having built on the TM range's lightweight and high manoeuvrability.

The 25hp TM 4270, which will be equipped with a snow plough and salt spreader on the stand to showcase its all-weather capabilities, is perfect for grounds care, sports turf, artificial turf, and winter work.

The new factory-built cabin is the most spacious in its class and comes with air conditioning, heating, a heated rear window, and front and rear LED work lights for maximised year-round operator comfort and safety.

Features on the latest additions to the range also include 21hp and 25hp Iseki diesel engines, which are stage V compliant and will run on HVO fuel too, as well as, rear PTO 540/750 rpm for HST models and 540 rpm mechanical, and the three range Hydrostatic transmission or F9/ R9 mechanical transmission.



Joining the duo of tractors is the TG 6507 IQ Cab with Iseki/MX C4 loader, while the SF 544 1300 litre out-front collecting mower with 60" deck and SXG3 range with cut and drop options and high-tip collector will also be on the stand.

Electric Options for Every Sector

Meeting Iseki's promise to provide the best option for every application, Stand D041 will feature the 100% electric Addax MT15 fully customisable commercial utility vehicle. With zero emissions, the Addax MT15 supports environmental goals set by clubs, councils and universities by reducing air pollution. It offers versatile configurations, including a flatbed, tipper, combo tipper, or cargo box, with a payload capacity of up to 1000 kg. These options make it suitable for tasks ranging from carrying tools and maintenance equipment to transporting parcels and managing waste. The combo tipper includes a lockable toolbox for added security, while the cargo box features hinged, lockable rear doors and a side-mounted roller shutter for easy access.

The vehicle is fully N1 road homologated with a top speed of up to 44 mph and a range of up to 82 miles WLTP (depending upon model), making it efficient for travel between sites located within low emissions zones.

Continuing the electric theme is the radio controlled Raymo mower with R14 SFINX post trimmer. Equipped with a 104cm rear discharge full floating deck, the fully electric mower has outstanding climbing ability and cuts on undulating and sloped terrain with ease using a zero-turn steering system and 4WD.

Its attributes make it perfect for commercial mowing in parks, industrial estates and other areas, while low running costs and easy operation make it an efficient addition to any company.

Bringing Quality to Grassroots Sport

Iseki has a long history of working with grassroots clubs in football and rugby, making Saltext's Community Sports Zone the perfect place to exhibit the TXG S24 sub-compact and TLE 3410 compact tractor.

The 23hp HST and 40hp HST machines will be fitted with implements perfect for grassroots sport and will demonstrate the various benefits of a quality compact tractor.

Iseki staff will be across all three areas to provide advice and answer any questions throughout both days of the exhibition.

www.iseki.co.uk



MAKES AERATING EFFORTLESS

“The IQ dual-clutch F24/R24 gear box was chosen as it makes manoeuvring the tractor around the course whilst operating the equipment so easy.

Another feature we really like is the Auto PTO function or the Headland Management System, it is brilliant for when we get to the end of the run with the aerator, we can lift the implement up, the PTO automatically cuts out, we can turn around then lower again and PTO restarts by itself.

Brilliant for safety and avoiding damage or excess wear and tear on the implements themselves.”

Daniel Spencer, Letchworth Golf Club



www.iseki.co.uk





Jacobsen™ fully electrified fleet to prepare Le Golf National for international games

Taking place this summer in Paris, golf fans and pros alike will get the chance to experience leading technology and innovations for a greener and optimized golfing experience

Ransomes Jacobsen Ltd., a Textron Inc. company and the renowned manufacturer of Jacobsen™ high-quality turf maintenance equipment, is proud to announce its support of Le Golf National in Paris, the flagship facility of the French Golf Federation, as they work together to prepare this summer's world's stage for the biggest names in golf. This will be the first all-electric fleet of mowers to maintain an entire course in the world.

Jacobsen equipment has more than 100 years of experience producing the highest quality cut for golf, sports turf, and commercial use. To drive a more sustainable future for turf management initiatives, Jacobsen offers the same precision cut with powerful, long lithium battery life using its ELiTE series of equipment, activated by Samsung SDI technology. These fully electric units enable one to keep up with the needs of the course, and maintain a cleaner, fresher

environment without hydraulics, to minimize the risk of spills or tailpipe emissions. This results in a quieter course for golfers, without the addition of harmful chemicals to the land, air and water surrounding them.

"We could not be more excited to bring this groundbreaking technology to the world," said Simon Rainger, Vice President, Turf for Textron Specialized Vehicles. "This relationship aligns perfectly with our mission to provide

superintendents and golfers with exceptional experiences, and we look forward to showcasing our commitment to creating low maintenance and greener solutions for participants and fans on the world stage.”

Jacobsen, with the addition of Pace Technology, is the answer that the world has been waiting for when it comes to golf course maintenance. The Pace Technology systems in place allow Le Golf National to know when, where and exactly what needs to be tended to on the courses at a given moment through a centralized process. Pace

“
We could not be more excited to bring this groundbreaking technology to the world

Technology can be accessed from any device and features real-time tracking and task management to maximize the effectiveness of your operation. Users can track and measure the power output per hole of the machines to maximize their performance and develop

a bespoke picture of how they work on the course. While this is the first facility to go all electric, Ransomes Jacobsen is committed to fully electrifying golf and sports turf facilities across the globe in the years to come.

Follow along as we prepare for the summer games on Instagram, X and Facebook to stay up-to-date on the latest news, highlights and updates during the most anticipated sporting events of the year.

For more information, visit www.jacobsen.com



Outdoor applications made easy



Makita's UX01G 40VMax XGT Brushless Split Shaft Motor Unit signals the start of a detailed system that is ideal for a wide range of applications. Professionals can choose from a range of versatile attachments to pair with the unit, from pole saws and brush cutters, to hedge trimmers and sweepers - and the tool-less installation makes changing between tasks quick and effortless, reducing down time.

Designed for working over longer periods, the cordless, multi-function UX01G is powered by Makita's 40VMax XGT battery technology and a brushless motor to deliver an impressive no-load speed of up to 9,700rpm with up to 1000W output.

With a loop handle design that allows for precise control, the UX01G includes overload protection as well as variable speed control, along with a reverse switch to assist in removing grass clippings. To protect users and the tool, the UX01G also features Active Feedback Sensing Technology (AFT), which automatically stops the machine if the rotation of the attachment suddenly slows or stops.

Furthermore, the UX01G is IPX4 rated for excellent water resistance, ensuring users can continue working regardless of the weather. The unit also includes a shoulder harness for operator convenience and the handle and hanger position can be adjusted for comfortable operation.

A combination system for working across a wide range of tasks, the unit can be paired with a variety of optional shaft attachments (all sold separately) for trimming, edging, cultivating,



clearing and cutting. Attachments include the 199339-7 Roller Sweeper, the B-04818 Cultivator, and the 196752-0 Edger.

Also compatible with the UX01G, is the 1913C9-3 Ground Trimmer attachment which, thanks to its wheels and T-shaped blade, can be used to trim grass along obstacles whilst reducing the risk of flying stone and debris.

Meanwhile, the DEAPP400MP Water Pump attachment is a useful companion for pumping water,

draining or sprinkling. It is capable of working in at least 20mm of shallow water and features a 25mm hose attachment.

With the flexibility to add different attachments, the outstanding UX01G Split Shaft not only offers versatility, it also allows professionals to save time and money in the long run, especially compared to owning and operating several different garden power tools. And with its space saving and compact design, it is easy to transport and store.

For more information visit www.makita.com



Makita[®]



**ONE BATTERY
130+ PRODUCTS**



XGT

**Discover the expansive
XGT 40V & 80V Max line-up.**

With over 130 products and still expanding, the XGT range is your ultimate alternative to traditional petrol and mains power sources.

Experience on-demand power across our complete product spectrum. Makita provides more than just power tools, explore our full range at makitauk.com and follow socials for updates.

XGT

**40V^{Li-ion}
max**

**BL
MOTOR**

makitauk.com

OAS Compost Teas & ThatchEater transforms the greens at Wells Golf Club

At Wells Golf Club, located in picturesque Somerset, golf isn't just a sport—it's a tradition. Founded in 1893, this charming 18-hole parkland course is renowned for its challenging layout and warm hospitality. However, in late 2022, the greens at Wells Golf Club were facing significant challenges. Thatch accumulation and black layer issues had left the greens in poor condition with inadequate rooting. The situation called for a transformative solution.

Turning the Greens Around

Head Greenkeeper Mark Lewer turned to Origin Amenity Solutions (OAS) renowned for their commitment to sustainable and innovative turf management solutions. Wells Golf Club embarked on a journey to rejuvenate the greens.

In spring 2023, a comprehensive treatment programme was implemented. This included the application of Symbio ThatchEater and monthly Symbio Compost Tea applications, supplemented by Bio Stimulants. "One of the pivotal changes we made was to significantly reduce nitrogen applications, which had been overused in the past. Additionally, we ceased the use of iron, a substance that my predecessor had heavily relied upon", says Head Greenkeeper Mark Lewer.

Compost Teas

Symbio Compost Tea enhances the biodiversity of life contained in healthy soil. It is created by brewing specially prepared compost in an aerated solution of water with added nutrients and biostimulants. This biologically rich tea is used as a rootzone drench to give turf all the advantages that beneficial bacteria,



fungi, protozoa, and predatory nematodes offer to improve soil and plant health. It is used as a natural soil conditioner which results in healthier turf, with better disease resistance.

ThatchEater

Symbio ThatchEater is used by many top clubs to combat thatch build-up and enhance turf health. It contains a blend of beneficial fungi and bacteria that rapidly degrade thatch into humus, improving soil quality. By promoting root growth, it boosts nutrient and water uptake, resulting in stronger, deeper roots and better sward density. This microbial activity not only supports fine grasses but also releases locked-up nutrients, leading to high-quality, durable playing surfaces.

The Results Speak for Themselves

OAS Technical Sales Manager Neil Carter adds, "The transformation was remarkable. Within a short period, the greens began to show signs of improvement in all aspects. The thatch and black layer issues were mitigated, and the rooting

system of the greens strengthened considerably. This holistic approach not only revitalised the greens but also enhanced their resilience and health."

Positive feedback from the club members helped lead to an increase in membership. Furthermore, the club was proud to be listed as 'One of the Most Improved Golf Courses in the UK' by Golfshake, the leading golf course review site. Golfshake's ratings are based on various categories reflecting players' expectations and the quality of their experiences, and Wells Golf Club's consistent improvement earned them this prestigious recognition.

Mark expresses his satisfaction with the results and his vision for the future: "While I'm very happy, we won't stand still. We look to continue to improve conditions at Wells Golf Club going forward." This proactive and forward-thinking approach ensures that the Club will keep evolving and enhancing its facilities for members and visitors alike.

The results are a testament to the power of innovative turf management solutions. The successful application of Symbio Compost Teas and ThatchEater, combined with a strategic reduction in nitrogen and elimination of iron use, has restored and elevated the quality of the greens. Wells Golf Club stands as a beacon of excellence, blending tradition with modern agronomic practices to offer an unparalleled golfing experience.

For more information on how OAS can help transform your greens, please email sales@originamenity.com or call 0800 138 7222

20-20-30 Tank Mix

A highly effective, non-pesticidal
Microdochium nivale management strategy

Pesticide legislation and a changing climate has radically altered how we can manage *Microdochium nivale*. OAS' 20-20-30 Tank Mix combines **Turfite® Elite**, **Liquid Turf Hardener** and **Seamac® ProTurf Fe**, together with **Mantle®**, to provide an extremely effective solution when building your IPM strategy against *Microdochium nivale*. It works by:

- Changing the leaf surface environment to make it harder for the pathogen to grow on and into the leaf surface.
- Stimulating the plant's natural defence mechanism.
- Improving plant health/growth by stimulating root and shoot development and chlorophyll production.



Orders and enquiries:
0800 138 7222
sales@originamenity.com
www.originamenity.com

The Sustainable Solution: Kress RTKn Robotic Mowers

Emission-free turf care for greenkeepers

As sustainability becomes increasingly vital for golf courses and large turf areas, greenkeepers are seeking efficient, cost-effective ways to reduce their carbon footprints. Kress RTKn robotic mowers combine cutting-edge technology with zero-emissions to offer a comprehensive solution.

Precision and Performance Redefined

Kress RTKn mowers are setting a new benchmark in turf care by delivering unparalleled precision and performance. These innovative machines operate quietly and without emissions, offering a greener alternative to traditional petrol-powered mowers. The impact of switching to Kress RTKn robotic mowers is substantial - an 18-hole golf course could reduce its carbon footprint by up to 10 tons annually, making a significant contribution to environmental sustainability.

Addressing Common Turf Care Challenges

Maintaining a pristine golf course or turf surface comes with its own set of challenges, especially under time constraints and changing weather

Kress RTKn robotic mowers go beyond just cutting grass; they actively contribute to the health of the turf. By mowing early, even when dew is present, they reduce issues like soil compaction and minimise the effects of worm casts and mole activity.



conditions. Kress RTKn mowers are designed to tackle these issues head-on. Their ability to operate efficiently in wet weather ensures consistent cutting even when grass growth is at its peak.

Silent and Safe Operation

One of the standout features of Kress RTKn mowers is their near-silent operation. This allows greenkeepers to schedule mowing at any time of day or night without disturbing nearby residents, hotel guests, or players. Additionally, the robotic mowers reduce safety risks, such as the potential for staff injuries from flying golf balls.

Enhanced Turf Health and Longevity

Kress RTKn robotic mowers go beyond just cutting grass; they actively contribute to the health of the turf. By mowing early, even when dew is present, they reduce

issues like soil compaction and minimise the effects of worm casts and mole activity. The consistent and gentle cutting action also promotes healthier grass growth, leading to more vibrant and resilient turf.

A Smart Investment for the Future

The long-term benefits of investing in Kress RTKn robotic mowers extend beyond just operational savings. Their advanced technology, reliability, and efficiency set a new standard in commercial turf care. For greenkeepers focused on both environmental impact and health benefits, these mowers represent a forward-thinking investment that helps with the evolving demands of sustainable landscaping.

For more information, visit the Kress website: kress.com/en-gb/rtkn-without-boundary-wire

RTKⁿ

Real-time kinematic to the
power of network



Kress[®]

UNMANNED MOWING FOR SUSTAINABLE GROUNDSKEEPING.

The Kress RTKⁿ robot mowers revolutionise grounds maintenance by covering larger areas with precision. Operating autonomously in parallel lines, they efficiently move from area to another. Their sleek design and no need for on-site aerials ensures the aesthetics of the grounds are preserved, and with zero emissions, Kress mowers are the best choice for sustainable groundskeeping.

Speak to your local grounds maintenance machinery dealer today to learn more.

kress.com

Just the right equipment for the job

Here at AJ Mowers we pride ourselves on helping our customers find just the right equipment for the job. We spend the time to understand your needs, visit you on site, arrange demos whenever we can and provide a range of options that meet your requirements and budget.

Over the past year we have supplied a range of Kioti products to a wide variety of customers (private individuals, large schools and a major football club) - Kioti's products are proving to be extremely popular across all sectors: agriculture, sports turf and estate management. Their premium tractors range from 21hp sub-compact models through to 120hp large chassis tractors. All can come on turf, industrial or agricultural tyres and have a formidable lift capacity.

Customers have also been impressed by the fact that Kioti produce almost all the components for their tractors themselves, allowing Kioti to offer an outstanding warranty on their machines as standard: tractors come with a 5 year warranty (or 3000 hours), and utility vehicles come with a 2 year unlimited hour warranty.

If you'd like to discuss the Kioti range, please call our Sales Director on 07392 948439 (or 0117 960 0173) or email sales@ajmowers.co.uk



Groundcare Machinery Specialist
• Sales • Service • Parts

We are groundcare machinery specialists serving Bristol and surrounding areas (including Dorset, Wiltshire, South Gloucestershire and North Somerset). With unrivalled skills, knowledge and experience in the commercial groundcare sector, if you've got it, we can work on it: commercial and golf mowing equipment, tractors, chippers, utility vehicles, spiking and slitting equipment and flail mowing equipment.

We work with a wide range of golf clubs, major sports grounds, large schools, colleges, universities and local councils – supporting them in all areas: sales, servicing, maintenance, repairs, parts and hire.

As an authorised dealer for Toro, Hayter, Kioti and TP Chippers we can provide advice and guidance for customers looking to invest in new equipment, as well as arranging on-site demonstrations. Given the breadth of our customer base, we also have a great pipeline of quality, used machines available.



For general enquiries please call us on 0117 960 0173 or email info@ajmowers.co.uk. For sales enquiries (new and used) please call our Sales Director on 07392 948439 or email sales@ajmowers.co.uk

0117 960 0173 | info@ajmowers.co.uk
www.ajmowers.co.uk





Site safety studs and bars



All your sports equipment and line marking needs, along with general greenkeeping tools, groundsman's equipment and road studs in one shop. Sports installation, sports maintenance works along with sports and car park markings available in some areas.

Technology to transform from GroundTech

Mowing grass manually can be a time-consuming and exhausting job in the world of grounds maintenance. With a robotic mower, this work is completed for you with an autonomous, GPS controlled system. The device is app-controlled, allowing you to check on cutting progress and set a schedule for mowing. The mowers are durable and work across a variety of terrains.

Robotic mowers can be used across sports pitches, golf courses, airfields and schools. They are especially popular with site managers and head greenkeepers to make maintenance more efficient. A large benefit being that they can mow on softer ground than heavy machinery, minimising weather interruptions. The mowers are designed with capacities of up to 75,000m² of grass being cut up to 4x per week.

The robotic mowers can cut and maintain grass to different heights without manual adjustment, making for efficient switchover between different types of pitches. With powerful blades, robotic mowers



deliver optimum precision. The mower is also designed with healthy grass in mind, recycling cuttings back into the soil.

They are quiet with less noise pollution, meaning no disruptions to work or studying. Robotic mowers are also eco-friendly, emitting 90% less carbon than diesel and petrol mowers.

Portal

- Live updates
- Detailed activity history
- Notifications and alarms
- Status of robot
- Monitoring battery levels
- Set and change cutting schedule and height

Case Study - Cranham Golf Course

Location: Upminster, Essex
Customer requirements: A solution capable of managing the maintenance of all 18 fairways while upholding the quality and standard of finish.

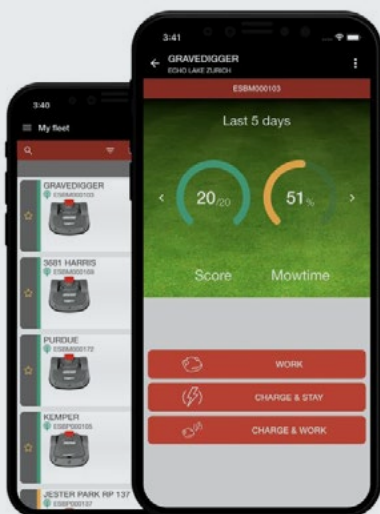
Solution: 3x robotic mowers, one covering 8 fairways, another

covering 5 fairways and rough, the final one covering 4 fairways and rough.

Method: Working with the client, we were able to produce schematics using Google Earth with area sizes that needed covering, with that we were able to recommend the most efficient model of mowers to breakdown the tasks.

Facts

- Leasing options available
- Save 50% of time and money with a robotic mower
- Obstacle detection
- Optimise labour
- Grass quality improvement
- Low noise pollution
- Natural fertilisation
- Reduction in CO² emissions
- Remote controlled by app and anti-theft solution and geofencing alert build in



01366 500828
info@groundtech.co.uk
www.groundtech.co.uk

Revolutionise your business with our robotic solutions



Time Saving



Professional Support



All Weather



Maintenance Service



Quality Cut



Trial Available



Quiet



App Managed



Sustainable

Uniting the industry, powering progress

T

he Grounds Management Association's (GMA) Sports Amenities Landscaping Trade Exhibition (SALTEX)

returns for its 78th edition, themed "Uniting the Industry, Powering Progress." Taking place from October 30th to 31st at the NEC Birmingham, this premier event in grounds management will gather industry professionals, volunteers, and exhibitors from around the world to showcase the latest innovations, trends, and practices in grounds management, landscaping, and environmental sustainability.

SALTEX 2024 is set to reinforce its status as the premier exhibition in the industry by hosting the biggest brands across three halls and attracting thousands of visitors. The event will feature a comprehensive programme, including the renowned Learning LIVE schedule, where industry experts and top grounds care professionals from leading sports venues will discuss hot topics. Attendees will also have the opportunity to speak with grassroots pitch advisors from the GMA and representatives from National Governing Bodies for technical advice, funding guidance, and professional development opportunities.

As a not-for-profit organisation, the GMA has consistently reinvested the revenue generated from SALTEX back into the grounds management industry since 1938. The success of



SALTEX 2023 enabled the GMA to subsidise approximately 67% of its membership base, with community and student memberships benefiting the most. This support underscores the GMA's commitment to nurturing talent and maintaining high standards across the industry.

Additionally, revenue from SALTEX 2023 helped subsidise 1,900 GMA training courses for grounds professionals, both in person and online. The GMA's training courses

and qualifications play a crucial role in advancing the knowledge and skills of grounds professionals. The GMA is also the only industry association accredited by the Department of Education's matrix Standard, providing independent information, advice, and guidance to those wishing to enhance their knowledge.

Sarah Cunningham, Director of Commercial and Events at the GMA, highlighted the significance of SALTEX in supporting the GMA's year-round work: "By attending SALTEX, visitors and exhibitors are supporting the vital work that enables the GMA to invest in its members, education, and training, allowing us to continue lobbying, influencing, and creating stakeholder relationships that bring investment back into the sector."

SALTEX 2024 will welcome back major industry brands like Kubota, Toro, and Iseki, reaffirming their support for the GMA's vision of excellence in grounds management. Visitors can expect to see these brands, along with others such as Reesink UK/Toro UK, Dennis Mowers, and Husqvarna UK, showcasing cutting-edge products and services. New exhibitors like Stogger Turf Care and Hayley Group will also debut at the event, broadening the horizons of the grounds management industry with innovative products and sustainable practices.

Stogger Turf Care, a tech innovator based in the Netherlands, expressed excitement about participating in SALTEX 2024 by saying: "Stogger Turf Care is very excited to participate at SALTEX 2024. We can't wait to present our new product line and state-of-the-art technologies to this large audience. Let's ignite your growth potential with Stogger Turf Care." Similarly, Hayley Group, a

“

We can't wait to present our new product line and state-of-the-art technologies to this large audience. Let's ignite your growth potential with Stogger Turf Care.

leading UK supplier of engineering components and consumables, looks forward to building on its support for grounds management professionals through this exhibition: "We are delighted to be exhibiting at SALTEX for the first-time in 2024. We've got a strong presence in supporting grounds management professionals with their bearings and maintenance consumables, this exhibition will help us build on that."

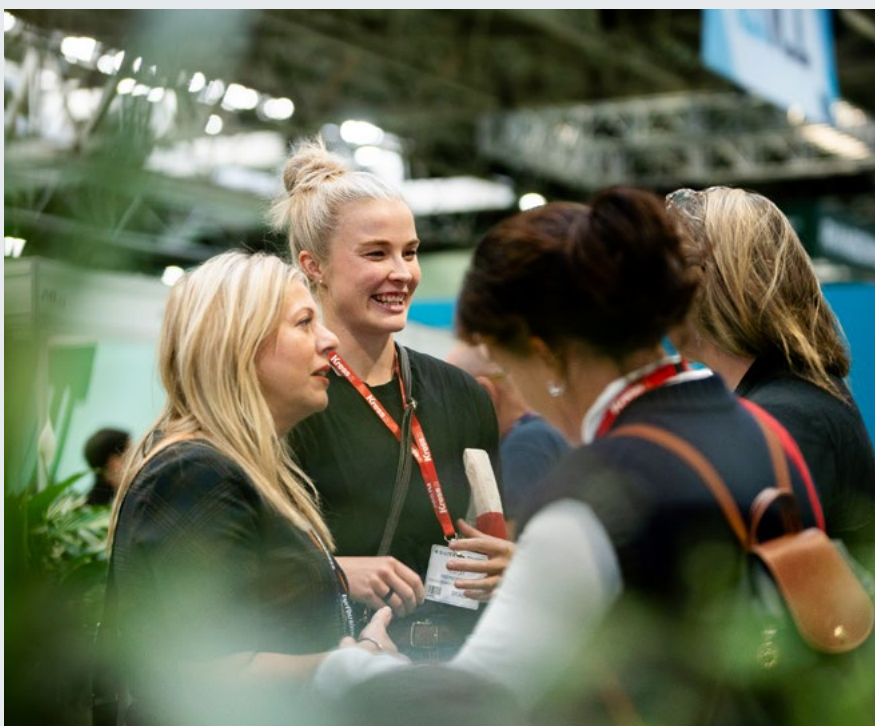
The Learning LIVE schedule at SALTEX 2024 is packed with over 20 industry pioneers, technical specialists, and experts across

three stages, making it the largest free live educational event in the sector. Attendees will have the chance to hear from leaders from UEFA, Wembley Stadium, Wimbledon, and other top venues, with sessions covering topics like sustainable solutions, attracting young talent to the industry, and managing artificial turf. The Community Sports Stage, a new addition this year, will focus on community and grassroots sports, offering insights into facility funding, pitch improvement projects, and volunteer management.

The GMA has also announced the expansion of the Community Sports Zone, a space dedicated to the community and voluntary grounds teams. Following its successful debut in 2023, the expanded zone will offer more space, more machinery, and its own Learning LIVE stage. Leading exhibitors like ISEKI, Dennis and SISIS, and Campey Turf Care Systems will showcase products tailored to the needs of community and grassroots sports clubs. The zone aims to provide practical solutions for clubs with limited resources, ensuring they have access to the best equipment and advice for maintaining their facilities.

Jason Booth, Chief Operating Officer at the GMA, emphasised the importance of the Community Sports Zone, noting that it is designed to support grassroots volunteers who play a crucial role in maintaining community sports facilities. The expansion reflects the GMA's commitment to helping these volunteers succeed and ensuring that community sports continue to thrive.

For more information on SALTEX 2024 and to register for the event, please visit www.saltex.org.uk



Labour saving bunkers at busy Duran

Florida course reports major labour savings and quality improvements from ZLine bunker liner

W

hen a course is busy, maintenance downtime is especially tough. The semi-private Duran Golf Club, located in Melbourne, on Florida's east coast, south-east of Orlando, is a classic example.

Duran was built in 2004 by architect Chip Powell and is owned by the large, family-controlled A Duda & Sons, an agricultural business. It is part of the Viera community developed by Duda in Brevard County. And it, like a lot of Florida courses, is an extremely busy place. "Our championship course does about 55,000 rounds a year, while our par three course, which is lit and open till 9pm each night, does 23,000," says general manager Jeff von Eschen.

Von Eschen was part of the construction and grow-in team at Duran, and managed the golf course as superintendent until 2020, when he became general manager. "We have 88 bunkers on our championship course, and another fifteen on the par three," he says. "When they were constructed, they were rather deep with high-flashed faces, and obviously this caused problems whenever there was heavy rain, which happens a lot in Florida. A geotextile liner was installed



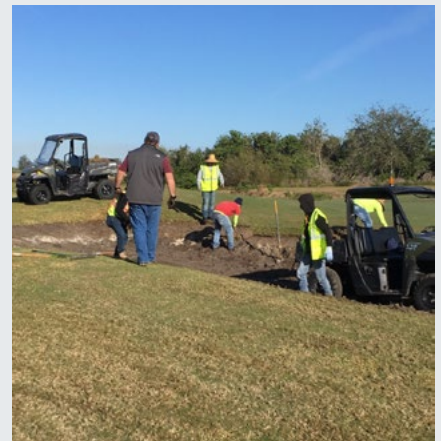
when the course was built. It worked quite well, but it didn't last that long. In 2016, we had a tropical storm that came through and completely destroyed all the bunkers on the par three course. We were looking at liners to help reconstruct them. We trialled several, including ZLine. Everybody - especially players - really liked the ZLine product best of all. When the sand got down below its recommended depth after a big storm it remained playable. So contractor Fusion Golf came in and reconstructed the bunkers on the par three course. We used them for a year to get a good review on the product, and then in 2019 I recommended we did the championship course as well."

"Ever since we redid the bunkers, our maintenance load has gone way down," says von Eschen. "The

"

Ever since we redid the bunkers, our maintenance load has gone way down.

bunkers were basically replicated except that we rolled the lips over a little bit. No architect was needed. There were drainage issues that Fusion fixed when they did the rebuild, and the height of the flash has been reduced, but before, it would take me two days to get the bunkers back in play after a big storm. Now it's three or four hours of pushing sand. We save one guy's labour every day in bunker maintenance. We have also had to add less sand to the bunkers because we don't have these huge washouts and contamination."



Photos: Jeff von Eschen



JCB Golf and Country Club adopts a Sustainable approach with the help of OAS

The prestigious JCB Golf and Country Club in Rocester, Staffordshire is preparing to host the LIV Golf UK event next week, from 26-28 July 2024, replacing Centurion Golf Club in Hertfordshire as LIV's UK LIV stop.

JCB has hosted events in the last two years on the Legends Tour, the DP World Tour's veteran circuit. They now join an ever-growing list of UK golf courses in connection with LIV Golf and its financial investment in the professional game.

The new Golf and Country Club opened less than five years ago in September 2019 and its testimony to Golf Course Manager Callum Wark and his 33-strong team that this is already a tournament standard course, having hosted events on the Legends Tour and

the DP World Tours veteran circuit.

Previously from Loch Lomond Golf Club, Callum joined the original JCB Course Manager Evan Grant as a Senior Greenkeeper in June 2016, along with another 15 people who were all instrumental in the construction and grow-in of the course.

Kerr Hunter from Origin Amenity Solutions (OAS), which encompasses Symbio, Headland Amenity, Rigby Taylor, and Turfkeeper, has dealt with Callum since his inception at the club. Callum explains, "JCB wanted an organic and sustainable course. Evan had been working with Kerr from his former club and wanted the same results. With the active ingredients in fungicides being slowly removed from the market we wanted to proactively manage our greens moving forward and

wanted to adopt a biological programme that required less input from us."

In 2018 Evan became the General Manager and Callum was promoted to Golf Course Manager. He oversaw the official launch of the JCB Golf and Country Club, which was designed to reflect the bold, ambitious vision of Lord Bamford, Chairman of the iconic construction and agricultural equipment manufacturer JCB who wanted nothing less than the creation of a tour-ready contemporary masterpiece in course design.

Internationally renowned Robin Hiseman of European Gold Design was commissioned to create the stunning, contemporary layout in beautiful rural Staffordshire. The 7308-yard par 72 course has been designed to challenge elite golfers

at full distance while allowing corporate golfers an enjoyable experience.

Callum continues, "I'm not against chemical inputs and where I need to, I do use them, but I find that by following a biological programme we only have a limited need for them. There is a high level of expectation that the course is in immaculate condition. We cannot afford for our members to see any disease or scarring so as a preventative we currently spray fungicide preventatively on the greens three times a year, but we are planning on reducing this to two times if possible. I see it as a safety net."

The course is built on land close to the JCB headquarters in a mixture of established woodland and farmers' fields. The site wasn't the easiest to work on as there was a lot of clay and drainage was a challenge. Hiseman and his team moved over 400,000m³ of earth to produce the course.

OAS helped with the specification of a full assembly grow-in programme to enable the course to be built with a biological base. Some of the products used included Mycorrhizal Inoculant for greens and tees and Mycorrhizal



SeedCoat for fairways and outfields along with Caviar, calcium and magnesium.

Callum adds, "Today the soil is biologically active and the course is maintained with a vigorous organic and biological programme. We have four Compost Tea brewers and use Compost Teas every two weeks to feed the soil life and enhance the soil food web. We have a full greens programme to aid in the prevention of disease and improve plant health. We have fantastic results and the OAS biological products maintain the quality. If it isn't broken, don't fix it!"



'Symbio ThatchEater is a core product for us. Our members demand high-performance surfaces. They must be firm and fast at all times. We still need to aerate regularly but ThatchEater is my go-to product.'

Origin Amenity Solutions is the major supplier to the JCB Golf and Country Club for their putting greens. As well as a myriad of biological products such as ThatchEater, seaweed, CMS Shoot, DegrAid, Biotabs and Liquid Aeration, Callum has been using OAS Iron products for the fairways, 'it is a high-quality product and one that works with our programme.'

'Symbio ThatchEater is a core product for us. Our members demand high-performance surfaces. They must be firm and fast at all times. We still need to aerate regularly but ThatchEater is my go-to product.'

"The service and advice I receive from Kerr at OAS is invaluable. We have a planned programme, but we tweak it accordingly. A few years ago, I had a problem with plant parasitic Nematodes. Kerr recommended Root Repair. The problem was eradicated, and I've never had an issue since. The biological approach works for us, our greens are tournament-ready, and the club is looking forward to an exciting year ahead."

For further information or to discuss a bespoke programme for your club contact the OAS team on 0800 138 7222 or email sales@originamenity.com

www.originamenity.com

The Landscape Zone at GroundsFest 2024

Where innovation meets inspiration

T

he Landscape Zone is a dedicated landscaping area within the groundbreaking GroundsFest

event, taking place at Stoneleigh Park in Warwickshire on 10 and 11 September. This entire hall is dedicated to all those involved in the planning, design, and construction of outdoor environments in the landscaping sector. The Landscape Zone will spotlight the latest outdoor environment technologies, solutions, and innovations, making it a must-attend event for landscape architects, local authority landscaping professionals, garden designers, landscape contractors, interior designers, facilities managers, and many more.

Building on the success of last year's insightful seminar programme, this year's lineup promises to be even more impressive. Notable speakers include:

- Ben Parkinson - The Garden Project Co
- Hannah Phillips - HP Garden Design
- Ian Jelley - Warwickshire Wildlife Trust
- Karl Harrison - Landscaper and Decking Expert

Key seminars to look forward to:
Birmingham: The City of 1000 Green Spaces



Speaker: Ryan Suddall (Fira Landscape Ltd)

By 2047 Birmingham, once known as a city of 1000 trades, will be known as a city of 1000 green spaces. Ryan discusses the work they are doing in the city to contribute towards the target as well as the progress that has been made so far.

Building a Successful Landscaping Business

Speakers: Herman Pobrati (Acacia Gardens), Ben Parkinson (The Garden Project Co), Rob Woodhouse (Solent Garden Services Ltd)

Building a successful landscaping business requires a combination of passion, strategic planning, and a commitment to excellence. Our panel discusses how you can position your landscaping business for growth and sustainability using tried and tested methods.

Prioritising Pollinators

Speakers: Habitat Aid, Paul Hadley (Paul Hadley Design), Gini

Denison-Pender (Beautiful Wild Garden and Landscape Design)

With wild bees and other pollinators in decline, pollinator-friendly planting has never been more important. Our panel discusses the different planting options available to create an all-year-round buzz in the garden.

Escape to the Mediterranean

Speaker: Jason Hales (Villaggio Verde)

More and more people want their gardens to emulate the Mediterranean. Our panel of experts discuss how to achieve this through material selection, planting, and the use of neutral tones.

How to Incorporate Sustainable Water Management into Everyday Gardens

Speakers: Rob Jones (The Garden Design Company), Hannah Phillips (HP Garden Design)

Join us for an enlightening seminar on "How to Incorporate Sustainable Water Management into Everyday Gardens," where we delve into practical and innovative strategies for creating eco-friendly and water-efficient gardens.

Digital Marketing

Speakers: Ben Shaw (Adtrak), John Cutts (Adtrak)

Learn the latest digital marketing strategies and tools to enhance your landscaping business' online presence and attract more customers.

Rising Through the Ranks

Speakers: James Smith (James Smith Landscape & Garden Design), Kenny Raybould (Raybould & Wild/ Covent Garden)

It can be hard to make a name for yourself in any industry, but our group of panellists are doing a pretty good job so far. Discover the secrets behind their creative processes, from conceptualisation to implementation, and gain valuable insights into the principles and practices that have shaped their careers so far.

Green Solutions: The Landscape Industry's Role in Combating Climate Change

Speaker: Kate Slegg-Newton (WSP in the UK)

Climate change presents one of the most pressing challenges of our time, and the landscape industry holds a unique and powerful position in the fight against its effects. "Green Solutions: The



Building on the success of last year's insightful seminar programme, this year's lineup promises to be even more impressive.

Landscape Industry's Role in Combating Climate Change" is an enlightening seminar designed to explore how landscaping professionals can leverage their skills, knowledge, and resources to contribute to a more sustainable and resilient environment.

Decking: What's Hot and What's Not?

Speaker: Karl Harrison (Karl Harrison Landscapes)

Join Karl Harrison for 'Decking - What's hot and what's not' where he will delve into the latest trends, materials, and design innovations in the world of decking. Plus, what you need to know regarding regulations.

Joining the Dots: How Small Actions Can Make a Big Difference for Nature and for People

Speaker: Ian Jelley (Warwickshire Wildlife Trust)

We're facing an ecological emergency with 1 in 6 species in the UK under threat from extinction. Why should we care? Join Ian Jelley, Director of Landscape Recovery at Warwickshire Wildlife Trust, to hear what nature does for us and see how a surprising number of businesses are taking action for wildlife. From golf courses to car manufacturers, house builders to cricket clubs - organisations are stepping forward to bring our wildlife back. Will you join them?

This is just a snapshot of the exciting seminar offerings in The Landscape Zone this September.

Exhibitors to Watch:

New exhibitors such as Azpects, Alba Trees, Crowders, Bury Hill Landscape Supplies, and Habitat Aid will be showcasing their latest products. Returning exhibitors include Boot & Dart, Charles Taylor Trading, Resin Bonded, Groundscare Products, Harrowden, Everedge, M&M Timber, Tracmaster, and many more.

Additionally, both the British Association of Landscape Industries (BALI) and the Association of Professional Landscapers (APL) will have stands and have partnered with the event. Notably, BALI will be holding their AGM at GroundsFest.

Don't miss your chance to be part of the industry's must-attend event. Register now for free at www.groundsFest.com and prepare for an unforgettable experience at GroundsFest 2024.

You can also follow GroundsFest on Twitter, Facebook and Instagram @GroundsFest for much more news, reviews and insightful views.



Win a Union Jack Turf Tank robot at GroundsFest for a year!

Turf Tank is returning to GroundsFest with the industry's leading autonomous line-marking robot on stand OSA481.

Attendees will be able to experience Turf Tank Two live, with the robot regularly marking out pitches over the two days at Stoneleigh Park, Warwickshire. The Turf Tank UK and Ireland team will be on hand to discuss the technology, its benefits, and how it can make a grounds operation more efficient.

In addition to live demonstrations and the opportunity to speak to the Turf Tank team, attendees who visit the Turf Tank stand will also have the chance to win a Union Jack Turf Tank robot for a year! Details on how to enter will be available on stand OSA481.

A Turf Tank robot can address labour shortages, save time, or bring consistency, but for Galaxy Sports Little Kerse, a 35-acre site in Falkirk, Scotland, with 11 pitches ranging from 11-a-side grass to full-size 3G and astroturf 6-a-side pods, matching precision line marking with sustainability was the aim.

"The Turf Tank runs on a completely carbon-neutral site; it's all on green energy," Operations Manager Sean explained. "The energy that charges the Turf Tank batteries comes from the sun that's shining today, so it's a fantastic example of our sustainability and priorities at Galaxy Sports Little Kerse for the way forward.

"We used to go out and manually mark the pitches, but we realised we weren't meeting the standard we wanted. Now, the lines are night



and day. They're a great standard, and the precision of the Turf Tank is fantastic. We're over the moon with it, and it's definitely saved us hours on end. We probably mark lines now for half a day and only mark out what we need, so we're saving paint and time."

Historically, leading up to athletics marking, initial rugby marking, and football initial markings, there's always been a bit of anxiety, a bit of stress, and it was a really, really anxious environment to be around.

While overall efficiency is an important aspect of the Turf Tank, its positive impact on turf teams has also been highlighted. At Dollar Academy, a co-educational day and boarding school at the base of the Ochil Hills in Scotland, Head of Grounds John Vaughan-Davis and his team have experienced an improvement in their mental health since using the robot.

"I think the mental health of our team has improved because



of the Turf Tank," John begins. "Historically, leading up to athletics marking, initial rugby marking, and football initial markings, there's always been a bit of anxiety, a bit of stress, and it was a really, really anxious environment to be around.

"Now that we've got the Turf Tank, it's completely changed the team's mindset. It's gone from being tense to just relaxed and having faith and trust in the Turf Tank. It just eased everyone's concerns. It's made a much better working environment for all of us leading up to those points by removing an added stress and taking it away."

For more information visit www.turftank.com

Watch video: <https://www.youtube.com/watch?v=riqu2Q8uWTo>

TURF TANK RETURNS TO GROUNDSFEST 2024

REVOLUTIONISE YOUR LINE MARKING

BOOTH #OSA481

- THE WORLD'S BEST-RATED AUTONOMOUS LINE MARKING SOLUTIONS.
- FLEXIBLE SUBSCRIPTIONS FOR ORGANISATIONS OF ANY SIZE. A MORE AFFORDABLE ENTRY POINT COMPARED TO OUTRIGHT PURCHASES.
- USER-FRIENDLY ROBOTS DESIGNED FOR EASE OF USE, EFFICIENCY, AND OPTIMISED WORK CONDITIONS FOR YOUR TEAM.



TIME AND PAINT PER PITCH:

RUNNING TRACKS



1:33:30

20.81 L

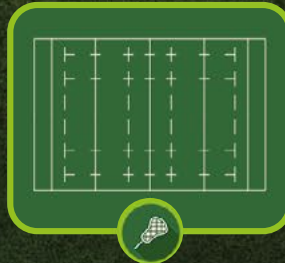
FOOTBALL



0:23:56

3.86 L

RUGBY



0:33:46

5.74 L

ROUNDERS



0:05:57

0.7 L

WIN THE UNION JACK TURF TANK!

Visit stand #OSA191 and enter the raffle for a chance to win the Union Jack Turf Tank Robot!



Avant Power battery factory in full swing

500 electric loader batteries in under 6 months

Battery developer and manufacturer Avant Power, the new subsidiary of loader manufacturer Avant Tecno Oy, has exceeded its strict targets. Double the number of batteries has been manufactured compared to the original plans.

YLÖJÄRVI, FINLAND - Battery manufacturer Avant Power has just completed its five-hundredth high-power battery for an electric loader.

“Our battery production started in February this year, so we have made 500 batteries in about five and a half months,” says Mikko Piepponen, COO of Avant Power. The battery plant’s manufacturing capacity is even increasing, as a second production line is currently being built next to the first line.

Located next to Avant Tecno’s loader factory, Avant Power has operated at record speed since the very beginning of the subsidiary. The battery manufacturer has developed a completely new product and production simultaneously in only about two years.

The Avant Group decided to start battery manufacturing because there were no batteries perfectly optimized for Avant loaders in the world, and the company had enough creative expertise to conquer this new territory.

Double the pace with dedicated collaboration

Avant Power’s rapid product development and production can



Battery manufacturer Avant Power has just completed its five-hundredth high-power battery for an electric loader.

be explained by three factors. They are the company’s own top team, excellent subcontractors, and the trust, support, and shoulders of the Avant Group.

“Seamless cooperation with professional, flexible, and responsive subcontractors has made the whole thing possible. We have developed manufacturing methods together with our subcontractors, and they have thrown themselves fully into it, even though they did not know in advance how everything would work out. That spirit of doing things is exactly what we had been looking for. In the end, we managed to manufacture double the number of batteries compared to the original plan,” Piepponen says.

The battery factory’s cooperation with the Avant loader factory has been important.

“The spirit of Avant is that everyone pulls together. Loader design has played a major role, as has the prototype workshop, marketing and sales, and the entire factory. We have all done this together,” Piepponen says.

The COO describes the battery factory’s own team as unique. “This would not be possible without good team spirit. Even a small team can be very strong when it is competent, flexible and dedicated. Now it’s time for this group to go on well-deserved summer holidays. After that, we will start a second production line, and new products are constantly being developed. We will tell you more about them later,” Piepponen promises.

For more information, please visit www.avant.co.uk

AVANT[®]

Work smart not hard.



Discover unparalleled versatility and strength with Avant Loaders. From lifting heavy loads to maneuvering with precision, our machines excel in landscaping tasks. Explore our diverse range of over 200 attachments and unleash the full potential of Avant on your business.

- ✓ Optidrive™ drive circuit gives more power for the drive and hydraulic attachments.
- ✓ Greater reach with Avant's signature telescopic boom

Learn more at avant.co.uk

Mowing made easy

The Etesia Hydro 80 at Repton School

Maintaining the expansive grounds of Repton School requires precision, efficiency, and innovation.

For Andrew Butler, Head of Grounds and Gardens, and his team, the introduction of the Etesia Hydro 80 ride-on mower has not only streamlined operations but also revolutionised the way they manage the school's green spaces.

Repton School, nestled in the serene surroundings of Derbyshire, boasts extensive grounds that demand meticulous care. From ornamental gardens to sprawling lawns surrounding boarding houses, every corner of the campus requires attention. However, with limited time and resources, the grounds and gardens team found themselves struggling to keep up with the demands of manual mowing using pedestrian mowers.

Andrew explains, "There is a lot of mowing carried out around the boarding house where the team were previously using pedestrian mowers. I felt it was just taking too long, and then other jobs were getting neglected because of it. It just felt like the gardening team were over mowing all the time, and less time was being spent on the actual gardening."

Introducing the Etesia Hydro 80, a compact yet powerful ride-on mower designed to tackle both long and short grass with ease. Featuring a hydrostatic drive and a robust 15hp twin-cylinder Kawasaki engine, the Hydro 80 offers unparalleled efficiency and output. Its specially contoured deck ensures clippings are collected without clogging, even in wet conditions, while anti-scalp



rollers maintain a pristine finish on uneven terrain.

Andrew recounts the transformation brought about by the Hydro 80, stating, "Now instead of spending all week mowing, it literally takes just a couple of days. This means that we can concentrate on the gardens instead such as getting more colour into various areas. The time management is significantly better."

One of the Hydro 80's most impressive features is its ability to navigate tight spaces with ease. Andrew notes, "The reason we were using pedestrian mowers is because there was always the problem of getting a ride-on mower in and out of gates, so we thought about taking various gates out to make the job easier, but then we came across the Etesia Hydro 80. It allows us to get into areas where previously we had to use pedestrian mowers. These areas, which previously would have taken an hour or two, are now taking just 15-20 minutes.

"Its ability to cut and collect in the rain is amazing," continues Andrew.

"Even in the heavy rain the Hydro 80 is going out and cutting, so again it improves our efficiency."

Beyond its efficiency, the Hydro 80's durability and manoeuvrability have earned high praise from Andrew and his team. "I like the durability of it, how quick it is, how easy it is to manoeuvre it, and how it can get through longer grass with no problem at all," Andrew remarks.

As Repton School continues to uphold its reputation for excellence, the Etesia Hydro 80 stands as a testament to the power of innovation in grounds management, ensuring that the campus remains a source of pride and inspiration for all who visit.

For further information, please contact Etesia UK on 01295 680120 or visit www.etesia.co.uk.

For more news, reviews and insightful views, you can follow Etesia UK on Twitter @EtesiaUK and like the company's Facebook page - www.facebook.com/EtesiaUK. You can also view the latest Etesia videos by visiting www.youtube.com/EtesiaUK.

Unrivalled Cut and Collect in any weather.



**2 Year Commercial
Warranty as standard**

**The best cut
and collect
ride-on mowers
on the market.**

The Etesia range of ride-on rotary mowers sets the industry standard.



Hydro 124
124cm cutting width
Electric or hydraulic lift options
2WD or 4WD models



Buffalo 124
Briggs & Stratton 23hp
124cm cutting width
2WD or 4WD models



Buffalo 100
Briggs & Stratton petrol
or Perkins diesel
100cm cutting width
2WD or 4WD models



Hydro 100 III
Kawasaki - Twin Cylinder
100cm cutting width



Hydro 80
Kawasaki 16hp
80cm cutting width
Optional differential lock



Bahia
Kawasaki, Honda or
Briggs & Stratton
80cm cutting width
Electric version also
available

Full product details at www.etesia.co.uk
Contact us to arrange a free onsite demonstration
on **01295 680 120** or sales@etesia.co.uk

Etesia UK @EtesiaUK EtesiaUK @EtesiaUK

ETESIA

THE ETESIA RANGE OF RIDE-ON MOWERS



FULLY AUTONOMOUS COMBO MOWER AND LINE MARKING ROBOT LAUNCHED IN THE UK

Fully autonomous combo mower and line marking robot launched in the UK: World's first combination robot offers multi-function turfcare solution.

XDC Autonomous Solutions has been appointed UK distributor of the RM21 Combo robot from FJ Dynamics. With its unique configuration, the RM21 offers a cutting deck and line marker to

enable autonomous mowing and marking from the same unit.

Attendees to Groundsfest will be able to get a first look at the RM21 Combo on the XDC stand RB380.

The RM21 is easy to set up and operate, with users able to easily switch between line marking and mowing functions. It can be controlled via the supplied bespoke tablet or screen on the actual robot, with an app also available for remote operation, task scheduling, monitoring, and history log via a mobile device.

Where the RM21 Combo is unmatched is the inclusion of the line marking sprayer in the same robot. The simple and intuitive user interface on the tablet enables fast and simple plotting of pitches, training grids, and other layouts. Even bespoke plans are available as CAD's can be supplied or layouts created from customer designs that quickly convert into a route plan on the tablet.

The sprayer mechanism can be adjusted to mark line widths of 50-160mm and can accommodate different nozzles and paints to deliver the optimum combination of line quality, longevity, and paint consumption. A 48V ultra-long life lithium battery and large 25L paint container allows the marking of several pitches one after the other, and for those using 5L pre-mixed paint pouches to refill the container, the large capacity can also offer a solution to the environmental issue of disposing of plastic paint tubs.

Designed for multiple scenarios, including sports pitches, golf courses, racecourses, solar farms, estates and orchards, the RM21 mower features an intelligent control system, pure electric drive, and a large-capacity battery to maximise mowing efficiency, saving time and money, and freeing up resources to focus on other tasks.

With a choice of Eco, Normal and Power blade mode, mowing speed and cutting height

adjustability from 20 to 127mm (0.8 to 5") different levels of cut and finish can be achieved from the standard rotary mower, with greater precision mowing available via the optional cylinder deck attachment.

Paused and completed operations are all recorded; with the user able to select an interrupted operation and click Continue to pick up from where it was paused or select a completed operation and tap Restart to perform the operation again in full.

Charging can be carried out manually via mains connection, or the included charging station. The station enables users to benefit from 24/7 operation as the RM21 will return to it for charging when the battery is low, before heading back out and picking up where it left off without manual intervention, significantly improving work efficiency.

Safety is paramount for autonomous operation; 360° real-time object detection is provided by LiDAR to constantly monitor the surrounding area, detecting obstacles and ensuring there are no blind spots. Smart Path Planning uses built-in object avoidance to automatically plan mowing paths, helping prevent collisions and damage to make mowing safer and easier. In addition, the RM21 features collision bumpers, lift protection, and rain monitoring, plus controllable lights to make it



Designed for multiple scenarios, including sports pitches, golf courses, racecourses, solar farms, estates and orchards, the RM21 mower features an intelligent control system, pure electric drive, and a large-capacity battery to maximise mowing efficiency, saving time and money, and freeing up resources to focus on other tasks.

more visible in the dark.

Supplied with a Radio RTK station the RM21 Combo produces centimetre-level positioning accuracy for precision mowing and marking, with the LiDAR technology creating a 3D cloud point map of the terrain to allow it to safely mow in complex areas, such as under trees or around objects.

XDC's Director of Sales, Matt Murray commented "We are delighted to be working in partnership with FJ Dynamics and offering this technologically advanced solution to the UK turfcare industry." Matt added "Having been involved with autonomous solutions for several years I've seen how more customers are now embracing robotic technology to assist with their time consuming, day to day jobs. Having one heavy-duty machine that offers an extremely competitively priced single solution for mowing and marking takes things to the next level. The RM21 Combo is like a Swiss army knife; in addition to the rotary mower and line marker, there's the optional cylinder mower, plus different attachments available including brushes and rollers for pitch striping, grass collection, and more in the pipeline for even greater flexibility."

For more information on the RM21 Combo and XDC's range of autonomous solutions please visit www.xdc-as.co.uk

Foley brings live relief grinding to GroundsFest 2024

Foley Company's UK and Ireland distributor, ProSport UK Ltd, will be on stand OSA540 at GroundsFest 2024, demonstrating the unrivalled benefits of relief grinding and the new floor level Foley 642 Quick Spin Reel Grinder.

Foley's automated Accu-Pro 633 cylinder grinder and Accu-Pro 672 bedknife grinder will be in action across the two days, allowing people to experience the whole process from setup to the finished product.

The automated features on the Accu-Pro 633 provide a step-by-step tutorial for new technicians and a quicker setup and spin grind feature for the more experienced operators. You tell the machine what you're working on, and it automatically spin or relief grinds to completion.

Pre-programmed spin speeds, relief torque, and in-feeds are only a few features in the ACCU-Touch 3 system that ensure efficiency and guarantee a quality grind with every use.

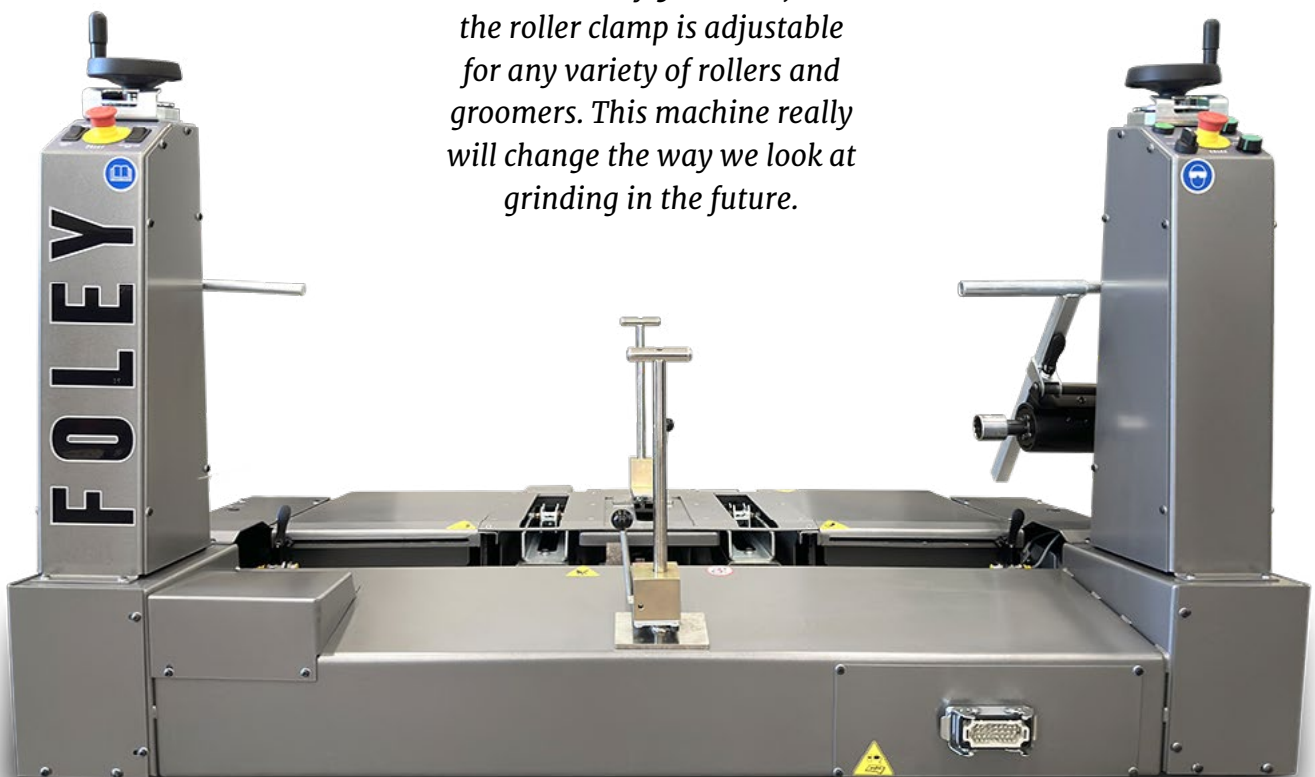
Joining the two machines will be Foley's new floor level 642 Quick Spin Reel Grinder. The new grinder is designed to accommodate the widest of mower cylinders and is a simple roll-on roll-off solution to grinding, with the machine sitting at floor level. The roll-on roll-off solution removes the need for heavy lifting facilities, revolutionizing how equipment managers view touch-up spin grinding.

It offers a fast, easy-operated option for providing a quick touch-up spin between regular relief grinding schedules, and is a solution for sharpening the extra wide, heavy mowers used on sports fields/pitches. The Foley 642 Quick-Spin features simple to use controls, counter balanced spin drive, patented front and rear clamping system for pedestrian mowers, and power rear positioning levers for cylinders. It will accept up to 42-inch reel width and operates on 240v/15a power.

Speaking about the machine, Foley President and CEO Paul Rauker said: "The 642 Quick Spin Reel Grinder is the first of its kind, and I'm delighted to acknowledge the significance of our latest development.



The patented clamping system effortlessly secures any cutting unit in all configurations, and the roller clamp is adjustable for any variety of rollers and groomers. This machine really will change the way we look at grinding in the future.





It is a machine that will appeal to all grounds professionals who are looking to improve the performance and efficiency of their grinding programs. As the leading manufacturer of grinding equipment, Foley is once again leading the way in grinding technology. We have developed and patented simple to use controls to save time without compromising on performance.

“The patented clamping system effortlessly secures any cutting unit in all configurations, and the roller clamp is adjustable for any variety of rollers and groomers. This machine really will change the way we look at grinding in the future.”

ProSport UK Ltd’s Ian Robson will run demonstrations throughout both days of GroundsFest and be available to discuss any questions or requirements.

www.prosportukltd.com

TURF IS
BETTER
WITH
FOLEY

THE WORLD'S TOP COURSES CHOOSE

FOLEY

ProSport^{UK}

+44 (0) 7779 270501 | prosportukltd.com



Agrovista amenity to make exciting debut at GroundsFest 2024

Agrovista Amenity has announced that it will be exhibiting at GroundsFest 2024. Following the resounding success of the event's debut last year, the company is eager to showcase its innovative and sustainable products to a broader audience.

Agrovista Amenity offers a wide range of products designed to meet the needs of professionals across the industry.

Visitors to GroundsFest can find Agrovista Amenity at stand L151 in the Landscape Zone. This dedicated area highlights the latest outdoor environment technologies and innovations, making it a must-visit for landscape architects, garden designers, contractors, and other professionals in the industry.

At GroundsFest, Agrovista Amenity will focus on showcasing several key products, including:

Tree and hedge planting range: As exclusive distributors of Tree Hugger and WhiptecBio guards, Agrovista is committed to providing affordable and sustainable tree, hedge, shrub, and vine guards that are completely plastic-free, eliminating the need for collection and disposal.

Planting sundries: Essential tools and materials for successful planting projects.

Nutrition: Solutions to support healthy plant growth and development.

Grass and wildflower seed: High-quality seeds for creating beautiful and sustainable landscapes.

Hard and soft landscaping supplies: Including reinforcement mesh and rubber grass mats.

Equipment and workwear: Durable and reliable products designed for the demands of landscaping professionals.

Agrovista Amenity is excited to be part of this dynamic event and looks forward to engaging with industry professionals, sharing their expertise, and demonstrating their cutting-edge products. Be sure to visit stand L151 in the Landscape Zone to discover how Agrovista Amenity can help you achieve your landscaping goals with sustainable and effective solutions.

For more information about Agrovista UK, visit www.agrovista.co.uk/amenity

Baroness fleet proves to be a 'gamechanger' for the team at Southwick Park

Built up over the last six years, a fleet of eight mowers from Baroness have played a pivotal role in the significant improvements in course condition at Southwick Park Golf Club. Attaining a consistent and outstanding quality of cut in conditions described as a 'grass factory' by Course Manager Jim Fancey isn't easy, but it's what he says they're achieving day-in, day-out with their suite of ride-on and pedestrian mowers.

The course, widely regarded as 'Hampshire's Hidden Gem', is located in the countryside on the outskirts of Portsmouth though for Jim - who has been with the club for the last nine years - things haven't always been plain sailing! "When I joined the club, I was faced with a shed full of archaic and underperforming machinery" he explains "which was costing the club in terms of downtime, repair bills and what we could realistically achieve results-wise. When we were able to look at investing in new equipment, a triple greens mower was high on the priority list and that's where our relationship with Baroness began six years ago. We've not looked back since!"

Jim's first purchase was an LM315 triple greens mower which has since been joined by a second LM315, together with an LM331 for use on surrounds, an LM551B fairway mower, a GM2810A five-deck rotary mower and, most recently, another LM56GC pedestrian cylinder mower to add to the two previously purchased.



"Baroness talk a lot about both the quality of cut and how the units stay on-cut better than the competitors and they're true to their word" Jim says. "Our site is a bit of a grass factory and our fleet cope with this vigorous growth, staying on-cut and incredibly sharp - saving the club thousands of pounds every year on re-grinding fees. They're robustly built, reliable and intuitive to operate." He continues, "The GM2810A in particular has proven incredibly versatile. You can change the cutting height in a matter of minutes meaning that when worm casts appear in the winter months, we can quickly adjust the height and rotary cut fairways to give us the presentation we need without the issue of blunting cylinder blades on the LM551."

When it comes to winter, Jim is now well placed to weather the challenges posed by softer ground conditions with a trio of LM56GC pedestrian mowers. "These have been an absolute gamechanger for us, delivering a fantastic cut and finish on the greens, tees and approaches." He adds, "We'll also use the LM56 machines for tournament preparation to give us that extra finishing touch."

"The club, the management, the players have all noticed the site-wide improvements and, for us, we've demonstrated how quality machinery makes all the difference. We also can't praise Adam Butler and Luke Collins from Baroness, and the team at Lister Wilders, enough for their fantastic support and back-up which has always been second to none."

www.baronessuk.com

Pellenc portfolio to shine at GroundsFest

Pellenc UK is set to impress at GroundsFest 2024, taking place at Stoneleigh Park, Warwickshire on 10 and 11 September.

Attendees can look forward to an exciting display of Pellenc's innovative, battery-powered equipment.

Over recent years, Pellenc has established itself as a leader in the market by offering an exceptional line of 'zero emission' battery-powered tools. This success is largely due to their advanced Lithium-ion ultra-high-performance batteries.

Visitors to the Pellenc stand (OSA150) will have the opportunity to explore an extensive array of top-tier equipment. The impressive Pellenc product lineup includes chainsaws, pole saws, hedge cutters, grass trimmers, brushcutters, blowers, and mowers.

Throughout the two-day event, the



Pellenc team will be on hand to provide expert assistance and advice on all battery-powered tool enquiries.

Pellenc stands out in the industry with its generous warranties, offering a four-year commercial warranty for all

batteries and a three-year warranty for all tools.

Pellenc is distributed exclusively in the UK by Etesia UK.

www.etesia.co.uk/pellenc

Explore SISIS's innovations at GroundsFest 2024

GroundsFest 2024 attendees can look forward to seeing SISIS in Outside Area A on stand number OSA170, where a variety of innovative turf maintenance products will be on display.

This year, the focus will be on three key products: the Quadraplay, the Variseeder, and the Rotorake TM1000. In addition to these highlights, visitors will have the opportunity to explore other products from the extensive SISIS range.

Quadraplay: Versatile Maintenance System

The Quadraplay is a multi-functional maintenance system that can perform up to four operations simultaneously. It's

compatible with any tractor with a 3-point linkage, making it versatile for use on natural turf and hard porous surfaces. Key features include interchangeable implements, adjustable settings, and robust construction for low maintenance.

Variseeder: Efficient Overseeding

The Variseeder is a compact, tractor-mounted overseeder ideal for renovation and repair work. It features a studded roller that prepares the seedbed, variable seed rates, and easy attachment to any tractor. Overseeding can be done without disrupting play, making it a convenient and efficient solution.

Rotorake TM1000: Thatch Management

The Rotorake TM1000 is designed for effective thatch removal and control. It features quick-release interchangeable reels, contra-rotating blades for a clean cut, and a floating unit that follows ground contours. The machine ensures fast ground coverage and easy depth adjustment, making it a reliable choice for turf maintenance.

Don't miss the opportunity to discover how the Quadraplay, Variseeder, and Rotorake TM1000 can enhance the efficiency and effectiveness of your operations.

For further information or a no obligation demonstration, please contact SISIS on 01332 824 777 or visit www.sisis.com



Rotherham Golf Club's greens flourish with Mansfield Sand's MM35

Andy Unwin, Course Manager at Rotherham Golf Club, relies on Mansfield Sand's MM35 for top dressing, ensuring the greens remain in impeccable condition year-round.

Rotherham Golf Club, established in 1903, is celebrated for its rich history and picturesque parkland setting. Designed by Open Champion Sandy Herd and later modified by the famed James Braid, the course offers a challenging yet enjoyable experience for golfers of all abilities. With rolling tree-lined fairways and meticulously cared-for greens, the course has hosted top professionals and amateurs alike.

Andy, who has been associated with Rotherham Golf Club for 15 years, is committed to upholding the course's prestigious reputation. With a dedicated team of six members of staff, he ensures the greens are in pristine condition, utilising Mansfield Sand's MM35 Golf for top dressing. "We use MM35 Golf from Mansfield Sand because we think it is the best top dressing for the greens - and certainly the most compatible," Andy explains.

"Every fortnight through the growing season, we apply a light top dressing of 5 tonnes. In the spring and autumn, we do a heavier top dressing, applying 30 tonnes each time."

Mansfield Sand's MM35 Golf, a pure silica sand sourced from the company's Two Oaks Quarry, is renowned for its benefits, including improved recovery, firmness, smoothness, and an enhanced rootzone. "We use it mainly for smoothing the surface out," Andy notes. "It helps drainage and the overall health of the grass."

Andy's relationship with Mansfield Sand spans his entire 21-year career as a greenkeeper. "We've had a really good relationship with the company over the years," he says. "Louise Barrington-Earp, our rep at Mansfield Sand, has been really good. Louise visits us regularly and is always available on the phone if ever we need anything. If I ever need advice, Louise is quick to offer their assistance."

Rotherham Golf Club's use of MM35 Golf underlines the product's exceptional quality and reliability. "We have never used anything else and wouldn't need to because the product is fit for purpose," Andy says. The superior performance of MM35 Golf ensures that Rotherham Golf Club's greens remain smooth, well-drained, and healthy, providing an optimal playing surface for golfers year-round.

For more information visit www.mansfield-sand.co.uk

Mansfield Sand

**A range of products created by nature
...perfected by Mansfield Sand**

Mansfield Sand is one of the UK's leading providers of silica sand based products for the whole sports turf industry, including major sporting venues and stadiums.

Mansfield Sand

Tel: +44 (0)1623 707555
email: info@mansfield-sand.co.uk
www.mansfield-sand.co.uk

Dennis to Exhibit E-Series at GroundsFest 2024

Dennis is set to make a significant impact at GroundsFest 2024, showcasing an impressive range of battery-powered products on stand 50 in Hall 2 at Stoneleigh Park, Warwickshire, on September 10 and 11.

This year, Dennis will highlight the revolutionary ES-34R, the innovative Multi Charger Hub, and the versatile ES-22U, all part of the acclaimed E-Series that has taken the industry by storm with its power, battery range, and performance.

Since its launch, the Dennis E-Series has stood out from the competition, offering reliable and long-lasting battery-powered mowers that are no-compromise alternatives to traditional petrol machines. These mowers boast ultra-low noise, low vibration, user-friendly operation, and a significantly reduced CO2 footprint, helping users move towards their carbon-neutral goals.

Featured Products at GroundsFest 2024:

Multi Charger Hub

The newly launched Multi Charger Hub is an efficient and easy-to-manoeuvre mobile unit capable of recharging up to eight large E-Series machines sequentially. Designed with convenience in mind, it includes individual cable connections to avoid multiple unused wires, top box storage for charger cables, and under-cabinet storage for spares. The Hub features an intelligent system that cycles through each connected



Dennis is set to make a significant impact at GroundsFest 2024, showcasing an impressive range of battery-powered products.

mower, displaying the state of charge (SOC) on a screen, and shuts down each mower at 100% to prevent overcharging. With the ability to charge all connected mowers overnight from 10%-15% to 100%, the Multi Charger Hub is a game-changer.

ES-34R Rotary Mower

The ES-34R is designed for precision and efficiency. It features twin contra-rotating blades with a height-of-cut controlled by an easy-to-use 'click' system. The suction and blade speed can be adjusted to meet the most challenging collection conditions. Optional front wheels and a choice between a smooth or weile roller enhance its adaptability. With excellent sight lines and robust performance, the ES-34R ensures superior turf maintenance.

ES-22U Ultra Mower

For those familiar with the Dennis Razor Ultra, the ES-22U is a standout choice for fine turf care. This 560mm (22") battery mower features an ultra-short wheelbase, making it ideal for undulating

surfaces. Equipped with a 7 or 11-bladed cutting cylinder and groomer reel, the ES-22U delivers an ultra-fine finish on bowling greens, golf greens, tees, and cricket pitches. Its precision and adaptability make it a favourite among professionals seeking top-tier turf maintenance.

The E-Series mowers are equipped with a robust LCD keypad screen, providing operators with essential information, including speed, clip rate, service checks, lifetime running reports, and battery status. With an ultra-fast full battery recharge time of just 2-3 hours, the E-Series mowers ensure that downtime is minimised, keeping grounds staff productive and efficient.

GroundsFest 2024 attendees are invited to visit Dennis on stand 50 in Hall 2 to explore these innovative products and learn more about how Dennis is driving the future of sustainable turf maintenance. Don't miss the opportunity to see firsthand how the E-Series and the new Multi Charger Hub can make a difference to your operations.

For further information or a no obligation demonstration, please contact Dennis 01332 824 777 or visit www.dennisuk.com

For more news, reviews and insightful views, you can follow Dennis on Twitter and Instagram @DennisMowers and like the company's Facebook page - www.facebook.com/DennisMowersUK. You can also view the latest Dennis videos by visiting www.youtube.com/DennisMowers



Etesia UK gears up for GroundsFest 2024

Etesia UK is excited to return to GroundsFest for the second consecutive year. Attendees can visit stand OSA150 at Stoneleigh Park, Warwickshire, on 10 and 11 September to explore Etesia's impressive lineup, including pedestrian and ride-on mowers, brushcutters, and the award-winning ET Lander electric utility vehicle.

Etesia UK, known for its high-quality grass cutting equipment, will unveil the ET Lander's new differential lock feature, which enhances traction and versatility for off-road use. This innovative electric utility vehicle is fully N1 homologation compliant, making it road-legal and capable of

extended off-road use. Its lithium-ion batteries offer a range of up to 100km and compatibility with standard type 2 EV car chargers.

The ET Lander, a 100% electric vehicle, is spacious, user-friendly, and built on a robust chassis. It boasts a three-way tipper bed with dual control from the two-seater cab or remote control. With a compact length of 3.72 meters, power steering, a short turning radius of 4.40 meters, and 360° visibility, it manoeuvres easily in tight spaces. The vehicle can transport loads up to 940kg and tow up to 750kg, with a full day's autonomy and no noise pollution.

Etesia will also feature the Electric Bahia M2EL, the world's first 100% electric professional ride-on mower

with grass collection. Powered by a 48V, 100Ah lithium battery, the Bahia M2EL offers up to 4 hours and 30 minutes of operation on a single charge. Its compact size, tight turning circle, and excellent stability on slopes make it ideal for various mowing tasks.

The electric Bahia is also highly economical, with running costs of £0.35 compared to £3.57 for its petrol counterpart, and reduced maintenance needs.

Etesia's knowledgeable staff will be available throughout GroundsFest to provide expert advice and assistance on all products.

For further information, please contact Etesia UK on 01295 680120 or visit www.etesia.co.uk

Hunter Grinders Returns to GroundsFest 2024

After a successful GroundsFest 2023, Hunter Grinders is excited to announce its return to GroundsFest 2024, where it will be showcasing the enhanced Jupiter ATI 'All in One' Grinder.

The Jupiter ATI is a fully automatic relief spin grinder, designed to deliver precision grinding at its best. It features automatic traverse, indexing, and in-feed, ensuring that every grind is accurate and consistent. This machine meets all CE compliance standards and Health and Safety requirements for noise, vibration, and airborne dust particles.

Key Features of the Jupiter ATI:

• **Fully Automatic Operation:**

The grinder can be set to operate independently, allowing operators to perform other tasks simultaneously.

• **Precision Grinding:** Achieves original manufacturer's specifications for returning cylinders and bottom blades.

• **Stable and Accurate:** The cast bed provides stability, and heavy-duty linear bed rails ensure smooth and accurate traverse of the grinding wheel to within 0.05mm.

The Jupiter ATI is a fully automatic relief spin grinder, designed to deliver precision grinding at its best. It features automatic traverse, indexing, and in-feed, ensuring that every grind is accurate and consistent.



Hunter Grinders Returns to GroundsFest 2024.

• **Operator Safety and Comfort:**

Liquid coolant prevents airborne dust and heat distortion, maintaining operator comfort and safety.

• **Versatile Tool:** The 360-degree electric 200kg hoist can be used for other heavy lifting tasks in the workshop.

• **Comprehensive Capabilities:** Grinds both top and front faces of the bottom blade, takes data measurements from the cylinder shaft, and has a 1067mm (42") cylinder & bottom blade capacity.

• **Programmable Grinding:** Fully programmable for relief and spin grinding, with automatic docking of the wheel head and cycle countdown.

• **Robust Construction:** Features a cast bed, liquid coolant on all operations, 240-volt power supply, linear bed rails with self-adjusting bearings, and a slow/soft start spin grinding motor.

• **Additional Features:** Flexi drive to cutting cylinder, bearing pack, universal bracket pack, hands-free indexing attachment, twin LED work lights, fully enclosed guard, variable speed spin and traverse motor, 3" wheel head attachment, rotary blade attachment, two emergency stop buttons, and full installation and training.

Hunter Grinders invites all GroundsFest 2024 attendees to visit Stand 50 in Hall 1 to learn more about how this state-of-the-art machine can enhance your grinding operations.

For further information or a no obligation demonstration, please contact Hunter Grinders on 01332 824 777 or visit www.huntergrinders.com

For more news, reviews and insightful views, you can follow Hunter Grinders on Twitter and Instagram @huntergrinders and like the company's Facebook page - <https://www.facebook.com/HunterGrinders/>

DSV to Unveil EUROBEAT at GroundsFest 2024

DSV is set to make a significant impact at this year's GroundsFest, introducing their latest innovation in grass seed, EUROBEAT, on stand 29. The event will take place on September 10 and 11 at Stoneleigh Park, Warwickshire, offering attendees a chance to discover this high-performing addition to DSV's renowned range of grass seed.

Introducing EUROBEAT

EUROBEAT is a top-tier ryegrass specifically bred for sports applications. Its performance in the Sports Turf Research Institute (STRI) test series has been outstanding, earning a TOP 10 rank and demonstrating the superior capabilities of DSV's turfgrass breeding department. EUROBEAT boasts exceptional summer and winter appearance scores, setting it apart as a top performer in traffic tolerance, crucial for sports pitches.

Key Benefits of EUROBEAT:

Optimised for Sports Pitches: EUROBEAT's design caters specifically to the rigorous demands of sports environments.

Superior Wear Resistance: With a 20% improvement over standard ryegrass, EUROBEAT excels in durability.

Year-Round Performance: High aspect scores in both summer and winter ensure a consistently attractive and resilient turf.



Ideal for Overseeding: EUROBEAT's characteristics make it perfect for enhancing older pitches and supporting autumn sowing for winter appearance boosts.

EUROBEAT's versatility makes it an excellent choice for renovation mixtures, providing an upgrade in both performance and quality for existing sports fields.

www.dsv-uk.co.uk

PURE PERFORMANCE

Eurograss Pro Range – New exclusive range created by top breeder DSV.

High performance grass mixtures specially selected for professional sports surfaces.



Scan to view our website

Contact our team on: 01295 758800

www.dsv-uk.co.uk/products/amenity

@DSVEUROGRASS



EUROGRASS®

dsv-uk.co.uk

Take on the 'Aspen Challenge' at GroundsFest 2024

Stand OSA490

Improving the working environment of landscapers and ground professionals for over 40 years, Aspen Fuel will be returning to GroundsFest 2024 to showcase the many benefits of their 2 and 4-stroke Alkylate petrol. Stand OSA490 is the place to find out more and also the place where brave participants can partake in the 'Aspen Challenge' for the chance to win some awesome Aspen prizes!

Aspen alkylate petrol is virtually free from sulphur, benzene and solvents making it much less harmful than regular petrol. The reduction in hazardous and toxic hydrocarbons contributes to a cleaner burn, improving not just the reliability of the engine but the immediate operator environment - freeing users from headaches and other health concerns associated with working in close proximity to petrol-powered equipment.

Standard E10 pump fuel now contains around 10% ethanol, the moisture-attracting properties of which can often be the cause of starting difficulties or engine failures in smaller equipment such as strimmers and leaf blowers. Ethanol-free Aspen 2 with its cleaner combustion leaves very little residue or carbon deposits, extending engine lifespan and retaining its original performance for longer.

The benefits for the equipment and the operator, together



with a reduction in environmental impact, make Aspen a versatile and economically-viable choice for operators in all sectors looking to move towards more sustainable working practice. Those wanting to discover how Aspen can change their own working environments can also enquire about the risk-free, money-back trial which enables business owners to try Aspen without incurring any increase in their fuel cost, and the option to return the unused fuel if they don't 'experience the difference'.

Visitors will also have the opportunity to test their strength in the 'Aspen Challenge' which returns for another year - with the chance to win some fantastic prizes over the course of the two days!

www.aspenfuel.co.uk

Redexim bring raft of new products to GroundsFest 2024

Stand OSA230

Redexim UK are set to make an impressive debut at GroundsFest, with a raft of never-been-seen solutions for natural turf management on stand OSA230. While some of the finer details are being kept strictly under-wraps, visitors are assured to see a new, modern solution to the effective mechanical maintenance of hybrid and natural surfaces alongside the first UK outing of Redexim's Verti-Air® collection.

The Verti-Air® range of PTO-driven blowers marks a logical extension of the Redexim portfolio, catering to the leaf and debris clearance requirements of those working in the golf and sports turf markets, together with local authorities and other green space managers. Three models make up the range, including the Verti-Air® 7 - a compact and lightweight blower with a reverse exhaust nozzle which can be operated from the driver's seat. The high-power of the Verti-Air® 7 combined with ease of adjustment and manoeuvrability makes the unit ideal for leaf clearance on golf course pathways, roadside verges or carparks.

Also on stand OSA230 will be a selection of machines from the Redexim landscaping range, including the Multivator 1800. Featuring a roller equipped with nine durable carbide-tipped blades spaced at 200mm, the Multivator decompacts and simultaneously lifts and recycles the existing soil and



rootzone material to provide an environmentally-effective method of topdressing.

With a comprehensive collection of mechanical solutions to the environmental problems faced by the turf managers of today, a stop by the Redexim stand is a must for all of those in attendance across the 10th and 11th September.

www.redexim.com

Explore Mansfield Sand's premier sports turf solutions at GroundsFest 2024

V

isitors to the Mansfield Sand stand (OSA260) at GroundsFest 2024, taking place at Stoneleigh

Park, Warwickshire on 10 and 11 September, can expect to see a comprehensive range of sand-based products vital to the overall health and performance of sports pitches.

For over 180 years, Mansfield Sand has pioneered the development and production of premium silica sand-based products. The company provides a wide range of innovative products for sports, landscaping, and equestrian uses, including stadium and training ground facilities, championship golf courses, and world-class show jumping arenas.

The company's leading experts will be on hand at GroundsFest 2024 to explain how some of the following products could make a difference to your sports turf projects.

Reinforced Rootzone

Mansfield Sand offers a range of Reinforced Rootzones designed to maximize the use of natural turf surfaces while maintaining the high standards demanded by today's sports industry. Mansfield Sand's reinforcement technology provides stability and durability to all sand-dominated Rootzones, allowing the pitch to remain free-draining and consistent across the entire surface.

Products include:

- **Fibre Reinforced Rootzone** - reinforced with polypropylene fibres.
- **Fibrelastic Rootzone** - reinforced



with polypropylene fibres and flexible Elastane fibres.

- **Fibresand** - particularly advantageous when grass cover has been reduced due to heavy usage and wear during the winter period.

Sand Soil Rootzones

Understanding the demands of turf managers, Mansfield Sand ensures that their rootzones contain only the highest quality materials. For renovation or construction, the company's superior rootzone blend, Mansil 40 Silica Sand with quality screened topsoil, guarantees the perfect start.

Sand Compost Rootzones

Mansfield Sand offers a range of premium quality sand organic material blends, ideal for creating a rootzone rich in organic material. These blends aid in the retention of nutrients and provide increased drought resistance.

Top Dressing

Produced for the fine turf market, Mansfield Sand's Soil Top Dressing

is a manufactured homogenous product made from their own premium silica sands combined with top quality soils. All components are passed through a sterilising unit and a 3mm screen to produce an easy-to-spread, stone and pebble-free dressing. Mansfield Sand also offers bespoke dressing blends and can incorporate soil amendments into any product.

Mansil Silica Sand Sports Range

Sourced from the company's Two Oaks Quarry in Mansfield, the Mansil range of Silica Sands is predominantly used in the construction and maintenance of a wide variety of sports surfaces, including winter sports pitches, golf courses, bowling greens, and all amenity turf areas.

Visit Mansfield Sand at GroundsFest 2024 to discover how their cutting-edge products can elevate your sports turf projects to new heights.

For more information visit www.mansfield-sand.co.uk

Syn-Pro by SISIS at GroundsFest

Syn-Pro by SISIS is gearing up for GroundsFest 2024, set to take place at Stoneleigh Park, Warwickshire, on September 10 and 11. You can find Syn-Pro by SISIS in Outdoor Area A on stand OSA170, where a wide range of advanced synthetic turf maintenance products will be on display. This year, the spotlight will be on three main products: the SVR1500, the SSS1000, and the Osca.

SVR1500: Deep Cleaning and Decompaction

The SVR1500 is a dual-purpose machine designed for deep cleaning and decompaction of sand or rubber-filled surfaces. Its large rotating brush lifts contaminated infill, removes fine dust and debris, and returns cleaned infill back to the surface, improving water permeability and reducing bacteria and moss.

SSS1000: Essential Sweeper for Synthetic Surfaces

The SSS1000 sweeper is vital for regular cleaning of synthetic surfaces. It features a spiral rotary brush that sweeps debris into a mesh hopper, allowing pitch infill to be returned to the surface. It's designed to efficiently remove organic debris and litter, ensuring a clean and safe playing area.

Osca: Dual Purpose Brushing System

The Osca is a versatile brushing system ideal for both sand and rubber crumb maintenance. It features oscillating



brushes for aggressive brushing to reduce compaction and encourage fibres to stand upright. It can also be used as a conventional drag brush for regular light brushing, helping maintain an even playing surface and reduce moss and algae.

Discover the SVR1500, SSS1000, and Osca, and explore other advanced solutions from Syn-Pro by SISIS at GroundsFest 2024.

For further information or a no obligation demonstration, please contact Syn-Pro by SISIS on 01332 824 777 or visit www.synprobyisis.com

Don't compromise on preparations!

Remove contaminants, level the ground and create the perfect seedbed for the next stage of any project with our range of seeders, levellers, earth movers, rakes and cultivators.



Laser Grader



Bleccavator



Cultipack Seeder

See us at
GroundsFest
on Stand
OSA230

Redexim



BIGGA
Regional Partner

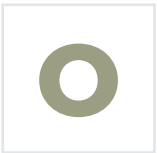
redexim.com

01428 661222 - sales@redeximuk.com



Origin Amenity Solutions marking out the future at GroundsFest 2024

Stand OSA 240 – Outdoor Arena



Origin Amenity Solutions (OAS) has announced its return to GroundsFest for the 2024 exhibition after a successful

debut last year. OAS will showcase its comprehensive range of products and services, aimed at servicing the fine turf, sports, and grounds care sectors. You can find their prominently branded trailer and dedicated team in the outdoor arena on stand OSA 240.

Focus on Line Marking Excellence

With an expanded team of line marking specialists, OAS is positioned to offer the most comprehensive line marking solutions and support in the UK. Visitors to the stand will have the opportunity to see a diverse range of line marking machines, from pedestrian spray markers to the latest innovations in GPS-guided TinyLineMarker robotic line markers. Experts will be on hand to demonstrate these cutting-edge machines and discuss their applications in various settings.

Additionally, they will be highlighting their industry-leading IMPACT ready-to-use paint range, known for its durability, vibrancy, and ease of application. This paint range, coupled with advanced line marking equipment, ensures that every marking project is executed to the highest standards.

Exclusive Show Offers

Exclusive show offers will be available to show visitors. Furthermore, an exciting competition will be announced on



the stand which is likely to attract a lot of attention.

Looking to the future

Reflecting on the past year and looking ahead to the future, Glen Howard, OAS Line Marking Product Manager, shares his thoughts: "I am incredibly proud of the progress we have made over the past year. Our dedicated line-marking team is a testament to our commitment to innovation and excellence. At GroundsFest 2024, we are excited to showcase our product range and demonstrate how our solutions can make a real difference for our customers. Our goal is to continue leading the way in line marking technology and support, ensuring that our clients receive the best possible service and products."

Continued Commitment to Excellence

OAS's presence at GroundsFest 2024 reaffirms its commitment to

providing high-quality, innovative solutions. Since the successful merging of four leading brands, OAS has continued to evolve, making strategic changes that benefit its customers. Their dedicated line-marking offering includes the widest selection of equipment, paints, and accessories available in the UK, supported by the largest sales and support team in the industry.

Join them on stand OSA 240 to experience firsthand the expertise, innovation, and customer-focused approach that defines Origin Amenity Solutions. Whether you're looking to enhance your line marking practices or simply explore the latest technology, their team is here to help you mark out the future of your grounds care needs.

For more information visit:
www.originamenity.com

Expert insights and live demos

Campey returns to GroundsFest 2024

Campey Turf Care Systems are returning to GroundsFest with a top-tier lineup of machines, including the Imants ShockWave, Dakota Turf Tender, Foley Company Air2G2 336, and Campey UNIRAKE®, which are all poised for live demonstrations.

GroundsFest's blend of outdoor and indoor stands provides an ideal platform for Campey to offer visitors hands-on insights into the operation and benefits of their machines. Reflecting on last year's event, Campey Turf Care Director Lee Morgado commented:

"GroundsFest prioritises the visitor experience, and live demos are a key component. Showing the equipment in action is invaluable, and it allows us to solve more problems for people on the stand because they can physically see what our solutions can do.

"We can demonstrate performance, operational ease, and expected results, and that really allows us to engage with customers more effectively."

Campey Machines in Action

For 2024, Campey has selected a diverse array of maintenance machines that cover aeration, top-dressing and surface grooming. The UNIRAKE® stands out for its versatility in managing organic matter. Users can easily adjust the grooming severity to remove varying amounts of material or to stand the sward up for growth, with adjustments taking less than 30 seconds.

Wide Area and Focused Aeration

The Imants ShockWave will demonstrate wide-area aeration. Renowned as the best line-



compactor for heavily used areas, it revitalises fine turf and sports fields by alleviating soil compaction, enhancing aeration, and removing surface water, all with minimal surface disruption to ensure quick and safe play resumption.

For reactive, preventative and routine aeration on smaller or concentrated areas, the Foley Air2G2 336 remains the leading pedestrian aerator. Its ability to deliver instant results and allow immediate play has cemented its place in the industry since its debut and the chance to see it in action shouldn't be missed.

Precision Topdressing

Dakota Turf Tenders are renowned for their consistency and infinite adjustment set-up. With a model for every application, it is the best top-dressing option in every situation.

Electric control boxes enable users to set and adjust the spread width precisely, ensuring an optimal application every time while spreading wet or dry material. Getting hands-on with the controls of this machine is a fantastic

opportunity to see how it can benefit your own operation.

Precision Overseeding

For areas needing overseeding where it is not possible to work with large machines, the Vredo Turf Buddy is the perfect fit. Designed for small repairs on sports fields and golf courses, the Vredo Turf Buddy is known for its precision overseeding with its slit seeding operation. It is an essential piece of equipment for improving and maintaining the quality of grass surfaces on golf courses, sports fields, and other similar areas.

For even more targeted seeding post-game, the new Campey Seed Shot deposits a precise quantity of seed into the soil for optimal germination rates.

Campey Specialists for Expert Advice

Regardless of what turf you manage, a Campey product specialist will be on hand to provide expert advice, talk turf or give live demonstrations during the two-day event.

www.campeyturfcare.com



GETTING THE JOB DONE



We're proud to supply the latest market leading, innovative turf care machinery to many of the worlds leading turf care professionals, who are responsible for some of the worlds finest sports surfaces. We're continually researching new techniques and refining existing practices.

For Campeys honest, practical advice, excellent support and aftersales service, call us on **+44 (0)1260 224568** or visit **www.campeyturfcare.com**

30+ YEARS AT THE FOREFRONT OF THE TURF CARE INDUSTRY

70+ DISTRIBUTOR NETWORK COVERING THE MAJORITY OF THE PLANET

Get ready for the Avant National Pro Challenge at GroundsFest

A vant Tecno is excited to announce its participation at GroundsFest 2024, featuring the highly anticipated Avant National Pro Challenge. Visit the Avant stand outdoors at OSA270 for an unforgettable experience!

National Avant Pro Challenge

The Avant National Pro Challenge is set to be one of the most thrilling events at GroundsFest. This exciting competition will test participants' skills through a series of tasks including slaloms, material handling, and tool changes. Competitors will navigate a specially designed track in an Avant Loader, with time penalties for mistakes and disqualification for incomplete tasks.

The challenge demands speed, precision, and agility, with tasks suited for all Avant users. The track layout will remain a secret until the day of the event, adding an extra layer of excitement. The fastest, most skilled, and precise drivers will win fantastic prizes!

The competition is open to all Avant customers and dealers, and advance registration is required. Interested participants should contact Avant to secure their spot and prove their prowess.

Featured Loaders and Attachments

In addition to the National Pro Challenge, Avant Tecno will showcase an impressive lineup of loaders and attachments designed to enhance operations:



Get Ready for the Avant National Pro Challenge at GroundsFest.

Loaders:

- Avant 225 L Cab: Compact and versatile for small-scale tasks.
- Avant 423: Agile and perfect for tight spaces.
- Avant 530 GT Cab: Offers superior comfort and control.
- Avant 635, 640, 650: Balances power and manoeuvrability.
- Avant 760i GT Cab: High-performance for demanding tasks.
- Avant 755i: Exceptional lifting capacity and efficiency.
- Avant e513: Zero-emission electric model.
- Avant 860i GT Cab: Ultimate power and versatility.
- Avant 650: Demonstrates power and versatility.
- Avant e527: Electric power for demanding environments.
- Avant 860i: Highlights unmatched lifting capacity and performance.
- Leguan 135 Neo, 190, 225: Innovative access platforms for elevated work.

Attachments:

- Mowers: Ideal for grassy area maintenance.
- Pallet Forks: Essential for material handling.
- Log Grab: Safely and efficiently handles logs.
- Branch Cutter, Stump Grinder, Tree Shear, Forestry Mulcher: Tools for tree care and maintenance.
- Root Grapple, Levelling Bucket, Timber Grab: Enhance ground preparation and material handling.
- Fast Charger: Rapidly powers electric models.
- Backhoe Remote: Remote-controlled digging capabilities.
- Pallet Forks, Rotator: Efficient material handling and rotation.
- Root Grapple, Front Rake: Ideal for ground preparation and cleanup.
- Pressure Washer: Ensures equipment cleanliness.

Join Avant Tecno at GroundsFest 2024

Don't miss out on the Avant National Pro Challenge and the chance to see Avant Tecno's innovative machinery and attachments in action. Visit stand OSA270 at GroundsFest 2024 to discover how Avant loaders can revolutionise operations across various industries.

For more information, please visit www.avant.co.uk



Nothing but HEAVY DUTY.™

M18 FUEL™ DUAL BATTERY SELF-PROPELLED LAWN MOWER 46 CM



46 CM STEEL DECK

CUTS AREAS UP TO 1,600 M²

3-IN-1 GRASS MANAGEMENT SYSTEM

MILWAUKEE® IS THE SOLUTIONS PROVIDER



**VIEW THE
RANGE**

© milwaukeetool_uk
f Milwaukee Tool UK
in Milwaukee Tool UK

milwaukeetool.co.uk

Only the best Groundwork, Drainage and Pipework products

Rouden Pipetek Ltd supplies and distributes Drainage and Pipework products from the UK's leading manufacturers. We predominantly distribute to groundwork, construction, civil engineering, and agricultural companies. We are committed to providing a first-class service and competitively priced products to all of our clients. Due to our longstanding presence within the industry (we commenced trading in May 2001), we have become reliable distributors to some of the smallest and largest businesses in the UK. Whether your requirement is for a length of pipe or a motorway drainage system, our sales team can provide a cost-effective solution to suit your needs.

To ensure our products reach you as quickly as possible, we have three Branches in the South of England. These are located in Horsham, West Sussex, Maidstone, Kent, and Petersfield, Hampshire. All of our large storage and distribution sites are fully stocked, and boast a vast and comprehensive range of pipework systems and associated products.

“

Whether your requirement is for a length of pipe or a motorway drainage system, our sales team can provide a cost-effective solution to suit your needs.

Rouden Pipetek offers a next day delivery service, with other delivery options available depending on customer requirements. Our fleet of specialist delivery vehicles and fully qualified drivers, get the products to our customers safely and efficiently.

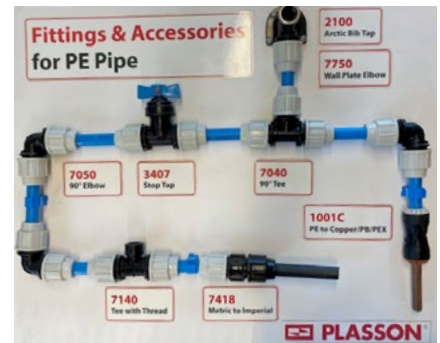
Rouden Pipetek is a one-stop facility for civil engineering, building and construction companies, whilst also supplying, sports ground contractors, utility and telecommunications contractors. We are also proud to supply specialist water feature and building services companies, as well as agricultural contractors.

Our product range includes, but is certainly not limited to the following;

Foul Water Drainage Systems (plastic & clay), Surface Water Drainage Systems, Twinwall Service Ducting, Street light and Traffic Signal Ducting, Land Drainage Pipework and Geothermal Heating Systems.

We also offer a Specialist Fabrication service, Barrier Pipe Systems, Sewage Treatment Plants, and Manhole Covers and Frames. Other lines include Linear Channel Drainage Systems, Grass Reinforcement, Geotextile Membranes, Attenuation Crates and PVCu and ABS Chemical Pipework Systems. For a comprehensive list of our products and further information, simply visit our Products page.

mail@rouden.co.uk
www.rouden.co.uk



ROUDEN PIPETEK

The largest independent pipework supplier in the south of England



Rouden Pipetek is a one-stop facility for civil engineering, building and construction companies, additionally supplying to sports ground contractors, utility and telecommunications contractors. We also supply to specialist water feature and building services companies, as well as agricultural contractors.

For a comprehensive list of our products and further information, simply visit our website.



Petersfield

New Barn,
Ham Barn Business Park
Farnham Road, Petersfield,
Hampshire GU33 6LG
01730 777 350

Pease Pottage

The Orchard, Brighton
Road, Pease Pottage,
Crawley, West Sussex,
RH11 9AB
01403 275 276

Maidstone

Detling Aerodrome Ind. Estate
Detling, Maidstone,
Kent ME14 3HU
01795 843 866

RM-2 RAINMAKER

INTERNET BASED 2 WIRE DECODER SYSTEM
IRRIGATION CONTROLLER



Market Sectors

- Agriculture Irrigation
- Landscape Watering
- Golf Irrigation

Benefits

- Can retrofit to legacy Tonick Decoders.
- Remote Control using PC, Smartphones and Tablets over GPRS, 4G, WiFi.
- No app needed, any browser. Web pages in the controller.
- 127 to 508 decoder stations.
- TW/NG-1 decoders programmed and tested using a free App (tamper protected)
- Can sense correct water flow in a valve without needing a flow meter.
- Low cost sensor decoders

Overview

The RM-2 Rainmaker irrigation controller provides a solution for medium to large scale irrigation applications. Providing remote connectivity, the RM-2 is versatile, and is very competitively priced, with many extra features the 'well-known names' do not have. (some patented)

The RM-2 comes with both an Ethernet and an integrated 4G modem providing remote access via a smart phone, tablet, PC or centralised monitoring system. The unit is configured using its own web interface, enabling the user to setup watering stations and program times.

RM-2 RAINMAKER

INTERNET BASED 2 WIRE DECODER SYSTEM IRRIGATION CONTROLLER

Features

- Retrofit to legacy Tonick TW/2W decoders
- Many extra features with next generation TW/NG decoders
 - Decoders programmed and tested using a free NFC app on an Android phone (tamper protection)
 - Valve can be tested using the App
 - Confirmation of water flow through the valve
 - Geo location and installation notes held in the decoder, retrieved by RM-2
- Low cost Flow, Pressure and Moisture Monitoring

Web Page Configuration

The RM-2 has an integrated web server allowing users to operate and configure the RM-2 using a standard web browser. This means it does not need to rely on a 3rd party server, App or proprietary network software.

The web interface will display historic alarms and the current the status of each watering station. The web interface allows the user to test individual or groups of stations by using the manual override feature.



Tonick Decoders

- Next Generation TW/NG-1 family.
- TW/2W Legacy decoders With 1, 2, 3 and 4 outputs.
- Wide variety of TW/NG sensor decoders.
- 5-year warranty, including lightning damage.

Communication Interfaces

- Ethernet, 4G & GPRS, Wifi.

Protocols Supported

- Modbus TCP & RTU, DNP 3.0, Open VPN, SMS.



TWL-Irrigation & Underhill
Wilsonwells Croft
Crimond
Fraserburgh
Aberdeenshire AB43 8YH

01346 531193
sales@twl-irrigation.com
www.twl-irrigation.com

AFT Trenchers

We are a UK manufacturer that designs and builds robust and easy-to-use sports turf drainage trenchers.

Our machines are used by major golf courses, sports facilities and landscape contractors all over the world. They contributed to the maintaining of outstanding sporting venues including the football World Cup, the Olympics, and the Commonwealth Games.

Our trenchers have been known to last 40+ years. We often have clients joking about the fact we shouldn't make them so long-lasting. They are also easy to use: we deliver the machine, show you how it works, and you'll be an expert in no time. Our trenchers come as an attachment for compact tractors (30+ HP); they are perfect for DIY drainage works.

AFT 45 - "Affordable & convenient compact trencher for primary drainage"

The AFT45 is a versatile drainage trencher that can be supplied with a digging chain or a slitting wheel and can be fitted with a conveyor system.



AFT Dual Use Hopper - "The perfect backfilling accessory"

The Hopper can be fitted with a choice of gravel chutes and a sand placement unit with compaction rollers. Very practical to backfill narrow trenches.



AFT Sandbender - "Cost-effective & less intrusive for secondary drainage"

The Sandbender can put in a well consolidated sand slit for secondary drainage quickly and efficiently without any disruption to the use of the playing surface. The lightest of tractors can drive around with a fully loaded Sandbender if equipped with retractable support wheels.



Contact us at 01787 311 811 or info@trenchers.co.uk. Visit www.trenchers.co.uk to access the complete range of AFT Trenchers.

AFT is pleased to be present at GroundsFest, stand 54.

 A large promotional image featuring two red compact tractors with yellow AFT trenchers. One tractor is pulling a grey trailer full of soil. The AFT logo is in the top left corner. The text "AFT TRENCHERS LTD" is below the logo.

Compact Trenchers For DIY Drainage

Stand 54 at GroundsFest 2024

www.trenchers.co.uk | info@trenchers.co.uk | 01787 311 811

Effective water solutions
for all landscapes

FASTER EASIER INTUITIVE CONTROL



The Lynx Central Control System. Intuitive, faster and easier irrigation control.

A faster, easier way for greenkeepers to act on their course management decisions. The smart Toro Lynx control system software gives you intuitive control over what happens on your course by making all essential irrigation data available in one place. Switch to Lynx and instantly get more from your irrigation.



40 YEARS OF WORKING TOGETHER

reesink-hydrosapes.co.uk

Terrain Aeration scores with Hallam Grange

Hallam Grange Bowling Club has its roots in a tennis and sports club dating back a hundred years. Located to the west of the vibrant city of Sheffield, today's club draws enthusiasts of all ages and levels with first-class facilities and until recently the bowling green was no exception. Well maintained and meticulously taken care of by a small number of members and led by volunteer green keeper, Martin Westley, the green had begun to suffer after last winter and the exceptionally wet build-up into spring. It was known the green was originally constructed on an area used for spoils from house building many years ago and the only drainage was in the gutters around the edge.

"Usually, we have a smooth, even, and top-quality surface," says Martin, "but last winter was so very wet and we started to get pooling across the green. We have done regular vertidrainage down to about twelve inches, but each time there's heavy rain we have standing water. We were certain the combination of the original foundation of the green and sixty plus years of play had led to compaction at depth and lack of drainage."

Martin did some research to see what was available to solve the problem. He came across Terrain Aeration and spoke to other clubs whose greens

The Terrain Aeration Terralift system works on the principle of a probe drilling down to a metre depth and releasing compressed air at a maximum of 20Bar (280psi).



had been treated as long as fifteen years ago and were still draining freely.

The Terrain Aeration Terralift system works on the principle of a probe drilling down to a metre depth and releasing compressed air at a maximum of 20Bar (280psi). This fractures and fissures the soil to allow drainage. On the tail end of the blast, dried, milled seaweed is injected. Over time, the seaweed expands and contracts in the soil, similar to 'breathing' underground, to help keep the fractures open. The probe is removed, and the process repeated using two-metre centre

spacings on a staggered grid pattern. This grid ensures that each probe shot links with the previous ones. Terrain Aeration says the long-term solution leaves little surface disruption and allows immediate play after treatment. That was certainly the case for Hallam Grange. Martin says, "Terrain Aeration arrived at ten in the morning and worked through to about three in the afternoon, and you couldn't really tell where they had been. We played a league match at six-thirty the same day."

Terrain Aeration
www.terrainaeration.co.uk
 01449 673783

THE BEFORE AND AFTER OF ONE METRE DEEP AERATION

**COMPACTION AND WATERLOGGING STOP PLAY.
DOWNTIME COSTS MONEY.**



Terrain Aeration's long-term treatment reaches one metre deep where compressed air blasts the compaction.

The soil is opened up for good drainage and a healthy sward with minimum disruption.

We have been successfully deep aerating sports turf, bowling greens, golf courses, parks, racecourses, trees and gardens for over thirty years.

See us at work:

www.terrainaeration.co.uk

Call us for a quotation 01449 673 783



INFINICUT® mowers enter Home Park two by two

A recent upgrade to the mower fleet at Plymouth Argyle Football Club has seen the delivery of two INFINICUT® 34" FX cylinders and two SM34 rotary mowers to the club's stadium pitch at Home Park. Together with outstanding quality of cut and first-class presentation, Head Groundsman Chris Ralph also cites the improvements in consistency achieved with their mowing operations thanks to the industry-leading INFINIApp™.

The investment has been on the cards for the last 18 months, which gave Chris and his team of five ample time to compare and contrast the options available. "We'd been using two INFINICUT® fixed head cylinders and were always happy with those - they're reliable and comfortable to use, with minimal noise and vibrations. We found nothing that could better those" he explains. "On the rotary front, we demonstrated various models and were impressed with the performance and finish of the SM34's, the ease of height adjustment compared to competitor machines and the side placement of the grass bucket which means it's not hitting your legs all the time!"

With the decision made, the fleet was delivered by Andy White and Paul Curgenvin of Shinnars Bridge Garden Machinery and INFINICUT's Mark Clifford-Kennedy in February 2024. "Andy, Paul and Mark left no stone unturned when they dropped the machines off. They went through every detail of the machines, guided us through



"The whole team have been really impressed, with not just the INFINICUT® machines themselves but the support and service we've had from Shinnars Bridge along the way.

set-up and demonstrated the full functionality of the INFINIApp™." Chris continues, "The Bluetooth control is a great feature. We can quickly and easily set reel speed, clip rates and more, and share settings between machines to give us greater consistency than we've ever achieved before."

In addition to the cylinder and rotary mowers, the club also purchased a pair of ThatchMaster™ cassettes from the TMSsystem™. "I've been looking at these for a while! Our ProPitch reports were

identifying an increase in thatch levels over the last 12 months and our only way of trying to combat that previously was with a tractor and rake. We equipped our 34" machines with the ThatchMaster™ cassettes for a first pass in mid-March and the results were outstanding! We each removed three or four boxes of unwanted organic matter, and the pitch looked healthier immediately."

"The whole team have been really impressed, with not just the INFINICUT® machines themselves but the support and service we've had from Shinnars Bridge along the way. We're now well placed to further drive up the standards of our stadium pitch, along with our neighbouring first-team training surfaces too."

www.infinicut.com

GKB fleet tackles multi-use maintenance at Leigh Sports Village

With up to eight different teams sharing the facilities at Leigh Sports Village, it's no surprise that Head Groundsman Keith Porter and his team are kept busy when it comes to the maintenance of such a high-wear site! Thankfully they've got the assistance of a fleet of equipment from GKB Machines, which keep both the natural and artificial surfaces looking and playing at their best.

Keith and his team of six are currently looking after the stadium pitch, three grass training pitches, two full size artificial surfaces and the three football cages that make up Leigh Sports Village - home of Manchester United Women and used by U21's, U18's and development squads along with Leigh Leopards of the Rugby Super League. "Maintenance windows are tight" Keith emphasises "so when we're looking at purchasing machinery, we want robust and reliable solutions that will get the job done how we need it to, and when we need it to."

"The first GKB machine we bought was the Combiseeder which we'd had on demonstration alongside a couple of other dimple seeders. Straight off the bat we liked the build quality, and the fact that we could adjust the pressure with water tanks on the front and back to suit the stadium pitch construction as well as the outer pitches."

Shortly after, a GKB Renovator and Aerator were added to the fleet, for decompaction of the synthetic surfaces. "These two pitches are

always in demand and the high wear results in issues with compaction of the rubber infill. During the summer we normally conduct three passes with the Renovator loosening up the infill of the upper profile, with compaction deeper down tackled with year-round passes with the Aerator." Keith adds, "The surfaces undergo regular testing by the RIB which look at the various elements to do with player safety and surface quality and thanks to these GKB machines, we pass every time."

The most recent addition is a V-Strong, a scarifier fitted with GKB's unique CombiRotor and heavy-duty steel blades to effectively control weeds and organic matter. He explains, "Because of demand, we have to alternate and/or stagger full

renovations so, when we can't renovate, we can now intensively scarify as we've done this year on two of our pitches. This is an unbelievable piece of kit! We removed an incredible amount of material from one of our rugby surfaces and also ran it through our SIS goal mouths. It cleaned these up a treat."

Together with reliability and overall performance, Keith commends the back up support from GKB's Tom Shinkins. "Tom's responsiveness is second-to-none, whether that's sourcing us a machine at short notice or answering any questions we may have. The back-up is brilliant."

For more information visit:
www.gkbmachines.com





Global sports pitches leader announces Saudi Arabia ambitions

The team behind the World Record-breaking Kingdom Arena pitch, SIS Pitches, has shared its ambitious long-term plans to expand into Saudi Arabia and the Middle East.

SIS Pitches, which produces premium hybrid, synthetic and natural pitches for an array of sports, including football, rugby, golf, tennis and cricket, made its first foray in the Middle East in 2011 in Dubai UAE.

Recognising a growing appetite for high-level professional sports, and the growing need for cutting edge surfaces, the sports surface specialist established a Saudi Arabia office in July last year. Within weeks, they undertook

one of the world's most ambitious sporting infrastructure projects to complete the Kingdom Arena - the world's first fully indoor hybrid pitch, famously built in just 21 days - in partnership with Sela.

So far, SIS Pitches has invested more than 1.3M SAR (\$370,000) into the region - with Saudi Arabia now firmly established as a country key to the business's long-term plans.

The company has opened three maintenance depots across the country in Tabuk, Jeddah and Riyadh, all designed to cater to local professional teams, including Neom FC, Al Ahli-FC and Al-Hilal FC. Those will also enable SIS Pitches to undertake major maintenance and pitch care

projects in the Kingdom, which have previously included the Italian and Spanish Super Cups at King Fahd Stadium and Al-Awwal Park.

Additionally, two new turf farms have opened in Saudi Arabia and Turkey, joining the already established UAE site, to grow high-resilience turf, guaranteeing efficient costs and turf health to support major projects in the region. This includes high-level pitches and surfaces for a range of sports - from rugby and football to equestrian sports and cricket - as well as commercial landscaping.

The current team, which is 40 people strong, is also expected to grow to 60 people in the next year.

David Ball, Managing Director at SIS Middle East, said: “Over the past five years, Saudi Arabia has clearly established itself as a key destination for some of the world’s biggest athletes. People’s love of sports here is apparent, and there’s been a real appetite for the high-standard facilities to rival those of major European teams.

“The opening of our Saudi Arabia office last year reflects our commitment to establish ourselves in the region, bringing our experience working with some of the most recognisable names in sports to the Kingdom’s professional teams and supporting them as they step onto the international stage. Being local

also means we can offer a speedy, domestic solution throughout a full season of sport.

“This is a pivotal moment for sports in the region,” David added. “We’re looking forward to helping the Kingdom make history.”

SISGrass, which offers hybrid playing surfaces using a small percentage of polymer fibre stitched into a natural grass pitch, is part of the SIS Group, a fully international business with offices around the world, including UK, Ireland, Netherlands, Turkey and the Middle East. The product forms part of SIS’s wider portfolio of sports surface solutions, which includes the artificial variant

“

Over the past five years, Saudi Arabia has clearly established itself as a key destination for some of the world’s biggest athletes.

SISGrass Synthetic, made with a choice of monofilament or fibrillated yarns - or a mixture of the two - plus thatch support yarn and surfaces developed specifically for athletics tracks.

For more information on SISGrass Synthetic, visit: www.sispitches.com/services/synthetic-turf-manufacturing



Kubota tractors prove to be the workhorses for Warwick Castle

A trio of Kubota tractors have proven themselves to be capable workhorses for the entire facilities operation at Warwick Castle. With 64 acres of vast and varied historical landscape to maintain, Grounds and Gardens Manager Tony Cameron explains how - alongside some more obscure uses - the L2622, L4240 and B2261 are responsible for towing the mowers that cut 95% of the turfed areas, with the assistance of their F3890 out-front mower also from Kubota!

Built by William the Conqueror

during 1068, Warwick Castle has played a crucial role in shaping British history. More than 950-years on, the ancient walls surround an array of lawns and gardens, a 'Horrible Histories' maze and a glamping site not to mention a new 60-bed hotel and grounds, opening in July 2024, and providing the platform for year-round events. With so much to maintain, the key for Grounds and Gardens Manager Tony when it comes to machinery, is reliability which he says he's enjoyed with the Kubota fleet he's built up over his 12-year tenure.

"We've had other tractors and ride-on mowers in the past which always seemed to have one problem or another. Together with having all-important kit out of action, we also found frustrating delays in getting these issues fixed" Tony says. "The first Kubota we purchased was the L4240 six or seven years ago which, to date, remains faithful and versatile - it's basically bulletproof. Whether we're towing implements or trailers, this is our go-to for a range of maintenance tasks around the site."





Since then, Tony has purchased the larger 62hp L2622 equipped with forks, and the smaller B2261 compact tractor from Richard Lucas at Hunts Engineering - the latter delivered in August 2023. "The L2622 is big and powerful, making light work of towing our large-area mower to cut big spaces quickly. Any deliveries we get, the L2622 is there to unload and move materials around the site. It get's a lot of use... even coming in to lift the trebuchet recently when the winch failed!"

"The B2261 is another great bit of kit that can get to all the areas the larger tractors can't, towing smaller mowers and will be loaned to the jousting team to operate the grading equipment used to level the arena."

“
With Kubota we know we're going to get user-friendly and well-built bits of equipment, powered by good engines and that ultimately do a good job.”

Complementing the fleet of tractors and providing the solution for embankment mowing and cutting in wet conditions, is an F3890 from Kubota's F-Series. With a 60" rotary deck, rear discharge and auto-assist 4wd as standard, it brings Kubota finesse and reliability to even the most demanding of mowing operations. "This is used on all the formal

areas where it's more challenging to manoeuvre a tractor, as well as around the many obstacles within the glamping site. We use this wherever we can, our moat ditch and the riverbank are another couple of examples, and it leaves a fantastic finish whether it's wet or dry."

Tony concludes, "With Kubota we know we're going to get user-friendly and well-built bits of equipment, powered by good engines and that ultimately do a good job. The support we've received from Hunts Engineering has also been first-class, with outstanding responsiveness from Richard and the team whenever we've had a question or query. It ticks every box for us."

www.kubota-eu.com

Fertilisers are on a journey towards sustainability

Fertilisers are not known for being good for the environment. Where they are not mined with heavy machinery, they are produced in large energy-intensive factories. It doesn't stop there, the way that fertilisers are used has big impacts on emissions and sensitive wildlife areas. Sports turf represents a small dot on the large landscape of fertiliser use, but as many of our turf areas and practices are publicly visible, we must lead by example and join the journey towards sustainability.

Source and use nitrogen fertilisers with care

Nitrogen is a favourite of grass. It makes it grow fast, and green. Historically we used high-nitrogen fertilisers without a thought to how much of that nitrogen ends up inside the grass. Nitrogen leaches from soil quickly and impacts the biodiversity of local waterways and ponds. So, we have made use of technology to reduce that loss where possible.

Most recently, polymer-coated ureas (PCUs), such as Nutrilong, have proved extremely efficient and timesaving. These are changing slightly as new microplastics legislation comes into effect but are still the only reliable controlled-release option available.

Inhibited ureas, such as Velvit NMAXX, are a great option for short-term nitrogen requirements. Enzyme inhibitors slow down the transformation of urea by soil bacteria. This gives the plants more

Plant-based materials that are produced as byproducts from other industries will be key contributors to the future of fertilisers.



time to use the nitrogen, reduces nitrogen leached from the soil, and reduces nitrogen being released into the atmosphere in the form of the greenhouse gas, ammonia.

The future of fertilisers is in recycled nutrients

Some manufacturers, such as GreenBest, are investigating alternative sources of plant nutrients. Key grass nutrients, phosphorus and potassium, are usually mined out of the ground. Shockingly, it is estimated that mines will start to run out of good-quality phosphorus in as little as 50 years.

Plant-based materials that are produced as byproducts from other industries will be key contributors to the future of fertilisers. Velvit Shea Fertilisers, for example, contains shea shells from cosmetics and food manufacturing. Here at GreenBest, the innovation centre team are exploring



other suitable materials that could provide a source of organic nutrients to turfgrass.

Education and information are the key

GreenBest is committed to providing educational material to those that sell or use their products. Sign up to our mailing list for product updates and to hear about our live webinars; BASIS CPD points are available. You can also visit our website (www.greenbest.co.uk) to read our blog posts or find out more about our products. We also welcome you to sign up to the GreenBest Academy (www.greenbestacademy.co.uk) to watch one of our pre-recorded webinars and access our premium online courses.

sales@greenbest.co.uk
www.greenbest.co.uk
 +44(0)1963 364788








Velvit
Fertiliser



Premium turf fertilisers for sports turf professionals

Join our mailing list for:

-  Earn BASIS CPD points*
-  Product news and information
-  Educational webinars
-  Promotional offers



Find us at:

GROUNDS
Fest Stand 28

SALTEX Stand C100

Visit our stand to receive a **FREE** GreenBest branded hat*

*Ts & Cs apply. Visit greenbest.co.uk for more information.

Grow Pitch-Perfect Turf with a Tonivit & Double Edge Combo

If you want top turf this year, a combined programme of TONIVIT and DOUBLE EDGE will give you both the establishment and the recovery you need for resilient grass throughout the season.

Kickstarting growth with TONIVIT

TONIVIT is a great activator of root growth and root activity. It speeds up establishment of grass and boosts tillering by activating the plant's nutritional pathway to increase nutrient uptake from the soil.

A natural biostimulant, TONIVIT contains the active ingredient GoActiv, extracted from the seaweed *Ascophyllum nodosum*, along with added phosphorus (P 5.7%) and potassium (K 4.2%) further support root development. It's also OF&G Organic Certified.

How to use

Apply as little as 1 L/ha from emergence, every 10-14 days.

Boost your recovery with DOUBLE EDGE

DOUBLE EDGE is another natural growth stimulant, and like TONIVIT, it contains the active ingredient GoActiv, with added P (0.8%) and K (1%) but also combines that with nitrogen (2%) and a complex of 18 vegetable amino acids.

This unique formula boosts protein synthesis and aids in stress recovery. By giving your turf access to ready-built



amino acids, your grass can build protein and recover quickly.

By improving nutrient and water uptake from the soil, and encouraging both protein production and photosynthesis, Double Edge helps your turf overcome the stress of the season, toughening up and ensuring it looks its best.

How to use

Apply 1L/ha from the start of spring and then every 10-14 days.

The perfect combination

Both TONIVIT and DOUBLE EDGE are tank mixable with a wide range of fungicides, insecticides, plant growth regulators, and fertilisers. Tank mixing with herbicides is not recommended."

www.upl-ltd.com/uk

DOUBLE EDGE® & TONIVIT®

POWERED BY GOACTIV TECHNOLOGY AND AMINO ACIDS TO BOOST PLANT HEALTH



www.upl-ltd.com/uk

UPL Europe Ltd, Engine Rooms, 1st Floor, Birchwood Park, Warrington, Cheshire WA3 6YN
T: +44 (0) 1925 819999 E: info.uk@upl-ltd.com

Use plant protection products safely. Always read the label and product information before use. Pay attention to risk indications and follow the safety precautions on the label.
DOUBLE EDGE and TONIVIT are registered trademarks of UPL. © UPL Europe Ltd 2024.



SCAG / STM introduce the Jackal

Welcome to the SCAG Jackal: a Stand-On Mini Skid-Steer. This is a new addition to the SCAG range - extending the capability of SCAG products for professional grounds maintenance. The Stand-On format draws on the technology of the highly successful "V-Ride" stand-on mower range. In addition to the lean-on cushion there are side cushions to protect the operator on the sort of terrain these machines will be working on. The control panel is also typical SCAG with clear information, all within easy reach, plus there is joystick control for drive and bucket. The unit is designed to be of use with a wide range of forestry and clearance attachments.



The machines are available through the STM dealership network. To find your nearest dealer ring 01789 488450, email info@st-mach.com or look at our website www.st-mach.com



Debris Clearance Equipment



APF 2024
GROUNDS
Fest

Pedestrian and Stand-on mowers



01789 488450
info@st-mach.com
www.st-mach.com

Electric and Petrol ride-on plus Remote Control mowers



www.st-mach.com

Specialist Grounds Maintenance Vehicles by AKFS

TORO-inspired Load & Go® Grounds Maintenance Vehicle

Specialising in lightweight yet durable engineering, AKFS's Load & Go® Grounds Maintenance vehicle conversion stands out with a total conversion weight of just 320kg, including an assisted tailgate. This ensures businesses benefit from optimal payload options. Our commitment to tailor-made solutions is evident in our bespoke conversions, designed to meet the specific needs of each customer, backed by extensive experience and advisory on design modifications.

The Load & Go® Grounds Maintenance model emphasises operator safety with its low working height and efficient tailgate, facilitating smooth transitions for large mowers and equipment. It easily accommodates most large ride-on mowers and offers additional storage for tools and associated equipment. Customisation options, including towbars, winches, lighting, and more, ensure it meets both personal preferences and regulatory requirements.

The Load & Go® Grounds Maintenance vehicle conversion's compatibility with a wide range of base vehicle cab options makes for unparalleled flexibility, allowing clients to select a model that best fits their preferences.

Signature Series Plant & Go® Landscaper Vehicle

Utilising the Fiat Ducato and Peugeot Boxer Back-to-Back cabs, along with the low-floor chassis conversion by our partner Al-Ko Vehicle Technology Group, the



Above, TORO-inspired Load & Go® Grounds Maintenance Vehicle.
Below, Signature Series Plant & Go® Landscaper Vehicle



Plant & Go® Landscaper vehicle sets a benchmark for reliability and performance. It boasts a unique low-floor design and generous payload capacities for both the 3500kg GVW vehicle and the 4500kg GVW option.

Designed for maximum convenience, the Plant & Go® Landscaper features a width of 1810mm between the rear wheel arches, accommodating most large ride-on mowers, including the cutting deck, with ample storage for tools. Our low-floor design facilitates easy loading and unloading, transforming how grounds maintenance tasks are executed. Operator safety is our top concern.

The Plant & Go® Landscaper vehicle features a low working height of just 530mm and includes an assisted tailgate as standard, ensuring easy and safe access.

Fully customisable, the Plant & Go® Landscaper vehicle can be tailored to meet specific user requirements. Optional extras include winch systems, tool storage lockers, LED work lights, and 360-degree amber strobes for complete street-level visibility.

For more information, contact our Grounds Maintenance Product Specialists on 01246 250022 today.



TORO-inspired Load & Go®
Grounds Maintenance Vehicle

Designed and built
in partnership with



Get in touch with us today!



Signature Series Plant & Go®
Landscaper Vehicle



Find out more

01246 250222
www.advanced-kfs.co.uk



Eco Clipper FM343: The Future of Efficient Lawn Maintenance

Eco Clipper is recognized for its efficient, quiet, and high-performing electric mowing systems for large lawns. Our technology ensures excellent results, even in challenging conditions such as wet grass and weeds.



To meet the demand for lightweight mowers compatible with most park tractors of 40 hp and above, we introduced the Eco Clipper FM343 in 2024. This three-part front mower has a cutting width of 343 cm and can be folded to a transport width of 170 cm. Like its larger counterpart, the 411 cm wide EC-FM4, it is powered by a PTO-driven generator mounted behind the tractor.

The Eco Clipper FM343 is designed to be a versatile solution for maintaining large lawns, sports fields, and rough terrain. It sets a new standard in lawn care, ensuring that grounds are maintained efficiently and effectively. Discover the capabilities of the Eco Clipper FM343 and improve your lawn care.

www.ecoclipper.com

ECO CLIPPER®

Efficient electric mowing
systems for maintaining
large area turfgrass



Eco Clipper FM4 Sport, 411 cm mowing width



NEW!

Eco Clipper FM343
343 cm mowing width

www.ecoclipper.com



Chelwood Tool Co. Ltd

We offer a large range of rakes for all reasons, in sizes ranging from 35cm to 100cm wide, with a variety of tooth gaps.

CHELWOOD®
RAKES Rakes of excellence since 1970

For a wider range of specialist tools visit
www.chelwoodrakes.com

We also offer a heavy duty aluminium snow type multi-purpose shovel, Animal bedding forks and our new Chelute®.

T: 01409 220230 • E: sales@chelwoodrakes.com

Chelwood – for the finest range of rakes on earth!

DESIGN : CONSTRUCTION : RENOVATION



**duncan
ROSS LTD**
Sportsturf | Land Drainage | Greenspace

GPS Guided Piped Drainage Systems : Pitch Construction
Bulk Earthworks : Mara 5mtr GPS Grader/Leveler
Sand Slitting: GKB Top-Drain : Koro Surfacing
Vertidrainning Topdressing : Overseeding : Koro Scarify
Fertilising : Weed Control : Landscaping



📞 01257 255321

✉ office@duncanrossltd.co.uk

www.duncanrossltd.co.uk

SPECIALIST SPORTSTURF CONTRACTOR

GROUNDSKEEPING

JOURNAL



The UK's latest bi-monthly publication providing latest product innovations, industry news and opinions from key professionals within the industry.

With focuses on Aeration, Irrigation & Drainage; Greenskeeping; Latest News; Machinery; Pitch & Line Marking; Specialist Mowers; Sports Ground Equipment; Sports Pitches; Top Dressing; Sprayers & Spraying and Turf Management.

FREE DIGITAL MAGAZINE SUBSCRIPTION

Subscription enquiries:
Call 01304 806039
Email: info@mhmagazine.co.uk

Advertising enquiries:
Lee Martin – 01227 936974
Email: lee@groundskeepingjournal.co.uk

Editorial submissions or enquiries:
Antony Holter – 01304 806039
Email: antony@mhmagazine.co.uk



SUBSCRIBE TODAY!

**DO YOU KNOW
WHERE YOUR
OPERATIVES
ARE TODAY?**



RE-FLOW DOES

Re-flow[®]
Field Management

Intuitive, flexible, powerful –
the only field operations software
you will ever need.

Call [01392 574002](tel:01392574002)
Visit www.re-flow.co.uk



LEARN MORE

GROUNDS
Fest

Visit us at Hall 1, Stand 31